

Data Path : Z:\VOASRV\HPCHEM1\MSVOA N\DATA\VN122418\  
 Data File : VN053180.D  
 Acq On : 24 Dec 2018 13:00  
 Operator : MD\SY  
 Sample : J6528-01 10X  
 Misc : 5.00mL/MSVOA N/WATER  
 ALS Vial : 10 Sample Multiplier: 28

Instrument :  
 MSVOA\_N  
 ClientSampleId :  
 23738

Quant Time: Dec 26 11:29:21 2018  
 Quant Method : Z:\VOASRV\HPCHEM1\MSVOA\_N\METHODS\82N121818W.M  
 Quant Title : SW846 8260  
 QLast Update : Tue Dec 18 13:03:37 2018  
 Response via : Initial Calibration

Internal Standards	R.T.	QIon	Response	Conc	Units	Dev(Min)
1) Pentafluorobenzene	7.67	168	1173050	50.00	ug/l	0.00
34) 1,4-Difluorobenzene	8.59	114	1789159	50.00	ug/l	0.00
63) Chlorobenzene-d5	11.41	117	1618923	50.00	ug/l	0.00
72) 1,4-Dichlorobenzene-d4	13.34	152	696356	50.00	ug/l	0.00

## System Monitoring Compounds

33) 1,2-Dichloroethane-d4	8.03	65	564722	47.44	ug/l	0.00
Spiked Amount	50.000		Recovery	=	94.88%	
35) Dibromofluoromethane	7.59	113	497752	60.90	ug/l	0.00
Spiked Amount	50.000		Recovery	=	121.80%	
50) Toluene-d8	10.09	98	2223944	50.69	ug/l	0.00
Spiked Amount	50.000		Recovery	=	101.38%	
62) 4-Bromofluorobenzene	12.40	95	758571	49.25	ug/l	0.00
Spiked Amount	50.000		Recovery	=	98.50%	

## Target Compounds

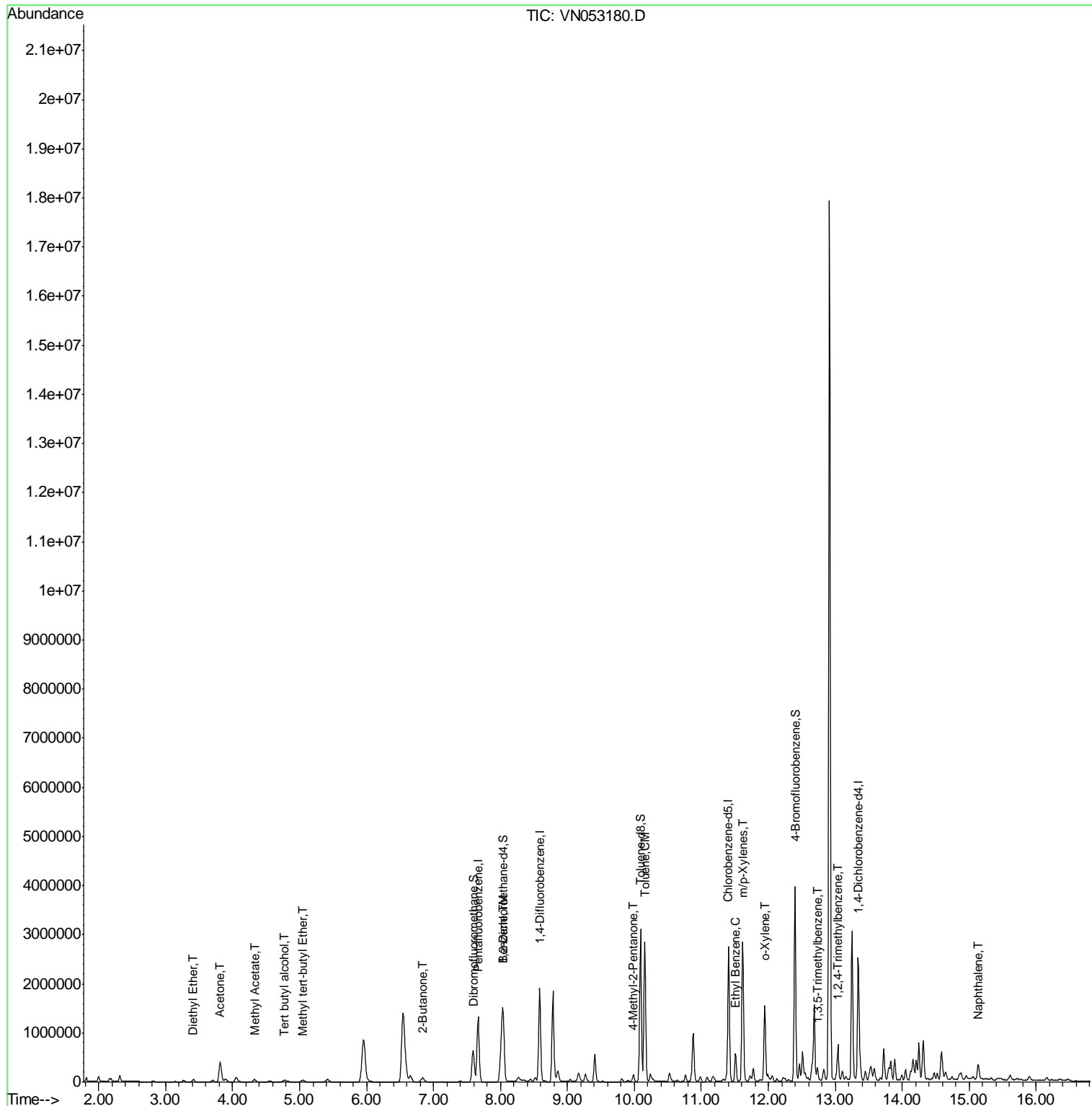
					Qvalue
8) Diethyl Ether	3.41	74	26639	3.890	ug/l 97
11) Tert butyl alcohol	4.78	59	68444	94.230	ug/l 100
16) Acetone	3.81	43	685080	293.516	ug/l 96
18) Methyl Acetate	4.33	43	92494	9.550	ug/l 100
19) Methyl tert-butyl Ether	5.05	73	55185	1.844	ug/l 98
25) 2-Butanone	6.84	43	151946	38.790	ug/l 99
40) Benzene	8.04	78	1027326	20.112	ug/l 99
51) 4-Methyl-2-Pentanone	9.99	43	103067	11.102	ug/l 99
52) Toluene	10.16	92	1280027	40.429	ug/l 99
67) Ethyl Benzene	11.51	91	428500	6.943	ug/l 100
68) m/p-Xylenes	11.62	106	920280	39.225	ug/l 100
69) o-Xylene	11.95	106	433193	19.241	ug/l 100
80) 1,3,5-Trimethylbenzene	12.73	105	127649	2.874	ug/l 99
84) 1,2,4-Trimethylbenzene	13.04	105	413059	9.252	ug/l 99
95) Naphthalene	15.13	128	258294	10.364	ug/l 99

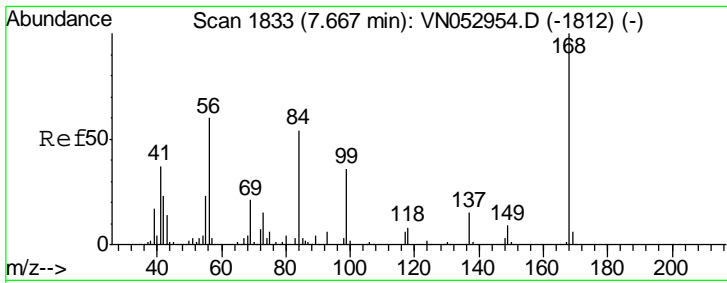
(#) = qualifier out of range (m) = manual integration (+) = signals summed

Data Path : Z:\VOASRV\HPCHEM1\MSVOA N\DATA\VN122418\  
 Data File : VN053180.D  
 Acq On : 24 Dec 2018 13:00  
 Operator : MD\SY  
 Sample : J6528-01 10X  
 Misc : 5.00mL/MSVOA N/WATER  
 ALS Vial : 10 Sample Multiplier: 28

Instrument :  
 MSVOA\_N  
 ClientSampled :  
 23738

Quant Time: Dec 26 11:29:21 2018  
 Quant Method : Z:\VOASRV\HPCHEM1\MSVOA\_N\METHODS\82N121818W.M  
 Quant Title : SW846 8260  
 QLast Update : Tue Dec 18 13:03:37 2018  
 Response via : Initial Calibration

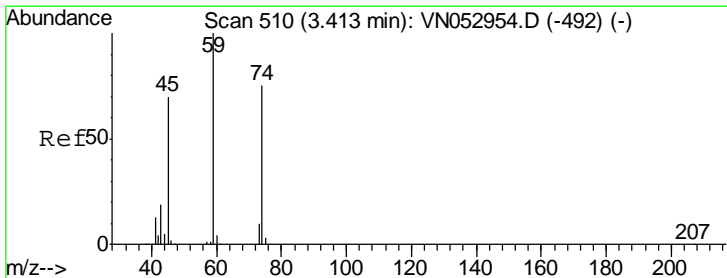
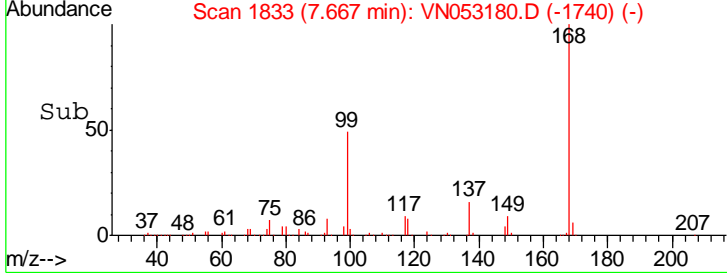
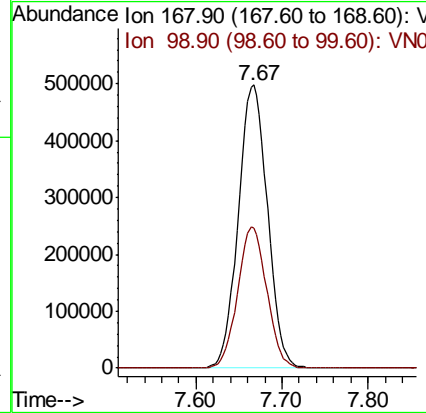
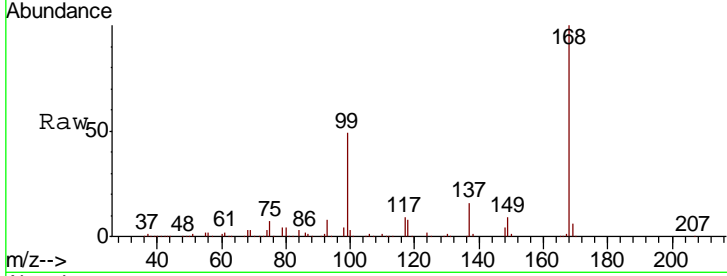




#1  
 Pentafluorobenzene  
 Concen: 50.000 ug/l  
 RT: 7.67 min Scan# 1833  
 Delta R.T. -0.00 min  
 Lab File: VN053180.D  
 Acq: 24 Dec 2018 13:00

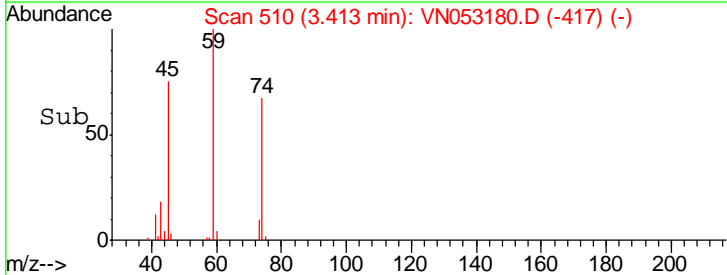
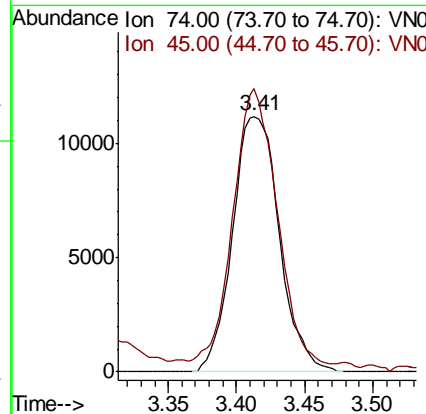
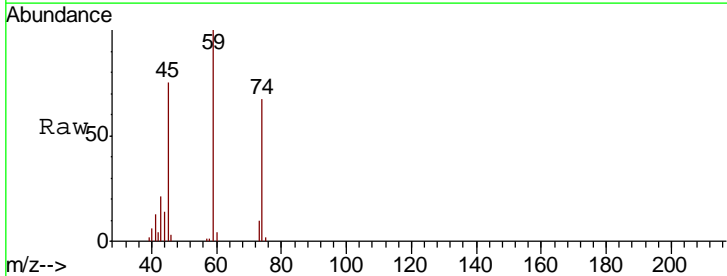
Instrument :  
 MSVOA\_N  
 ClientSampled :  
 23738

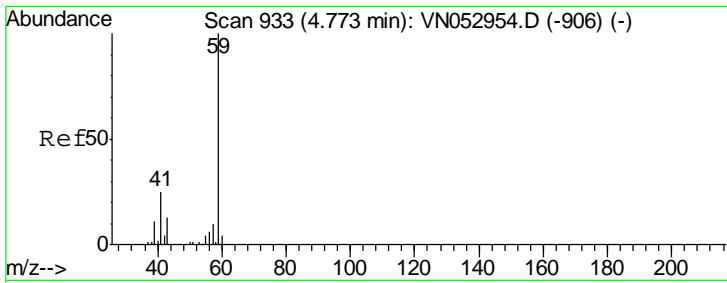
Tgt Ion: 168 Resp: 1173050  
 Ion Ratio Lower Upper  
 168 100  
 99 49.4 40.2 60.2



#8  
 Diethyl Ether  
 Concen: 3.890 ug/l  
 RT: 3.41 min Scan# 510  
 Delta R.T. -0.00 min  
 Lab File: VN053180.D  
 Acq: 24 Dec 2018 13:00

Tgt Ion: 74 Resp: 26639  
 Ion Ratio Lower Upper  
 74 100  
 45 102.0 49.4 148.0

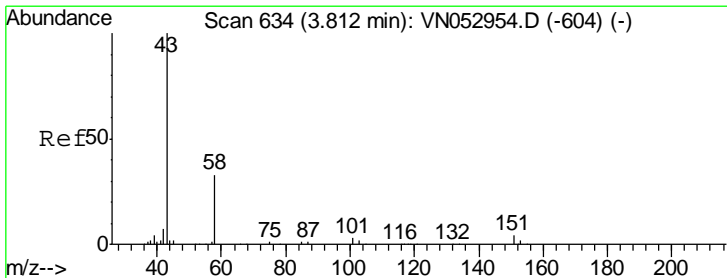
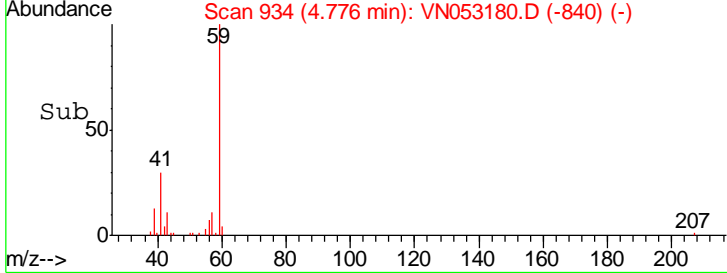
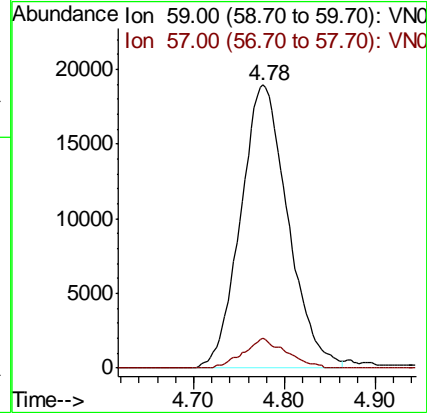
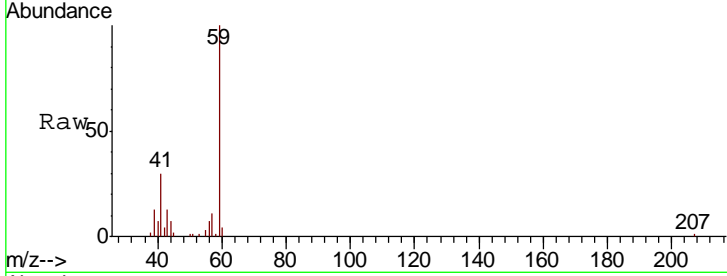




#11  
 Tert butyl alcohol  
 Concen: 94.230 ug/l  
 RT: 4.78 min Scan# 934  
 Delta R.T. 0.00 min  
 Lab File: VN053180.D  
 Acq: 24 Dec 2018 13:00

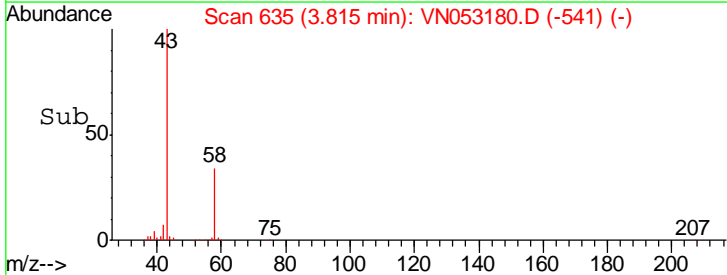
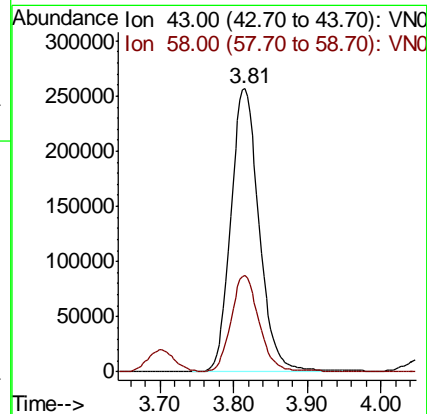
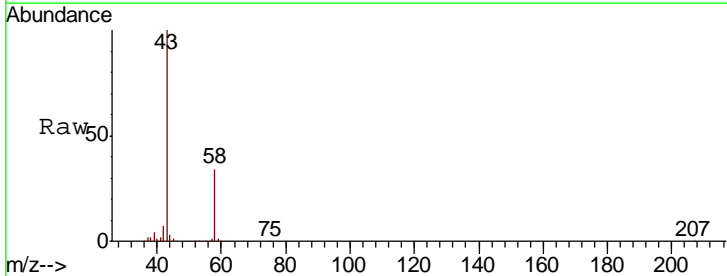
Instrument :  
 MSVOA\_N  
 ClientSampled :  
 23738

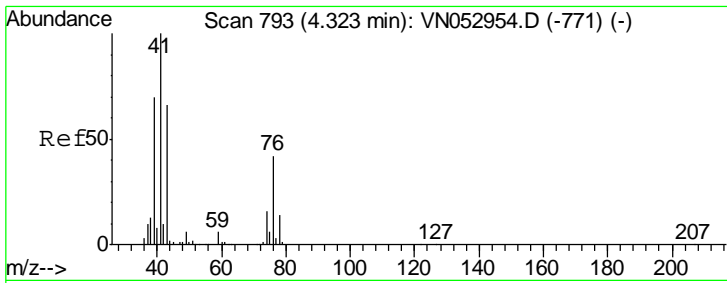
Tgt Ion	Resp	Lower	Upper
59	100		
57	9.5	7.7	11.5



#16  
 Acetone  
 Concen: 293.516 ug/l  
 RT: 3.81 min Scan# 635  
 Delta R.T. 0.00 min  
 Lab File: VN053180.D  
 Acq: 24 Dec 2018 13:00

Tgt Ion	Resp	Lower	Upper
43	100		
58	34.0	25.4	38.0

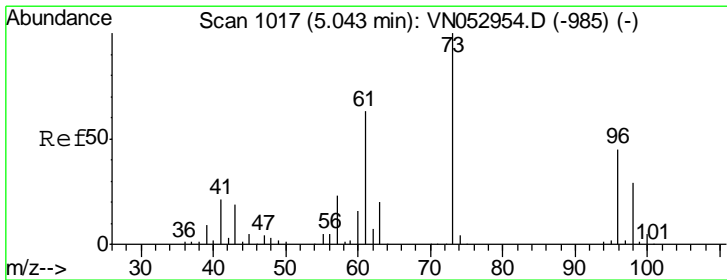
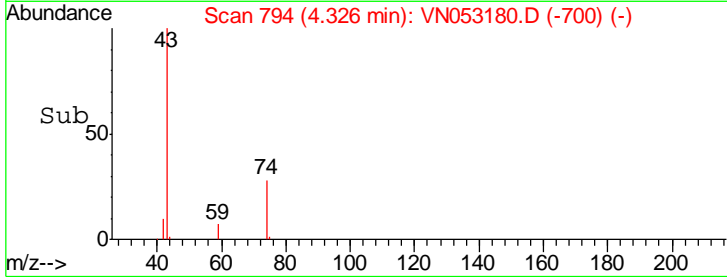
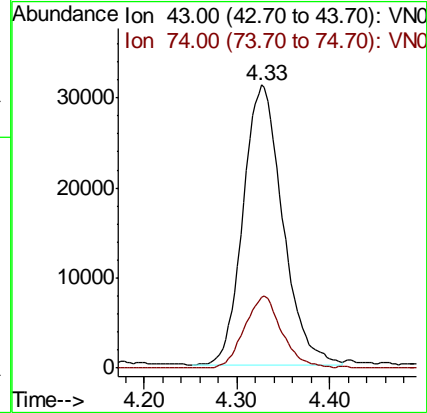
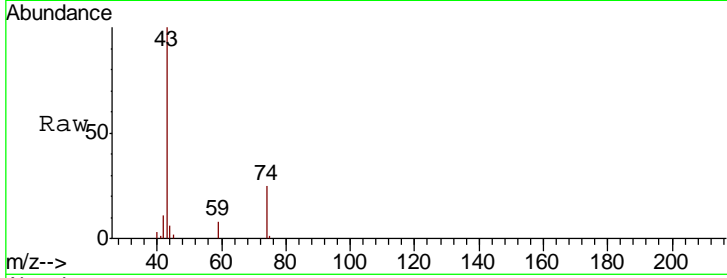




#18  
 Methyl Acetate  
 Concen: 9.550 ug/l  
 RT: 4.33 min Scan# 794  
 Delta R.T. 0.00 min  
 Lab File: VN053180.D  
 Acq: 24 Dec 2018 13:00

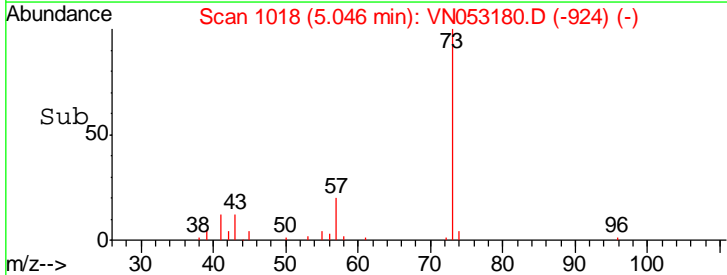
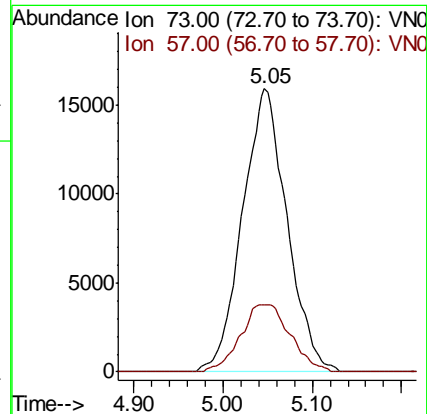
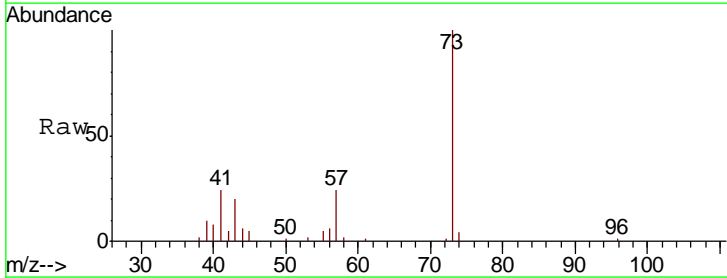
Instrument :  
 MSVOA\_N  
 ClientSampled :  
 23738

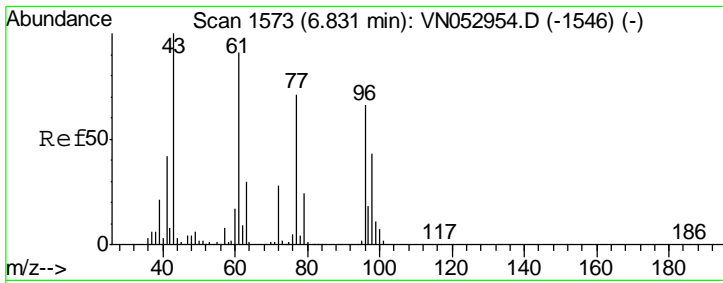
Tgt Ion: 43 Resp: 92494  
 Ion Ratio Lower Upper  
 43 100  
 74 24.2 19.2 28.8



#19  
 Methyl tert-butyl Ether  
 Concen: 1.844 ug/l  
 RT: 5.05 min Scan# 1018  
 Delta R.T. 0.00 min  
 Lab File: VN053180.D  
 Acq: 24 Dec 2018 13:00

Tgt Ion: 73 Resp: 55185  
 Ion Ratio Lower Upper  
 73 100  
 57 23.9 18.4 27.6

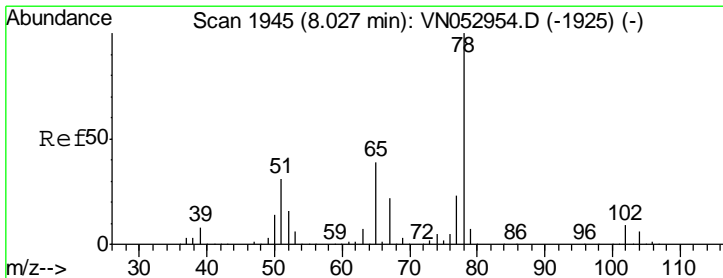
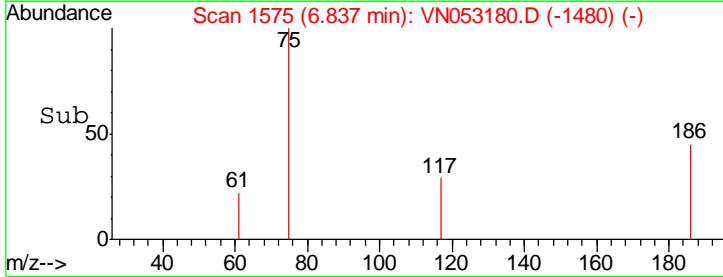
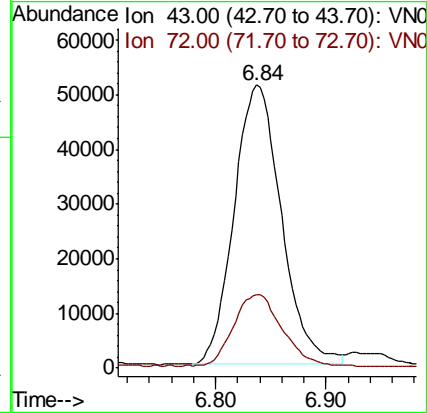
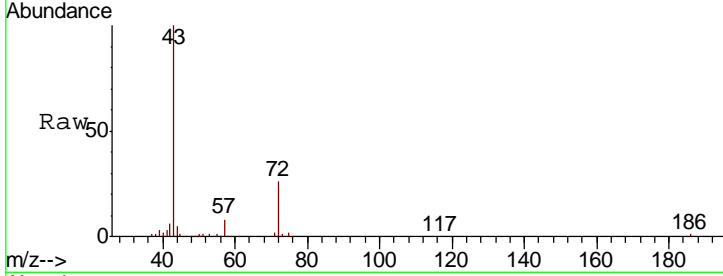




#25  
 2-Butanone  
 Concen: 38.790 ug/l  
 RT: 6.84 min Scan# 1575  
 Delta R.T. 0.01 min  
 Lab File: VN053180.D  
 Acq: 24 Dec 2018 13:00

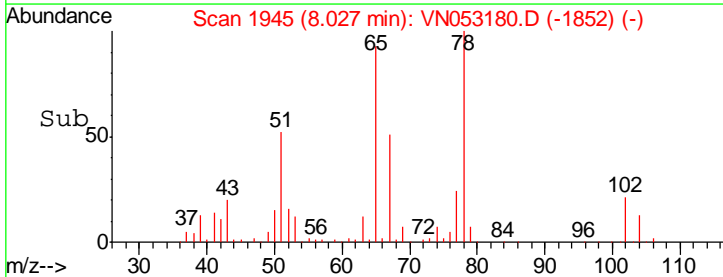
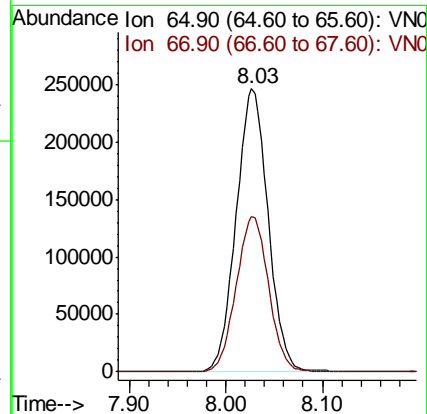
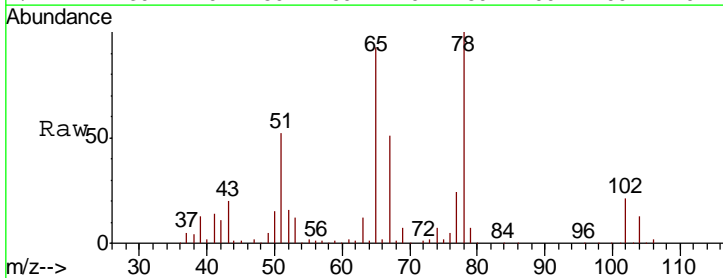
Instrument :  
 MSVOA\_N  
 ClientSampled :  
 23738

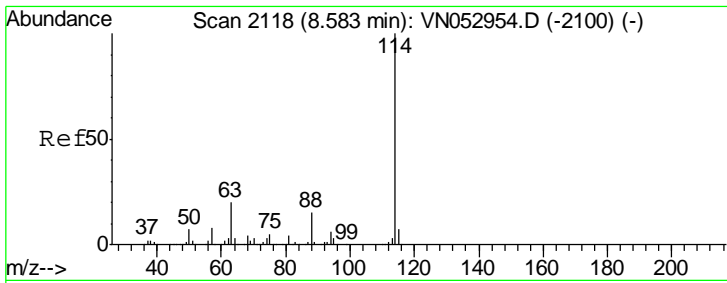
Tgt Ion: 43 Resp: 151946  
 Ion Ratio Lower Upper  
 43 100  
 72 25.7 21.0 31.6



#33  
 1,2-Dichloroethane-d4  
 Concen: Below ug/l  
 RT: 8.03 min Scan# 1945  
 Delta R.T. -0.00 min  
 Lab File: VN053180.D  
 Acq: 24 Dec 2018 13:00

Tgt Ion: 65 Resp: 564722  
 Ion Ratio Lower Upper  
 65 100  
 67 55.7 0.0 110.4

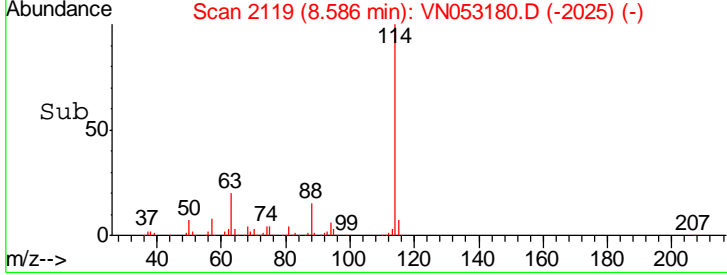
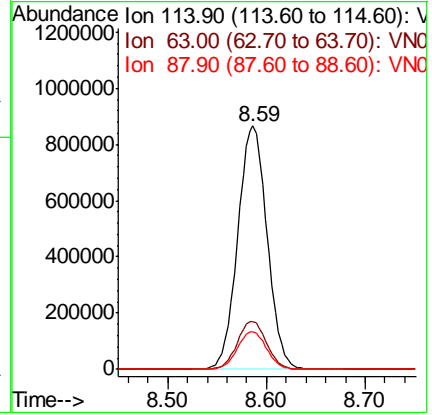
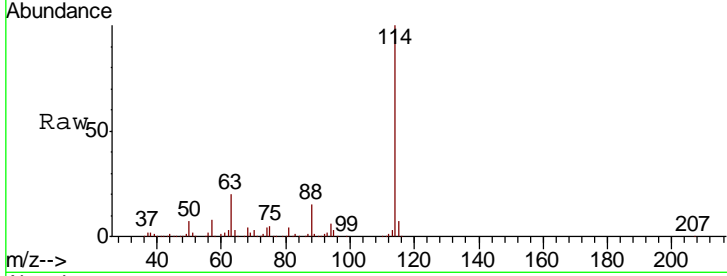




#34  
 1,4-Difluorobenzene  
 Concen: 50.000 ug/l  
 RT: 8.59 min Scan# 2119  
 Delta R.T. 0.00 min  
 Lab File: VN053180.D  
 Acq: 24 Dec 2018 13:00

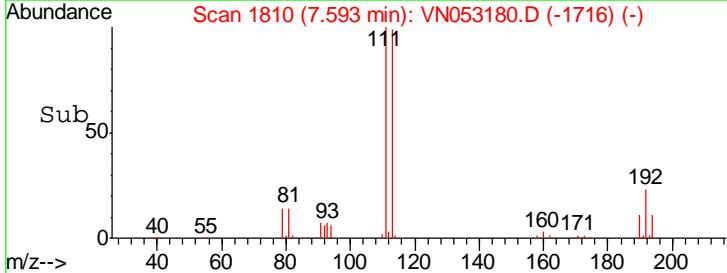
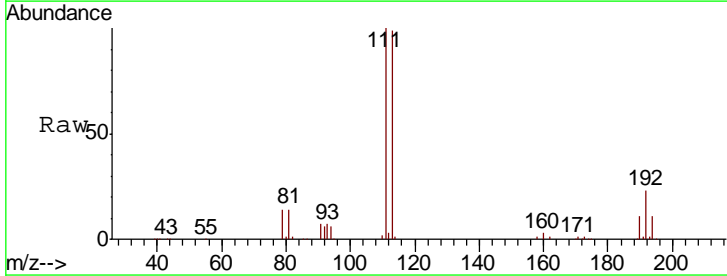
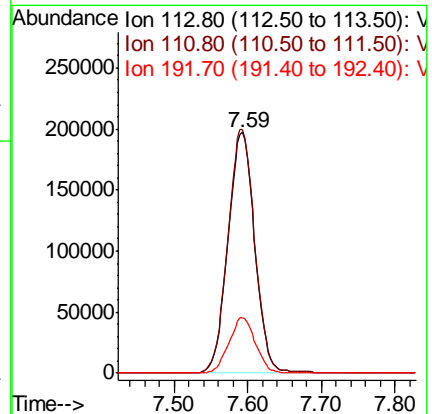
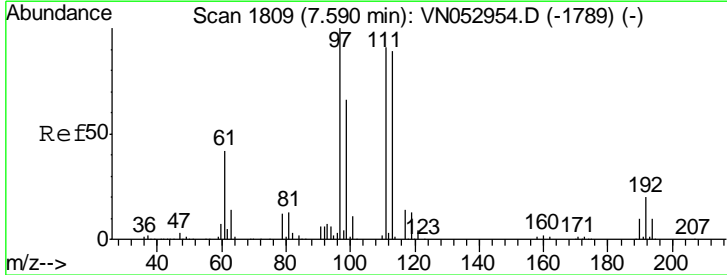
Instrument :  
 MSVOA\_N  
 ClientSampled :  
 23738

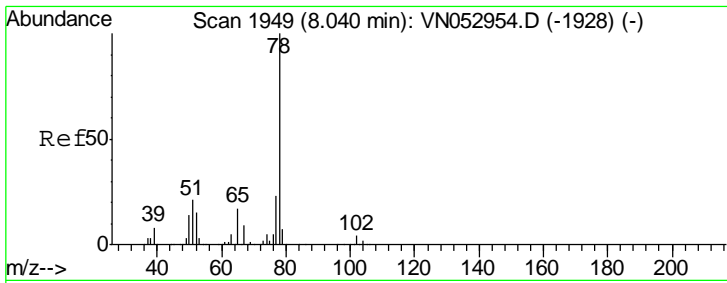
Tgt Ion	Resp	Lower	Upper
114	1789159		
63	19.9	0.0	39.8
88	15.3	0.0	31.0



#35  
 Dibromofluoromethane  
 Concen: 50.000 ug/l  
 RT: 7.59 min Scan# 1810  
 Delta R.T. 0.00 min  
 Lab File: VN053180.D  
 Acq: 24 Dec 2018 13:00

Tgt Ion	Resp	Lower	Upper
113	497752		
111	101.5	83.0	124.4
192	22.7	17.5	26.3

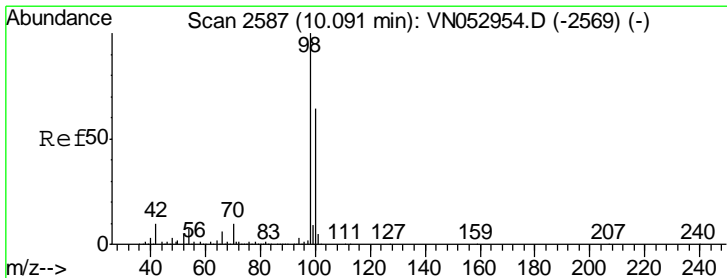
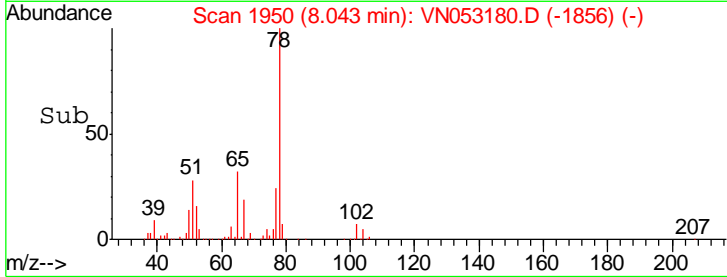
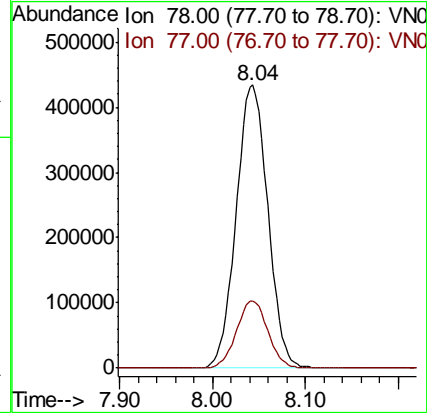
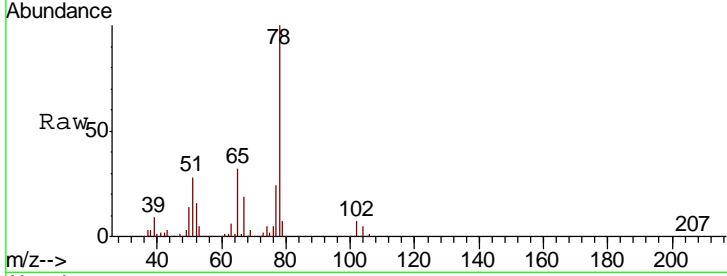




#40  
Benzene  
Concen: 20.112 ug/l  
RT: 8.04 min Scan# 1950  
Delta R.T. 0.00 min  
Lab File: VN053180.D  
Acq: 24 Dec 2018 13:00

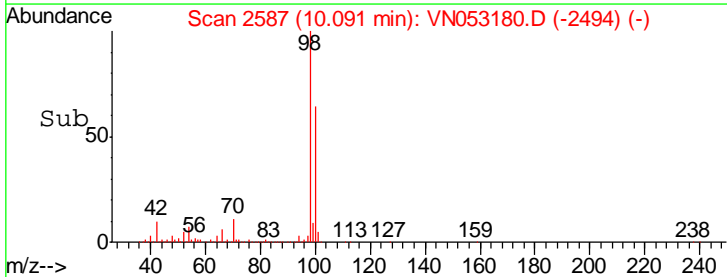
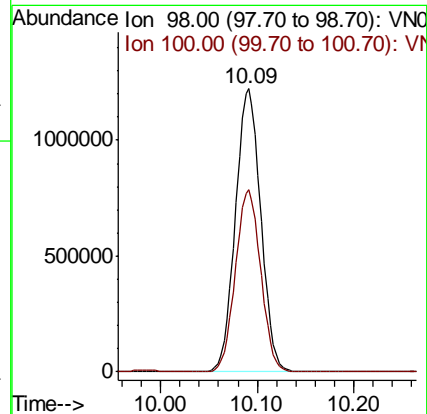
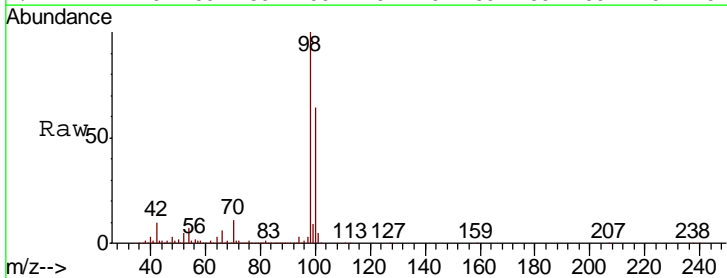
Instrument :  
MSVOA\_N  
ClientSampled :  
23738

Tgt Ion: 78 Resp: 1027326  
Ion Ratio Lower Upper  
78 100  
77 23.8 18.5 27.7

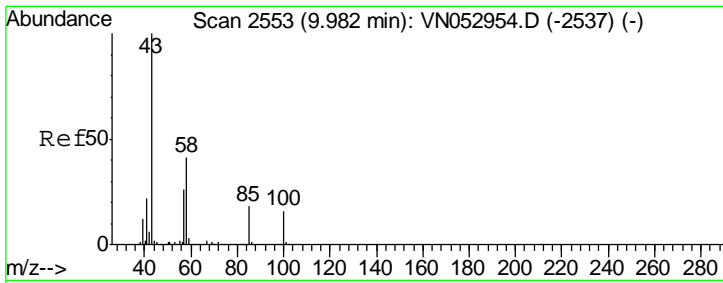


#50  
Toluene-d8  
Concen: N.D. ug/l  
RT: 10.09 min Scan# 2587  
Delta R.T. -0.00 min  
Lab File: VN053180.D  
Acq: 24 Dec 2018 13:00

Tgt Ion: 98 Resp: 2223944  
Ion Ratio Lower Upper  
98 100  
100 64.3 51.6 77.4



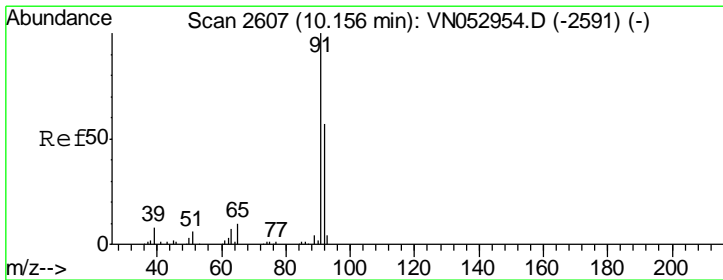
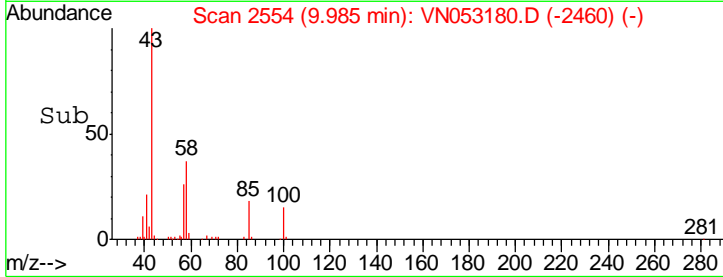
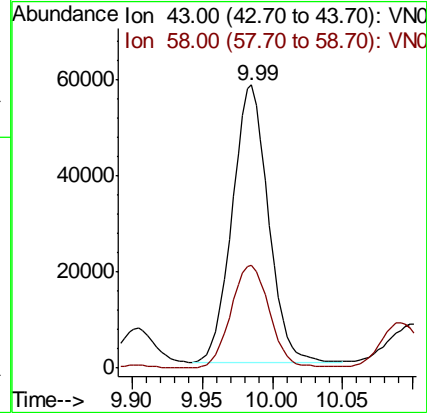
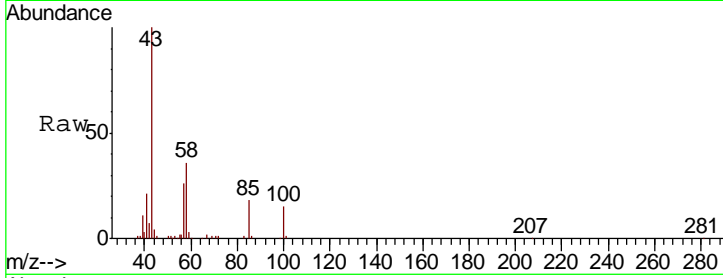




#51  
 4-Methyl-2-Pentanone  
 Concen: 11.102 ug/l  
 RT: 9.99 min Scan# 2554  
 Delta R.T. 0.00 min  
 Lab File: VN053180.D  
 Acq: 24 Dec 2018 13:00

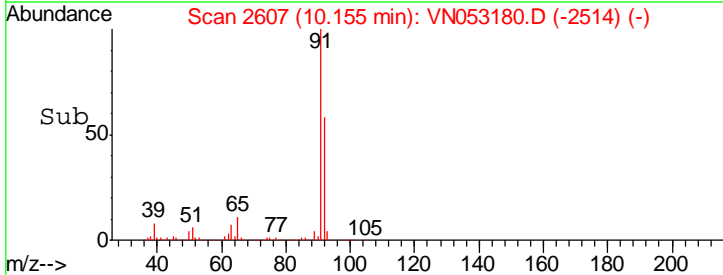
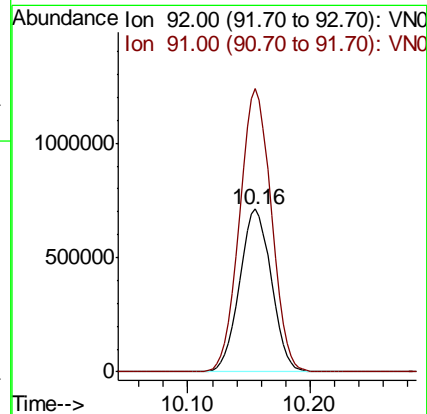
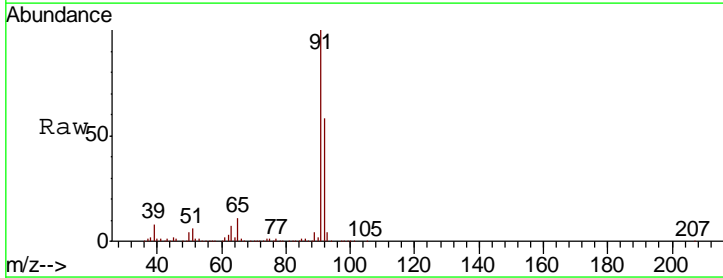
Instrument :  
 MSVOA\_N  
 ClientSampled :  
 23738

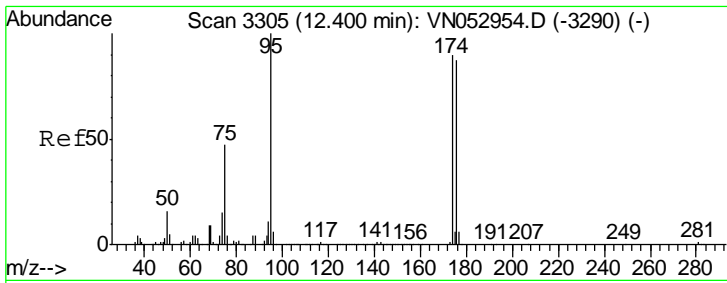
Tgt Ion: 43 Resp: 103067  
 Ion Ratio Lower Upper  
 43 100  
 58 39.8 32.2 48.4



#52  
 Toluene  
 Concen: 40.429 ug/l  
 RT: 10.16 min Scan# 2607  
 Delta R.T. -0.00 min  
 Lab File: VN053180.D  
 Acq: 24 Dec 2018 13:00

Tgt Ion: 92 Resp: 1280027  
 Ion Ratio Lower Upper  
 92 100  
 91 174.0 139.8 209.6

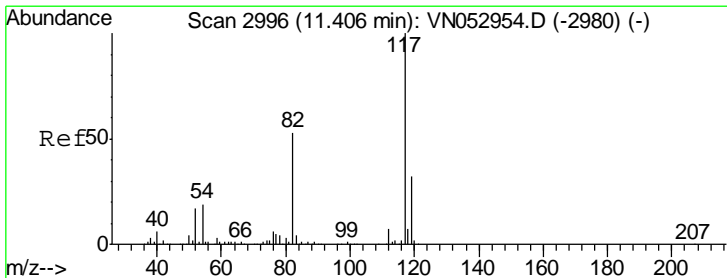
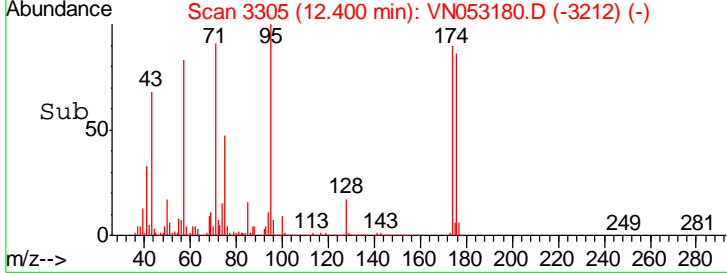
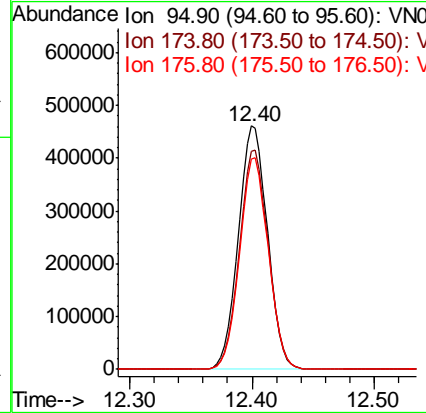
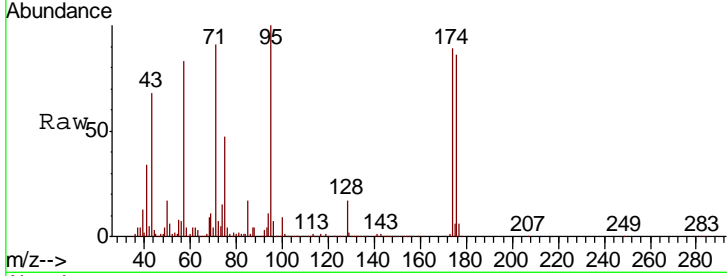




#62  
 4-Bromofluorobenzene  
 Concen: N.D. ug/l  
 RT: 12.40 min Scan# 3305  
 Delta R.T. -0.00 min  
 Lab File: VN053180.D  
 Acq: 24 Dec 2018 13:00

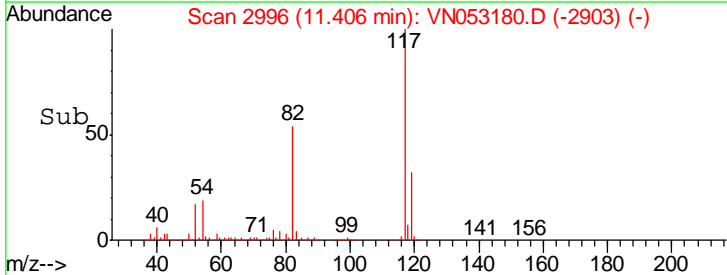
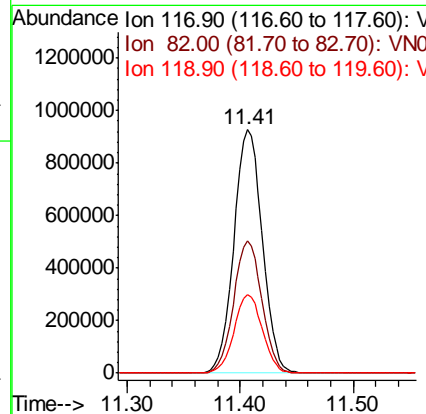
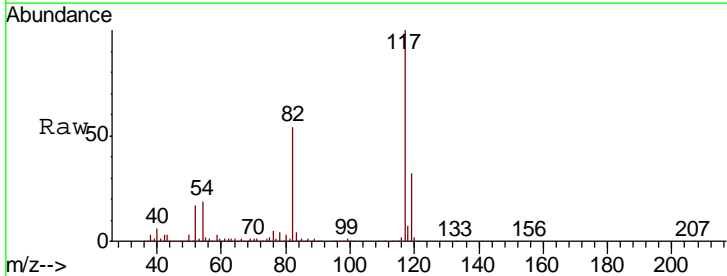
Instrument :  
 MSVOA\_N  
 ClientSampled :  
 23738

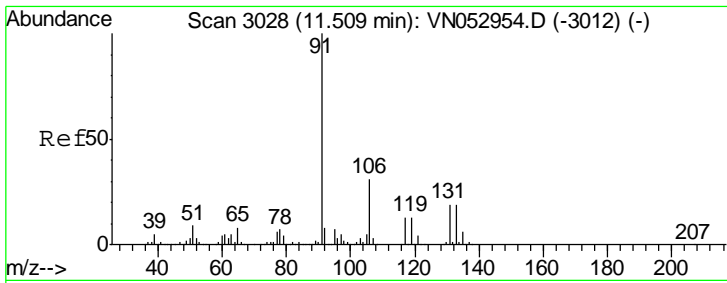
Tgt Ion	Resp	Lower	Upper
95	758571		
174	89.3	0.0	178.8
176	86.0	0.0	173.8



#63  
 Chlorobenzene-d5  
 Concen: 50.000 ug/l  
 RT: 11.41 min Scan# 2996  
 Delta R.T. -0.00 min  
 Lab File: VN053180.D  
 Acq: 24 Dec 2018 13:00

Tgt Ion	Resp	Lower	Upper
117	1618923		
82	54.1	42.8	64.2
119	32.3	25.5	38.3

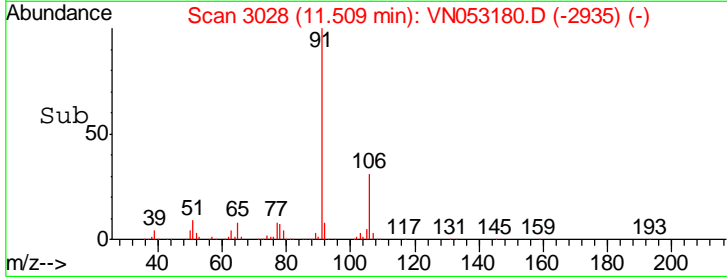
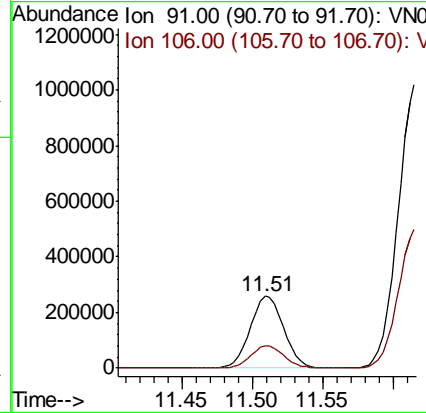
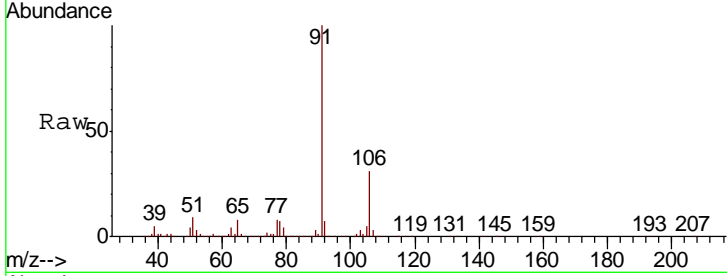




#67  
Ethyl Benzene  
Concen: 6.943 ug/l  
RT: 11.51 min Scan# 3028  
Delta R.T. -0.00 min  
Lab File: VN053180.D  
Acq: 24 Dec 2018 13:00

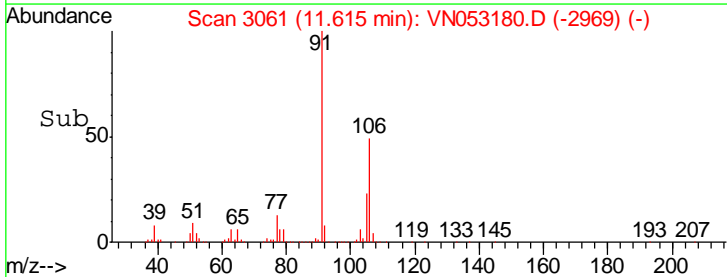
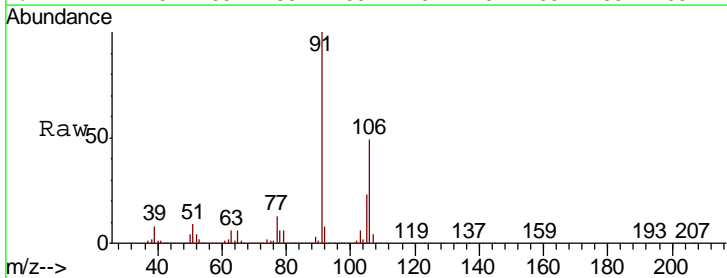
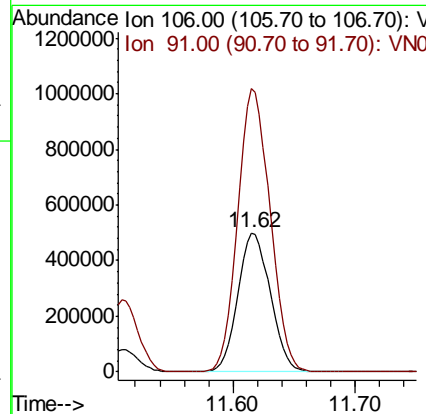
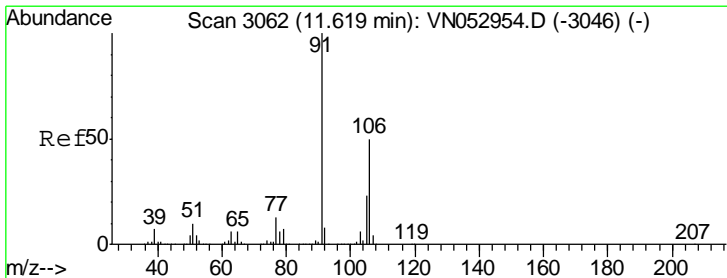
Instrument :  
MSVOA\_N  
ClientSampled :  
23738

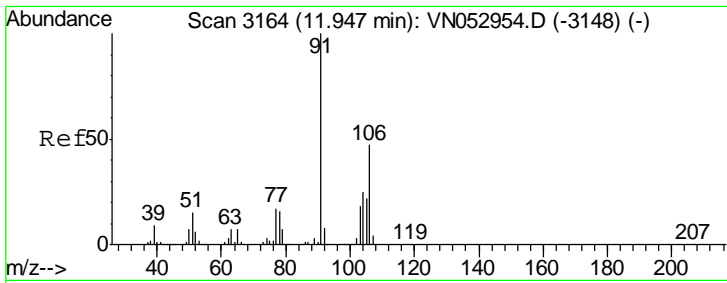
Tgt Ion: 91 Resp: 428500  
Ion Ratio Lower Upper  
91 100  
106 31.1 24.9 37.3



#68  
m/p-Xylenes  
Concen: 39.225 ug/l  
RT: 11.62 min Scan# 3061  
Delta R.T. -0.00 min  
Lab File: VN053180.D  
Acq: 24 Dec 2018 13:00

Tgt Ion: 106 Resp: 920280  
Ion Ratio Lower Upper  
106 100  
91 203.2 162.2 243.4

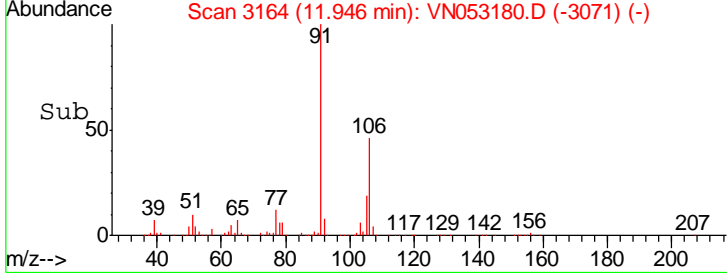
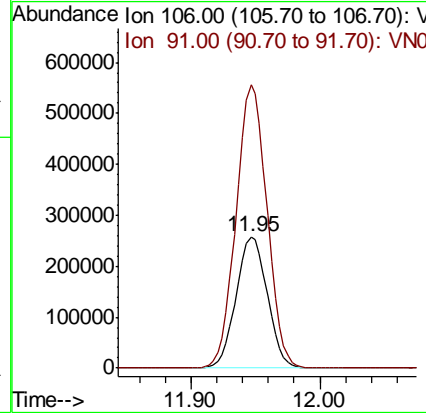
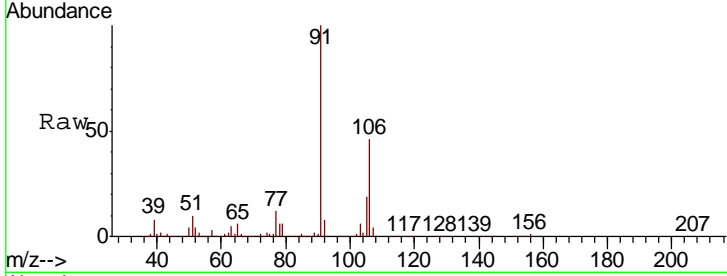




#69  
 o-Xylene  
 Concen: 19.241 ug/l  
 RT: 11.95 min Scan# 3164  
 Delta R.T. -0.00 min  
 Lab File: VN053180.D  
 Acq: 24 Dec 2018 13:00

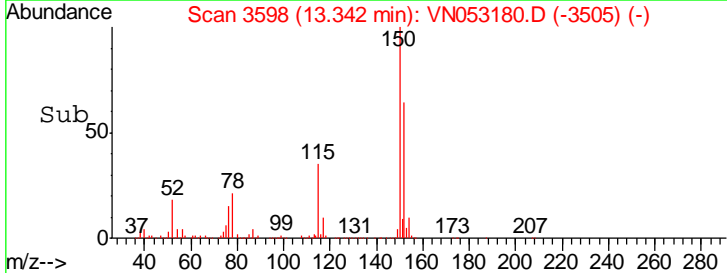
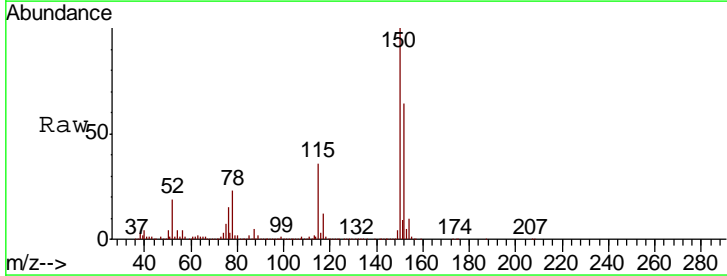
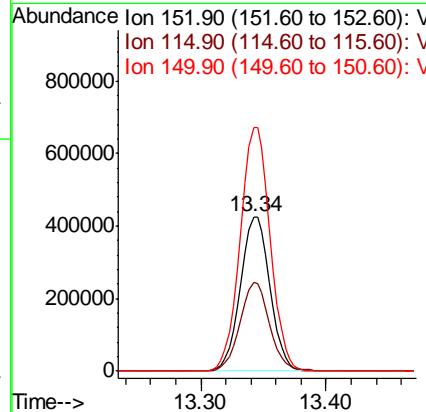
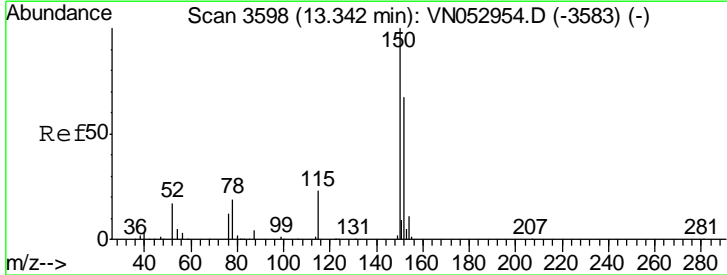
Instrument : MSVOA\_N  
 ClientSampled : 23738

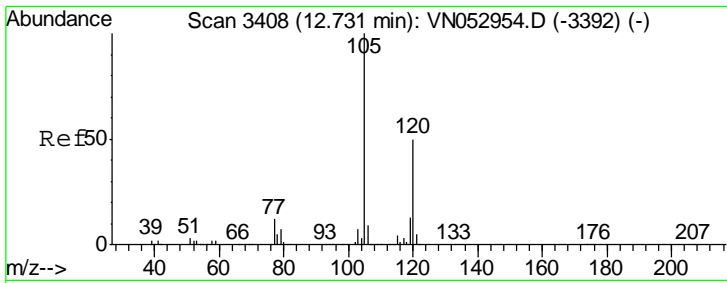
Tgt Ion:	106	Resp:	433193
Ion Ratio	Lower	Upper	
106	100		
91	213.3	106.6	319.8



#72  
 1,4-Dichlorobenzene-d4  
 Concen: 50.000 ug/l  
 RT: 13.34 min Scan# 3598  
 Delta R.T. -0.00 min  
 Lab File: VN053180.D  
 Acq: 24 Dec 2018 13:00

Tgt Ion:	152	Resp:	696356
Ion Ratio	Lower	Upper	
152	100		
115	57.2	28.3	85.0
150	159.6	0.0	347.8

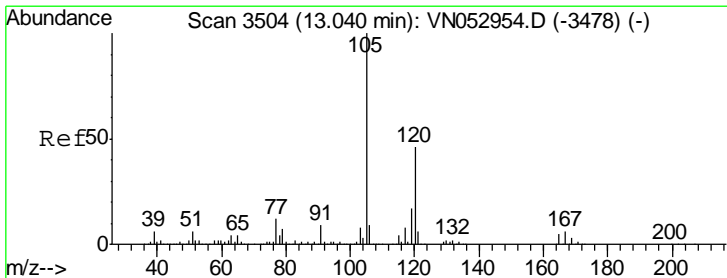
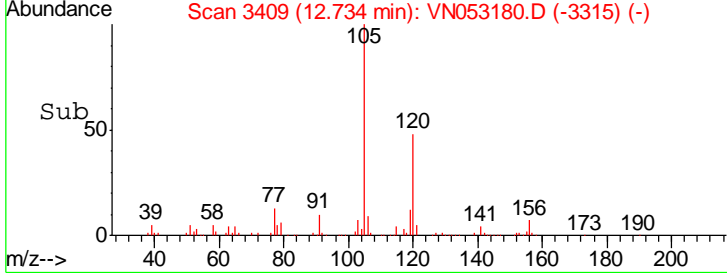
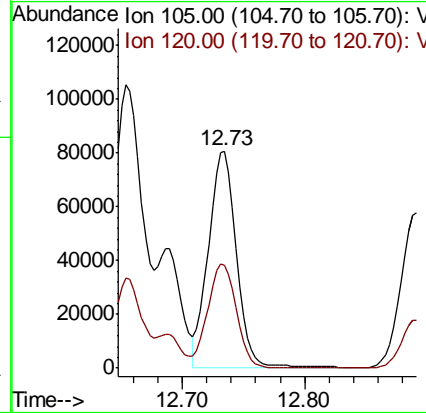
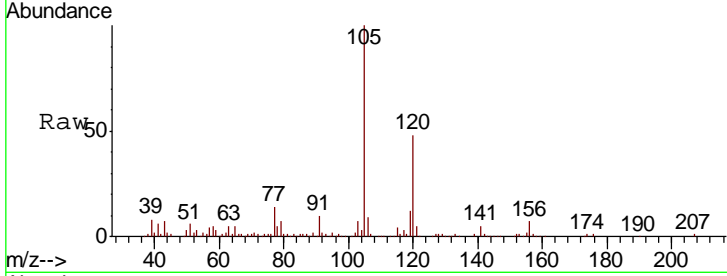




#80  
 1,3,5-Trimethylbenzene  
 Concen: 2.874 ug/l  
 RT: 12.73 min Scan# 3409  
 Delta R.T. 0.00 min  
 Lab File: VN053180.D  
 Acq: 24 Dec 2018 13:00

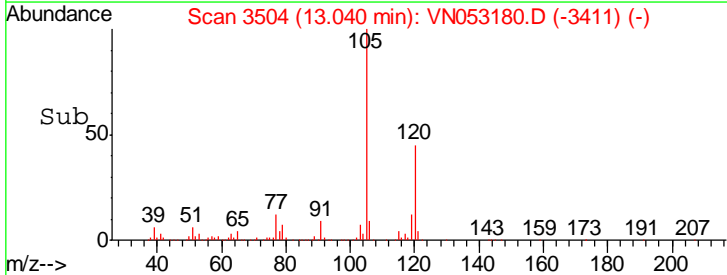
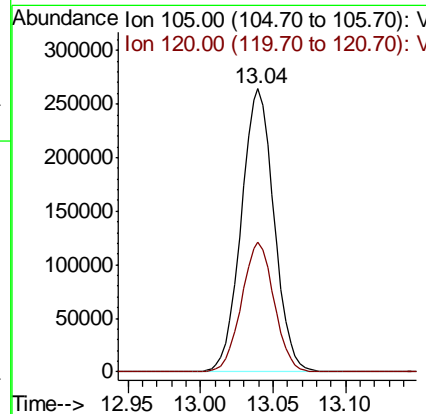
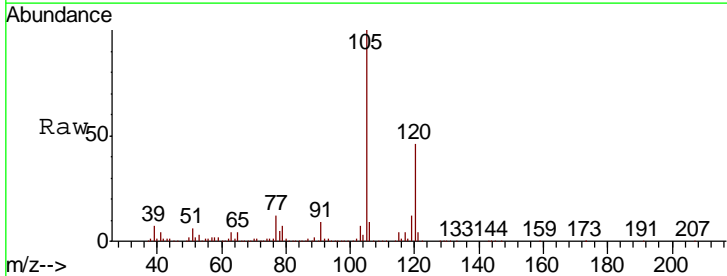
Instrument :  
 MSVOA\_N  
 ClientSampled :  
 23738

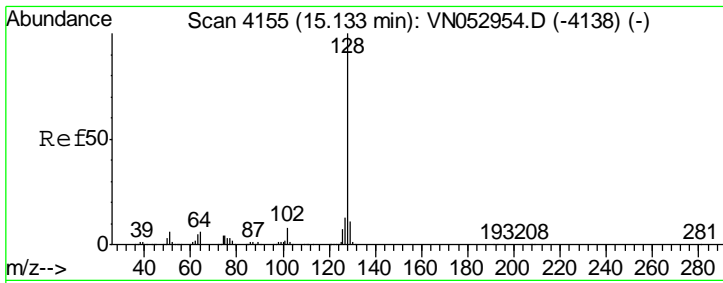
Tgt Ion:105 Resp: 127649  
 Ion Ratio Lower Upper  
 105 100  
 120 49.2 24.4 73.2



#84  
 1,2,4-Trimethylbenzene  
 Concen: 9.252 ug/l  
 RT: 13.04 min Scan# 3504  
 Delta R.T. -0.00 min  
 Lab File: VN053180.D  
 Acq: 24 Dec 2018 13:00

Tgt Ion:105 Resp: 413059  
 Ion Ratio Lower Upper  
 105 100  
 120 45.4 22.9 68.8





#95  
 Naphthalene  
 Concen: 10.364 ug/l  
 RT: 15.13 min Scan# 4155  
 Delta R.T. -0.00 min  
 Lab File: VN053180.D  
 Acq: 24 Dec 2018 13:00

Instrument :  
 MSVOA\_N  
 ClientSampled :  
 23738

Tot Ion	128	Resp	258294
Ion	Ratio	Lower	Upper
128	100		
127	12.5	10.2	15.4
129	10.4	8.6	13.0

