

Data Path : Z:\voasrv\HPCHEM1\MSVOA\_N\Data\VN122820\  
 Data File : VN065275.D  
 Acq On : 28 Dec 2020 10:31  
 Operator : JC/MD  
 Sample : VN1228MBL01  
 Misc : 5.00g/10mL/100uL/5.00mL/MSVCA\_N/MECH  
 ALS Val : 3 Sample Multiplier: 1

**Instrument :**  
 MSVOA\_N  
**ClientSampleId :**  
 VN1228MBL01

Quant Time: Dec 29 02:18:33 2020  
 Quant Method : Z:\voasrv\HPCHEM1\MSVOA\_N\methods\82N12222CW.M  
 Quant Title : SW846 8260  
 QLast Update : Tue Dec 22 15:42:18 2020  
 Response via : Initial Calibration

Compound	R.T.	Clon	Response	Conc	Units	Dev(Min)
<b>Internal Standards</b>						
1) Pentafluorobenzene	7.624	168	237908	50.00	ug/l	0.00
34) 1,4-Difluorobenzene	8.550	114	392285	50.00	ug/l	0.00
63) Chlorobenzene-d5	11.380	117	399291	50.00	ug/l	0.00
72) 1,4-Dichlorobenzene-d4	13.318	152	163612	50.00	ug/l	0.00
<b>System Monitoring Compounds</b>						
33) 1,2-Dichloroethane-d4	7.987	65	134165	49.95	ug/l	0.00
Spiked Amount	50.000	Range	61 - 141	Recovery	=	99.90%
35) Dibromofluoromethane	7.550	113	119927	50.67	ug/l	0.00
Spiked Amount	50.000	Range	69 - 133	Recovery	=	101.34%
50) Toluene-d8	10.058	98	480916	54.22	ug/l	0.00
Spiked Amount	50.000	Range	65 - 126	Recovery	=	108.44%
62) 4-Bromofluorobenzene	12.376	95	185093	52.48	ug/l	0.00
Spiked Amount	50.000	Range	58 - 135	Recovery	=	104.96%

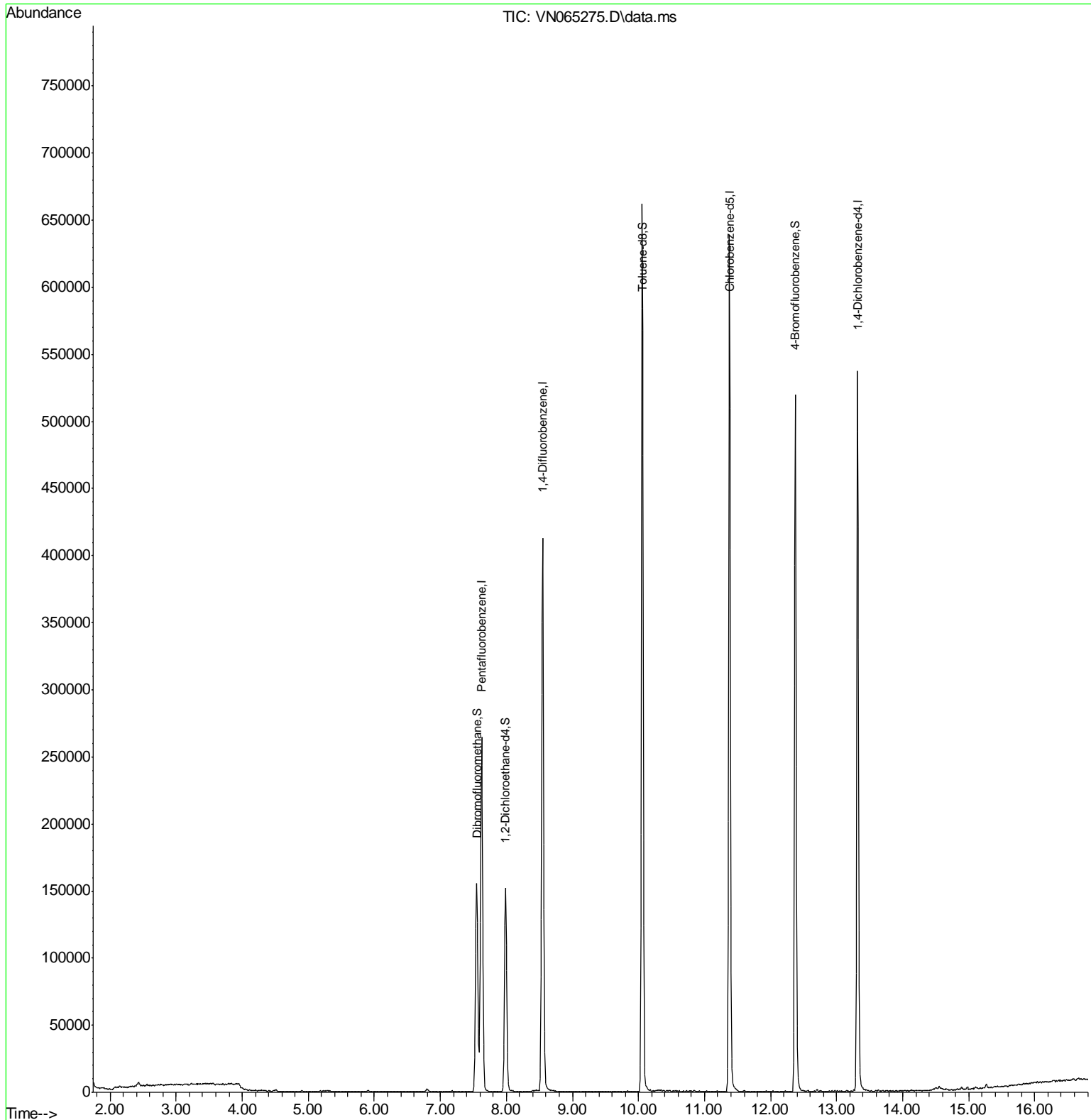
Target Compounds Qvalue

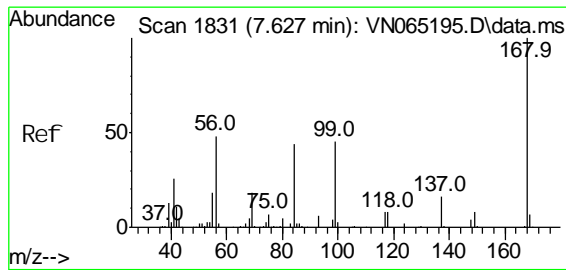
(#) = qualifier out of range (m) = manual integration (+) = signals summed

Data Path : Z:\voasrv\HPCHEM1\MSVOA\_N\Data\VN122820\  
 Data File : VN065275.D  
 Acq On : 28 Dec 2020 10:31  
 Operator : JC/MD  
 Sample : VN1228MBL01  
 Misc : 5.00g/10mL/1CCuL/5.00mL/MSVCA\_N/MECH  
 ALS Vial : 3 Sample Multiplier: 1

**Instrument :**  
 MSVOA\_N  
**ClientSampleId :**  
 VN1228MBL01

Quant Time: Dec 29 02:18:33 2020  
 Quant Method : Z:\voasrv\HPCHEM1\MSVOA\_N\methods\82N122220W.M  
 Quant Title : SW846 8260  
 QLast Update : Tue Dec 22 15:42:18 2020  
 Response via : Initial Calibration

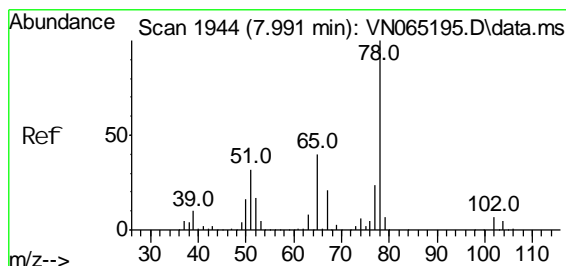
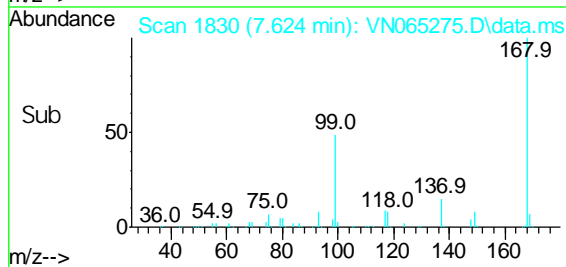
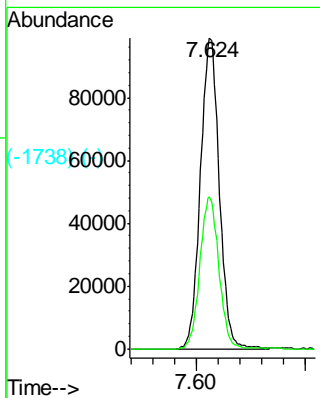
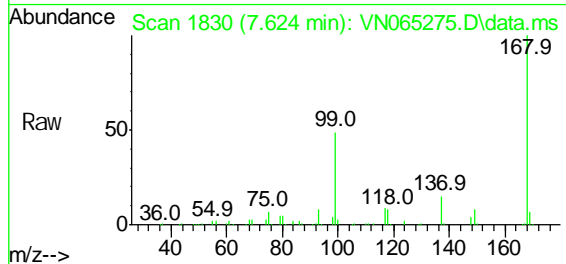




#112 (-)  
 Pentafluorobenzene  
 Concen: 50.00 ug/l  
 RT: 7.624 min Scan# 1830  
 Delta R.T. -0.003 min  
 Lab File: VN065275.D  
 Acq: 28 Dec 2020 10:31

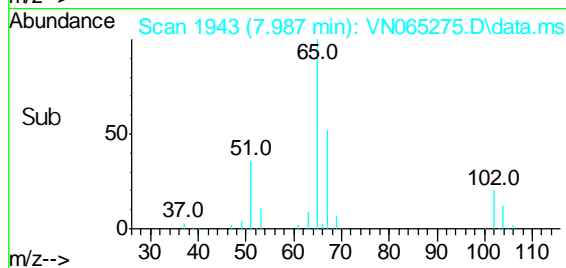
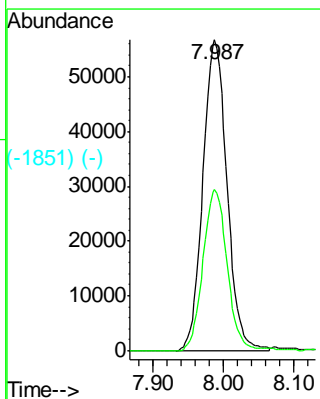
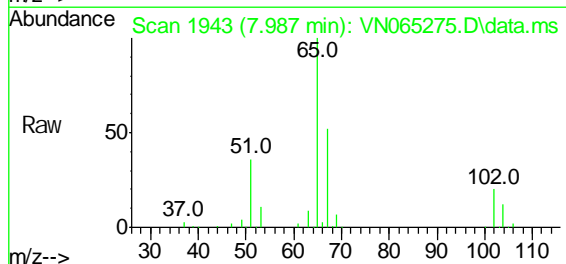
**Instrument :**  
 MSVOA\_N  
**Client Sampled :**  
 VN1228MBL01

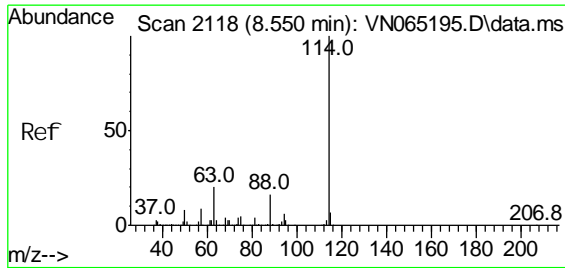
Tgt Ion: 168 Resp: 237908  
 Ion Ratio Lower Upper  
 168 100  
 99 48.9 43.0 64.4



#126 (-)  
 1,2-Dichloroethane-d4  
 Concen: 49.95 ug/l  
 RT: 7.987 min Scan# 1943  
 Delta R.T. -0.004 min  
 Lab File: VN065275.D  
 Acq: 28 Dec 2020 10:31

Tgt Ion: 65 Resp: 134165  
 Ion Ratio Lower Upper  
 65 100  
 67 51.8 0.0 108.2

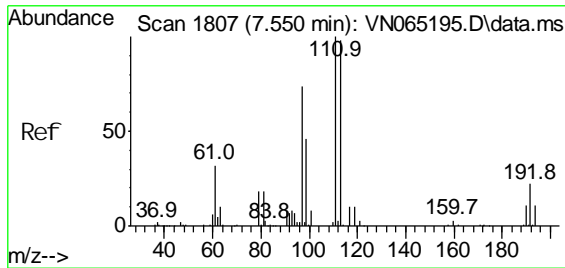
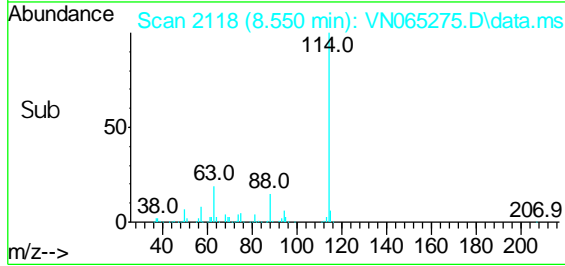
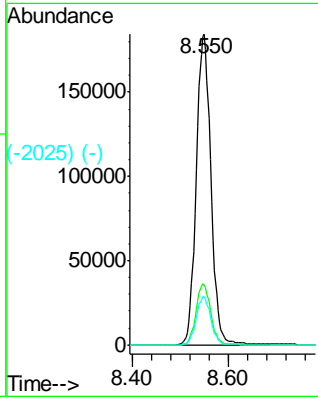
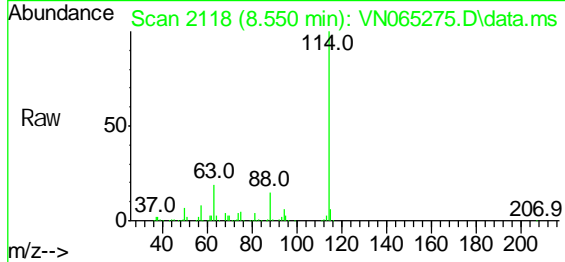




#231 (-)  
 1, 4-Di fluorobenzene  
 Concen: 50.00 ug/l  
 RT: 8.550 min Scan# 2118  
 Delta R.T. 0.000 min  
 Lab File: VN065275.D  
 Acq: 28 Dec 2020 10:31

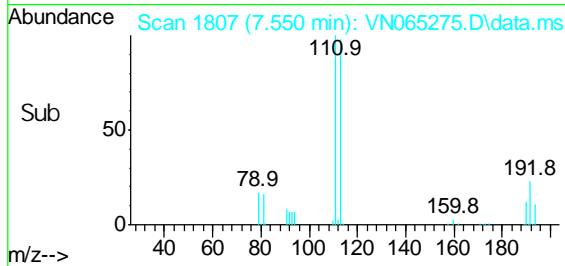
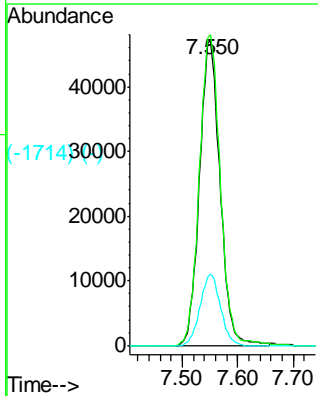
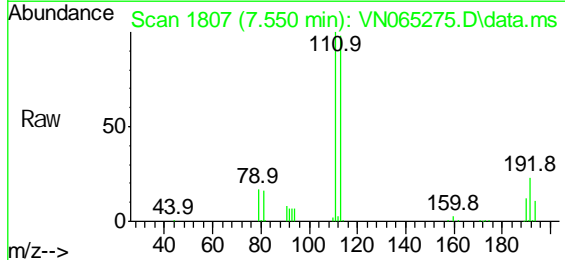
**Instrument :**  
 MSVOA\_N  
**ClientSampled :**  
 VN1228MBL01

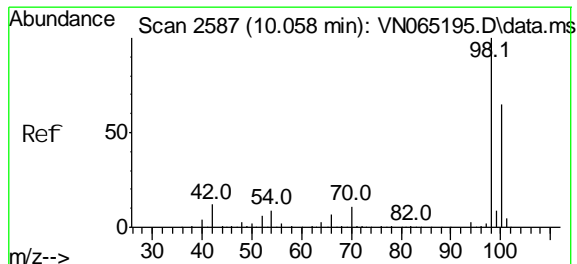
Tgt Ion: 114 Resp: 392285  
 Ion Ratio Lower Upper  
 114 100  
 63 19.5 0.0 38.6  
 88 15.5 0.0 32.6



#238 (-)  
 Dibromofluoromethane  
 Concen: 50.67 ug/l  
 RT: 7.550 min Scan# 1807  
 Delta R.T. 0.000 min  
 Lab File: VN065275.D  
 Acq: 28 Dec 2020 10:31

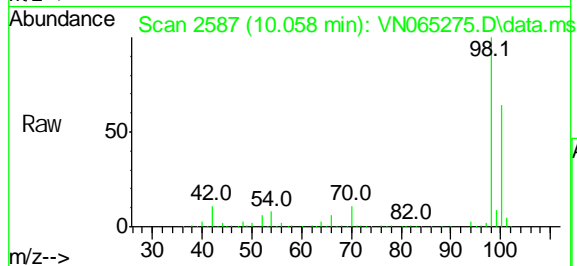
Tgt Ion: 113 Resp: 119927  
 Ion Ratio Lower Upper  
 113 100  
 111 104.2 81.6 122.4  
 192 23.2 16.2 24.2



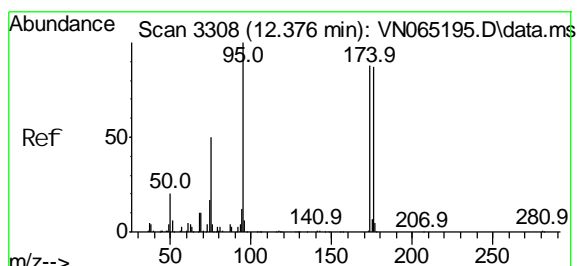
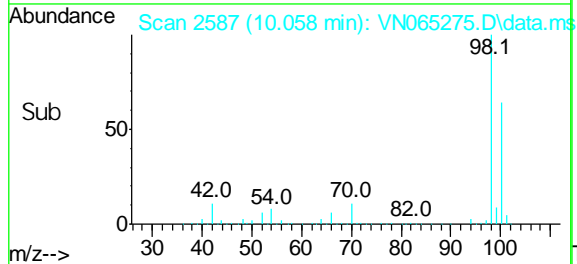
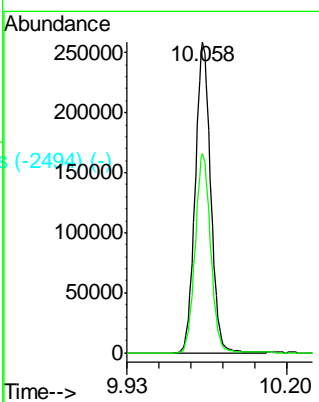


Scan 2587 (10.058 min): VN065195.D\data.ms (#2971) (-)  
 Tol uene-d8  
 Concen: 54.22 ug/l  
 RT: 10.058 min Scan# 2587  
 Delta R.T. C.000 min  
 Lab File: VN065275.D  
 Acq: 28 Dec 2020 10:31

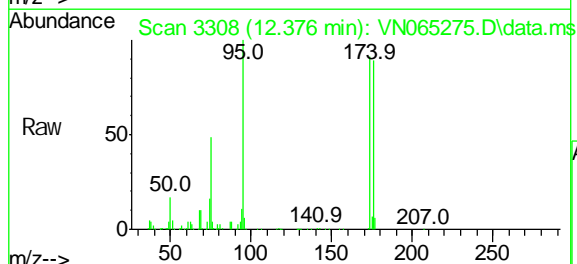
**Instrument :**  
 MSVOA\_N  
**Client Sampled :**  
 VN1228MBL01



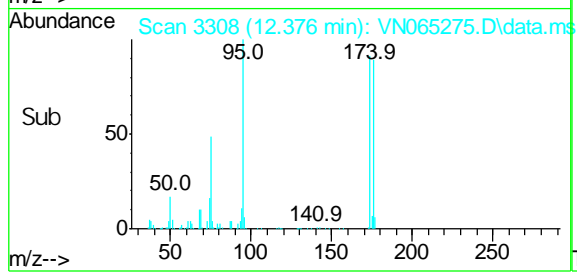
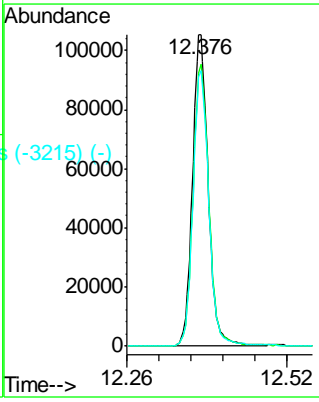
Tgt Ion: 98 Resp: 480916  
 Ion Ratio Lower Upper  
 98 100  
 100 64.1 51.7 77.5

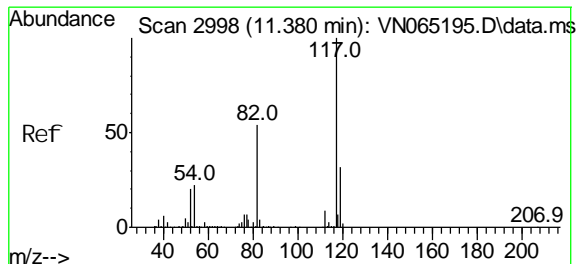


Scan 3308 (12.376 min): VN065195.D\data.ms (#6294) (-)  
 4-Bromofluorobenzene  
 Concen: 52.48 ug/l  
 RT: 12.376 min Scan# 3308  
 Delta R.T. 0.000 min  
 Lab File: VN065275.D  
 Acq: 28 Dec 2020 10:31



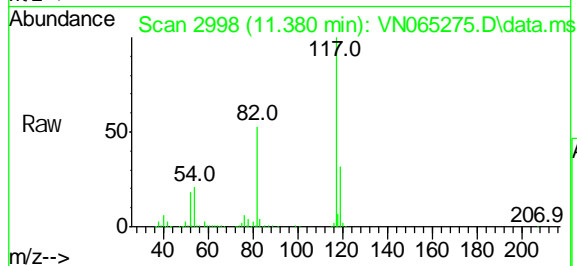
Tgt Ion: 95 Resp: 185093  
 Ion Ratio Lower Upper  
 95 100  
 174 90.9 0.0 160.4  
 176 88.4 0.0 158.4



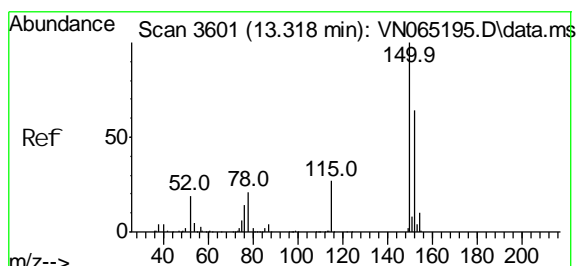
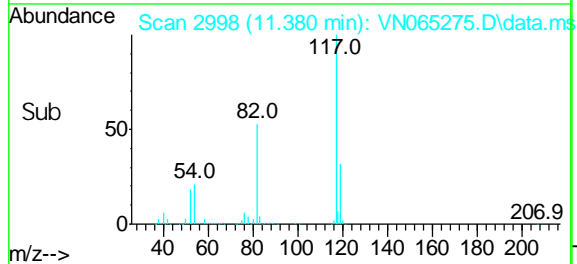
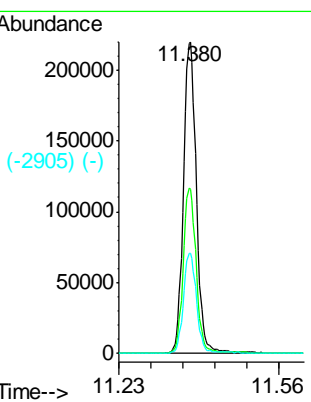


#2983 (-)  
 Chl orobenzene-d5  
 Concen: 50.00 ug/l  
 RT: 11.380 min Scan# 2998  
 Delta R.T. -0.000 min  
 Lab File: VN065275.D  
 Acq: 28 Dec 2020 10:31

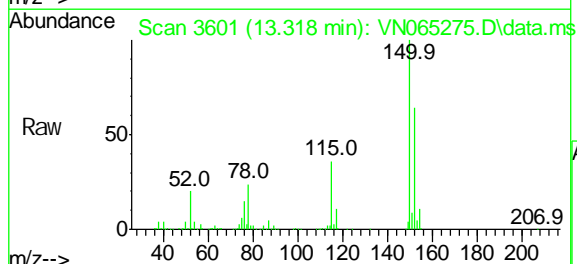
**Instrument :**  
 MSVOA\_N  
**Client Sampled :**  
 VN1228MBL01



Tgt Ion: 117 Resp: 399291  
 Ion Ratio Lower Upper  
 117 100  
 82 52.7 44.2 66.2  
 119 32.1 25.8 38.6



#3587 (-)  
 1,4-Di chl orobenzene-d4  
 Concen: 50.00 ug/l  
 RT: 13.318 min Scan# 3601  
 Delta R.T. 0.000 min  
 Lab File: VN065275.D  
 Acq: 28 Dec 2020 10:31



Tgt Ion: 152 Resp: 163612  
 Ion Ratio Lower Upper  
 152 100  
 115 55.5 29.7 89.1  
 150 156.5 0.0 350.6

