

Data Path : Z:\voasrv\HPCHEM1\MSVOA_N\Data\VN122920\
 Data File : VN065303.D
 Acq On : 29 Dec 2020 13:32
 Operator : JC/MD
 Sample : L5223-07 50X
 Misc : 5.00mL/MSVOA_N/WATER
 ALS Vial : 10 Sample Multiplier: 1

Instrument :
 MSVOA_N
 ClientSampleId :
 DRUM-COMP

Integration Parameters: RTEINT.P
 Integrator: RTE
 Smoothing : ON
 Sampling : 1
 Start Thrs: 0.2
 Stop Thrs : 0
 Filtering: 5
 Min Area: 3 % of Largest Peak
 Max Peaks: 100
 Peak Location: TOP

If leading or trailing edge < 100 prefer < Baseline drop else tangent >
 Peak separation: 5

Method : Z:\voasrv\HPCHEM1\MSVOA_N\methods\82N122220W.M
 Title : SW846 8260

Signal : TIC: VN065303.D\data.ms

peak #	R.T. min	first scan	max scan	last scan	PK TY	peak height	corr. area	corr. % max.	% of total
1	2.300	160	174	197	rBV	77231	131882	9.01%	1.715%
2	3.255	460	471	489	rVB	11907	26439	1.81%	0.344%
3	7.553	1789	1808	1819	rBV	188556	472125	32.26%	6.138%
4	7.627	1819	1831	1863	rVB	377050	899093	61.43%	11.689%
5	7.991	1926	1944	1965	rBV	204187	480458	32.82%	6.246%
6	8.550	2102	2118	2145	rBV	516046	1073408	73.33%	13.955%
7	10.058	2572	2587	2602	rBV	793246	1463708	100.00%	19.030%
8	11.380	2980	2998	3024	rBV	687593	1242240	84.87%	16.150%
9	12.376	3295	3308	3333	rBV	534377	930098	63.54%	12.092%
10	13.318	3588	3601	3621	rBV	566632	972274	66.43%	12.641%

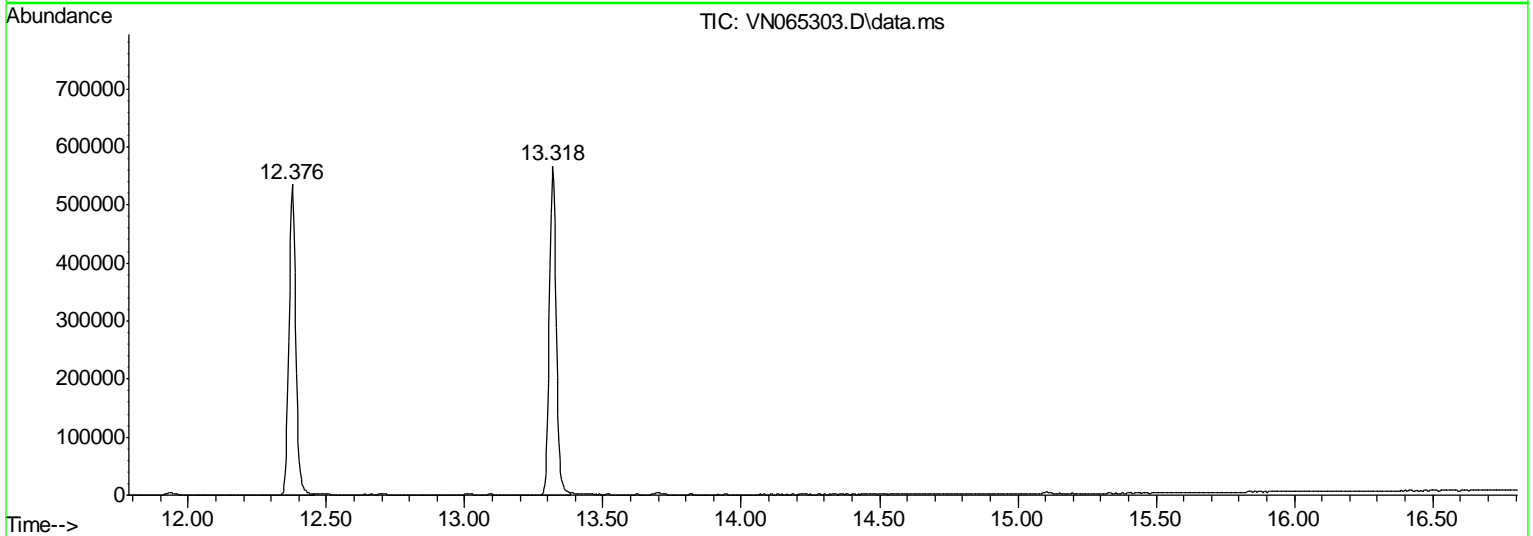
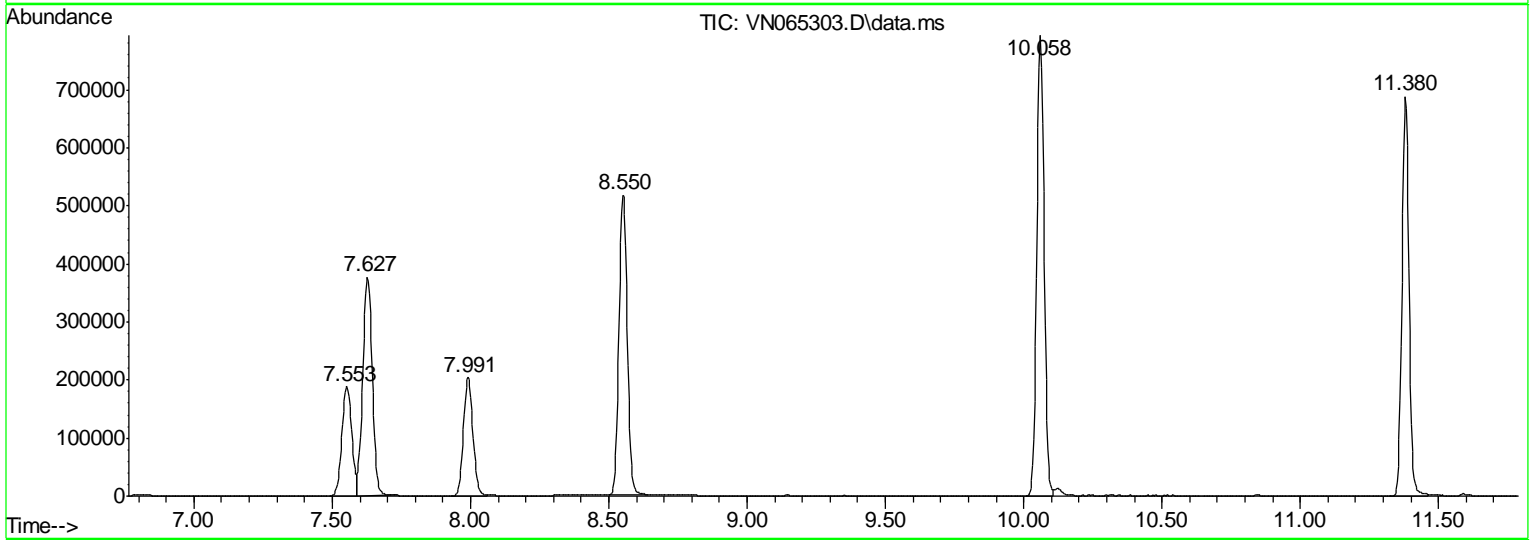
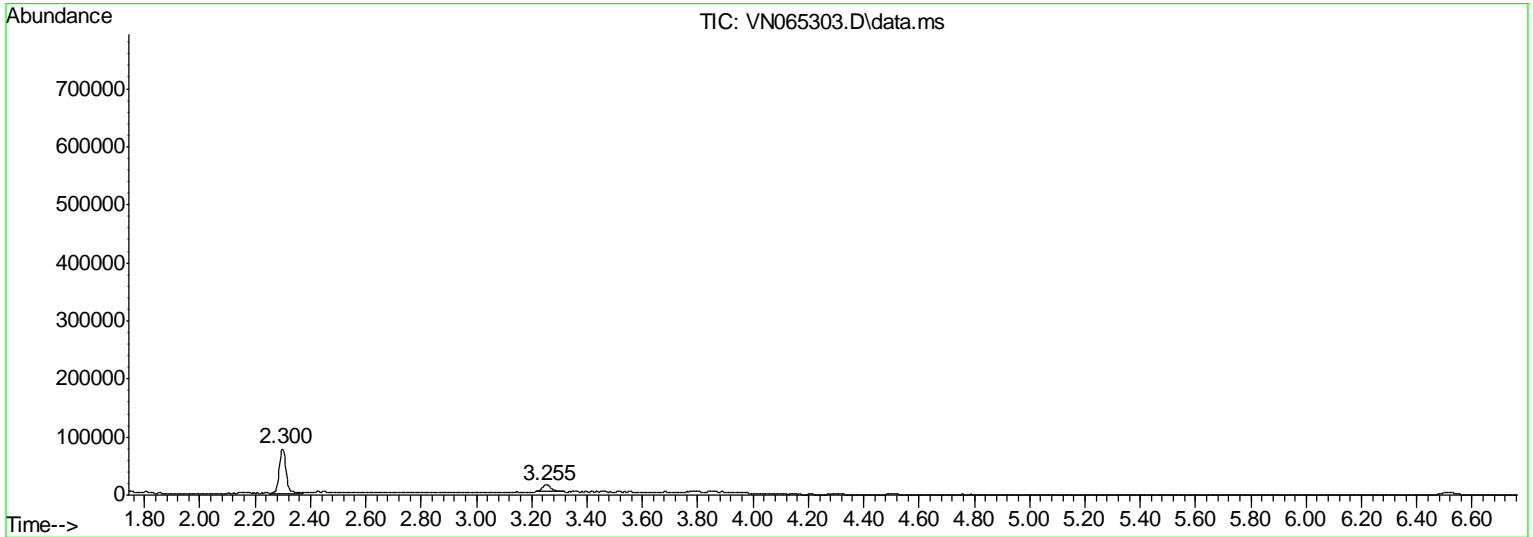
Sum of corrected areas: 7691725

Data Path : Z:\voasrv\HPCHEM1\MSVOA_N\Data\VN122920\
 Data File : VN065303.D
 Acq On : 29 Dec 2020 13:32
 Operator : JC/MD
 Sample : L5223-07 50X
 Mi sc : 5.00mL/MSVOA_N/WATER
 ALS Vial : 10 Sample Multiplier: 1

Instrument :
 MSVOA_N
ClientSampled :
 DRUM-COMP

Quant Method : Z:\voasrv\HPCHEM1\MSVOA_N\methods\82N122220W.M
 Quant Title : SW846 8260

TIC Library : C:\DATABASE\NI ST11.L
 TIC Integration Parameters: LSCINT.P



Data Path : Z:\voasrv\HPCHEM1\MSVOA_N\Data\VN12292\
 Data File : VN065303.D
 Acq On : 29 Dec 2020 13:32
 Operator : JC/MD
 Sample : L5223-07 50X
 Mi sc : 5.00mL/MSVOA_N/WATER
 ALS Vial : 10 Sample Multiplier: 1

Instrument :
 MSVOA_N
 ClientSampleId :
 DRUM-COMP

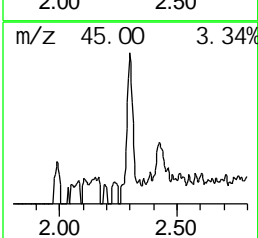
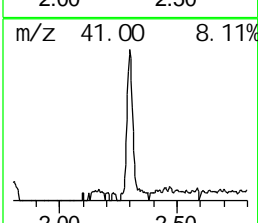
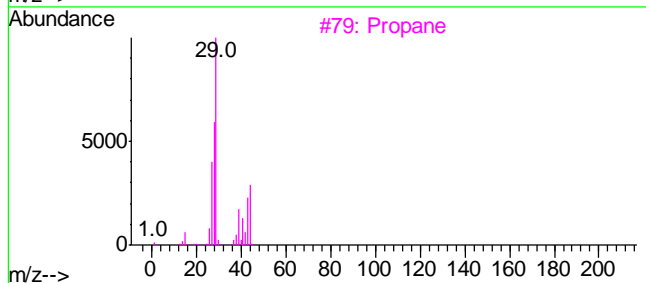
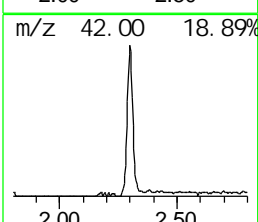
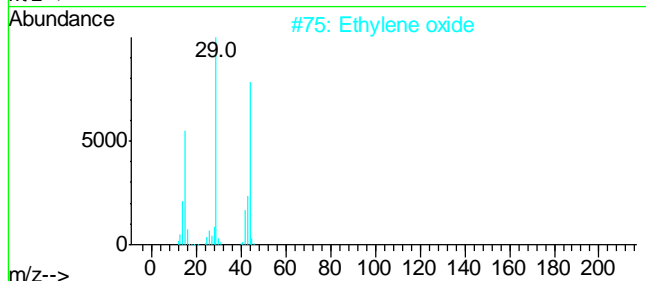
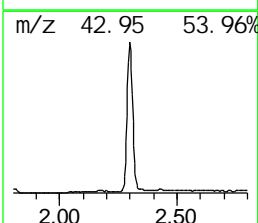
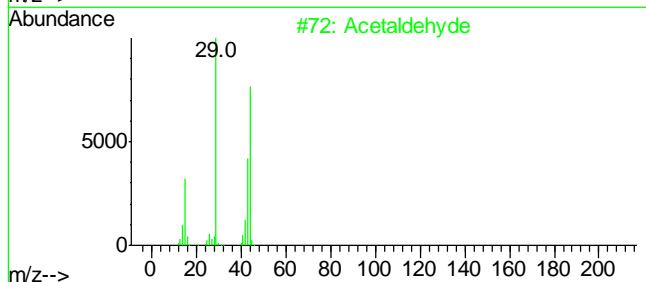
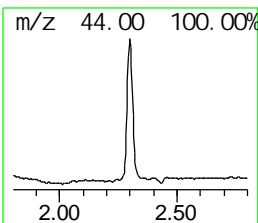
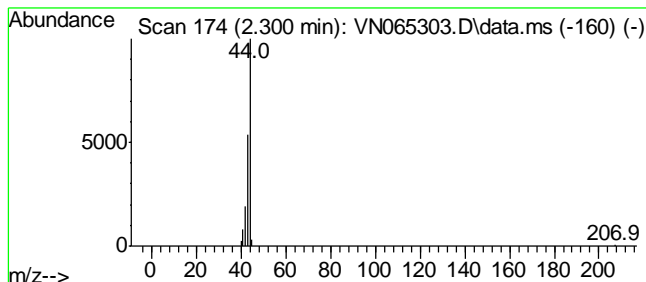
Quant Method : Z:\voasrv\HPCHEM1\MSVOA_N\methods\82N122220W.M
 Quant Title : SW846 8260

TIC Library : C:\DATABASE\NIST11.L
 TIC Integration Parameters: LSCINT.P

Peak Number 1 Acetaldehyde Concentration Rank 1

R. T.	EstConc	Area	Relative to ISTD	R. T.
2.300	7.33 ug/l	131882	Pentafluorobenzene	7.627

Hit# of 5	Tentative ID	MM	Mol Form	CAS#	Qual
1	Acetaldehyde	44	C2H4O	000075-07-0	74
2	Ethylene oxide	44	C2H4O	000075-21-8	5
3	Propane	44	C3H8	000074-98-6	4
4	1-Propanol, 2-amino-, (S)-	75	C3H9NO	002749-11-3	4
5	Cyclopropyl carbene	72	C4H8O	002516-33-8	4



Data Path : Z:\voasrv\HPCHEM1\MSVOA_N\Data\VN122920\
 Data File : VN065303.D
 Acq On : 29 Dec 2020 13:32
 Operator : JC/MD
 Sample : L5223-07 50X
 Misc : 5.00mL/MSVOA_N/WATER
 ALS Vial : 10 Sample Multiplier: 1

Instrument :
 MSVOA_N
ClientSampleId :
 DRUM-COMP

Quant Method : Z:\voasrv\HPCHEM1\MSVOA_N\methods\82N122220W.M
 Quant Title : SW846 8260

TIC Library : C:\DATABASE\NI ST11.L
 TIC Integration Parameters: LSCINT.P

TIC Top Hit name	RT	EstConc	Units	Response	--Internal Standard--			
					#	RT	Resp	Conc
Acetaldehyde	2.300	7.3	ug/l	131882	1	7.627	899093	50.0