

Data Path : Z:\voasrv\HPCHEM1\MSVOA\_N\Data\VN123020\  
 Data File : VN065316.D  
 Acq On : 30 Dec 2020 13:28  
 Operator : JC/MD  
 Sample : L5224-01 10X  
 Misc : 1.51g/10mL/100uL/5.00mL/MSVCA\_N/MECH  
 ALS Val : 7 Sample Multiplier: 1

**Instrument :**  
 MSVOA\_N  
**Client Sampled :**  
 DRUM-COMP-1

Quant Time: Dec 31 03:01:38 2020  
 Quant Method : Z:\voasrv\HPCHEM1\MSVOA\_N\methods\82N12222CW.M  
 Quant Title : SW846 8260  
 QLast Update : Tue Dec 22 15:42:18 2020  
 Response via : Initial Calibration

Compound	R.T.	Cl on	Response	Conc	Units	Dev(Min)
-----						
Internal Standards						
1) Pentafluorobenzene	7.627	168	235956	50.00	ug/l	0.00
34) 1,4-Difluorobenzene	8.553	114	386383	50.00	ug/l	0.00
63) Chlorobenzene-d5	11.380	117	407407	50.00	ug/l	0.00
72) 1,4-Dichlorobenzene-d4	13.315	152	162522	50.00	ug/l	0.00
System Monitoring Compounds						
33) 1,2-Dichloroethane-d4	7.991	65	132303	49.67	ug/l	0.00
Spiked Amount	50.000	Range	61 - 141	Recovery	=	99.34%
35) Dibromofluoromethane	7.553	113	118857	50.99	ug/l	0.00
Spiked Amount	50.000	Range	69 - 133	Recovery	=	101.98%
50) Toluene-d8	10.058	98	481705	55.14	ug/l	0.00
Spiked Amount	50.000	Range	65 - 126	Recovery	=	110.28%
62) 4-Bromofluorobenzene	12.376	95	184533	53.06	ug/l	0.00
Spiked Amount	50.000	Range	58 - 135	Recovery	=	106.12%

Target Compounds Qvalue

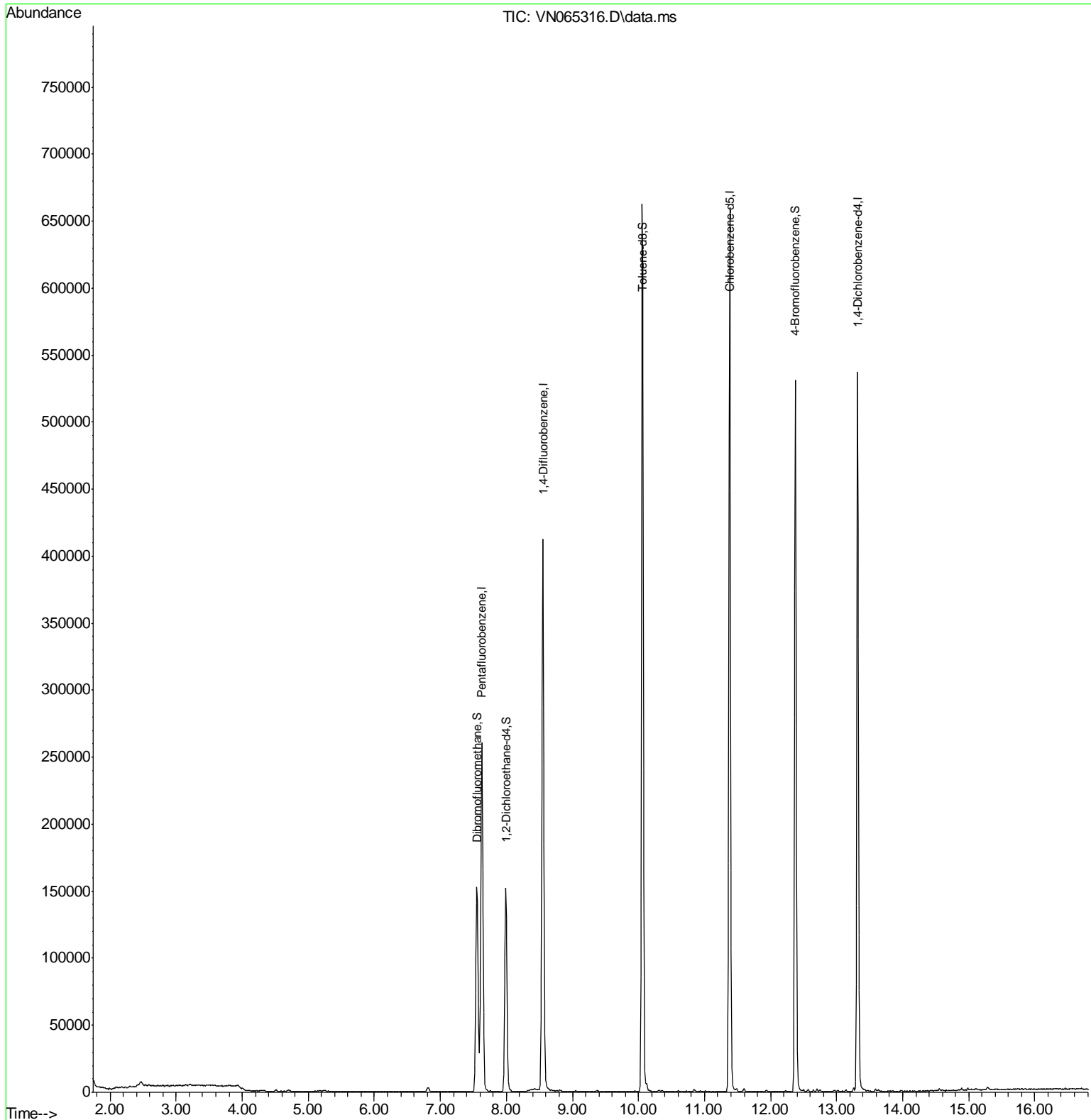
-----

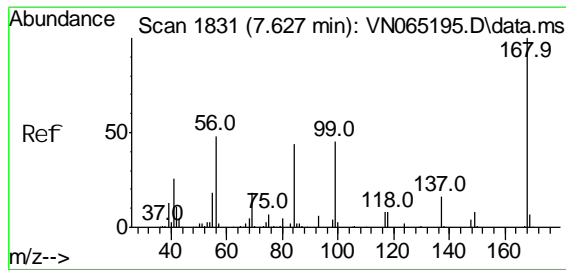
(#) = qualifier out of range (m) = manual integration (+) = signals summed

Data Path : Z:\voasrv\HPCHEM1\MSVOA\_N\Data\VN123020\  
 Data File : VNO65316.D  
 Acq On : 30 Dec 2020 13:28  
 Operator : JC/MD  
 Sample : L5224-01 10X  
 Mi sc : 1.51g/10mL/1CCuL/5.00mL/MSVCA\_N/MECH  
 ALS Vial : 7 Sample Multiplier: 1

**Instrument :**  
 MSVOA\_N  
**ClientSampled :**  
 DRUM-COMP-1

Quant Time: Dec 31 03:01:38 2020  
 Quant Method : Z:\voasrv\HPCHEM1\MSVOA\_N\methods\82N122220W.M  
 Quant Title : SW846 8260  
 QLast Update : Tue Dec 22 15:42:18 2020  
 Response via : Initial Calibration

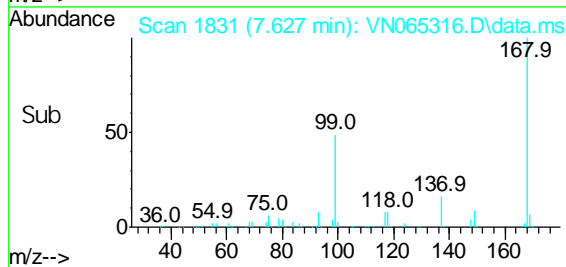
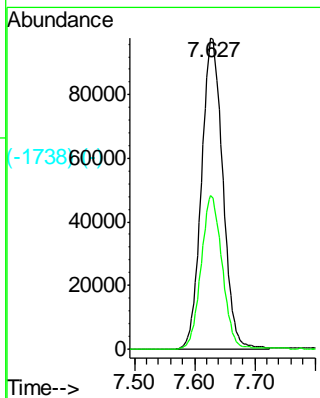
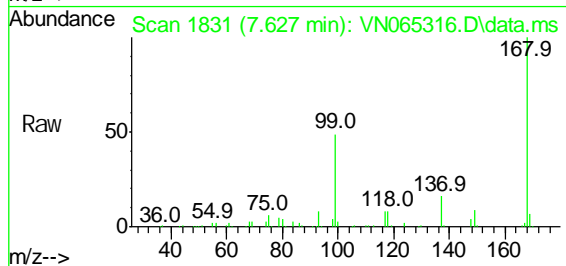




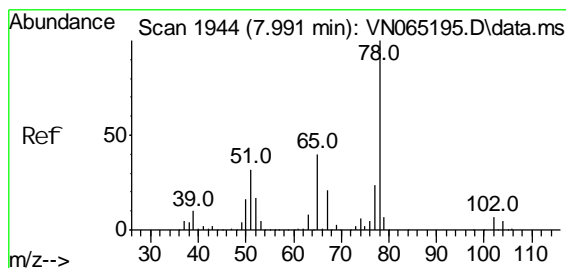
(-1812) (-)  
 Pentafluorobenzene  
 Concen: 50.00 ug/l  
 RT: 7.627 min Scan# 1831  
 Delta R.T. 0.000 min  
 Lab File: VN065316.D  
 Acq: 30 Dec 2020 13:28

Instrument :  
 MSVOA\_N  
 Client Sampled :  
 DRUM-COMP-1

Tgt Ion: 168 Resp: 235956  
 Ion Ratio Lower Upper  
 168 100  
 99 49.3 43.0 64.4

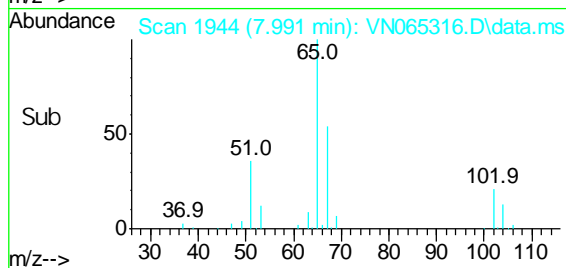
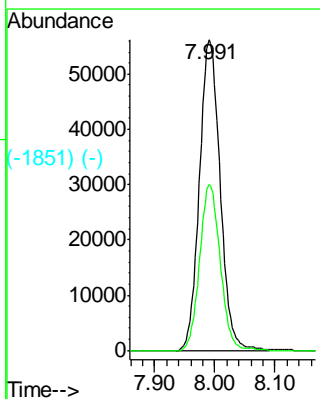
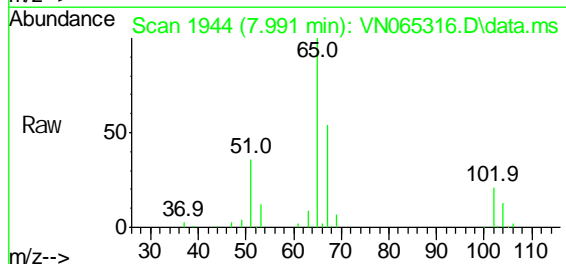


(-1738) (-)  
 1,2-Dichloroethane-d4  
 Concen: 49.67 ug/l  
 RT: 7.991 min Scan# 1944  
 Delta R.T. -0.000 min  
 Lab File: VN065316.D  
 Acq: 30 Dec 2020 13:28

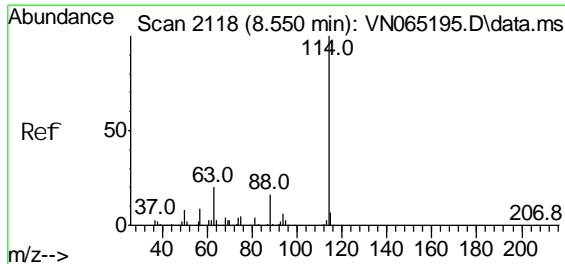


(-1826) (-)  
 1,2-Dichloroethane-d4  
 Concen: 49.67 ug/l  
 RT: 7.991 min Scan# 1944  
 Delta R.T. -0.000 min  
 Lab File: VN065316.D  
 Acq: 30 Dec 2020 13:28

Tgt Ion: 65 Resp: 132303  
 Ion Ratio Lower Upper  
 65 100  
 67 53.1 0.0 108.2



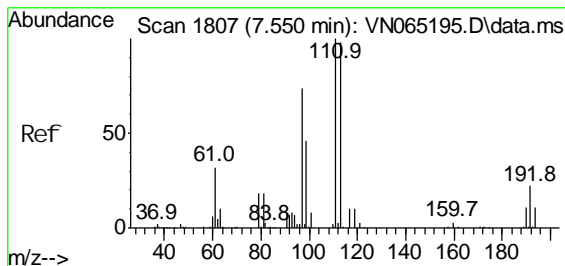
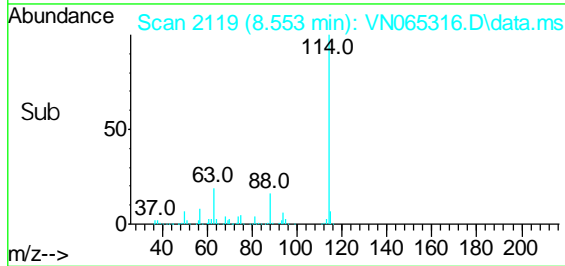
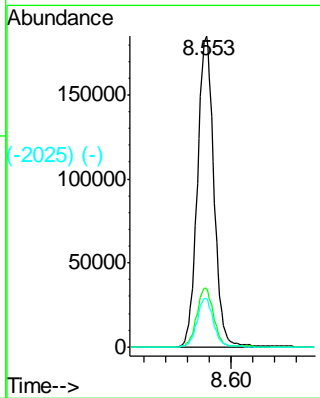
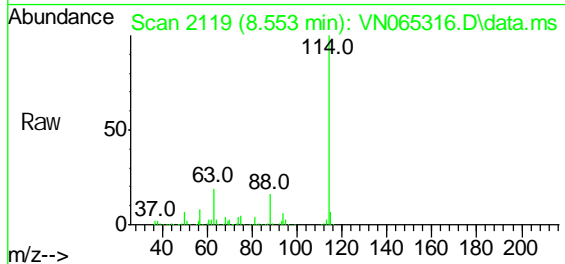
(-1851) (-)  
 1,2-Dichloroethane-d4  
 Concen: 49.67 ug/l  
 RT: 7.991 min Scan# 1944  
 Delta R.T. -0.000 min  
 Lab File: VN065316.D  
 Acq: 30 Dec 2020 13:28



#231 (-)  
 1,4-Difluorobenzene  
 Concen: 50.00 ug/l  
 RT: 8.553 min Scan# 2119  
 Delta R.T. 0.003 min  
 Lab File: VN065316.D  
 Acq: 30 Dec 2020 13:28

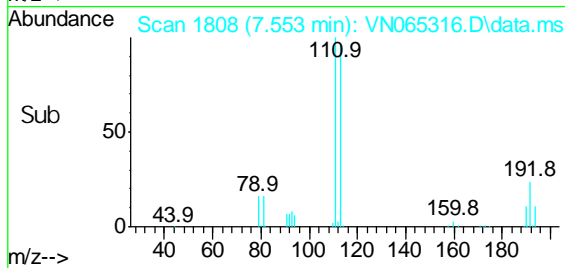
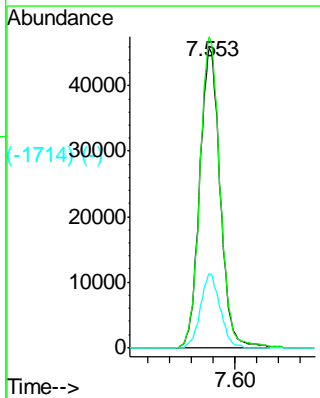
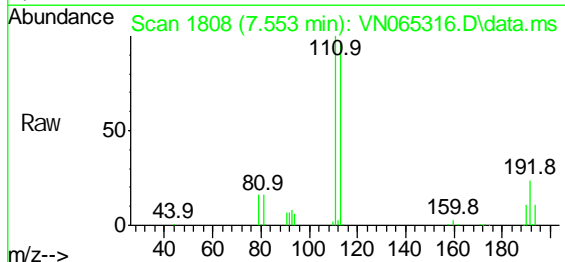
**Instrument :**  
 MSVOA\_N  
**Client Sampled :**  
 DRUM-COMP-1

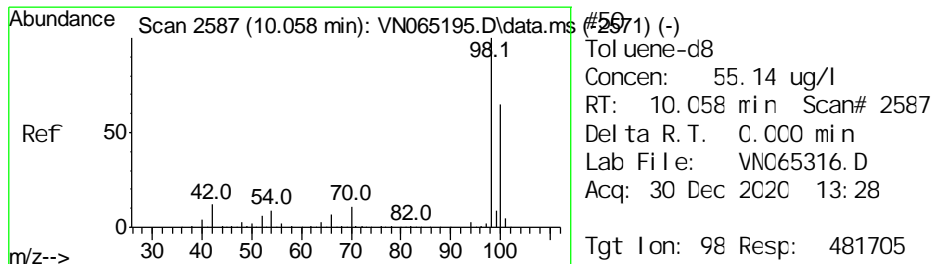
Tgt Ion: 114 Resp: 386383  
 Ion Ratio Lower Upper  
 114 100  
 63 18.9 0.0 38.6  
 88 15.5 0.0 32.6



#238 (-)  
 Dibromofluoromethane  
 Concen: 50.99 ug/l  
 RT: 7.553 min Scan# 1808  
 Delta R.T. 0.003 min  
 Lab File: VN065316.D  
 Acq: 30 Dec 2020 13:28

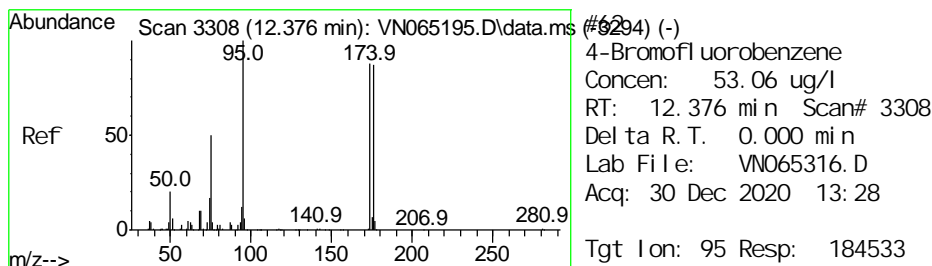
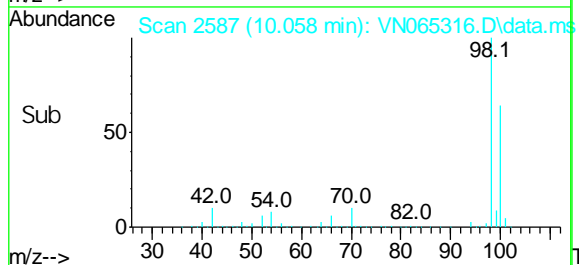
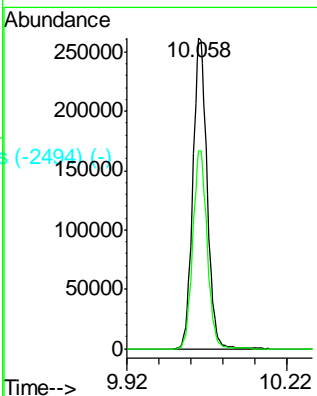
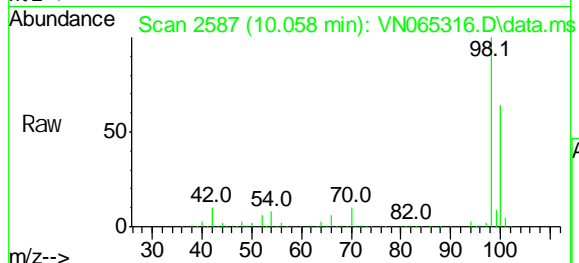
Tgt Ion: 113 Resp: 118857  
 Ion Ratio Lower Upper  
 113 100  
 111 102.4 81.6 122.4  
 192 23.5 16.2 24.2



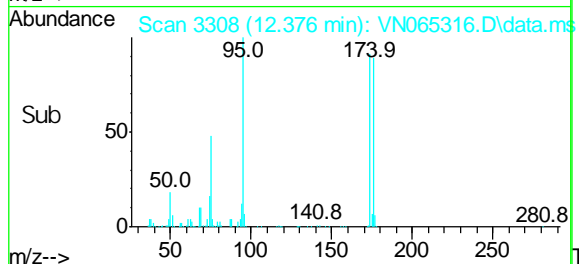
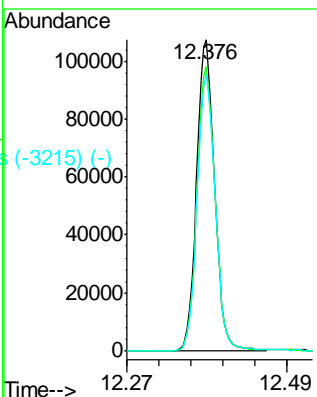
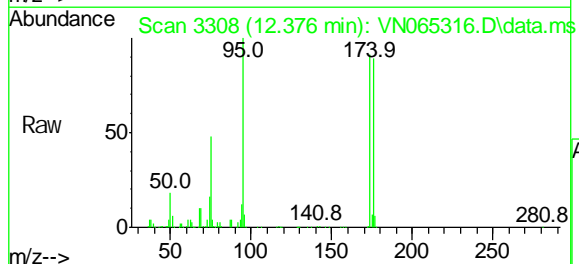


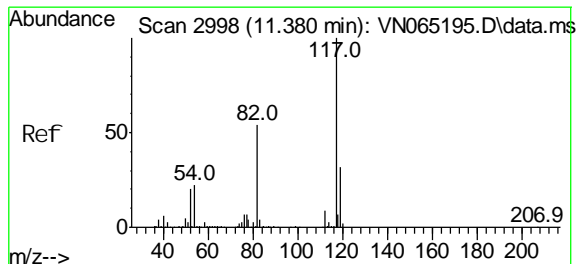
Instrument :  
 MSVOA\_N  
 ClientSampled :  
 DRUM-COMP-1

Tgt Ion: 98 Resp: 481705  
 Ion Ratio Lower Upper  
 98 100  
 100 64.6 51.7 77.5



Tgt Ion: 95 Resp: 184533  
 Ion Ratio Lower Upper  
 95 100  
 174 92.2 0.0 160.4  
 176 89.9 0.0 158.4

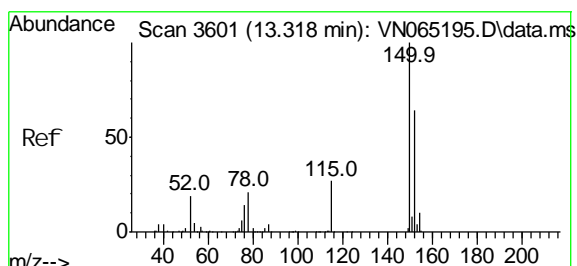
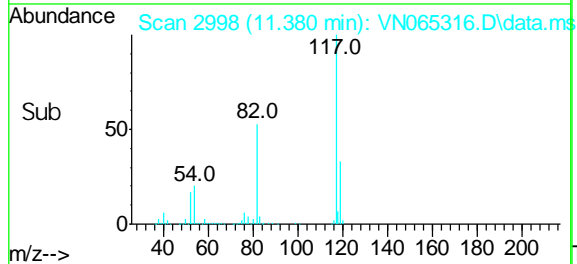
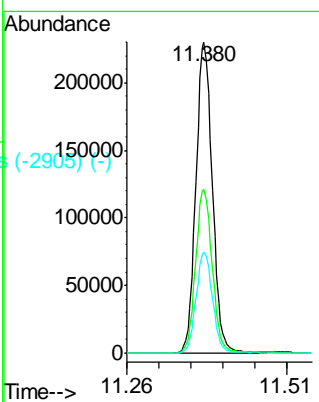
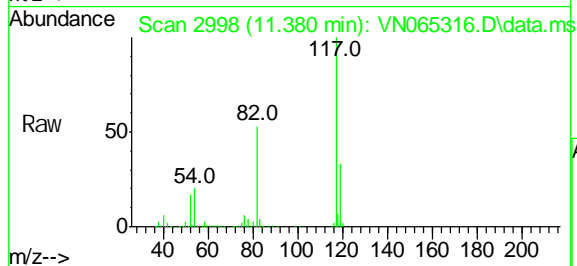




#2983 (-)  
 Chl orobenzene-d5  
 Concen: 50.00 ug/l  
 RT: 11.380 min Scan# 2998  
 Del ta R.T. -0.000 min  
 Lab File: VN065316.D  
 Acq: 30 Dec 2020 13:28

**Instrument :**  
 MSVOA\_N  
**Client Sampled :**  
 DRUM-COMP-1

Tgt Ion: 117 Resp: 407407  
 Ion Ratio Lower Upper  
 117 100  
 82 52.6 44.2 66.2  
 119 32.6 25.8 38.6



#3587 (-)  
 1,4-Di chl orobenzene-d4  
 Concen: 50.00 ug/l  
 RT: 13.315 min Scan# 3600  
 Del ta R.T. -0.003 min  
 Lab File: VN065316.D  
 Acq: 30 Dec 2020 13:28

Tgt Ion: 152 Resp: 162522  
 Ion Ratio Lower Upper  
 152 100  
 115 55.5 29.7 89.1  
 150 157.0 0.0 350.6

