

Data Path : Z:\voasrv\HPCHEM1\MSVOA_N\Data\VN123021\
 Data File : VN070403.D
 Acq On : 30 Dec 2021 16:49
 Operator : JC/MD
 Sample : M5212-02
 Misc : 5.00mL/MSVOA_N/WATER
 ALS Vial : 17 Sample Multiplier: 1

Instrument :
 MSVOA_N
 ClientSampleId :
 MW-50DA

Integration Parameters: RTEINT.P

Integrator: RTE
 Smoothing : ON Filtering: 5
 Sampling : 1 Min Area: 3 % of largest Peak
 Start Thrs: 0.2 Max Peaks: 100
 Stop Thrs : 0 Peak Location: TOP

If leading or trailing edge < 100 prefer < Baseline drop else tangent >
 Peak separation: 5

Method : Z:\voasrv\HPCHEM1\MSVOA_N\methods\82N122721W.M
 Title : SW846 8260

Signal : TIC: VN070403.D\data.ms

peak #	R.T. min	first scan	max scan	last scan	PK TY	peak height	corr. area	corr. % max.	% of total
1	5.624	1329	1355	1388	rVB3	216342	775596	15.82%	2.985%
2	8.024	2226	2250	2261	rBV2	639251	1532854	31.26%	5.900%
3	8.088	2261	2274	2298	rVB2	1129664	2612667	53.28%	10.056%
4	8.440	2383	2405	2429	rBV	779662	1807479	36.86%	6.957%
5	8.968	2583	2602	2638	rBV	1768762	3711477	75.69%	14.285%
6	10.443	3134	3152	3184	rBV	2613091	4903808	100.00%	18.874%
7	10.644	3215	3227	3240	rVV2	132374	233471	4.76%	0.899%
8	10.717	3241	3254	3268	rVB	140898	245564	5.01%	0.945%
9	11.747	3619	3638	3669	rBV	2336049	4260642	86.88%	16.399%
10	12.734	3988	4006	4034	rBV	1722862	3080811	62.82%	11.858%
11	13.675	4341	4357	4387	rBV	1607811	2817390	57.45%	10.844%

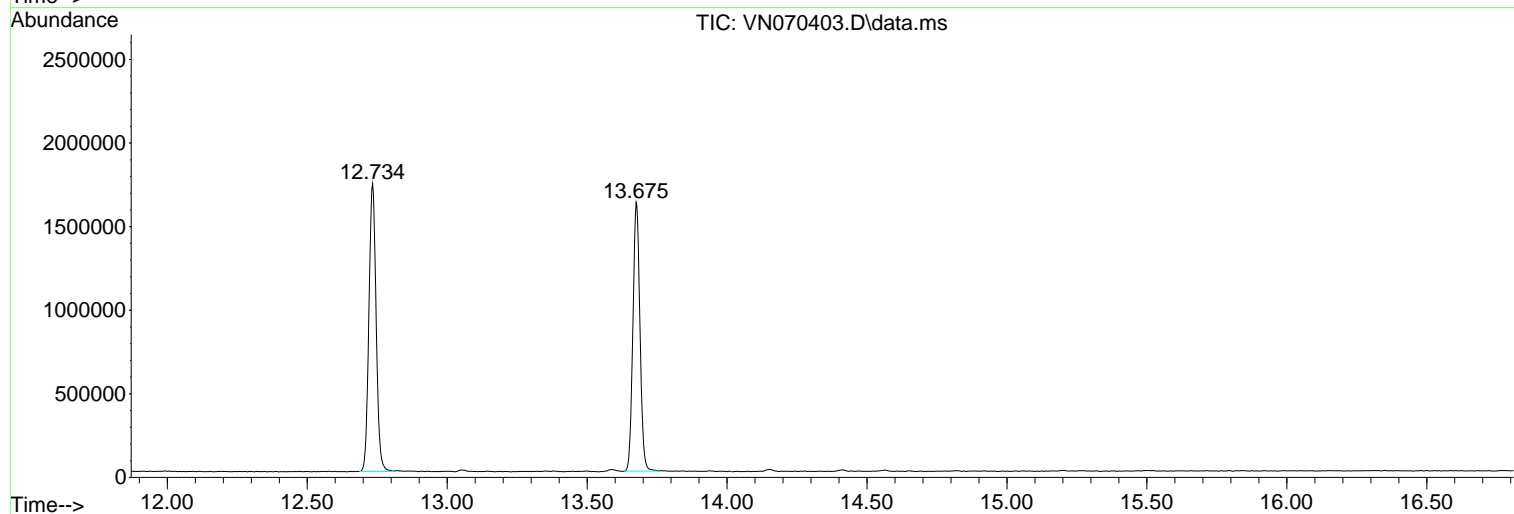
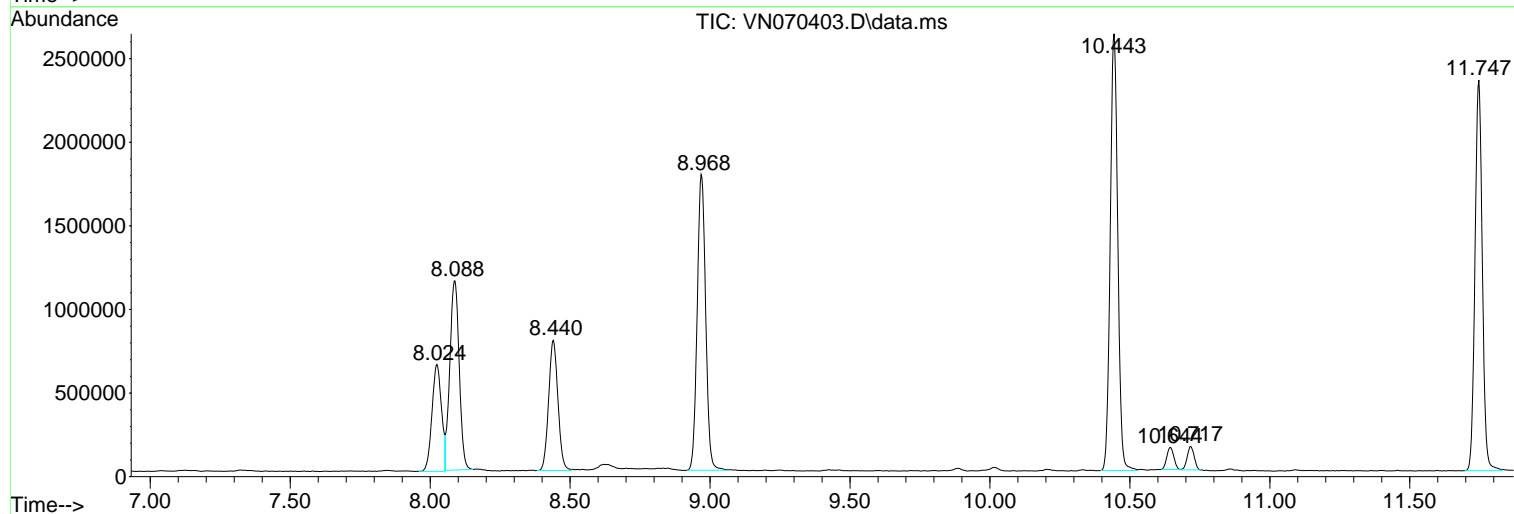
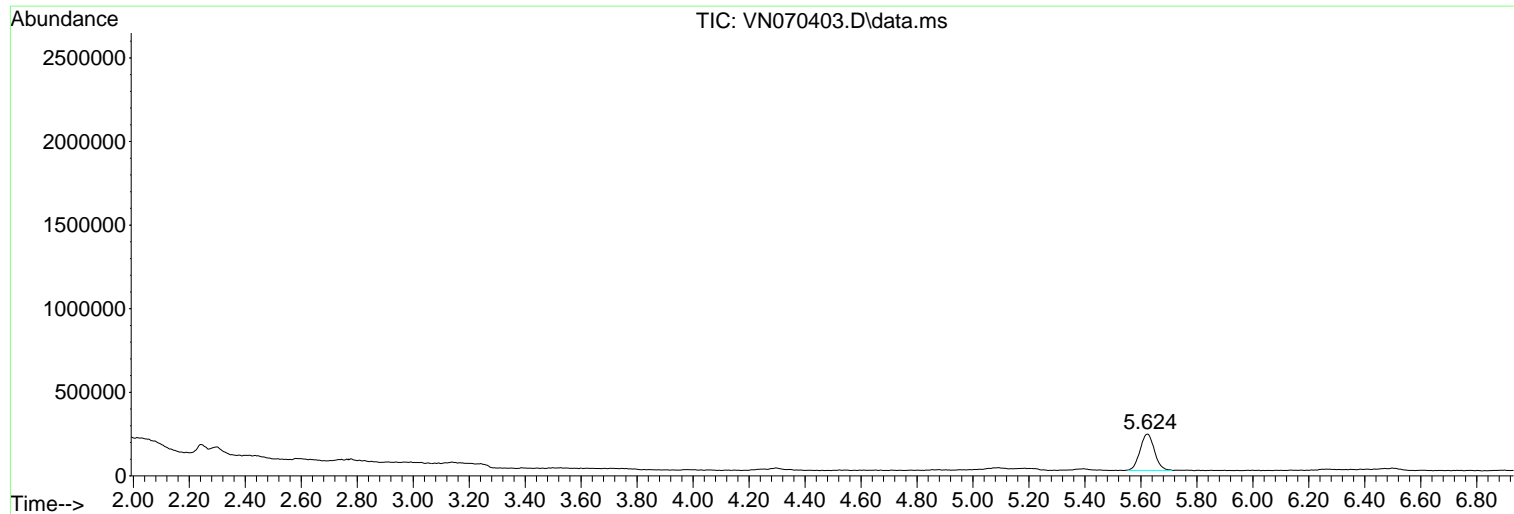
Sum of corrected areas: 25981759

Data Path : Z:\voasrv\HPCHEM1\MSVOA_N\Data\VN123021\
Data File : VN070403.D
Acq On : 30 Dec 2021 16:49
Operator : JC/MD
Sample : M5212-02
Misc : 5.00mL/MSVOA_N/WATER
ALS Vial : 17 Sample Multiplier: 1

Instrument :
MSVOA_N
ClientSampleId :
MW-50DA

Quant Method : Z:\voasrv\HPCHEM1\MSVOA_N\methods\82N122721W.M
Quant Title : SW846 8260

TIC Library : C:\Database\NIST0.L
TIC Integration Parameters: LSCINT.P



Library Search Compound Report

Data Path : Z:\voasrv\HPCHEM1\MSVOA_N\Data\VN123021\
Data File : VN070403.D
Acq On : 30 Dec 2021 16:49
Operator : JC/MD
Sample : M5212-02
Misc : 5.00mL/MSVOA_N/WATER
ALS Vial : 17 Sample Multiplier: 1

Instrument :
MSVOA_N
ClientSampleId :
MW-50DA

Quant Method : Z:\voasrv\HPCHEM1\MSVOA_N\methods\82N122721W.M
Quant Title : SW846 8260

TIC Library : C:\Database\NIST20.L
TIC Integration Parameters: LSCINT.P

No Library Search Compounds Detected

Data Path : Z:\voasrv\HPCHEM1\MSVOA_N\Data\VN123021\
Data File : VN070403.D
Acq On : 30 Dec 2021 16:49
Operator : JC/MD
Sample : M5212-02
Misc : 5.00mL/MSVOA_N/WATER
ALS Vial : 17 Sample Multiplier: 1

Instrument :
MSVOA_N
ClientSampleId :
MW-50DA

Quant Method : Z:\voasrv\HPCHEM1\MSVOA_N\methods\82N122721W.M
Quant Title : SW846 8260

TIC Library : C:\Database\NIST0.L
TIC Integration Parameters: LSCINT.P

TIC Top Hit name	RT	EstConc	Units	Response	--Internal Standard--		
					#	RT	Resp Conc
