

Data Path : Z:\voasrv\HPCHEM1\MSVOA_N\Data\VN032223\
 Data File : VN077103.D
 Acq On : 22 Mar 2023 13:17
 Operator : JC\MD
 Sample : 01975-02DL 4X
 Misc : 5.0mL/MSVOA_N/WATER
 ALS Vial : 1 Sample Multiplier: 1

Instrument :
 MSVOA_N
 ClientSampleId :
 CHAMBER-B-72-WESTDL

Quant Time: Mar 22 23:22:56 2023
 Quant Method : Z:\voasrv\HPCHEM1\MSVOA_N\methods\82N031723W.M
 Quant Title : SW846 8260
 QLast Update : Mon Mar 20 08:50:30 2023
 Response via : Initial Calibration

Compound	R.T.	QIon	Response	Conc	Units	Dev(Min)
Internal Standards						
1) Pentafluorobenzene	8.231	168	365714	50.000	ug/l	0.00
34) 1,4-Difluorobenzene	9.107	114	657247	50.000	ug/l	0.00
63) Chlorobenzene-d5	11.872	117	572605	50.000	ug/l	0.00
72) 1,4-Dichlorobenzene-d4	13.795	152	213907	50.000	ug/l	0.00
System Monitoring Compounds						
33) 1,2-Dichloroethane-d4	8.584	65	286154	48.985	ug/l	0.00
Spiked Amount	50.000	Range	74 - 125	Recovery	=	97.980%
35) Dibromofluoromethane	8.172	113	213009	46.278	ug/l	0.00
Spiked Amount	50.000	Range	75 - 124	Recovery	=	92.560%
50) Toluene-d8	10.572	98	802819	48.828	ug/l	0.00
Spiked Amount	50.000	Range	86 - 113	Recovery	=	97.660%
62) 4-Bromofluorobenzene	12.854	95	255772	44.023	ug/l	0.00
Spiked Amount	50.000	Range	83 - 123	Recovery	=	88.040%
Target Compounds						
						Qvalue
5) Bromomethane	2.984	94	1357	0.505	ug/l #	75
10) Methyl Iodide	4.607	142	1612	0.295	ug/l #	83
13) Acrolein	4.196	56	248	0.236	ug/l #	1
15) Acrylonitrile	5.731	53	1020	0.356	ug/l #	68
16) Acetone	4.449	43	31930	12.267	ug/l	98
17) Carbon Disulfide	4.719	76	4244	0.328	ug/l #	83
18) Methyl Acetate	5.048	43	3089	0.315	ug/l #	78
20) Methylene Chloride	5.301	84	5025	0.890	ug/l #	93
25) 2-Butanone	7.495	43	11815	3.103	ug/l #	86
29) Tetrahydrofuran	7.854	42	839	0.340	ug/l #	35
31) Cyclohexane	8.231	56	9765	1.022	ug/l #	1
36) 1,1-Dichloropropene	8.231	75	34024	4.733	ug/l #	52
37) Ethyl Acetate	7.578	43	19741	2.566	ug/l	98
38) Carbon Tetrachloride	8.231	117	42696	6.097	ug/l #	15
43) Isopropyl Acetate	8.695	43	71556	5.955	ug/l #	92
48) Methyl methacrylate	9.672	41	2454	0.427	ug/l #	45
51) 4-Methyl-2-Pentanone	10.454	43	7252	0.969	ug/l #	61
52) Toluene	10.630	92	531459	40.825	ug/l	98
54) cis-1,3-Dichloropropene	10.360	75	22229	2.624	ug/l #	69
59) 2-Hexanone	11.172	43	99098	18.259	ug/l #	24
65) Chlorobenzene	11.895	112	6324	0.480	ug/l #	88
74) N-amyl acetate	12.501	43	2355	0.284	ug/l #	73
76) 1,2,3-Trichloropropane	12.854	75	142792	25.807	ug/l #	1
77) Bromobenzene	12.983	156	976	0.227	ug/l	73
81) trans-1,4-Dichloro-2-b...	12.854	75	142792	71.036	ug/l #	10
82) 4-Chlorotoluene	13.236	91	2908	0.217	ug/l	92
87) 1,3-Dichlorobenzene	13.736	146	2405	0.296	ug/l	95
88) 1,4-Dichlorobenzene	13.736	146	2405	0.298	ug/l	95
89) n-Butylbenzene	14.066	91	2819	0.209	ug/l	98
91) 1,2-Dichlorobenzene	14.113	146	2009	0.248	ug/l	96
93) 1,2,4-Trichlorobenzene	15.395	180	2476	0.677	ug/l	90
95) Naphthalene	15.648	128	9095	2.527	ug/l	99
96) 1,2,3-Trichlorobenzene	15.848	180	2429	0.662	ug/l	96

(#) = qualifier out of range (m) = manual integration (+) = signals summed

Instrument :

MSVOA_N

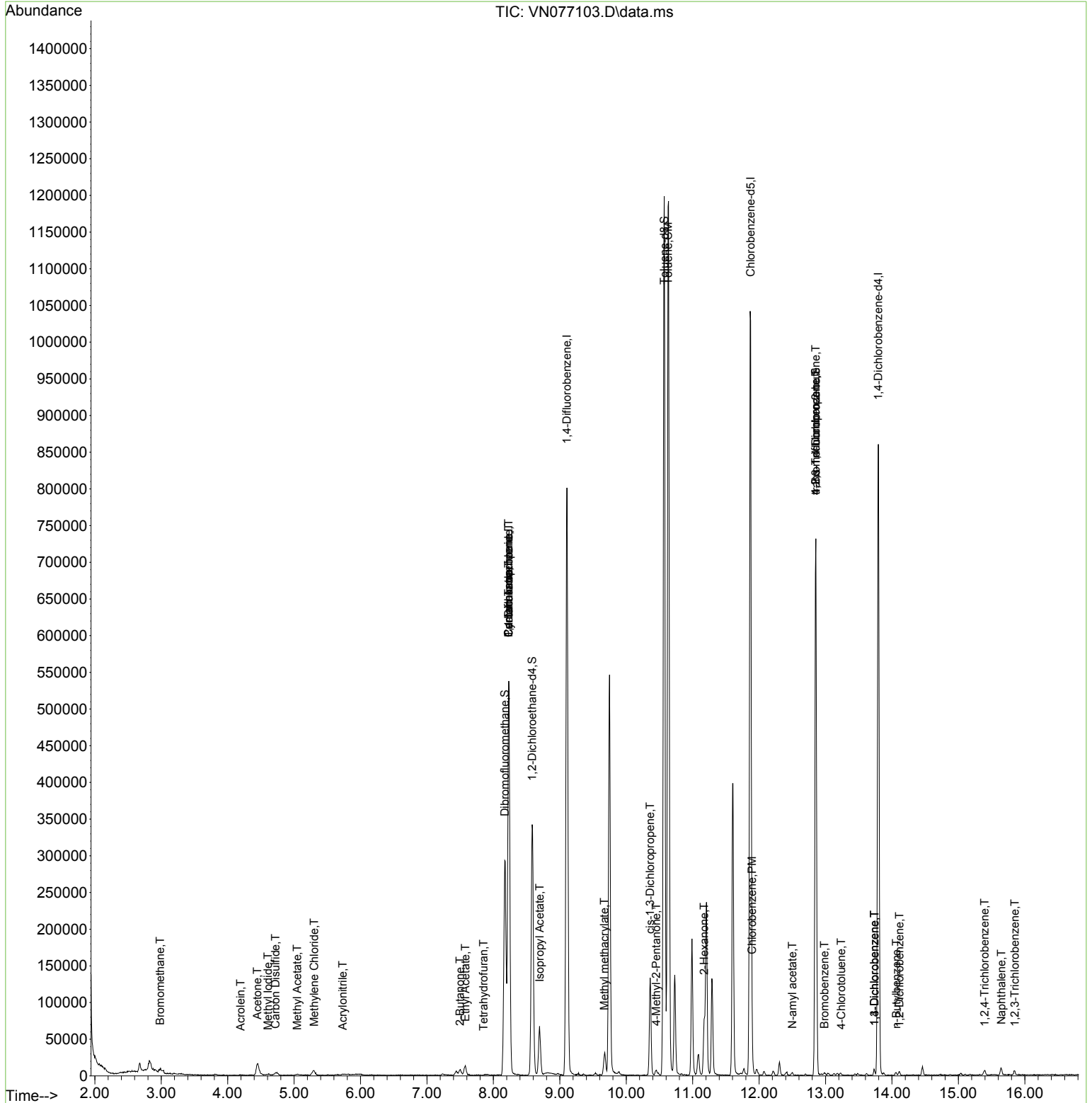
ClientSampleId :

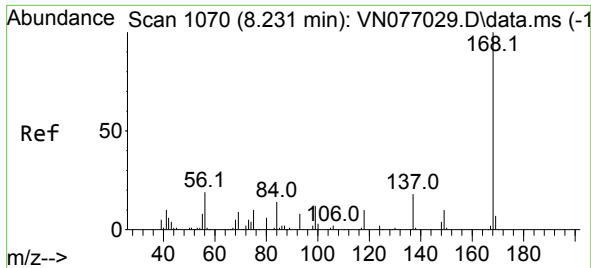
CHAMBER-B-72-WESTDL

Data Path : Z:\voasrv\HPCHEM1\MSVOA_N\Data\VN032223\
 Data File : VN077103.D
 Acq On : 22 Mar 2023 13:17
 Operator : JC\MD
 Sample : 01975-02DL 4X
 Misc : 5.0mL/MSVOA_N/WATER
 ALS Vial : 1 Sample Multiplier: 1

Instrument :
 MSVOA_N
 ClientSampleId :
 CHAMBER-B-72-WESTDL

Quant Time: Mar 22 23:22:56 2023
 Quant Method : Z:\voasrv\HPCHEM1\MSVOA_N\methods\82N031723W.M
 Quant Title : SW846 8260
 QLast Update : Mon Mar 20 08:50:30 2023
 Response via : Initial Calibration

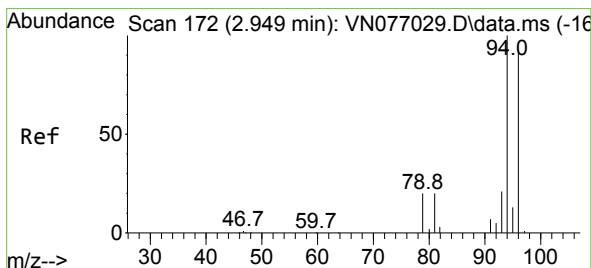
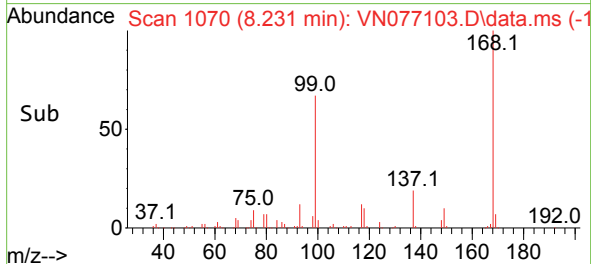
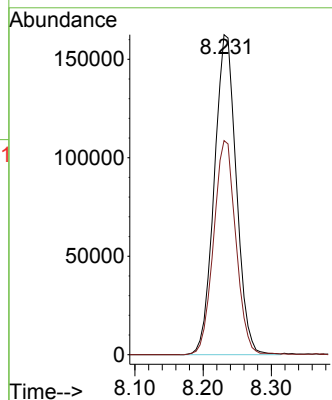
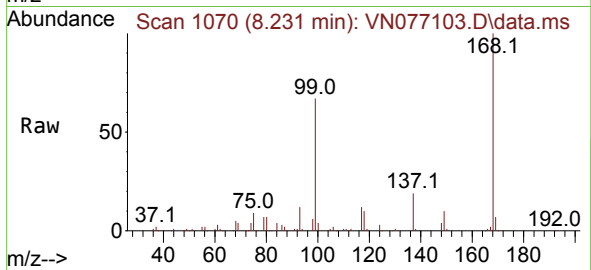




#1
 Pentafluorobenzene
 Concen: 50.000 ug/l
 RT: 8.231 min Scan# 10
 Delta R.T. -0.000 min
 Lab File: VN077103.D
 Acq: 22 Mar 2023 13:17

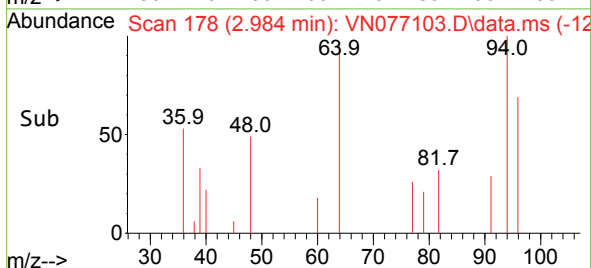
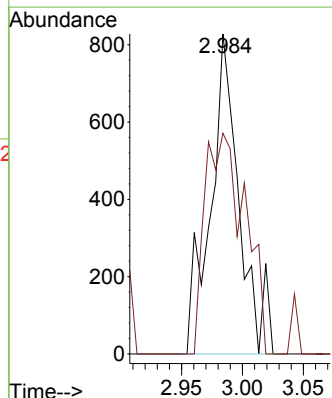
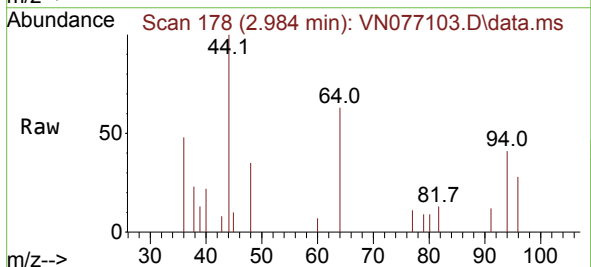
Instrument :
 MSVOA_N
 ClientSampleId :
 CHAMBER-B-72-WESTDL

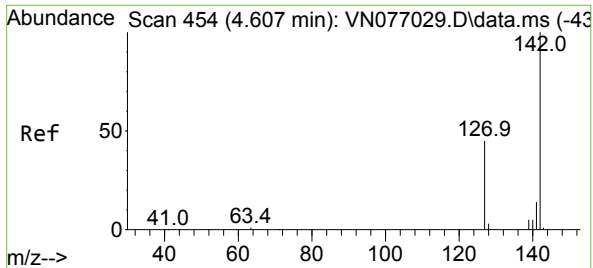
Tgt Ion:168 Resp: 365714
 Ion Ratio Lower Upper
 168 100
 99 66.9 53.9 80.9



#5
 Bromomethane
 Concen: 0.505 ug/l
 RT: 2.984 min Scan# 178
 Delta R.T. 0.035 min
 Lab File: VN077103.D
 Acq: 22 Mar 2023 13:17

Tgt Ion: 94 Resp: 1357
 Ion Ratio Lower Upper
 94 100
 96 69.0 74.1 111.1#



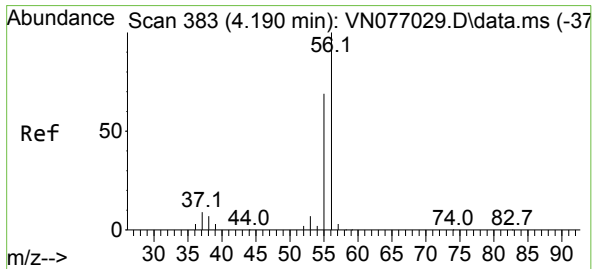
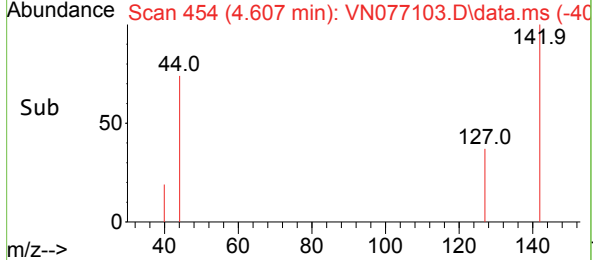
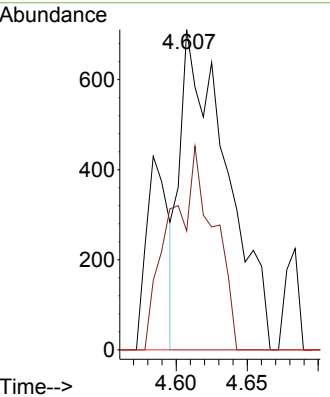
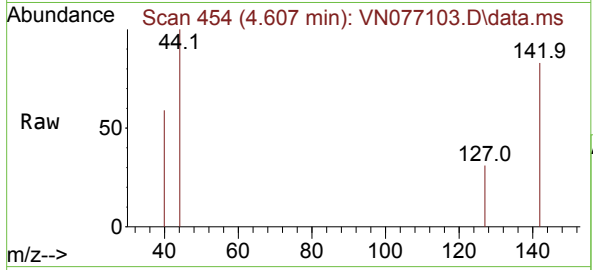


#10
 Methyl Iodide
 Concen: 0.295 ug/l
 RT: 4.607 min Scan# 41
 Delta R.T. 0.000 min
 Lab File: VN077103.D
 Acq: 22 Mar 2023 13:17

Instrument :
 MSVOA_N
 ClientSampleId :
 CHAMBER-B-72-WESTDL

Tgt Ion:142 Resp: 1612

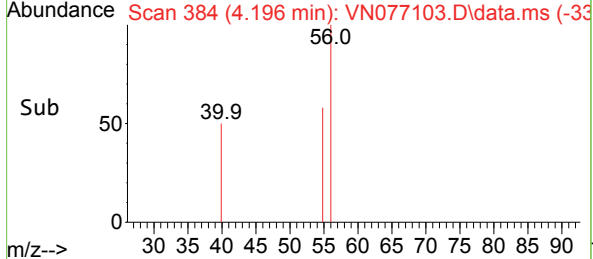
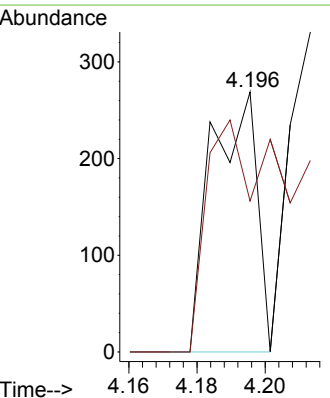
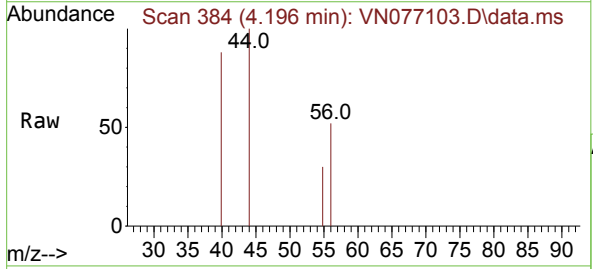
Ion	Ratio	Lower	Upper
142	100		
127	37.1	36.1	54.1
141	0.0	10.8	16.2#

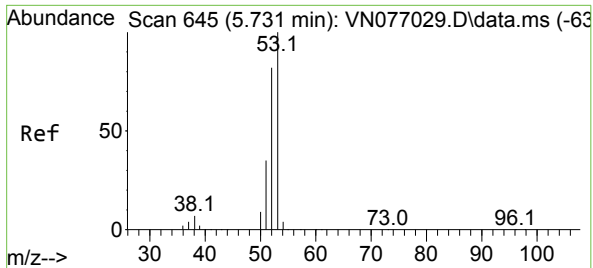


#13
 Acrolein
 Concen: 0.236 ug/l
 RT: 4.196 min Scan# 384
 Delta R.T. 0.006 min
 Lab File: VN077103.D
 Acq: 22 Mar 2023 13:17

Tgt Ion: 56 Resp: 248

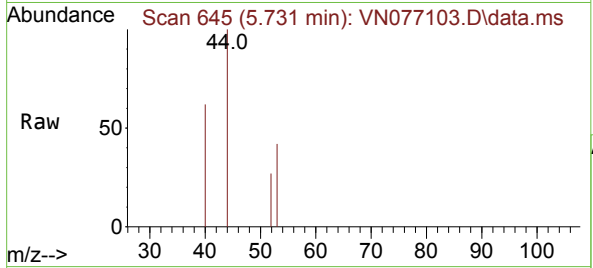
Ion	Ratio	Lower	Upper
56	100		
55	189.5	57.0	85.6#



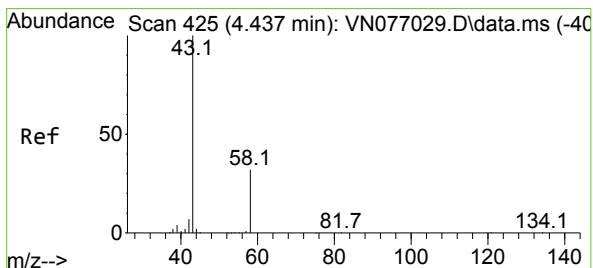
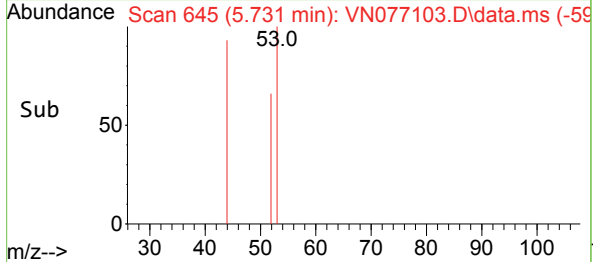
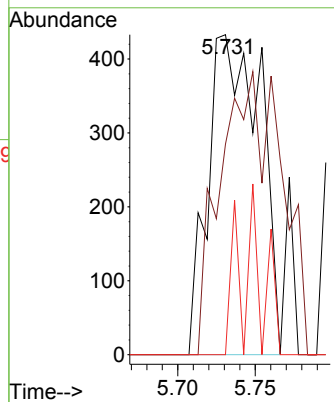


#15
 Acrylonitrile
 Concen: 0.356 ug/l
 RT: 5.731 min Scan# 645
 Delta R.T. -0.000 min
 Lab File: VN077103.D
 Acq: 22 Mar 2023 13:17

Instrument : MSVOA_N
 ClientSampleId : CHAMBER-B-72-WESTDL

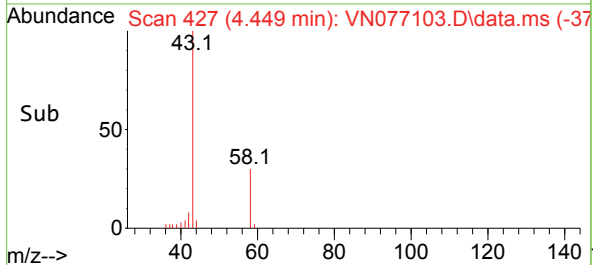
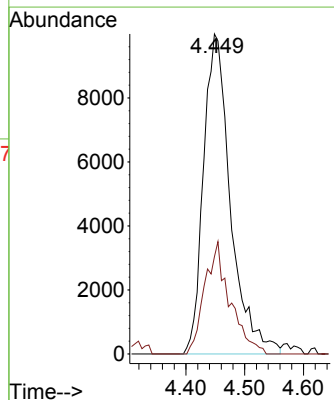
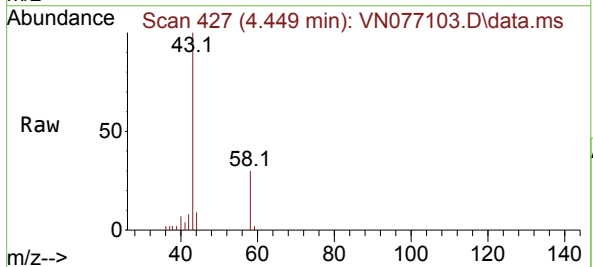


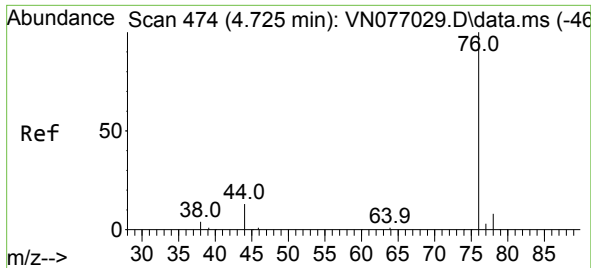
Tgt Ion: 53 Resp: 1020
 Ion Ratio Lower Upper
 53 100
 52 103.3 64.6 97.0#
 51 7.3 28.3 42.5#



#16
 Acetone
 Concen: 12.267 ug/l
 RT: 4.449 min Scan# 427
 Delta R.T. 0.011 min
 Lab File: VN077103.D
 Acq: 22 Mar 2023 13:17

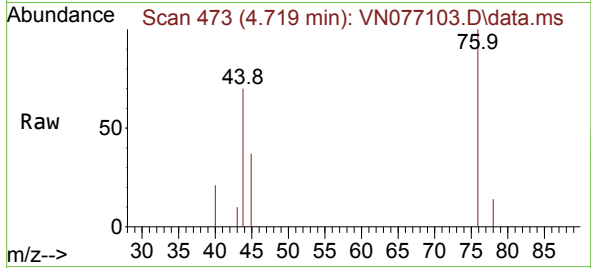
Tgt Ion: 43 Resp: 31930
 Ion Ratio Lower Upper
 43 100
 58 30.4 25.4 38.0



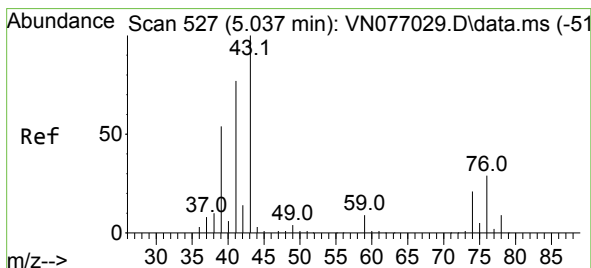
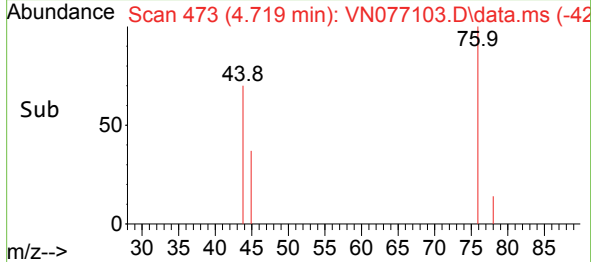
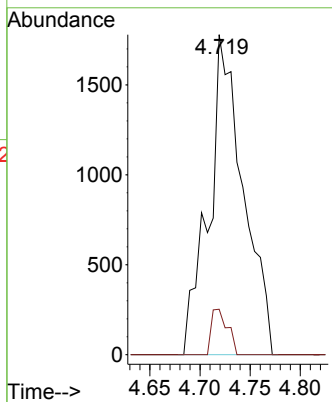


#17
 Carbon Disulfide
 Concen: 0.328 ug/l
 RT: 4.719 min Scan# 41
 Delta R.T. -0.006 min
 Lab File: VN077103.D
 Acq: 22 Mar 2023 13:17

Instrument : MSVOA_N
 ClientSampleId : CHAMBER-B-72-WESTDL

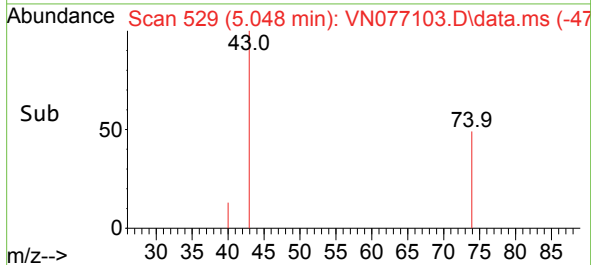
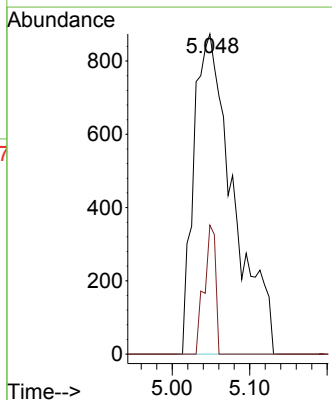
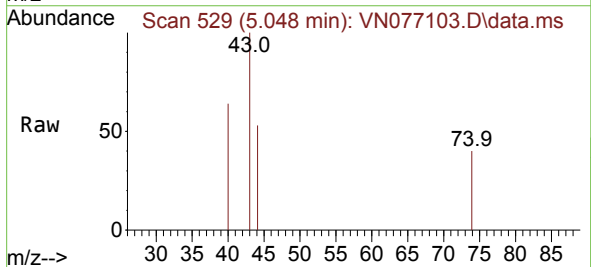


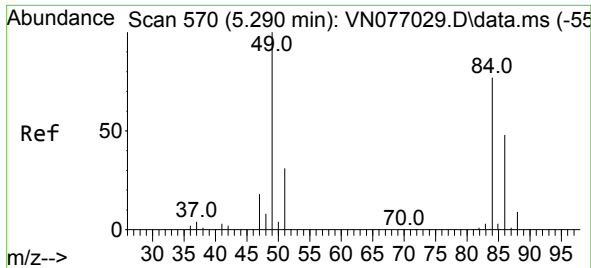
Tgt Ion: 76 Resp: 4244
 Ion Ratio Lower Upper
 76 100
 78 14.2 6.6 10.0#



#18
 Methyl Acetate
 Concen: 0.315 ug/l
 RT: 5.048 min Scan# 529
 Delta R.T. 0.011 min
 Lab File: VN077103.D
 Acq: 22 Mar 2023 13:17

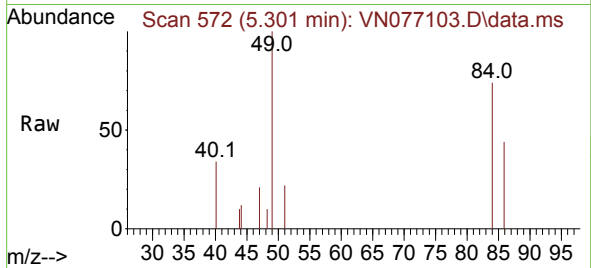
Tgt Ion: 43 Resp: 3089
 Ion Ratio Lower Upper
 43 100
 74 11.6 17.7 26.5#





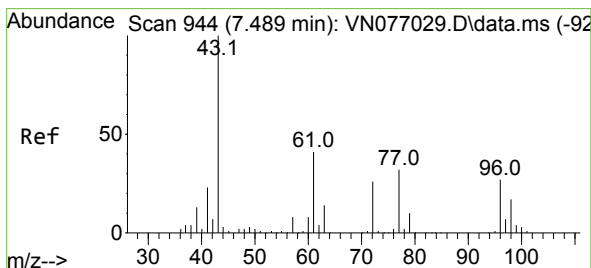
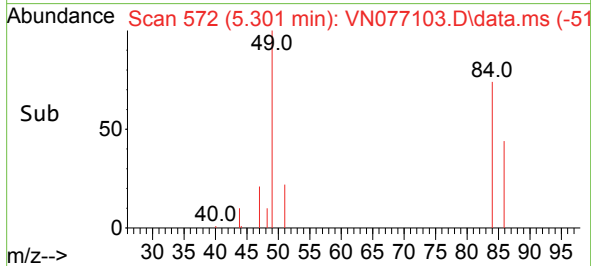
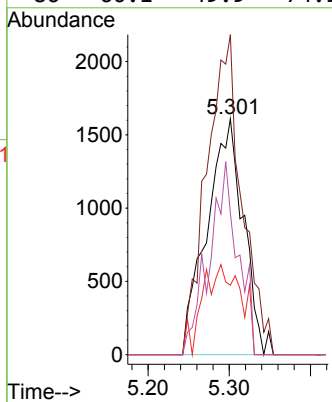
#20
 Methylene Chloride
 Concen: 0.890 ug/l
 RT: 5.301 min Scan# 51
 Delta R.T. 0.011 min
 Lab File: VN077103.D
 Acq: 22 Mar 2023 13:17

Instrument :
 MSVOA_N
 ClientSampleId :
 CHAMBER-B-72-WESTDL



Tgt Ion: 84 Resp: 5025

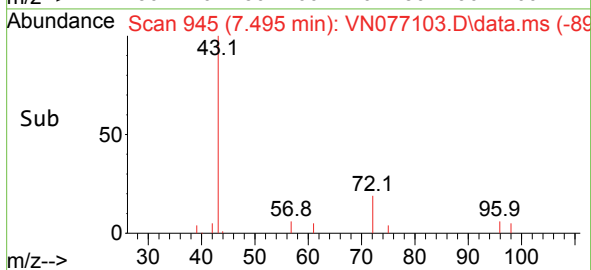
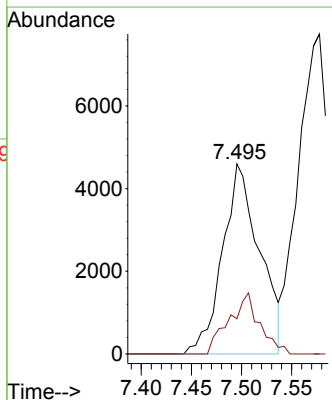
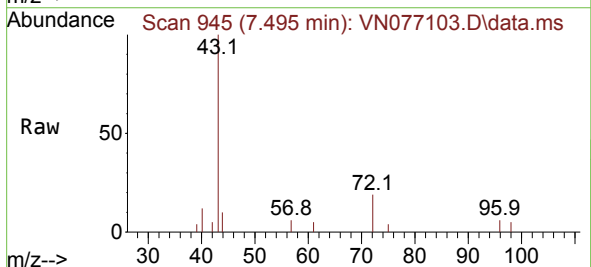
Ion	Ratio	Lower	Upper
84	100		
49	135.7	103.8	155.6
51	29.4	32.3	48.5#
86	60.1	49.9	74.9

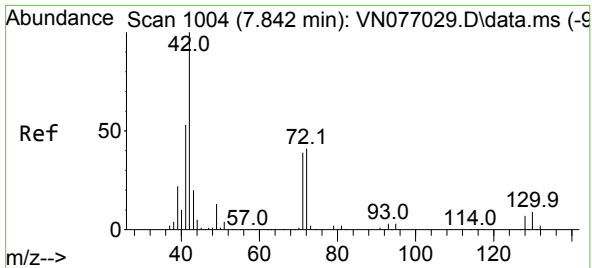


#25
 2-Butanone
 Concen: 3.103 ug/l
 RT: 7.495 min Scan# 945
 Delta R.T. 0.006 min
 Lab File: VN077103.D
 Acq: 22 Mar 2023 13:17

Tgt Ion: 43 Resp: 11815

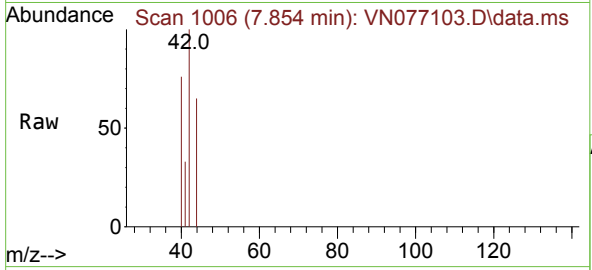
Ion	Ratio	Lower	Upper
43	100		
72	18.5	20.7	31.1#



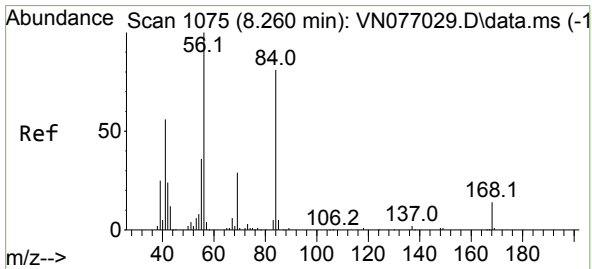
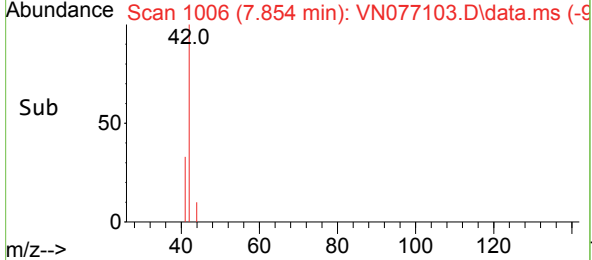
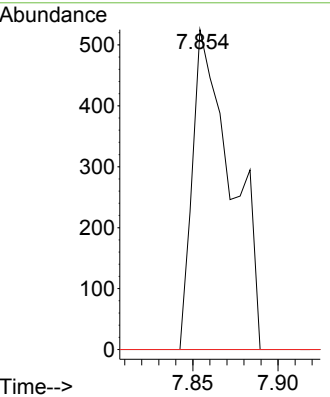


#29
 Tetrahydrofuran
 Concen: 0.340 ug/l
 RT: 7.854 min Scan# 1006
 Delta R.T. 0.012 min
 Lab File: VN077103.D
 Acq: 22 Mar 2023 13:17

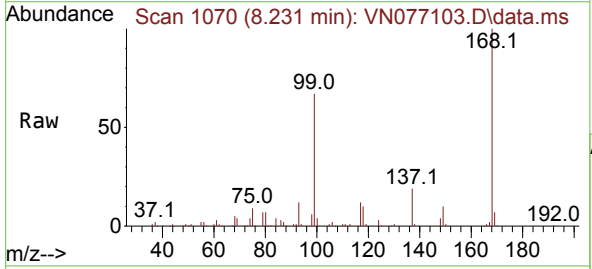
Instrument : MSVOA_N
 ClientSampleId : CHAMBER-B-72-WESTDL



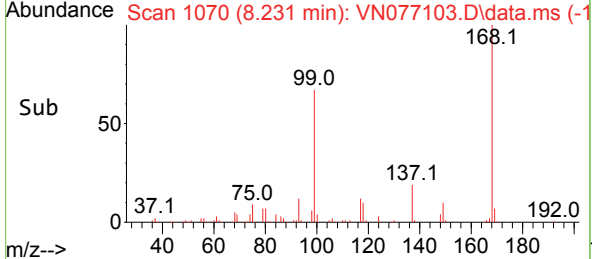
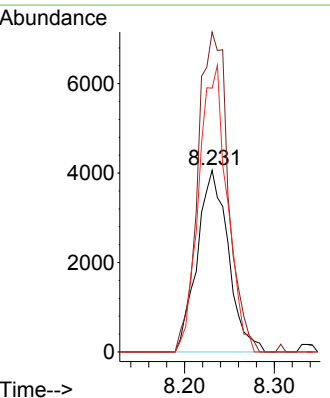
Tgt Ion	Resp	Lower	Upper
42	100		
72	0.0	33.2	49.8#
71	0.0	31.0	46.4#

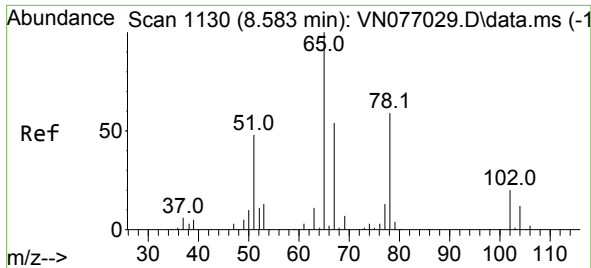


#31
 Cyclohexane
 Concen: 1.022 ug/l
 RT: 8.231 min Scan# 1070
 Delta R.T. -0.029 min
 Lab File: VN077103.D
 Acq: 22 Mar 2023 13:17



Tgt Ion	Resp	Lower	Upper
56	100		
69	176.2	22.8	34.2#
84	145.2	64.7	97.1#

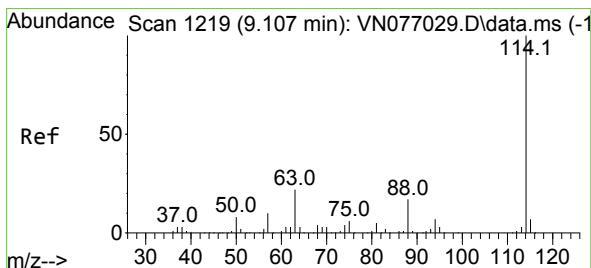
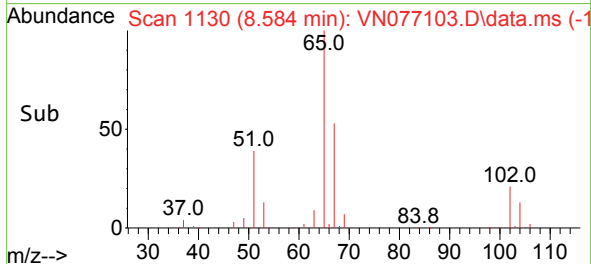
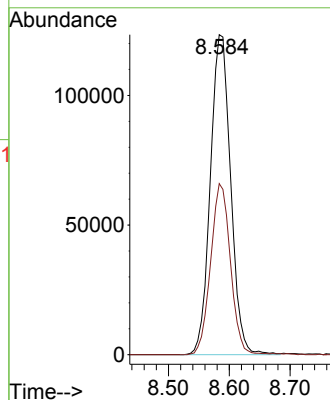
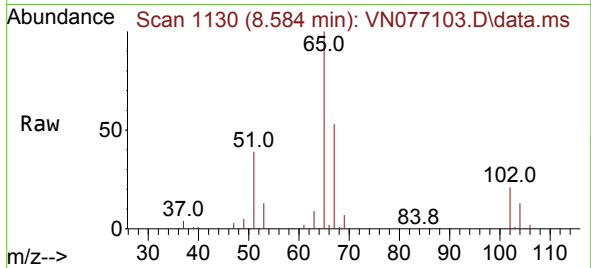




#33
 1,2-Dichloroethane-d4
 Concen: 48.985 ug/l
 RT: 8.584 min Scan# 1130
 Delta R.T. 0.001 min
 Lab File: VN077103.D
 Acq: 22 Mar 2023 13:17

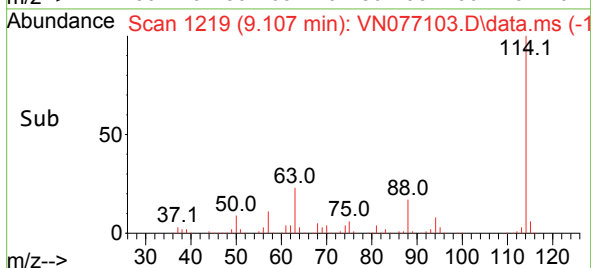
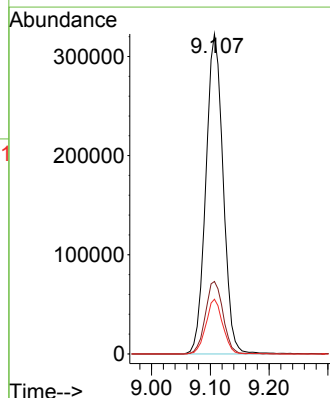
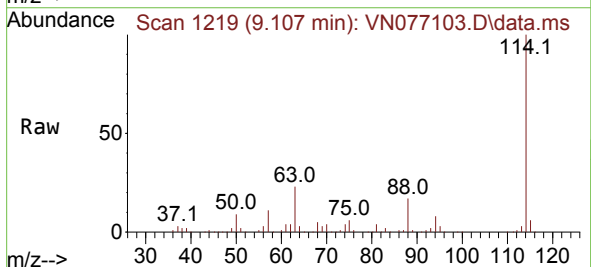
Instrument :
 MSVOA_N
 ClientSampleId :
 CHAMBER-B-72-WESTDL

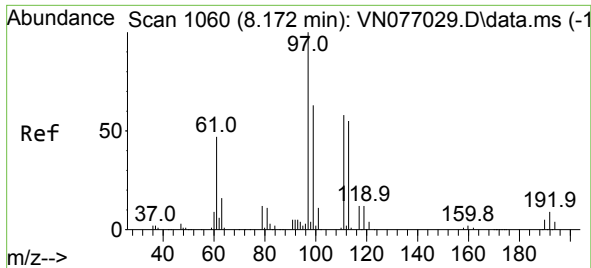
Tgt Ion: 65 Resp: 286154
 Ion Ratio Lower Upper
 65 100
 67 52.0 0.0 105.2



#34
 1,4-Difluorobenzene
 Concen: 50.000 ug/l
 RT: 9.107 min Scan# 1219
 Delta R.T. 0.000 min
 Lab File: VN077103.D
 Acq: 22 Mar 2023 13:17

Tgt Ion: 114 Resp: 657247
 Ion Ratio Lower Upper
 114 100
 63 22.7 0.0 44.6
 88 17.1 0.0 33.8



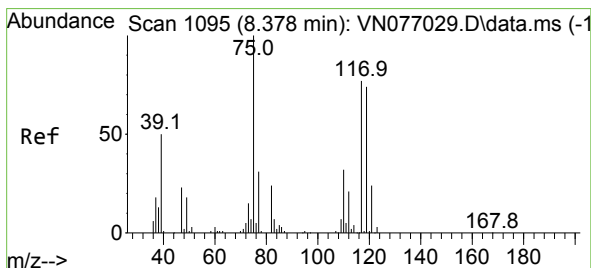
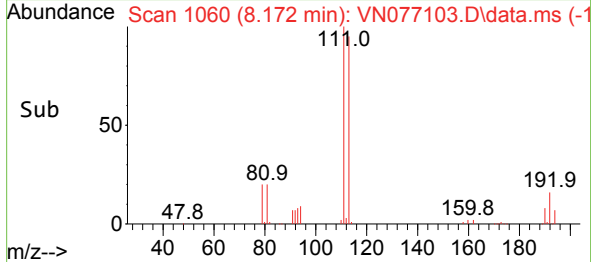
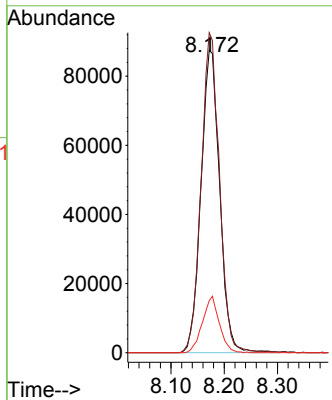
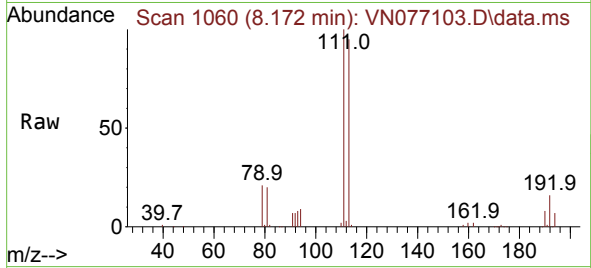


#35
 Dibromofluoromethane
 Concen: 46.278 ug/l
 RT: 8.172 min Scan# 1060
 Delta R.T. 0.000 min
 Lab File: VN077103.D
 Acq: 22 Mar 2023 13:17

Instrument : MSVOA_N
 ClientSampleId : CHAMBER-B-72-WESTDL

Tgt Ion:113 Resp: 213009

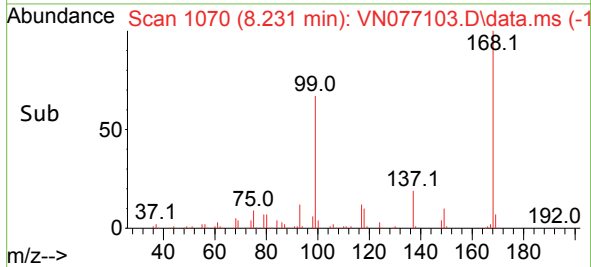
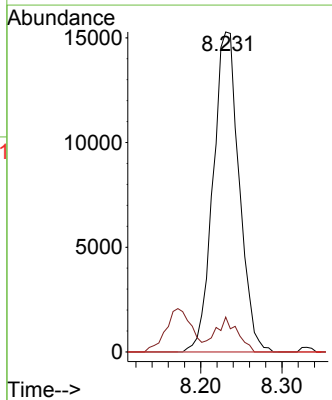
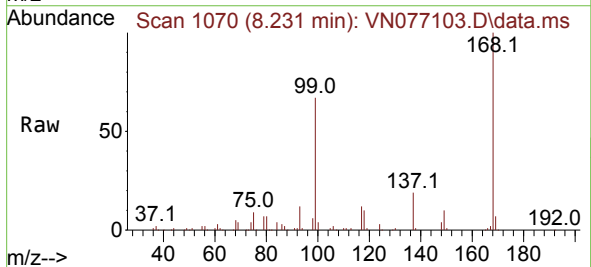
Ion	Ratio	Lower	Upper
113	100		
111	103.4	82.2	123.2
192	16.9	13.0	19.6

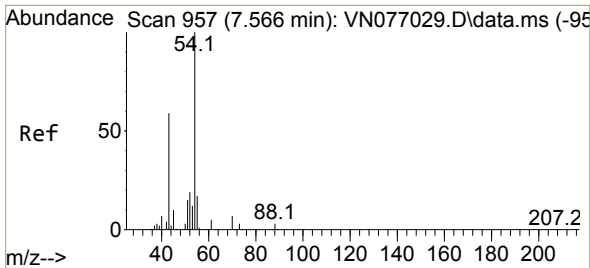


#36
 1,1-Dichloropropene
 Concen: 4.733 ug/l
 RT: 8.231 min Scan# 1070
 Delta R.T. -0.147 min
 Lab File: VN077103.D
 Acq: 22 Mar 2023 13:17

Tgt Ion: 75 Resp: 34024

Ion	Ratio	Lower	Upper
75	100		
110	9.3	15.9	47.7#
77	0.0	24.3	36.5#



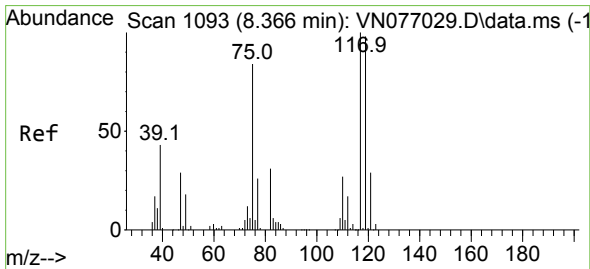
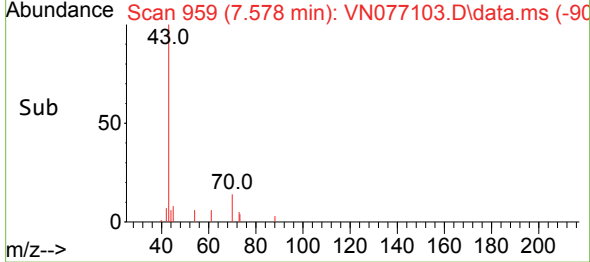
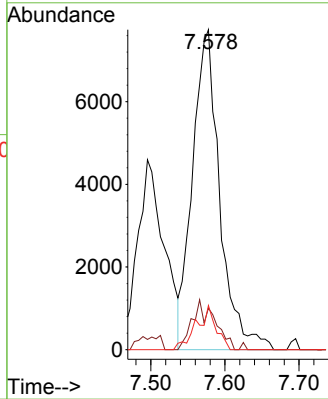
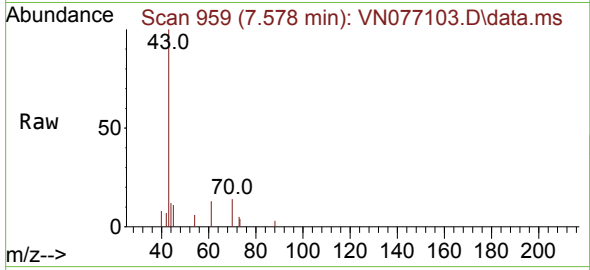


#37
 Ethyl Acetate
 Concen: 2.566 ug/l
 RT: 7.578 min Scan# 910
 Delta R.T. 0.012 min
 Lab File: VN077103.D
 Acq: 22 Mar 2023 13:17

Instrument : MSVOA_N
 ClientSampleId : CHAMBER-B-72-WESTDL

Tgt Ion: 43 Resp: 19741

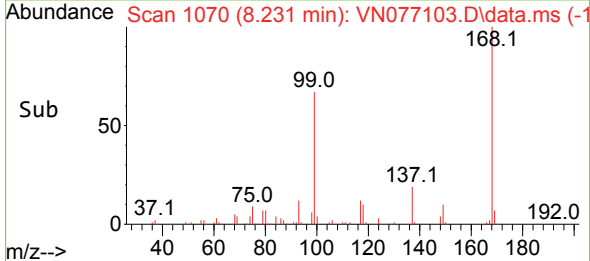
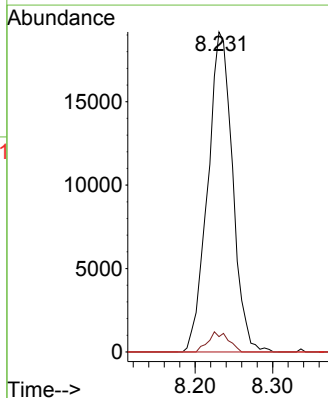
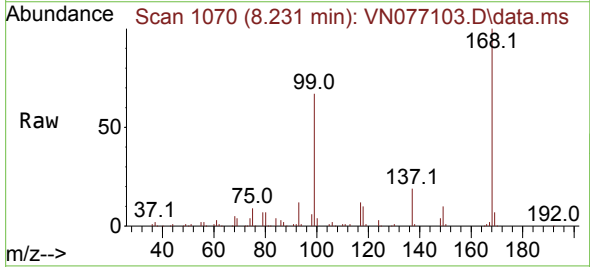
Ion	Ratio	Lower	Upper
43	100		
61	13.0	11.0	16.6
70	10.0	8.4	12.6

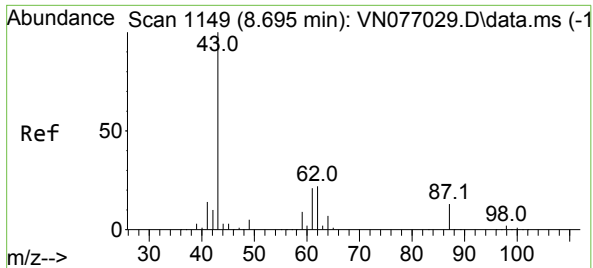


#38
 Carbon Tetrachloride
 Concen: 6.097 ug/l
 RT: 8.231 min Scan# 1070
 Delta R.T. -0.135 min
 Lab File: VN077103.D
 Acq: 22 Mar 2023 13:17

Tgt Ion: 117 Resp: 42696

Ion	Ratio	Lower	Upper
117	100		
119	4.8	78.2	117.2#
121	0.0	23.2	34.8#

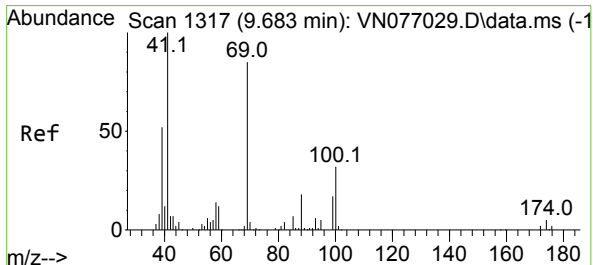
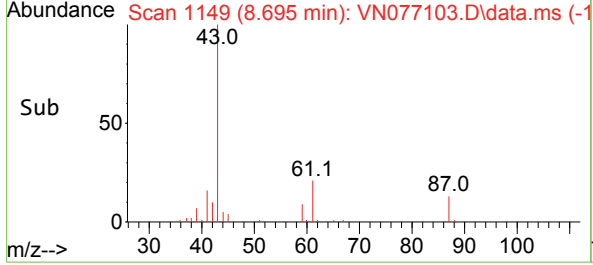
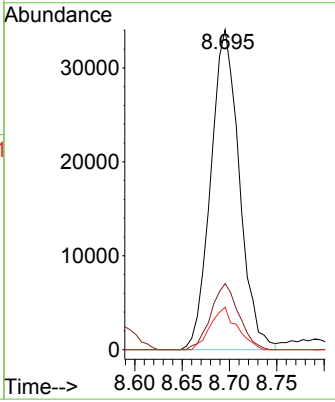
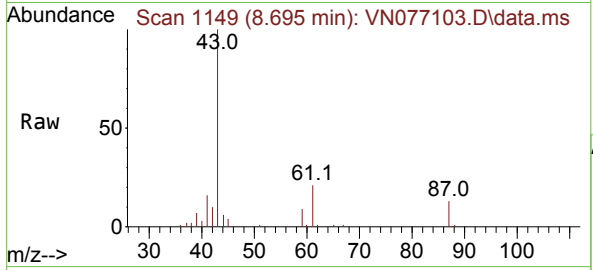




#43
 Isopropyl Acetate
 Concen: 5.955 ug/l
 RT: 8.695 min Scan# 1149
 Delta R.T. 0.000 min
 Lab File: VN077103.D
 Acq: 22 Mar 2023 13:17

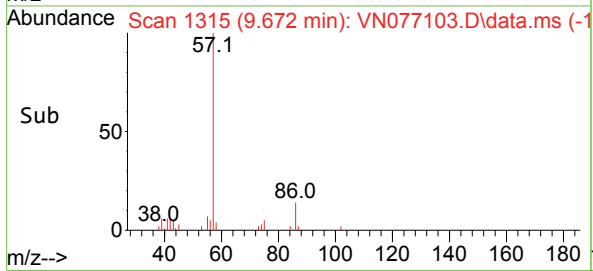
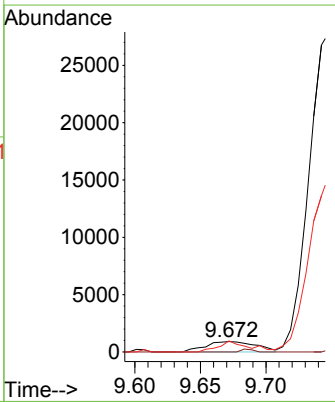
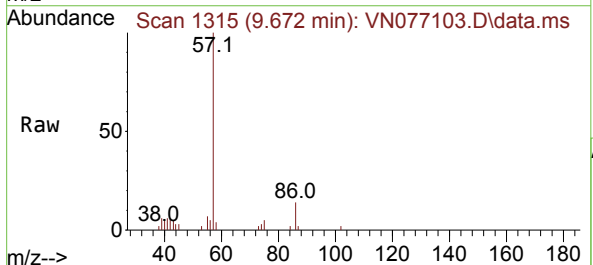
Instrument : MSVOA_N
 ClientSampleId : CHAMBER-B-72-WESTDL

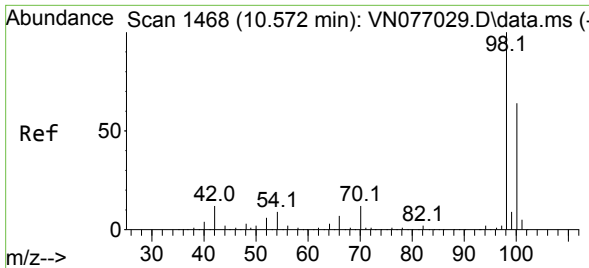
Tgt Ion	Resp	Lower	Upper
43	71556		
61	20.1	20.6	30.8#
87	12.3	10.0	15.0



#48
 Methyl methacrylate
 Concen: 0.427 ug/l
 RT: 9.672 min Scan# 1315
 Delta R.T. -0.012 min
 Lab File: VN077103.D
 Acq: 22 Mar 2023 13:17

Tgt Ion	Resp	Lower	Upper
41	2454		
69	6.1	64.3	96.5#
39	61.7	43.2	64.8

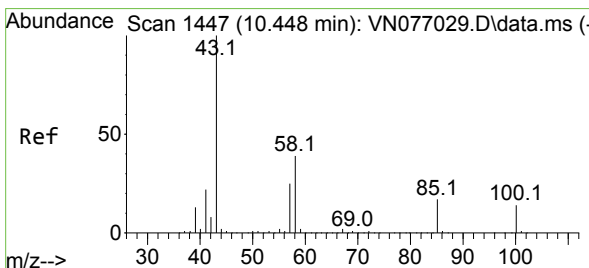
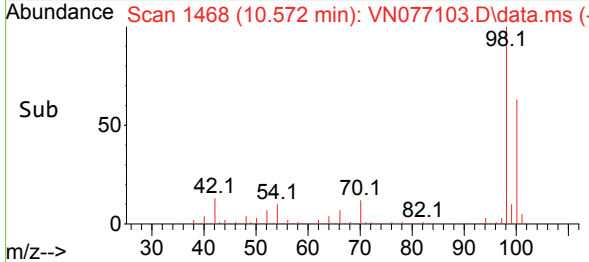
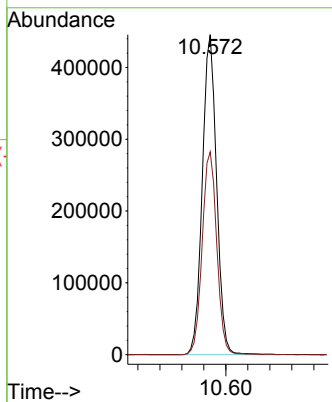
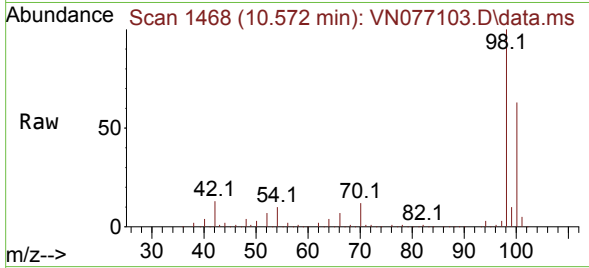




#50
 Toluene-d8
 Concen: 48.828 ug/l
 RT: 10.572 min Scan# 1468
 Delta R.T. 0.000 min
 Lab File: VN077103.D
 Acq: 22 Mar 2023 13:17

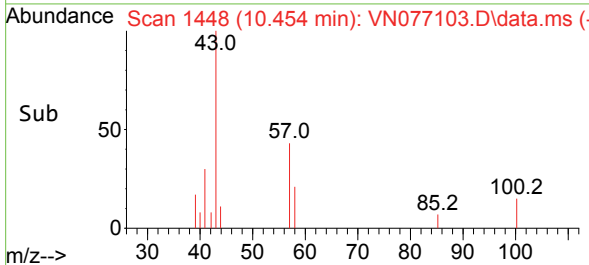
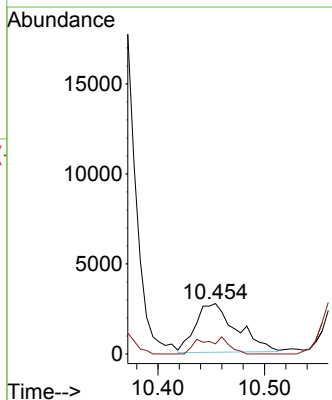
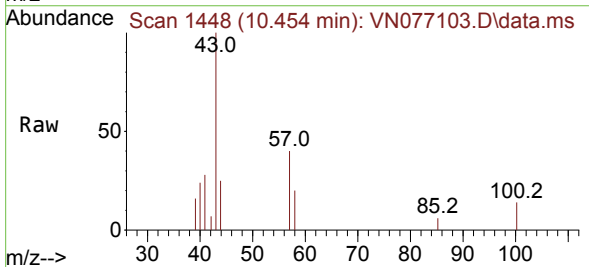
Instrument : MSVOA_N
 ClientSampleId : CHAMBER-B-72-WESTDL

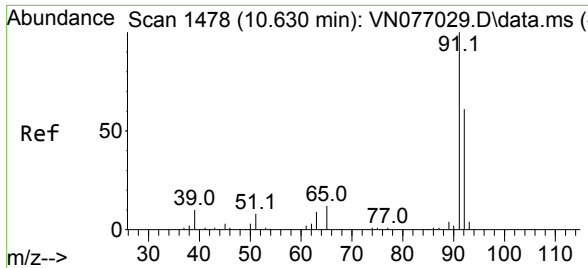
Tgt Ion: 98 Resp: 802819
 Ion Ratio Lower Upper
 98 100
 100 64.7 51.6 77.4



#51
 4-Methyl-2-Pentanone
 Concen: 0.969 ug/l
 RT: 10.454 min Scan# 1448
 Delta R.T. 0.006 min
 Lab File: VN077103.D
 Acq: 22 Mar 2023 13:17

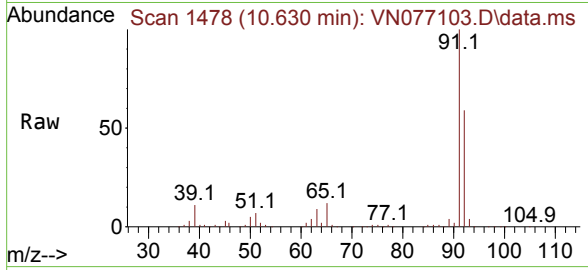
Tgt Ion: 43 Resp: 7252
 Ion Ratio Lower Upper
 43 100
 58 14.8 31.1 46.7#



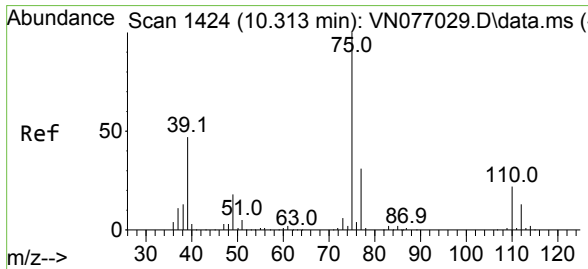
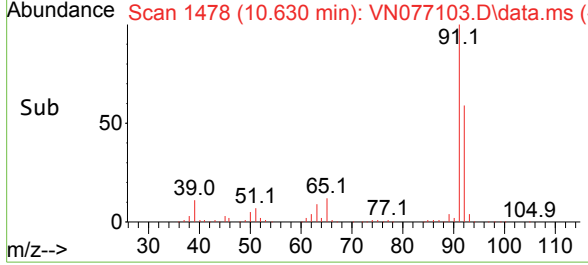
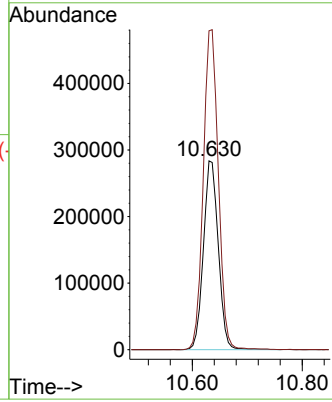


#52
 Toluene
 Concen: 40.825 ug/l
 RT: 10.630 min Scan# 1478
 Delta R.T. 0.000 min
 Lab File: VN077103.D
 Acq: 22 Mar 2023 13:17

Instrument : MSVOA_N
 ClientSampleId : CHAMBER-B-72-WESTDL

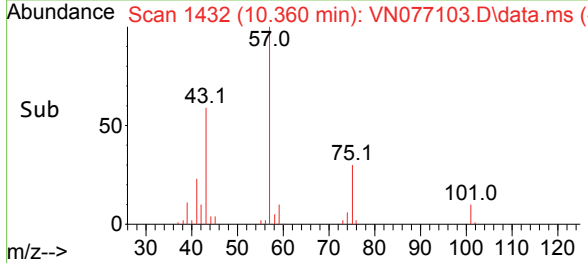
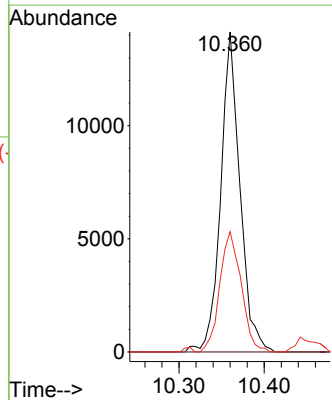
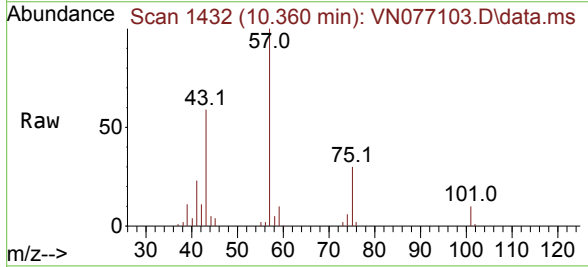


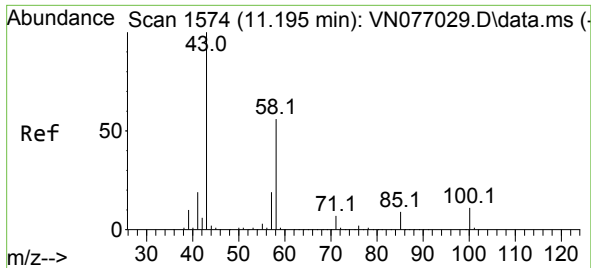
Tgt Ion: 92 Resp: 531459
 Ion Ratio Lower Upper
 92 100
 91 171.9 135.8 203.8



#54
 cis-1,3-Dichloropropene
 Concen: 2.624 ug/l
 RT: 10.360 min Scan# 1432
 Delta R.T. 0.047 min
 Lab File: VN077103.D
 Acq: 22 Mar 2023 13:17

Tgt Ion: 75 Resp: 22229
 Ion Ratio Lower Upper
 75 100
 77 0.0 24.5 36.7#
 39 37.6 37.8 56.6#

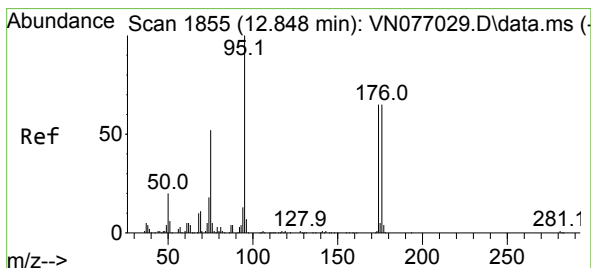
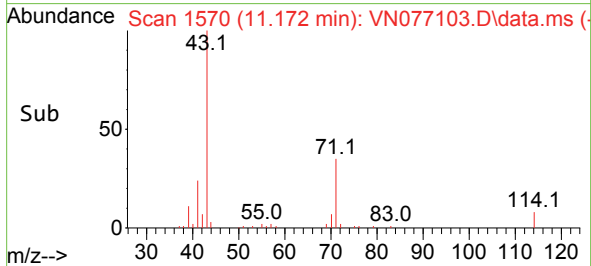
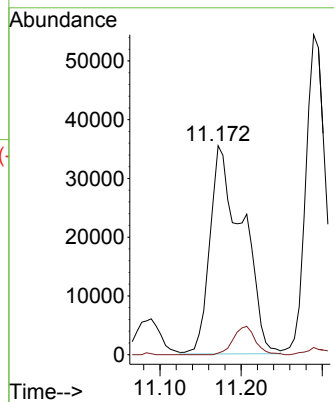
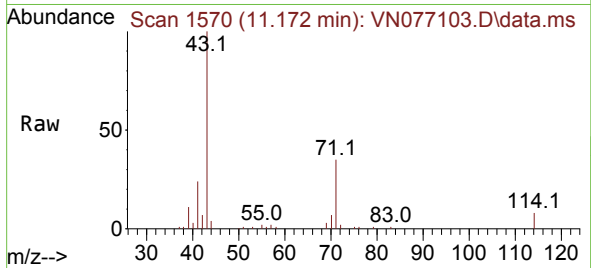




#59
 2-Hexanone
 Concen: 18.259 ug/l
 RT: 11.172 min Scan# 11170
 Delta R.T. -0.023 min
 Lab File: VN077103.D
 Acq: 22 Mar 2023 13:17

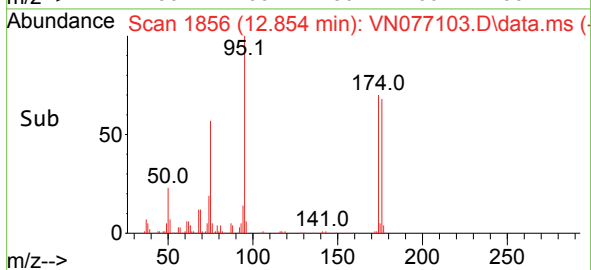
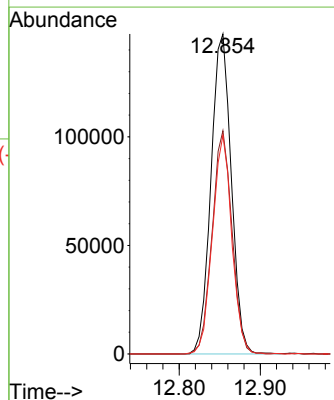
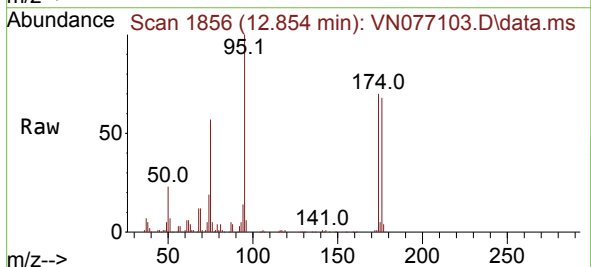
Instrument : MSVOA_N
 ClientSampleId : CHAMBER-B-72-WESTDL

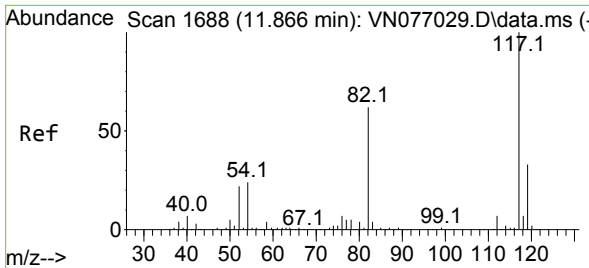
Tgt Ion: 43 Resp: 99098
 Ion Ratio Lower Upper
 43 100
 58 0.0 27.7 83.1#



#62
 4-Bromofluorobenzene
 Concen: 44.023 ug/l
 RT: 12.854 min Scan# 1856
 Delta R.T. 0.006 min
 Lab File: VN077103.D
 Acq: 22 Mar 2023 13:17

Tgt Ion: 95 Resp: 255772
 Ion Ratio Lower Upper
 95 100
 174 68.5 0.0 136.6
 176 65.3 0.0 130.0



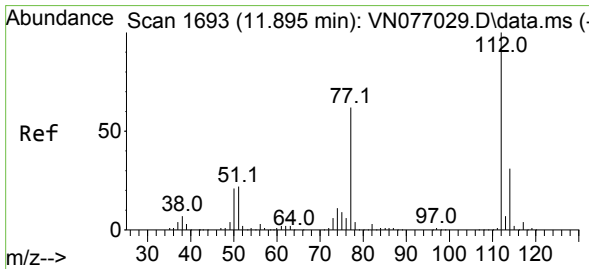
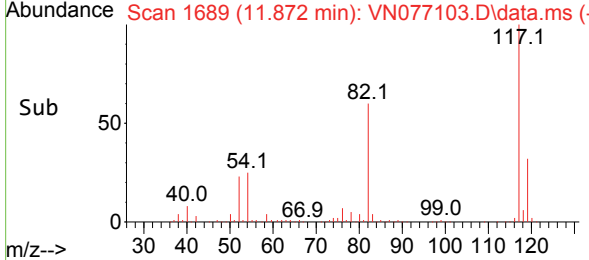
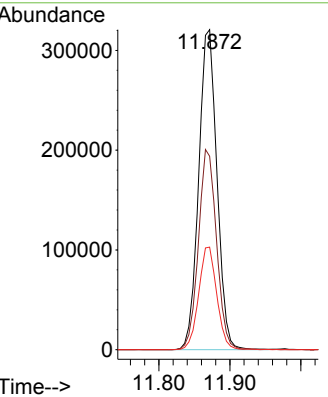
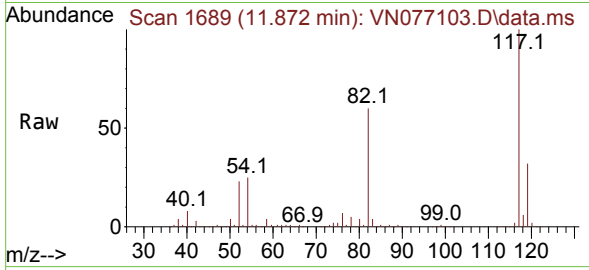


#63
 Chlorobenzene-d5
 Concen: 50.000 ug/l
 RT: 11.872 min Scan# 1689
 Delta R.T. 0.006 min
 Lab File: VN077103.D
 Acq: 22 Mar 2023 13:17

Instrument : MSVOA_N
 Client Sample Id : CHAMBER-B-72-WESTDL

Tgt Ion:117 Resp: 572605

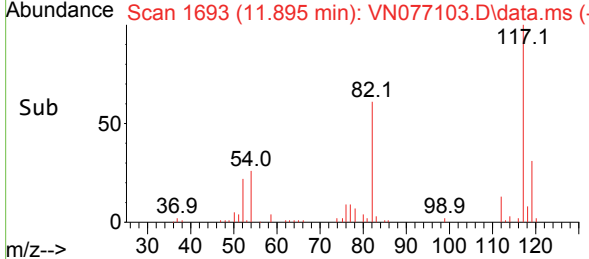
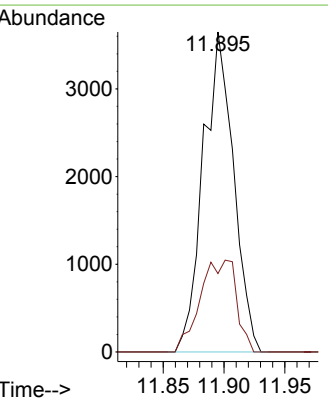
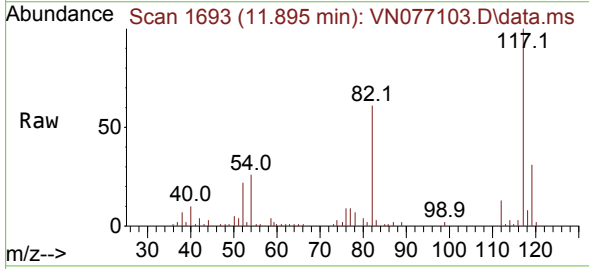
Ion	Ratio	Lower	Upper
117	100		
82	60.5	49.4	74.0
119	32.0	26.5	39.7

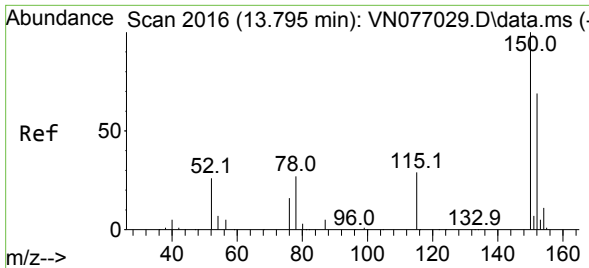


#65
 Chlorobenzene
 Concen: 0.480 ug/l
 RT: 11.895 min Scan# 1693
 Delta R.T. 0.000 min
 Lab File: VN077103.D
 Acq: 22 Mar 2023 13:17

Tgt Ion:112 Resp: 6324

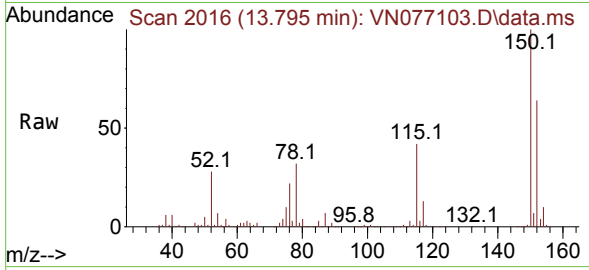
Ion	Ratio	Lower	Upper
112	100		
114	24.5	24.8	37.2



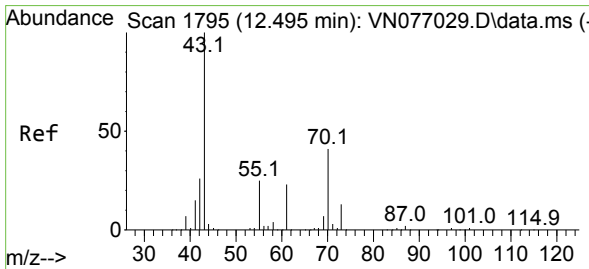
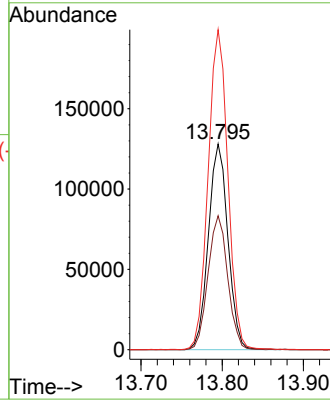
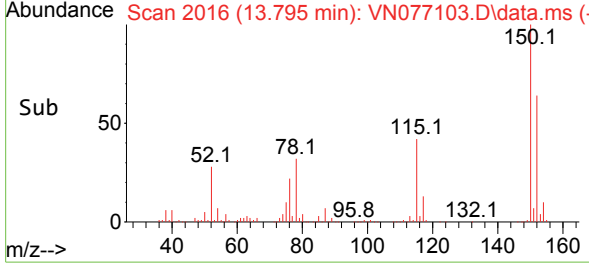


#72
 1,4-Dichlorobenzene-d4
 Concen: 50.000 ug/l
 RT: 13.795 min Scan# 2016
 Delta R.T. -0.000 min
 Lab File: VN077103.D
 Acq: 22 Mar 2023 13:17

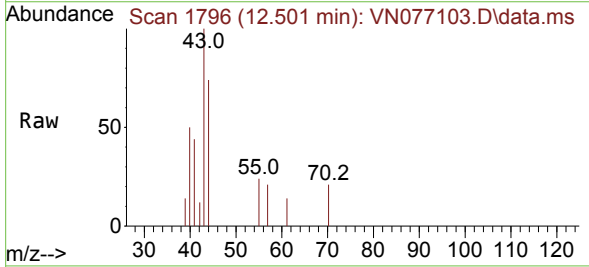
Instrument : MSVOA_N
 ClientSampleId : CHAMBER-B-72-WESTDL



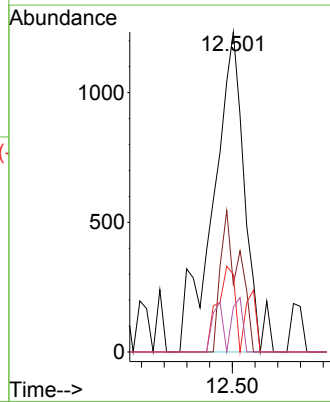
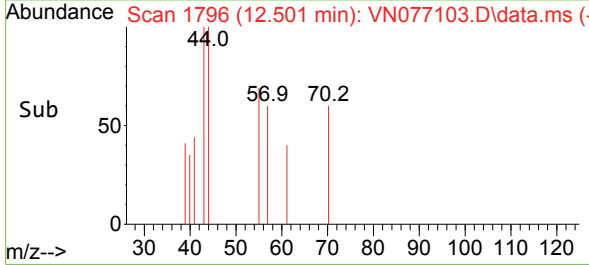
Tgt Ion:152 Resp: 213907
 Ion Ratio Lower Upper
 152 100
 115 65.6 31.9 95.7
 150 157.1 0.0 348.0

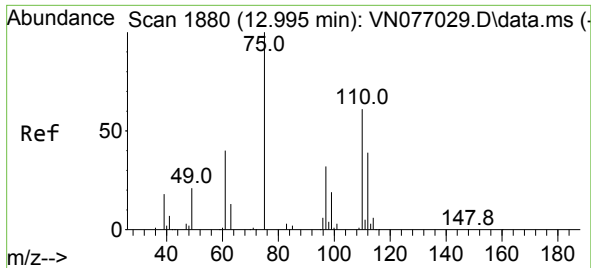


#74
 N-amy1 acetate
 Concen: 0.284 ug/l
 RT: 12.501 min Scan# 1796
 Delta R.T. 0.006 min
 Lab File: VN077103.D
 Acq: 22 Mar 2023 13:17



Tgt Ion: 43 Resp: 2355
 Ion Ratio Lower Upper
 43 100
 70 26.4 33.6 50.4#
 55 15.0 20.3 30.5#
 61 5.7 18.9 28.3#

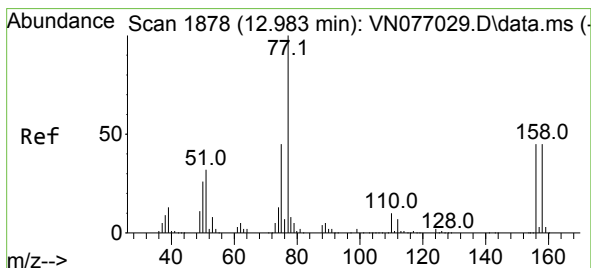
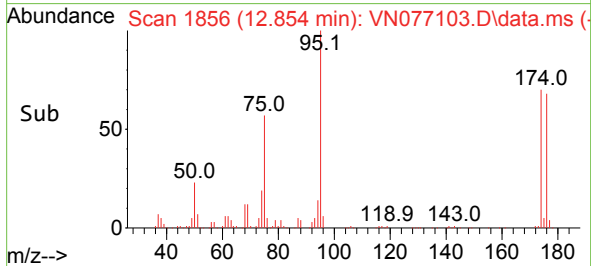
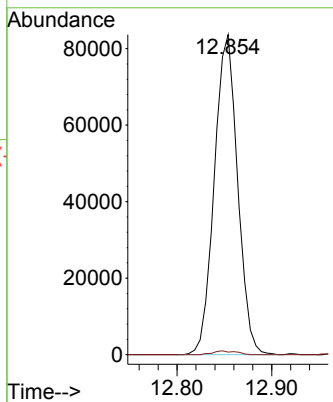
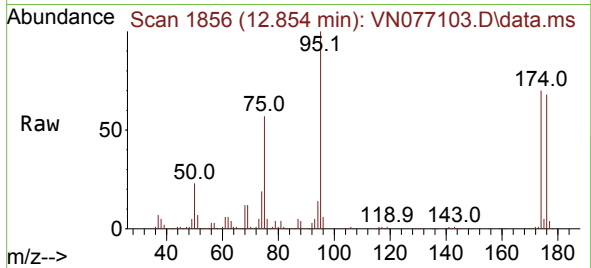




#76
 1,2,3-Trichloropropane
 Concen: 25.807 ug/l
 RT: 12.854 min Scan# 1856
 Delta R.T. -0.141 min
 Lab File: VN077103.D
 Acq: 22 Mar 2023 13:17

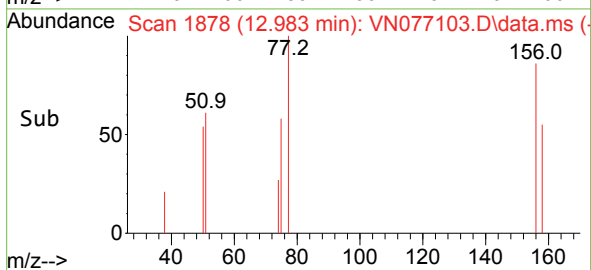
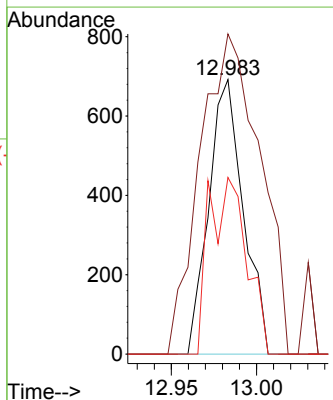
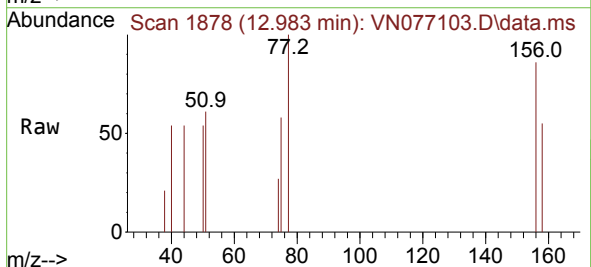
Instrument : MSVOA_N
 ClientSampleId : CHAMBER-B-72-WESTDL

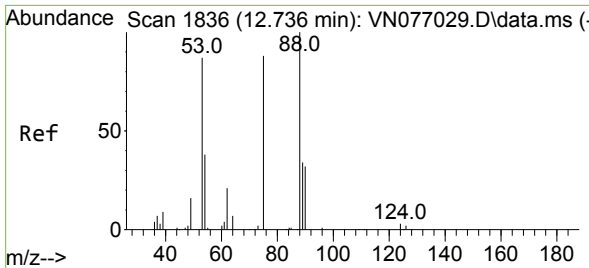
Tgt Ion: 75 Resp: 142792
 Ion Ratio Lower Upper
 75 100
 77 1.2 107.3 322.0#



#77
 Bromobenzene
 Concen: 0.227 ug/l
 RT: 12.983 min Scan# 1878
 Delta R.T. 0.000 min
 Lab File: VN077103.D
 Acq: 22 Mar 2023 13:17

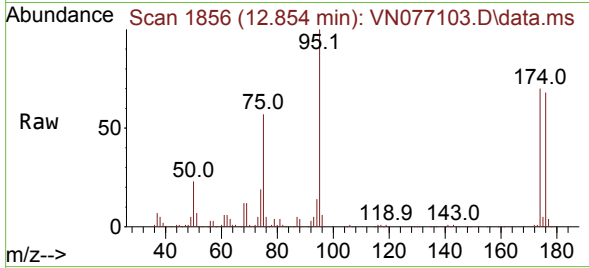
Tgt Ion: 156 Resp: 976
 Ion Ratio Lower Upper
 156 100
 77 201.9 124.8 374.3
 158 70.1 48.6 145.9



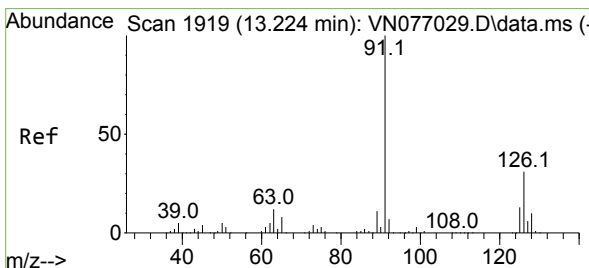
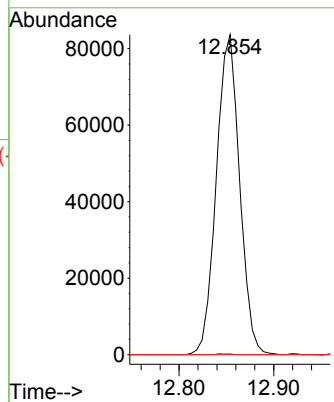
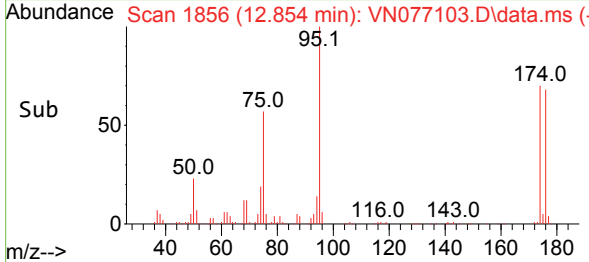


#81
 trans-1,4-Dichloro-2-butene
 Concen: 71.036 ug/l
 RT: 12.854 min Scan# 1856
 Delta R.T. 0.118 min
 Lab File: VN077103.D
 Acq: 22 Mar 2023 13:17

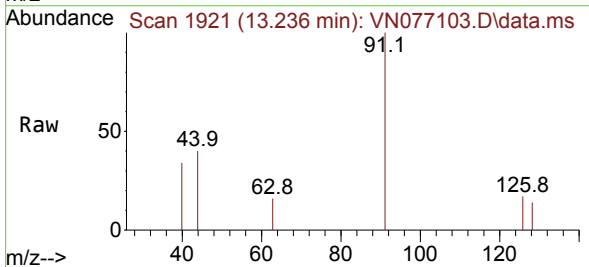
Instrument : MSVOA_N
 ClientSampleId : CHAMBER-B-72-WESTDL



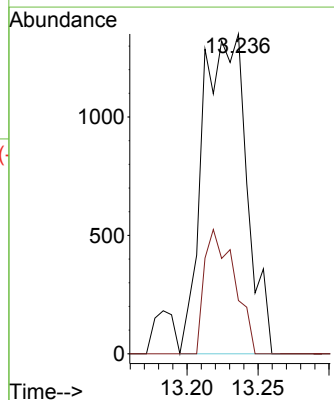
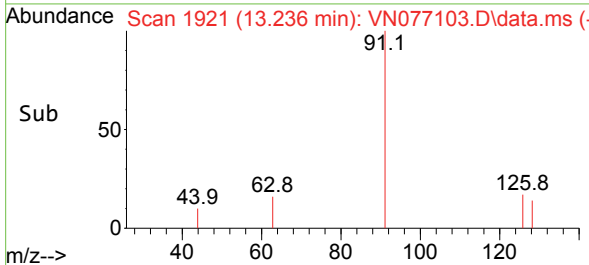
Tgt Ion: 75 Resp: 142792
 Ion Ratio Lower Upper
 75 100
 53 0.2 80.8 121.2#
 89 0.0 34.2 51.4#

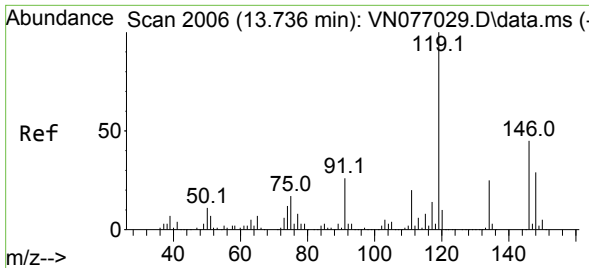


#82
 4-Chlorotoluene
 Concen: 0.217 ug/l
 RT: 13.236 min Scan# 1921
 Delta R.T. 0.012 min
 Lab File: VN077103.D
 Acq: 22 Mar 2023 13:17



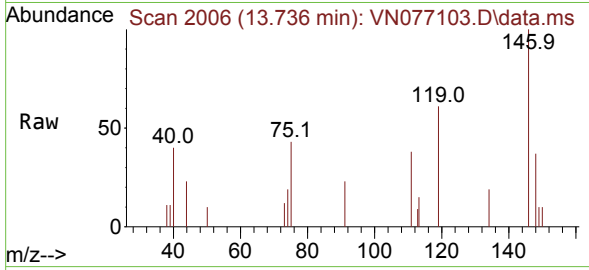
Tgt Ion: 91 Resp: 2908
 Ion Ratio Lower Upper
 91 100
 126 26.6 15.5 46.5





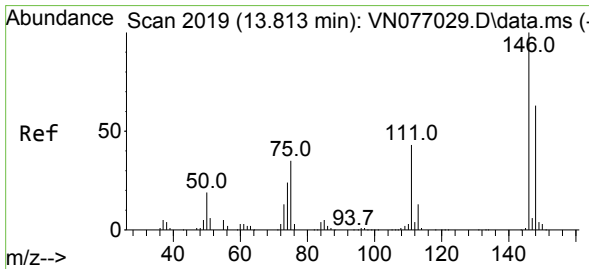
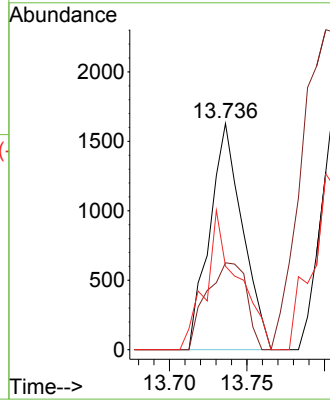
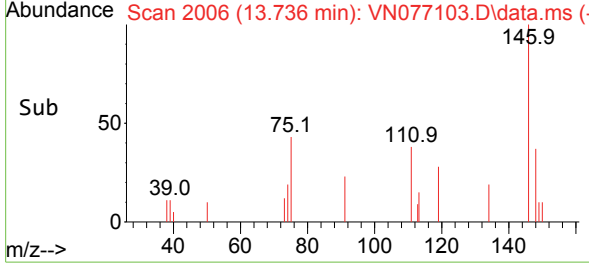
#87
 1,3-Dichlorobenzene
 Concen: 0.296 ug/l
 RT: 13.736 min Scan# 2006
 Delta R.T. 0.000 min
 Lab File: VN077103.D
 Acq: 22 Mar 2023 13:17

Instrument : MSVOA_N
 ClientSampleId : CHAMBER-B-72-WESTDL

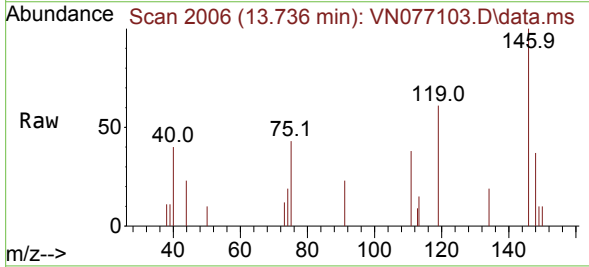


Tgt Ion:146 Resp: 2405

Ion	Ratio	Lower	Upper
146	100		
111	46.6	21.9	65.5
148	60.5	32.1	96.5

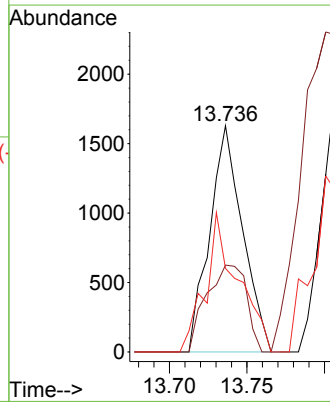
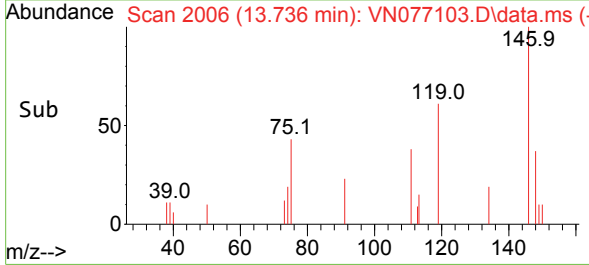


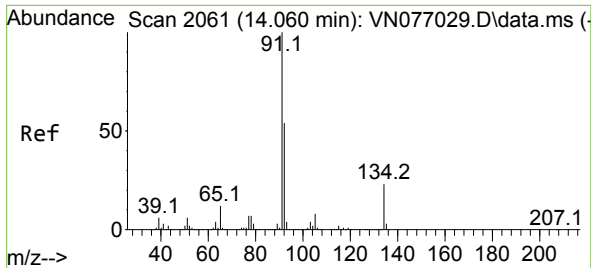
#88
 1,4-Dichlorobenzene
 Concen: 0.298 ug/l
 RT: 13.736 min Scan# 2006
 Delta R.T. -0.077 min
 Lab File: VN077103.D
 Acq: 22 Mar 2023 13:17



Tgt Ion:146 Resp: 2405

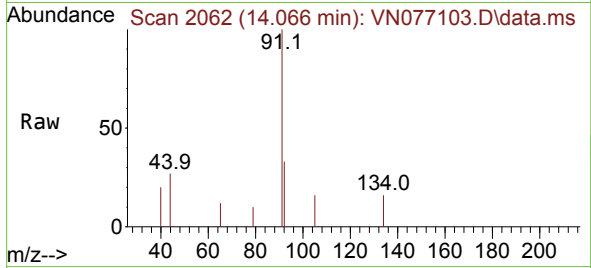
Ion	Ratio	Lower	Upper
146	100		
111	46.6	21.5	64.5
148	60.5	31.9	95.9



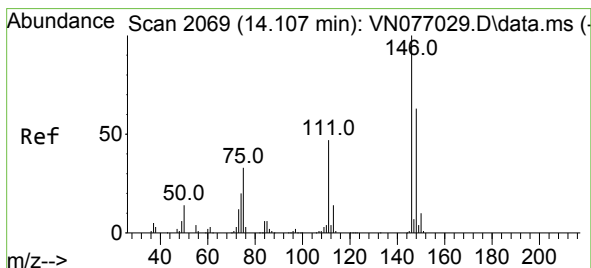
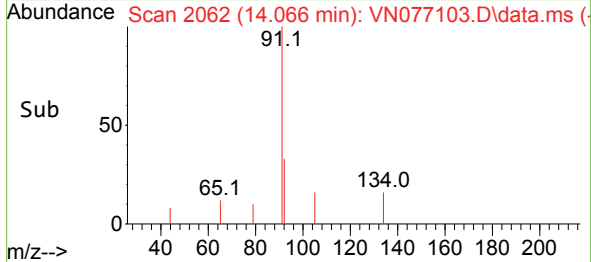
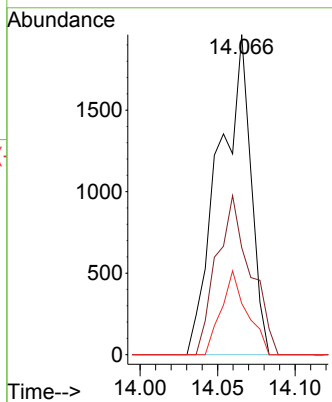


#89
 n-Butylbenzene
 Concen: 0.209 ug/l
 RT: 14.066 min Scan# 2062
 Delta R.T. 0.006 min
 Lab File: VN077103.D
 Acq: 22 Mar 2023 13:17

Instrument : MSVOA_N
 ClientSampleId : CHAMBER-B-72-WESTDL

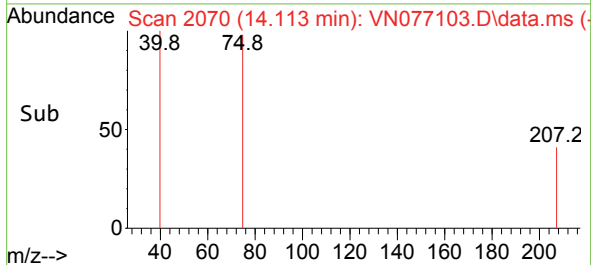
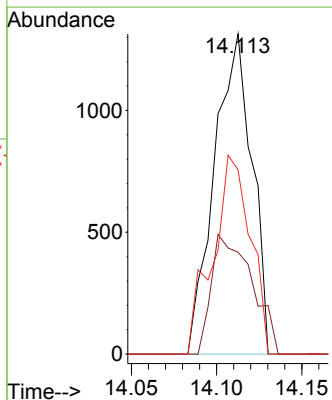
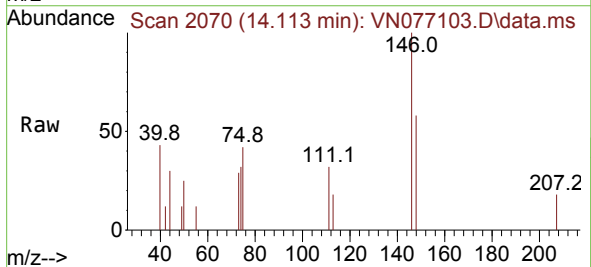


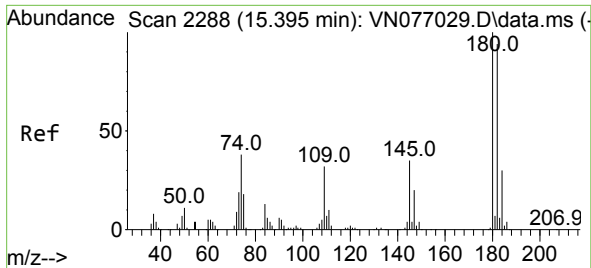
Tgt Ion: 91 Resp: 2819
 Ion Ratio Lower Upper
 91 100
 92 52.5 26.5 79.5
 134 21.0 11.7 35.1



#91
 1,2-Dichlorobenzene
 Concen: 0.248 ug/l
 RT: 14.113 min Scan# 2070
 Delta R.T. 0.006 min
 Lab File: VN077103.D
 Acq: 22 Mar 2023 13:17

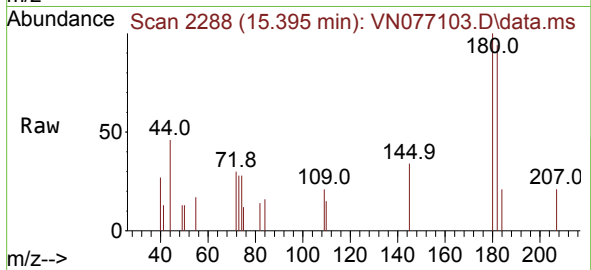
Tgt Ion:146 Resp: 2009
 Ion Ratio Lower Upper
 146 100
 111 40.4 22.6 67.7
 148 62.4 31.6 95.0



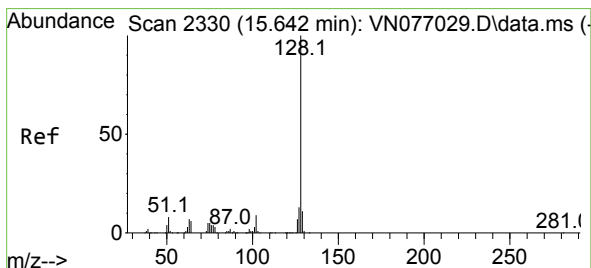
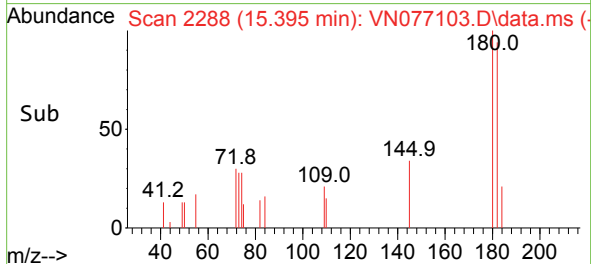
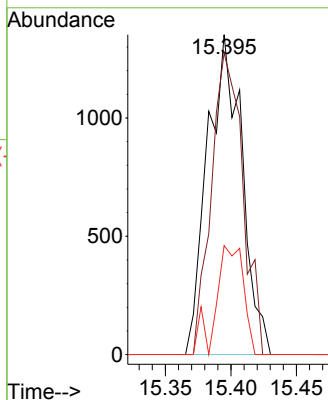


#93
 1,2,4-Trichlorobenzene
 Concen: 0.677 ug/l
 RT: 15.395 min Scan# 21
 Delta R.T. -0.000 min
 Lab File: VN077103.D
 Acq: 22 Mar 2023 13:17

Instrument :
 MSVOA_N
 ClientSampleId :
 CHAMBER-B-72-WESTDL

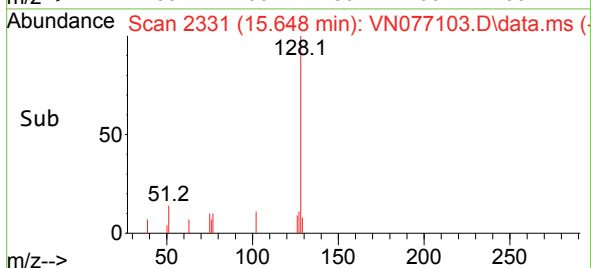
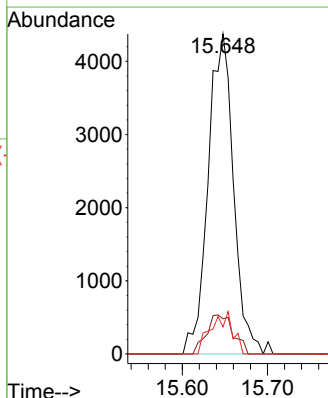
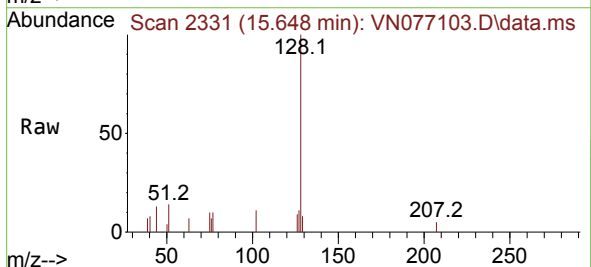


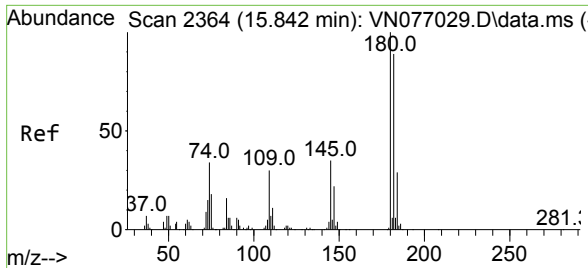
Tgt Ion:180 Resp: 2476
 Ion Ratio Lower Upper
 180 100
 182 85.9 47.3 141.9
 145 27.2 16.9 50.7



#95
 Naphthalene
 Concen: 2.527 ug/l
 RT: 15.648 min Scan# 2331
 Delta R.T. 0.006 min
 Lab File: VN077103.D
 Acq: 22 Mar 2023 13:17

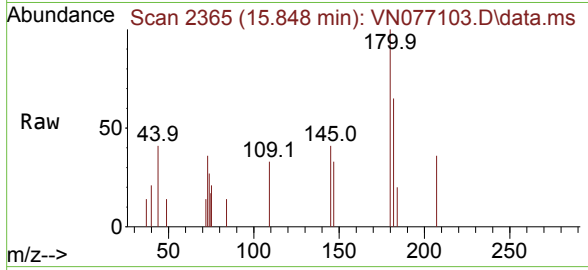
Tgt Ion:128 Resp: 9095
 Ion Ratio Lower Upper
 128 100
 127 12.8 10.0 15.0
 129 11.2 8.6 13.0





#96
 1,2,3-Trichlorobenzene
 Concen: 0.662 ug/l
 RT: 15.848 min Scan# 21
 Delta R.T. 0.006 min
 Lab File: VN077103.D
 Acq: 22 Mar 2023 13:17

Instrument :
 MSVOA_N
 ClientSampleId :
 CHAMBER-B-72-WESTDL



Tgt Ion:180 Resp: 2429

Ion	Ratio	Lower	Upper
180	100		
182	95.6	47.4	142.2
145	29.6	17.9	53.8

