

Data Path : Z:\voasrv\HPCHEM1\MSVOA_N\Data\VN032223\
 Data File : VN077106.D
 Acq On : 22 Mar 2023 14:29
 Operator : JC\MD
 Sample : 01849-03
 Misc : 11.50 gr/5.0mL/100uL/5.0mL/MSVOA_N/MeOH
 ALS Vial : 1 Sample Multiplier: 1

Instrument :
 MSVOA_N
 ClientSampleId :
 CB-10-17.5-030823

Quant Time: Mar 22 23:24:06 2023
 Quant Method : Z:\voasrv\HPCHEM1\MSVOA_N\methods\82N031723W.M
 Quant Title : SW846 8260
 QLast Update : Mon Mar 20 08:50:30 2023
 Response via : Initial Calibration

Compound	R.T.	QIon	Response	Conc	Units	Dev(Min)

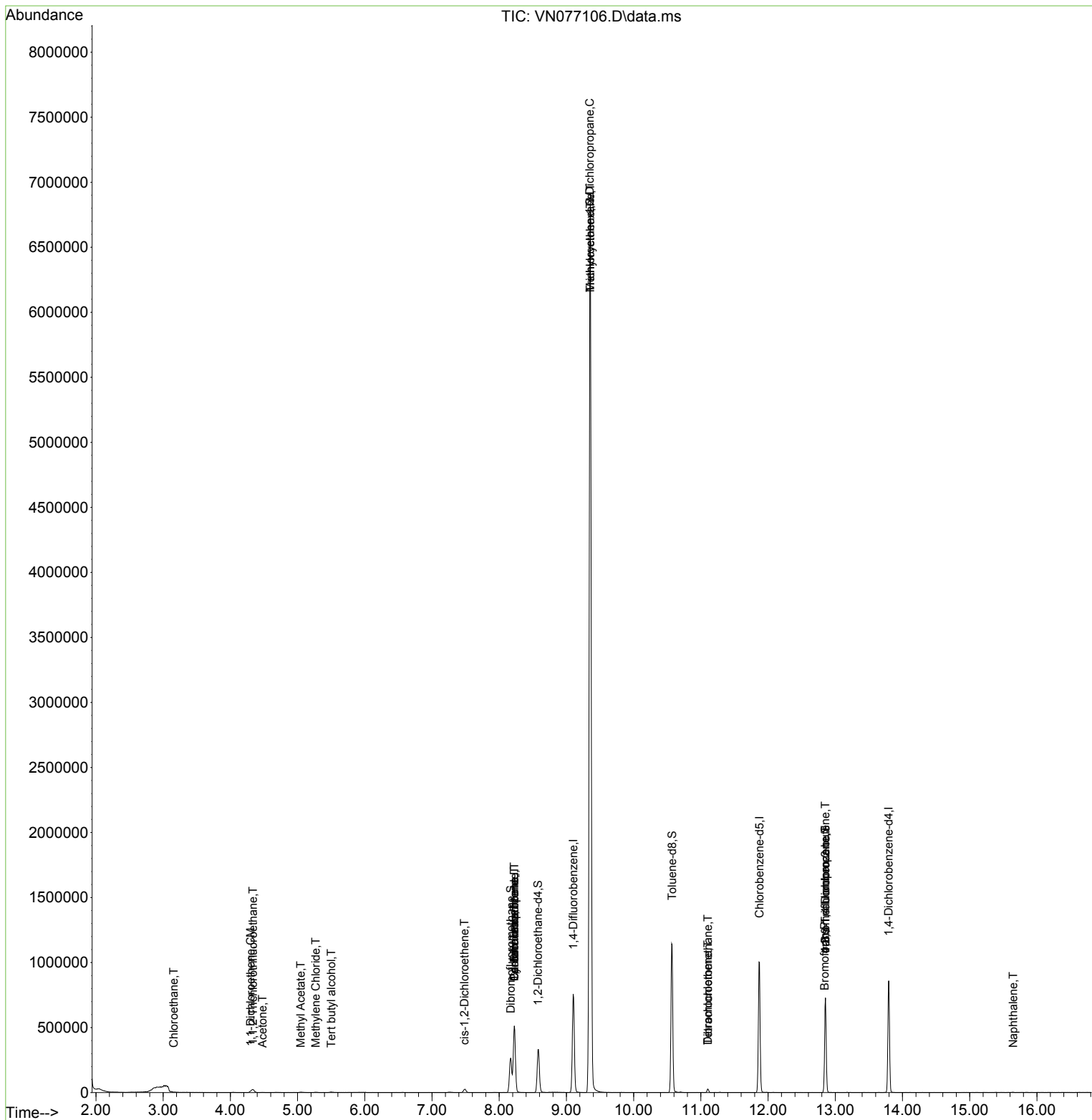
Internal Standards						
1) Pentafluorobenzene	8.225	168	345465	50.000	ug/l	0.00
34) 1,4-Difluorobenzene	9.101	114	626383	50.000	ug/l	0.00
63) Chlorobenzene-d5	11.871	117	559335	50.000	ug/l	0.00
72) 1,4-Dichlorobenzene-d4	13.795	152	212838	50.000	ug/l	0.00
System Monitoring Compounds						
33) 1,2-Dichloroethane-d4	8.578	65	276831	50.167	ug/l	0.00
Spiked Amount	50.000	Range 74 - 125	Recovery	=	100.340%	
35) Dibromofluoromethane	8.172	113	196112	44.707	ug/l	0.00
Spiked Amount	50.000	Range 75 - 124	Recovery	=	89.420%	
50) Toluene-d8	10.572	98	779660	49.756	ug/l	0.00
Spiked Amount	50.000	Range 86 - 113	Recovery	=	99.520%	
62) 4-Bromofluorobenzene	12.854	95	252023	45.515	ug/l	0.00
Spiked Amount	50.000	Range 83 - 123	Recovery	=	91.040%	
Target Compounds						
					Qvalue	
2) Dichlorodifluoromethane	2.084	85	164	Below Cal	#	42
6) Chloroethane	3.160	64	832	0.350	ug/l #	42
9) 1,1,2-Trichlorotrifluo...	4.337	101	14360	3.132	ug/l #	71
11) Tert butyl alcohol	5.501	59	2980	3.706	ug/l #	72
12) 1,1-Dichloroethene	4.301	96	4490	1.071	ug/l #	88
16) Acetone	4.478	43	1117	0.454	ug/l #	43
18) Methyl Acetate	5.048	43	6434	0.694	ug/l #	67
20) Methylene Chloride	5.272	84	1807	0.339	ug/l #	82
27) cis-1,2-Dichloroethene	7.484	96	13171	2.530	ug/l	97
31) Cyclohexane	8.225	56	9544	1.057	ug/l #	8
36) 1,1-Dichloropropene	8.225	75	35008	5.110	ug/l #	51
38) Carbon Tetrachloride	8.225	117	38510	5.770	ug/l #	14
39) Methylcyclohexane	9.354	83	32291	4.026	ug/l #	1
44) Trichloroethene	9.354	130	2324114	486.940	ug/l	92
45) 1,2-Dichloropropane	9.348	63	8635	1.565	ug/l #	1
60) Dibromochloromethane	11.107	129	5935	1.208	ug/l #	11
64) Tetrachloroethene	11.107	164	5595	1.490	ug/l	94
71) Bromoform	12.842	173	786	0.244	ug/l #	28
76) 1,2,3-Trichloropropane	12.854	75	140687	25.555	ug/l #	1
81) trans-1,4-Dichloro-2-b...	12.854	75	140687	70.341	ug/l #	10
95) Naphthalene	15.648	128	1858	2.038	ug/l #	79

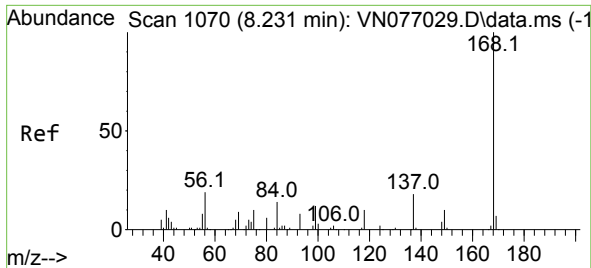
(#) = qualifier out of range (m) = manual integration (+) = signals summed

Data Path : Z:\voasrv\HPCHEM1\MSVOA_N\Data\VN032223\
 Data File : VN077106.D
 Acq On : 22 Mar 2023 14:29
 Operator : JC\MD
 Sample : 01849-03
 Misc : 11.50 gr/5.0mL/100uL/5.0mL/MSVOA_N/MeOH
 ALS Vial : 1 Sample Multiplier: 1

Instrument :
 MSVOA_N
 ClientSampleId :
 CB-10-17.5-030823

Quant Time: Mar 22 23:24:06 2023
 Quant Method : Z:\voasrv\HPCHEM1\MSVOA_N\methods\82N031723W.M
 Quant Title : SW846 8260
 QLast Update : Mon Mar 20 08:50:30 2023
 Response via : Initial Calibration

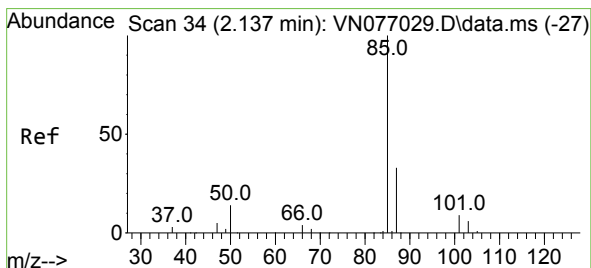
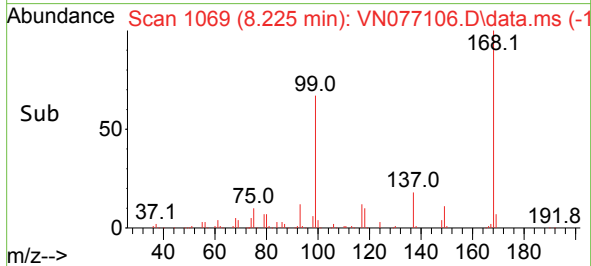
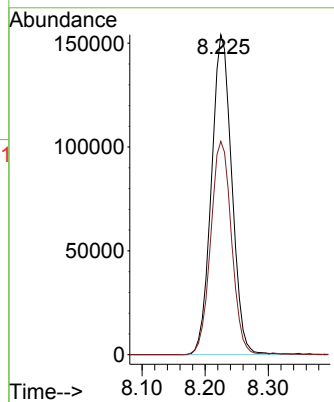
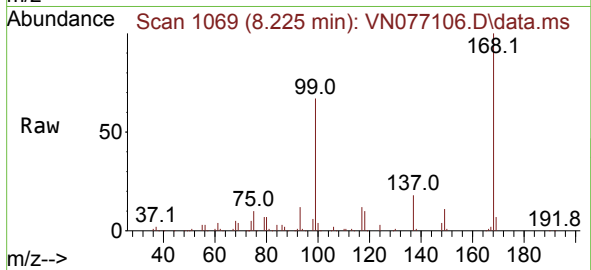




#1
 Pentafluorobenzene
 Concen: 50.000 ug/l
 RT: 8.225 min Scan# 10
 Delta R.T. -0.006 min
 Lab File: VN077106.D
 Acq: 22 Mar 2023 14:29

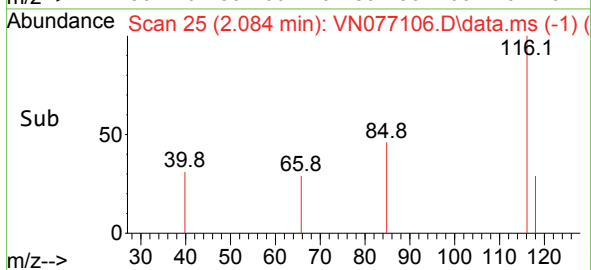
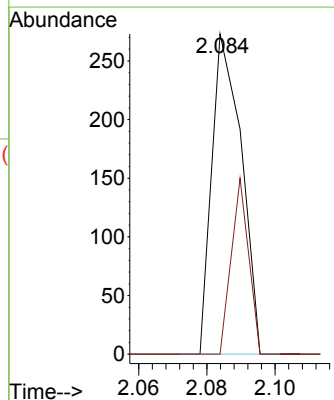
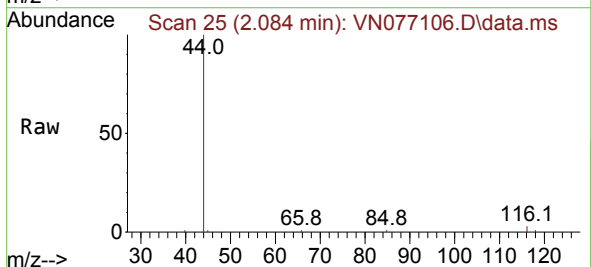
Instrument : MSVOA_N
 ClientSampleId : CB-10-17.5-030823

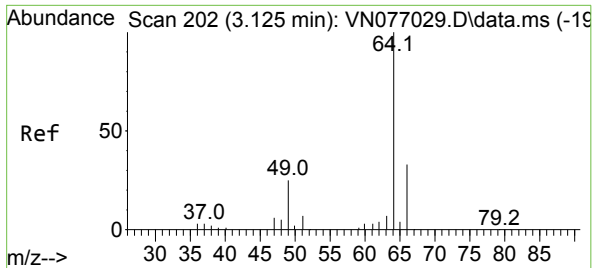
Tgt Ion:168 Resp: 345465
 Ion Ratio Lower Upper
 168 100
 99 66.7 53.9 80.9



#2
 Dichlorodifluoromethane
 Concen: Below Cal
 RT: 2.084 min Scan# 25
 Delta R.T. -0.053 min
 Lab File: VN077106.D
 Acq: 22 Mar 2023 14:29

Tgt Ion: 85 Resp: 164
 Ion Ratio Lower Upper
 85 100
 87 0.0 16.4 49.2#

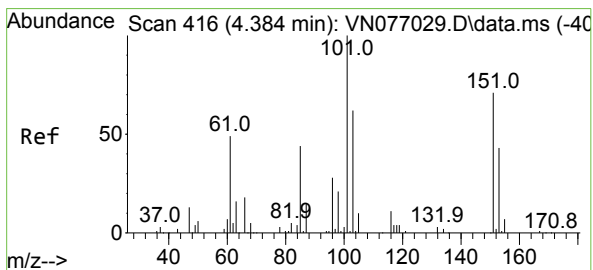
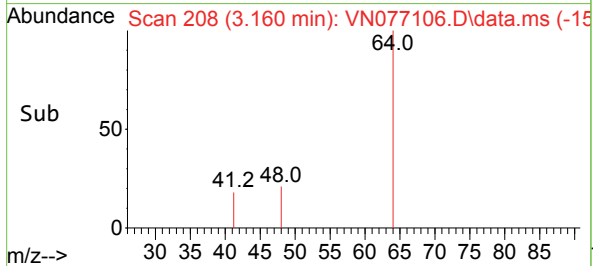
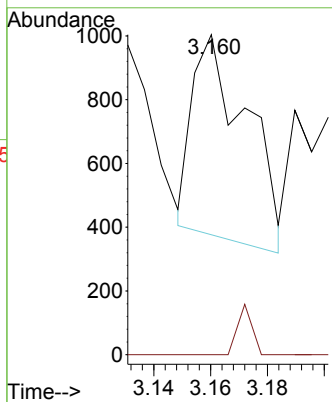
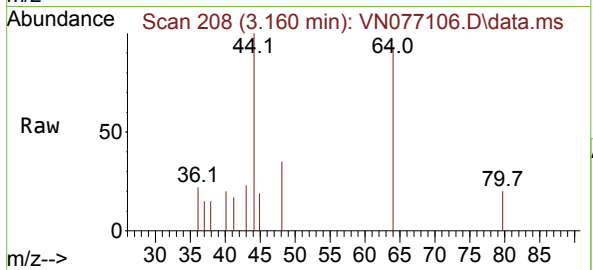




#6
 Chloroethane
 Concen: 0.350 ug/l
 RT: 3.160 min Scan# 208
 Delta R.T. 0.035 min
 Lab File: VN077106.D
 Acq: 22 Mar 2023 14:29

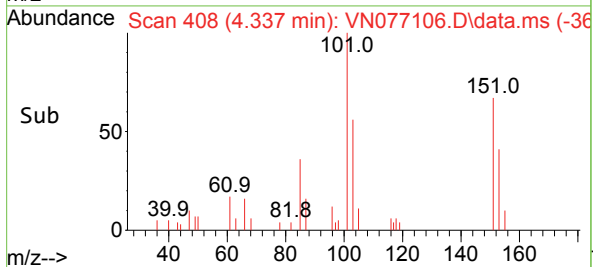
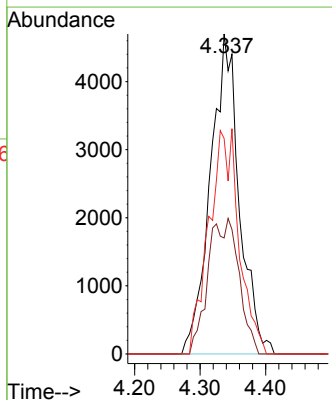
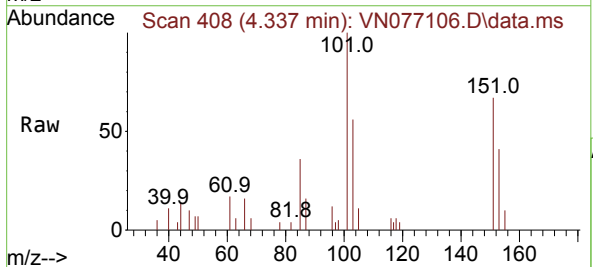
Instrument : MSVOA_N
 ClientSampleId : CB-10-17.5-030823

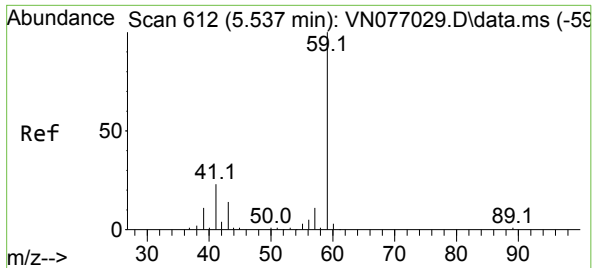
Tgt Ion: 64 Resp: 832
 Ion Ratio Lower Upper
 64 100
 66 0.0 26.3 39.5#



#9
 1,1,2-Trichlorotrifluoroethane
 Concen: 3.132 ug/l
 RT: 4.337 min Scan# 408
 Delta R.T. -0.047 min
 Lab File: VN077106.D
 Acq: 22 Mar 2023 14:29

Tgt Ion: 101 Resp: 14360
 Ion Ratio Lower Upper
 101 100
 85 0.0 36.6 55.0#
 151 73.0 56.9 85.3

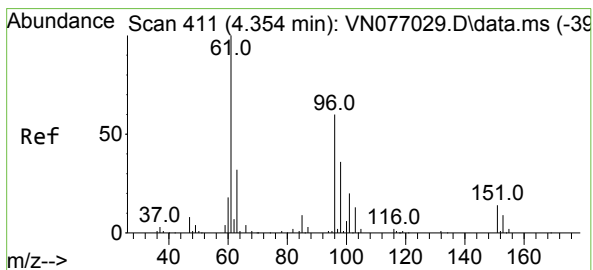
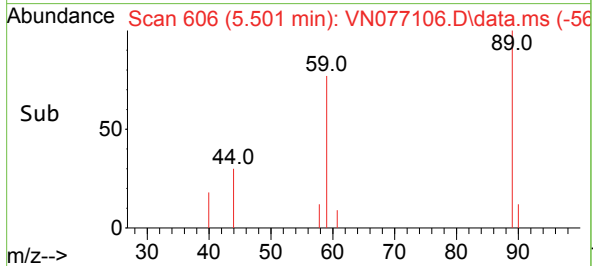
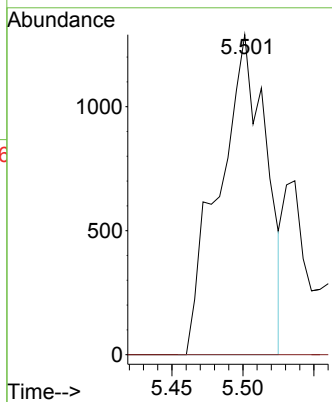
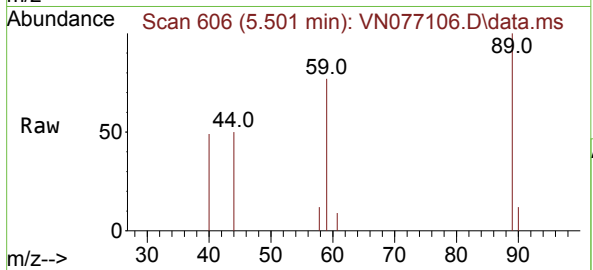




#11
 Tert butyl alcohol
 Concen: 3.706 ug/l
 RT: 5.501 min Scan# 606
 Delta R.T. -0.036 min
 Lab File: VN077106.D
 Acq: 22 Mar 2023 14:29

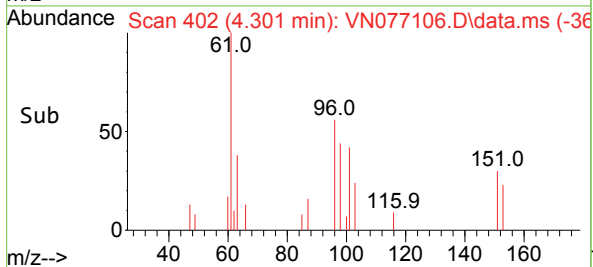
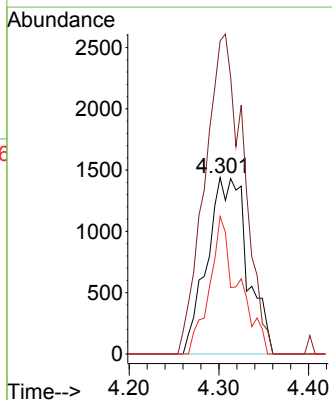
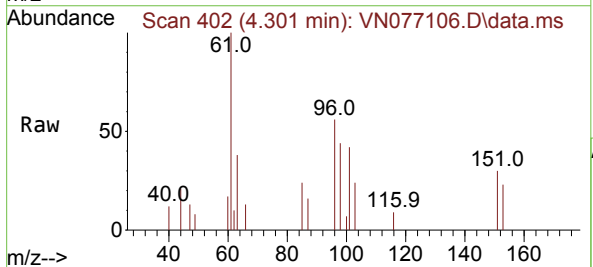
Instrument : MSVOA_N
 ClientSampleId : CB-10-17.5-030823

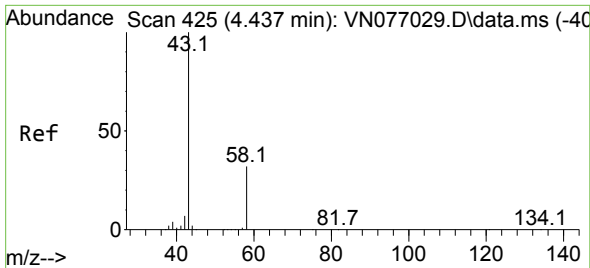
Tgt Ion: 59 Resp: 2980
 Ion Ratio Lower Upper
 59 100
 57 0.0 8.6 12.8#



#12
 1,1-Dichloroethene
 Concen: 1.071 ug/l
 RT: 4.301 min Scan# 402
 Delta R.T. -0.053 min
 Lab File: VN077106.D
 Acq: 22 Mar 2023 14:29

Tgt Ion: 96 Resp: 4490
 Ion Ratio Lower Upper
 96 100
 61 177.5 133.8 200.8
 98 78.0 48.6 72.8#

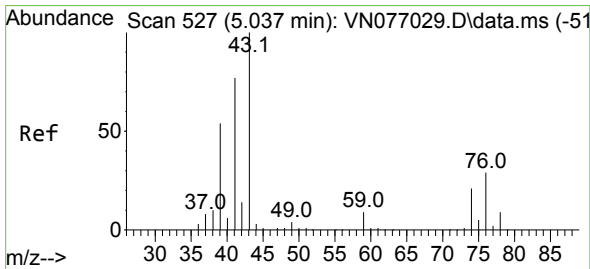
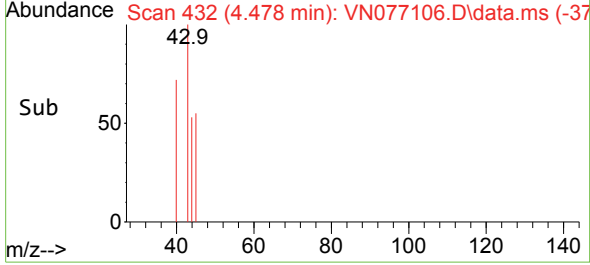
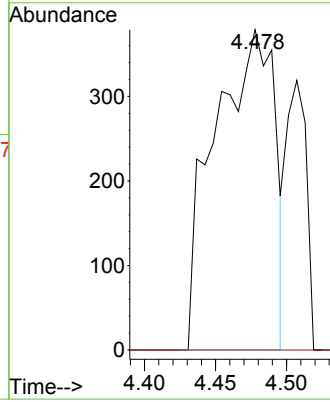
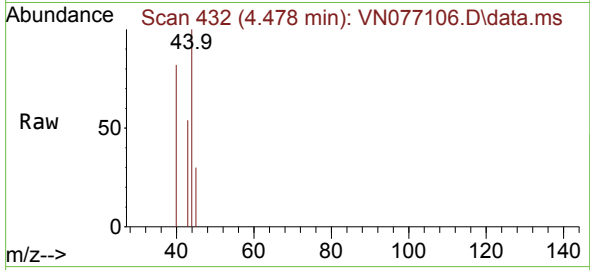




#16
 Acetone
 Concen: 0.454 ug/l
 RT: 4.478 min Scan# 411
 Delta R.T. 0.041 min
 Lab File: VN077106.D
 Acq: 22 Mar 2023 14:29

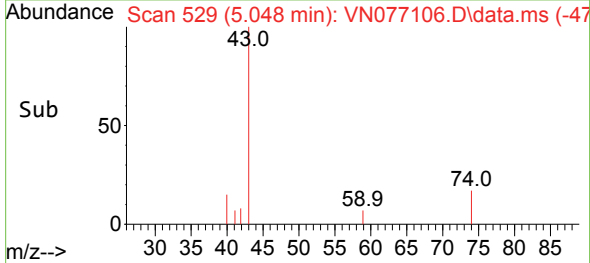
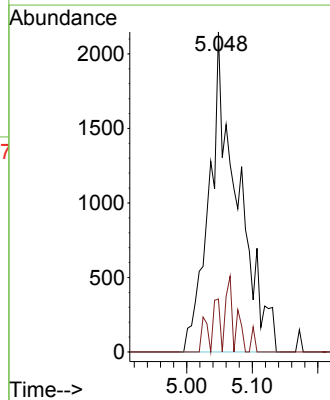
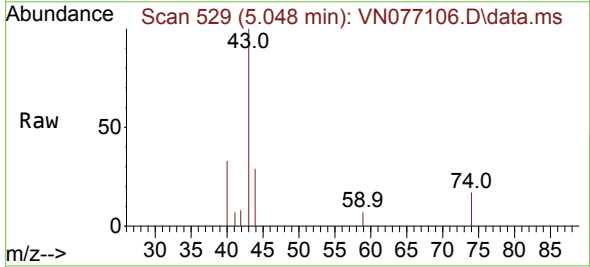
Instrument : MSVOA_N
 ClientSampleId : CB-10-17.5-030823

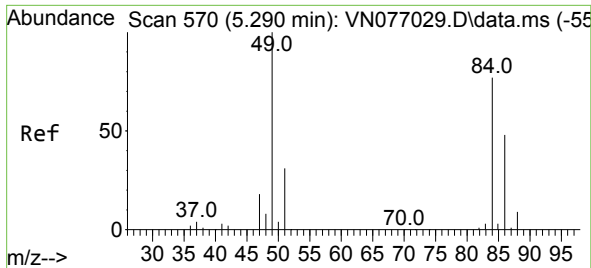
Tgt Ion: 43 Resp: 1117
 Ion Ratio Lower Upper
 43 100
 58 0.0 25.4 38.0#



#18
 Methyl Acetate
 Concen: 0.694 ug/l
 RT: 5.048 min Scan# 529
 Delta R.T. 0.011 min
 Lab File: VN077106.D
 Acq: 22 Mar 2023 14:29

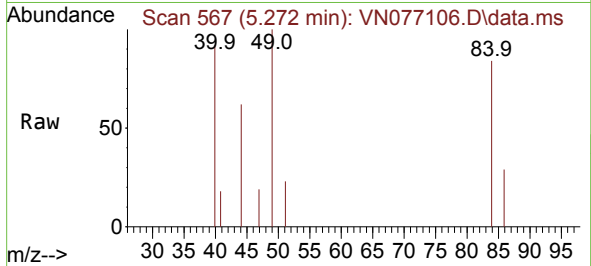
Tgt Ion: 43 Resp: 6434
 Ion Ratio Lower Upper
 43 100
 74 6.2 17.7 26.5#



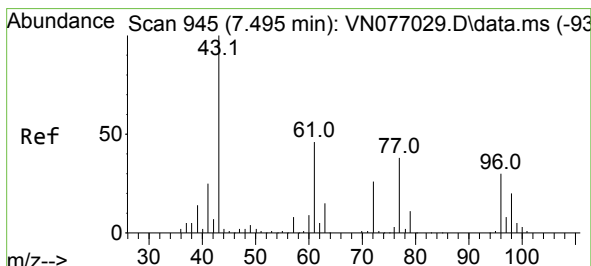
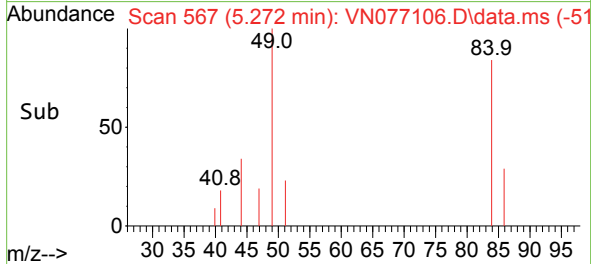
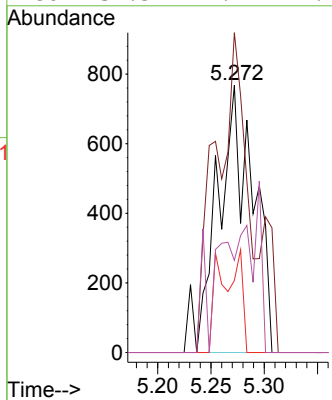


#20
 Methylene Chloride
 Concen: 0.339 ug/l
 RT: 5.272 min Scan# 511
 Delta R.T. -0.018 min
 Lab File: VN077106.D
 Acq: 22 Mar 2023 14:29

Instrument : MSVOA_N
 ClientSampleId : CB-10-17.5-030823

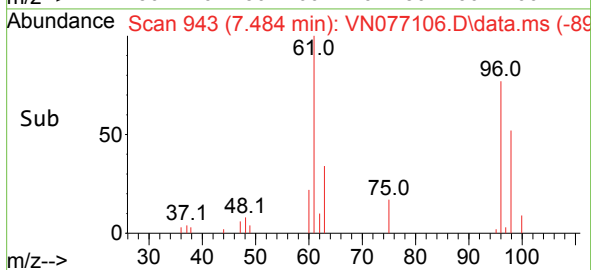
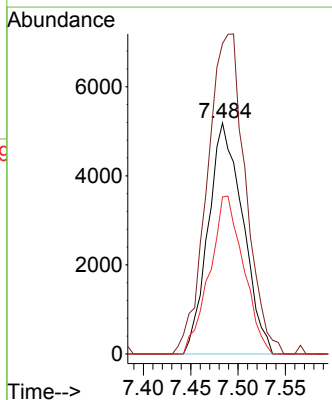
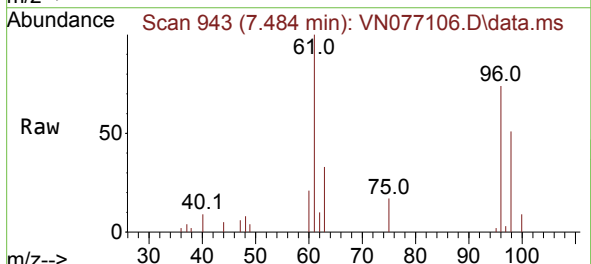


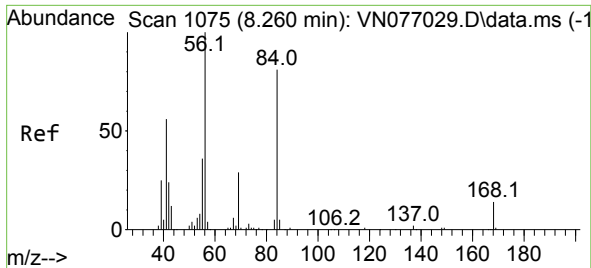
Tgt Ion: 84 Resp: 1807
 Ion Ratio Lower Upper
 84 100
 49 119.7 103.8 155.6
 51 27.0 32.3 48.5#
 86 34.5 49.9 74.9#



#27
 cis-1,2-Dichloroethene
 Concen: 2.530 ug/l
 RT: 7.484 min Scan# 943
 Delta R.T. -0.011 min
 Lab File: VN077106.D
 Acq: 22 Mar 2023 14:29

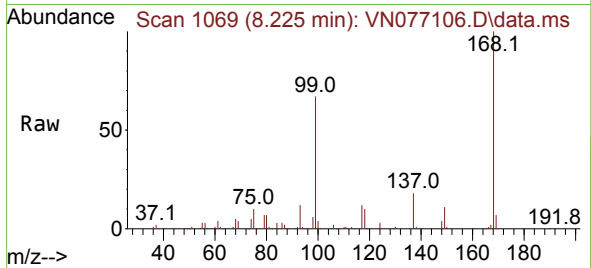
Tgt Ion: 96 Resp: 13171
 Ion Ratio Lower Upper
 96 100
 61 153.2 0.0 315.4
 98 67.0 0.0 128.6



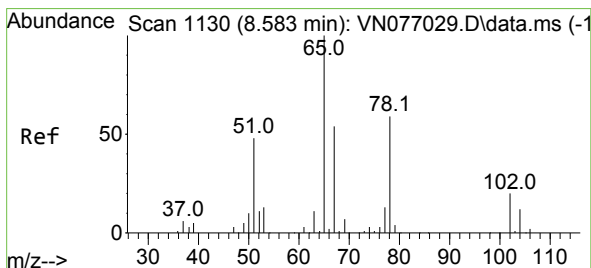
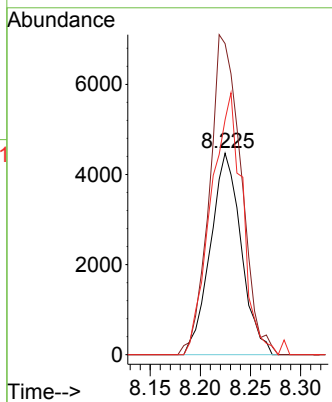
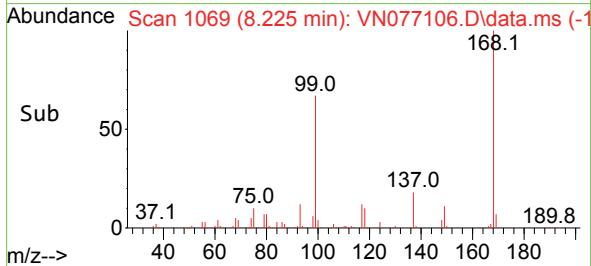


#31
 Cyclohexane
 Concen: 1.057 ug/l
 RT: 8.225 min Scan# 1069
 Delta R.T. -0.035 min
 Lab File: VN077106.D
 Acq: 22 Mar 2023 14:29

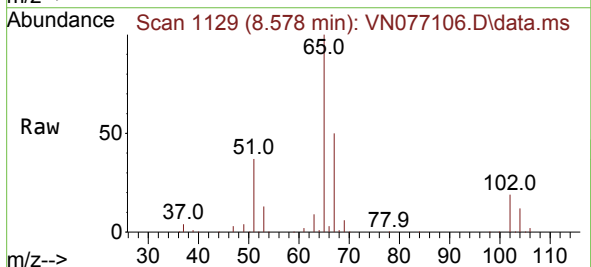
Instrument : MSVOA_N
 ClientSampleId : CB-10-17.5-030823



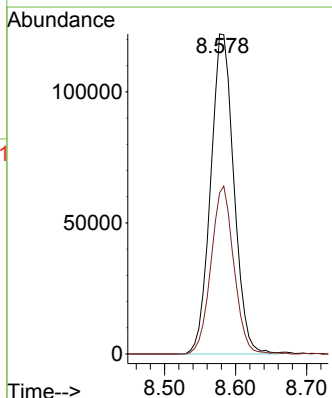
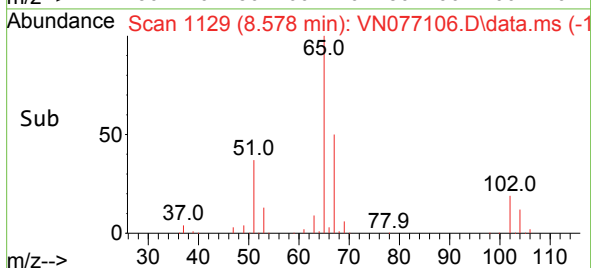
Tgt Ion: 56 Resp: 9544
 Ion Ratio Lower Upper
 56 100
 69 154.4 22.8 34.2#
 84 116.6 64.7 97.1#

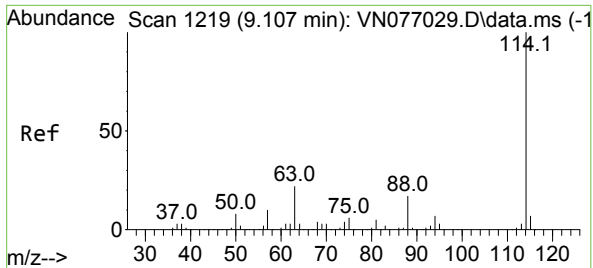


#33
 1,2-Dichloroethane-d4
 Concen: 50.167 ug/l
 RT: 8.578 min Scan# 1129
 Delta R.T. -0.005 min
 Lab File: VN077106.D
 Acq: 22 Mar 2023 14:29



Tgt Ion: 65 Resp: 276831
 Ion Ratio Lower Upper
 65 100
 67 51.5 0.0 105.2

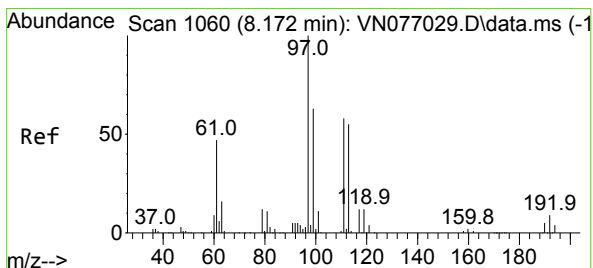
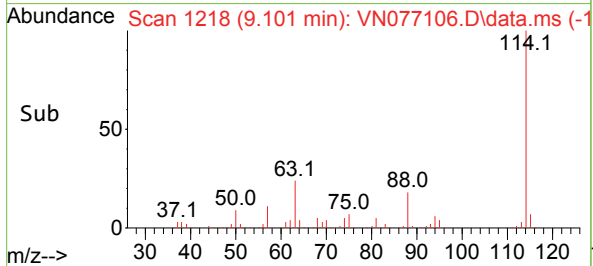
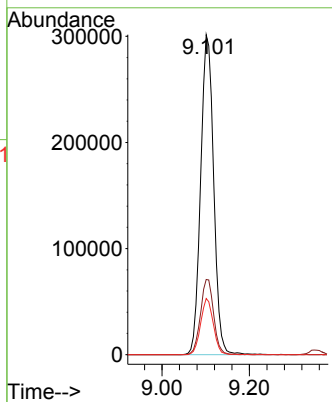
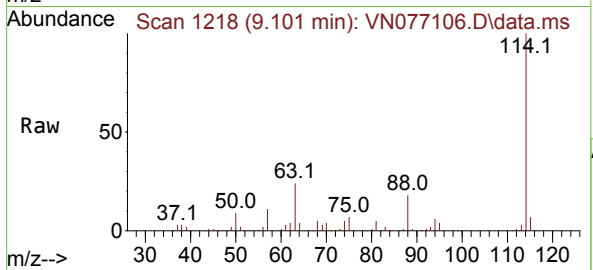




#34
 1,4-Difluorobenzene
 Concen: 50.000 ug/l
 RT: 9.101 min Scan# 11
 Delta R.T. -0.006 min
 Lab File: VN077106.D
 Acq: 22 Mar 2023 14:29

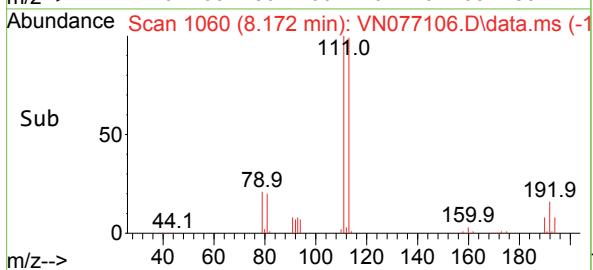
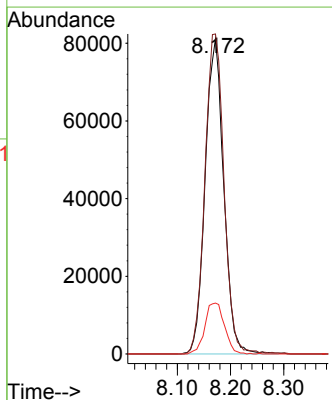
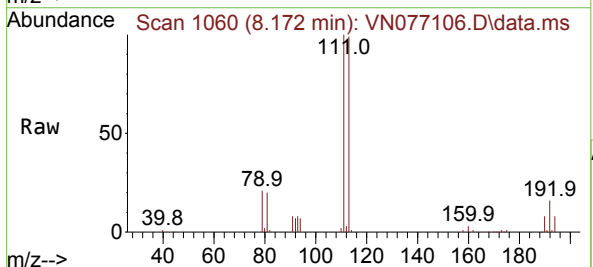
Instrument : MSVOA_N
 ClientSampleId : CB-10-17.5-030823

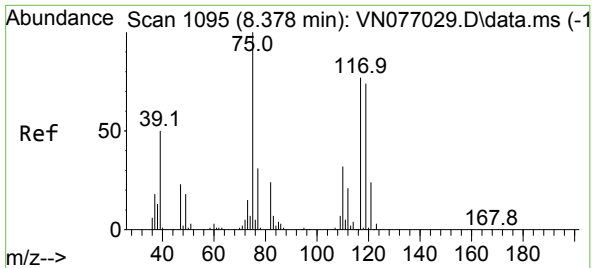
Tgt Ion	Resp	Lower	Upper
114	626383		
63	23.5	0.0	44.6
88	17.6	0.0	33.8



#35
 Dibromofluoromethane
 Concen: 44.707 ug/l
 RT: 8.172 min Scan# 1060
 Delta R.T. -0.000 min
 Lab File: VN077106.D
 Acq: 22 Mar 2023 14:29

Tgt Ion	Resp	Lower	Upper
113	196112		
111	104.5	82.2	123.2
192	17.1	13.0	19.6

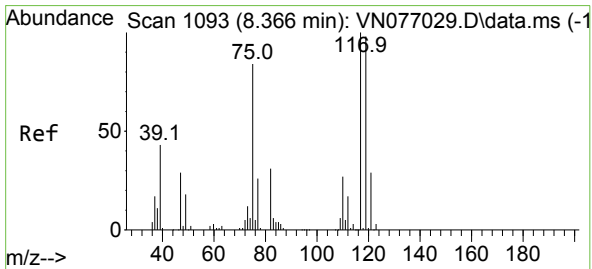
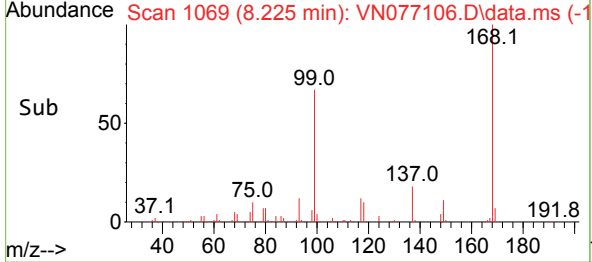
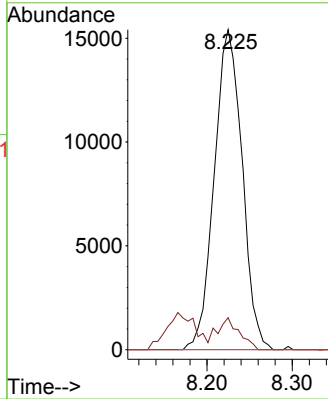
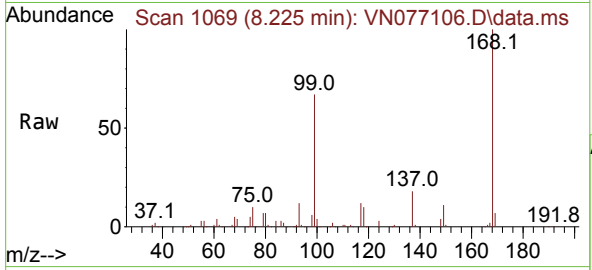




#36
 1,1-Dichloropropene
 Concen: 5.110 ug/l
 RT: 8.225 min Scan# 1069
 Delta R.T. -0.153 min
 Lab File: VN077106.D
 Acq: 22 Mar 2023 14:29

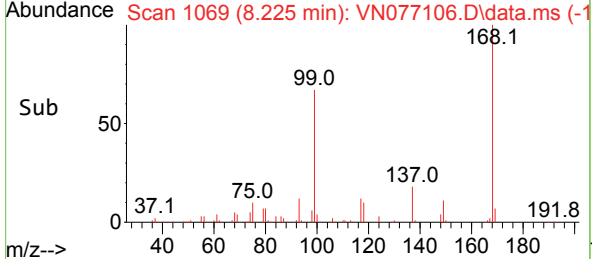
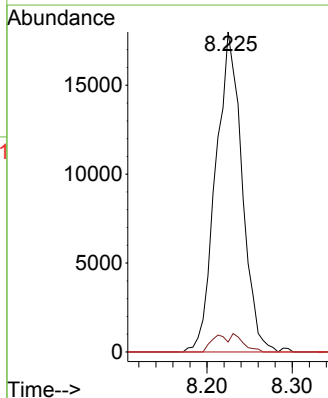
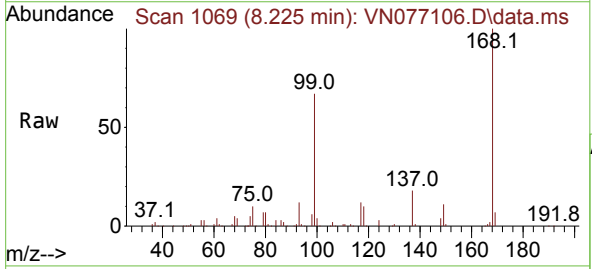
Instrument : MSVOA_N
 ClientSampleId : CB-10-17.5-030823

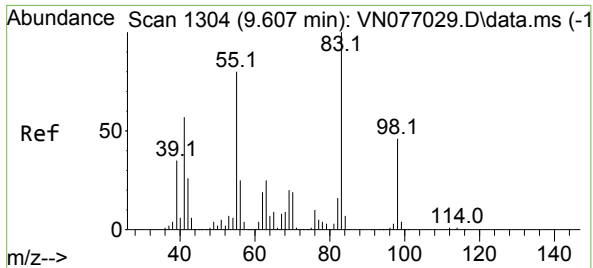
Tgt Ion	Resp	Lower	Upper
75	35008		
75	100		
110	7.9	15.9	47.7#
77	0.0	24.3	36.5#



#38
 Carbon Tetrachloride
 Concen: 5.770 ug/l
 RT: 8.225 min Scan# 1069
 Delta R.T. -0.141 min
 Lab File: VN077106.D
 Acq: 22 Mar 2023 14:29

Tgt Ion	Resp	Lower	Upper
117	38510		
117	100		
119	3.1	78.2	117.2#
121	0.0	23.2	34.8#

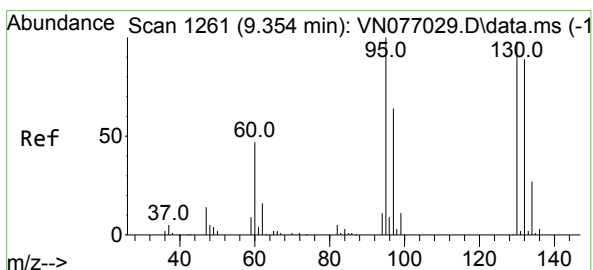
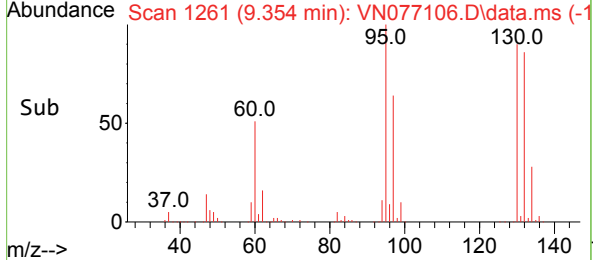
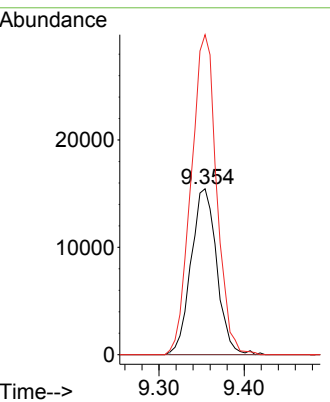
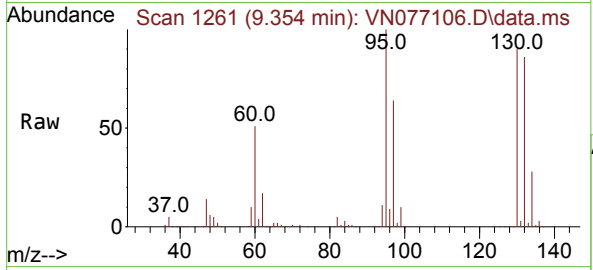




#39
 Methylcyclohexane
 Concen: 4.026 ug/l
 RT: 9.354 min Scan# 1261
 Delta R.T. -0.253 min
 Lab File: VN077106.D
 Acq: 22 Mar 2023 14:29

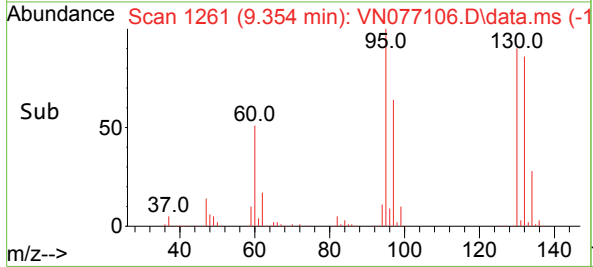
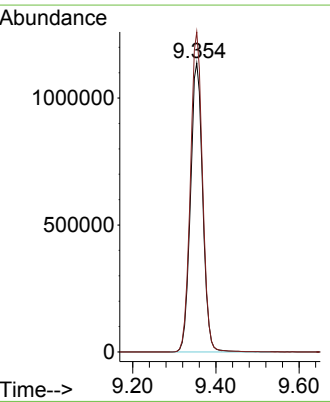
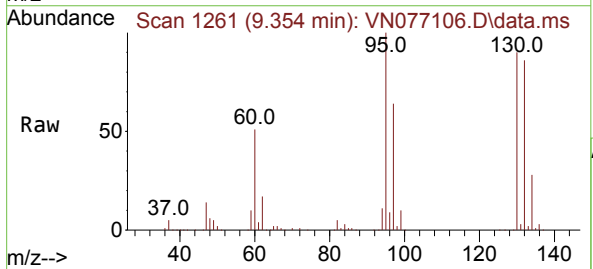
Instrument : MSVOA_N
 ClientSampleId : CB-10-17.5-030823

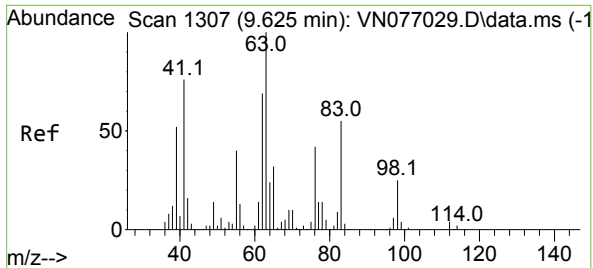
Tgt Ion	Resp	Lower	Upper
83	32291		
55	0.0	63.8	95.8#
98	192.8	37.1	55.7#



#44
 Trichloroethene
 Concen: 486.940 ug/l
 RT: 9.354 min Scan# 1261
 Delta R.T. -0.000 min
 Lab File: VN077106.D
 Acq: 22 Mar 2023 14:29

Tgt Ion	Resp	Lower	Upper
130	2324114		
95	110.8	0.0	204.4

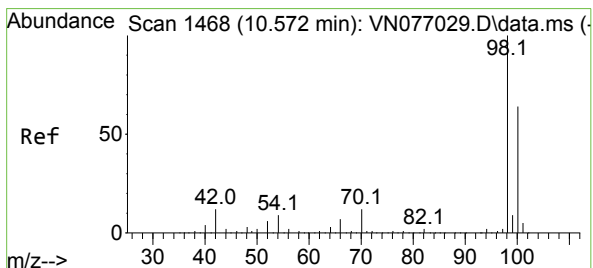
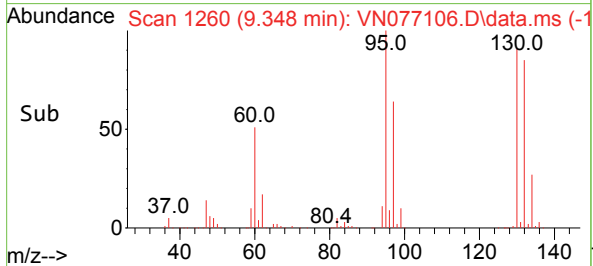
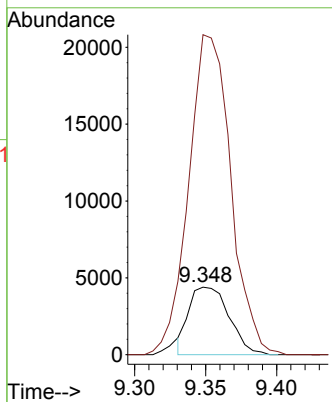
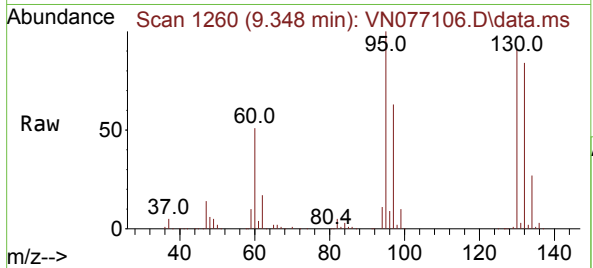




#45
 1,2-Dichloropropane
 Concen: 1.565 ug/l
 RT: 9.348 min Scan# 11
 Delta R.T. -0.276 min
 Lab File: VN077106.D
 Acq: 22 Mar 2023 14:29

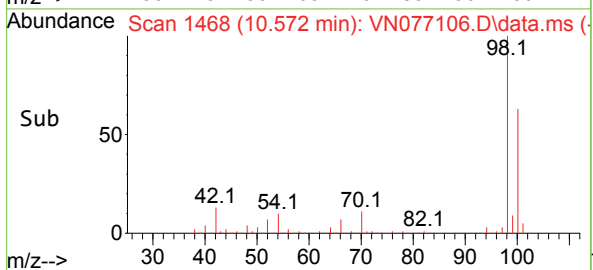
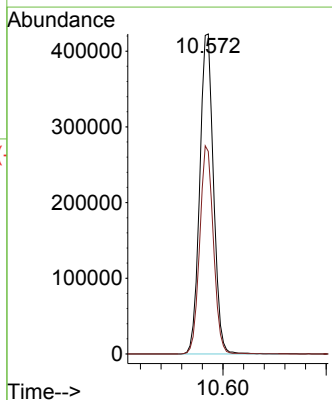
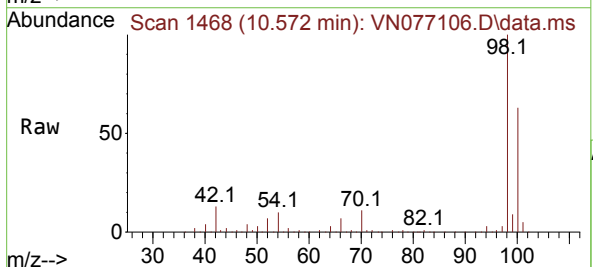
Instrument : MSVOA_N
 ClientSampleId : CB-10-17.5-030823

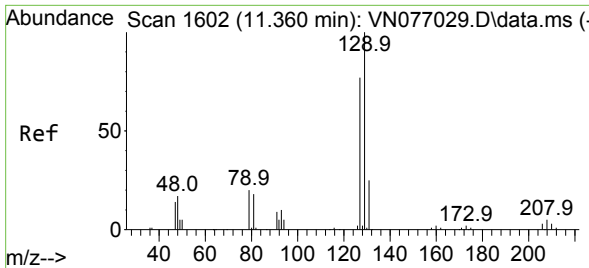
Tgt Ion: 63 Resp: 8635
 Ion Ratio Lower Upper
 63 100
 65 469.8 25.5 38.3#



#50
 Toluene-d8
 Concen: 49.756 ug/l
 RT: 10.572 min Scan# 1468
 Delta R.T. -0.000 min
 Lab File: VN077106.D
 Acq: 22 Mar 2023 14:29

Tgt Ion: 98 Resp: 779660
 Ion Ratio Lower Upper
 98 100
 100 64.8 51.6 77.4

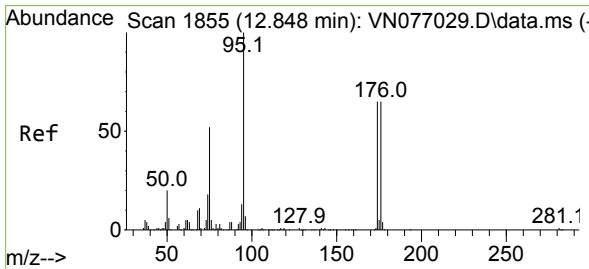
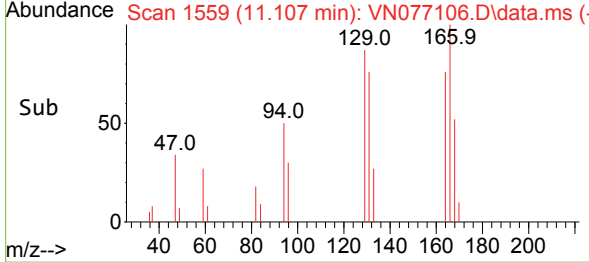
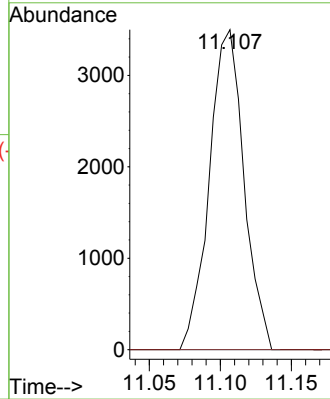
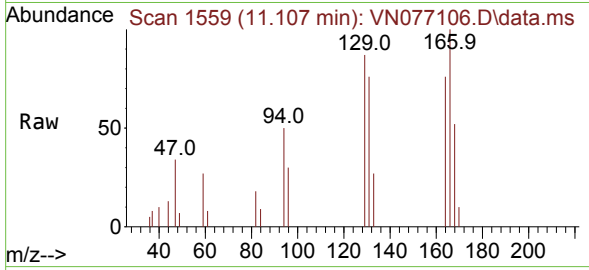




#60
 Dibromochloromethane
 Concen: 1.208 ug/l
 RT: 11.107 min Scan# 1111
 Delta R.T. -0.253 min
 Lab File: VN077106.D
 Acq: 22 Mar 2023 14:29

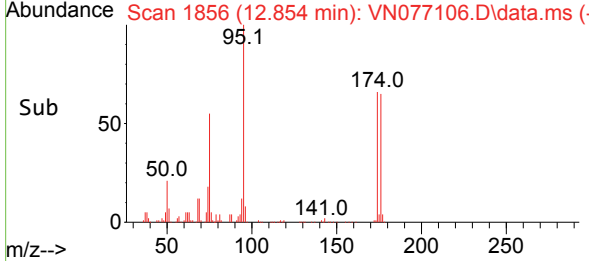
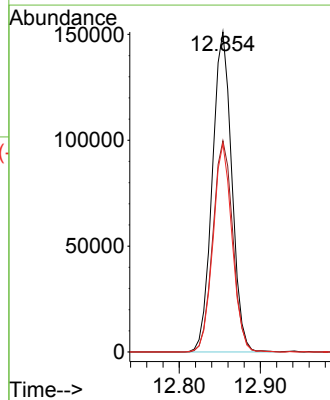
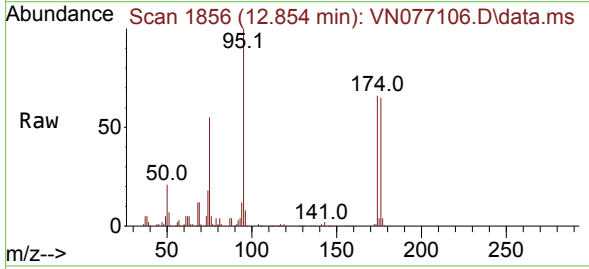
Instrument : MSVOA_N
 ClientSampleId : CB-10-17.5-030823

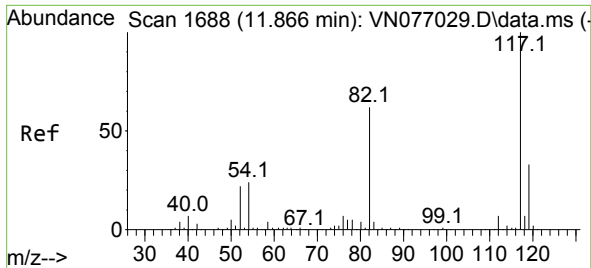
Tgt Ion:129 Resp: 5935
 Ion Ratio Lower Upper
 129 100
 127 0.0 38.6 115.7#



#62
 4-Bromofluorobenzene
 Concen: 45.515 ug/l
 RT: 12.854 min Scan# 1856
 Delta R.T. 0.006 min
 Lab File: VN077106.D
 Acq: 22 Mar 2023 14:29

Tgt Ion: 95 Resp: 252023
 Ion Ratio Lower Upper
 95 100
 174 67.4 0.0 136.6
 176 63.9 0.0 130.0



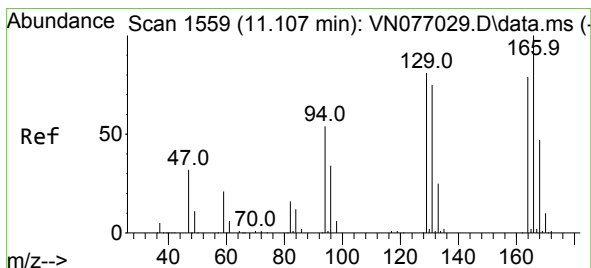
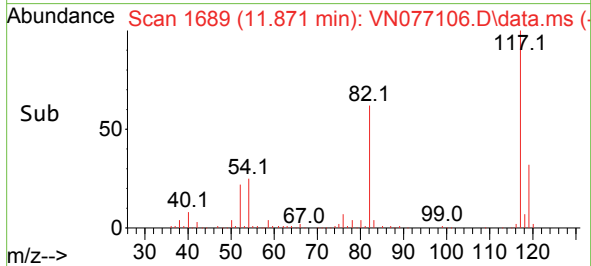
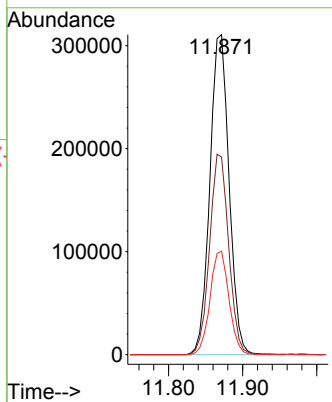
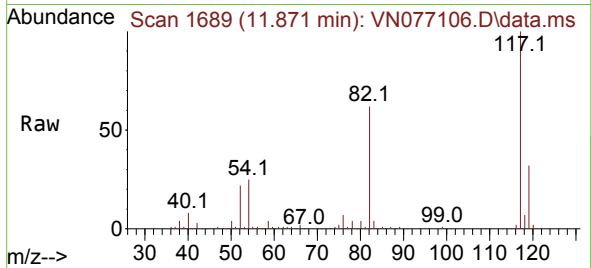


#63
 Chlorobenzene-d5
 Concen: 50.000 ug/l
 RT: 11.871 min Scan# 117
 Delta R.T. 0.005 min
 Lab File: VN077106.D
 Acq: 22 Mar 2023 14:29

Instrument : MSVOA_N
 ClientSampleId : CB-10-17.5-030823

Tgt Ion:117 Resp: 559335

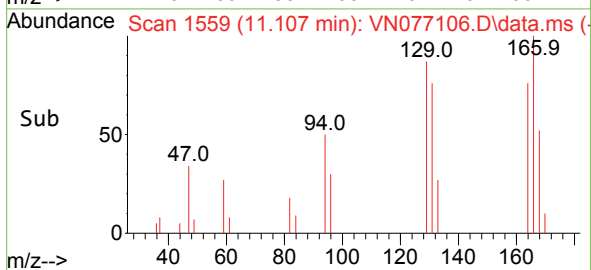
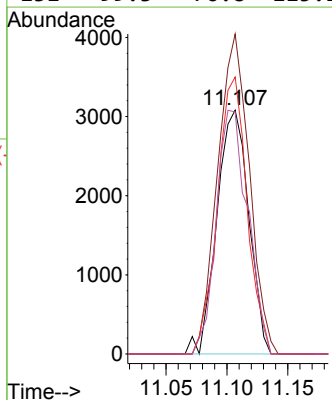
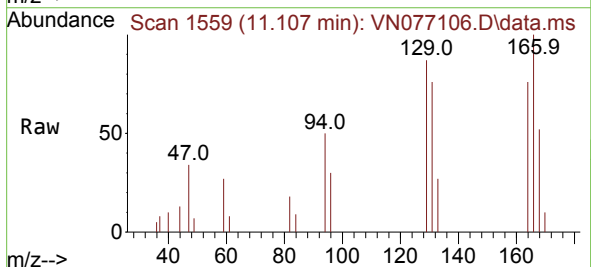
Ion	Ratio	Lower	Upper
117	100		
82	61.7	49.4	74.0
119	32.4	26.5	39.7

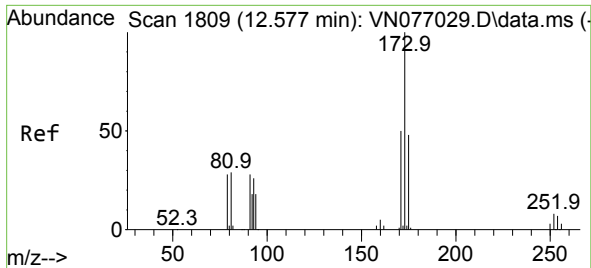


#64
 Tetrachloroethene
 Concen: 1.490 ug/l
 RT: 11.107 min Scan# 1559
 Delta R.T. -0.000 min
 Lab File: VN077106.D
 Acq: 22 Mar 2023 14:29

Tgt Ion:164 Resp: 5595

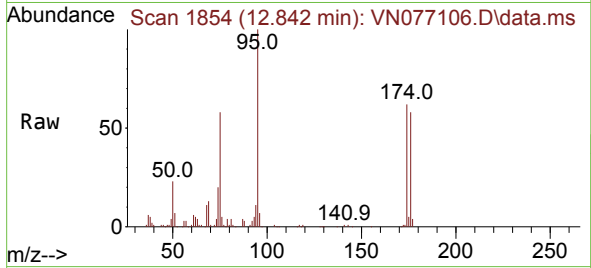
Ion	Ratio	Lower	Upper
164	100		
166	131.3	101.9	152.9
129	113.6	82.6	123.8
131	99.3	76.8	115.2



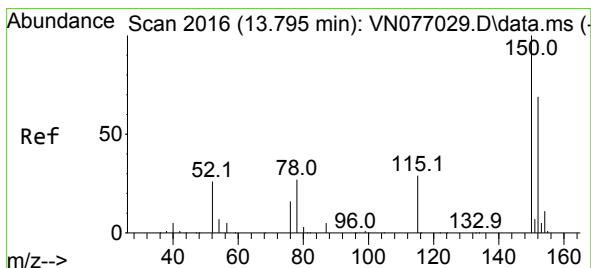
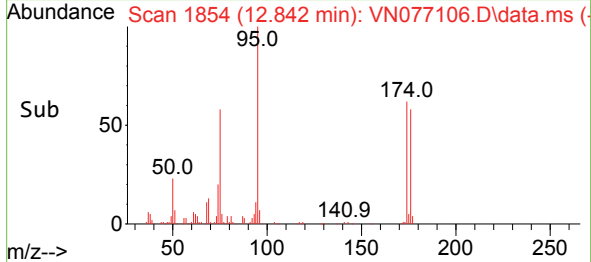
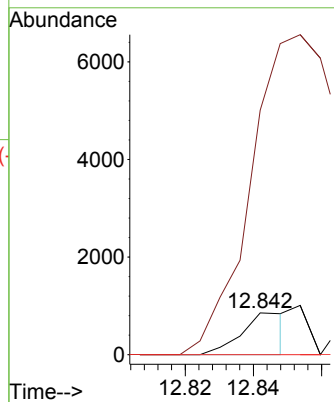


#71
 Bromoform
 Concen: 0.244 ug/l
 RT: 12.842 min Scan# 1809
 Delta R.T. 0.265 min
 Lab File: VN077106.D
 Acq: 22 Mar 2023 14:29

Instrument : MSVOA_N
 ClientSampleId : CB-10-17.5-030823

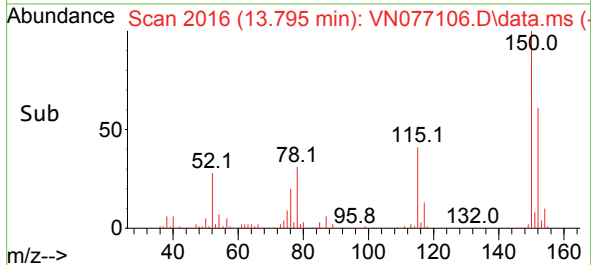
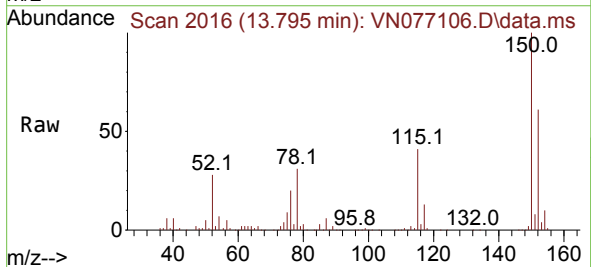
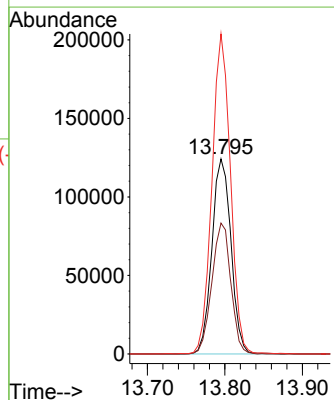


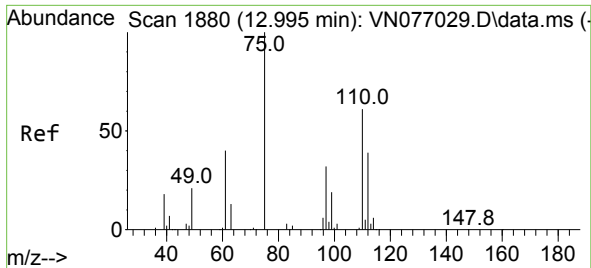
Tgt Ion:173 Resp: 786
 Ion Ratio Lower Upper
 173 100
 175 0.0 24.5 73.5#
 254 0.0 0.1 0.1#



#72
 1,4-Dichlorobenzene-d4
 Concen: 50.000 ug/l
 RT: 13.795 min Scan# 2016
 Delta R.T. -0.000 min
 Lab File: VN077106.D
 Acq: 22 Mar 2023 14:29

Tgt Ion:152 Resp: 212838
 Ion Ratio Lower Upper
 152 100
 115 66.5 31.9 95.7
 150 159.0 0.0 348.0

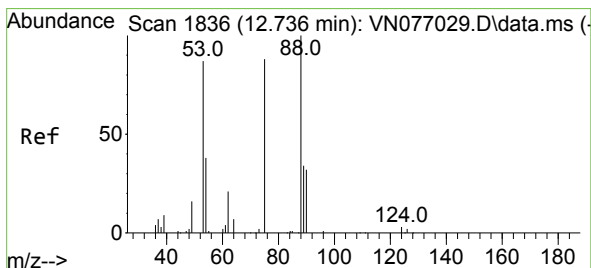
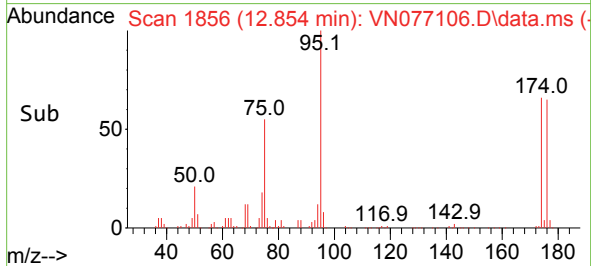
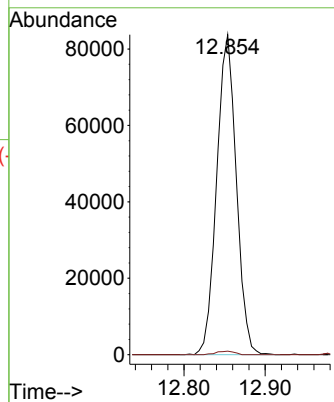
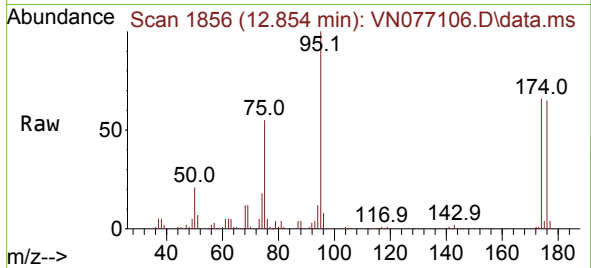




#76
 1,2,3-Trichloropropane
 Concen: 25.555 ug/l
 RT: 12.854 min Scan# 1856
 Delta R.T. -0.141 min
 Lab File: VN077106.D
 Acq: 22 Mar 2023 14:29

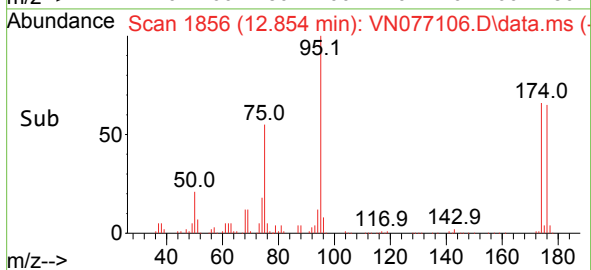
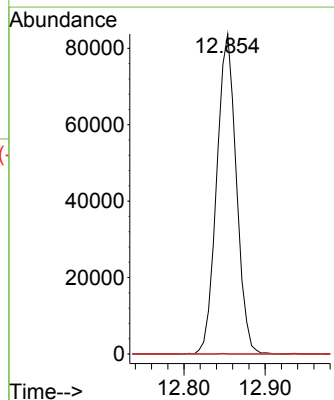
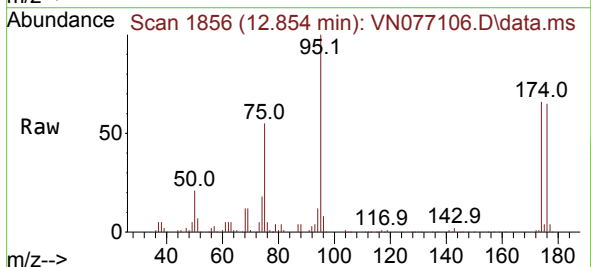
Instrument : MSVOA_N
 ClientSampleId : CB-10-17.5-030823

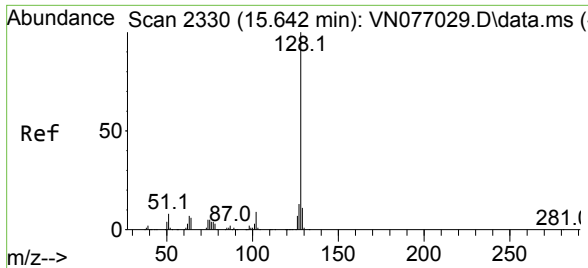
Tgt Ion: 75 Resp: 140687
 Ion Ratio Lower Upper
 75 100
 77 1.0 107.3 322.0#



#81
 trans-1,4-Dichloro-2-butene
 Concen: 70.341 ug/l
 RT: 12.854 min Scan# 1856
 Delta R.T. 0.118 min
 Lab File: VN077106.D
 Acq: 22 Mar 2023 14:29

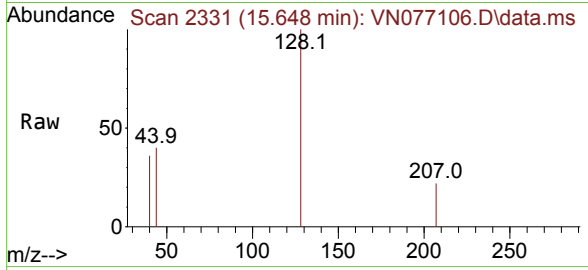
Tgt Ion: 75 Resp: 140687
 Ion Ratio Lower Upper
 75 100
 53 0.0 80.8 121.2#
 89 0.0 34.2 51.4#





#95
 Naphthalene
 Concen: 2.038 ug/l
 RT: 15.648 min Scan# 21
 Delta R.T. 0.006 min
 Lab File: VN077106.D
 Acq: 22 Mar 2023 14:29

Instrument : MSVOA_N
 ClientSampleId : CB-10-17.5-030823



Tgt Ion:128 Resp: 1858

Ion	Ratio	Lower	Upper
128	100		
127	3.2	10.0	15.0#
129	3.7	8.6	13.0#

