

Data Path : Z:\voasrv\HPCHEM1\MSVOA_N\Data\VN032223\
 Data File : VN077118.D
 Acq On : 22 Mar 2023 19:26
 Operator : JC\MD
 Sample : 01849-07
 Misc : 10.92 g/5.0mL/100uL/5.0mL/MSVOA_N/MEOH
 ALS Vial : 24 Sample Multiplier: 1

Instrument :
 MSVOA_N
 ClientSampleId :

Quant Time: Mar 22 23:28:18 2023
 Quant Method : Z:\voasrv\HPCHEM1\MSVOA_N\methods\82N031723W.M
 Quant Title : SW846 8260
 QLast Update : Mon Mar 20 08:50:30 2023
 Response via : Initial Calibration

Compound	R.T.	QIon	Response	Conc	Units	Dev(Min)

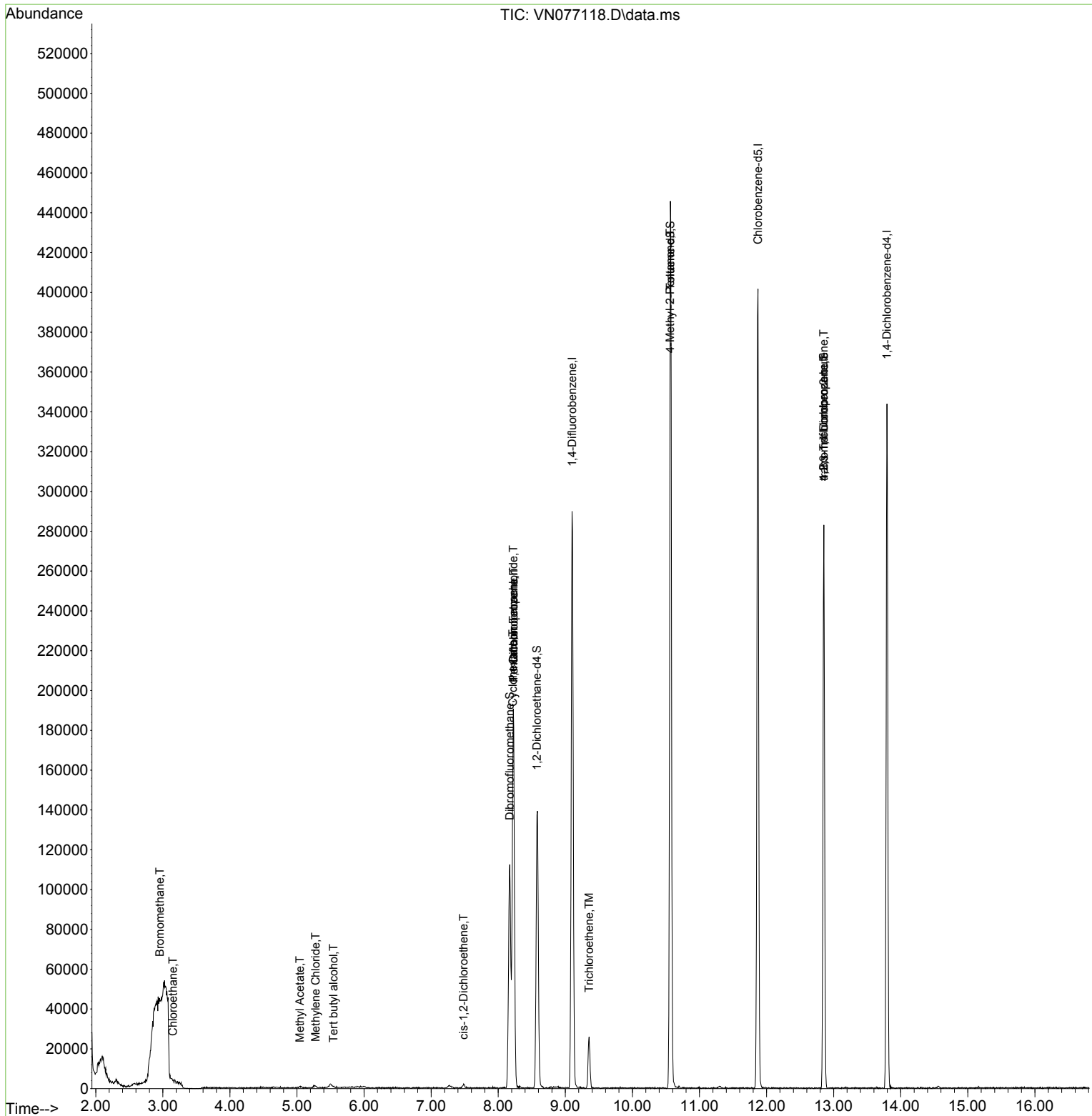
Internal Standards						
1) Pentafluorobenzene	8.231	168	121696	50.000	ug/l	0.00
34) 1,4-Difluorobenzene	9.101	114	230448	50.000	ug/l	0.00
63) Chlorobenzene-d5	11.872	117	204960	50.000	ug/l	0.00
72) 1,4-Dichlorobenzene-d4	13.795	152	78218	50.000	ug/l	0.00
System Monitoring Compounds						
33) 1,2-Dichloroethane-d4	8.578	65	114130	58.713	ug/l	0.00
Spiked Amount	50.000	Range 74 - 125	Recovery	=	117.420%	
35) Dibromofluoromethane	8.172	113	77945	48.297	ug/l	0.00
Spiked Amount	50.000	Range 75 - 124	Recovery	=	96.600%	
50) Toluene-d8	10.566	98	296043	51.353	ug/l	0.00
Spiked Amount	50.000	Range 86 - 113	Recovery	=	102.700%	
62) 4-Bromofluorobenzene	12.854	95	87576	42.990	ug/l	0.00
Spiked Amount	50.000	Range 83 - 123	Recovery	=	85.980%	
Target Compounds						
						Qvalue
5) Bromomethane	2.954	94	341	0.381	ug/l #	3
6) Chloroethane	3.149	64	246	0.294	ug/l #	42
11) Tert butyl alcohol	5.543	59	381	1.345	ug/l #	72
18) Methyl Acetate	5.043	43	1024	0.314	ug/l #	90
20) Methylene Chloride	5.278	84	822	0.437	ug/l #	16
27) cis-1,2-Dichloroethene	7.484	96	547	0.298	ug/l	53
31) Cyclohexane	8.219	56	4250	1.336	ug/l #	38
36) 1,1-Dichloropropene	8.231	75	14019	5.562	ug/l #	43
38) Carbon Tetrachloride	8.225	117	14995	6.107	ug/l #	16
44) Trichloroethene	9.354	130	7677	4.372	ug/l	98
51) 4-Methyl-2-Pentanone	10.560	43	1447	0.552	ug/l #	1
76) 1,2,3-Trichloropropane	12.854	75	54887	27.129	ug/l #	1
81) trans-1,4-Dichloro-2-b...	12.854	75	54887	74.673	ug/l #	10

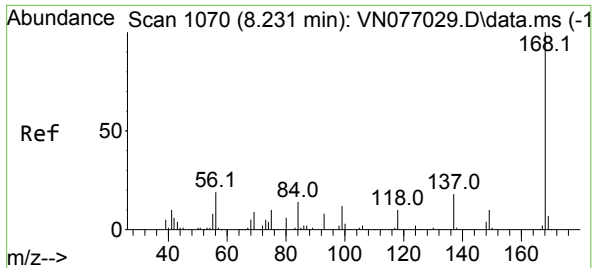
(#) = qualifier out of range (m) = manual integration (+) = signals summed

Data Path : Z:\voasrv\HPCHEM1\MSVOA_N\Data\VN032223\
 Data File : VN077118.D
 Acq On : 22 Mar 2023 19:26
 Operator : JC\MD
 Sample : 01849-07
 Misc : 10.92 g/5.0mL/100uL/5.0mL/MSVOA_N/MEOH
 ALS Vial : 24 Sample Multiplier: 1

Instrument :
 MSVOA_N
 ClientSampleId :

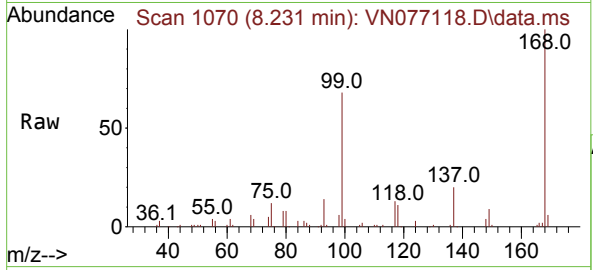
Quant Time: Mar 22 23:28:18 2023
 Quant Method : Z:\voasrv\HPCHEM1\MSVOA_N\methods\82N031723W.M
 Quant Title : SW846 8260
 QLast Update : Mon Mar 20 08:50:30 2023
 Response via : Initial Calibration



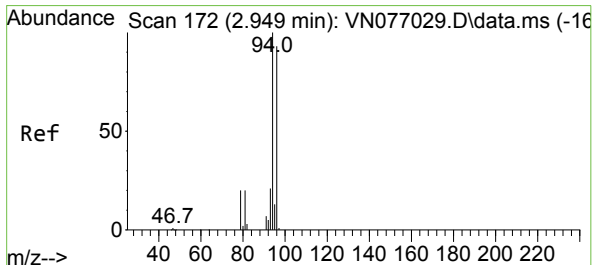
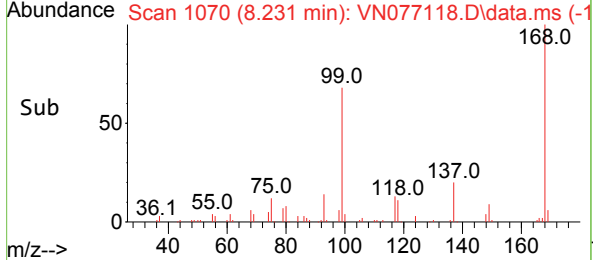
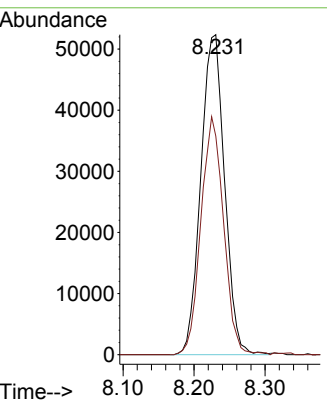


#1
 Pentafluorobenzene
 Concen: 50.000 ug/l
 RT: 8.231 min Scan# 10
 Delta R.T. -0.000 min
 Lab File: VN077118.D
 Acq: 22 Mar 2023 19:26

Instrument : MSVOA_N
 ClientSampleId :

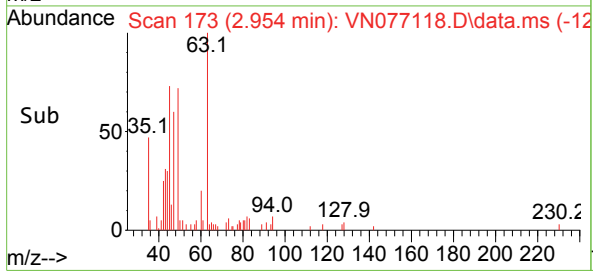
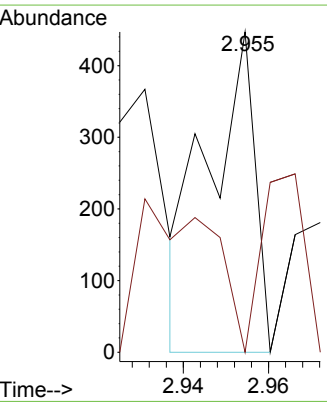
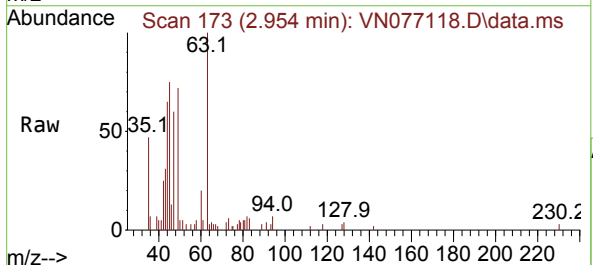


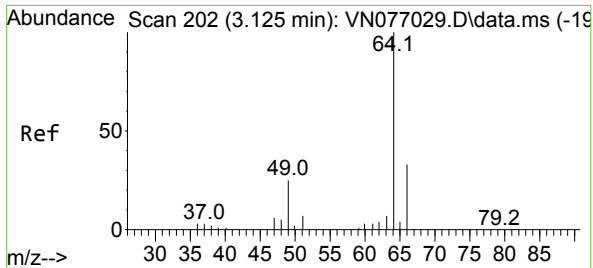
Tgt Ion:168 Resp: 121696
 Ion Ratio Lower Upper
 168 100
 99 68.3 53.9 80.9



#5
 Bromomethane
 Concen: 0.381 ug/l
 RT: 2.954 min Scan# 173
 Delta R.T. 0.006 min
 Lab File: VN077118.D
 Acq: 22 Mar 2023 19:26

Tgt Ion: 94 Resp: 341
 Ion Ratio Lower Upper
 94 100
 96 0.0 74.1 111.1#

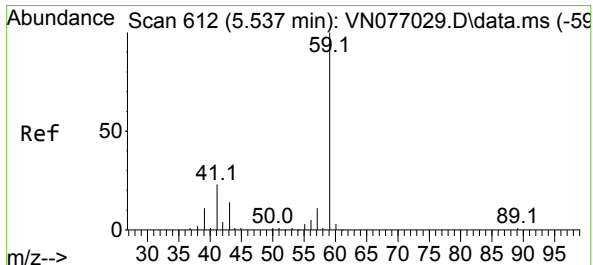
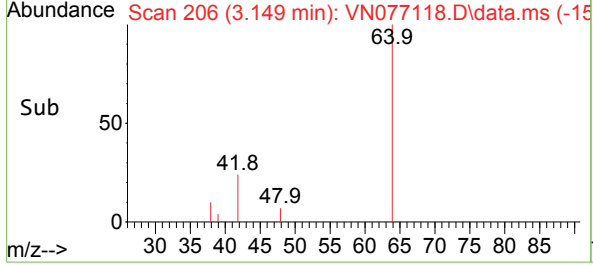
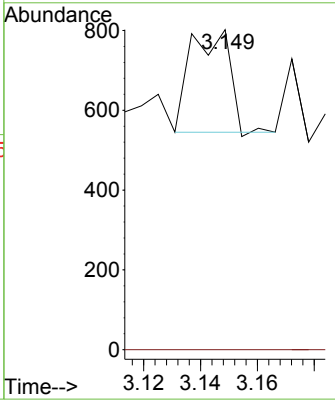
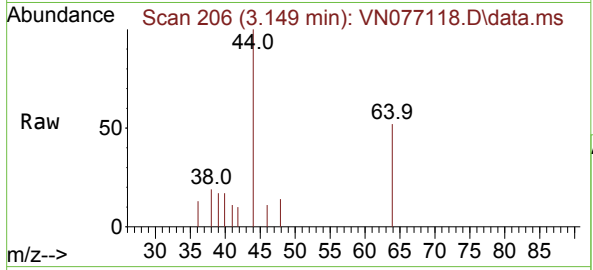




#6
 Chloroethane
 Concen: 0.294 ug/l
 RT: 3.149 min Scan# 206
 Delta R.T. 0.024 min
 Lab File: VN077118.D
 Acq: 22 Mar 2023 19:26

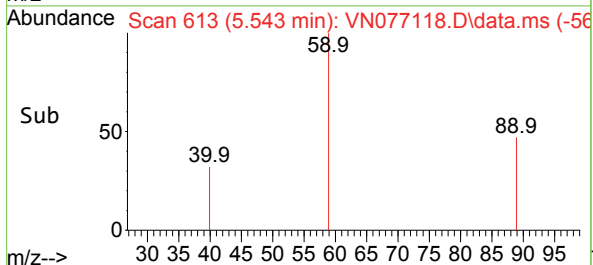
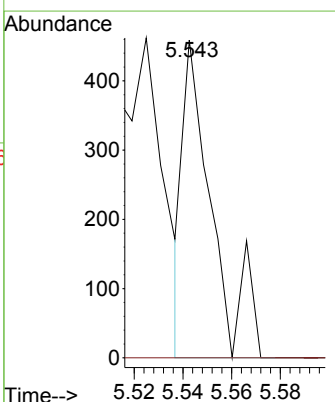
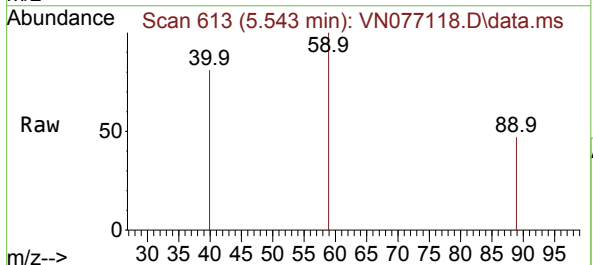
Instrument : MSVOA_N
 ClientSampleId :

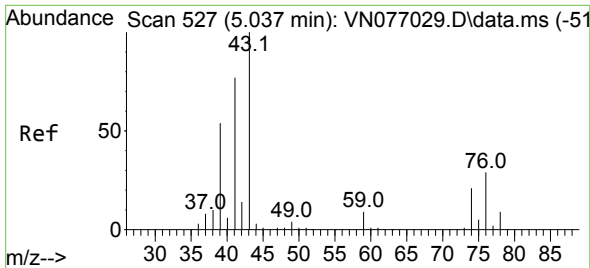
Tgt Ion: 64 Resp: 246
 Ion Ratio Lower Upper
 64 100
 66 0.0 26.3 39.5#



#11
 Tert butyl alcohol
 Concen: 1.345 ug/l
 RT: 5.543 min Scan# 613
 Delta R.T. 0.006 min
 Lab File: VN077118.D
 Acq: 22 Mar 2023 19:26

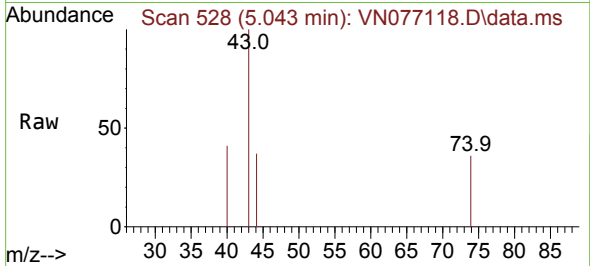
Tgt Ion: 59 Resp: 381
 Ion Ratio Lower Upper
 59 100
 57 0.0 8.6 12.8#



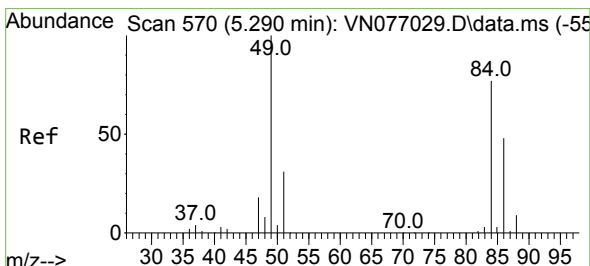
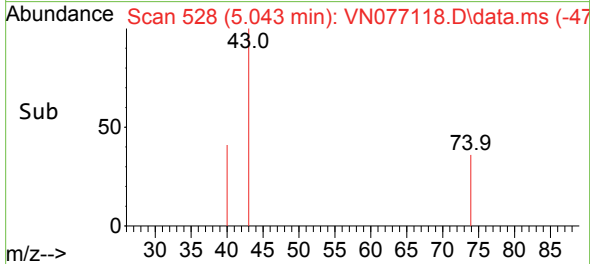
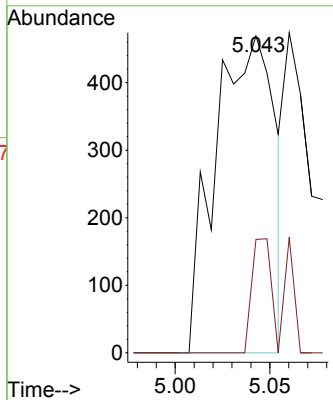


#18
Methyl Acetate
Concen: 0.314 ug/l
RT: 5.043 min Scan# 51
Delta R.T. 0.006 min
Lab File: VN077118.D
Acq: 22 Mar 2023 19:26

Instrument :
MSVOA_N
ClientSampleId :

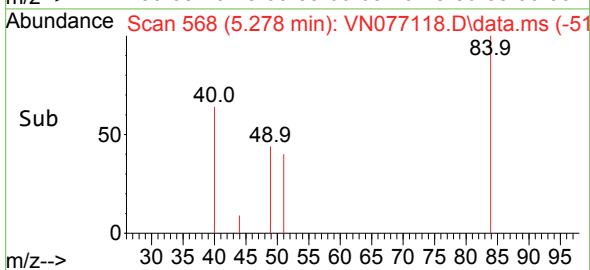
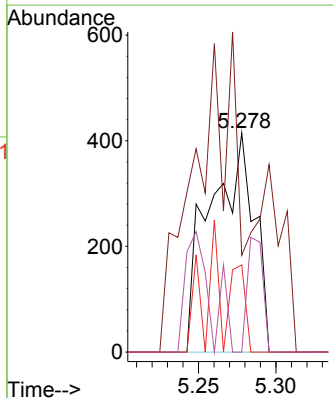
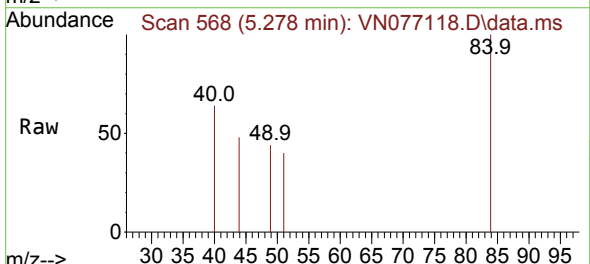


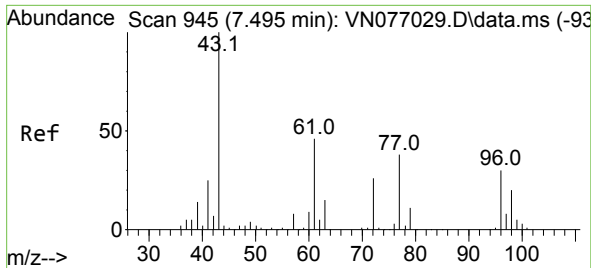
Tgt Ion: 43 Resp: 1024
Ion Ratio Lower Upper
43 100
74 17.5 17.7 26.5#



#20
Methylene Chloride
Concen: 0.437 ug/l
RT: 5.278 min Scan# 568
Delta R.T. -0.012 min
Lab File: VN077118.D
Acq: 22 Mar 2023 19:26

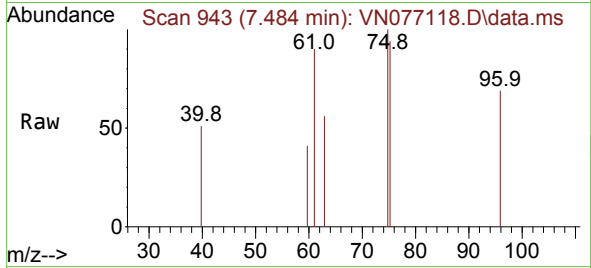
Tgt Ion: 84 Resp: 822
Ion Ratio Lower Upper
84 100
49 0.0 103.8 155.6#
51 39.8 32.3 48.5
86 0.0 49.9 74.9#





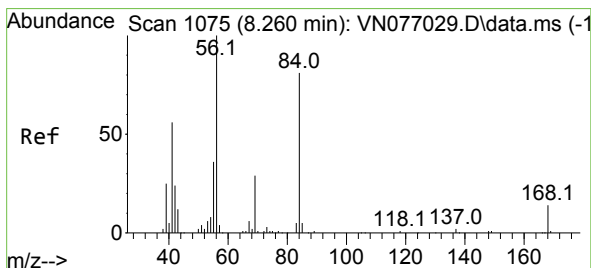
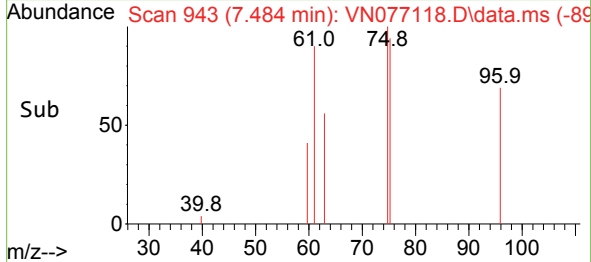
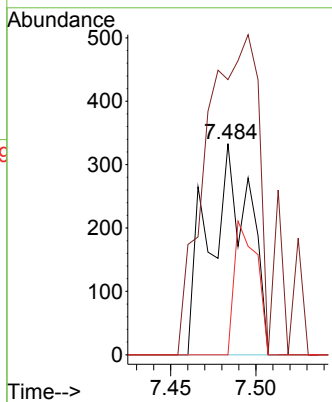
#27
 cis-1,2-Dichloroethene
 Concen: 0.298 ug/l
 RT: 7.484 min Scan# 943
 Delta R.T. -0.011 min
 Lab File: VN077118.D
 Acq: 22 Mar 2023 19:26

Instrument :
 MSVOA_N
 ClientSampleId :



Tgt Ion: 96 Resp: 547

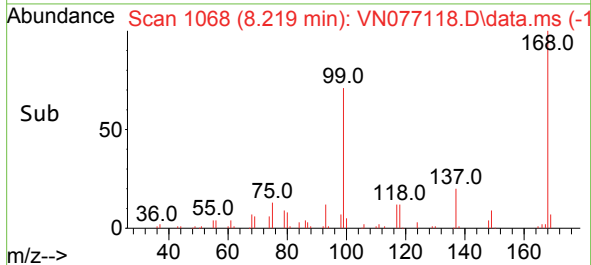
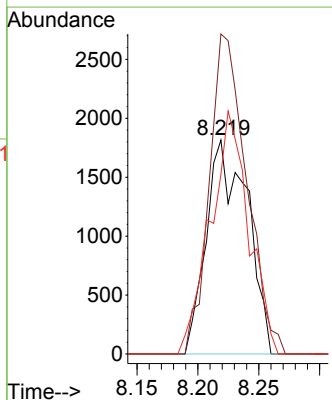
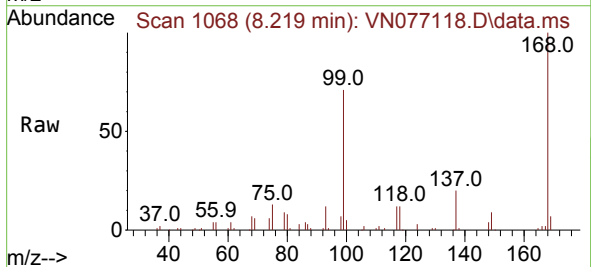
Ion	Ratio	Lower	Upper
96	100		
61	224.1	0.0	315.4
98	34.9	0.0	128.6

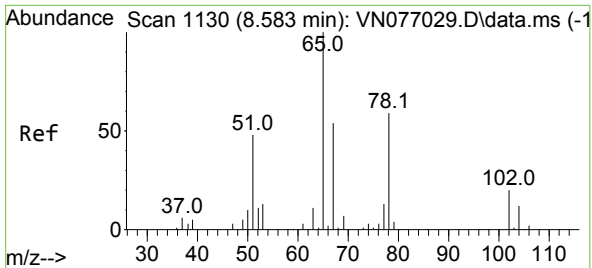


#31
 Cyclohexane
 Concen: 1.336 ug/l
 RT: 8.219 min Scan# 1068
 Delta R.T. -0.041 min
 Lab File: VN077118.D
 Acq: 22 Mar 2023 19:26

Tgt Ion: 56 Resp: 4250

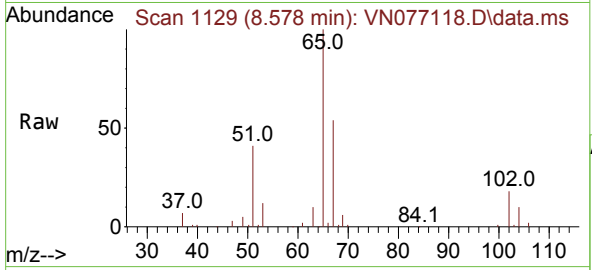
Ion	Ratio	Lower	Upper
56	100		
69	149.6	22.8	34.2#
84	83.9	64.7	97.1



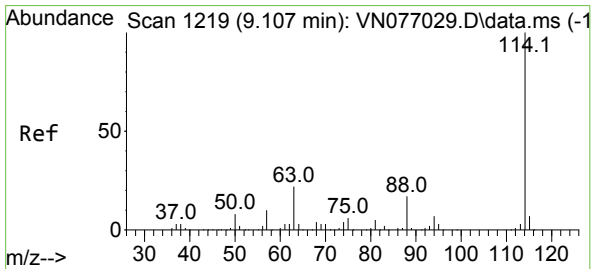
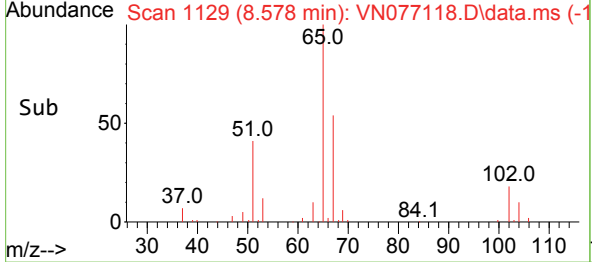
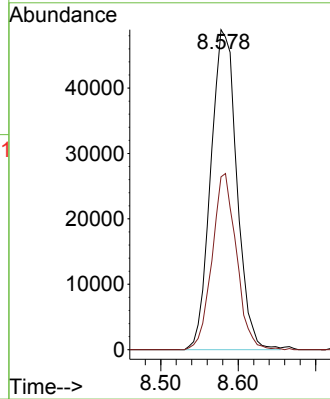


#33
 1,2-Dichloroethane-d4
 Concen: 58.713 ug/l
 RT: 8.578 min Scan# 1118
 Delta R.T. -0.005 min
 Lab File: VN077118.D
 Acq: 22 Mar 2023 19:26

Instrument :
 MSVOA_N
 ClientSampleId :

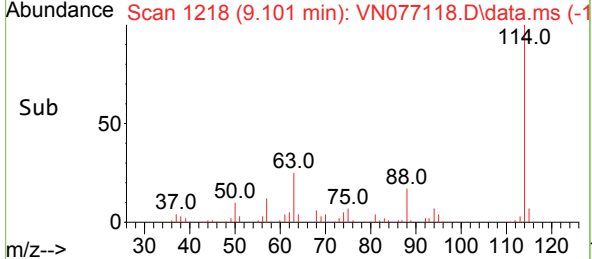
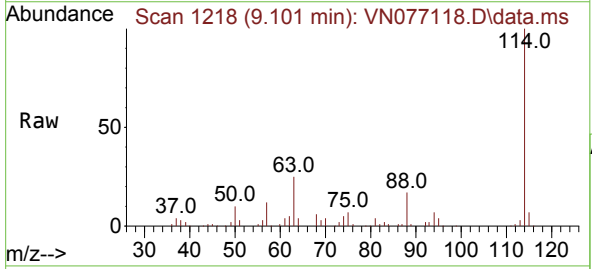
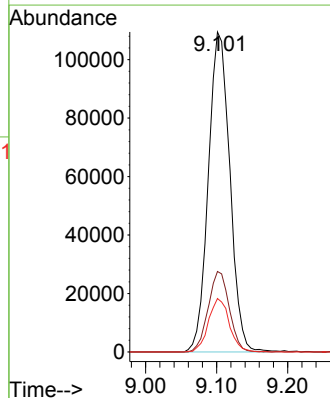


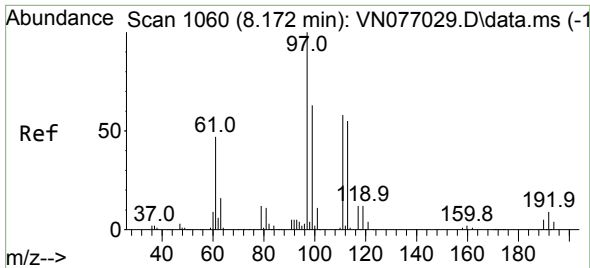
Tgt Ion: 65 Resp: 114130
 Ion Ratio Lower Upper
 65 100
 67 51.4 0.0 105.2



#34
 1,4-Difluorobenzene
 Concen: 50.000 ug/l
 RT: 9.101 min Scan# 1218
 Delta R.T. -0.006 min
 Lab File: VN077118.D
 Acq: 22 Mar 2023 19:26

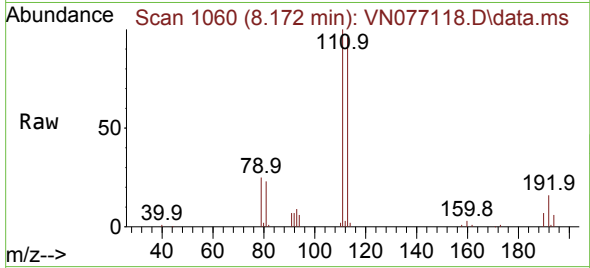
Tgt Ion: 114 Resp: 230448
 Ion Ratio Lower Upper
 114 100
 63 25.2 0.0 44.6
 88 16.7 0.0 33.8



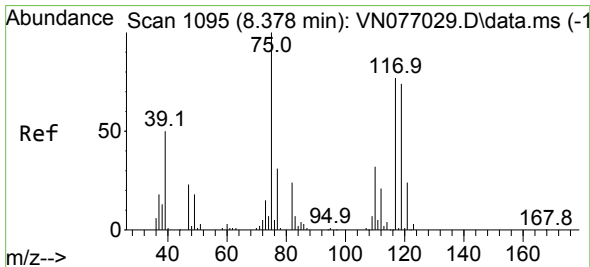
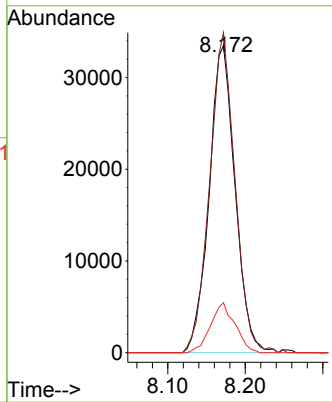
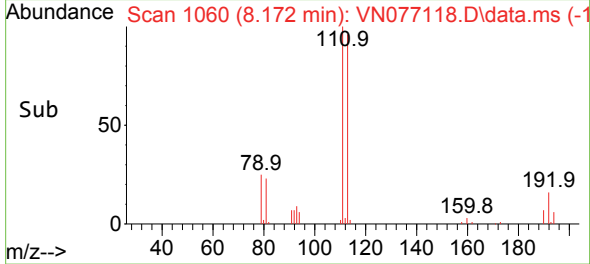


#35
 Dibromofluoromethane
 Concen: 48.297 ug/l
 RT: 8.172 min Scan# 1060
 Delta R.T. 0.000 min
 Lab File: VN077118.D
 Acq: 22 Mar 2023 19:26

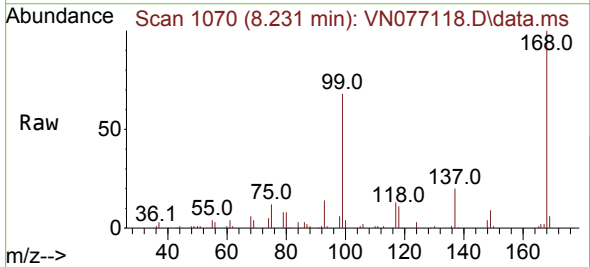
Instrument : MSVOA_N
 ClientSampleId :



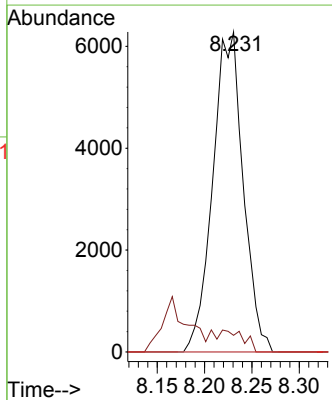
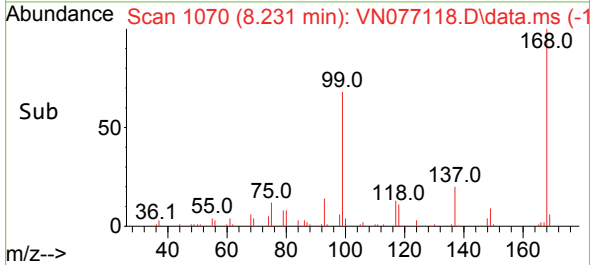
Tgt Ion: 113 Resp: 77945
 Ion Ratio Lower Upper
 113 100
 111 102.1 82.2 123.2
 192 15.4 13.0 19.6

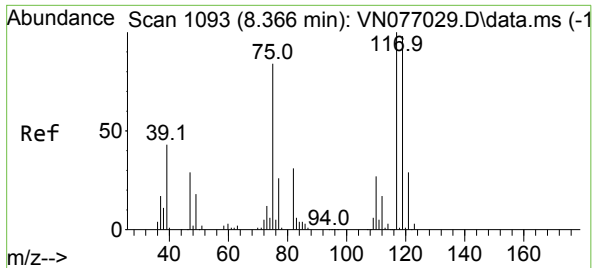


#36
 1,1-Dichloropropene
 Concen: 5.562 ug/l
 RT: 8.231 min Scan# 1070
 Delta R.T. -0.147 min
 Lab File: VN077118.D
 Acq: 22 Mar 2023 19:26



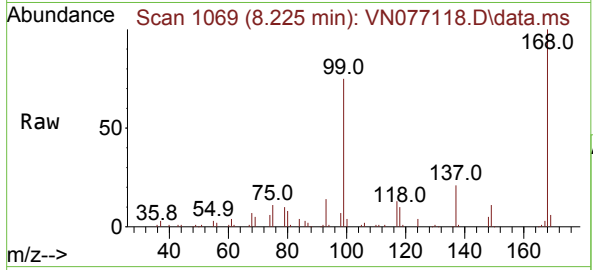
Tgt Ion: 75 Resp: 14019
 Ion Ratio Lower Upper
 75 100
 110 0.0 15.9 47.7#
 77 0.0 24.3 36.5#



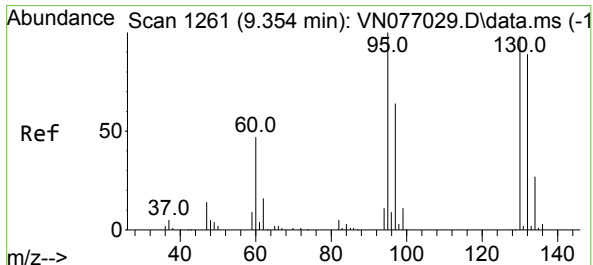
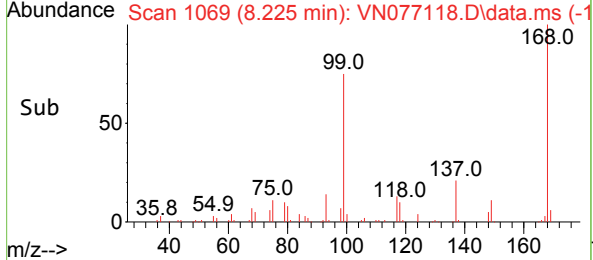
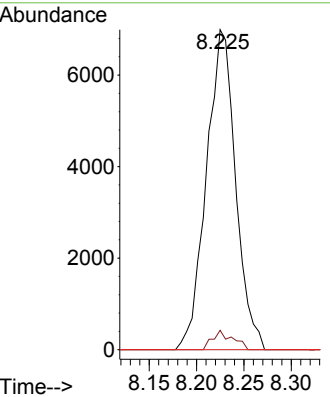


#38
 Carbon Tetrachloride
 Concen: 6.107 ug/l
 RT: 8.225 min Scan# 1069
 Delta R.T. -0.141 min
 Lab File: VN077118.D
 Acq: 22 Mar 2023 19:26

Instrument : MSVOA_N
 ClientSampleId :

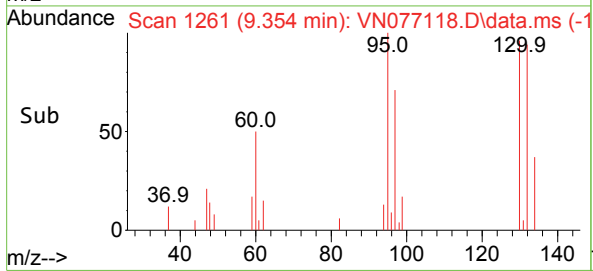
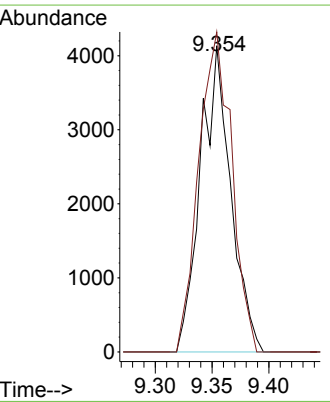
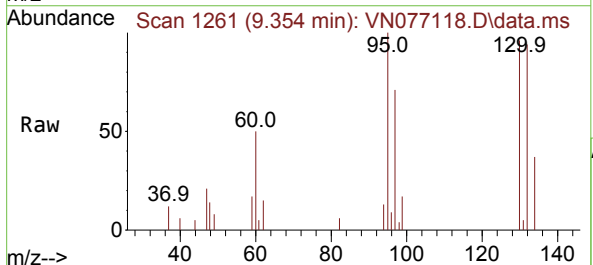


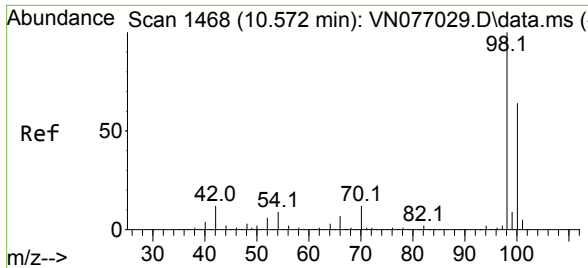
Tgt Ion:117 Resp: 14995
 Ion Ratio Lower Upper
 117 100
 119 6.1 78.2 117.2#
 121 0.0 23.2 34.8#



#44
 Trichloroethene
 Concen: 4.372 ug/l
 RT: 9.354 min Scan# 1261
 Delta R.T. 0.000 min
 Lab File: VN077118.D
 Acq: 22 Mar 2023 19:26

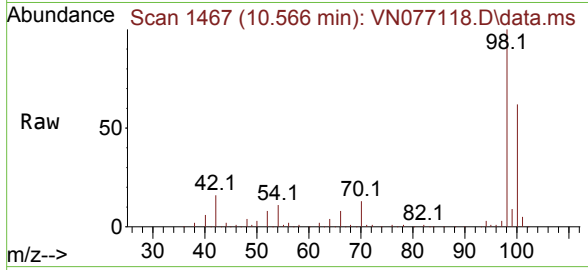
Tgt Ion:130 Resp: 7677
 Ion Ratio Lower Upper
 130 100
 95 104.5 0.0 204.4



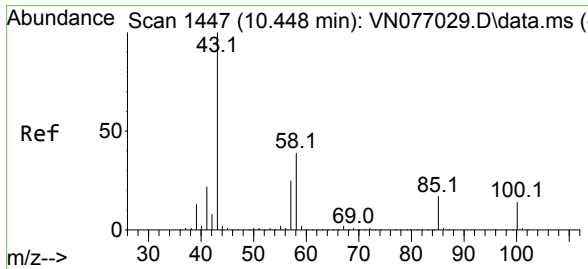
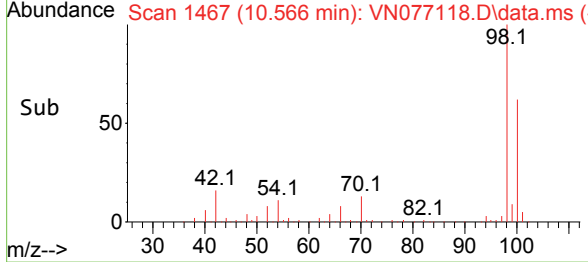
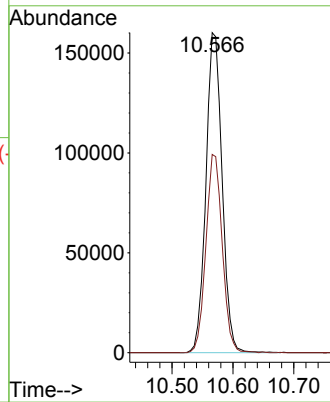


#50
 Toluene-d8
 Concen: 51.353 ug/l
 RT: 10.566 min Scan# 1467
 Delta R.T. -0.006 min
 Lab File: VN077118.D
 Acq: 22 Mar 2023 19:26

Instrument : MSVOA_N
 ClientSampleId :

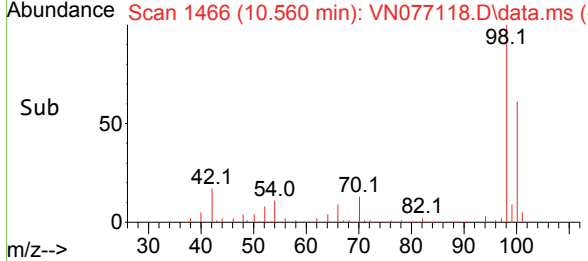
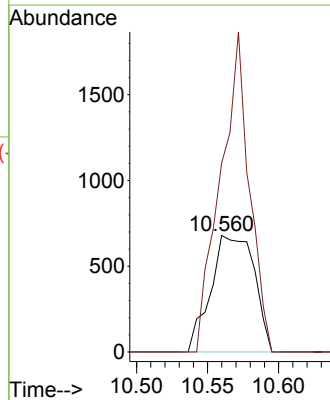
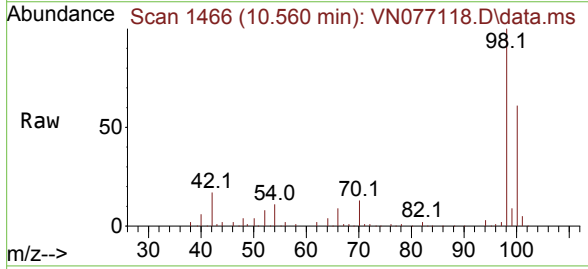


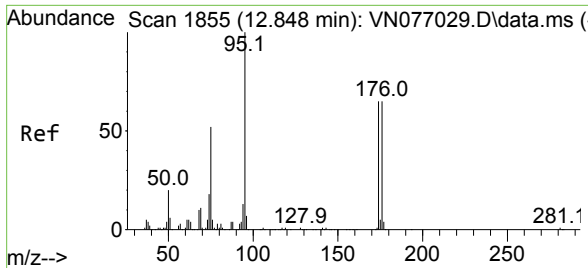
Tgt Ion: 98 Resp: 296043
 Ion Ratio Lower Upper
 98 100
 100 62.6 51.6 77.4



#51
 4-Methyl-2-Pentanone
 Concen: 0.552 ug/l
 RT: 10.560 min Scan# 1466
 Delta R.T. 0.112 min
 Lab File: VN077118.D
 Acq: 22 Mar 2023 19:26

Tgt Ion: 43 Resp: 1447
 Ion Ratio Lower Upper
 43 100
 58 182.6 31.1 46.7#

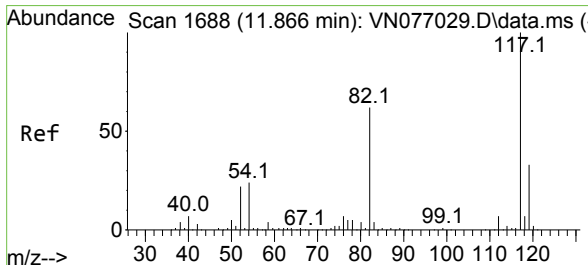
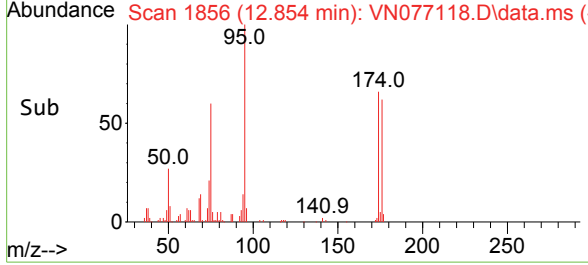
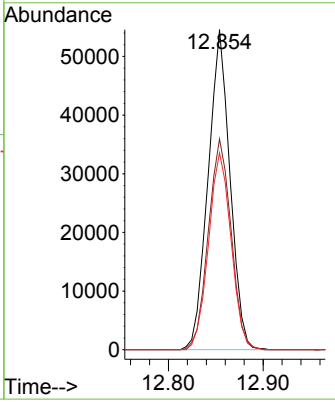
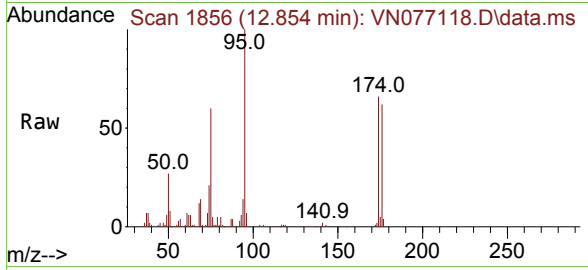




#62
 4-Bromofluorobenzene
 Concen: 42.990 ug/l
 RT: 12.854 min Scan# 1856
 Delta R.T. 0.006 min
 Lab File: VN077118.D
 Acq: 22 Mar 2023 19:26

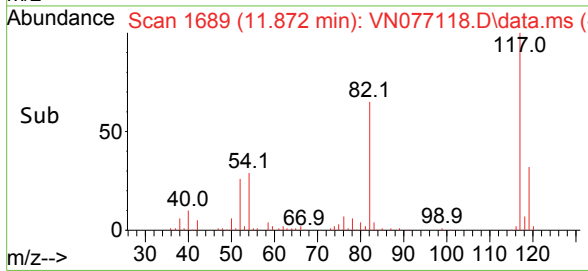
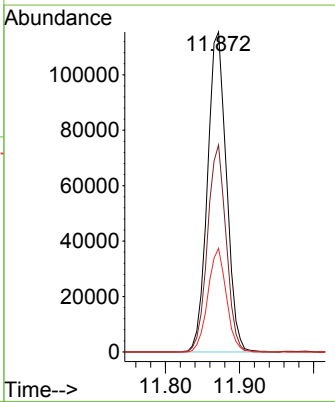
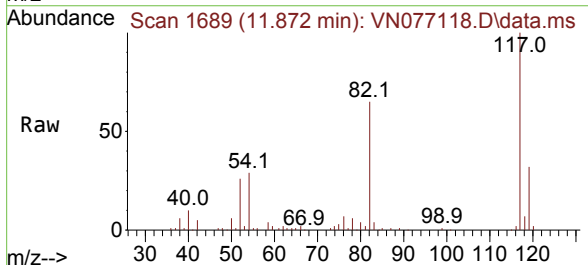
Instrument : MSVOA_N
 ClientSampleId :

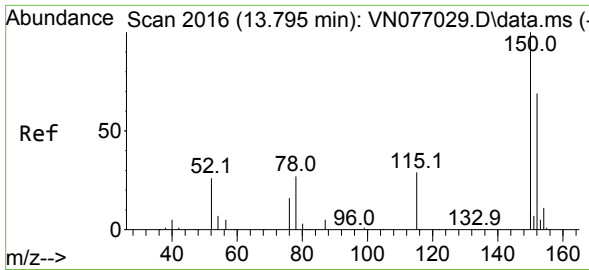
Tgt Ion	Resp	Lower	Upper
95	87576	100	
174	68.4	0.0	136.6
176	63.3	0.0	130.0



#63
 Chlorobenzene-d5
 Concen: 50.000 ug/l
 RT: 11.872 min Scan# 1689
 Delta R.T. 0.006 min
 Lab File: VN077118.D
 Acq: 22 Mar 2023 19:26

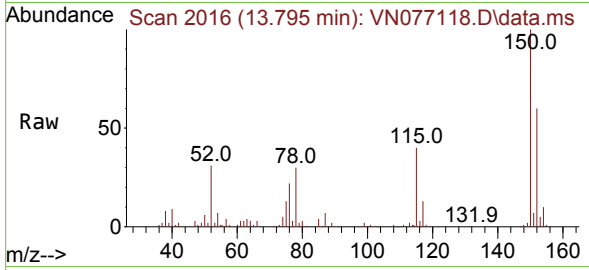
Tgt Ion	Resp	Lower	Upper
117	204960	100	
82	64.7	49.4	74.0
119	32.4	26.5	39.7



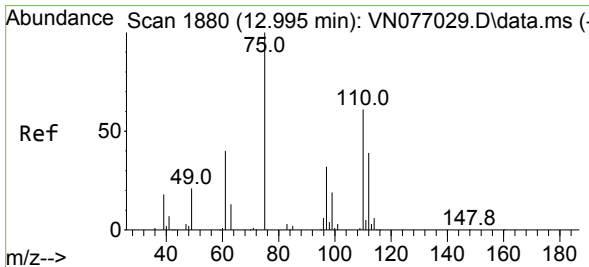
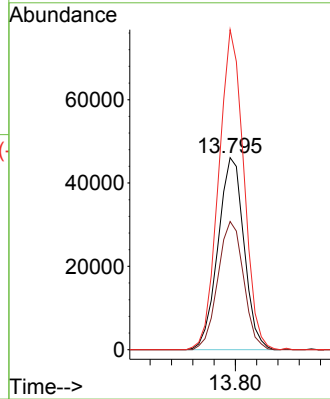
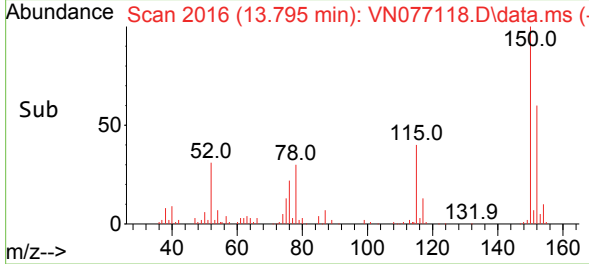


#72
 1,4-Dichlorobenzene-d4
 Concen: 50.000 ug/l
 RT: 13.795 min Scan# 20
 Delta R.T. -0.000 min
 Lab File: VN077118.D
 Acq: 22 Mar 2023 19:26

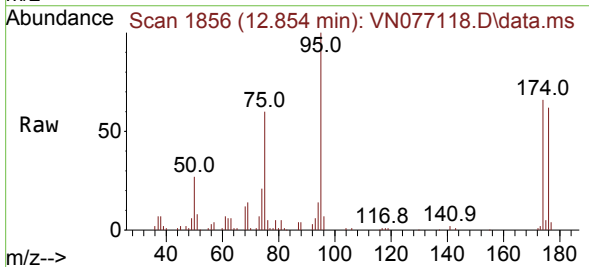
Instrument : MSVOA_N
 ClientSampleId :



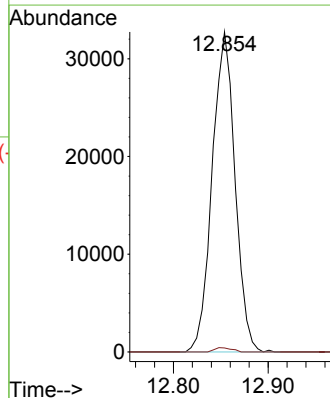
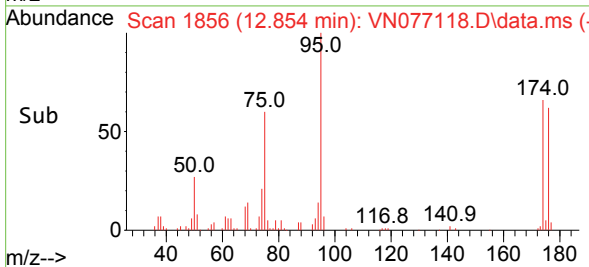
Tgt Ion:152 Resp: 78218
 Ion Ratio Lower Upper
 152 100
 115 65.9 31.9 95.7
 150 160.4 0.0 348.0

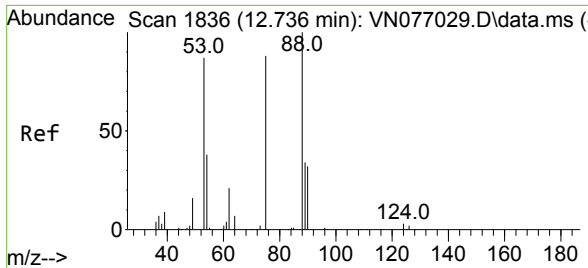


#76
 1,2,3-Trichloropropane
 Concen: 27.129 ug/l
 RT: 12.854 min Scan# 1856
 Delta R.T. -0.141 min
 Lab File: VN077118.D
 Acq: 22 Mar 2023 19:26



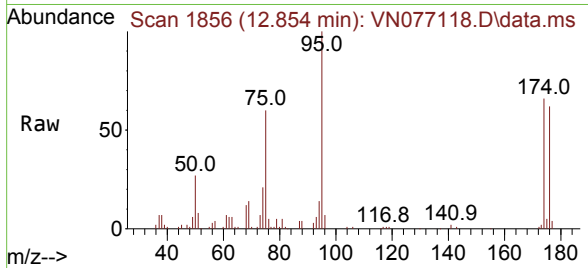
Tgt Ion: 75 Resp: 54887
 Ion Ratio Lower Upper
 75 100
 77 1.0 107.3 322.0#





#81
 trans-1,4-Dichloro-2-butene
 Concen: 74.673 ug/l
 RT: 12.854 min Scan# 1836
 Delta R.T. 0.118 min
 Lab File: VN077118.D
 Acq: 22 Mar 2023 19:26

Instrument :
 MSVOA_N
 ClientSampleId :



Tgt Ion: 75 Resp: 54887
 Ion Ratio Lower Upper
 75 100
 53 0.0 80.8 121.2#
 89 0.0 34.2 51.4#

