

Data Path : Z:\voasrv\HPCHEM1\MSVOA_N\Data\VN032223\
 Data File : VN077122.D
 Acq On : 23 Mar 2023 02:39
 Operator : JC\MD
 Sample : VN0322WBL02
 Misc : 5.0mL/MSVOA_N/WATER
 ALS Vial : 31 Sample Multiplier: 1

Instrument :
 MSVOA_N
 ClientSampleId :
 VN0322WBL02

Integration Parameters: RTEINT.P

Integrator: RTE
 Smoothing : ON Filtering: 5
 Sampling : 1 Min Area: 3 % of largest Peak
 Start Thrs: 0.2 Max Peaks: 100
 Stop Thrs : 0 Peak Location: TOP

If leading or trailing edge < 100 prefer < Baseline drop else tangent >
 Peak separation: 5

Method : Z:\voasrv\HPCHEM1\MSVOA_N\methods\82N031723W.M
 Title : SW846 8260

Signal : TIC: VN077122.D\data.ms

peak #	R.T. min	first scan	max scan	last scan	PK TY	peak height	corr. area	corr. % max.	% of total
1	2.825	144	151	162	rVB5	22216	66146	2.79%	0.544%
2	8.177	1051	1061	1065	rBV	327974	800484	33.77%	6.580%
3	8.230	1065	1070	1085	rVB	587148	1327933	56.02%	10.916%
4	8.583	1120	1130	1143	rBV	369590	857033	36.16%	7.045%
5	9.107	1210	1219	1232	rBV	873573	1772480	74.78%	14.571%
6	10.571	1457	1468	1480	rBV	1307003	2370412	100.00%	19.486%
7	11.871	1680	1689	1702	rBV	1125485	2016488	85.07%	16.577%
8	12.854	1848	1856	1868	rBV	812012	1388650	58.58%	11.416%
9	13.795	2009	2016	2028	rVB	926050	1564920	66.02%	12.865%

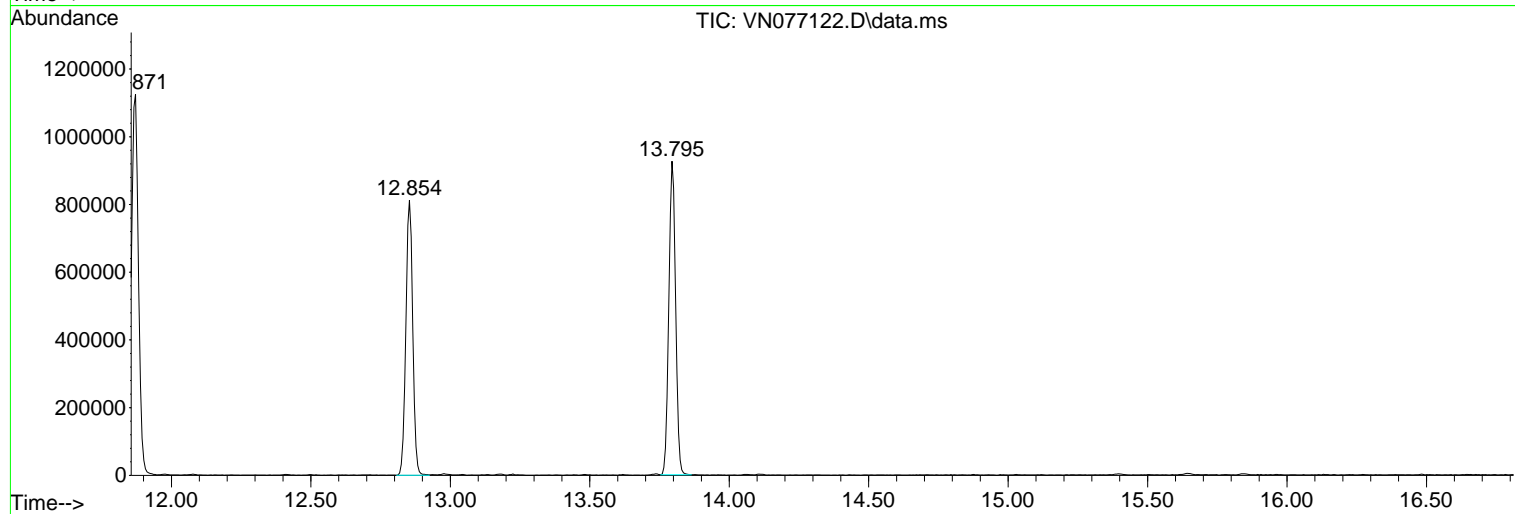
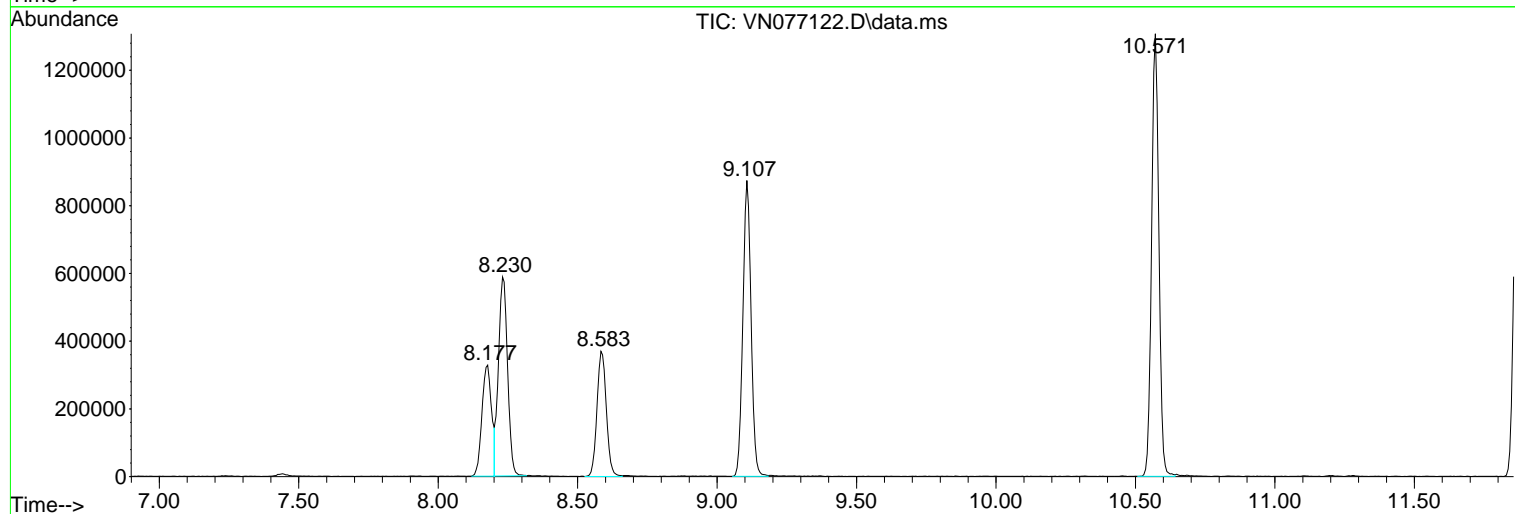
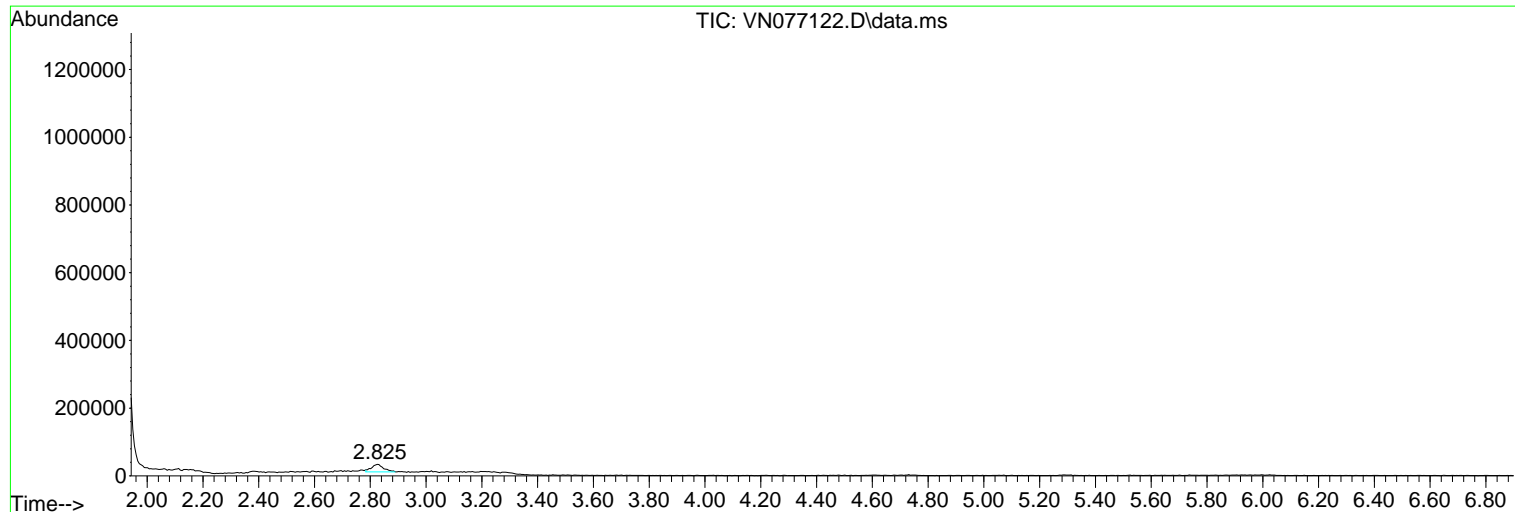
Sum of corrected areas: 12164546

Data Path : Z:\voasrv\HPCHEM1\MSVOA_N\Data\VN032223\
 Data File : VN077122.D
 Acq On : 23 Mar 2023 02:39
 Operator : JC\MD
 Sample : VN0322WBL02
 Misc : 5.0mL/MSVOA_N/WATER
 ALS Vial : 31 Sample Multiplier: 1

Instrument :
 MSVOA_N
 ClientSampleId :
 VN0322WBL02

Quant Method : Z:\voasrv\HPCHEM1\MSVOA_N\methods\82N031723W.M
 Quant Title : SW846 8260

TIC Library : C:\Database\NIST20.L
 TIC Integration Parameters: LSCINT.P



Library Search Compound Report

Data Path : Z:\voasrv\HPCHEM1\MSVOA_N\Data\VN032223\
Data File : VN077122.D
Acq On : 23 Mar 2023 02:39
Operator : JC\MD
Sample : VN0322WBL02
Misc : 5.0mL/MSVOA_N/WATER
ALS Vial : 31 Sample Multiplier: 1

Instrument :
MSVOA_N
ClientSampleId :
VN0322WBL02

Quant Method : Z:\voasrv\HPCHEM1\MSVOA_N\methods\82N031723W.M
Quant Title : SW846 8260

TIC Library : C:\Database\NIST20.L
TIC Integration Parameters: LSCINT.P

No Library Search Compounds Detected

Data Path : Z:\voasrv\HPCHEM1\MSVOA_N\Data\VN032223\
Data File : VN077122.D
Acq On : 23 Mar 2023 02:39
Operator : JC\MD
Sample : VN0322WBL02
Misc : 5.0mL/MSVOA_N/WATER
ALS Vial : 31 Sample Multiplier: 1

Instrument :
MSVOA_N
ClientSampleId :
VN0322WBL02

Quant Method : Z:\voasrv\HPCHEM1\MSVOA_N\methods\82N031723W.M
Quant Title : SW846 8260

TIC Library : C:\Database\NIST0.L
TIC Integration Parameters: LSCINT.P

TIC Top Hit name	RT	EstConc	Units	Response	--Internal Standard--		
					#	RT	Resp Conc
