

Data Path : Z:\voasrv\HPCHEM1\MSVOA\_N\Data\VN120522\  
 Data File : VN075571.D  
 Acq On : 05 Dec 2022 20:06  
 Operator : JC\MD  
 Sample : PB149407ZHE#04  
 Misc : 5.0mL/MSVOA\_N/WATER  
 ALS Vial : 21 Sample Multiplier: 1

Instrument :  
 MSVOA\_N  
 ClientSampleId :  
 PB149407ZHE#04

Quant Time: Dec 06 03:27:00 2022  
 Quant Method : Z:\voasrv\HPCHEM1\MSVOA\_N\methods\82N112122W.M  
 Quant Title : SW846 8260  
 QLast Update : Wed Nov 23 00:18:03 2022  
 Response via : Initial Calibration

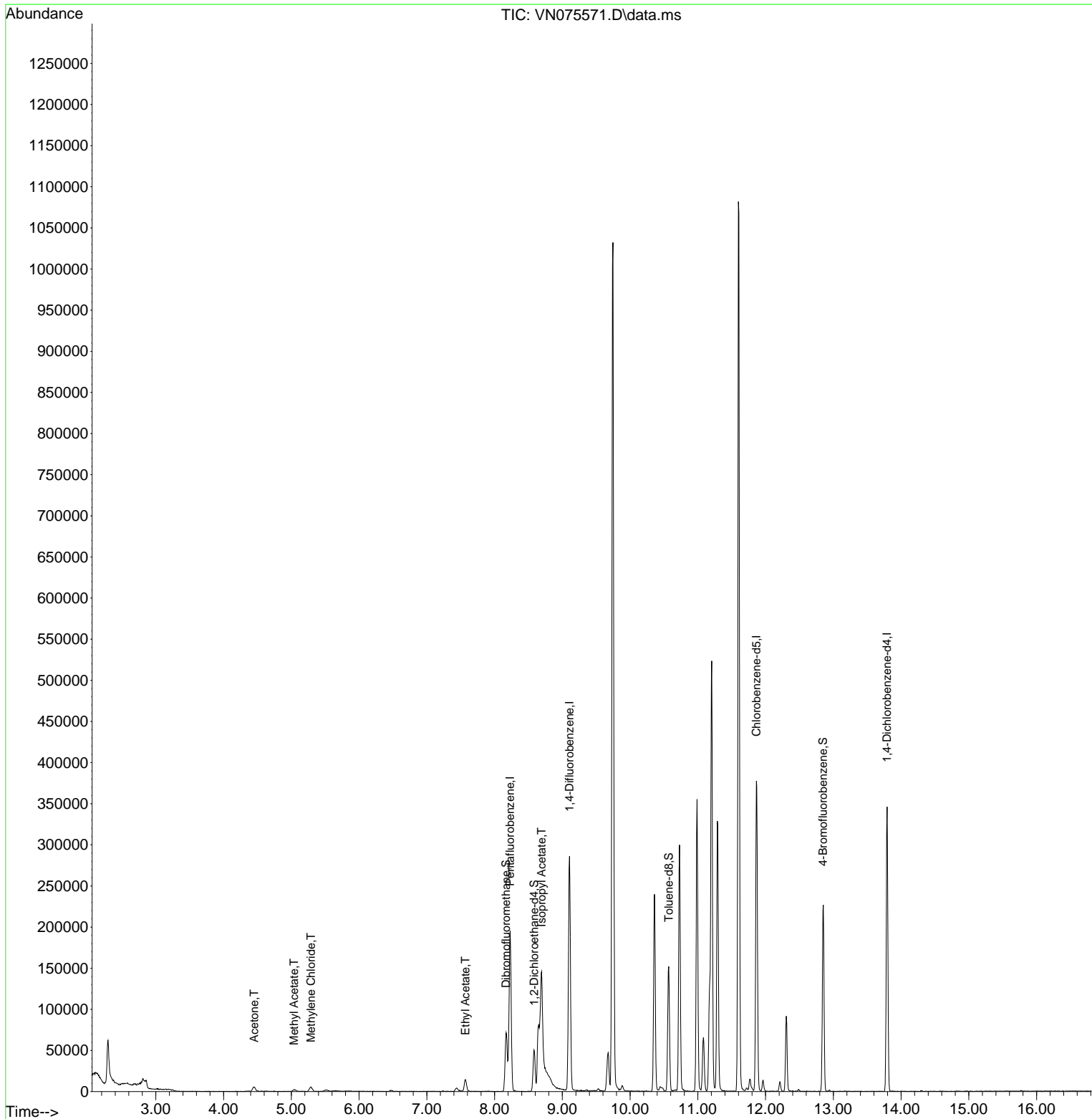
Compound	R.T.	QIon	Response	Conc	Units	Dev(Min)
-----						
Internal Standards						
1) Pentafluorobenzene	8.229	168	148873	50.000	ug/l	0.00
34) 1,4-Difluorobenzene	9.106	114	263759	50.000	ug/l	0.00
63) Chlorobenzene-d5	11.864	117	234930	50.000	ug/l	0.00
72) 1,4-Dichlorobenzene-d4	13.794	152	98752	50.000	ug/l	0.00
System Monitoring Compounds						
33) 1,2-Dichloroethane-d4	8.582	65	40949	51.242	ug/l	0.00
Spiked Amount	50.000	Range	74 - 125	Recovery	=	102.480%
35) Dibromofluoromethane	8.171	113	52715	50.877	ug/l	0.00
Spiked Amount	50.000	Range	75 - 124	Recovery	=	101.760%
50) Toluene-d8	10.570	98	110096	47.177	ug/l	0.00
Spiked Amount	50.000	Range	86 - 113	Recovery	=	94.360%
62) 4-Bromofluorobenzene	12.847	95	76370	44.337	ug/l	0.00
Spiked Amount	50.000	Range	83 - 123	Recovery	=	88.680%
Target Compounds						
						Qvalue
16) Acetone	4.453	43	11199	15.024	ug/l #	82
18) Methyl Acetate	5.041	43	4645	1.208	ug/l #	86
20) Methylene Chloride	5.288	84	4487	1.734	ug/l #	81
37) Ethyl Acetate	7.571	43	21242	10.441	ug/l	100
43) Isopropyl Acetate	8.694	43	278221	85.193	ug/l #	70
-----						

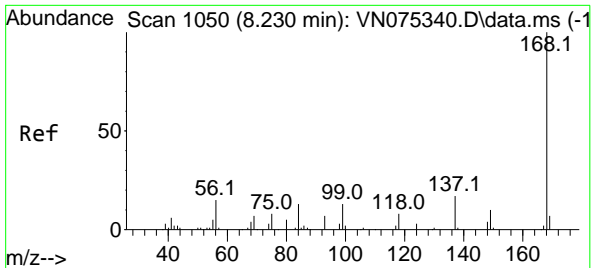
(#) = qualifier out of range (m) = manual integration (+) = signals summed

Data Path : Z:\voasrv\HPCHEM1\MSVOA\_N\Data\VN120522\  
 Data File : VN075571.D  
 Acq On : 05 Dec 2022 20:06  
 Operator : JC\MD  
 Sample : PB149407ZHE#04  
 Misc : 5.0mL/MSVOA\_N/WATER  
 ALS Vial : 21 Sample Multiplier: 1

Instrument :  
 MSVOA\_N  
 ClientSampleId :  
 PB149407ZHE#04

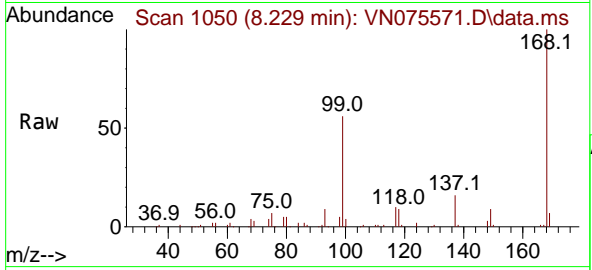
Quant Time: Dec 06 03:27:00 2022  
 Quant Method : Z:\voasrv\HPCHEM1\MSVOA\_N\methods\82N112122W.M  
 Quant Title : SW846 8260  
 QLast Update : Wed Nov 23 00:18:03 2022  
 Response via : Initial Calibration



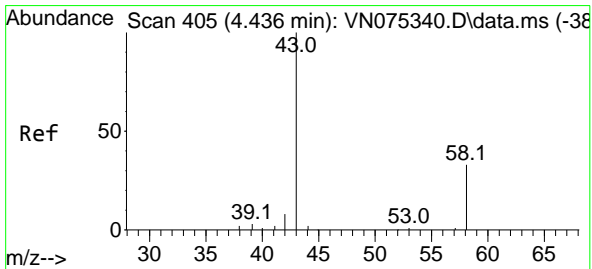
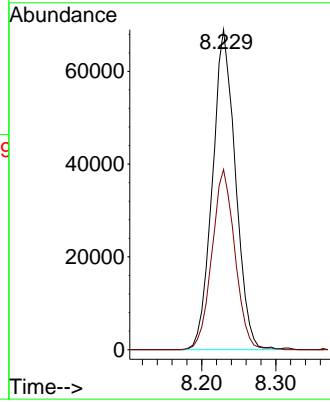
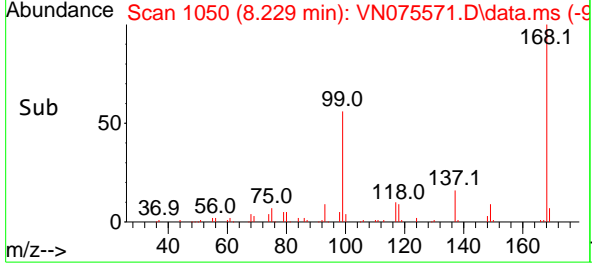


#1  
 Pentafluorobenzene  
 Concen: 50.000 ug/l  
 RT: 8.229 min Scan# 10  
 Delta R.T. -0.001 min  
 Lab File: VN075571.D  
 Acq: 05 Dec 2022 20:06

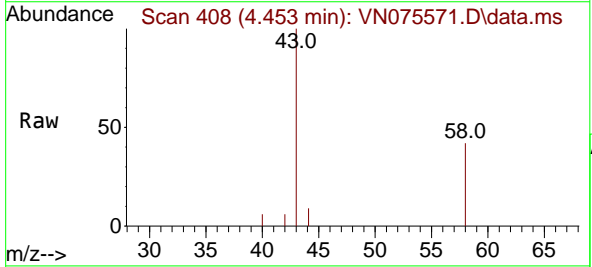
Instrument : MSVOA\_N  
 ClientSampleId : PB149407ZHE#04



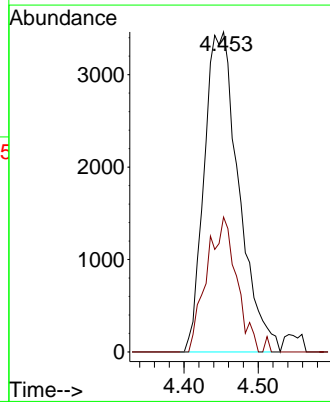
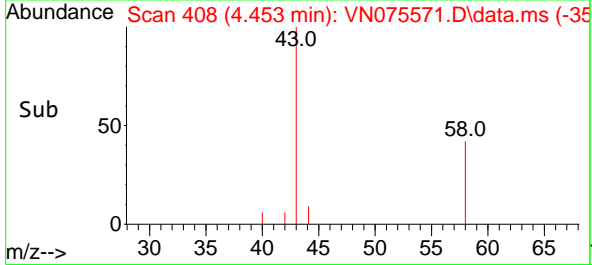
Tgt Ion:168 Resp: 148873  
 Ion Ratio Lower Upper  
 168 100  
 99 56.3 51.6 77.4

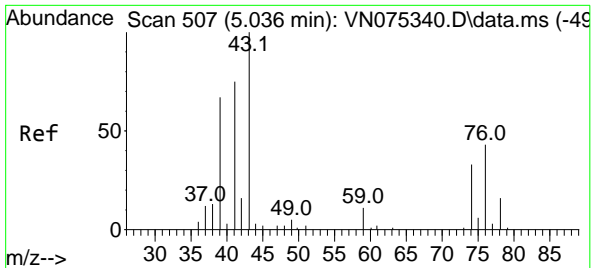


#16  
 Acetone  
 Concen: 15.024 ug/l  
 RT: 4.453 min Scan# 408  
 Delta R.T. 0.017 min  
 Lab File: VN075571.D  
 Acq: 05 Dec 2022 20:06



Tgt Ion: 43 Resp: 11199  
 Ion Ratio Lower Upper  
 43 100  
 58 42.1 25.5 38.3#

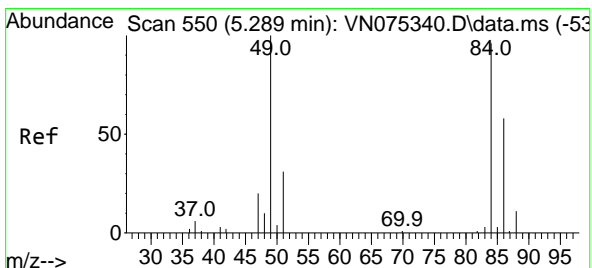
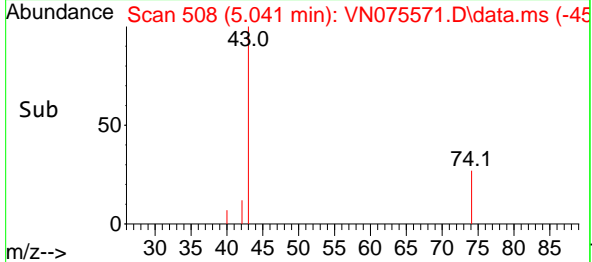
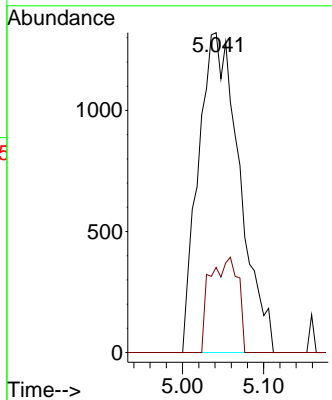
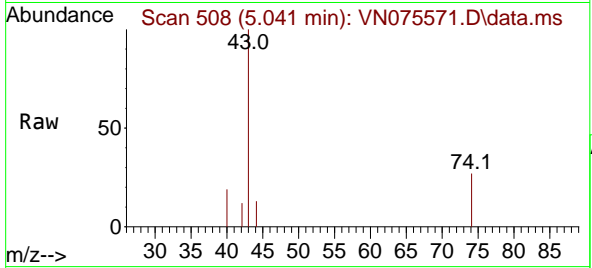




#18  
 Methyl Acetate  
 Concen: 1.208 ug/l  
 RT: 5.041 min Scan# 50  
 Delta R.T. 0.005 min  
 Lab File: VN075571.D  
 Acq: 05 Dec 2022 20:06

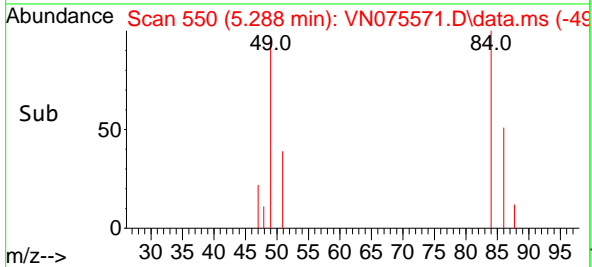
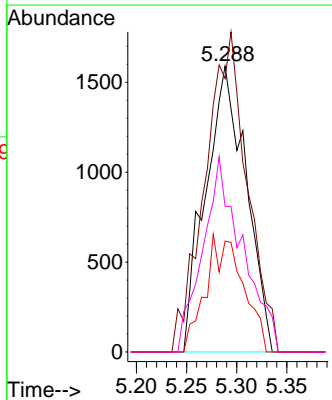
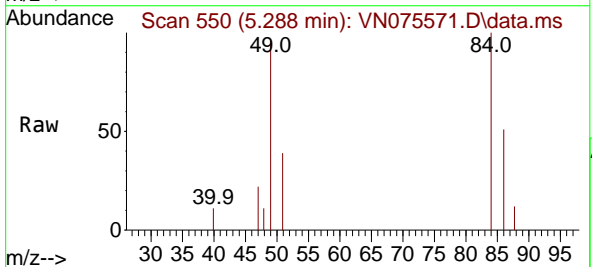
Instrument : MSVOA\_N  
 ClientSampleId : PB149407ZHE#04

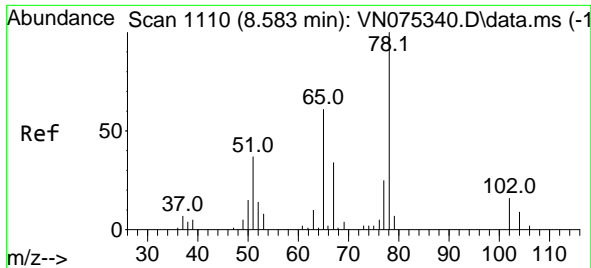
Tgt Ion: 43 Resp: 4645  
 Ion Ratio Lower Upper  
 43 100  
 74 20.4 22.0 33.0#



#20  
 Methylene Chloride  
 Concen: 1.734 ug/l  
 RT: 5.288 min Scan# 550  
 Delta R.T. -0.001 min  
 Lab File: VN075571.D  
 Acq: 05 Dec 2022 20:06

Tgt Ion: 84 Resp: 4487  
 Ion Ratio Lower Upper  
 84 100  
 49 95.7 94.9 142.3  
 51 38.8 26.8 40.2  
 86 50.9 53.7 80.5#

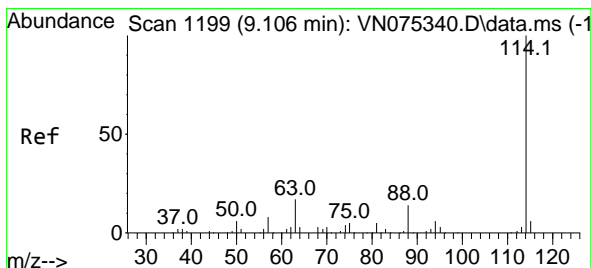
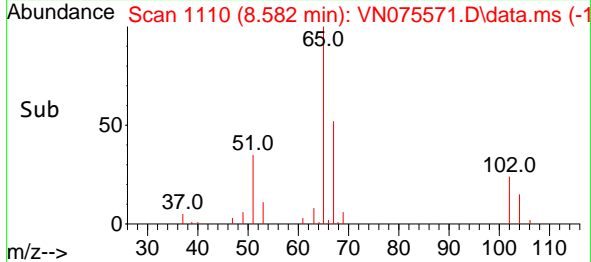
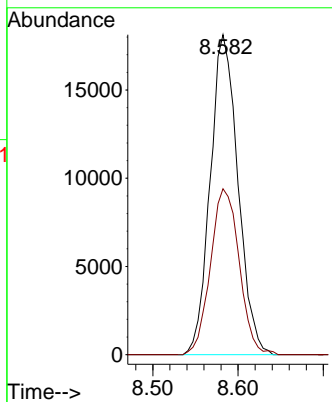
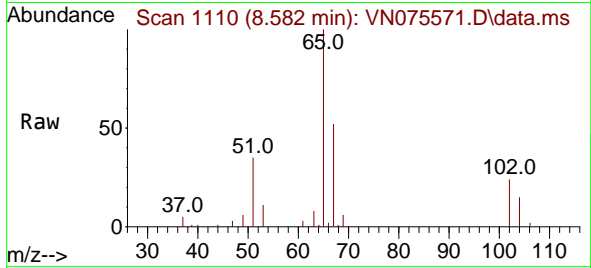




#33  
 1,2-Dichloroethane-d4  
 Concen: 51.242 ug/l  
 RT: 8.582 min Scan# 1110  
 Delta R.T. -0.001 min  
 Lab File: VN075571.D  
 Acq: 05 Dec 2022 20:06

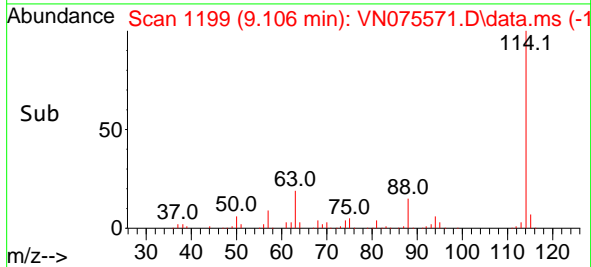
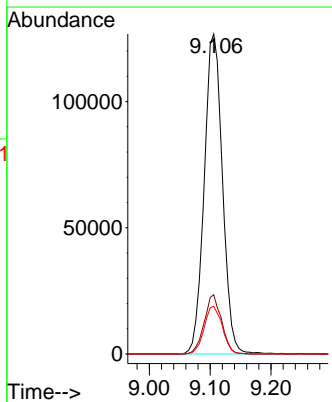
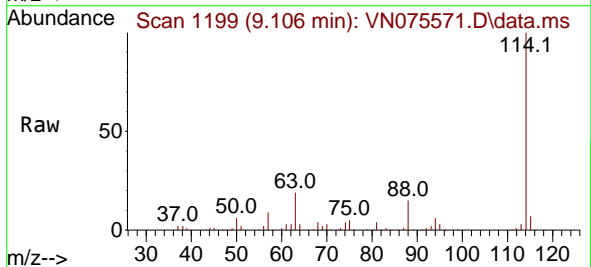
Instrument : MSVOA\_N  
 ClientSampleId : PB149407ZHE#04

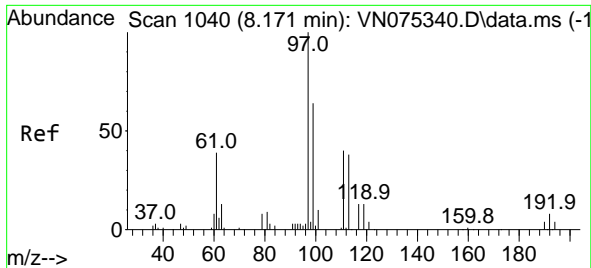
Tgt Ion: 65 Resp: 40949  
 Ion Ratio Lower Upper  
 65 100  
 67 53.8 0.0 102.0



#34  
 1,4-Difluorobenzene  
 Concen: 50.000 ug/l  
 RT: 9.106 min Scan# 1199  
 Delta R.T. -0.000 min  
 Lab File: VN075571.D  
 Acq: 05 Dec 2022 20:06

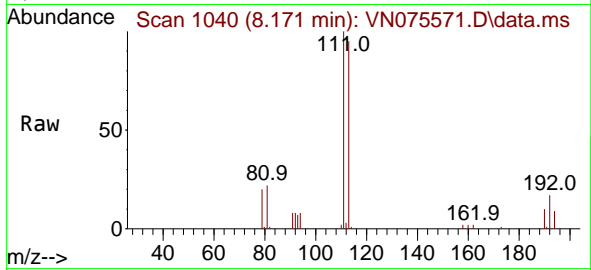
Tgt Ion:114 Resp: 263759  
 Ion Ratio Lower Upper  
 114 100  
 63 18.5 0.0 39.6  
 88 14.9 0.0 29.0



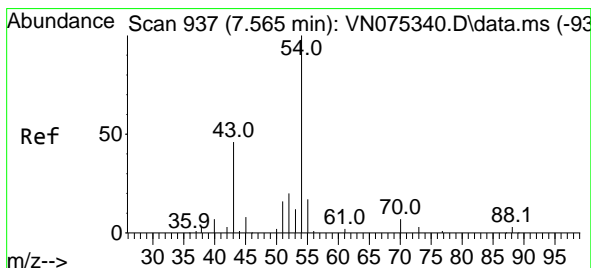
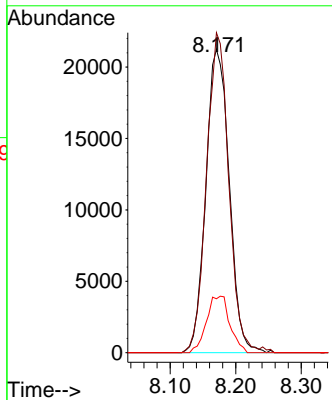
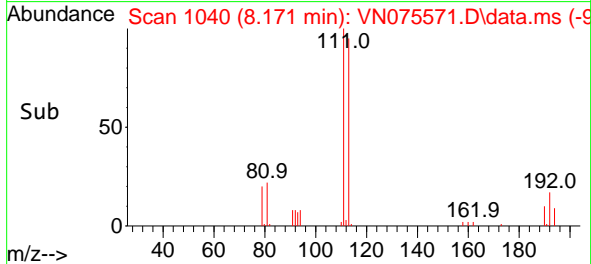


#35  
 Dibromofluoromethane  
 Concen: 50.877 ug/l  
 RT: 8.171 min Scan# 1040  
 Delta R.T. -0.000 min  
 Lab File: VN075571.D  
 Acq: 05 Dec 2022 20:06

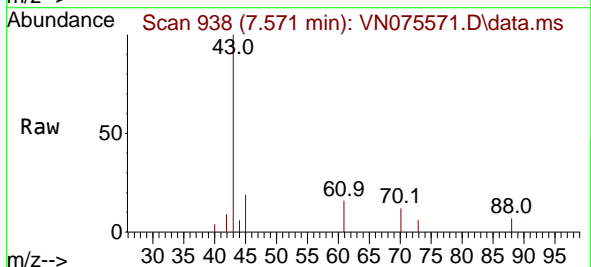
Instrument : MSVOA\_N  
 ClientSampleId : PB149407ZHE#04



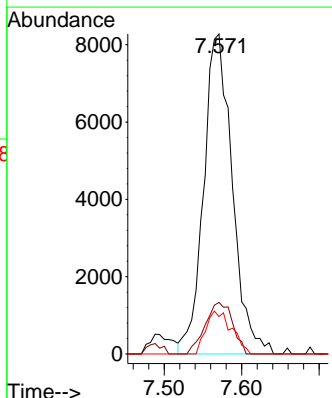
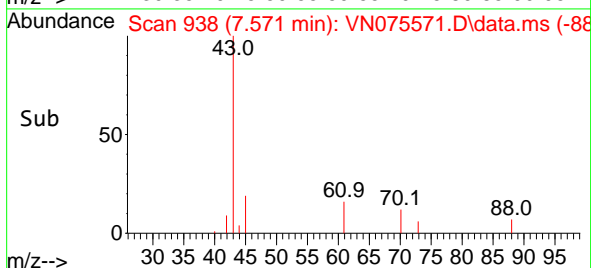
Tgt Ion: 113 Resp: 52715  
 Ion Ratio Lower Upper  
 113 100  
 111 100.1 80.5 120.7  
 192 18.5 13.2 19.8

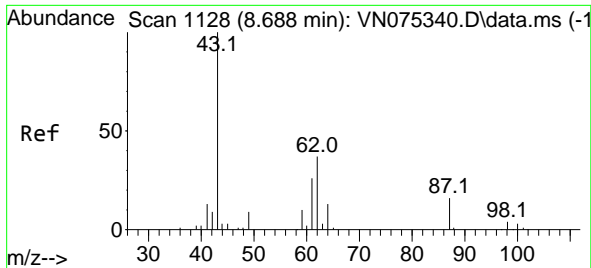


#37  
 Ethyl Acetate  
 Concen: 10.441 ug/l  
 RT: 7.571 min Scan# 938  
 Delta R.T. 0.006 min  
 Lab File: VN075571.D  
 Acq: 05 Dec 2022 20:06



Tgt Ion: 43 Resp: 21242  
 Ion Ratio Lower Upper  
 43 100  
 61 15.4 12.2 18.4  
 70 12.0 9.4 14.2



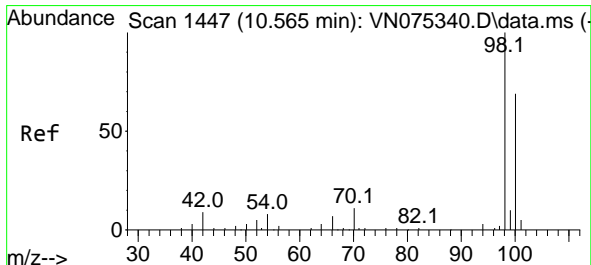
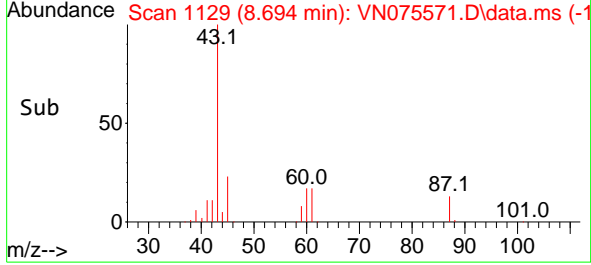
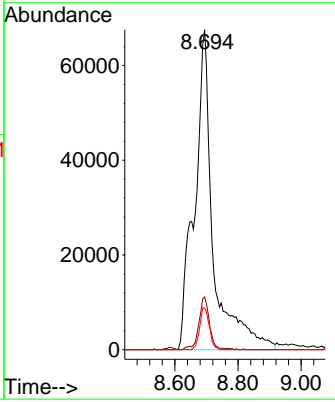
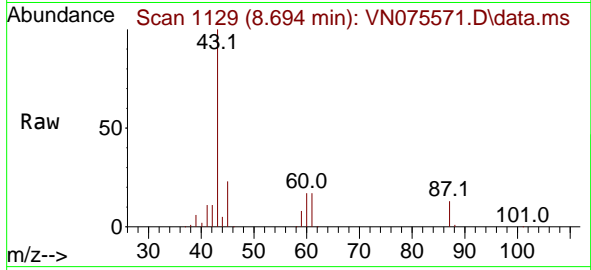


#43  
 Isopropyl Acetate  
 Concen: 85.193 ug/l  
 RT: 8.694 min Scan# 1129  
 Delta R.T. 0.006 min  
 Lab File: VN075571.D  
 Acq: 05 Dec 2022 20:06

Instrument : MSVOA\_N  
 ClientSampleId : PB149407ZHE#04

Tgt Ion: 43 Resp: 278221

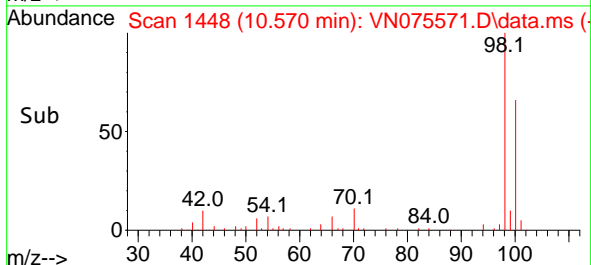
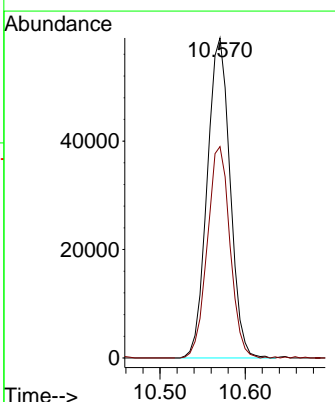
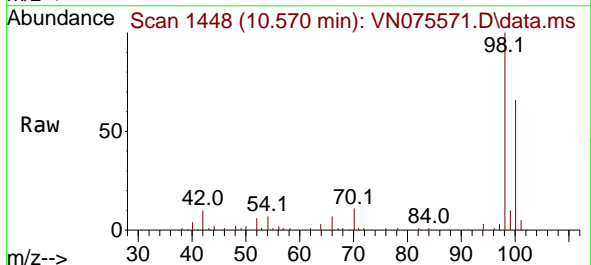
Ion	Ratio	Lower	Upper
43	100		
61	9.4	22.4	33.6#
87	6.7	12.5	18.7#

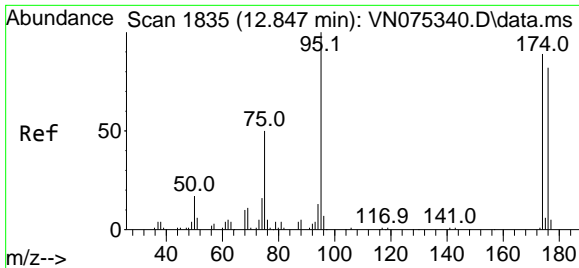


#50  
 Toluene-d8  
 Concen: 47.177 ug/l  
 RT: 10.570 min Scan# 1448  
 Delta R.T. 0.005 min  
 Lab File: VN075571.D  
 Acq: 05 Dec 2022 20:06

Tgt Ion: 98 Resp: 110096

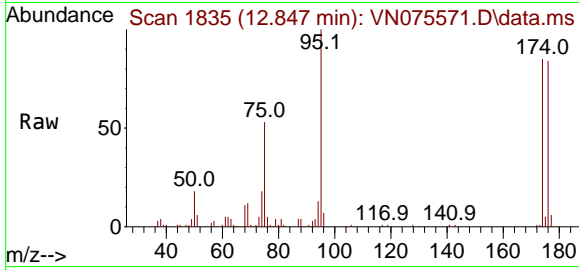
Ion	Ratio	Lower	Upper
98	100		
100	65.4	53.0	79.6



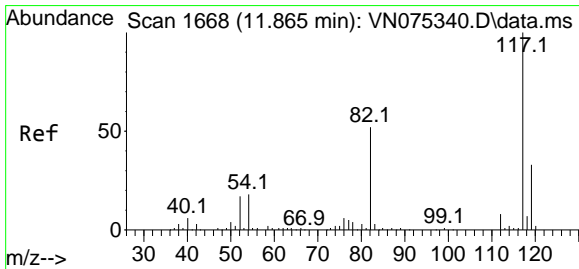
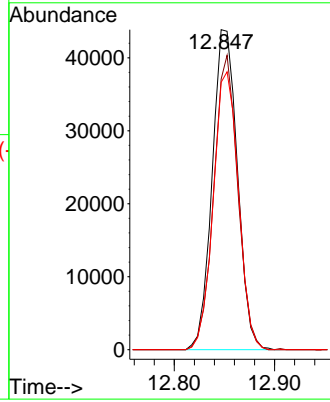
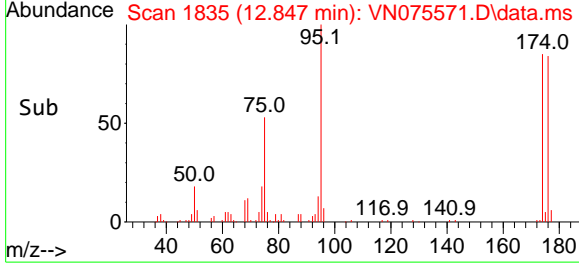


#62  
 4-Bromofluorobenzene  
 Concen: 44.337 ug/l  
 RT: 12.847 min Scan# 11  
 Delta R.T. -0.000 min  
 Lab File: VN075571.D  
 Acq: 05 Dec 2022 20:06

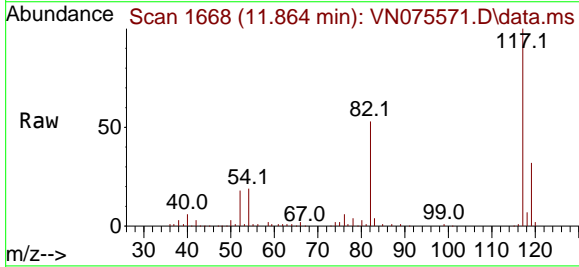
Instrument : MSVOA\_N  
 ClientSampleId : PB149407ZHE#04



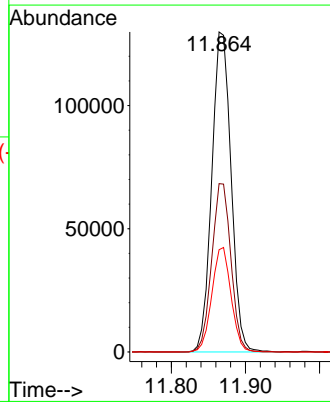
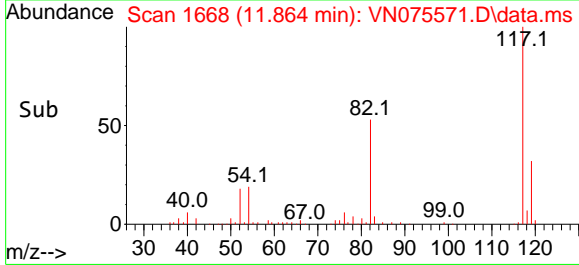
Tgt Ion: 95 Resp: 76370  
 Ion Ratio Lower Upper  
 95 100  
 174 87.6 0.0 147.4  
 176 86.6 0.0 142.2



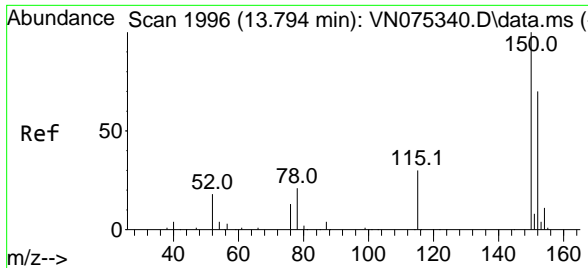
#63  
 Chlorobenzene-d5  
 Concen: 50.000 ug/l  
 RT: 11.864 min Scan# 1668  
 Delta R.T. -0.001 min  
 Lab File: VN075571.D  
 Acq: 05 Dec 2022 20:06



Tgt Ion: 117 Resp: 234930  
 Ion Ratio Lower Upper  
 117 100  
 82 52.6 43.1 64.7  
 119 31.9 25.5 38.3

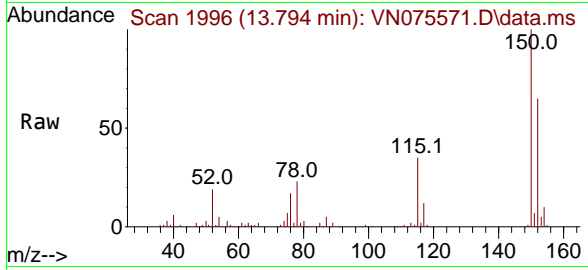






#72  
 1,4-Dichlorobenzene-d4  
 Concen: 50.000 ug/l  
 RT: 13.794 min Scan# 1996  
 Delta R.T. -0.000 min  
 Lab File: VN075571.D  
 Acq: 05 Dec 2022 20:06

Instrument : MSVOA\_N  
 ClientSampleId : PB149407ZHE#04



Tgt Ion	Resp	Ion Ratio	Lower	Upper
152	98752	100		
115	57.2	30.2	90.6	
150	157.5	0.0	348.4	

