

Data Path : Z:\voasrv\HPCHEM1\MSVOA_N\Data\VN100722\
 Data File : VN074816.D
 Acq On : 07 Oct 2022 17:08
 Operator : JC\MD
 Sample : N4894-09
 Misc : 5.0mL/MSVOA_N/WATER
 ALS Vial : 20 Sample Multiplier: 1

Instrument :
 MSVOA_N
 ClientSampleId :
 TRIP-BLANK

Quant Time: Oct 08 03:54:11 2022
 Quant Method : Z:\voasrv\HPCHEM1\MSVOA_N\methods\82N100522W.M
 Quant Title : SW846 8260
 QLast Update : Thu Oct 06 05:37:50 2022
 Response via : Initial Calibration

Compound	R.T.	QIon	Response	Conc	Units	Dev(Min)

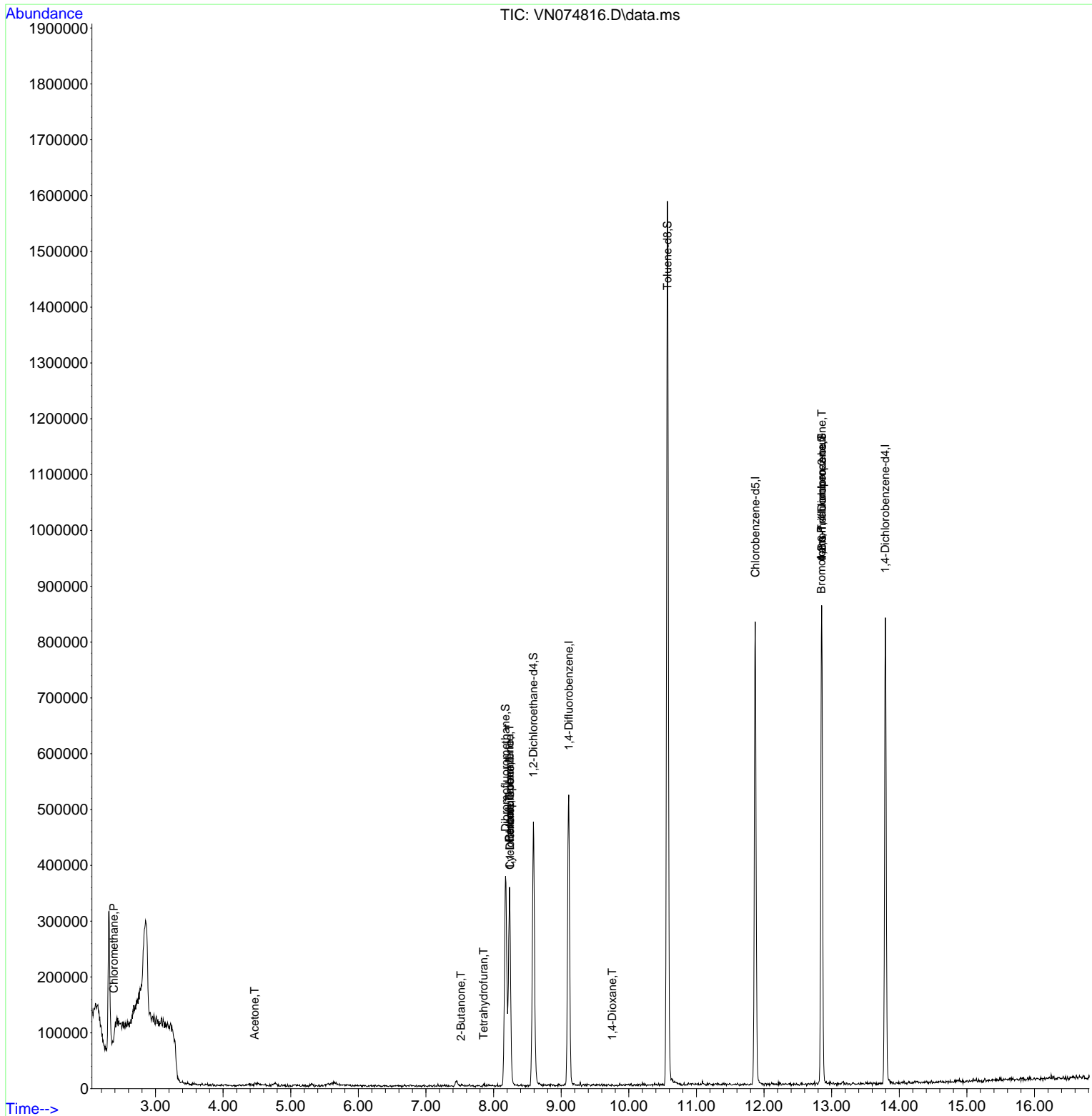
Internal Standards						
1) Pentafluorobenzene	8.235	168	243195	50.000	ug/l	0.00
34) 1,4-Difluorobenzene	9.112	114	460305	50.000	ug/l	0.00
63) Chlorobenzene-d5	11.870	117	459056	50.000	ug/l	0.00
72) 1,4-Dichlorobenzene-d4	13.794	152	212878	50.000	ug/l	0.00
System Monitoring Compounds						
33) 1,2-Dichloroethane-d4	8.588	65	341243	59.220	ug/l	0.00
Spiked Amount	50.000	Range 74 - 125	Recovery	=	118.440%	
35) Dibromofluoromethane	8.177	113	259469	55.791	ug/l	0.00
Spiked Amount	50.000	Range 75 - 124	Recovery	=	111.580%	
50) Toluene-d8	10.571	98	1082080	54.224	ug/l	0.00
Spiked Amount	50.000	Range 86 - 113	Recovery	=	108.440%	
62) 4-Bromofluorobenzene	12.853	95	276850	45.638	ug/l	0.00
Spiked Amount	50.000	Range 83 - 123	Recovery	=	91.280%	
Target Compounds						
						Qvalue
3) Chloromethane	2.383	50	1926	0.260	ug/l #	46
13) Acrolein	4.236	56	79	Below Cal	#	1
16) Acetone	4.465	43	2801	0.858	ug/l	100
20) Methylene Chloride	5.289	84	364	Below Cal	#	3
25) 2-Butanone	7.518	43	1937	0.327	ug/l #	48
29) Tetrahydrofuran	7.853	42	1172	0.284	ug/l #	56
31) Cyclohexane	8.241	56	6873	0.690	ug/l #	17
36) 1,1-Dichloropropene	8.241	75	23298	3.095	ug/l #	51
38) Carbon Tetrachloride	8.235	117	27142	3.823	ug/l #	17
49) 1,4-Dioxane	9.753	88	250	1.506	ug/l #	28
71) Bromoform	12.847	173	1785	0.456	ug/l #	1
75) 1,1,2,2-Tetrachloroethane	12.865	83	112	Below Cal	#	1
76) 1,2,3-Trichloropropane	12.853	75	155737	24.511	ug/l #	1
77) Bromobenzene	12.994	156	171	Below Cal	#	1
81) trans-1,4-Dichloro-2-b...	12.853	75	155737	47.756	ug/l #	14
96) 1,2,3-Trichlorobenzene	15.841	180	82	Below Cal	#	12

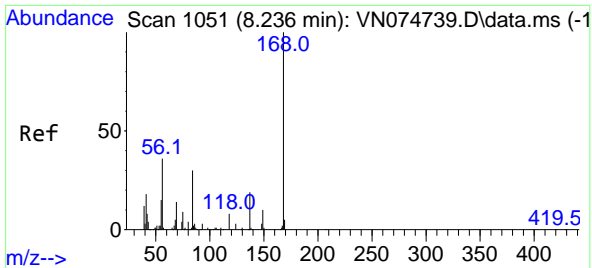
(#) = qualifier out of range (m) = manual integration (+) = signals summed

Data Path : Z:\voasrv\HPCHEM1\MSVOA_N\Data\VN100722\
 Data File : VN074816.D
 Acq On : 07 Oct 2022 17:08
 Operator : JC\MD
 Sample : N4894-09
 Misc : 5.0mL/MSVOA_N/WATER
 ALS Vial : 20 Sample Multiplier: 1

Instrument :
 MSVOA_N
ClientSampleId :
 TRIP-BLANK

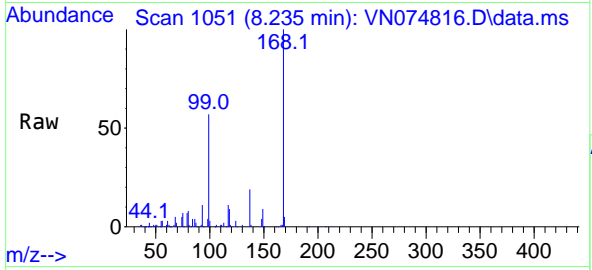
Quant Time: Oct 08 03:54:11 2022
 Quant Method : Z:\voasrv\HPCHEM1\MSVOA_N\methods\82N100522W.M
 Quant Title : SW846 8260
 QLast Update : Thu Oct 06 05:37:50 2022
 Response via : Initial Calibration



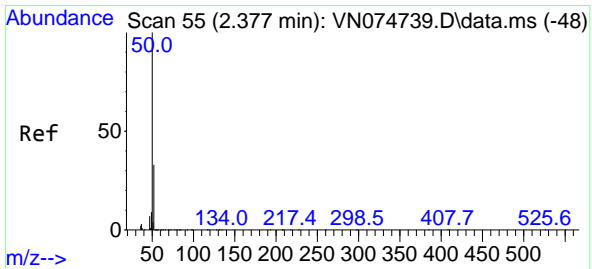
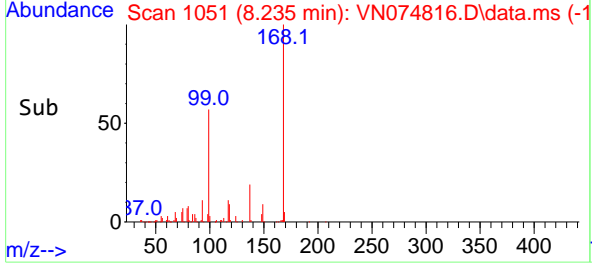
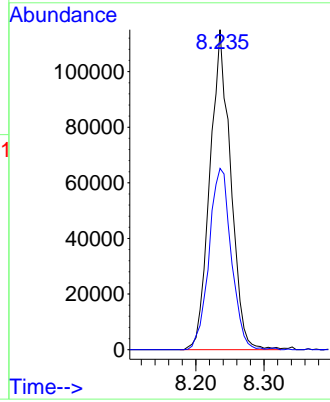


#1
 Pentafluorobenzene
 Concen: 50.000 ug/l
 RT: 8.235 min Scan# 10
 Delta R.T. -0.001 min
 Lab File: VN074816.D
 Acq: 07 Oct 2022 17:08

Instrument :
 MSVOA_N
 ClientSampleId :
 TRIP-BLANK

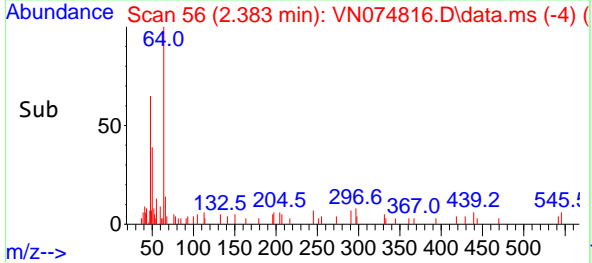
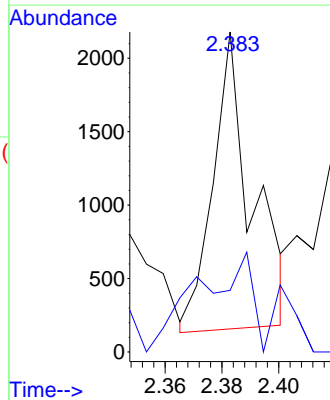
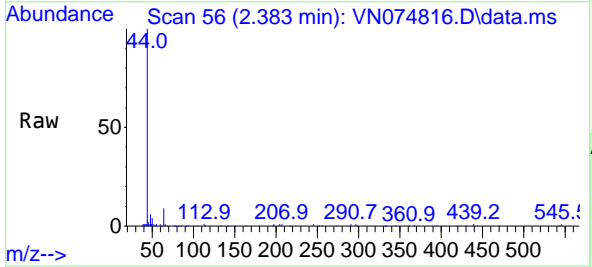


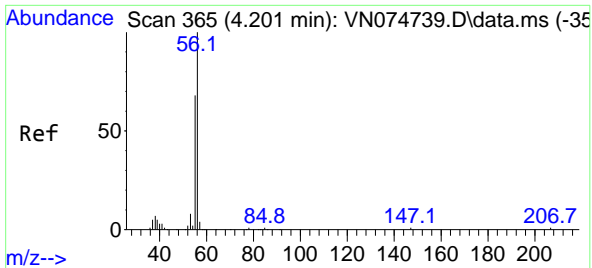
Tgt Ion:168 Resp: 243195
 Ion Ratio Lower Upper
 168 100
 99 56.7 42.8 64.2



#3
 Chloromethane
 Concen: 0.260 ug/l
 RT: 2.383 min Scan# 56
 Delta R.T. 0.006 min
 Lab File: VN074816.D
 Acq: 07 Oct 2022 17:08

Tgt Ion: 50 Resp: 1926
 Ion Ratio Lower Upper
 50 100
 52 2.6 26.7 40.1#

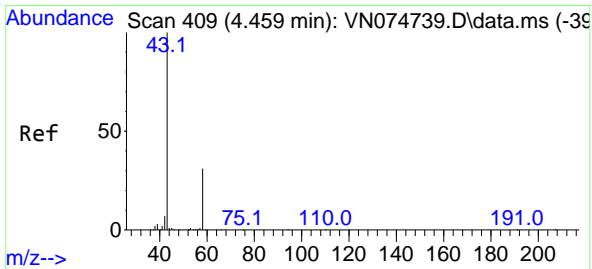
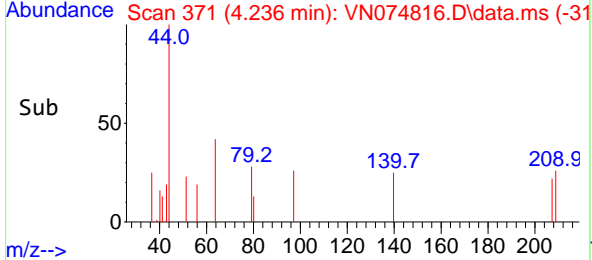
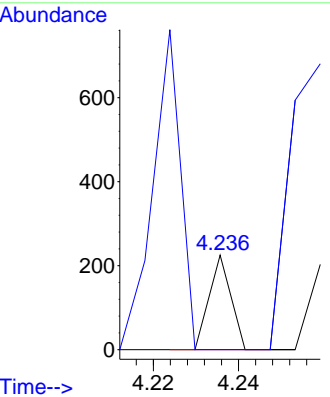
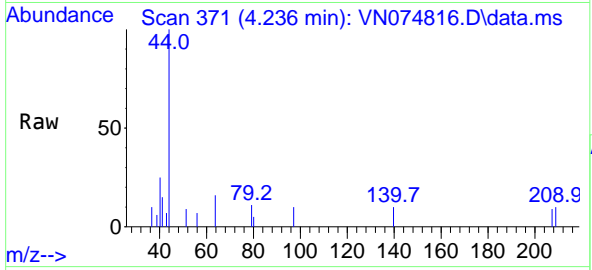




#13
 Acrolein
 Concen: Below Cal
 RT: 4.236 min Scan# 31
 Delta R.T. 0.035 min
 Lab File: VN074816.D
 Acq: 07 Oct 2022 17:08

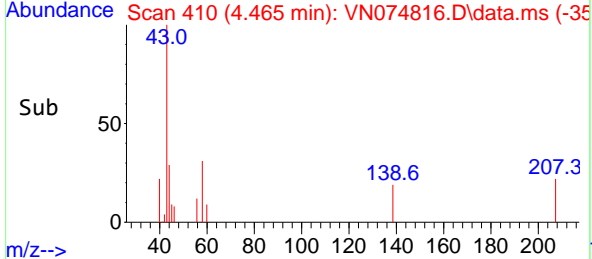
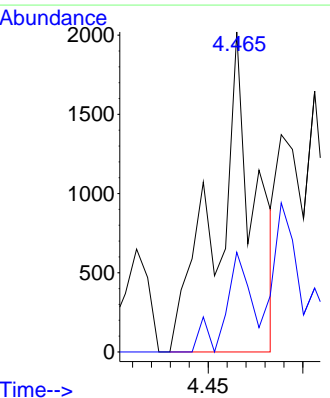
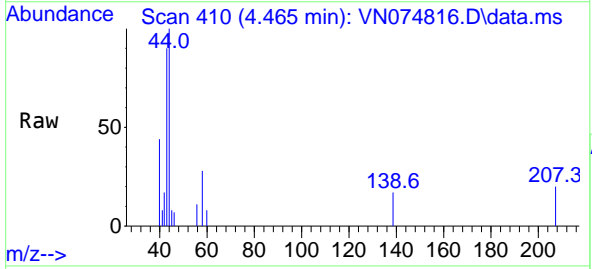
Instrument : MSVOA_N
 ClientSampleId : TRIP-BLANK

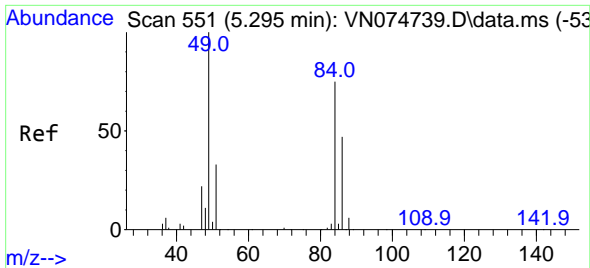
Tgt Ion: 56 Resp: 79
 Ion Ratio Lower Upper
 56 100
 55 435.4 54.9 82.3#



#16
 Acetone
 Concen: 0.858 ug/l
 RT: 4.465 min Scan# 410
 Delta R.T. 0.006 min
 Lab File: VN074816.D
 Acq: 07 Oct 2022 17:08

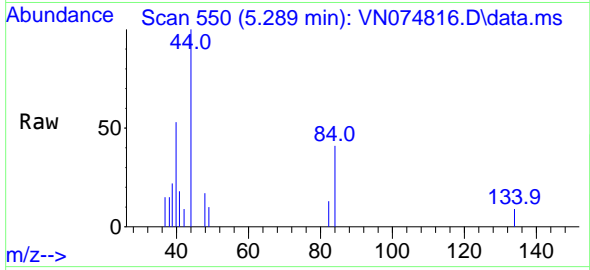
Tgt Ion: 43 Resp: 2801
 Ion Ratio Lower Upper
 43 100
 58 31.1 24.9 37.3





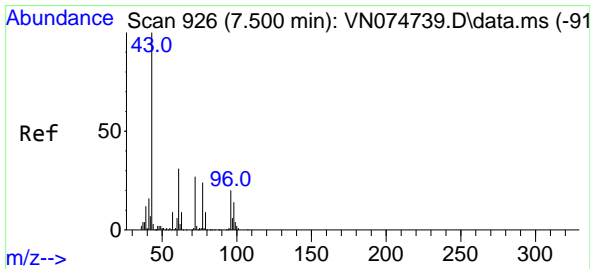
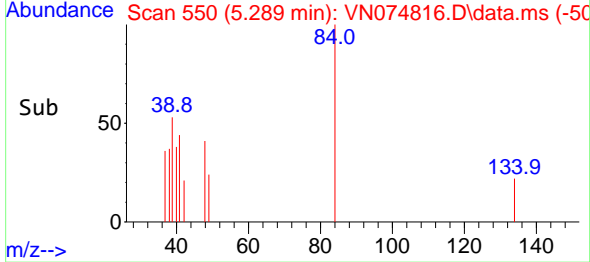
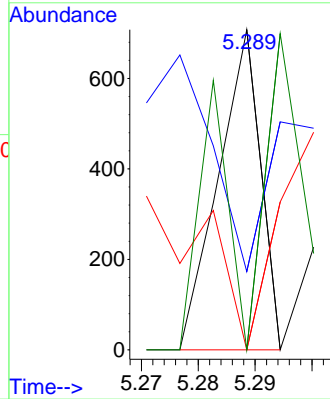
#20
 Methylene Chloride
 Concen: Below Cal
 RT: 5.289 min Scan# 51
 Delta R.T. -0.006 min
 Lab File: VN074816.D
 Acq: 07 Oct 2022 17:08

Instrument :
 MSVOA_N
 ClientSampleId :
 TRIP-BLANK



Tgt Ion: 84 Resp: 364

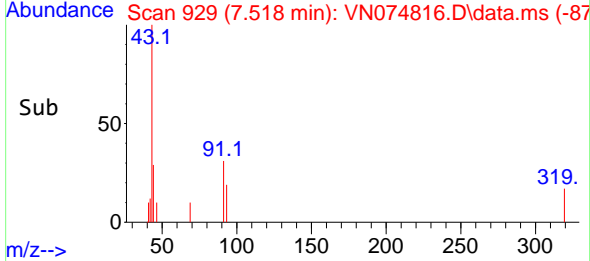
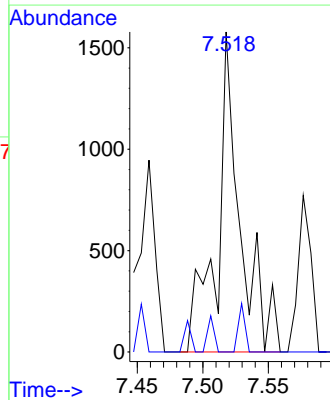
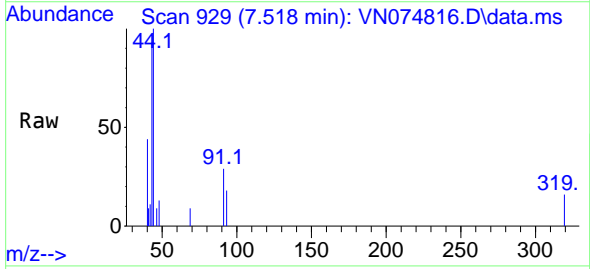
Ion	Ratio	Lower	Upper
84	100		
49	0.0	107.4	161.0#
51	0.0	35.1	52.7#
86	0.0	50.4	75.6#

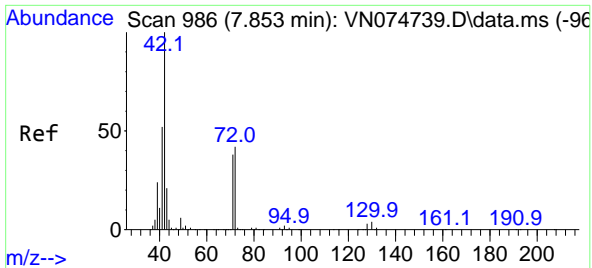


#25
 2-Butanone
 Concen: 0.327 ug/l
 RT: 7.518 min Scan# 929
 Delta R.T. 0.017 min
 Lab File: VN074816.D
 Acq: 07 Oct 2022 17:08

Tgt Ion: 43 Resp: 1937

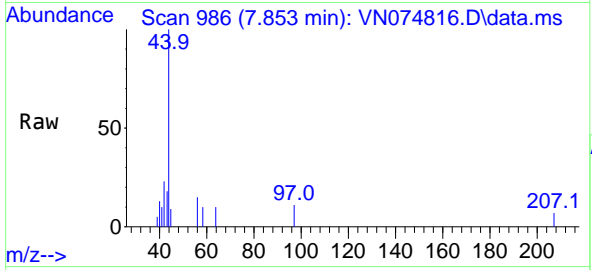
Ion	Ratio	Lower	Upper
43	100		
72	0.0	21.4	32.0#





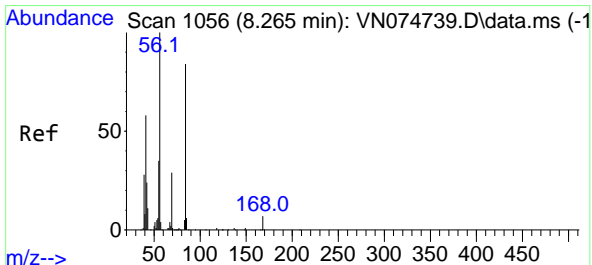
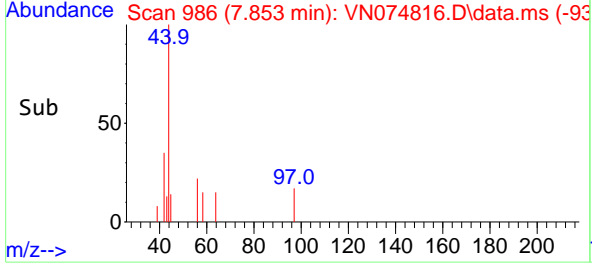
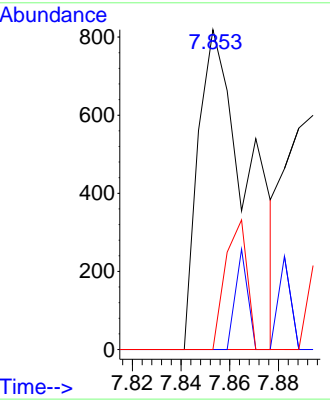
#29
 Tetrahydrofuran
 Concen: 0.284 ug/l
 RT: 7.853 min Scan# 91
 Delta R.T. -0.000 min
 Lab File: VN074816.D
 Acq: 07 Oct 2022 17:08

Instrument : MSVOA_N
 Client Sample Id : TRIP-BLANK

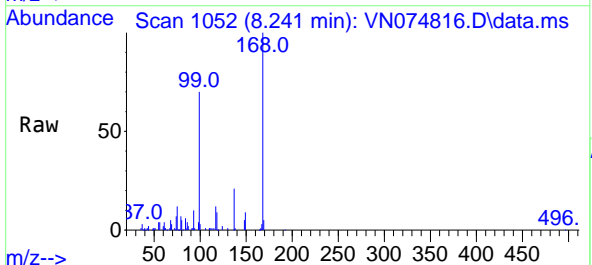


Tgt Ion: 42 Resp: 1172

Ion	Ratio	Lower	Upper
42	100		
72	7.8	33.0	49.6#
71	17.5	30.4	45.6#

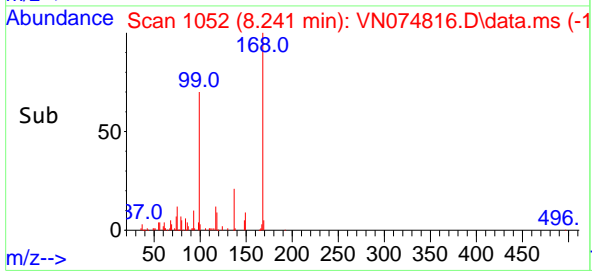
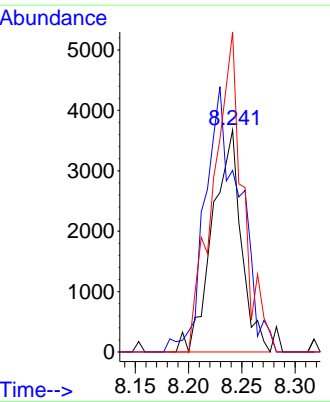


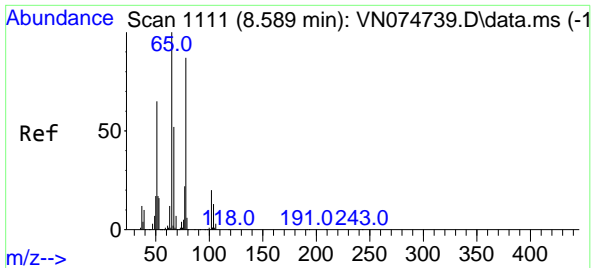
#31
 Cyclohexane
 Concen: 0.690 ug/l
 RT: 8.241 min Scan# 1052
 Delta R.T. -0.024 min
 Lab File: VN074816.D
 Acq: 07 Oct 2022 17:08



Tgt Ion: 56 Resp: 6873

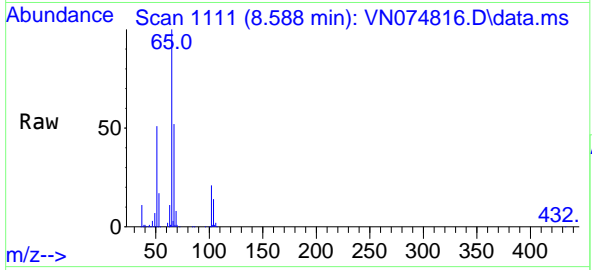
Ion	Ratio	Lower	Upper
56	100		
69	75.9	23.1	34.7#
84	156.9	67.1	100.7#



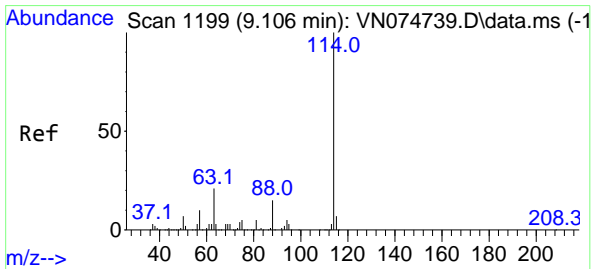
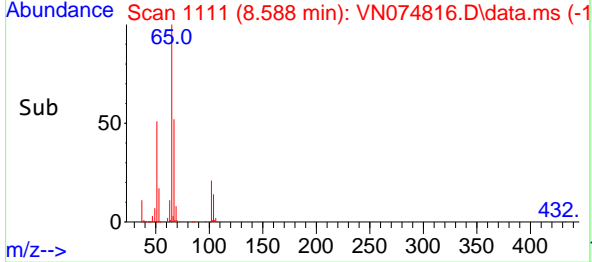
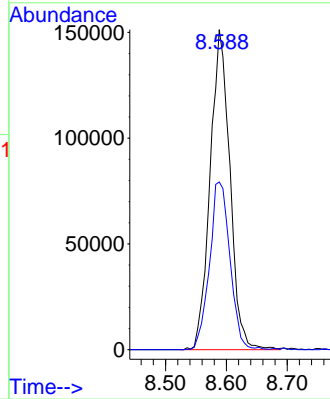


#33
 1,2-Dichloroethane-d4
 Concen: 59.220 ug/l
 RT: 8.588 min Scan# 1111
 Delta R.T. -0.000 min
 Lab File: VN074816.D
 Acq: 07 Oct 2022 17:08

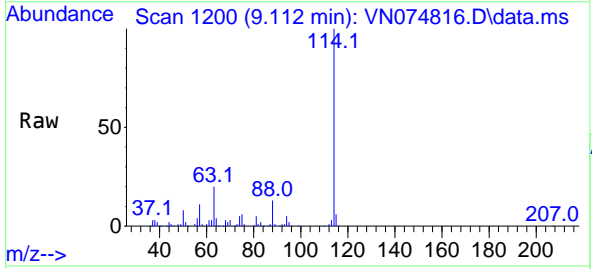
Instrument : MSVOA_N
 ClientSampleId : TRIP-BLANK



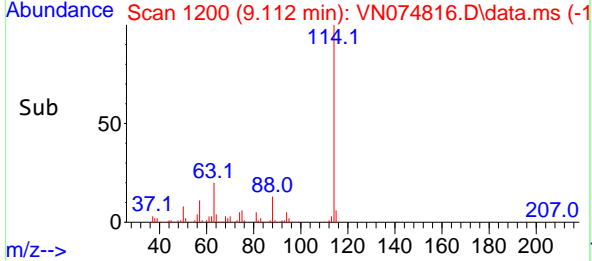
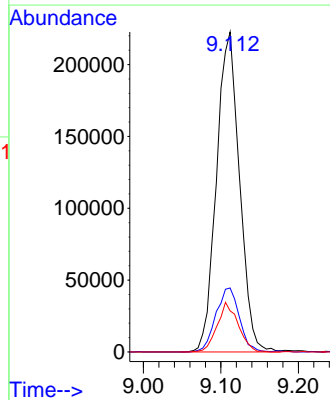
Tgt Ion: 65 Resp: 341243
 Ion Ratio Lower Upper
 65 100
 67 54.3 0.0 109.0

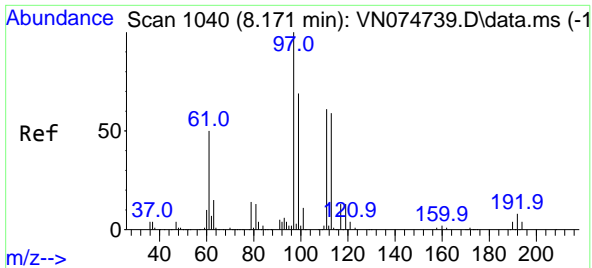


#34
 1,4-Difluorobenzene
 Concen: 50.000 ug/l
 RT: 9.112 min Scan# 1200
 Delta R.T. 0.006 min
 Lab File: VN074816.D
 Acq: 07 Oct 2022 17:08



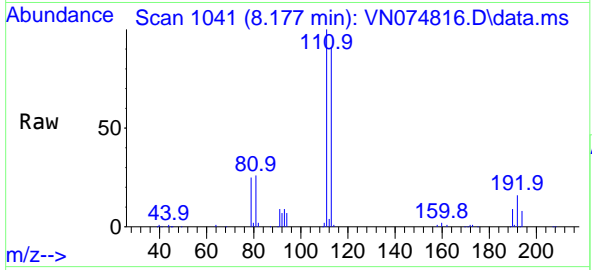
Tgt Ion: 114 Resp: 460305
 Ion Ratio Lower Upper
 114 100
 63 20.0 0.0 41.2
 88 12.9 0.0 30.2





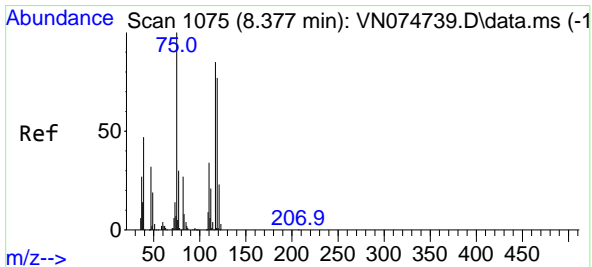
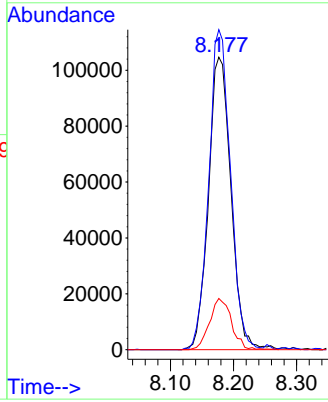
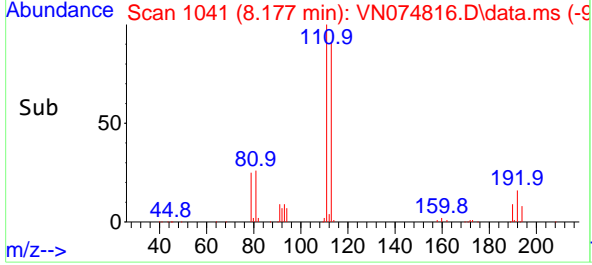
#35
 Dibromofluoromethane
 Concen: 55.791 ug/l
 RT: 8.177 min Scan# 1041
 Delta R.T. 0.006 min
 Lab File: VN074816.D
 Acq: 07 Oct 2022 17:08

Instrument : MSVOA_N
 ClientSampleId : TRIP-BLANK

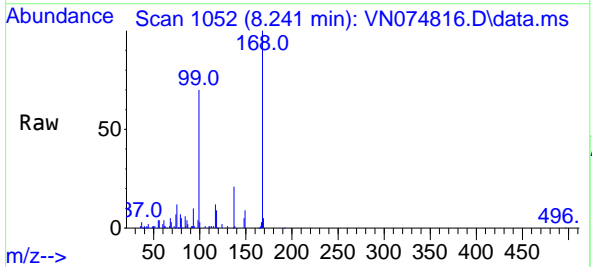


Tgt Ion:113 Resp: 259469

Ion	Ratio	Lower	Upper
113	100		
111	105.6	83.0	124.6
192	17.1	12.6	18.8

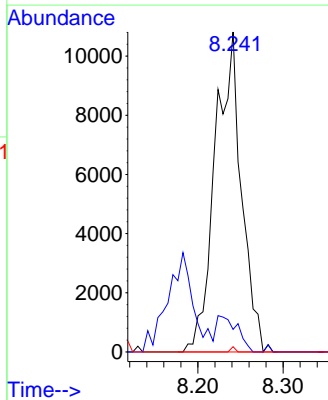
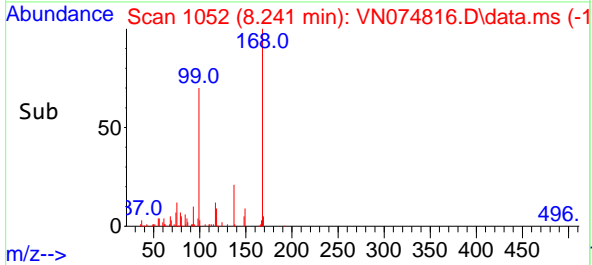


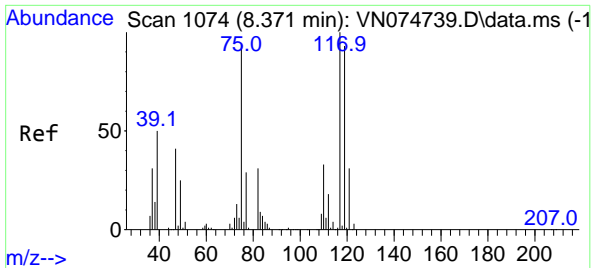
#36
 1,1-Dichloropropene
 Concen: 3.095 ug/l
 RT: 8.241 min Scan# 1052
 Delta R.T. -0.136 min
 Lab File: VN074816.D
 Acq: 07 Oct 2022 17:08



Tgt Ion: 75 Resp: 23298

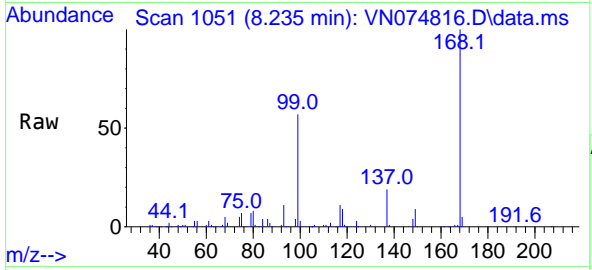
Ion	Ratio	Lower	Upper
75	100		
110	8.9	17.2	51.5#
77	0.3	24.3	36.5#





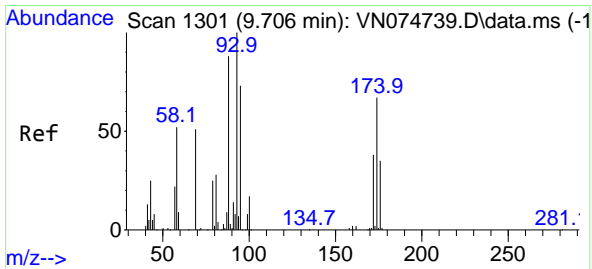
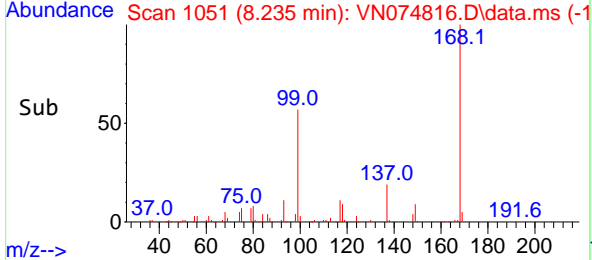
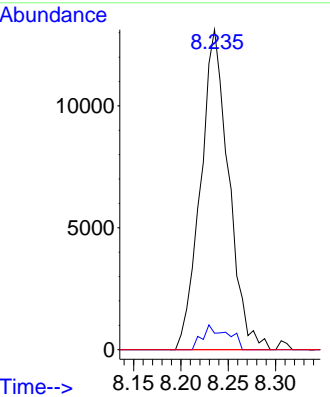
#38
 Carbon Tetrachloride
 Concen: 3.823 ug/l
 RT: 8.235 min Scan# 1051
 Delta R.T. -0.136 min
 Lab File: VN074816.D
 Acq: 07 Oct 2022 17:08

Instrument : MSVOA_N
 ClientSampleId : TRIP-BLANK



Tgt Ion: 117 Resp: 27142

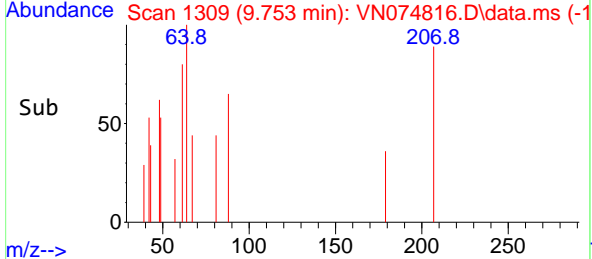
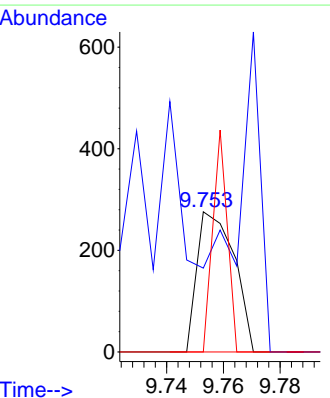
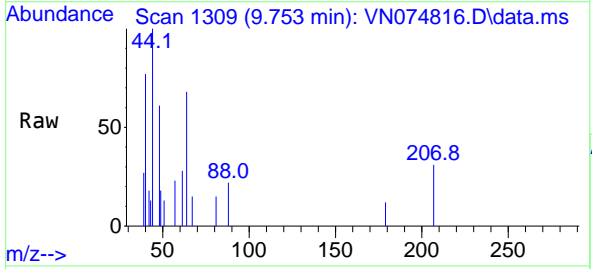
Ion	Ratio	Lower	Upper
117	100		
119	5.2	74.3	111.5#
121	0.0	25.0	37.4#

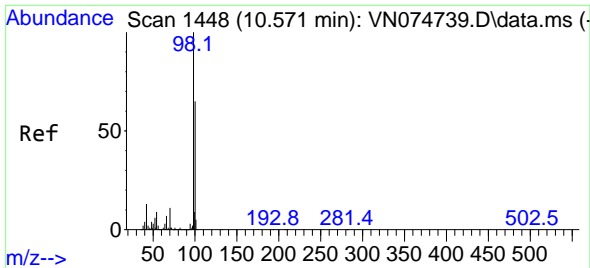


#49
 1,4-Dioxane
 Concen: 1.506 ug/l
 RT: 9.753 min Scan# 1309
 Delta R.T. 0.047 min
 Lab File: VN074816.D
 Acq: 07 Oct 2022 17:08

Tgt Ion: 88 Resp: 250

Ion	Ratio	Lower	Upper
88	100		
43	146.8	23.4	35.2#
58	61.6	54.9	82.3

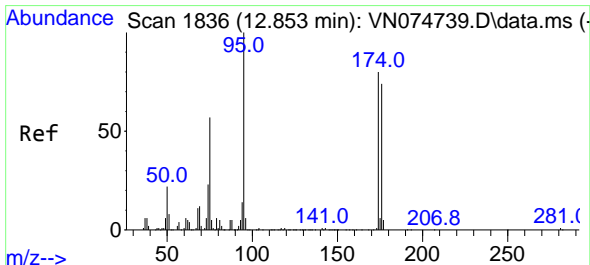
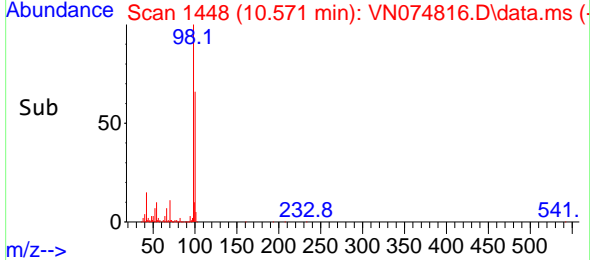
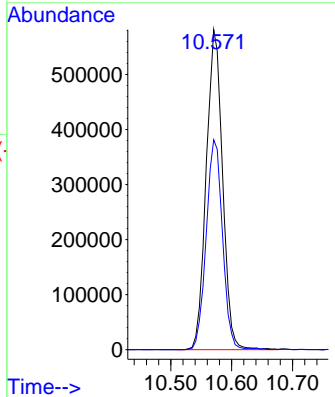
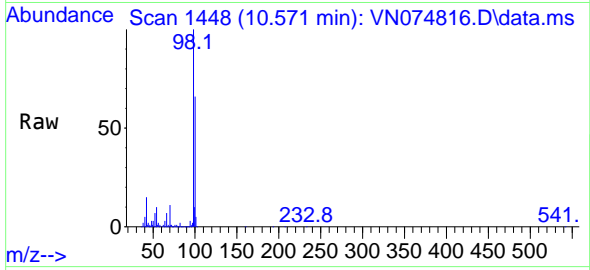




#50
 Toluene-d8
 Concen: 54.224 ug/l
 RT: 10.571 min Scan# 1448
 Delta R.T. -0.000 min
 Lab File: VN074816.D
 Acq: 07 Oct 2022 17:08

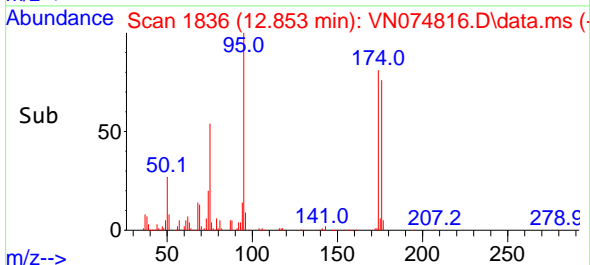
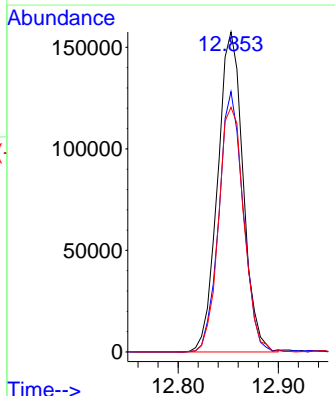
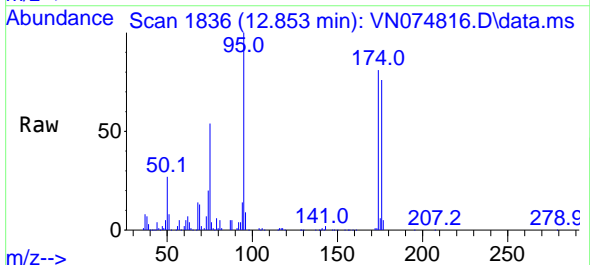
Instrument : MSVOA_N
 ClientSampleId : TRIP-BLANK

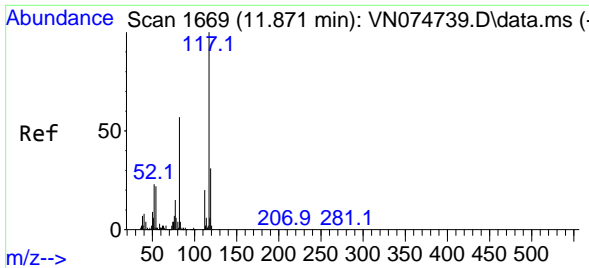
Tgt Ion: 98 Resp: 1082080
 Ion Ratio Lower Upper
 98 100
 100 65.2 50.7 76.1



#62
 4-Bromofluorobenzene
 Concen: 45.638 ug/l
 RT: 12.853 min Scan# 1836
 Delta R.T. -0.000 min
 Lab File: VN074816.D
 Acq: 07 Oct 2022 17:08

Tgt Ion: 95 Resp: 276850
 Ion Ratio Lower Upper
 95 100
 174 78.0 0.0 149.4
 176 76.4 0.0 142.0



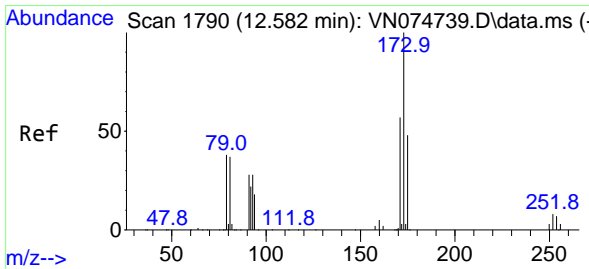
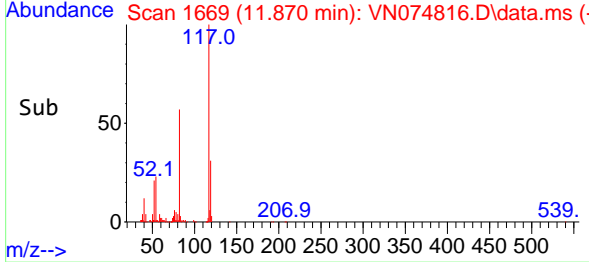
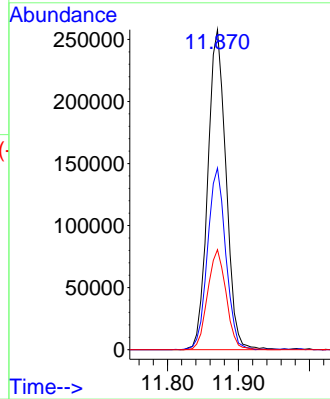
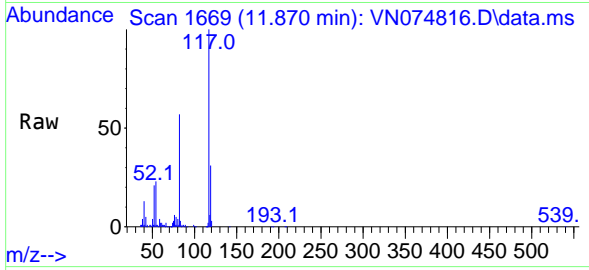


#63
 Chlorobenzene-d5
 Concen: 50.000 ug/l
 RT: 11.870 min Scan# 11
 Delta R.T. -0.000 min
 Lab File: VN074816.D
 Acq: 07 Oct 2022 17:08

Instrument :
 MSVOA_N
 ClientSampleId :
 TRIP-BLANK

Tgt Ion:117 Resp: 459056

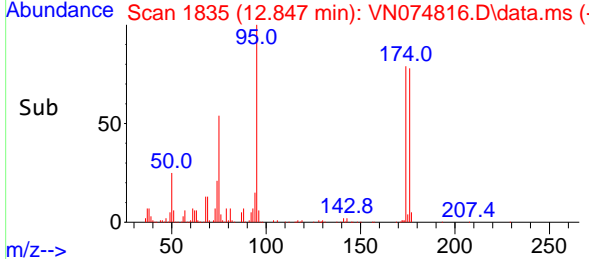
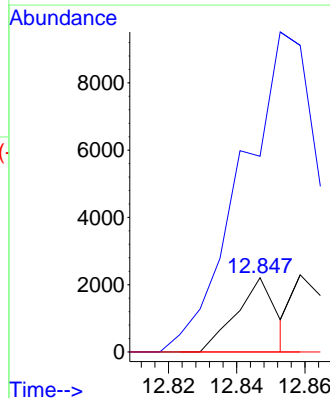
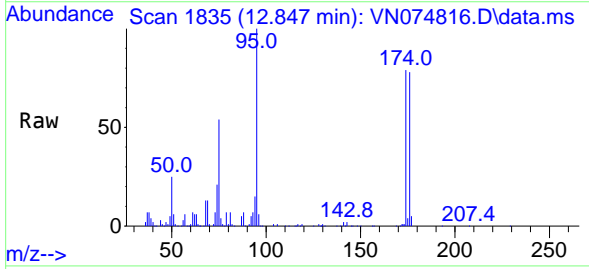
Ion	Ratio	Lower	Upper
117	100		
82	56.8	45.4	68.2
119	31.3	25.1	37.7

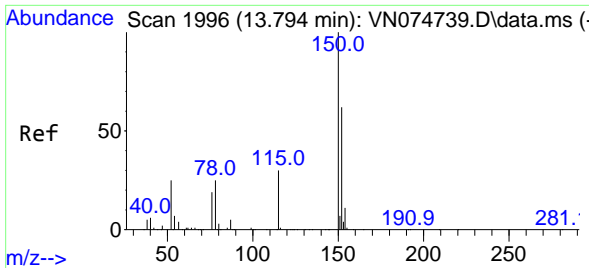


#71
 Bromoform
 Concen: 0.456 ug/l
 RT: 12.847 min Scan# 1835
 Delta R.T. 0.264 min
 Lab File: VN074816.D
 Acq: 07 Oct 2022 17:08

Tgt Ion:173 Resp: 1785

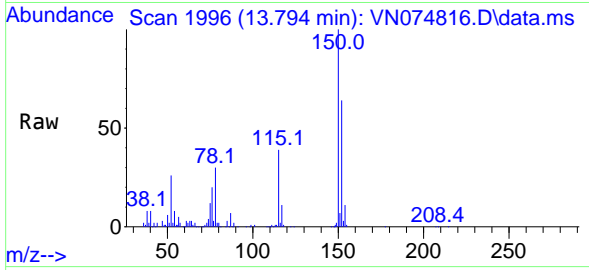
Ion	Ratio	Lower	Upper
173	100		
175	692.2	23.9	71.7#
254	0.0	0.1	0.1#





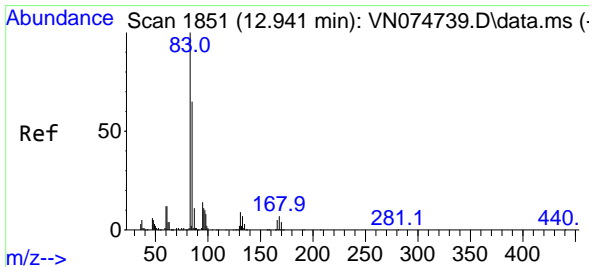
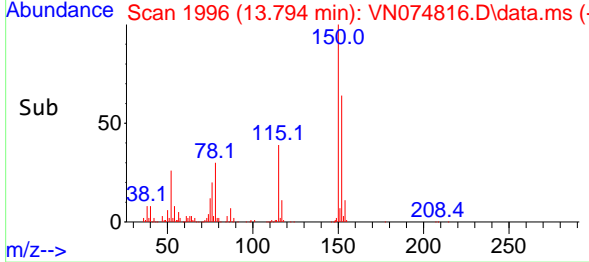
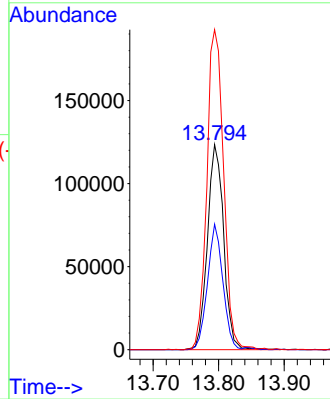
#72
 1,4-Dichlorobenzene-d4
 Concen: 50.000 ug/l
 RT: 13.794 min Scan# 1996
 Delta R.T. -0.000 min
 Lab File: VN074816.D
 Acq: 07 Oct 2022 17:08

Instrument : MSVOA_N
 ClientSampleId : TRIP-BLANK



Tgt Ion:152 Resp: 212878

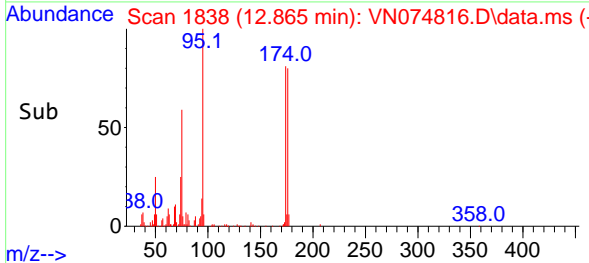
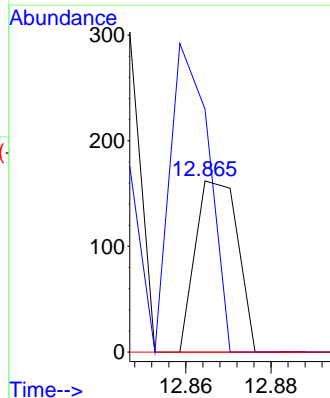
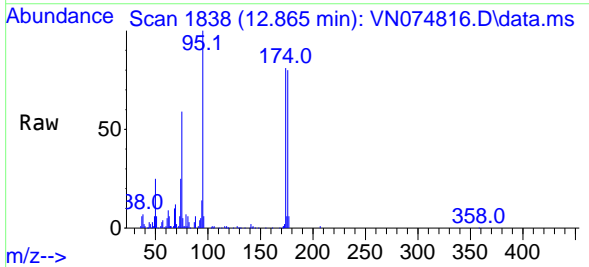
Ion	Ratio	Lower	Upper
152	100		
115	57.9	30.0	90.0
150	161.2	0.0	356.4

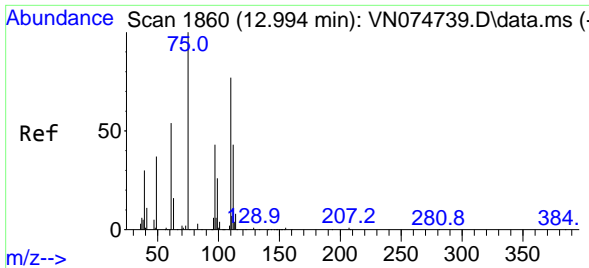


#75
 1,1,2,2-Tetrachloroethane
 Concen: Below Cal
 RT: 12.865 min Scan# 1838
 Delta R.T. -0.077 min
 Lab File: VN074816.D
 Acq: 07 Oct 2022 17:08

Tgt Ion: 83 Resp: 112

Ion	Ratio	Lower	Upper
83	100		
131	219.6	4.3	12.8#
85	0.0	32.9	98.6#

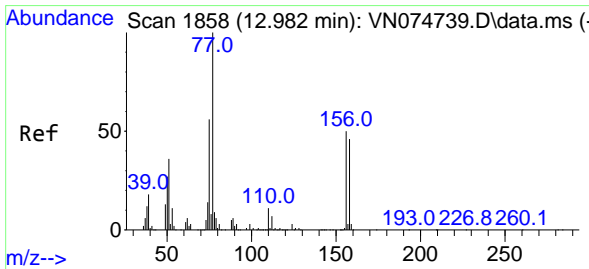
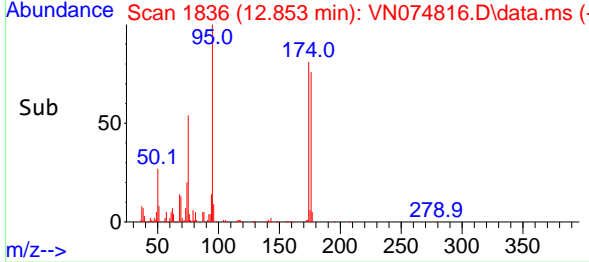
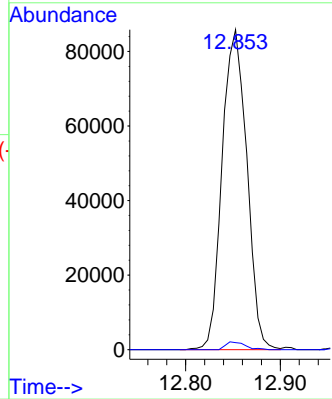
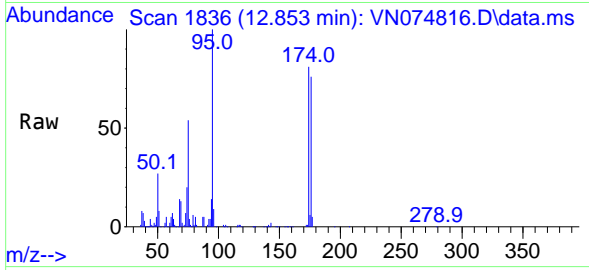




#76
 1,2,3-Trichloropropane
 Concen: 24.511 ug/l
 RT: 12.853 min Scan# 1836
 Delta R.T. -0.141 min
 Lab File: VN074816.D
 Acq: 07 Oct 2022 17:08

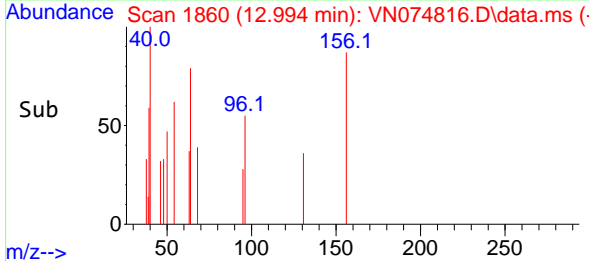
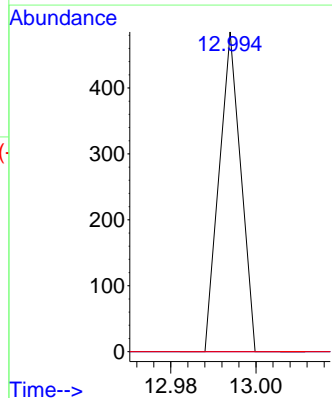
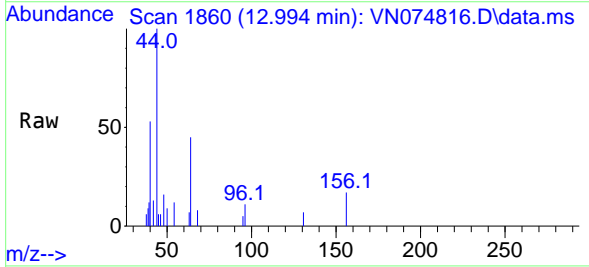
Instrument : MSVOA_N
 ClientSampleId : TRIP-BLANK

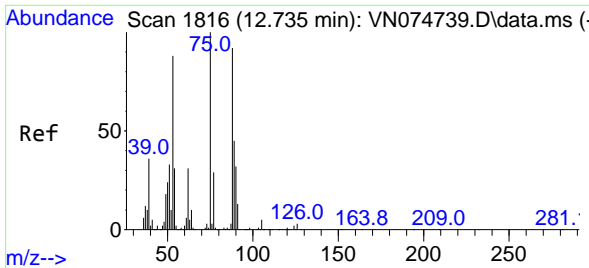
Tgt Ion: 75 Resp: 155737
 Ion Ratio Lower Upper
 75 100
 77 1.9 76.9 230.7#



#77
 Bromobenzene
 Concen: Below Cal
 RT: 12.994 min Scan# 1860
 Delta R.T. 0.012 min
 Lab File: VN074816.D
 Acq: 07 Oct 2022 17:08

Tgt Ion: 156 Resp: 171
 Ion Ratio Lower Upper
 156 100
 77 0.0 124.7 374.1#
 158 0.0 48.3 144.9#

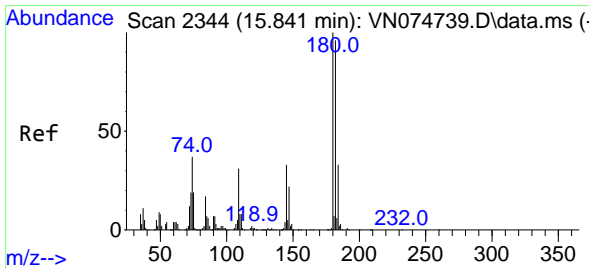
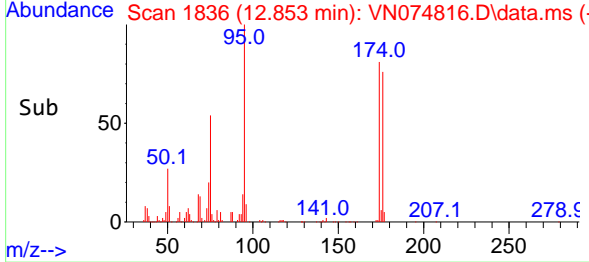
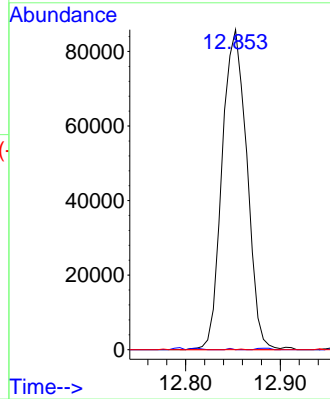
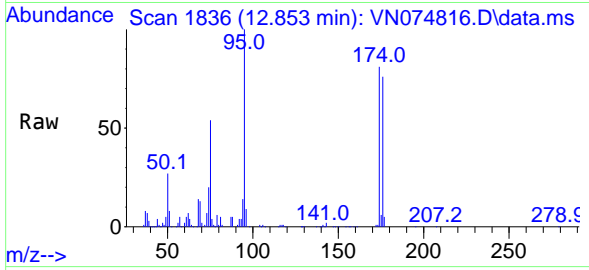




#81
 trans-1,4-Dichloro-2-butene
 Concen: 47.756 ug/l
 RT: 12.853 min Scan# 11
 Delta R.T. 0.117 min
 Lab File: VN074816.D
 Acq: 07 Oct 2022 17:08

Instrument :
 MSVOA_N
 ClientSampleId :
 TRIP-BLANK

Tgt Ion: 75 Resp: 155737
 Ion Ratio Lower Upper
 75 100
 53 0.1 71.4 107.0#
 89 0.0 32.1 48.1#



#96
 1,2,3-Trichlorobenzene
 Concen: Below Cal
 RT: 15.841 min Scan# 2344
 Delta R.T. -0.000 min
 Lab File: VN074816.D
 Acq: 07 Oct 2022 17:08

Tgt Ion:180 Resp: 82
 Ion Ratio Lower Upper
 180 100
 182 0.0 47.3 142.0#
 145 0.0 17.1 51.2#

