

Data Path : Z:\voasrv\HPCHEM1\MSVOA_N\Data\VN051724\
 Data File : VN082192.D
 Acq On : 17 May 2024 20:34
 Operator : JC\MD
 Sample : PB160967ZHE#10
 Misc : 5.0mL/MSVOA_N/WATER
 ALS Vial : 16 Sample Multiplier: 1

Instrument :
 MSVOA_N
 ClientSampleId :
 PB160967ZHE#10

Quant Time: May 17 23:17:25 2024
 Quant Method : Z:\voasrv\HPCHEM1\MSVOA_N\methods\82N051524W.M
 Quant Title : SW846 8260
 QLast Update : Thu May 16 05:21:06 2024
 Response via : Initial Calibration

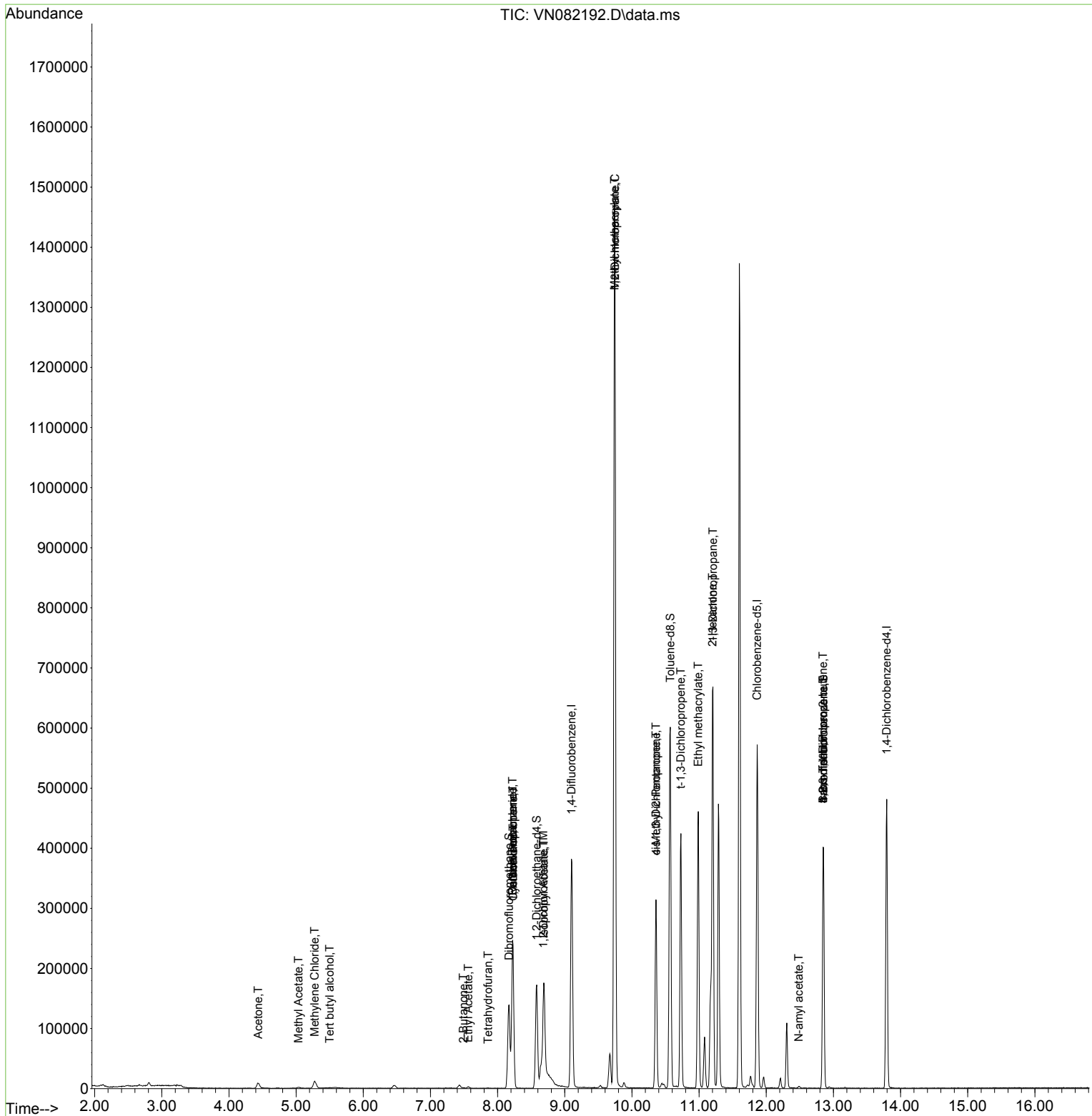
Compound	R.T.	QIon	Response	Conc	Units	Dev(Min)
Internal Standards						
1) Pentafluorobenzene	8.224	168	170386	50.000	ug/l	0.00
34) 1,4-Difluorobenzene	9.100	114	301290	50.000	ug/l	0.00
63) Chlorobenzene-d5	11.865	117	291421	50.000	ug/l	0.00
72) 1,4-Dichlorobenzene-d4	13.794	152	119245	50.000	ug/l	0.00
System Monitoring Compounds						
33) 1,2-Dichloroethane-d4	8.582	65	139193	51.736	ug/l	0.00
Spiked Amount	50.000	Range 74 - 125	Recovery	=	103.480%	
35) Dibromofluoromethane	8.171	113	97381	52.542	ug/l	0.00
Spiked Amount	50.000	Range 75 - 124	Recovery	=	105.080%	
50) Toluene-d8	10.571	98	396010	55.731	ug/l	0.00
Spiked Amount	50.000	Range 86 - 113	Recovery	=	111.460%	
62) 4-Bromofluorobenzene	12.853	95	130348	51.395	ug/l	0.00
Spiked Amount	50.000	Range 64 - 133	Recovery	=	102.780%	
Target Compounds						
						Qvalue
11) Tert butyl alcohol	5.500	59	238	0.551	ug/l #	71
16) Acetone	4.436	43	17633	15.977	ug/l	99
18) Methyl Acetate	5.036	43	3297	1.200	ug/l #	59
20) Methylene Chloride	5.277	84	8048	3.614	ug/l #	87
25) 2-Butanone	7.488	43	1660	0.992	ug/l	91
29) Tetrahydrofuran	7.859	42	370	0.344	ug/l #	29
31) Cyclohexane	8.230	56	4941	1.150	ug/l #	56
36) 1,1-Dichloropropene	8.230	75	16593	5.338	ug/l #	48
37) Ethyl Acetate	7.565	43	4133	1.188	ug/l #	74
38) Carbon Tetrachloride	8.224	117	17871	5.671	ug/l #	15
42) 1,2-Dichloroethane	8.682	62	978	0.274	ug/l #	73
43) Isopropyl Acetate	8.688	43	290656	47.153	ug/l #	69
45) 1,2-Dichloropropane	9.747	63	1478	0.618	ug/l #	45
48) Methyl methacrylate	9.741	41	151189	51.474	ug/l #	37
51) 4-Methyl-2-Pentanone	10.359	43	128641	36.731	ug/l #	43
53) t-1,3-Dichloropropene	10.729	75	874	0.255	ug/l	94
54) cis-1,3-Dichloropropene	10.359	75	46931	12.933	ug/l #	75
56) Ethyl methacrylate	10.988	69	1310	0.382	ug/l #	1
57) 1,3-Dichloropropane	11.206	76	6153	1.628	ug/l #	42
59) 2-Hexanone	11.200	43	101023	39.395	ug/l #	47
71) Bromoform	12.847	173	508	0.998	ug/l #	28
74) N-amyl acetate	12.482	43	2001	0.384	ug/l #	41
76) 1,2,3-Trichloropropane	12.847	75	77645	30.936	ug/l #	1
81) trans-1,4-Dichloro-2-b...	12.847	75	77645	72.359	ug/l #	12

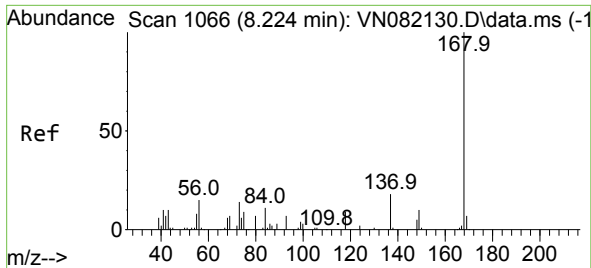
(#) = qualifier out of range (m) = manual integration (+) = signals summed

Data Path : Z:\voasrv\HPCHEM1\MSVOA_N\Data\VN051724\
 Data File : VN082192.D
 Acq On : 17 May 2024 20:34
 Operator : JC\MD
 Sample : PB160967ZHE#10
 Misc : 5.0mL/MSVOA_N/WATER
 ALS Vial : 16 Sample Multiplier: 1

Instrument :
 MSVOA_N
 ClientSampleId :
 PB160967ZHE#10

Quant Time: May 17 23:17:25 2024
 Quant Method : Z:\voasrv\HPCHEM1\MSVOA_N\methods\82N051524W.M
 Quant Title : SW846 8260
 QLast Update : Thu May 16 05:21:06 2024
 Response via : Initial Calibration

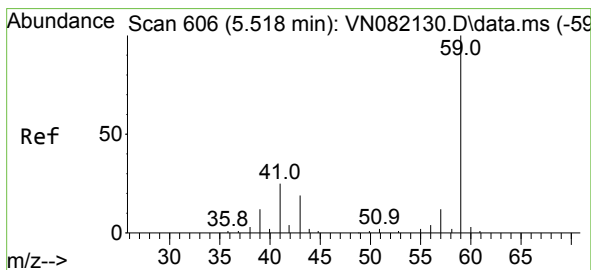
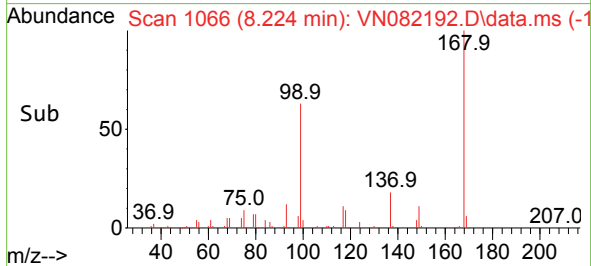
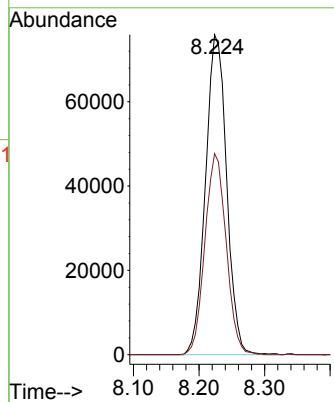
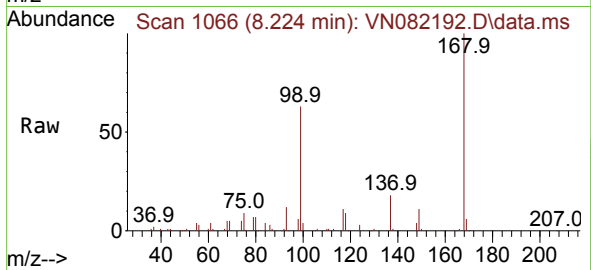




#1
 Pentafluorobenzene
 Concen: 50.000 ug/l
 RT: 8.224 min Scan# 1066
 Delta R.T. -0.000 min
 Lab File: VN082192.D
 Acq: 17 May 2024 20:34

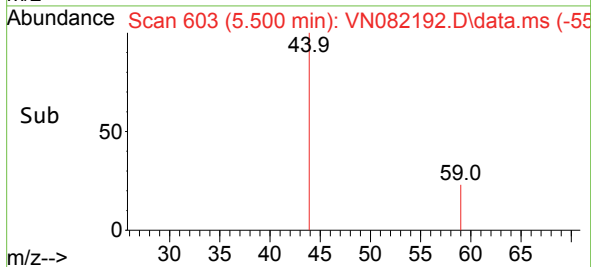
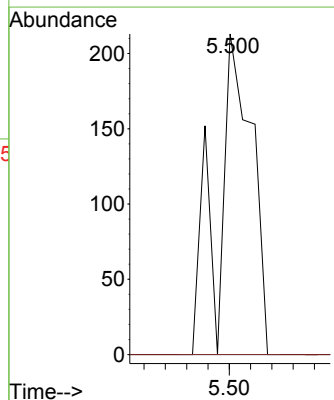
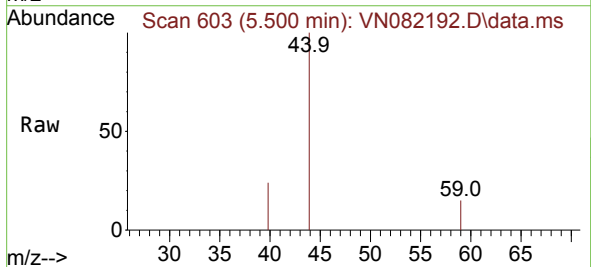
Instrument : MSVOA_N
 ClientSampleId : PB160967ZHE#10

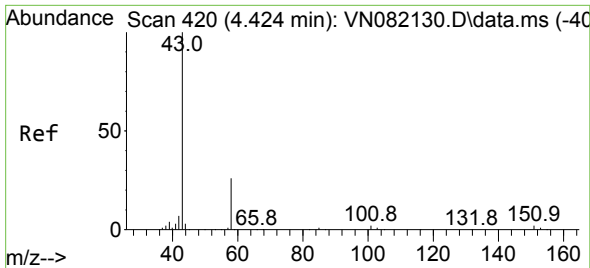
Tgt Ion:168 Resp: 170386
 Ion Ratio Lower Upper
 168 100
 99 62.8 48.2 72.4



#11
 Tert butyl alcohol
 Concen: 0.551 ug/l
 RT: 5.500 min Scan# 603
 Delta R.T. -0.018 min
 Lab File: VN082192.D
 Acq: 17 May 2024 20:34

Tgt Ion: 59 Resp: 238
 Ion Ratio Lower Upper
 59 100
 57 0.0 8.9 13.3#

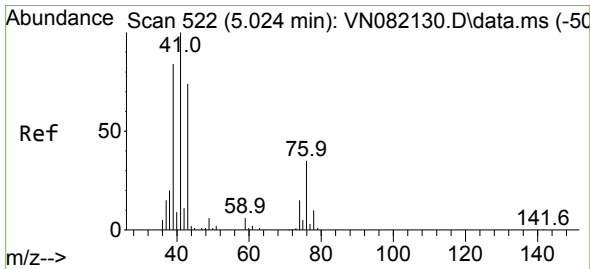
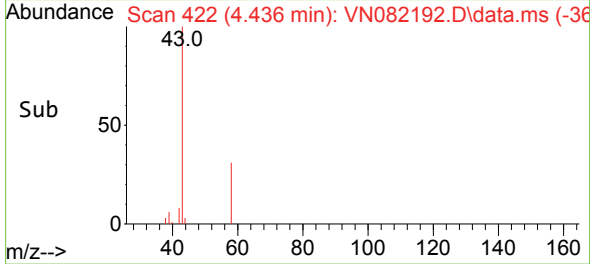
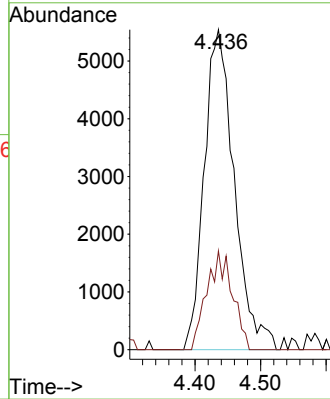
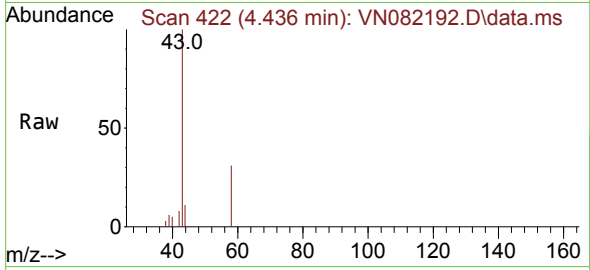




#16
 Acetone
 Concen: 15.977 ug/l
 RT: 4.436 min Scan# 41
 Delta R.T. 0.012 min
 Lab File: VN082192.D
 Acq: 17 May 2024 20:34

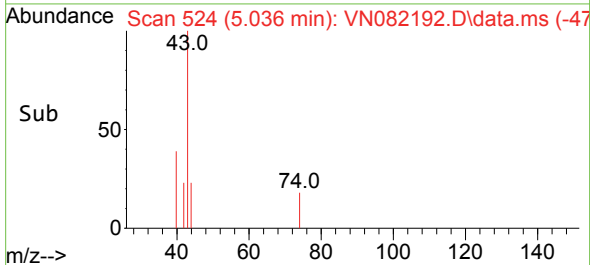
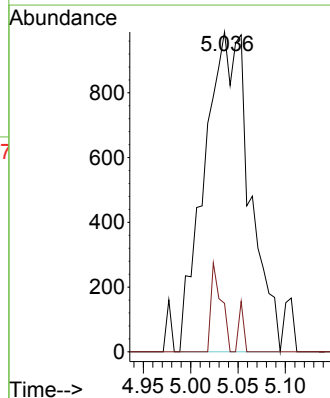
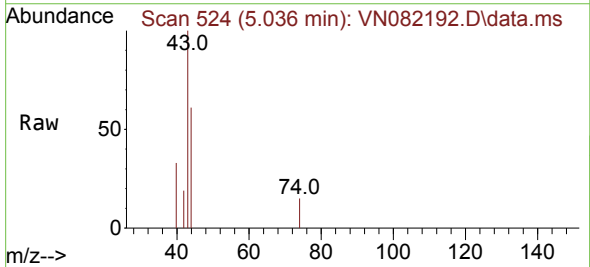
Instrument :
 MSVOA_N
 ClientSampleId :
 PB160967ZHE#10

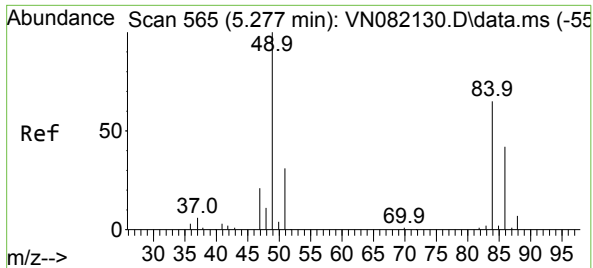
Tgt Ion: 43 Resp: 17633
 Ion Ratio Lower Upper
 43 100
 58 30.8 25.2 37.8



#18
 Methyl Acetate
 Concen: 1.200 ug/l
 RT: 5.036 min Scan# 524
 Delta R.T. 0.012 min
 Lab File: VN082192.D
 Acq: 17 May 2024 20:34

Tgt Ion: 43 Resp: 3297
 Ion Ratio Lower Upper
 43 100
 74 6.3 22.2 33.2#

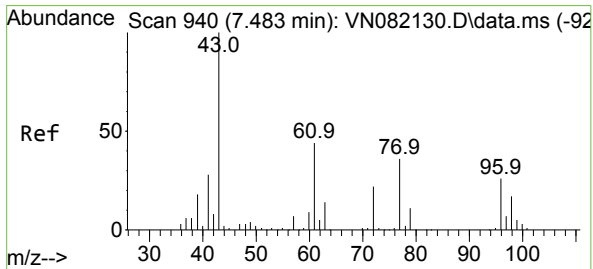
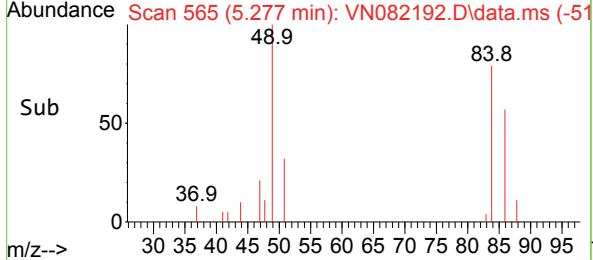
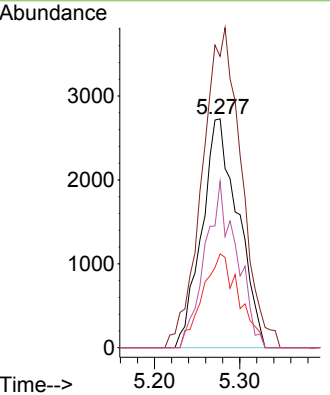
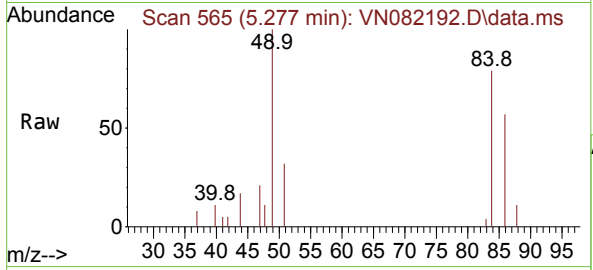




#20
 Methylene Chloride
 Concen: 3.614 ug/l
 RT: 5.277 min Scan# 501
 Delta R.T. -0.000 min
 Lab File: VN082192.D
 Acq: 17 May 2024 20:34

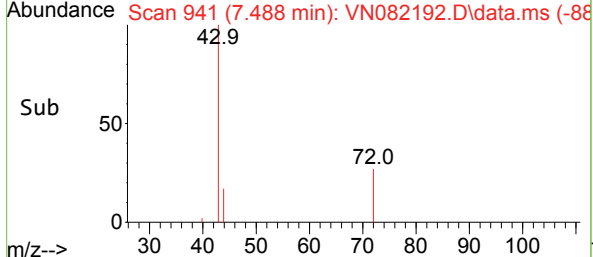
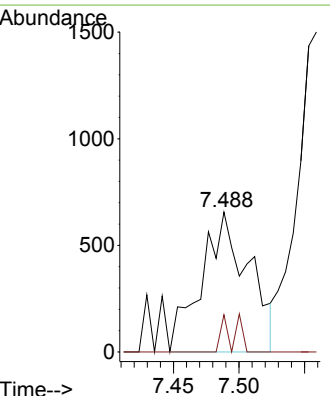
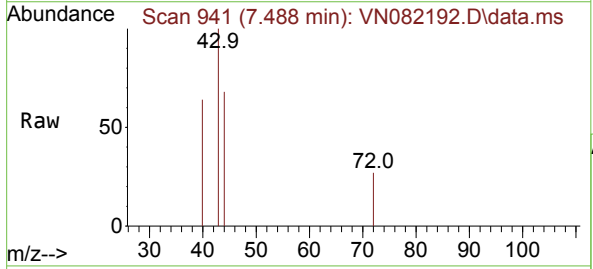
Instrument : MSVOA_N
 ClientSampleId : PB160967ZHE#10

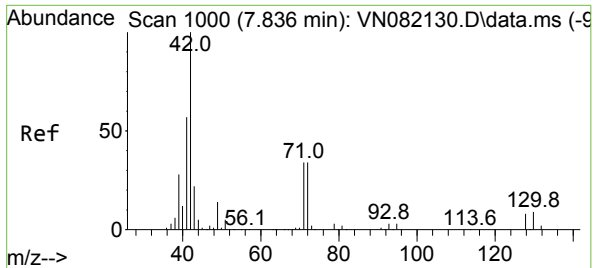
Tgt Ion	Resp	Lower	Upper
84	100		
49	121.7	84.9	127.3
51	41.0	27.0	40.6#
86	72.7	52.3	78.5



#25
 2-Butanone
 Concen: 0.992 ug/l
 RT: 7.488 min Scan# 941
 Delta R.T. 0.006 min
 Lab File: VN082192.D
 Acq: 17 May 2024 20:34

Tgt Ion	Resp	Lower	Upper
43	100		
72	26.5	25.3	37.9

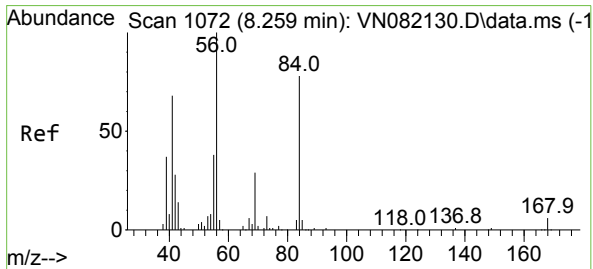
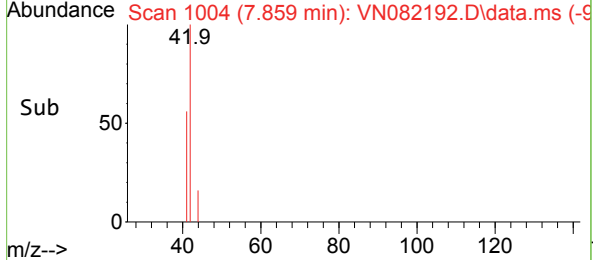
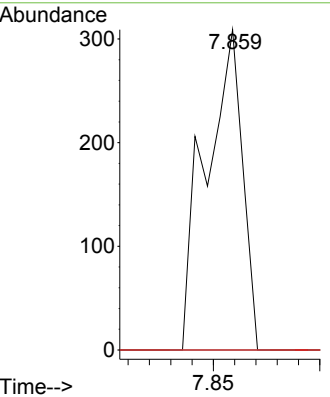
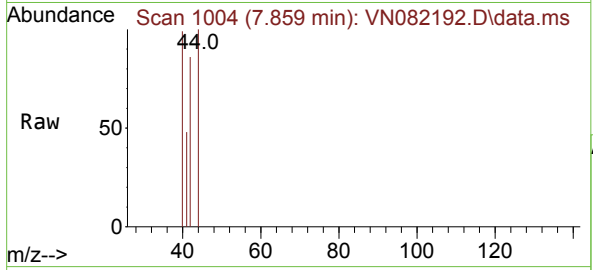




#29
 Tetrahydrofuran
 Concen: 0.344 ug/l
 RT: 7.859 min Scan# 1004
 Delta R.T. 0.023 min
 Lab File: VN082192.D
 Acq: 17 May 2024 20:34

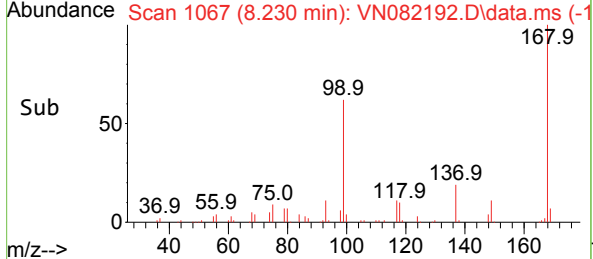
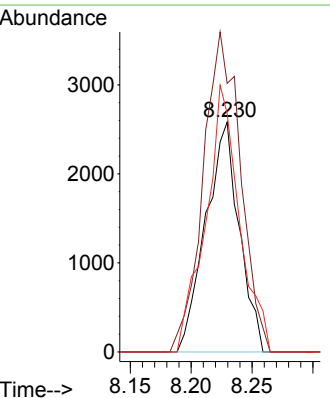
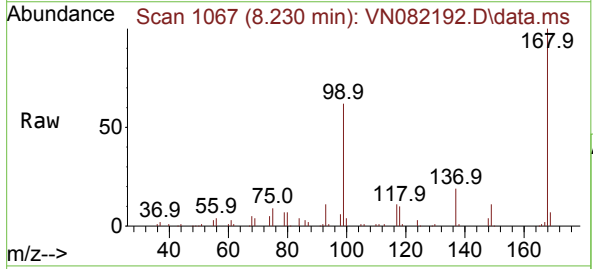
Instrument : MSVOA_N
 ClientSampleId : PB160967ZHE#10

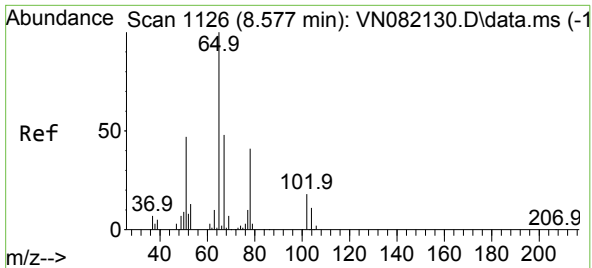
Tgt Ion	Resp	Lower	Upper
42	100		
72	0.0	39.3	58.9#
71	0.0	37.4	56.0#



#31
 Cyclohexane
 Concen: 1.150 ug/l
 RT: 8.230 min Scan# 1067
 Delta R.T. -0.029 min
 Lab File: VN082192.D
 Acq: 17 May 2024 20:34

Tgt Ion	Resp	Lower	Upper
56	100		
69	116.9	24.4	36.6#
84	103.7	77.0	115.4

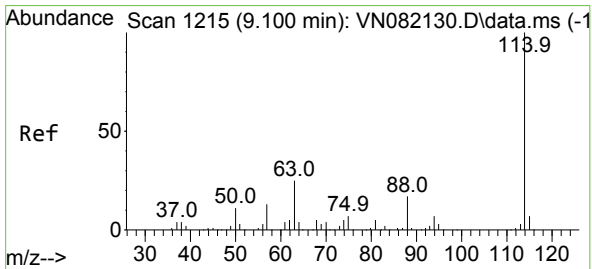
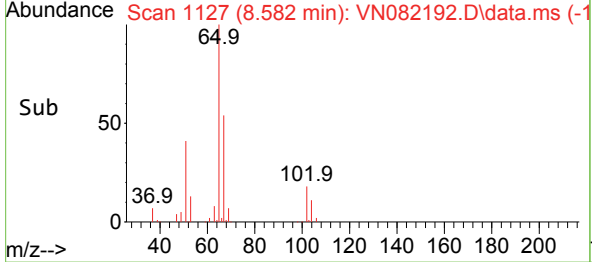
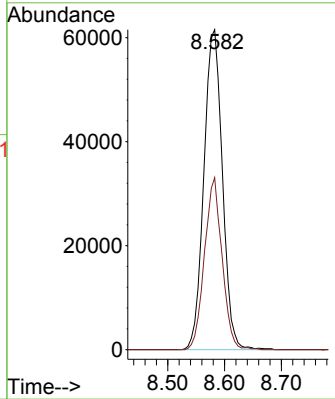
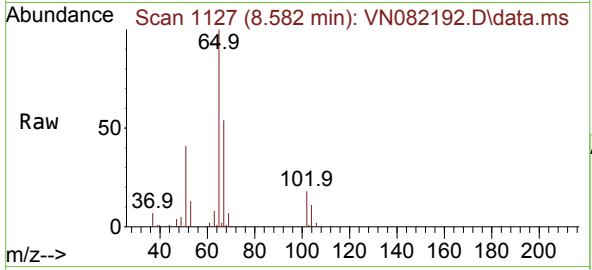




#33
 1,2-Dichloroethane-d4
 Concen: 51.736 ug/l
 RT: 8.582 min Scan# 1127
 Delta R.T. 0.006 min
 Lab File: VN082192.D
 Acq: 17 May 2024 20:34

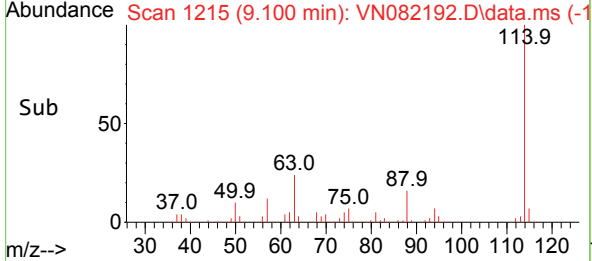
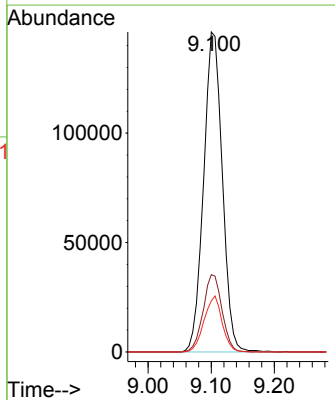
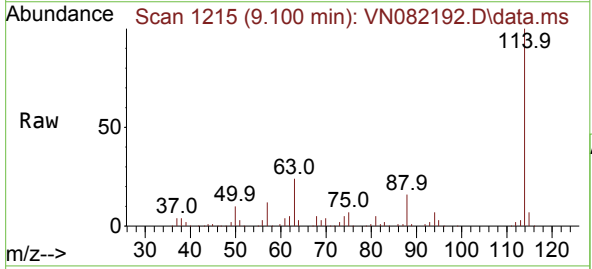
Instrument : MSVOA_N
 ClientSampleId : PB160967ZHE#10

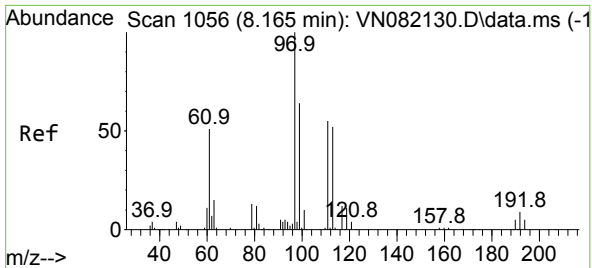
Tgt Ion: 65 Resp: 139193
 Ion Ratio Lower Upper
 65 100
 67 51.0 0.0 103.0



#34
 1,4-Difluorobenzene
 Concen: 50.000 ug/l
 RT: 9.100 min Scan# 1215
 Delta R.T. -0.000 min
 Lab File: VN082192.D
 Acq: 17 May 2024 20:34

Tgt Ion: 114 Resp: 301290
 Ion Ratio Lower Upper
 114 100
 63 24.1 0.0 41.0
 88 16.0 0.0 31.4

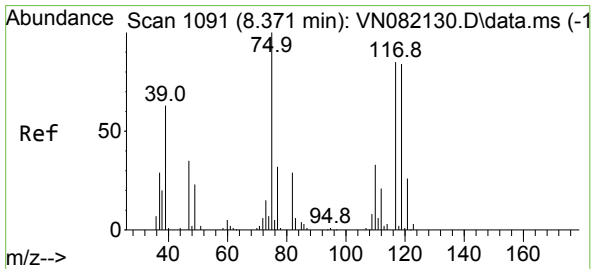
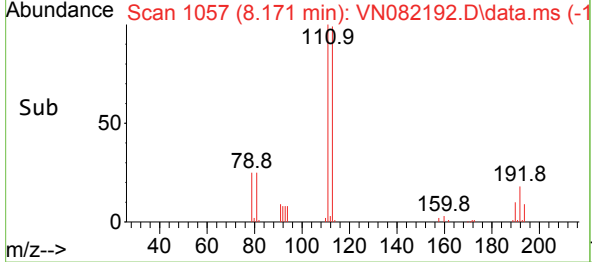
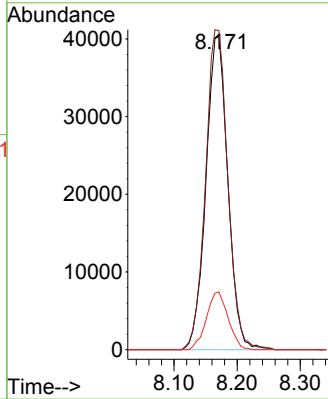
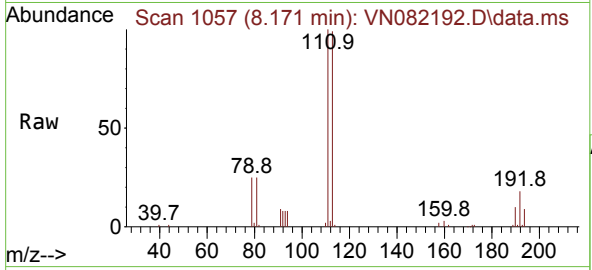




#35
 Dibromofluoromethane
 Concen: 52.542 ug/l
 RT: 8.171 min Scan# 1067
 Delta R.T. 0.006 min
 Lab File: VN082192.D
 Acq: 17 May 2024 20:34

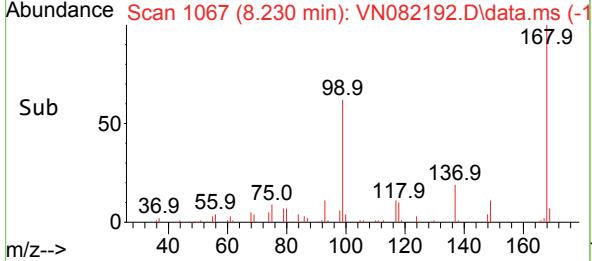
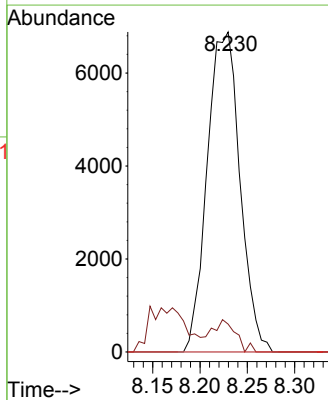
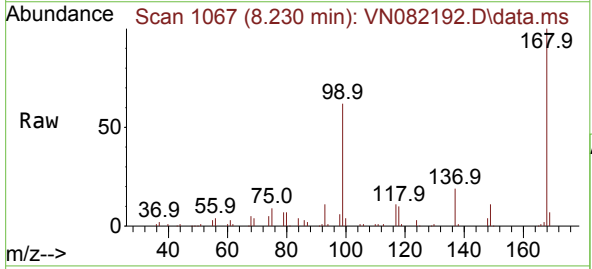
Instrument : MSVOA_N
 ClientSampleId : PB160967ZHE#10

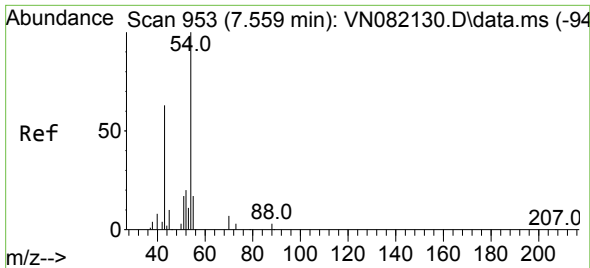
Tgt Ion	Resp	Lower	Upper
113	97381		
113	100		
111	103.9	83.4	125.2
192	18.2	14.0	21.0



#36
 1,1-Dichloropropene
 Concen: 5.338 ug/l
 RT: 8.230 min Scan# 1067
 Delta R.T. -0.141 min
 Lab File: VN082192.D
 Acq: 17 May 2024 20:34

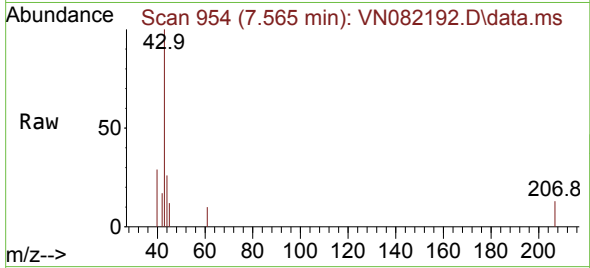
Tgt Ion	Resp	Lower	Upper
75	16593		
75	100		
110	7.6	17.8	53.5#
77	0.0	25.0	37.4#



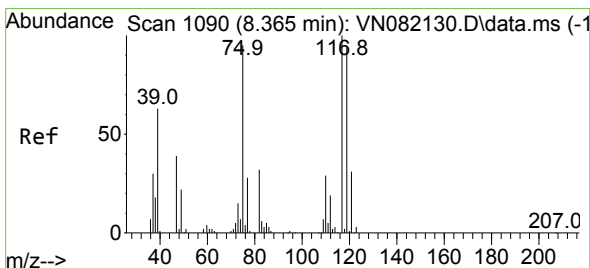
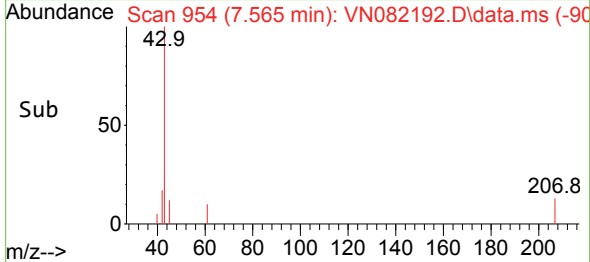
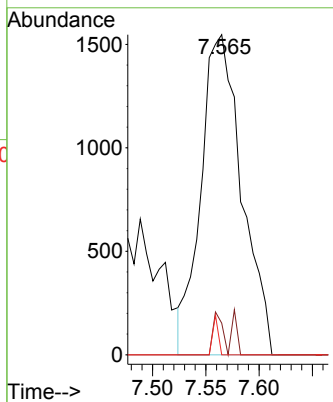


#37
 Ethyl Acetate
 Concen: 1.188 ug/l
 RT: 7.565 min Scan# 91
 Delta R.T. 0.006 min
 Lab File: VN082192.D
 Acq: 17 May 2024 20:34

Instrument : MSVOA_N
 ClientSampleId : PB160967ZHE#10

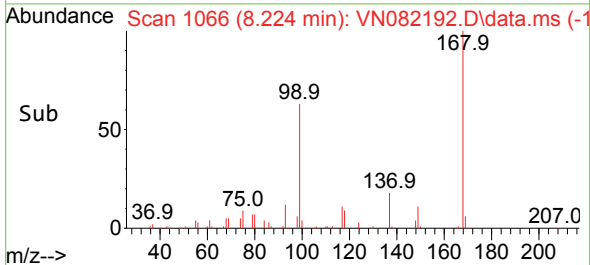
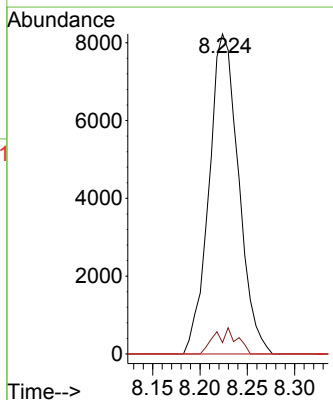
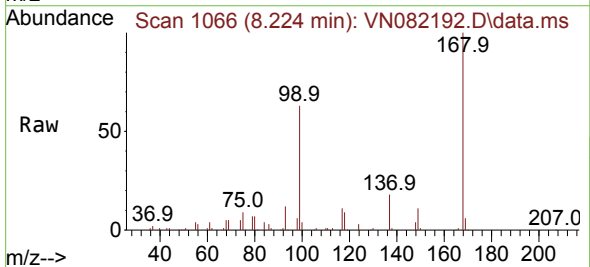


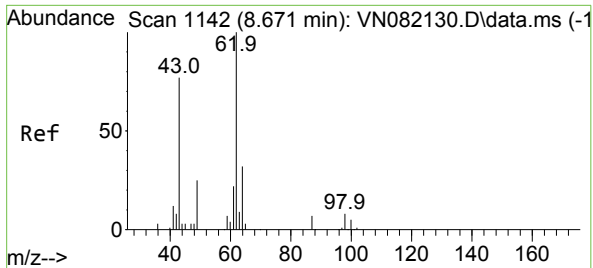
Tgt Ion	Resp	Lower	Upper
43	4133		
43	100		
61	3.1	11.3	16.9#
70	1.6	8.7	13.1#



#38
 Carbon Tetrachloride
 Concen: 5.671 ug/l
 RT: 8.224 min Scan# 1066
 Delta R.T. -0.141 min
 Lab File: VN082192.D
 Acq: 17 May 2024 20:34

Tgt Ion	Resp	Lower	Upper
117	17871		
117	100		
119	3.5	76.5	114.7#
121	0.0	23.9	35.9#

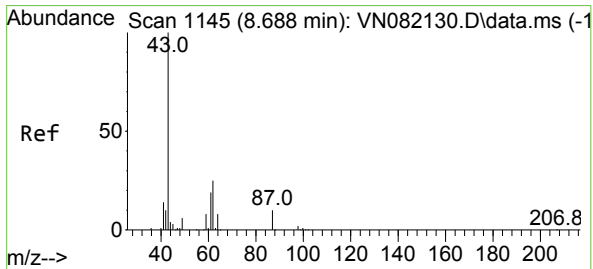
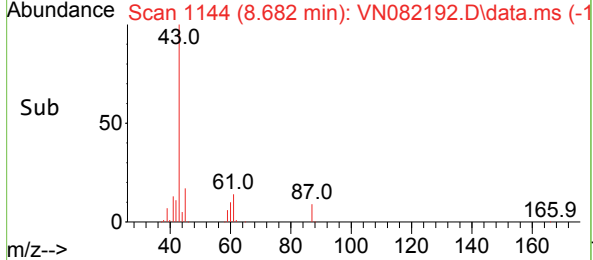
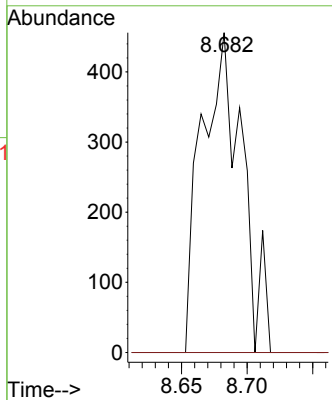
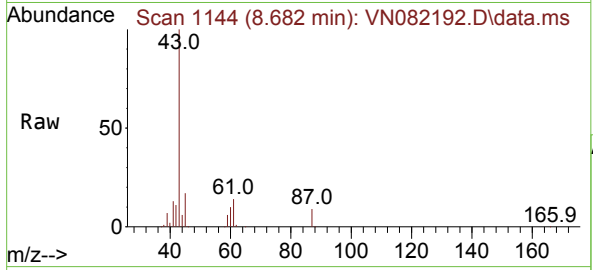




#42
 1,2-Dichloroethane
 Concen: 0.274 ug/l
 RT: 8.682 min Scan# 1144
 Delta R.T. 0.012 min
 Lab File: VN082192.D
 Acq: 17 May 2024 20:34

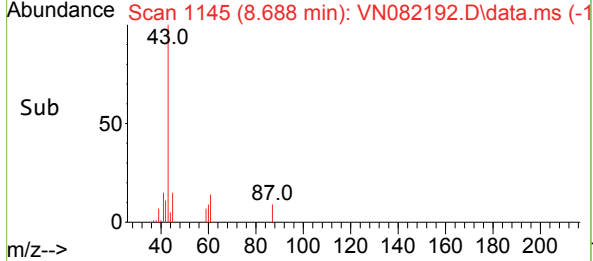
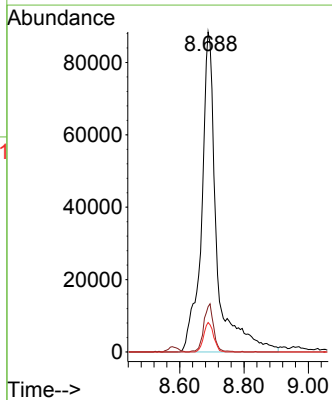
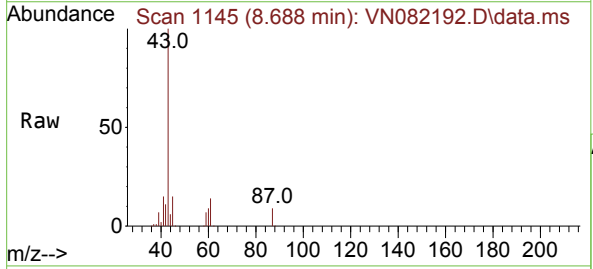
Instrument : MSVOA_N
 ClientSampleId : PB160967ZHE#10

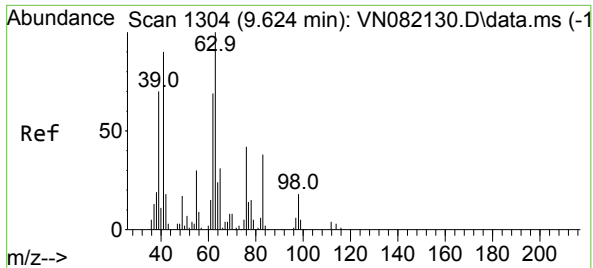
Tgt Ion	Resp	Lower	Upper
62	100		
98	0.0	0.0	19.6



#43
 Isopropyl Acetate
 Concen: 47.153 ug/l
 RT: 8.688 min Scan# 1145
 Delta R.T. -0.000 min
 Lab File: VN082192.D
 Acq: 17 May 2024 20:34

Tgt Ion	Resp	Lower	Upper
43	100		
61	9.8	22.8	34.2#
87	6.0	12.0	18.0#

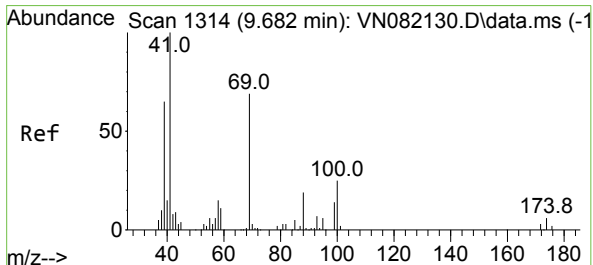
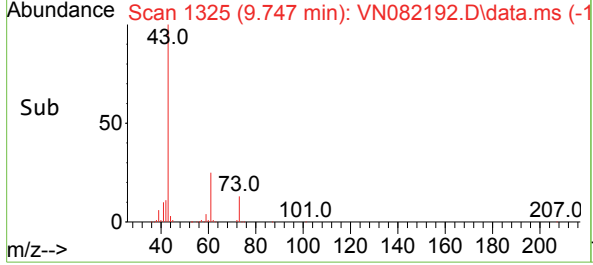
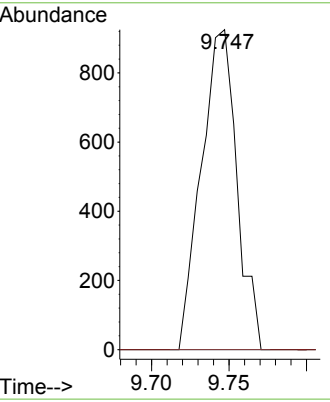
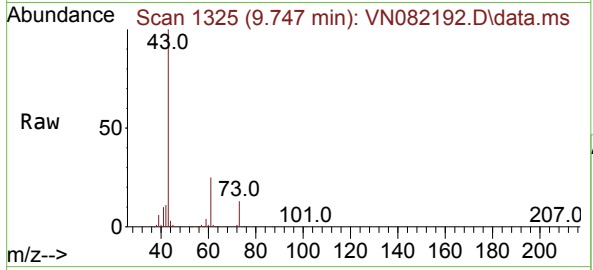




#45
 1,2-Dichloropropane
 Concen: 0.618 ug/l
 RT: 9.747 min Scan# 11
 Delta R.T. 0.123 min
 Lab File: VN082192.D
 Acq: 17 May 2024 20:34

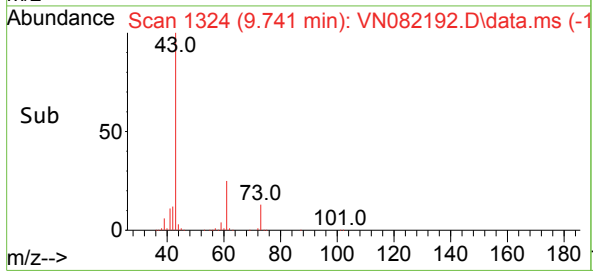
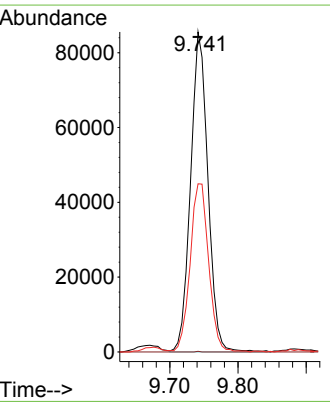
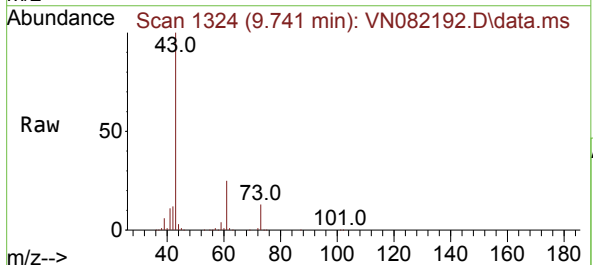
Instrument : MSVOA_N
 ClientSampleId : PB160967ZHE#10

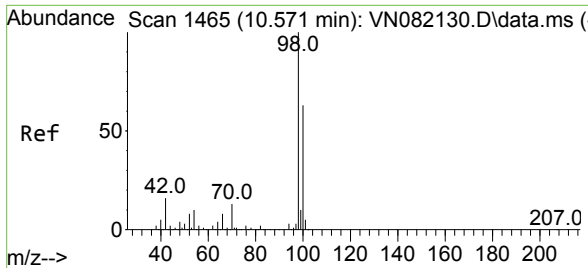
Tgt Ion: 63 Resp: 1478
 Ion Ratio Lower Upper
 63 100
 65 0.0 24.1 36.1#



#48
 Methyl methacrylate
 Concen: 51.474 ug/l
 RT: 9.741 min Scan# 1324
 Delta R.T. 0.059 min
 Lab File: VN082192.D
 Acq: 17 May 2024 20:34

Tgt Ion: 41 Resp: 151189
 Ion Ratio Lower Upper
 41 100
 69 0.0 77.9 116.9#
 39 56.3 50.9 76.3

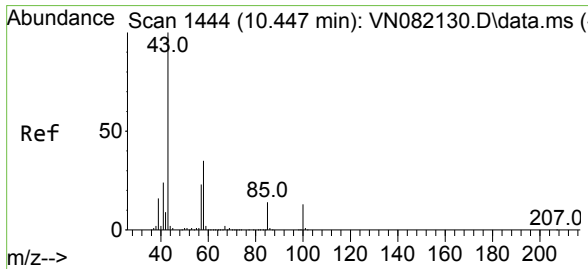
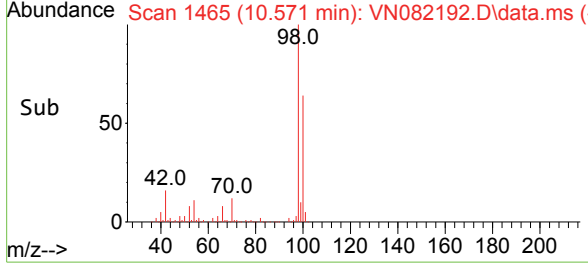
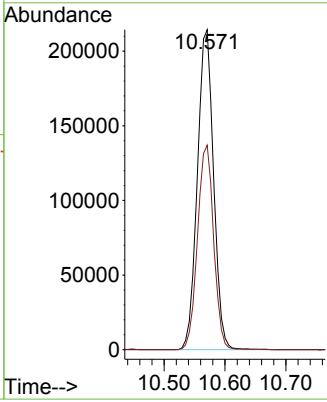
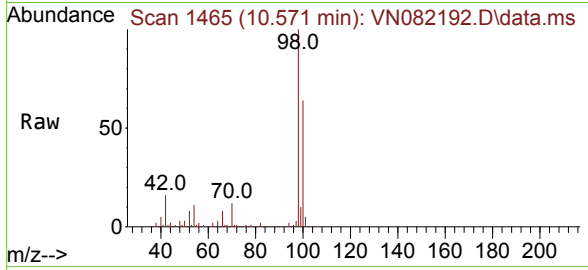




#50
 Toluene-d8
 Concen: 55.731 ug/l
 RT: 10.571 min Scan# 1465
 Delta R.T. -0.000 min
 Lab File: VN082192.D
 Acq: 17 May 2024 20:34

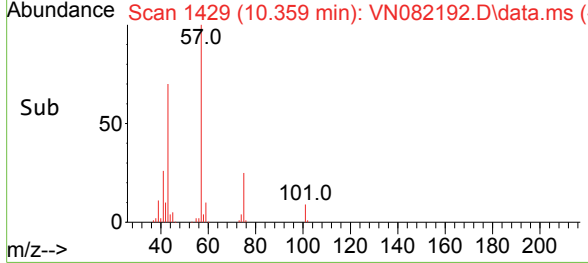
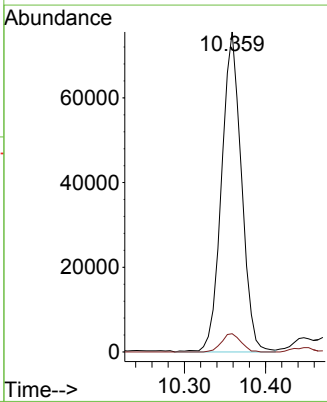
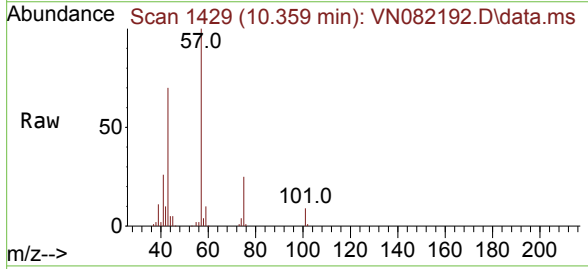
Instrument : MSVOA_N
 ClientSampleId : PB160967ZHE#10

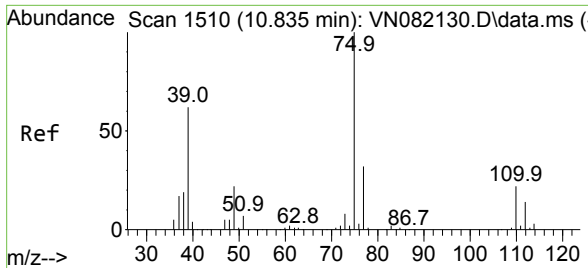
Tgt Ion: 98 Resp: 396010
 Ion Ratio Lower Upper
 98 100
 100 63.6 51.8 77.6



#51
 4-Methyl-2-Pentanone
 Concen: 36.731 ug/l
 RT: 10.359 min Scan# 1429
 Delta R.T. -0.088 min
 Lab File: VN082192.D
 Acq: 17 May 2024 20:34

Tgt Ion: 43 Resp: 128641
 Ion Ratio Lower Upper
 43 100
 58 5.6 33.2 49.8#

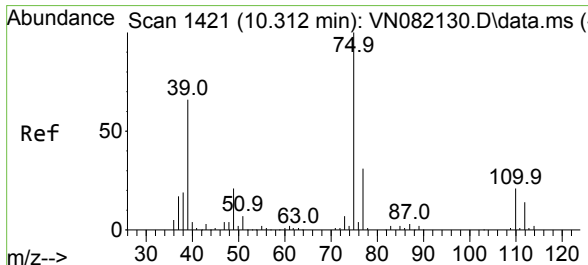
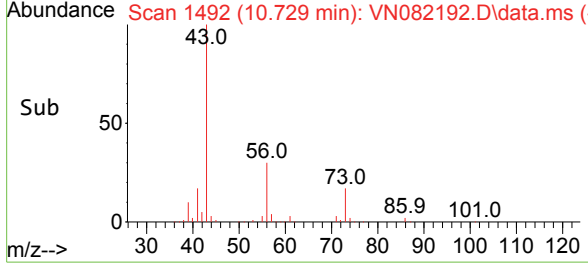
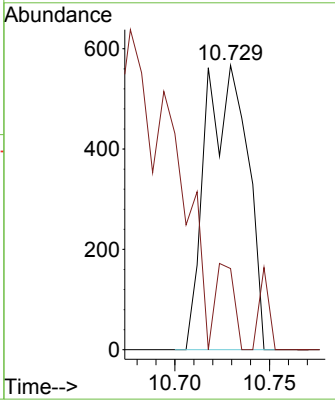
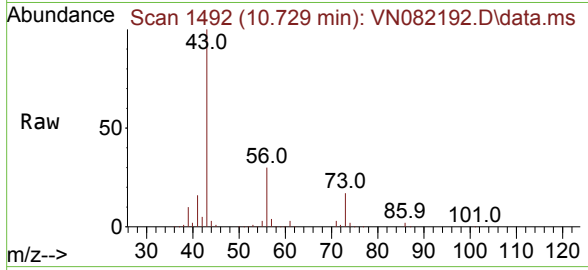




#53
 t-1,3-Dichloropropene
 Concen: 0.255 ug/l
 RT: 10.729 min Scan# 1492
 Delta R.T. -0.106 min
 Lab File: VN082192.D
 Acq: 17 May 2024 20:34

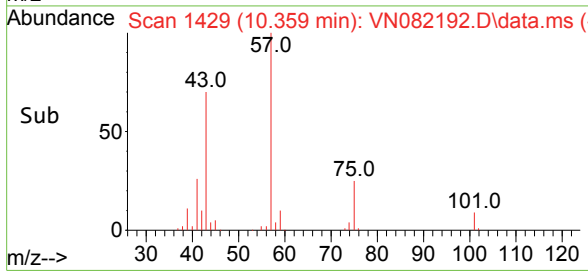
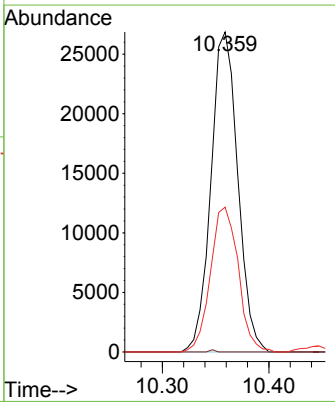
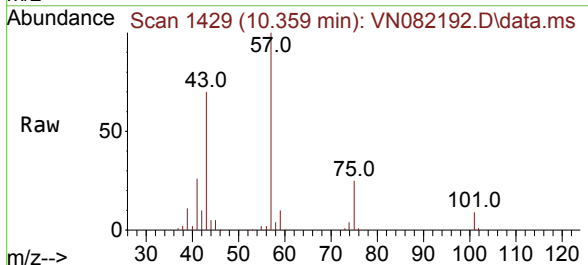
Instrument : MSVOA_N
 ClientSampleId : PB160967ZHE#10

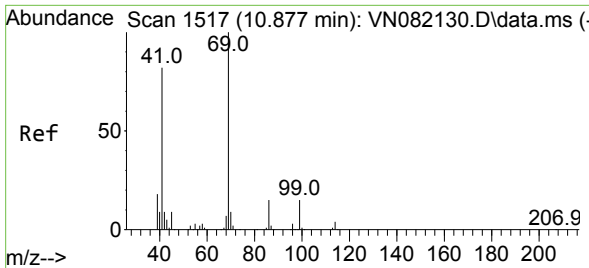
Tgt Ion: 75 Resp: 874
 Ion Ratio Lower Upper
 75 100
 77 28.6 25.4 38.0



#54
 cis-1,3-Dichloropropene
 Concen: 12.933 ug/l
 RT: 10.359 min Scan# 1429
 Delta R.T. 0.047 min
 Lab File: VN082192.D
 Acq: 17 May 2024 20:34

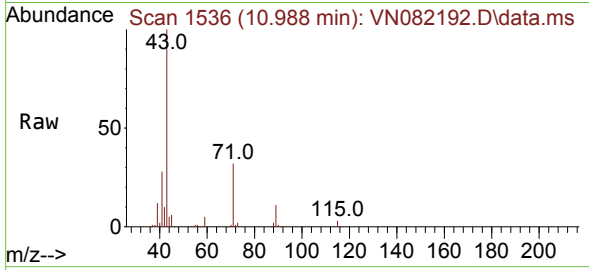
Tgt Ion: 75 Resp: 46931
 Ion Ratio Lower Upper
 75 100
 77 0.0 25.0 37.4#
 39 45.3 34.8 52.2



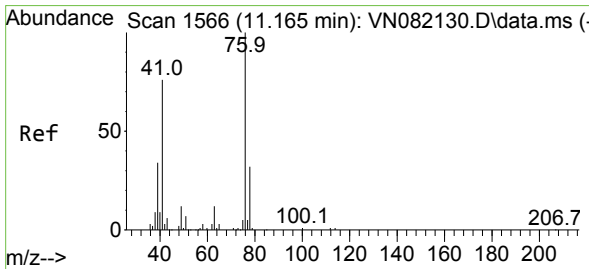
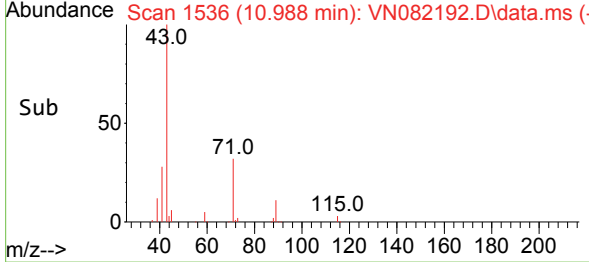
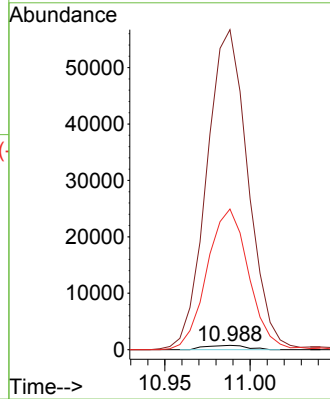


#56
 Ethyl methacrylate
 Concen: 0.382 ug/l
 RT: 10.988 min Scan# 11
 Delta R.T. 0.112 min
 Lab File: VN082192.D
 Acq: 17 May 2024 20:34

Instrument :
 MSVOA_N
 ClientSampleId :
 PB160967ZHE#10

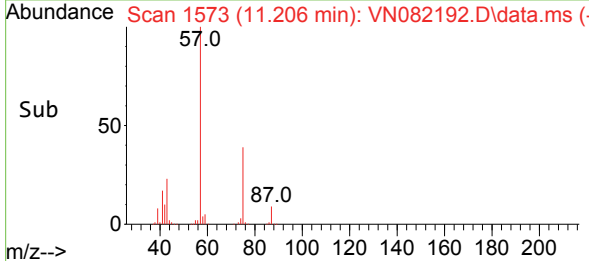
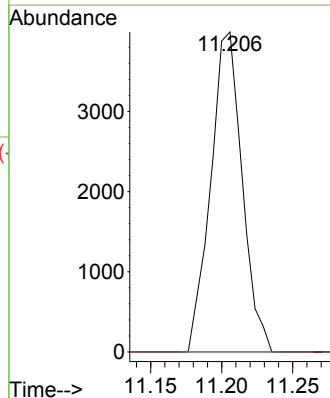
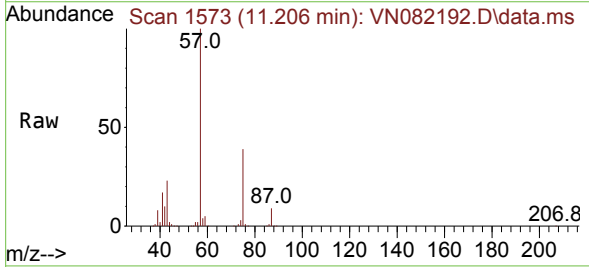


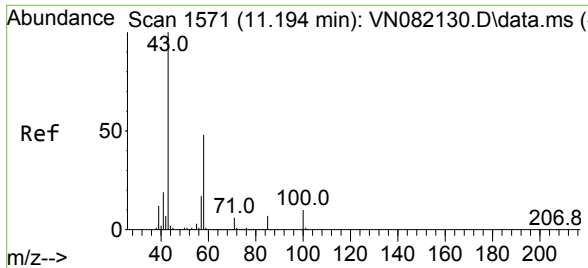
Tgt Ion: 69 Resp: 1310
 Ion Ratio Lower Upper
 69 100
 41 7339.8 46.6 70.0#
 39 3259.9 26.5 39.7#



#57
 1,3-Dichloropropane
 Concen: 1.628 ug/l
 RT: 11.206 min Scan# 1573
 Delta R.T. 0.041 min
 Lab File: VN082192.D
 Acq: 17 May 2024 20:34

Tgt Ion: 76 Resp: 6153
 Ion Ratio Lower Upper
 76 100
 78 0.0 25.8 38.6#

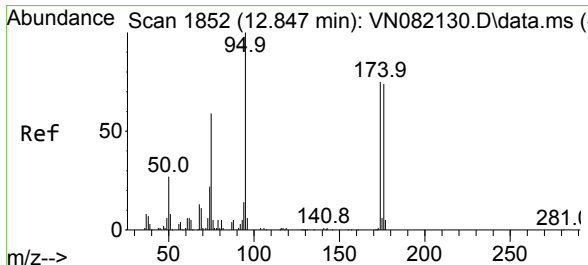
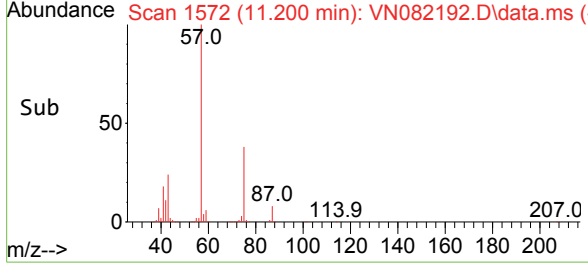
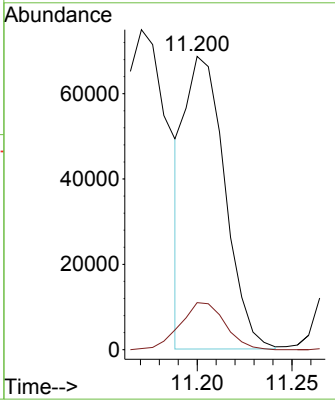
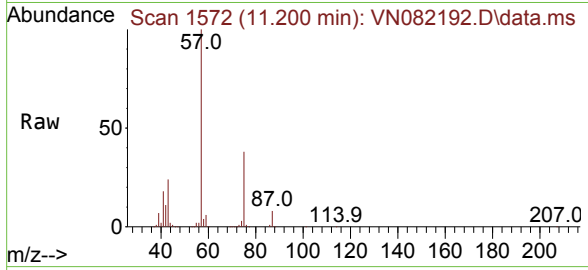




#59
 2-Hexanone
 Concen: 39.395 ug/l
 RT: 11.200 min Scan# 111
 Delta R.T. 0.006 min
 Lab File: VN082192.D
 Acq: 17 May 2024 20:34

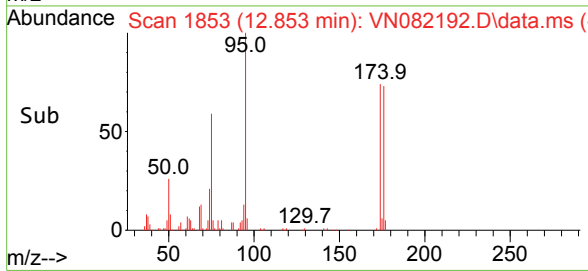
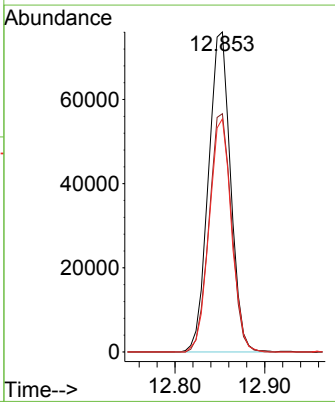
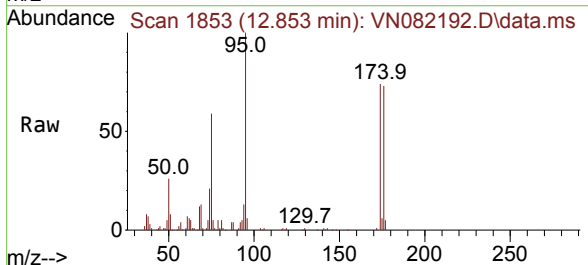
Instrument : MSVOA_N
 ClientSampleId : PB160967ZHE#10

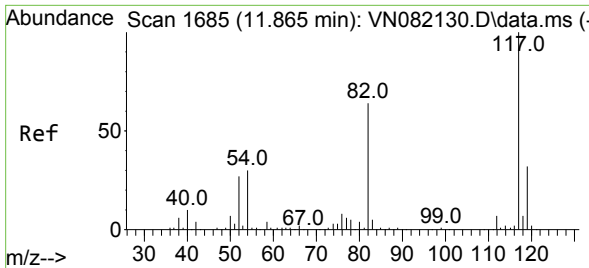
Tgt Ion: 43 Resp: 101023
 Ion Ratio Lower Upper
 43 100
 58 18.1 28.3 84.9#



#62
 4-Bromofluorobenzene
 Concen: 51.395 ug/l
 RT: 12.853 min Scan# 1853
 Delta R.T. 0.006 min
 Lab File: VN082192.D
 Acq: 17 May 2024 20:34

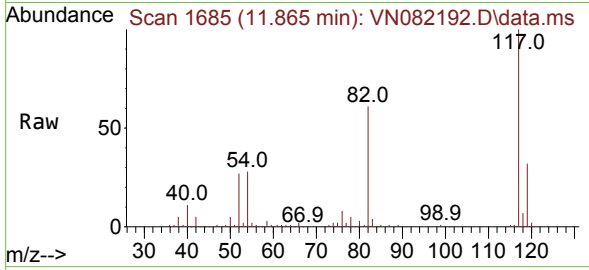
Tgt Ion: 95 Resp: 130348
 Ion Ratio Lower Upper
 95 100
 174 75.4 0.0 160.6
 176 73.2 0.0 152.8





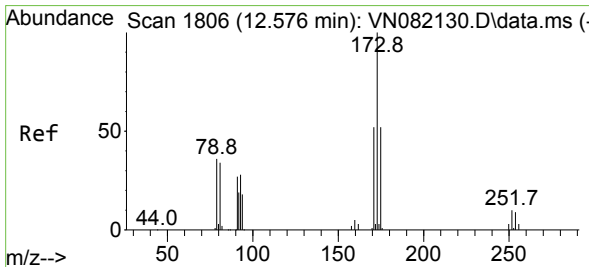
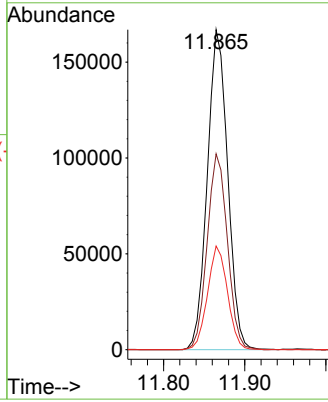
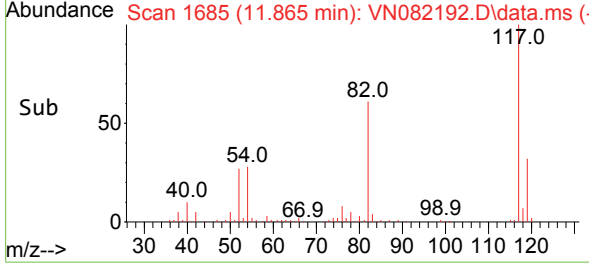
#63
 Chlorobenzene-d5
 Concen: 50.000 ug/l
 RT: 11.865 min Scan# 117
 Delta R.T. -0.000 min
 Lab File: VN082192.D
 Acq: 17 May 2024 20:34

Instrument : MSVOA_N
 ClientSampleId : PB160967ZHE#10

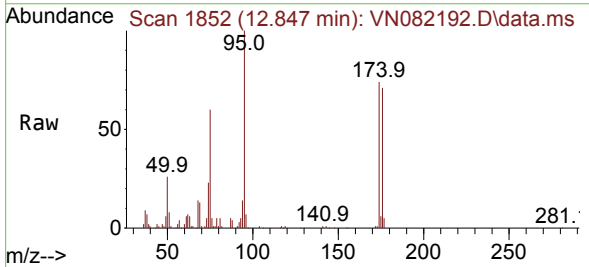


Tgt Ion:117 Resp: 291421

Ion	Ratio	Lower	Upper
117	100		
82	61.2	44.6	66.8
119	32.4	25.9	38.9

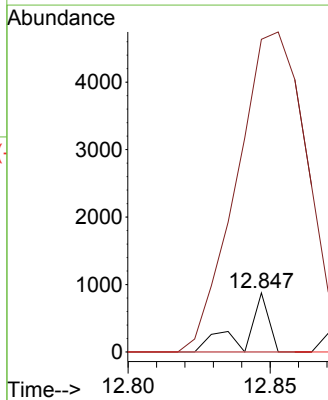
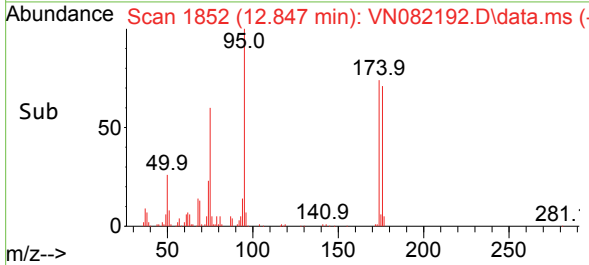


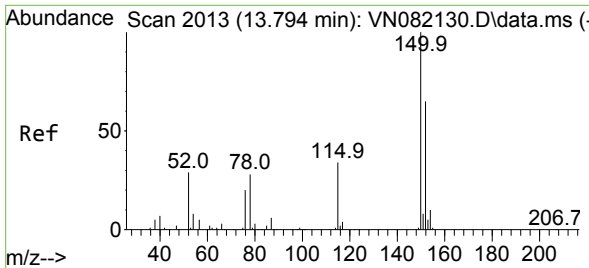
#71
 Bromoform
 Concen: 0.998 ug/l
 RT: 12.847 min Scan# 1852
 Delta R.T. 0.271 min
 Lab File: VN082192.D
 Acq: 17 May 2024 20:34



Tgt Ion:173 Resp: 508

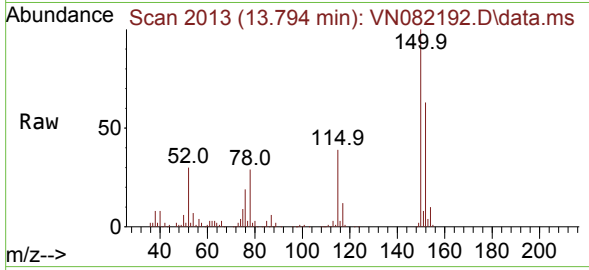
Ion	Ratio	Lower	Upper
173	100		
175	0.0	24.6	74.0#
254	0.0	0.0	0.0



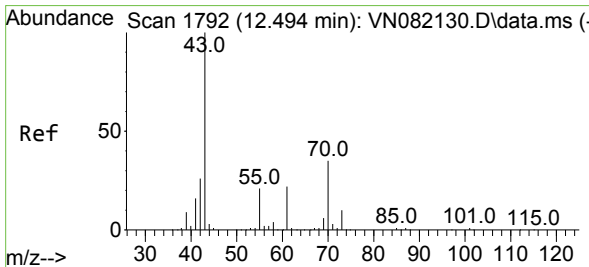
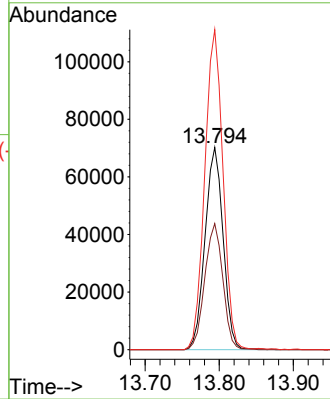
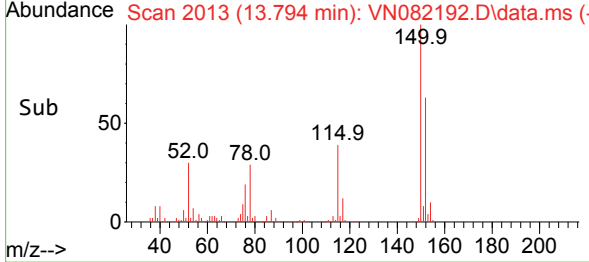


#72
 1,4-Dichlorobenzene-d4
 Concen: 50.000 ug/l
 RT: 13.794 min Scan# 20
 Delta R.T. -0.000 min
 Lab File: VN082192.D
 Acq: 17 May 2024 20:34

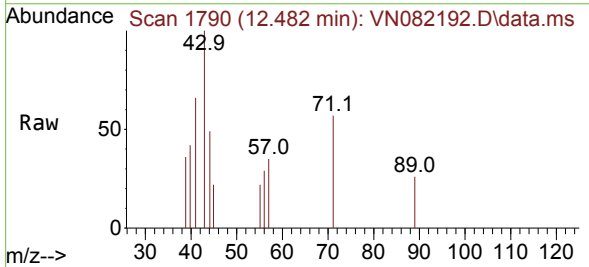
Instrument :
 MSVOA_N
 ClientSampleId :
 PB160967ZHE#10



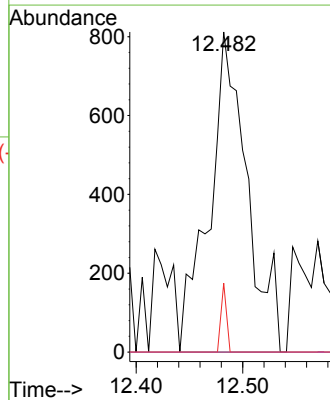
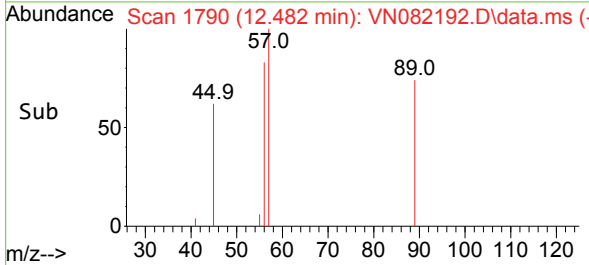
Tgt Ion:152 Resp: 119245
 Ion Ratio Lower Upper
 152 100
 115 62.1 30.4 91.3
 150 158.5 0.0 353.2

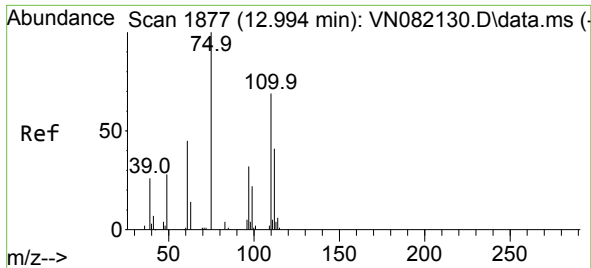


#74
 N-amy1 acetate
 Concen: 0.384 ug/l
 RT: 12.482 min Scan# 1790
 Delta R.T. -0.012 min
 Lab File: VN082192.D
 Acq: 17 May 2024 20:34



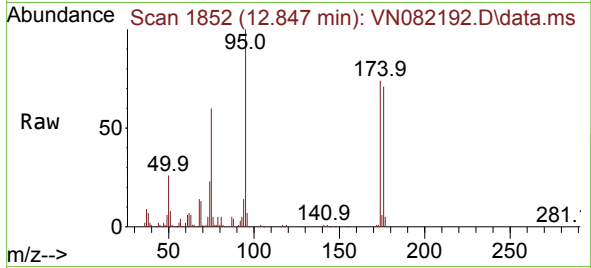
Tgt Ion: 43 Resp: 2001
 Ion Ratio Lower Upper
 43 100
 70 0.0 39.0 58.4#
 55 3.1 21.3 31.9#
 61 0.0 20.5 30.7#



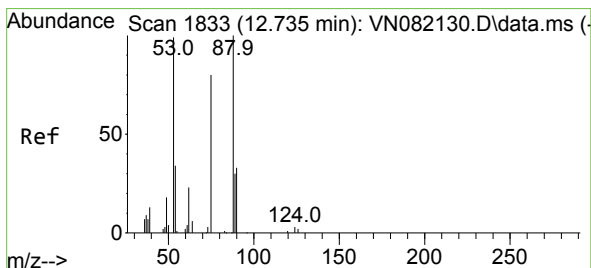
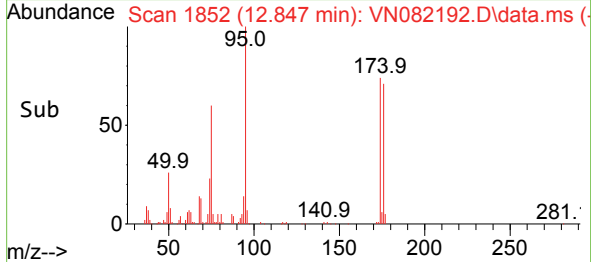
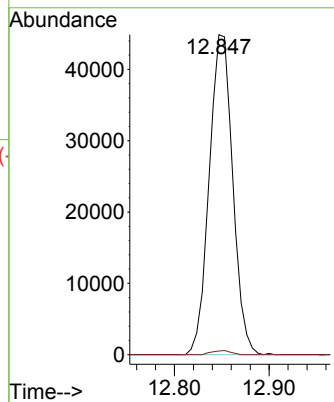


#76
 1,2,3-Trichloropropane
 Concen: 30.936 ug/l
 RT: 12.847 min Scan# 1852
 Delta R.T. -0.147 min
 Lab File: VN082192.D
 Acq: 17 May 2024 20:34

Instrument : MSVOA_N
 ClientSampleId : PB160967ZHE#10



Tgt Ion: 75 Resp: 77645
 Ion Ratio Lower Upper
 75 100
 77 1.0 90.5 271.3#



#81
 trans-1,4-Dichloro-2-butene
 Concen: 72.359 ug/l
 RT: 12.847 min Scan# 1852
 Delta R.T. 0.112 min
 Lab File: VN082192.D
 Acq: 17 May 2024 20:34

Tgt Ion: 75 Resp: 77645
 Ion Ratio Lower Upper
 75 100
 53 0.0 72.9 109.3#
 89 0.0 39.1 58.7#

