

Data Path : Z:\voasrv\HPCHEM1\MSVOA_N\Data\VN090624\
 Data File : VN083700.D
 Acq On : 06 Sep 2024 16:48
 Operator : JC\MD
 Sample : P3790-01 20X
 Misc : 5.0mL/MSVOA_N/WATER
 ALS Vial : 2 Sample Multiplier: 1

Instrument :
 MSVOA_N
 ClientSampleId :

Quant Time: Sep 06 23:49:07 2024
 Quant Method : Z:\voasrv\HPCHEM1\MSVOA_N\methods\624N090624W.M
 Quant Title : METHOD 624 VOLATILE ORGANIC ANALYSIS
 QLast Update : Fri Sep 06 23:42:47 2024
 Response via : Initial Calibration

Compound	R.T.	QIon	Response	Conc	Units	Dev(Min)

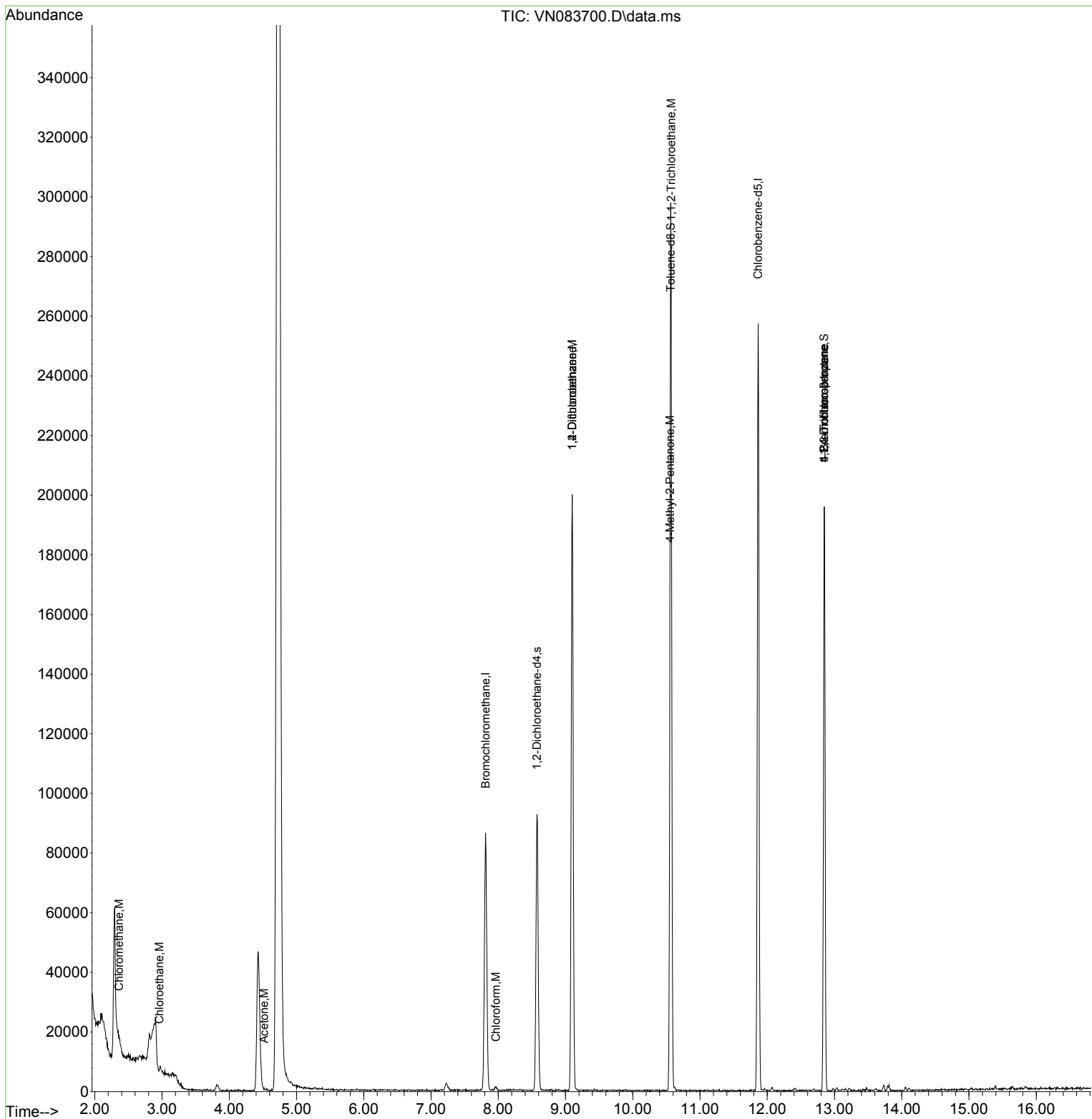
Internal Standards						
1) Bromochloromethane	7.812	128	28971	30.000	ug/l	0.00
28) 1,4-Difluorobenzene	9.100	114	166396	30.000	ug/l	0.00
57) Chlorobenzene-d5	11.865	117	143073	30.000	ug/l	0.00
System Monitoring Compounds						
27) 1,2-Dichloroethane-d4	8.576	65	81208	30.666	ug/l	0.00
Spiked Amount	30.000	Range 91 - 110	Recovery	=	102.233%	
60) 4-Bromofluorobenzene	12.847	95	67870	27.524	ug/l	0.00
Spiked Amount	30.000	Range 63 - 112	Recovery	=	91.733%	
63) Toluene-d8	10.565	98	198182	29.915	ug/l	0.00
Spiked Amount	30.000	Range 91 - 112	Recovery	=	99.733%	
Target Compounds						
						Qvalue
3) Chloromethane	2.359	50	712	0.353	ug/l #	43
6) Chloroethane	2.959	64	523	0.377	ug/l	91
15) Acetone	4.518	58	115	0.394	ug/l	100
25) Chloroform	7.965	83	1243	0.322	ug/l #	80
36) 1,2-Dichloroethane	9.100	62	7009	2.354	ug/l #	72
50) 1,1,2-Trichloroethane	10.570	97	6027	3.399	ug/l #	1
58) 4-Methyl-2-Pentanone	10.553	43	463	0.204	ug/l #	38
72) 1,2,3-Trichloropropane	12.847	75	38952	18.510	ug/l	1
77) t-1,4-Dichloro-2-butene	12.847	75	38952	43.793	ug/l #	12

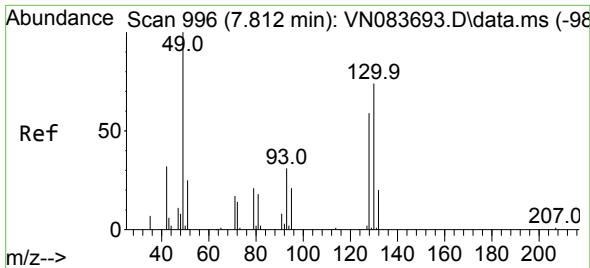
(#) = qualifier out of range (m) = manual integration (+) = signals summed

Data Path : Z:\voasrv\HPCHEM1\MSVOA_N\Data\VN090624\
 Data File : VN083700.D
 Acq On : 06 Sep 2024 16:48
 Operator : JC\MD
 Sample : P3790-01 20X
 Misc : 5.0mL/MSVOA_N/WATER
 ALS Vial : 2 Sample Multiplier: 1

Instrument :
 MSVOA_N
 ClientSampleId :

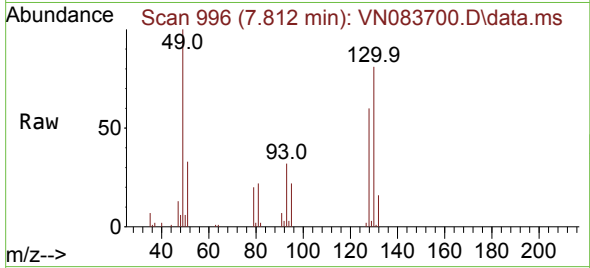
Quant Time: Sep 06 23:49:07 2024
 Quant Method : Z:\voasrv\HPCHEM1\MSVOA_N\methods\624N090624W.M
 Quant Title : METHOD 624 VOLATILE ORGANIC ANALYSIS
 QLast Update : Fri Sep 06 23:42:47 2024
 Response via : Initial Calibration



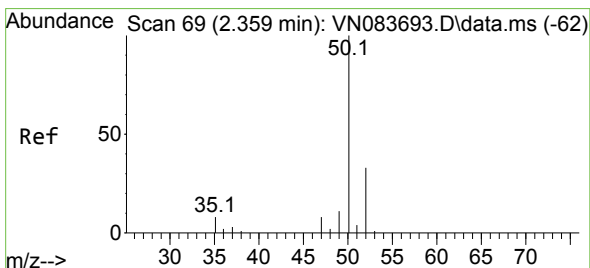
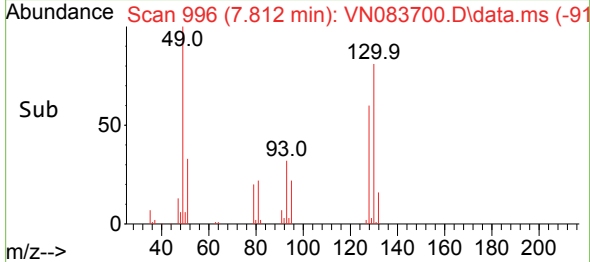
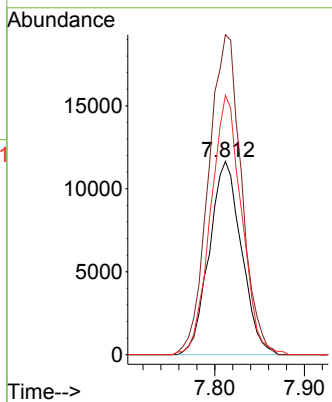


#1
 Bromochloromethane
 Concen: 30.000 ug/l
 RT: 7.812 min Scan# 996
 Delta R.T. -0.000 min
 Lab File: VN083700.D
 Acq: 06 Sep 2024 16:48

Instrument :
 MSVOA_N
 ClientSampleId :

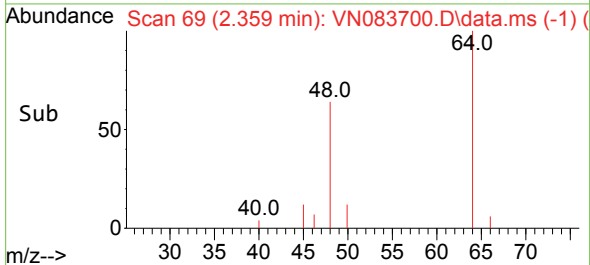
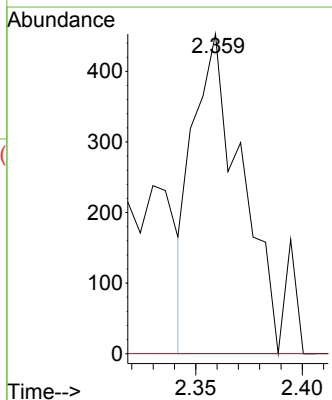
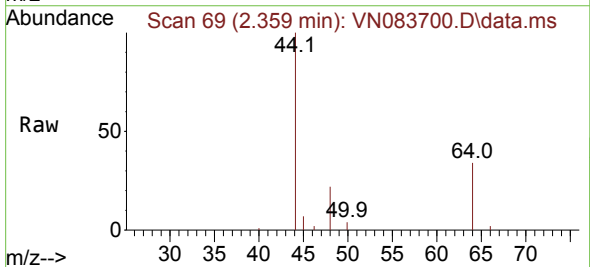


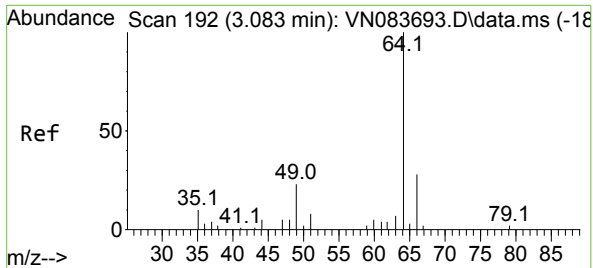
Tgt Ion:128 Resp: 28971
 Ion Ratio Lower Upper
 128 100
 49 169.0 0.0 403.7
 130 129.4 0.0 323.3



#3
 Chloromethane
 Concen: 0.353 ug/l
 RT: 2.359 min Scan# 69
 Delta R.T. -0.000 min
 Lab File: VN083700.D
 Acq: 06 Sep 2024 16:48

Tgt Ion: 50 Resp: 712
 Ion Ratio Lower Upper
 50 100
 52 0.0 25.4 38.0#

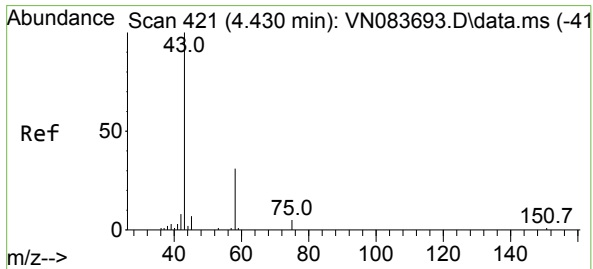
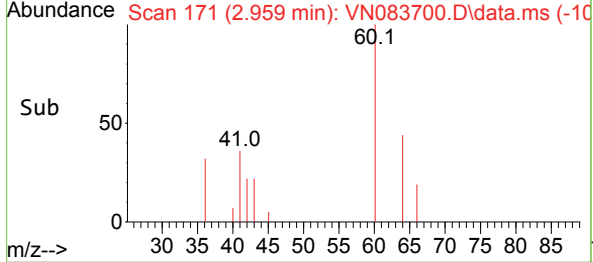
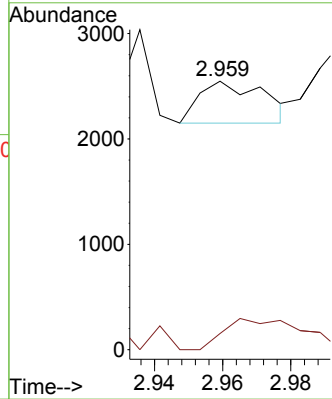
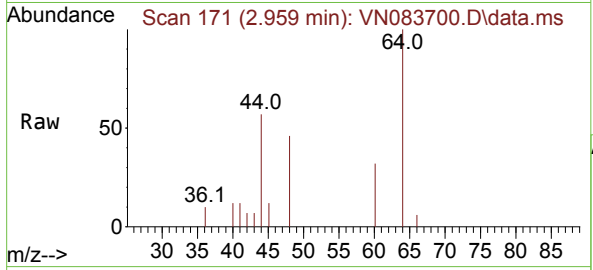




#6
 Chloroethane
 Concen: 0.377 ug/l
 RT: 2.959 min Scan# 11
 Delta R.T. -0.124 min
 Lab File: VN083700.D
 Acq: 06 Sep 2024 16:48

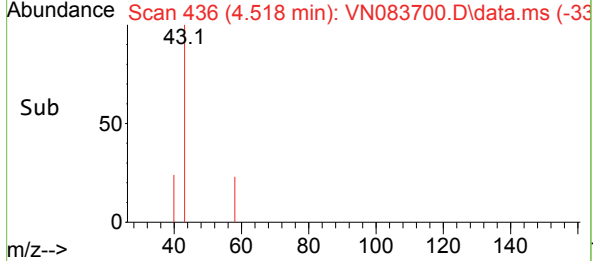
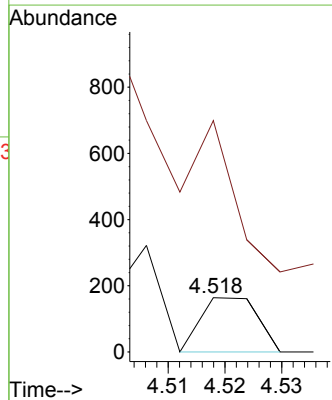
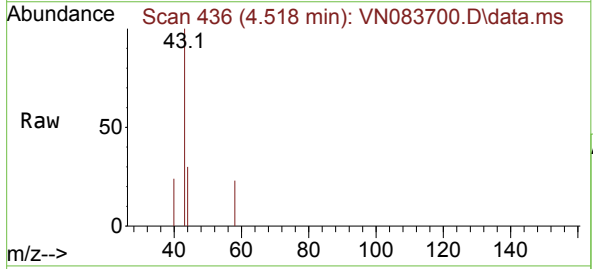
Instrument : MSVOA_N
 ClientSampleId :

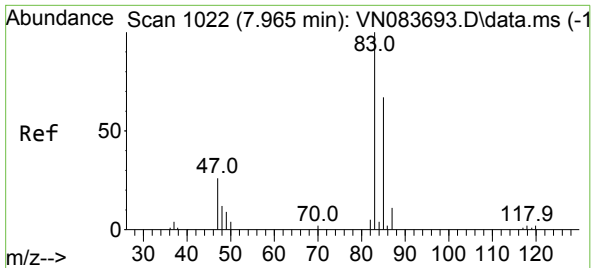
Tgt Ion: 64 Resp: 523
 Ion Ratio Lower Upper
 64 100
 66 38.4 26.7 40.1



#15
 Acetone
 Concen: 0.394 ug/l
 RT: 4.518 min Scan# 436
 Delta R.T. 0.088 min
 Lab File: VN083700.D
 Acq: 06 Sep 2024 16:48

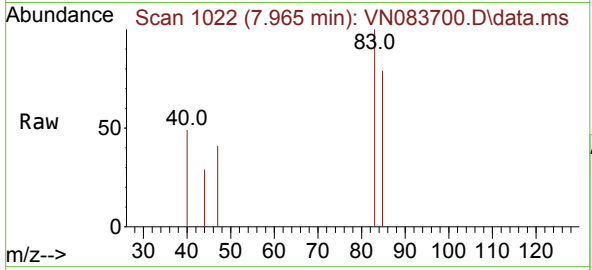
Tgt Ion: 58 Resp: 115
 Ion Ratio Lower Upper
 58 100
 43 278.7 223.1 334.7



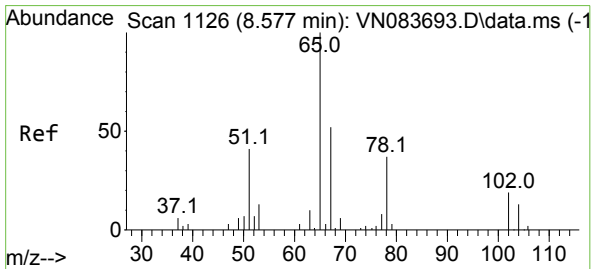
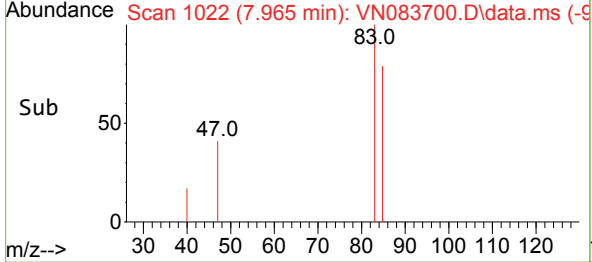
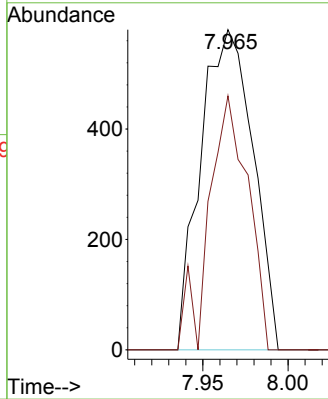


#25
 Chloroform
 Concen: 0.322 ug/l
 RT: 7.965 min Scan# 1022
 Delta R.T. -0.000 min
 Lab File: VN083700.D
 Acq: 06 Sep 2024 16:48

Instrument : MSVOA_N
 ClientSampleId :

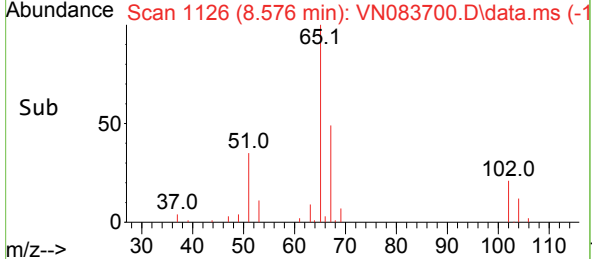
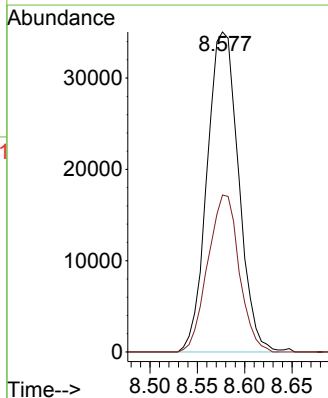
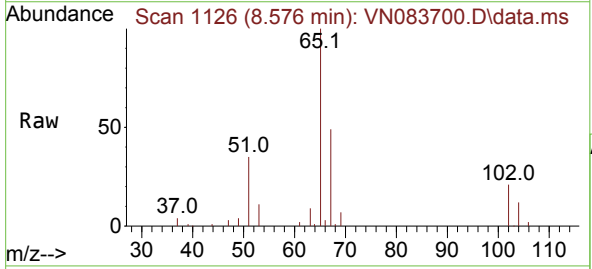


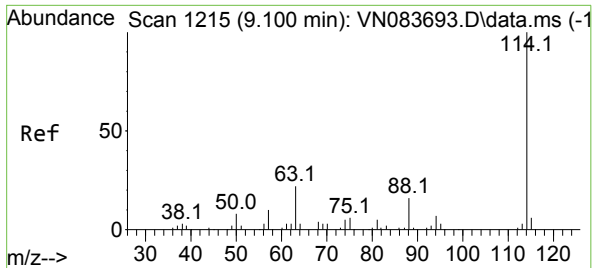
Tgt Ion: 83 Resp: 1243
 Ion Ratio Lower Upper
 83 100
 85 79.3 50.9 76.3#



#27
 1,2-Dichloroethane-d4
 Concen: 30.666 ug/l
 RT: 8.576 min Scan# 1126
 Delta R.T. -0.000 min
 Lab File: VN083700.D
 Acq: 06 Sep 2024 16:48

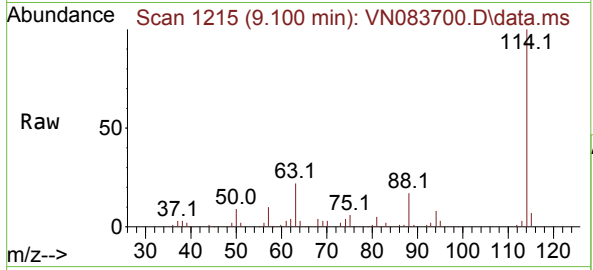
Tgt Ion: 65 Resp: 81208
 Ion Ratio Lower Upper
 65 100
 67 48.8 43.2 64.8





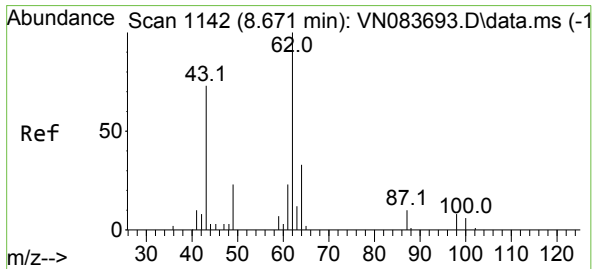
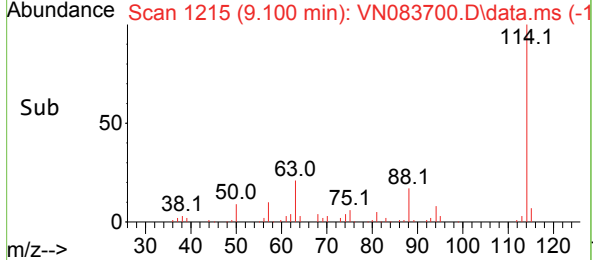
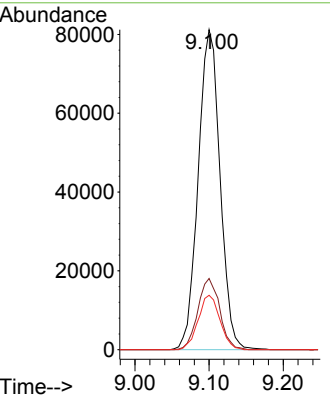
#28
 1,4-Difluorobenzene
 Concen: 30.000 ug/l
 RT: 9.100 min Scan# 1215
 Delta R.T. -0.000 min
 Lab File: VN083700.D
 Acq: 06 Sep 2024 16:48

Instrument : MSVOA_N
 ClientSampleId :



Tgt Ion:114 Resp: 166396

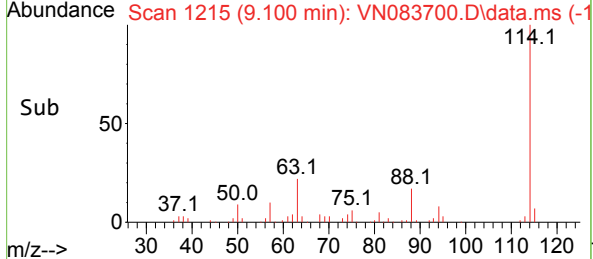
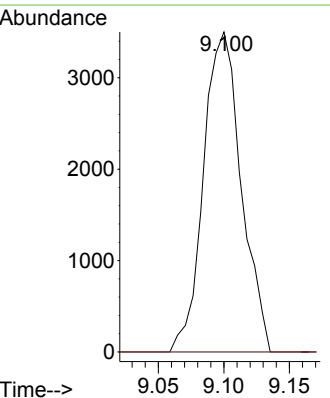
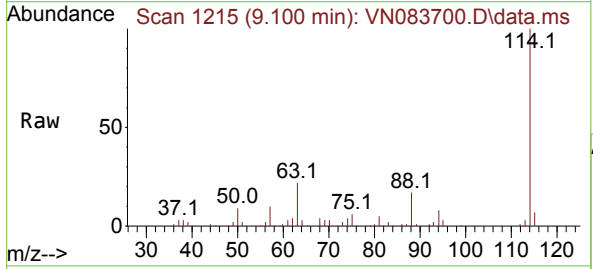
Ion	Ratio	Lower	Upper
114	100		
63	22.2	15.9	23.9
88	16.9	12.7	19.1

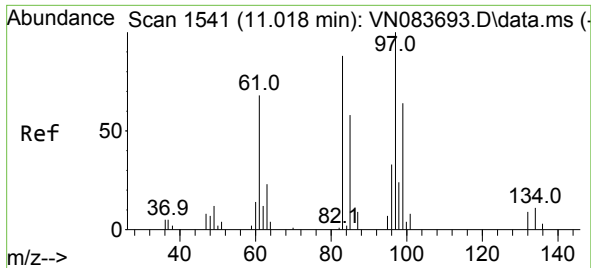


#36
 1,2-Dichloroethane
 Concen: 2.354 ug/l
 RT: 9.100 min Scan# 1215
 Delta R.T. 0.429 min
 Lab File: VN083700.D
 Acq: 06 Sep 2024 16:48

Tgt Ion: 62 Resp: 7009

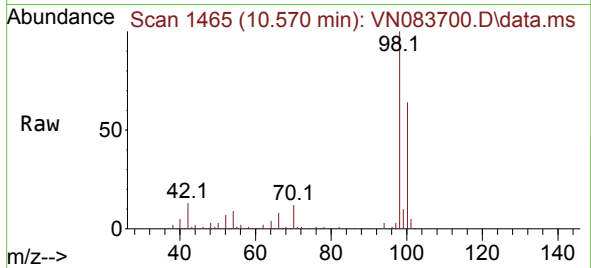
Ion	Ratio	Lower	Upper
62	100		
98	0.0	8.2	12.4#





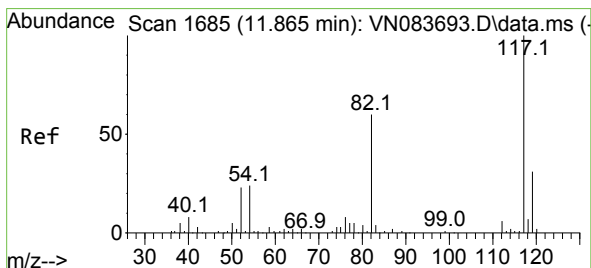
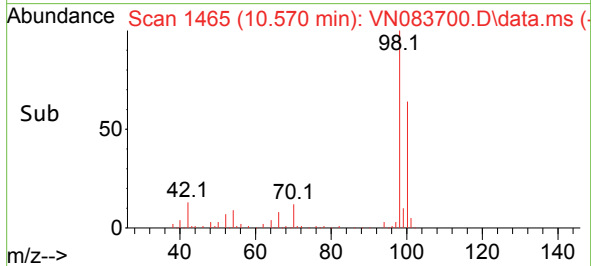
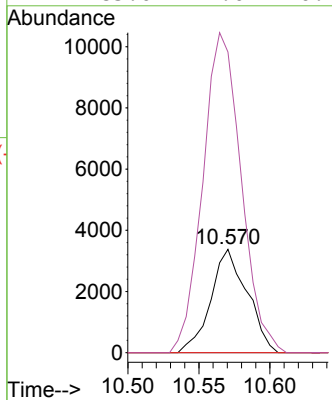
#50
 1,1,2-Trichloroethane
 Concen: 3.399 ug/l
 RT: 10.570 min Scan# 1465
 Delta R.T. -0.447 min
 Lab File: VN083700.D
 Acq: 06 Sep 2024 16:48

Instrument : MSVOA_N
 ClientSampleId :



Tgt Ion: 97 Resp: 6027

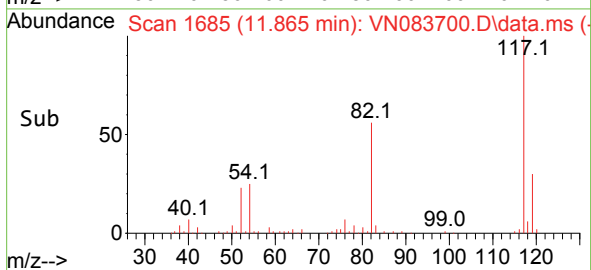
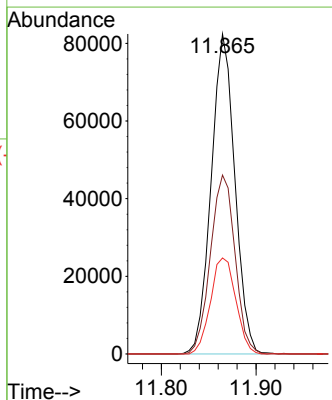
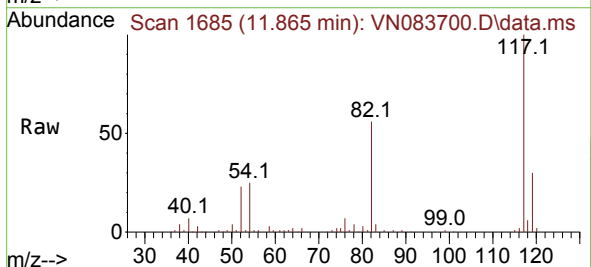
Ion	Ratio	Lower	Upper
97	100		
83	0.0	68.1	102.1#
85	0.0	41.8	62.6#
99	285.0	47.0	70.4#

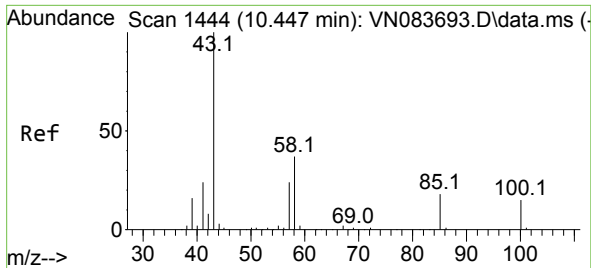


#57
 Chlorobenzene-d5
 Concen: 30.000 ug/l
 RT: 11.865 min Scan# 1685
 Delta R.T. -0.000 min
 Lab File: VN083700.D
 Acq: 06 Sep 2024 16:48

Tgt Ion: 117 Resp: 143073

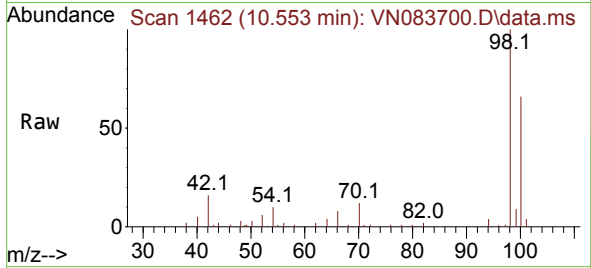
Ion	Ratio	Lower	Upper
117	100		
82	58.1	46.6	69.8
119	32.1	25.4	38.2





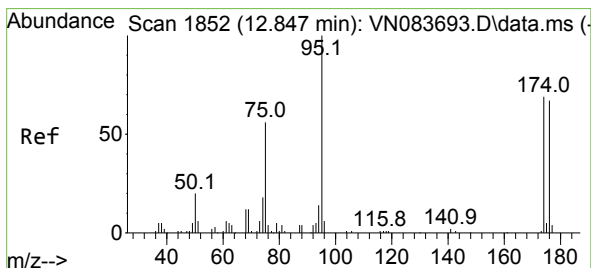
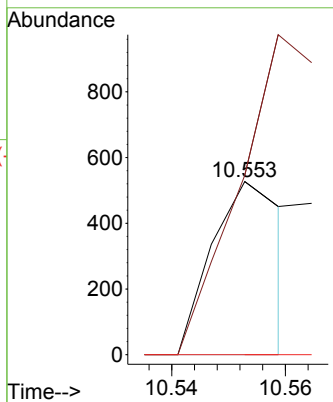
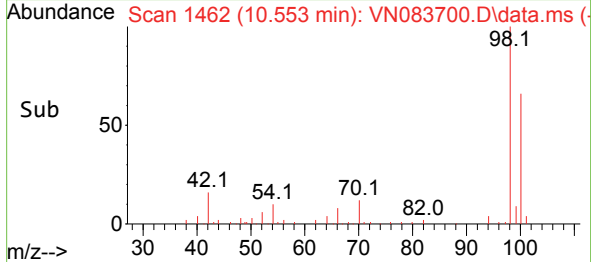
#58
 4-Methyl-2-Pentanone
 Concen: 0.204 ug/l
 RT: 10.553 min Scan# 1444
 Delta R.T. 0.106 min
 Lab File: VN083700.D
 Acq: 06 Sep 2024 16:48

Instrument : MSVOA_N
 ClientSampleId :



Tgt Ion: 43 Resp: 463

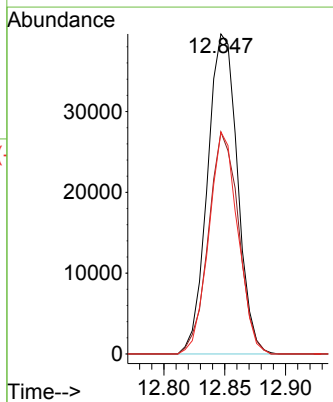
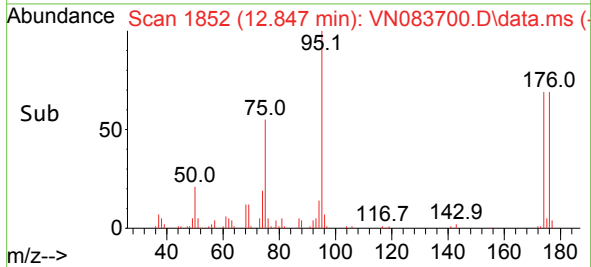
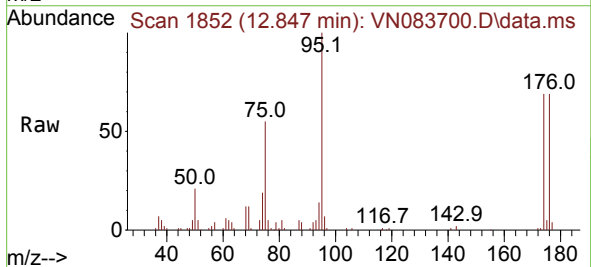
Ion	Ratio	Lower	Upper
43	100		
58	0.0	36.5	54.7#
85	0.0	19.5	29.3#

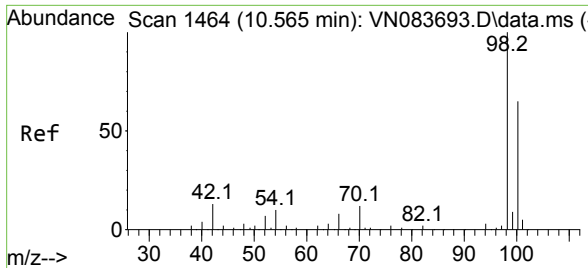


#60
 4-Bromofluorobenzene
 Concen: 27.524 ug/l
 RT: 12.847 min Scan# 1852
 Delta R.T. -0.000 min
 Lab File: VN083700.D
 Acq: 06 Sep 2024 16:48

Tgt Ion: 95 Resp: 67870

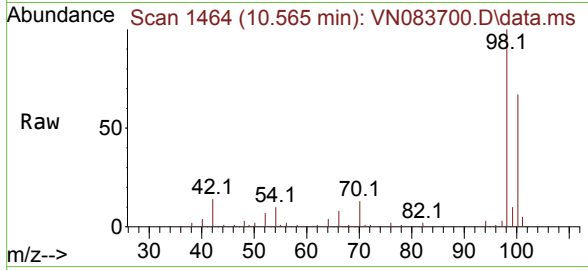
Ion	Ratio	Lower	Upper
95	100		
174	69.7	60.5	90.7
176	67.3	57.8	86.6



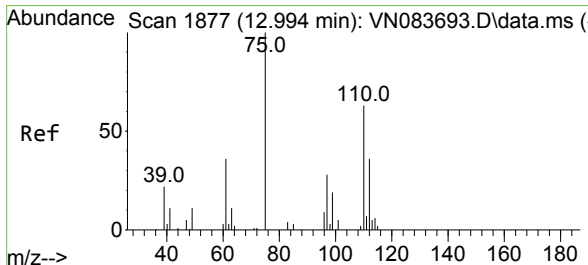
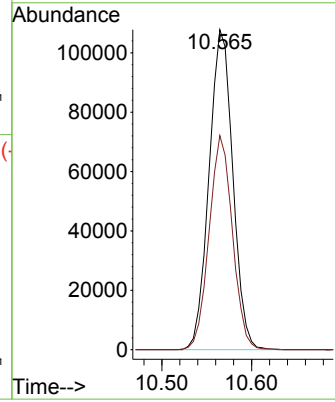
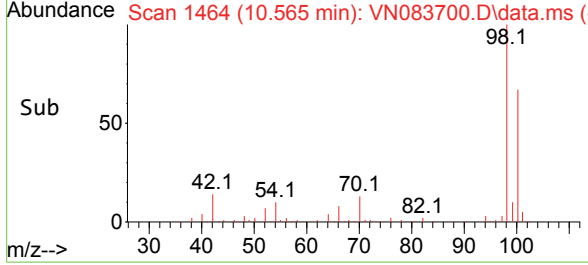


#63
 Toluene-d8
 Concen: 29.915 ug/l
 RT: 10.565 min Scan# 14
 Delta R.T. -0.000 min
 Lab File: VN083700.D
 Acq: 06 Sep 2024 16:48

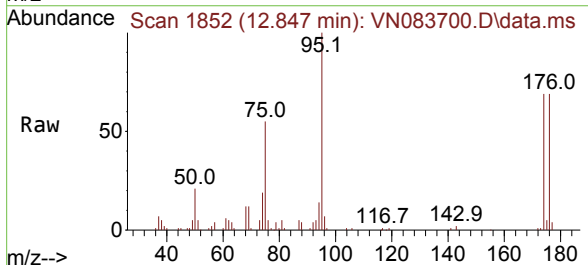
Instrument :
 MSVOA_N
 ClientSampleId :



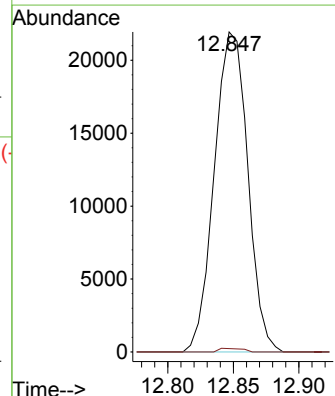
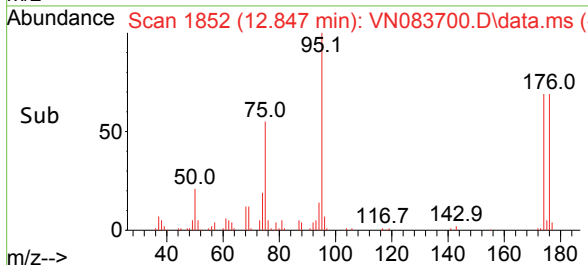
Tgt Ion: 98 Resp: 198182
 Ion Ratio Lower Upper
 98 100
 100 65.7 52.7 79.1

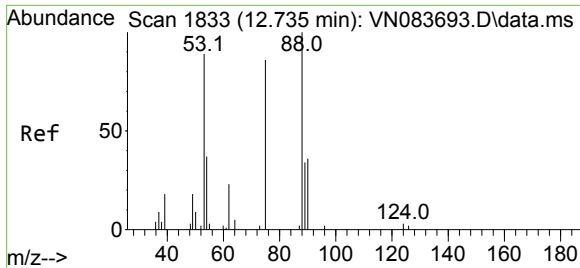


#72
 1,2,3-Trichloropropane
 Concen: 18.510 ug/l
 RT: 12.847 min Scan# 1852
 Delta R.T. -0.147 min
 Lab File: VN083700.D
 Acq: 06 Sep 2024 16:48



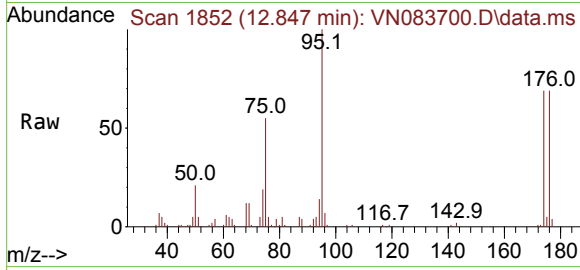
Tgt Ion: 75 Resp: 38952
 Ion Ratio Lower Upper
 75 100
 77 0.8 0.0 367.6





#77
 t-1,4-Dichloro-2-butene
 Concen: 43.793 ug/l
 RT: 12.847 min Scan# 11
 Delta R.T. 0.112 min
 Lab File: VN083700.D
 Acq: 06 Sep 2024 16:48

Instrument : MSVOA_N
 ClientSampleId :



Tgt Ion: 75 Resp: 38952

Ion	Ratio	Lower	Upper
75	100		
53	0.0	45.9	137.7#
89	0.0	25.9	77.7#

