

Data Path : Z:\voasrv\HPCHEM1\MSVOA\_N\Data\VN090821\  
 Data File : VN068433.D  
 Acq On : 8 Sep 2021 11:56  
 Operator : JC/MD  
 Sample : M3664-02  
 Misc : 5.00mL/MSVOA\_N/WATER  
 ALS Vial : 7 Sample Multiplier: 1

Instrument :  
 MSVOA\_N  
 ClientSampleId :  
 002-35TH-AVE(SEP)

Integration Parameters: RTEINT3.P  
 Integrator: RTE  
 Smoothing : OFF Filtering: 5  
 Sampling : 1 Min Area: 0 % of largest Peak  
 Start Thrs: 0.2 Max Peaks: 100  
 Stop Thrs : 0 Peak Location: TOP

If leading or trailing edge < 100 prefer < Baseline drop else tangent >  
 Peak separation: 5

Method : Z:\voasrv\HPCHEM1\MSVOA\_N\methods\624N090321W.M  
 Title : METHOD 624 VOLATILE ORGANIC ANALYSIS

Signal : TIC: VN068433.D\data.ms

peak #	R.T. min	first scan	max scan	last scan	PK TY	peak height	corr. area	corr. % max.	% of total
1	2.242	83	94	114	rVB3	12294	26105	1.89%	0.472%
2	2.749	269	283	300	rVB5	17397	45612	3.30%	0.825%
3	4.296	840	860	886	rBV2	28061	83950	6.07%	1.518%
4	7.662	2094	2115	2146	rBV4	212602	556668	40.23%	10.064%
5	8.440	2386	2405	2428	rBV3	206677	478371	34.58%	8.648%
6	8.971	2585	2603	2631	rBV	481907	1012141	73.15%	18.298%
7	10.446	3134	3153	3183	rBV	720610	1383569	100.00%	25.012%
8	11.747	3620	3638	3666	rBV	614813	1143655	82.66%	20.675%
9	11.953	3702	3715	3726	rBV5	7318	14087	1.02%	0.255%
10	12.734	3990	4006	4029	rVB	423825	759265	54.88%	13.726%
11	13.678	4348	4358	4364	rBV9	8268	13868	1.00%	0.251%
12	13.704	4364	4368	4385	rVB10	7253	14252	1.03%	0.258%

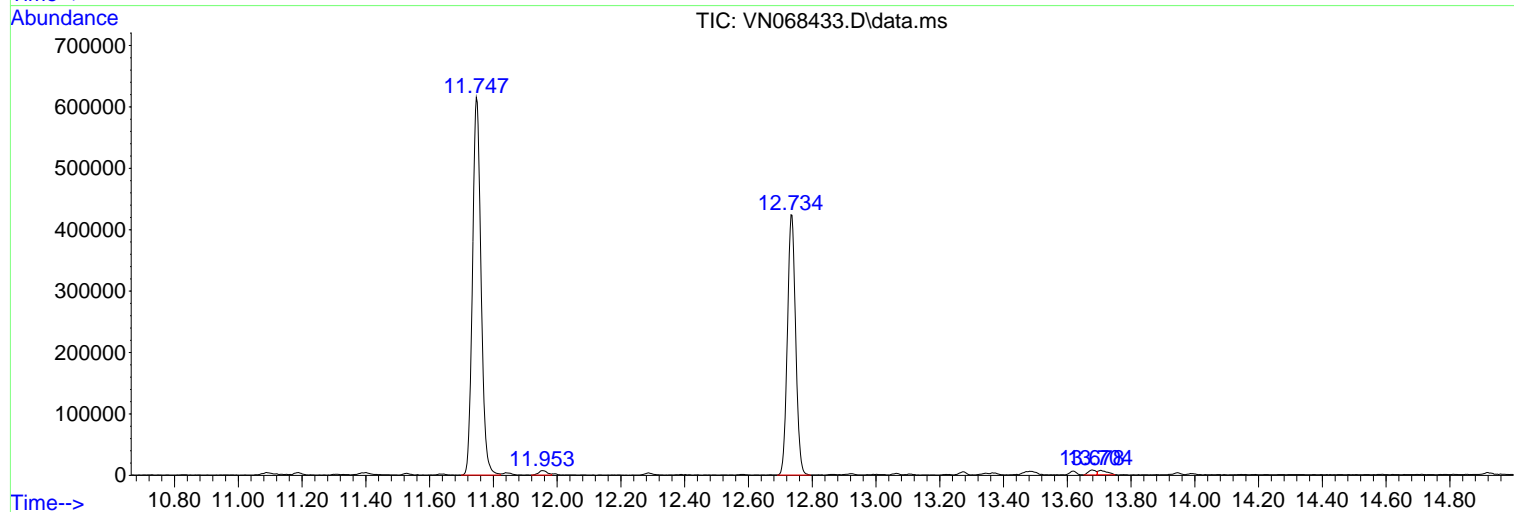
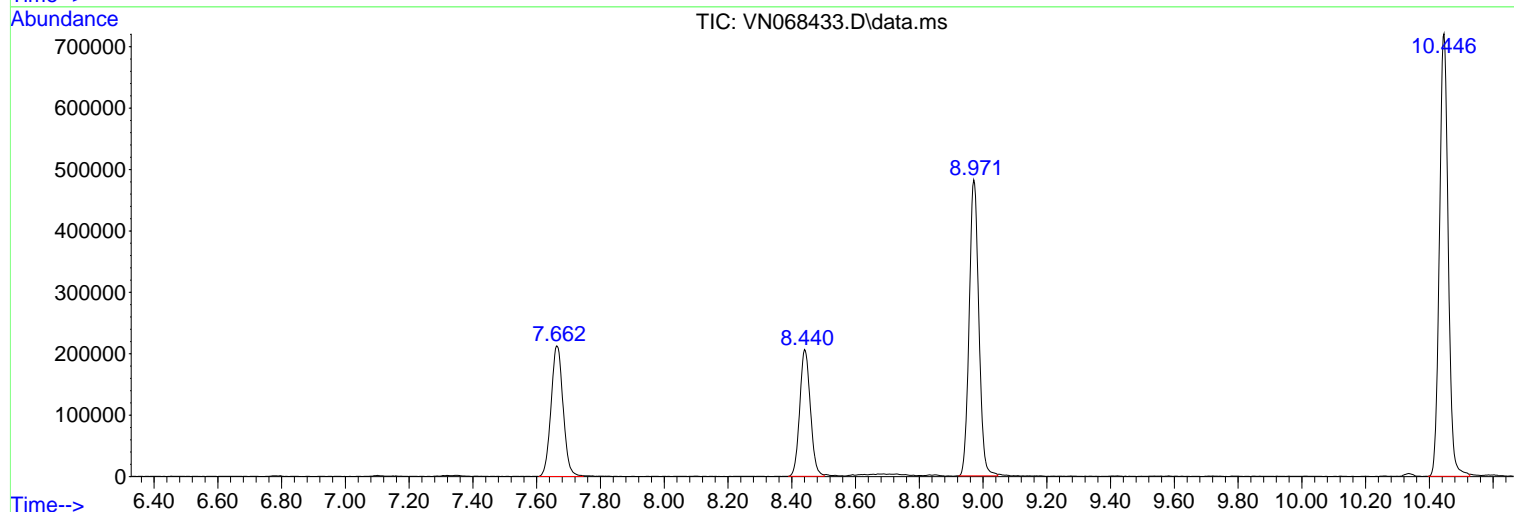
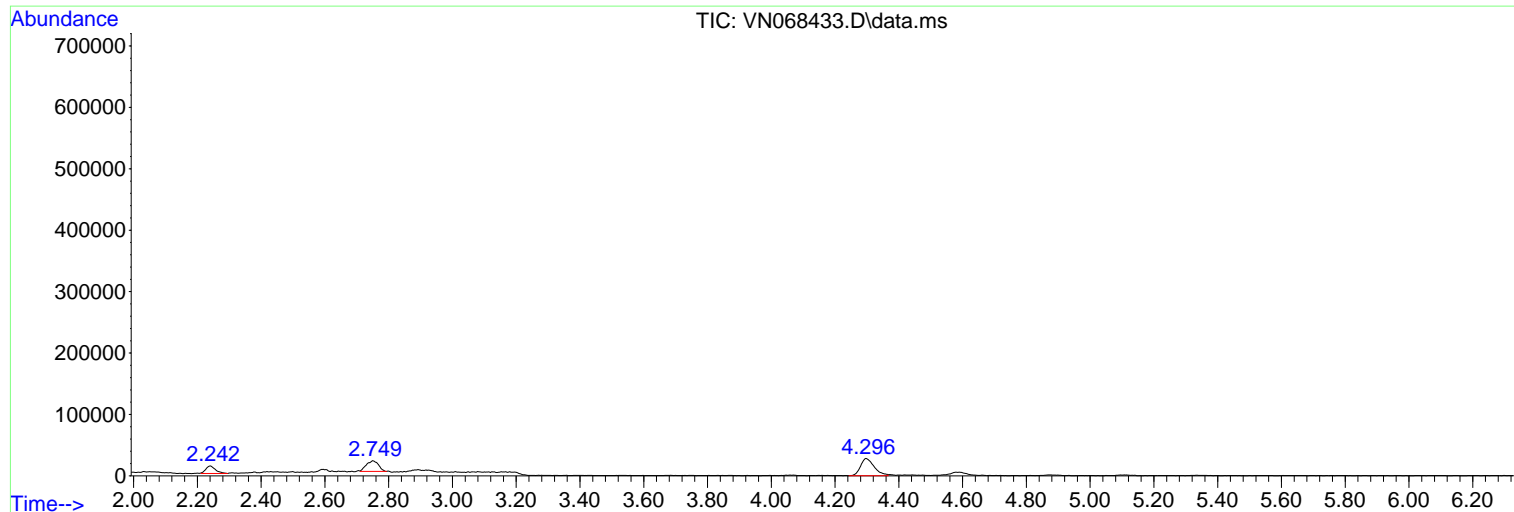
Sum of corrected areas: 5531543

Data Path : Z:\voasrv\HPCHEM1\MSVOA\_N\Data\VN090821\  
Data File : VN068433.D  
Acq On : 8 Sep 2021 11:56  
Operator : JC/MD  
Sample : M3664-02  
Misc : 5.00mL/MSVOA\_N/WATER  
ALS Vial : 7 Sample Multiplier: 1

Instrument :  
MSVOA\_N  
ClientSampleId :  
002-35TH-AVE(SEP)

Quant Method : Z:\voasrv\HPCHEM1\MSVOA\_N\methods\624N090321W.M  
Quant Title : METHOD 624 VOLATILE ORGANIC ANALYSIS

TIC Library : C:\Database\NIST20.L  
TIC Integration Parameters: LSCINT.P



Library Search Compound Report

Data Path : Z:\voasrv\HPCHEM1\MSVOA\_N\Data\VN090821\  
Data File : VN068433.D  
Acq On : 8 Sep 2021 11:56  
Operator : JC/MD  
Sample : M3664-02  
Misc : 5.00mL/MSVOA\_N/WATER  
ALS Vial : 7 Sample Multiplier: 1

Instrument :  
MSVOA\_N  
ClientSampleId :  
002-35TH-AVE(SEP)

Quant Method : Z:\voasrv\HPCHEM1\MSVOA\_N\methods\624N090321W.M  
Quant Title : METHOD 624 VOLATILE ORGANIC ANALYSIS

TIC Library : C:\Database\NIST20.L  
TIC Integration Parameters: LSCINT.P

No Library Search Compounds Detected

\*\*\*\*\*

Data Path : Z:\voasrv\HPCHEM1\MSVOA\_N\Data\VN090821\  
Data File : VN068433.D  
Acq On : 8 Sep 2021 11:56  
Operator : JC/MD  
Sample : M3664-02  
Misc : 5.00mL/MSVOA\_N/WATER  
ALS Vial : 7 Sample Multiplier: 1

Instrument :  
MSVOA\_N  
ClientSampleId :  
002-35TH-AVE(SEP)

Quant Method : Z:\voasrv\HPCHEM1\MSVOA\_N\methods\624N090321W.M  
Quant Title : METHOD 624 VOLATILE ORGANIC ANALYSIS

TIC Library : C:\Database\NIST20.L  
TIC Integration Parameters: LSCINT.P

TIC Top Hit name	RT	EstConc	Units	Response	--Internal Standard--		
					#	RT	Resp Conc

---