

Data Path : Z:\voasrv\HPCHEM1\MSVOA\_N\Data\VN091522\  
 Data File : VN074465.D  
 Acq On : 15 Sep 2022 16:45  
 Operator : JC\MD  
 Sample : N4471-05DL 50X  
 Misc : 5.0mL/MSVOA\_N/WATER  
 ALS Vial : 15 Sample Multiplier: 1

Instrument :  
 MSVOA\_N  
 ClientSampleId :  
 MW-11A-11-16-083022-FDDL

Quant Time: Sep 16 01:45:58 2022  
 Quant Method : Z:\voasrv\HPCHEM1\MSVOA\_N\methods\82N091522W.M  
 Quant Title : SW846 8260  
 QLast Update : Thu Sep 15 19:20:33 2022  
 Response via : Initial Calibration

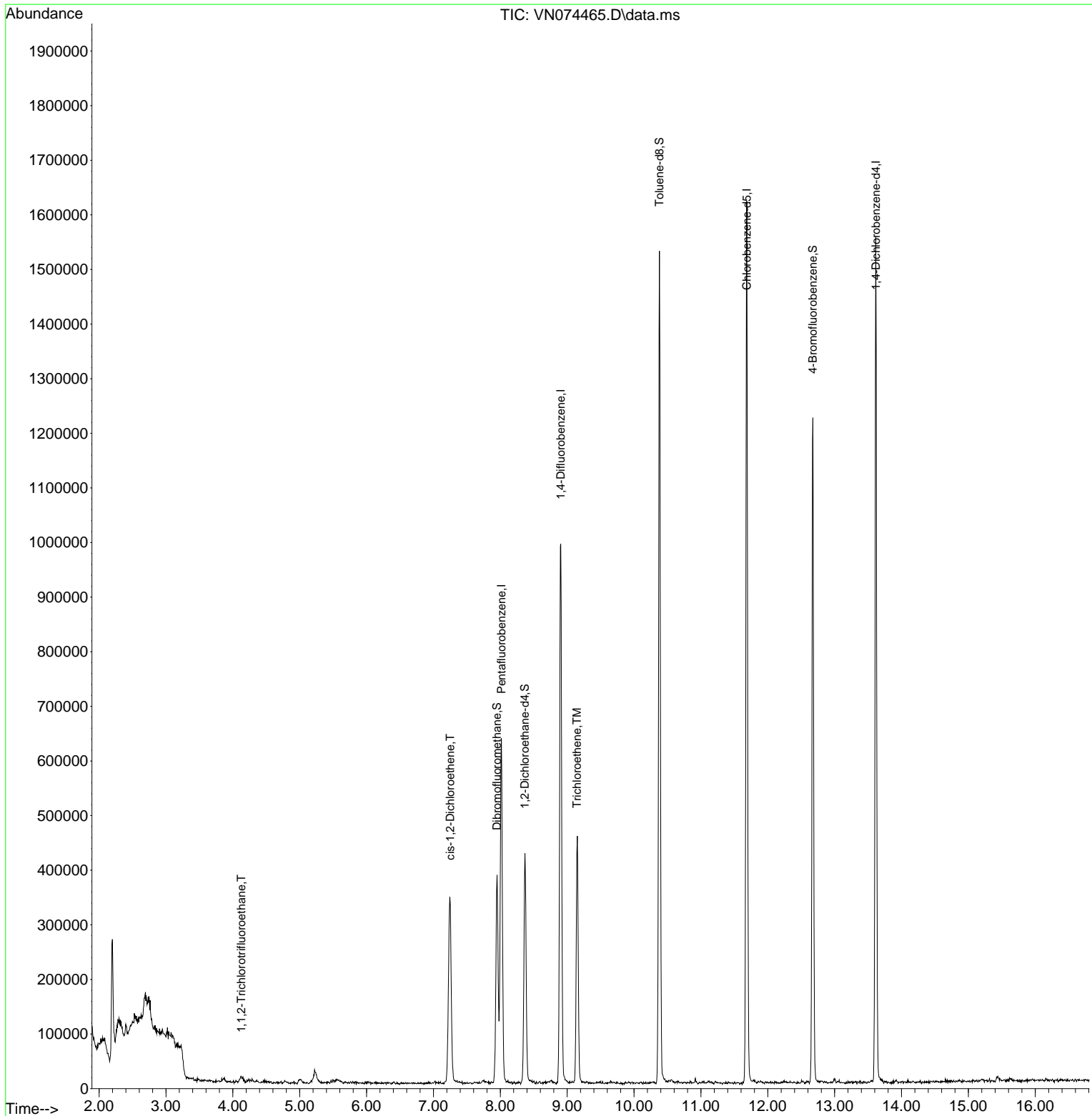
Compound	R.T.	QIon	Response	Conc	Units	Dev(Min)
-----						
Internal Standards						
1) Pentafluorobenzene	8.016	168	450413	50.000	ug/l	0.00
34) 1,4-Difluorobenzene	8.904	114	854615	50.000	ug/l	0.00
63) Chlorobenzene-d5	11.686	117	839816	50.000	ug/l	0.00
72) 1,4-Dichlorobenzene-d4	13.615	152	364086	50.000	ug/l	0.00
System Monitoring Compounds						
33) 1,2-Dichloroethane-d4	8.369	65	324857	42.508	ug/l	0.00
Spiked Amount	50.000	Range	74 - 125	Recovery	=	85.020%
35) Dibromofluoromethane	7.951	113	262635	46.263	ug/l	0.00
Spiked Amount	50.000	Range	75 - 124	Recovery	=	92.520%
50) Toluene-d8	10.380	98	994445	45.294	ug/l	0.00
Spiked Amount	50.000	Range	86 - 113	Recovery	=	90.580%
62) 4-Bromofluorobenzene	12.674	95	398492	52.994	ug/l	0.00
Spiked Amount	50.000	Range	83 - 123	Recovery	=	105.980%
Target Compounds						
					Qvalue	
9) 1,1,2-Trichlorotrifluo...	4.128	101	5935	0.985	ug/l #	93
27) cis-1,2-Dichloroethene	7.251	96	180634	21.659	ug/l	97
44) Trichloroethene	9.145	130	150546	22.390	ug/l	91
-----						

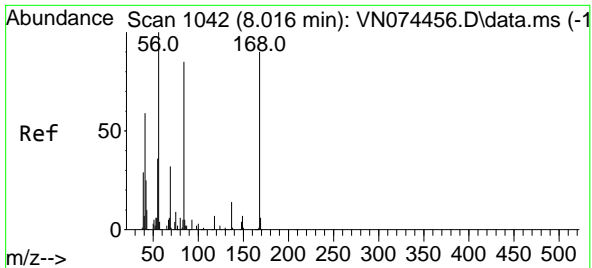
(#) = qualifier out of range (m) = manual integration (+) = signals summed

Data Path : Z:\voasrv\HPCHEM1\MSVOA\_N\Data\VN091522\  
 Data File : VN074465.D  
 Acq On : 15 Sep 2022 16:45  
 Operator : JC\MD  
 Sample : N4471-05DL 50X  
 Misc : 5.0mL/MSVOA\_N/WATER  
 ALS Vial : 15 Sample Multiplier: 1

Instrument :  
 MSVOA\_N  
 ClientSampleId :  
 MW-11A-11-16-083022-FDDL

Quant Time: Sep 16 01:45:58 2022  
 Quant Method : Z:\voasrv\HPCHEM1\MSVOA\_N\methods\82N091522W.M  
 Quant Title : SW846 8260  
 QLast Update : Thu Sep 15 19:20:33 2022  
 Response via : Initial Calibration

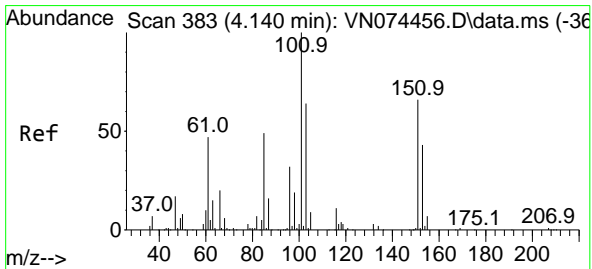
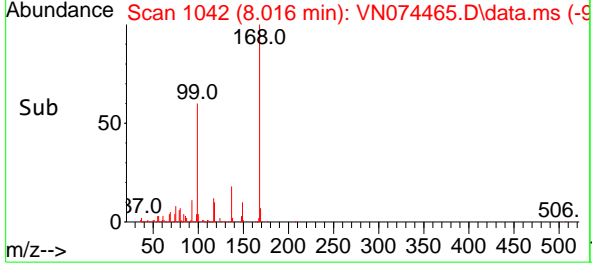
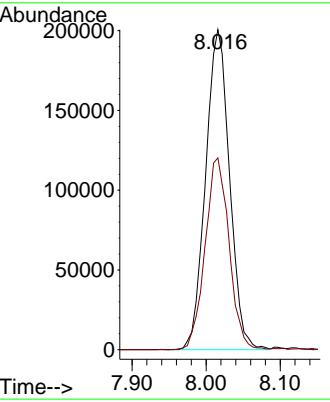
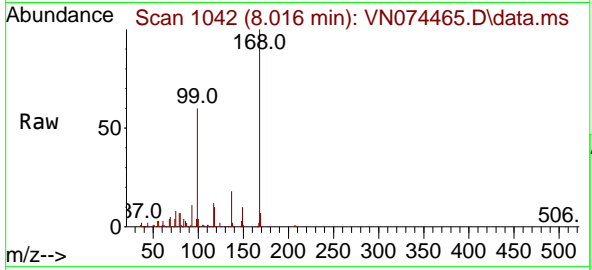




#1  
 Pentafluorobenzene  
 Concen: 50.000 ug/l  
 RT: 8.016 min Scan# 1042  
 Delta R.T. -0.000 min  
 Lab File: VN074465.D  
 Acq: 15 Sep 2022 16:45

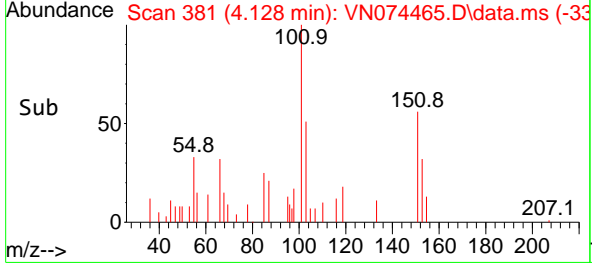
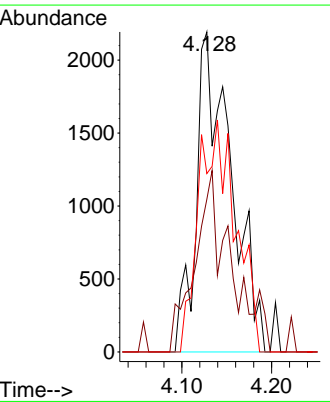
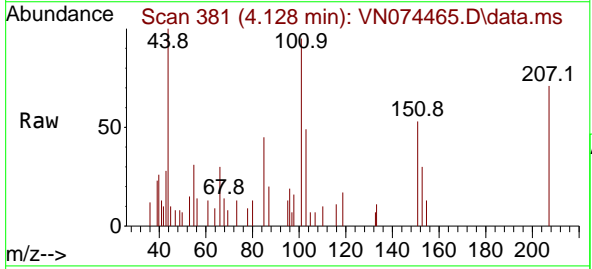
Instrument : MSVOA\_N  
 ClientSampleId : MW-11A-11-16-083022-FDDL

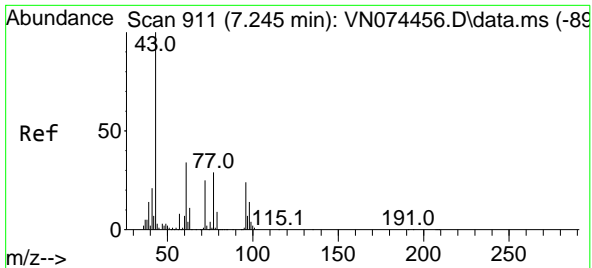
Tgt Ion:168 Resp: 450413  
 Ion Ratio Lower Upper  
 168 100  
 99 60.0 42.3 63.5



#9  
 1,1,2-Trichlorotrifluoroethane  
 Concen: 0.985 ug/l  
 RT: 4.128 min Scan# 381  
 Delta R.T. -0.012 min  
 Lab File: VN074465.D  
 Acq: 15 Sep 2022 16:45

Tgt Ion:101 Resp: 5935  
 Ion Ratio Lower Upper  
 101 100  
 85 54.6 34.7 52.1#  
 151 77.1 63.0 94.4



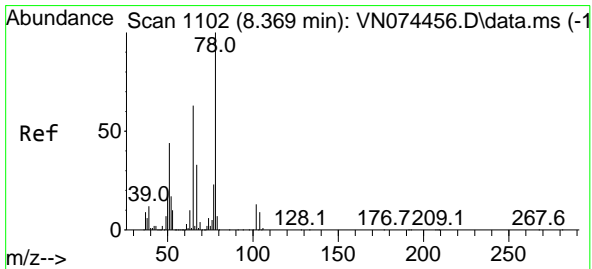
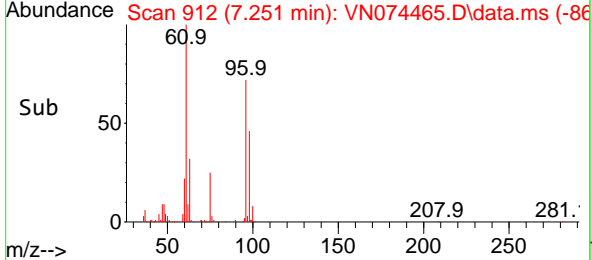
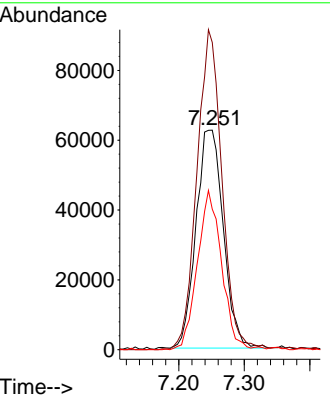
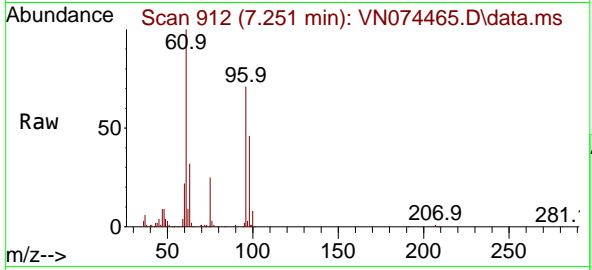


#27  
 cis-1,2-Dichloroethene  
 Concen: 21.659 ug/l  
 RT: 7.251 min Scan# 911  
 Delta R.T. 0.006 min  
 Lab File: VN074465.D  
 Acq: 15 Sep 2022 16:45

Instrument : MSVOA\_N  
 ClientSampleId : MW-11A-11-16-083022-FDDL

Tgt Ion: 96 Resp: 180634

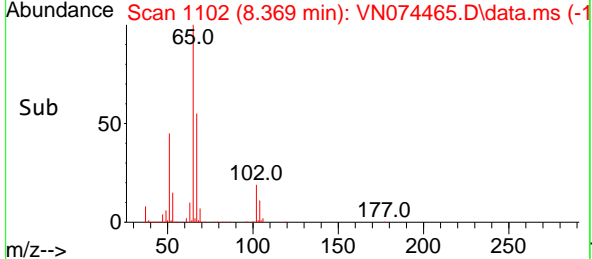
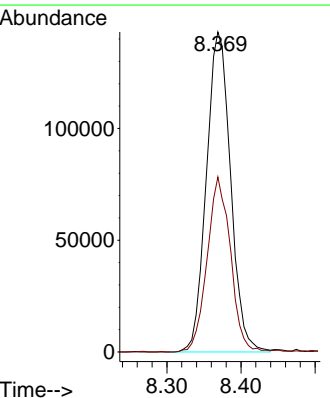
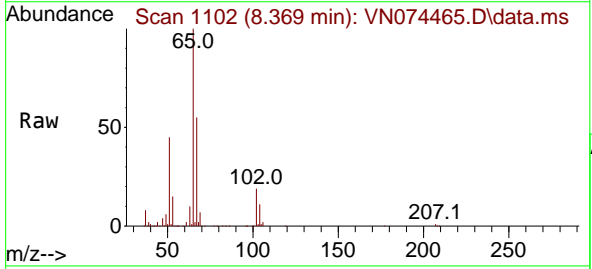
Ion	Ratio	Lower	Upper
96	100		
61	134.7	0.0	280.6
98	64.3	0.0	128.4

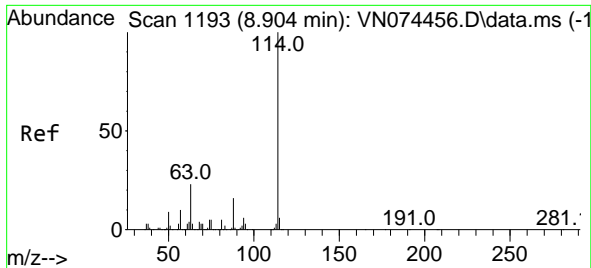


#33  
 1,2-Dichloroethane-d4  
 Concen: 42.508 ug/l  
 RT: 8.369 min Scan# 1102  
 Delta R.T. -0.000 min  
 Lab File: VN074465.D  
 Acq: 15 Sep 2022 16:45

Tgt Ion: 65 Resp: 324857

Ion	Ratio	Lower	Upper
65	100		
67	53.0	0.0	104.8

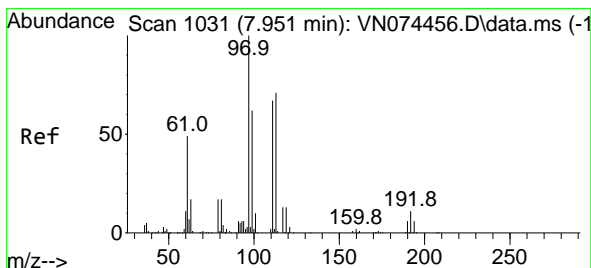
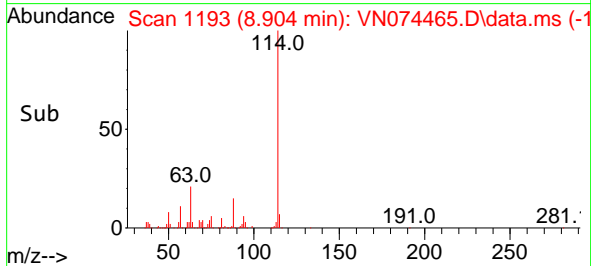
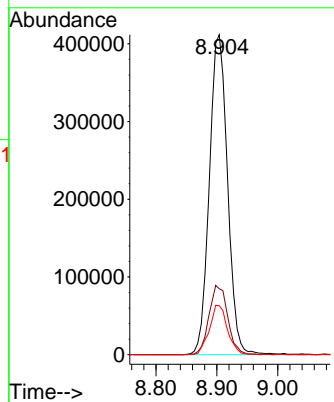
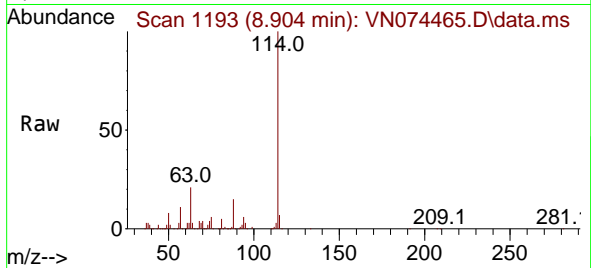




#34  
 1,4-Difluorobenzene  
 Concen: 50.000 ug/l  
 RT: 8.904 min Scan# 1193  
 Delta R.T. 0.000 min  
 Lab File: VN074465.D  
 Acq: 15 Sep 2022 16:45

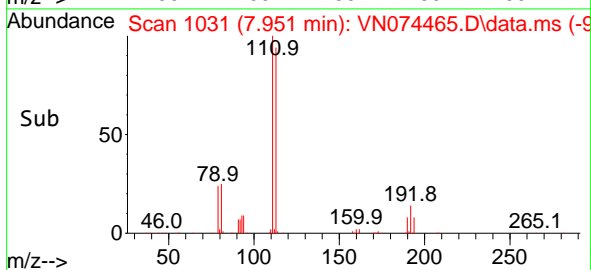
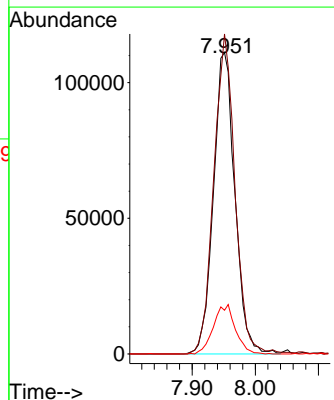
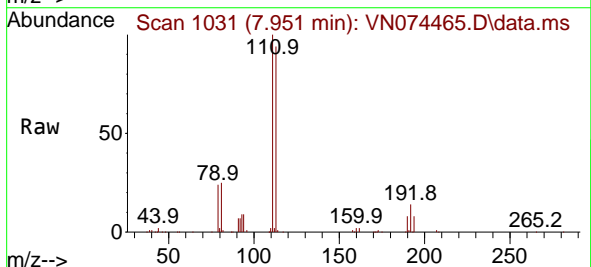
Instrument : MSVOA\_N  
 ClientSampleId : MW-11A-11-16-083022-FDDL

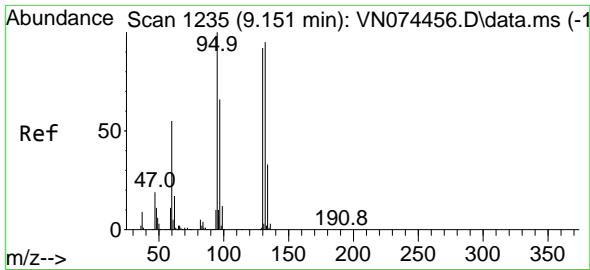
Tgt Ion	Resp	Lower	Upper
114	100		
63	20.6	0.0	40.0
88	15.3	0.0	32.6



#35  
 Dibromofluoromethane  
 Concen: 46.263 ug/l  
 RT: 7.951 min Scan# 1031  
 Delta R.T. 0.000 min  
 Lab File: VN074465.D  
 Acq: 15 Sep 2022 16:45

Tgt Ion	Resp	Lower	Upper
113	100		
111	104.7	81.4	122.0
192	16.7	17.0	25.6

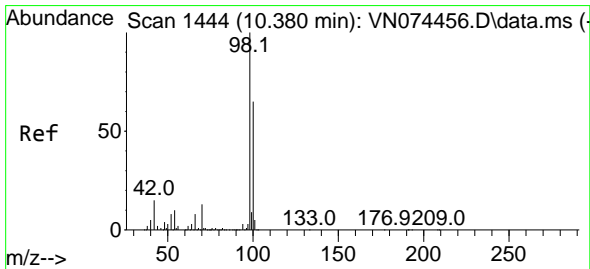
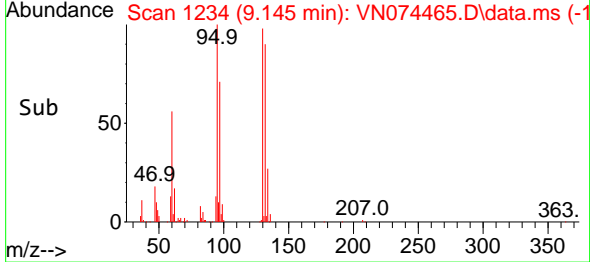
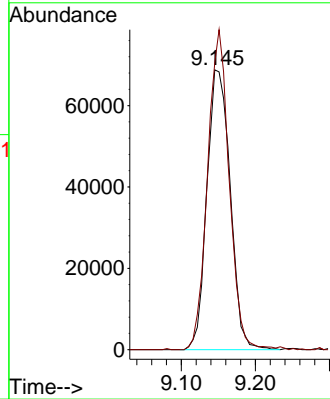
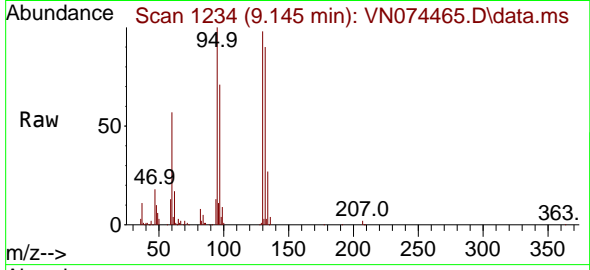




#44  
 Trichloroethene  
 Concen: 22.390 ug/l  
 RT: 9.145 min Scan# 111  
 Delta R.T. -0.006 min  
 Lab File: VN074465.D  
 Acq: 15 Sep 2022 16:45

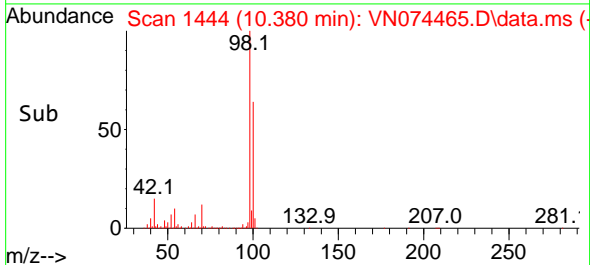
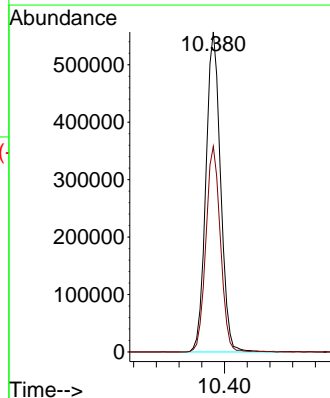
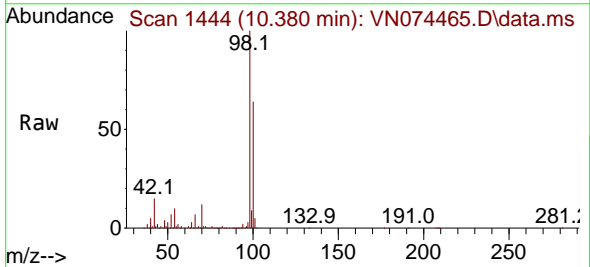
Instrument : MSVOA\_N  
 ClientSampleId : MW-11A-11-16-083022-FDDL

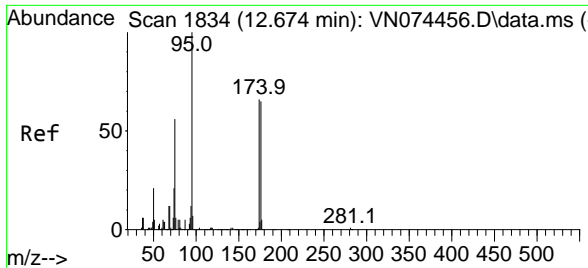
Tgt Ion:130 Resp: 150546  
 Ion Ratio Lower Upper  
 130 100  
 95 102.5 0.0 186.8



#50  
 Toluene-d8  
 Concen: 45.294 ug/l  
 RT: 10.380 min Scan# 1444  
 Delta R.T. 0.000 min  
 Lab File: VN074465.D  
 Acq: 15 Sep 2022 16:45

Tgt Ion: 98 Resp: 994445  
 Ion Ratio Lower Upper  
 98 100  
 100 63.4 52.6 78.8

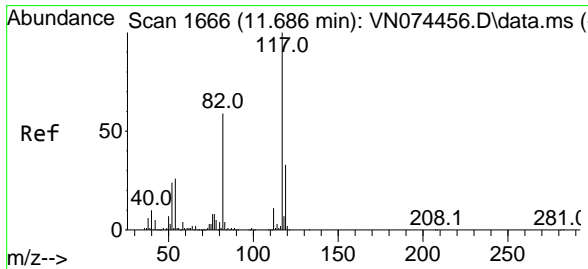
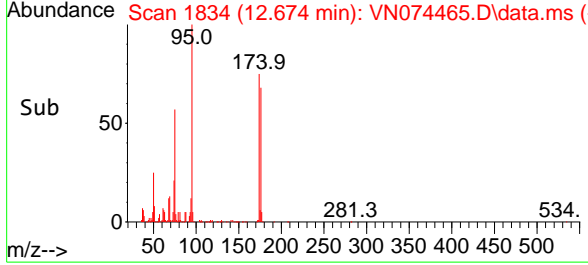
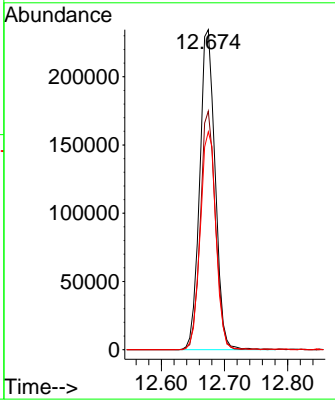
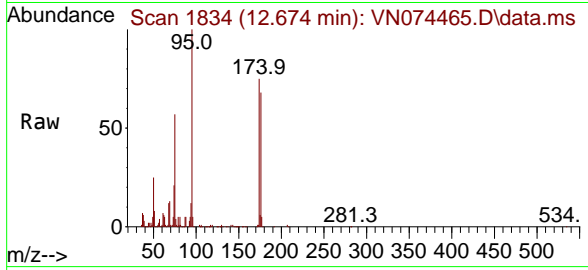




#62  
 4-Bromofluorobenzene  
 Concen: 52.994 ug/l  
 RT: 12.674 min Scan# 1834  
 Delta R.T. 0.000 min  
 Lab File: VN074465.D  
 Acq: 15 Sep 2022 16:45

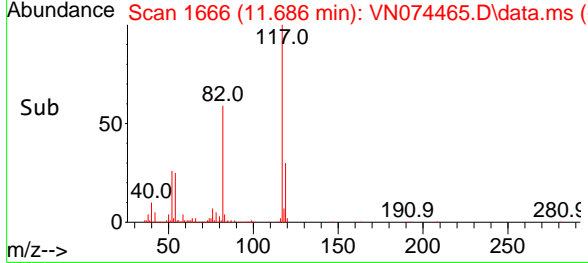
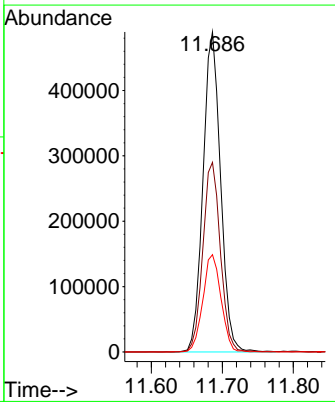
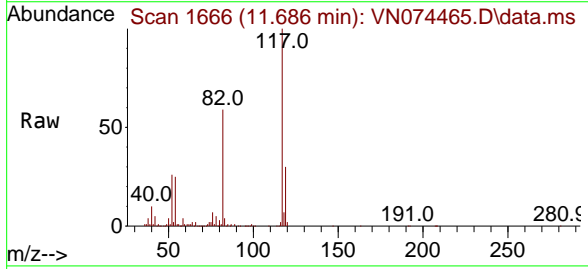
Instrument : MSVOA\_N  
 ClientSampleId : MW-11A-11-16-083022-FDDL

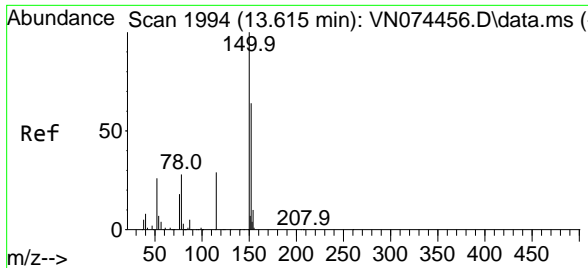
Tgt Ion	Resp	Lower	Upper
95	398492		
174	72.9	0.0	167.6
176	69.2	0.0	163.4



#63  
 Chlorobenzene-d5  
 Concen: 50.000 ug/l  
 RT: 11.686 min Scan# 1666  
 Delta R.T. 0.000 min  
 Lab File: VN074465.D  
 Acq: 15 Sep 2022 16:45

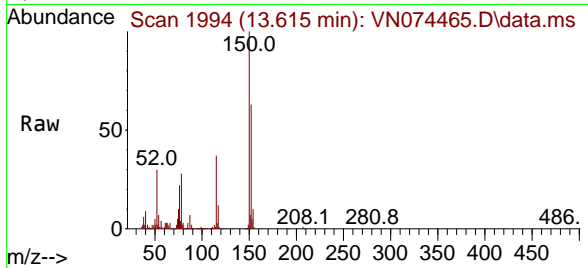
Tgt Ion	Resp	Lower	Upper
117	839816		
82	59.2	44.2	66.2
119	30.4	25.4	38.0





#72  
 1,4-Dichlorobenzene-d4  
 Concen: 50.000 ug/l  
 RT: 13.615 min Scan# 1994  
 Delta R.T. 0.000 min  
 Lab File: VN074465.D  
 Acq: 15 Sep 2022 16:45

Instrument : MSVOA\_N  
 ClientSampleId : MW-11A-11-16-083022-FDDL



Tgt Ion:152 Resp: 364086

Ion	Ratio	Lower	Upper
152	100		
115	59.9	28.9	86.7
150	158.5	0.0	356.2

