

Data Path : Z:\voasrv\HPCHEM1\MSVOA_N\Data\VN091522\
 Data File : VN074490.D
 Acq On : 16 Sep 2022 03:41
 Operator : JC\MD
 Sample : N4630-20
 Misc : 5.0mL/MSVOA_N/WATER
 ALS Vial : 42 Sample Multiplier: 1

Instrument :
 MSVOA_N
 ClientSampleId :
 WC-17-4-4-GR

Quant Time: Sep 16 07:01:38 2022
 Quant Method : Z:\voasrv\HPCHEM1\MSVOA_N\methods\82N091522W.M
 Quant Title : SW846 8260
 QLast Update : Thu Sep 15 19:20:33 2022
 Response via : Initial Calibration

Compound	R.T.	QIon	Response	Conc	Units	Dev(Min)

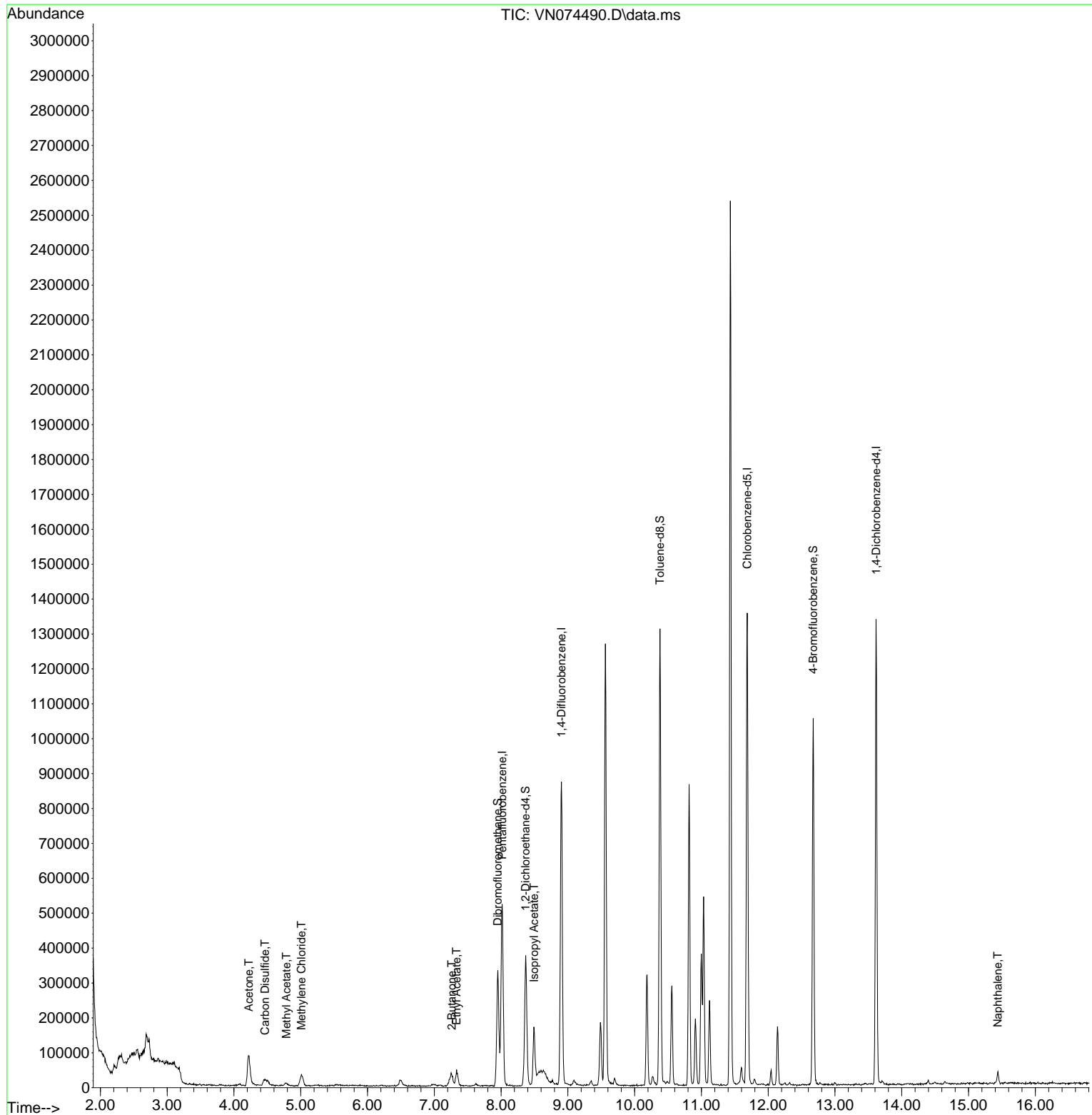
Internal Standards						
1) Pentafluorobenzene	8.016	168	376891	50.000	ug/l	# 0.00
34) 1,4-Difluorobenzene	8.904	114	720056	50.000	ug/l	0.00
63) Chlorobenzene-d5	11.686	117	722593	50.000	ug/l	0.00
72) 1,4-Dichlorobenzene-d4	13.616	152	310025	50.000	ug/l	0.00
System Monitoring Compounds						
33) 1,2-Dichloroethane-d4	8.369	65	270409	42.285	ug/l	0.00
Spiked Amount	50.000	Range	74 - 125	Recovery	=	84.580%
35) Dibromofluoromethane	7.951	113	224460	46.927	ug/l	0.00
Spiked Amount	50.000	Range	75 - 124	Recovery	=	93.860%
50) Toluene-d8	10.380	98	837311	45.264	ug/l	0.00
Spiked Amount	50.000	Range	86 - 113	Recovery	=	90.520%
62) 4-Bromofluorobenzene	12.674	95	335391	52.937	ug/l	0.00
Spiked Amount	50.000	Range	83 - 123	Recovery	=	105.880%
Target Compounds						
						Qvalue
16) Acetone	4.222	43	164250	40.139	ug/l	90
17) Carbon Disulfide	4.463	76	34413	2.528	ug/l	# 89
18) Methyl Acetate	4.787	43	16560	1.303	ug/l	# 87
20) Methylene Chloride	5.010	84	21630	3.491	ug/l	# 75
25) 2-Butanone	7.263	43	49523	7.289	ug/l	# 84
37) Ethyl Acetate	7.334	43	64477	4.931	ug/l	98
43) Isopropyl Acetate	8.492	43	203449	9.934	ug/l	# 84
95) Naphthalene	15.439	128	23762	2.456	ug/l	97

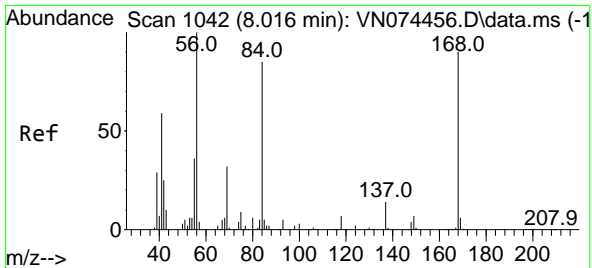
(#) = qualifier out of range (m) = manual integration (+) = signals summed

Data Path : Z:\voasrv\HPCHEM1\MSVOA_N\Data\VN091522\
 Data File : VN074490.D
 Acq On : 16 Sep 2022 03:41
 Operator : JC\MD
 Sample : N4630-20
 Misc : 5.0mL/MSVOA_N/WATER
 ALS Vial : 42 Sample Multiplier: 1

Instrument :
 MSVOA_N
 ClientSampleId :
 WC-17-4-4-GR

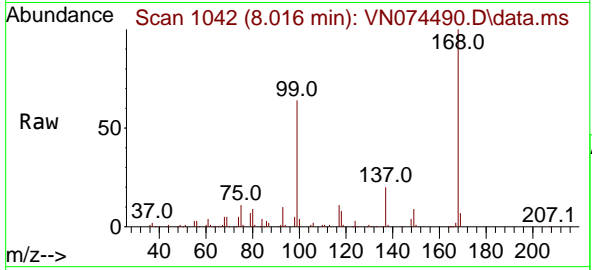
Quant Time: Sep 16 07:01:38 2022
 Quant Method : Z:\voasrv\HPCHEM1\MSVOA_N\methods\82N091522W.M
 Quant Title : SW846 8260
 QLast Update : Thu Sep 15 19:20:33 2022
 Response via : Initial Calibration



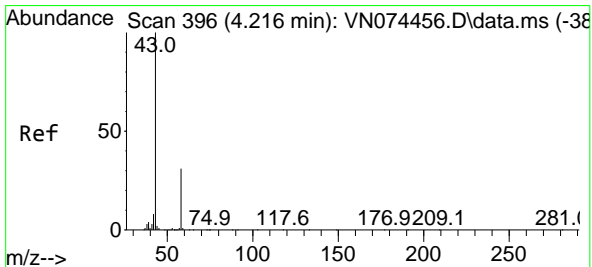
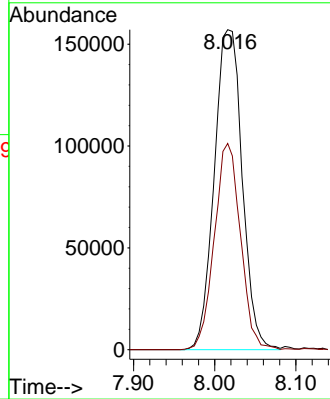
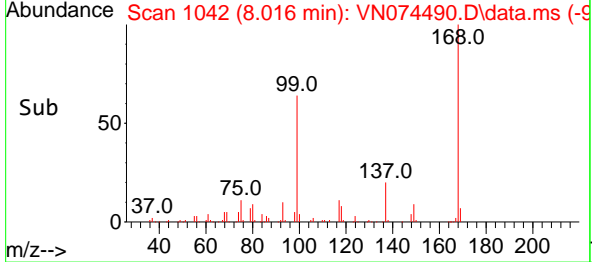


#1
 Pentafluorobenzene
 Concen: 50.000 ug/l
 RT: 8.016 min Scan# 10
 Delta R.T. -0.000 min
 Lab File: VN074490.D
 Acq: 16 Sep 2022 03:41

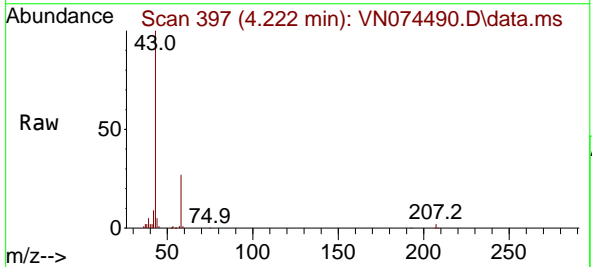
Instrument :
 MSVOA_N
 ClientSampleId :
 WC-17-4-4-GR



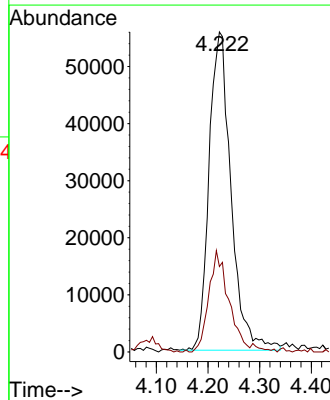
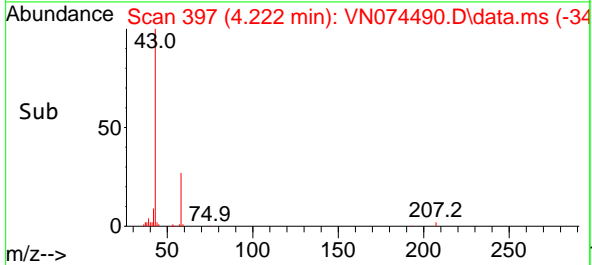
Tgt Ion:168 Resp: 376891
 Ion Ratio Lower Upper
 168 100
 99 64.4 42.3 63.5#

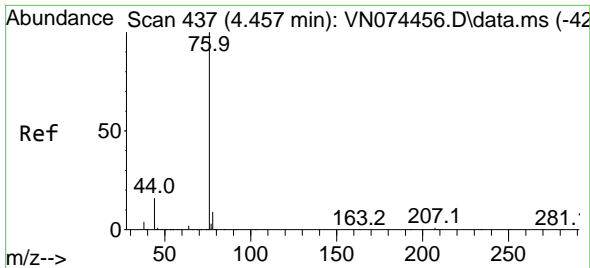


#16
 Acetone
 Concen: 40.139 ug/l
 RT: 4.222 min Scan# 397
 Delta R.T. 0.006 min
 Lab File: VN074490.D
 Acq: 16 Sep 2022 03:41



Tgt Ion: 43 Resp: 164250
 Ion Ratio Lower Upper
 43 100
 58 26.9 26.0 39.0

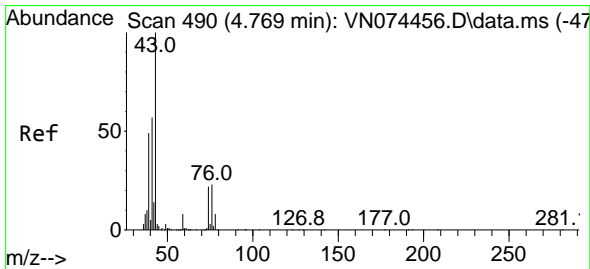
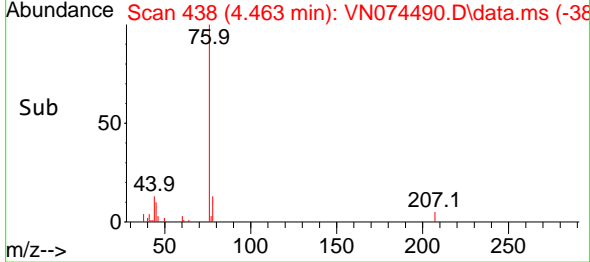
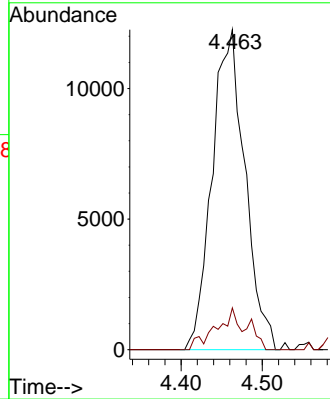
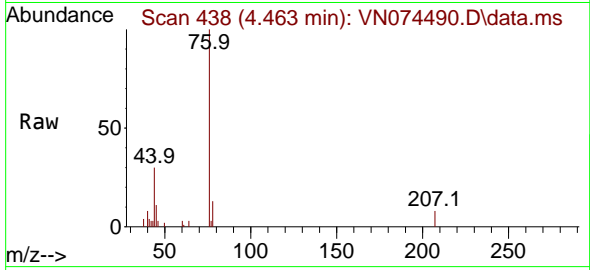




#17
 Carbon Disulfide
 Concen: 2.528 ug/l
 RT: 4.463 min Scan# 411
 Delta R.T. 0.006 min
 Lab File: VN074490.D
 Acq: 16 Sep 2022 03:41

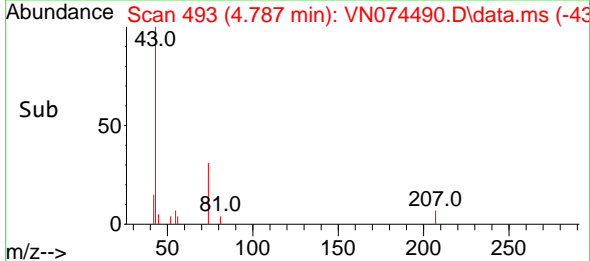
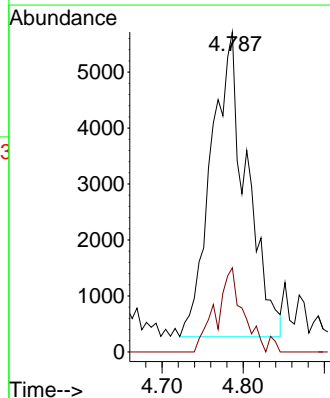
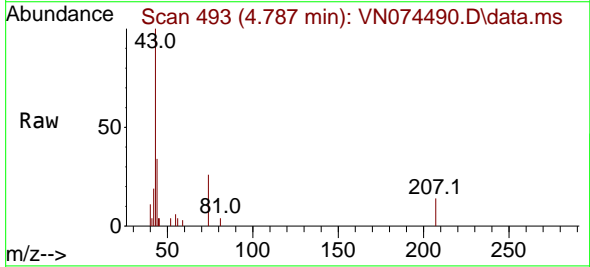
Instrument : MSVOA_N
 ClientSampleId : WC-17-4-4-GR

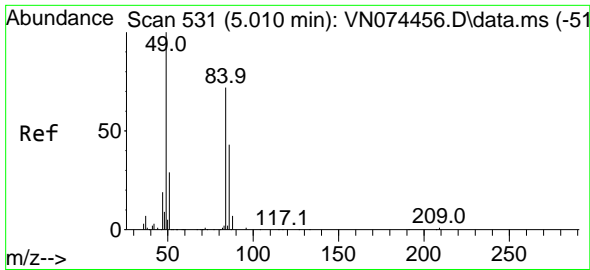
Tgt Ion: 76 Resp: 34413
 Ion Ratio Lower Upper
 76 100
 78 13.1 7.2 10.8#



#18
 Methyl Acetate
 Concen: 1.303 ug/l
 RT: 4.787 min Scan# 493
 Delta R.T. 0.018 min
 Lab File: VN074490.D
 Acq: 16 Sep 2022 03:41

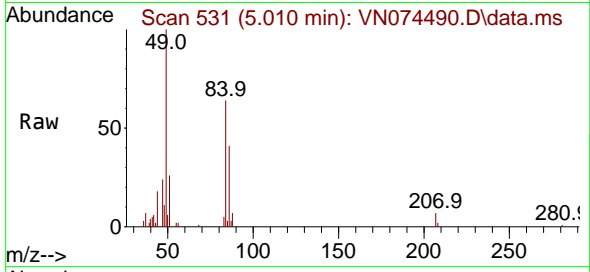
Tgt Ion: 43 Resp: 16560
 Ion Ratio Lower Upper
 43 100
 74 20.4 21.6 32.4#





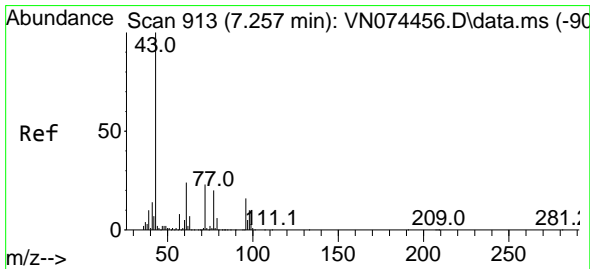
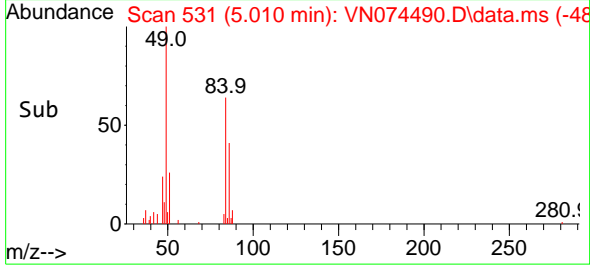
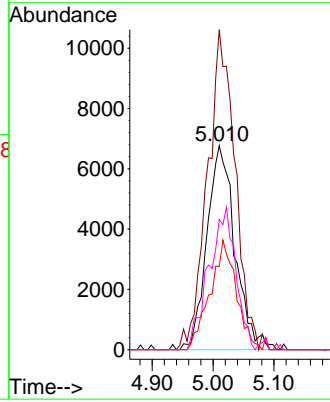
#20
 Methylene Chloride
 Concen: 3.491 ug/l
 RT: 5.010 min Scan# 51
 Delta R.T. 0.000 min
 Lab File: VN074490.D
 Acq: 16 Sep 2022 03:41

Instrument :
 MSVOA_N
 ClientSampleId :
 WC-17-4-4-GR



Tgt Ion: 84 Resp: 21630

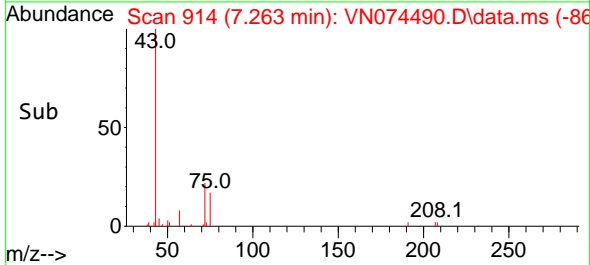
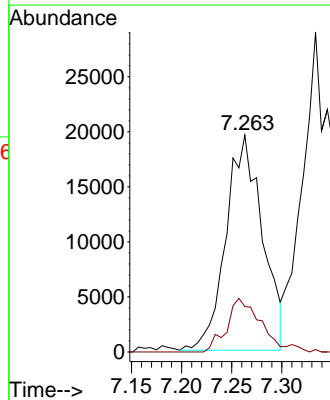
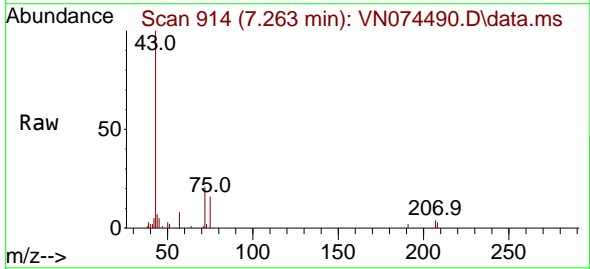
Ion	Ratio	Lower	Upper
84	100		
49	156.8	88.3	132.5#
51	40.9	28.2	42.2
86	63.8	50.6	76.0

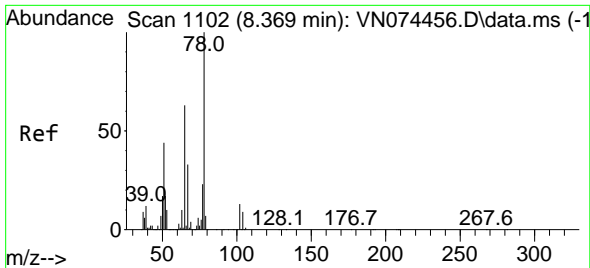


#25
 2-Butanone
 Concen: 7.289 ug/l
 RT: 7.263 min Scan# 914
 Delta R.T. 0.006 min
 Lab File: VN074490.D
 Acq: 16 Sep 2022 03:41

Tgt Ion: 43 Resp: 49523

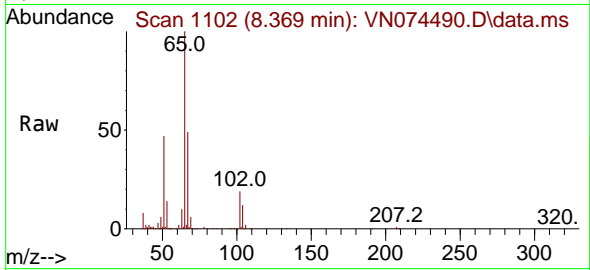
Ion	Ratio	Lower	Upper
43	100		
72	21.1	23.7	35.5#



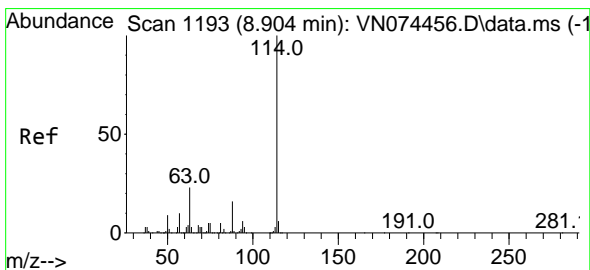
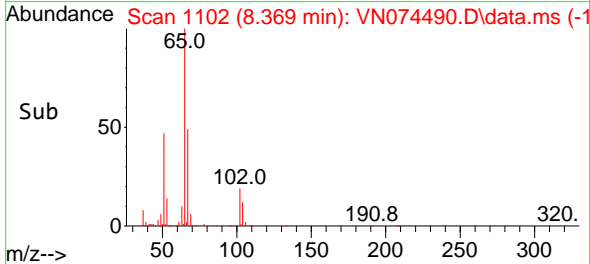
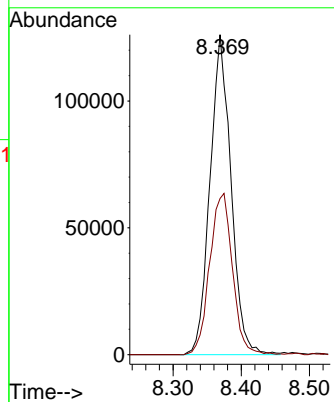


#33
 1,2-Dichloroethane-d4
 Concen: 42.285 ug/l
 RT: 8.369 min Scan# 1102
 Delta R.T. -0.000 min
 Lab File: VN074490.D
 Acq: 16 Sep 2022 03:41

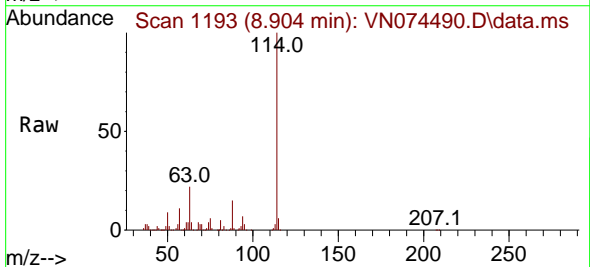
Instrument : MSVOA_N
 ClientSampleId : WC-17-4-4-GR



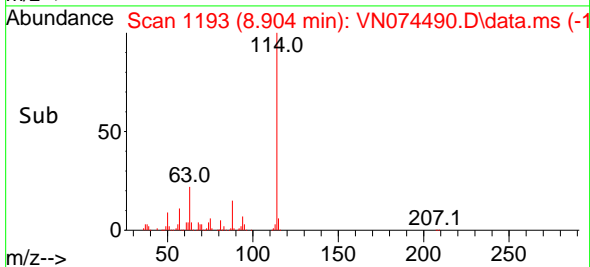
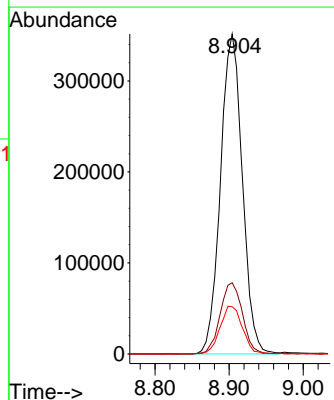
Tgt Ion: 65 Resp: 270409
 Ion Ratio Lower Upper
 65 100
 67 54.7 0.0 104.8

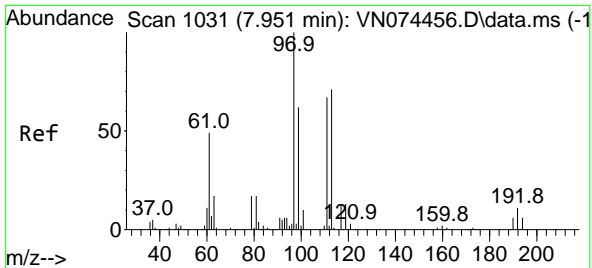


#34
 1,4-Difluorobenzene
 Concen: 50.000 ug/l
 RT: 8.904 min Scan# 1193
 Delta R.T. 0.000 min
 Lab File: VN074490.D
 Acq: 16 Sep 2022 03:41



Tgt Ion: 114 Resp: 720056
 Ion Ratio Lower Upper
 114 100
 63 22.2 0.0 40.0
 88 14.7 0.0 32.6

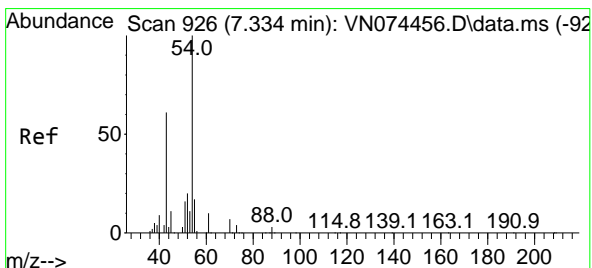
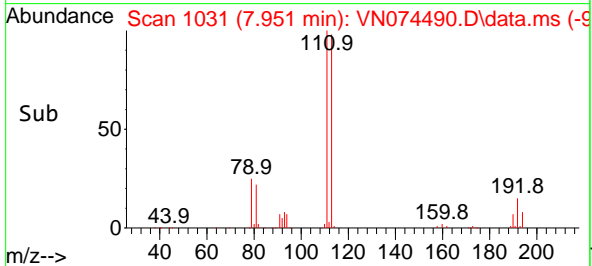
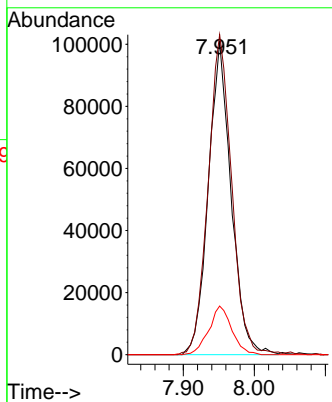
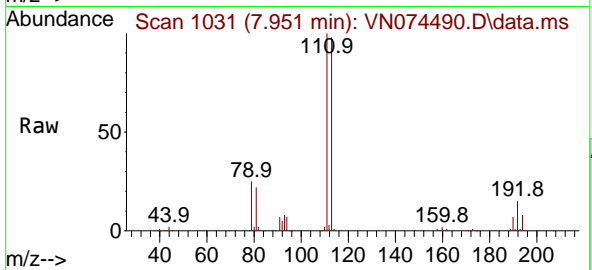




#35
 Dibromofluoromethane
 Concen: 46.927 ug/l
 RT: 7.951 min Scan# 1031
 Delta R.T. 0.000 min
 Lab File: VN074490.D
 Acq: 16 Sep 2022 03:41

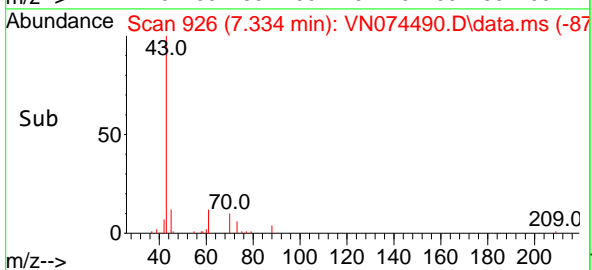
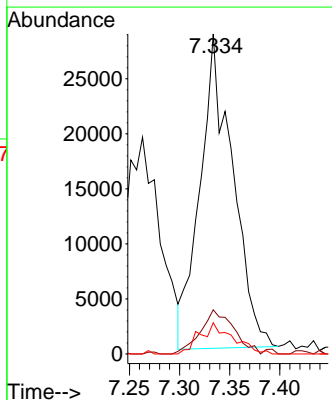
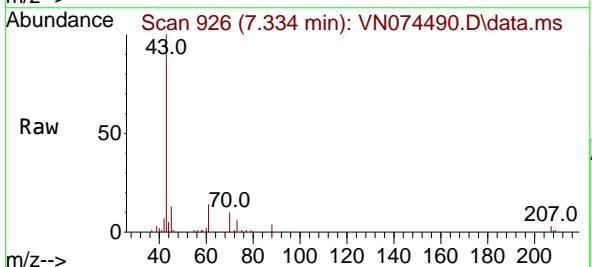
Instrument :
 MSVOA_N
 ClientSampleId :
 WC-17-4-4-GR

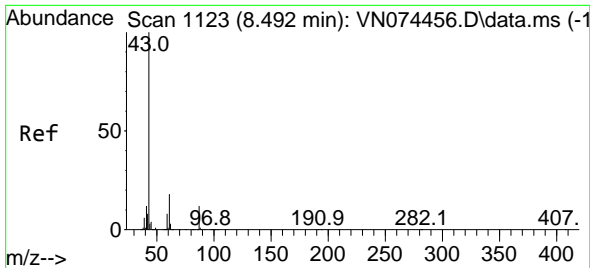
Tgt Ion:113 Resp: 224460
 Ion Ratio Lower Upper
 113 100
 111 105.5 81.4 122.0
 192 15.7 17.0 25.6#



#37
 Ethyl Acetate
 Concen: 4.931 ug/l
 RT: 7.334 min Scan# 926
 Delta R.T. -0.000 min
 Lab File: VN074490.D
 Acq: 16 Sep 2022 03:41

Tgt Ion: 43 Resp: 64477
 Ion Ratio Lower Upper
 43 100
 61 14.7 11.8 17.6
 70 10.1 9.3 13.9



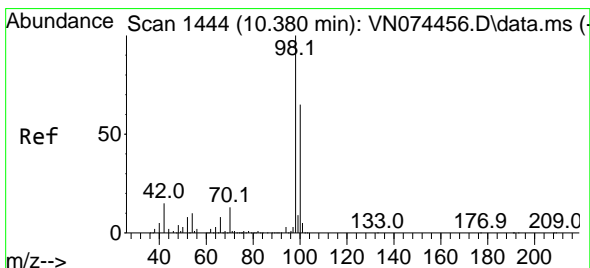
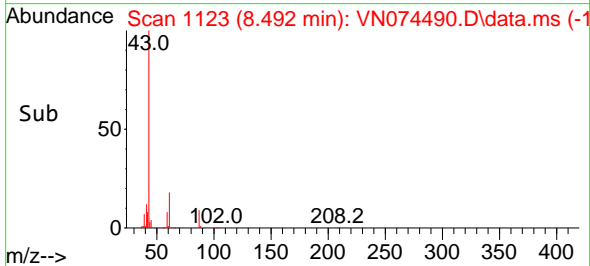
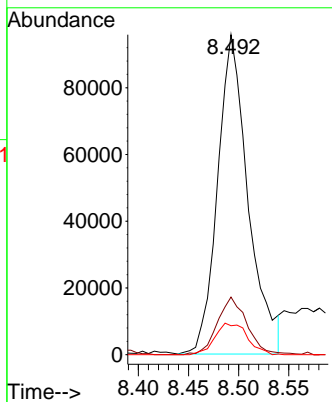
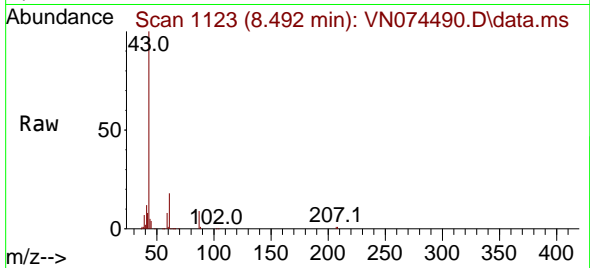


#43
 Isopropyl Acetate
 Concen: 9.934 ug/l
 RT: 8.492 min Scan# 1123
 Delta R.T. 0.000 min
 Lab File: VN074490.D
 Acq: 16 Sep 2022 03:41

Instrument : MSVOA_N
 ClientSampleId : WC-17-4-4-GR

Tgt Ion: 43 Resp: 203449

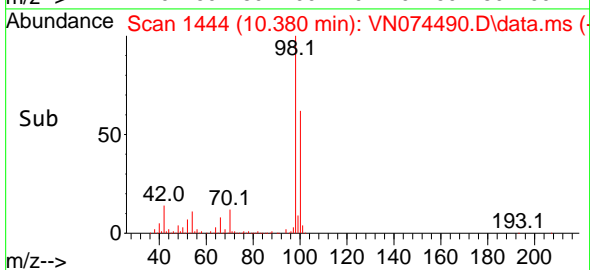
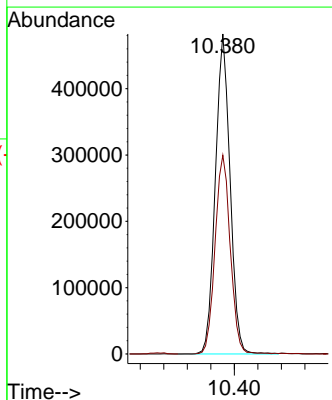
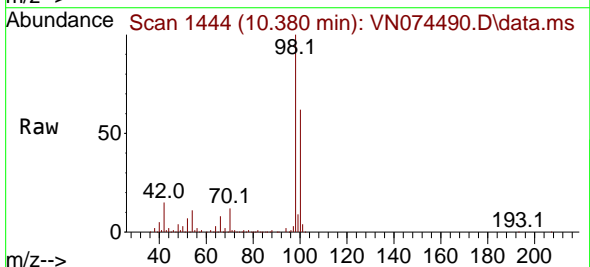
Ion	Ratio	Lower	Upper
43	100		
61	17.5	21.9	32.9#
87	10.4	12.0	18.0#

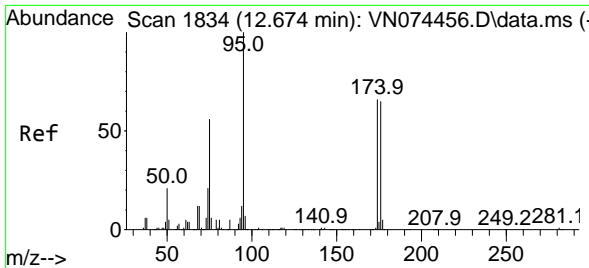


#50
 Toluene-d8
 Concen: 45.264 ug/l
 RT: 10.380 min Scan# 1444
 Delta R.T. 0.000 min
 Lab File: VN074490.D
 Acq: 16 Sep 2022 03:41

Tgt Ion: 98 Resp: 837311

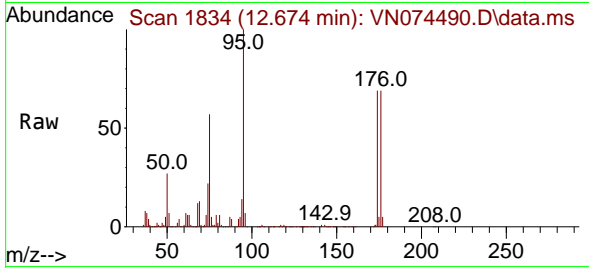
Ion	Ratio	Lower	Upper
98	100		
100	64.2	52.6	78.8



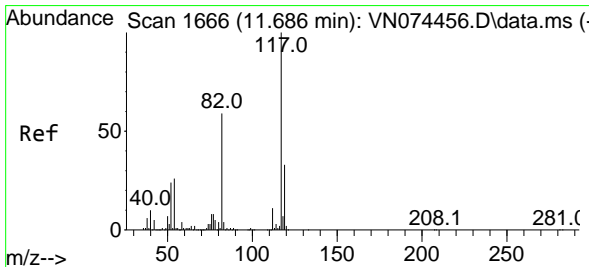
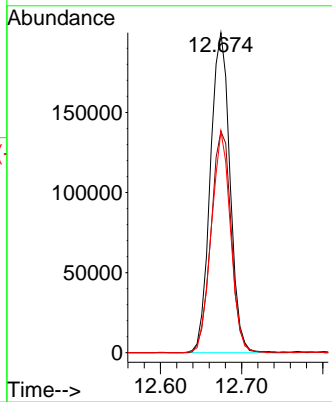
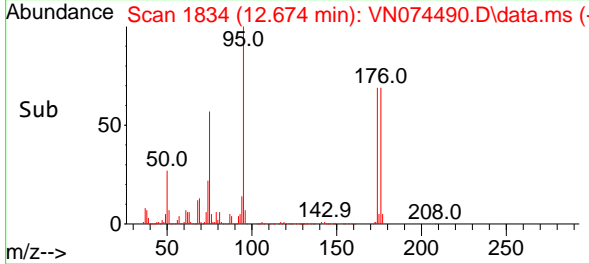


#62
 4-Bromofluorobenzene
 Concen: 52.937 ug/l
 RT: 12.674 min Scan# 1834
 Delta R.T. 0.000 min
 Lab File: VN074490.D
 Acq: 16 Sep 2022 03:41

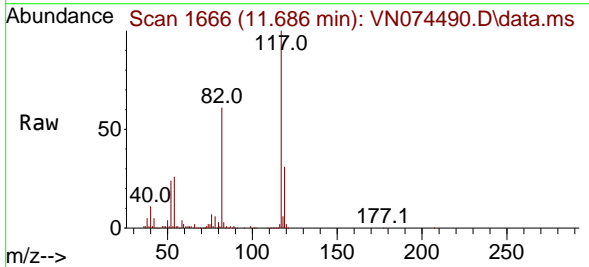
Instrument : MSVOA_N
 ClientSampleId : WC-17-4-4-GR



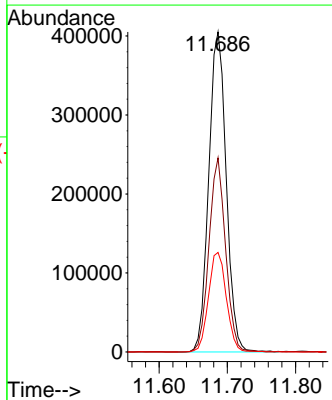
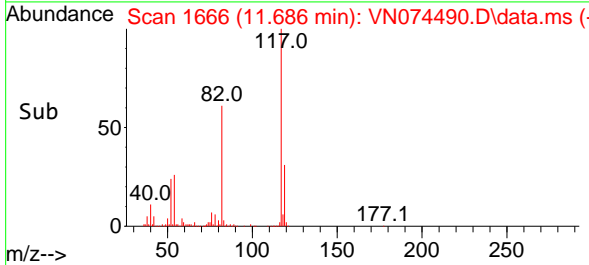
Tgt Ion: 95 Resp: 335391
 Ion Ratio Lower Upper
 95 100
 174 71.1 0.0 167.6
 176 68.0 0.0 163.4

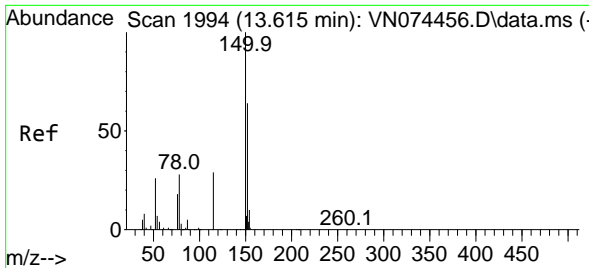


#63
 Chlorobenzene-d5
 Concen: 50.000 ug/l
 RT: 11.686 min Scan# 1666
 Delta R.T. 0.000 min
 Lab File: VN074490.D
 Acq: 16 Sep 2022 03:41



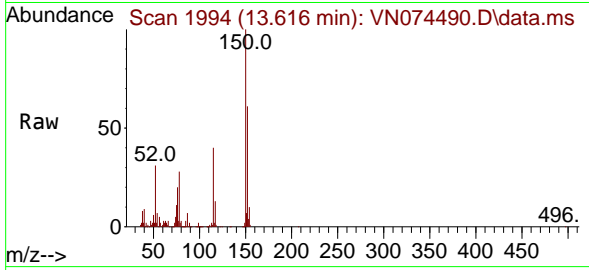
Tgt Ion: 117 Resp: 722593
 Ion Ratio Lower Upper
 117 100
 82 60.6 44.2 66.2
 119 31.1 25.4 38.0



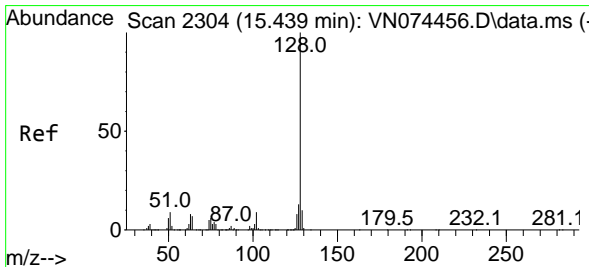
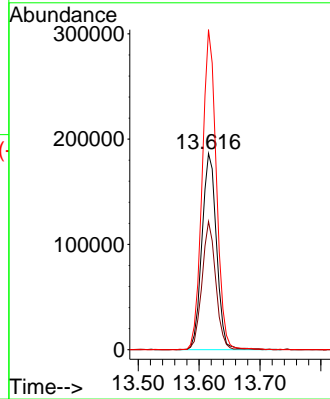
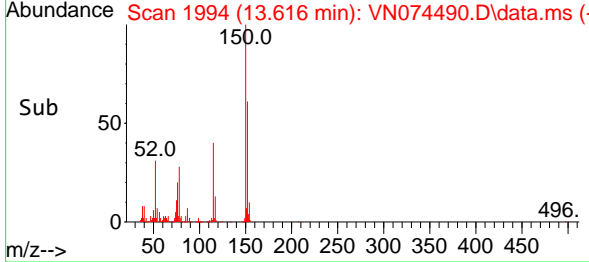


#72
 1,4-Dichlorobenzene-d4
 Concen: 50.000 ug/l
 RT: 13.616 min Scan# 1994
 Delta R.T. 0.001 min
 Lab File: VN074490.D
 Acq: 16 Sep 2022 03:41

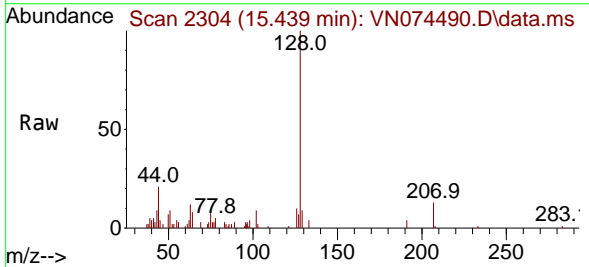
Instrument : MSVOA_N
 ClientSampleId : WC-17-4-4-GR



Tgt Ion:152 Resp: 31025
 Ion Ratio Lower Upper
 152 100
 115 61.5 28.9 86.7
 150 158.8 0.0 356.2



#95
 Naphthalene
 Concen: 2.456 ug/l
 RT: 15.439 min Scan# 2304
 Delta R.T. -0.000 min
 Lab File: VN074490.D
 Acq: 16 Sep 2022 03:41



Tgt Ion:128 Resp: 23762
 Ion Ratio Lower Upper
 128 100
 127 11.8 10.3 15.5
 129 11.7 8.6 13.0

