

Data Path : Z:\voasrv\HPCHEM1\MSVOA_N\Data\VN091522\
 Data File : VN074482.D
 Acq On : 16 Sep 2022 00:27
 Operator : JC\MD
 Sample : N4511-02
 Misc : 5.0mL/MSVOA_N/WATER
 ALS Vial : 34 Sample Multiplier: 1

Instrument :
 MSVOA_N
 ClientSampleId :
 S1-AQ_DM-IDW-20220902

Integration Parameters: RTEINT.P

Integrator: RTE
 Smoothing : ON Filtering: 5
 Sampling : 1 Min Area: 3 % of largest Peak
 Start Thrs: 0.2 Max Peaks: 100
 Stop Thrs : 0 Peak Location: TOP

If leading or trailing edge < 100 prefer < Baseline drop else tangent >
 Peak separation: 5

Method : Z:\voasrv\HPCHEM1\MSVOA_N\methods\82N091522W.M
 Title : SW846 8260

Signal : TIC: VN074482.D\data.ms

peak #	R.T. min	first scan	max scan	last scan	PK TY	peak height	corr. area	corr. % max.	% of total
1	2.199	47	53	59	rBV	156994	323594	14.19%	2.500%
2	2.263	62	64	67	rVV2	17888	24814	1.09%	0.192%
3	4.510	438	446	449	rBV5	10324	24968	1.10%	0.193%
4	7.951	1022	1031	1036	rBV	312003	750840	32.94%	5.801%
5	8.016	1036	1042	1051	rVB	508912	1144494	50.20%	8.842%
6	8.369	1093	1102	1113	rBV2	340974	812536	35.64%	6.277%
7	8.904	1183	1193	1203	rBV	854899	1717293	75.33%	13.267%
8	10.380	1435	1444	1453	rBV	1252664	2279759	100.00%	17.612%
9	11.686	1657	1666	1676	rBV	1284187	2246847	98.56%	17.358%
10	12.674	1825	1834	1843	rBV	1010148	1652791	72.50%	12.769%
11	13.615	1986	1994	2003	rBV	1143114	1929279	84.63%	14.905%
12	15.439	2297	2304	2310	rBV4	17457	36839	1.62%	0.285%

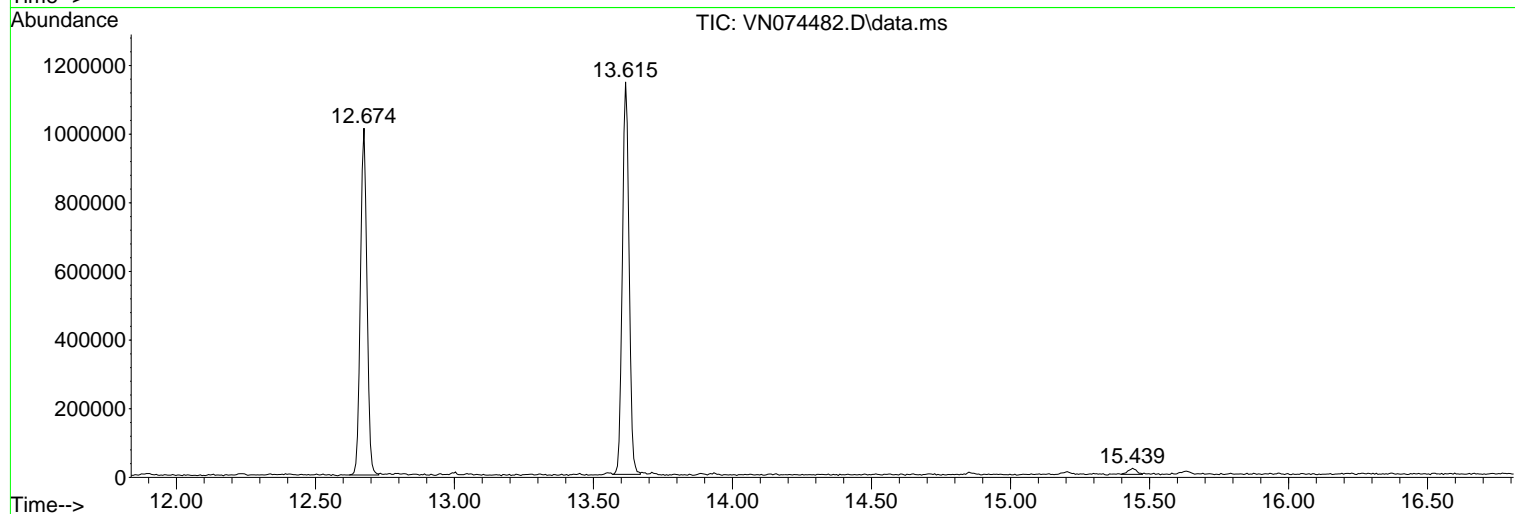
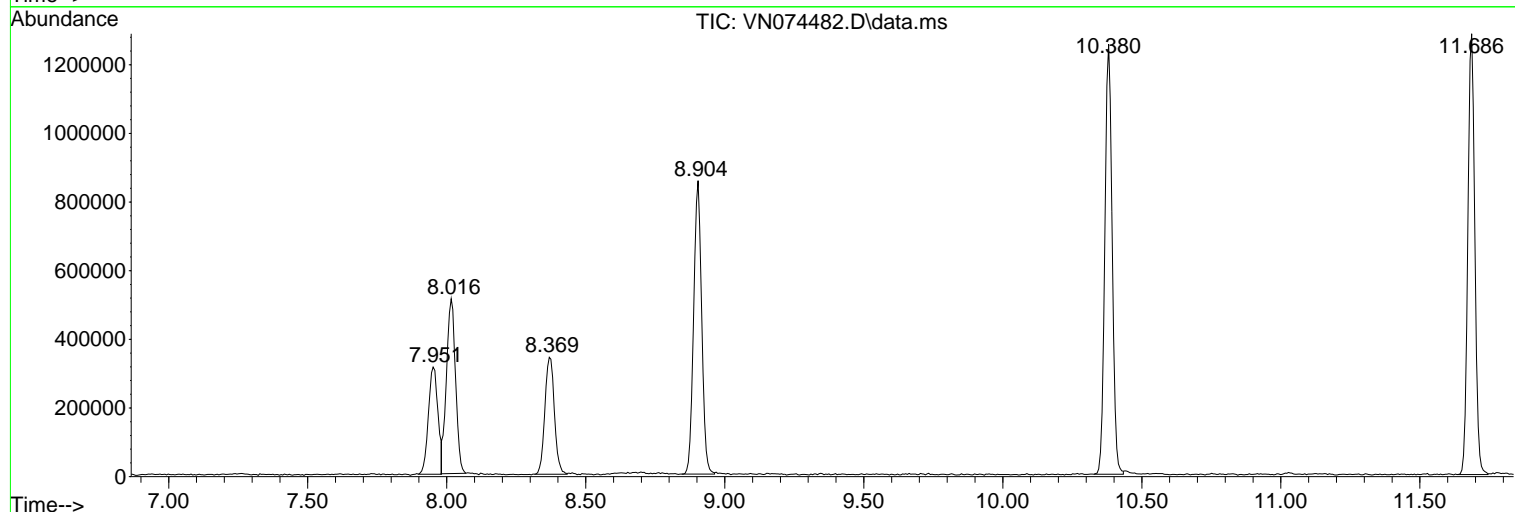
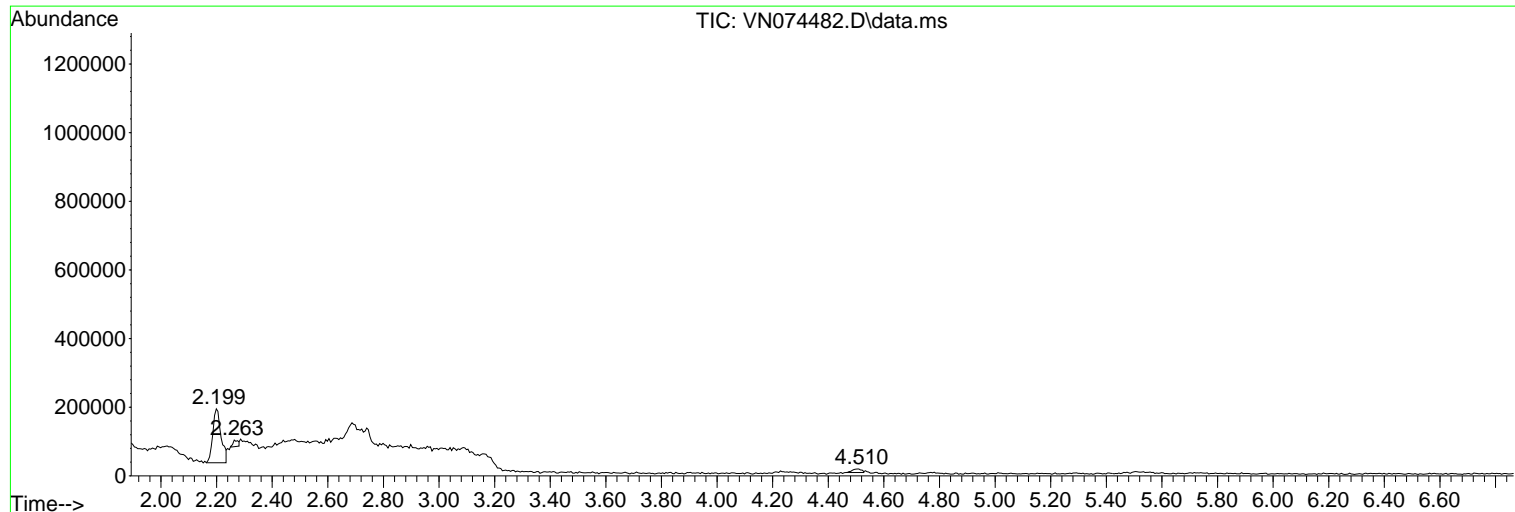
Sum of corrected areas: 12944054

Data Path : Z:\voasrv\HPCHEM1\MSVOA_N\Data\VN091522\
 Data File : VN074482.D
 Acq On : 16 Sep 2022 00:27
 Operator : JC\MD
 Sample : N4511-02
 Misc : 5.0mL/MSVOA_N/WATER
 ALS Vial : 34 Sample Multiplier: 1

Instrument :
 MSVOA_N
 ClientSampleId :
 S1-AQ_DM-IDW-20220902

Quant Method : Z:\voasrv\HPCHEM1\MSVOA_N\methods\82N091522W.M
 Quant Title : SW846 8260

TIC Library : C:\Database\NIST20.L
 TIC Integration Parameters: LSCINT.P



Data Path : Z:\voasrv\HPCHEM1\MSVOA_N\Data\VN091522\
Data File : VN074482.D
Acq On : 16 Sep 2022 00:27
Operator : JC\MD
Sample : N4511-02
Misc : 5.0mL/MSVOA_N/WATER
ALS Vial : 34 Sample Multiplier: 1

Instrument :
MSVOA_N
ClientSampleId :
S1-AQ_DM-IDW-20220902

Quant Method : Z:\voasrv\HPCHEM1\MSVOA_N\methods\82N091522W.M
Quant Title : SW846 8260

TIC Library : C:\Database\NIST20.L
TIC Integration Parameters: LSCINT.P

No Library Search Compounds Detected

Data Path : Z:\voasrv\HPCHEM1\MSVOA_N\Data\VN091522\
Data File : VN074482.D
Acq On : 16 Sep 2022 00:27
Operator : JC\MD
Sample : N4511-02
Misc : 5.0mL/MSVOA_N/WATER
ALS Vial : 34 Sample Multiplier: 1

Instrument :
MSVOA_N
ClientSampleId :
S1-AQ_DM-IDW-20220902

Quant Method : Z:\voasrv\HPCHEM1\MSVOA_N\methods\82N091522W.M
Quant Title : SW846 8260

TIC Library : C:\Database\NIST20.L
TIC Integration Parameters: LSCINT.P

TIC Top Hit name	RT	EstConc	Units	Response	#	RT	Resp	Conc
------------------	----	---------	-------	----------	---	----	------	------
