

Data Path : Z:\voasrv\HPCHEM1\MSVOA_N\Data\VN110724\
 Data File : VN084730.D
 Acq On : 07 Nov 2024 18:46
 Operator : JC\MD
 Sample : VIBLK
 Misc : 5.0mL/MSVOA_N/WATER
 ALS Vial : 14 Sample Multiplier: 1

Instrument :
 MSVOA_N
 ClientSampleId :

Quant Time: Nov 08 00:32:58 2024
 Quant Method : Z:\voasrv\HPCHEM1\MSVOA_N\methods\82N103024W.M
 Quant Title : SW846 8260
 QLast Update : Thu Oct 31 18:45:38 2024
 Response via : Initial Calibration

Compound	R.T.	QIon	Response	Conc Units	Dev(Min)

Internal Standards					
1) Pentafluorobenzene	8.224	168	166961	50.000 ug/l	0.00
34) 1,4-Difluorobenzene	9.100	114	286510	50.000 ug/l	0.00
63) Chlorobenzene-d5	11.865	117	246182	50.000 ug/l	0.00
72) 1,4-Dichlorobenzene-d4	13.788	152	113078	50.000 ug/l	0.00
System Monitoring Compounds					
33) 1,2-Dichloroethane-d4	8.577	65	115796	48.019 ug/l	0.00
Spiked Amount	50.000	Range 74 - 125	Recovery	=	96.040%
35) Dibromofluoromethane	8.165	113	93550	48.238 ug/l	0.00
Spiked Amount	50.000	Range 75 - 124	Recovery	=	96.480%
50) Toluene-d8	10.565	98	329989	46.192 ug/l	0.00
Spiked Amount	50.000	Range 86 - 113	Recovery	=	92.380%
62) 4-Bromofluorobenzene	12.847	95	117393	43.969 ug/l	0.00
Spiked Amount	50.000	Range 77 - 121	Recovery	=	87.940%
Target Compounds					
					Qvalue
3) Chloromethane	2.365	50	952	Below Cal	89
5) Bromomethane	2.906	94	435	0.398 ug/l #	63
6) Chloroethane	3.112	64	138	Below Cal #	45
11) Tert butyl alcohol	5.489	59	2591	8.140 ug/l #	73
16) Acetone	4.448	43	65	Below Cal #	44
17) Carbon Disulfide	4.706	76	2118	0.362 ug/l #	75
18) Methyl Acetate	5.018	43	2374	Below Cal #	51
20) Methylene Chloride	5.283	84	507	0.239 ug/l #	47
31) Cyclohexane	8.218	56	3909	1.174 ug/l #	1
36) 1,1-Dichloropropene	8.371	75	574	0.213 ug/l #	42
38) Carbon Tetrachloride	8.224	117	17523	5.829 ug/l #	11
43) Isopropyl Acetate	8.700	43	699	Below Cal #	56
53) t-1,3-Dichloropropene	10.841	75	903	0.289 ug/l	89
59) 2-Hexanone	11.188	43	610	0.360 ug/l #	37
65) Chlorobenzene	11.894	112	2110	0.383 ug/l	93
67) Ethyl Benzene	11.965	91	2894	0.315 ug/l	98
68) m/p-Xylenes	12.071	106	1681	0.483 ug/l	83
70) Styrene	12.412	104	2043	0.360 ug/l	95
76) 1,2,3-Trichloropropane	12.847	75	59624	26.378 ug/l #	1
77) Bromobenzene	12.976	156	1289	0.605 ug/l	68
78) n-propylbenzene	13.035	91	4489	0.483 ug/l	99
79) 2-Chlorotoluene	13.123	91	2420	0.399 ug/l	87
80) 1,3,5-Trimethylbenzene	13.165	105	2113	0.322 ug/l	93
81) trans-1,4-Dichloro-2-b...	12.847	75	59624	62.579 ug/l #	11
82) 4-Chlorotoluene	13.223	91	4078	0.639 ug/l	95
84) 1,2,4-Trimethylbenzene	13.476	105	2094	0.309 ug/l	94
85) sec-Butylbenzene	13.612	105	2347	0.306 ug/l	94
86) p-Isopropyltoluene	13.729	119	2164	0.344 ug/l	88
87) 1,3-Dichlorobenzene	13.735	146	3333	0.802 ug/l	98
89) n-Butylbenzene	14.053	91	3607	0.612 ug/l	94
91) 1,2-Dichlorobenzene	14.106	146	2843	0.712 ug/l	91
93) 1,2,4-Trichlorobenzene	15.382	180	2490	1.139 ug/l	98
94) Hexachlorobutadiene	15.506	225	589	0.613 ug/l	87
95) Naphthalene	15.641	128	6228	0.952 ug/l	99
96) 1,2,3-Trichlorobenzene	15.835	180	2263	1.066 ug/l	90

Data Path : Z:\voasrv\HPCHEM1\MSVOA_N\Data\VN110724\
Data File : VN084730.D
Acq On : 07 Nov 2024 18:46
Operator : JC\MD
Sample : VIBLK
Misc : 5.0mL/MSVOA_N/WATER
ALS Vial : 14 Sample Multiplier: 1

Instrument :
MSVOA_N
ClientSampleId :

Quant Time: Nov 08 00:32:58 2024
Quant Method : Z:\voasrv\HPCHEM1\MSVOA_N\methods\82N103024W.M
Quant Title : SW846 8260
QLast Update : Thu Oct 31 18:45:38 2024
Response via : Initial Calibration

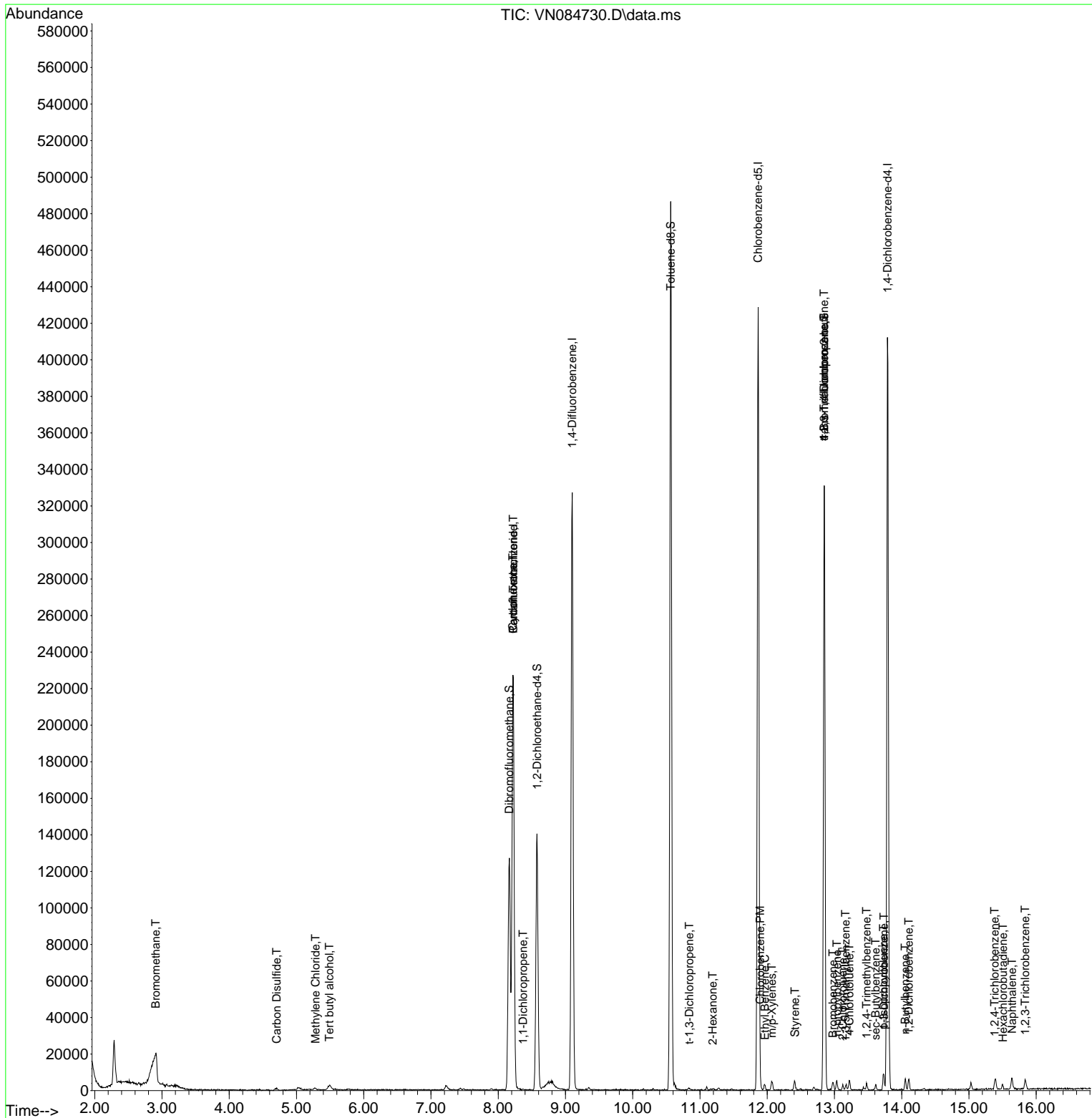
Compound	R.T.	QIon	Response	Conc	Units	Dev(Min)
----------	------	------	----------	------	-------	----------

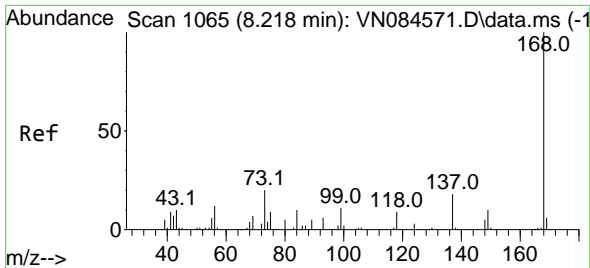
(#) = qualifier out of range (m) = manual integration (+) = signals summed

Data Path : Z:\voasrv\HPCHEM1\MSVOA_N\Data\VN110724\
 Data File : VN084730.D
 Acq On : 07 Nov 2024 18:46
 Operator : JC\MD
 Sample : VIBLK
 Misc : 5.0mL/MSVOA_N/WATER
 ALS Vial : 14 Sample Multiplier: 1

Instrument :
 MSVOA_N
 ClientSampleId :

Quant Time: Nov 08 00:32:58 2024
 Quant Method : Z:\voasrv\HPCHEM1\MSVOA_N\methods\82N103024W.M
 Quant Title : SW846 8260
 QLast Update : Thu Oct 31 18:45:38 2024
 Response via : Initial Calibration

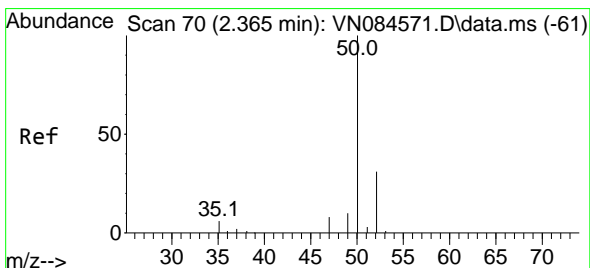
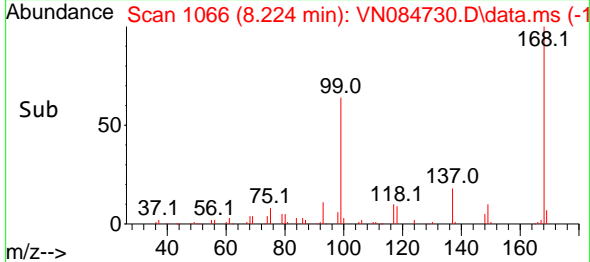
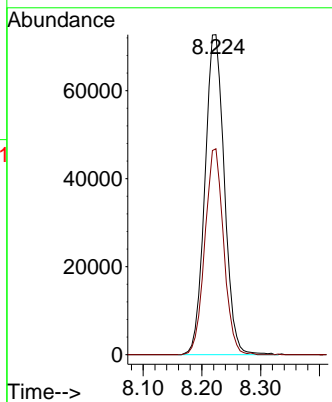
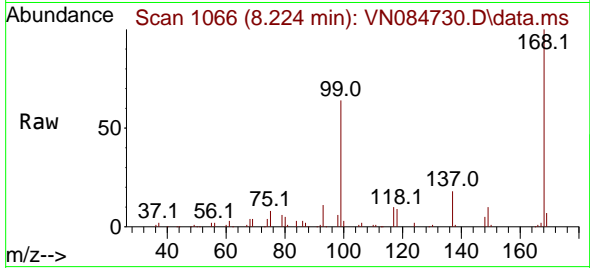




#1
 Pentafluorobenzene
 Concen: 50.000 ug/l
 RT: 8.224 min Scan# 10
 Delta R.T. -0.000 min
 Lab File: VN084730.D
 Acq: 07 Nov 2024 18:46

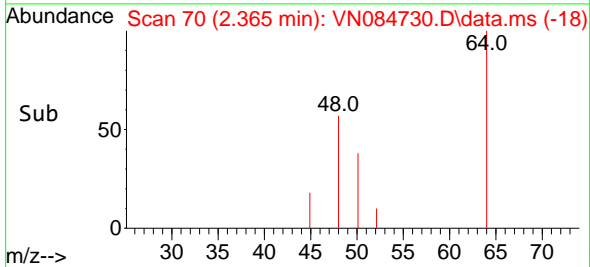
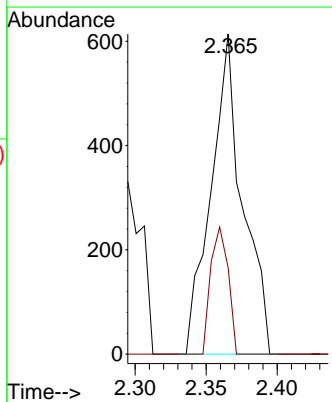
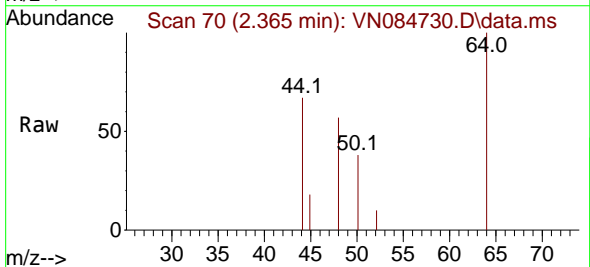
Instrument :
 MSVOA_N
 ClientSampleId :

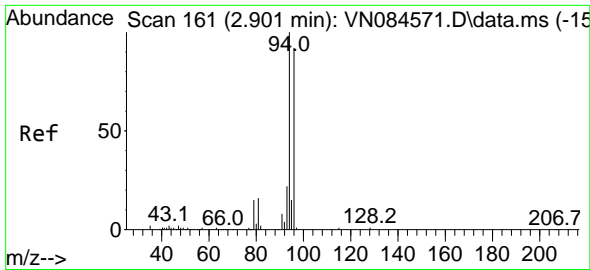
Tgt Ion:168 Resp: 166961
 Ion Ratio Lower Upper
 168 100
 99 64.4 54.2 81.2



#3
 Chloromethane
 Concen: Below Cal
 RT: 2.365 min Scan# 70
 Delta R.T. 0.006 min
 Lab File: VN084730.D
 Acq: 07 Nov 2024 18:46

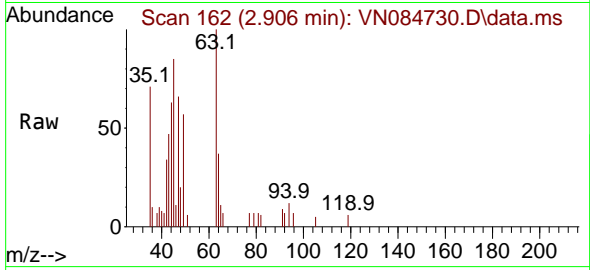
Tgt Ion: 50 Resp: 952
 Ion Ratio Lower Upper
 50 100
 52 27.0 26.8 40.2



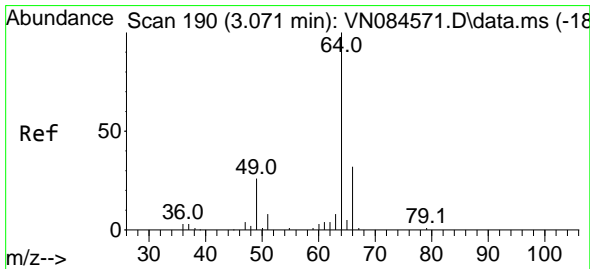
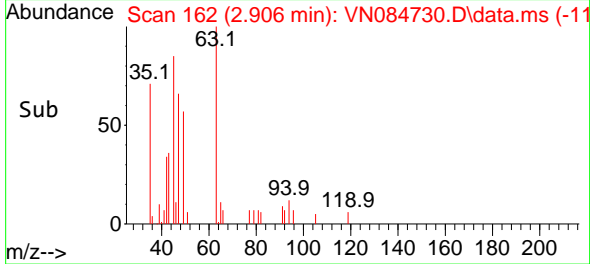
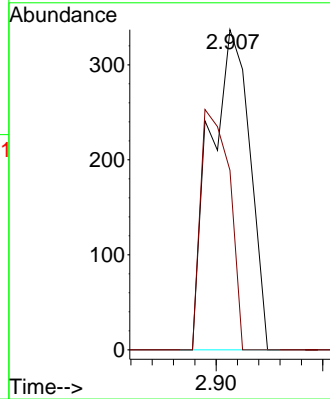


#5
 Bromomethane
 Concen: 0.398 ug/l
 RT: 2.906 min Scan# 11
 Delta R.T. -0.046 min
 Lab File: VN084730.D
 Acq: 07 Nov 2024 18:46

Instrument :
 MSVOA_N
 ClientSampleId :

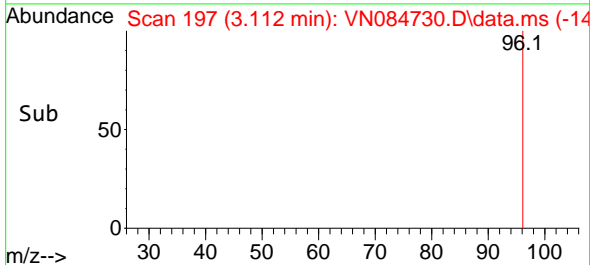
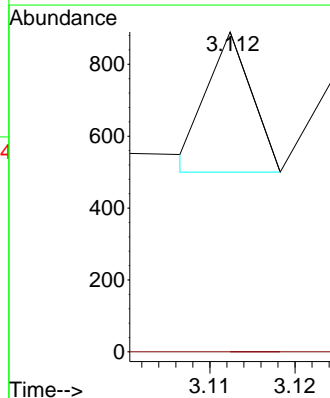
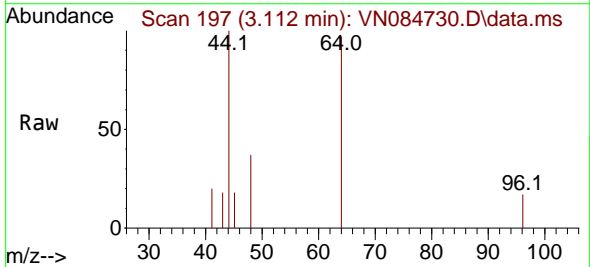


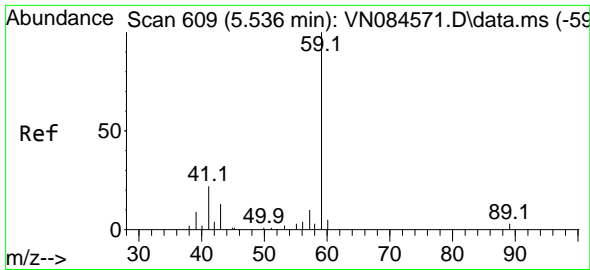
Tgt Ion: 94 Resp: 435
 Ion Ratio Lower Upper
 94 100
 96 56.1 72.9 109.3#



#6
 Chloroethane
 Concen: Below Cal
 RT: 3.112 min Scan# 197
 Delta R.T. -0.006 min
 Lab File: VN084730.D
 Acq: 07 Nov 2024 18:46

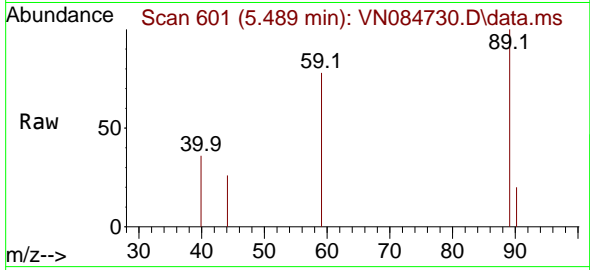
Tgt Ion: 64 Resp: 138
 Ion Ratio Lower Upper
 64 100
 66 0.0 23.5 35.3#



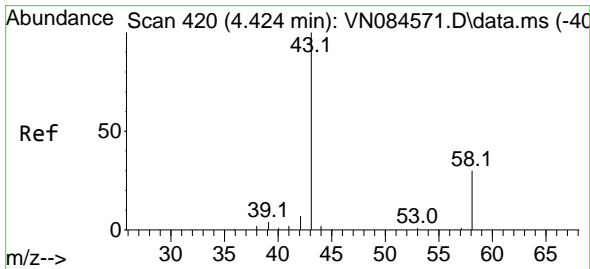
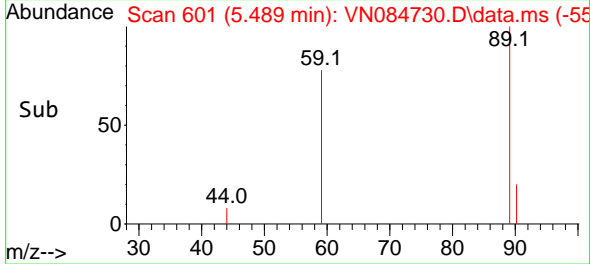
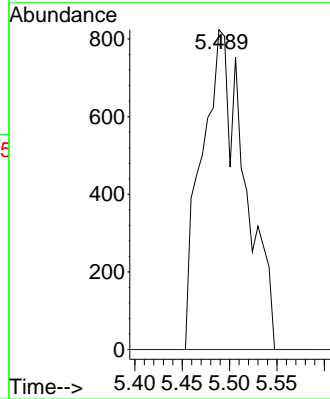


#11
 Tert butyl alcohol
 Concen: 8.140 ug/l
 RT: 5.489 min Scan# 601
 Delta R.T. -0.035 min
 Lab File: VN084730.D
 Acq: 07 Nov 2024 18:46

Instrument : MSVOA_N
 ClientSampleId :

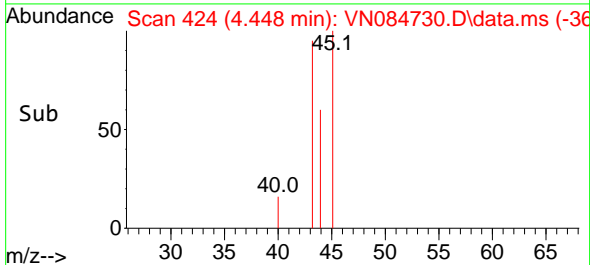
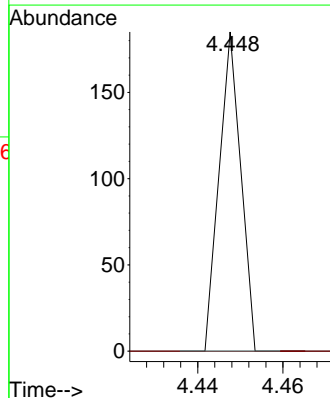
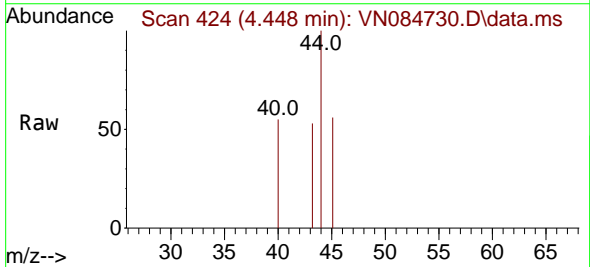


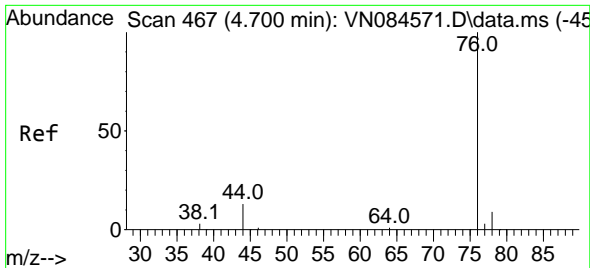
Tgt Ion: 59 Resp: 2591
 Ion Ratio Lower Upper
 59 100
 57 0.0 8.2 12.2#



#16
 Acetone
 Concen: Below Cal
 RT: 4.448 min Scan# 424
 Delta R.T. 0.024 min
 Lab File: VN084730.D
 Acq: 07 Nov 2024 18:46

Tgt Ion: 43 Resp: 65
 Ion Ratio Lower Upper
 43 100
 58 0.0 24.4 36.6#

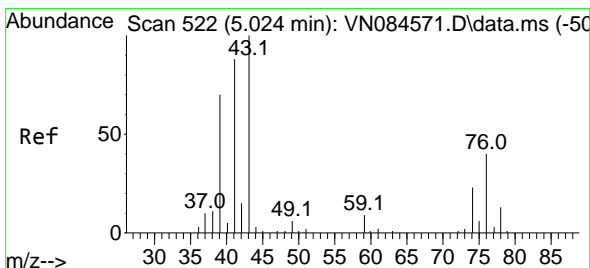
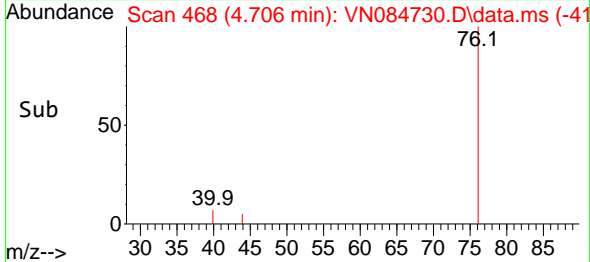
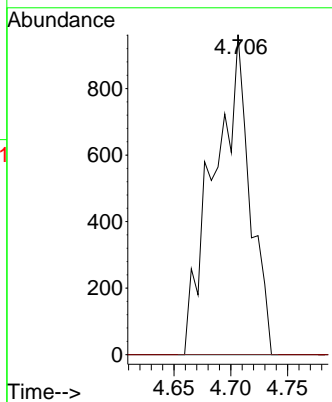
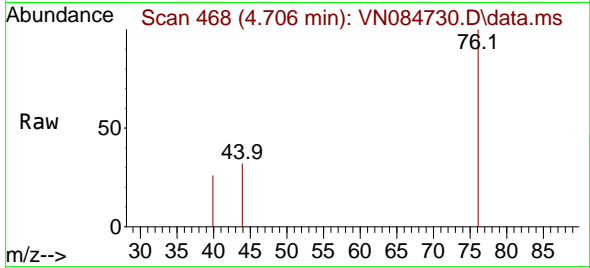




#17
 Carbon Disulfide
 Concen: 0.362 ug/l
 RT: 4.706 min Scan# 41
 Delta R.T. -0.006 min
 Lab File: VN084730.D
 Acq: 07 Nov 2024 18:46

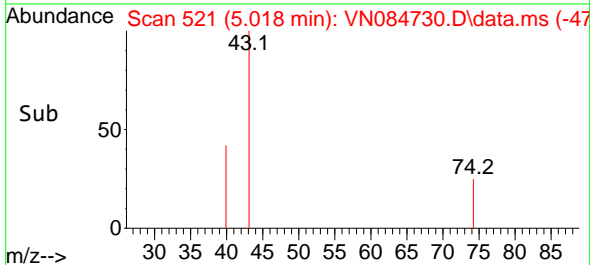
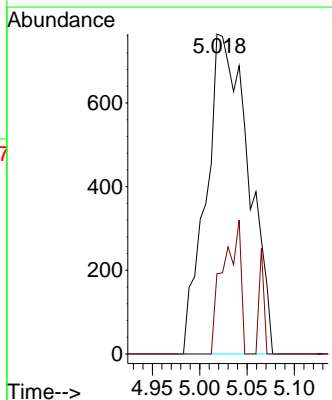
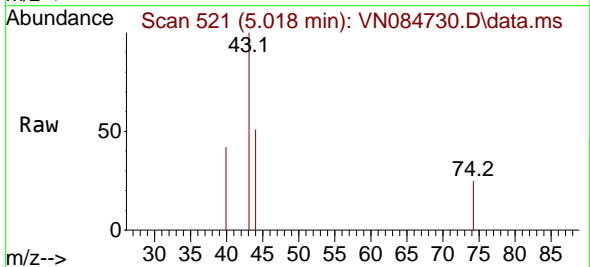
Instrument :
 MSVOA_N
 ClientSampleId :

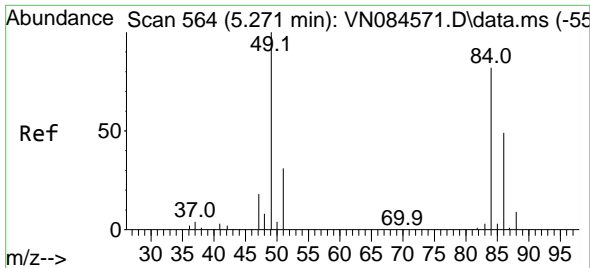
Tgt Ion: 76 Resp: 2118
 Ion Ratio Lower Upper
 76 100
 78 0.0 7.3 10.9#



#18
 Methyl Acetate
 Concen: Below Cal
 RT: 5.018 min Scan# 521
 Delta R.T. 0.000 min
 Lab File: VN084730.D
 Acq: 07 Nov 2024 18:46

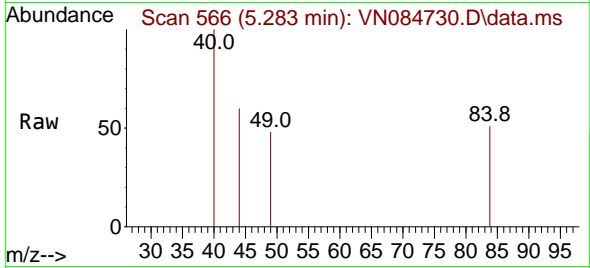
Tgt Ion: 43 Resp: 2374
 Ion Ratio Lower Upper
 43 100
 74 0.0 19.2 28.8#



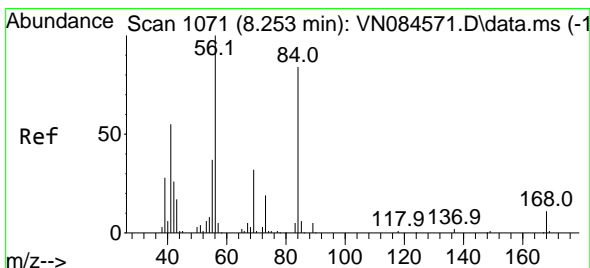
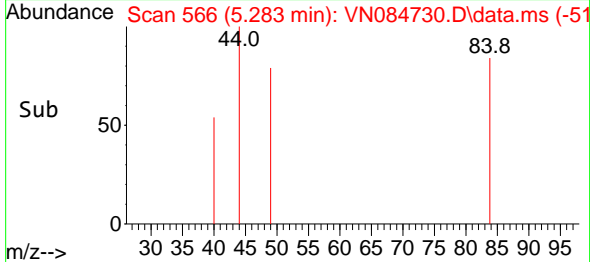
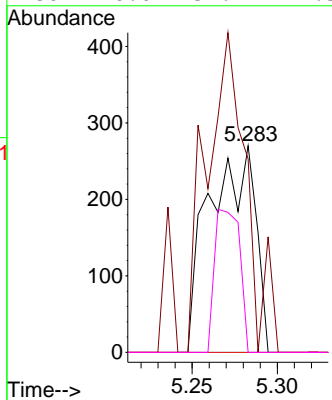


#20
 Methylene Chloride
 Concen: 0.239 ug/l
 RT: 5.283 min Scan# 50
 Delta R.T. 0.006 min
 Lab File: VN084730.D
 Acq: 07 Nov 2024 18:46

Instrument :
 MSVOA_N
 ClientSampleId :

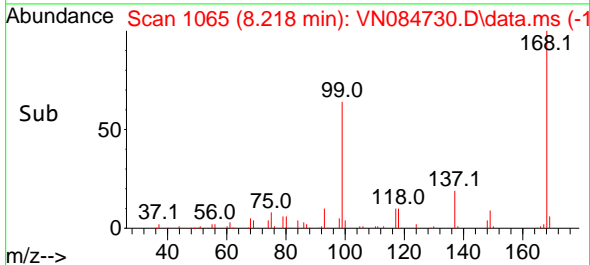
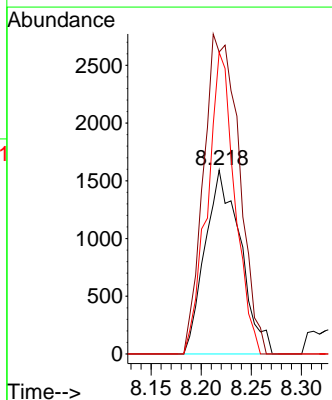
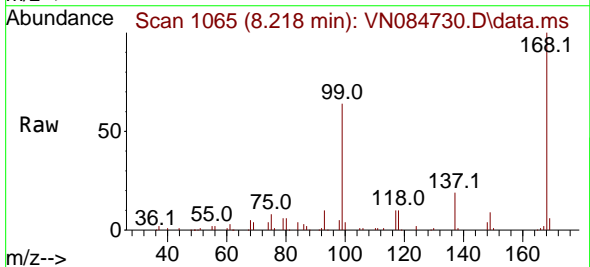


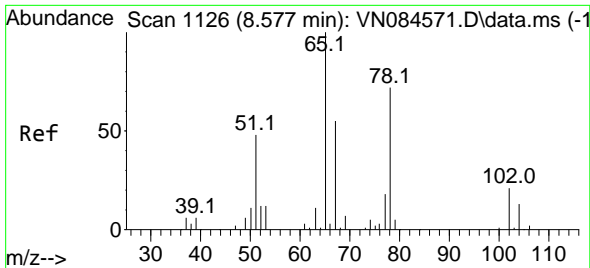
Tgt Ion	Resp	Lower	Upper
84	100		
49	93.7	107.2	160.8#
51	0.0	31.8	47.8#
86	0.0	52.9	79.3#



#31
 Cyclohexane
 Concen: 1.174 ug/l
 RT: 8.218 min Scan# 1065
 Delta R.T. -0.035 min
 Lab File: VN084730.D
 Acq: 07 Nov 2024 18:46

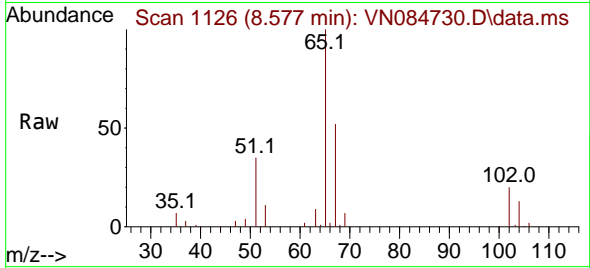
Tgt Ion	Resp	Lower	Upper
56	100		
69	164.3	23.8	35.6#
84	164.1	68.8	103.2#



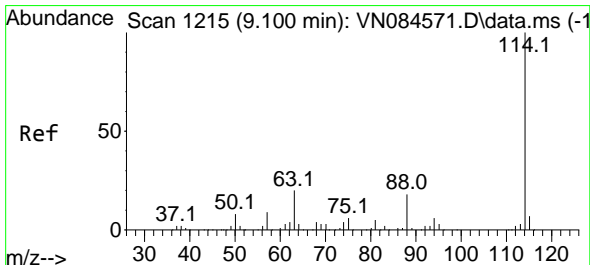
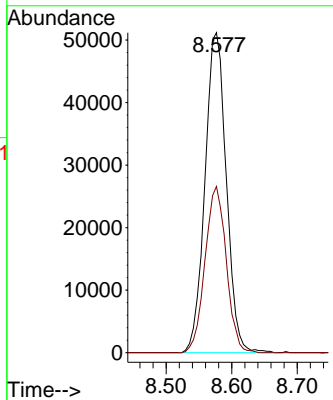
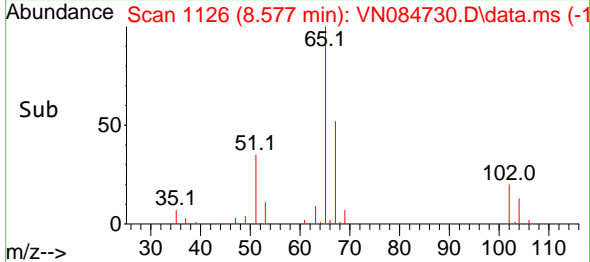


#33
 1,2-Dichloroethane-d4
 Concen: 48.019 ug/l
 RT: 8.577 min Scan# 1126
 Delta R.T. -0.000 min
 Lab File: VN084730.D
 Acq: 07 Nov 2024 18:46

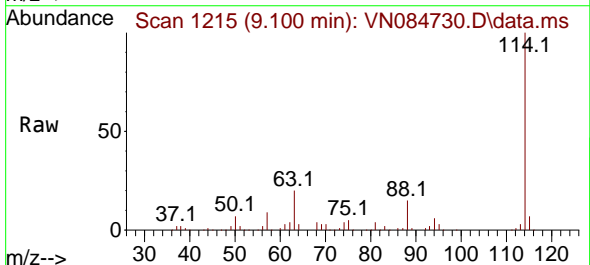
Instrument : MSVOA_N
 ClientSampleId :



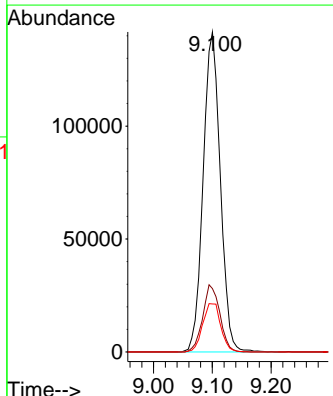
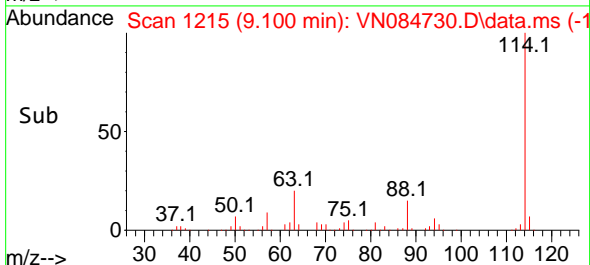
Tgt Ion: 65 Resp: 115796
 Ion Ratio Lower Upper
 65 100
 67 51.7 0.0 102.0

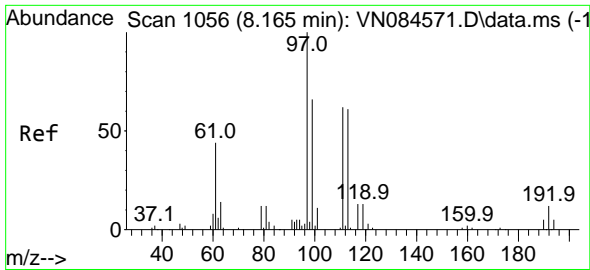


#34
 1,4-Difluorobenzene
 Concen: 50.000 ug/l
 RT: 9.100 min Scan# 1215
 Delta R.T. 0.000 min
 Lab File: VN084730.D
 Acq: 07 Nov 2024 18:46



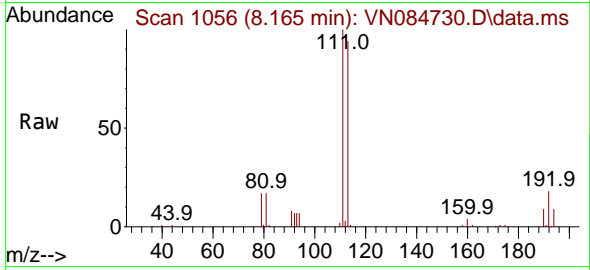
Tgt Ion: 114 Resp: 286510
 Ion Ratio Lower Upper
 114 100
 63 19.8 0.0 43.8
 88 15.0 0.0 31.6



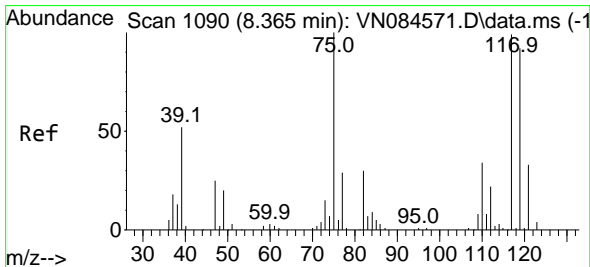
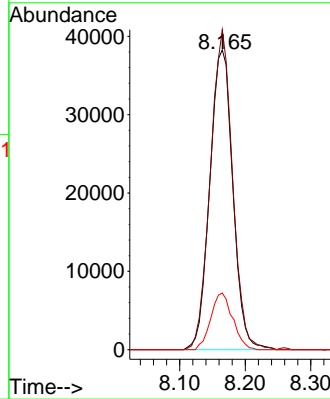
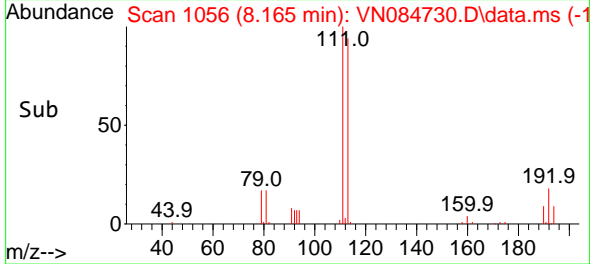


#35
 Dibromofluoromethane
 Concen: 48.238 ug/l
 RT: 8.165 min Scan# 1091
 Delta R.T. 0.000 min
 Lab File: VN084730.D
 Acq: 07 Nov 2024 18:46

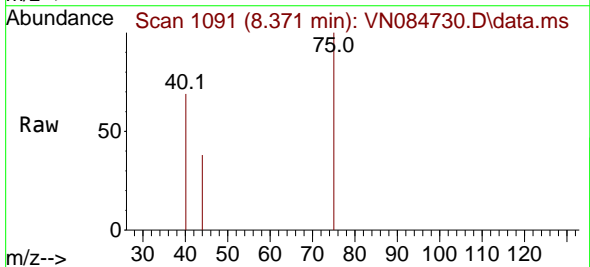
Instrument : MSVOA_N
 ClientSampleId :



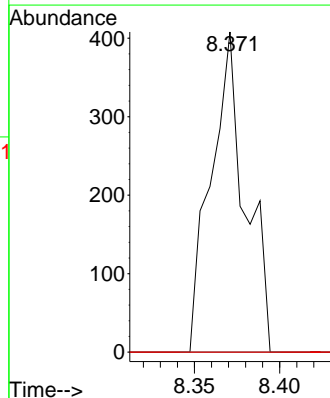
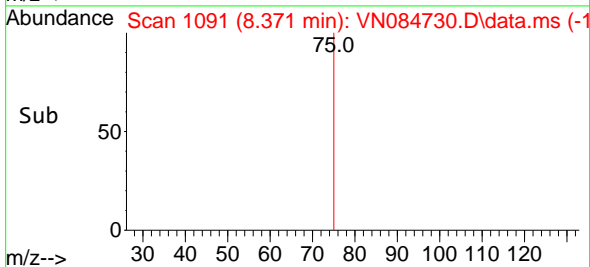
Tgt Ion:113 Resp: 93550
 Ion Ratio Lower Upper
 113 100
 111 102.8 83.3 124.9
 192 17.9 13.5 20.3

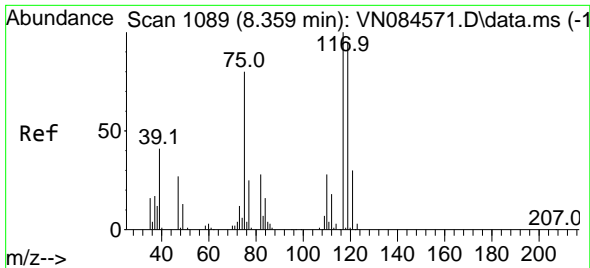


#36
 1,1-Dichloropropene
 Concen: 0.213 ug/l
 RT: 8.371 min Scan# 1091
 Delta R.T. 0.000 min
 Lab File: VN084730.D
 Acq: 07 Nov 2024 18:46



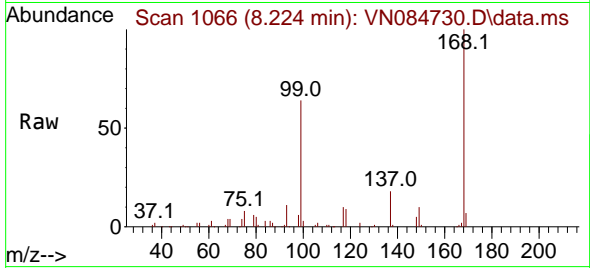
Tgt Ion: 75 Resp: 574
 Ion Ratio Lower Upper
 75 100
 110 0.0 16.9 50.7#
 77 0.0 24.7 37.1#



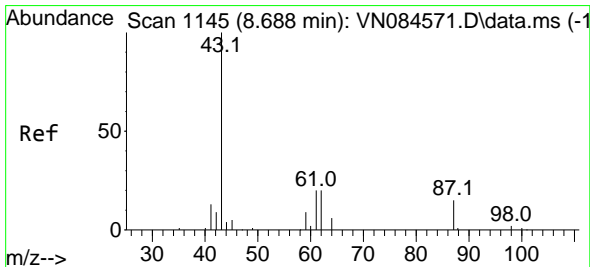
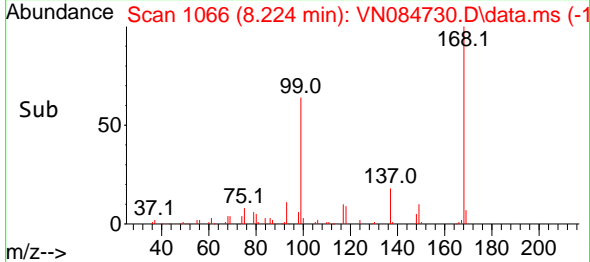
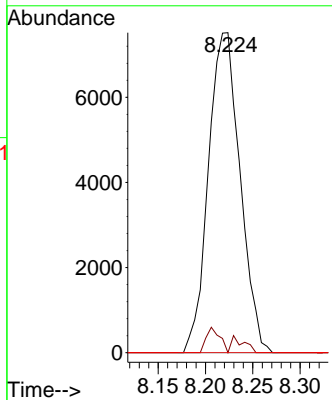


#38
 Carbon Tetrachloride
 Concen: 5.829 ug/l
 RT: 8.224 min Scan# 1089
 Delta R.T. -0.135 min
 Lab File: VN084730.D
 Acq: 07 Nov 2024 18:46

Instrument : MSVOA_N
 ClientSampleId :

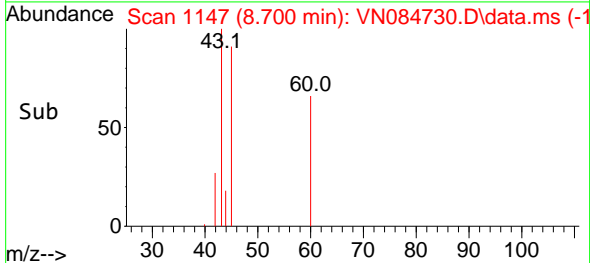
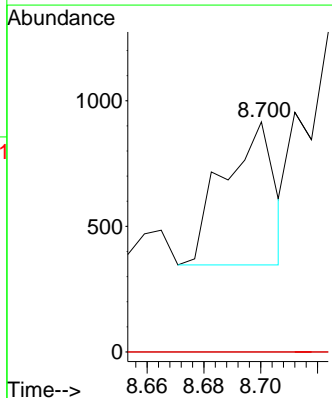
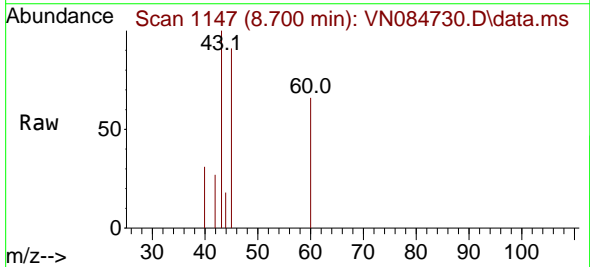


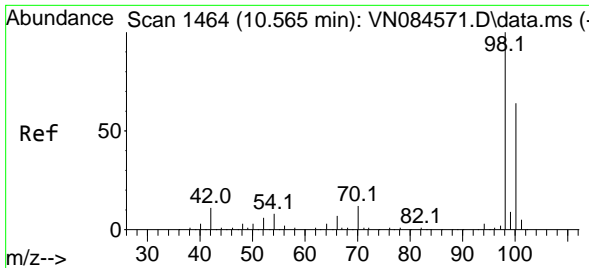
Tgt Ion:117 Resp: 17523
 Ion Ratio Lower Upper
 117 100
 119 0.0 78.7 118.1#
 121 0.0 24.4 36.6#



#43
 Isopropyl Acetate
 Concen: Below Cal
 RT: 8.700 min Scan# 1147
 Delta R.T. 0.012 min
 Lab File: VN084730.D
 Acq: 07 Nov 2024 18:46

Tgt Ion: 43 Resp: 699
 Ion Ratio Lower Upper
 43 100
 61 0.0 20.4 30.6#
 87 0.0 10.3 15.5#

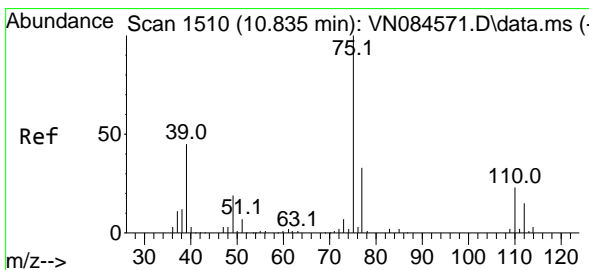
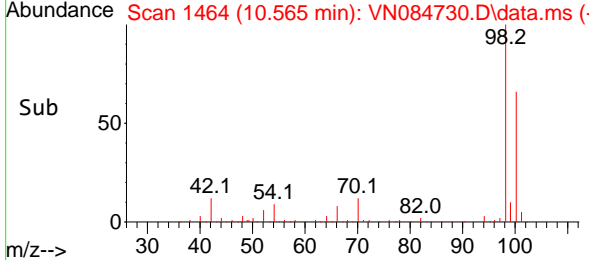
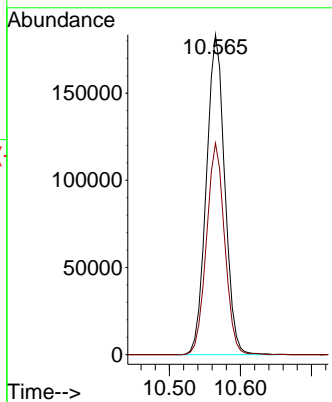
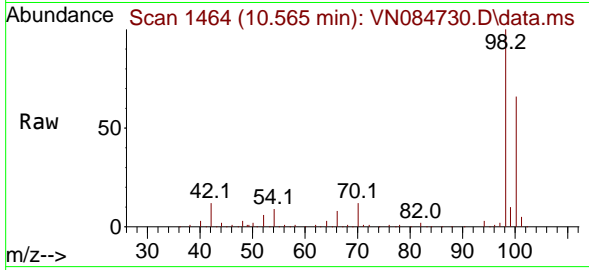




#50
 Toluene-d8
 Concen: 46.192 ug/l
 RT: 10.565 min Scan# 14
 Delta R.T. -0.000 min
 Lab File: VN084730.D
 Acq: 07 Nov 2024 18:46

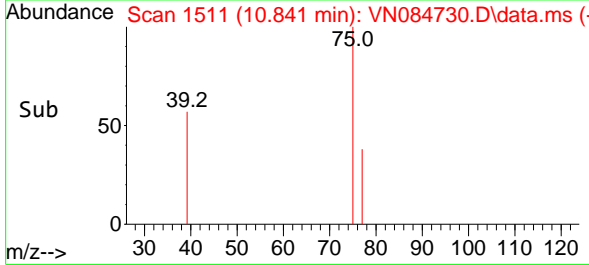
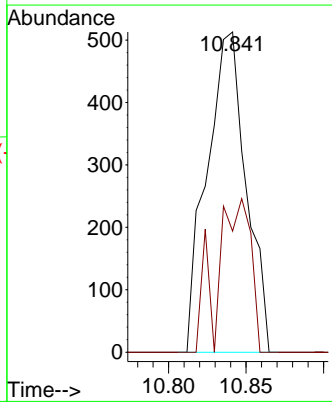
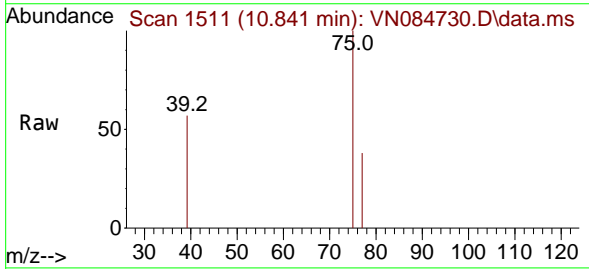
Instrument : MSVOA_N
 ClientSampleId :

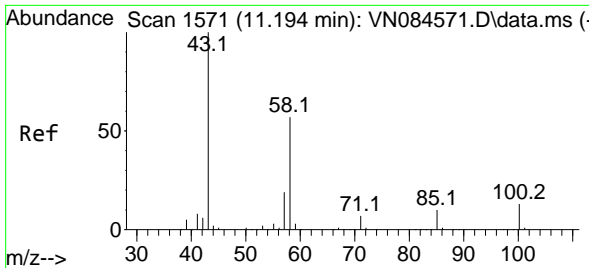
Tgt Ion: 98 Resp: 329989
 Ion Ratio Lower Upper
 98 100
 100 65.4 52.7 79.1



#53
 t-1,3-Dichloropropene
 Concen: 0.289 ug/l
 RT: 10.841 min Scan# 1511
 Delta R.T. 0.006 min
 Lab File: VN084730.D
 Acq: 07 Nov 2024 18:46

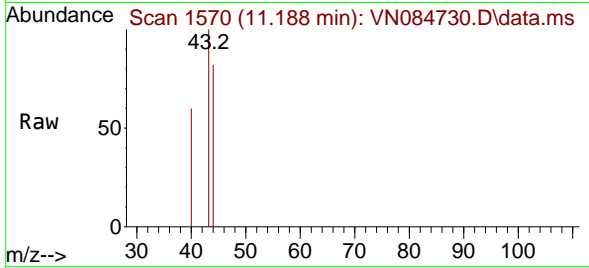
Tgt Ion: 75 Resp: 903
 Ion Ratio Lower Upper
 75 100
 77 37.8 25.4 38.0



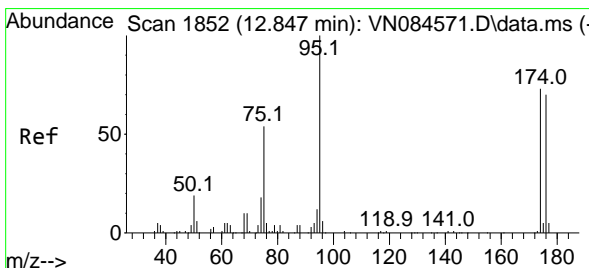
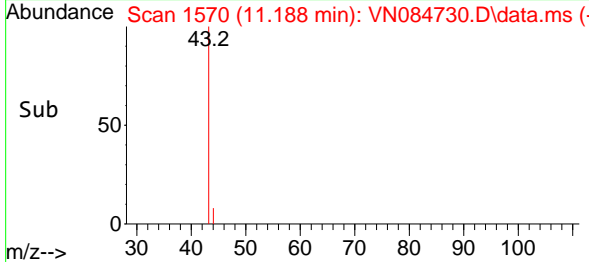
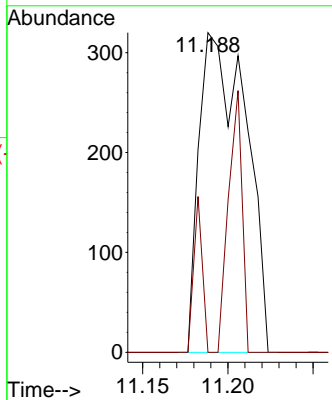


#59
 2-Hexanone
 Concen: 0.360 ug/l
 RT: 11.188 min Scan# 11
 Delta R.T. -0.006 min
 Lab File: VN084730.D
 Acq: 07 Nov 2024 18:46

Instrument :
 MSVOA_N
 ClientSampleId :

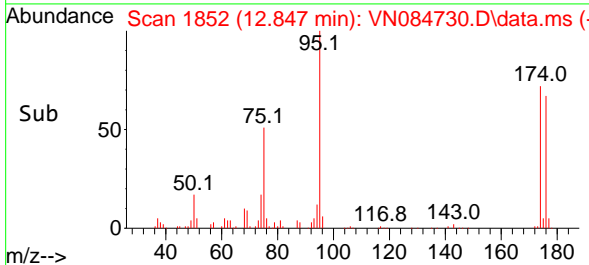
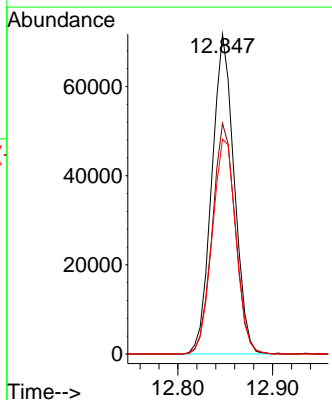
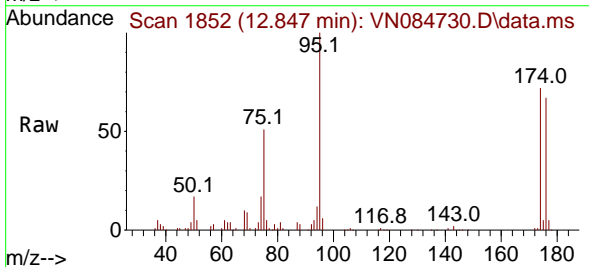


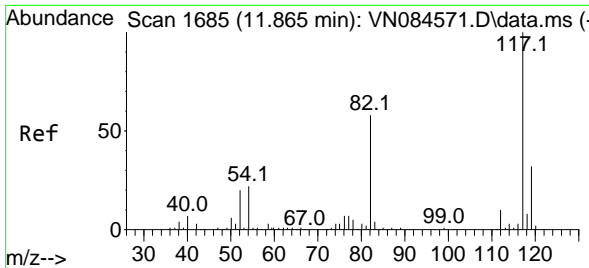
Tgt Ion: 43 Resp: 610
 Ion Ratio Lower Upper
 43 100
 58 9.0 27.3 81.8#



#62
 4-Bromofluorobenzene
 Concen: 43.969 ug/l
 RT: 12.847 min Scan# 1852
 Delta R.T. 0.000 min
 Lab File: VN084730.D
 Acq: 07 Nov 2024 18:46

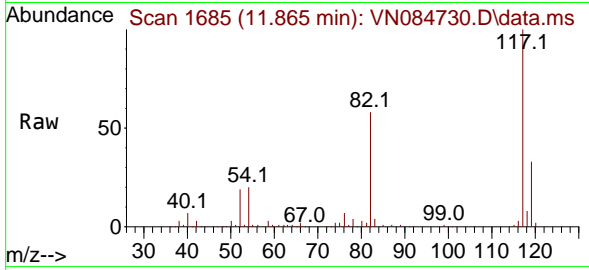
Tgt Ion: 95 Resp: 117393
 Ion Ratio Lower Upper
 95 100
 174 74.1 0.0 145.2
 176 71.4 0.0 140.0





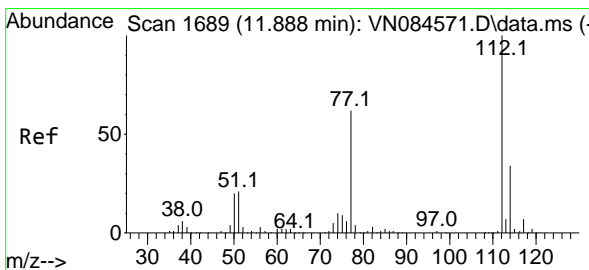
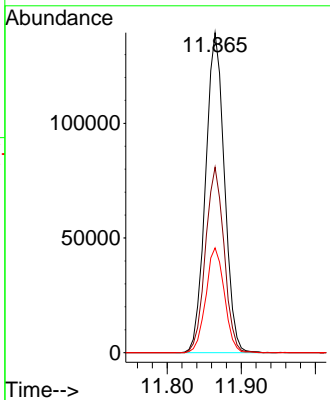
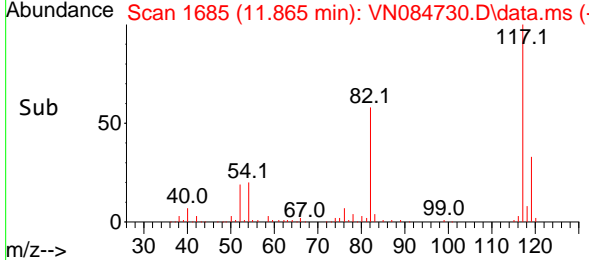
#63
 Chlorobenzene-d5
 Concen: 50.000 ug/l
 RT: 11.865 min Scan# 1685
 Delta R.T. -0.000 min
 Lab File: VN084730.D
 Acq: 07 Nov 2024 18:46

Instrument : MSVOA_N
 ClientSampleId :

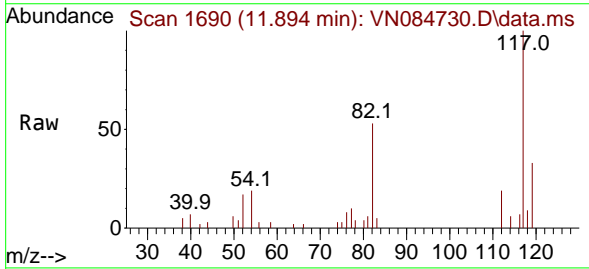


Tgt Ion:117 Resp: 246182

Ion	Ratio	Lower	Upper
117	100		
82	57.9	47.2	70.8
119	32.7	25.4	38.0

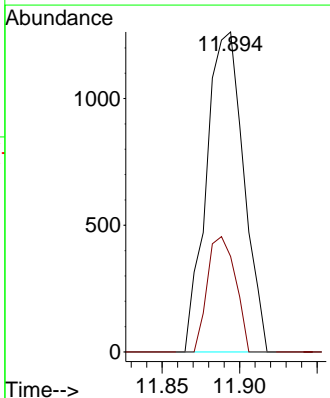
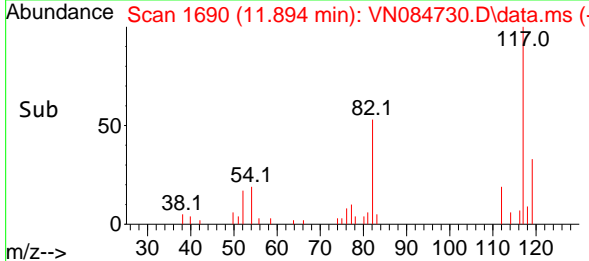


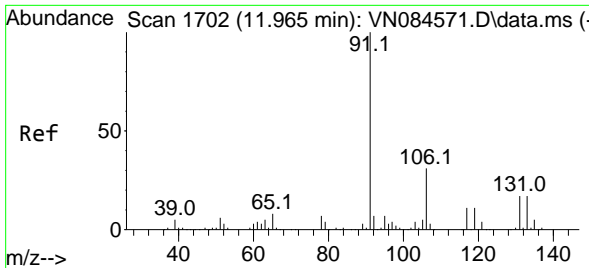
#65
 Chlorobenzene
 Concen: 0.383 ug/l
 RT: 11.894 min Scan# 1690
 Delta R.T. 0.006 min
 Lab File: VN084730.D
 Acq: 07 Nov 2024 18:46



Tgt Ion:112 Resp: 2110

Ion	Ratio	Lower	Upper
112	100		
114	29.8	27.0	40.6

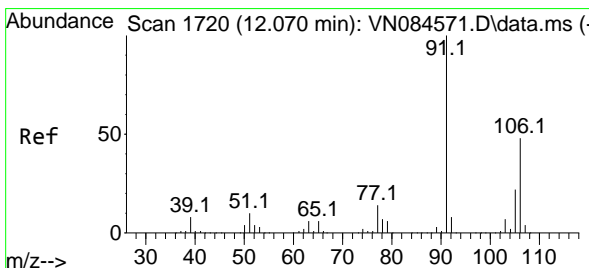
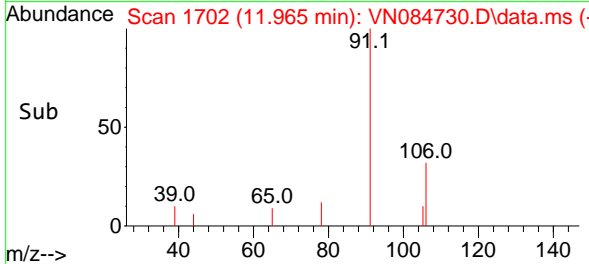
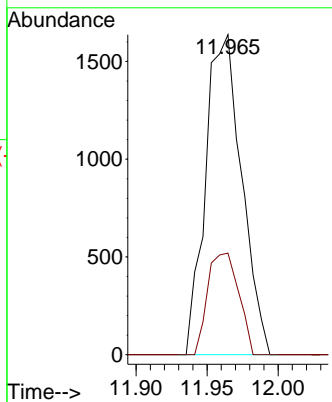
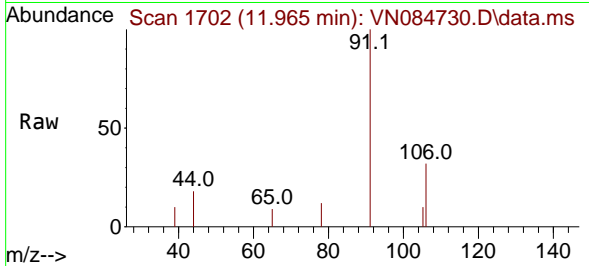




#67
 Ethyl Benzene
 Concen: 0.315 ug/l
 RT: 11.965 min Scan# 11
 Delta R.T. 0.006 min
 Lab File: VN084730.D
 Acq: 07 Nov 2024 18:46

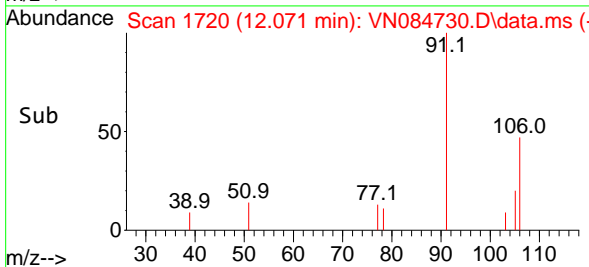
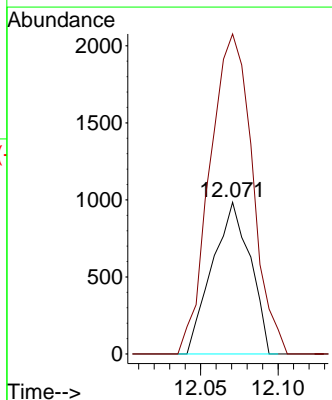
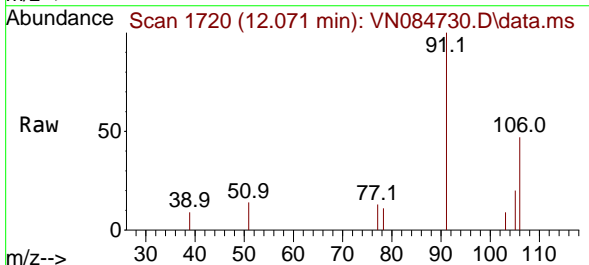
Instrument :
 MSVOA_N
 ClientSampleId :

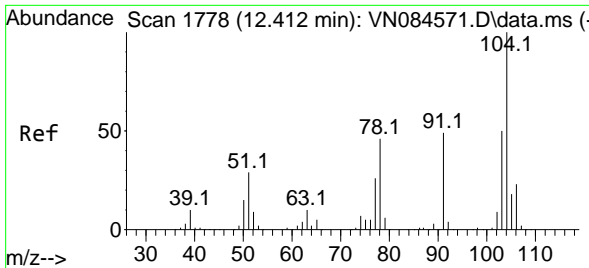
Tgt Ion: 91 Resp: 2894
 Ion Ratio Lower Upper
 91 100
 106 31.8 24.5 36.7



#68
 m/p-Xylenes
 Concen: 0.483 ug/l
 RT: 12.071 min Scan# 1720
 Delta R.T. 0.000 min
 Lab File: VN084730.D
 Acq: 07 Nov 2024 18:46

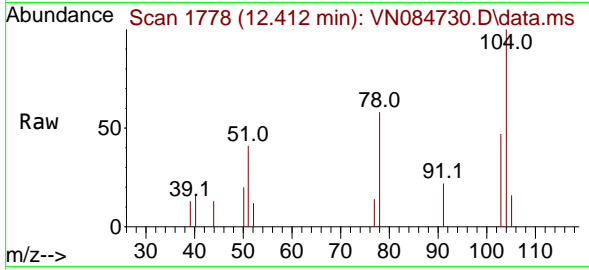
Tgt Ion: 106 Resp: 1681
 Ion Ratio Lower Upper
 106 100
 91 235.5 167.1 250.7





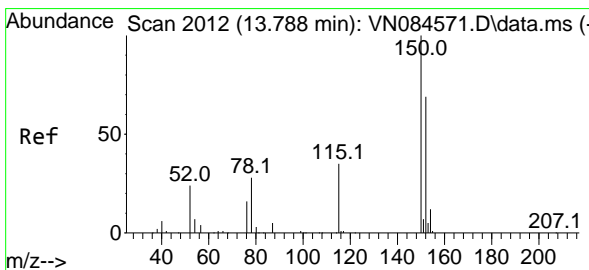
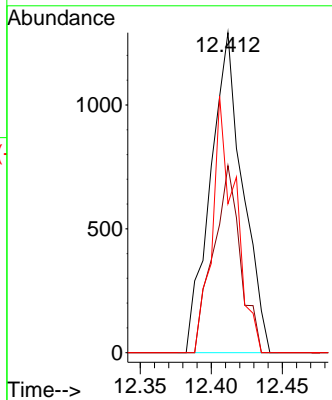
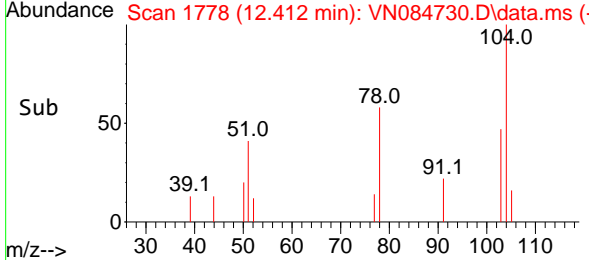
#70
 Styrene
 Concen: 0.360 ug/l
 RT: 12.412 min Scan# 1778
 Delta R.T. -0.000 min
 Lab File: VN084730.D
 Acq: 07 Nov 2024 18:46

Instrument : MSVOA_N
 ClientSampleId :

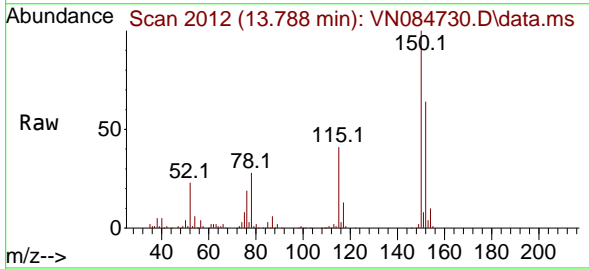


Tgt Ion:104 Resp: 2043

Ion	Ratio	Lower	Upper
104	100		
78	48.8	42.7	64.1
103	57.3	43.6	65.4

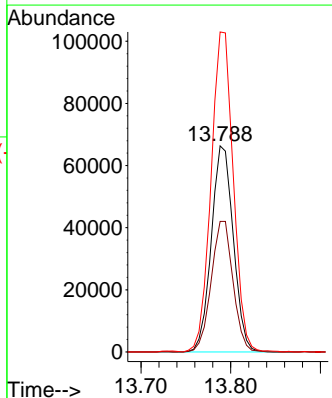
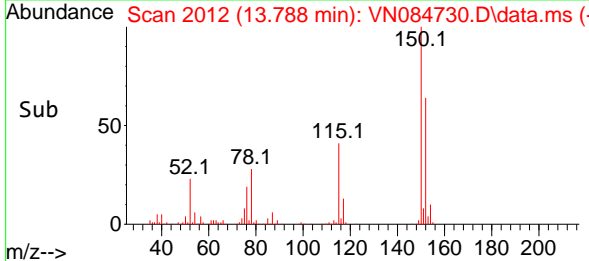


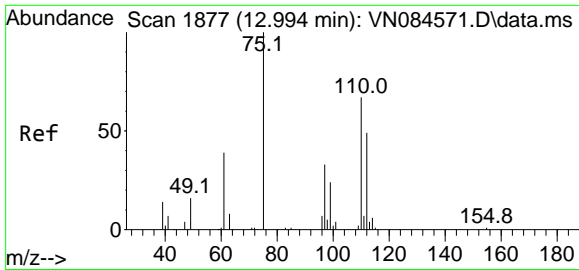
#72
 1,4-Dichlorobenzene-d4
 Concen: 50.000 ug/l
 RT: 13.788 min Scan# 2012
 Delta R.T. 0.000 min
 Lab File: VN084730.D
 Acq: 07 Nov 2024 18:46



Tgt Ion:152 Resp: 113078

Ion	Ratio	Lower	Upper
152	100		
115	62.8	31.3	93.9
150	156.7	0.0	349.8

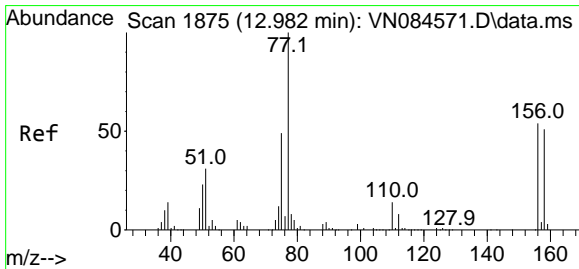
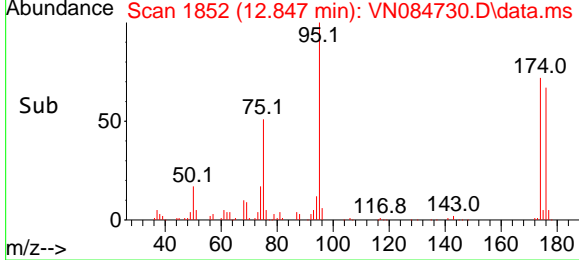
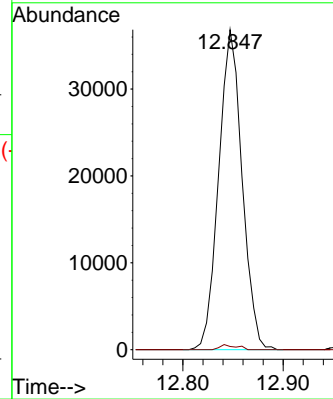
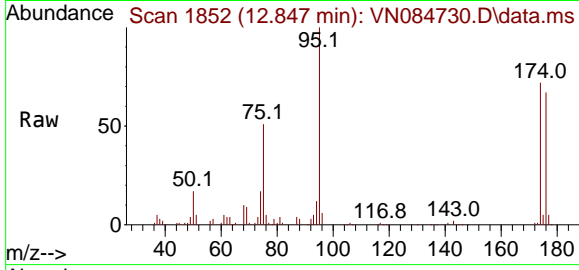




#76
 1,2,3-Trichloropropane
 Concen: 26.378 ug/l
 RT: 12.847 min Scan# 1876
 Delta R.T. -0.141 min
 Lab File: VN084730.D
 Acq: 07 Nov 2024 18:46

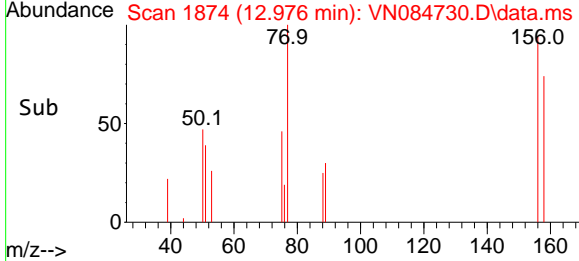
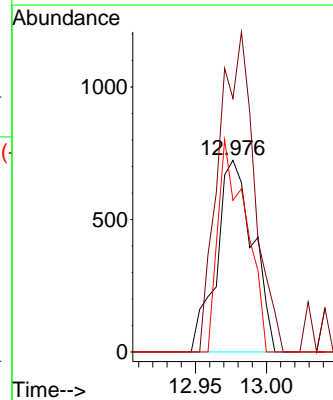
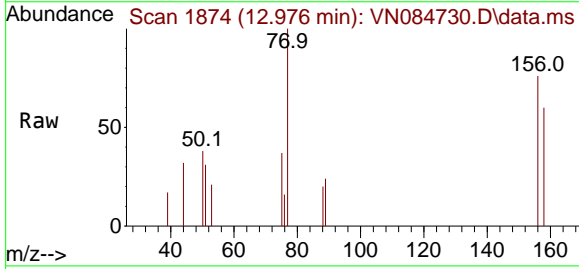
Instrument :
 MSVOA_N
 ClientSampleId :

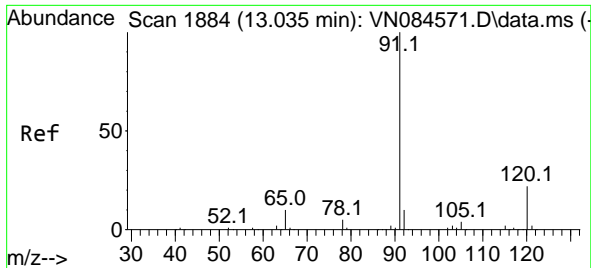
Tgt Ion: 75 Resp: 59624
 Ion Ratio Lower Upper
 75 100
 77 1.1 96.9 290.7#



#77
 Bromobenzene
 Concen: 0.605 ug/l
 RT: 12.976 min Scan# 1874
 Delta R.T. -0.006 min
 Lab File: VN084730.D
 Acq: 07 Nov 2024 18:46

Tgt Ion: 156 Resp: 1289
 Ion Ratio Lower Upper
 156 100
 77 163.2 115.1 345.3
 158 85.6 48.9 146.8

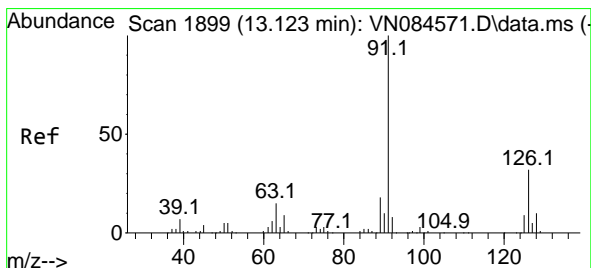
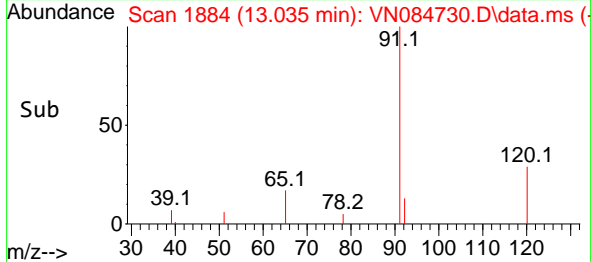
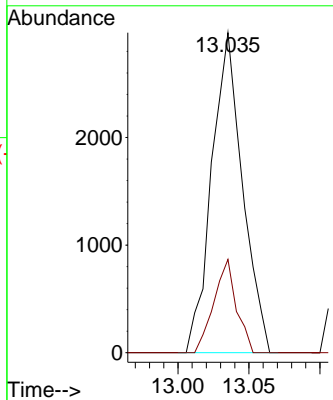
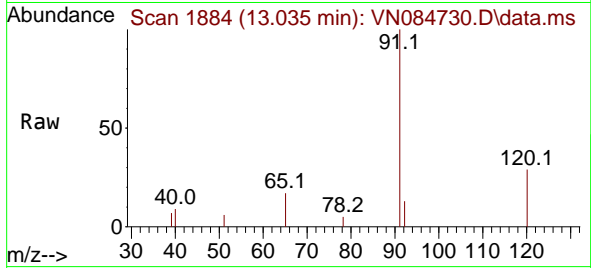




#78
 n-propylbenzene
 Concen: 0.483 ug/l
 RT: 13.035 min Scan# 1884
 Delta R.T. 0.000 min
 Lab File: VN084730.D
 Acq: 07 Nov 2024 18:46

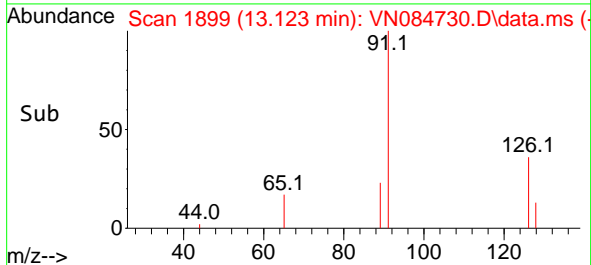
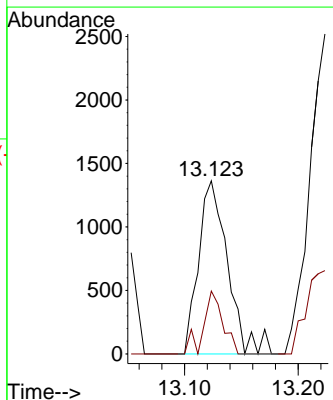
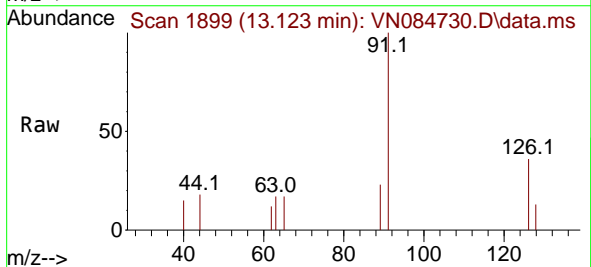
Instrument :
 MSVOA_N
 ClientSampleId :

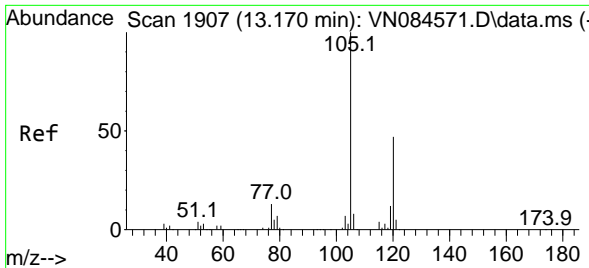
Tgt Ion: 91 Resp: 4489
 Ion Ratio Lower Upper
 91 100
 120 21.3 10.8 32.4



#79
 2-Chlorotoluene
 Concen: 0.399 ug/l
 RT: 13.123 min Scan# 1899
 Delta R.T. 0.000 min
 Lab File: VN084730.D
 Acq: 07 Nov 2024 18:46

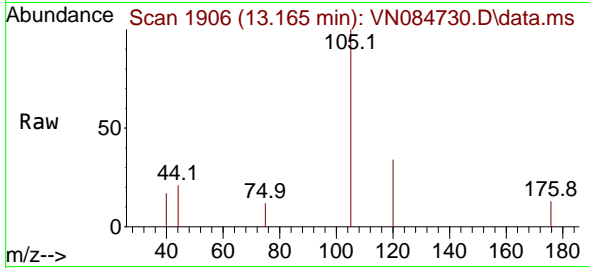
Tgt Ion: 91 Resp: 2420
 Ion Ratio Lower Upper
 91 100
 126 24.1 15.7 47.1



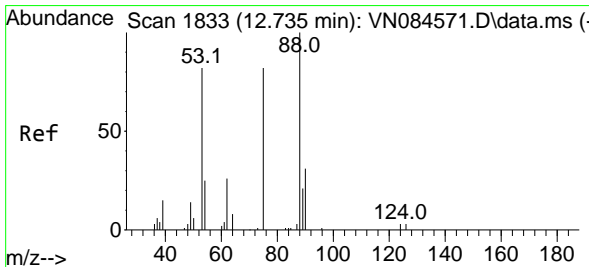
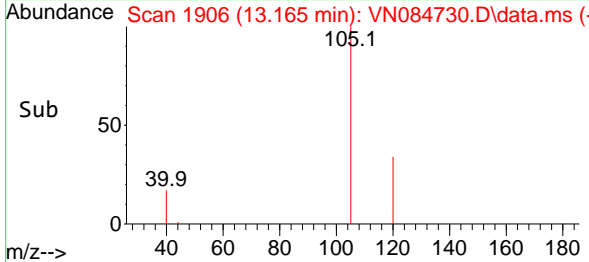
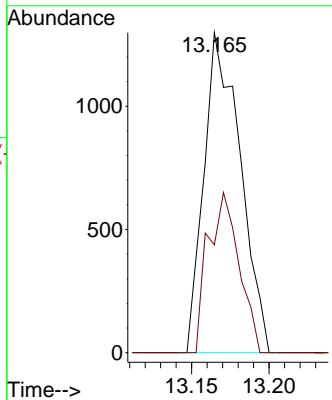


#80
 1,3,5-Trimethylbenzene
 Concen: 0.322 ug/l
 RT: 13.165 min Scan# 1906
 Delta R.T. -0.006 min
 Lab File: VN084730.D
 Acq: 07 Nov 2024 18:46

Instrument : MSVOA_N
 ClientSampleId :

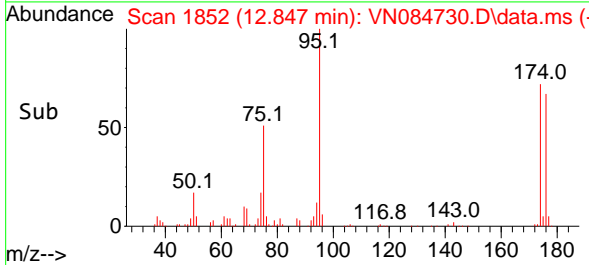
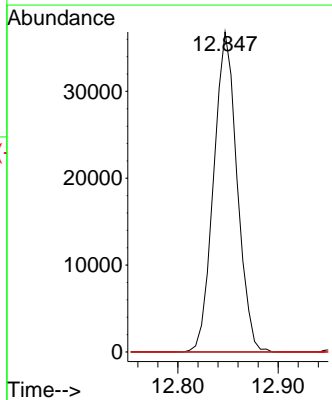
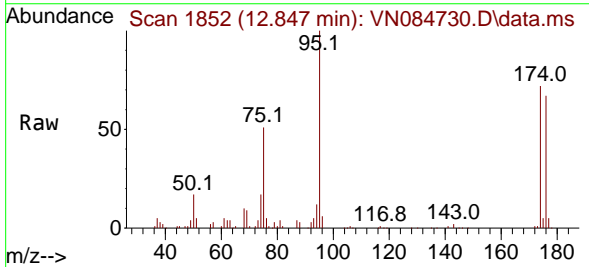


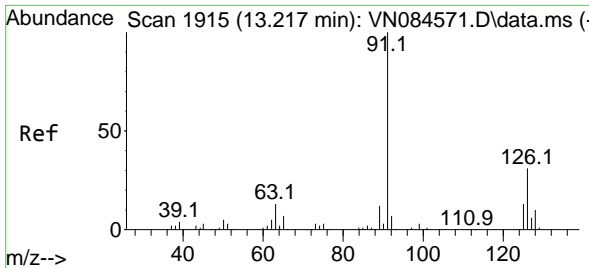
Tgt Ion:105 Resp: 2113
 Ion Ratio Lower Upper
 105 100
 120 42.7 23.7 71.1



#81
 trans-1,4-Dichloro-2-butene
 Concen: 62.579 ug/l
 RT: 12.847 min Scan# 1852
 Delta R.T. 0.112 min
 Lab File: VN084730.D
 Acq: 07 Nov 2024 18:46

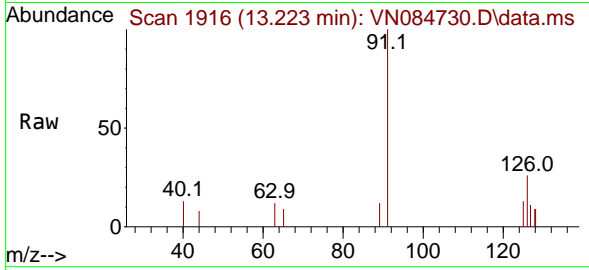
Tgt Ion: 75 Resp: 59624
 Ion Ratio Lower Upper
 75 100
 53 0.0 78.0 117.0#
 89 0.0 35.5 53.3#



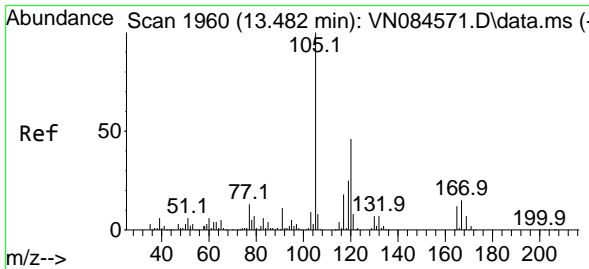
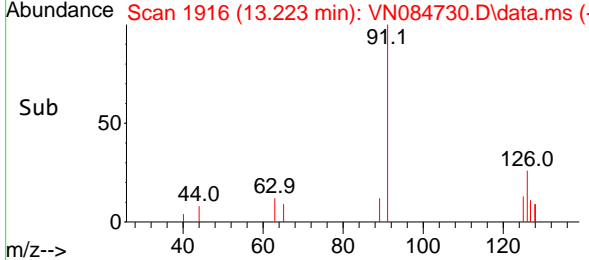
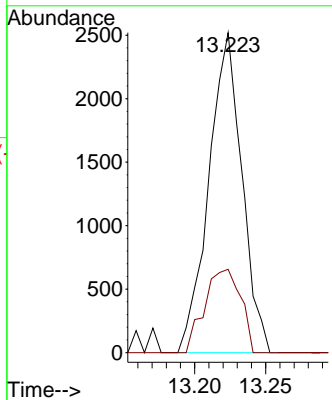


#82
 4-Chlorotoluene
 Concen: 0.639 ug/l
 RT: 13.223 min Scan# 1915
 Delta R.T. 0.006 min
 Lab File: VN084730.D
 Acq: 07 Nov 2024 18:46

Instrument : MSVOA_N
 ClientSampleId :

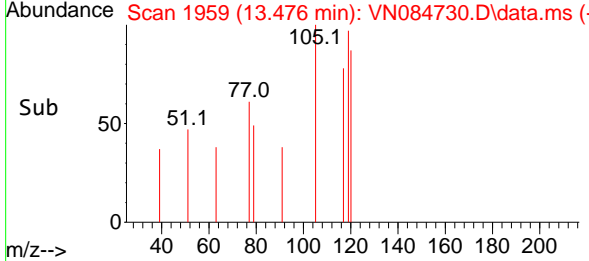
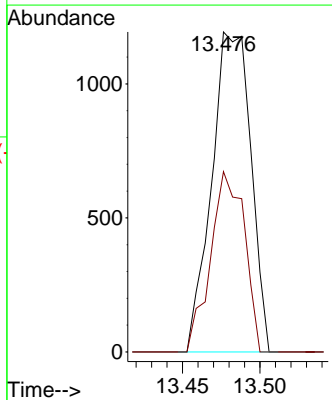
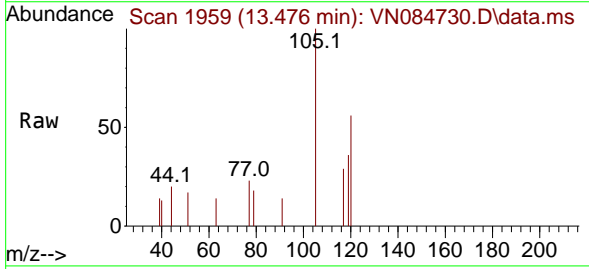


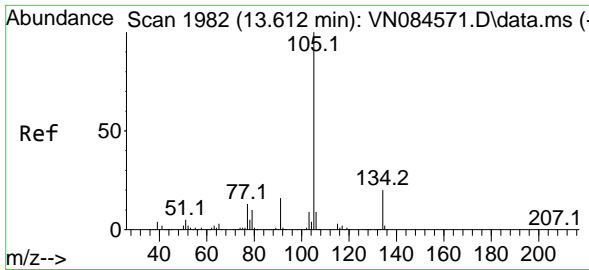
Tgt Ion: 91 Resp: 4078
 Ion Ratio Lower Upper
 91 100
 126 28.4 15.7 47.1



#84
 1,2,4-Trimethylbenzene
 Concen: 0.309 ug/l
 RT: 13.476 min Scan# 1959
 Delta R.T. -0.006 min
 Lab File: VN084730.D
 Acq: 07 Nov 2024 18:46

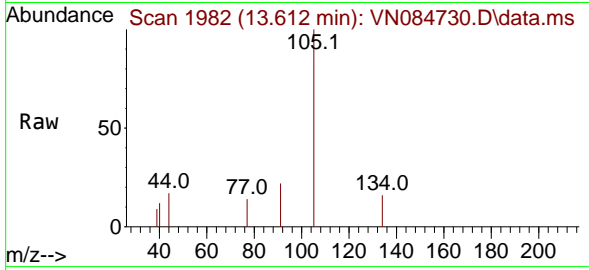
Tgt Ion: 105 Resp: 2094
 Ion Ratio Lower Upper
 105 100
 120 48.7 22.3 66.8



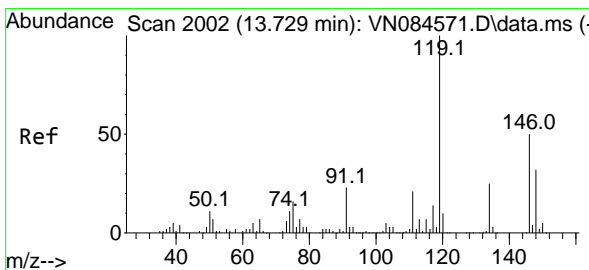
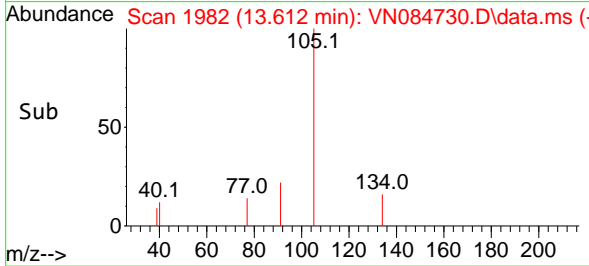
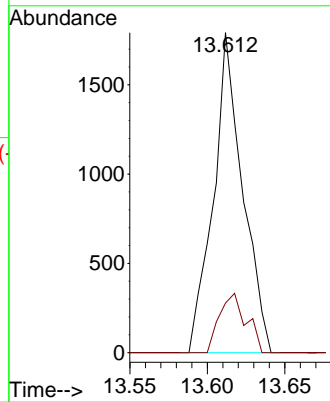


#85
 sec-Butylbenzene
 Concen: 0.306 ug/l
 RT: 13.612 min Scan# 1982
 Delta R.T. -0.006 min
 Lab File: VN084730.D
 Acq: 07 Nov 2024 18:46

Instrument : MSVOA_N
 ClientSampleId :

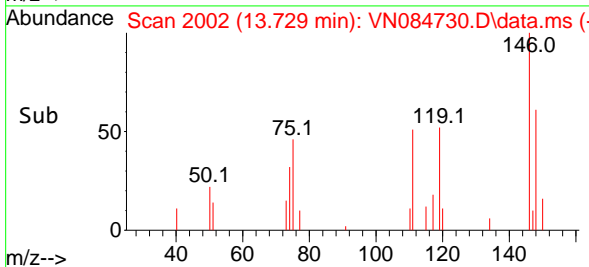
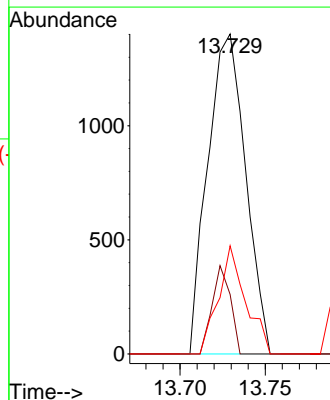
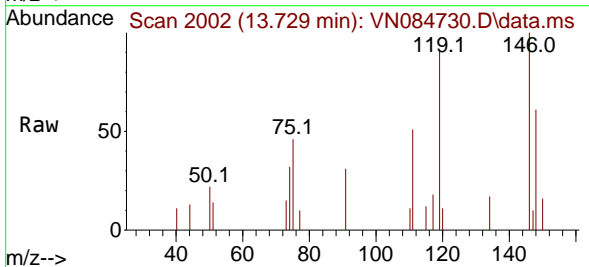


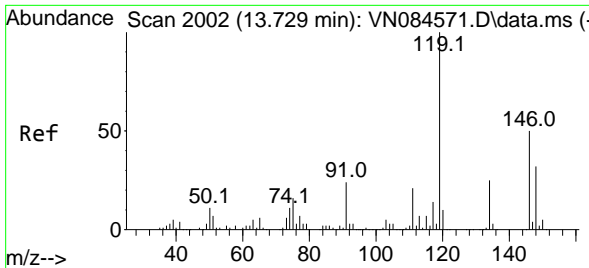
Tgt Ion:105 Resp: 2347
 Ion Ratio Lower Upper
 105 100
 134 16.9 9.8 29.4



#86
 p-Isopropyltoluene
 Concen: 0.344 ug/l
 RT: 13.729 min Scan# 2002
 Delta R.T. 0.000 min
 Lab File: VN084730.D
 Acq: 07 Nov 2024 18:46

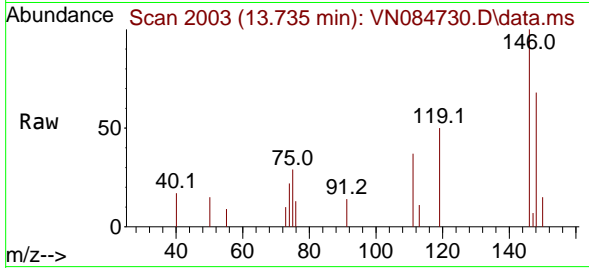
Tgt Ion:119 Resp: 2164
 Ion Ratio Lower Upper
 119 100
 134 13.3 12.6 37.8
 91 24.4 12.4 37.2



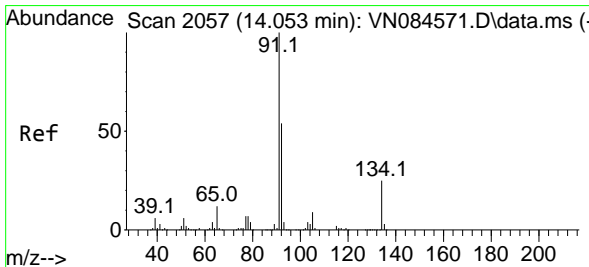
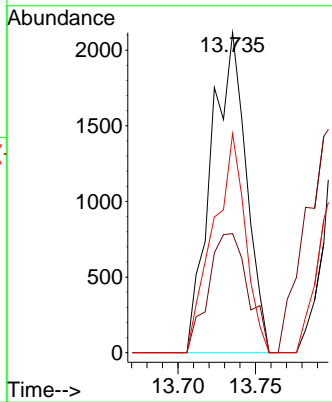
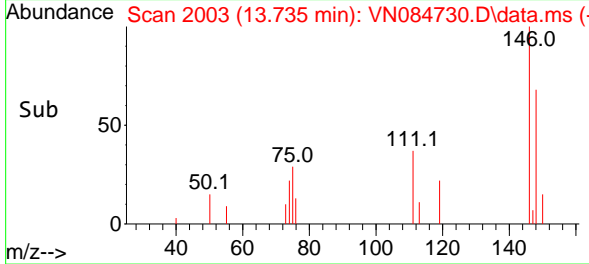


#87
 1,3-Dichlorobenzene
 Concen: 0.802 ug/l
 RT: 13.735 min Scan# 2003
 Delta R.T. 0.006 min
 Lab File: VN084730.D
 Acq: 07 Nov 2024 18:46

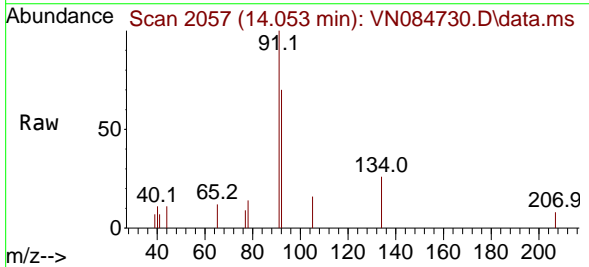
Instrument : MSVOA_N
 ClientSampleId :



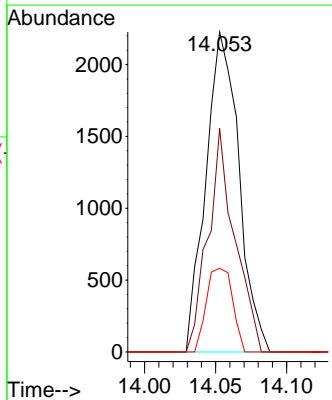
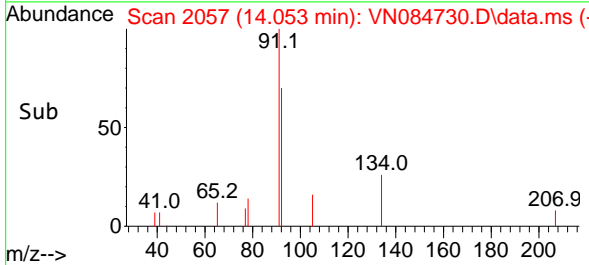
Tgt Ion:146 Resp: 3333
 Ion Ratio Lower Upper
 146 100
 111 41.9 21.8 65.3
 148 62.4 31.9 95.7

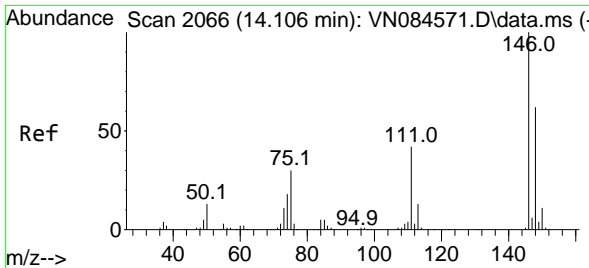


#89
 n-Butylbenzene
 Concen: 0.612 ug/l
 RT: 14.053 min Scan# 2057
 Delta R.T. -0.000 min
 Lab File: VN084730.D
 Acq: 07 Nov 2024 18:46



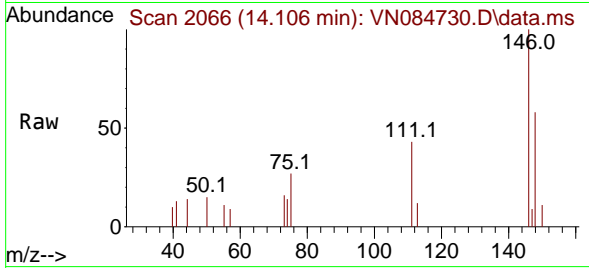
Tgt Ion: 91 Resp: 3607
 Ion Ratio Lower Upper
 91 100
 92 56.8 26.6 79.7
 134 20.7 12.3 36.9





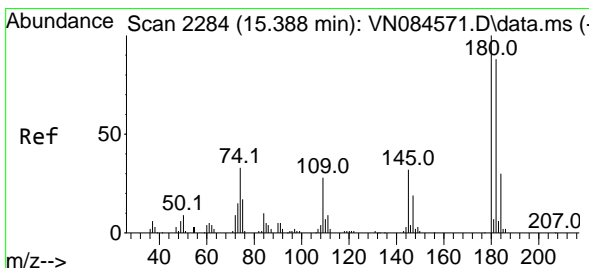
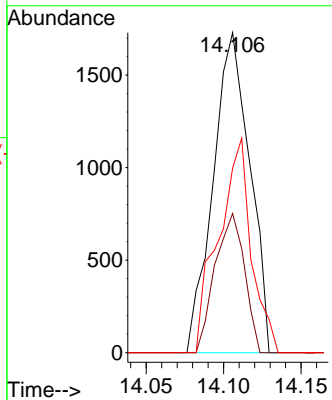
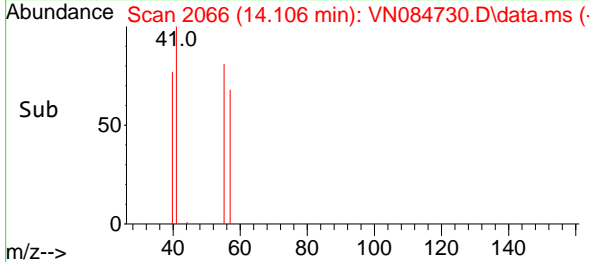
#91
 1,2-Dichlorobenzene
 Concen: 0.712 ug/l
 RT: 14.106 min Scan# 2066
 Delta R.T. 0.000 min
 Lab File: VN084730.D
 Acq: 07 Nov 2024 18:46

Instrument : MSVOA_N
 ClientSampleId :

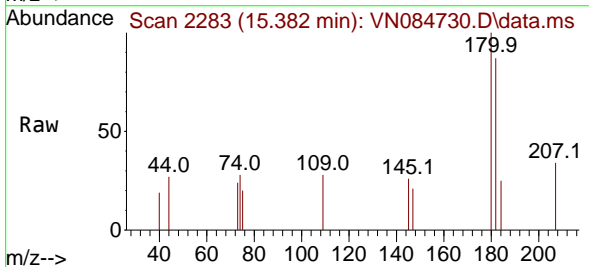


Tgt Ion:146 Resp: 2843

Ion	Ratio	Lower	Upper
146	100		
111	34.8	22.0	66.0
148	60.0	32.1	96.3

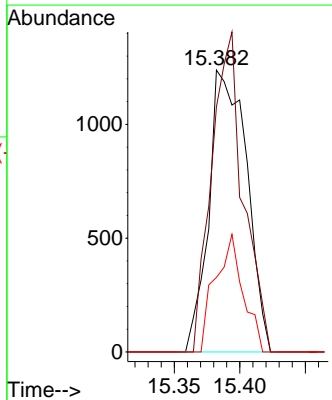
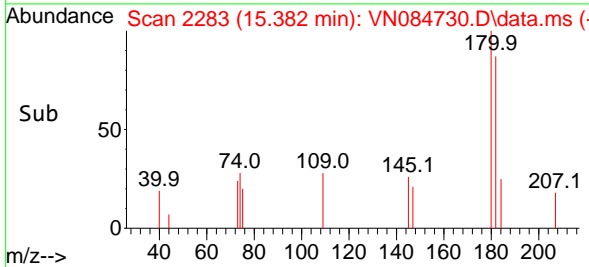


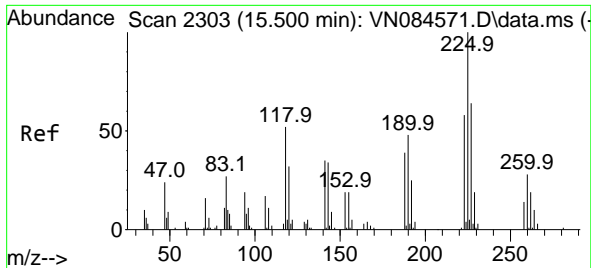
#93
 1,2,4-Trichlorobenzene
 Concen: 1.139 ug/l
 RT: 15.382 min Scan# 2283
 Delta R.T. -0.006 min
 Lab File: VN084730.D
 Acq: 07 Nov 2024 18:46



Tgt Ion:180 Resp: 2490

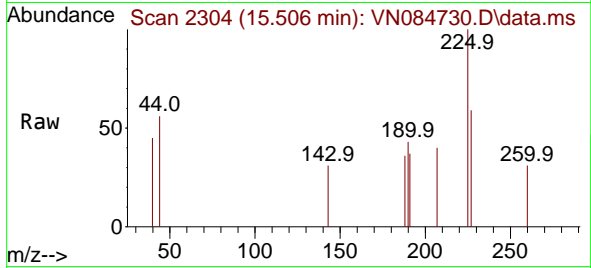
Ion	Ratio	Lower	Upper
180	100		
182	95.1	47.0	141.0
145	30.6	16.4	49.4





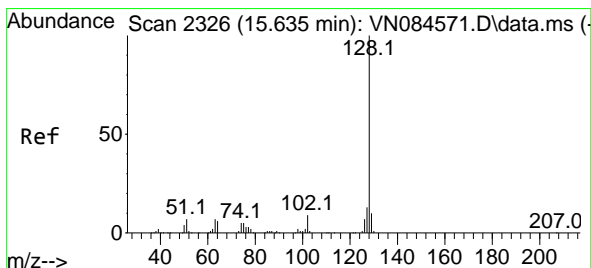
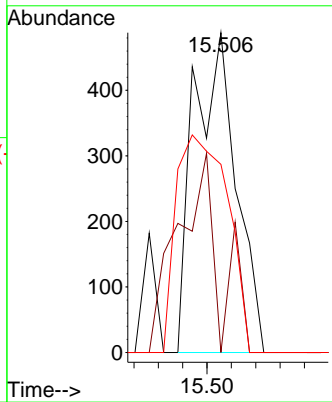
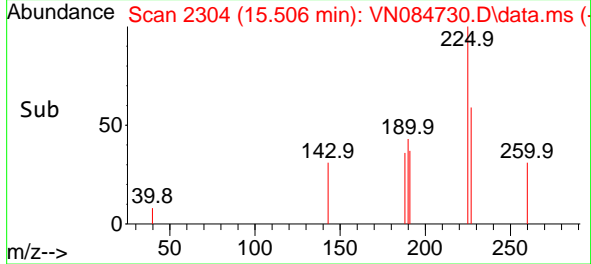
#94
 Hexachlorobutadiene
 Concen: 0.613 ug/l
 RT: 15.506 min Scan# 21
 Delta R.T. 0.006 min
 Lab File: VN084730.D
 Acq: 07 Nov 2024 18:46

Instrument :
 MSVOA_N
 ClientSampleId :

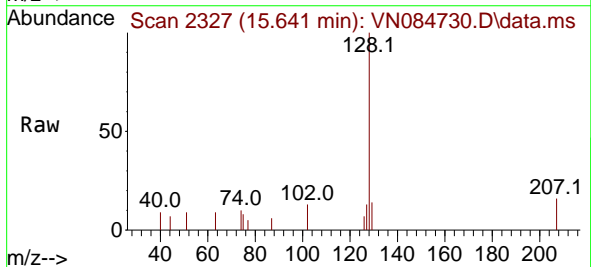


Tgt Ion: 225 Resp: 589

Ion	Ratio	Lower	Upper
225	100		
223	62.1	32.4	97.2
227	83.2	32.4	97.0

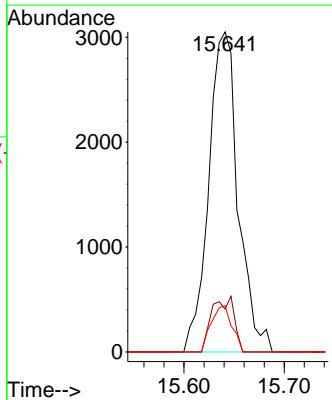
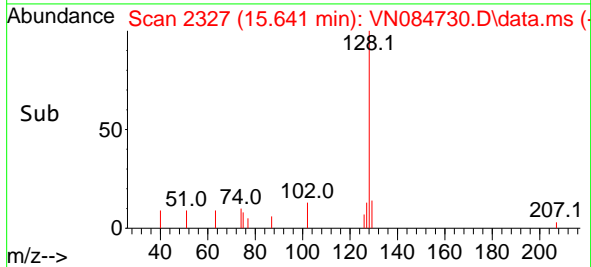


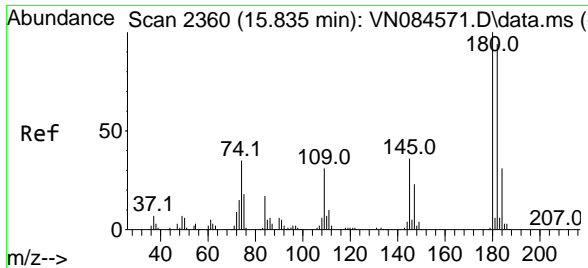
#95
 Naphthalene
 Concen: 0.952 ug/l
 RT: 15.641 min Scan# 2327
 Delta R.T. 0.006 min
 Lab File: VN084730.D
 Acq: 07 Nov 2024 18:46



Tgt Ion: 128 Resp: 6228

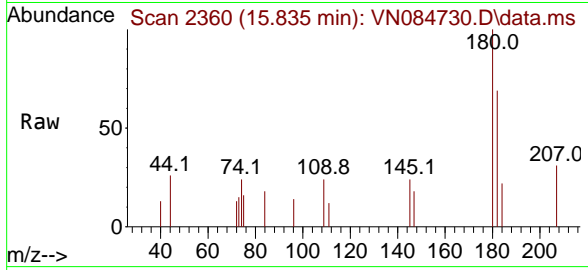
Ion	Ratio	Lower	Upper
128	100		
127	13.0	10.5	15.7
129	10.2	8.7	13.1





#96
 1,2,3-Trichlorobenzene
 Concen: 1.066 ug/l
 RT: 15.835 min Scan# 21
 Delta R.T. 0.000 min
 Lab File: VN084730.D
 Acq: 07 Nov 2024 18:46

Instrument :
 MSVOA_N
 ClientSampleId :



Tgt Ion	Resp	Lower	Upper
180	2263	100	100
182	83.7	48.2	144.6
145	35.5	17.3	51.9

