

Data Path : Z:\voasrv\HPCHEM1\MSVOA_U\Data\VU010522\
 Data File : VU046662.D
 Acq On : 05 Jan 2022 13:43
 Operator : SY/MD
 Sample : VSTD20041
 Misc : 5.0mL/MSVOA_U/WATER
 ALS Vial : 6 Sample Multiplier: 1

Instrument :
 MSVOA_U
 ClientSampleId :
 VSTD200041

Quant Time: Jan 06 02:21:59 2022
 Quant Method : Z:\voasrv\HPCHEM1\MSVOA_U\Method\SFAMULM010522WMA.M
 Quant Title : VOC Analysis
 QLast Update : Thu Jan 06 02:19:40 2022
 Response via : Initial Calibration

Compound	R.T.	QIon	Response	Conc	Units	Dev(Min)
Internal Standards						
1) 1,4-Difluorobenzene	6.253	114	190591	50.000	ug/L	0.00
28) Chlorobenzene-d5	9.420	117	185335	50.000	ug/L	0.00
58) 1,4-Dichlorobenzene-d4	11.816	152	106833	50.000	ug/L	0.00
System Monitoring Compounds						
4) Vinyl Chloride-d3	1.604	65	314802	199.622	ug/L	0.00
7) Chloroethane-d5	1.919	69	231391	192.093	ug/L	0.00
11) 1,1-Dichloroethene-d2	2.572	63	535325	190.536	ug/L	0.00
21) 2-Butanone-d5	4.649	46	476099	382.493	ug/L	0.00
24) Chloroform-d	5.070	84	543966	205.656	ug/L	0.00
26) 1,2-Dichloroethane-d4	5.706	65	345332	195.506	ug/L	0.00
32) Benzene-d6	5.732	84	1087659	202.680	ug/L	0.00
36) 1,2-Dichloropropane-d6	6.694	67	323975	195.712	ug/L	0.00
41) Toluene-d8	7.903	98	1005030	206.027	ug/L	0.00
43) trans-1,3-Dichloroprop...	8.182	79	178175	221.736	ug/L	0.00
47) 2-Hexanone-d5	8.645	63	419668	510.849	ug/L	0.00
56) 1,1,2,2-Tetrachloroeth...	10.761	84	533789	211.293	ug/L	0.00
66) 1,2-Dichlorobenzene-d4	12.198	152	423344	203.445	ug/L	0.00
Target Compounds						
2) Dichlorodifluoromethane	1.388	85	332482	165.824	ug/L	100
3) Chloromethane	1.523	50	287071	159.600	ug/L	100
5) Vinyl chloride	1.607	62	308909	169.114	ug/L	100
6) Bromomethane	1.864	94	190420	181.072	ug/L	97
8) Chloroethane	1.941	64	183396	173.446	ug/L	95
9) Trichlorofluoromethane	2.144	101	443136	183.378	ug/L	100
10) 1,1,2-Trichloro-1,2,2-...	2.584	101	249659	182.275	ug/L	99
12) 1,1-Dichloroethene	2.584	96	237676	182.757	ug/L	96
13) Acetone	2.668	43	415065	279.457	ug/L	99
14) Carbon disulfide	2.800	76	700465	174.859	ug/L	100
15) Methyl Acetate	2.961	43	286555	161.564	ug/L	99
16) Methylene chloride	3.051	84	266848	171.367	ug/L	100
17) trans-1,2-Dichloroethene	3.359	96	252654	184.060	ug/L	98
18) Methyl tert-butyl Ether	3.369	73	812974	192.349	ug/L	100
19) 1,1-Dichloroethane	3.877	63	444905	177.656	ug/L	99
20) cis-1,2-Dichloroethene	4.671	96	281447	188.331	ug/L	99
22) 2-Butanone	4.729	43	502726	308.758	ug/L	99
23) Bromochloromethane	4.980	128	142214	186.247	ug/L	96
25) Chloroform	5.092	83	487702	175.323	ug/L	99
27) 1,2-Dichloroethane	5.800	62	382633	184.106	ug/L	100
29) Cyclohexane	5.395	56	405070	190.109	ug/L	98
30) 1,1,1-Trichloroethane	5.324	97	438194	192.070	ug/L	99
31) Carbon tetrachloride	5.530	117	382452	197.835	ug/L	99
33) Benzene	5.780	78	1039686	185.440	ug/L	100
34) Trichloroethene	6.546	95	275037	187.334	ug/L	98
35) Methylcyclohexane	6.768	83	470218	206.644	ug/L	99
37) 1,2-Dichloropropane	6.796	63	263721	180.153	ug/L	100
38) Bromodichloromethane	7.108	83	375815	191.944	ug/L	99
39) cis-1,3-Dichloropropene	7.610	75	458010	205.051	ug/L	99
40) 4-Methyl-2-pentanone	7.803	43	803922	379.482	ug/L	99
42) Toluene	7.973	91	1137071	189.039	ug/L	97
44) trans-1,3-Dichloropropene	8.214	75	444604	205.053	ug/L	99

Data Path : Z:\voasrv\HPCHEM1\MSVOA_U\Data\VU010522\
 Data File : VU046662.D
 Acq On : 05 Jan 2022 13:43
 Operator : SY/MD
 Sample : VSTD20041
 Misc : 5.0mL/MSVOA_U/WATER
 ALS Vial : 6 Sample Multiplier: 1

Instrument :
 MSVOA_U
 ClientSampleId :
 VSTD200041

Quant Time: Jan 06 02:21:59 2022
 Quant Method : Z:\voasrv\HPCHEM1\MSVOA_U\Method\SFAMULM010522WMA.M
 Quant Title : VOC Analysis
 QLast Update : Thu Jan 06 02:19:40 2022
 Response via : Initial Calibration

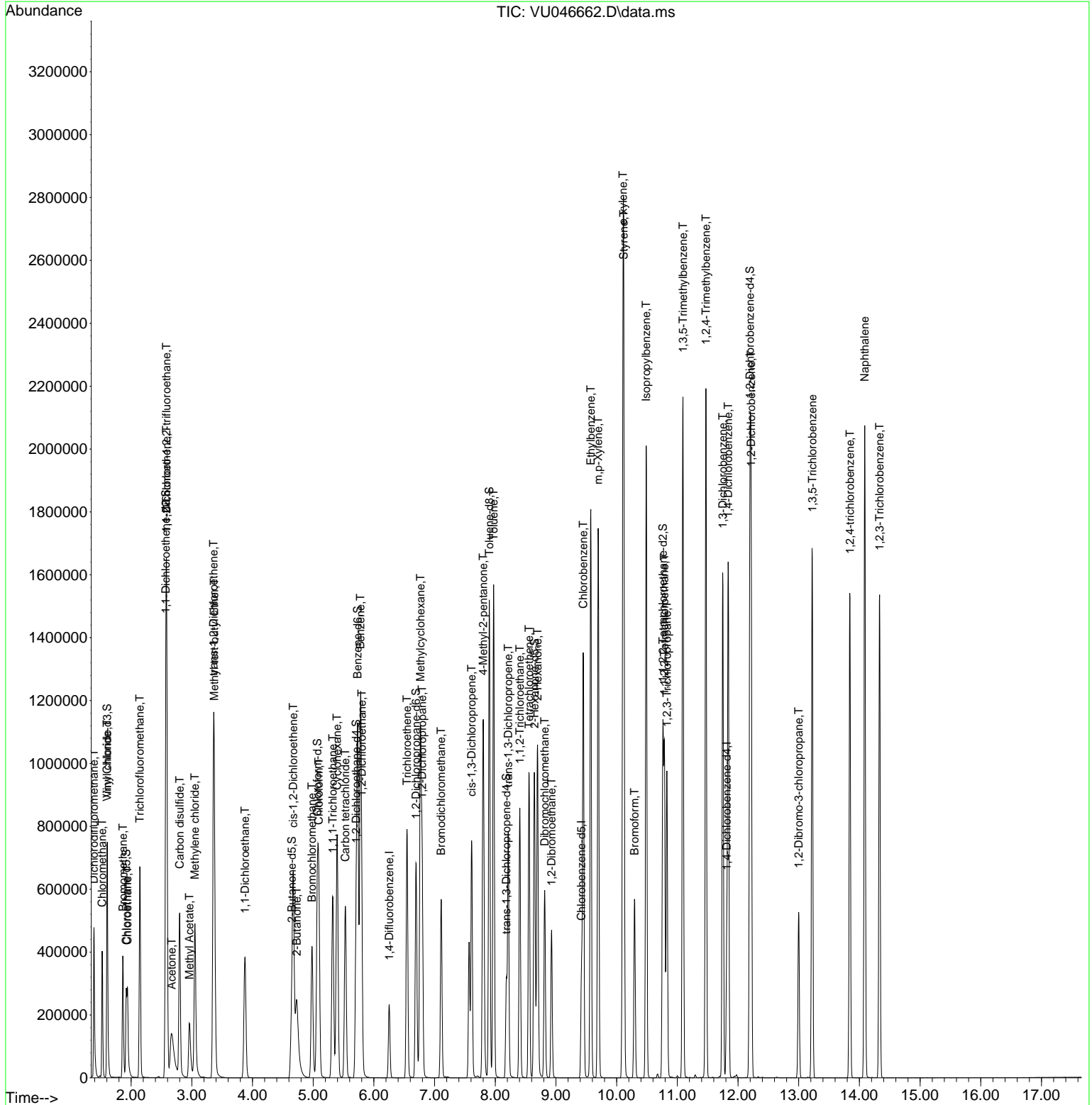
Compound	R.T.	QIon	Response	Conc	Units	Dev(Min)
45) 1,1,2-Trichloroethane	8.404	97	271152	183.732	ug/L	99
46) Tetrachloroethene	8.555	164	212994	196.028	ug/L	98
48) 2-Hexanone	8.697	43	671807	357.913	ug/L	99
49) Dibromochloromethane	8.816	129	316377	203.918	ug/L	99
50) 1,2-Dibromoethane	8.928	107	304413	191.902	ug/L	99
51) Chlorobenzene	9.449	112	731093	187.822	ug/L	99
52) Ethylbenzene	9.574	91	1279748	199.089	ug/L	99
53) m,p-Xylene	9.697	106	499775	199.347	ug/L	100
54) o-xylene	10.105	106	486931	200.040	ug/L	100
55) Styrene	10.118	104	867702	208.742	ug/L	99
57) 1,1,2,2-Tetrachloroethane	10.787	83	496930	195.325	ug/L	99
59) Bromoform	10.295	173	255933	201.362	ug/L	98
60) 1,2,3-Trichloropropane	10.828	75	408678	173.962	ug/L	99
61) Isopropylbenzene	10.488	105	1312935	189.744	ug/L	100
62) 1,3,5-Trimethylbenzene	11.092	105	1198856	207.970	ug/L	99
63) 1,2,4-Trimethylbenzene	11.472	105	1208041	209.576	ug/L	100
64) 1,3-Dichlorobenzene	11.748	146	645729	195.503	ug/L	98
65) 1,4-Dichlorobenzene	11.838	146	652030	190.941	ug/L	99
67) 1,2-Dichlorobenzene	12.217	146	630699	189.417	ug/L	100
68) 1,2-Dibromo-3-chloropr...	12.999	75	133358	208.374	ug/L	94
69) 1,3,5-Trichlorobenzene	13.224	180	505049	208.980	ug/L	99
70) 1,2,4-trichlorobenzene	13.844	180	462197	215.246	ug/L	100
71) Naphthalene	14.089	128	1606853	217.128	ug/L	100
72) 1,2,3-Trichlorobenzene	14.333	180	451237	206.501	ug/L	100

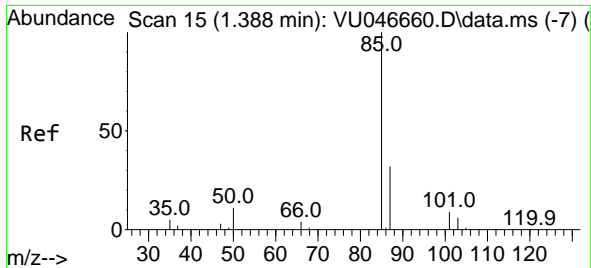
(#) = qualifier out of range (m) = manual integration (+) = signals summed

Data Path : Z:\voasrv\HPCHEM1\MSVOA_U\Data\VU010522\
 Data File : VU046662.D
 Acq On : 05 Jan 2022 13:43
 Operator : SY/MD
 Sample : VSTD20041
 Misc : 5.0mL/MSVOA_U/WATER
 ALS Vial : 6 Sample Multiplier: 1

Instrument :
 MSVOA_U
 ClientSampleId :
 VSTD200041

Quant Time: Jan 06 02:21:59 2022
 Quant Method : Z:\voasrv\HPCHEM1\MSVOA_U\Method\SFAMULM010522WMA.M
 Quant Title : VOC Analysis
 QLast Update : Thu Jan 06 02:19:40 2022
 Response via : Initial Calibration

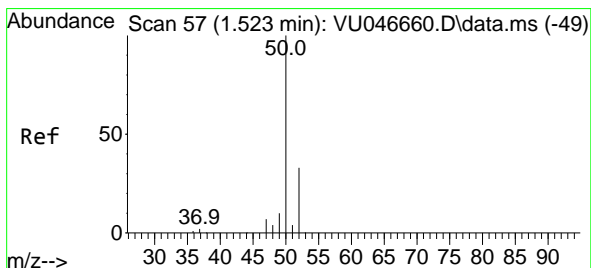
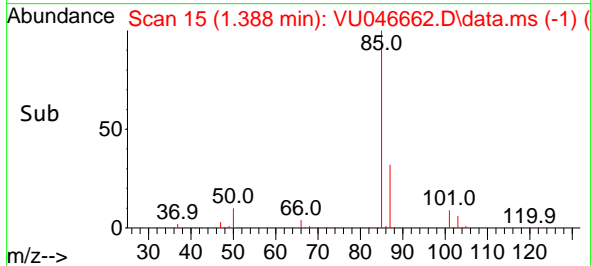
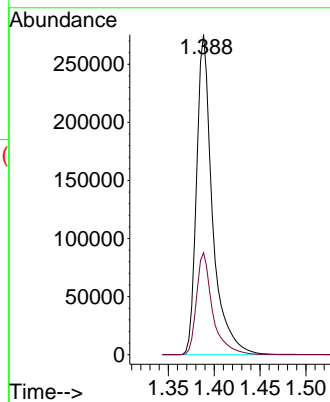
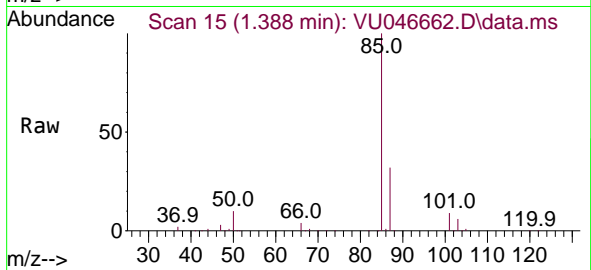




#2
 Dichlorodifluoromethane
 Concen: 165.824 ug/L
 RT: 1.388 min Scan# 15
 Delta R.T. 0.000 min
 Lab File: VU046662.D
 Acq: 05 Jan 2022 13:43

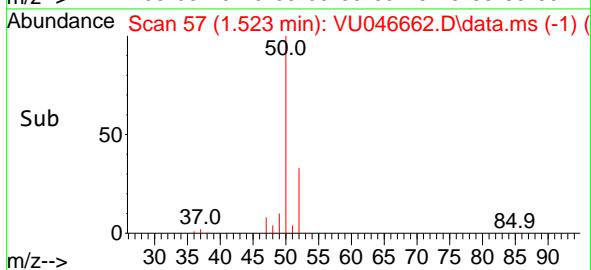
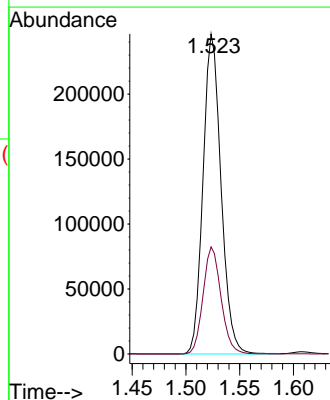
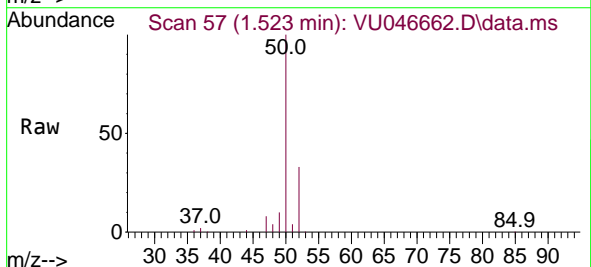
Instrument : MSVOA_U
 ClientSampleId : VSTD200041

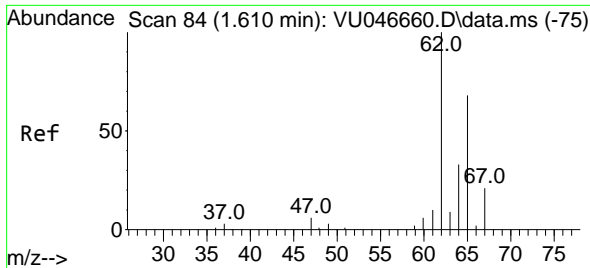
Tgt Ion: 85 Resp: 332482
 Ion Ratio Lower Upper
 85 100
 87 32.2 25.6 38.4



#3
 Chloromethane
 Concen: 159.600 ug/L
 RT: 1.523 min Scan# 57
 Delta R.T. 0.000 min
 Lab File: VU046662.D
 Acq: 05 Jan 2022 13:43

Tgt Ion: 50 Resp: 287071
 Ion Ratio Lower Upper
 50 100
 52 33.5 23.2 43.2





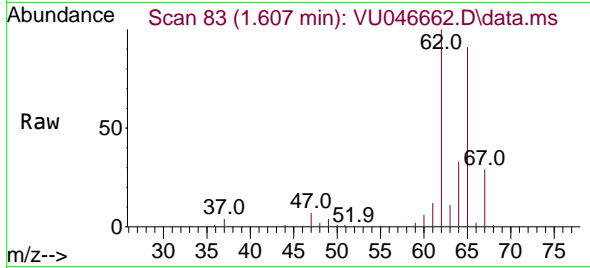
#5
 Vinyl chloride
 Concen: 169.114 ug/L
 RT: 1.607 min Scan# 81
 Delta R.T. -0.003 min
 Lab File: VU046662.D
 Acq: 05 Jan 2022 13:43

Instrument :

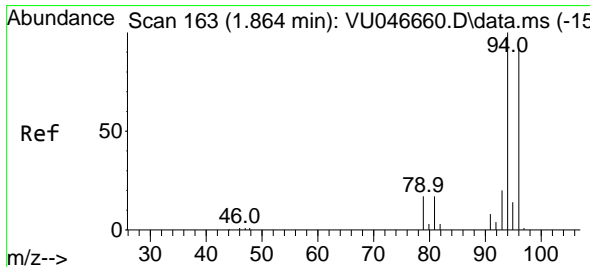
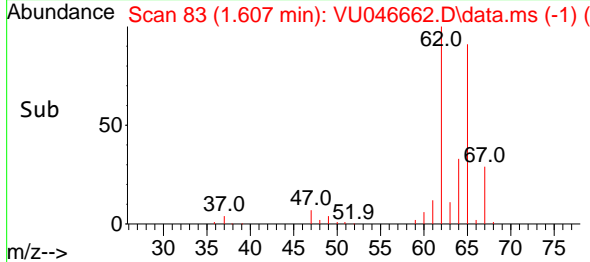
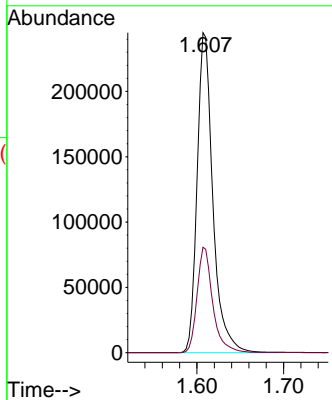
MSVOA_U

ClientSampleId :

VSTD200041

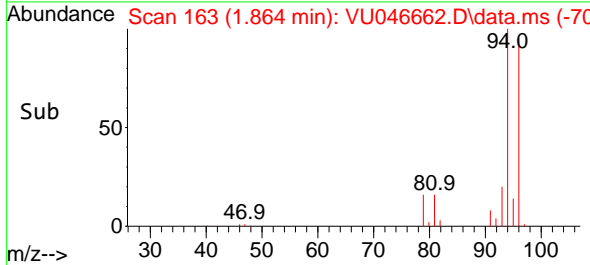
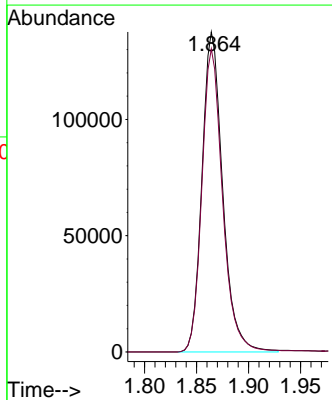
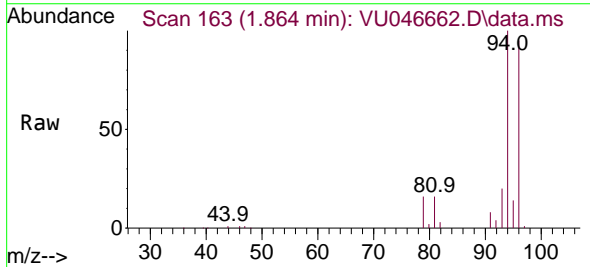


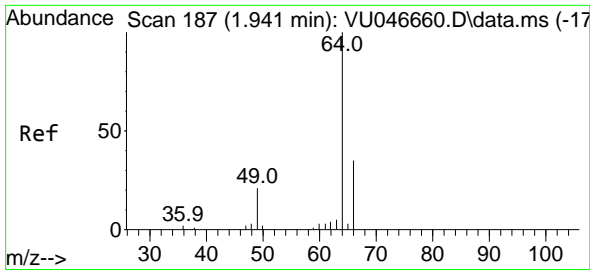
Tgt Ion: 62 Resp: 308909
 Ion Ratio Lower Upper
 62 100
 64 32.9 23.1 42.9



#6
 Bromomethane
 Concen: 181.072 ug/L
 RT: 1.864 min Scan# 163
 Delta R.T. 0.000 min
 Lab File: VU046662.D
 Acq: 05 Jan 2022 13:43

Tgt Ion: 94 Resp: 190420
 Ion Ratio Lower Upper
 94 100
 96 94.7 64.4 119.6

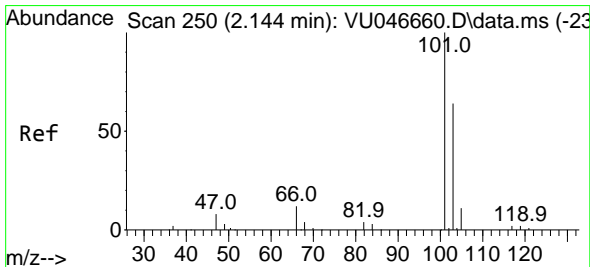
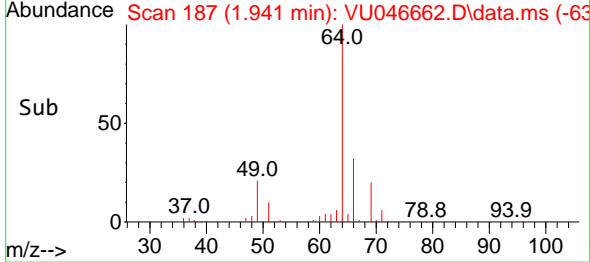
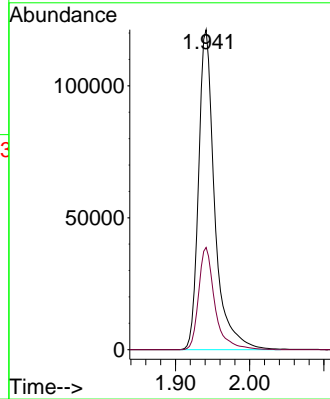
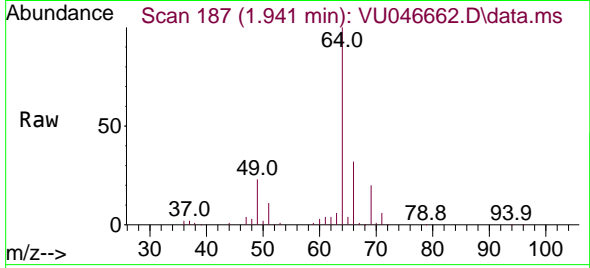




#8
 Chloroethane
 Concen: 173.446 ug/L
 RT: 1.941 min Scan# 187
 Delta R.T. 0.000 min
 Lab File: VU046662.D
 Acq: 05 Jan 2022 13:43

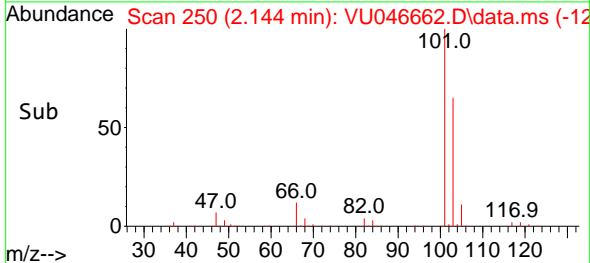
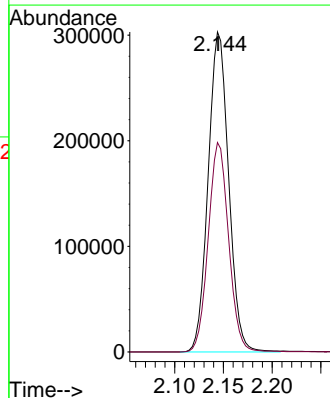
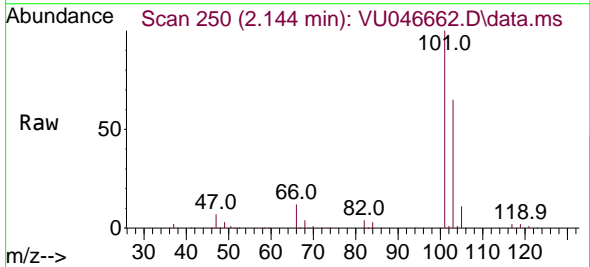
Instrument : MSVOA_U
 ClientSampleId : VSTD200041

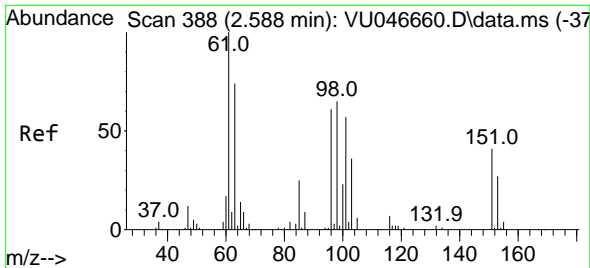
Tgt Ion: 64 Resp: 183396
 Ion Ratio Lower Upper
 64 100
 66 32.0 24.4 45.2



#9
 Trichlorofluoromethane
 Concen: 183.378 ug/L
 RT: 2.144 min Scan# 250
 Delta R.T. 0.000 min
 Lab File: VU046662.D
 Acq: 05 Jan 2022 13:43

Tgt Ion:101 Resp: 443136
 Ion Ratio Lower Upper
 101 100
 103 65.1 52.0 78.0

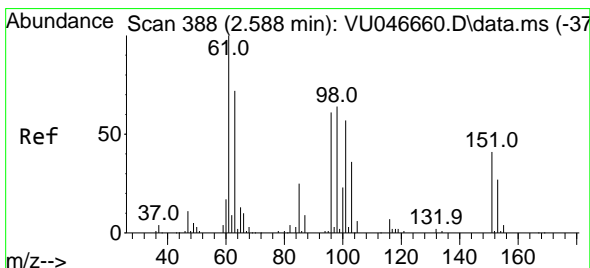
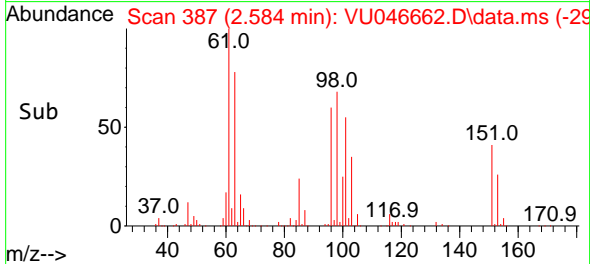
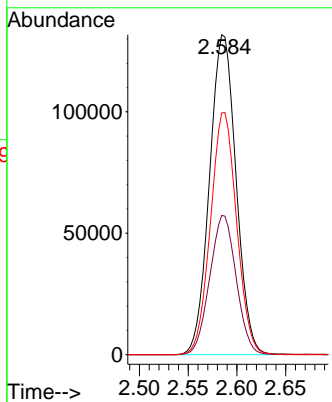
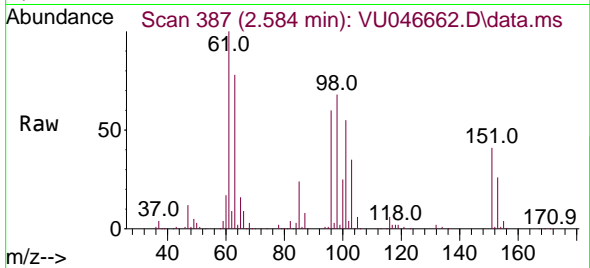




#10
 1,1,2-Trichloro-1,2,2-trifluoroethane
 Concen: 182.275 ug/L
 RT: 2.584 min Scan# 387
 Delta R.T. -0.003 min
 Lab File: VU046662.D
 Acq: 05 Jan 2022 13:43

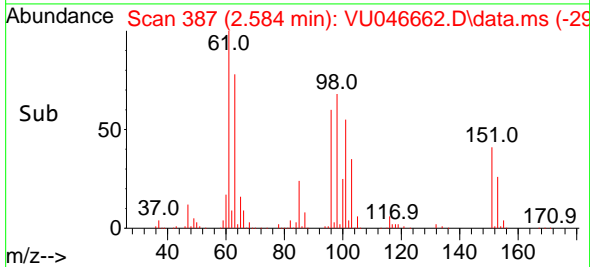
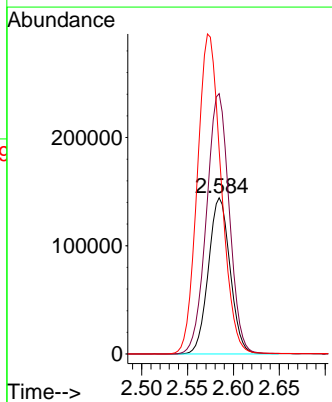
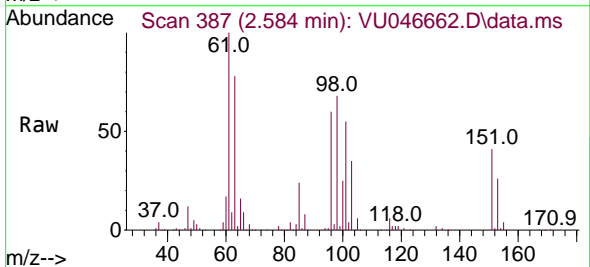
Instrument :
 MSVOA_U
 ClientSampleId :
 VSTD200041

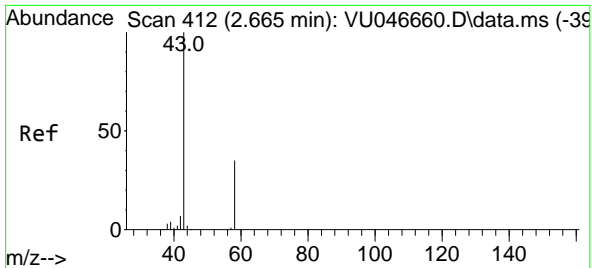
Tgt Ion	Resp	Lower	Upper
101	249659		
101	100		
85	43.4	34.9	52.3
151	74.6	58.3	87.5



#12
 1,1-Dichloroethene
 Concen: 182.757 ug/L
 RT: 2.584 min Scan# 387
 Delta R.T. -0.003 min
 Lab File: VU046662.D
 Acq: 05 Jan 2022 13:43

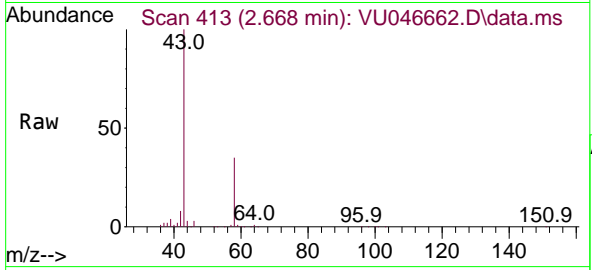
Tgt Ion	Resp	Lower	Upper
96	237676		
96	100		
61	166.7	114.9	213.3
63	130.6	86.0	159.8



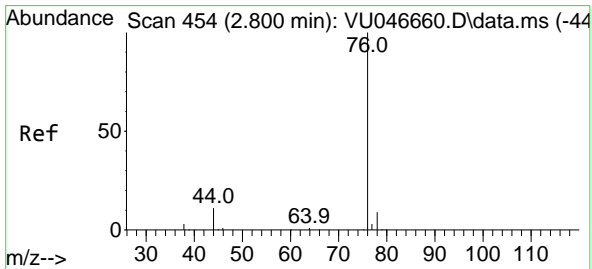
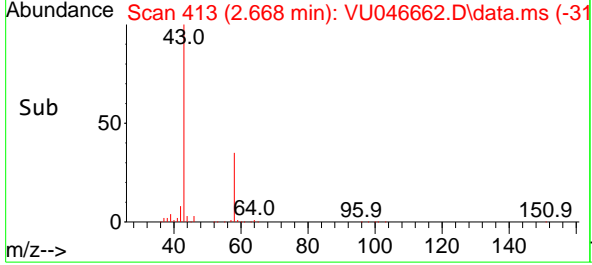
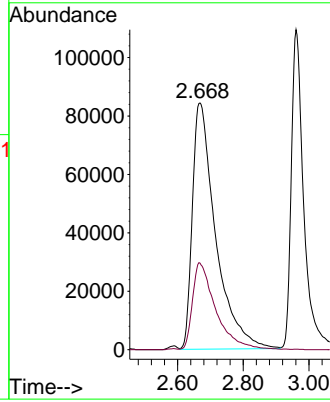


#13
 Acetone
 Concen: 279.457 ug/L
 RT: 2.668 min Scan# 413
 Delta R.T. 0.003 min
 Lab File: VU046662.D
 Acq: 05 Jan 2022 13:43

Instrument : MSVOA_U
 ClientSampleId : VSTD200041

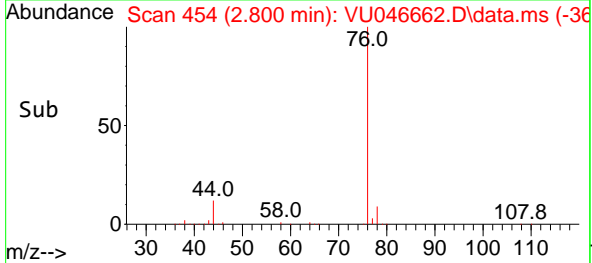
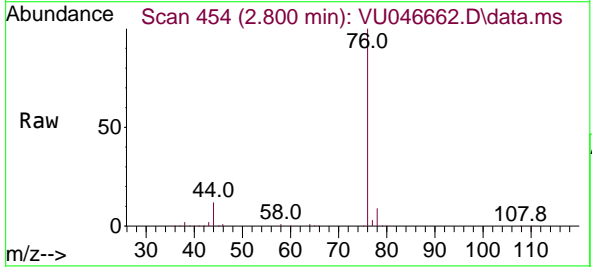
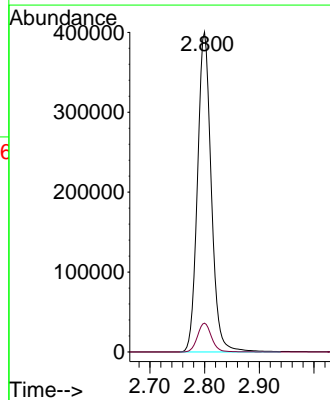


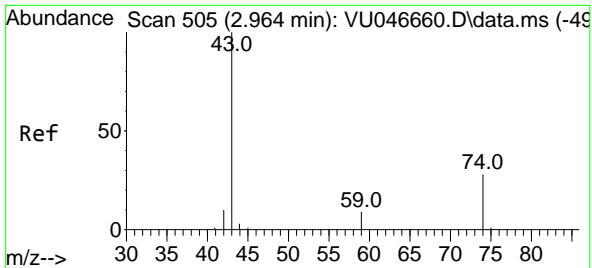
Tgt Ion: 43 Resp: 415065
 Ion Ratio Lower Upper
 43 100
 58 35.0 0.0 71.0



#14
 Carbon disulfide
 Concen: 174.859 ug/L
 RT: 2.800 min Scan# 454
 Delta R.T. 0.000 min
 Lab File: VU046662.D
 Acq: 05 Jan 2022 13:43

Tgt Ion: 76 Resp: 700465
 Ion Ratio Lower Upper
 76 100
 78 9.0 7.1 10.7



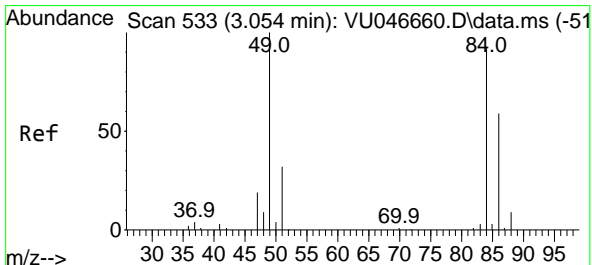
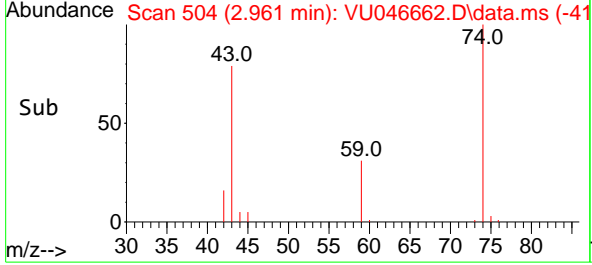
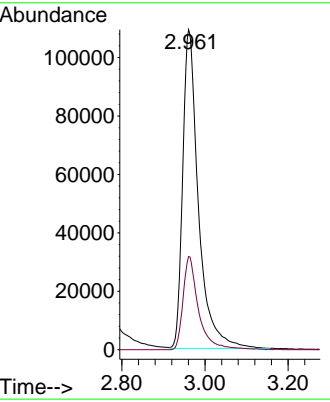
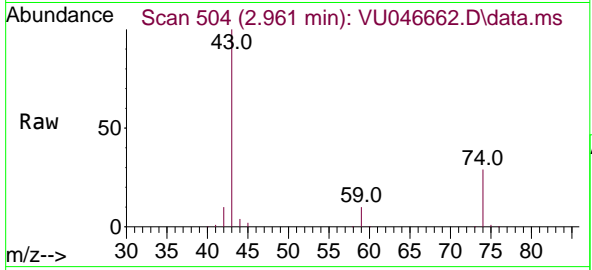


#15
Methyl Acetate
Concen: 161.564 ug/L
RT: 2.961 min Scan# 504
Delta R.T. -0.003 min
Lab File: VU046662.D
Acq: 05 Jan 2022 13:43

Instrument : MSVOA_U
Client SampleId : VSTD200041

Tgt Ion: 43 Resp: 286555

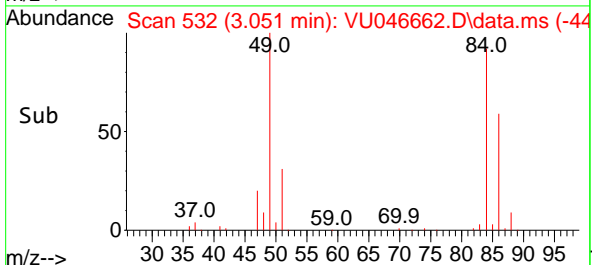
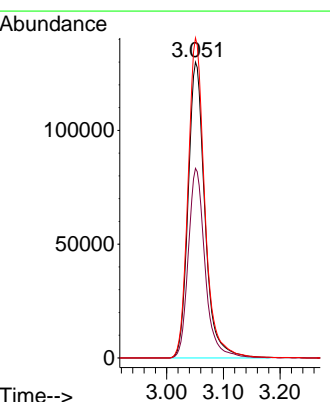
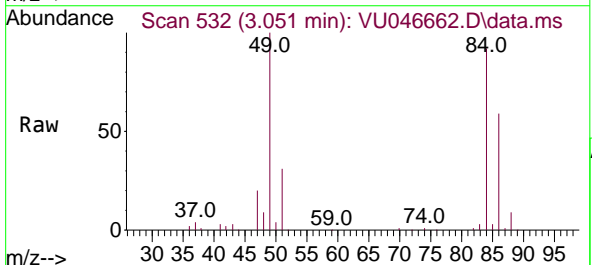
Ion	Ratio	Lower	Upper
43	100		
74	28.4	22.3	33.5

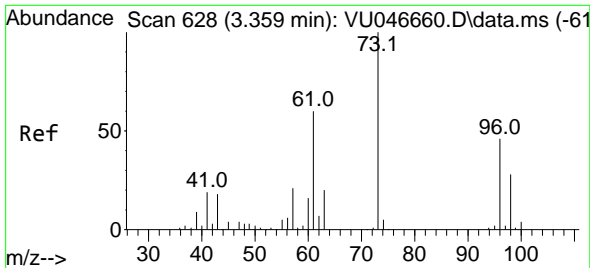


#16
Methylene chloride
Concen: 171.367 ug/L
RT: 3.051 min Scan# 532
Delta R.T. -0.003 min
Lab File: VU046662.D
Acq: 05 Jan 2022 13:43

Tgt Ion: 84 Resp: 266848

Ion	Ratio	Lower	Upper
84	100		
86	64.1	44.7	82.9
49	108.2	75.9	141.1

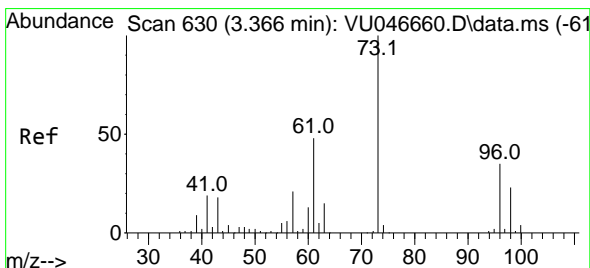
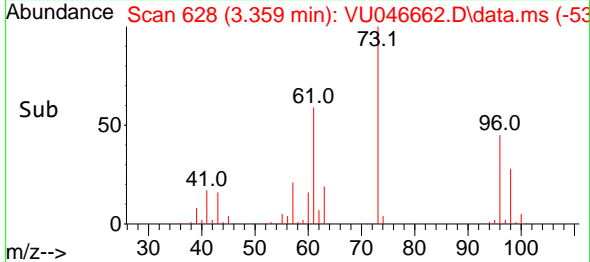
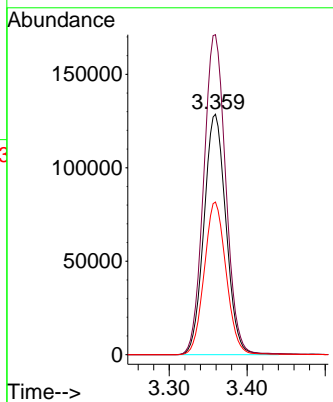
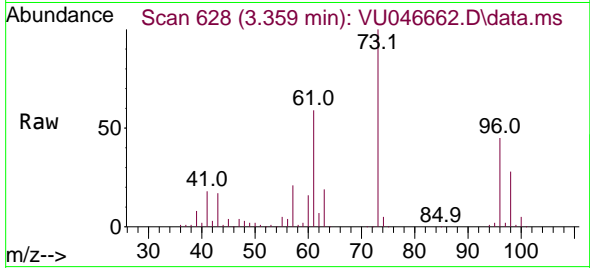




#17
 trans-1,2-Dichloroethene
 Concen: 184.060 ug/L
 RT: 3.359 min Scan# 611
 Delta R.T. 0.000 min
 Lab File: VU046662.D
 Acq: 05 Jan 2022 13:43

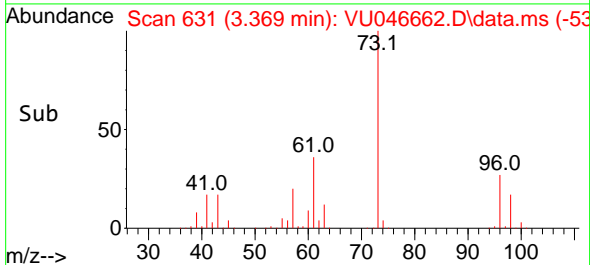
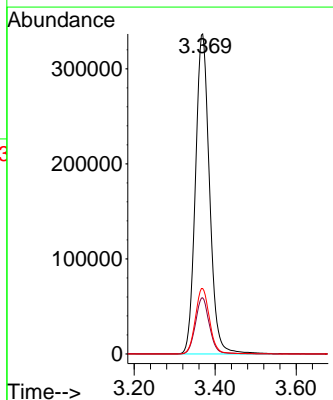
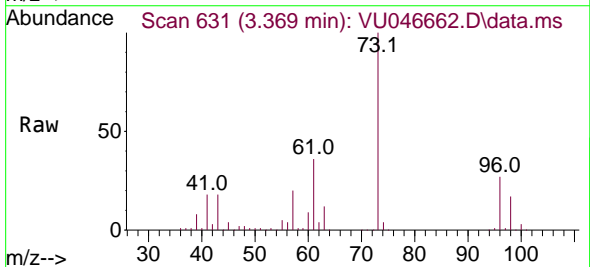
Instrument :
 MSVOA_U
 ClientSampleId :
 VSTD200041

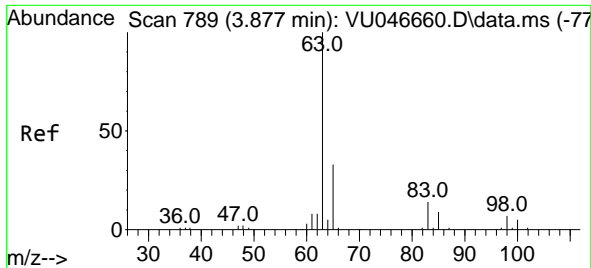
Tgt Ion: 96 Resp: 252654
 Ion Ratio Lower Upper
 96 100
 61 133.0 92.5 171.9
 98 63.5 42.4 78.6



#18
 Methyl tert-butyl Ether
 Concen: 192.349 ug/L
 RT: 3.369 min Scan# 631
 Delta R.T. 0.003 min
 Lab File: VU046662.D
 Acq: 05 Jan 2022 13:43

Tgt Ion: 73 Resp: 812974
 Ion Ratio Lower Upper
 73 100
 43 17.1 14.1 21.1
 57 20.5 16.4 24.6





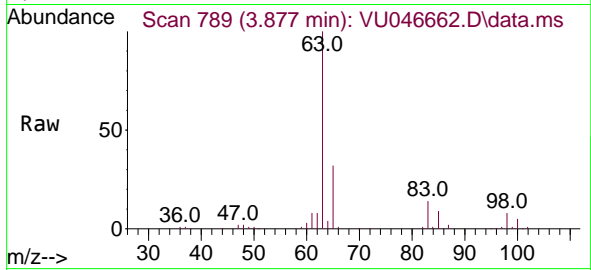
#19
 1,1-Dichloroethane
 Concen: 177.656 ug/L
 RT: 3.877 min Scan# 789
 Delta R.T. 0.000 min
 Lab File: VU046662.D
 Acq: 05 Jan 2022 13:43

Instrument :

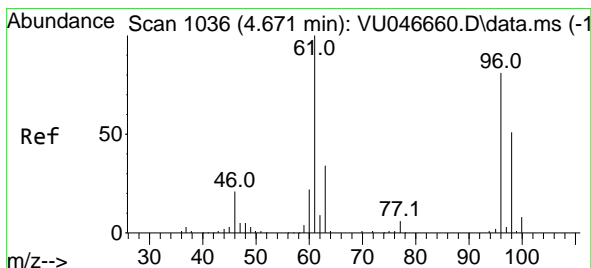
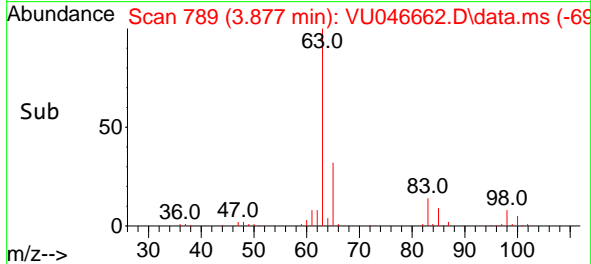
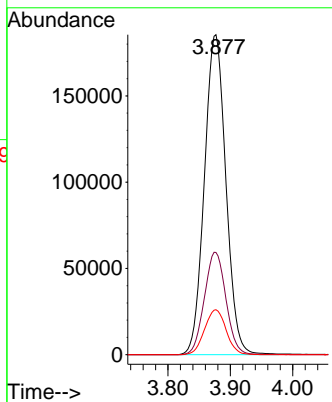
MSVOA_U

ClientSampleId :

VSTD200041

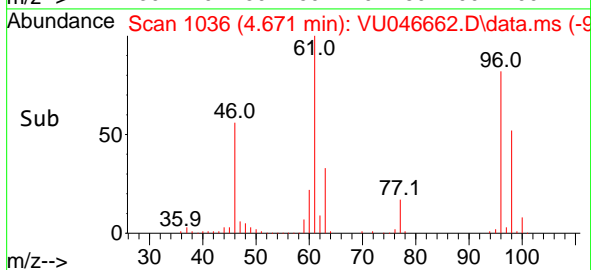
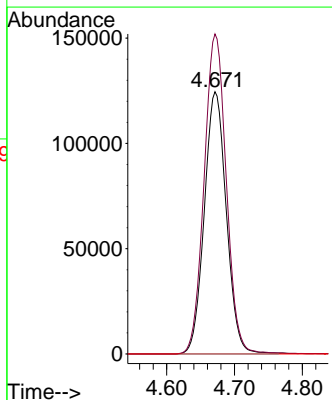
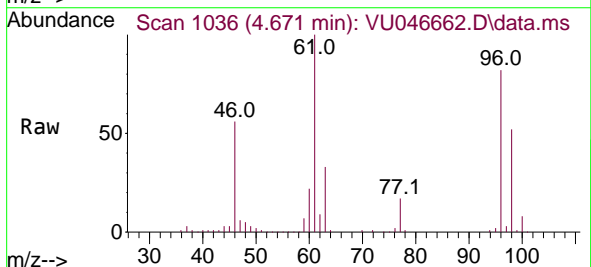


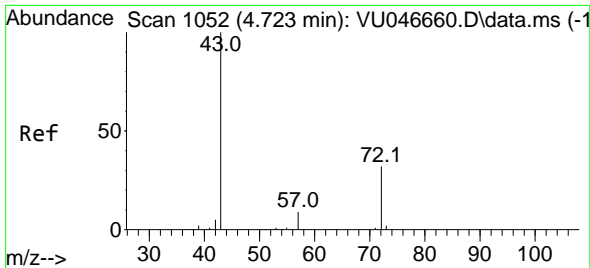
Tgt Ion: 63 Resp: 444905
 Ion Ratio Lower Upper
 63 100
 65 32.0 22.8 42.4
 83 14.0 9.6 17.8



#20
 cis-1,2-Dichloroethene
 Concen: 188.331 ug/L
 RT: 4.671 min Scan# 1036
 Delta R.T. 0.000 min
 Lab File: VU046662.D
 Acq: 05 Jan 2022 13:43

Tgt Ion: 96 Resp: 281447
 Ion Ratio Lower Upper
 96 100
 61 122.0 86.0 159.6
 68 0.0 0.0 0.0

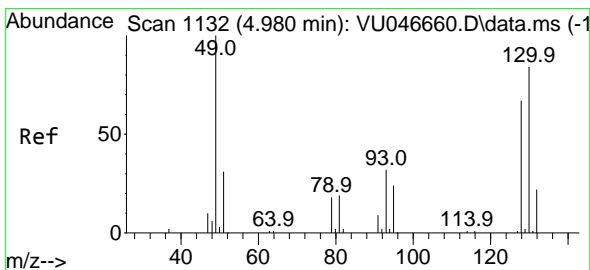
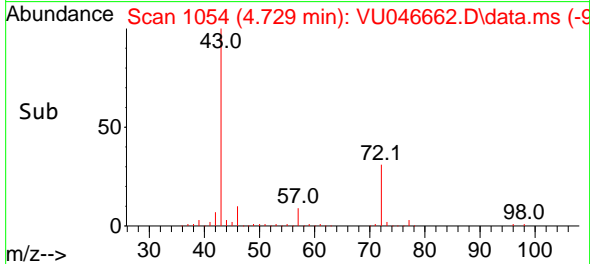
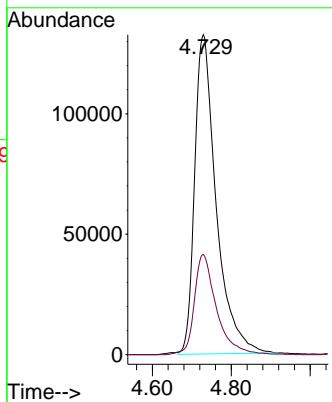
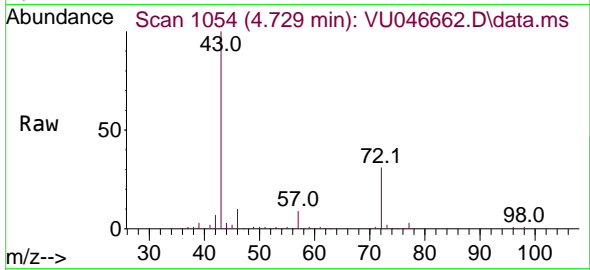




#22
 2-Butanone
 Concen: 308.758 ug/L
 RT: 4.729 min Scan# 1054
 Delta R.T. 0.006 min
 Lab File: VU046662.D
 Acq: 05 Jan 2022 13:43

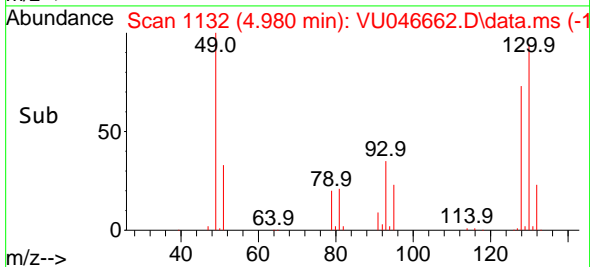
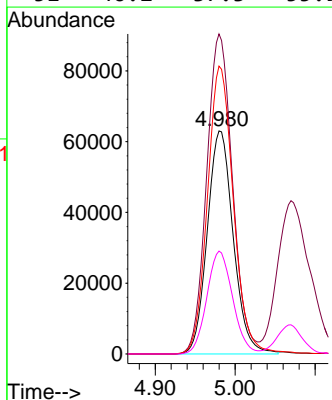
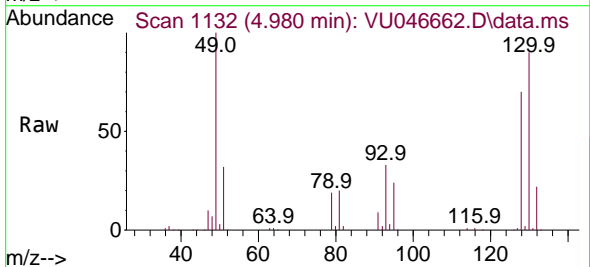
Instrument : MSVOA_U
 ClientSampleId : VSTD200041

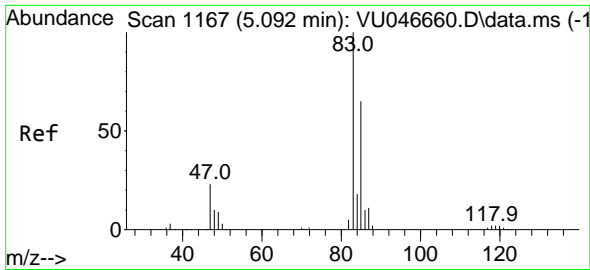
Tgt Ion: 43 Resp: 502726
 Ion Ratio Lower Upper
 43 100
 72 32.0 15.6 46.8



#23
 Bromochloromethane
 Concen: 186.247 ug/L
 RT: 4.980 min Scan# 1132
 Delta R.T. 0.000 min
 Lab File: VU046662.D
 Acq: 05 Jan 2022 13:43

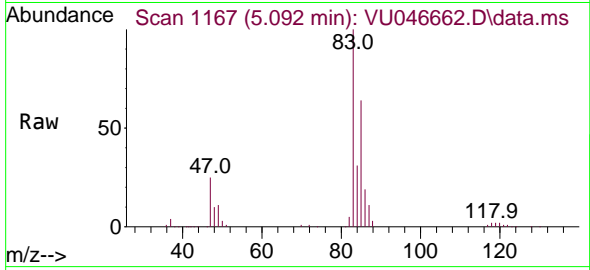
Tgt Ion: 128 Resp: 142214
 Ion Ratio Lower Upper
 128 100
 49 143.5 105.4 195.8
 130 129.0 88.7 164.7
 51 46.2 37.3 55.9



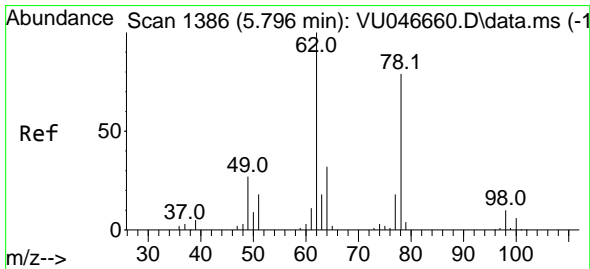
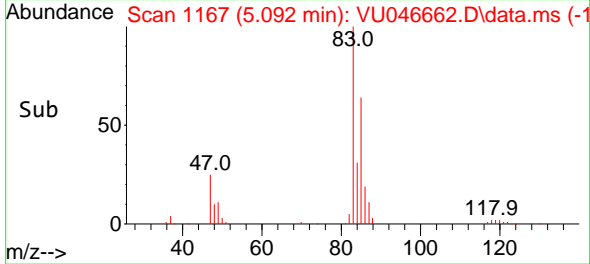
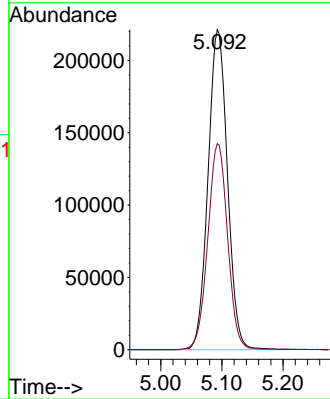


#25
 Chloroform
 Concen: 175.323 ug/L
 RT: 5.092 min Scan# 1167
 Delta R.T. 0.000 min
 Lab File: VU046662.D
 Acq: 05 Jan 2022 13:43

Instrument :
 MSVOA_U
 ClientSampleId :
 VSTD200041

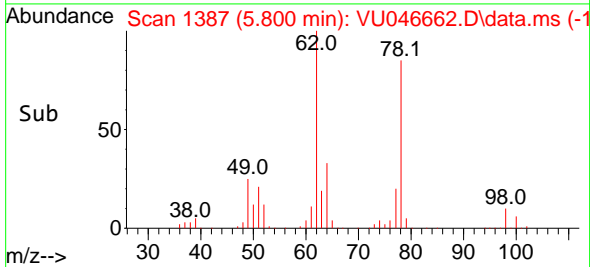
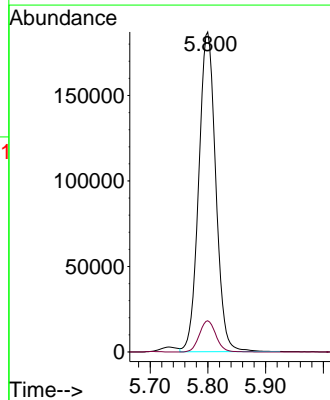
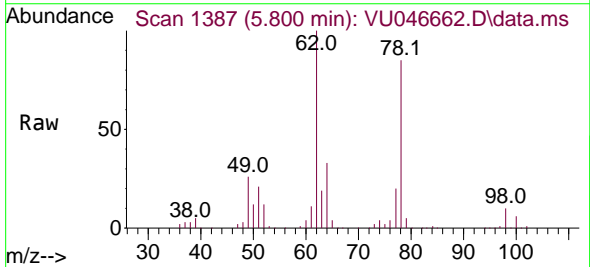


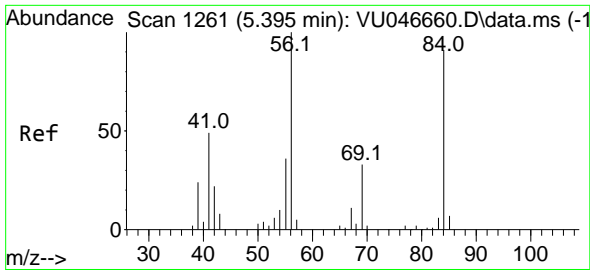
Tgt Ion: 83 Resp: 487702
 Ion Ratio Lower Upper
 83 100
 85 64.4 45.7 84.9



#27
 1,2-Dichloroethane
 Concen: 184.106 ug/L
 RT: 5.800 min Scan# 1387
 Delta R.T. 0.003 min
 Lab File: VU046662.D
 Acq: 05 Jan 2022 13:43

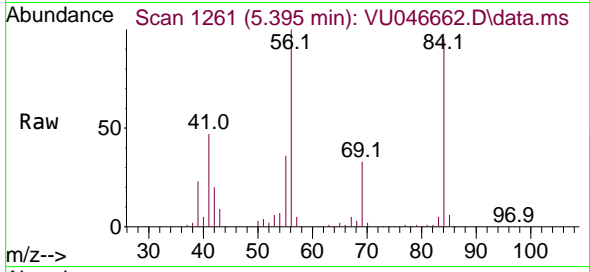
Tgt Ion: 62 Resp: 382633
 Ion Ratio Lower Upper
 62 100
 98 9.7 7.7 11.5



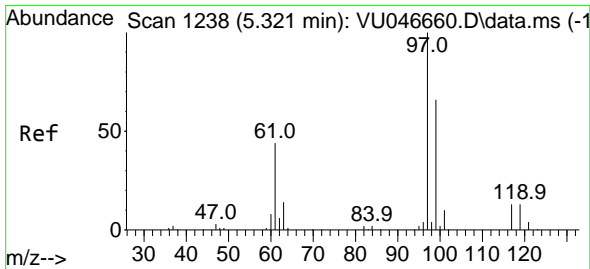
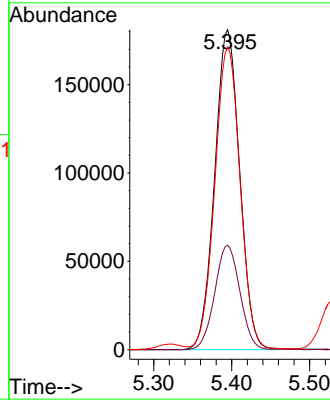
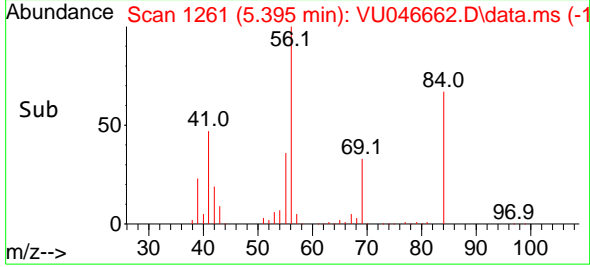


#29
 Cyclohexane
 Concen: 190.109 ug/L
 RT: 5.395 min Scan# 1261
 Delta R.T. 0.000 min
 Lab File: VU046662.D
 Acq: 05 Jan 2022 13:43

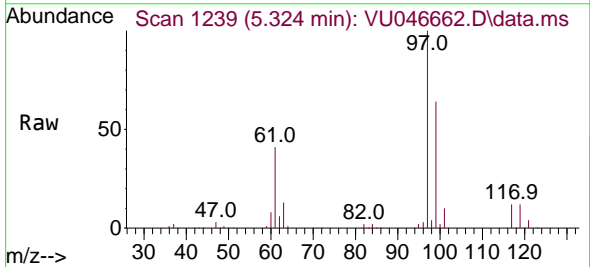
Instrument : MSVOA_U
 ClientSampleId : VSTD200041



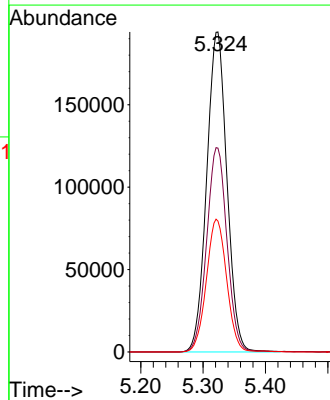
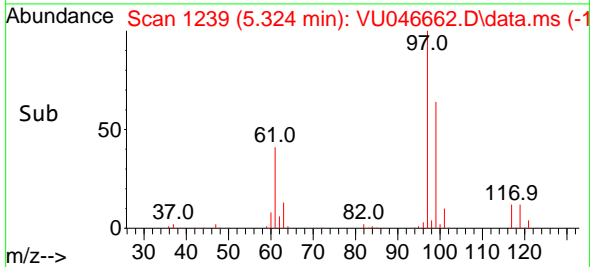
Tgt Ion: 56 Resp: 405070
 Ion Ratio Lower Upper
 56 100
 69 32.8 25.8 38.6
 84 95.5 74.2 111.2

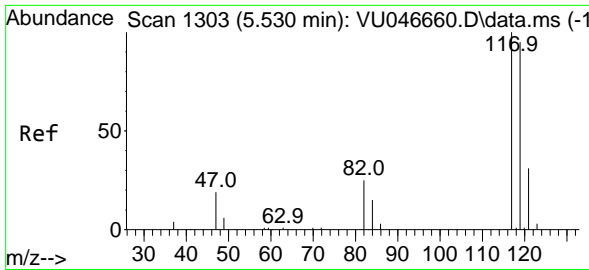


#30
 1,1,1-Trichloroethane
 Concen: 192.070 ug/L
 RT: 5.324 min Scan# 1239
 Delta R.T. 0.003 min
 Lab File: VU046662.D
 Acq: 05 Jan 2022 13:43



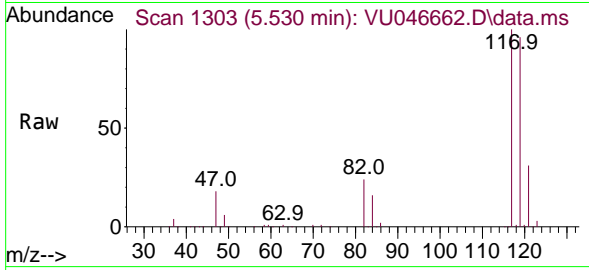
Tgt Ion: 97 Resp: 438194
 Ion Ratio Lower Upper
 97 100
 99 64.1 51.1 76.7
 61 41.5 34.1 51.1



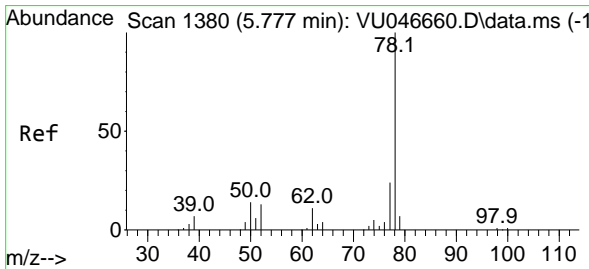
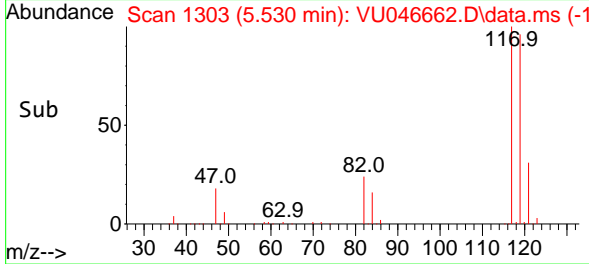
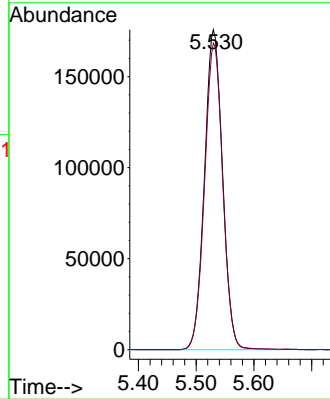


#31
 Carbon tetrachloride
 Concen: 197.835 ug/L
 RT: 5.530 min Scan# 111
 Delta R.T. 0.000 min
 Lab File: VU046662.D
 Acq: 05 Jan 2022 13:43

Instrument :
 MSVOA_U
 ClientSampleId :
 VSTD200041

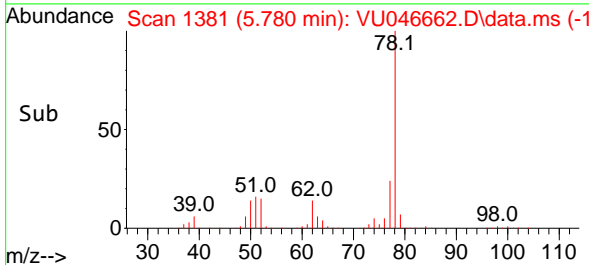
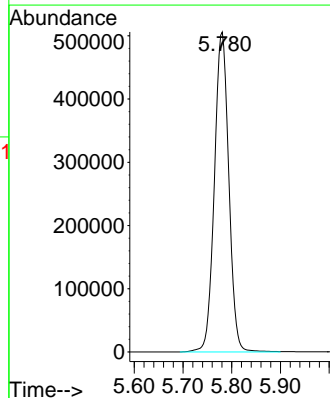
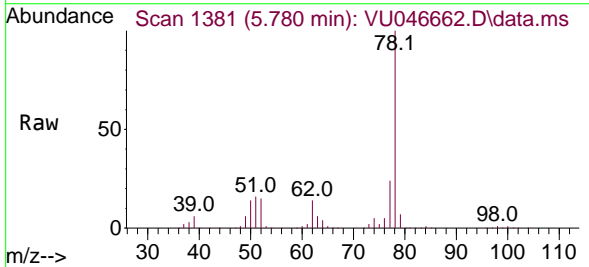


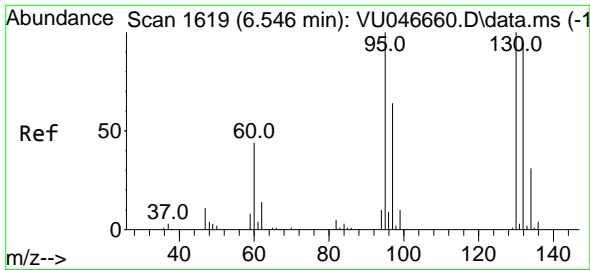
Tgt Ion:117 Resp: 382452
 Ion Ratio Lower Upper
 117 100
 119 95.8 77.5 116.3



#33
 Benzene
 Concen: 185.440 ug/L
 RT: 5.780 min Scan# 1381
 Delta R.T. 0.003 min
 Lab File: VU046662.D
 Acq: 05 Jan 2022 13:43

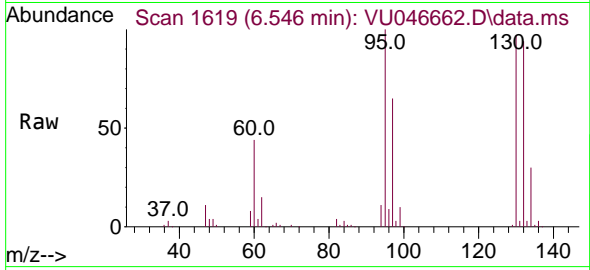
Tgt Ion: 78 Resp: 1039686





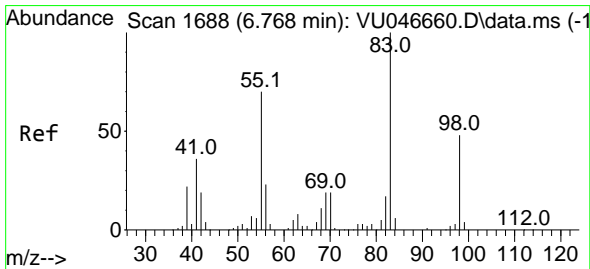
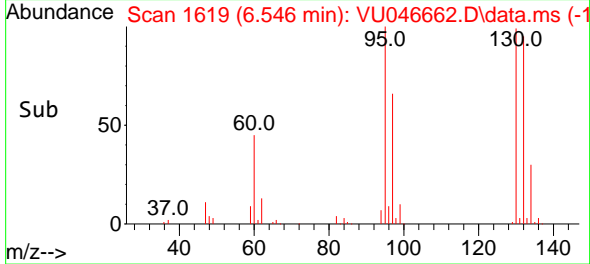
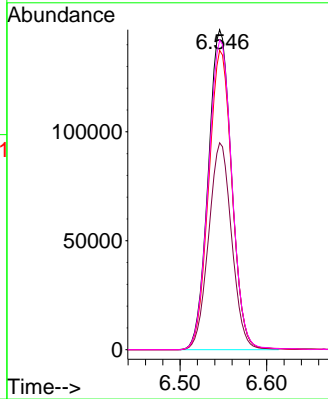
#34
 Trichloroethene
 Concen: 187.334 ug/L
 RT: 6.546 min Scan# 1619
 Delta R.T. 0.000 min
 Lab File: VU046662.D
 Acq: 05 Jan 2022 13:43

Instrument : MSVOA_U
 ClientSampleId : VSTD200041

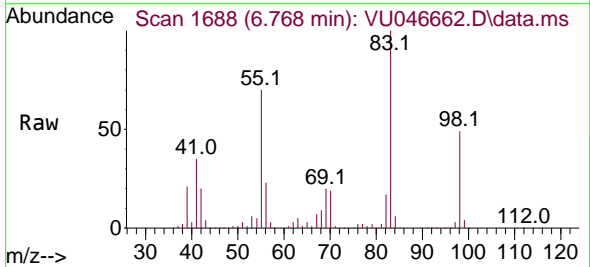


Tgt Ion: 95 Resp: 275037

Ion	Ratio	Lower	Upper
95	100		
97	64.7	45.1	83.7
132	93.6	66.7	123.9
130	96.8	70.2	130.4

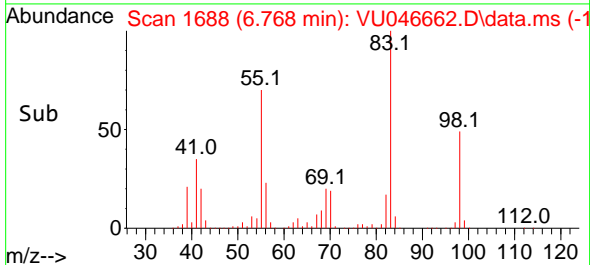
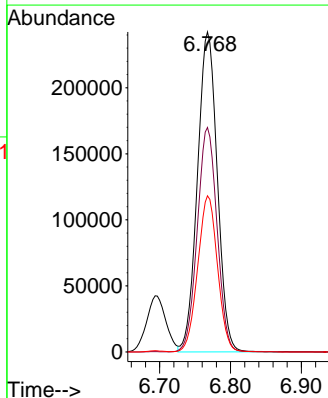


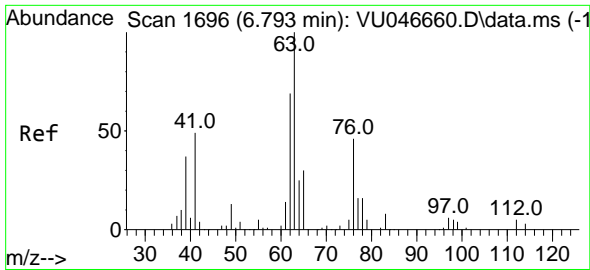
#35
 Methylcyclohexane
 Concen: 206.644 ug/L
 RT: 6.768 min Scan# 1688
 Delta R.T. 0.000 min
 Lab File: VU046662.D
 Acq: 05 Jan 2022 13:43



Tgt Ion: 83 Resp: 470218

Ion	Ratio	Lower	Upper
83	100		
55	70.0	56.6	85.0
98	48.7	38.4	57.6

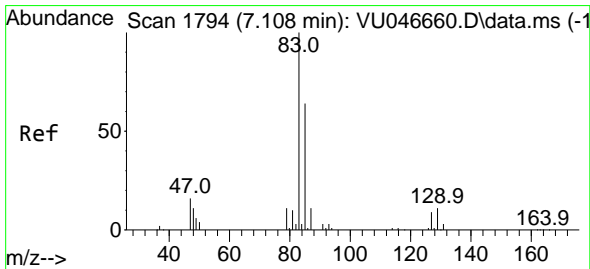
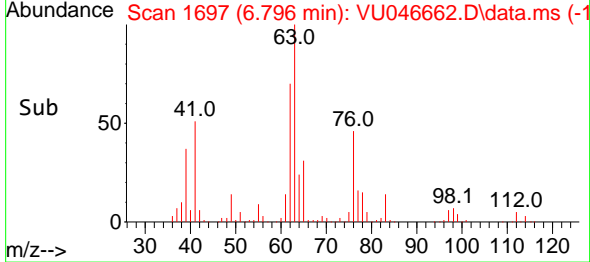
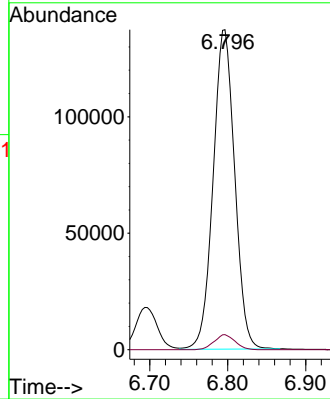
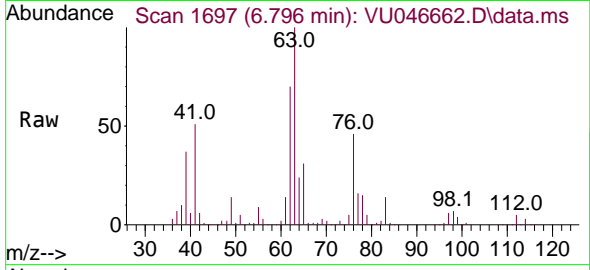




#37
 1,2-Dichloropropane
 Concen: 180.153 ug/L
 RT: 6.796 min Scan# 1696
 Delta R.T. 0.003 min
 Lab File: VU046662.D
 Acq: 05 Jan 2022 13:43

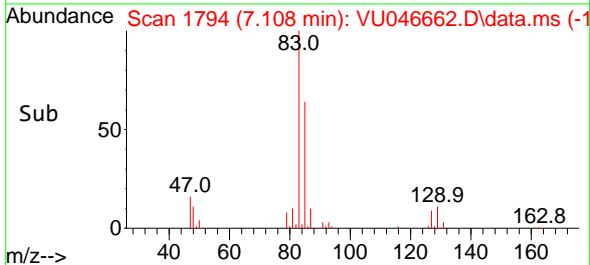
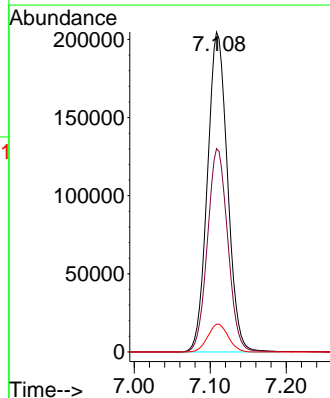
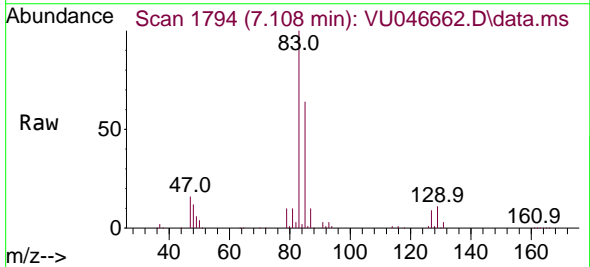
Instrument :
 MSVOA_U
 ClientSampleId :
 VSTD200041

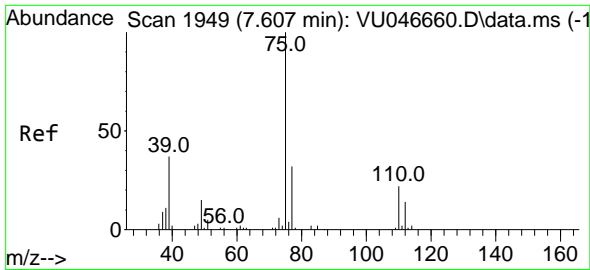
Tgt Ion: 63 Resp: 263721
 Ion Ratio Lower Upper
 63 100
 112 4.5 3.7 5.5



#38
 Bromodichloromethane
 Concen: 191.944 ug/L
 RT: 7.108 min Scan# 1794
 Delta R.T. 0.000 min
 Lab File: VU046662.D
 Acq: 05 Jan 2022 13:43

Tgt Ion: 83 Resp: 375815
 Ion Ratio Lower Upper
 83 100
 85 63.6 45.0 83.6
 127 8.7 7.3 10.9

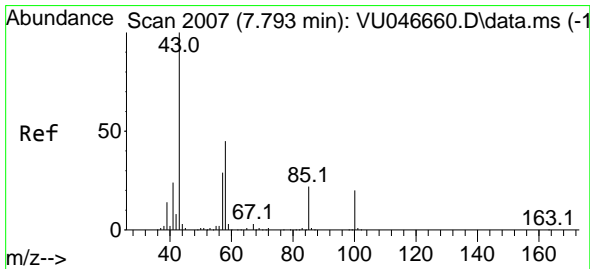
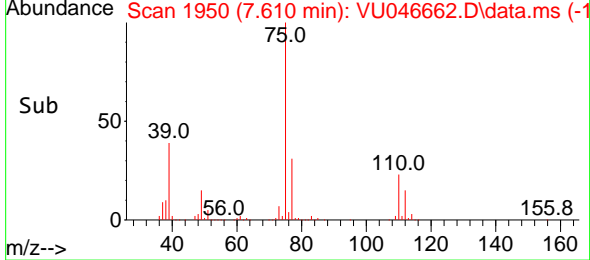
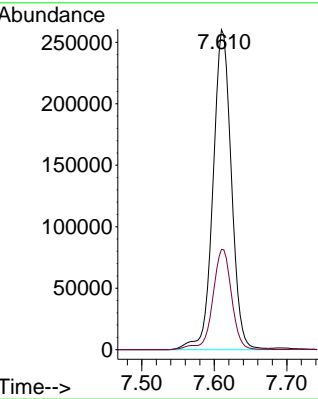
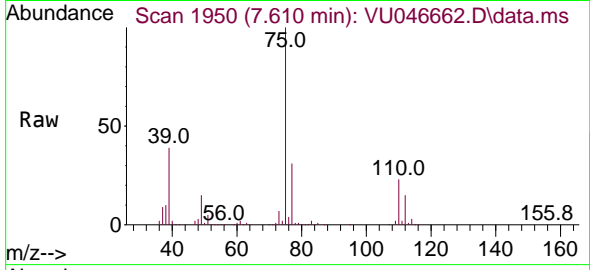




#39
 cis-1,3-Dichloropropene
 Concen: 205.051 ug/L
 RT: 7.610 min Scan# 1949
 Delta R.T. 0.003 min
 Lab File: VU046662.D
 Acq: 05 Jan 2022 13:43

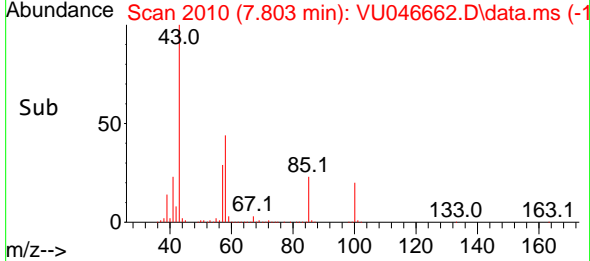
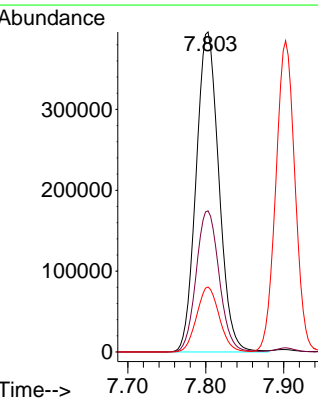
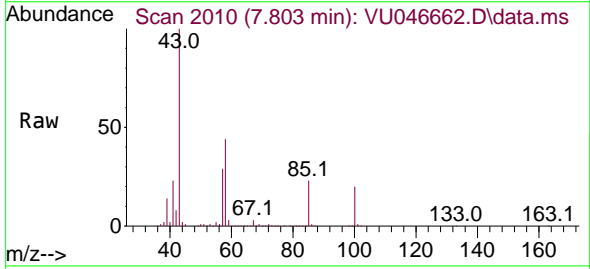
Instrument : MSVOA_U
 ClientSampleId : VSTD200041

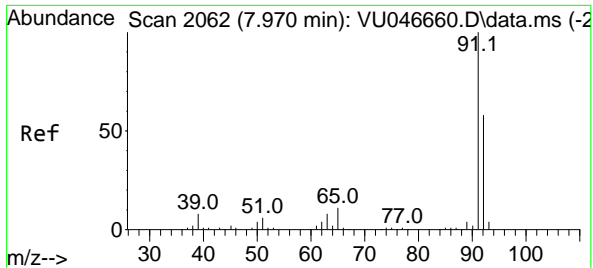
Tgt Ion: 75 Resp: 458010
 Ion Ratio Lower Upper
 75 100
 77 31.3 22.3 41.3



#40
 4-Methyl-2-pentanone
 Concen: 379.482 ug/L
 RT: 7.803 min Scan# 2010
 Delta R.T. 0.010 min
 Lab File: VU046662.D
 Acq: 05 Jan 2022 13:43

Tgt Ion: 43 Resp: 803922
 Ion Ratio Lower Upper
 43 100
 58 44.6 35.8 53.8
 100 20.2 15.7 23.5

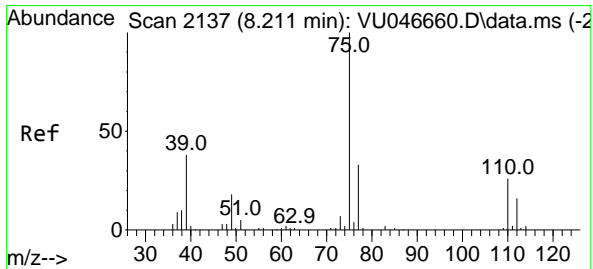
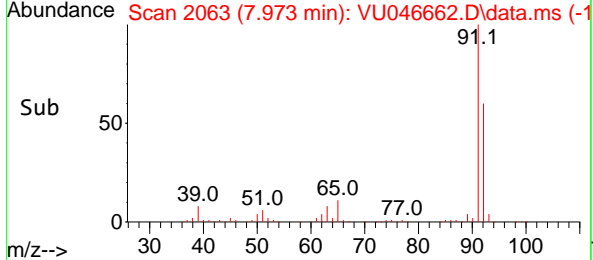
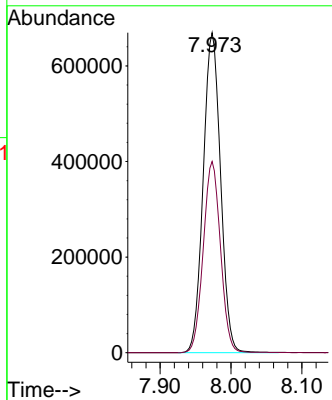
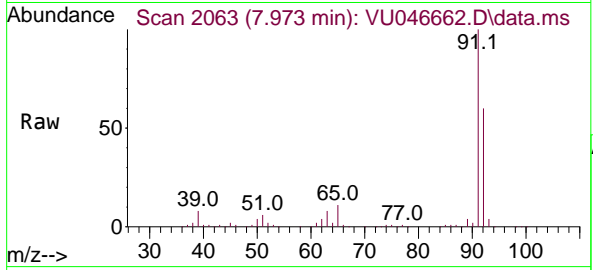




#42
 Toluene
 Concen: 189.039 ug/L
 RT: 7.973 min Scan# 2063
 Delta R.T. 0.003 min
 Lab File: VU046662.D
 Acq: 05 Jan 2022 13:43

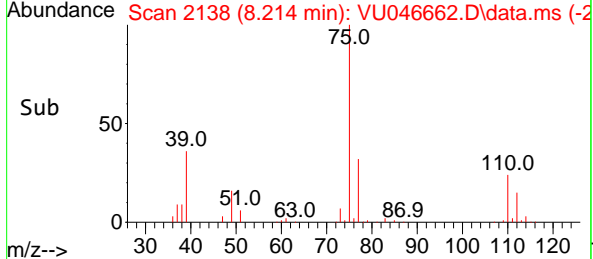
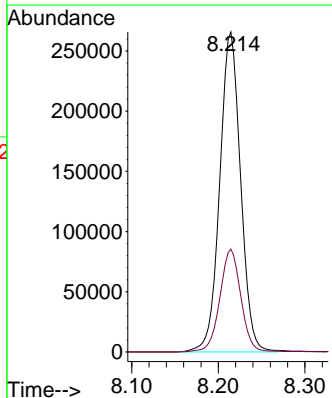
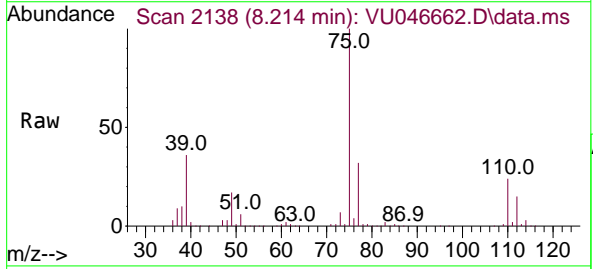
Instrument : MSVOA_U
 ClientSampleId : VSTD200041

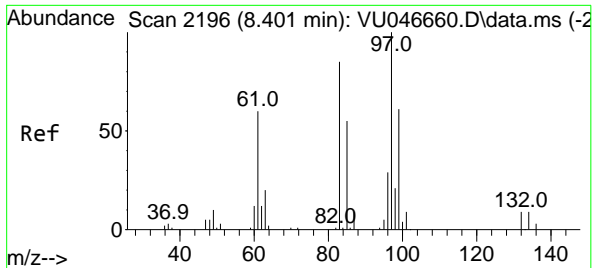
Tgt Ion: 91 Resp: 1137071
 Ion Ratio Lower Upper
 91 100
 92 59.8 40.4 75.0



#44
 trans-1,3-Dichloropropene
 Concen: 205.053 ug/L
 RT: 8.214 min Scan# 2138
 Delta R.T. 0.003 min
 Lab File: VU046662.D
 Acq: 05 Jan 2022 13:43

Tgt Ion: 75 Resp: 444604
 Ion Ratio Lower Upper
 75 100
 77 32.1 23.0 42.8



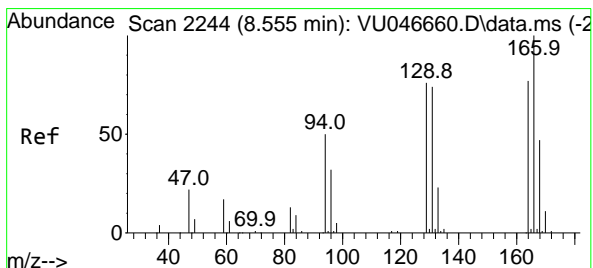
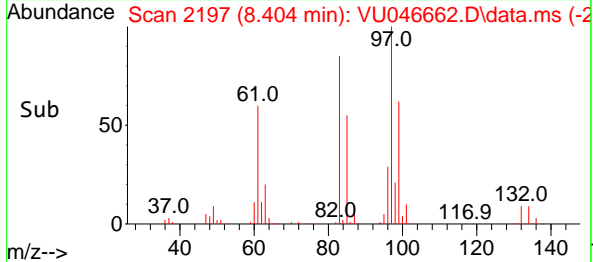
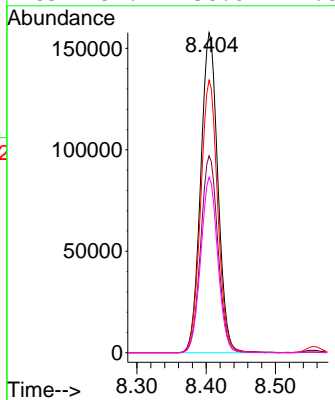
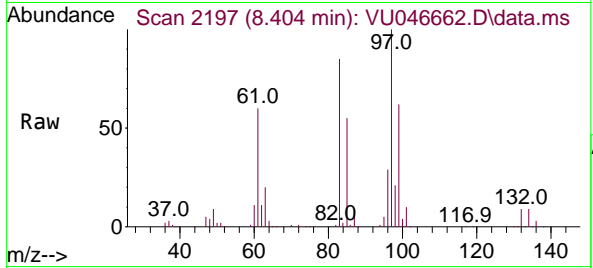


#45
 1,1,2-Trichloroethane
 Concen: 183.732 ug/L
 RT: 8.404 min Scan# 2196
 Delta R.T. 0.003 min
 Lab File: VU046662.D
 Acq: 05 Jan 2022 13:43

Instrument : MSVOA_U
 ClientSampleId : VSTD200041

Tgt Ion: 97 Resp: 271152

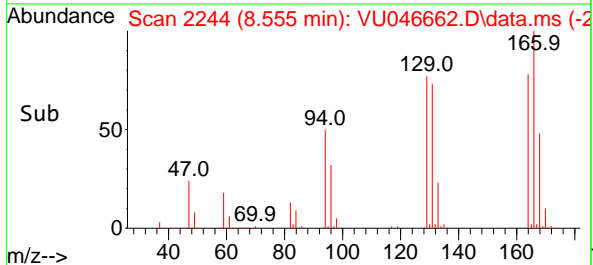
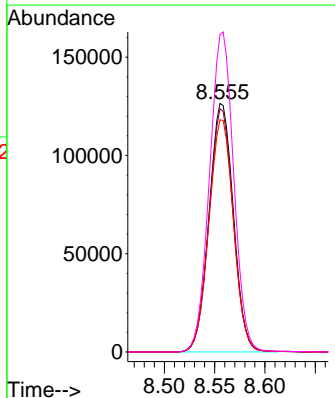
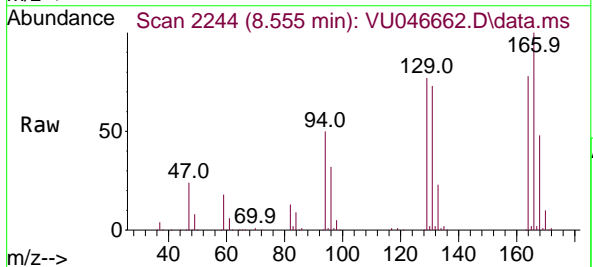
Ion	Ratio	Lower	Upper
97	100		
99	61.5	42.4	78.8
83	85.2	59.4	110.4
85	54.9	38.6	71.8

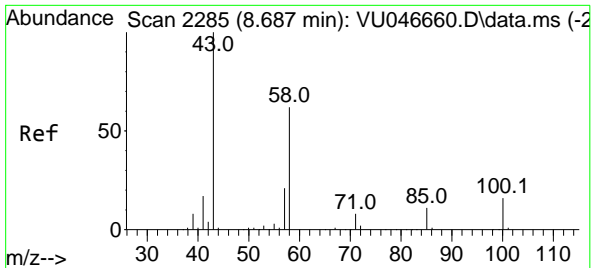


#46
 Tetrachloroethene
 Concen: 196.028 ug/L
 RT: 8.555 min Scan# 2244
 Delta R.T. 0.000 min
 Lab File: VU046662.D
 Acq: 05 Jan 2022 13:43

Tgt Ion: 164 Resp: 212994

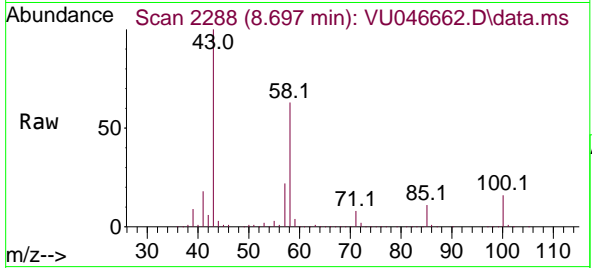
Ion	Ratio	Lower	Upper
164	100		
129	97.9	69.5	129.1
131	93.4	67.0	124.4
166	127.7	90.6	168.2





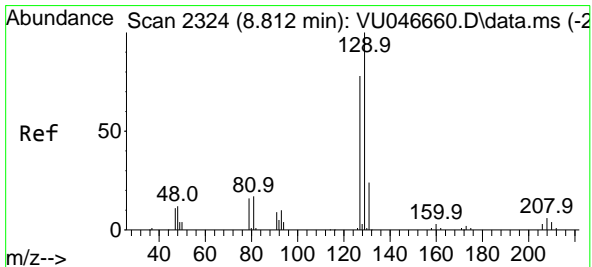
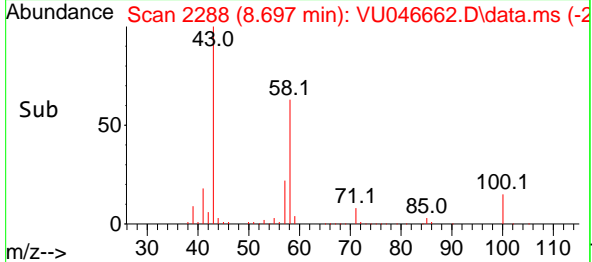
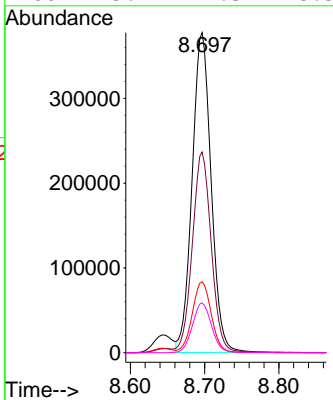
#48
 2-Hexanone
 Concen: 357.913 ug/L
 RT: 8.697 min Scan# 21
 Delta R.T. 0.010 min
 Lab File: VU046662.D
 Acq: 05 Jan 2022 13:43

Instrument :
 MSVOA_U
 ClientSampleId :
 VSTD200041

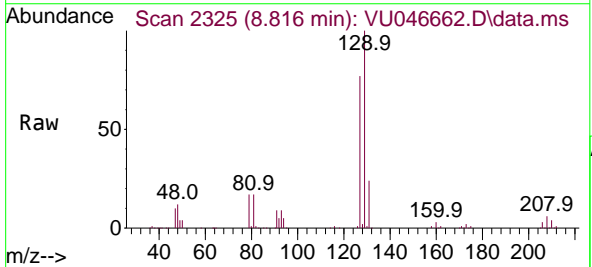


Tgt Ion: 43 Resp: 671807

Ion	Ratio	Lower	Upper
43	100		
58	62.8	49.4	74.2
57	22.3	17.5	26.3
100	15.7	12.3	18.5

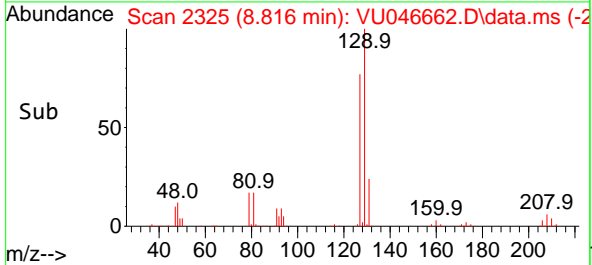
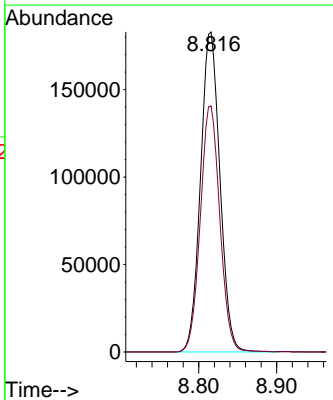


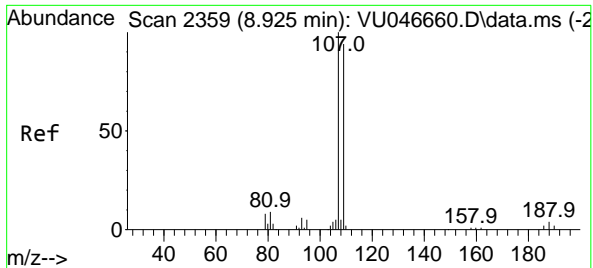
#49
 Dibromochloromethane
 Concen: 203.918 ug/L
 RT: 8.816 min Scan# 2325
 Delta R.T. 0.003 min
 Lab File: VU046662.D
 Acq: 05 Jan 2022 13:43



Tgt Ion: 129 Resp: 316377

Ion	Ratio	Lower	Upper
129	100		
127	76.9	54.5	101.3





#50
 1,2-Dibromoethane
 Concen: 191.902 ug/L
 RT: 8.928 min Scan# 21
 Delta R.T. 0.003 min
 Lab File: VU046662.D
 Acq: 05 Jan 2022 13:43

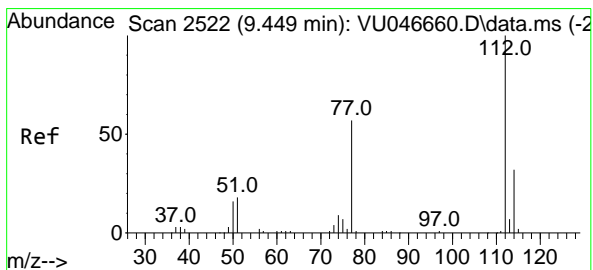
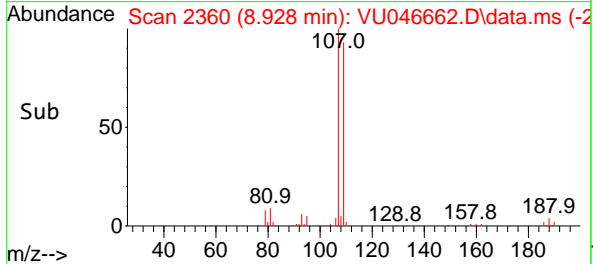
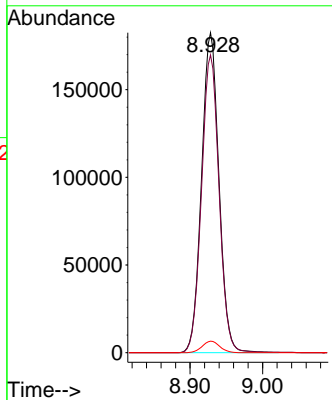
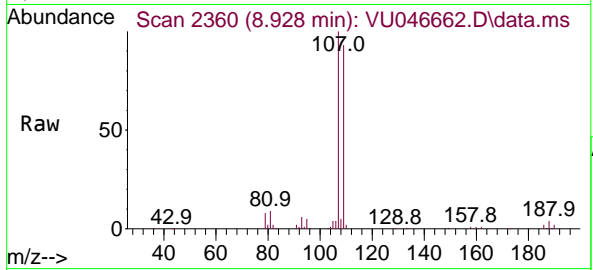
Instrument :

MSVOA_U

ClientSampleId :

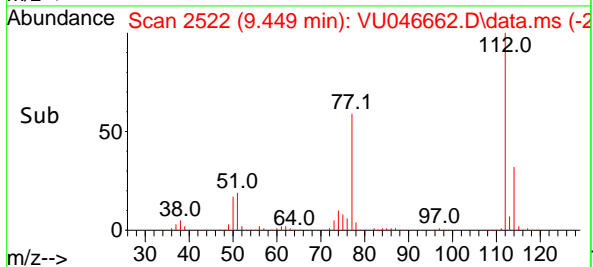
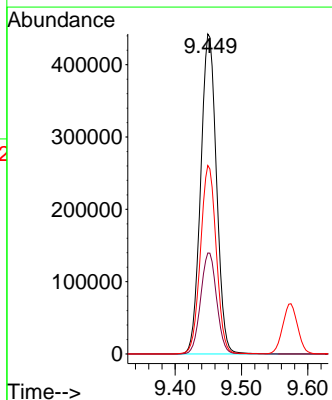
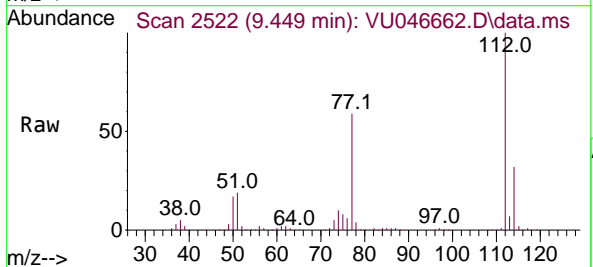
VSTD200041

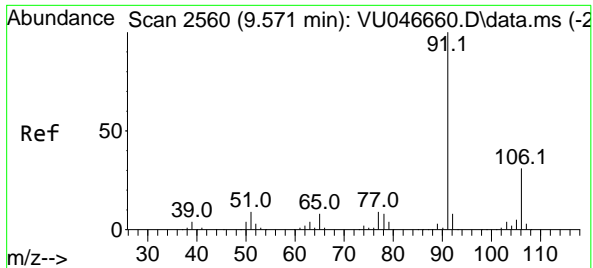
Tgt Ion:107 Resp: 304413
 Ion Ratio Lower Upper
 107 100
 109 93.1 65.6 121.8
 188 3.6 3.1 4.7



#51
 Chlorobenzene
 Concen: 187.822 ug/L
 RT: 9.449 min Scan# 2522
 Delta R.T. 0.000 min
 Lab File: VU046662.D
 Acq: 05 Jan 2022 13:43

Tgt Ion:112 Resp: 731093
 Ion Ratio Lower Upper
 112 100
 114 31.6 22.1 41.1
 77 58.9 46.5 69.7

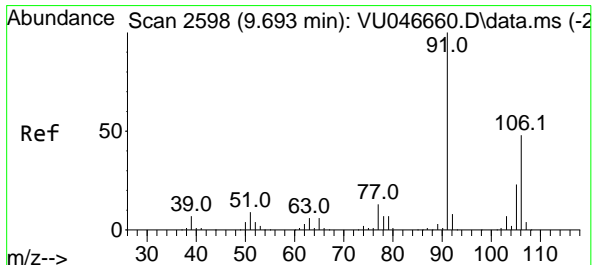
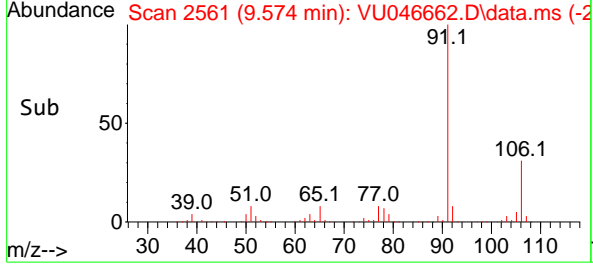
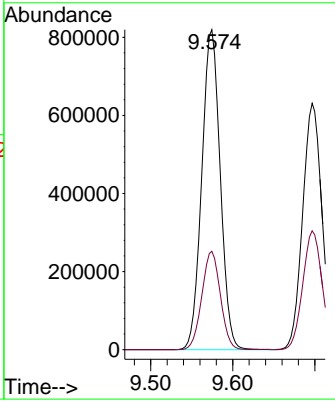
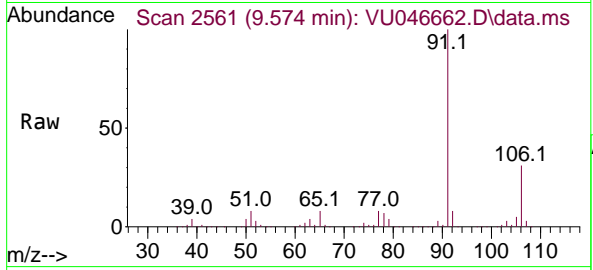




#52
 Ethylbenzene
 Concen: 199.089 ug/L
 RT: 9.574 min Scan# 2560
 Delta R.T. 0.003 min
 Lab File: VU046662.D
 Acq: 05 Jan 2022 13:43

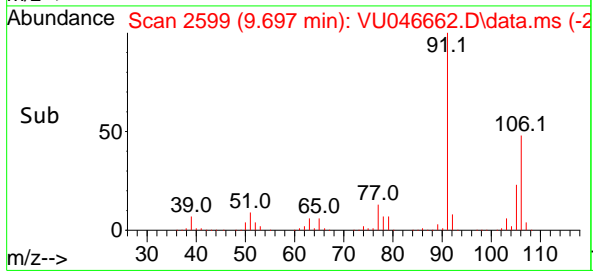
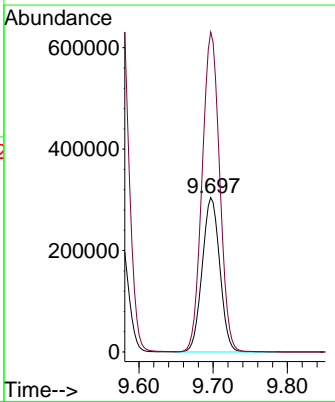
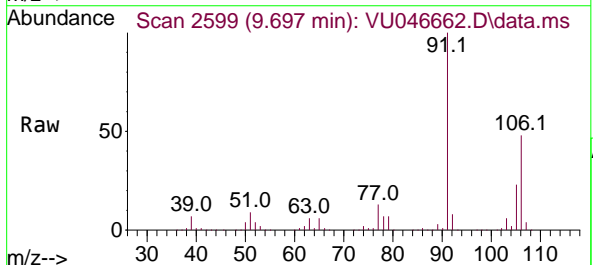
Instrument : MSVOA_U
 ClientSampleId : VSTD200041

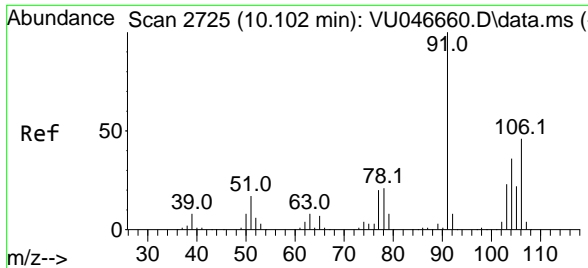
Tgt Ion: 91 Resp: 1279748
 Ion Ratio Lower Upper
 91 100
 106 30.7 21.8 40.4



#53
 m,p-Xylene
 Concen: 199.347 ug/L
 RT: 9.697 min Scan# 2599
 Delta R.T. 0.003 min
 Lab File: VU046662.D
 Acq: 05 Jan 2022 13:43

Tgt Ion: 106 Resp: 499775
 Ion Ratio Lower Upper
 106 100
 91 207.2 145.5 270.1

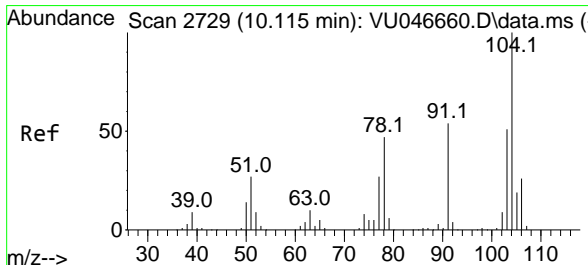
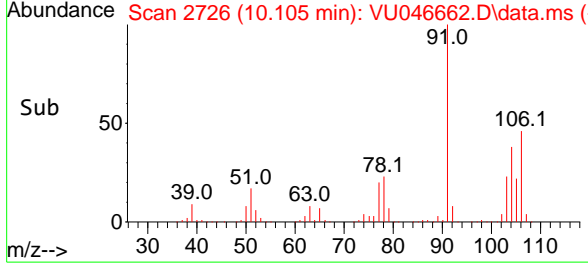
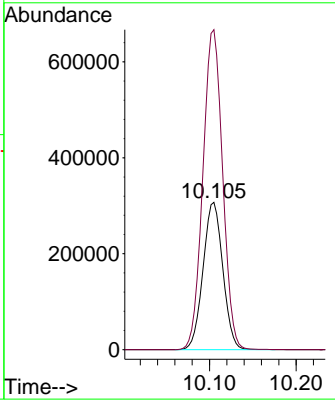
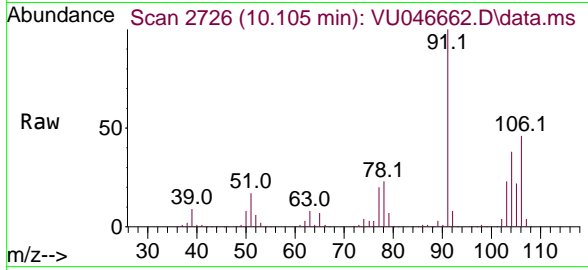




#54
 o-xylene
 Concen: 200.040 ug/L
 RT: 10.105 min Scan# 2730
 Delta R.T. 0.003 min
 Lab File: VU046662.D
 Acq: 05 Jan 2022 13:43

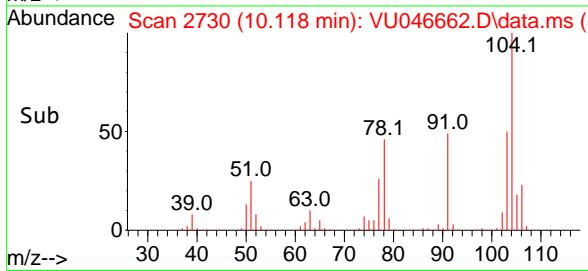
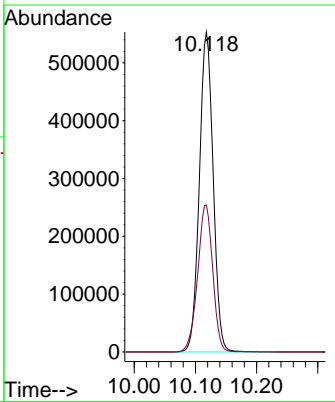
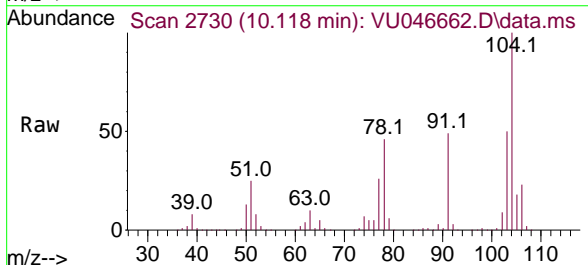
Instrument : MSVOA_U
 ClientSampleId : VSTD200041

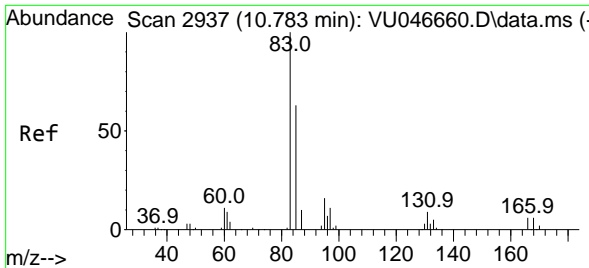
Tgt Ion:106 Resp: 486931
 Ion Ratio Lower Upper
 106 100
 91 217.2 152.0 282.2



#55
 Styrene
 Concen: 208.742 ug/L
 RT: 10.118 min Scan# 2730
 Delta R.T. 0.003 min
 Lab File: VU046662.D
 Acq: 05 Jan 2022 13:43

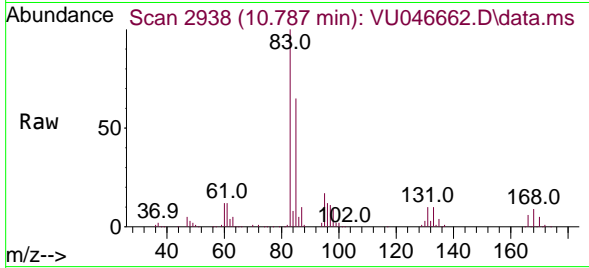
Tgt Ion:104 Resp: 867702
 Ion Ratio Lower Upper
 104 100
 78 46.0 32.6 60.6



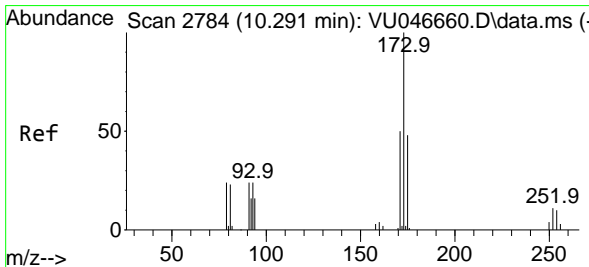
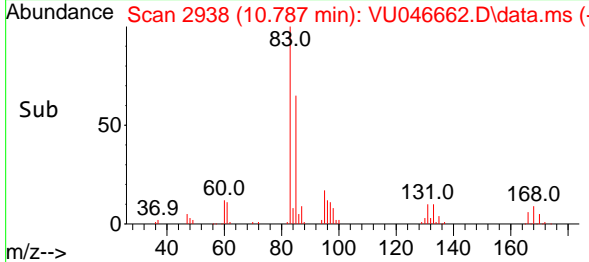
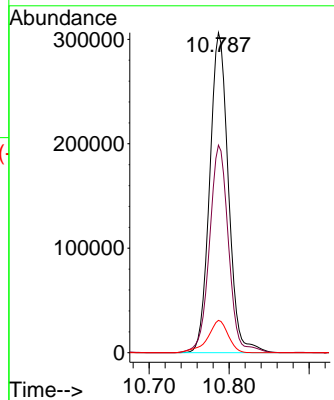


#57
 1,1,2-Tetrachloroethane
 Concen: 195.325 ug/L
 RT: 10.787 min Scan# 2937
 Delta R.T. 0.003 min
 Lab File: VU046662.D
 Acq: 05 Jan 2022 13:43

Instrument :
 MSVOA_U
 ClientSampleId :
 VSTD200041

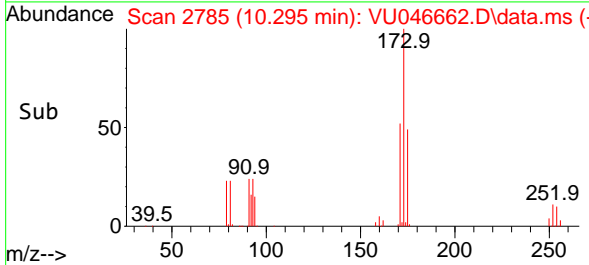
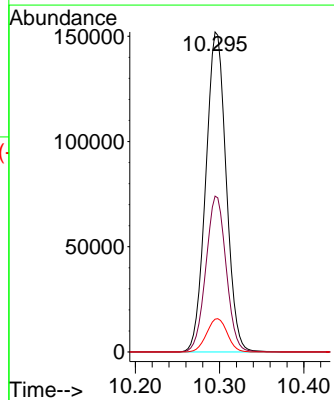
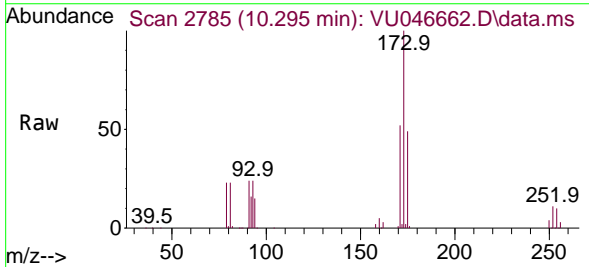


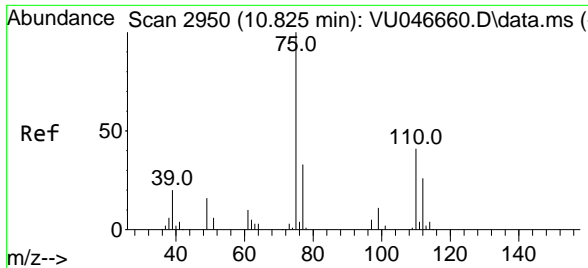
Tgt Ion: 83 Resp: 496930
 Ion Ratio Lower Upper
 83 100
 85 64.8 44.7 83.1
 131 10.1 7.8 11.6



#59
 Bromoform
 Concen: 201.362 ug/L
 RT: 10.295 min Scan# 2785
 Delta R.T. 0.003 min
 Lab File: VU046662.D
 Acq: 05 Jan 2022 13:43

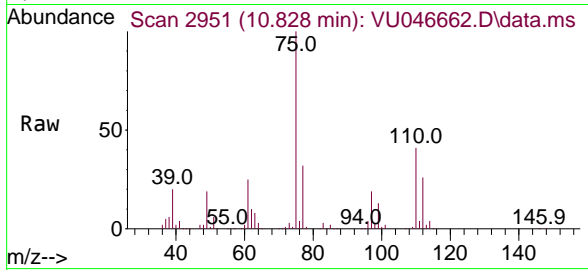
Tgt Ion: 173 Resp: 255933
 Ion Ratio Lower Upper
 173 100
 175 48.4 37.6 56.4
 254 10.5 8.1 12.1



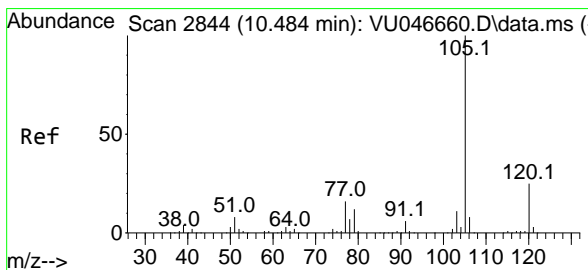
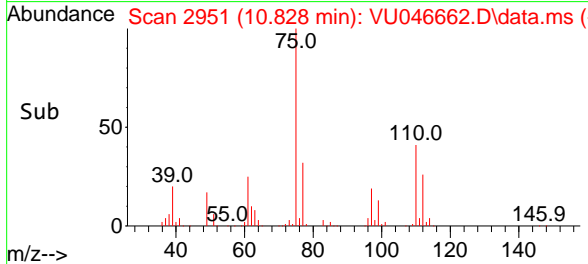
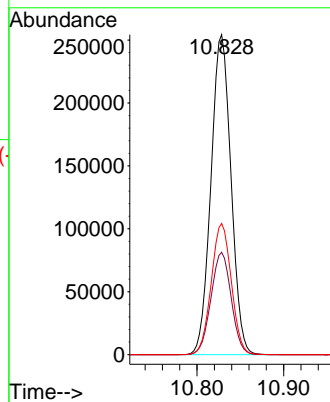


#60
 1,2,3-Trichloropropane
 Concen: 173.962 ug/L
 RT: 10.828 min Scan# 2950
 Delta R.T. 0.003 min
 Lab File: VU046662.D
 Acq: 05 Jan 2022 13:43

Instrument : MSVOA_U
 ClientSampleId : VSTD200041

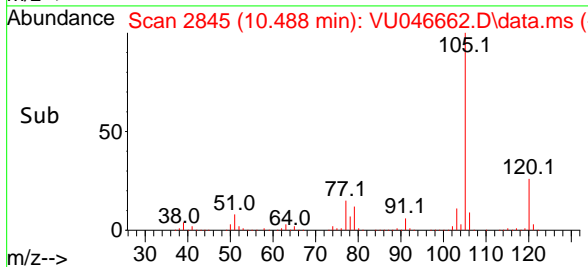
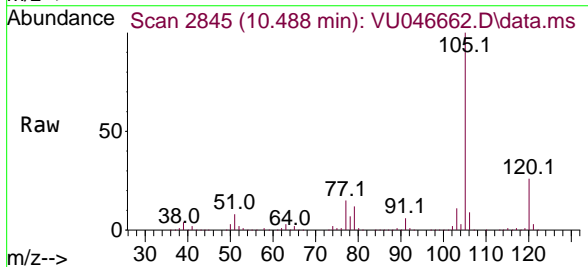
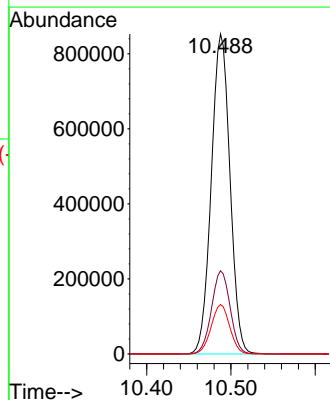


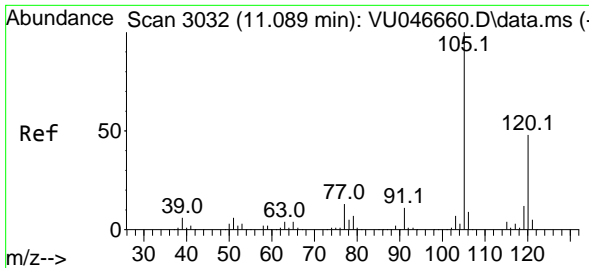
Tgt Ion: 75 Resp: 408678
 Ion Ratio Lower Upper
 75 100
 77 32.3 26.2 39.2
 110 41.1 32.5 48.7



#61
 Isopropylbenzene
 Concen: 189.744 ug/L
 RT: 10.488 min Scan# 2845
 Delta R.T. 0.003 min
 Lab File: VU046662.D
 Acq: 05 Jan 2022 13:43

Tgt Ion: 105 Resp: 1312935
 Ion Ratio Lower Upper
 105 100
 120 25.9 20.6 31.0
 77 15.4 12.6 18.8

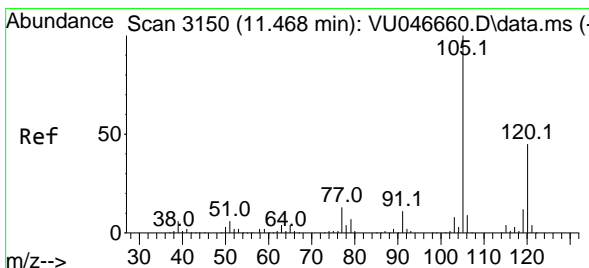
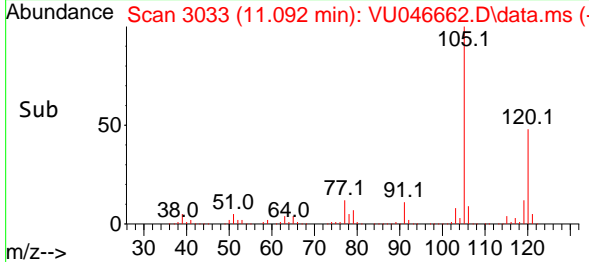
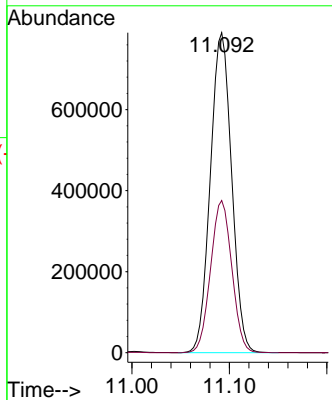
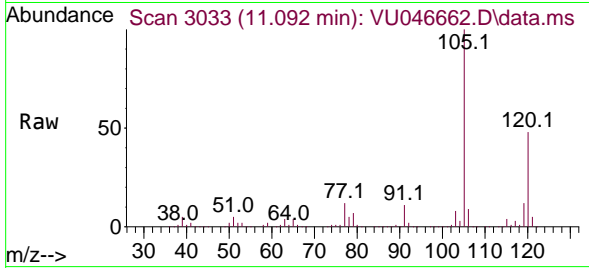




#62
 1,3,5-Trimethylbenzene
 Concen: 207.970 ug/L
 RT: 11.092 min Scan# 3032
 Delta R.T. 0.003 min
 Lab File: VU046662.D
 Acq: 05 Jan 2022 13:43

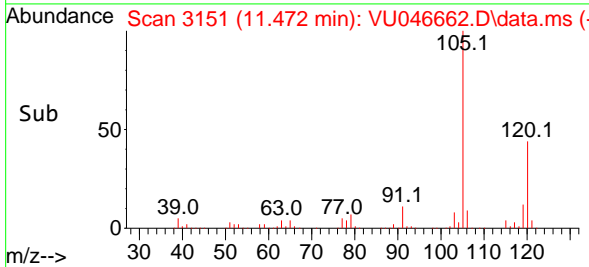
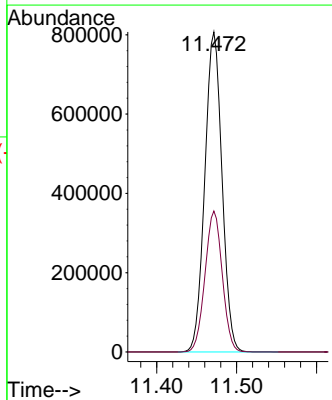
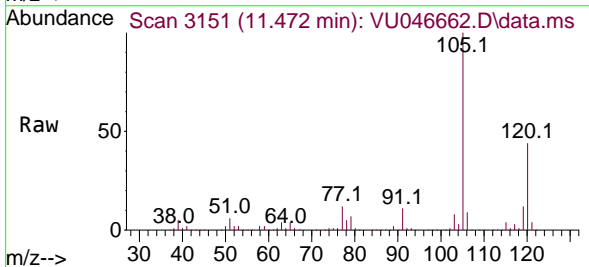
Instrument :
 MSVOA_U
 ClientSampleId :
 VSTD200041

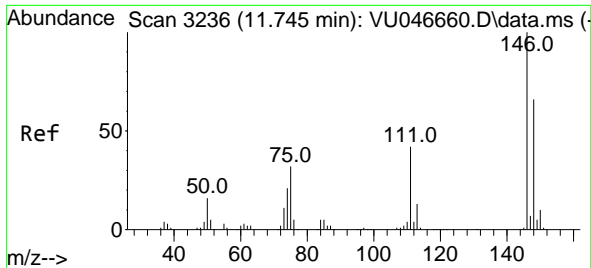
Tgt Ion:105 Resp: 1198856
 Ion Ratio Lower Upper
 105 100
 120 47.4 38.4 57.6



#63
 1,2,4-Trimethylbenzene
 Concen: 209.576 ug/L
 RT: 11.472 min Scan# 3151
 Delta R.T. 0.003 min
 Lab File: VU046662.D
 Acq: 05 Jan 2022 13:43

Tgt Ion:105 Resp: 1208041
 Ion Ratio Lower Upper
 105 100
 120 44.2 35.4 53.2



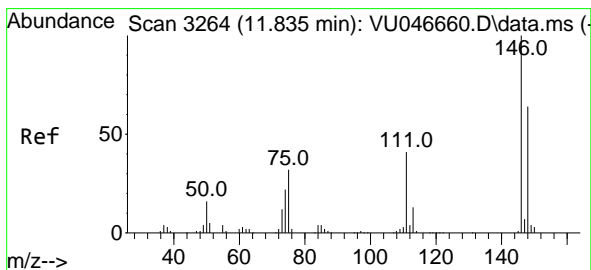
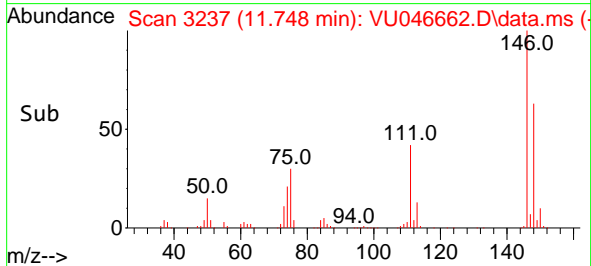
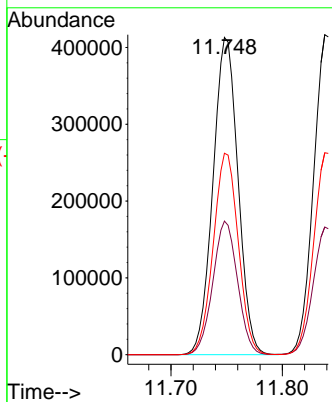
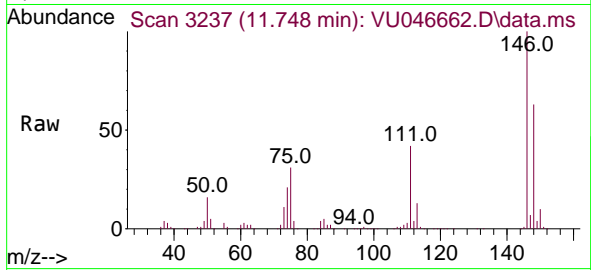


#64
 1,3-Dichlorobenzene
 Concen: 195.503 ug/L
 RT: 11.748 min Scan# 31
 Delta R.T. 0.003 min
 Lab File: VU046662.D
 Acq: 05 Jan 2022 13:43

Instrument :
 MSVOA_U
 ClientSampleId :
 VSTD200041

Tgt Ion:146 Resp: 645729

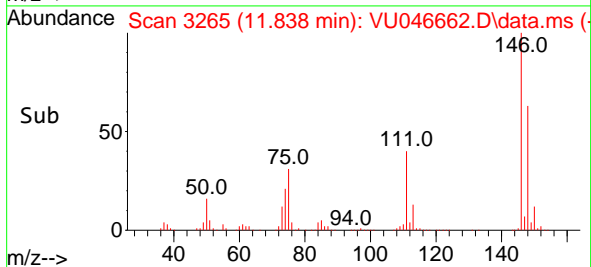
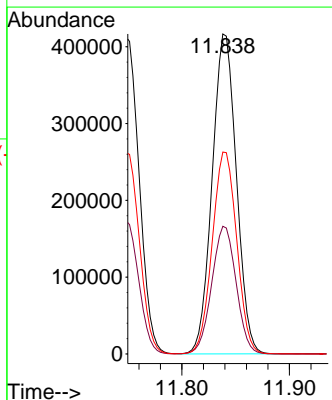
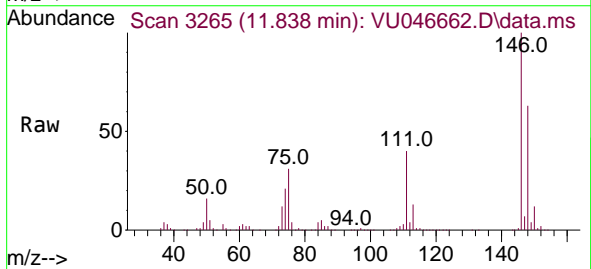
Ion	Ratio	Lower	Upper
146	100		
111	42.1	29.4	54.6
148	63.5	45.8	85.2

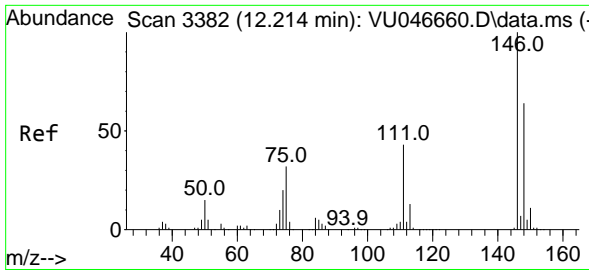


#65
 1,4-Dichlorobenzene
 Concen: 190.941 ug/L
 RT: 11.838 min Scan# 3265
 Delta R.T. 0.003 min
 Lab File: VU046662.D
 Acq: 05 Jan 2022 13:43

Tgt Ion:146 Resp: 652030

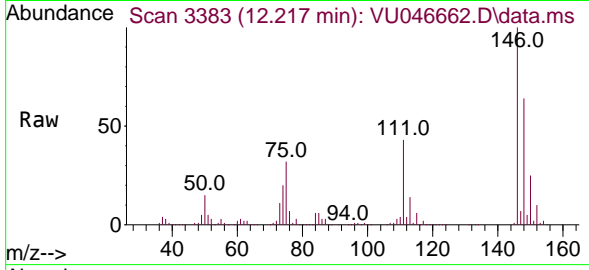
Ion	Ratio	Lower	Upper
146	100		
111	39.9	28.9	53.7
148	63.1	44.5	82.7



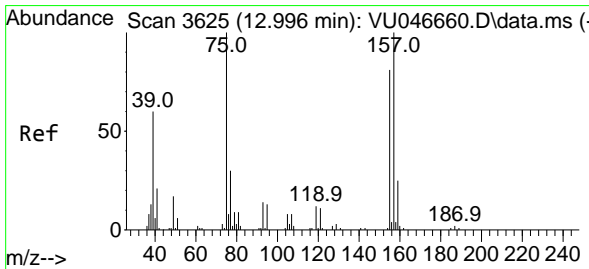
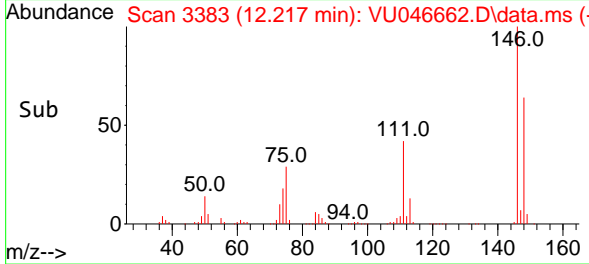
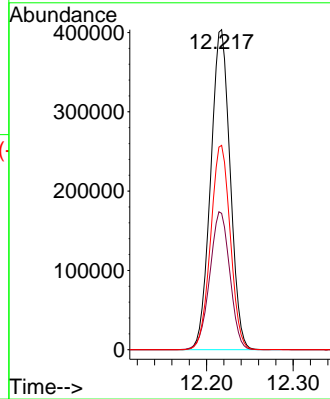


#67
 1,2-Dichlorobenzene
 Concen: 189.417 ug/L
 RT: 12.217 min Scan# 3111
 Delta R.T. 0.003 min
 Lab File: VU046662.D
 Acq: 05 Jan 2022 13:43

Instrument :
 MSVOA_U
 ClientSampleId :
 VSTD200041

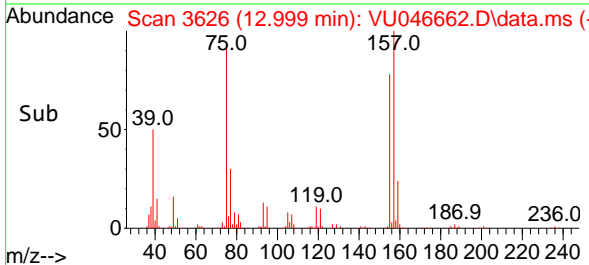
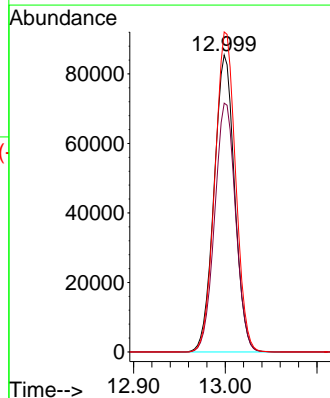
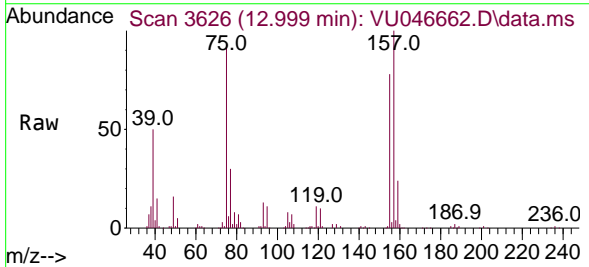


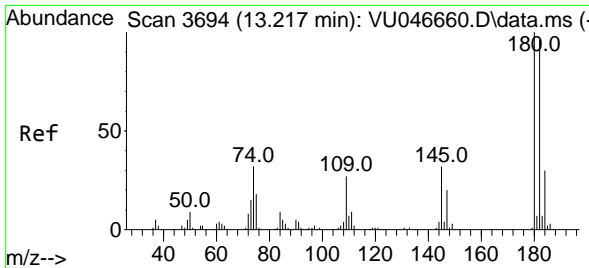
Tgt Ion:146 Resp: 630699
 Ion Ratio Lower Upper
 146 100
 111 42.6 34.2 51.4
 148 63.9 51.3 76.9



#68
 1,2-Dibromo-3-chloropropane
 Concen: 208.374 ug/L
 RT: 12.999 min Scan# 3626
 Delta R.T. 0.003 min
 Lab File: VU046662.D
 Acq: 05 Jan 2022 13:43

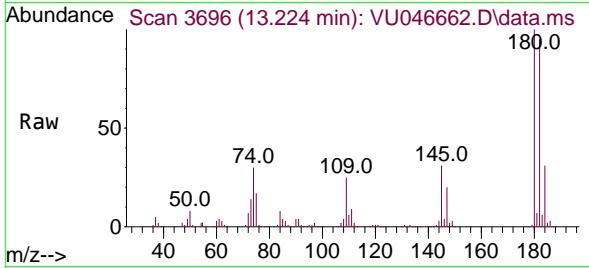
Tgt Ion: 75 Resp: 133358
 Ion Ratio Lower Upper
 75 100
 155 83.8 65.0 97.4
 157 107.7 79.7 119.5



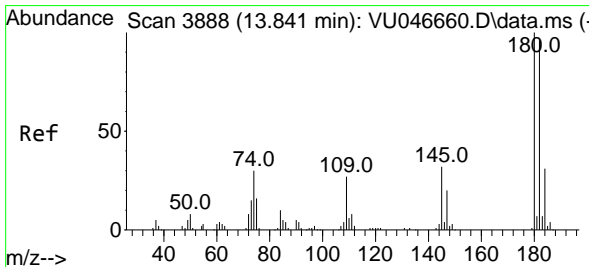
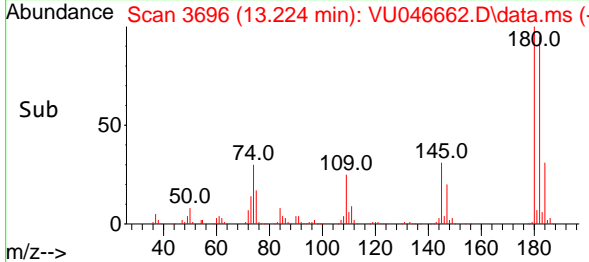
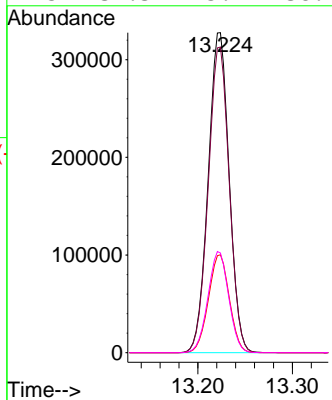


#69
 1,3,5-Trichlorobenzene
 Concen: 208.980 ug/L
 RT: 13.224 min Scan# 3696
 Delta R.T. 0.006 min
 Lab File: VU046662.D
 Acq: 05 Jan 2022 13:43

Instrument :
 MSVOA_U
 ClientSampleId :
 VSTD200041

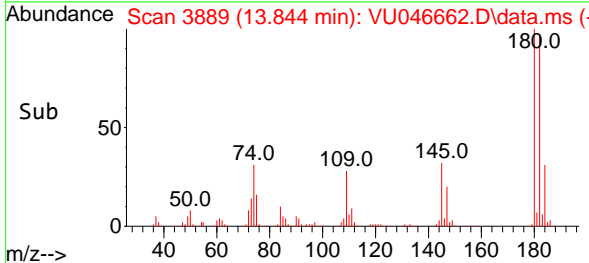
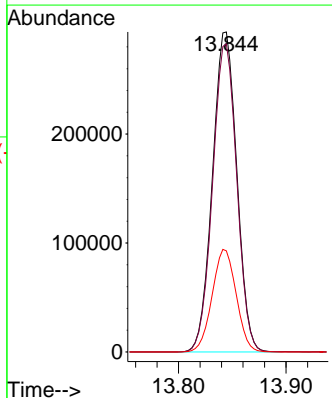
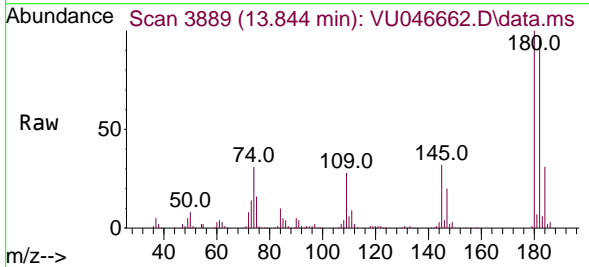


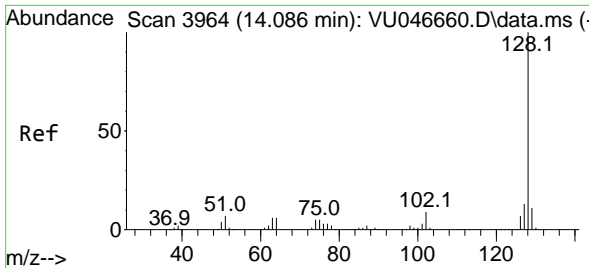
Tgt Ion:180 Resp: 505049
 Ion Ratio Lower Upper
 180 100
 182 95.7 77.0 115.6
 184 30.5 24.7 37.1
 145 31.3 25.4 38.2



#70
 1,2,4-trichlorobenzene
 Concen: 215.246 ug/L
 RT: 13.844 min Scan# 3889
 Delta R.T. 0.003 min
 Lab File: VU046662.D
 Acq: 05 Jan 2022 13:43

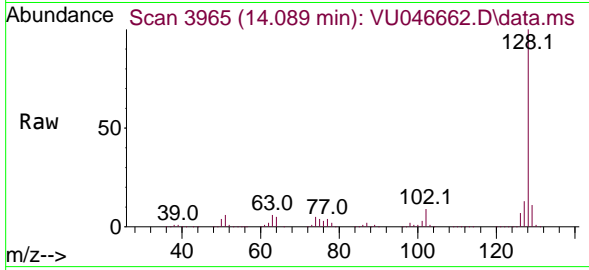
Tgt Ion:180 Resp: 462197
 Ion Ratio Lower Upper
 180 100
 182 95.5 76.6 114.8
 145 31.7 25.2 37.8



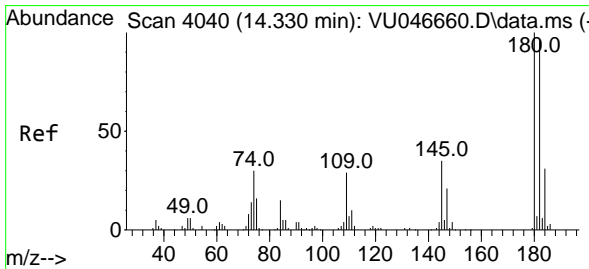
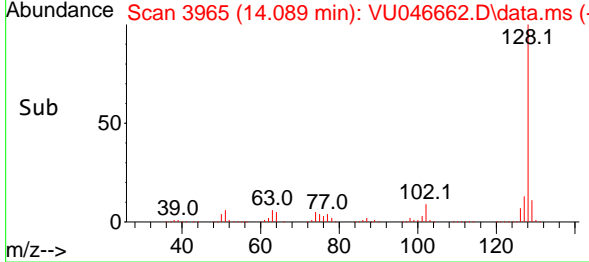
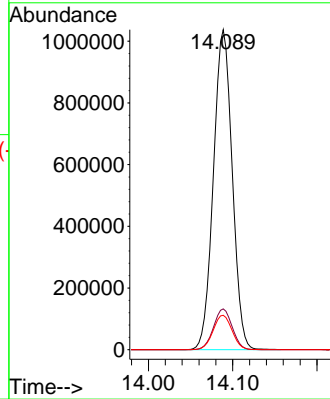


#71
 Naphthalene
 Concen: 217.128 ug/L
 RT: 14.089 min Scan# 3965
 Delta R.T. 0.003 min
 Lab File: VU046662.D
 Acq: 05 Jan 2022 13:43

Instrument :
 MSVOA_U
 ClientSampleId :
 VSTD200041



Tgt Ion:128 Resp: 1606853
 Ion Ratio Lower Upper
 128 100
 127 12.7 10.1 15.1
 129 10.9 8.8 13.2



#72
 1,2,3-Trichlorobenzene
 Concen: 206.501 ug/L
 RT: 14.333 min Scan# 4041
 Delta R.T. 0.003 min
 Lab File: VU046662.D
 Acq: 05 Jan 2022 13:43

Tgt Ion:180 Resp: 451237
 Ion Ratio Lower Upper
 180 100
 182 95.8 76.6 115.0
 145 33.5 27.4 41.2

