

Data Path : Z:\voasrv\HPCHEM1\MSVOA\_U\Data\VU010522\  
 Data File : VU046669.D  
 Acq On : 05 Jan 2022 17:59  
 Operator : SY/MD  
 Sample : N1009-07  
 Misc : 5.71g/5.0mL/100uL/5.0mL/MSVOA\_U/MEOH  
 ALS Vial : 13 Sample Multiplier: 1

Instrument :  
 MSVOA\_U  
 ClientSampleId :  
 BGLG3ME

Quant Time: Jan 06 03:04:28 2022  
 Quant Method : Z:\voasrv\HPCHEM1\MSVOA\_U\Method\SFAMULM010522WMA.M  
 Quant Title : VOC Analysis  
 QLast Update : Thu Jan 06 02:54:34 2022  
 Response via : Initial Calibration

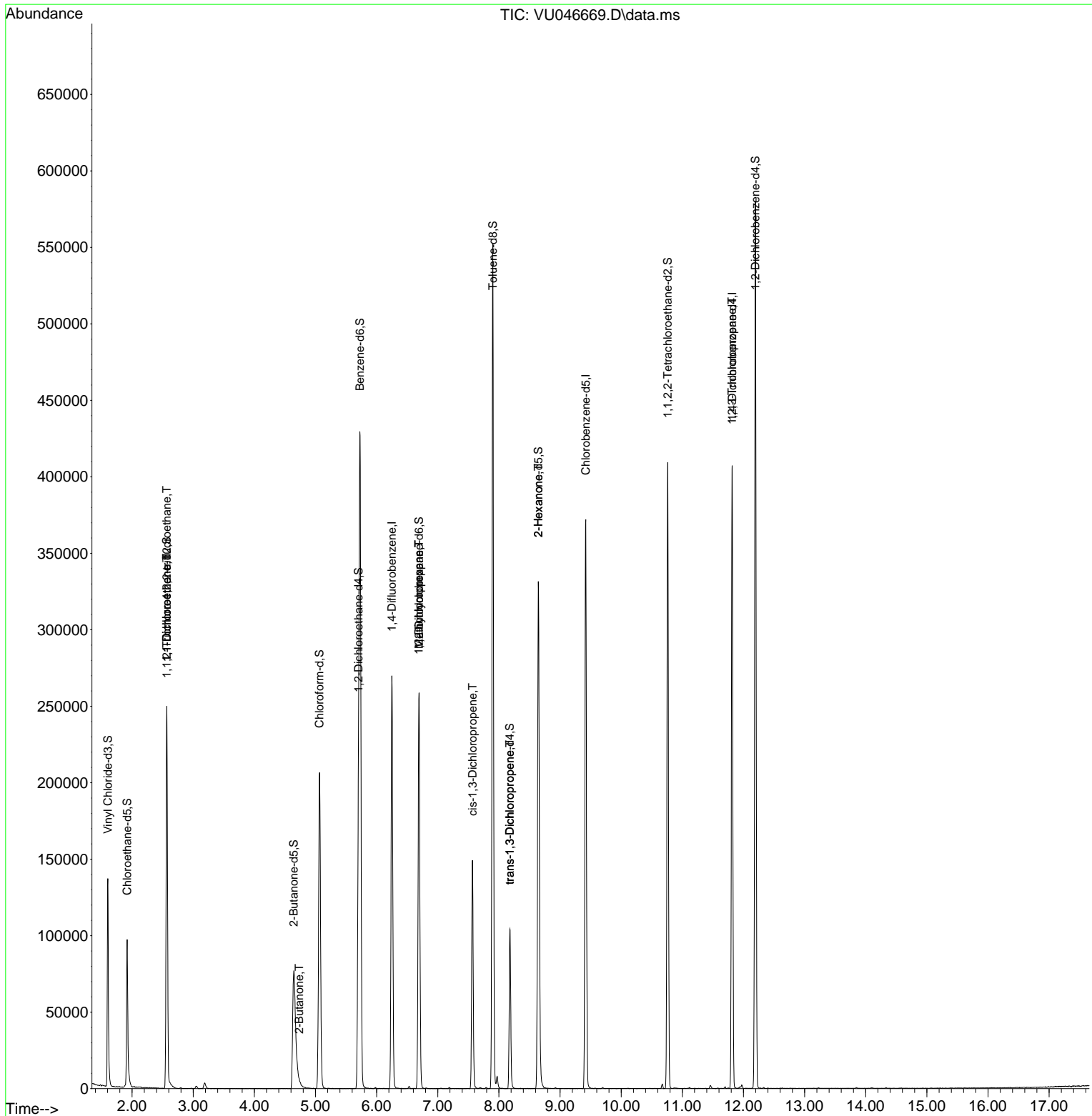
Compound	R.T.	QIon	Response	Conc	Units	Dev(Min)
Internal Standards						
1) 1,4-Difluorobenzene	6.250	114	219174	50.000	ug/L	0.00
28) Chlorobenzene-d5	9.420	117	215320	50.000	ug/L	0.00
58) 1,4-Dichlorobenzene-d4	11.816	152	109149	50.000	ug/L	0.00
System Monitoring Compounds						
4) Vinyl Chloride-d3	1.604	65	108989	56.986	ug/L	0.00
Spiked Amount	50.000	Range 60 - 135	Recovery =	113.980%		
7) Chloroethane-d5	1.919	69	81636	57.457	ug/L	0.00
Spiked Amount	50.000	Range 70 - 130	Recovery =	114.920%		
11) 1,1-Dichloroethene-d2	2.568	63	148290	45.587	ug/L	0.00
Spiked Amount	50.000	Range 60 - 125	Recovery =	91.180%		
21) 2-Butanone-d5	4.645	46	168041	120.047	ug/L	0.00
Spiked Amount	100.000	Range 40 - 130	Recovery =	120.050%		
24) Chloroform-d	5.067	84	195144	57.879	ug/L	0.00
Spiked Amount	50.000	Range 70 - 125	Recovery =	115.760%		
26) 1,2-Dichloroethane-d4	5.703	65	132437	61.936	ug/L	0.00
Spiked Amount	50.000	Range 70 - 125	Recovery =	123.880%		
32) Benzene-d6	5.729	84	402325	59.873	ug/L	0.00
Spiked Amount	50.000	Range 70 - 125	Recovery =	119.740%		
36) 1,2-Dichloropropane-d6	6.694	67	121398	59.210	ug/L	0.00
Spiked Amount	50.000	Range 70 - 120	Recovery =	118.420%		
41) Toluene-d8	7.899	98	365716	60.880	ug/L	0.00
Spiked Amount	50.000	Range 80 - 120	Recovery =	121.760%#		
43) trans-1,3-Dichloroprop...	8.179	79	62011	62.779	ug/L	0.00
Spiked Amount	50.000	Range 60 - 125	Recovery =	125.560%#		
47) 2-Hexanone-d5	8.645	63	147156	135.103	ug/L	0.00
Spiked Amount	100.000	Range 45 - 130	Recovery =	135.100%#		
56) 1,1,2,2-Tetrachloroeth...	10.761	84	195697	61.629	ug/L	0.00
Spiked Amount	50.000	Range 65 - 120	Recovery =	123.260%#		
66) 1,2-Dichlorobenzene-d4	12.195	152	150457	66.617	ug/L	0.00
Spiked Amount	50.000	Range 80 - 120	Recovery =	133.240%#		
Target Compounds						
10) 1,1,2-Trichloro-1,2,2-...	2.565	101	1402	0.909	ug/L #	20
12) 1,1-Dichloroethene	2.568	96	1259	0.867	ug/L #	1
22) 2-Butanone	4.732	43	1802	1.187	ug/L #	63
35) Methylcyclohexane	6.694	83	29841	11.439	ug/L #	21
37) 1,2-Dichloropropane	6.690	63	13236	8.077	ug/L #	86
39) cis-1,3-Dichloropropene	7.568	75	3814	1.512	ug/L #	65
44) trans-1,3-Dichloropropene	8.179	75	2909	1.189	ug/L	94
48) 2-Hexanone	8.645	43	14443	7.606	ug/L #	65
60) 1,2,3-Trichloropropane	11.812	75	12887	5.611	ug/L #	66

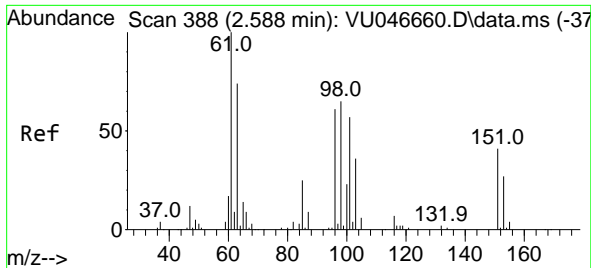
(#) = qualifier out of range (m) = manual integration (+) = signals summed

Data Path : Z:\voasrv\HPCHEM1\MSVOA\_U\Data\VU010522\  
 Data File : VU046669.D  
 Acq On : 05 Jan 2022 17:59  
 Operator : SY/MD  
 Sample : N1009-07  
 Misc : 5.71g/5.0mL/100uL/5.0mL/MSVOA\_U/MEOH  
 ALS Vial : 13 Sample Multiplier: 1

Instrument :  
 MSVOA\_U  
 ClientSampleId :  
 BGLG3ME

Quant Time: Jan 06 03:04:28 2022  
 Quant Method : Z:\voasrv\HPCHEM1\MSVOA\_U\Method\SFAMULM010522WMA.M  
 Quant Title : VOC Analysis  
 QLast Update : Thu Jan 06 02:54:34 2022  
 Response via : Initial Calibration

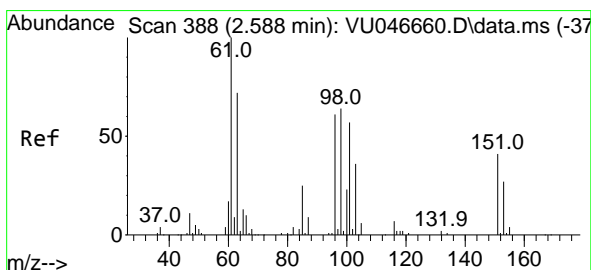
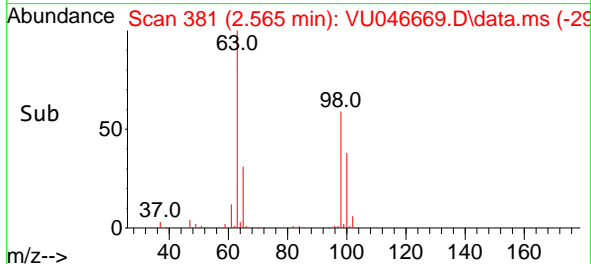
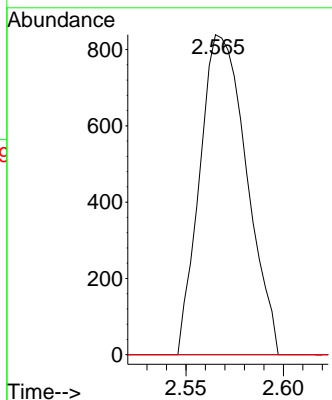
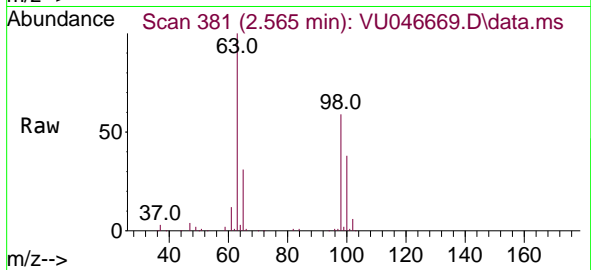




#10  
 1,1,2-Trichloro-1,2,2-trifluoroethane  
 Concen: 0.909 ug/L  
 RT: 2.565 min Scan# 381  
 Delta R.T. -0.022 min  
 Lab File: VU046669.D  
 Acq: 05 Jan 2022 17:59

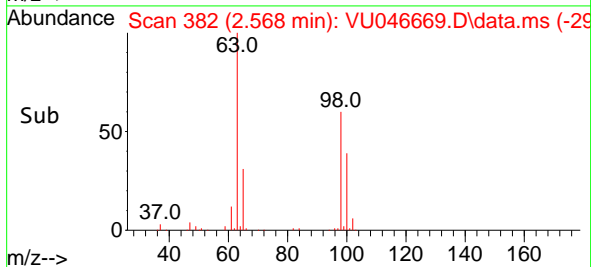
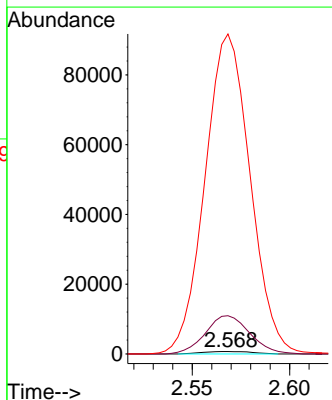
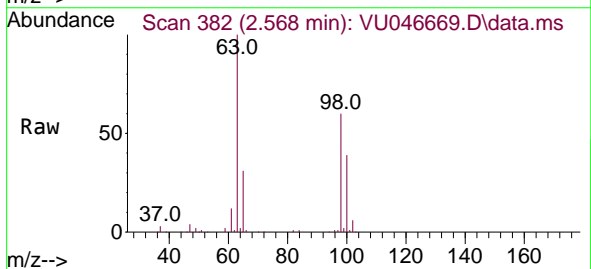
Instrument :  
 MSVOA\_U  
 ClientSampleId :  
 BGLG3ME

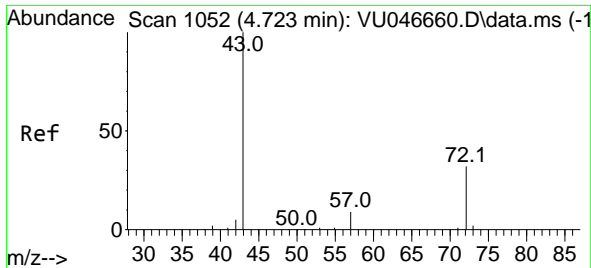
Tgt Ion:101 Resp: 1402  
 Ion Ratio Lower Upper  
 101 100  
 85 0.0 34.9 52.3#  
 151 0.0 58.3 87.5#



#12  
 1,1-Dichloroethene  
 Concen: 0.867 ug/L  
 RT: 2.568 min Scan# 382  
 Delta R.T. -0.019 min  
 Lab File: VU046669.D  
 Acq: 05 Jan 2022 17:59

Tgt Ion: 96 Resp: 1259  
 Ion Ratio Lower Upper  
 96 100  
 61 1615.0 114.9 213.3#  
 63 13531.6 86.0 159.8#

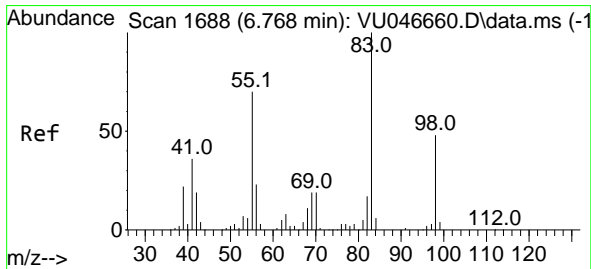
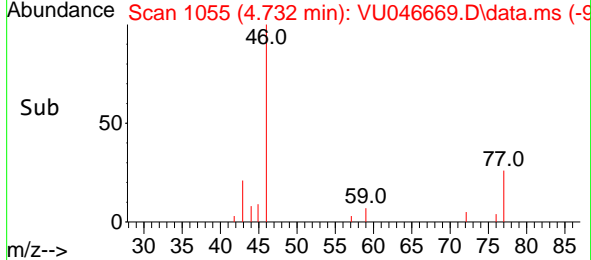
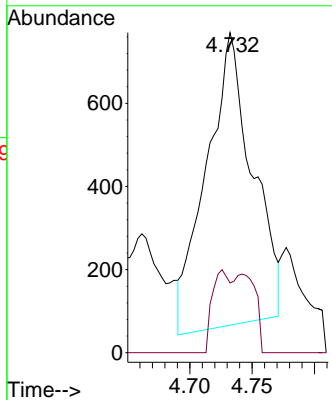
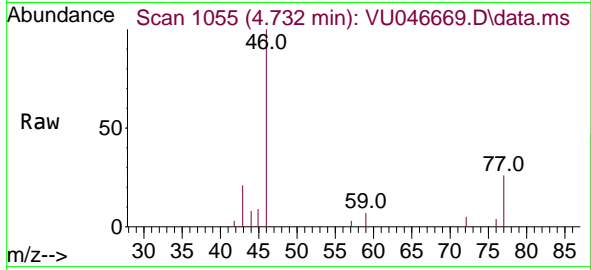




#22  
 2-Butanone  
 Concen: 1.187 ug/L  
 RT: 4.732 min Scan# 1055  
 Delta R.T. 0.010 min  
 Lab File: VU046669.D  
 Acq: 05 Jan 2022 17:59

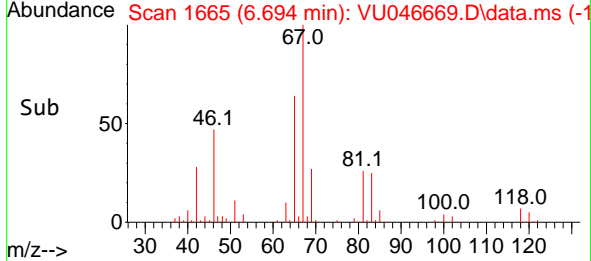
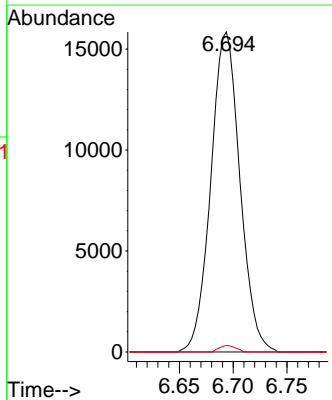
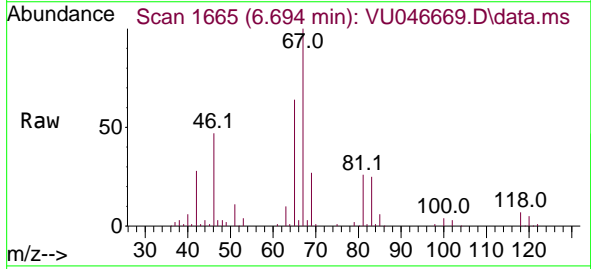
Instrument : MSVOA\_U  
 ClientSampleId : BGLG3ME

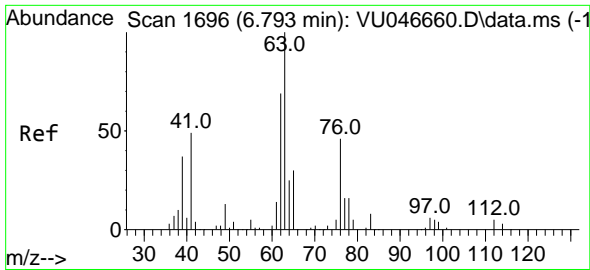
Tgt Ion: 43 Resp: 1802  
 Ion Ratio Lower Upper  
 43 100  
 72 10.9 15.6 46.8#



#35  
 Methylcyclohexane  
 Concen: 11.439 ug/L  
 RT: 6.694 min Scan# 1665  
 Delta R.T. -0.074 min  
 Lab File: VU046669.D  
 Acq: 05 Jan 2022 17:59

Tgt Ion: 83 Resp: 29841  
 Ion Ratio Lower Upper  
 83 100  
 55 0.0 56.6 85.0#  
 98 1.1 38.4 57.6#

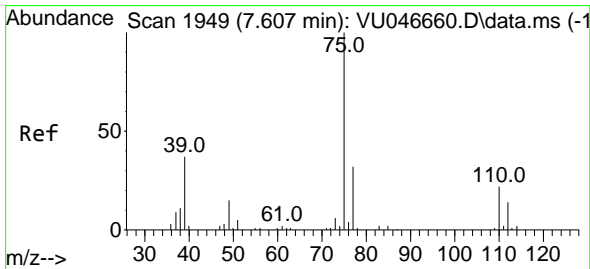
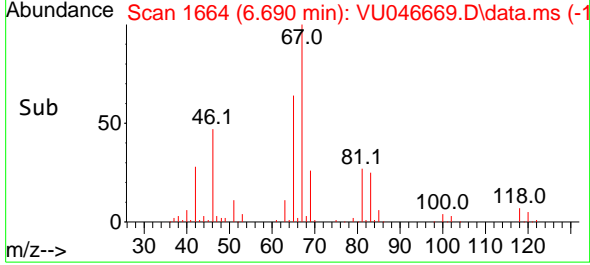
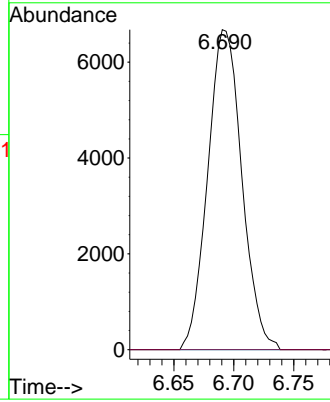
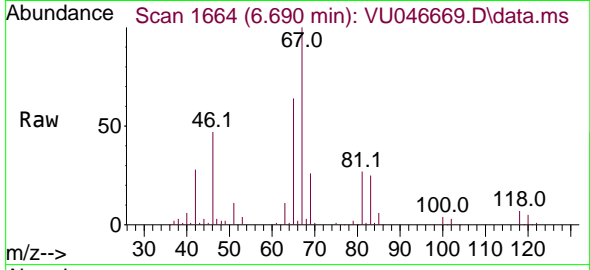




#37  
 1,2-Dichloropropane  
 Concen: 8.077 ug/L  
 RT: 6.690 min Scan# 1696  
 Delta R.T. -0.103 min  
 Lab File: VU046669.D  
 Acq: 05 Jan 2022 17:59

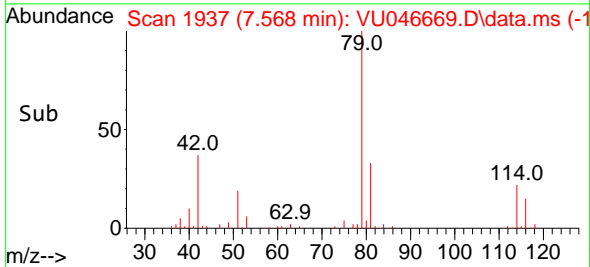
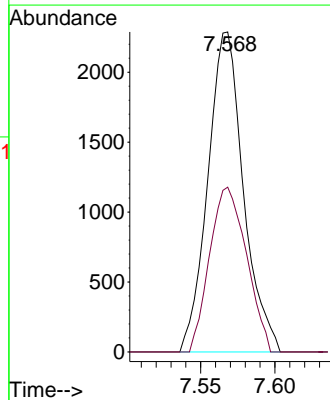
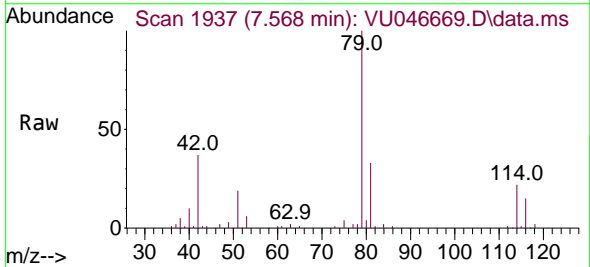
Instrument : MSVOA\_U  
 ClientSampleId : BGLG3ME

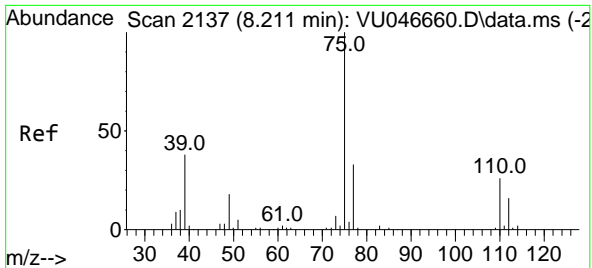
Tgt Ion: 63 Resp: 13236  
 Ion Ratio Lower Upper  
 63 100  
 112 0.0 3.7 5.5#



#39  
 cis-1,3-Dichloropropene  
 Concen: 1.512 ug/L  
 RT: 7.568 min Scan# 1937  
 Delta R.T. -0.039 min  
 Lab File: VU046669.D  
 Acq: 05 Jan 2022 17:59

Tgt Ion: 75 Resp: 3814  
 Ion Ratio Lower Upper  
 75 100  
 77 51.5 22.3 41.3#

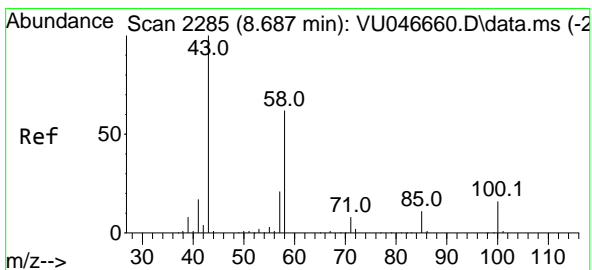
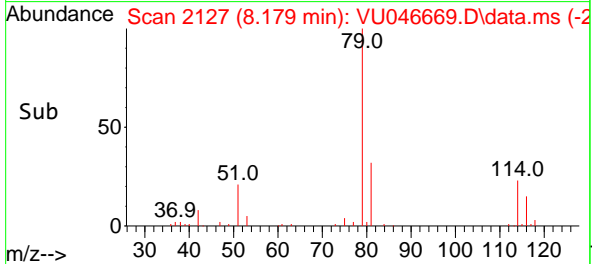
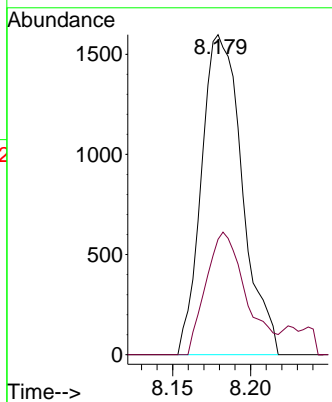
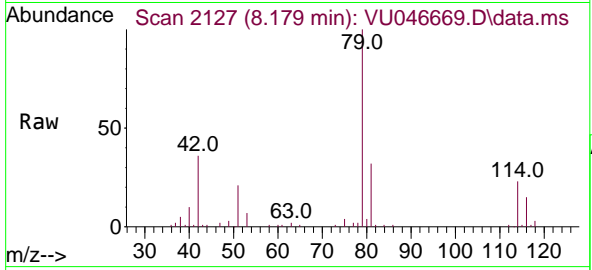




#44  
 trans-1,3-Dichloropropene  
 Concen: 1.189 ug/L  
 RT: 8.179 min Scan# 2137  
 Delta R.T. -0.032 min  
 Lab File: VU046669.D  
 Acq: 05 Jan 2022 17:59

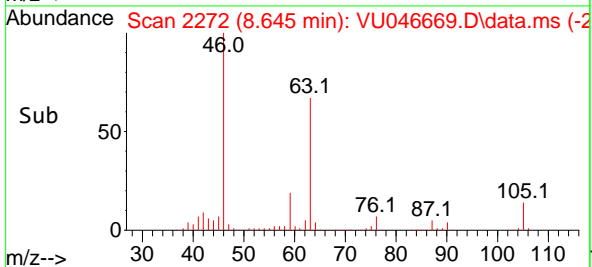
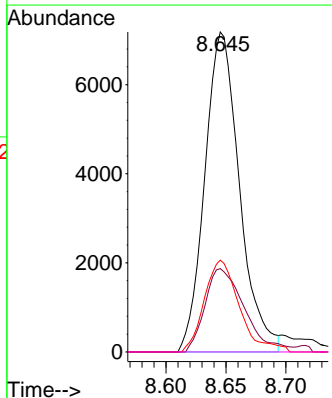
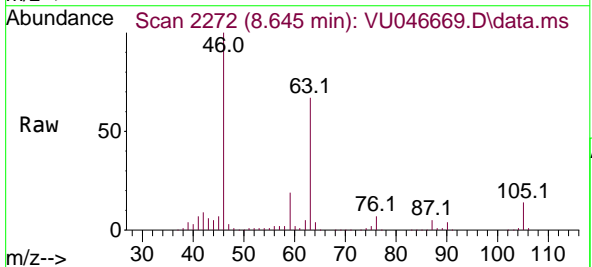
Instrument : MSVOA\_U  
 ClientSampleId : BGLG3ME

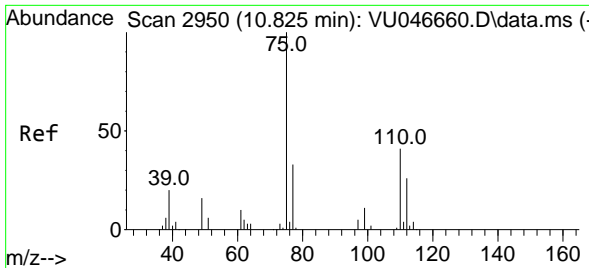
Tgt Ion: 75 Resp: 2909  
 Ion Ratio Lower Upper  
 75 100  
 77 36.0 23.0 42.8



#48  
 2-Hexanone  
 Concen: 7.606 ug/L  
 RT: 8.645 min Scan# 2272  
 Delta R.T. -0.042 min  
 Lab File: VU046669.D  
 Acq: 05 Jan 2022 17:59

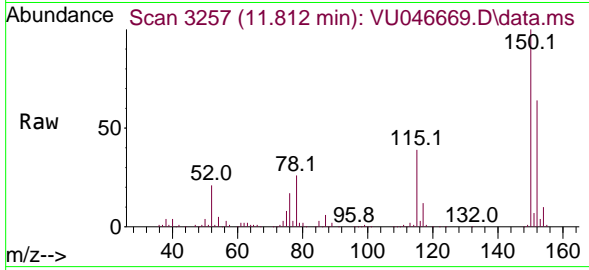
Tgt Ion: 43 Resp: 14443  
 Ion Ratio Lower Upper  
 43 100  
 58 29.7 49.4 74.2#  
 57 28.9 17.5 26.3#  
 100 0.0 12.3 18.5#





#60  
 1,2,3-Trichloropropane  
 Concen: 5.611 ug/L  
 RT: 11.812 min Scan# 31  
 Delta R.T. 0.987 min  
 Lab File: VU046669.D  
 Acq: 05 Jan 2022 17:59

Instrument :  
 MSVOA\_U  
 ClientSampleId :  
 BGLG3ME



Tgt Ion: 75 Resp: 12887

Ion	Ratio	Lower	Upper
75	100		
77	33.0	26.2	39.2
110	2.7	32.5	48.7#

