

Data File : VU029076.D
 Acq On : 07 Jan 2019 23:05
 Operator : MD/SY
 Sample : K1051-12
 Misc : 6.32g/10mL/100uL/5.0mL/MSVOA_U/MEOH
 ALS Vial : 33 Sample Multiplier: 1

Instrument :
 MSVOA_U
 ClientSampleId :
 BE9Y0

Quant Time: Jan 08 03:18:43 2019
 Quant Method : Z:\VOASRV\HPCHEM1\MSVOA_U\METHOD\SOMULM122018WMA.M
 Quant Title : VOC Analysis
 QLast Update : Tue Jan 08 03:12:02 2019
 Response via : Initial Calibration

Internal Standards	R.T.	QIon	Response	Conc	Units	Dev(Min)
1) 1,4-Difluorobenzene	5.88	114	227330	50.00	ug/L	0.00
28) Chlorobenzene-d5	9.09	117	226716	50.00	ug/L	0.00
60) 1,4-Dichlorobenzene-d4	11.48	152	101892	50.00	ug/L	0.00

System Monitoring Compounds

4) Vinyl Chloride-d3	1.40	65	65102	35.72	ug/L	0.00
Spiked Amount	50.000	Range	60 - 135	Recovery	=	71.44%
7) Chloroethane-d5	1.64	69	40343	28.66	ug/L	-0.03
Spiked Amount	50.000	Range	70 - 130	Recovery	=	57.32%#
11) 1,1-Dichloroethene-d2	2.22	63	86624	28.26	ug/L	-0.05
Spiked Amount	50.000	Range	60 - 125	Recovery	=	56.52%#
21) 2-Butanone-d5	4.20	46	105303	82.47	ug/L	0.02
Spiked Amount	100.000	Range	40 - 130	Recovery	=	82.47%
24) Chloroform-d	4.64	84	111596	38.94	ug/L	0.00
Spiked Amount	50.000	Range	70 - 125	Recovery	=	77.88%
26) 1,2-Dichloroethane-d4	5.30	65	72101	40.81	ug/L	0.00
Spiked Amount	50.000	Range	70 - 125	Recovery	=	81.62%
32) Benzene-d6	5.33	84	242164	37.81	ug/L	0.00
Spiked Amount	50.000	Range	70 - 125	Recovery	=	75.62%
36) 1,2-Dichloropropane-d6	6.33	67	85259	39.18	ug/L	0.00
Spiked Amount	50.000	Range	70 - 120	Recovery	=	78.36%
41) Toluene-d8	7.56	98	213181	36.73	ug/L	0.00
Spiked Amount	50.000	Range	80 - 120	Recovery	=	73.46%#
43) trans-1,3-Dichloropropene-	7.85	79	36032	36.96	ug/L	0.00
Spiked Amount	50.000	Range	60 - 125	Recovery	=	73.92%
47) 2-Hexanone-d5	8.33	63	81976	79.32	ug/L	0.02
Spiked Amount	100.000	Range	45 - 130	Recovery	=	79.32%
57) 1,1,2,2-Tetrachloroethane-	10.44	84	130802	43.33	ug/L	0.00
Spiked Amount	50.000	Range	65 - 120	Recovery	=	86.66%
64) 1,2-Dichlorobenzene-d4	11.86	152	84453	40.98	ug/L	0.00
Spiked Amount	50.000	Range	80 - 120	Recovery	=	81.96%

Target Compounds

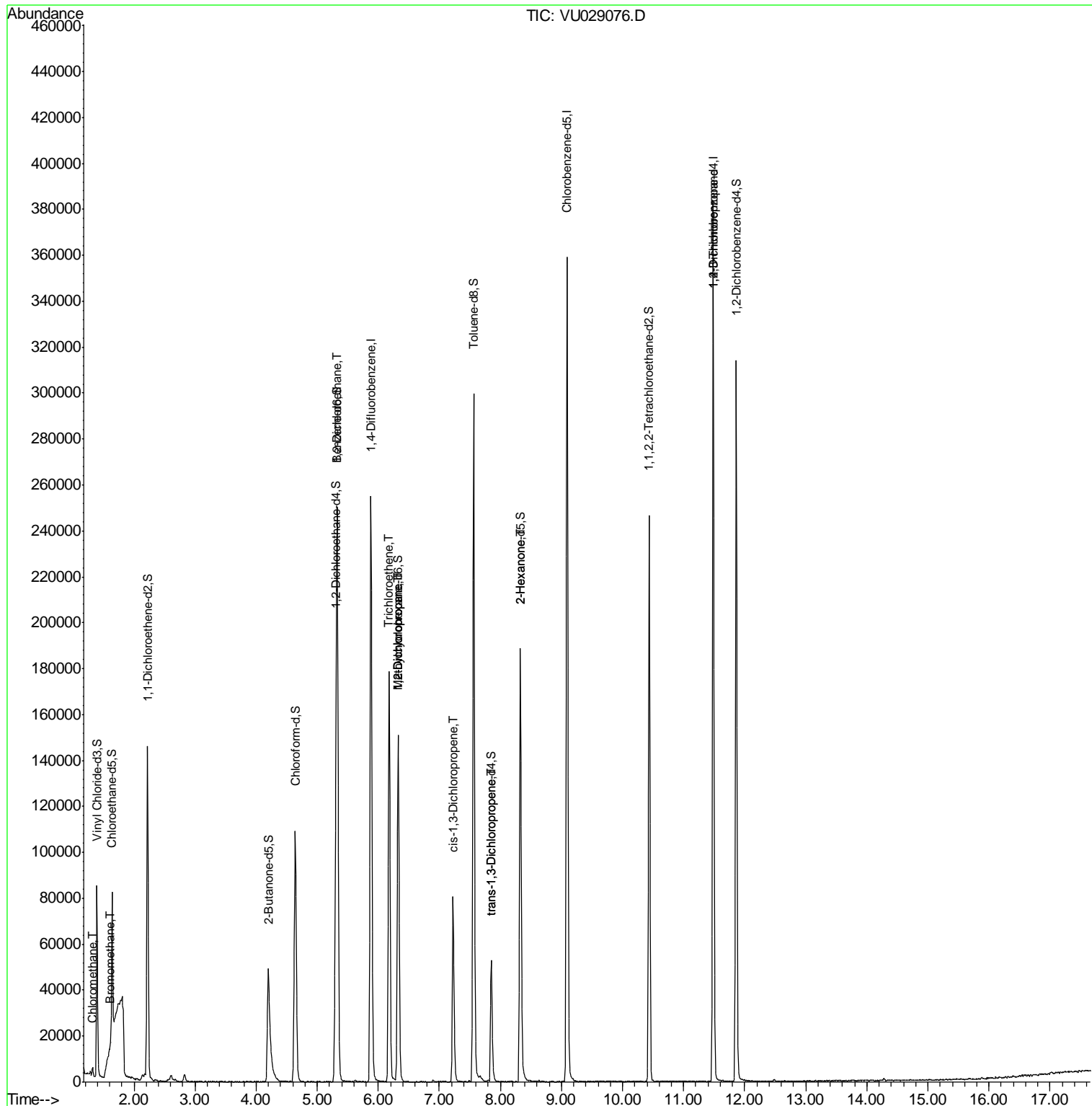
						Qvalue
3) Chloromethane	1.32	50	2680	1.063	ug/L	98
6) Bromomethane	1.60	94	538	0.567	ug/L	86
27) 1,2-Dichloroethane	5.33	62	1088	0.501	ug/L #	74
34) Trichloroethene	6.18	95	66768	38.316	ug/L	98
35) Methylcyclohexane	6.33	83	17921	6.175	ug/L #	17
37) 1,2-Dichloropropane	6.33	63	8095	4.012	ug/L #	90
39) cis-1,3-Dichloropropene	7.22	75	1818	0.632	ug/L #	66
44) trans-1,3-Dichloropropene	7.85	75	1439	0.561	ug/L #	70
48) 2-Hexanone	8.33	43	8869	3.985	ug/L #	67
59) 1,2,3-Trichloropropane	11.48	75	13015	5.405	ug/L	98

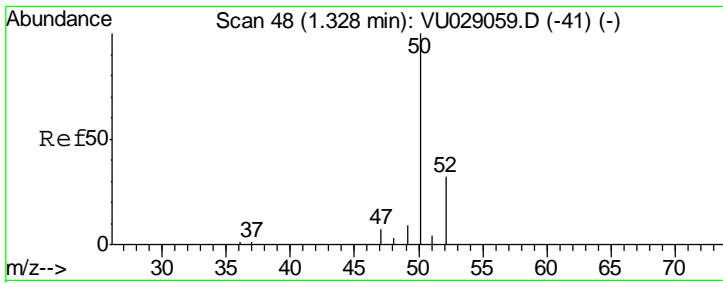
(#) = qualifier out of range (m) = manual integration (+) = signals summed

Data File : VU029076.D
Acq On : 07 Jan 2019 23:05
Operator : MD/SY
Sample : K1051-12
Misc : 6.32g/10mL/100uL/5.0mL/MSVOA_U/MEOH
ALS Vial : 33 Sample Multiplier: 1

Instrument :
MSVOA_U
Client Sampled :
BE9Y0

Quant Time: Jan 08 03:18:43 2019
Quant Method : Z:\VOASRV\HPCHEM1\MSVOA_U\METHOD\SOMULM122018WMA.M
Quant Title : VOC Analysis
QLast Update : Tue Jan 08 03:12:02 2019
Response via : Initial Calibration



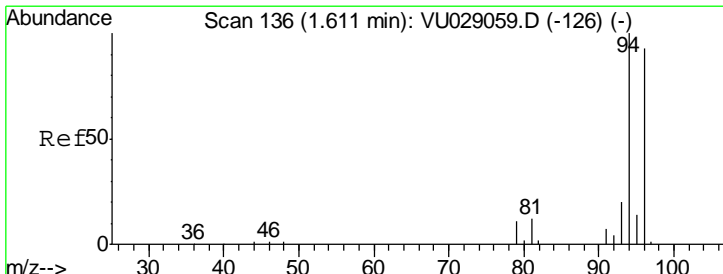
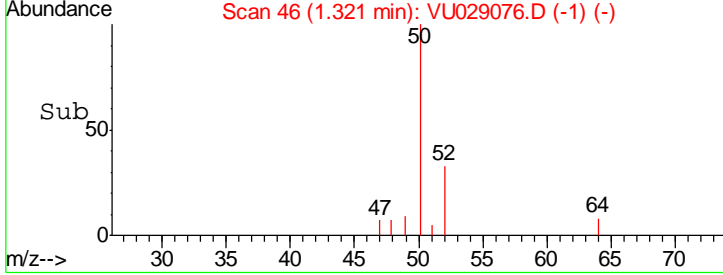
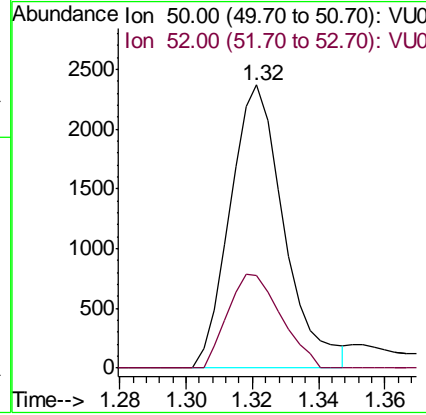
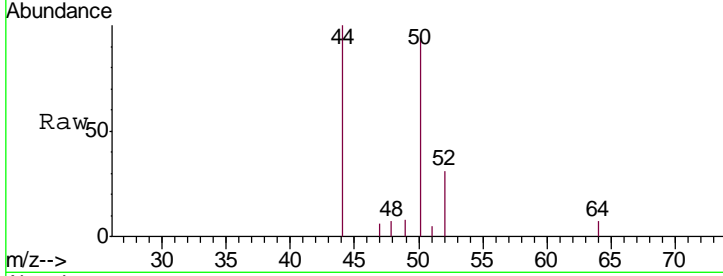


#3
 Chloromethane
 Concen: 1.063 ug/L
 RT: 1.32 min Scan# 46
 Delta R.T. -0.01 min
 Lab File: VU029076.D
 Acq: 07 Jan 2019 23:05

Instrument :
 MSVOA_U
ClientSampled :
 BE9Y0

Tgt Ion: 50 Resp: 2680

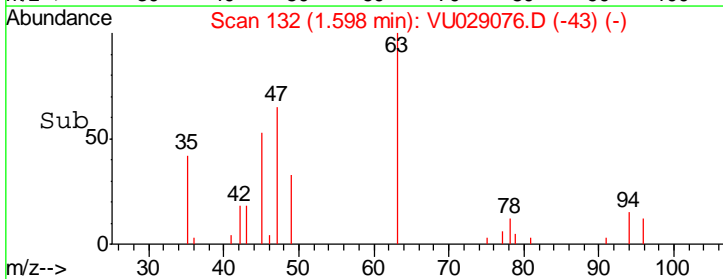
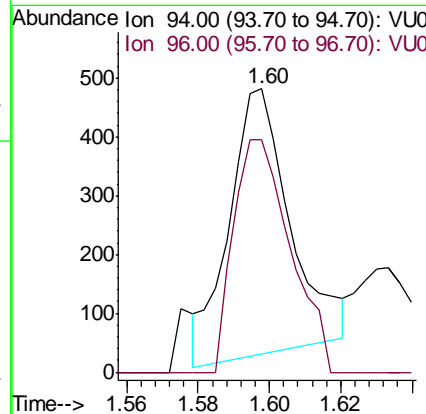
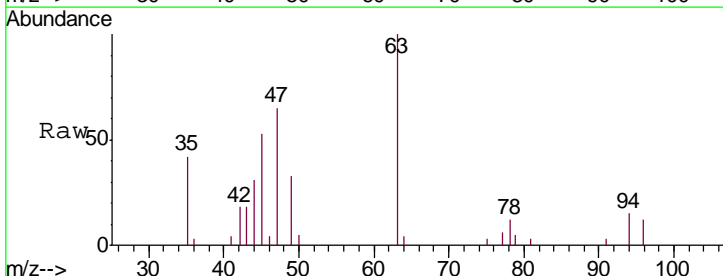
Ion	Ratio	Lower	Upper
50	100		
52	32.8	22.3	41.3

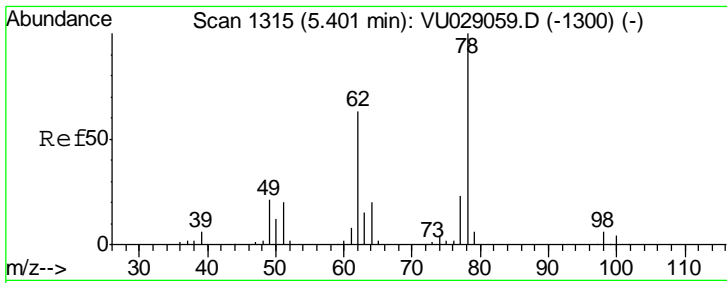


#6
 Bromomethane
 Concen: 0.567 ug/L
 RT: 1.60 min Scan# 132
 Delta R.T. -0.01 min
 Lab File: VU029076.D
 Acq: 07 Jan 2019 23:05

Tgt Ion: 94 Resp: 538

Ion	Ratio	Lower	Upper
94	100		
96	82.2	67.3	125.1

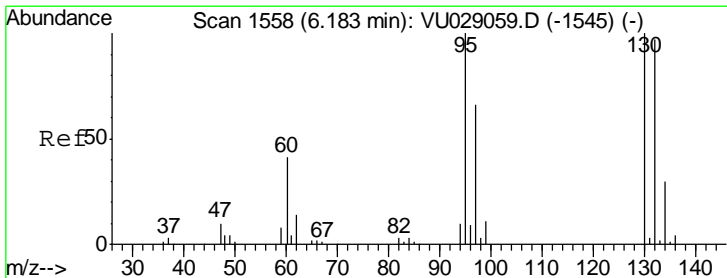
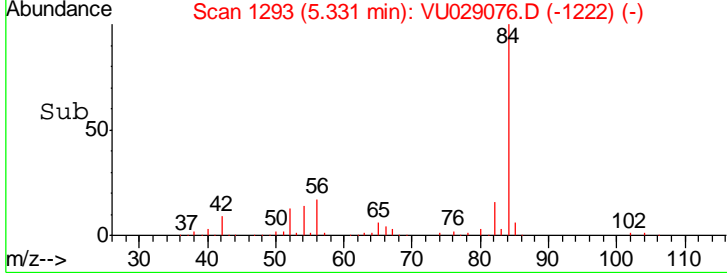
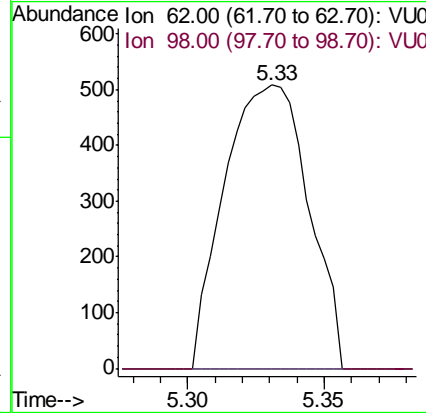
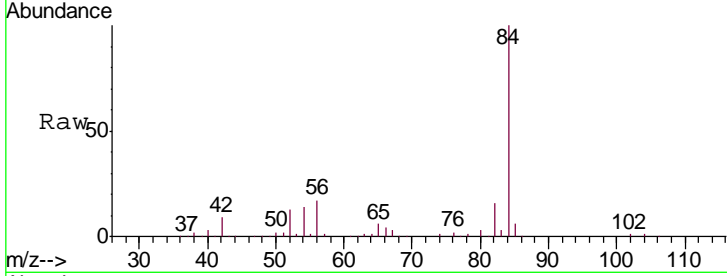




#27
 1,2-Dichloroethane
 Concen: 0.501 ug/L
 RT: 5.33 min Scan# 1293
 Delta R.T. -0.07 min
 Lab File: VU029076.D
 Acq: 07 Jan 2019 23:05

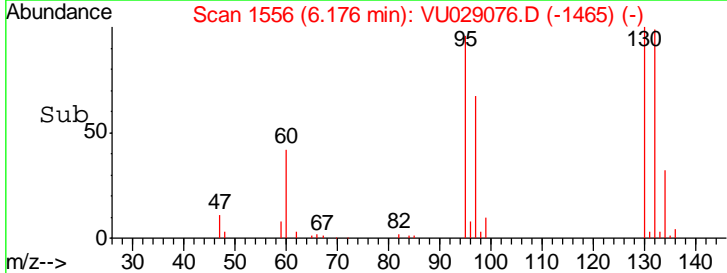
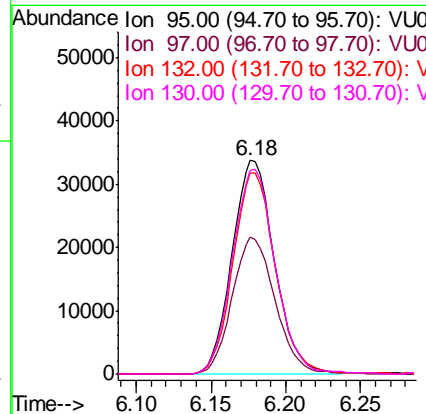
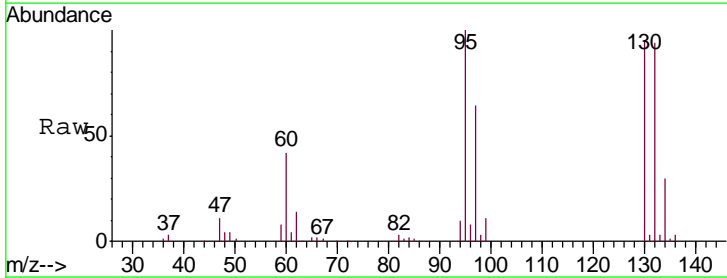
Instrument : MSVOA_U
 ClientSampled : BE9Y0

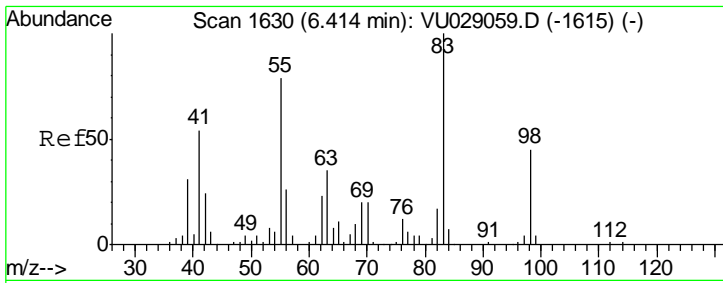
Tgt Ion	Resp	Lower	Upper
62	1088		
98	0.0	7.5	11.3#



#34
 Trichloroethene
 Concen: 38.316 ug/L
 RT: 6.18 min Scan# 1556
 Delta R.T. -0.01 min
 Lab File: VU029076.D
 Acq: 07 Jan 2019 23:05

Tgt Ion	Resp	Lower	Upper
95	66768		
97	63.8	43.3	80.3
132	94.1	64.2	119.2
130	95.4	67.1	124.7

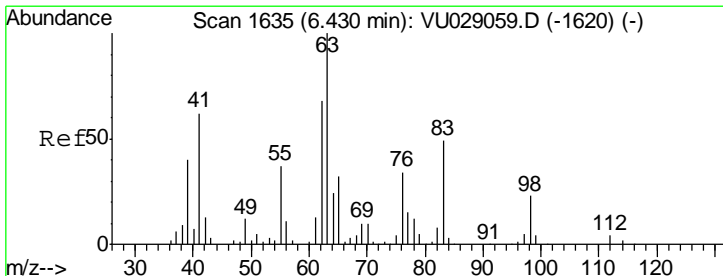
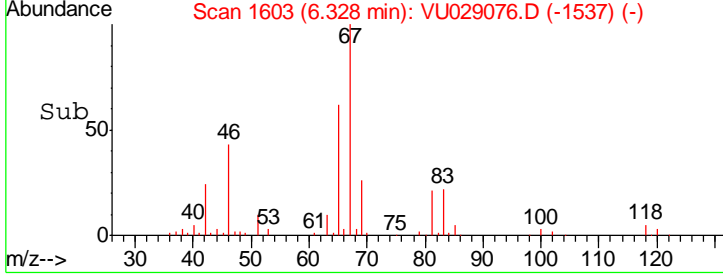
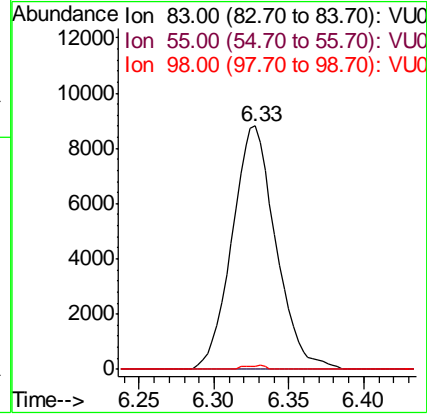
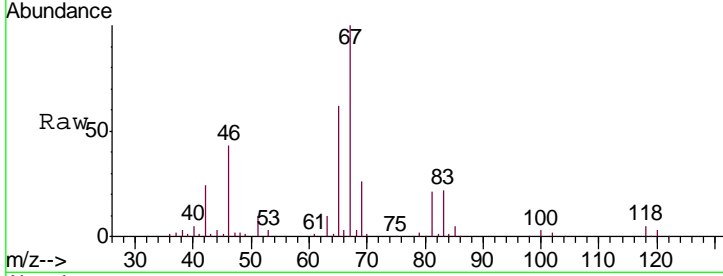




#35
 Methylcyclohexane
 Concen: 6.175 ug/L
 RT: 6.33 min Scan# 1603
 Delta R.T. -0.09 min
 Lab File: VU029076.D
 Acq: 07 Jan 2019 23:05

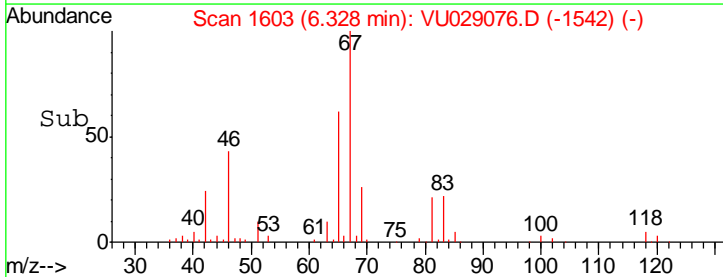
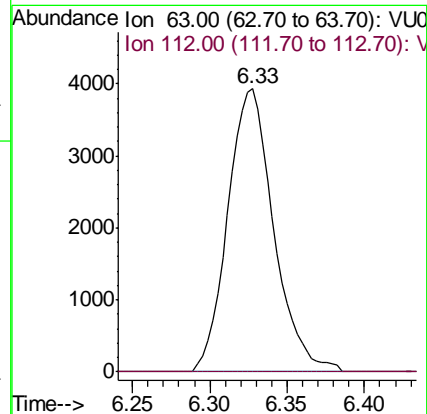
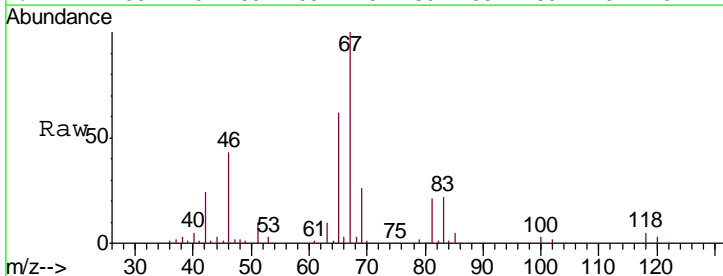
Instrument : MSVOA_U
 ClientSampled : BE9Y0

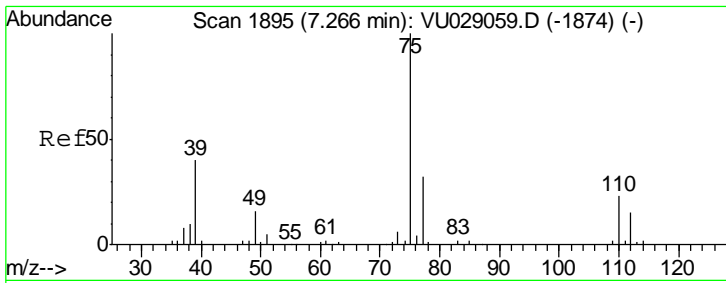
Tgt Ion	Resp	Lower	Upper
83	17921		
55	0.0	63.7	95.5#
98	0.0	35.6	53.4#



#37
 1,2-Dichloropropane
 Concen: 4.012 ug/L
 RT: 6.33 min Scan# 1603
 Delta R.T. -0.10 min
 Lab File: VU029076.D
 Acq: 07 Jan 2019 23:05

Tgt Ion	Resp	Lower	Upper
63	8095		
112	0.0	2.7	4.1#

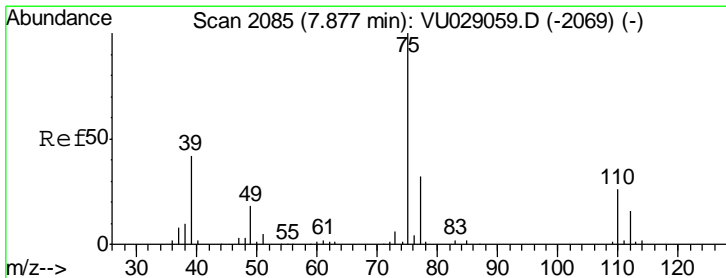
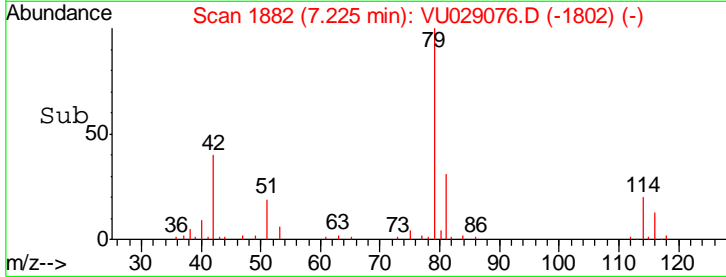
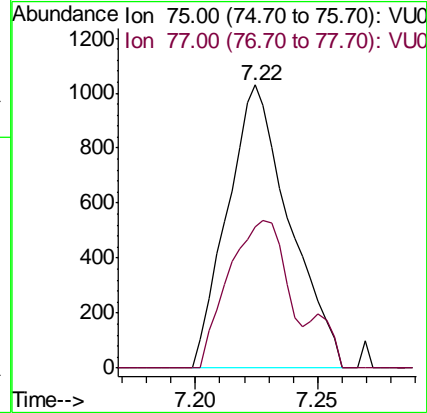
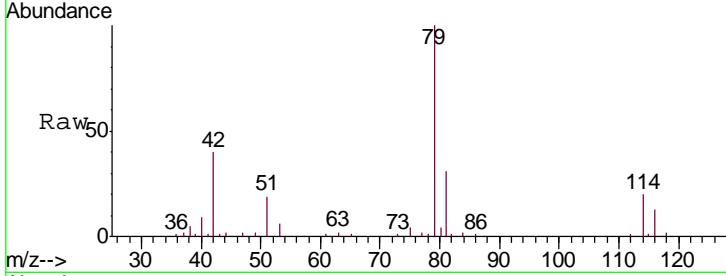




#39
 cis-1,3-Dichloropropene
 Concen: 0.632 ug/L
 RT: 7.22 min Scan# 1882
 Delta R.T. -0.04 min
 Lab File: VU029076.D
 Acq: 07 Jan 2019 23:05

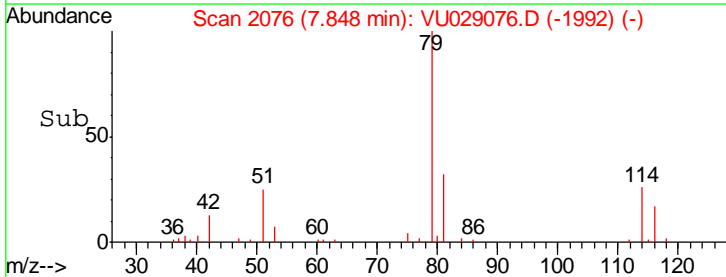
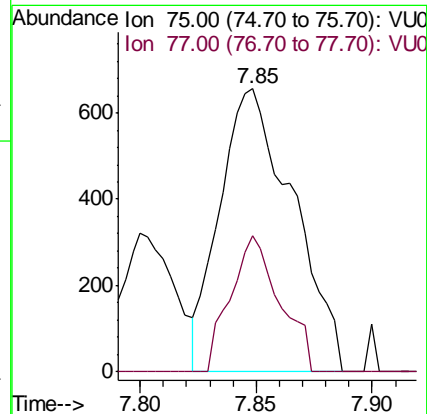
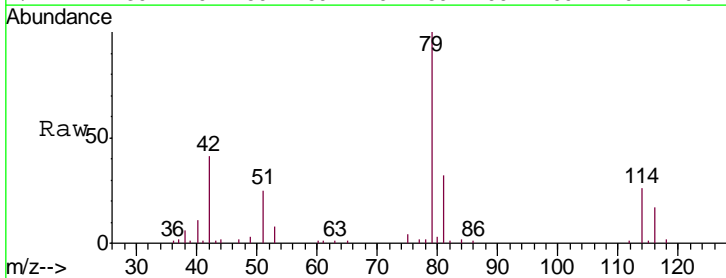
Instrument :
 MSVOA_U
 ClientSampled :
 BE9Y0

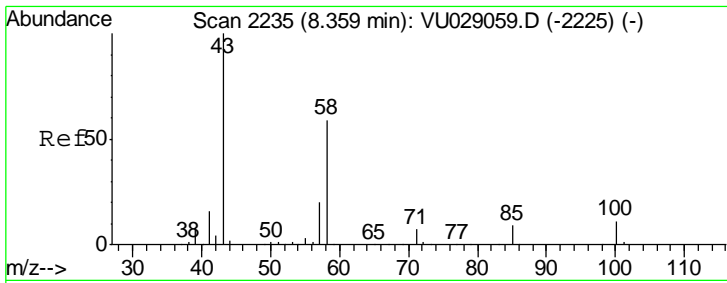
Tgt Ion: 75 Resp: 1818
 Ion Ratio Lower Upper
 75 100
 77 49.8 21.8 40.6#



#44
 trans-1,3-Dichloropropene
 Concen: 0.561 ug/L
 RT: 7.85 min Scan# 2076
 Delta R.T. -0.03 min
 Lab File: VU029076.D
 Acq: 07 Jan 2019 23:05

Tgt Ion: 75 Resp: 1439
 Ion Ratio Lower Upper
 75 100
 77 47.9 21.8 40.6#

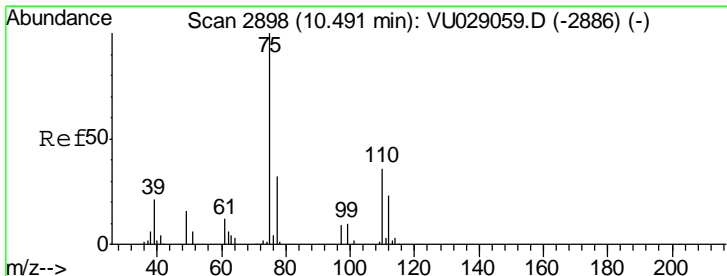
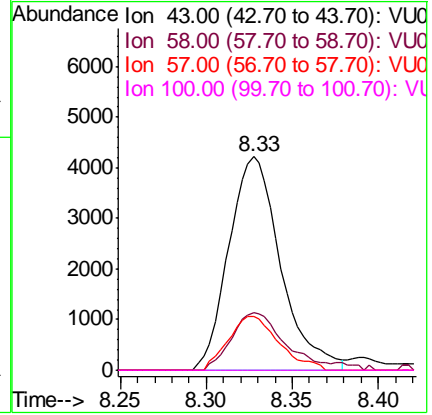
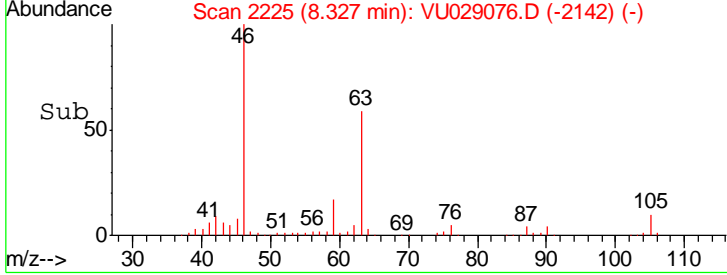
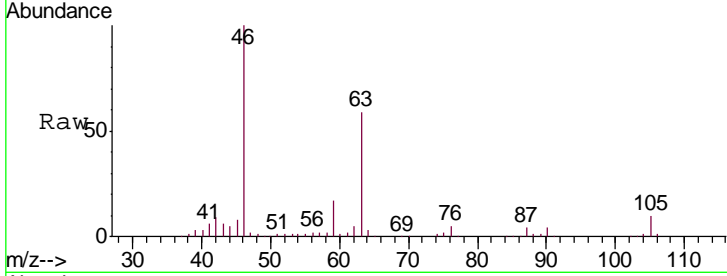




#48
 2-Hexanone
 Concen: 3.985 ug/L
 RT: 8.33 min Scan# 2225
 Delta R.T. -0.03 min
 Lab File: VU029076.D
 Acq: 07 Jan 2019 23:05

Instrument :
 MSVOA_U
 ClientSampled :
 BE9Y0

Tgt Ion	Resp	Lower	Upper
43	100		
58	27.5	45.9	68.9#
57	24.5	15.0	22.4#
100	0.0	8.7	13.1#



#59
 1,2,3-Trichloropropane
 Concen: 5.405 ug/L
 RT: 11.48 min Scan# 3207
 Delta R.T. 0.99 min
 Lab File: VU029076.D
 Acq: 07 Jan 2019 23:05

Tgt Ion	Resp	Lower	Upper
75	100		
77	33.0	25.5	38.3

