

Data Path : Z:\VOASRV\HPCHEM1\MSVOA U\DATA\VU010919\
 Data File : VU029094.D
 Acq On : 09 Jan 2019 17:02
 Operator : MD/SY
 Sample : PB116248ZHE#09
 Misc : 5.0mL/MSVOA U/WATER
 ALS Vial : 16 Sample Multiplier: 1

Instrument :
 MSVOA_U
 ClientSampleId :
 PB116248ZHE#09

Quant Time: Jan 10 05:37:19 2019
 Quant Method : Z:\VOASRV\HPCHEM1\MSVOA_U\METHOD\82U010319W.M
 Quant Title : SW846 8260
 QLast Update : Fri Jan 04 02:22:53 2019
 Response via : Initial Calibration

Internal Standards	R.T.	QIon	Response	Conc	Units	Dev(Min)
1) Pentafluorobenzene	4.98	168	107638	50.00	ug/l	0.00
34) 1,4-Difluorobenzene	5.88	114	187243	50.00	ug/l	0.00
63) Chlorobenzene-d5	9.09	117	179362	50.00	ug/l	0.00
72) 1,4-Dichlorobenzene-d4	11.48	152	72658	50.00	ug/l	0.00

System Monitoring Compounds

33) 1,2-Dichloroethane-d4	5.31	65	73841	55.49	ug/l	0.00
Spiked Amount	50.000		Recovery	= 110.98%		
35) Dibromofluoromethane	4.88	113	64356	53.02	ug/l	0.00
Spiked Amount	50.000		Recovery	= 106.04%		
50) Toluene-d8	7.56	98	244525	51.03	ug/l	0.00
Spiked Amount	50.000		Recovery	= 102.06%		
62) 4-Bromofluorobenzene	10.30	95	77350	44.92	ug/l	0.00
Spiked Amount	50.000		Recovery	= 89.84%		

Target Compounds

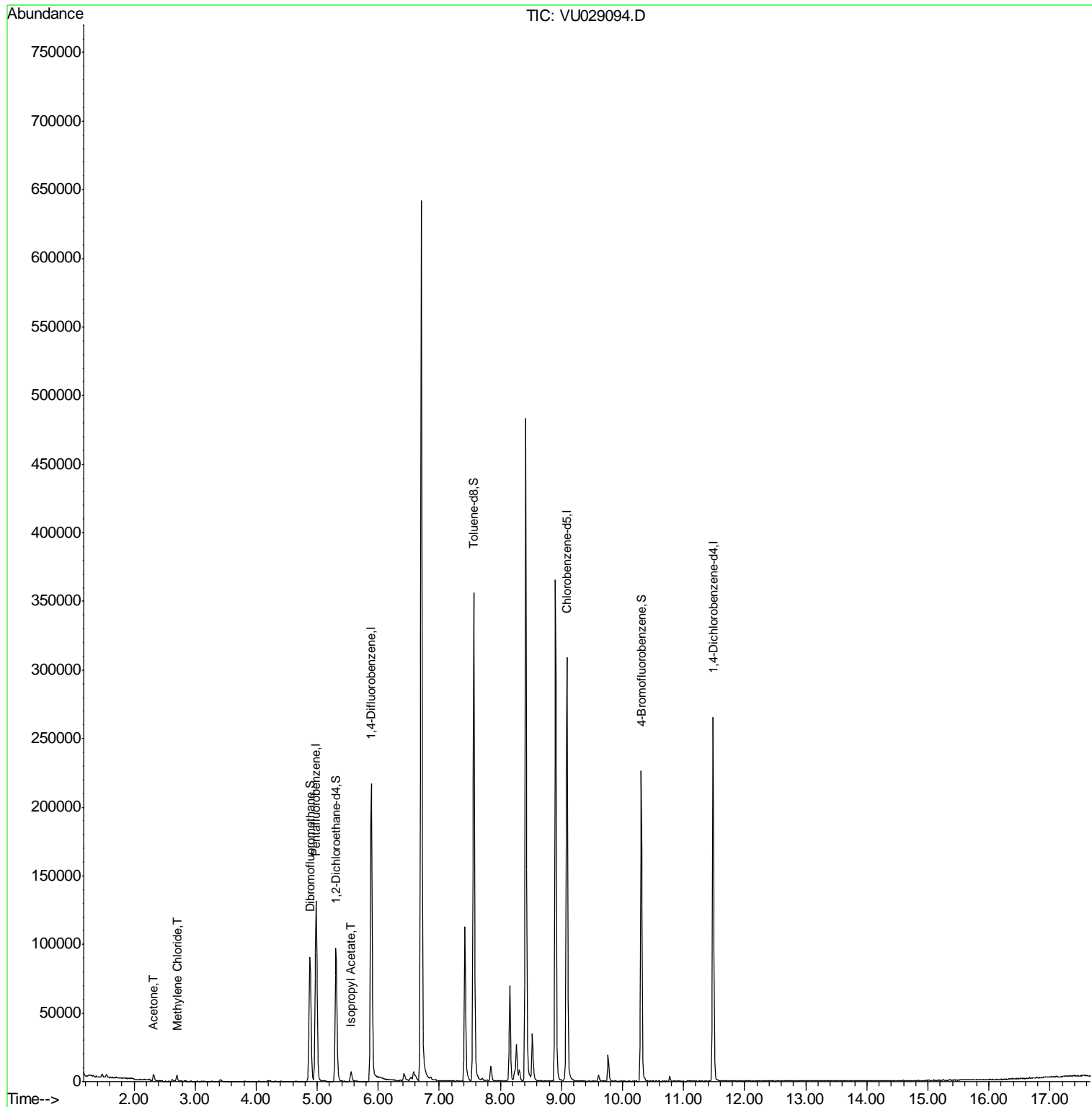
					Qvalue
16) Acetone	2.32	43	5685	6.782	ug/l 96
20) Methylene Chloride	2.70	84	2060	1.447	ug/l 91
43) Isopropyl Acetate	5.55	43	8355	2.651	ug/l 95

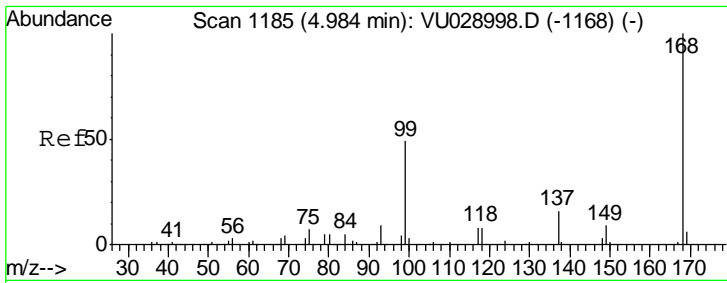
(#) = qualifier out of range (m) = manual integration (+) = signals summed

Data Path : Z:\VOASRV\HPCHEM1\MSVOA U\DATA\VU010919\
 Data File : VU029094.D
 Acq On : 09 Jan 2019 17:02
 Operator : MD/SY
 Sample : PB116248ZHE#09
 Misc : 5.0mL/MSVOA U/WATER
 ALS Vial : 16 Sample Multiplier: 1

Instrument :
 MSVOA_U
 ClientSampleId :
 PB116248ZHE#09

Quant Time: Jan 10 05:37:19 2019
 Quant Method : Z:\VOASRV\HPCHEM1\MSVOA_U\METHOD\82U010319W.M
 Quant Title : SW846 8260
 QLast Update : Fri Jan 04 02:22:53 2019
 Response via : Initial Calibration

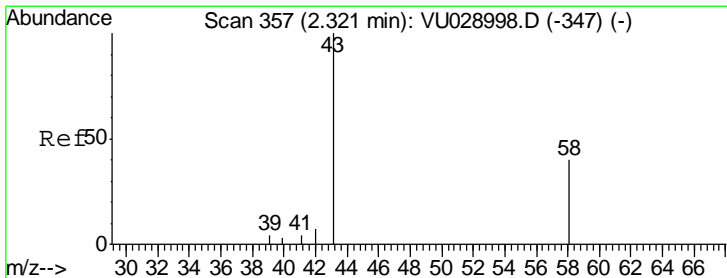
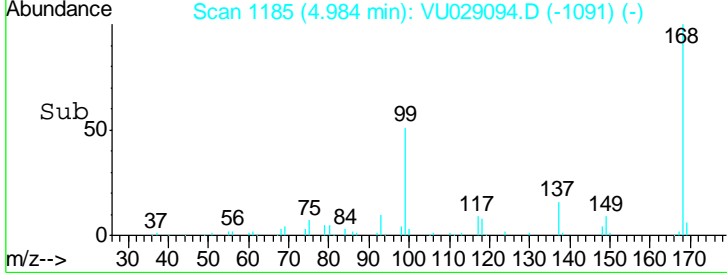
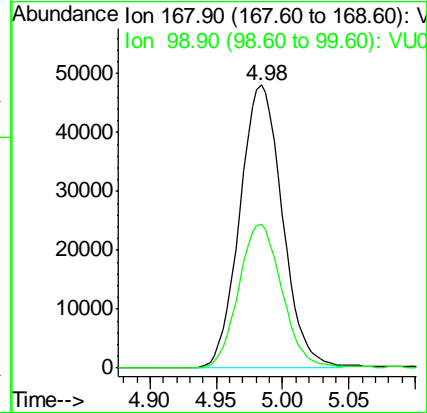
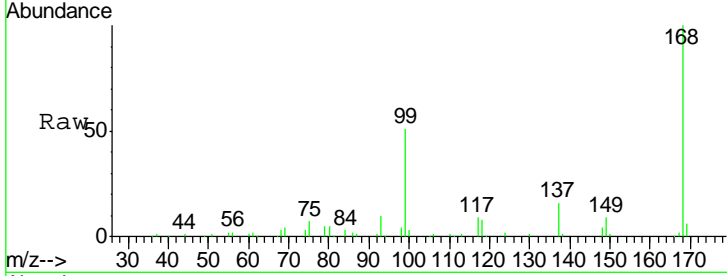




#1
 Pentafluorobenzene
 Concen: 50.000 ug/l
 RT: 4.98 min Scan# 1185
 Delta R.T. 0.00 min
 Lab File: VU029094.D
 Acq: 09 Jan 2019 17:02

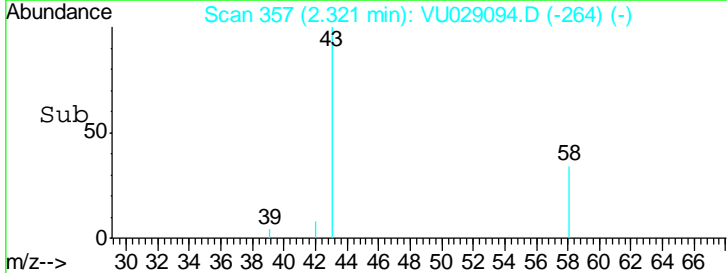
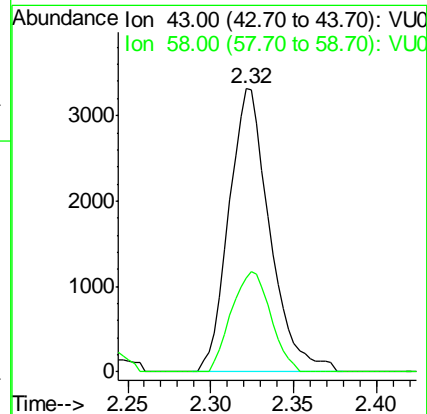
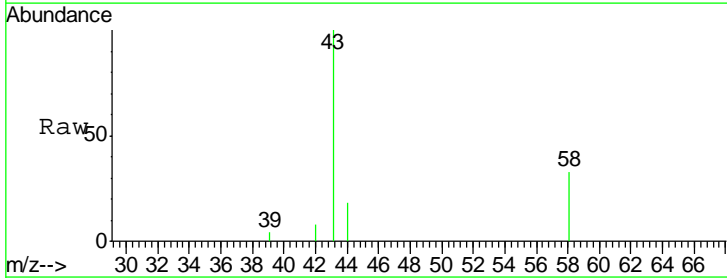
Instrument : MSVOA_U
 ClientSampleId : PB116248ZHE#09

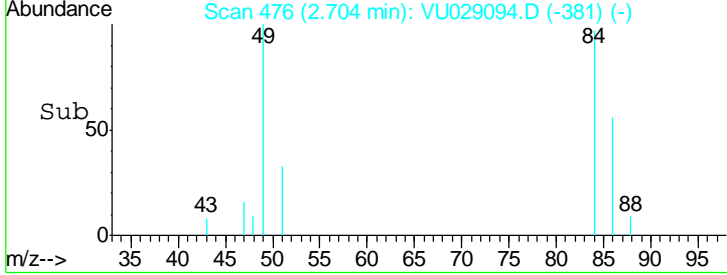
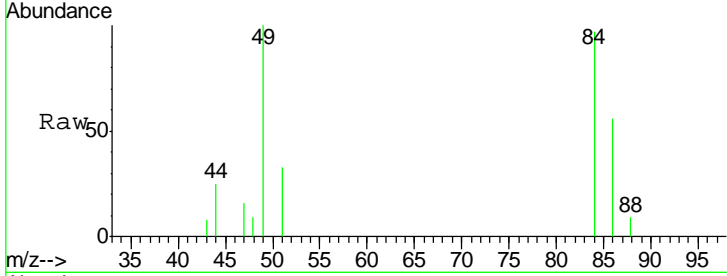
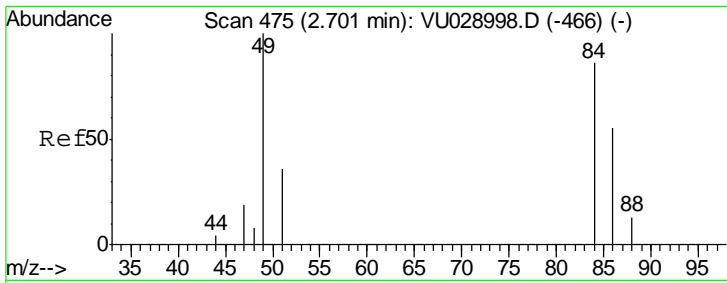
Tgt Ion: 168 Resp: 107638
 Ion Ratio Lower Upper
 168 100
 99 50.9 42.0 63.0



#16
 Acetone
 Concen: 6.782 ug/l
 RT: 2.32 min Scan# 357
 Delta R.T. 0.00 min
 Lab File: VU029094.D
 Acq: 09 Jan 2019 17:02

Tgt Ion: 43 Resp: 5685
 Ion Ratio Lower Upper
 43 100
 58 33.4 28.6 42.8

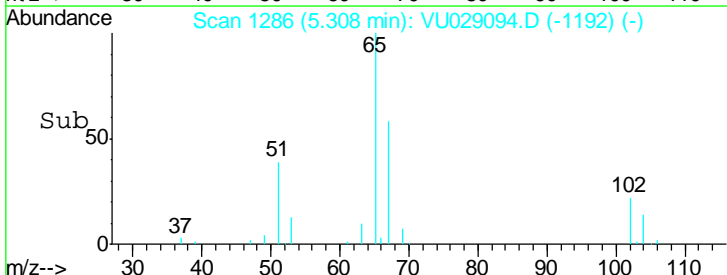
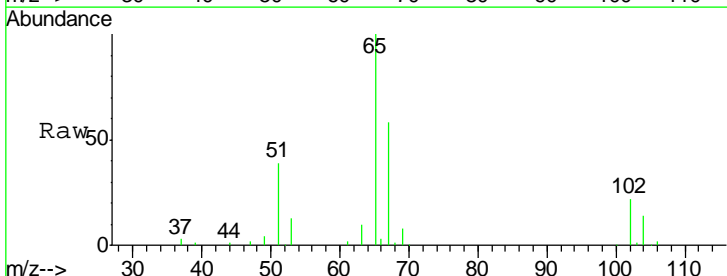
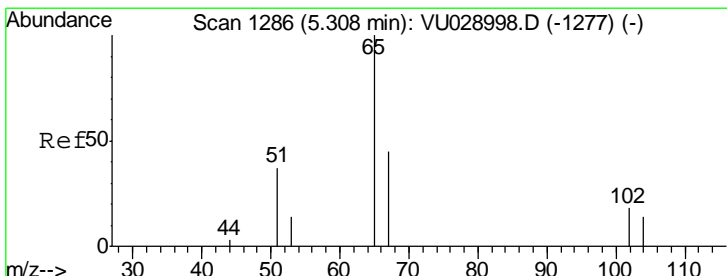
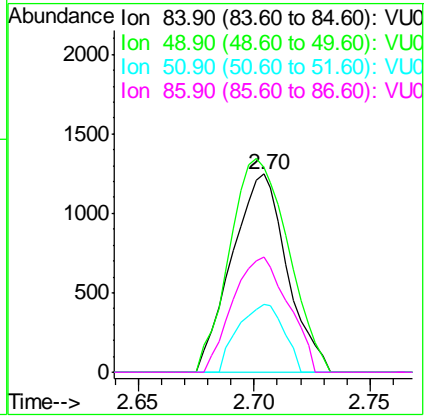




#20
 Methylene Chloride
 Concen: 1.447 ug/l
 RT: 2.70 min Scan# 476
 Delta R.T. 0.01 min
 Lab File: VU029094.D
 Acq: 09 Jan 2019 17:02

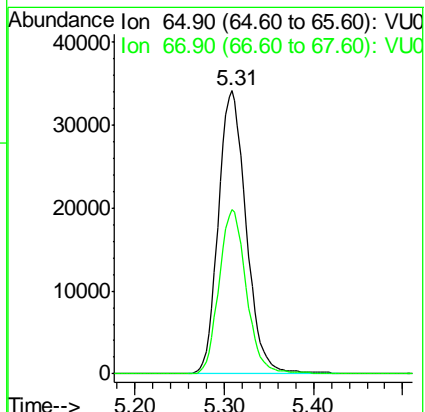
Instrument : MSVOA_U
 ClientSampled : PB116248ZHE#09

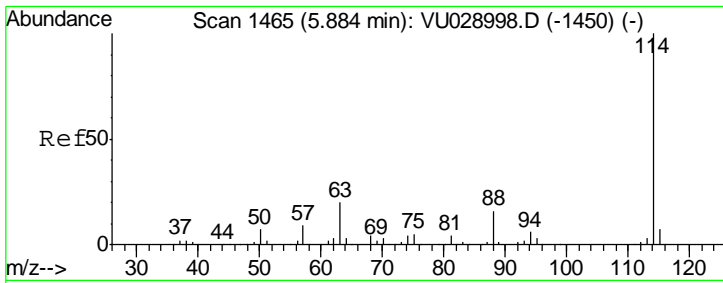
Tgt Ion	Resp	Lower	Upper
84	2060		
49	103.4	91.9	137.9
51	34.4	29.2	43.8
86	58.3	51.8	77.6



#33
 1,2-Dichloroethane-d4
 Concen: 55.494 ug/l
 RT: 5.31 min Scan# 1286
 Delta R.T. 0.00 min
 Lab File: VU029094.D
 Acq: 09 Jan 2019 17:02

Tgt Ion	Resp	Lower	Upper
65	73841		
67	56.9	0.0	111.0

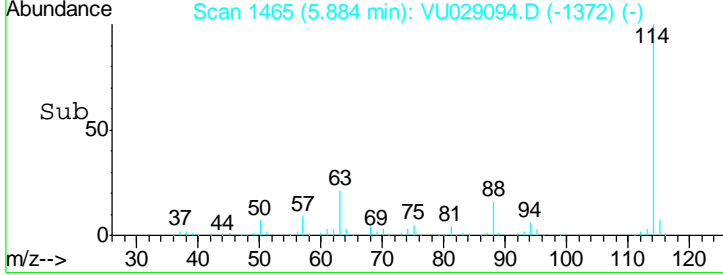
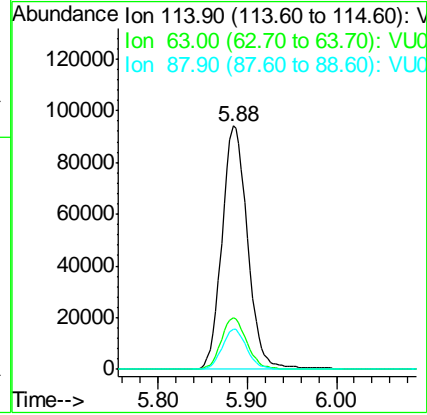
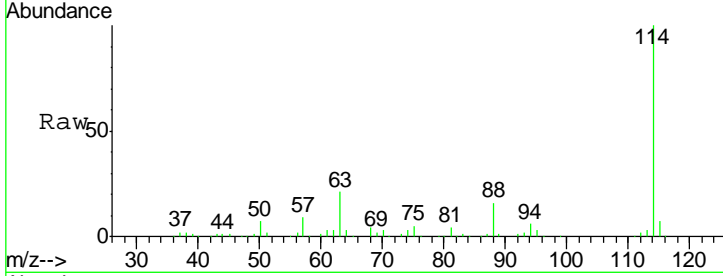




#34
 1,4-Difluorobenzene
 Concen: 50.000 ug/l
 RT: 5.88 min Scan# 1465
 Delta R.T. 0.00 min
 Lab File: VU029094.D
 Acq: 09 Jan 2019 17:02

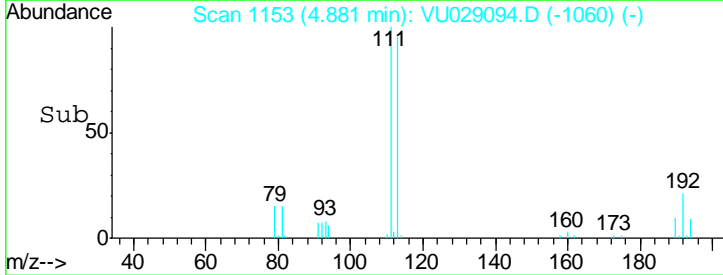
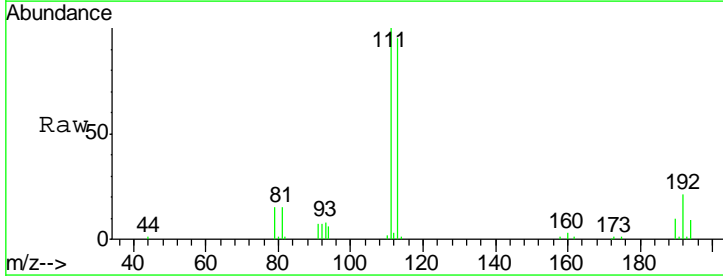
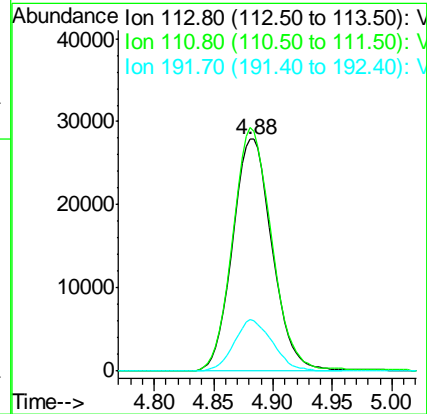
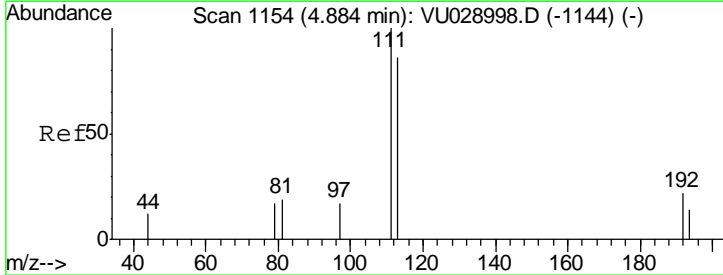
Instrument : MSVOA_U
 ClientSampleId : PB116248ZHE#09

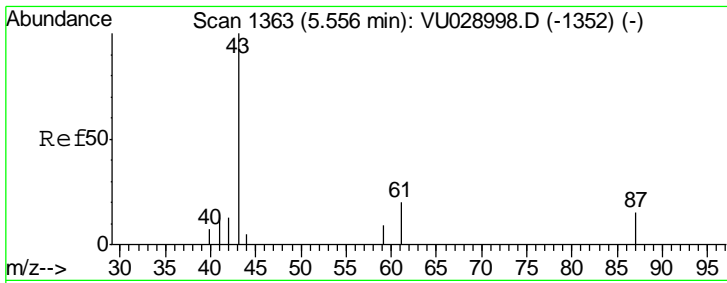
Tgt Ion	Resp	Lower	Upper
114	187243		
63	21.0	0.0	40.2
88	16.3	0.0	30.4



#35
 Dibromofluoromethane
 Concen: 53.022 ug/l
 RT: 4.88 min Scan# 1153
 Delta R.T. 0.00 min
 Lab File: VU029094.D
 Acq: 09 Jan 2019 17:02

Tgt Ion	Resp	Lower	Upper
113	64356		
111	104.0	81.4	122.2
192	21.4	16.8	25.2

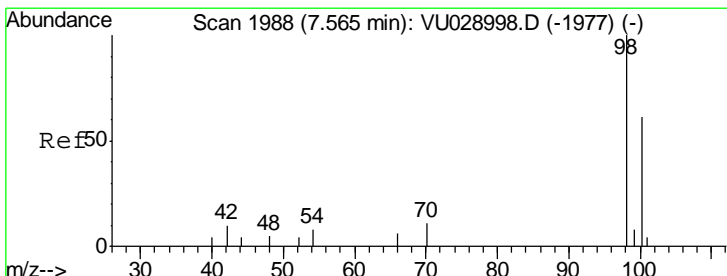
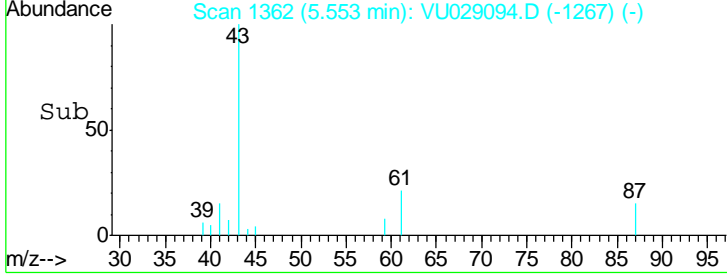
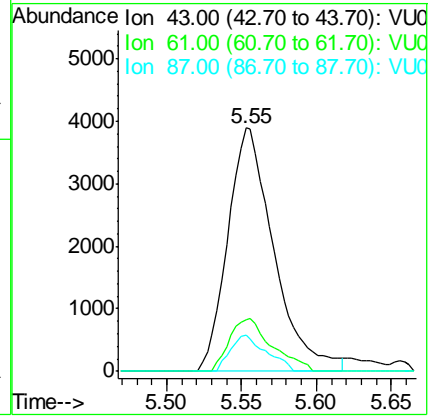
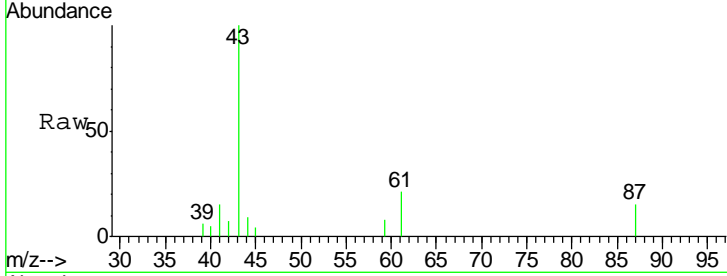




#43
 Isopropyl Acetate
 Concen: 2.651 ug/l
 RT: 5.55 min Scan# 1362
 Delta R.T. 0.01 min
 Lab File: VU029094.D
 Acq: 09 Jan 2019 17:02

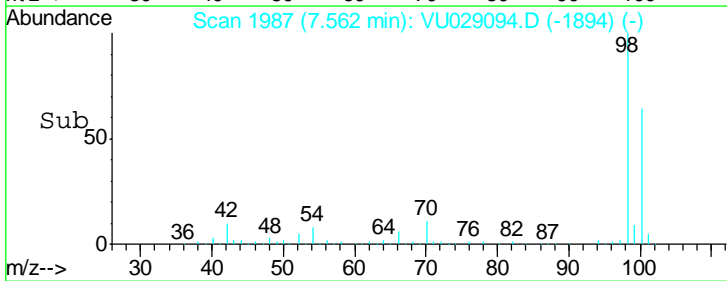
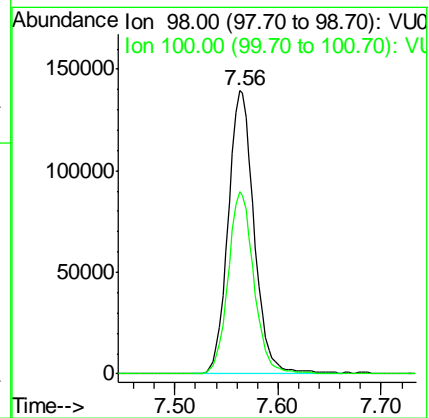
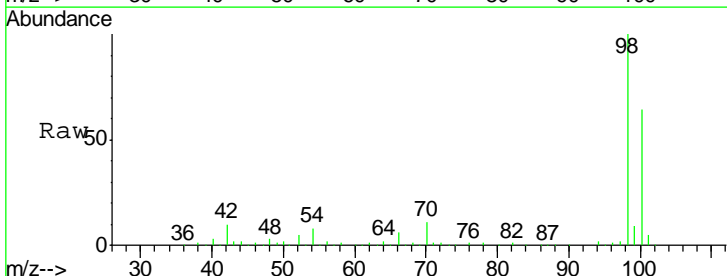
Instrument : MSVOA_U
 ClientSampled : PB116248ZHE#09

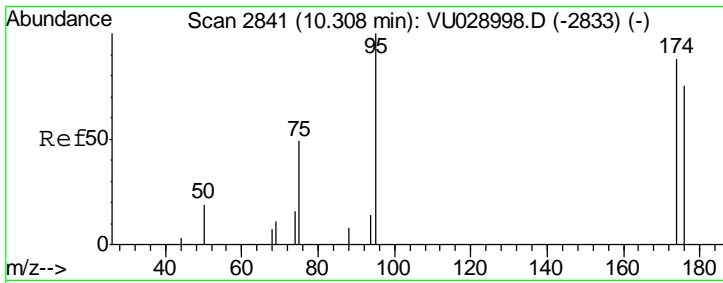
Tgt Ion	Resp	Lower	Upper
43	100		
61	20.0	17.8	26.6
87	11.5	11.3	16.9



#50
 Toluene-d8
 Concen: 51.030 ug/l
 RT: 7.56 min Scan# 1987
 Delta R.T. 0.00 min
 Lab File: VU029094.D
 Acq: 09 Jan 2019 17:02

Tgt Ion	Resp	Lower	Upper
98	100		
100	63.5	51.6	77.4



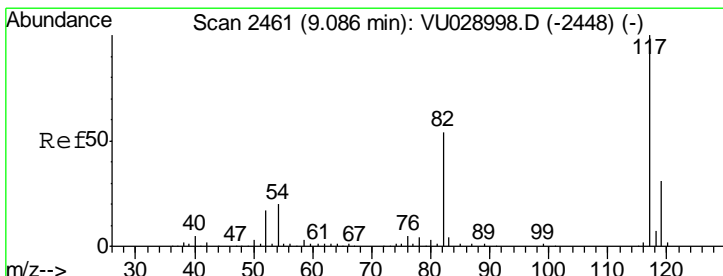
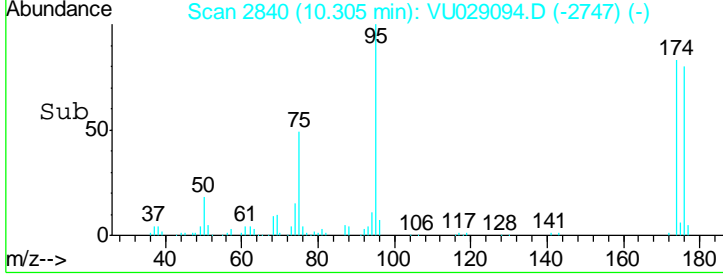
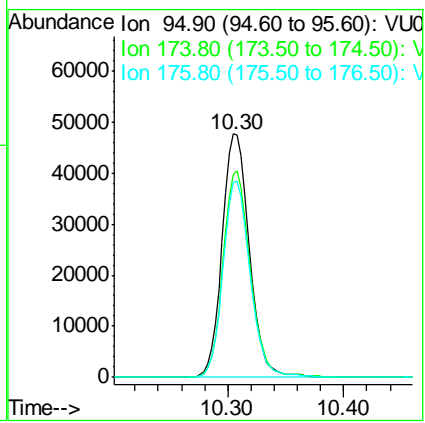
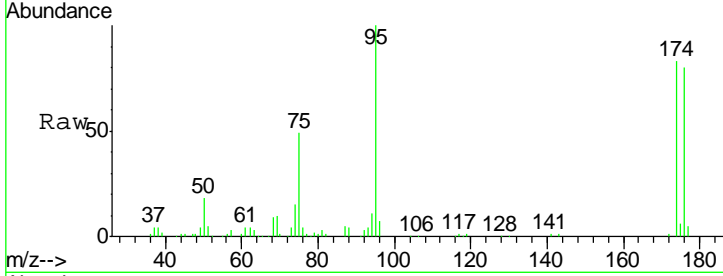


#62
 4-Bromofluorobenzene
 Concen: 44.917 ug/l
 RT: 10.30 min Scan# 2840
 Delta R.T. 0.00 min
 Lab File: VU029094.D
 Acq: 09 Jan 2019 17:02

Instrument : MSVOA_U
 ClientSampleId : PB116248ZHE#09

Tot Ion: 95 Resp: 77350

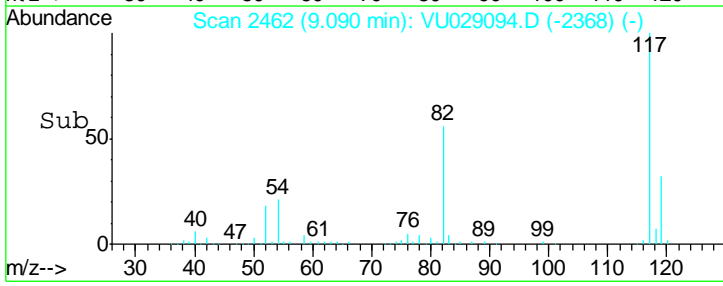
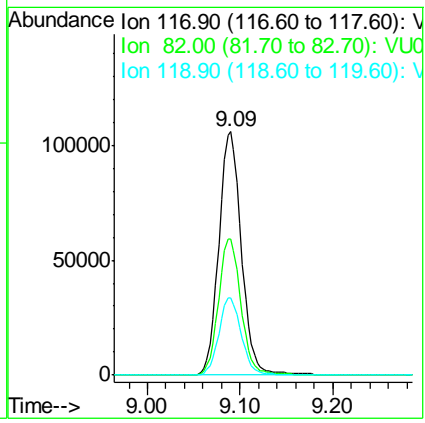
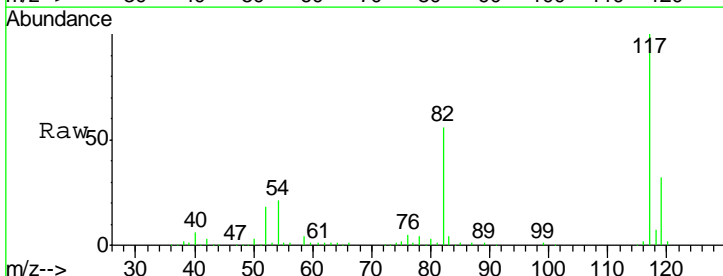
Ion	Ratio	Lower	Upper
95	100		
174	84.8	0.0	170.6
176	80.2	0.0	165.0

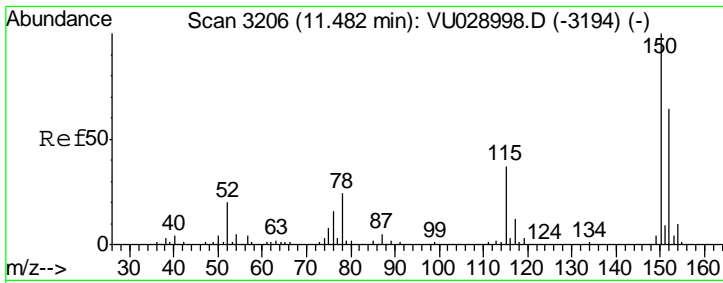


#63
 Chlorobenzene-d5
 Concen: 50.000 ug/l
 RT: 9.09 min Scan# 2462
 Delta R.T. 0.00 min
 Lab File: VU029094.D
 Acq: 09 Jan 2019 17:02

Tgt Ion: 117 Resp: 179362

Ion	Ratio	Lower	Upper
117	100		
82	56.1	43.9	65.9
119	31.8	26.0	39.0





#72
 1,4-Dichlorobenzene-d4
 Concen: 50.000 ug/l
 RT: 11.48 min Scan# 3206
 Delta R.T. 0.00 min
 Lab File: VU029094.D
 Acq: 09 Jan 2019 17:02

Instrument : MSVOA_U
 ClientSampled : PB116248ZHE#09

Tot Ion	Resp	Lower	Upper
152	100		
115	57.4	40.1	120.3
150	156.2	0.0	345.2

