

Data Path : Z:\VOASRV\HPCHEM1\MSVOA_U\DATA\VU010921\
 Data File : VU041882.D
 Acq On : 07 Jan 2021 19:04
 Operator : SY/MD
 Sample : M1026-13
 Misc : 25.0mL/MSVOA_U/WATER
 ALS Vial : 15 Sample Multiplier: 1

Instrument :
 MSVOA_U
 ClientSampleId :
 BFXL6

Quant Time: Jan 08 06:26:51 2021
 Quant Method : Z:\VOASRV\HPCHEM1\MSVOA_U\METHOD\SOMUTR121220WMA.M
 Quant Title : TRACE VOA SOM01.0
 QLast Update : Fri Jan 08 04:58:19 2021
 Response via : Initial Calibration

Internal Standards	R.T.	QIon	Response	Conc	Units	Dev(Min)
1) 1,4-Difluorobenzene	6.26	114	139116	5.00	ug/L	0.00
28) Chlorobenzene-d5	9.42	117	134753	5.00	ug/L	0.00
60) 1,4-Dichlorobenzene-d4	11.81	152	56312	5.00	ug/L	0.00

System Monitoring Compounds

4) Vinyl Chloride-d3	1.60	65	41660	3.83	ug/L	0.00
Spiked Amount	5.000	Range	40 - 130	Recovery	=	76.60%
7) Chloroethane-d5	1.92	69	44729	5.31	ug/L	0.00
Spiked Amount	5.000	Range	65 - 130	Recovery	=	106.20%
11) 1,1-Dichloroethene-d2	2.58	63	64208	3.21	ug/L	0.00
Spiked Amount	5.000	Range	60 - 125	Recovery	=	64.20%
20) 2-Butanone-d5	4.65	46	174822	55.96	ug/L	0.00
Spiked Amount	50.000	Range	40 - 130	Recovery	=	111.92%
24) Chloroform-d	5.08	84	103940	5.58	ug/L	0.00
Spiked Amount	5.000	Range	70 - 125	Recovery	=	111.60%
26) 1,2-Dichloroethane-d4	5.72	65	57380	5.43	ug/L	0.00
Spiked Amount	5.000	Range	70 - 130	Recovery	=	108.60%
32) Benzene-d6	5.74	84	194125	5.03	ug/L	0.00
Spiked Amount	5.000	Range	70 - 125	Recovery	=	100.60%
36) 1,2-Dichloropropane-d6	6.70	67	64706	5.35	ug/L	0.00
Spiked Amount	5.000	Range	60 - 140	Recovery	=	107.00%
41) Toluene-d8	7.90	98	156800	4.50	ug/L	0.00
Spiked Amount	5.000	Range	70 - 130	Recovery	=	90.00%
43) trans-1,3-Dichloropropene-	8.19	79	24000	4.41	ug/L	0.00
Spiked Amount	5.000	Range	55 - 130	Recovery	=	88.20%
46) 2-Hexanone-d5	8.64	63	147904	49.74	ug/L	0.00
Spiked Amount	50.000	Range	45 - 130	Recovery	=	99.48%
57) 1,1,2,2-Tetrachloroethane-	10.75	84	56314	5.12	ug/L	0.00
Spiked Amount	5.000	Range	65 - 120	Recovery	=	102.40%
64) 1,2-Dichlorobenzene-d4	12.19	152	59609	5.95	ug/L	0.00
Spiked Amount	5.000	Range	80 - 120	Recovery	=	119.00%

Target Compounds

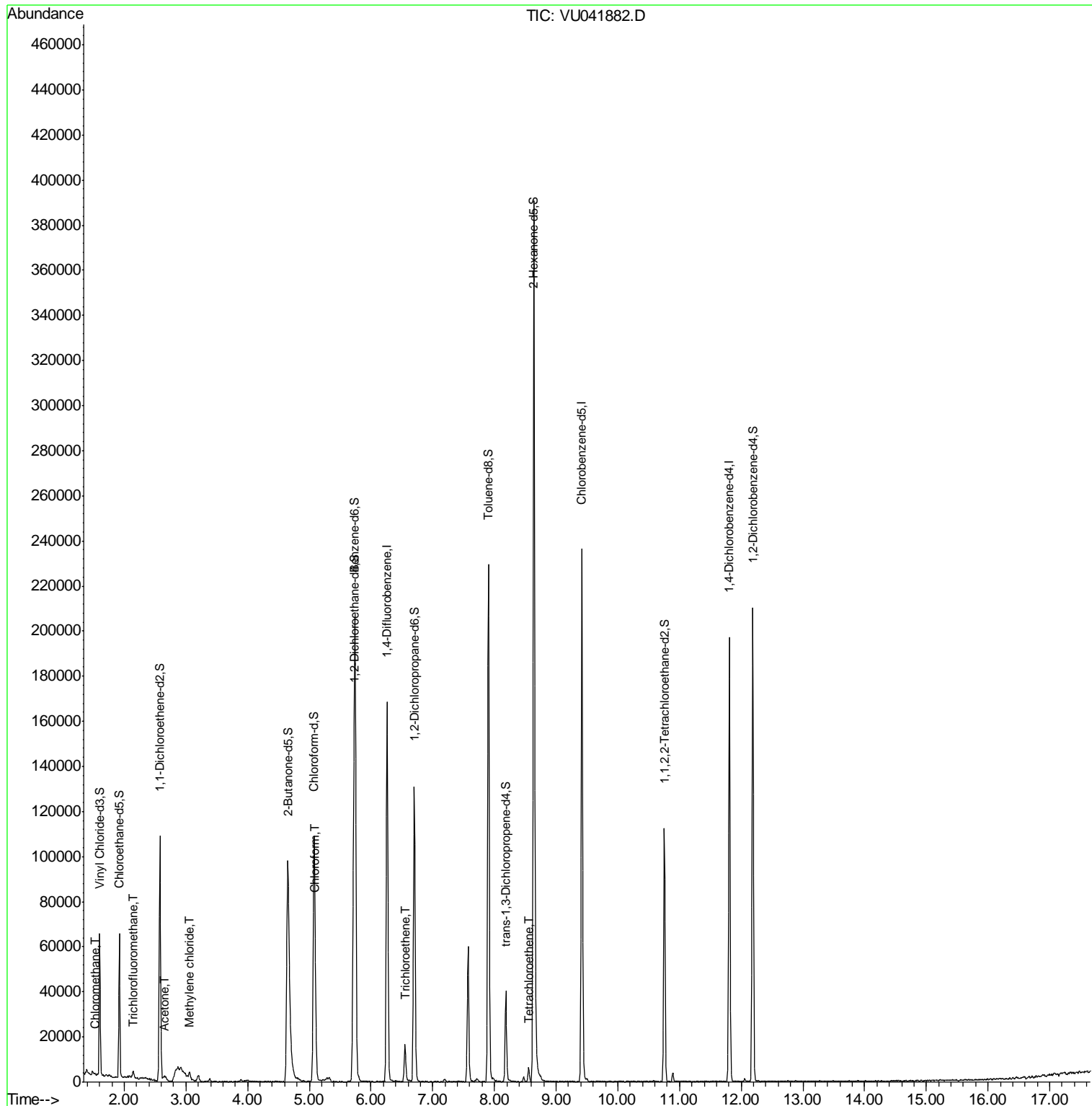
Target Compounds	R.T.	QIon	Response	Conc	Units	Qvalue
3) Chloromethane	1.52	50	554	0.048	ug/L	84
9) Trichlorofluoromethane	2.15	101	1900	0.119	ug/L	88
13) Acetone	2.66	43	3781	1.903	ug/L	62
16) Methylene chloride	3.06	84	1302	0.116	ug/L #	85
25) Chloroform	5.11	83	8170	0.445	ug/L	86
34) Trichloroethene	6.55	95	5658	0.522	ug/L	94
47) Tetrachloroethene	8.56	164	1445	0.191	ug/L	86

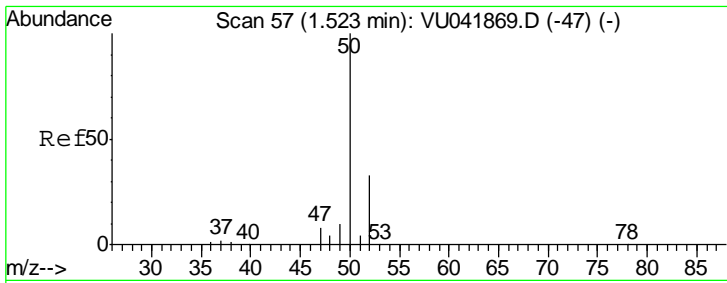
(#) = qualifier out of range (m) = manual integration (+) = signals summed

Data Path : Z:\VOASRV\HPCHEM1\MSVOA_U\DATA\VU010921\
 Data File : VU041882.D
 Acq On : 07 Jan 2021 19:04
 Operator : SY/MD
 Sample : M1026-13
 Misc : 25.0mL/MSVOA_U/WATER
 ALS Vial : 15 Sample Multiplier: 1

Instrument :
 MSVOA_U
 ClientSampleId :
 BFXL6

Quant Time: Jan 08 06:26:51 2021
 Quant Method : Z:\VOASRV\HPCHEM1\MSVOA_U\METHOD\SOMUTR121220WMA.M
 Quant Title : TRACE VOA SOM01.0
 QLast Update : Fri Jan 08 04:58:19 2021
 Response via : Initial Calibration

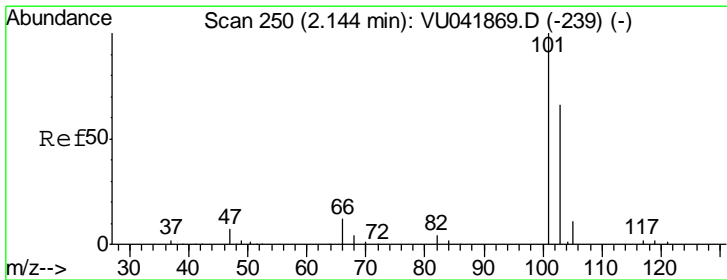
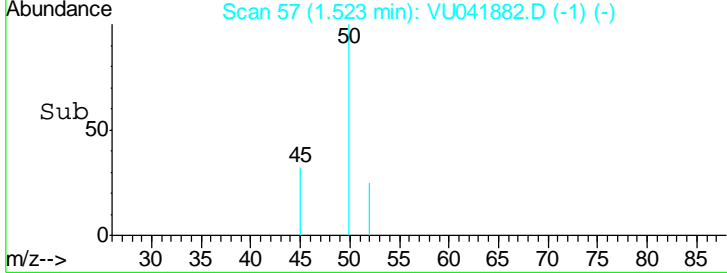
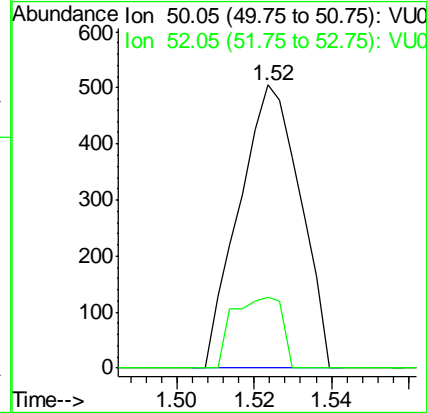
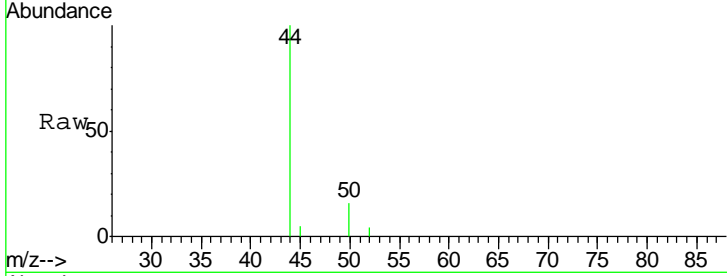




#3
 Chloromethane
 Concen: 0.048 ug/L
 RT: 1.52 min Scan# 57
 Delta R.T. 0.00 min
 Lab File: VU041882.D
 Acq: 07 Jan 2021 19:04

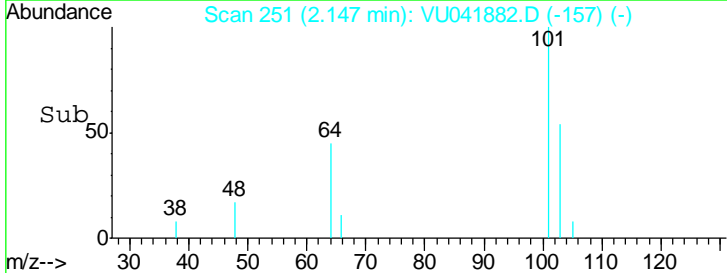
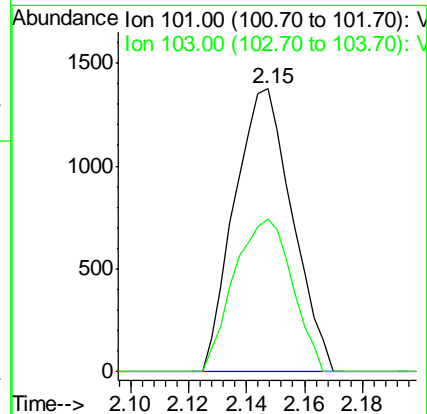
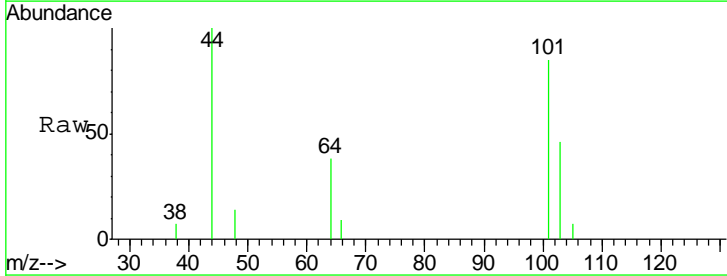
Instrument :
 MSVOA_U
ClientSampled :
 BFXL6

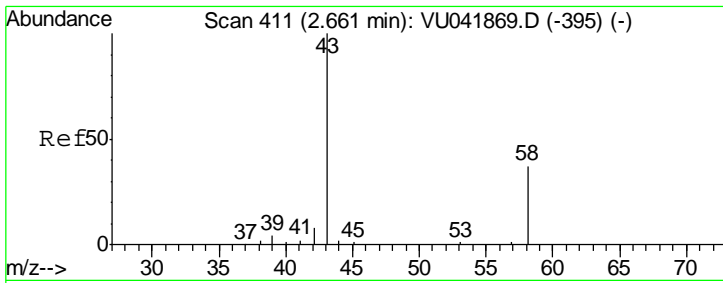
Tgt Ion: 50 Resp: 554
 Ion Ratio Lower Upper
 50 100
 52 25.1 24.1 44.8



#9
 Trichlorofluoromethane
 Concen: 0.119 ug/L
 RT: 2.15 min Scan# 251
 Delta R.T. 0.00 min
 Lab File: VU041882.D
 Acq: 07 Jan 2021 19:04

Tgt Ion: 101 Resp: 1900
 Ion Ratio Lower Upper
 101 100
 103 54.5 51.1 76.7

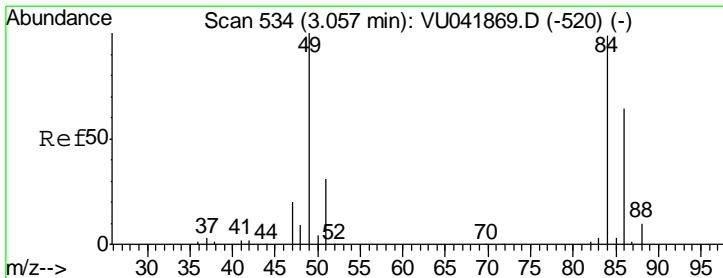
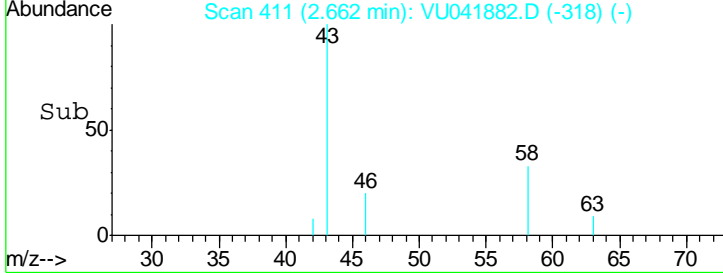
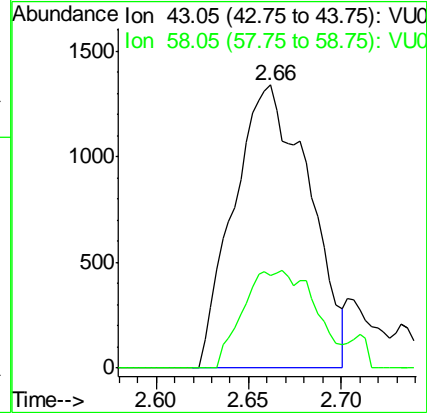
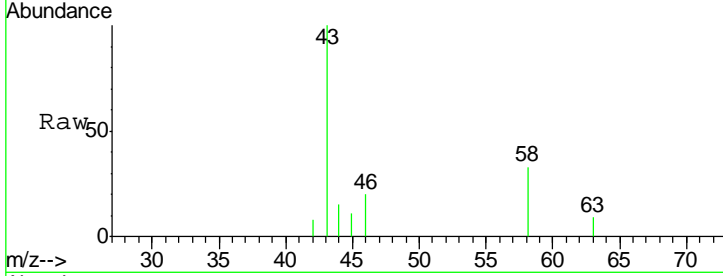




#13
 Acetone
 Concen: 1.903 ug/L
 RT: 2.66 min Scan# 411
 Delta R.T. 0.00 min
 Lab File: VU041882.D
 Acq: 07 Jan 2021 19:04

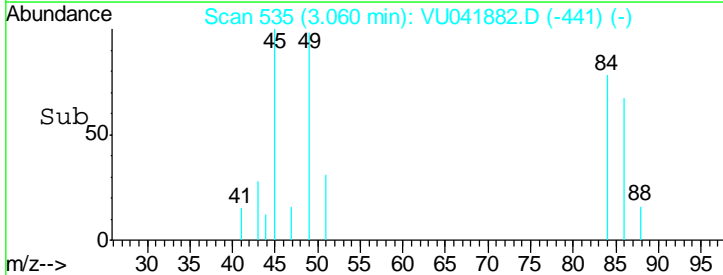
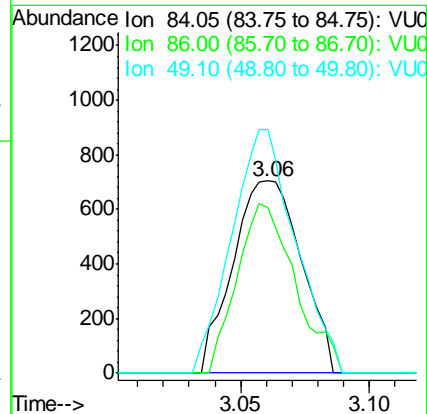
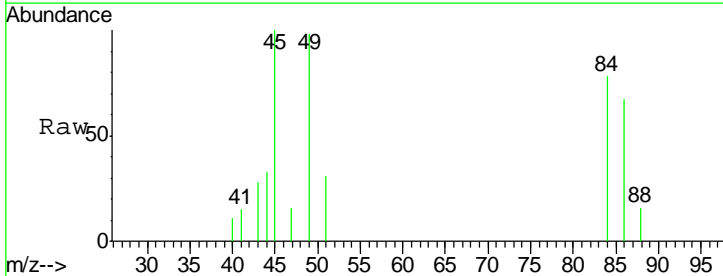
Instrument :
 MSVOA_U
 ClientSampled :
 BFXL6

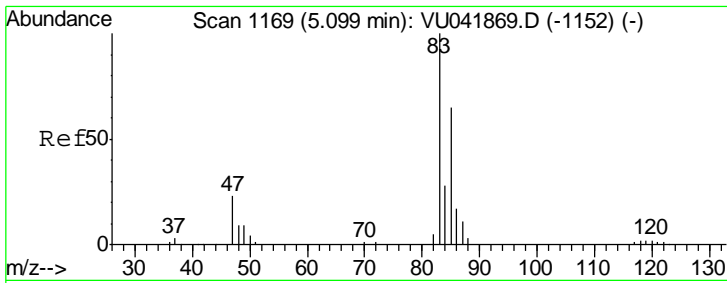
Tgt Ion: 43 Resp: 3781
 Ion Ratio Lower Upper
 43 100
 58 13.9 0.0 73.2



#16
 Methylene chloride
 Concen: 0.116 ug/L
 RT: 3.06 min Scan# 535
 Delta R.T. 0.00 min
 Lab File: VU041882.D
 Acq: 07 Jan 2021 19:04

Tgt Ion: 84 Resp: 1302
 Ion Ratio Lower Upper
 84 100
 86 86.4 45.1 83.7#
 49 126.7 83.1 154.3

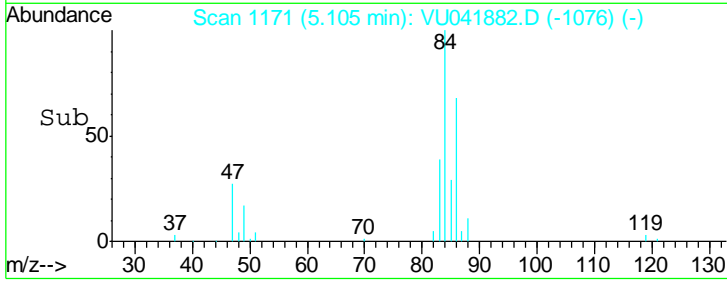
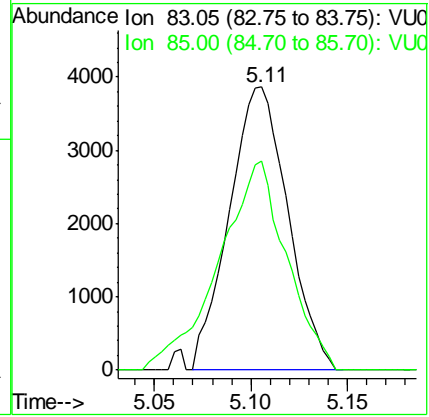
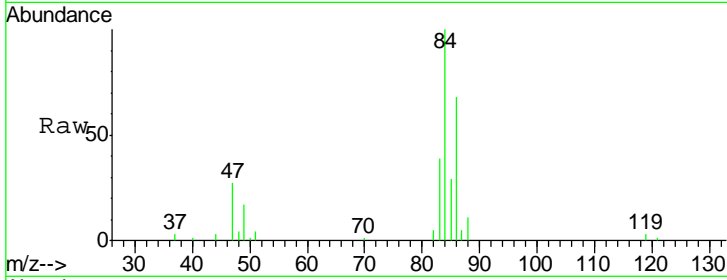




#25
 Chloroform
 Concen: 0.445 ug/L
 RT: 5.11 min Scan# 1171
 Delta R.T. 0.01 min
 Lab File: VU041882.D
 Acq: 07 Jan 2021 19:04

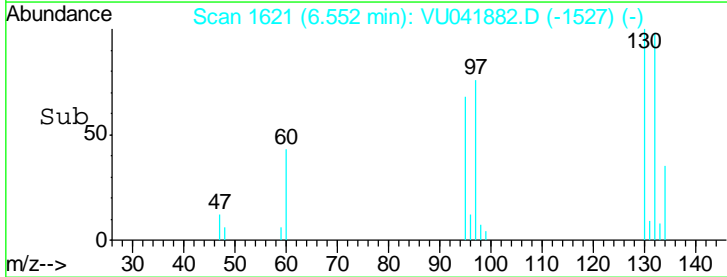
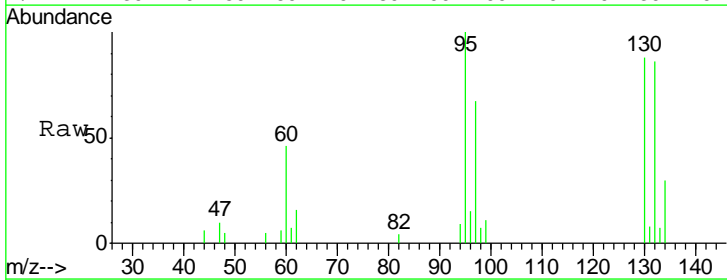
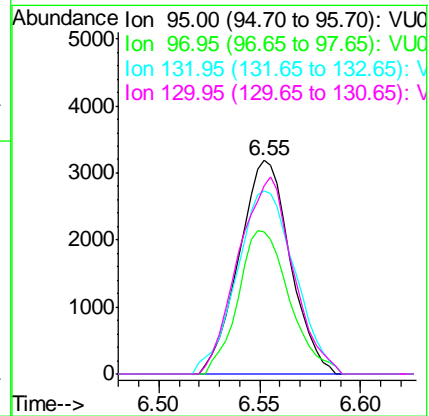
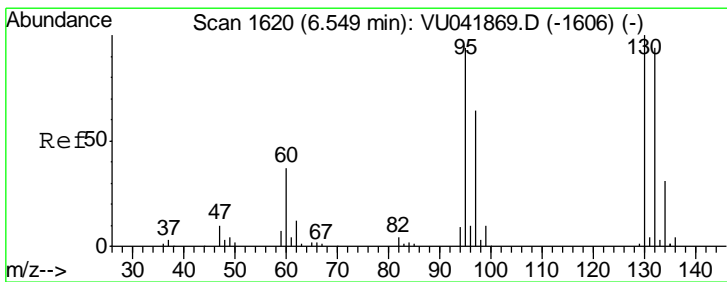
Instrument : MSVOA_U
 ClientSampled : BFXL6

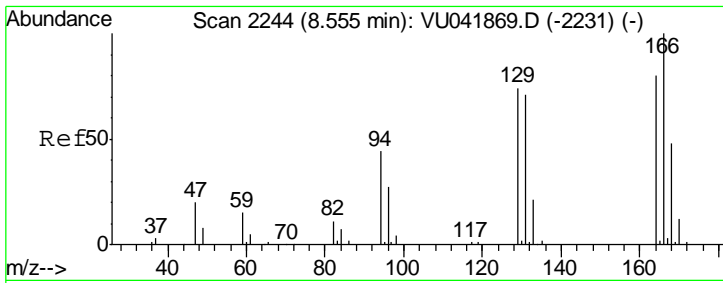
Tgt Ion	Resp	Lower	Upper
83	100		
85	73.8	44.2	82.0



#34
 Trichloroethene
 Concen: 0.522 ug/L
 RT: 6.55 min Scan# 1621
 Delta R.T. 0.00 min
 Lab File: VU041882.D
 Acq: 07 Jan 2021 19:04

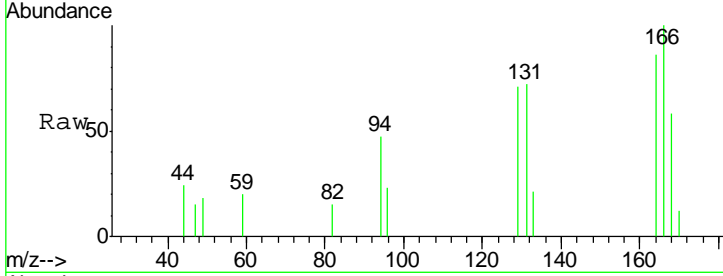
Tgt Ion	Resp	Lower	Upper
95	100		
97	66.7	43.9	81.5
132	85.7	63.1	117.3
130	87.9	67.4	125.2





#47
 Tetrachloroethene
 Concen: 0.191 ug/L
 RT: 8.56 min Scan# 2245
 Delta R.T. 0.00 min
 Lab File: VU041882.D
 Acq: 07 Jan 2021 19:04

Instrument :
 MSVOA_U
ClientSampled :
 BFXL6



Tgt Ion:164 Resp: 1445

Ion	Ratio	Lower	Upper
164	100		
129	82.8	72.2	134.0
131	83.9	66.9	124.3
166	115.9	89.6	166.4

