

Data Path : Z:\VOASRV\HPCHEM1\MSVOA_U\DATA\VU010921\
 Data File : VU041887.D
 Acq On : 07 Jan 2021 21:04
 Operator : SY/MD
 Sample : M1026-18
 Misc : 25.0mL/MSVOA_U/WATER
 ALS Vial : 20 Sample Multiplier: 1

Instrument :
 MSVOA_U
 ClientSampleId :
 BFXL9

Integration Parameters: rteint.p
 Integrator: RTE
 Smoothing : ON
 Sampling : 1
 Start Thrs: 0.1
 Stop Thrs : 0

Filtering: 5
 Min Area: 3 % of largest Peak
 Max Peaks: 100
 Peak Location: TOP

If leading or trailing edge < 100 prefer < Baseline drop else tangent >
 Peak separation: 5

Method : Z:\VOASRV\HPCHEM1\MSVOA_U\METHOD\SOMUTR121220WMA.M
 Title : TRACE VOA SOM01.0

Signal : TIC

peak #	R.T. min	first scan	max scan	last scan	PK TY	peak height	corr. area	corr. % max.	% of total
1	1.604	75	82	93	rVB	61976	66332	1.61%	0.681%
2	1.922	172	181	193	rVB	60146	74714	1.81%	0.767%
3	2.578	372	385	399	rBV	112103	187643	4.54%	1.926%
4	3.369	616	631	653	rBV	107876	214711	5.20%	2.204%
5	4.681	1011	1039	1074	rBV2	217691	726535	17.59%	7.457%
6	5.079	1148	1163	1182	rBV	103557	229511	5.56%	2.356%
7	5.738	1346	1368	1397	rBV3	200302	539279	13.06%	5.535%
8	6.259	1514	1530	1550	rBV2	164296	310379	7.52%	3.186%
9	6.552	1603	1621	1652	rBV	2204884	4129776	100.00%	42.389%
10	6.700	1654	1667	1687	rVB	128404	254861	6.17%	2.616%
11	7.571	1926	1938	1952	rBV	59780	104970	2.54%	1.077%
12	7.902	2028	2041	2056	rBV	230711	394166	9.54%	4.046%
13	8.182	2117	2128	2143	rBV2	40020	67899	1.64%	0.697%
14	8.555	2231	2244	2257	rBV	169681	282279	6.84%	2.897%
15	8.639	2257	2270	2294	rBV	387154	706248	17.10%	7.249%
16	9.417	2500	2512	2531	rBV	227049	382886	9.27%	3.930%
17	10.754	2913	2928	2944	rBV	114336	181517	4.40%	1.863%
18	11.806	3243	3255	3272	rBV	207200	334902	8.11%	3.438%
19	12.053	3318	3332	3357	rBV2	82640	167200	4.05%	1.716%
20	12.188	3362	3374	3391	rVB	235601	386671	9.36%	3.969%

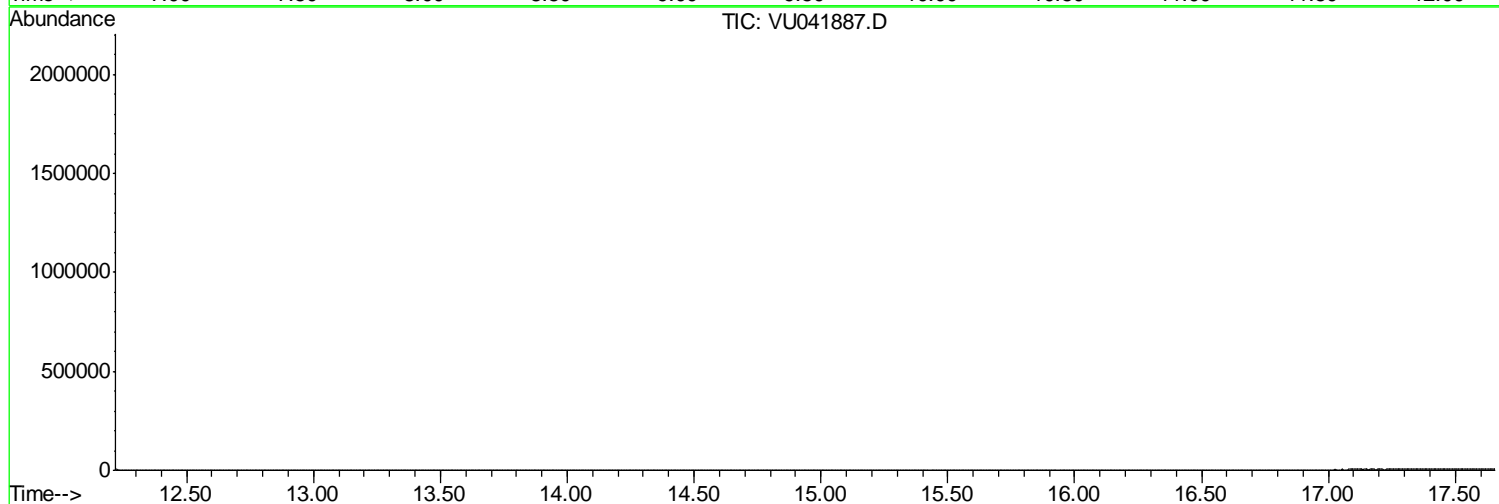
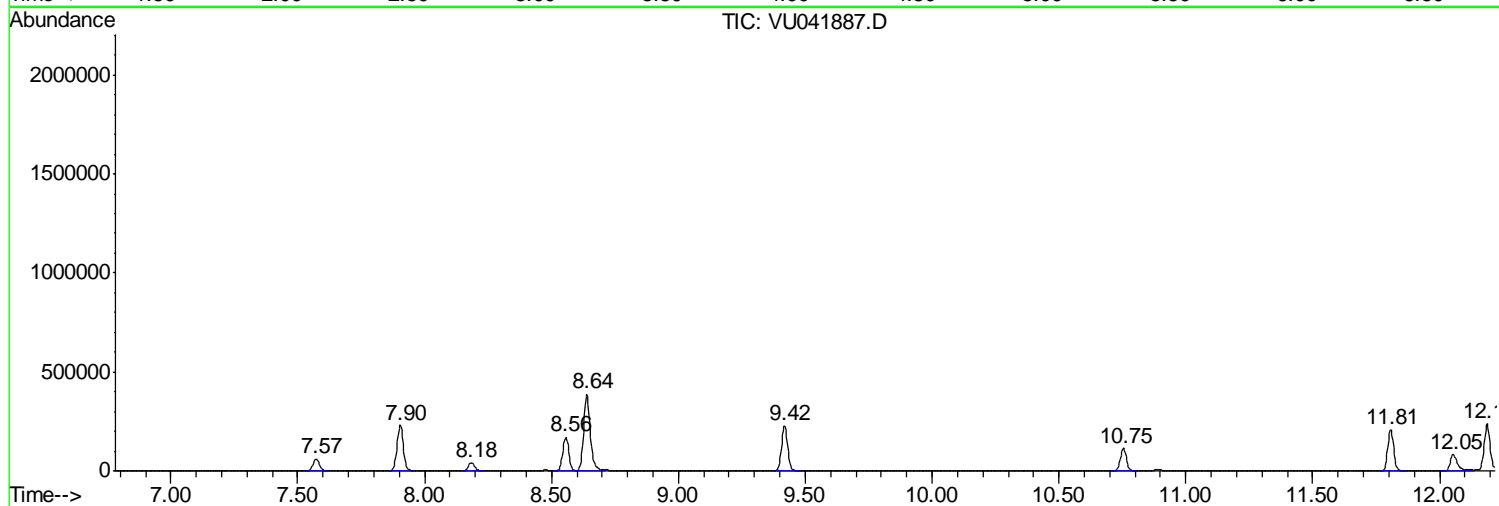
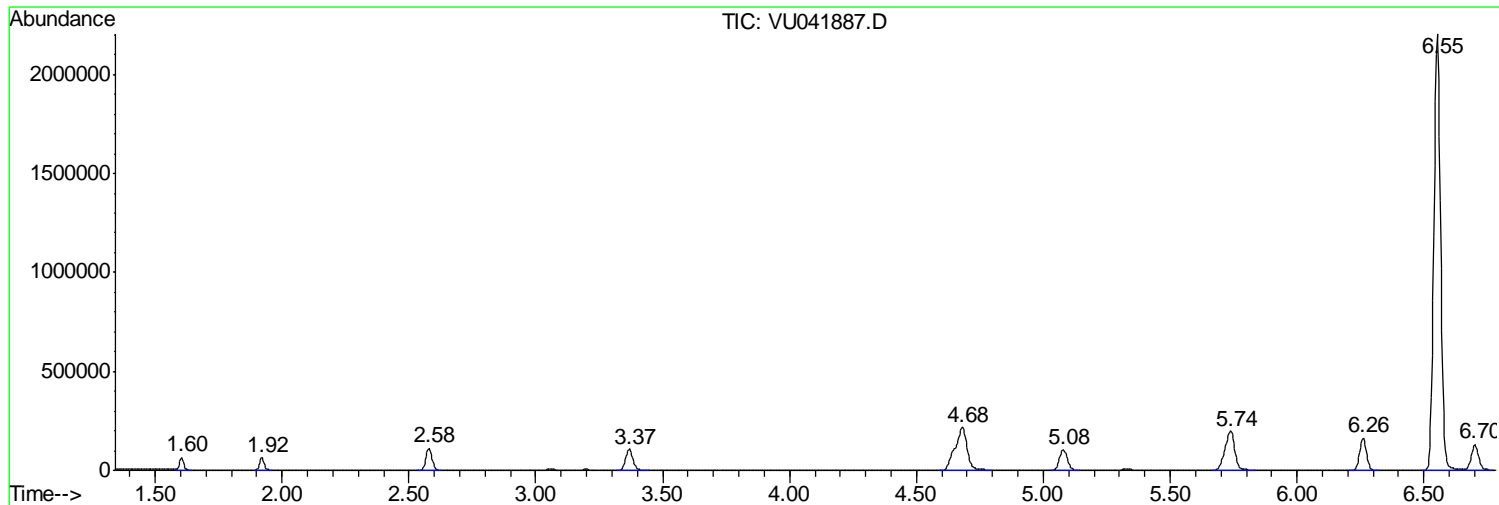
Sum of corrected areas: 9742479

Data Path : Z:\VOASRV\HPCHEM1\MSVOA_U\DATA\VU010921\
Data File : VU041887.D
Acq On : 07 Jan 2021 21:04
Operator : SY/MD
Sample : M1026-18
Misc : 25.0mL/MSVOA_U/WATER
ALS Vial : 20 Sample Multiplier: 1

Instrument :
MSVOA_U
ClientSampleId :
BFXL9

Quant Method : Z:\VOASRV\HPCHEM1\MSVOA_U\METHOD\SOMUTR121220WMA.M
Quant Title : TRACE VOA SOM01.0

TIC Library : C:\DATABASE\NIST11.L
TIC Integration Parameters: LSCINT.P



Data Path : Z:\VOASRV\HPCHEM1\MSVOA_U\DATA\VU010921\
 Data File : VU041887.D
 Acq On : 07 Jan 2021 21:04
 Operator : SY/MD
 Sample : M1026-18
 Misc : 25.0mL/MSVOA_U/WATER
 ALS Vial : 20 Sample Multiplier: 1

Instrument :
 MSVOA_U
 ClientSampled :
 BFXL9

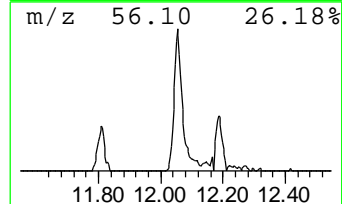
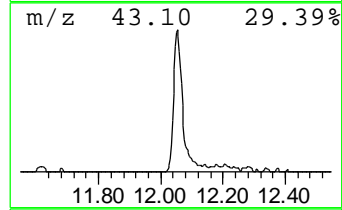
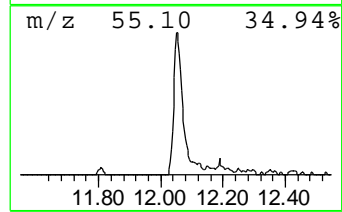
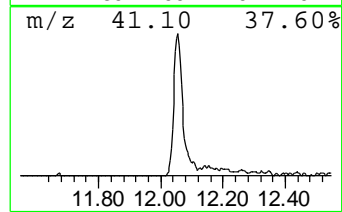
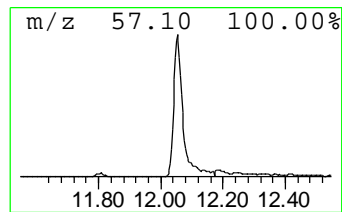
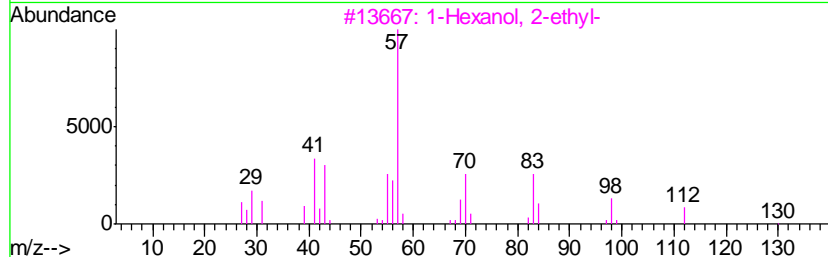
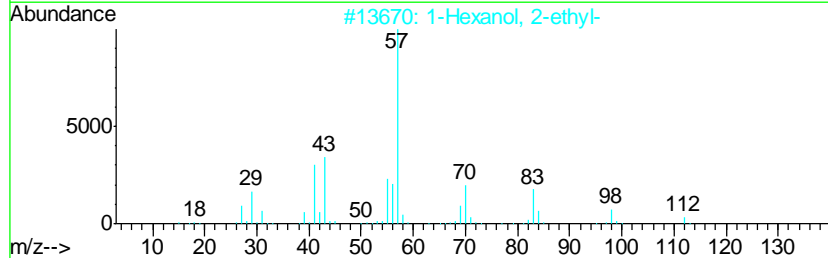
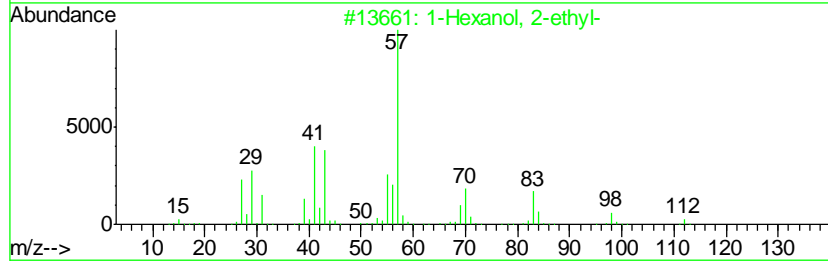
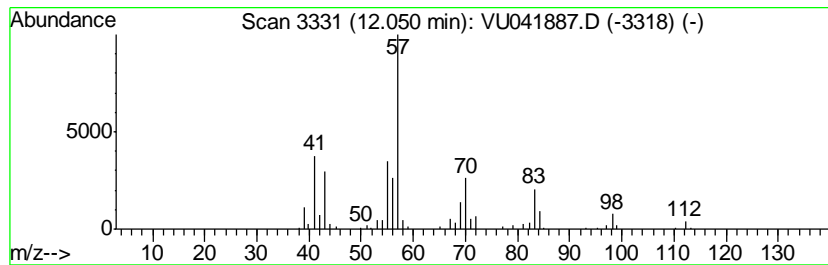
Quant Method : Z:\VOASRV\HPCHEM1\MSVOA_U\METHOD\SOMUTR121220WMA.M
 Quant Title : TRACE VOA SOM01.0

TIC Library : C:\DATABASE\NIST11.L
 TIC Integration Parameters: LSCINT.P

 Peak Number 2 1-Hexanol, 2-ethyl- Concentration Rank 1

R.T.	EstConc	Area	Relative to ISTD	R.T.
12.05	2.50 ug/L	167200	1,4-Dichlorobenzene-d4	11.81

Hit#	of	Tentative ID	MW	MolForm	CAS#	Qual
1	5	1-Hexanol, 2-ethyl-	130	C8H18O	000104-76-7	90
2		1-Hexanol, 2-ethyl-	130	C8H18O	000104-76-7	90
3		1-Hexanol, 2-ethyl-	130	C8H18O	000104-76-7	78
4		1-Hexanol, 2-ethyl-	130	C8H18O	000104-76-7	78
5		1-Pentanol, 2-ethyl-4-methyl-	130	C8H18O	000106-67-2	59



Data Path : Z:\VOASRV\HPCHEM1\MSVOA_U\DATA\VU010921\
Data File : VU041887.D
Acq On : 07 Jan 2021 21:04
Operator : SY/MD
Sample : M1026-18
Misc : 25.0mL/MSVOA_U/WATER
ALS Vial : 20 Sample Multiplier: 1

Instrument :
MSVOA_U
ClientSampleId :
BFXL9

Quant Method : Z:\VOASRV\HPCHEM1\MSVOA_U\METHOD\SOMUTR121220WMA.M
Quant Title : TRACE VOA SOM01.0

TIC Library : C:\DATABASE\NIST11.L
TIC Integration Parameters: LSCINT.P

TIC Top Hit name	RT	EstConc	Units	Response	--Internal Standard--			
					#	RT	Resp	Conc
1-Hexanol, 2-ethyl-	12.05	2.5	ug/L	167200	3	11.81	334902	5.0