

Data Path : Z:\voasrv\HPCHEM1\MSVOA_U\Data\VU010924\
 Data File : VU057456.D
 Acq On : 09 Jan 2024 21:50
 Operator : MD/SY
 Sample : 01059-01
 Misc : 5.0mL/MSVOA_U/WATER
 ALS Vial : 28 Sample Multiplier: 1

Instrument :
 MSVOA_U
 ClientSampleId :

Quant Time: Jan 10 00:40:54 2024
 Quant Method : Z:\voasrv\HPCHEM1\MSVOA_U\Method\SFAMULM010824WMA.M
 Quant Title : VOC Analysis
 QLast Update : Wed Jan 10 00:35:16 2024
 Response via : Initial Calibration

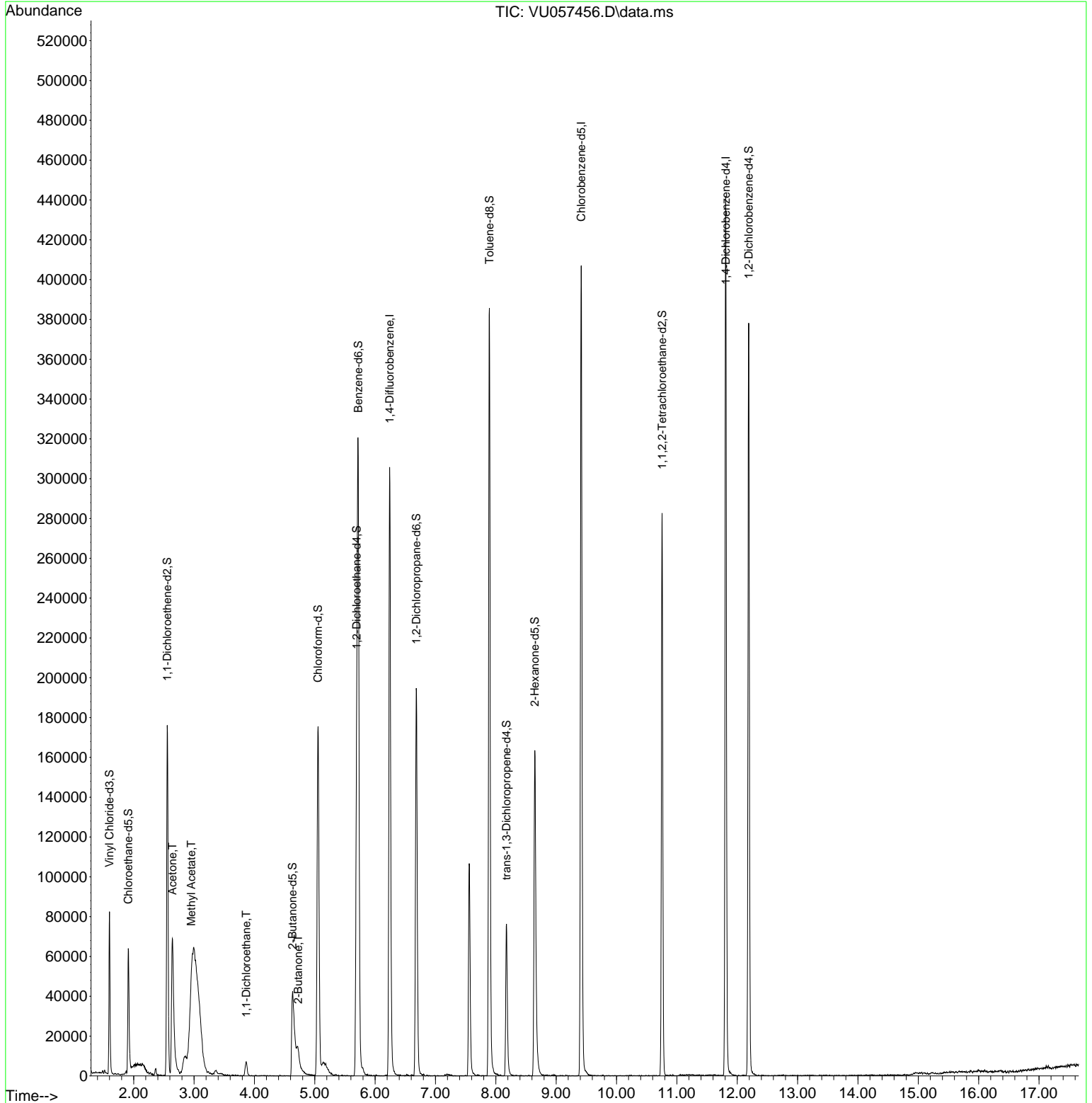
Compound	R.T.	QIon	Response	Conc	Units	Dev(Min)
Internal Standards						
1) 1,4-Difluorobenzene	6.242	114	251734	50.000	ug/L	0.00
28) Chlorobenzene-d5	9.415	117	245077	50.000	ug/L	0.00
58) 1,4-Dichlorobenzene-d4	11.810	152	116027	50.000	ug/L	0.00
System Monitoring Compounds						
4) Vinyl Chloride-d3	1.599	65	58951	34.025	ug/L	0.00
Spiked Amount	50.000	Range 60 - 135	Recovery =	68.040%		
7) Chloroethane-d5	1.911	69	49455	36.885	ug/L	0.00
Spiked Amount	50.000	Range 70 - 130	Recovery =	73.760%		
11) 1,1-Dichloroethene-d2	2.557	63	105835	28.819	ug/L	0.00
Spiked Amount	50.000	Range 60 - 125	Recovery =	57.640%#		
21) 2-Butanone-d5	4.631	46	85951	102.378	ug/L	-0.02
Spiked Amount	100.000	Range 40 - 130	Recovery =	102.380%		
24) Chloroform-d	5.055	84	168854	41.212	ug/L	0.00
Spiked Amount	50.000	Range 70 - 125	Recovery =	82.420%		
26) 1,2-Dichloroethane-d4	5.695	65	122568	45.284	ug/L	0.00
Spiked Amount	50.000	Range 70 - 125	Recovery =	90.560%		
32) Benzene-d6	5.721	84	296303	45.040	ug/L	0.00
Spiked Amount	50.000	Range 70 - 125	Recovery =	90.080%		
36) 1,2-Dichloropropane-d6	6.682	67	86450	46.559	ug/L	0.00
Spiked Amount	50.000	Range 70 - 120	Recovery =	93.120%		
41) Toluene-d8	7.894	98	262382	42.560	ug/L	0.00
Spiked Amount	50.000	Range 80 - 120	Recovery =	85.120%		
43) trans-1,3-Dichloroprop...	8.177	79	49864	44.992	ug/L	0.00
Spiked Amount	50.000	Range 60 - 125	Recovery =	89.980%		
47) 2-Hexanone-d5	8.647	63	60584	99.811	ug/L	-0.03
Spiked Amount	100.000	Range 45 - 130	Recovery =	99.810%		
56) 1,1,2,2-Tetrachloroeth...	10.756	84	126662	45.648	ug/L	0.00
Spiked Amount	50.000	Range 65 - 120	Recovery =	91.300%		
66) 1,2-Dichlorobenzene-d4	12.190	152	94946	41.839	ug/L	0.00
Spiked Amount	50.000	Range 80 - 120	Recovery =	83.680%		
Target Compounds						
13) Acetone	2.640	43	116426	113.878	ug/L	93
15) Methyl Acetate	2.955	43	6629	4.970	ug/L #	44
19) 1,1-Dichloroethane	3.865	63	8478	2.624	ug/L	96
22) 2-Butanone	4.724	43	18195	18.062	ug/L	92

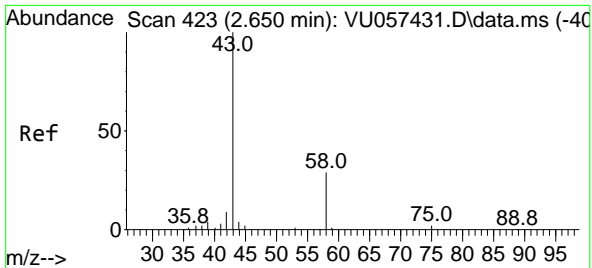
(#) = qualifier out of range (m) = manual integration (+) = signals summed

Data Path : Z:\voasrv\HPCHEM1\MSVOA_U\Data\VU010924\
 Data File : VU057456.D
 Acq On : 09 Jan 2024 21:50
 Operator : MD/SY
 Sample : 01059-01
 Misc : 5.0mL/MSVOA_U/WATER
 ALS Vial : 28 Sample Multiplier: 1

Instrument :
 MSVOA_U
 ClientSampleId :

Quant Time: Jan 10 00:40:54 2024
 Quant Method : Z:\voasrv\HPCHEM1\MSVOA_U\Method\SFAMULM010824WMA.M
 Quant Title : VOC Analysis
 QLast Update : Wed Jan 10 00:35:16 2024
 Response via : Initial Calibration

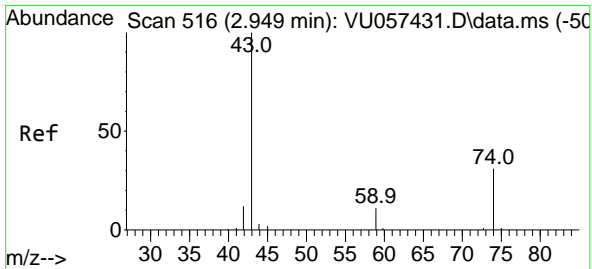
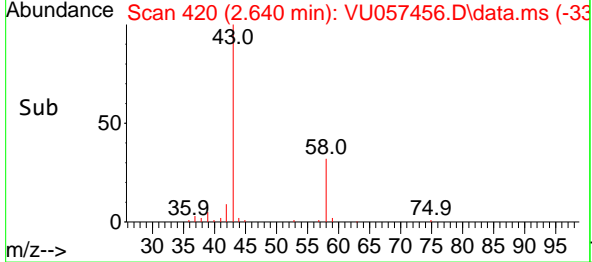
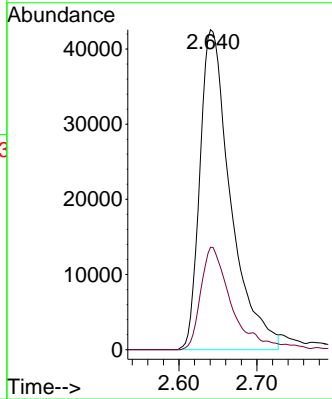
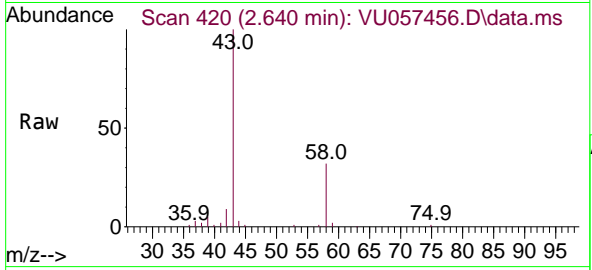




#13
 Acetone
 Concen: 113.878 ug/L
 RT: 2.640 min Scan# 41
 Delta R.T. -0.010 min
 Lab File: VU057456.D
 Acq: 09 Jan 2024 21:50

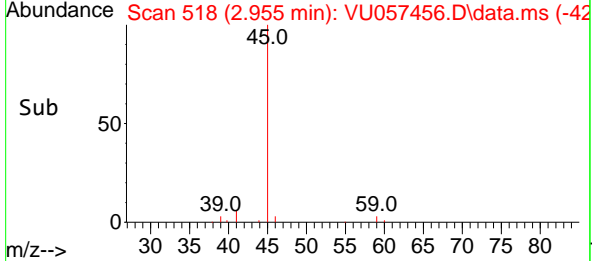
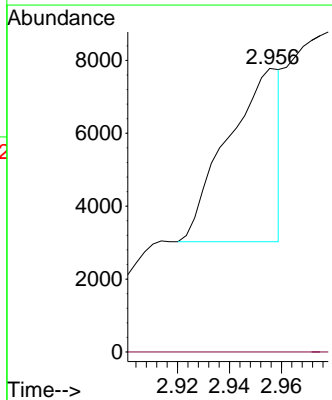
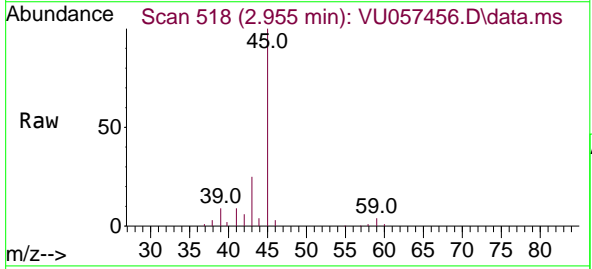
Instrument : MSVOA_U
 ClientSampleId :

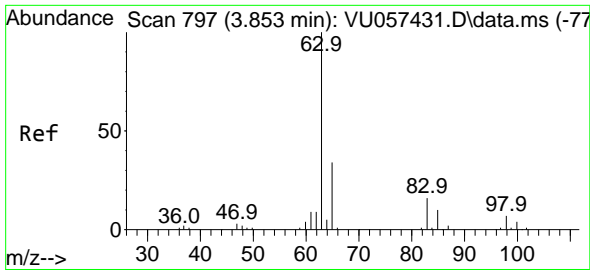
Tgt Ion: 43 Resp: 116426
 Ion Ratio Lower Upper
 43 100
 58 28.7 0.0 65.2



#15
 Methyl Acetate
 Concen: 4.970 ug/L
 RT: 2.955 min Scan# 518
 Delta R.T. 0.006 min
 Lab File: VU057456.D
 Acq: 09 Jan 2024 21:50

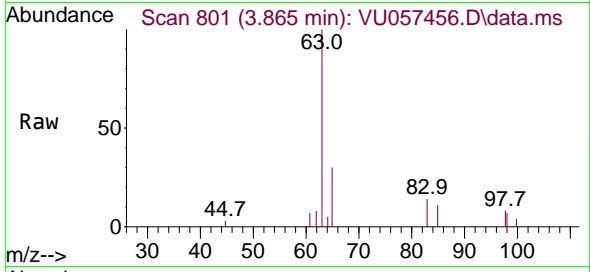
Tgt Ion: 43 Resp: 6629
 Ion Ratio Lower Upper
 43 100
 74 0.0 24.6 36.8#





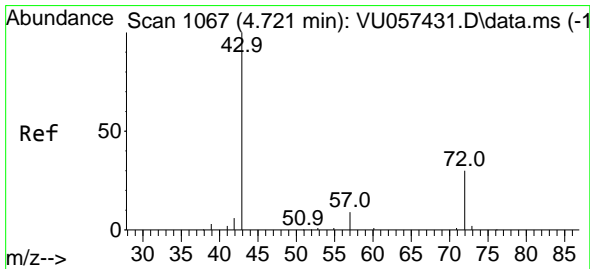
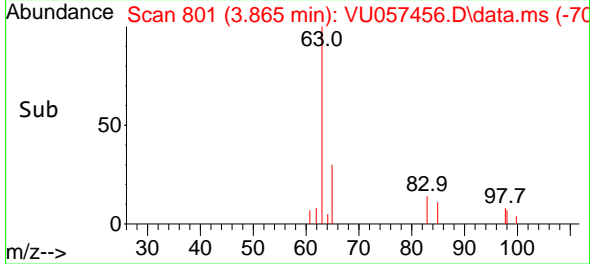
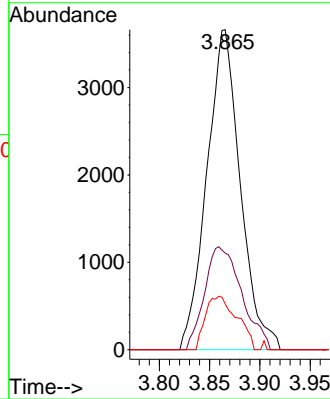
#19
 1,1-Dichloroethane
 Concen: 2.624 ug/L
 RT: 3.865 min Scan# 801
 Delta R.T. 0.013 min
 Lab File: VU057456.D
 Acq: 09 Jan 2024 21:50

Instrument :
 MSVOA_U
 ClientSampleId :



Tgt Ion: 63 Resp: 8478

Ion	Ratio	Lower	Upper
63	100		
65	30.2	22.4	41.6
83	14.4	11.3	21.1



#22
 2-Butanone
 Concen: 18.062 ug/L
 RT: 4.724 min Scan# 1068
 Delta R.T. 0.003 min
 Lab File: VU057456.D
 Acq: 09 Jan 2024 21:50

Tgt Ion: 43 Resp: 18195

Ion	Ratio	Lower	Upper
43	100		
72	34.7	15.2	45.6

