

Data Path : Z:\VOASRV\HPCHEM1\MSVOA U\DATA\VU011121\
 Data File : VU041952.D
 Acq On : 12 Jan 2021 04:11
 Operator : SY/MD
 Sample : M1027-15
 Misc : 25.0mL/MSVOA U/WATER
 ALS Vial : 44 Sample Multiplier: 1

Instrument :
 MSVOA_U
 ClientSampled :
 BFXK9

Quant Time: Jan 12 05:53:56 2021
 Quant Method : Z:\VOASRV\HPCHEM1\MSVOA_U\METHOD\SOMUTR011121WMA.M
 Quant Title : TRACE VOA SOM01.0
 QLast Update : Tue Jan 12 05:50:11 2021
 Response via : Initial Calibration

Internal Standards	R.T.	QIon	Response	Conc	Units	Dev(Min)
1) 1,4-Difluorobenzene	6.26	114	97340	5.00	ug/L	0.00
28) Chlorobenzene-d5	9.42	117	103161	5.00	ug/L	0.00
60) 1,4-Dichlorobenzene-d4	11.81	152	40071	5.00	ug/L	0.00

System Monitoring Compounds

4) Vinyl Chloride-d3	1.60	65	49776	6.06	ug/L	0.00
Spiked Amount	5.000	Range	40 - 130	Recovery	=	121.20%
7) Chloroethane-d5	1.92	69	47679	6.27	ug/L	0.00
Spiked Amount	5.000	Range	65 - 130	Recovery	=	125.40%
11) 1,1-Dichloroethene-d2	2.58	63	71591	4.60	ug/L	0.00
Spiked Amount	5.000	Range	60 - 125	Recovery	=	92.00%
20) 2-Butanone-d5	4.65	46	183559	80.51	ug/L	0.00
Spiked Amount	50.000	Range	40 - 130	Recovery	=	161.02%#
24) Chloroform-d	5.08	84	92649	6.20	ug/L	0.00
Spiked Amount	5.000	Range	70 - 125	Recovery	=	124.00%
26) 1,2-Dichloroethane-d4	5.72	65	51984	6.59	ug/L	0.00
Spiked Amount	5.000	Range	70 - 130	Recovery	=	131.80%#
32) Benzene-d6	5.74	84	163096	5.35	ug/L	0.00
Spiked Amount	5.000	Range	70 - 125	Recovery	=	107.00%
36) 1,2-Dichloropropane-d6	6.70	67	56028	5.85	ug/L	0.00
Spiked Amount	5.000	Range	60 - 140	Recovery	=	117.00%
41) Toluene-d8	7.91	98	136228	4.93	ug/L	0.00
Spiked Amount	5.000	Range	70 - 130	Recovery	=	98.60%
43) trans-1,3-Dichloropropene-	8.19	79	21463	5.37	ug/L	0.00
Spiked Amount	5.000	Range	55 - 130	Recovery	=	107.40%
46) 2-Hexanone-d5	8.64	63	134854	66.69	ug/L	0.00
Spiked Amount	50.000	Range	45 - 130	Recovery	=	133.38%#
57) 1,1,2,2-Tetrachloroethane-	10.75	84	48700	5.75	ug/L	0.00
Spiked Amount	5.000	Range	65 - 120	Recovery	=	115.00%
64) 1,2-Dichlorobenzene-d4	12.19	152	47011	6.20	ug/L	0.00
Spiked Amount	5.000	Range	80 - 120	Recovery	=	124.00%#

Target Compounds

Target Compounds	R.T.	QIon	Response	Conc	Units	Ovalue
2) Dichlorodifluoromethane	1.39	85	6457	0.686	ug/L	96
3) Chloromethane	1.52	50	822	0.080	ug/L	87
8) Chloroethane	1.93	64	818	0.120	ug/L #	43
9) Trichlorofluoromethane	2.15	101	554	0.039	ug/L	87
10) 1,1,2-Trichloro-1,2,2-trif	2.58	101	658	0.084	ug/L #	20
12) 1,1-Dichloroethene	2.59	96	1010	0.133	ug/L #	1
13) Acetone	2.66	43	4446	3.003	ug/L #	55
16) Methylene chloride	3.06	84	1447	0.151	ug/L	97
17) Methyl tert-butyl Ether	3.38	73	23723	1.302	ug/L	98
19) 1,1-Dichloroethane	3.88	63	584	0.042	ug/L #	50
22) cis-1,2-Dichloroethene	4.68	96	8826	1.120	ug/L	96
25) Chloroform	5.11	83	3104	0.215	ug/L	89
27) 1,2-Dichloroethane	5.81	62	1230	0.133	ug/L #	73
29) 1,1,1-Trichloroethane	5.33	97	1550	0.115	ug/L	98
34) Trichloroethene	6.55	95	177985	20.394	ug/L	94
35) Methylcyclohexane	6.70	83	12987	1.012	ug/L #	17
37) 1,2-Dichloropropane	6.70	63	5733	0.691	ug/L #	88

Data Path : Z:\VOASRV\HPCHEM1\MSVOA U\DATA\VU011121\
 Data File : VU041952.D
 Acq On : 12 Jan 2021 04:11
 Operator : SY/MD
 Sample : M1027-15
 Misc : 25.0mL/MSVOA U/WATER
 ALS Vial : 44 Sample Multiplier: 1

Instrument :
 MSVOA_U
 ClientSampleId :
 BFXK9

Quant Time: Jan 12 05:53:56 2021
 Quant Method : Z:\VOASRV\HPCHEM1\MSVOA_U\METHOD\SOMUTR011121WMA.M
 Quant Title : TRACE VOA SOM01.0
 QLast Update : Tue Jan 12 05:50:11 2021
 Response via : Initial Calibration

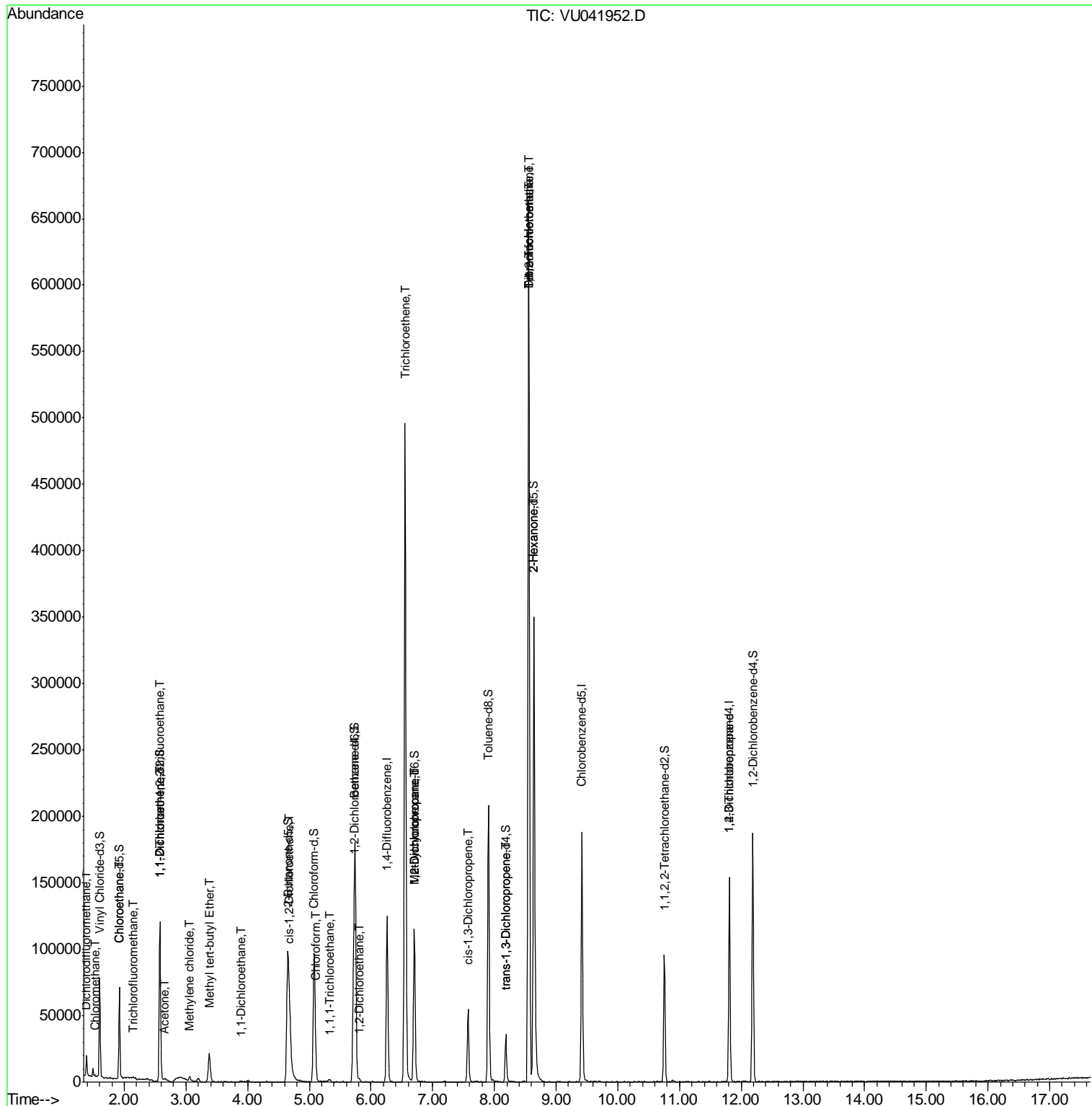
Internal Standards	R.T.	QIon	Response	Conc	Units	Dev(Min)
39) cis-1,3-Dichloropropene	7.57	75	1254	0.102	ug/L #	56
44) trans-1,3-Dichloropropene	8.19	75	789	0.073	ug/L #	71
45) 1,1,2-Trichloroethane	8.55	97	1275	0.201	ug/L #	7
47) Tetrachloroethene	8.56	164	140388	23.117	ug/L	97
48) 2-Hexanone	8.64	43	16697	4.303	ug/L #	72
49) Dibromochloromethane	8.56	129	141393	18.277	ug/L #	10
59) 1,2,3-Trichloropropane	11.81	75	5377	0.888	ug/L	98

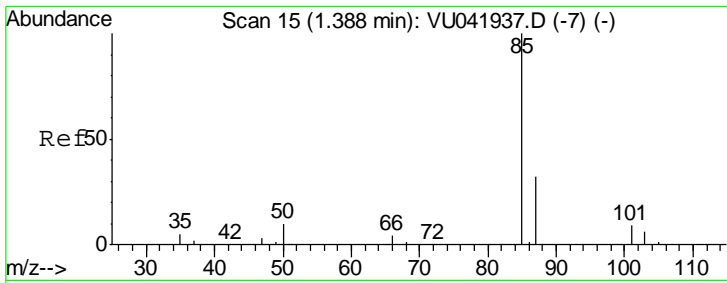
(#) = qualifier out of range (m) = manual integration (+) = signals summed

Data Path : Z:\VOASRV\HPCHEM1\MSVOA U\DATA\VU011121\
 Data File : VU041952.D
 Acq On : 12 Jan 2021 04:11
 Operator : SY/MD
 Sample : M1027-15
 Misc : 25.0mL/MSVOA U/WATER
 ALS Vial : 44 Sample Multiplier: 1

Instrument :
 MSVOA_U
 Client Sampled :
 BFXK9

Quant Time: Jan 12 05:53:56 2021
 Quant Method : Z:\VOASRV\HPCHEM1\MSVOA_U\METHOD\SOMUTR011121WMA.M
 Quant Title : TRACE VOA SOM01.0
 QLast Update : Tue Jan 12 05:50:11 2021
 Response via : Initial Calibration

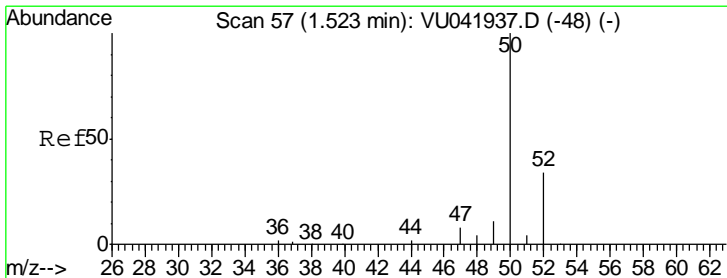
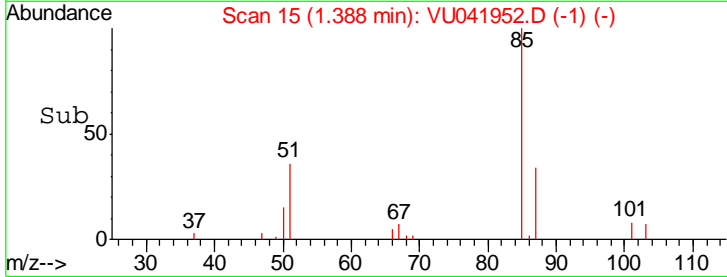
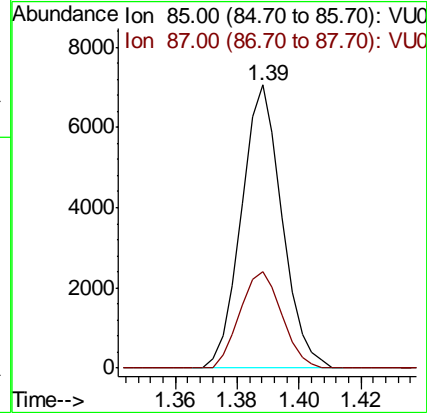
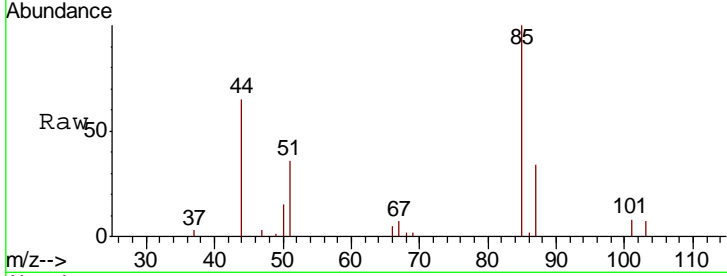




#2
 Dichlorodifluoromethane
 Concen: 0.686 ug/L
 RT: 1.39 min Scan# 15
 Delta R.T. -0.00 min
 Lab File: VU041952.D
 Acq: 12 Jan 2021 04:11

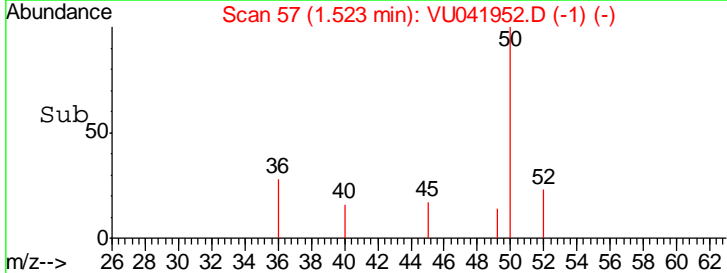
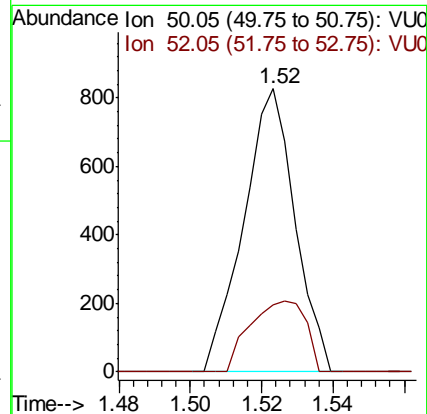
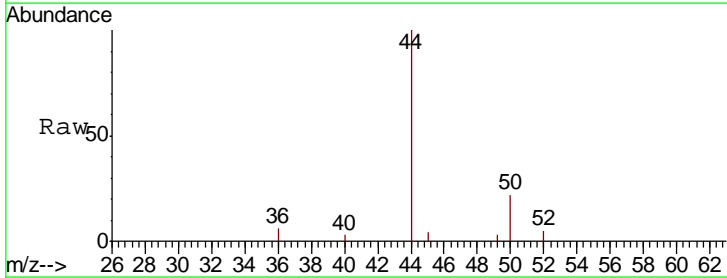
Instrument :
 MSVOA_U
 ClientSampled :
 BFXK9

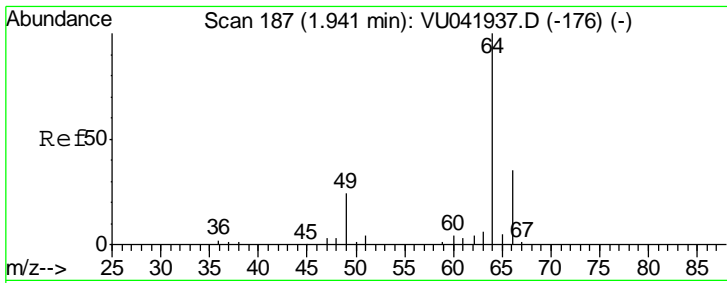
Tgt Ion: 85 Resp: 6457
 Ion Ratio Lower Upper
 85 100
 87 35.1 26.3 39.5



#3
 Chloromethane
 Concen: 0.080 ug/L
 RT: 1.52 min Scan# 57
 Delta R.T. -0.00 min
 Lab File: VU041952.D
 Acq: 12 Jan 2021 04:11

Tgt Ion: 50 Resp: 822
 Ion Ratio Lower Upper
 50 100
 52 23.5 21.4 39.8

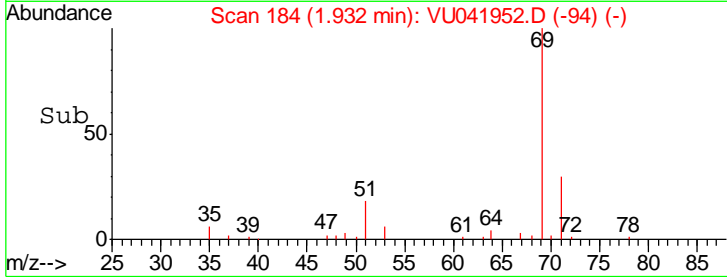
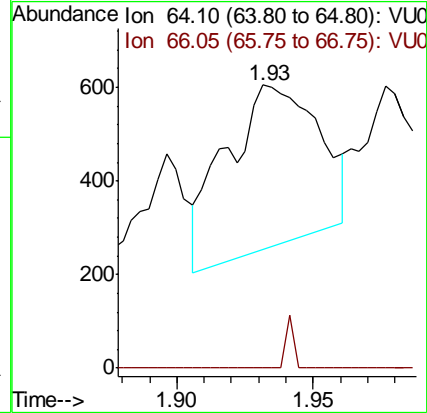
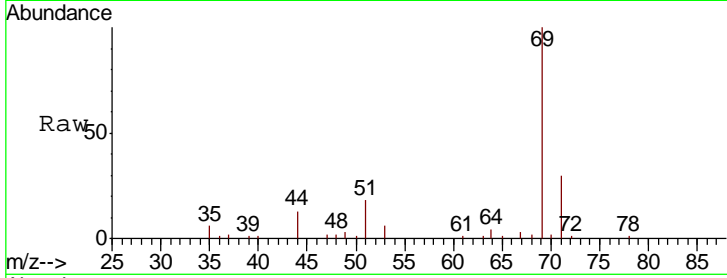




#8
 Chloroethane
 Concen: 0.120 ug/L
 RT: 1.93 min Scan# 184
 Delta R.T. -0.01 min
 Lab File: VU041952.D
 Acq: 12 Jan 2021 04:11

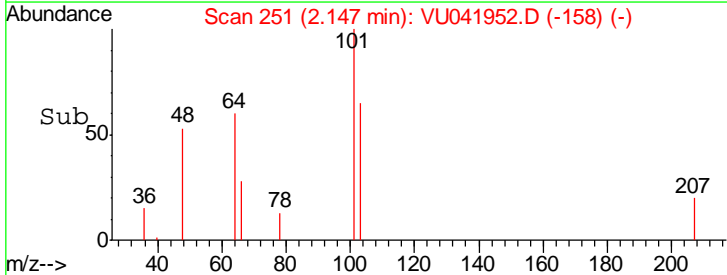
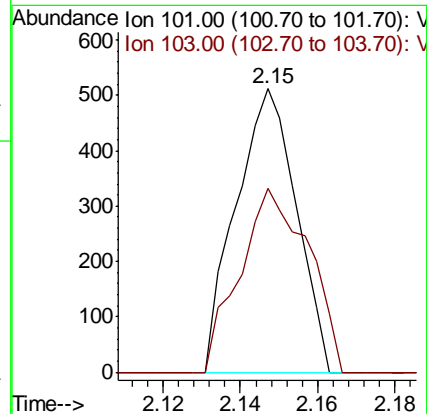
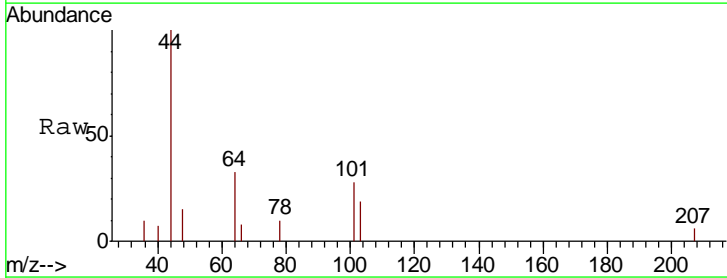
Instrument : MSVOA_U
 ClientSampled : BFXK9

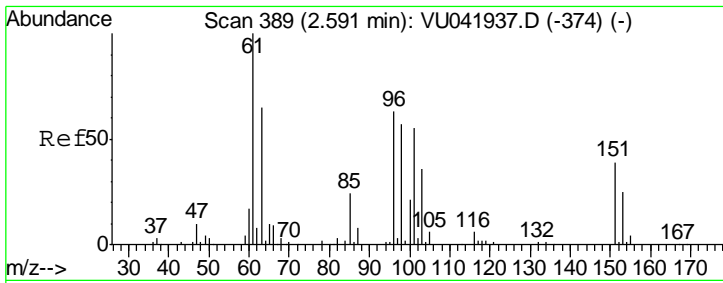
Tgt Ion	Resp	Lower	Upper
64	100		
66	0.0	22.1	41.1#



#9
 Trichlorofluoromethane
 Concen: 0.039 ug/L
 RT: 2.15 min Scan# 251
 Delta R.T. -0.00 min
 Lab File: VU041952.D
 Acq: 12 Jan 2021 04:11

Tgt Ion	Resp	Lower	Upper
101	100		
103	74.4	51.3	76.9

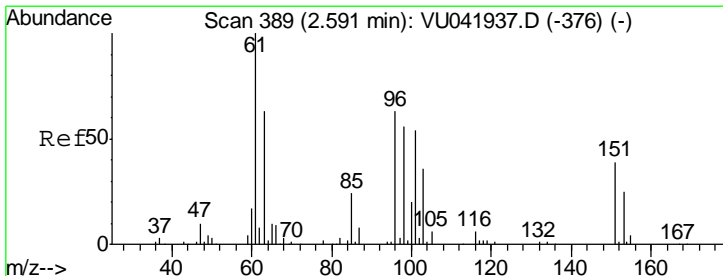
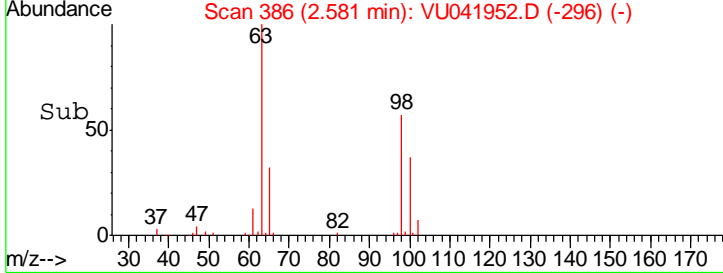
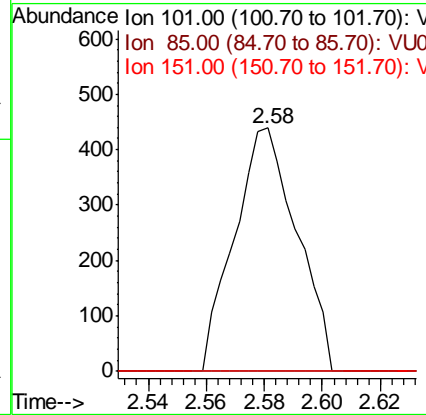
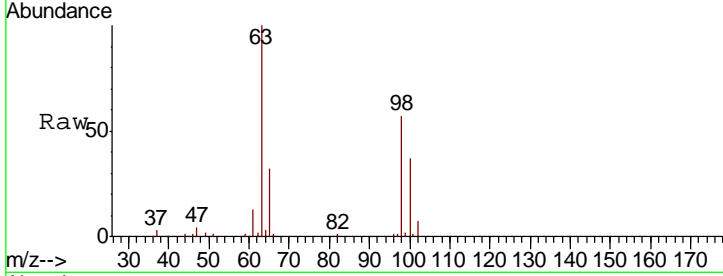




#10
 1,1,2-Trichloro-1,2,2-trifluoroethane
 Concen: 0.084 ug/L
 RT: 2.58 min Scan# 386
 Delta R.T. -0.01 min
 Lab File: VU041952.D
 Acq: 12 Jan 2021 04:11

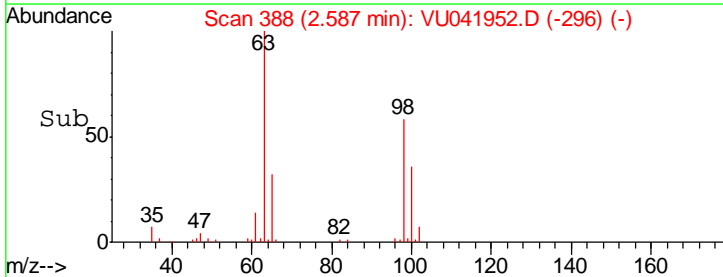
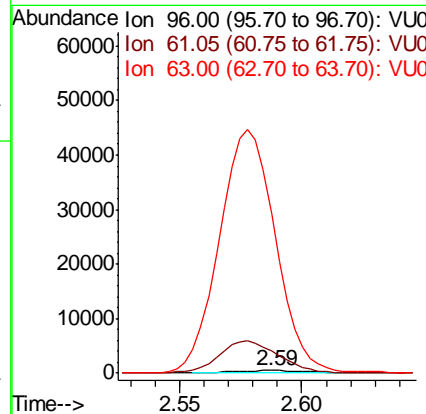
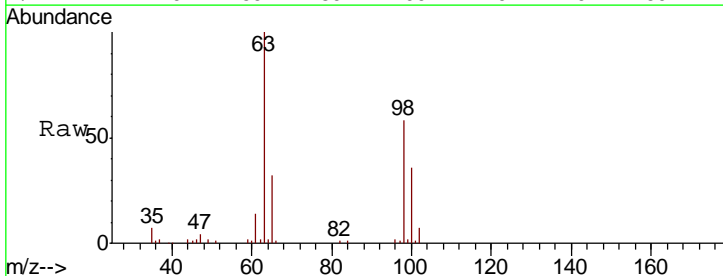
Instrument :
 MSVOA_U
 ClientSampled :
 BFXK9

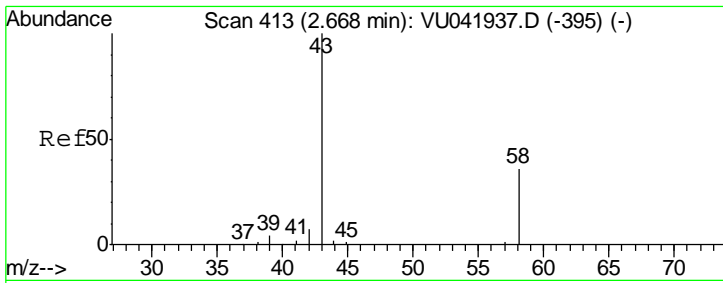
Tgt Ion	Resp	Lower	Upper
101	658		
101	100		
85	0.0	35.1	52.7#
151	0.0	58.2	87.2#



#12
 1,1-Dichloroethene
 Concen: 0.133 ug/L
 RT: 2.59 min Scan# 388
 Delta R.T. -0.00 min
 Lab File: VU041952.D
 Acq: 12 Jan 2021 04:11

Tgt Ion	Resp	Lower	Upper
96	1010		
96	100		
61	795.8	123.5	229.4#
63	5775.5	93.5	173.7#

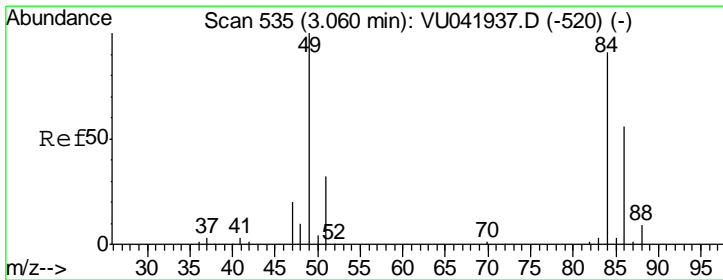
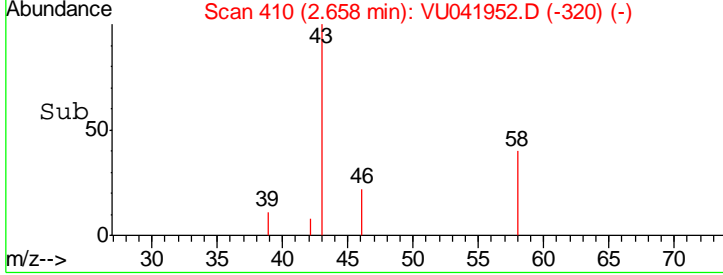
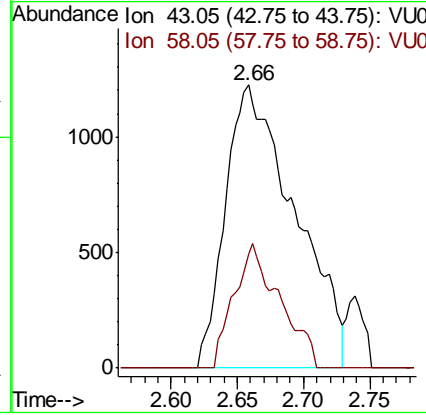
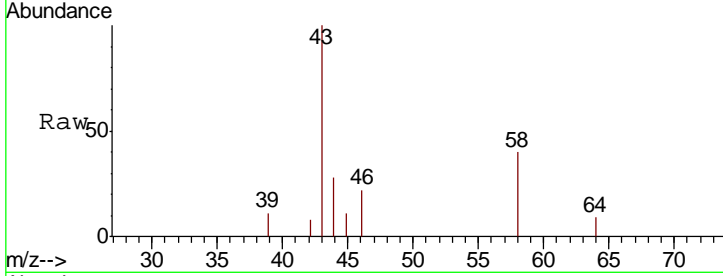




#13
 Acetone
 Concen: 3.003 ug/L
 RT: 2.66 min Scan# 410
 Delta R.T. -0.01 min
 Lab File: VU041952.D
 Acq: 12 Jan 2021 04:11

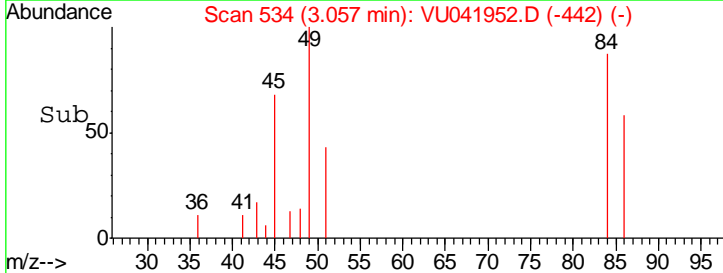
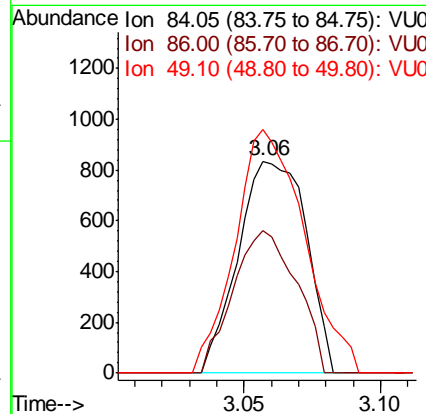
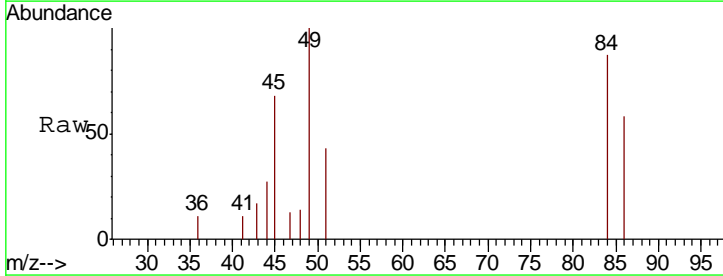
Instrument :
 MSVOA_U
 ClientSampled :
 BFXK9

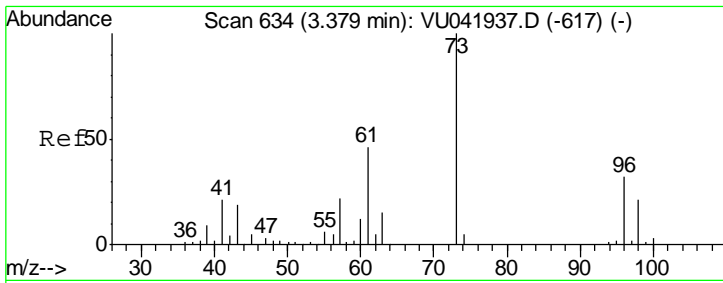
Tgt Ion	43	58	Resp	4446
Ion Ratio	100	29.0	Lower	Upper
			0.0	23.6#



#16
 Methylene chloride
 Concen: 0.151 ug/L
 RT: 3.06 min Scan# 534
 Delta R.T. -0.00 min
 Lab File: VU041952.D
 Acq: 12 Jan 2021 04:11

Tgt Ion	84	Resp	1447
Ion Ratio	100	Lower	Upper
86	67.0	43.5	80.7
49	115.0	81.8	151.8

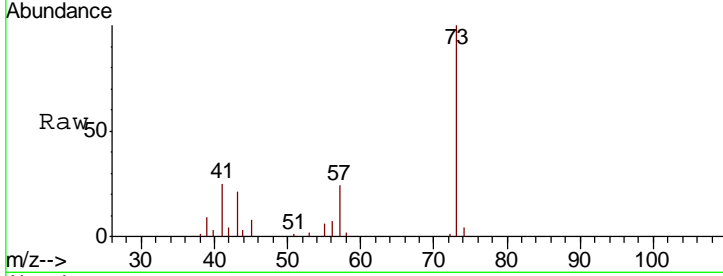




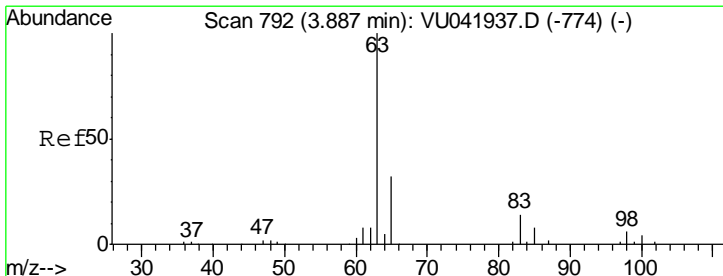
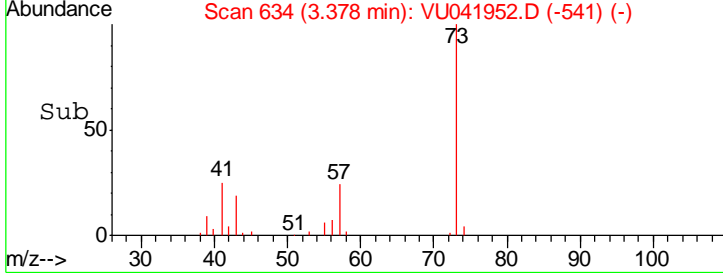
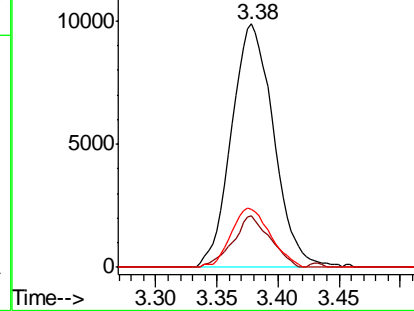
#17
 Methyl tert-butyl Ether
 Concen: 1.302 ug/L
 RT: 3.38 min Scan# 634
 Delta R.T. -0.00 min
 Lab File: VU041952.D
 Acq: 12 Jan 2021 04:11

Instrument :
 MSVOA_U
 ClientSampled :
 BFXK9

Tgt Ion	Resp	Lower	Upper
73	23723		
43	18.6	15.8	23.8
57	22.6	18.3	27.5

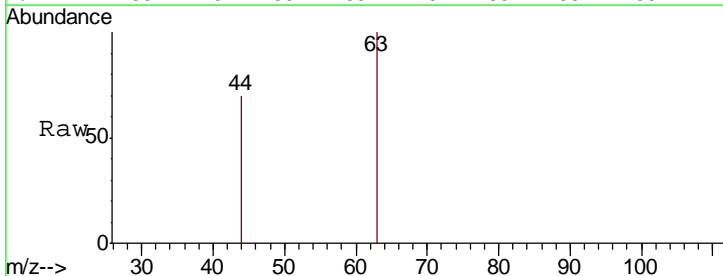


Abundance Ion 73.10 (72.80 to 73.80): VUC
 Ion 43.05 (42.75 to 43.75): VUC
 Ion 57.10 (56.80 to 57.80): VUC

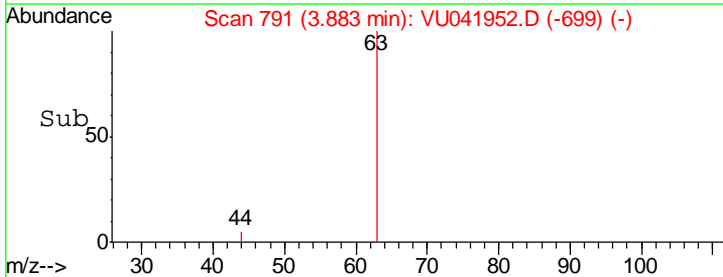
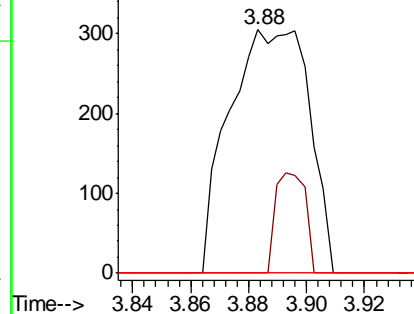


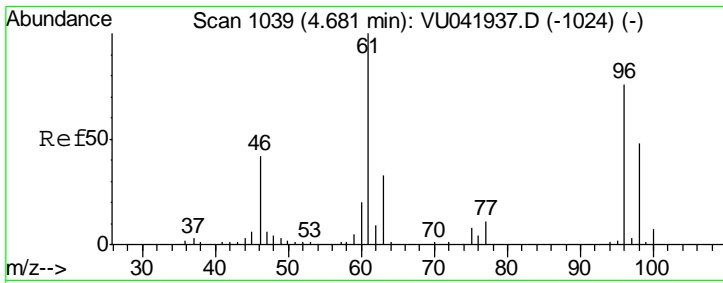
#19
 1,1-Dichloroethane
 Concen: 0.042 ug/L
 RT: 3.88 min Scan# 791
 Delta R.T. -0.00 min
 Lab File: VU041952.D
 Acq: 12 Jan 2021 04:11

Tgt Ion	Resp	Lower	Upper
63	584		
65	0.0	22.3	41.5#
83	0.0	9.0	16.8#



Abundance Ion 63.10 (62.80 to 63.80): VUC
 Ion 65.10 (64.80 to 65.80): VUC
 Ion 83.05 (82.75 to 83.75): VUC

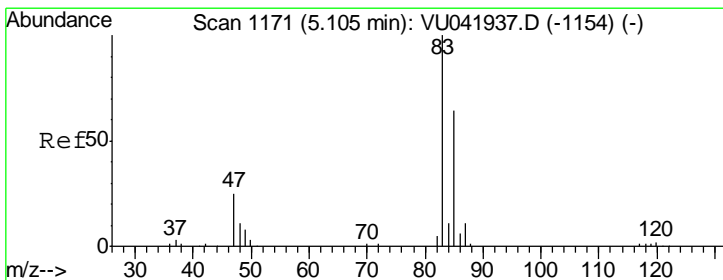
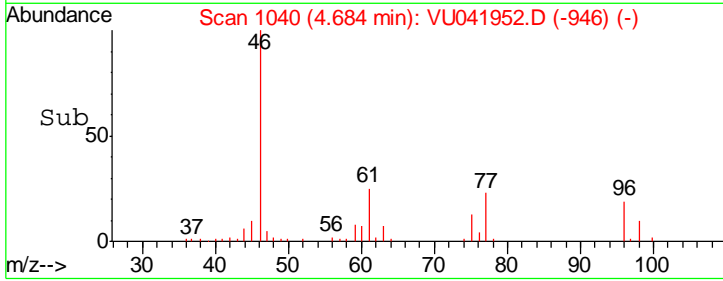
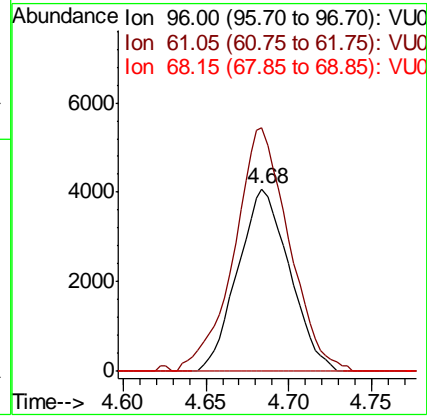
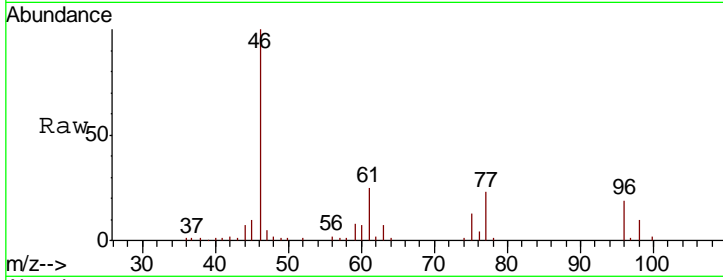




#22
 cis-1,2-Dichloroethene
 Concen: 1.120 ug/L
 RT: 4.68 min Scan# 1040
 Delta R.T. 0.00 min
 Lab File: VU041952.D
 Acq: 12 Jan 2021 04:11

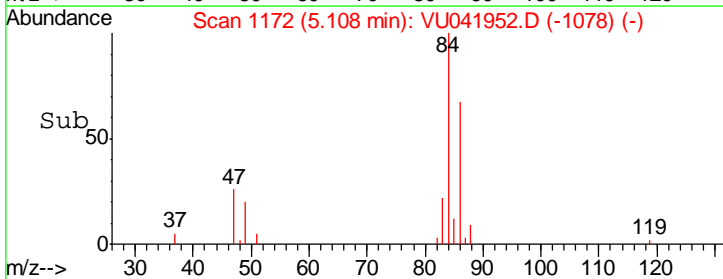
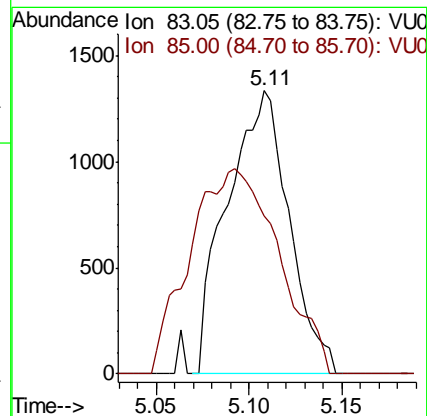
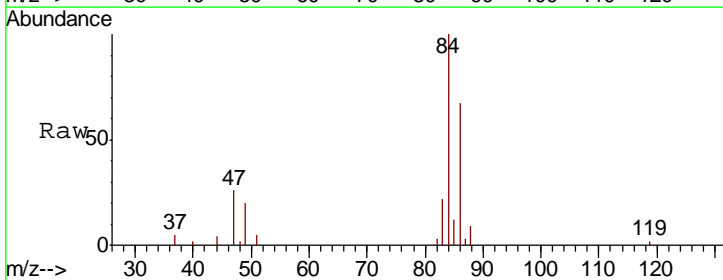
Instrument :
 MSVOA_U
 ClientSampled :
 BFXK9

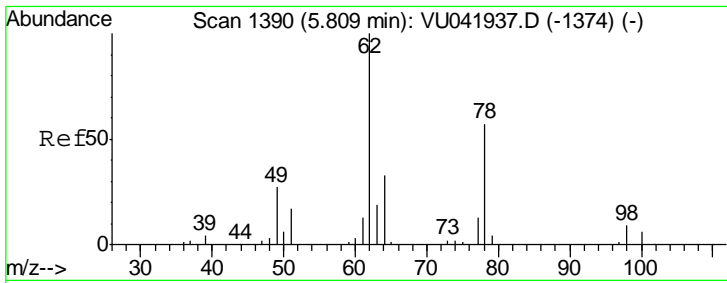
Tgt Ion	Resp	Lower	Upper
96	8826		
61	133.4	90.3	167.7
68	0.0	0.0	0.0



#25
 Chloroform
 Concen: 0.215 ug/L
 RT: 5.11 min Scan# 1172
 Delta R.T. 0.00 min
 Lab File: VU041952.D
 Acq: 12 Jan 2021 04:11

Tgt Ion	Resp	Lower	Upper
83	3104		
85	56.0	45.1	83.9

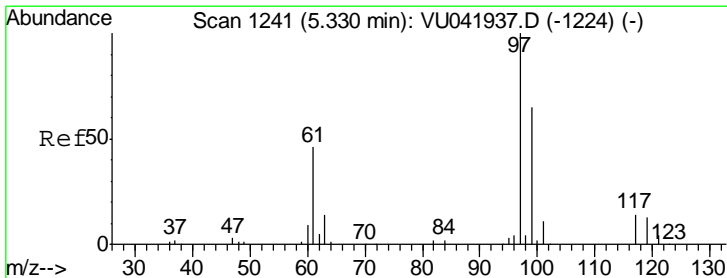
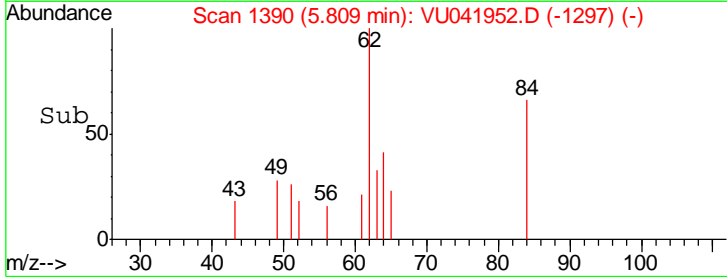
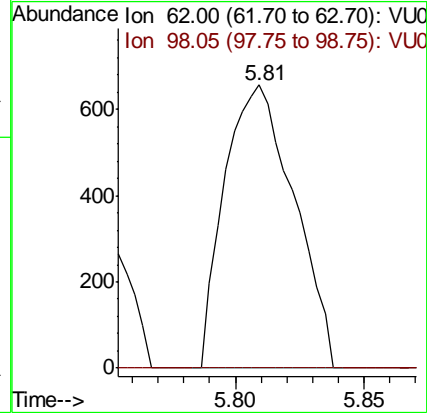
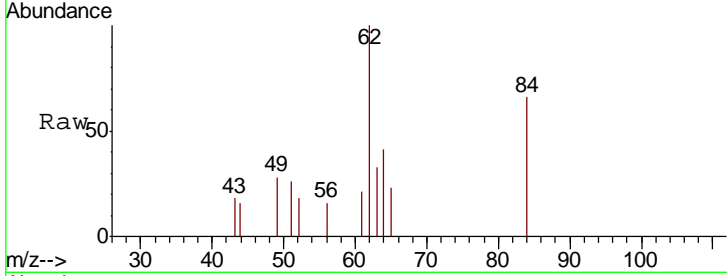




#27
 1,2-Dichloroethane
 Concen: 0.133 ug/L
 RT: 5.81 min Scan# 1390
 Delta R.T. -0.00 min
 Lab File: VU041952.D
 Acq: 12 Jan 2021 04:11

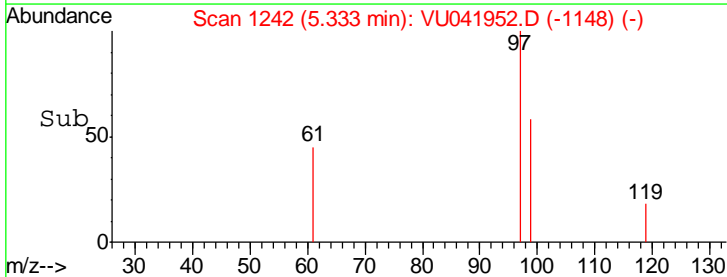
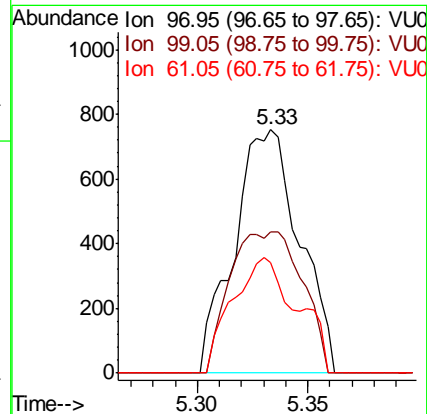
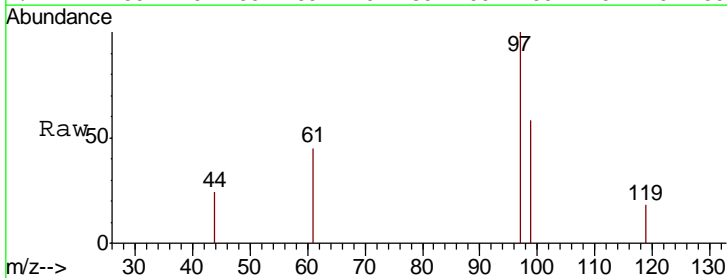
Instrument :
 MSVOA_U
 ClientSampled :
 BFXK9

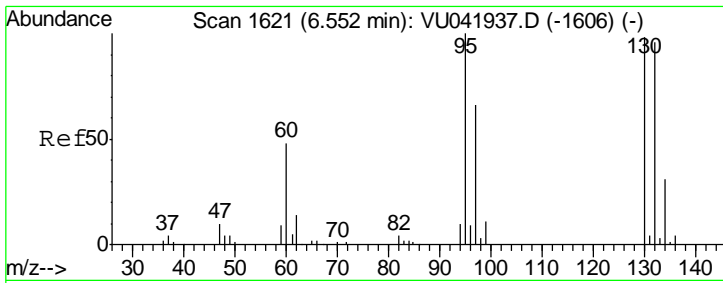
Tgt Ion	Resp	Lower	Upper
62	1230		
98	0.0	7.8	11.8#



#29
 1,1,1-Trichloroethane
 Concen: 0.115 ug/L
 RT: 5.33 min Scan# 1242
 Delta R.T. 0.00 min
 Lab File: VU041952.D
 Acq: 12 Jan 2021 04:11

Tgt Ion	Resp	Lower	Upper
97	1550		
99	64.0	51.4	77.2
61	46.5	35.3	52.9

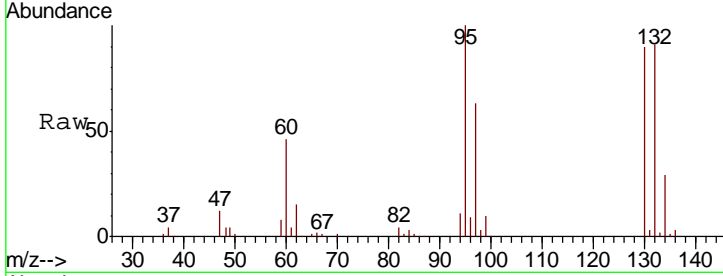




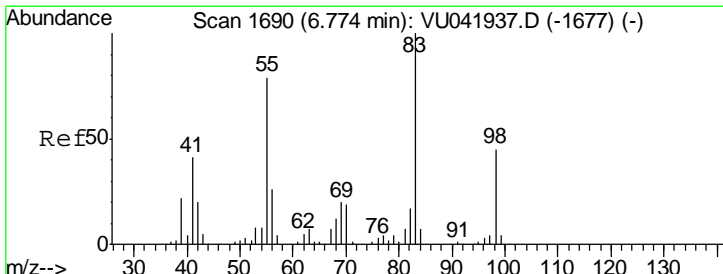
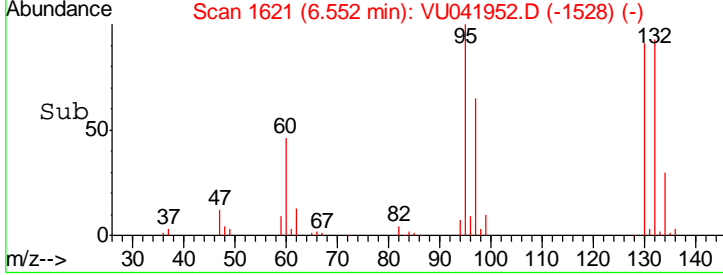
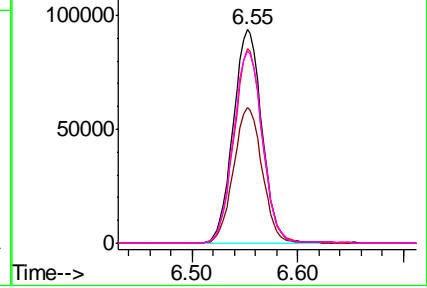
#34
 Trichloroethene
 Concen: 20.394 ug/L
 RT: 6.55 min Scan# 1621
 Delta R.T. -0.00 min
 Lab File: VU041952.D
 Acq: 12 Jan 2021 04:11

Instrument :
 MSVOA_U
 ClientSampled :
 BFXK9

Tgt Ion	Resp	Lower	Upper
95	177985		
97	63.4	45.2	84.0
132	91.3	68.7	127.5
130	89.8	68.0	126.4

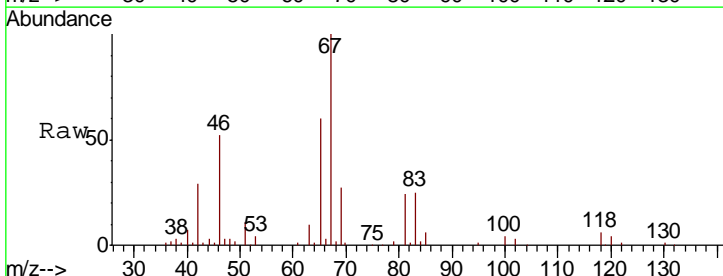


Abundance Ion 95.00 (94.70 to 95.70): VU041937.D (-1606) (-)
 Ion 96.95 (96.65 to 97.65): VU041937.D (-1606) (-)
 Ion 131.95 (131.65 to 132.65): VU041937.D (-1606) (-)
 Ion 129.95 (129.65 to 130.65): VU041937.D (-1606) (-)

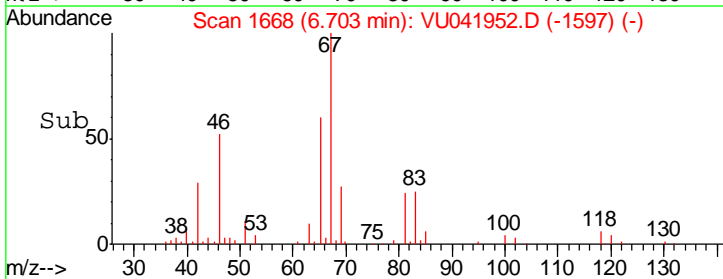
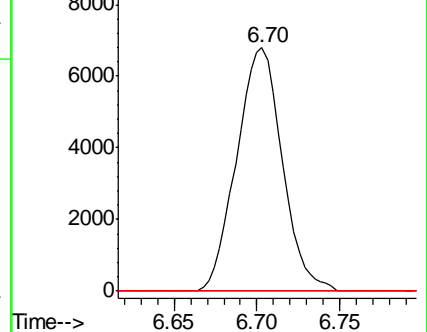


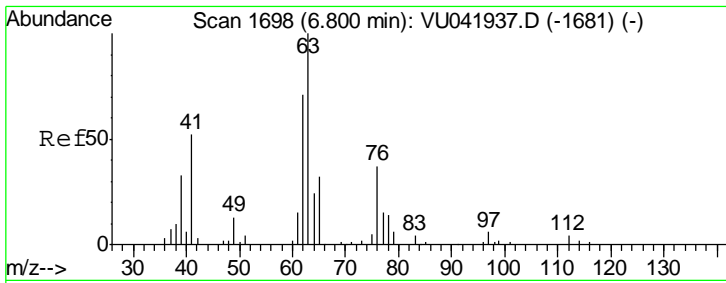
#35
 Methylcyclohexane
 Concen: 1.012 ug/L
 RT: 6.70 min Scan# 1668
 Delta R.T. -0.07 min
 Lab File: VU041952.D
 Acq: 12 Jan 2021 04:11

Tgt Ion	Resp	Lower	Upper
83	12987		
55	0.0	64.3	96.5#
98	0.0	36.6	54.8#



Abundance Ion 83.15 (82.85 to 83.85): VU041952.D (-1597) (-)
 Ion 55.10 (54.80 to 55.80): VU041952.D (-1597) (-)
 Ion 98.15 (97.85 to 98.85): VU041952.D (-1597) (-)

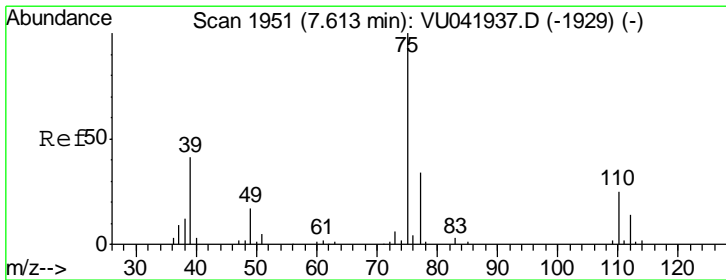
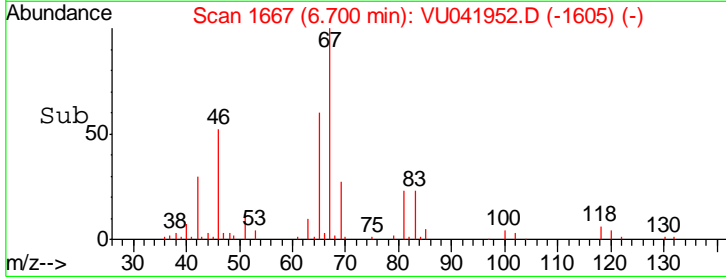
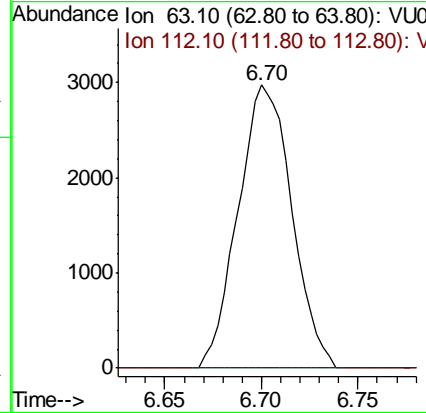
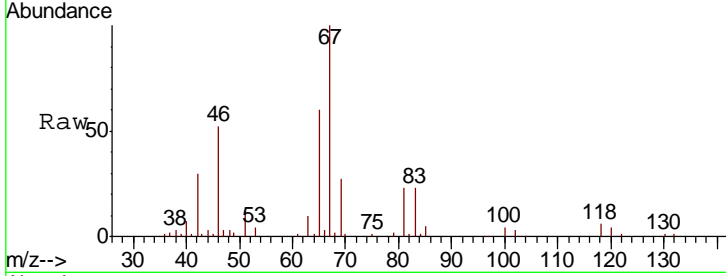




#37
 1,2-Dichloropropane
 Concen: 0.691 ug/L
 RT: 6.70 min Scan# 1667
 Delta R.T. -0.10 min
 Lab File: VU041952.D
 Acq: 12 Jan 2021 04:11

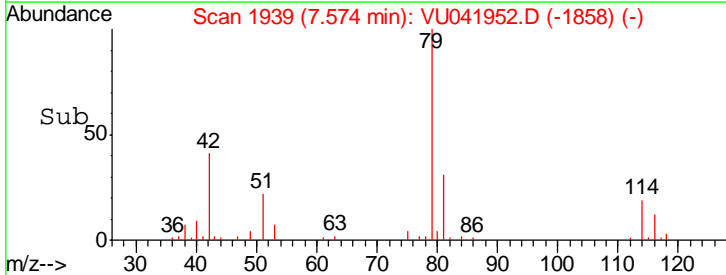
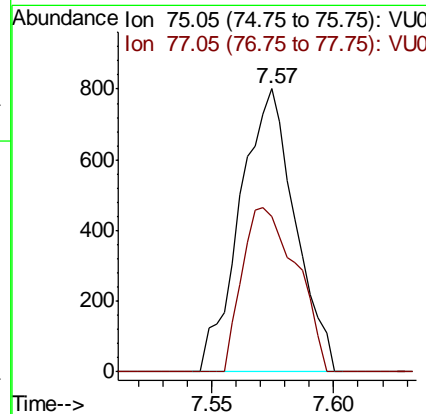
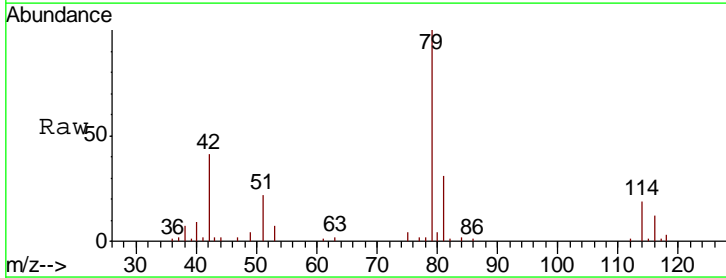
Instrument : MSVOA_U
 ClientSampled : BFXK9

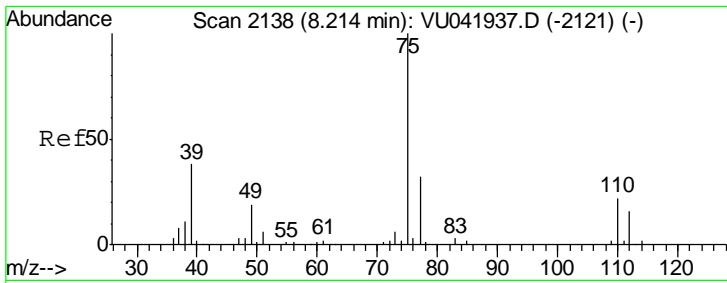
Tgt Ion	Resp	Lower	Upper
63	100		
112	0.0	3.3	4.9#



#39
 cis-1,3-Dichloropropene
 Concen: 0.102 ug/L
 RT: 7.57 min Scan# 1939
 Delta R.T. -0.04 min
 Lab File: VU041952.D
 Acq: 12 Jan 2021 04:11

Tgt Ion	Resp	Lower	Upper
75	100		
77	55.1	21.5	39.9#

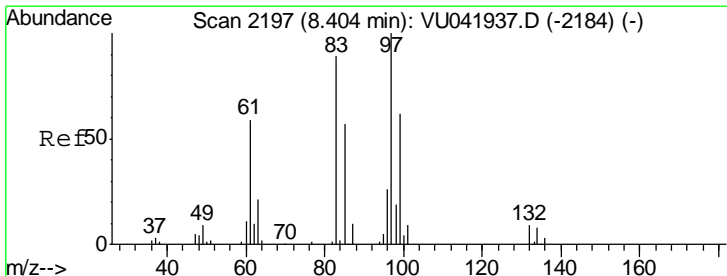
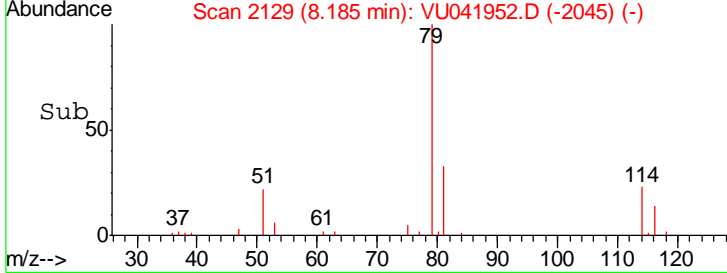
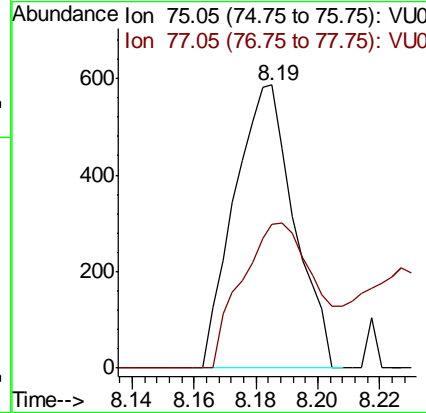
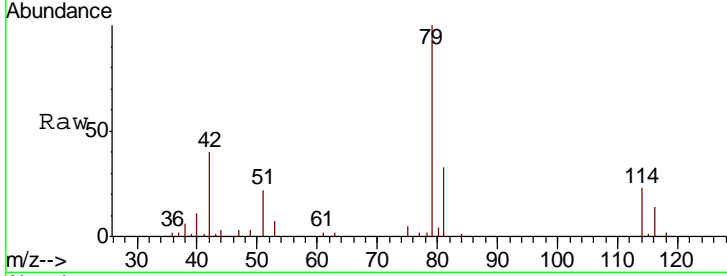




#44
 trans-1,3-Dichloropropene
 Concen: 0.073 ug/L
 RT: 8.19 min Scan# 2129
 Delta R.T. -0.03 min
 Lab File: VU041952.D
 Acq: 12 Jan 2021 04:11

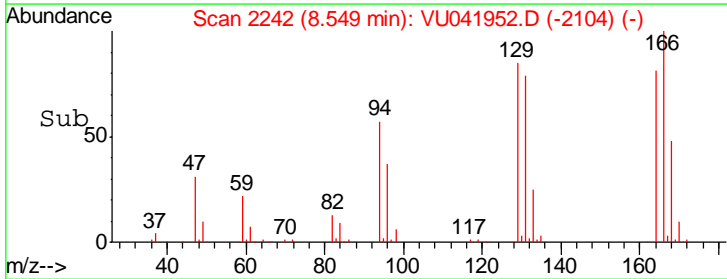
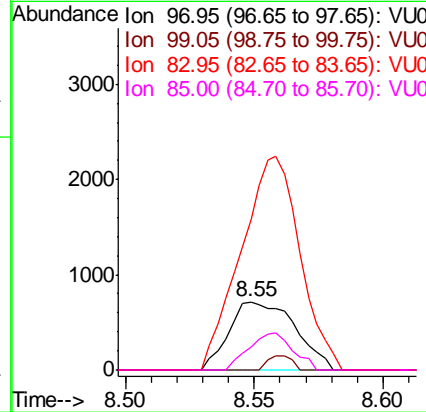
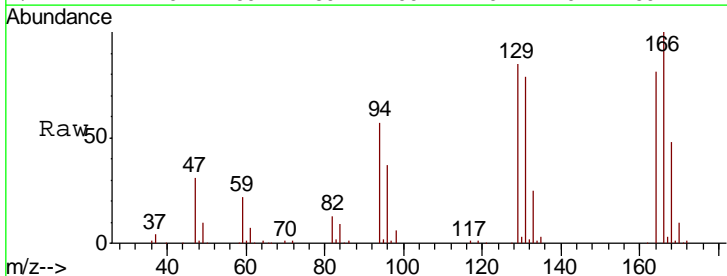
Instrument : MSVOA_U
 ClientSampled : BFXK9

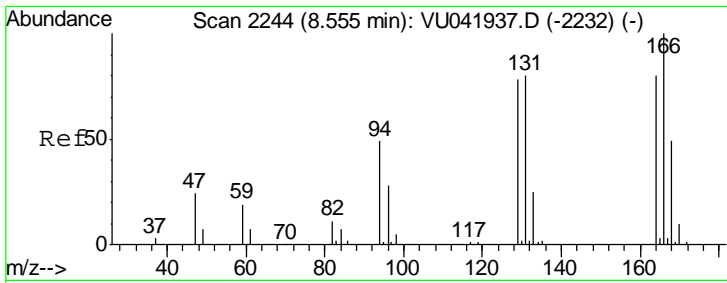
Tgt Ion: 75 Resp: 789
 Ion Ratio Lower Upper
 75 100
 77 50.8 23.7 44.1#



#45
 1,1,2-Trichloroethane
 Concen: 0.201 ug/L
 RT: 8.55 min Scan# 2242
 Delta R.T. 0.14 min
 Lab File: VU041952.D
 Acq: 12 Jan 2021 04:11

Tgt Ion: 97 Resp: 1275
 Ion Ratio Lower Upper
 97 100
 99 0.0 45.1 83.9#
 83 221.8 63.3 117.7#
 85 34.1 39.2 72.8#

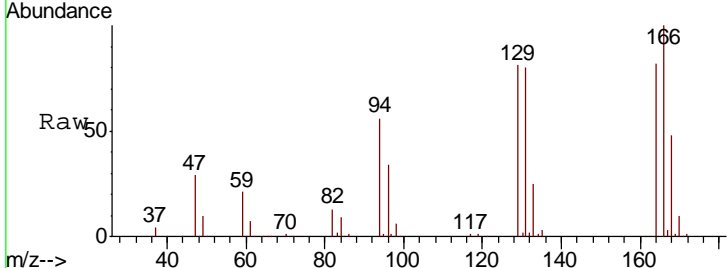




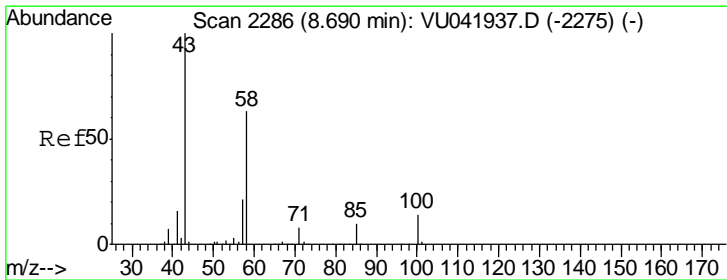
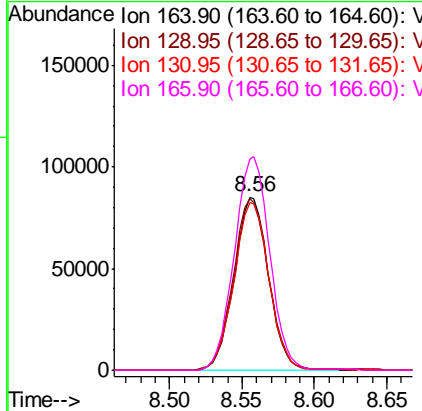
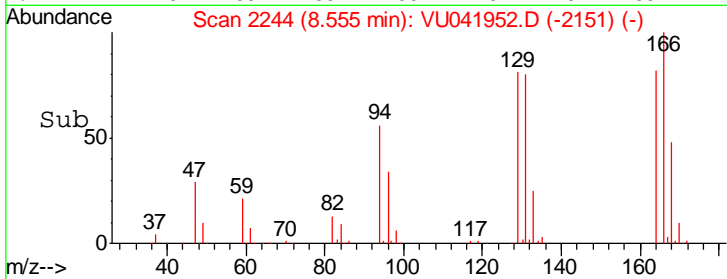
#47

Tetrachloroethene
 Concen: 23.117 ug/L
 RT: 8.56 min Scan# 2244
 Delta R.T. -0.00 min
 Lab File: VU041952.D
 Acq: 12 Jan 2021 04:11

Instrument :
 MSVOA_U
 ClientSampled :
 BFXK9

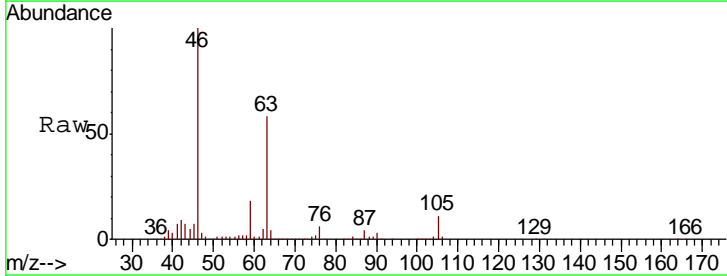


Tgt Ion	Resp	Lower	Upper
164	100		
129	99.4	69.2	128.6
131	97.2	69.7	129.5
166	122.1	89.2	165.8

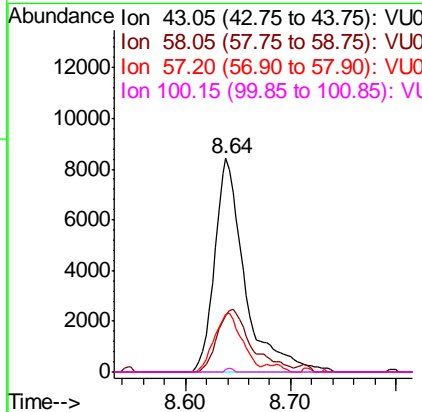
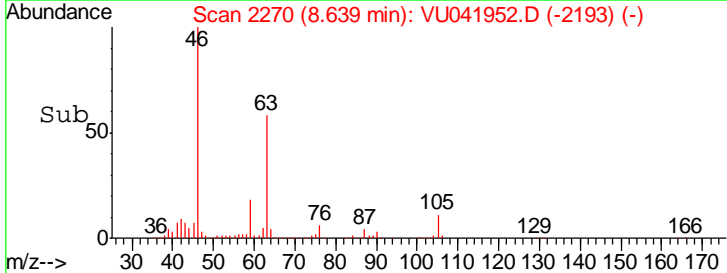


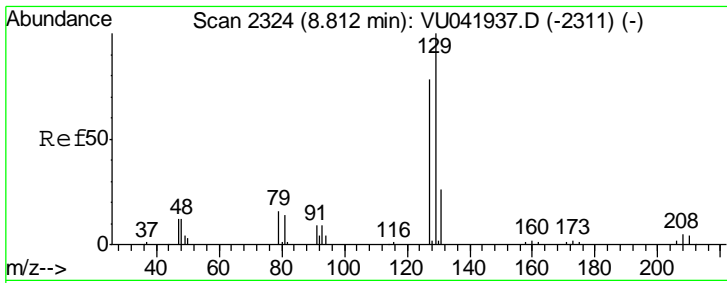
#48

2-Hexanone
 Concen: 4.303 ug/L
 RT: 8.64 min Scan# 2270
 Delta R.T. -0.05 min
 Lab File: VU041952.D
 Acq: 12 Jan 2021 04:11



Tgt Ion	Resp	Lower	Upper
43	100		
58	33.1	47.6	71.4#
57	25.3	17.1	25.7
100	0.4	10.4	15.6#

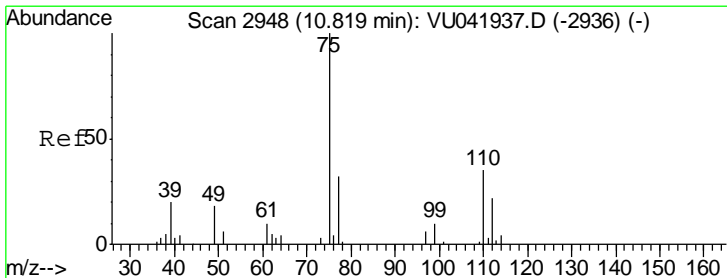
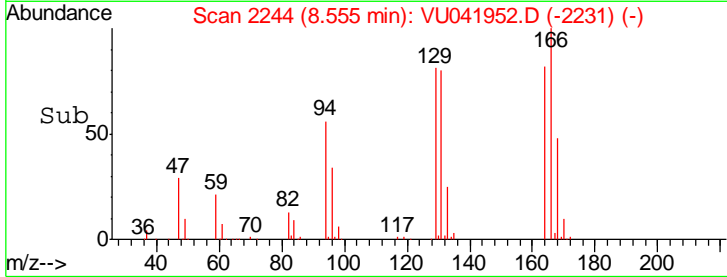
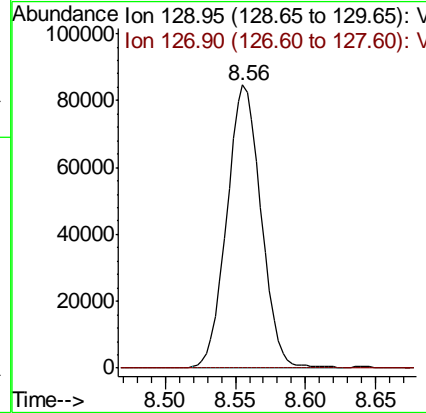
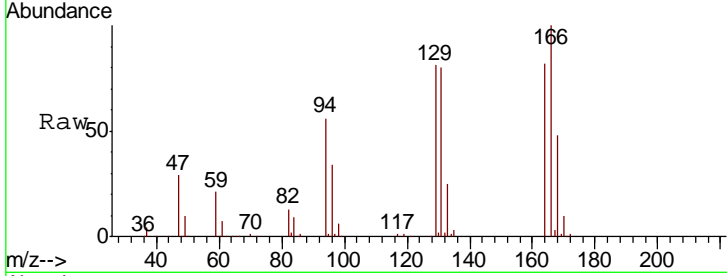




#49
 Dibromochloromethane
 Concen: 18.277 ug/L
 RT: 8.56 min Scan# 2244
 Delta R.T. -0.26 min
 Lab File: VU041952.D
 Acq: 12 Jan 2021 04:11

Instrument :
 MSVOA_U
 ClientSampled :
 BFXK9

Tgt Ion: 129 Resp: 141393
 Ion Ratio Lower Upper
 129 100
 127 0.2 54.9 101.9#



#59
 1,2,3-Trichloropropane
 Concen: 0.888 ug/L
 RT: 11.81 min Scan# 3255
 Delta R.T. 0.99 min
 Lab File: VU041952.D
 Acq: 12 Jan 2021 04:11

Tgt Ion: 75 Resp: 5377
 Ion Ratio Lower Upper
 75 100
 77 32.6 27.0 40.4

