

Data Path : Z:\VOASRV\HPCHEM1\MSVOA U\DATA\VU011121\
 Data File : VU041941.D
 Acq On : 11 Jan 2021 23:48
 Operator : SY/MD
 Sample : M1027-09
 Misc : 25.0mL/MSVOA U/WATER
 ALS Vial : 33 Sample Multiplier: 1

Instrument :
 MSVOA_U
 ClientSampleId :
 BFXQ6

Quant Time: Jan 12 07:10:03 2021
 Quant Method : Z:\VOASRV\HPCHEM1\MSVOA_U\METHOD\SOMUTR011121WMA.M
 Quant Title : TRACE VOA SOM01.0
 QLast Update : Tue Jan 12 05:50:11 2021
 Response via : Initial Calibration

Internal Standards	R.T.	QIon	Response	Conc	Units	Dev(Min)
1) 1,4-Difluorobenzene	6.26	114	113080	5.00	ug/L	0.00
28) Chlorobenzene-d5	9.42	117	104141	5.00	ug/L	0.00
60) 1,4-Dichlorobenzene-d4	11.81	152	44481	5.00	ug/L	0.00

System Monitoring Compounds

4) Vinyl Chloride-d3	1.60	65	46012	4.82	ug/L	0.00
Spiked Amount	5.000	Range	40 - 130	Recovery	=	96.40%
7) Chloroethane-d5	1.92	69	45403	5.14	ug/L	0.00
Spiked Amount	5.000	Range	65 - 130	Recovery	=	102.80%
11) 1,1-Dichloroethene-d2	2.58	63	69170	3.83	ug/L	0.00
Spiked Amount	5.000	Range	60 - 125	Recovery	=	76.60%
20) 2-Butanone-d5	4.65	46	168081	63.46	ug/L	0.00
Spiked Amount	50.000	Range	40 - 130	Recovery	=	126.92%
24) Chloroform-d	5.08	84	88456	5.09	ug/L	0.00
Spiked Amount	5.000	Range	70 - 125	Recovery	=	101.80%
26) 1,2-Dichloroethane-d4	5.72	65	54340	5.93	ug/L	0.00
Spiked Amount	5.000	Range	70 - 130	Recovery	=	118.60%
32) Benzene-d6	5.74	84	178949	5.81	ug/L	0.00
Spiked Amount	5.000	Range	70 - 125	Recovery	=	116.20%
36) 1,2-Dichloropropane-d6	6.70	67	56960	5.89	ug/L	0.00
Spiked Amount	5.000	Range	60 - 140	Recovery	=	117.80%
41) Toluene-d8	7.90	98	135867	4.87	ug/L	0.00
Spiked Amount	5.000	Range	70 - 130	Recovery	=	97.40%
43) trans-1,3-Dichloropropene-	8.18	79	20973	5.20	ug/L	0.00
Spiked Amount	5.000	Range	55 - 130	Recovery	=	104.00%
46) 2-Hexanone-d5	8.64	63	128328	62.87	ug/L	0.00
Spiked Amount	50.000	Range	45 - 130	Recovery	=	125.74%
57) 1,1,2,2-Tetrachloroethane-	10.75	84	48041	5.61	ug/L	0.00
Spiked Amount	5.000	Range	65 - 120	Recovery	=	112.20%
64) 1,2-Dichlorobenzene-d4	12.19	152	46790	5.56	ug/L	0.00
Spiked Amount	5.000	Range	80 - 120	Recovery	=	111.20%

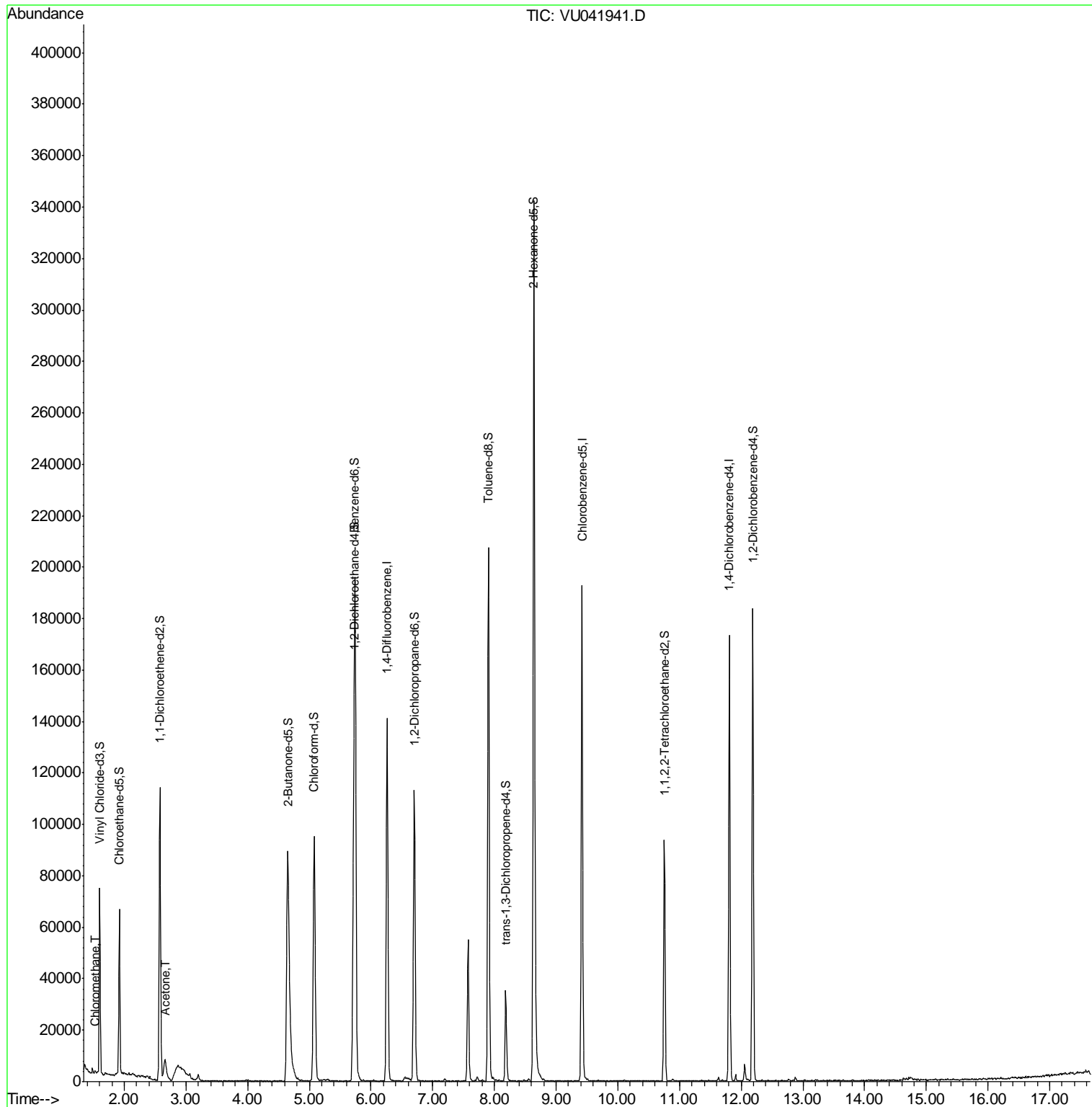
Target Compounds					Ovalue
3) Chloromethane	1.52	50	734	0.062 ug/L	90
13) Acetone	2.66	43	16188	9.411 ug/L #	44

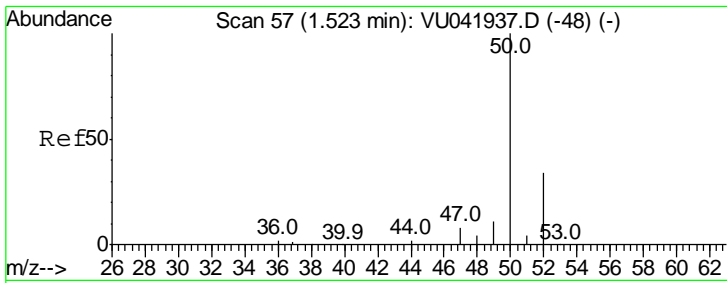
(#) = qualifier out of range (m) = manual integration (+) = signals summed

Data Path : Z:\VOASRV\HPCHEM1\MSVOA U\DATA\VU011121\
 Data File : VU041941.D
 Acq On : 11 Jan 2021 23:48
 Operator : SY/MD
 Sample : M1027-09
 Misc : 25.0mL/MSVOA U/WATER
 ALS Vial : 33 Sample Multiplier: 1

Instrument :
 MSVOA_U
 ClientSampled :
 BFXQ6

Quant Time: Jan 12 07:10:03 2021
 Quant Method : Z:\VOASRV\HPCHEM1\MSVOA_U\METHOD\SOMUTR011121WMA.M
 Quant Title : TRACE VOA SOM01.0
 QLast Update : Tue Jan 12 05:50:11 2021
 Response via : Initial Calibration

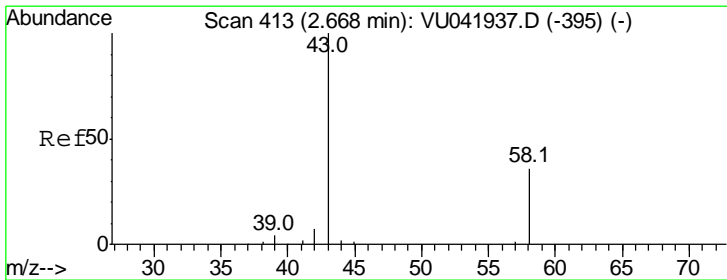
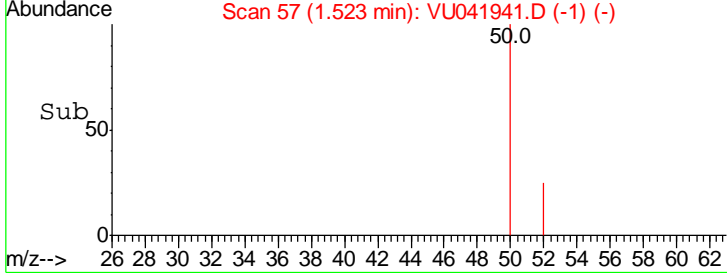
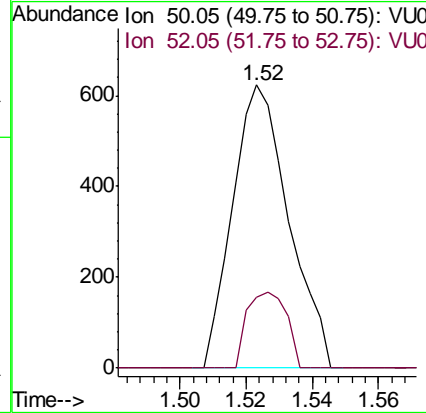
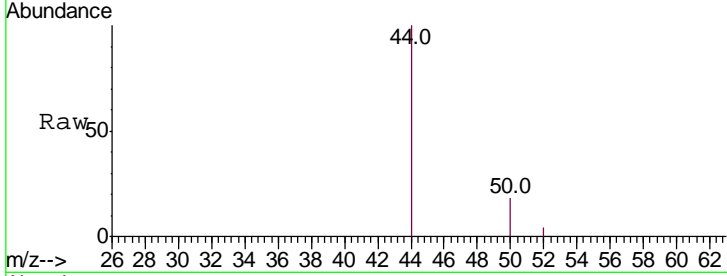




#3
 Chloromethane
 Concen: 0.062 ug/L
 RT: 1.52 min Scan# 57
 Delta R.T. -0.00 min
 Lab File: VU041941.D
 Acq: 11 Jan 2021 23:48

Instrument :
 MSVOA_U
ClientSampled :
 BFXQ6

Tgt Ion	Resp	Lower	Upper
50	100		
52	25.0	21.4	39.8



#13
 Acetone
 Concen: 9.411 ug/L
 RT: 2.66 min Scan# 410
 Delta R.T. -0.01 min
 Lab File: VU041941.D
 Acq: 11 Jan 2021 23:48

Tgt Ion	Resp	Lower	Upper
43	100		
58	33.3	0.0	23.6#

