

Data Path : Z:\VOASRV\HPCHEM1\MSVOA U\DATA\VU011121\
 Data File : VU041949.D
 Acq On : 12 Jan 2021 02:59
 Operator : SY/MD
 Sample : M1027-12
 Misc : 25.0mL/MSVOA U/WATER
 ALS Vial : 41 Sample Multiplier: 1

Instrument :
 MSVOA_U
 ClientSampled :
 BFXK6

Quant Time: Jan 12 07:27:39 2021
 Quant Method : Z:\VOASRV\HPCHEM1\MSVOA_U\METHOD\SOMUTR011121WMA.M
 Quant Title : TRACE VOA SOM01.0
 QLast Update : Tue Jan 12 05:50:11 2021
 Response via : Initial Calibration

Internal Standards	R.T.	QIon	Response	Conc	Units	Dev(Min)
1) 1,4-Difluorobenzene	6.26	114	105127	5.00	ug/L	0.00
28) Chlorobenzene-d5	9.42	117	102437	5.00	ug/L	0.00
60) 1,4-Dichlorobenzene-d4	11.81	152	43911	5.00	ug/L	0.00

System Monitoring Compounds

4) Vinyl Chloride-d3	1.60	65	47135	5.32	ug/L	0.00
Spiked Amount	5.000	Range	40 - 130	Recovery	=	106.40%
7) Chloroethane-d5	1.92	69	45986	5.60	ug/L	0.00
Spiked Amount	5.000	Range	65 - 130	Recovery	=	112.00%
11) 1,1-Dichloroethene-d2	2.58	63	73885	4.40	ug/L	0.00
Spiked Amount	5.000	Range	60 - 125	Recovery	=	88.00%
20) 2-Butanone-d5	4.65	46	141153	57.32	ug/L	0.00
Spiked Amount	50.000	Range	40 - 130	Recovery	=	114.64%
24) Chloroform-d	5.08	84	85950	5.32	ug/L	0.00
Spiked Amount	5.000	Range	70 - 125	Recovery	=	106.40%
26) 1,2-Dichloroethane-d4	5.72	65	48130	5.65	ug/L	0.00
Spiked Amount	5.000	Range	70 - 130	Recovery	=	113.00%
32) Benzene-d6	5.74	84	160755	5.31	ug/L	0.00
Spiked Amount	5.000	Range	70 - 125	Recovery	=	106.20%
36) 1,2-Dichloropropane-d6	6.70	67	52117	5.48	ug/L	0.00
Spiked Amount	5.000	Range	60 - 140	Recovery	=	109.60%
41) Toluene-d8	7.90	98	137506	5.01	ug/L	0.00
Spiked Amount	5.000	Range	70 - 130	Recovery	=	100.20%
43) trans-1,3-Dichloropropene-	8.19	79	20409	5.14	ug/L	0.00
Spiked Amount	5.000	Range	55 - 130	Recovery	=	102.80%
46) 2-Hexanone-d5	8.64	63	124736	62.13	ug/L	0.00
Spiked Amount	50.000	Range	45 - 130	Recovery	=	124.26%
57) 1,1,2,2-Tetrachloroethane-	10.75	84	48322	5.74	ug/L	0.00
Spiked Amount	5.000	Range	65 - 120	Recovery	=	114.80%
64) 1,2-Dichlorobenzene-d4	12.19	152	50353	6.06	ug/L	0.00
Spiked Amount	5.000	Range	80 - 120	Recovery	=	121.20%#

Target Compounds

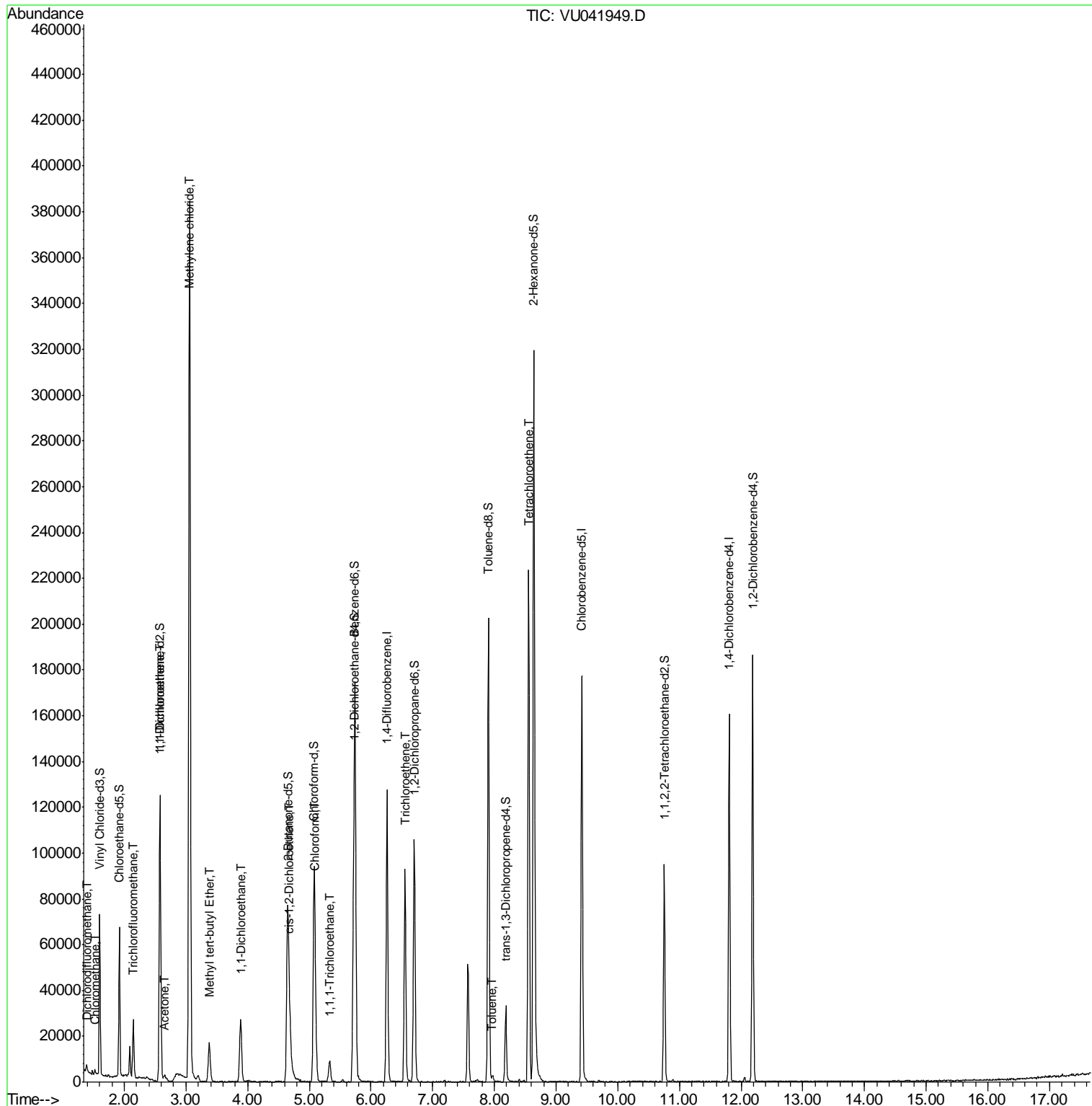
Target Compounds	R.T.	QIon	Response	Conc	Units	Ovalue
2) Dichlorodifluoromethane	1.39	85	893	0.088	ug/L	95
3) Chloromethane	1.52	50	1619	0.146	ug/L	98
9) Trichlorofluoromethane	2.15	101	16013	1.033	ug/L	99
12) 1,1-Dichloroethene	2.59	96	7477	0.911	ug/L #	1
13) Acetone	2.66	43	4535	2.836	ug/L #	62
16) Methylene chloride	3.06	84	191281	18.543	ug/L	95
17) Methyl tert-butyl Ether	3.38	73	19192	0.975	ug/L	99
19) 1,1-Dichloroethane	3.89	63	32860	2.197	ug/L	98
22) cis-1,2-Dichloroethene	4.68	96	2319	0.273	ug/L	99
25) Chloroform	5.10	83	16289	1.045	ug/L	93
29) 1,1,1-Trichloroethane	5.33	97	6861	0.513	ug/L	96
34) Trichloroethene	6.55	95	32377	3.736	ug/L	99
42) Toluene	7.97	91	1810	0.053	ug/L	78
47) Tetrachloroethene	8.56	164	50352	8.350	ug/L	97

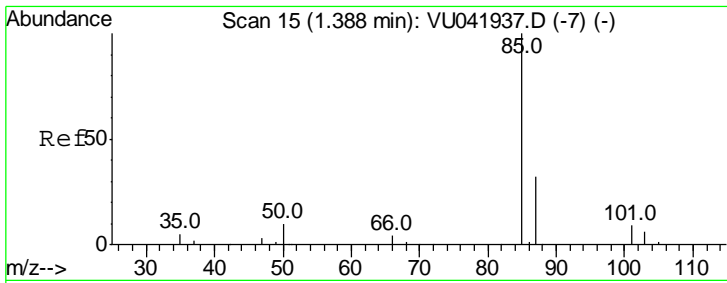
(#) = qualifier out of range (m) = manual integration (+) = signals summed

Data Path : Z:\VOASRV\HPCHEM1\MSVOA U\DATA\VU011121\
 Data File : VU041949.D
 Acq On : 12 Jan 2021 02:59
 Operator : SY/MD
 Sample : M1027-12
 Misc : 25.0mL/MSVOA U/WATER
 ALS Vial : 41 Sample Multiplier: 1

Instrument :
 MSVOA_U
 ClientSampled :
 BFXK6

Quant Time: Jan 12 07:27:39 2021
 Quant Method : Z:\VOASRV\HPCHEM1\MSVOA_U\METHOD\SOMUTR011121WMA.M
 Quant Title : TRACE VOA SOM01.0
 QLast Update : Tue Jan 12 05:50:11 2021
 Response via : Initial Calibration

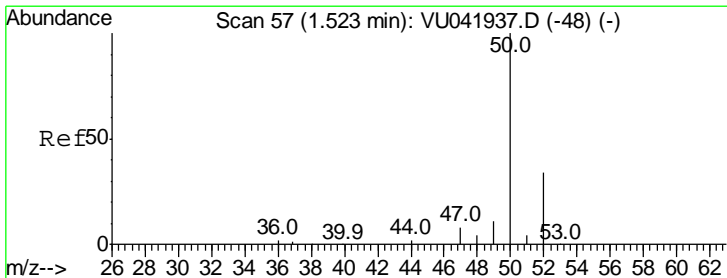
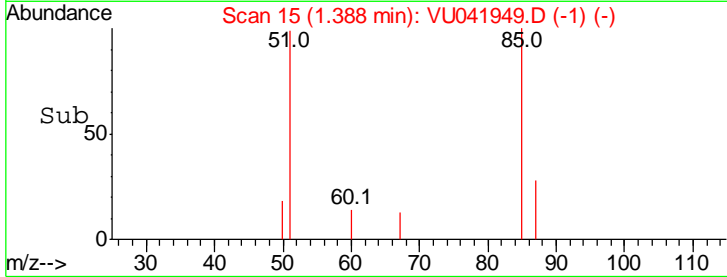
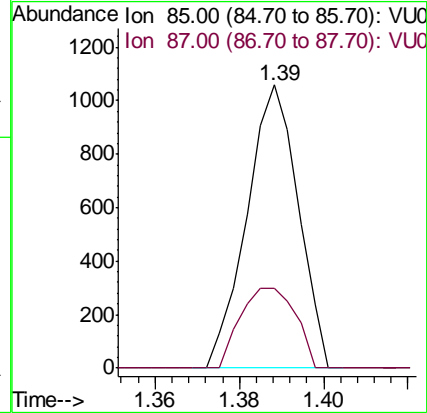
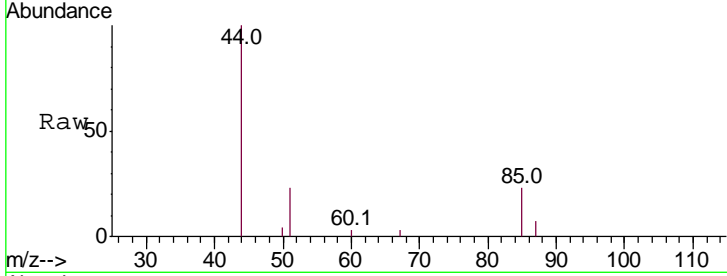




#2
 Dichlorodifluoromethane
 Concen: 0.088 ug/L
 RT: 1.39 min Scan# 15
 Delta R.T. -0.00 min
 Lab File: VU041949.D
 Acq: 12 Jan 2021 02:59

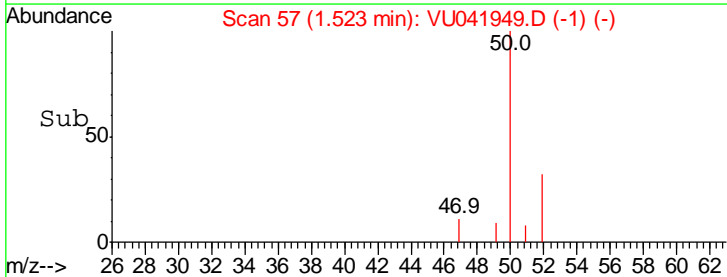
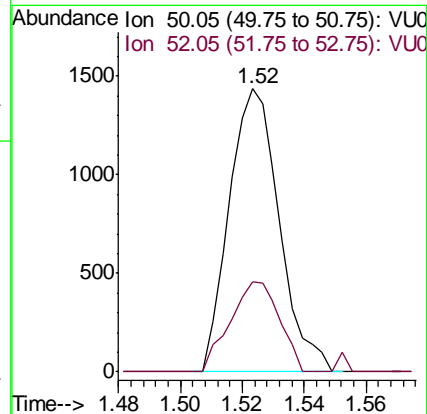
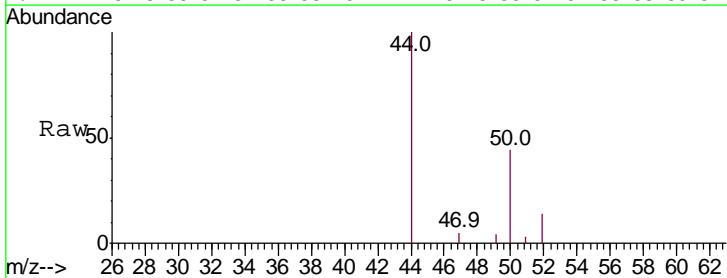
Instrument :
 MSVOA_U
 ClientSampled :
 BFXK6

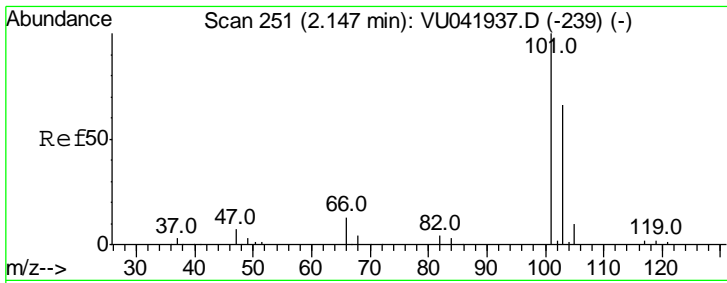
Tgt Ion: 85 Resp: 893
 Ion Ratio Lower Upper
 85 100
 87 30.1 26.3 39.5



#3
 Chloromethane
 Concen: 0.146 ug/L
 RT: 1.52 min Scan# 57
 Delta R.T. -0.00 min
 Lab File: VU041949.D
 Acq: 12 Jan 2021 02:59

Tgt Ion: 50 Resp: 1619
 Ion Ratio Lower Upper
 50 100
 52 31.6 21.4 39.8

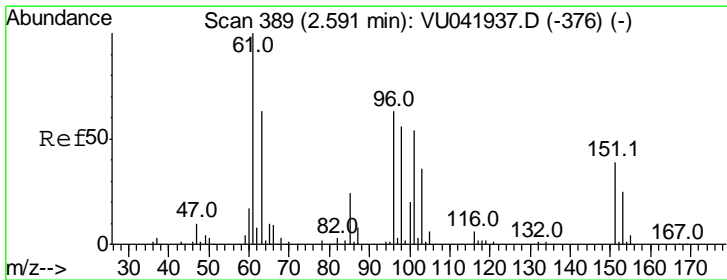
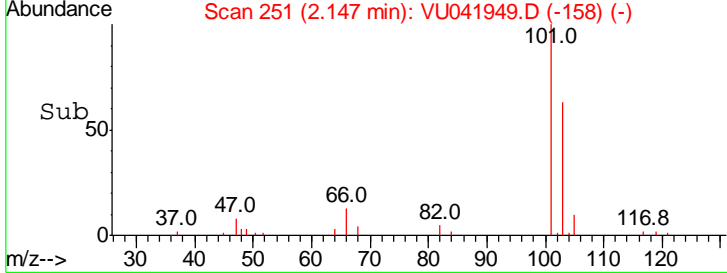
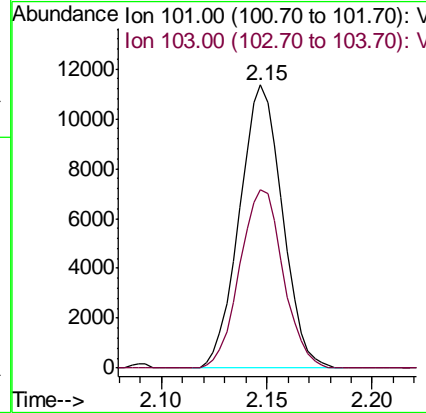
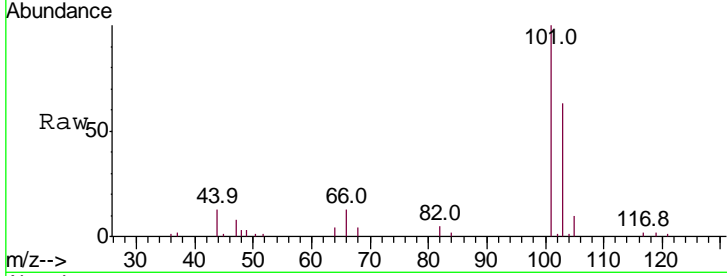




#9
 Trichlorofluoromethane
 Concen: 1.033 ug/L
 RT: 2.15 min Scan# 251
 Delta R.T. -0.00 min
 Lab File: VU041949.D
 Acq: 12 Jan 2021 02:59

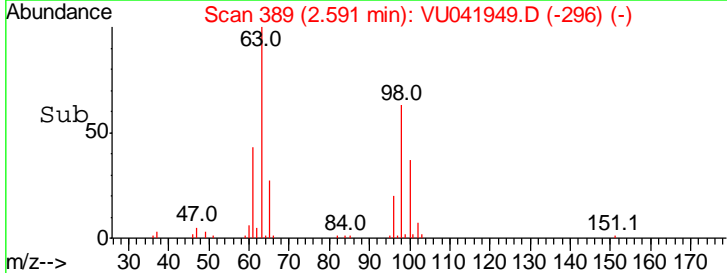
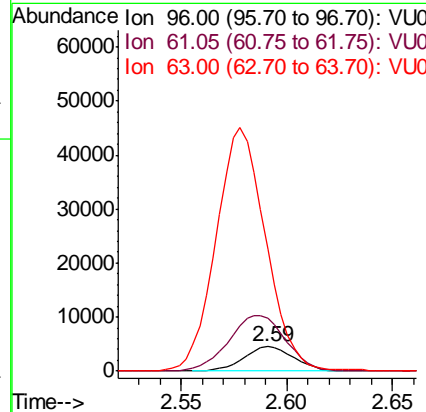
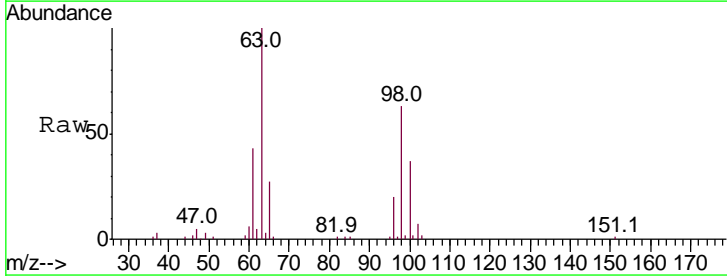
Instrument : MSVOA_U
 ClientSampled : BFXK6

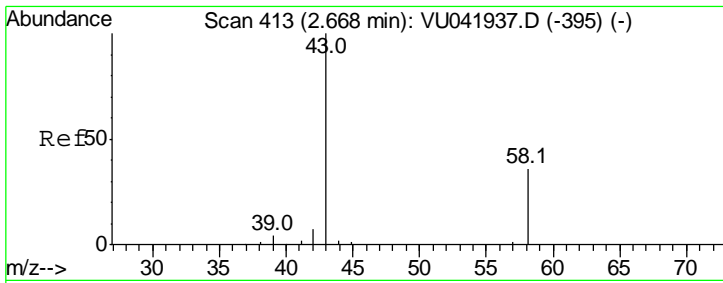
Tgt Ion	Resp	Lower	Upper
101	16013		
103	63.7	51.3	76.9



#12
 1,1-Dichloroethene
 Concen: 0.911 ug/L
 RT: 2.59 min Scan# 389
 Delta R.T. -0.00 min
 Lab File: VU041949.D
 Acq: 12 Jan 2021 02:59

Tgt Ion	Resp	Lower	Upper
96	7477		
61	218.7	123.5	229.4
63	504.7	93.5	173.7#

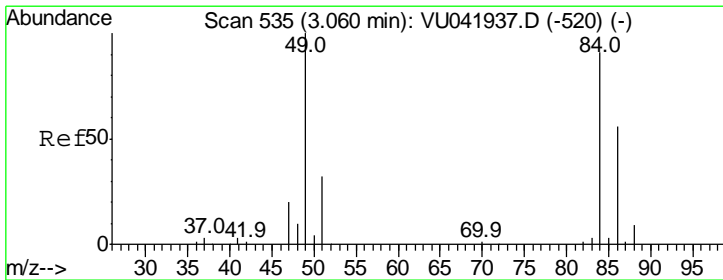
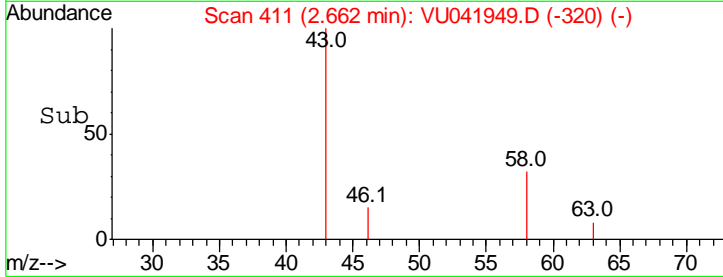
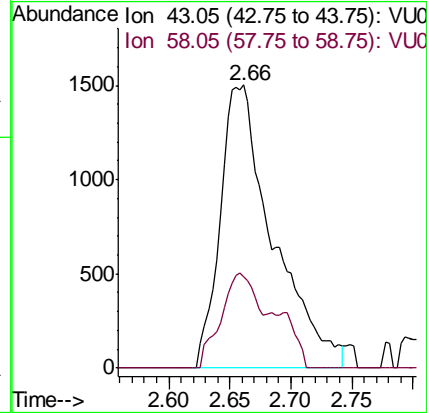
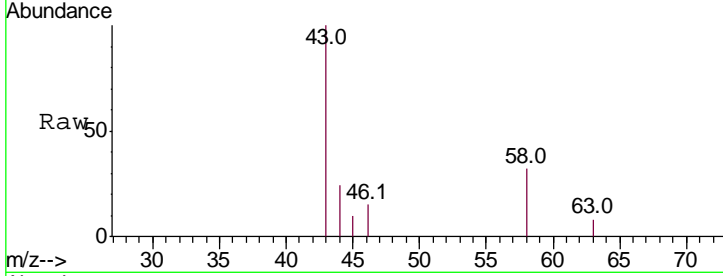




#13
 Acetone
 Concen: 2.836 ug/L
 RT: 2.66 min Scan# 411
 Delta R.T. -0.01 min
 Lab File: VU041949.D
 Acq: 12 Jan 2021 02:59

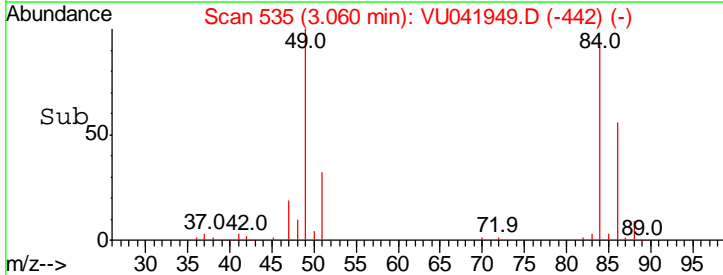
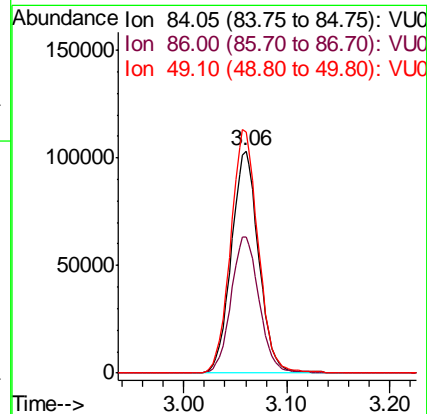
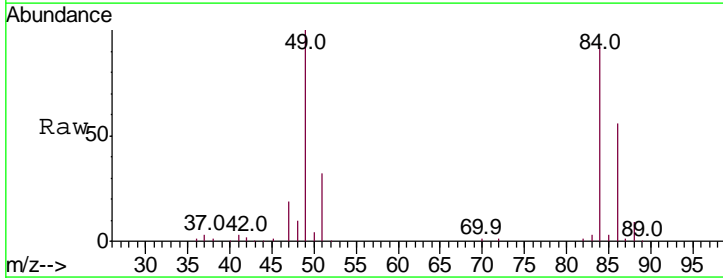
Instrument :
 MSVOA_U
 ClientSampled :
 BFXK6

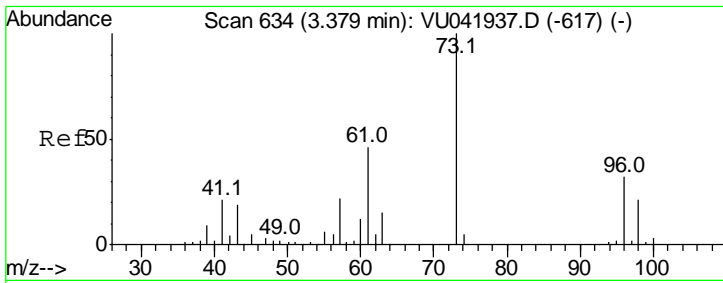
Tgt Ion	Ratio	Lower	Upper
43	100		
58	26.7	0.0	23.6#



#16
 Methylene chloride
 Concen: 18.543 ug/L
 RT: 3.06 min Scan# 535
 Delta R.T. -0.00 min
 Lab File: VU041949.D
 Acq: 12 Jan 2021 02:59

Tgt Ion	Ratio	Lower	Upper
84	100		
86	61.3	43.5	80.7
49	108.7	81.8	151.8

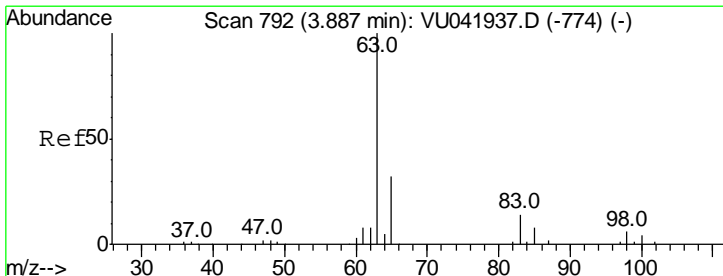
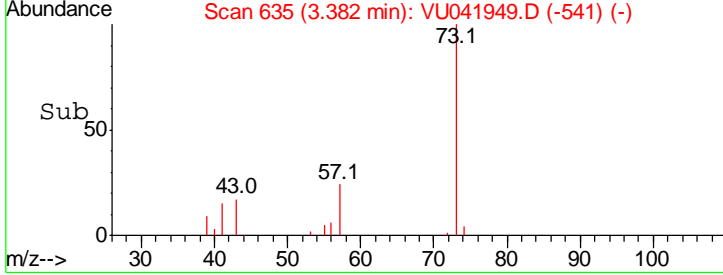
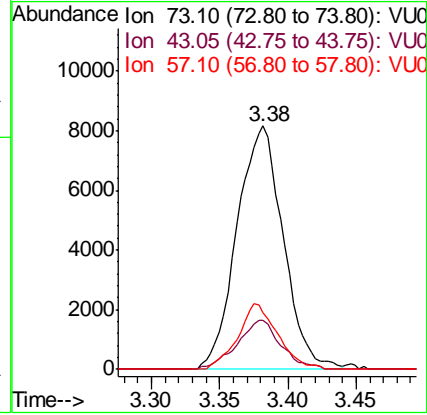
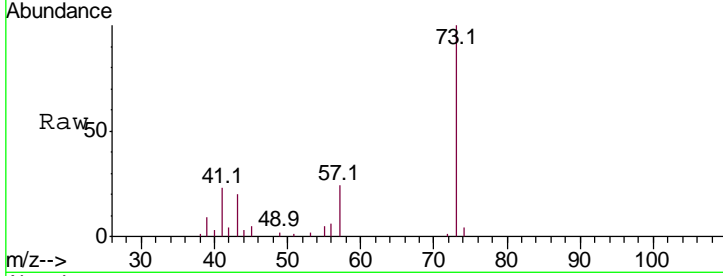




#17
 Methyl tert-butyl Ether
 Concen: 0.975 ug/L
 RT: 3.38 min Scan# 635
 Delta R.T. 0.00 min
 Lab File: VU041949.D
 Acq: 12 Jan 2021 02:59

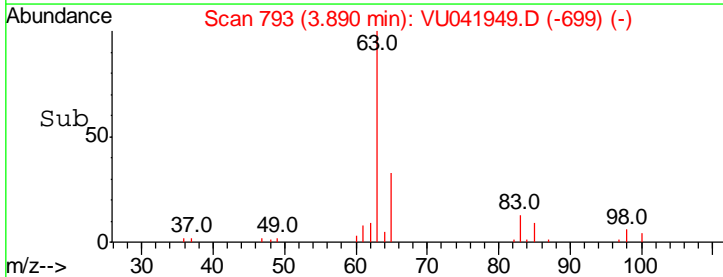
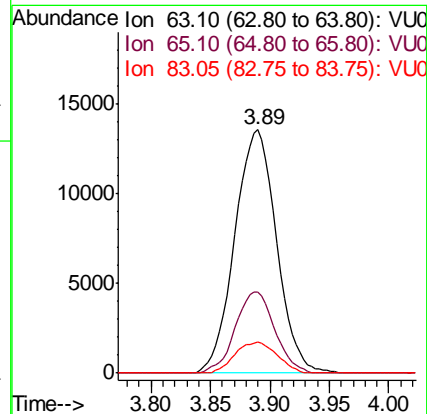
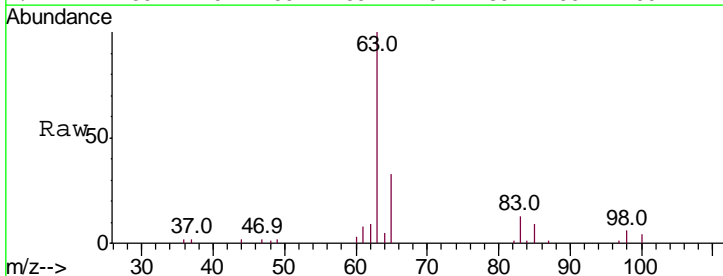
Instrument :
 MSVOA_U
ClientSampled :
 BFXK6

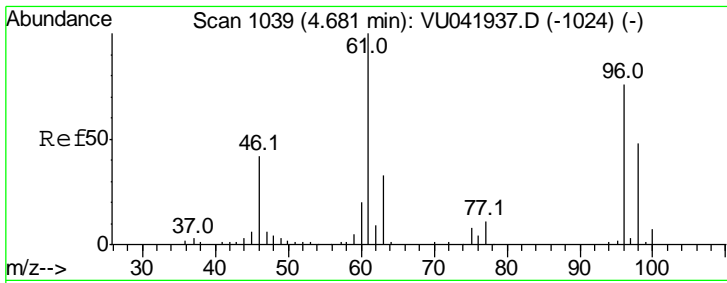
Tgt Ion	Resp	Lower	Upper
73	19192		
43	19.1	15.8	23.8
57	23.2	18.3	27.5



#19
 1,1-Dichloroethane
 Concen: 2.197 ug/L
 RT: 3.89 min Scan# 793
 Delta R.T. 0.00 min
 Lab File: VU041949.D
 Acq: 12 Jan 2021 02:59

Tgt Ion	Resp	Lower	Upper
63	32860		
65	33.1	22.3	41.5
83	12.6	9.0	16.8

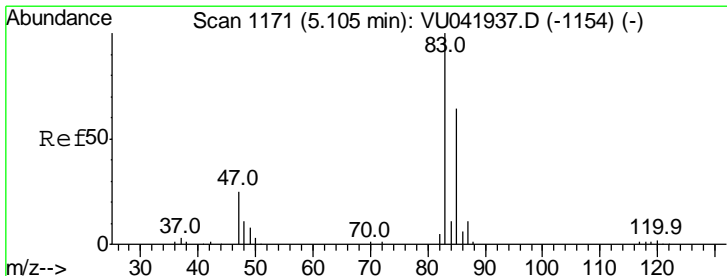
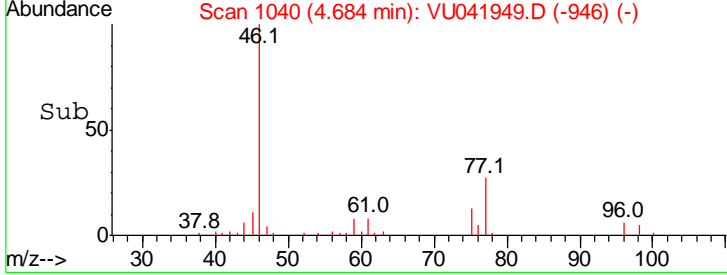
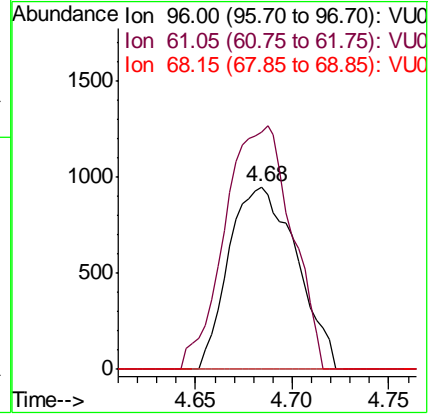
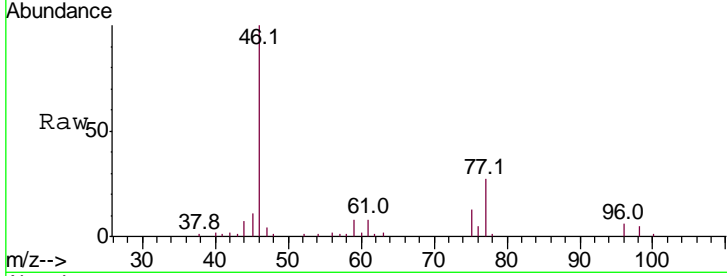




#22
 cis-1,2-Dichloroethene
 Concen: 0.273 ug/L
 RT: 4.68 min Scan# 1040
 Delta R.T. 0.00 min
 Lab File: VU041949.D
 Acq: 12 Jan 2021 02:59

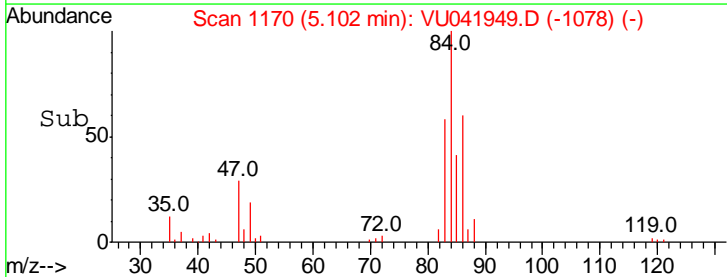
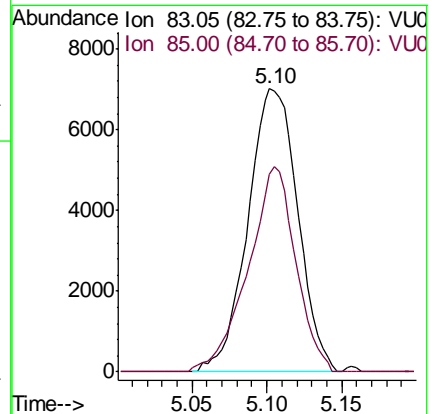
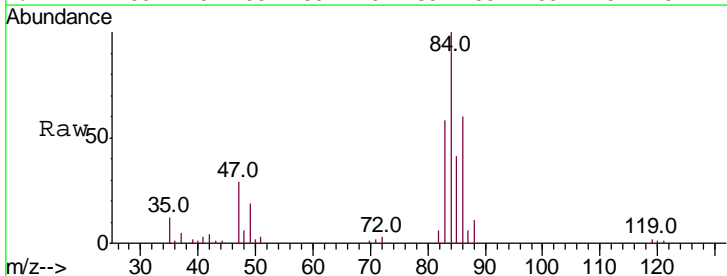
Instrument :
 MSVOA_U
 ClientSampled :
 BFXK6

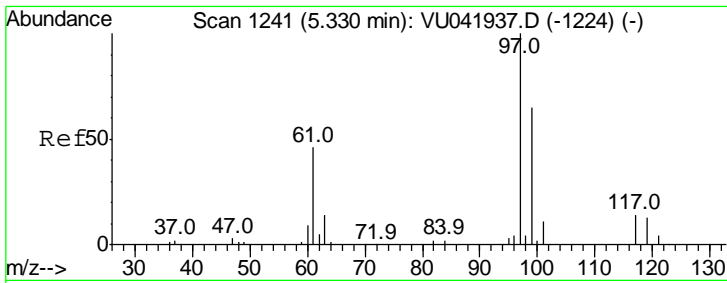
Tgt Ion	Resp	Lower	Upper
96	100		
61	129.8	90.3	167.7
68	0.0	0.0	0.0



#25
 Chloroform
 Concen: 1.045 ug/L
 RT: 5.10 min Scan# 1170
 Delta R.T. -0.00 min
 Lab File: VU041949.D
 Acq: 12 Jan 2021 02:59

Tgt Ion	Resp	Lower	Upper
83	100		
85	69.7	45.1	83.9

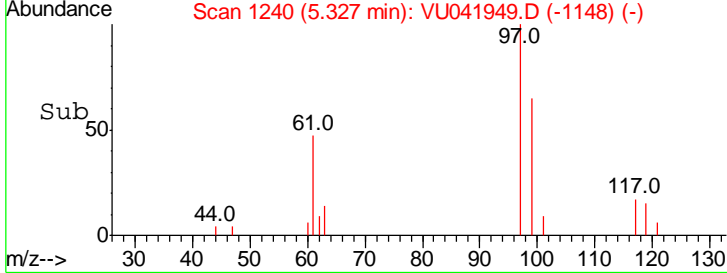
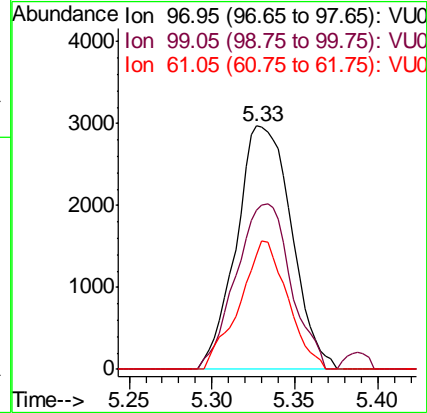
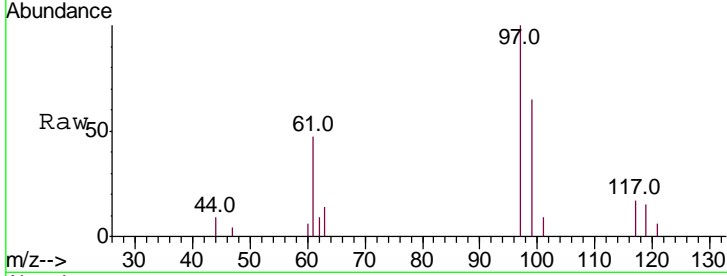




#29
 1,1,1-Trichloroethane
 Concen: 0.513 ug/L
 RT: 5.33 min Scan# 1240
 Delta R.T. -0.00 min
 Lab File: VU041949.D
 Acq: 12 Jan 2021 02:59

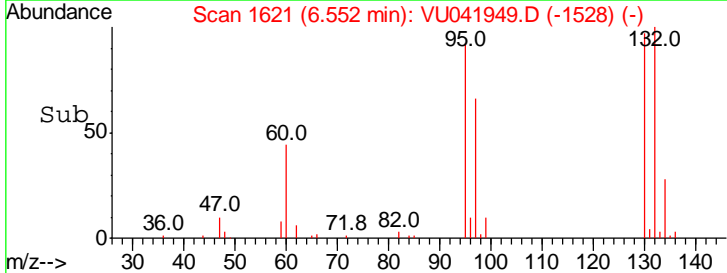
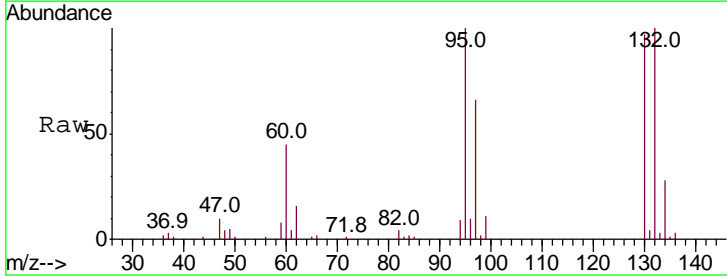
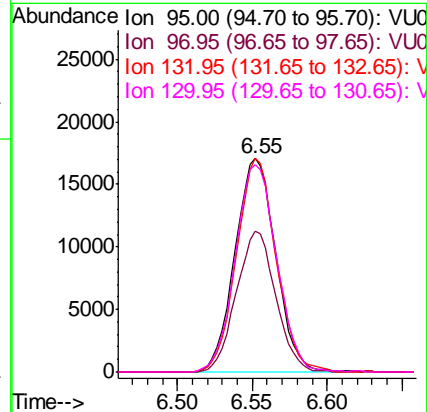
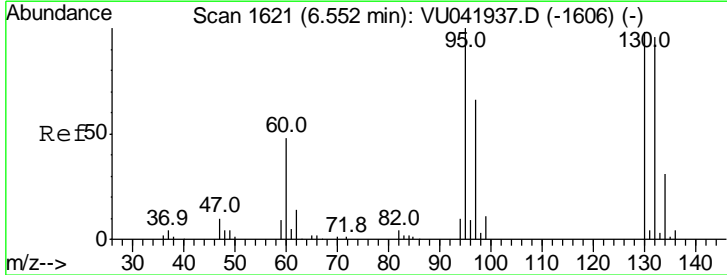
Instrument : MSVOA_U
 ClientSampled : BFXK6

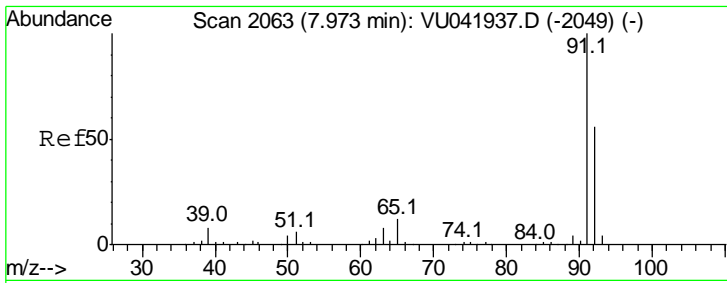
Tgt Ion	Resp	Lower	Upper
97	100		
99	67.7	51.4	77.2
61	46.0	35.3	52.9



#34
 Trichloroethene
 Concen: 3.736 ug/L
 RT: 6.55 min Scan# 1621
 Delta R.T. -0.00 min
 Lab File: VU041949.D
 Acq: 12 Jan 2021 02:59

Tgt Ion	Resp	Lower	Upper
95	100		
97	66.0	45.2	84.0
132	99.8	68.7	127.5
130	97.0	68.0	126.4



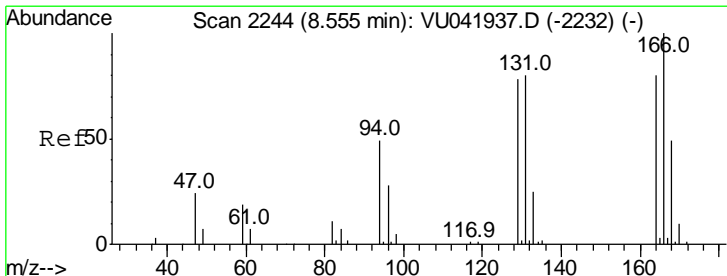
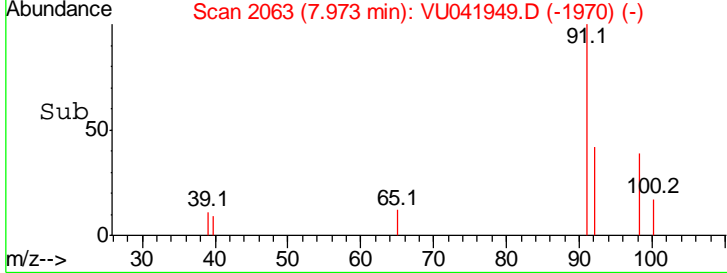
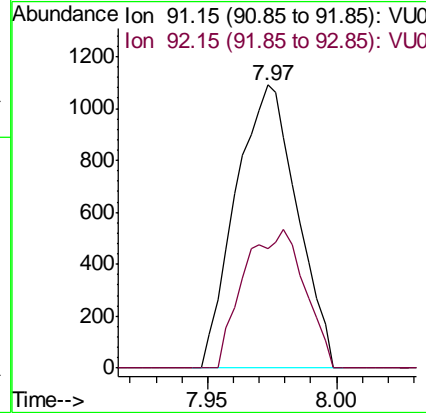
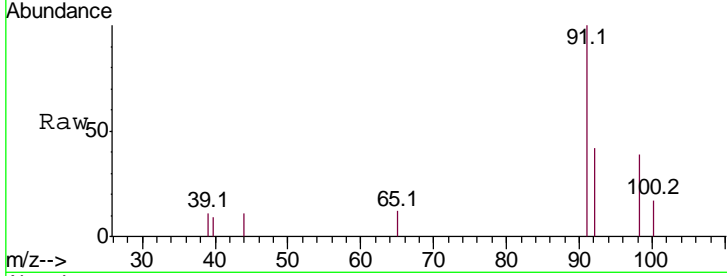


#42
 Toluene
 Concen: 0.053 ug/L
 RT: 7.97 min Scan# 2063
 Delta R.T. -0.00 min
 Lab File: VU041949.D
 Acq: 12 Jan 2021 02:59

Instrument :
 MSVOA_U
 ClientSampled :
 BFXK6

Tgt Ion: 91 Resp: 1810

Ion	Ratio	Lower	Upper
91	100		
92	42.3	41.2	76.6



#47
 Tetrachloroethene
 Concen: 8.350 ug/L
 RT: 8.56 min Scan# 2244
 Delta R.T. -0.00 min
 Lab File: VU041949.D
 Acq: 12 Jan 2021 02:59

Tgt Ion: 164 Resp: 50352

Ion	Ratio	Lower	Upper
164	100		
129	104.7	69.2	128.6
131	101.5	69.7	129.5
166	130.7	89.2	165.8

