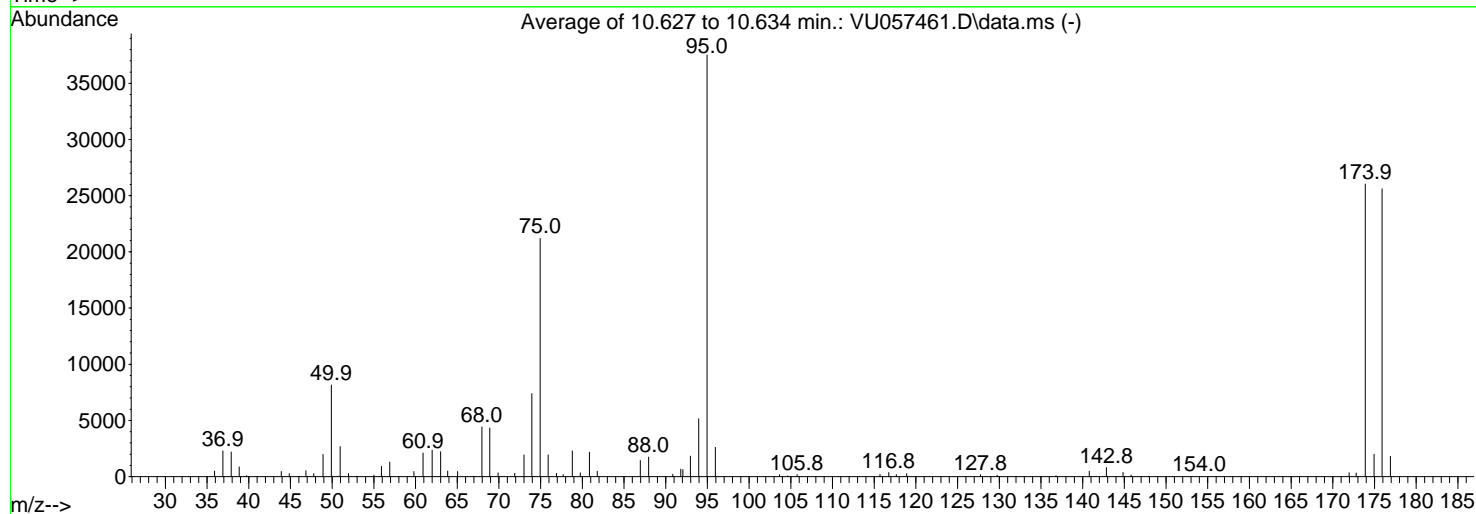
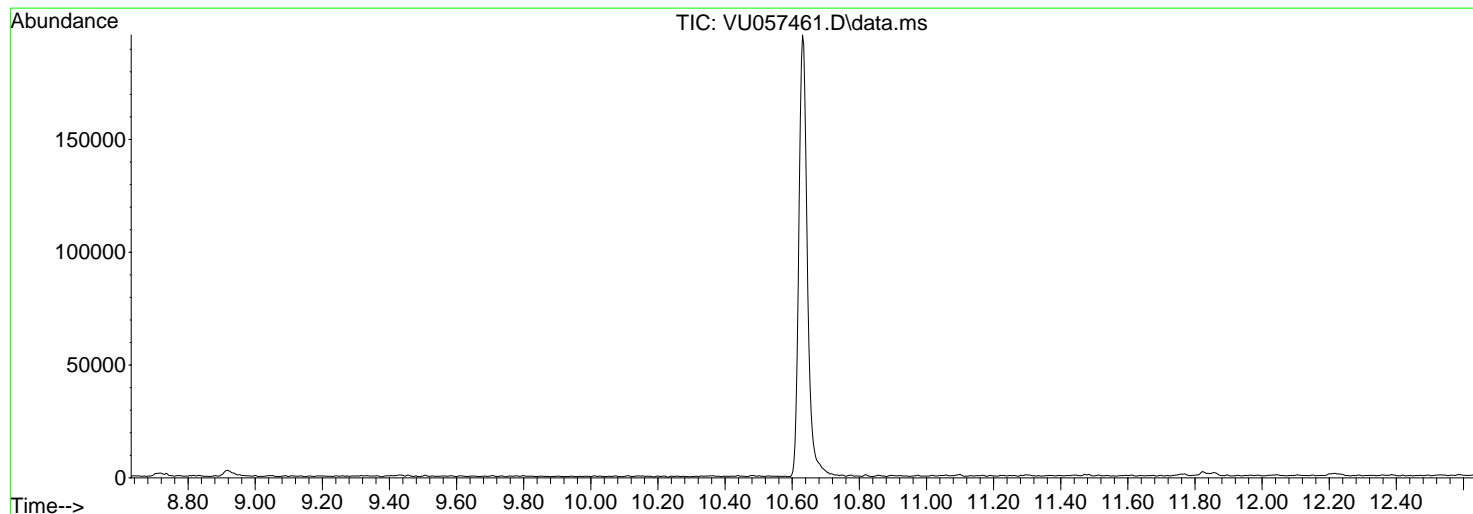


Data Path : Z:\voasrv\HPCHEM1\MSVOA_U\Data\VU011124\
 Data File : VU057461.D
 Acq On : 11 Jan 2024 15:30
 Operator : MD/SY
 Sample : BFB105
 Misc : 25.0mL/MSVOA_U/WATER
 ALS Vial : 1 Sample Multiplier: 1

Instrument :
 MSVOA_U
 ClientSampleId :
 BFB105

Integration File: rteint.p

Method : Z:\voasrv\HPCHEM1\MSVOA_U\Method\SFAMUTR011124WMA.M
 Title : TRACE VOA SFAM1.0
 Last Update : Thu Jan 11 21:30:43 2024



AutoFind: Scans 2904, 2905, 2906; Background Corrected with Scan 2892

Target Mass	Rel. to Mass	Lower Limit%	Upper Limit%	Rel. Abn%	Raw Abn	Result Pass/Fail
50	95	15	40	21.7	8154	PASS
75	95	30	80	56.5	21200	PASS
95	95	100	100	100.0	37533	PASS
96	95	5	9	6.9	2606	PASS
173	174	0.00	2	1.2	323	PASS
174	95	50	120	69.4	26048	PASS
175	174	5	9	7.7	1993	PASS
176	174	95	101	98.3	25616	PASS
177	176	5	9	7.0	1802	PASS

m/z	Abundance
39.80	203.0
43.80	344.0

Instrument :
MSVOA_U
ClientSampleId :
BFB105

m/z	Abundance
35.90	458.0
36.90	2370.0
37.90	2239.0
38.90	761.0
39.80	276.0
43.90	804.0
44.80	301.0
46.80	486.0
47.80	296.0
48.90	1899.0
49.90	8038.0
50.90	2573.0
52.00	235.0
54.90	170.0
55.90	867.0
56.90	1255.0
59.80	423.0
60.90	2103.0
62.00	2148.0
63.00	2128.0
63.80	422.0
65.00	372.0
67.90	4294.0
68.90	4353.0
69.90	304.0
71.90	252.0
73.00	1870.0
73.90	7312.0
74.90	20344.0
75.90	1974.0
76.90	360.0
77.70	188.0
78.80	2426.0
79.70	351.0
80.80	2089.0
81.80	456.0
86.90	1392.0
87.90	1672.0
90.90	225.0
91.80	998.0
92.90	1847.0
94.00	5104.0
94.90	36672.0
96.00	2654.0
103.70	183.0
104.60	116.0
105.80	186.0
115.70	147.0
116.80	414.0
117.60	152.0
118.90	258.0
127.70	159.0
129.80	147.0
136.80	137.0
140.80	537.0
142.80	876.0
144.90	408.0
145.80	121.0
147.90	103.0
172.00	314.0
172.90	314.0
173.90	24440.0
175.00	1907.0
175.90	24224.0
176.90	1718.0

Instrument :
MSVOA_U
ClientSampleId :
BFB105

m/z	Abundance
35.90	515.0
36.90	2366.0
37.90	2230.0
38.80	896.0
39.70	277.0
43.90	795.0
44.80	260.0
46.90	542.0
47.80	248.0
48.90	2062.0
49.90	8198.0
51.00	2765.0
52.00	304.0
55.00	152.0
55.90	924.0
56.90	1326.0
59.80	480.0
60.90	2159.0
62.00	2423.0
63.00	2298.0
63.80	520.0
65.10	468.0
68.00	4383.0
68.90	4455.0
69.90	338.0
71.90	314.0
73.00	1993.0
73.90	7585.0
74.90	21720.0
75.90	2011.0
76.90	300.0
77.70	179.0
78.80	2358.0
79.70	331.0
80.80	2221.0
81.80	510.0
86.90	1464.0
87.90	1794.0
90.90	216.0
91.80	1010.0
92.10	940.0
92.90	1819.0
94.00	5321.0
95.00	38400.0
95.90	2721.0
103.70	175.0
104.70	114.0
105.80	182.0
115.70	193.0
116.70	398.0
117.60	212.0
118.90	280.0
127.70	191.0
129.80	131.0
136.80	137.0
140.80	504.0
142.80	825.0
144.80	378.0
145.80	165.0
172.00	308.0
172.80	333.0
173.90	26792.0
175.00	2086.0
175.90	26440.0
176.90	1864.0

Instrument :
MSVOA_U
ClientSampleId :
BFB105

m/z	Abundance
35.90	525.0
36.90	2124.0
37.90	2090.0
38.80	964.0
39.80	295.0
44.00	821.0
44.90	266.0
46.10	108.0
46.90	553.0
47.80	286.0
48.90	2000.0
49.90	8225.0
51.00	2713.0
51.90	264.0
52.90	150.0
55.10	122.0
55.90	926.0
56.90	1305.0
59.80	446.0
60.90	2058.0
62.00	2508.0
63.00	2225.0
63.90	568.0
65.10	538.0
67.00	126.0
68.00	4594.0
68.90	4186.0
69.90	386.0
71.90	336.0
73.00	1938.0
74.00	7258.0
75.00	21536.0
75.90	1818.0
76.90	184.0
77.70	175.0
78.80	2091.0
79.80	341.0
80.90	2205.0
81.80	495.0
87.00	1476.0
88.00	1762.0
90.80	198.0
92.00	942.0
93.00	1796.0
93.90	5033.0
95.00	37528.0
95.90	2442.0
103.60	177.0
105.70	187.0
115.70	255.0
116.70	317.0
117.70	215.0
118.90	270.0
127.80	184.0
129.70	128.0
140.80	429.0
142.90	730.0
144.80	355.0
145.80	136.0
154.00	111.0
171.10	103.0
171.90	447.0
172.70	323.0
173.90	26912.0
174.90	1985.0
175.90	26184.0
176.90	1824.0

Instrument :
MSVOA_U
ClientSampleId :
BFB105