

Data Path : Z:\voasrv\HPCHEM1\MSVOA_U\Data\VU011421\
 Data File : VU042027.D
 Acq On : 14 Jan 2021 12:14
 Operator : SY/MD
 Sample : M1027-13DL 5X
 Misc : 25.0mL/MSVOA_U/WATER
 ALS Vial : 7 Sample Multiplier: 1

Instrument :
 MSVOA_U
 ClientSampleId :
 BFXK7DL

Integration Parameters: rteint.p
 Integrator: RTE
 Smoothing : ON Filtering: 5
 Sampling : 1 Min Area: 3 % of largest Peak
 Start Thrs: 0.1 Max Peaks: 100
 Stop Thrs : 0 Peak Location: TOP

If leading or trailing edge < 100 prefer < Baseline drop else tangent >
 Peak separation: 5

Method : Z:\VOASRV\HPCHEM1\MSVOA_U\METHOD\SOMUTR011321WMA.M
 Title : TRACE VOA SOM01.0

Signal : TIC: VU042027.D\data.ms

peak #	R.T. min	first scan	max scan	last scan	PK TY	peak height	corr. area	corr. % max.	% of total
1	1.601	74	81	91	rVB	59756	64224	10.27%	1.420%
2	1.919	171	180	193	rVB	62369	76220	12.18%	1.685%
3	2.575	371	384	399	rBV	101557	166040	26.54%	3.671%
4	3.057	520	534	546	rBV2	12466	23121	3.70%	0.511%
5	4.662	1014	1033	1071	rBV	64719	252207	40.32%	5.577%
6	5.080	1148	1163	1181	rBV	92247	205218	32.80%	4.538%
7	5.739	1346	1368	1394	rBV2	183535	476384	76.15%	10.533%
8	6.260	1516	1530	1552	rBV	152978	289417	46.26%	6.399%
9	6.552	1605	1621	1637	rBV	94659	178124	28.47%	3.938%
10	6.700	1655	1667	1686	rBV2	111868	217988	34.85%	4.820%
11	7.575	1926	1939	1953	rBV2	53710	94218	15.06%	2.083%
12	7.903	2028	2041	2059	rBV	228708	395652	63.25%	8.748%
13	8.186	2118	2129	2142	rBV	38212	64990	10.39%	1.437%
14	8.559	2231	2245	2258	rBV	204264	346990	55.47%	7.672%
15	8.642	2258	2271	2299	rVV	323474	625586	100.00%	13.832%
16	9.420	2500	2513	2531	rBV	213164	350573	56.04%	7.751%
17	10.755	2917	2928	2943	rBV	85093	136424	21.81%	3.016%
18	11.809	3244	3256	3271	rBV	177913	279714	44.71%	6.185%
19	12.189	3361	3374	3391	rVB	174265	279563	44.69%	6.181%

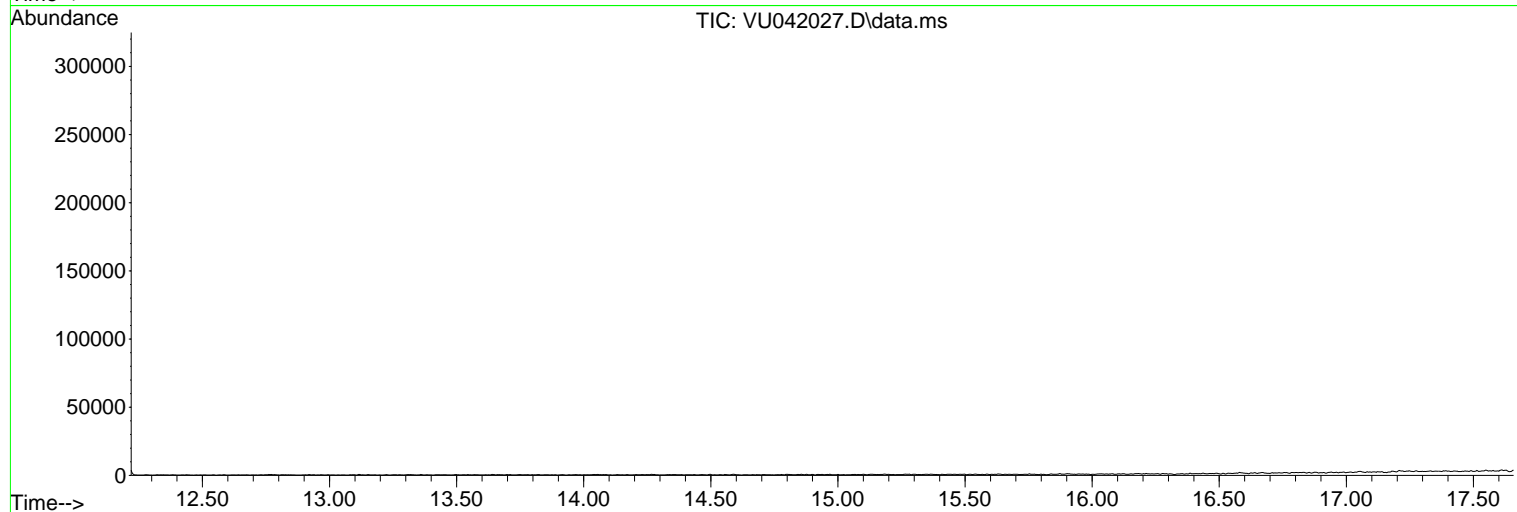
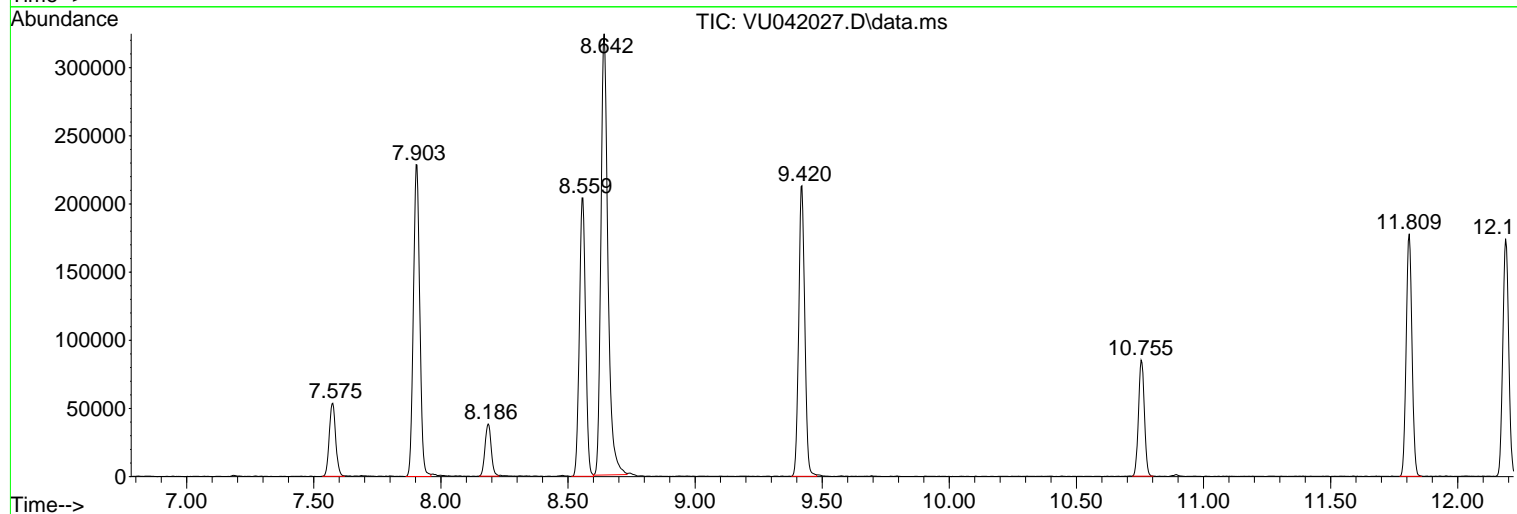
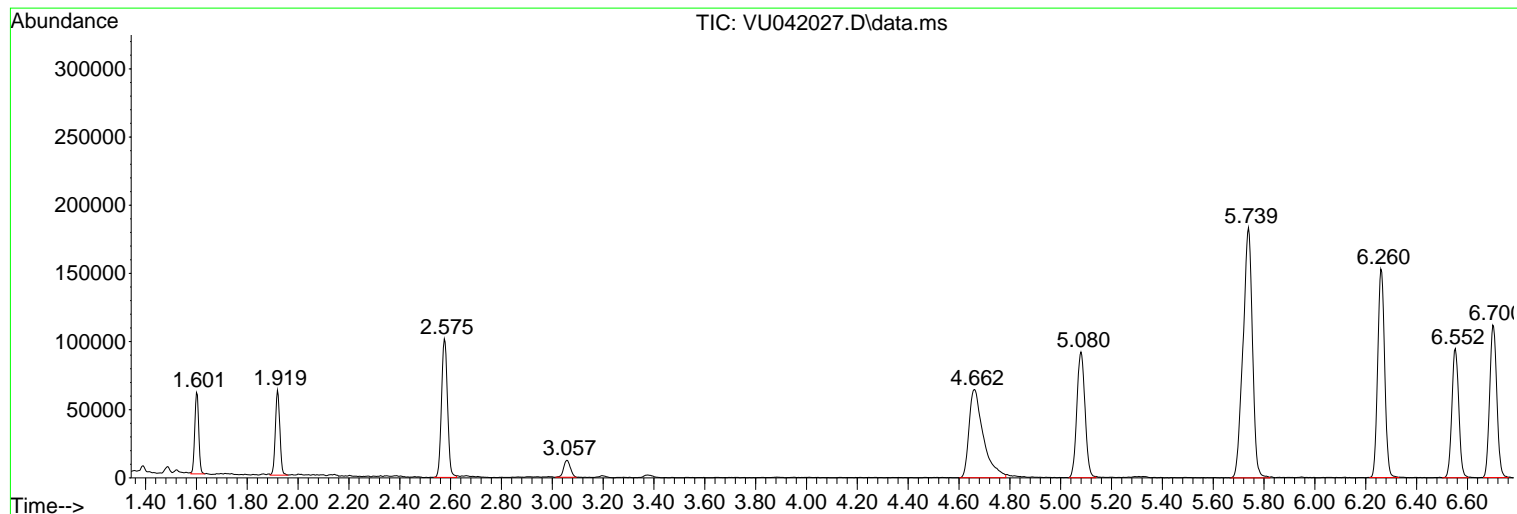
Sum of corrected areas: 4522653

Data Path : Z:\voasrv\HPCHEM1\MSVOA_U\Data\VU011421\
Data File : VU042027.D
Acq On : 14 Jan 2021 12:14
Operator : SY/MD
Sample : M1027-13DL 5X
Misc : 25.0mL/MSVOA_U/WATER
ALS Vial : 7 Sample Multiplier: 1

Instrument :
MSVOA_U
ClientSampled :
BFXK7DL

Quant Method : Z:\VOASRV\HPCHEM1\MSVOA_U\METHOD\SOMUTR011321WMA.M
Quant Title : TRACE VOA SOM01.0

TIC Library : C:\DATABASE\NIST11.L
TIC Integration Parameters: LSCINT.P



Data Path : Z:\voasrv\HPCHEM1\MSVOA_U\Data\VU011421\
Data File : VU042027.D
Acq On : 14 Jan 2021 12:14
Operator : SY/MD
Sample : M1027-13DL 5X
Misc : 25.0mL/MSVOA_U/WATER
ALS Vial : 7 Sample Multiplier: 1

Instrument :
MSVOA_U
ClientSampled :
BFXK7DL

Quant Method : Z:\VOASRV\HPCHEM1\MSVOA_U\METHOD\SOMUTR011321WMA.M
Quant Title : TRACE VOA SOM01.0

TIC Library : C:\DATABASE\NIST11.L
TIC Integration Parameters: LSCINT.P

No Library Search Compounds Detected

Data Path : Z:\voasrv\HPCHEM1\MSVOA_U\Data\VU011421\
Data File : VU042027.D
Acq On : 14 Jan 2021 12:14
Operator : SY/MD
Sample : M1027-13DL 5X
Misc : 25.0mL/MSVOA_U/WATER
ALS Vial : 7 Sample Multiplier: 1

Instrument :
MSVOA_U
ClientSampled :
BFXK7DL

Quant Method : Z:\VOASRV\HPCHEM1\MSVOA_U\METHOD\SOMUTR011321WMA.M
Quant Title : TRACE VOA SOM01.0

TIC Library : C:\DATABASE\NIST11.L
TIC Integration Parameters: LSCINT.P

TIC Top Hit name	RT	EstConc	Units	Response	--Internal Standard--			
					#	RT	Resp	Conc
