

Data Path : Z:\voasrv\HPCHEM1\MSVOA_U\Data\VU011521\
 Data File : VU042081.D
 Acq On : 15 Jan 2021 18:50
 Operator : SY/MD
 Sample : M1129-08
 Misc : 25.0mL/MSVOA_U/WATER
 ALS Vial : 24 Sample Multiplier: 1

Instrument :
 MSVOA_U
 ClientSampleId :
 VHBLK01

Integration Parameters: rteint.p
 Integrator: RTE
 Smoothing : ON Filtering: 5
 Sampling : 1 Min Area: 3 % of largest Peak
 Start Thrs: 0.1 Max Peaks: 100
 Stop Thrs : 0 Peak Location: TOP

If leading or trailing edge < 100 prefer < Baseline drop else tangent >
 Peak separation: 5

Method : Z:\VOASRV\HPCHEM1\MSVOA_U\METHOD\SOMUTR011321WMA.M
 Title : TRACE VOA SOM01.0

Signal : TIC: VU042081.D\data.ms

peak #	R.T. min	first scan	max scan	last scan	PK TY	peak height	corr. area	corr. % max.	% of total
1	1.600	74	81	91	rVB	57363	60162	8.78%	1.463%
2	1.919	171	180	192	rVB	61625	76417	11.16%	1.859%
3	2.575	373	384	403	rBV	101268	167056	24.39%	4.064%
4	3.060	526	535	545	rBV3	4289	6927	1.01%	0.169%
5	4.655	1011	1031	1087	rBV	85209	301087	43.95%	7.324%
6	5.079	1147	1163	1181	rBV	95933	206341	30.12%	5.019%
7	5.739	1345	1368	1395	rBV3	174039	459325	67.05%	11.173%
8	6.259	1515	1530	1550	rBV	142033	265463	38.75%	6.458%
9	6.703	1654	1668	1689	rVB	110881	215034	31.39%	5.231%
10	7.575	1926	1939	1953	rBV	52617	93225	13.61%	2.268%
11	7.906	2027	2042	2070	rBV	199785	343524	50.15%	8.356%
12	8.185	2118	2129	2145	rBV2	37492	61982	9.05%	1.508%
13	8.642	2256	2271	2303	rBV	355607	685034	100.00%	16.664%
14	9.420	2501	2513	2528	rBV	224040	365498	53.35%	8.891%
15	10.754	2916	2928	2945	rVB	105705	172178	25.13%	4.188%
16	11.809	3244	3256	3276	rVB	196085	311403	45.46%	7.575%
17	12.188	3362	3374	3390	rVB	195514	320205	46.74%	7.789%

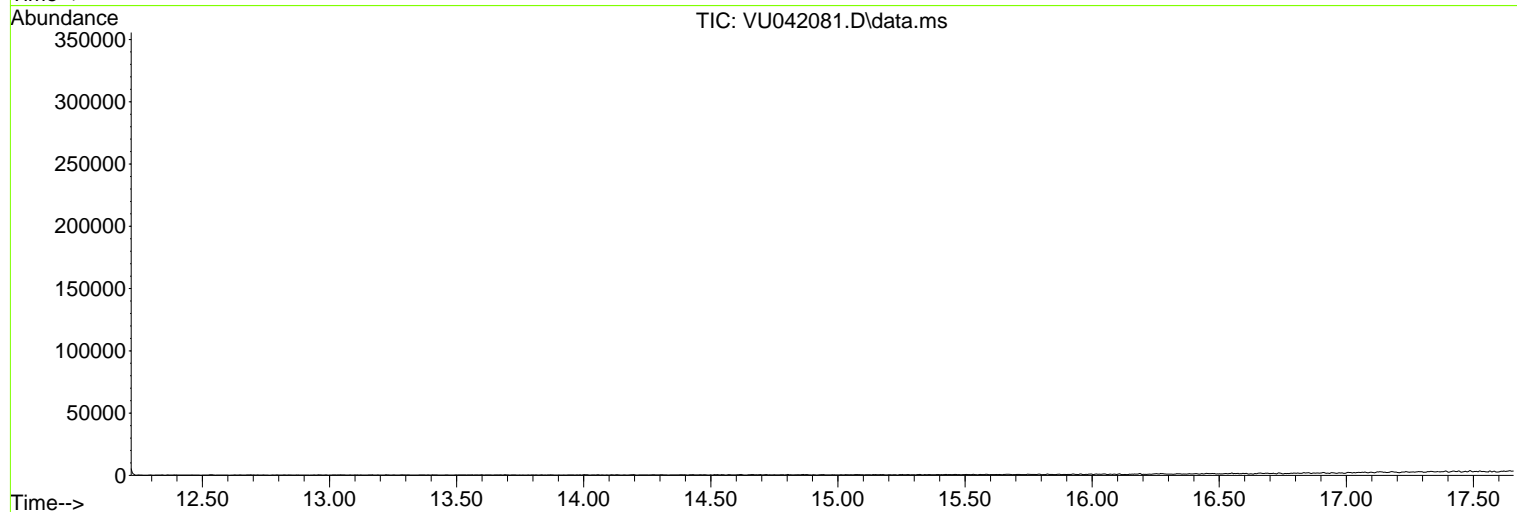
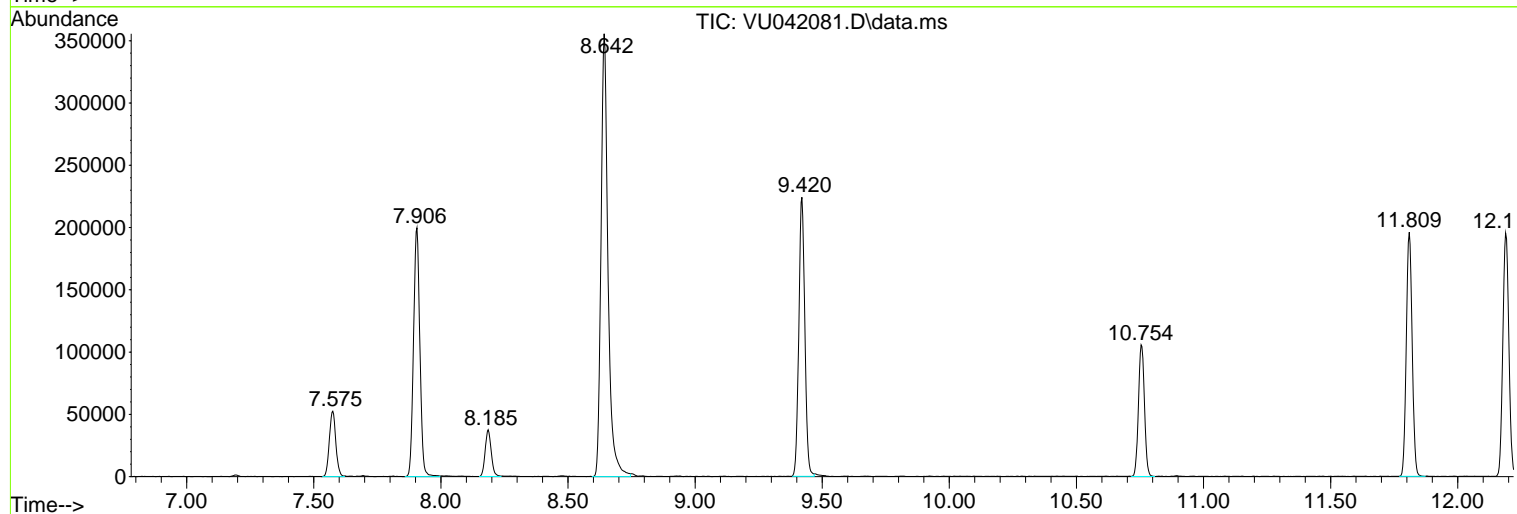
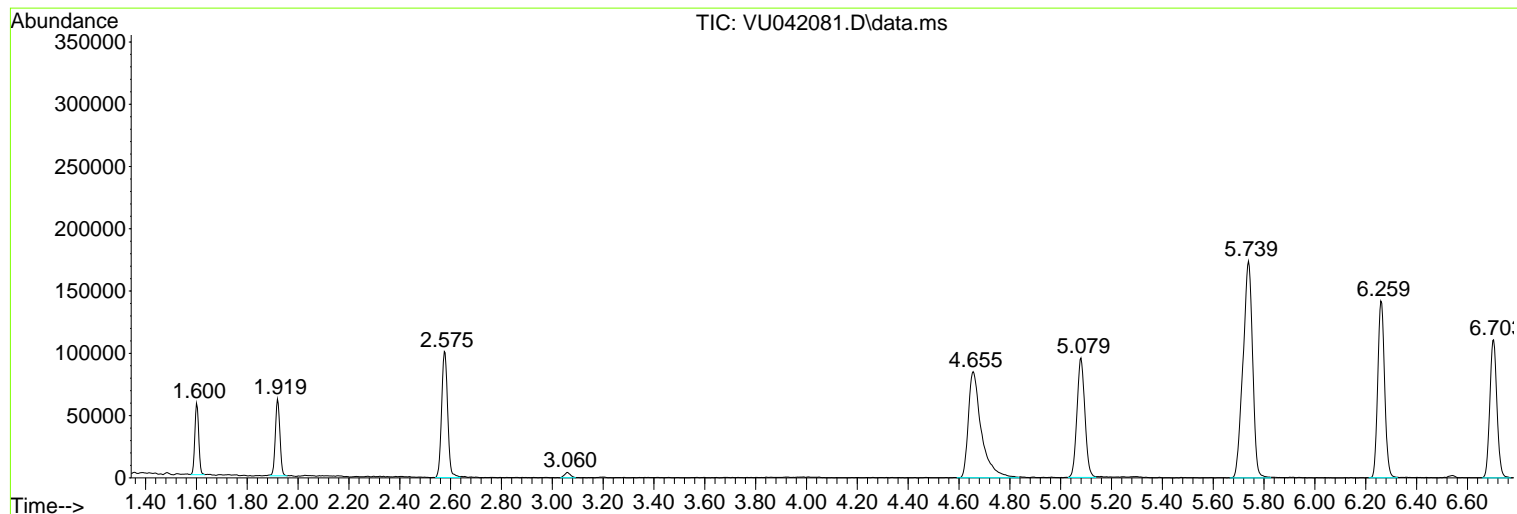
Sum of corrected areas: 4110861

Data Path : Z:\voasrv\HPCHEM1\MSVOA_U\Data\VU011521\
Data File : VU042081.D
Acq On : 15 Jan 2021 18:50
Operator : SY/MD
Sample : M1129-08
Misc : 25.0mL/MSVOA_U/WATER
ALS Vial : 24 Sample Multiplier: 1

Instrument :
MSVOA_U
ClientSampled :
VHBLK01

Quant Method : Z:\VOASRV\HPCHEM1\MSVOA_U\METHOD\SOMUTR011321WMA.M
Quant Title : TRACE VOA SOM01.0

TIC Library : C:\DATABASE\NIST11.L
TIC Integration Parameters: LSCINT.P



Data Path : Z:\voasrv\HPCHEM1\MSVOA_U\Data\VU011521\
Data File : VU042081.D
Acq On : 15 Jan 2021 18:50
Operator : SY/MD
Sample : M1129-08
Misc : 25.0mL/MSVOA_U/WATER
ALS Vial : 24 Sample Multiplier: 1

Instrument :
MSVOA_U
ClientSampled :
VHBLK01

Quant Method : Z:\VOASRV\HPCHEM1\MSVOA_U\METHOD\SOMUTR011321WMA.M
Quant Title : TRACE VOA SOM01.0

TIC Library : C:\DATABASE\NIST11.L
TIC Integration Parameters: LSCINT.P

No Library Search Compounds Detected

Data Path : Z:\voasrv\HPCHEM1\MSVOA_U\Data\VU011521\
Data File : VU042081.D
Acq On : 15 Jan 2021 18:50
Operator : SY/MD
Sample : M1129-08
Misc : 25.0mL/MSVOA_U/WATER
ALS Vial : 24 Sample Multiplier: 1

Instrument :
MSVOA_U
ClientSampled :
VHBLK01

Quant Method : Z:\VOASRV\HPCHEM1\MSVOA_U\METHOD\SOMUTR011321WMA.M
Quant Title : TRACE VOA SOM01.0

TIC Library : C:\DATABASE\NIST11.L
TIC Integration Parameters: LSCINT.P

TIC Top Hit name	RT	EstConc	Units	Response	--Internal Standard--		
					#	RT	Resp Conc
