

Data Path : Z:\voasrv\HPCHEM1\MSVOA\_U\Data\VU011524\  
 Data File : VU057531.D  
 Acq On : 15 Jan 2024 15:48  
 Operator : MD/SY  
 Sample : P1120-13  
 Misc : 25.0mL/MSVOA\_U/WATER  
 ALS Vial : 17 Sample Multiplier: 1

Instrument :  
 MSVOA\_U  
 ClientSampleId :

Quant Time: Jan 16 00:36:28 2024  
 Quant Method : Z:\voasrv\HPCHEM1\MSVOA\_U\Method\SFAMUTR011124WMA.M  
 Quant Title : TRACE VOA SFAM1.0  
 QLast Update : Tue Jan 16 00:31:32 2024  
 Response via : Initial Calibration

Compound	R.T.	QIon	Response	Conc	Units	Dev(Min)
Internal Standards						
1) 1,4-Difluorobenzene	6.245	114	264254	5.000	ug/L	0.00
28) Chlorobenzene-d5	9.412	117	237444	5.000	ug/L	0.00
58) 1,4-Dichlorobenzene-d4	11.807	152	101067	5.000	ug/L	0.00
System Monitoring Compounds						
4) Vinyl Chloride-d3	1.599	65	123663	4.612	ug/L	0.00
Spiked Amount	5.000	Range 40 - 130	Recovery	=	92.200%	
7) Chloroethane-d5	1.914	69	103912	4.981	ug/L	0.00
Spiked Amount	5.000	Range 65 - 130	Recovery	=	99.600%	
11) 1,1-Dichloroethene-d2	2.563	65	52903	4.666	ug/L	0.00
Spiked Amount	5.000	Range 60 - 125	Recovery	=	93.400%	
20) 2-Butanone-d5	4.641	46	210702	41.548	ug/L	0.00
Spiked Amount	50.000	Range 40 - 130	Recovery	=	83.100%	
24) Chloroform-d	5.055	84	232528	5.020	ug/L	0.00
Spiked Amount	5.000	Range 70 - 125	Recovery	=	100.400%	
26) 1,2-Dichloroethane-d4	5.695	65	111421	4.994	ug/L	0.00
Spiked Amount	5.000	Range 70 - 130	Recovery	=	99.800%	
32) Benzene-d6	5.721	84	449491	5.190	ug/L	0.00
Spiked Amount	5.000	Range 70 - 125	Recovery	=	103.800%	
36) 1,2-Dichloropropane-d6	6.685	67	143399	5.311	ug/L	0.00
Spiked Amount	5.000	Range 60 - 140	Recovery	=	106.200%	
41) Toluene-d8	7.894	98	343012	4.692	ug/L	0.00
Spiked Amount	5.000	Range 70 - 130	Recovery	=	93.800%	
43) trans-1,3-Dichloroprop...	8.174	79	39167	4.172	ug/L	0.00
Spiked Amount	5.000	Range 55 - 130	Recovery	=	83.400%	
46) 2-Hexanone-d5	8.631	63	105752	31.114	ug/L	0.00
Spiked Amount	50.000	Range 45 - 130	Recovery	=	62.220%	
56) 1,1,2,2-Tetrachloroeth...	10.750	84	91100	4.995	ug/L	0.00
Spiked Amount	5.000	Range 65 - 120	Recovery	=	99.800%	
66) 1,2-Dichlorobenzene-d4	12.187	152	107978	5.320	ug/L	0.00
Spiked Amount	5.000	Range 80 - 120	Recovery	=	106.400%	
Target Compounds						
5) Vinyl chloride	1.602	62	138470	6.946	ug/L	96
8) Chloroethane	1.933	64	5709	0.459	ug/L	99
12) 1,1-Dichloroethene	2.576	96	459894	29.787	ug/L #	66
13) Acetone	2.670	43	50526	16.573	ug/L	96
14) Carbon disulfide	2.792	76	32518	0.754	ug/L	99
15) Methyl Acetate	2.956	43	210834	30.591	ug/L	99
18) trans-1,2-Dichloroethene	3.351	96	17759	1.159	ug/L	95
19) 1,1-Dichloroethane	3.862	63	179042	5.178	ug/L	99
21) 2-Butanone	4.721	43	239209	55.468	ug/L	92
22) cis-1,2-Dichloroethene	4.657	96	778158	43.618	ug/L	97
27) 1,2-Dichloroethane	5.792	62	6272	0.290	ug/L	98
34) Trichloroethene	6.534	95	307991	16.806	ug/L	99
35) Methylcyclohexane	6.685	83	31931	1.311	ug/L #	15
37) 1,2-Dichloropropane	6.785	63	5845	0.295	ug/L #	98
39) cis-1,3-Dichloropropene	7.557	75	3166	0.121	ug/L #	76
42) Toluene	7.965	91	8241	0.120	ug/L	96
61) 1,2,3-Trichloropropane	11.807	75	13890	1.469	ug/L #	66

Data Path : Z:\voasrv\HPCHEM1\MSVOA\_U\Data\VU011524\  
Data File : VU057531.D  
Acq On : 15 Jan 2024 15:48  
Operator : MD/SY  
Sample : P1120-13  
Misc : 25.0mL/MSVOA\_U/WATER  
ALS Vial : 17 Sample Multiplier: 1

Instrument :  
MSVOA\_U  
ClientSampleId :

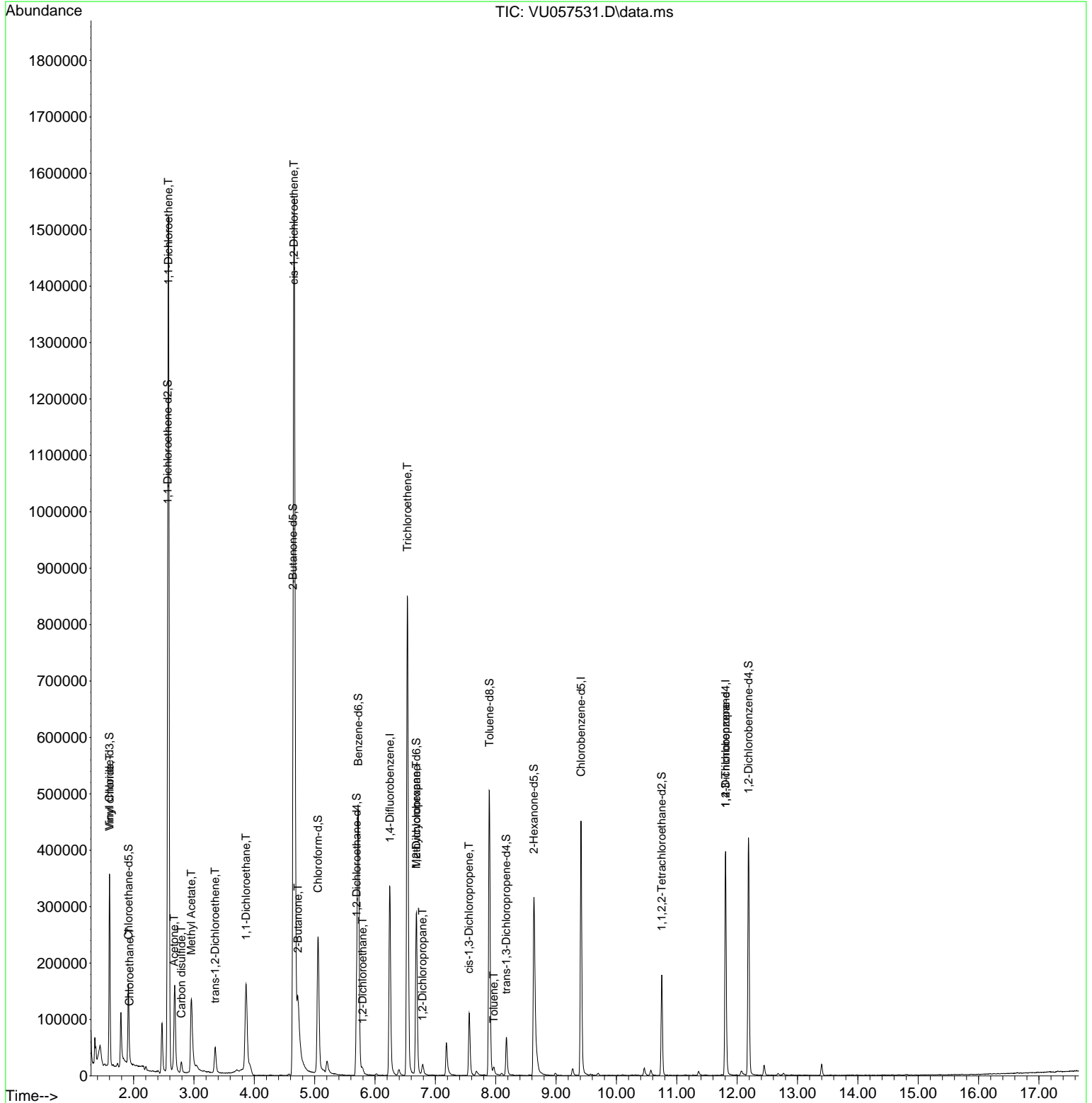
Quant Time: Jan 16 00:36:28 2024  
Quant Method : Z:\voasrv\HPCHEM1\MSVOA\_U\Method\SFAMUTR011124WMA.M  
Quant Title : TRACE VOA SFAM1.0  
QLast Update : Tue Jan 16 00:31:32 2024  
Response via : Initial Calibration

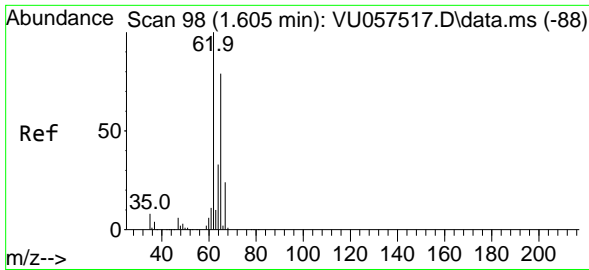
Compound	R.T.	QIon	Response	Conc	Units	Dev(Min)
-----						
(#) = qualifier out of range (m) = manual integration (+) = signals summed						

Data Path : Z:\voasrv\HPCHEM1\MSVOA\_U\Data\VU011524\  
 Data File : VU057531.D  
 Acq On : 15 Jan 2024 15:48  
 Operator : MD/SY  
 Sample : P1120-13  
 Misc : 25.0mL/MSVOA\_U/WATER  
 ALS Vial : 17 Sample Multiplier: 1

Instrument :  
 MSVOA\_U  
 ClientSampleId :

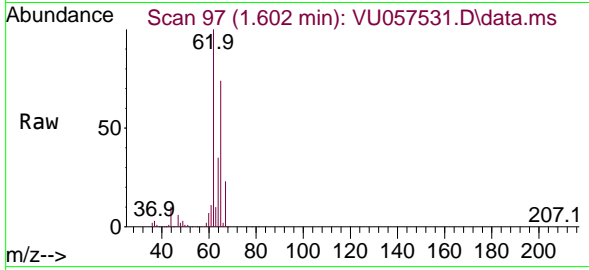
Quant Time: Jan 16 00:36:28 2024  
 Quant Method : Z:\voasrv\HPCHEM1\MSVOA\_U\Method\SFAMUTR011124WMA.M  
 Quant Title : TRACE VOA SFAM1.0  
 QLast Update : Tue Jan 16 00:31:32 2024  
 Response via : Initial Calibration



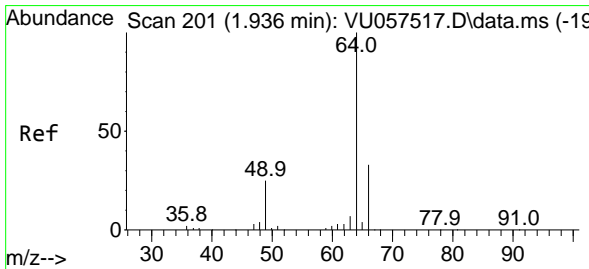
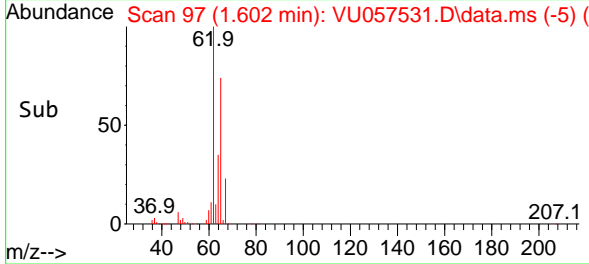
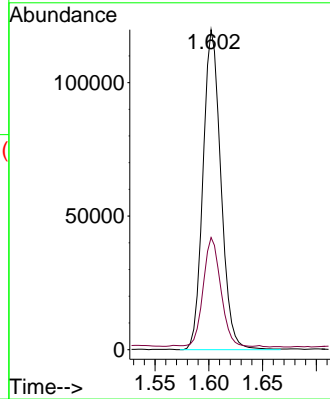


#5  
 Vinyl chloride  
 Concen: 6.946 ug/L  
 RT: 1.602 min Scan# 91  
 Delta R.T. -0.003 min  
 Lab File: VU057531.D  
 Acq: 15 Jan 2024 15:48

Instrument :  
 MSVOA\_U  
 ClientSampleId :

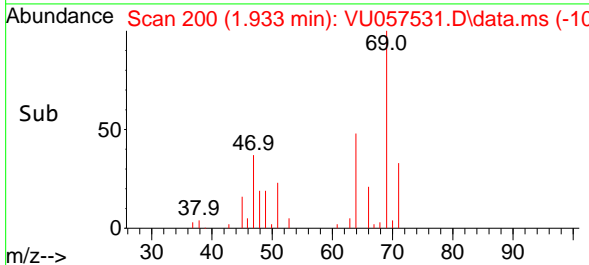
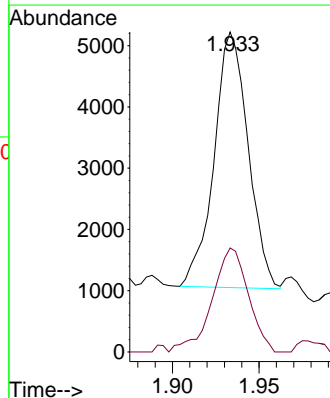
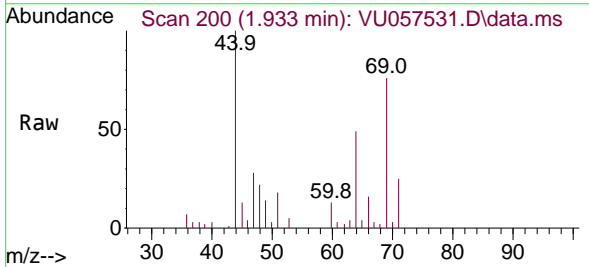


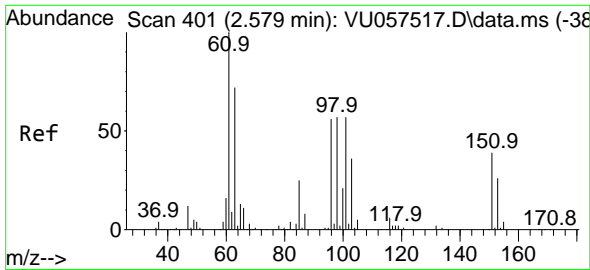
Tgt Ion: 62 Resp: 138470  
 Ion Ratio Lower Upper  
 62 100  
 64 35.1 22.9 42.5



#8  
 Chloroethane  
 Concen: 0.459 ug/L  
 RT: 1.933 min Scan# 200  
 Delta R.T. -0.003 min  
 Lab File: VU057531.D  
 Acq: 15 Jan 2024 15:48

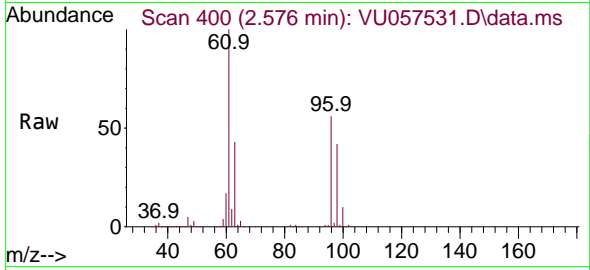
Tgt Ion: 64 Resp: 5709  
 Ion Ratio Lower Upper  
 64 100  
 66 32.5 23.3 43.3



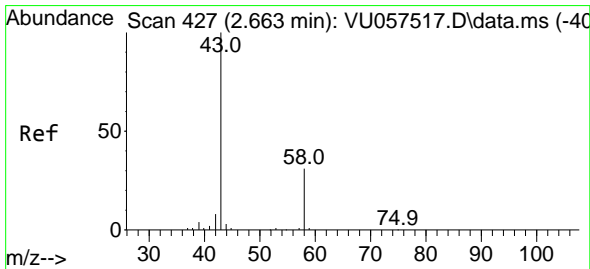
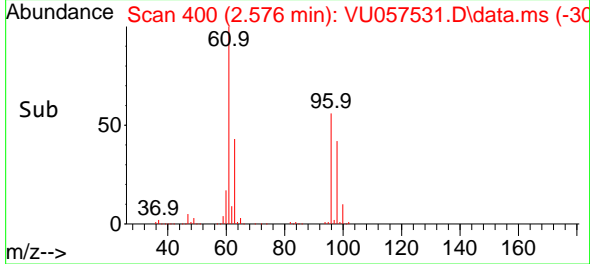
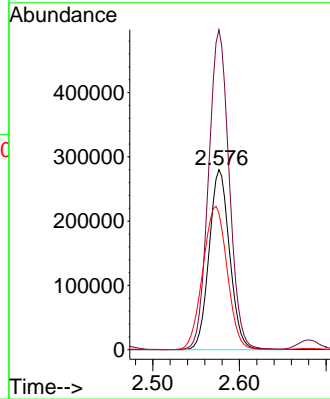


#12  
 1,1-Dichloroethene  
 Concen: 29.787 ug/L  
 RT: 2.576 min Scan# 401  
 Delta R.T. -0.003 min  
 Lab File: VU057531.D  
 Acq: 15 Jan 2024 15:48

Instrument :  
 MSVOA\_U  
 ClientSampleId :

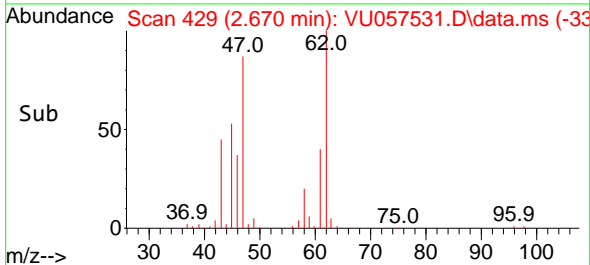
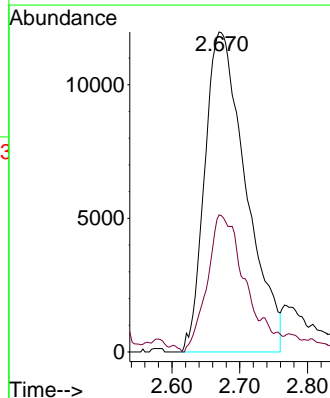
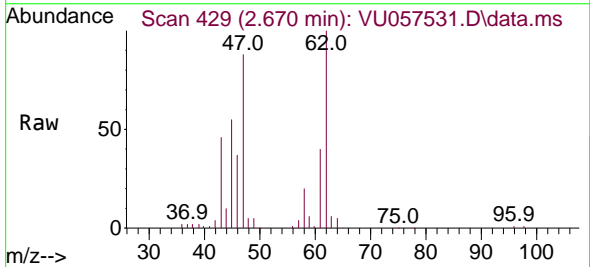


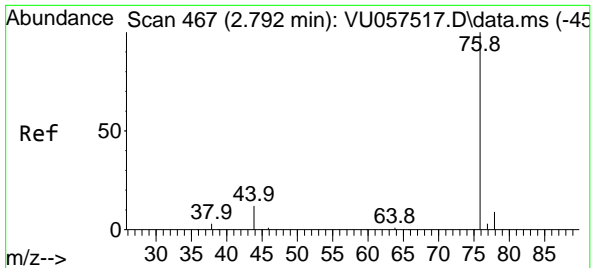
Tgt Ion: 96 Resp: 459894  
 Ion Ratio Lower Upper  
 96 100  
 61 177.8 130.9 243.1  
 63 75.8 114.8 213.2#



#13  
 Acetone  
 Concen: 16.573 ug/L  
 RT: 2.670 min Scan# 429  
 Delta R.T. 0.007 min  
 Lab File: VU057531.D  
 Acq: 15 Jan 2024 15:48

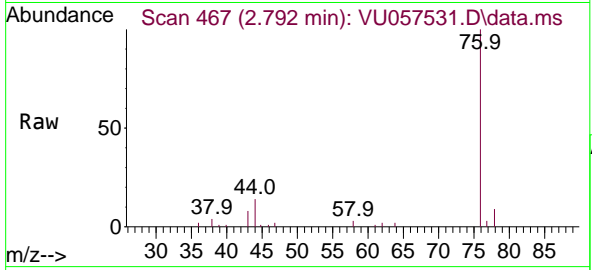
Tgt Ion: 43 Resp: 50526  
 Ion Ratio Lower Upper  
 43 100  
 58 36.4 0.0 67.8



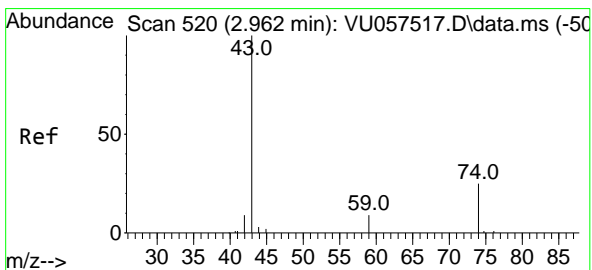
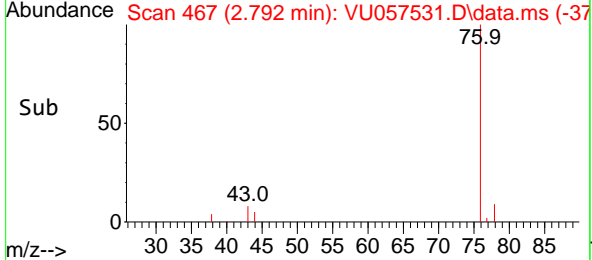
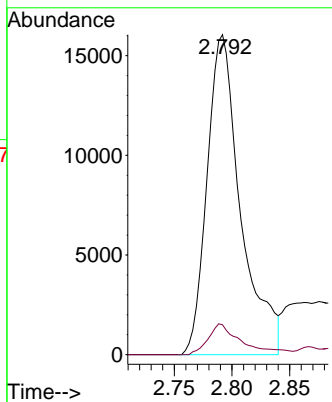


#14  
 Carbon disulfide  
 Concen: 0.754 ug/L  
 RT: 2.792 min Scan# 40  
 Delta R.T. 0.000 min  
 Lab File: VU057531.D  
 Acq: 15 Jan 2024 15:48

Instrument : MSVOA\_U  
 ClientSampleId :

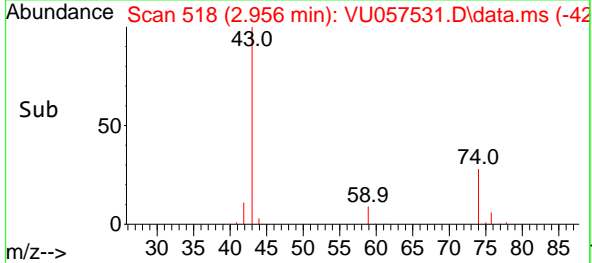
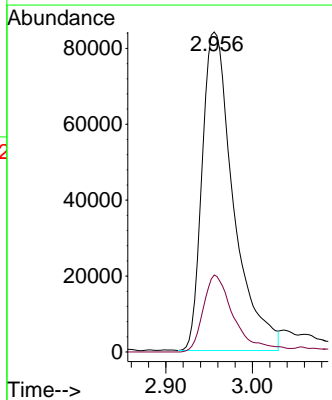
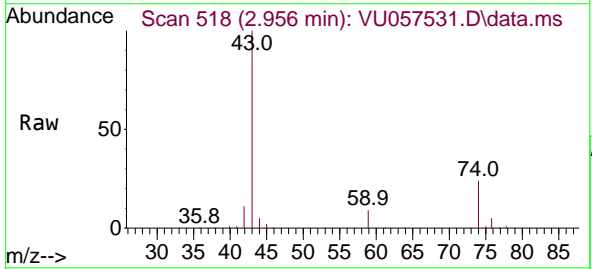


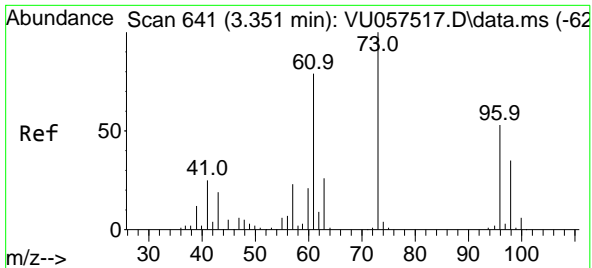
Tgt Ion	Resp	Ion Ratio	Lower	Upper
76	32518	100		
78		9.4	7.3	10.9



#15  
 Methyl Acetate  
 Concen: 30.591 ug/L  
 RT: 2.956 min Scan# 518  
 Delta R.T. -0.006 min  
 Lab File: VU057531.D  
 Acq: 15 Jan 2024 15:48

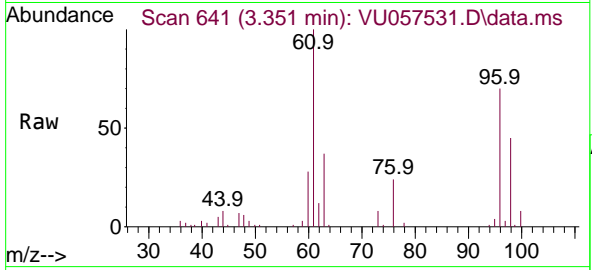
Tgt Ion	Resp	Ion Ratio	Lower	Upper
43	210834	100		
74		23.8	18.6	27.8





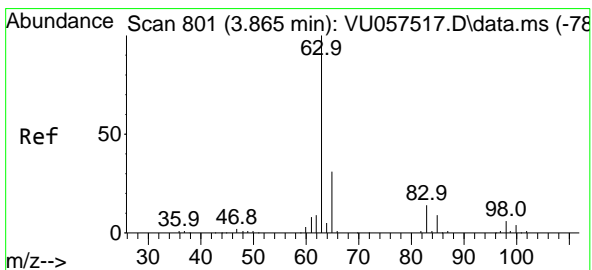
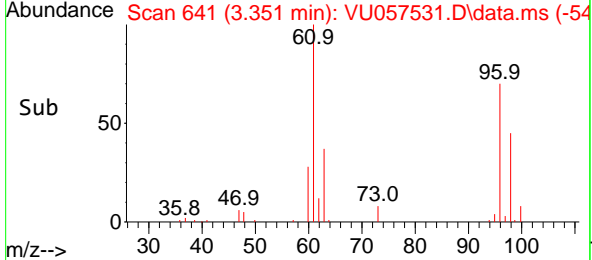
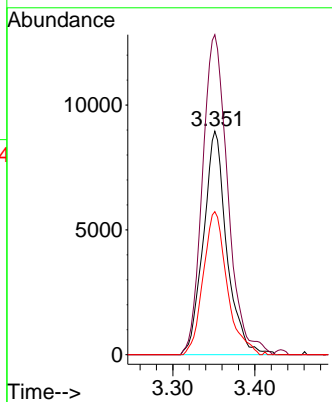
#18  
 trans-1,2-Dichloroethene  
 Concen: 1.159 ug/L  
 RT: 3.351 min Scan# 641  
 Delta R.T. 0.000 min  
 Lab File: VU057531.D  
 Acq: 15 Jan 2024 15:48

Instrument : MSVOA\_U  
 ClientSampleId :



Tgt Ion: 96 Resp: 17759

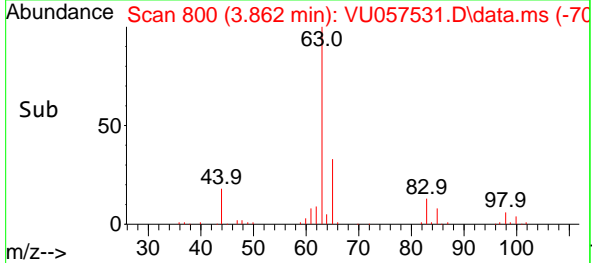
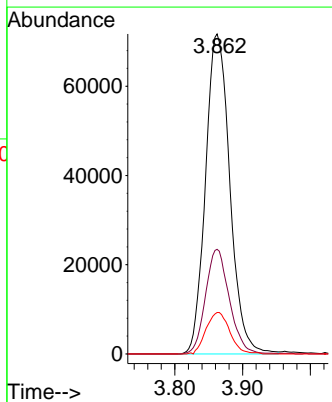
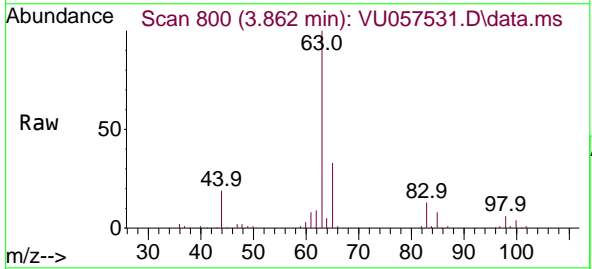
Ion	Ratio	Lower	Upper
96	100		
61	143.1	105.1	195.3
98	64.0	43.7	81.1

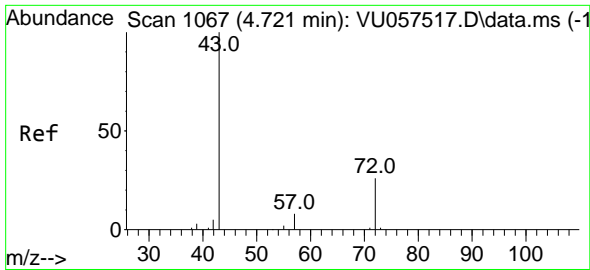


#19  
 1,1-Dichloroethane  
 Concen: 5.178 ug/L  
 RT: 3.862 min Scan# 800  
 Delta R.T. -0.003 min  
 Lab File: VU057531.D  
 Acq: 15 Jan 2024 15:48

Tgt Ion: 63 Resp: 179042

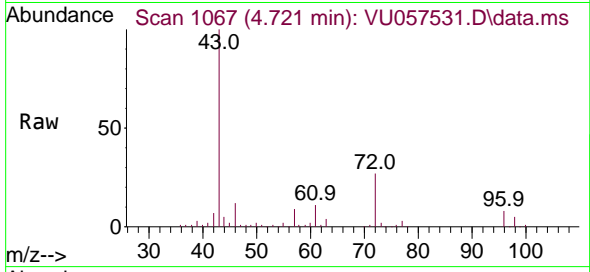
Ion	Ratio	Lower	Upper
63	100		
65	32.7	22.3	41.3
83	12.9	9.1	16.9



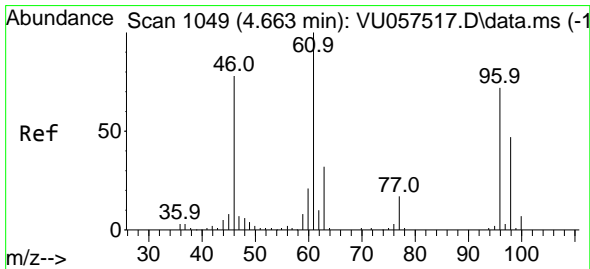
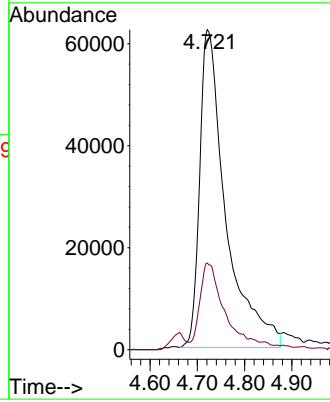
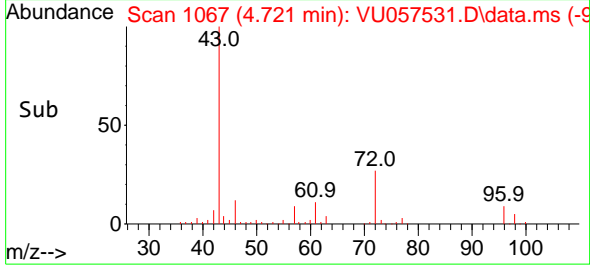


#21  
 2-Butanone  
 Concen: 55.468 ug/L  
 RT: 4.721 min Scan# 1067  
 Delta R.T. 0.000 min  
 Lab File: VU057531.D  
 Acq: 15 Jan 2024 15:48

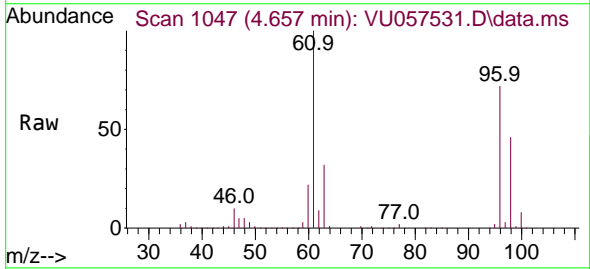
Instrument :  
 MSVOA\_U  
 ClientSampleId :



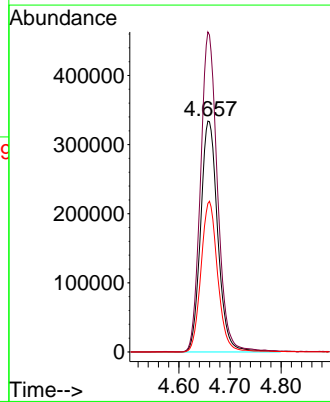
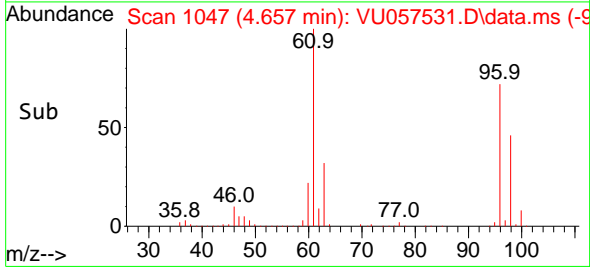
Tgt Ion: 43 Resp: 239209  
 Ion Ratio Lower Upper  
 43 100  
 72 21.3 12.7 38.0



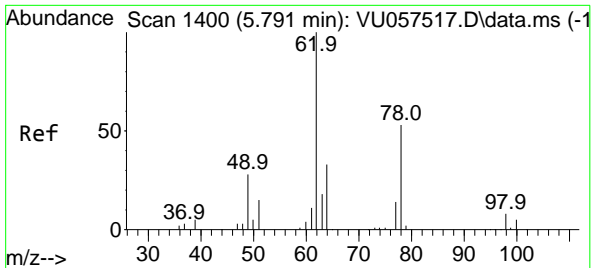
#22  
 cis-1,2-Dichloroethene  
 Concen: 43.618 ug/L  
 RT: 4.657 min Scan# 1047  
 Delta R.T. -0.006 min  
 Lab File: VU057531.D  
 Acq: 15 Jan 2024 15:48



Tgt Ion: 96 Resp: 778158  
 Ion Ratio Lower Upper  
 96 100  
 61 138.6 93.4 173.4  
 98 64.3 44.9 83.3

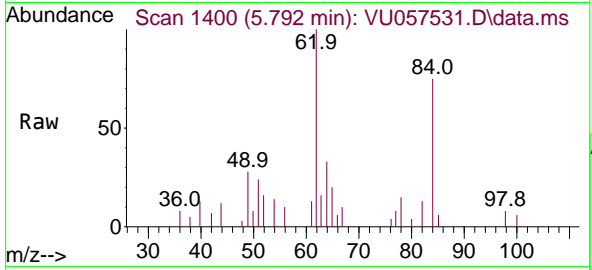




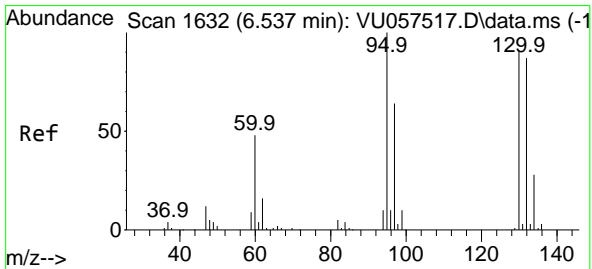
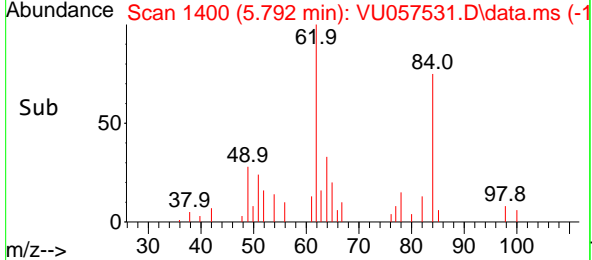
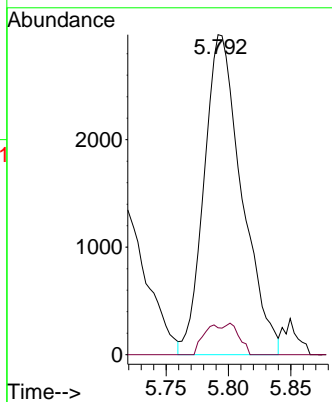


#27  
 1,2-Dichloroethane  
 Concen: 0.290 ug/L  
 RT: 5.792 min Scan# 14  
 Delta R.T. 0.000 min  
 Lab File: VU057531.D  
 Acq: 15 Jan 2024 15:48

Instrument : MSVOA\_U  
 ClientSampleId :

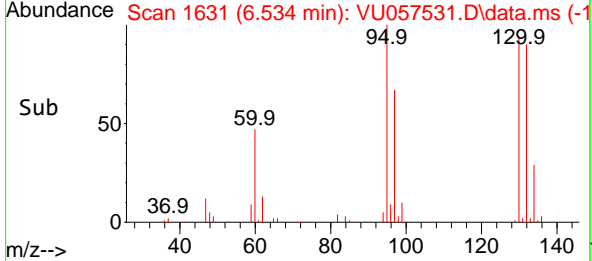
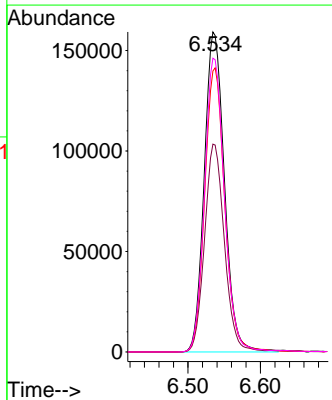
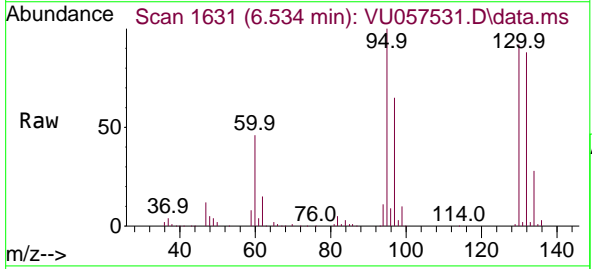


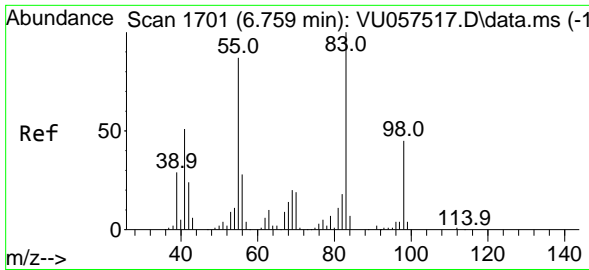
Tgt Ion: 62 Resp: 6272  
 Ion Ratio Lower Upper  
 62 100  
 98 8.4 7.4 11.0



#34  
 Trichloroethene  
 Concen: 16.806 ug/L  
 RT: 6.534 min Scan# 1631  
 Delta R.T. -0.003 min  
 Lab File: VU057531.D  
 Acq: 15 Jan 2024 15:48

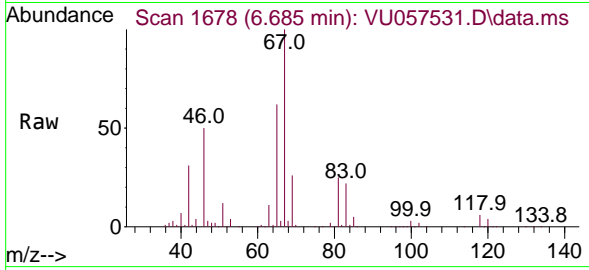
Tgt Ion: 95 Resp: 307991  
 Ion Ratio Lower Upper  
 95 100  
 97 65.0 45.0 83.6  
 132 87.8 61.7 114.5  
 130 91.8 63.1 117.3



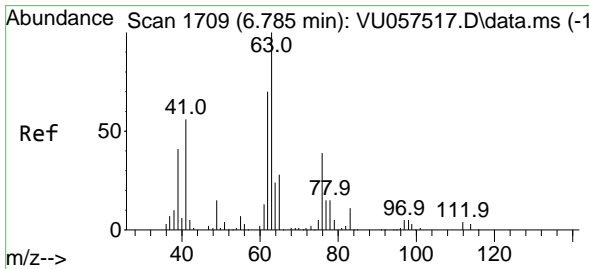
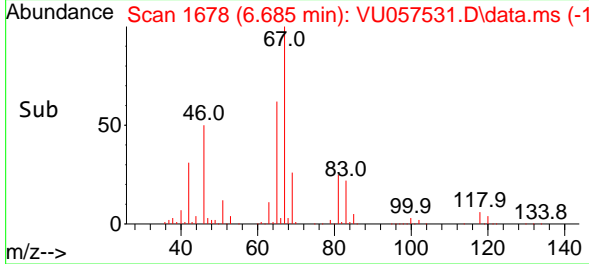
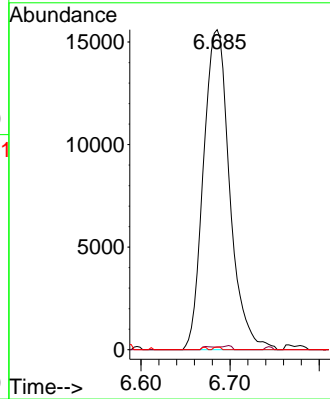


#35  
 Methylcyclohexane  
 Concen: 1.311 ug/L  
 RT: 6.685 min Scan# 1701  
 Delta R.T. -0.074 min  
 Lab File: VU057531.D  
 Acq: 15 Jan 2024 15:48

Instrument :  
 MSVOA\_U  
 ClientSampleId :

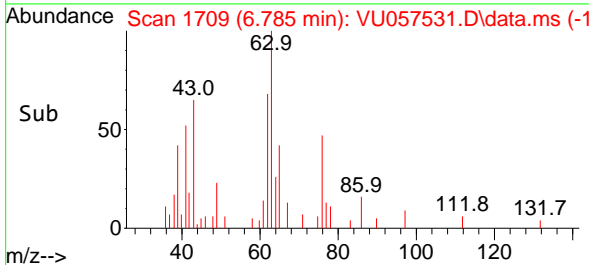
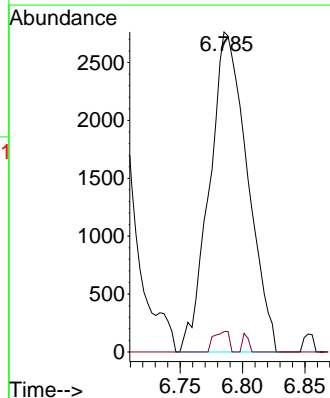
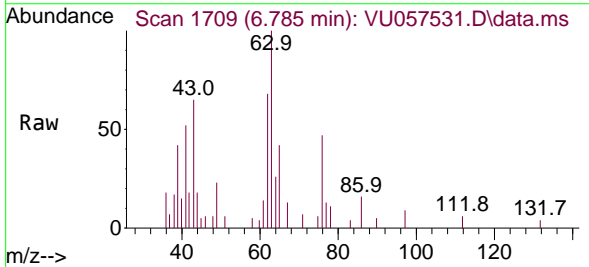


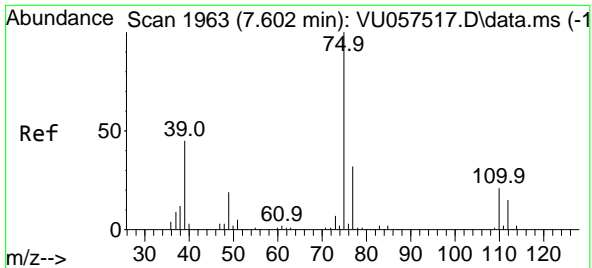
Tgt Ion: 83 Resp: 31931  
 Ion Ratio Lower Upper  
 83 100  
 55 0.5 68.7 103.1#  
 98 0.0 36.3 54.5#



#37  
 1,2-Dichloropropane  
 Concen: 0.295 ug/L  
 RT: 6.785 min Scan# 1709  
 Delta R.T. 0.000 min  
 Lab File: VU057531.D  
 Acq: 15 Jan 2024 15:48

Tgt Ion: 63 Resp: 5845  
 Ion Ratio Lower Upper  
 63 100  
 112 2.6 2.7 4.1#

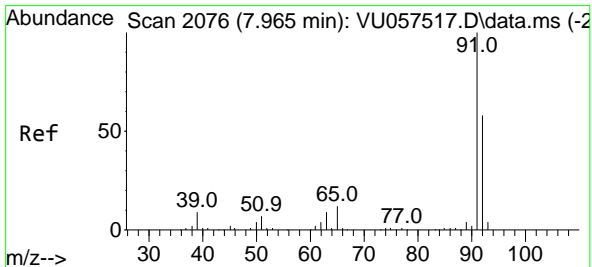
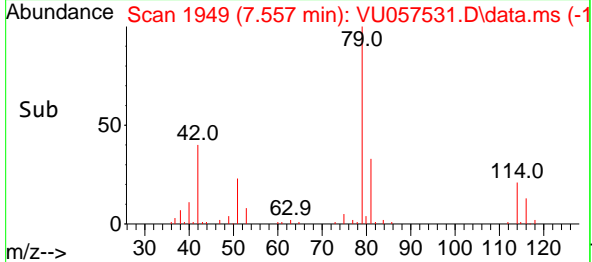
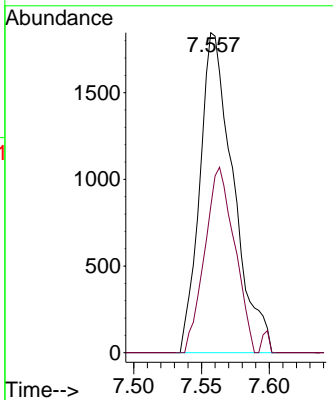
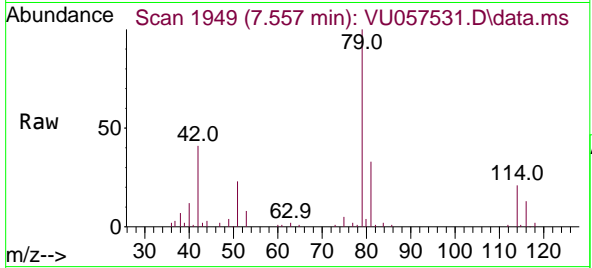




#39  
 cis-1,3-Dichloropropene  
 Concen: 0.121 ug/L  
 RT: 7.557 min Scan# 1963  
 Delta R.T. -0.045 min  
 Lab File: VU057531.D  
 Acq: 15 Jan 2024 15:48

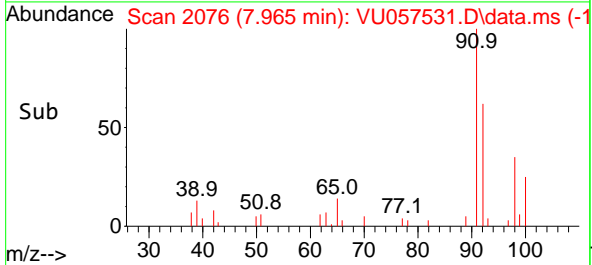
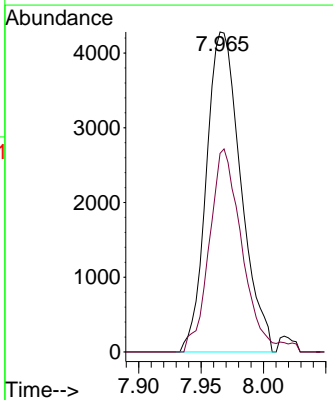
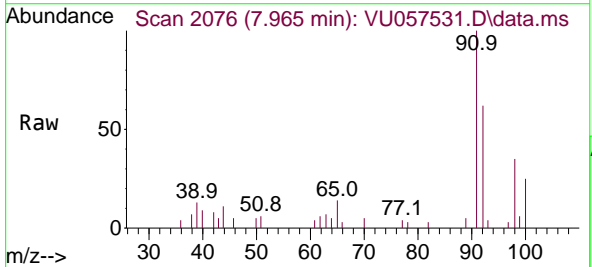
Instrument : MSVOA\_U  
 ClientSampleId :

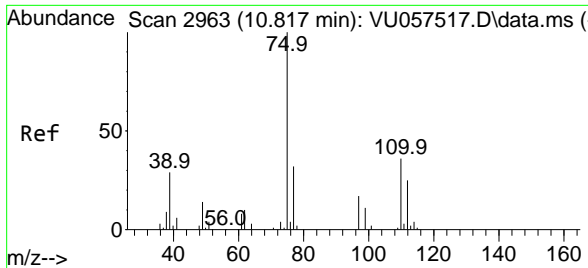
Tgt Ion: 75 Resp: 3166  
 Ion Ratio Lower Upper  
 75 100  
 77 45.7 22.5 41.9#



#42  
 Toluene  
 Concen: 0.120 ug/L  
 RT: 7.965 min Scan# 2076  
 Delta R.T. 0.000 min  
 Lab File: VU057531.D  
 Acq: 15 Jan 2024 15:48

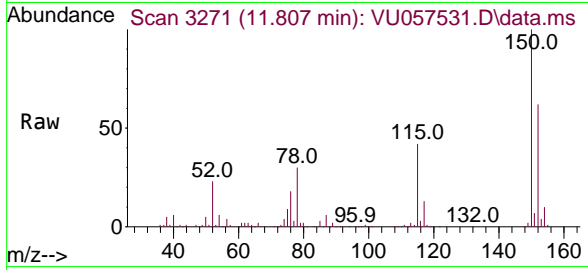
Tgt Ion: 91 Resp: 8241  
 Ion Ratio Lower Upper  
 91 100  
 92 62.1 41.2 76.4





#61  
 1,2,3-Trichloropropane  
 Concen: 1.469 ug/L  
 RT: 11.807 min Scan# 31  
 Delta R.T. 0.991 min  
 Lab File: VU057531.D  
 Acq: 15 Jan 2024 15:48

Instrument :  
 MSVOA\_U  
 ClientSampleId :



Tgt Ion: 75 Resp: 13890

Ion	Ratio	Lower	Upper
75	100		
110	0.8	29.4	44.0#
77	35.1	26.2	39.4

