

Data Path : Z:\voasrv\HPCHEM1\MSVOA_U\Data\VU011524\
 Data File : VU057526.D
 Acq On : 15 Jan 2024 13:48
 Operator : MD/SY
 Sample : P1120-15
 Misc : 25.0mL/MSVOA_U/WATER
 ALS Vial : 12 Sample Multiplier: 1

Instrument :
 MSVOA_U
 ClientSampleId :
 BGWJ1

Integration Parameters: rteint.p
 Integrator: RTE
 Smoothing : ON Filtering: 5
 Sampling : 1 Min Area: 3 % of largest Peak
 Start Thrs: 0.1 Max Peaks: 100
 Stop Thrs : 0 Peak Location: TOP

If leading or trailing edge < 100 prefer < Baseline drop else tangent >
 Peak separation: 5

Method : Z:\voasrv\HPCHEM1\MSVOA_U\Method\SFAMUTR011124WMA.M
 Title : TRACE VOA SFAM1.0

Signal : TIC: VU057526.D\data.ms

peak #	R.T. min	first scan	max scan	last scan	PK TY	peak height	corr. area	corr. % max.	% of total
1	1.599	88	96	111	rVB2	210418	257744	15.73%	2.181%
2	1.914	185	194	214	rVB2	152194	239566	14.62%	2.027%
3	2.567	383	397	418	rBV2	375119	727826	44.43%	6.159%
4	2.789	456	466	479	rBV2	12755	23156	1.41%	0.196%
5	3.358	628	643	665	rBV2	43398	105281	6.43%	0.891%
6	3.862	785	800	823	rBV	156039	388905	23.74%	3.291%
7	4.653	1031	1046	1090	rBV4	151805	530491	32.38%	4.489%
8	5.055	1155	1171	1197	rBV	265603	603779	36.86%	5.109%
9	5.309	1236	1250	1266	rBV3	25741	58324	3.56%	0.494%
10	5.721	1356	1378	1406	rBV2	496134	1299983	79.35%	11.000%
11	6.245	1526	1541	1559	rBV	331235	649220	39.63%	5.494%
12	6.534	1617	1631	1662	rBV	856404	1638196	100.00%	13.862%
13	6.682	1664	1677	1709	rVB2	281643	570354	34.82%	4.826%
14	7.560	1937	1950	1973	rBV2	104719	193444	11.81%	1.637%
15	7.891	2039	2053	2069	rBV	480470	859095	52.44%	7.270%
16	7.968	2069	2077	2089	rVB2	27702	53070	3.24%	0.449%
17	8.177	2130	2142	2159	rBV	63146	117576	7.18%	0.995%
18	8.550	2244	2258	2272	rBV2	38450	67046	4.09%	0.567%
19	8.634	2272	2284	2328	rBV3	353435	862183	52.63%	7.296%
20	9.412	2514	2526	2560	rBV	477784	851087	51.95%	7.202%
21	10.750	2930	2942	2960	rBV	192744	317966	19.41%	2.691%
22	11.807	3259	3271	3295	rBV	386975	650810	39.73%	5.507%
23	12.187	3376	3389	3415	rBV	444149	752609	45.94%	6.368%

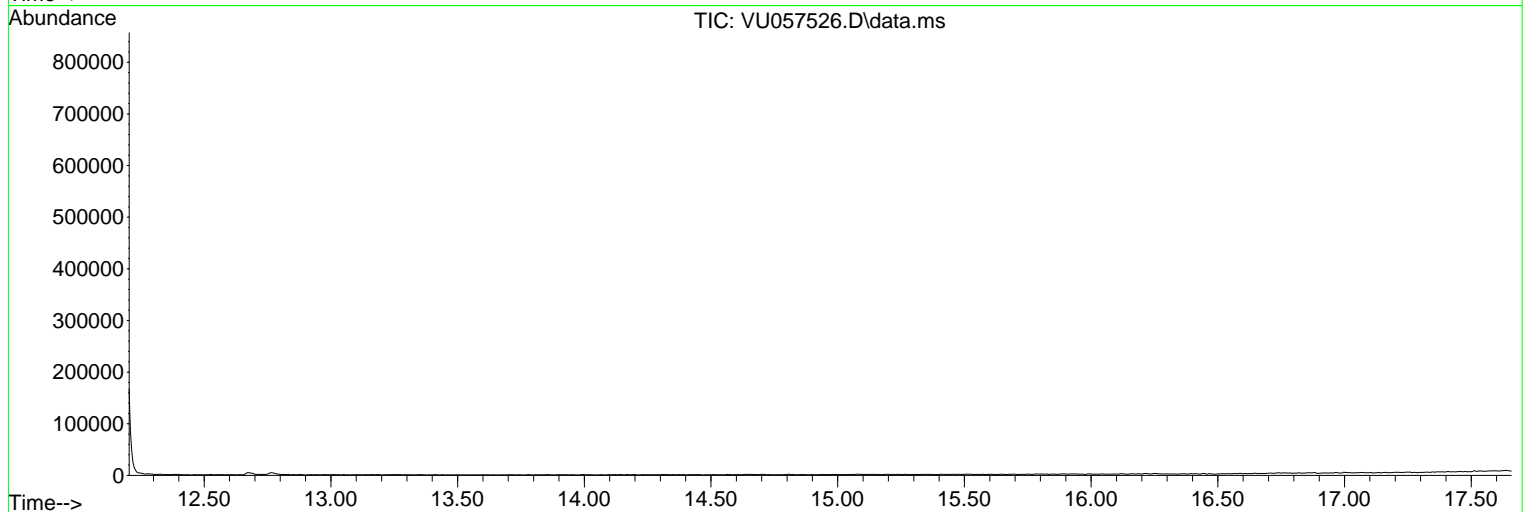
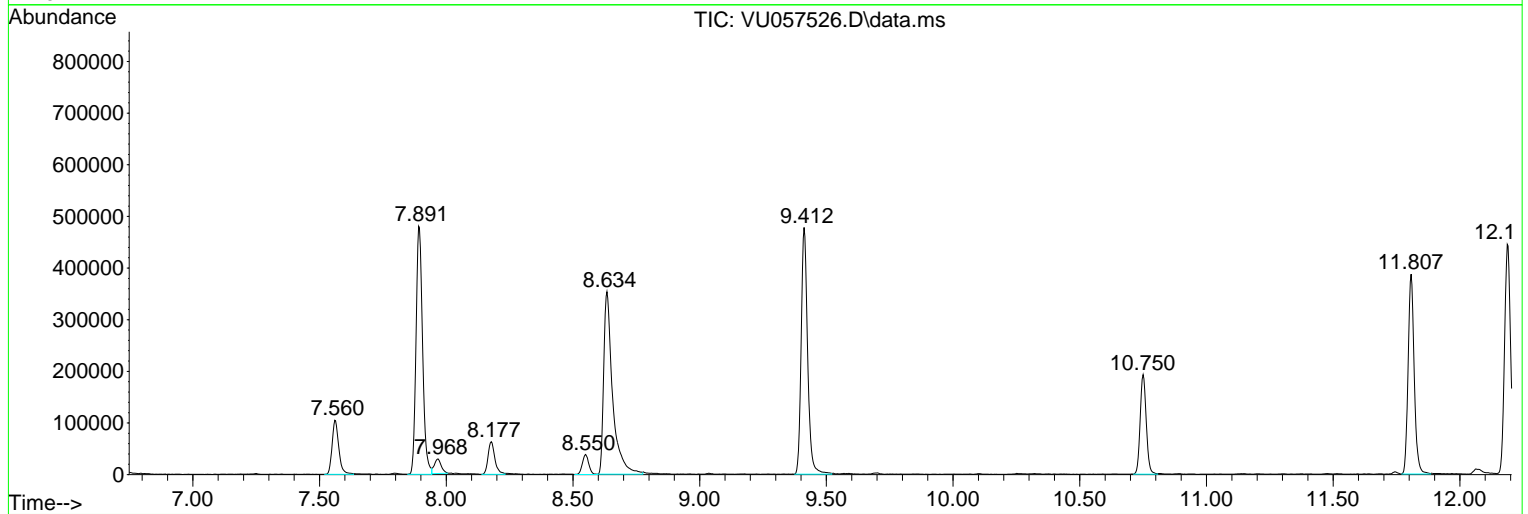
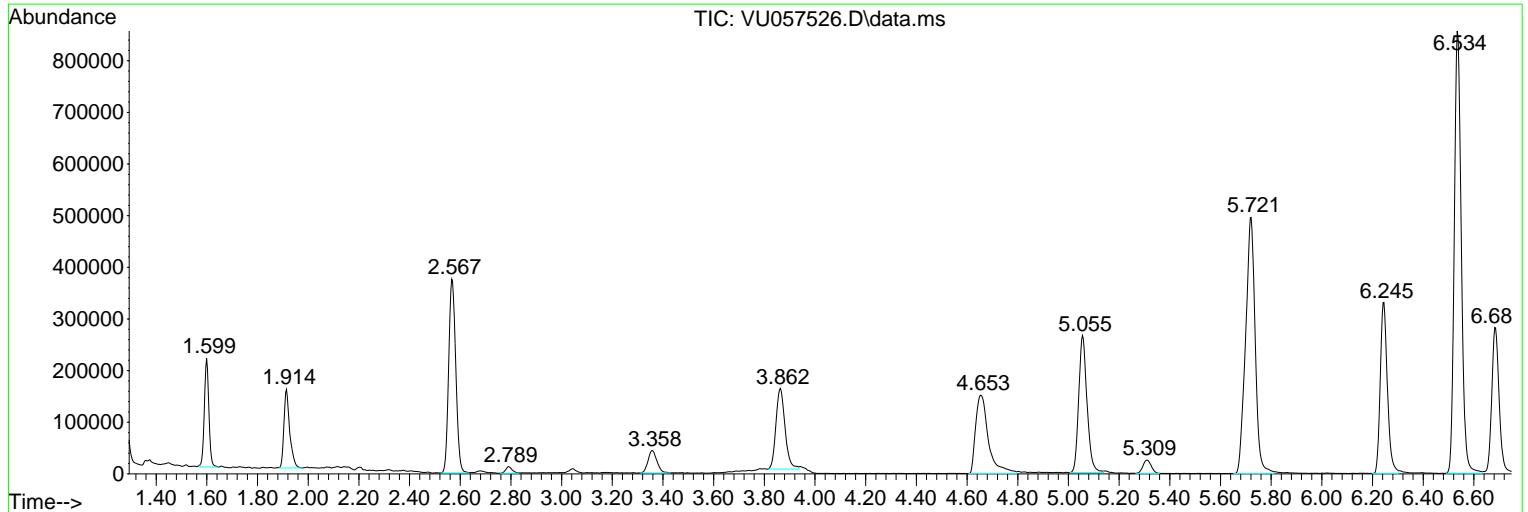
Sum of corrected areas: 11817711

Data Path : Z:\voasrv\HPCHEM1\MSVOA_U\Data\VU011524\
 Data File : VU057526.D
 Acq On : 15 Jan 2024 13:48
 Operator : MD/SY
 Sample : P1120-15
 Misc : 25.0mL/MSVOA_U/WATER
 ALS Vial : 12 Sample Multiplier: 1

Instrument :
 MSVOA_U
 ClientSampleId :
 BGWJ1

Quant Method : Z:\voasrv\HPCHEM1\MSVOA_U\Method\SFAMUTR011124WMA.M
 Quant Title : TRACE VOA SFAM1.0

TIC Library : C:\Database\NIST20.L
 TIC Integration Parameters: LSCINT.P



Library Search Compound Report

Data Path : Z:\voasrv\HPCHEM1\MSVOA_U\Data\VU011524\
Data File : VU057526.D
Acq On : 15 Jan 2024 13:48
Operator : MD/SY
Sample : P1120-15
Misc : 25.0mL/MSVOA_U/WATER
ALS Vial : 12 Sample Multiplier: 1

Instrument :
MSVOA_U
ClientSampleId :
BGWJ1

Quant Method : Z:\voasrv\HPCHEM1\MSVOA_U\Method\SFAMUTR011124WMA.M
Quant Title : TRACE VOA SFAM1.0

TIC Library : C:\Database\NIST20.L
TIC Integration Parameters: LSCINT.P

No Library Search Compounds Detected

Data Path : Z:\voasrv\HPCHEM1\MSVOA_U\Data\VU011524\
Data File : VU057526.D
Acq On : 15 Jan 2024 13:48
Operator : MD/SY
Sample : P1120-15
Misc : 25.0mL/MSVOA_U/WATER
ALS Vial : 12 Sample Multiplier: 1

Instrument :
MSVOA_U
ClientSampleId :
BGWJ1

Quant Method : Z:\voasrv\HPCHEM1\MSVOA_U\Method\SFAMUTR011124WMA.M
Quant Title : TRACE VOA SFAM1.0

TIC Library : C:\Database\NIST20.L
TIC Integration Parameters: LSCINT.P

TIC Top Hit name	RT	EstConc	Units	Response	--Internal Standard--		
					#	RT	Resp Conc
