

Data Path : Z:\voasrv\HPCHEM1\MSVOA_U\Data\VU011725\
 Data File : VU062871.D
 Acq On : 17 Jan 2025 15:02
 Operator : MD/SY
 Sample : Q1071-04DL 20X
 Misc : 25mL/MSVOA_U/WATER
 ALS Vial : 16 Sample Multiplier: 1

Instrument :
 MSVOA_U
 ClientSampleId :

Quant Time: Jan 17 21:59:44 2025
 Quant Method : Z:\voasrv\HPCHEM1\MSVOA_U\Method\SFAMUTR010225WMA.M
 Quant Title : TRACE VOA SFAM1.0
 QLast Update : Fri Jan 17 21:53:56 2025
 Response via : Initial Calibration

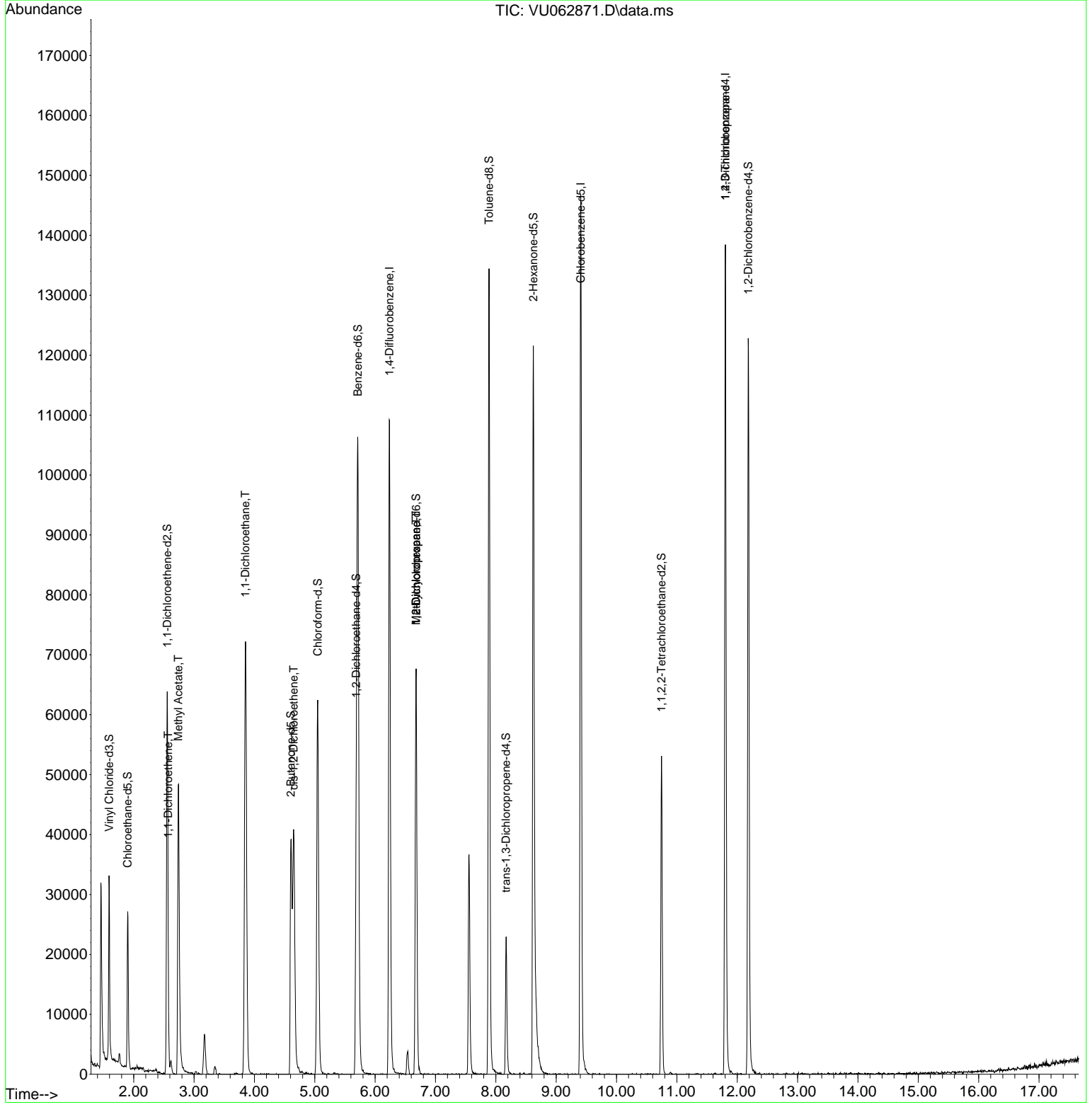
Compound	R.T.	QIon	Response	Conc	Units	Dev(Min)
Internal Standards						
1) 1,4-Difluorobenzene	6.235	114	89788	5.000	ug/L	0.00
28) Chlorobenzene-d5	9.409	117	84003	5.000	ug/L	0.00
58) 1,4-Dichlorobenzene-d4	11.804	152	41174	5.000	ug/L	0.00
System Monitoring Compounds						
4) Vinyl Chloride-d3	1.592	65	20161	4.054	ug/L	0.00
Spiked Amount	5.000	Range 40 - 130	Recovery	=	81.000%	
7) Chloroethane-d5	1.901	69	19433	4.858	ug/L	0.00
Spiked Amount	5.000	Range 65 - 130	Recovery	=	97.200%	
11) 1,1-Dichloroethene-d2	2.557	65	11683	4.535	ug/L	0.00
Spiked Amount	5.000	Range 60 - 125	Recovery	=	90.800%	
20) 2-Butanone-d5	4.605	46	54538	53.661	ug/L	0.00
Spiked Amount	50.000	Range 40 - 130	Recovery	=	107.320%	
24) Chloroform-d	5.049	84	60804	4.970	ug/L	0.00
Spiked Amount	5.000	Range 70 - 125	Recovery	=	99.400%	
26) 1,2-Dichloroethane-d4	5.689	65	36095	5.439	ug/L	0.00
Spiked Amount	5.000	Range 70 - 130	Recovery	=	108.800%	
32) Benzene-d6	5.714	84	101469	4.941	ug/L	0.00
Spiked Amount	5.000	Range 70 - 125	Recovery	=	98.800%	
36) 1,2-Dichloropropane-d6	6.679	67	28053	4.927	ug/L	0.00
Spiked Amount	5.000	Range 60 - 140	Recovery	=	98.600%	
41) Toluene-d8	7.888	98	94830	4.740	ug/L	0.00
Spiked Amount	5.000	Range 70 - 130	Recovery	=	94.800%	
43) trans-1,3-Dichloroprop...	8.171	79	14195	5.002	ug/L	0.00
Spiked Amount	5.000	Range 55 - 130	Recovery	=	100.000%	
46) 2-Hexanone-d5	8.621	63	44933	50.342	ug/L	0.00
Spiked Amount	50.000	Range 45 - 130	Recovery	=	100.680%	
56) 1,1,2,2-Tetrachloroeth...	10.746	84	24995	5.242	ug/L	0.00
Spiked Amount	5.000	Range 65 - 120	Recovery	=	104.800%	
66) 1,2-Dichlorobenzene-d4	12.184	152	35322	5.156	ug/L	0.00
Spiked Amount	5.000	Range 80 - 120	Recovery	=	103.200%	
Target Compounds						
12) 1,1-Dichloroethene	2.570	96	2553	0.458	ug/L #	1
15) Methyl Acetate	2.740	43	14718	8.443	ug/L #	44
19) 1,1-Dichloroethane	3.853	63	81856	7.667	ug/L	97
22) cis-1,2-Dichloroethene	4.653	96	20715	3.185	ug/L	96
35) Methylcyclohexane	6.679	83	7982	0.787	ug/L #	21
37) 1,2-Dichloropropane	6.679	63	3878	0.681	ug/L #	85
61) 1,2,3-Trichloropropane	11.804	75	3944	1.080	ug/L #	61

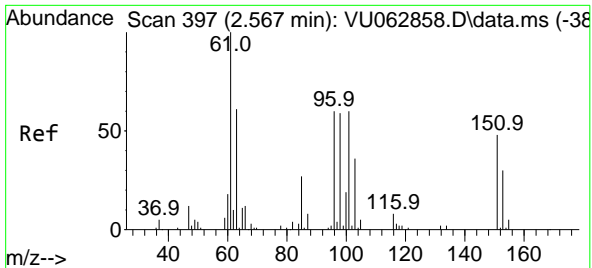
(#) = qualifier out of range (m) = manual integration (+) = signals summed

Data Path : Z:\voasrv\HPCHEM1\MSVOA_U\Data\VU011725\
 Data File : VU062871.D
 Acq On : 17 Jan 2025 15:02
 Operator : MD/SY
 Sample : Q1071-04DL 20X
 Misc : 25mL/MSVOA_U/WATER
 ALS Vial : 16 Sample Multiplier: 1

Instrument :
 MSVOA_U
 ClientSampleId :

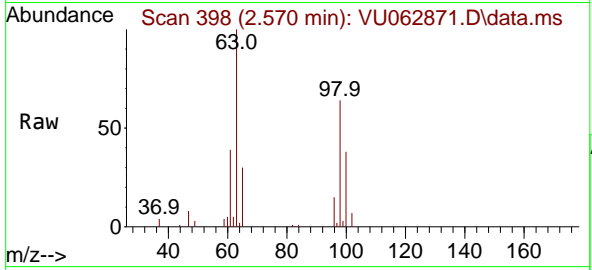
Quant Time: Jan 17 21:59:44 2025
 Quant Method : Z:\voasrv\HPCHEM1\MSVOA_U\Method\SFAMUTR010225WMA.M
 Quant Title : TRACE VOA SFAM1.0
 QLast Update : Fri Jan 17 21:53:56 2025
 Response via : Initial Calibration



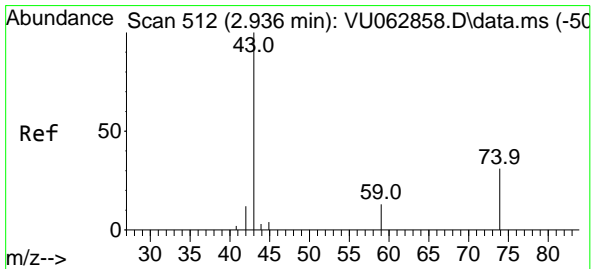
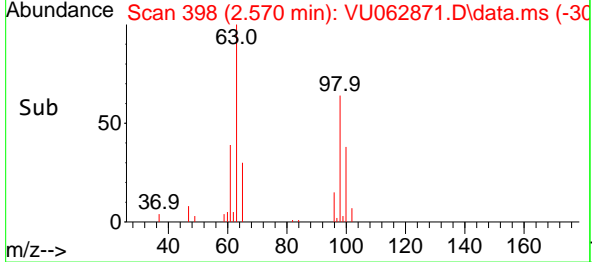
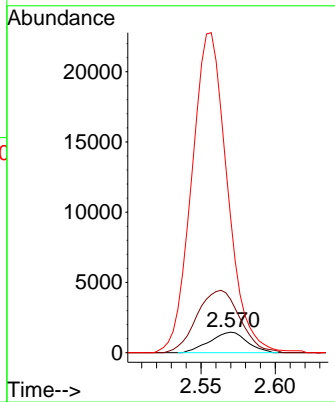


#12
 1,1-Dichloroethene
 Concen: 0.458 ug/L
 RT: 2.570 min Scan# 397
 Delta R.T. 0.003 min
 Lab File: VU062871.D
 Acq: 17 Jan 2025 15:02

Instrument : MSVOA_U
 ClientSampleId :

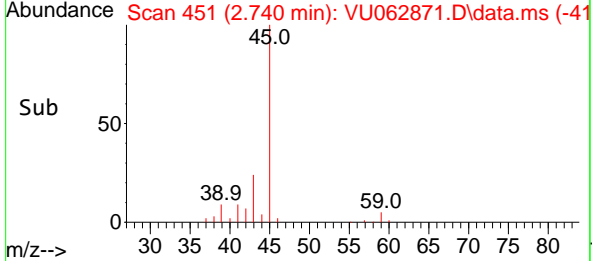
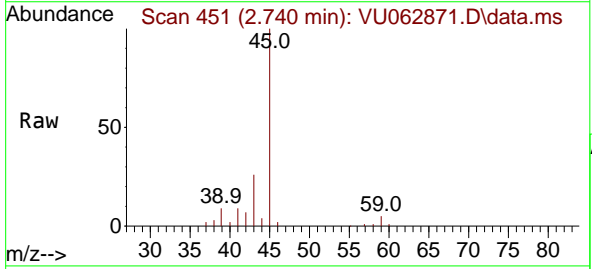
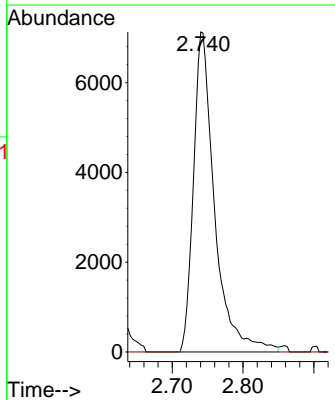


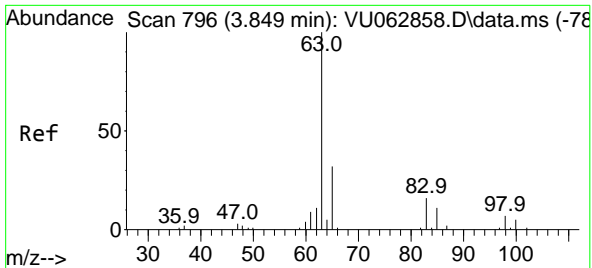
Tgt Ion: 96 Resp: 2553
 Ion Ratio Lower Upper
 96 100
 61 260.2 120.4 223.6#
 63 662.7 82.3 152.9#



#15
 Methyl Acetate
 Concen: 8.443 ug/L
 RT: 2.740 min Scan# 451
 Delta R.T. -0.196 min
 Lab File: VU062871.D
 Acq: 17 Jan 2025 15:02

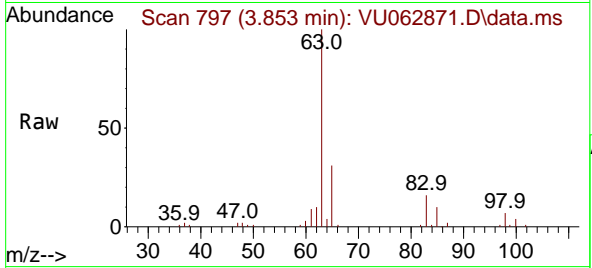
Tgt Ion: 43 Resp: 14718
 Ion Ratio Lower Upper
 43 100
 74 0.0 24.4 36.6#





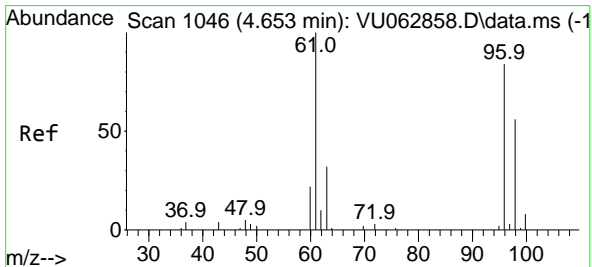
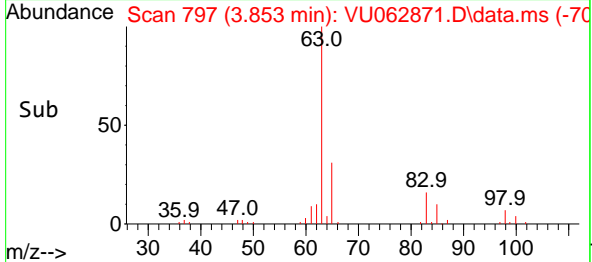
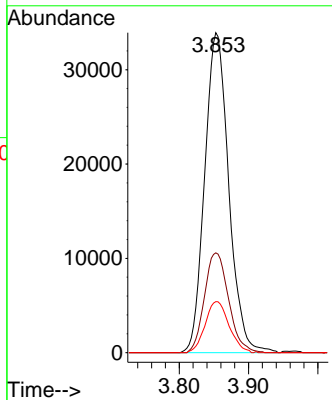
#19
 1,1-Dichloroethane
 Concen: 7.667 ug/L
 RT: 3.853 min Scan# 796
 Delta R.T. 0.003 min
 Lab File: VU062871.D
 Acq: 17 Jan 2025 15:02

Instrument : MSVOA_U
 ClientSampleId :

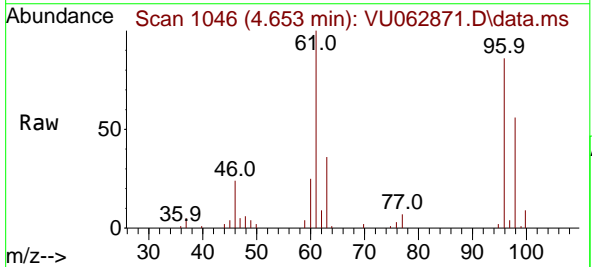


Tgt Ion: 63 Resp: 81856

Ion	Ratio	Lower	Upper
63	100		
65	31.2	20.7	38.5
83	15.9	10.5	19.5

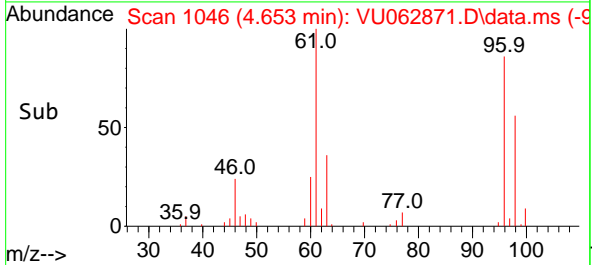
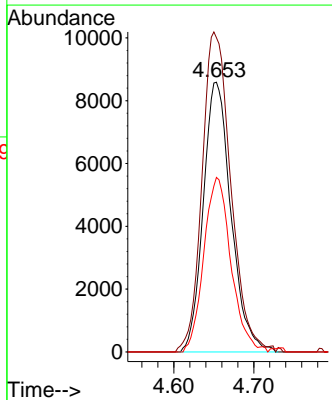


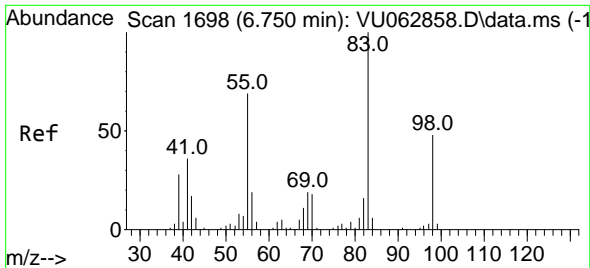
#22
 cis-1,2-Dichloroethene
 Concen: 3.185 ug/L
 RT: 4.653 min Scan# 1046
 Delta R.T. 0.000 min
 Lab File: VU062871.D
 Acq: 17 Jan 2025 15:02



Tgt Ion: 96 Resp: 20715

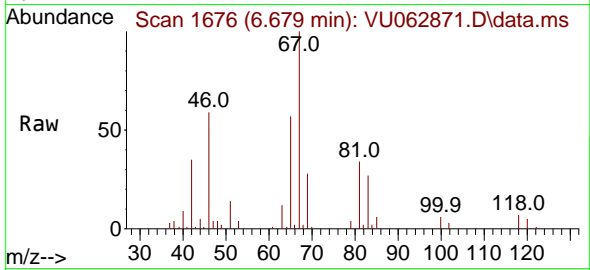
Ion	Ratio	Lower	Upper
96	100		
61	116.5	84.8	157.6
98	64.7	43.1	80.1



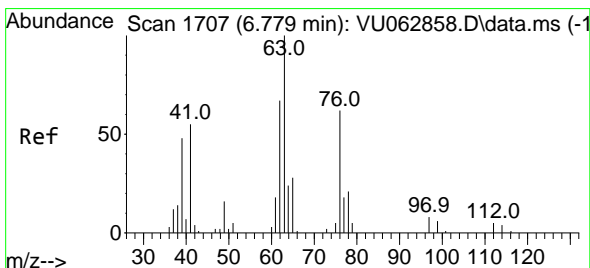
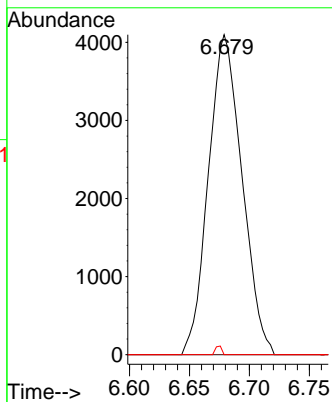
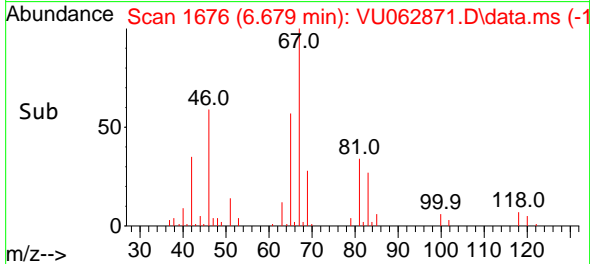


#35
 Methylcyclohexane
 Concen: 0.787 ug/L
 RT: 6.679 min Scan# 1676
 Delta R.T. -0.071 min
 Lab File: VU062871.D
 Acq: 17 Jan 2025 15:02

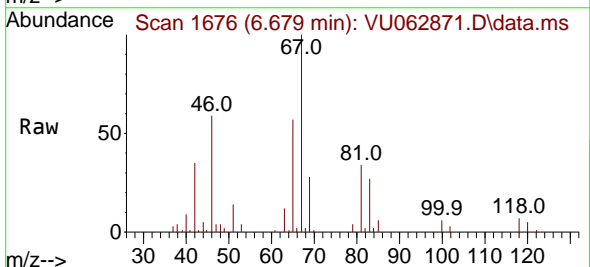
Instrument : MSVOA_U
 ClientSampleId :



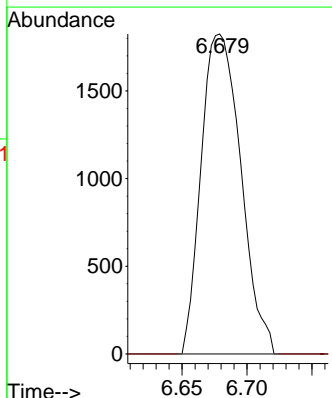
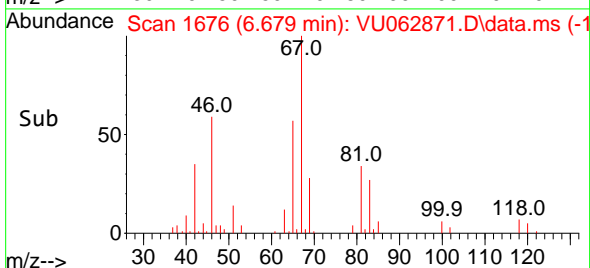
Tgt Ion: 83 Resp: 7982
 Ion Ratio Lower Upper
 83 100
 55 0.0 57.2 85.8#
 98 0.5 36.6 55.0#

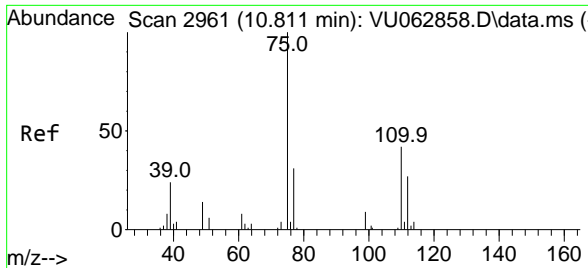


#37
 1,2-Dichloropropane
 Concen: 0.681 ug/L
 RT: 6.679 min Scan# 1676
 Delta R.T. -0.100 min
 Lab File: VU062871.D
 Acq: 17 Jan 2025 15:02



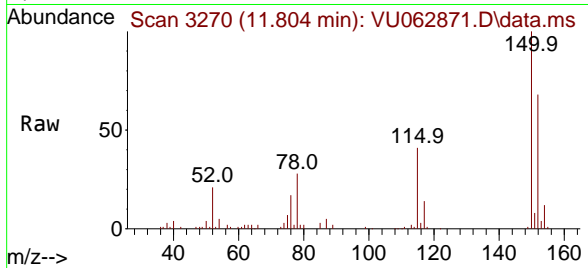
Tgt Ion: 63 Resp: 3878
 Ion Ratio Lower Upper
 63 100
 112 0.0 3.8 5.8#





#61
 1,2,3-Trichloropropane
 Concen: 1.080 ug/L
 RT: 11.804 min Scan# 31
 Delta R.T. 0.994 min
 Lab File: VU062871.D
 Acq: 17 Jan 2025 15:02

Instrument :
 MSVOA_U
 ClientSampleId :



Tgt Ion: 75 Resp: 3944

Ion	Ratio	Lower	Upper
75	100		
110	1.2	33.2	49.8#
77	36.0	25.9	38.9

