

Data Path : Z:\voasrv\HPCHEM1\MSVOA\_U\Data\VU011725\  
 Data File : VU062875.D  
 Acq On : 17 Jan 2025 16:35  
 Operator : MD/SY  
 Sample : Q1071-09DL 5X  
 Misc : 25mL/MSVOA\_U/WATER  
 ALS Vial : 20 Sample Multiplier: 1

Instrument :  
 MSVOA\_U  
 ClientSampleId :  
 GCQ75DL

Quant Time: Jan 17 22:00:42 2025  
 Quant Method : Z:\voasrv\HPCHEM1\MSVOA\_U\Method\SFAMUTR010225WMA.M  
 Quant Title : TRACE VOA SFAM1.0  
 QLast Update : Fri Jan 17 21:53:56 2025  
 Response via : Initial Calibration

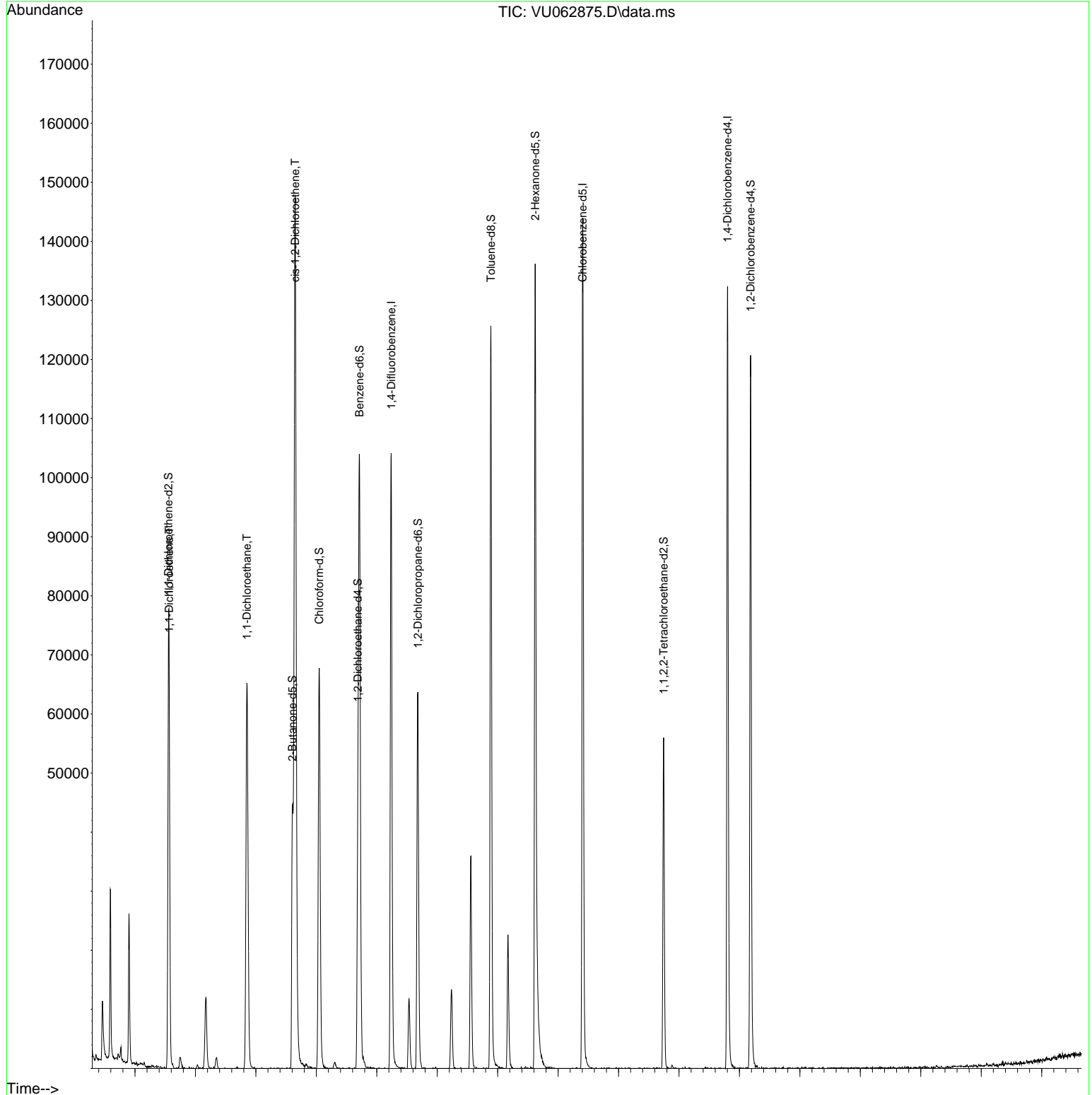
Compound	R.T.	QIon	Response	Conc	Units	Dev(Min)
-----						
Internal Standards						
1) 1,4-Difluorobenzene	6.238	114	86437	5.000	ug/L	0.00
28) Chlorobenzene-d5	9.406	117	82801	5.000	ug/L	0.00
58) 1,4-Dichlorobenzene-d4	11.804	152	38644	5.000	ug/L	0.00
System Monitoring Compounds						
4) Vinyl Chloride-d3	1.592	65	19270	4.025	ug/L	0.00
Spiked Amount	5.000	Range	40 - 130	Recovery	=	80.600%
7) Chloroethane-d5	1.901	69	17611	4.573	ug/L	0.00
Spiked Amount	5.000	Range	65 - 130	Recovery	=	91.400%
11) 1,1-Dichloroethene-d2	2.554	65	10974	4.425	ug/L	0.00
Spiked Amount	5.000	Range	60 - 125	Recovery	=	88.400%
20) 2-Butanone-d5	4.605	46	57984	59.263	ug/L	0.00
Spiked Amount	50.000	Range	40 - 130	Recovery	=	118.520%
24) Chloroform-d	5.049	84	59430	5.046	ug/L	0.00
Spiked Amount	5.000	Range	70 - 125	Recovery	=	101.000%
26) 1,2-Dichloroethane-d4	5.689	65	35134	5.500	ug/L	0.00
Spiked Amount	5.000	Range	70 - 130	Recovery	=	110.000%
32) Benzene-d6	5.714	84	97276	4.806	ug/L	0.00
Spiked Amount	5.000	Range	70 - 125	Recovery	=	96.200%
36) 1,2-Dichloropropane-d6	6.679	67	27340	4.872	ug/L	0.00
Spiked Amount	5.000	Range	60 - 140	Recovery	=	97.400%
41) Toluene-d8	7.888	98	88196	4.473	ug/L	0.00
Spiked Amount	5.000	Range	70 - 130	Recovery	=	89.400%
43) trans-1,3-Dichloroprop...	8.171	79	14490	5.180	ug/L	0.00
Spiked Amount	5.000	Range	55 - 130	Recovery	=	103.600%
46) 2-Hexanone-d5	8.621	63	48244	54.836	ug/L	0.00
Spiked Amount	50.000	Range	45 - 130	Recovery	=	109.680%
56) 1,1,2,2-Tetrachloroeth...	10.746	84	25684	5.465	ug/L	0.00
Spiked Amount	5.000	Range	65 - 120	Recovery	=	109.200%
66) 1,2-Dichlorobenzene-d4	12.184	152	34475	5.362	ug/L	0.00
Spiked Amount	5.000	Range	80 - 120	Recovery	=	107.200%
-----						
Target Compounds						Qvalue
12) 1,1-Dichloroethene	2.567	96	12589	2.346	ug/L	# 71
19) 1,1-Dichloroethane	3.853	63	72542	7.058	ug/L	95
22) cis-1,2-Dichloroethene	4.650	96	78676	12.567	ug/L	97
34) Trichloroethene	6.534	95	4355	0.536	ug/L	89
-----						

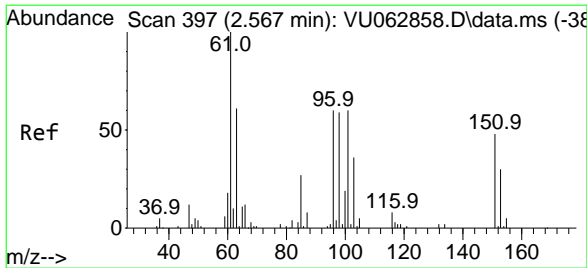
(#) = qualifier out of range (m) = manual integration (+) = signals summed

Data Path : Z:\voasrv\HPCHEM1\MSVOA\_U\Data\VU011725\  
 Data File : VU062875.D  
 Acq On : 17 Jan 2025 16:35  
 Operator : MD/SY  
 Sample : Q1071-09DL 5X  
 Misc : 25mL/MSVOA\_U/WATER  
 ALS Vial : 20 Sample Multiplier: 1

Instrument :  
 MSVOA\_U  
 ClientSampleId :  
 GCQ75DL

Quant Time: Jan 17 22:00:42 2025  
 Quant Method : Z:\voasrv\HPCHEM1\MSVOA\_U\Method\SFAMUTR010225WMA.M  
 Quant Title : TRACE VOA SFAM1.0  
 QLast Update : Fri Jan 17 21:53:56 2025  
 Response via : Initial Calibration

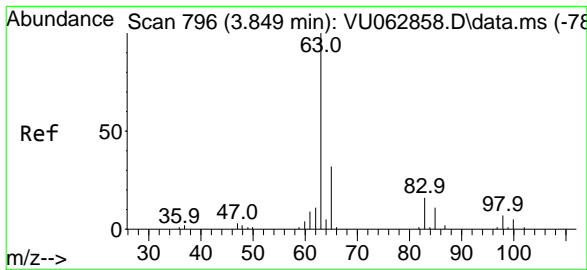
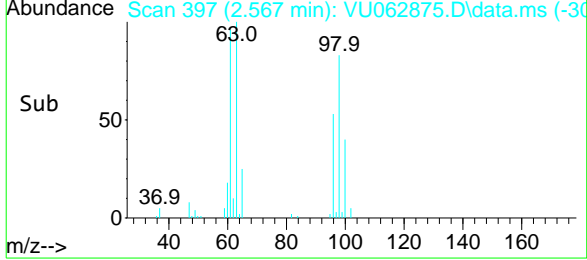
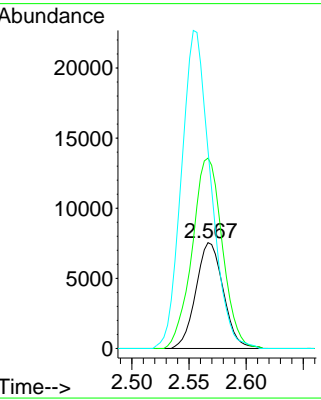
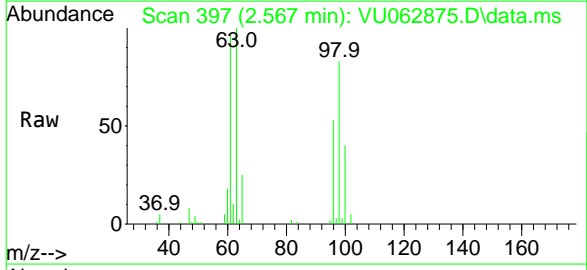




#12  
 1,1-Dichloroethene  
 Concen: 2.346 ug/L  
 RT: 2.567 min Scan# 39  
 Delta R.T. 0.000 min  
 Lab File: VU062875.D  
 Acq: 17 Jan 2025 16:35

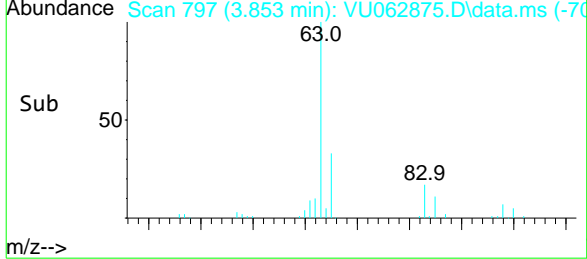
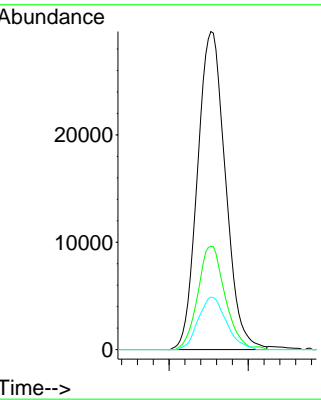
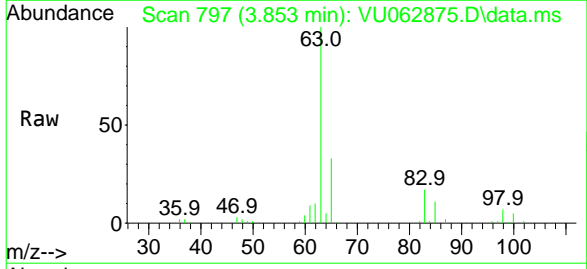
Instrument :  
 MSVOA\_U  
 ClientSampleId :  
 GCQ75DL

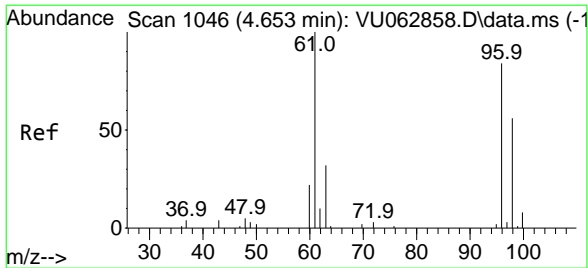
Tgt Ion	Resp	Lower	Upper
96	12589		
96	100		
61	179.9	120.4	223.6
63	187.3	82.3	152.9



#19  
 1,1-Dichloroethane  
 Concen: 7.058 ug/L  
 RT: 3.853 min Scan# 797  
 Delta R.T. 0.003 min  
 Lab File: VU062875.D  
 Acq: 17 Jan 2025 16:35

Tgt Ion	Resp	Lower	Upper
63	72542		
63	100		
65	33.0	20.7	38.5
83	16.5	10.5	19.5

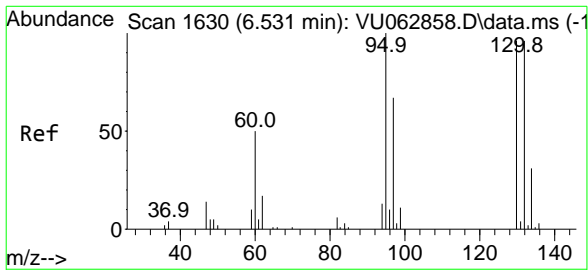
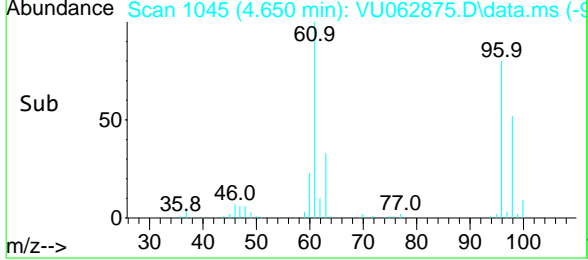
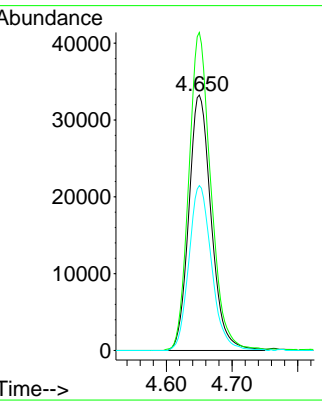
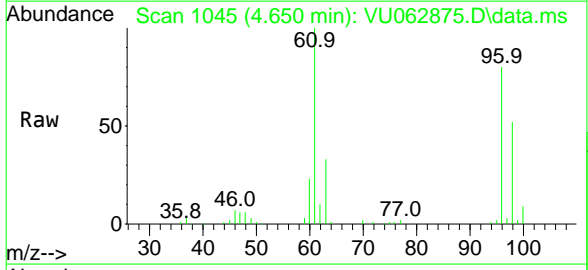




#22  
 cis-1,2-Dichloroethene  
 Concen: 12.567 ug/L  
 RT: 4.650 min Scan# 1045  
 Delta R.T. -0.003 min  
 Lab File: VU062875.D  
 Acq: 17 Jan 2025 16:35

Instrument : MSVOA\_U  
 ClientSampleId : GCQ75DL

Tgt Ion	Resp	Lower	Upper
96	78676		
96	100		
61	124.5	84.8	157.6
98	64.6	43.1	80.1



#34  
 Trichloroethene  
 Concen: 0.536 ug/L  
 RT: 6.534 min Scan# 1631  
 Delta R.T. 0.003 min  
 Lab File: VU062875.D  
 Acq: 17 Jan 2025 16:35

Tgt Ion	Resp	Lower	Upper
95	4355		
95	100		
97	57.8	47.5	88.3
132	83.2	66.9	124.3
130	88.8	68.6	127.4

