

Data Path : Z:\voasrv\HPCHEM1\MSVOA_U\Data\VU011725\
Data File : VU062894.D
Acq On : 18 Jan 2025 00:50
Operator : MD/SY
Sample : Q1086-14
Misc : 25mL/MSVOA_U/WATER
ALS Vial : 40 Sample Multiplier: 1

Instrument :
MSVOA_U
ClientSampleId :
C0AF5

Integration Parameters: rteint.p
Integrator: RTE
Smoothing : ON Filtering: 5
Sampling : 1 Min Area: 3 % of largest Peak
Start Thrs: 0.1 Max Peaks: 100
Stop Thrs : 0 Peak Location: TOP

If leading or trailing edge < 100 prefer < Baseline drop else tangent >
Peak separation: 5

Method : Z:\voasrv\HPCHEM1\MSVOA_U\Method\SFAMUTR010225WMA.M
Title : TRACE VOA SFAM1.0

Signal : TIC: VU062894.D\data.ms

peak #	R.T. min	first scan	max scan	last scan	PK TY	peak height	corr. area	corr. % max.	% of total
1	5.303	1225	1248	1297	rbv	11386247	25808879	100.00%	100.000%

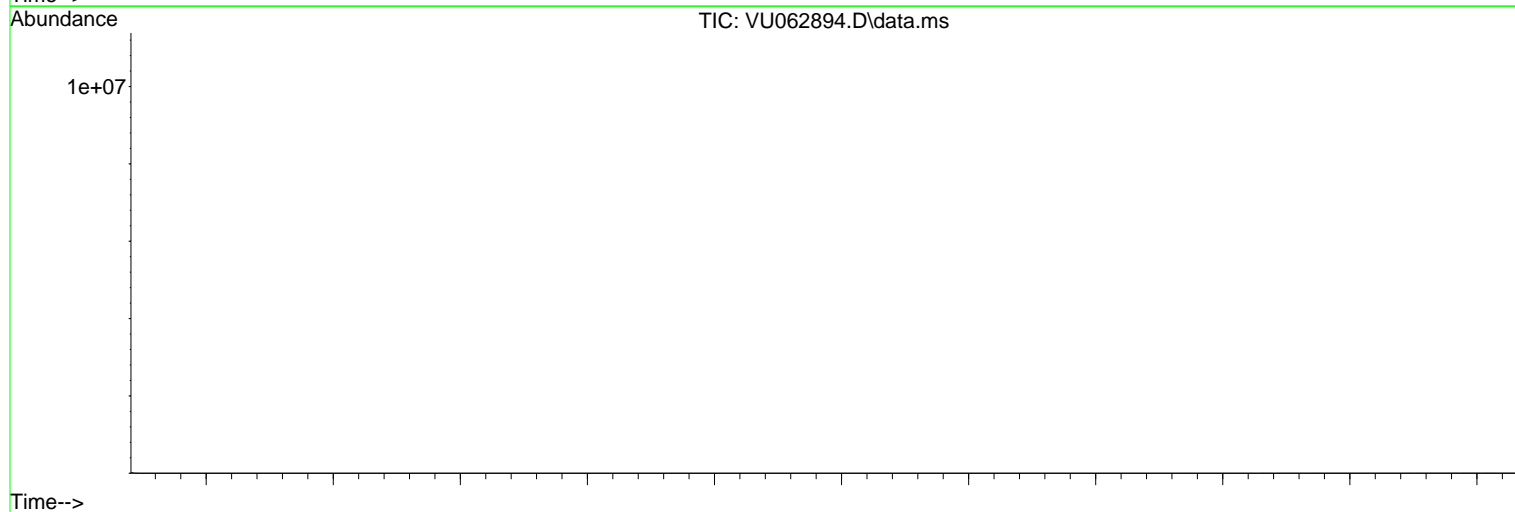
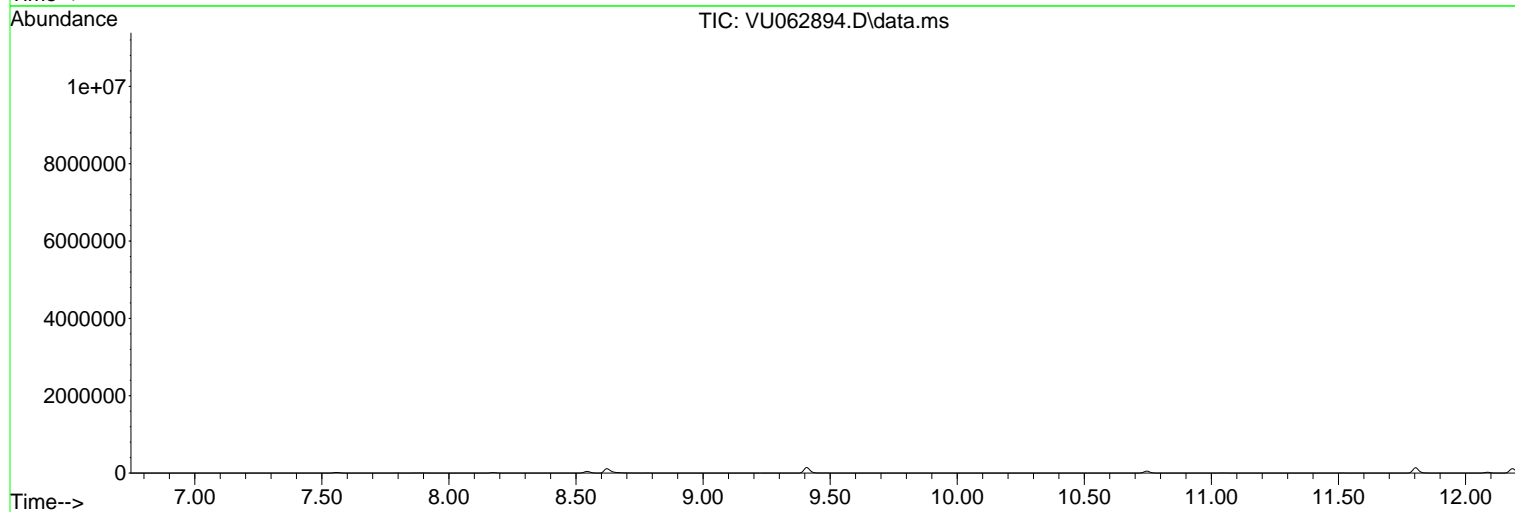
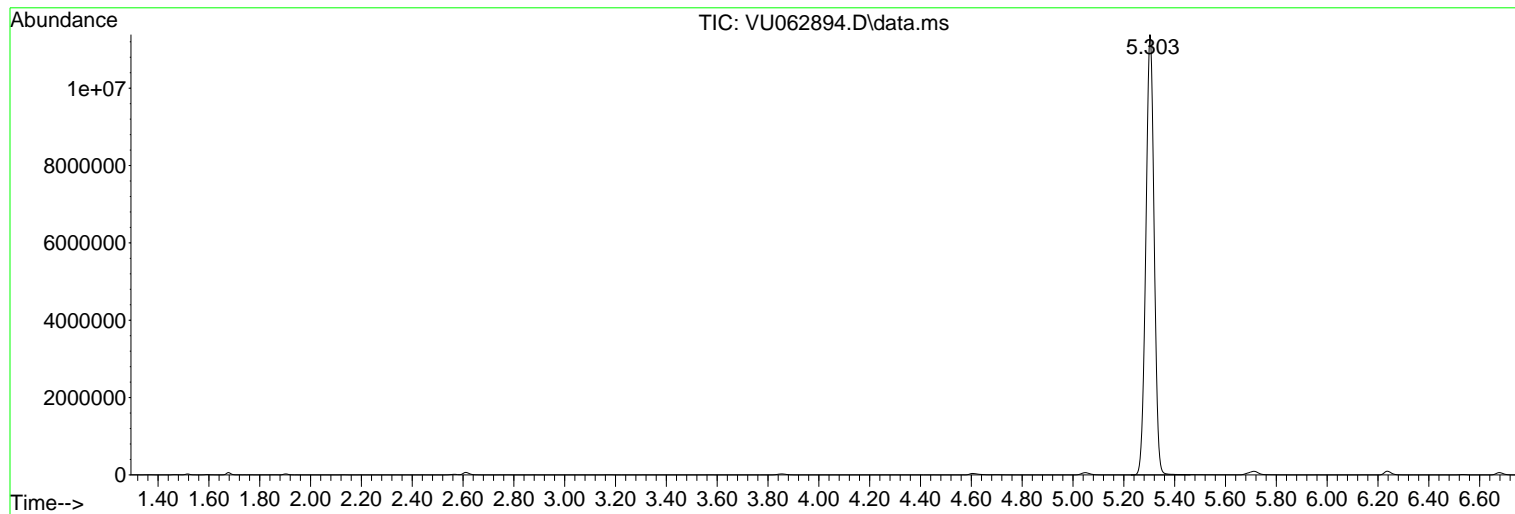
Sum of corrected areas: 25808879

Data Path : Z:\voasrv\HPCHEM1\MSVOA_U\Data\VU011725\
Data File : VU062894.D
Acq On : 18 Jan 2025 00:50
Operator : MD/SY
Sample : Q1086-14
Misc : 25mL/MSVOA_U/WATER
ALS Vial : 40 Sample Multiplier: 1

Instrument :
MSVOA_U
ClientSampleId :
C0AF5

Quant Method : Z:\voasrv\HPCHEM1\MSVOA_U\Method\SFAMUTR010225WMA.M
Quant Title : TRACE VOA SFAM1.0

TIC Library : C:\Database\NIST20.L
TIC Integration Parameters: LSCINT.P



Library Search Compound Report

Data Path : Z:\voasrv\HPCHEM1\MSVOA_U\Data\VU011725\
Data File : VU062894.D
Acq On : 18 Jan 2025 00:50
Operator : MD/SY
Sample : Q1086-14
Misc : 25mL/MSVOA_U/WATER
ALS Vial : 40 Sample Multiplier: 1

Instrument :
MSVOA_U
ClientSampleId :
C0AF5

Quant Method : Z:\voasrv\HPCHEM1\MSVOA_U\Method\SFAMUTR010225WMA.M
Quant Title : TRACE VOA SFAM1.0

TIC Library : C:\Database\NIST20.L
TIC Integration Parameters: LSCINT.P

No Library Search Compounds Detected

Data Path : Z:\voasrv\HPCHEM1\MSVOA_U\Data\VU011725\
Data File : VU062894.D
Acq On : 18 Jan 2025 00:50
Operator : MD/SY
Sample : Q1086-14
Misc : 25mL/MSVOA_U/WATER
ALS Vial : 40 Sample Multiplier: 1

Instrument :
MSVOA_U
ClientSampleId :
C0AF5

Quant Method : Z:\voasrv\HPCHEM1\MSVOA_U\Method\SFAMUTR010225WMA.M
Quant Title : TRACE VOA SFAM1.0

TIC Library : C:\Database\NIST20.L
TIC Integration Parameters: LSCINT.P

TIC Top Hit name	RT	EstConc	Units	Response	#	RT	Resp	Conc
------------------	----	---------	-------	----------	---	----	------	------

-----|