

Data Path : Z:\voasrv\HPCHEM1\MSVOA\_U\Data\VU011822\  
 Data File : VU046785.D  
 Acq On : 18 Jan 2022 16:32  
 Operator : SY/MD  
 Sample : N1179-05  
 Misc : 25.0mL/MSVOA\_U/WATER  
 ALS Vial : 15 Sample Multiplier: 1

Instrument :  
 MSVOA\_U  
 ClientSampleId :  
 COHJ8

Integration Parameters: rteint.p

Integrator: RTE  
 Smoothing : ON Filtering: 5  
 Sampling : 1 Min Area: 3 % of largest Peak  
 Start Thrs: 0.1 Max Peaks: 100  
 Stop Thrs : 0 Peak Location: TOP

If leading or trailing edge < 100 prefer < Baseline drop else tangent >  
 Peak separation: 5

Method : Z:\voasrv\HPCHEM1\MSVOA\_U\Method\SFAMUTR011822WMA.M  
 Title : TRACE VOA SFAM1.0

Signal : TIC: VU046785.D\data.ms

peak #	R.T. min	first scan	max scan	last scan	PK TY	peak height	corr. area	corr. % max.	% of total
1	1.485	39	45	52	rBV	8696	9299	1.43%	0.212%
2	1.601	74	81	97	rVB	65001	76980	11.80%	1.752%
3	1.919	171	180	199	rVB	50599	69848	10.71%	1.590%
4	2.572	368	383	396	rBV	108879	177147	27.17%	4.032%
5	2.668	396	413	424	rBV3	2967	9142	1.40%	0.208%
6	3.189	562	575	594	rVB2	3120	7761	1.19%	0.177%
7	3.842	751	778	779	rBV2	2558	6640	1.02%	0.151%
8	4.652	1012	1030	1072	rBV	61186	262355	40.23%	5.971%
9	5.067	1143	1159	1180	rBV2	91195	201502	30.90%	4.586%
10	5.729	1343	1365	1384	rBV2	189341	488617	74.93%	11.121%
11	6.250	1512	1527	1551	rBV2	138691	263877	40.47%	6.006%
12	6.694	1651	1665	1690	rBV	112702	219741	33.70%	5.001%
13	7.568	1924	1937	1964	rVB	58382	103234	15.83%	2.350%
14	7.899	2026	2040	2056	rBV	238222	405968	62.26%	9.240%
15	7.970	2056	2062	2073	rVB4	4918	8264	1.27%	0.188%
16	8.182	2117	2128	2147	rBV	37467	64411	9.88%	1.466%
17	8.639	2257	2270	2306	rBV	348683	652098	100.00%	14.841%
18	8.790	2307	2317	2329	rBV3	20262	34074	5.23%	0.776%
19	9.417	2500	2512	2529	rBV	212487	352590	54.07%	8.025%
20	9.597	2559	2568	2579	rVB2	5647	8180	1.25%	0.186%
21	10.758	2916	2929	2946	rVB	107341	170923	26.21%	3.890%
22	11.812	3245	3257	3274	rBV	239890	379044	58.13%	8.627%
23	12.063	3323	3335	3350	rBV	20559	34944	5.36%	0.795%
24	12.195	3358	3376	3394	rVB	234136	375021	57.51%	8.535%
25	12.889	3581	3592	3604	rBV4	8146	12138	1.86%	0.276%

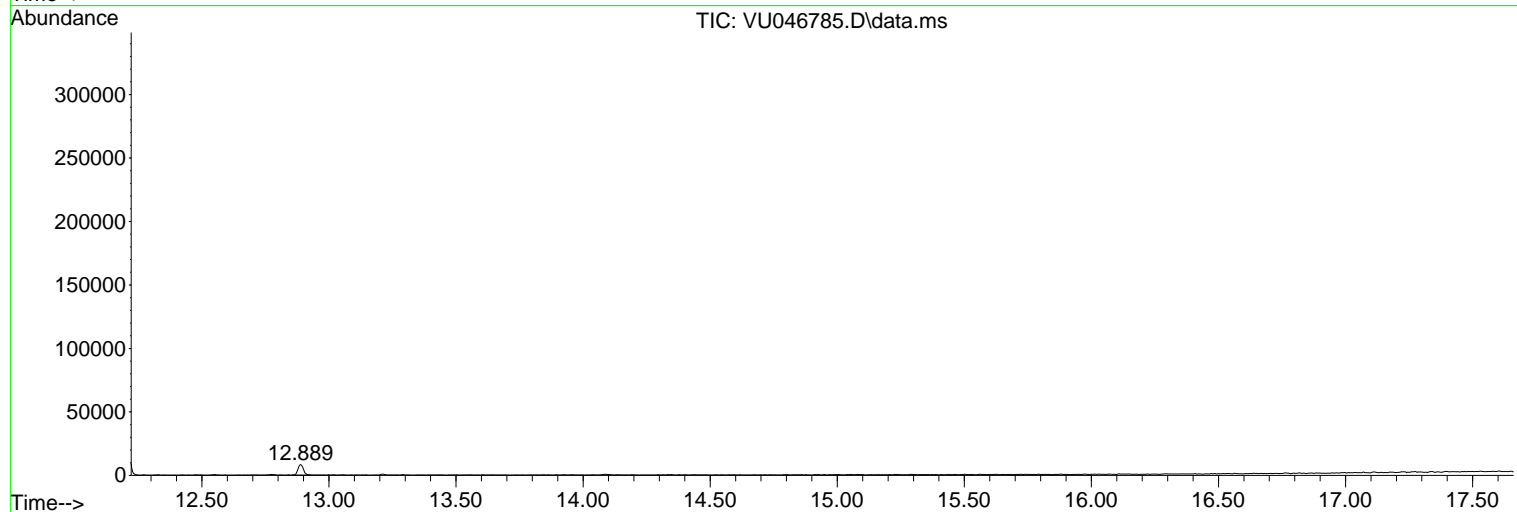
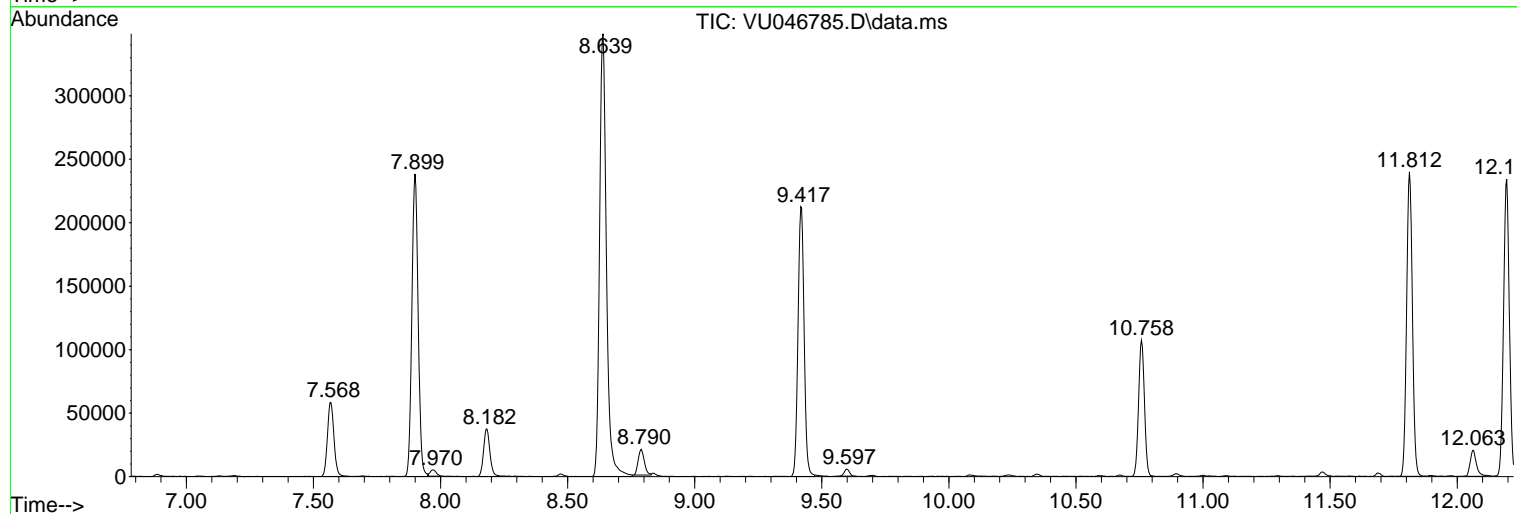
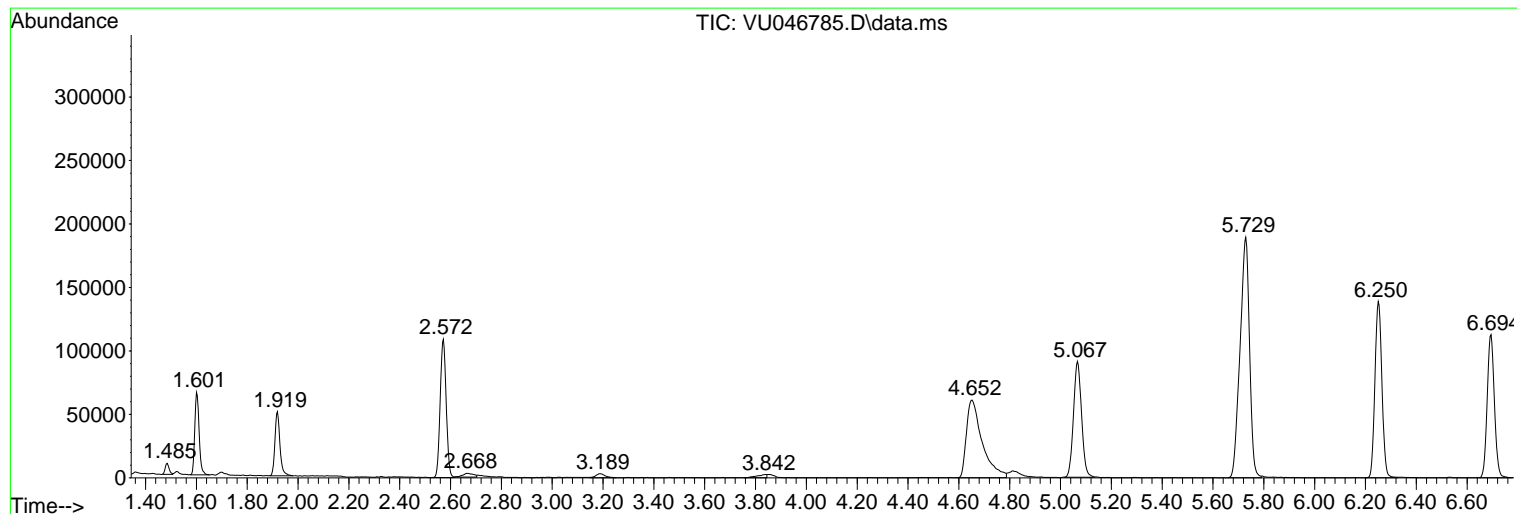
Sum of corrected areas: 4393798

Data Path : Z:\voasrv\HPCHEM1\MSVOA\_U\Data\VU011822\  
Data File : VU046785.D  
Acq On : 18 Jan 2022 16:32  
Operator : SY/MD  
Sample : N1179-05  
Misc : 25.0mL/MSVOA\_U/WATER  
ALS Vial : 15 Sample Multiplier: 1

Instrument :  
MSVOA\_U  
ClientSampleId :  
COHJ8

Quant Method : Z:\voasrv\HPCHEM1\MSVOA\_U\Method\SFAMUTR011822WMA.M  
Quant Title : TRACE VOA SFAM1.0

TIC Library : C:\Database\NIST20.L  
TIC Integration Parameters: LSCINT.P



Library Search Compound Report

Data Path : Z:\voasrv\HPCHEM1\MSVOA\_U\Data\VU011822\  
Data File : VU046785.D  
Acq On : 18 Jan 2022 16:32  
Operator : SY/MD  
Sample : N1179-05  
Misc : 25.0mL/MSVOA\_U/WATER  
ALS Vial : 15 Sample Multiplier: 1

Instrument :  
MSVOA\_U  
ClientSampleId :  
C0HJ8

Quant Method : Z:\voasrv\HPCHEM1\MSVOA\_U\Method\SFAMUTR011822WMA.M  
Quant Title : TRACE VOA SFAM1.0

TIC Library : C:\Database\NIST20.L  
TIC Integration Parameters: LSCINT.P

No Library Search Compounds Detected

\*\*\*\*\*

Data Path : Z:\voasrv\HPCHEM1\MSVOA\_U\Data\VU011822\  
Data File : VU046785.D  
Acq On : 18 Jan 2022 16:32  
Operator : SY/MD  
Sample : N1179-05  
Misc : 25.0mL/MSVOA\_U/WATER  
ALS Vial : 15 Sample Multiplier: 1

Instrument :  
MSVOA\_U  
ClientSampleId :  
C0HJ8

Quant Method : Z:\voasrv\HPCHEM1\MSVOA\_U\Method\SFAMUTR011822WMA.M  
Quant Title : TRACE VOA SFAM1.0

TIC Library : C:\Database\NIST20.L  
TIC Integration Parameters: LSCINT.P

TIC Top Hit name	RT	EstConc	Units	Response	--Internal Standard--			
					#	RT	Resp	Conc

---