

Data Path : Z:\voasrv\HPCHEM1\MSVOA\_U\Data\VU012021\  
 Data File : VU042123.D  
 Acq On : 20 Jan 2021 22:45  
 Operator : SY/MD  
 Sample : L1180-06  
 Misc : 25.0mL/MSVOA\_U/WATER  
 ALS Vial : 32 Sample Multiplier: 1

Instrument :  
 MSVOA\_U  
 ClientSampled :  
 F1E09

Quant Time: Jan 21 06:02:28 2021  
 Quant Method : Z:\VOASRV\HPCHEM1\MSVOA\_U\METHOD\SOMUTR012021WMA.M  
 Quant Title : TRACE VOA SOM01.0  
 QLast Update : Thu Jan 21 06:00:33 2021  
 Response via : Initial Calibration

Compound	R.T.	QIon	Response	Conc	Units	Dev(Min)
-----						
Internal Standards						
1) 1,4-Difluorobenzene	6.257	114	111683	5.00	ug/L	0.00
28) Chlorobenzene-d5	9.424	117	103889	5.00	ug/L	0.00
60) 1,4-Dichlorobenzene-d4	11.819	152	55928	5.00	ug/L	0.00
System Monitoring Compounds						
4) Vinyl Chloride-d3	1.594	65	31499	4.37	ug/L	0.00
Spiked Amount	5.000	Range 40 - 130	Recovery	=	87.40%	
7) Chloroethane-d5	1.910	69	25837	4.45	ug/L	0.00
Spiked Amount	5.000	Range 65 - 130	Recovery	=	89.00%	
11) 1,1-Dichloroethene-d2	2.562	63	48295	3.04	ug/L	0.00
Spiked Amount	5.000	Range 60 - 125	Recovery	=	60.80%	
20) 2-Butanone-d5	4.713	46	99922	38.01	ug/L	0.07
Spiked Amount	50.000	Range 40 - 130	Recovery	=	76.02%	
24) Chloroform-d	5.070	84	73028	4.85	ug/L	0.00
Spiked Amount	5.000	Range 70 - 125	Recovery	=	97.00%	
26) 1,2-Dichloroethane-d4	5.713	65	44262	4.92	ug/L	0.00
Spiked Amount	5.000	Range 70 - 130	Recovery	=	98.40%	
32) Benzene-d6	5.729	84	137002	5.05	ug/L	0.00
Spiked Amount	5.000	Range 70 - 125	Recovery	=	101.00%	
36) 1,2-Dichloropropane-d6	6.697	67	44790	5.12	ug/L	0.00
Spiked Amount	5.000	Range 60 - 140	Recovery	=	102.40%	
41) Toluene-d8	7.903	98	124012	4.84	ug/L	0.00
Spiked Amount	5.000	Range 70 - 130	Recovery	=	96.80%	
43) trans-1,3-Dichloroprop...	8.189	79	20705	4.67	ug/L	0.00
Spiked Amount	5.000	Range 55 - 130	Recovery	=	93.40%	
46) 2-Hexanone-d5	8.652	63	86250	44.66	ug/L	0.00
Spiked Amount	50.000	Range 45 - 130	Recovery	=	89.32%	
57) 1,1,2,2-Tetrachloroeth...	10.765	84	36244	4.83	ug/L	0.00
Spiked Amount	5.000	Range 65 - 120	Recovery	=	96.60%	
64) 1,2-Dichlorobenzene-d4	12.202	152	50016	4.98	ug/L	0.00
Spiked Amount	5.000	Range 80 - 120	Recovery	=	99.60%	
Target Compounds						
						Qvalue
3) Chloromethane	1.514	50	1029	0.11	ug/L	98
10) 1,1,2-Trichloro-1,2,2-...	2.565	101	373	0.05	ug/L #	18
12) 1,1-Dichloroethene	2.562	96	564	0.07	ug/L #	1
13) Acetone	2.726	43	3119	1.78	ug/L	76
14) Carbon disulfide	2.787	76	4782	0.19	ug/L #	85
15) Methyl Acetate	2.996	43	1078	0.26	ug/L #	85
27) 1,2-Dichloroethane	5.729	62	888	0.08	ug/L #	75
33) Benzene	5.781	78	1277	0.04	ug/L	100
35) Methylcyclohexane	6.700	83	10817	0.78	ug/L #	16
37) 1,2-Dichloropropane	6.700	63	5190	0.64	ug/L #	87
39) cis-1,3-Dichloropropene	7.578	75	1628	0.12	ug/L #	50
40) 4-Methyl-2-pentanone	7.813	43	8143	1.18	ug/L #	90
42) Toluene	7.974	91	2276	0.07	ug/L	91
44) trans-1,3-Dichloropropene	8.186	75	936	0.08	ug/L #	68
47) Tetrachloroethene	8.559	164	779	0.11	ug/L	78
48) 2-Hexanone	8.704	43	21111	4.41	ug/L #	96
49) Dibromochloromethane	8.559	129	624	0.08	ug/L #	12
59) 1,2,3-Trichloropropane	11.819	75	6446	1.13	ug/L	89
-----						

Data Path : Z:\voasrv\HPCHEM1\MSVOA\_U\Data\VU012021\  
Data File : VU042123.D  
Acq On : 20 Jan 2021 22:45  
Operator : SY/MD  
Sample : L1180-06  
Misc : 25.0mL/MSVOA\_U/WATER  
ALS Vial : 32 Sample Multiplier: 1

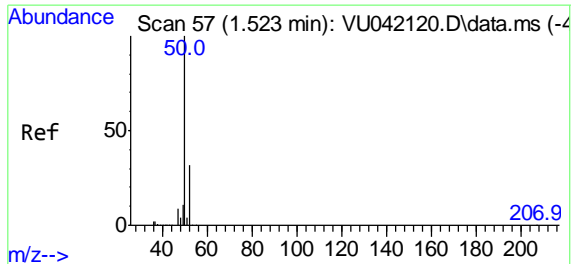
Instrument :  
MSVOA\_U  
ClientSampleId :  
F1E09

Quant Time: Jan 21 06:02:28 2021  
Quant Method : Z:\VOASRV\HPCHEM1\MSVOA\_U\METHOD\SOMUTR012021WMA.M  
Quant Title : TRACE VOA SOM01.0  
QLast Update : Thu Jan 21 06:00:33 2021  
Response via : Initial Calibration

Compound	R.T.	QIon	Response	Conc	Units	Dev(Min)
-----						

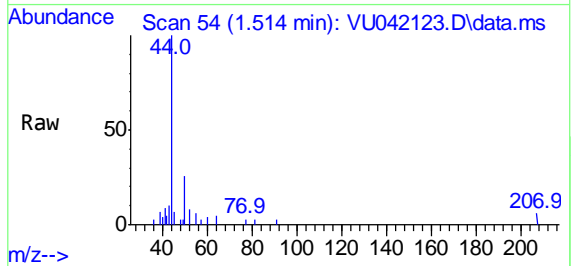
(#) = qualifier out of range (m) = manual integration (+) = signals summed



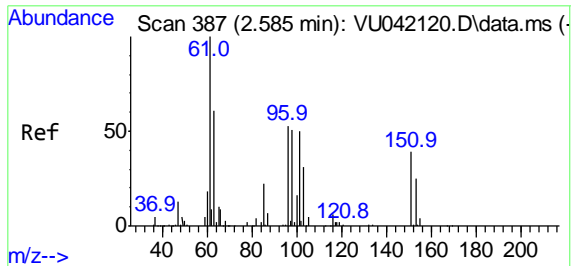
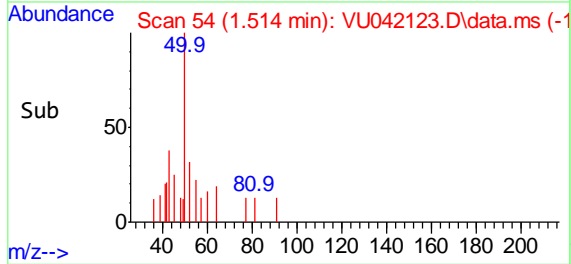
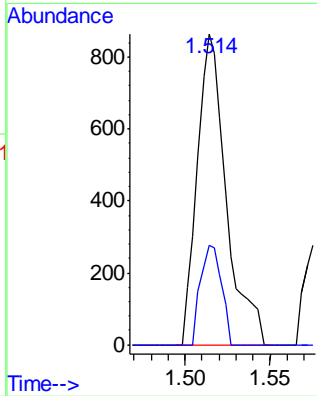


#3  
 Chloromethane  
 Concen: 0.11 ug/L  
 RT: 1.514 min Scan# 54  
 Delta R.T. -0.009 min  
 Lab File: VU042123.D  
 Acq: 20 Jan 2021 22:45

Instrument :  
 MSVOA\_U  
 ClientSampled :  
 F1E09

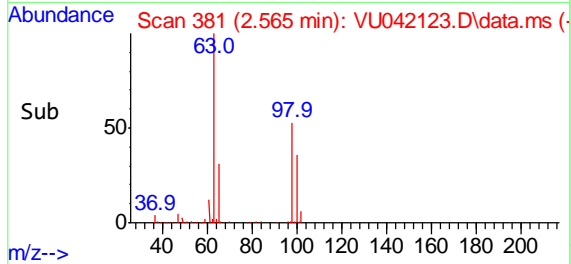
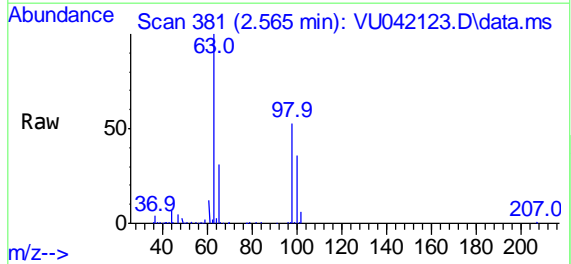
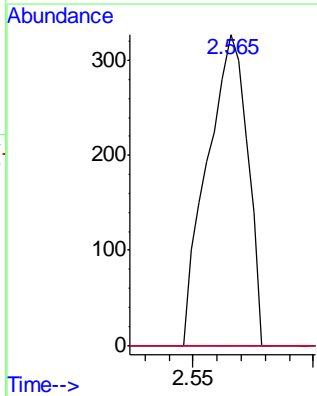


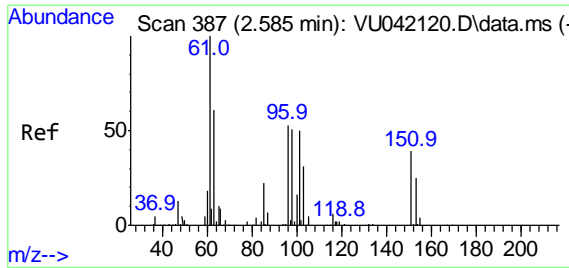
Tgt Ion: 50 Resp: 1029  
 Ion Ratio Lower Upper  
 50 100  
 52 31.9 23.0 42.8



#10  
 1,1,2-Trichloro-1,2,2-trifluoroethane  
 Concen: 0.05 ug/L  
 RT: 2.565 min Scan# 381  
 Delta R.T. -0.019 min  
 Lab File: VU042123.D  
 Acq: 20 Jan 2021 22:45

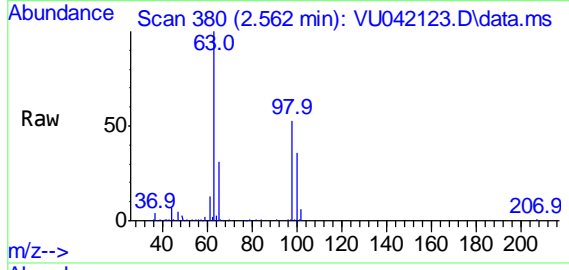
Tgt Ion:101 Resp: 373  
 Ion Ratio Lower Upper  
 101 100  
 85 0.0 34.6 51.8#  
 151 0.0 62.7 94.1#



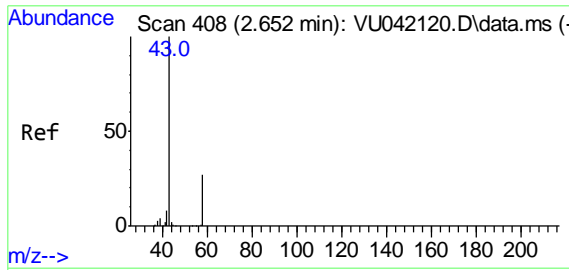
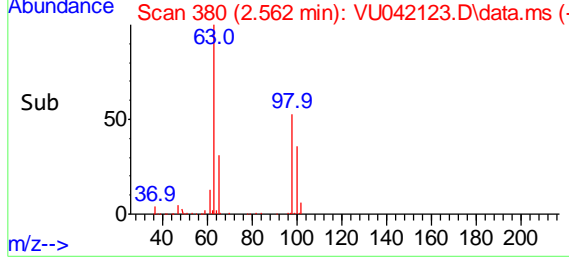
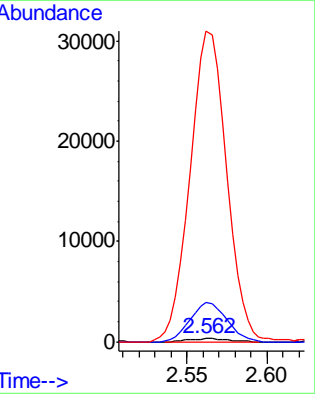


#12  
 1,1-Dichloroethene  
 Concen: 0.07 ug/L  
 RT: 2.562 min Scan# 380  
 Delta R.T. -0.022 min  
 Lab File: VU042123.D  
 Acq: 20 Jan 2021 22:45

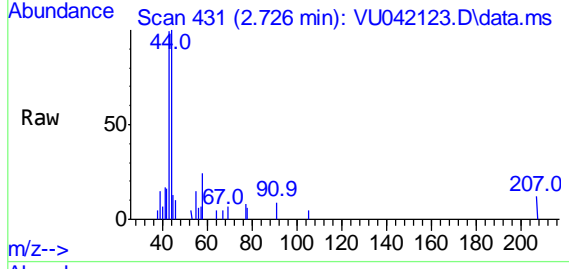
Instrument :  
 MSVOA\_U  
 ClientSampled :  
 F1E09



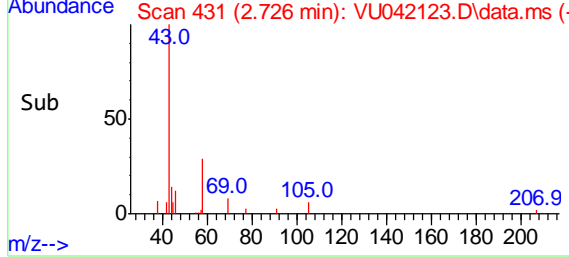
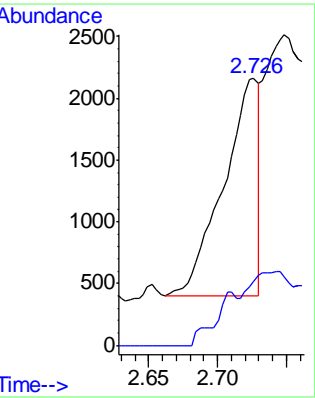
Tgt Ion: 96 Resp: 564  
 Ion Ratio Lower Upper  
 96 100  
 61 1271.8 126.2 234.4#  
 63 10027.2 77.8 144.4#

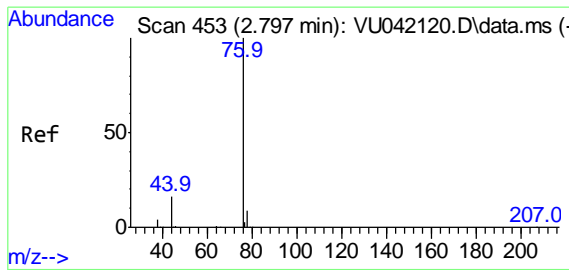


#13  
 Acetone  
 Concen: 1.78 ug/L  
 RT: 2.726 min Scan# 431  
 Delta R.T. 0.074 min  
 Lab File: VU042123.D  
 Acq: 20 Jan 2021 22:45



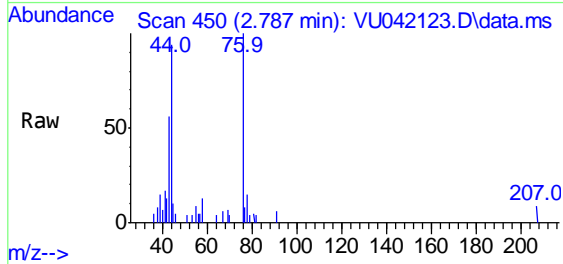
Tgt Ion: 43 Resp: 3119  
 Ion Ratio Lower Upper  
 43 100  
 58 15.2 0.0 55.8



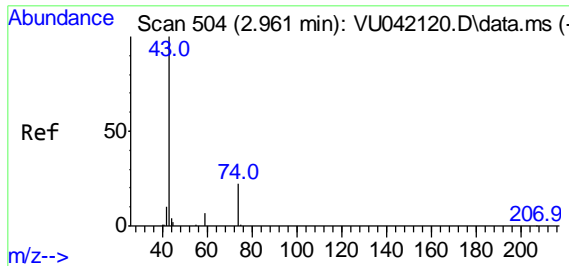
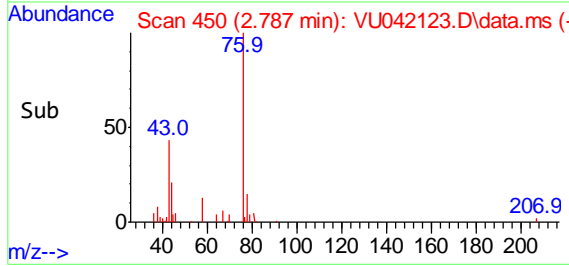
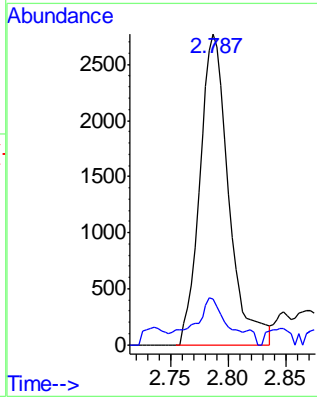


#14  
 Carbon disulfide  
 Concen: 0.19 ug/L  
 RT: 2.787 min Scan# 450  
 Delta R.T. -0.009 min  
 Lab File: VU042123.D  
 Acq: 20 Jan 2021 22:45

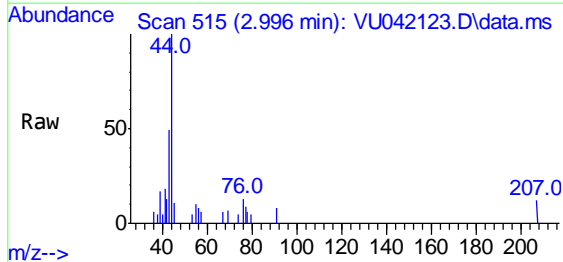
Instrument :  
 MSVOA\_U  
 ClientSampled :  
 F1E09



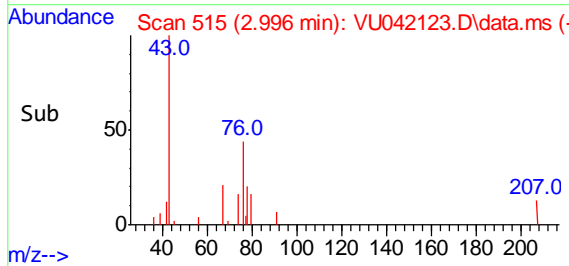
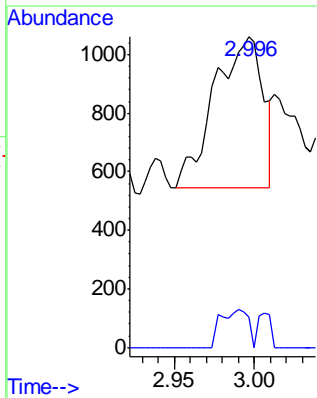
Tgt Ion: 76 Resp: 4782  
 Ion Ratio Lower Upper  
 76 100  
 78 14.7 7.3 10.9#

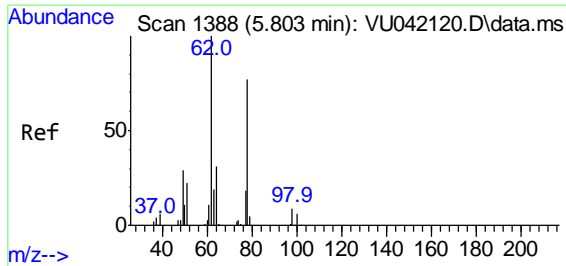


#15  
 Methyl Acetate  
 Concen: 0.26 ug/L  
 RT: 2.996 min Scan# 515  
 Delta R.T. 0.036 min  
 Lab File: VU042123.D  
 Acq: 20 Jan 2021 22:45



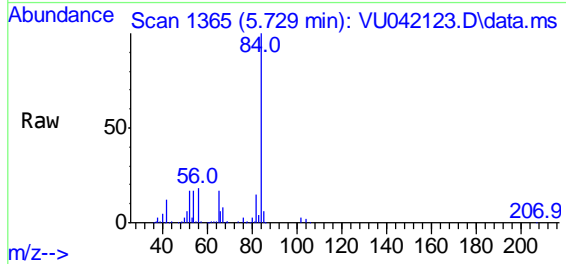
Tgt Ion: 43 Resp: 1078  
 Ion Ratio Lower Upper  
 43 100  
 74 14.0 16.9 25.3#



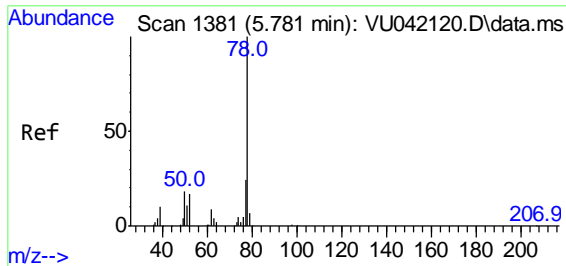
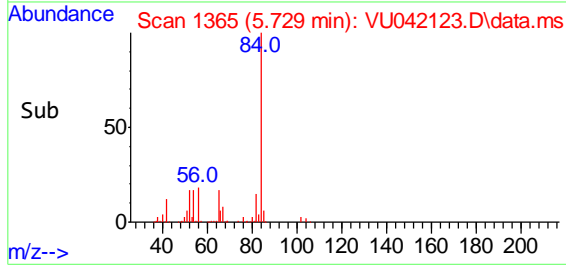
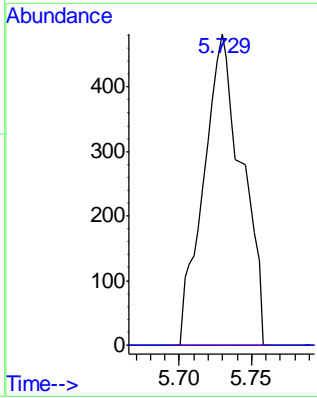


#27  
 1,2-Dichloroethane  
 Concen: 0.08 ug/L  
 RT: 5.729 min Scan# 1365  
 Delta R.T. -0.074 min  
 Lab File: VU042123.D  
 Acq: 20 Jan 2021 22:45

Instrument :  
 MSVOA\_U  
 ClientSampled :  
 F1E09

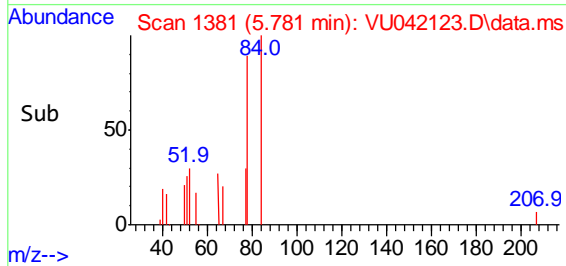
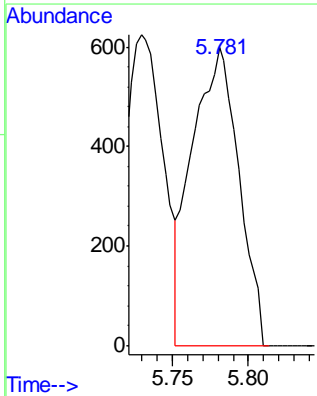
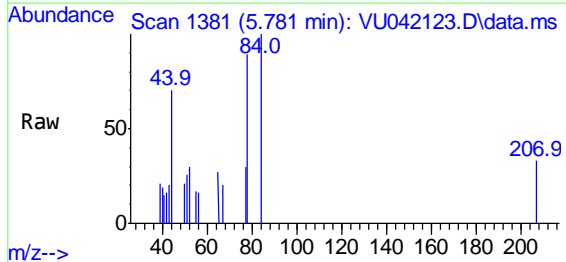


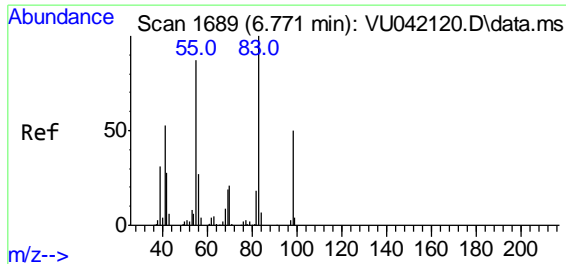
Tgt Ion: 62 Resp: 888  
 Ion Ratio Lower Upper  
 62 100  
 98 0.0 7.3 10.9#



#33  
 Benzene  
 Concen: 0.04 ug/L  
 RT: 5.781 min Scan# 1381  
 Delta R.T. 0.000 min  
 Lab File: VU042123.D  
 Acq: 20 Jan 2021 22:45

Tgt Ion: 78 Resp: 1277



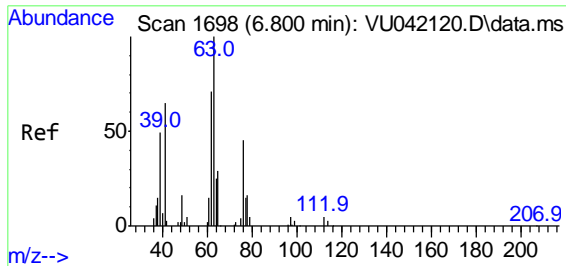
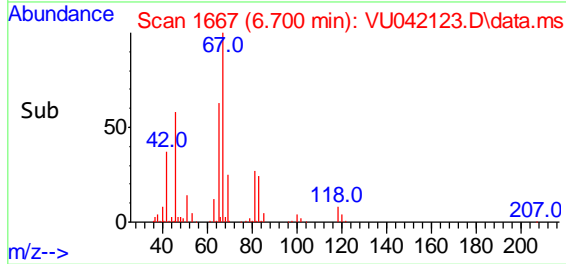
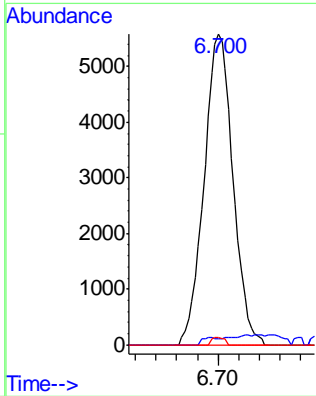
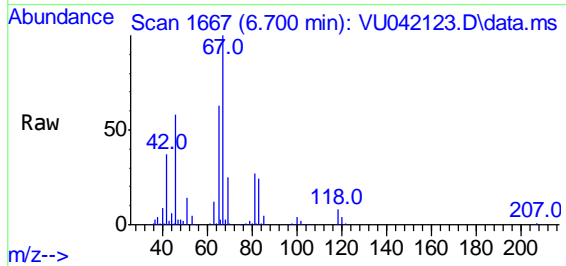


#35  
 Methylcyclohexane  
 Concen: 0.78 ug/L  
 RT: 6.700 min Scan# 1667  
 Delta R.T. -0.070 min  
 Lab File: VU042123.D  
 Acq: 20 Jan 2021 22:45

Instrument :  
 MSVOA\_U  
 ClientSampled :  
 F1E09

Tgt Ion: 83 Resp: 10817

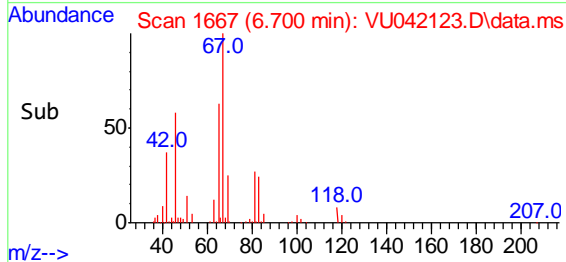
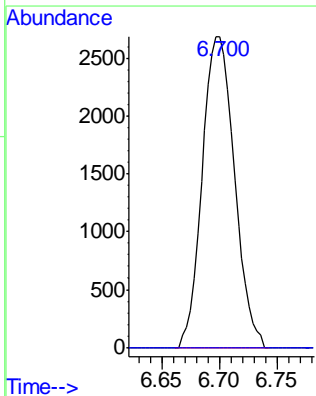
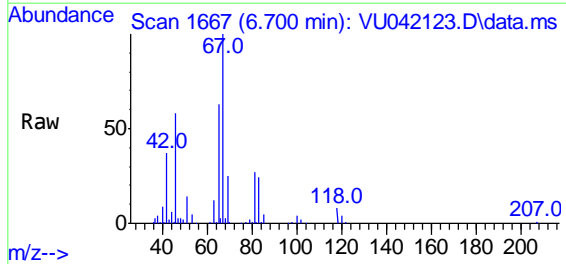
Ion	Ratio	Lower	Upper
83	100		
55	1.2	68.2	102.4#
98	1.0	39.7	59.5#



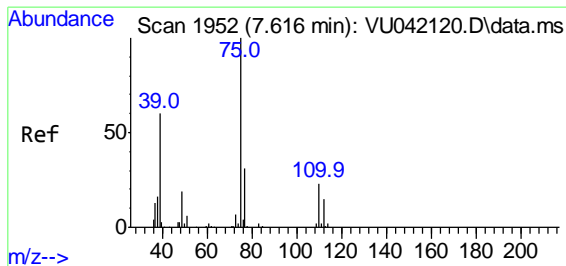
#37  
 1,2-Dichloropropane  
 Concen: 0.64 ug/L  
 RT: 6.700 min Scan# 1667  
 Delta R.T. -0.099 min  
 Lab File: VU042123.D  
 Acq: 20 Jan 2021 22:45

Tgt Ion: 63 Resp: 5190

Ion	Ratio	Lower	Upper
63	100		
112	0.0	3.4	5.0#



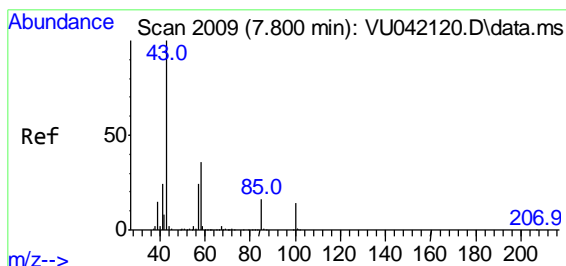
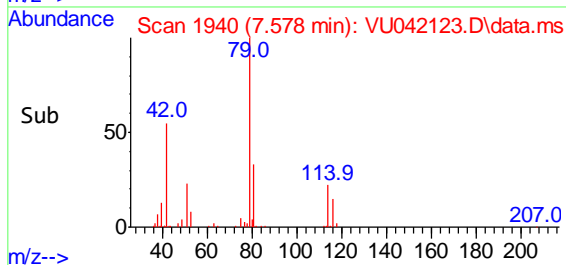
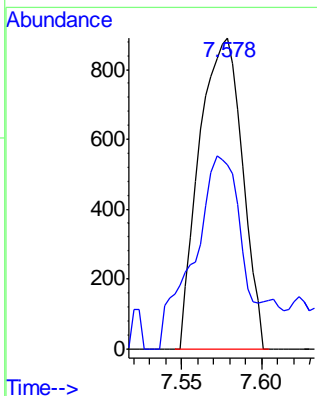
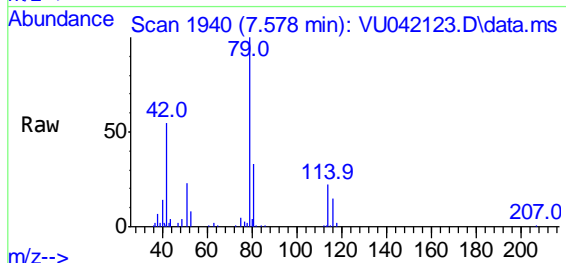




#39  
 cis-1,3-Dichloropropene  
 Concen: 0.12 ug/L  
 RT: 7.578 min Scan# 1940  
 Delta R.T. -0.038 min  
 Lab File: VU042123.D  
 Acq: 20 Jan 2021 22:45

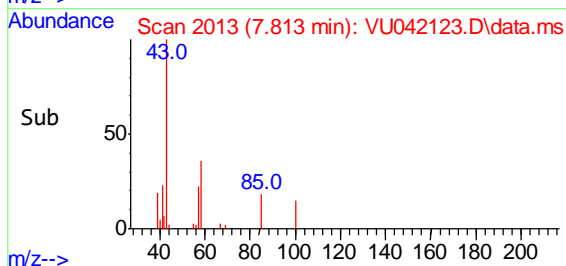
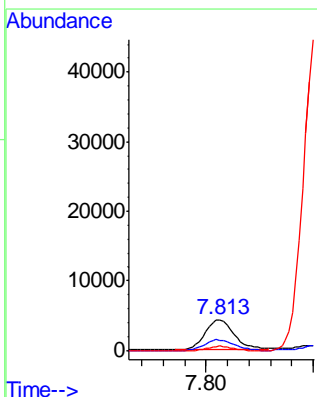
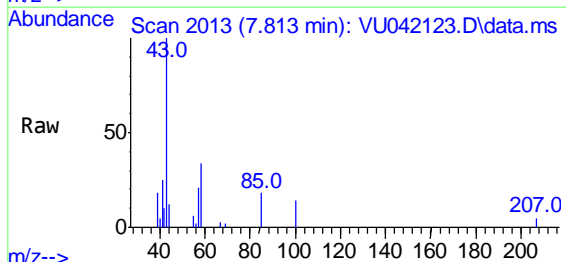
Instrument :  
 MSVOA\_U  
 ClientSampled :  
 F1E09

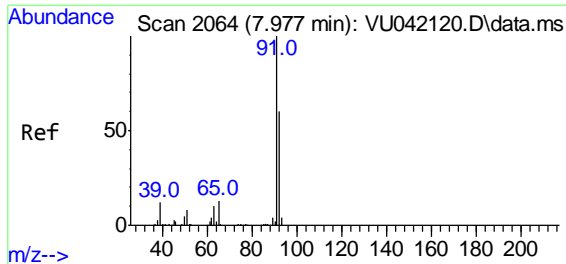
Tgt Ion: 75 Resp: 1628  
 Ion Ratio Lower Upper  
 75 100  
 77 59.2 22.0 40.8#



#40  
 4-Methyl-2-pentanone  
 Concen: 1.18 ug/L  
 RT: 7.813 min Scan# 2013  
 Delta R.T. 0.013 min  
 Lab File: VU042123.D  
 Acq: 20 Jan 2021 22:45

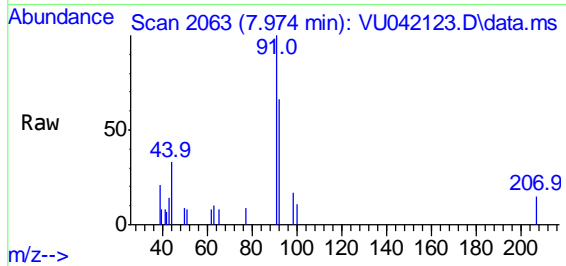
Tgt Ion: 43 Resp: 8143  
 Ion Ratio Lower Upper  
 43 100  
 58 35.7 29.1 43.7  
 100 0.0 11.0 16.4#



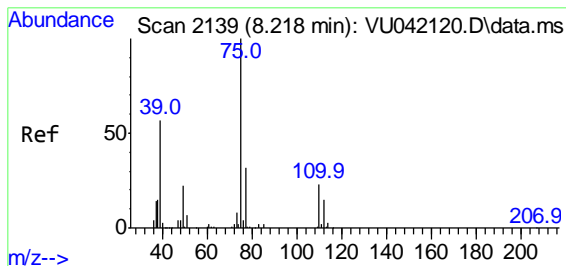
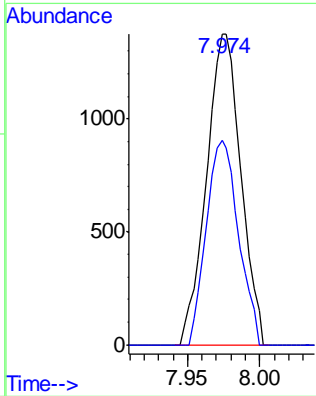
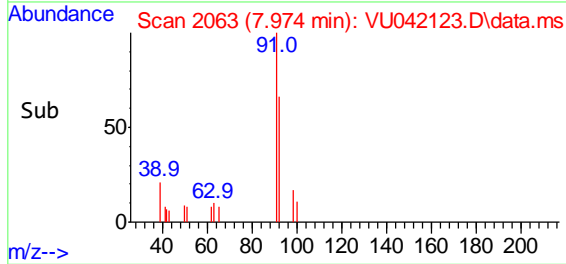


#42  
 Toluene  
 Concen: 0.07 ug/L  
 RT: 7.974 min Scan# 2063  
 Delta R.T. -0.003 min  
 Lab File: VU042123.D  
 Acq: 20 Jan 2021 22:45

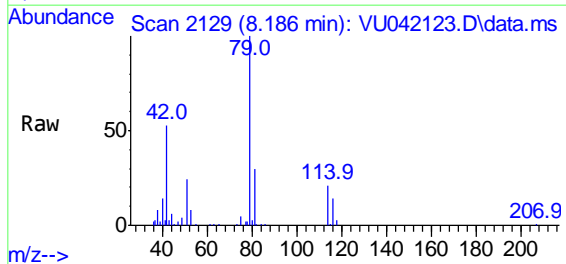
Instrument :  
 MSVOA\_U  
 ClientSampled :  
 F1E09



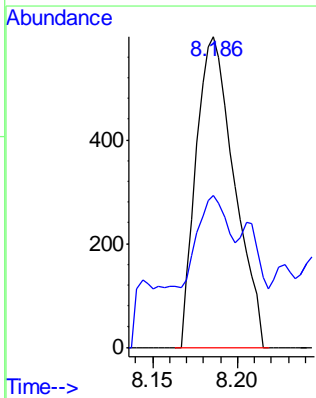
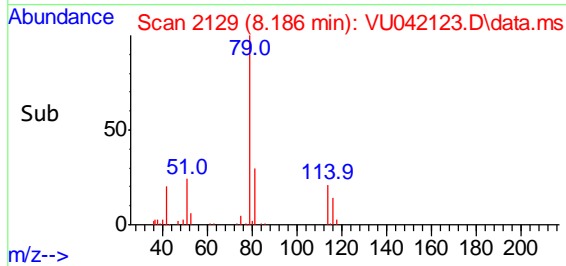
Tgt Ion: 91 Resp: 2276  
 Ion Ratio Lower Upper  
 91 100  
 92 66.0 41.2 76.6

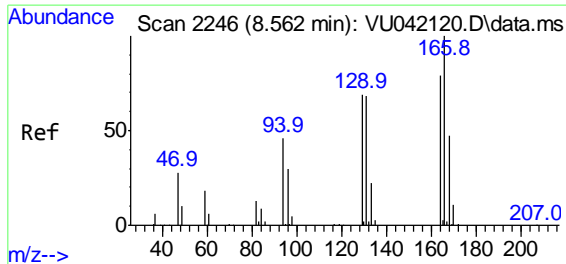


#44  
 trans-1,3-Dichloropropene  
 Concen: 0.08 ug/L  
 RT: 8.186 min Scan# 2129  
 Delta R.T. -0.032 min  
 Lab File: VU042123.D  
 Acq: 20 Jan 2021 22:45



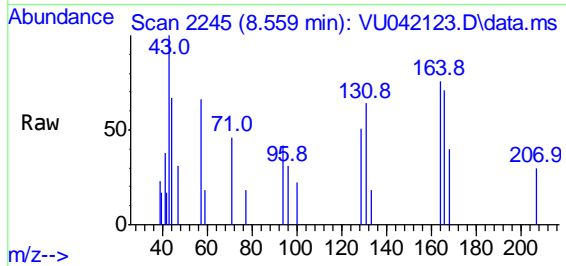
Tgt Ion: 75 Resp: 936  
 Ion Ratio Lower Upper  
 75 100  
 77 48.7 21.8 40.4#





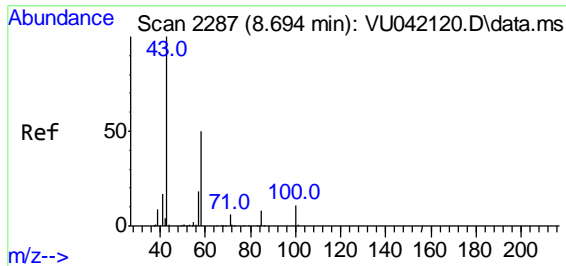
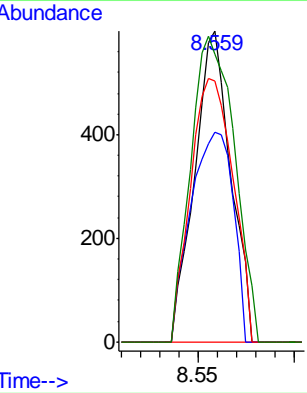
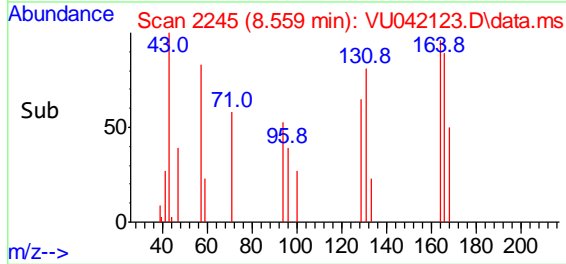
#47  
 Tetrachloroethene  
 Concen: 0.11 ug/L  
 RT: 8.559 min Scan# 2245  
 Delta R.T. -0.003 min  
 Lab File: VU042123.D  
 Acq: 20 Jan 2021 22:45

Instrument :  
 MSVOA\_U  
 ClientSampled :  
 F1E09

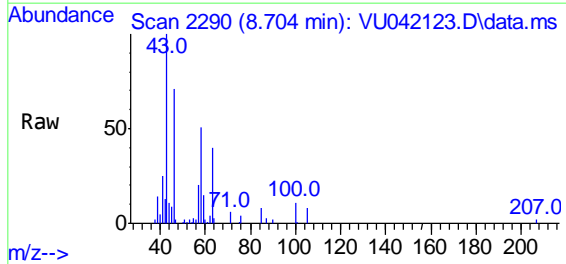


Tgt Ion:164 Resp: 779

Ion	Ratio	Lower	Upper
164	100		
129	67.3	64.3	119.5
131	83.8	62.2	115.6
166	92.5	88.6	164.6

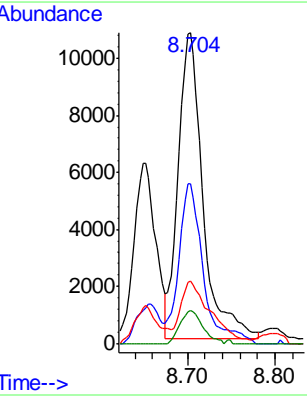
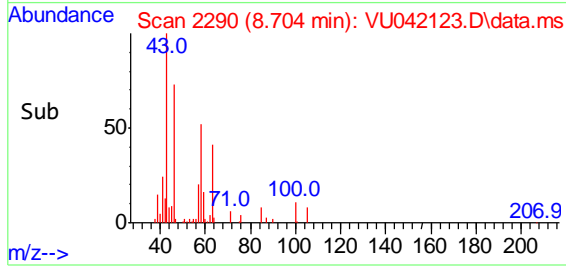


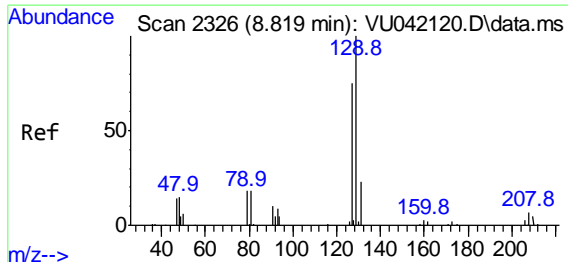
#48  
 2-Hexanone  
 Concen: 4.41 ug/L  
 RT: 8.704 min Scan# 2290  
 Delta R.T. 0.010 min  
 Lab File: VU042123.D  
 Acq: 20 Jan 2021 22:45



Tgt Ion: 43 Resp: 21111

Ion	Ratio	Lower	Upper
43	100		
58	51.1	40.6	61.0
57	25.0	14.9	22.3#
100	9.8	8.6	12.8

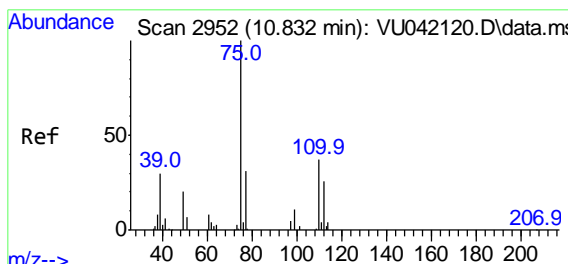
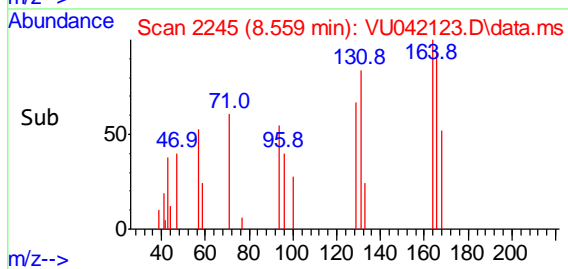
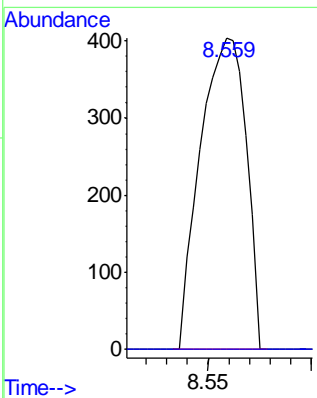
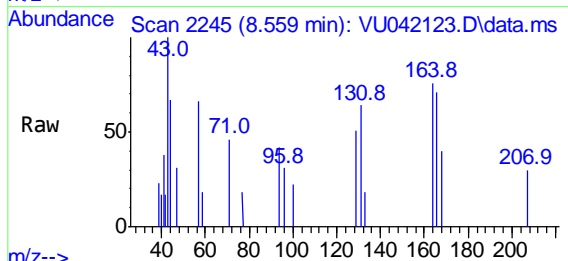




#49  
 Dibromochloromethane  
 Concen: 0.08 ug/L  
 RT: 8.559 min Scan# 2245  
 Delta R.T. -0.260 min  
 Lab File: VU042123.D  
 Acq: 20 Jan 2021 22:45

Instrument :  
 MSVOA\_U  
 ClientSampled :  
 F1E09

Tgt Ion:129 Resp: 624  
 Ion Ratio Lower Upper  
 129 100  
 127 0.0 52.3 97.1#



#59  
 1,2,3-Trichloropropane  
 Concen: 1.13 ug/L  
 RT: 11.819 min Scan# 3259  
 Delta R.T. 0.987 min  
 Lab File: VU042123.D  
 Acq: 20 Jan 2021 22:45

Tgt Ion: 75 Resp: 6446  
 Ion Ratio Lower Upper  
 75 100  
 77 38.6 26.0 39.0

