

Data Path : Z:\voasrv\HPCHEM1\MSVOA\_U\Data\VU012025\  
 Data File : VU062924.D  
 Acq On : 20 Jan 2025 17:08  
 Operator : MD/SY  
 Sample : Q1086-15DL 400X  
 Misc : 25mL/MSVOA\_U/WATER  
 ALS Vial : 20 Sample Multiplier: 1

Instrument :  
 MSVOA\_U  
 ClientSampleId :  
 C0AF6DL

Quant Time: Jan 21 02:43:26 2025  
 Quant Method : Z:\voasrv\HPCHEM1\MSVOA\_U\Method\SFAMUTR010225WMA.M  
 Quant Title : TRACE VOA SFAM1.0  
 QLast Update : Tue Jan 21 02:39:03 2025  
 Response via : Initial Calibration

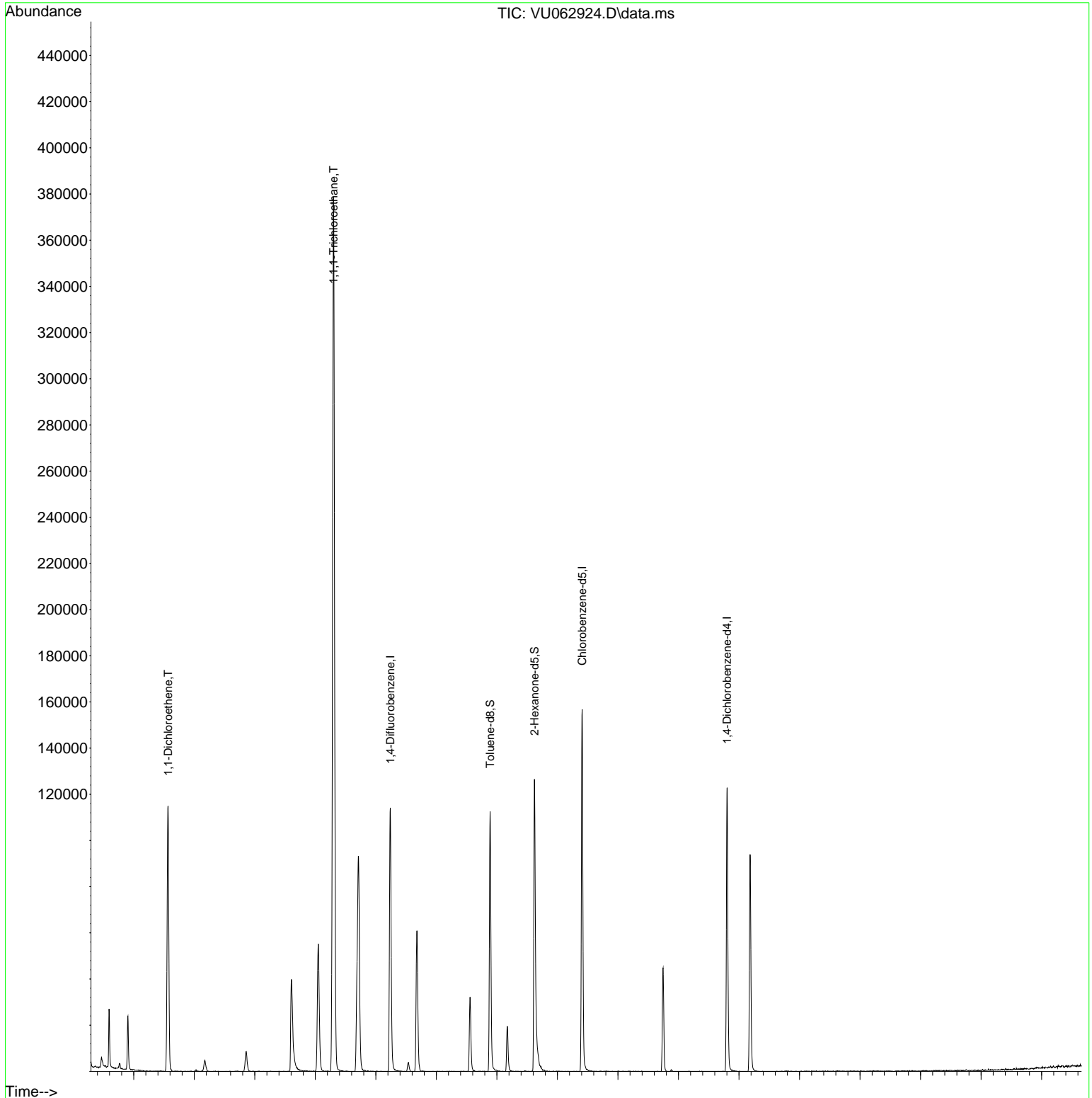
Compound	R.T.	QIon	Response	Conc	Units	Dev(Min)
-----						
Internal Standards						
1) 1,4-Difluorobenzene	6.238	114	92577	5.000	ug/L	0.00
28) Chlorobenzene-d5	9.409	117	87739	5.000	ug/L	0.00
58) 1,4-Dichlorobenzene-d4	11.804	152	36418	5.000	ug/L	0.00
System Monitoring Compounds						
4) Vinyl Chloride-d3	1.592	65	17141	3.343	ug/L	0.00
Spiked Amount	5.000	Range 40 - 130	Recovery	=	66.800%	
7) Chloroethane-d5	1.904	69	16434	3.984	ug/L	0.00
Spiked Amount	5.000	Range 65 - 130	Recovery	=	79.600%	
11) 1,1-Dichloroethene-d2	2.557	65	9170	3.452	ug/L	0.00
Spiked Amount	5.000	Range 60 - 125	Recovery	=	69.000%	
20) 2-Butanone-d5	4.605	46	55528	52.989	ug/L	0.00
Spiked Amount	50.000	Range 40 - 130	Recovery	=	105.980%	
24) Chloroform-d	5.049	84	54041	4.284	ug/L	0.00
Spiked Amount	5.000	Range 70 - 125	Recovery	=	85.600%	
26) 1,2-Dichloroethane-d4	5.689	65	31683	4.630	ug/L	0.00
Spiked Amount	5.000	Range 70 - 130	Recovery	=	92.600%	
32) Benzene-d6	5.714	84	85888	4.005	ug/L	0.00
Spiked Amount	5.000	Range 70 - 125	Recovery	=	80.000%	
36) 1,2-Dichloropropane-d6	6.679	67	26433	4.445	ug/L	0.00
Spiked Amount	5.000	Range 60 - 140	Recovery	=	89.000%	
41) Toluene-d8	7.888	98	76580	3.665	ug/L	0.00
Spiked Amount	5.000	Range 70 - 130	Recovery	=	73.200%	
43) trans-1,3-Dichloroprop...	8.171	79	12547	4.233	ug/L	0.00
Spiked Amount	5.000	Range 55 - 130	Recovery	=	84.600%	
46) 2-Hexanone-d5	8.621	63	43586	46.753	ug/L	0.00
Spiked Amount	50.000	Range 45 - 130	Recovery	=	93.500%	
56) 1,1,2,2-Tetrachloroeth...	10.746	84	20044	4.025	ug/L	0.00
Spiked Amount	5.000	Range 65 - 120	Recovery	=	80.400%	
66) 1,2-Dichlorobenzene-d4	12.184	152	27108	4.474	ug/L	0.00
Spiked Amount	5.000	Range 80 - 120	Recovery	=	89.400%	
Target Compounds						
12) 1,1-Dichloroethene	2.570	96	30852	5.368	ug/L	90
19) 1,1-Dichloroethane	3.856	63	10441	0.948	ug/L	94
29) 1,1,1-Trichloroethane	5.303	97	293347	22.042	ug/L	99
-----						

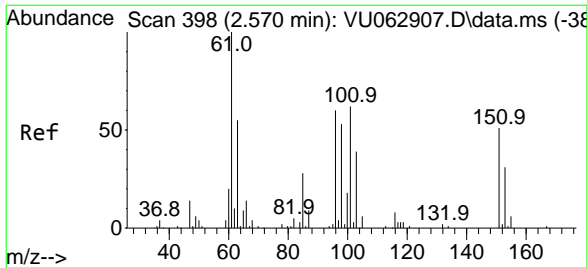
(#) = qualifier out of range (m) = manual integration (+) = signals summed

Data Path : Z:\voasrv\HPCHEM1\MSVOA\_U\Data\VU012025\  
Data File : VU062924.D  
Acq On : 20 Jan 2025 17:08  
Operator : MD/SY  
Sample : Q1086-15DL 400X  
Misc : 25mL/MSVOA\_U/WATER  
ALS Vial : 20 Sample Multiplier: 1

Instrument :  
MSVOA\_U  
ClientSampleId :  
C0AF6DL

Quant Time: Jan 21 02:43:26 2025  
Quant Method : Z:\voasrv\HPCHEM1\MSVOA\_U\Method\SFAMUTR010225WMA.M  
Quant Title : TRACE VOA SFAM1.0  
QLast Update : Tue Jan 21 02:39:03 2025  
Response via : Initial Calibration

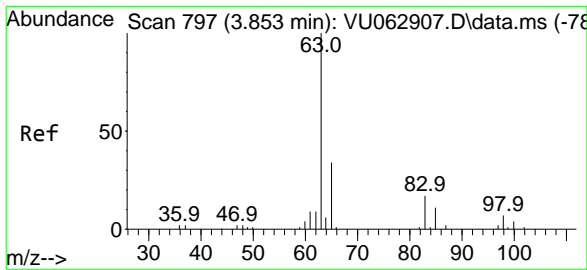
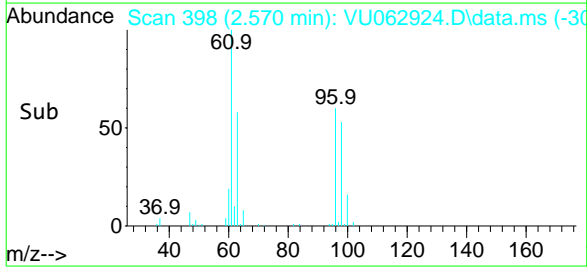
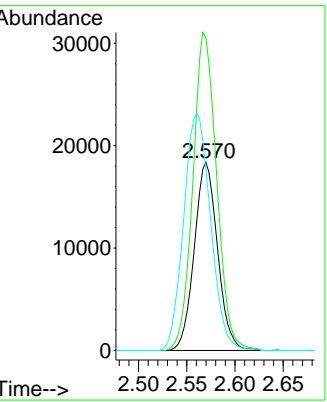
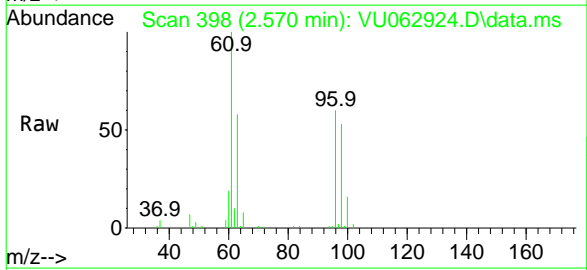




#12  
 1,1-Dichloroethene  
 Concen: 5.368 ug/L  
 RT: 2.570 min Scan# 398  
 Delta R.T. -0.000 min  
 Lab File: VU062924.D  
 Acq: 20 Jan 2025 17:08

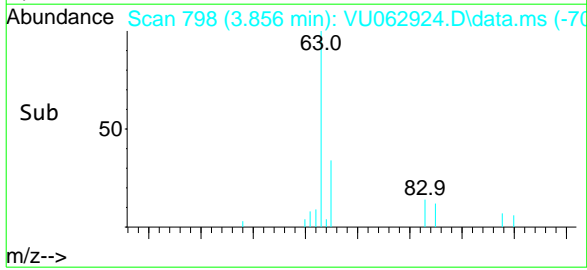
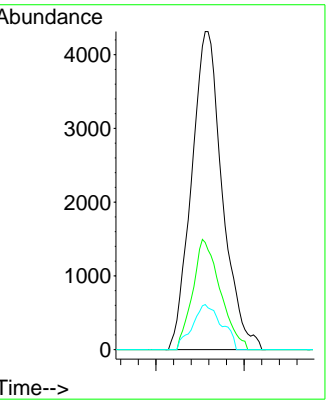
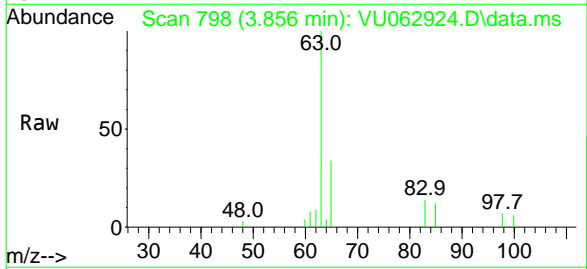
Instrument : MSVOA\_U  
 ClientSampleId : C0AF6DL

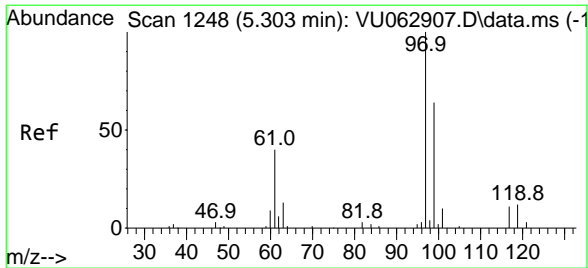
Tgt Ion	Resp	Lower	Upper
96	30852		
96	100		
61	166.1	120.4	223.6
63	96.3	82.3	152.9



#19  
 1,1-Dichloroethane  
 Concen: 0.948 ug/L  
 RT: 3.856 min Scan# 798  
 Delta R.T. 0.003 min  
 Lab File: VU062924.D  
 Acq: 20 Jan 2025 17:08

Tgt Ion	Resp	Lower	Upper
63	10441		
63	100		
65	33.7	20.7	38.5
83	14.2	10.5	19.5





1,1,1-Trichloroethane  
 Concen: 22.042 ug/L  
 RT: 5.303 min Scan# 12  
 Delta R.T. -0.000 min  
 Lab File: VU062924.D  
 Acq: 20 Jan 2025 17:08

Instrument : MSVOA\_U  
 ClientSampleId : C0AF6DL

Tgt Ion: 97 Resp: 293347

Ion	Ratio	Lower	Upper
97	100		
99	64.5	52.4	78.6
61	39.7	32.2	48.4

