

Data Path : Z:\voasrv\HPCHEM1\MSVOA\_U\Data\VU012121\  
 Data File : VU042149.D  
 Acq On : 21 Jan 2021 14:36  
 Operator : SY/MD  
 Sample : M1180-08DL 5X  
 Misc : 25.0mL/MSVOA\_U/WATER  
 ALS Vial : 13 Sample Multiplier: 1

Instrument :  
 MSVOA\_U  
 ClientSampleId :  
 F1E23DL

Integration Parameters: rteint.p  
 Integrator: RTE  
 Smoothing : ON Filtering: 5  
 Sampling : 1 Min Area: 3 % of largest Peak  
 Start Thrs: 0.1 Max Peaks: 100  
 Stop Thrs : 0 Peak Location: TOP

If leading or trailing edge < 100 prefer < Baseline drop else tangent >  
 Peak separation: 5

Method : Z:\VOASRV\HPCHEM1\MSVOA\_U\METHOD\SOMUTR012021WMA.M  
 Title : TRACE VOA SOM01.0

Signal : TIC: VU042149.D\data.ms

peak #	R.T. min	first scan	max scan	last scan	PK TY	peak height	corr. area	corr. % max.	% of total
1	1.600	74	81	91	rVB	49462	52826	8.71%	1.289%
2	1.919	172	180	190	rVB	39576	49405	8.15%	1.205%
3	2.571	371	383	399	rBV	91206	147175	24.27%	3.591%
4	4.674	1011	1037	1071	rBV3	200445	606448	100.00%	14.796%
5	5.073	1145	1161	1179	rBV	80044	174076	28.70%	4.247%
6	5.735	1346	1367	1389	rBV2	154937	404210	66.65%	9.862%
7	6.256	1515	1529	1548	rBV	138583	261767	43.16%	6.386%
8	6.549	1608	1620	1636	rVB2	31996	59383	9.79%	1.449%
9	6.700	1649	1667	1683	rBV	98734	192216	31.70%	4.690%
10	7.575	1926	1939	1954	rBV	58772	103772	17.11%	2.532%
11	7.906	2024	2042	2059	rBV	191941	334949	55.23%	8.172%
12	8.185	2119	2129	2147	rBV2	38128	66104	10.90%	1.613%
13	8.558	2236	2245	2256	rBV2	25664	42932	7.08%	1.047%
14	8.642	2258	2271	2296	rBV	278014	511149	84.29%	12.471%
15	9.423	2501	2514	2531	rBV	190122	314281	51.82%	7.668%
16	10.764	2920	2931	2947	rVB	77839	124746	20.57%	3.043%
17	11.819	3245	3259	3274	rBV	202277	323237	53.30%	7.886%
18	12.070	3327	3337	3349	rBV3	6488	12419	2.05%	0.303%
19	12.201	3366	3378	3394	rVB	190949	306965	50.62%	7.489%
20	12.896	3584	3594	3605	rVB7	6520	10716	1.77%	0.261%

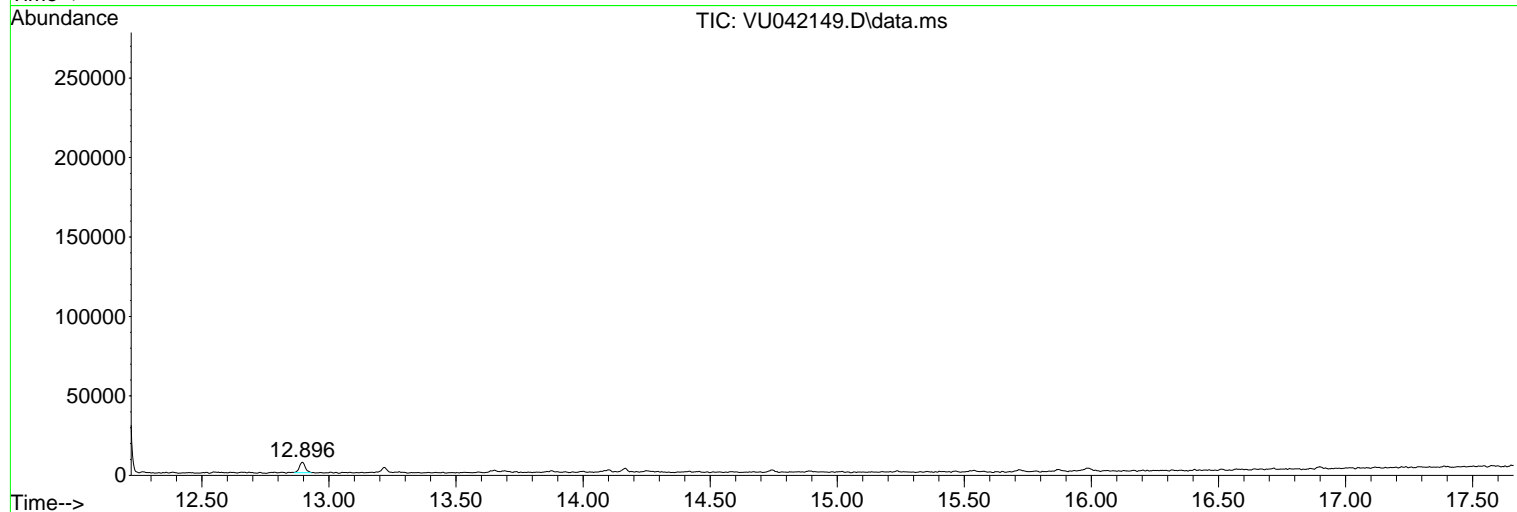
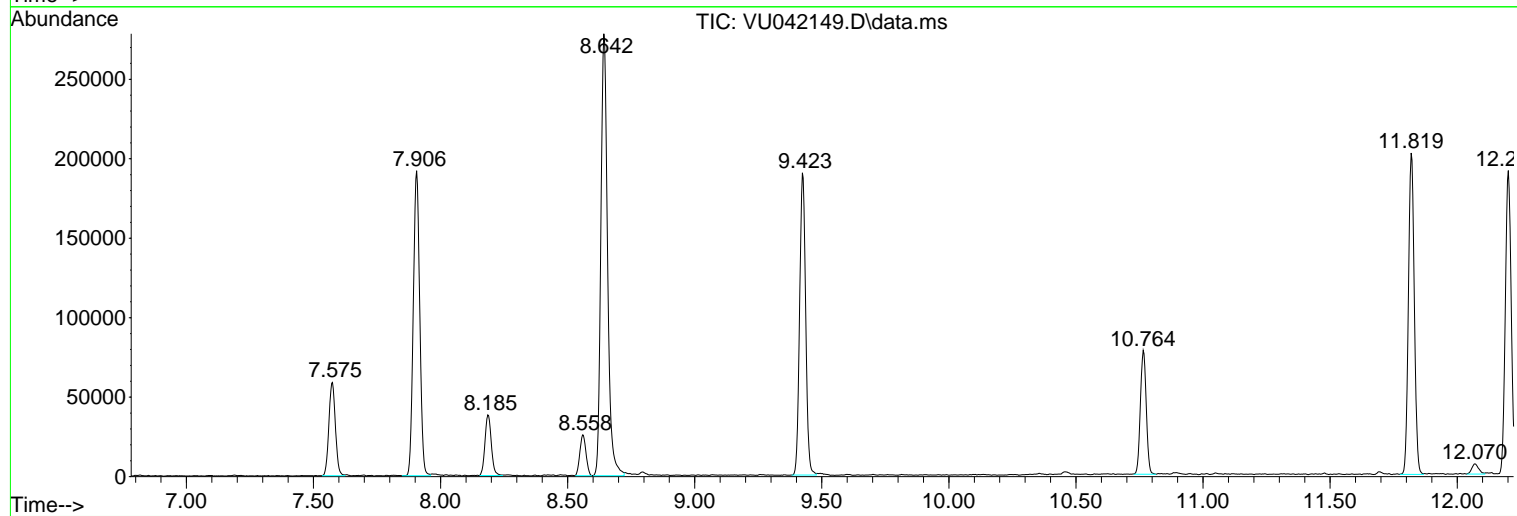
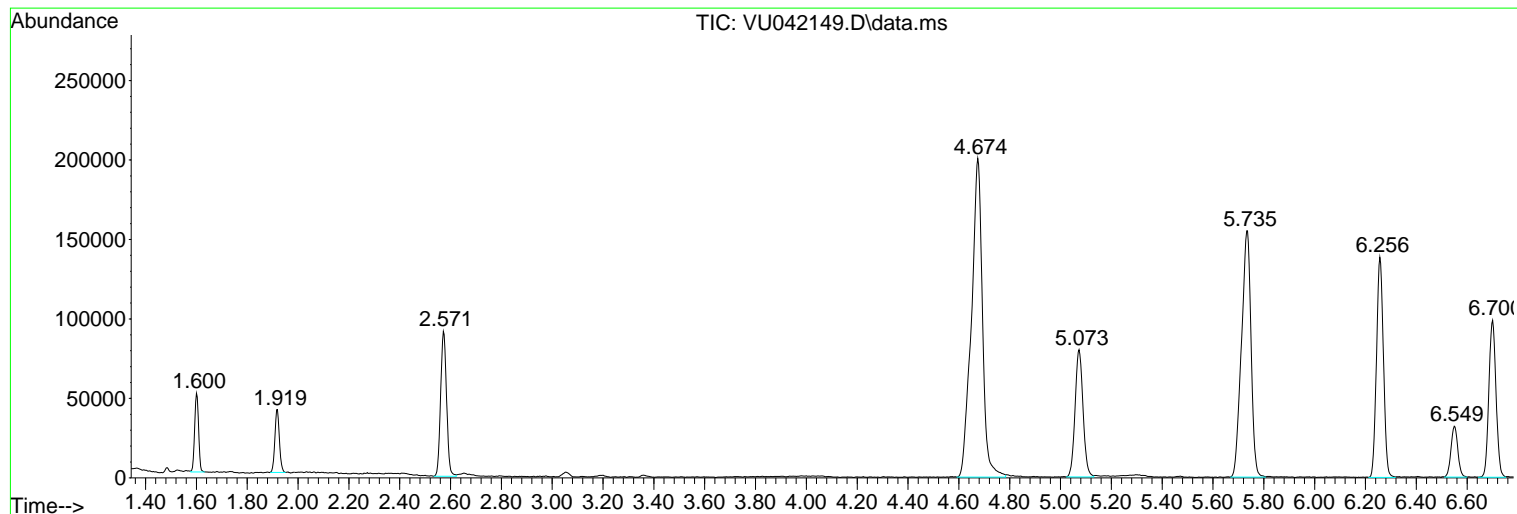
Sum of corrected areas: 4098776

Data Path : Z:\voasrv\HPCHEM1\MSVOA\_U\Data\VU012121\  
Data File : VU042149.D  
Acq On : 21 Jan 2021 14:36  
Operator : SY/MD  
Sample : M1180-08DL 5X  
Misc : 25.0mL/MSVOA\_U/WATER  
ALS Vial : 13 Sample Multiplier: 1

Instrument :  
MSVOA\_U  
ClientSampled :  
F1E23DL

Quant Method : Z:\VOASRV\HPCHEM1\MSVOA\_U\METHOD\SOMUTR012021WMA.M  
Quant Title : TRACE VOA SOM01.0

TIC Library : C:\DATABASE\NIST11.L  
TIC Integration Parameters: LSCINT.P



Data Path : Z:\voasrv\HPCHEM1\MSVOA\_U\Data\VU012121\  
Data File : VU042149.D  
Acq On : 21 Jan 2021 14:36  
Operator : SY/MD  
Sample : M1180-08DL 5X  
Misc : 25.0mL/MSVOA\_U/WATER  
ALS Vial : 13 Sample Multiplier: 1

Instrument :  
MSVOA\_U  
ClientSampled :  
F1E23DL

Quant Method : Z:\VOASRV\HPCHEM1\MSVOA\_U\METHOD\SOMUTR012021WMA.M  
Quant Title : TRACE VOA SOM01.0

TIC Library : C:\DATABASE\NIST11.L  
TIC Integration Parameters: LSCINT.P

No Library Search Compounds Detected

\*\*\*\*\*

Data Path : Z:\voasrv\HPCHEM1\MSVOA\_U\Data\VU012121\  
Data File : VU042149.D  
Acq On : 21 Jan 2021 14:36  
Operator : SY/MD  
Sample : M1180-08DL 5X  
Misc : 25.0mL/MSVOA\_U/WATER  
ALS Vial : 13 Sample Multiplier: 1

Instrument :  
MSVOA\_U  
ClientSampled :  
F1E23DL

Quant Method : Z:\VOASRV\HPCHEM1\MSVOA\_U\METHOD\SOMUTR012021WMA.M  
Quant Title : TRACE VOA SOM01.0

TIC Library : C:\DATABASE\NIST11.L  
TIC Integration Parameters: LSCINT.P

TIC Top Hit name	RT	EstConc	Units	Response	--Internal Standard--		
					#	RT	Resp Conc

---