

Data Path : Z:\voasrv\HPCHEM1\MSVOA_U\Data\VU012125\
 Data File : VU062940.D
 Acq On : 21 Jan 2025 14:33
 Operator : MD/SY
 Sample : Q1086-04DL 2X
 Misc : 25mL/MSVOA_U/WATER
 ALS Vial : 10 Sample Multiplier: 1

Instrument :
 MSVOA_U
 ClientSampleId :

Quant Time: Jan 22 02:23:08 2025
 Quant Method : Z:\voasrv\HPCHEM1\MSVOA_U\Method\SFAMUTR010225WMA.M
 Quant Title : TRACE VOA SFAM1.0
 QLast Update : Wed Jan 22 02:20:07 2025
 Response via : Initial Calibration

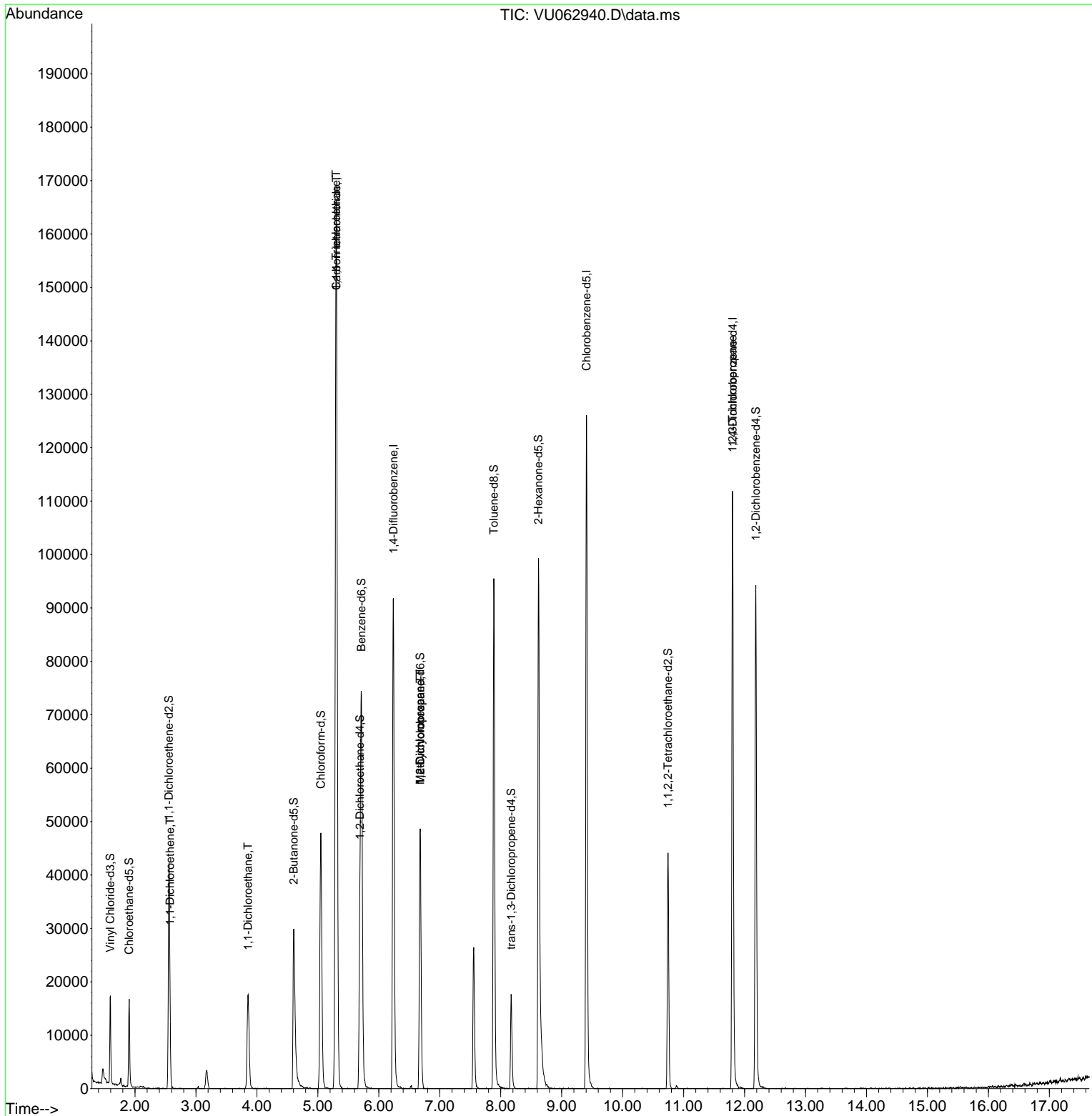
Compound	R.T.	QIon	Response	Conc	Units	Dev(Min)
Internal Standards						
1) 1,4-Difluorobenzene	6.238	114	76819	5.000	ug/L	0.00
28) Chlorobenzene-d5	9.405	117	71229	5.000	ug/L	0.00
58) 1,4-Dichlorobenzene-d4	11.804	152	34039	5.000	ug/L	0.00
System Monitoring Compounds						
4) Vinyl Chloride-d3	1.596	65	10808	2.540	ug/L	0.00
Spiked Amount	5.000	Range 40 - 130	Recovery	=	50.800%	
7) Chloroethane-d5	1.904	69	11311	3.305	ug/L	0.00
Spiked Amount	5.000	Range 65 - 130	Recovery	=	66.000%	
11) 1,1-Dichloroethene-d2	2.557	65	7444	3.377	ug/L	0.00
Spiked Amount	5.000	Range 60 - 125	Recovery	=	67.600%	
20) 2-Butanone-d5	4.605	46	41853	48.132	ug/L	0.00
Spiked Amount	50.000	Range 40 - 130	Recovery	=	96.260%	
24) Chloroform-d	5.049	84	47131	4.503	ug/L	0.00
Spiked Amount	5.000	Range 70 - 125	Recovery	=	90.000%	
26) 1,2-Dichloroethane-d4	5.689	65	26992	4.754	ug/L	0.00
Spiked Amount	5.000	Range 70 - 130	Recovery	=	95.000%	
32) Benzene-d6	5.714	84	70181	4.031	ug/L	0.00
Spiked Amount	5.000	Range 70 - 125	Recovery	=	80.600%	
36) 1,2-Dichloropropane-d6	6.679	67	20889	4.327	ug/L	0.00
Spiked Amount	5.000	Range 60 - 140	Recovery	=	86.600%	
41) Toluene-d8	7.888	98	65969	3.889	ug/L	0.00
Spiked Amount	5.000	Range 70 - 130	Recovery	=	77.800%	
43) trans-1,3-Dichloroprop...	8.171	79	11264	4.681	ug/L	0.00
Spiked Amount	5.000	Range 55 - 130	Recovery	=	93.600%	
46) 2-Hexanone-d5	8.618	63	33078	43.706	ug/L	0.00
Spiked Amount	50.000	Range 45 - 130	Recovery	=	87.420%	
56) 1,1,2,2-Tetrachloroeth...	10.743	84	20333	5.029	ug/L	0.00
Spiked Amount	5.000	Range 65 - 120	Recovery	=	100.600%	
66) 1,2-Dichlorobenzene-d4	12.184	152	27931	4.932	ug/L	0.00
Spiked Amount	5.000	Range 80 - 120	Recovery	=	98.600%	
Target Compounds						
12) 1,1-Dichloroethene	2.573	96	3020	0.633	ug/L #	1
19) 1,1-Dichloroethane	3.856	63	19620	2.148	ug/L	97
29) 1,1,1-Trichloroethane	5.300	97	128441	11.888	ug/L	98
31) Carbon tetrachloride	5.303	117	14605	1.471	ug/L	98
35) Methylcyclohexane	6.679	83	6416	0.746	ug/L #	20
37) 1,2-Dichloropropane	6.679	63	3147	0.652	ug/L #	85
61) 1,2,3-Trichloropropane	11.801	75	3051	1.011	ug/L #	60

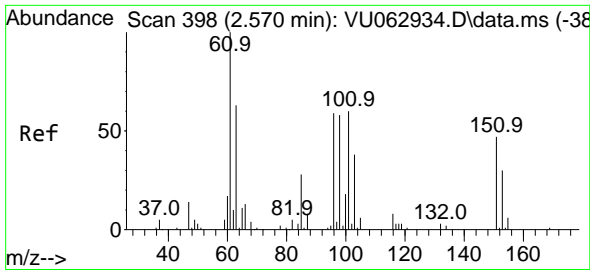
(#) = qualifier out of range (m) = manual integration (+) = signals summed

Data Path : Z:\voasrv\HPCHEM1\MSVOA_U\Data\VU012125\
 Data File : VU062940.D
 Acq On : 21 Jan 2025 14:33
 Operator : MD/SY
 Sample : Q1086-04DL 2X
 Misc : 25mL/MSVOA_U/WATER
 ALS Vial : 10 Sample Multiplier: 1

Instrument :
 MSVOA_U
 ClientSampleId :

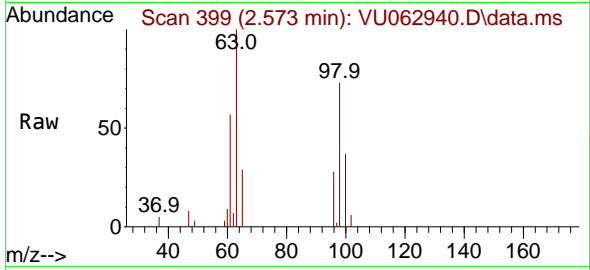
Quant Time: Jan 22 02:23:08 2025
 Quant Method : Z:\voasrv\HPCHEM1\MSVOA_U\Method\SFAMUTR010225WMA.M
 Quant Title : TRACE VOA SFAM1.0
 QLast Update : Wed Jan 22 02:20:07 2025
 Response via : Initial Calibration



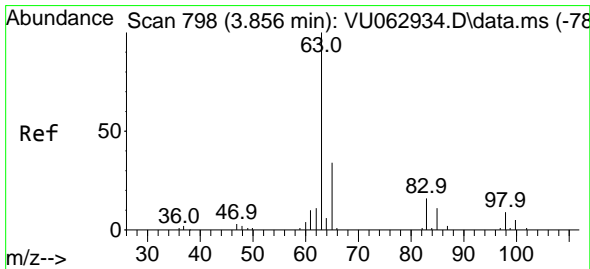
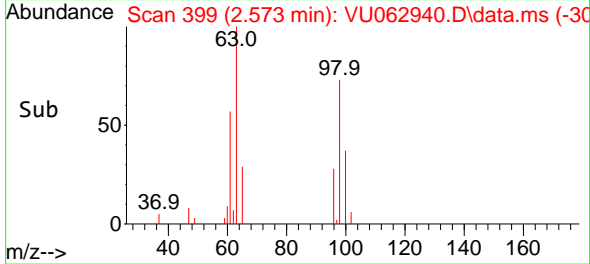
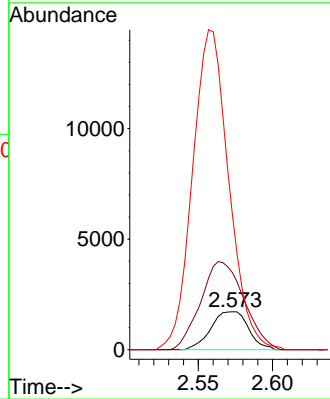


#12
 1,1-Dichloroethene
 Concen: 0.633 ug/L
 RT: 2.573 min Scan# 399
 Delta R.T. 0.003 min
 Lab File: VU062940.D
 Acq: 21 Jan 2025 14:33

Instrument : MSVOA_U
 ClientSampleId :

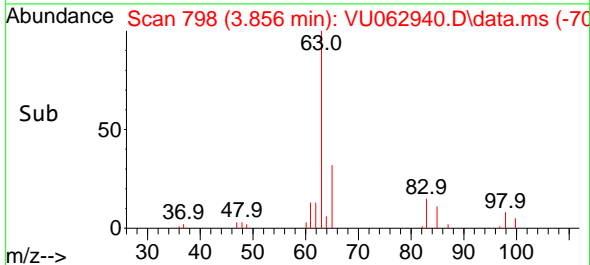
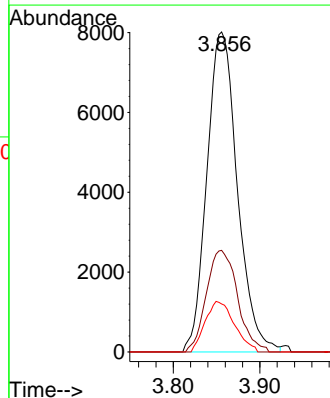
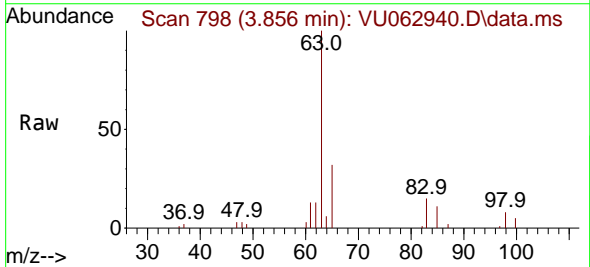


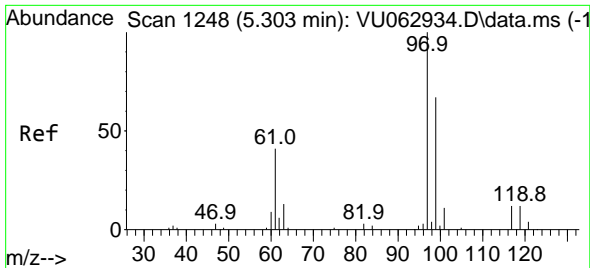
Tgt Ion: 96 Resp: 3020
 Ion Ratio Lower Upper
 96 100
 61 202.8 120.4 223.6
 63 353.2 82.3 152.9#



#19
 1,1-Dichloroethane
 Concen: 2.148 ug/L
 RT: 3.856 min Scan# 798
 Delta R.T. -0.000 min
 Lab File: VU062940.D
 Acq: 21 Jan 2025 14:33

Tgt Ion: 63 Resp: 19620
 Ion Ratio Lower Upper
 63 100
 65 31.7 20.7 38.5
 83 15.0 10.5 19.5



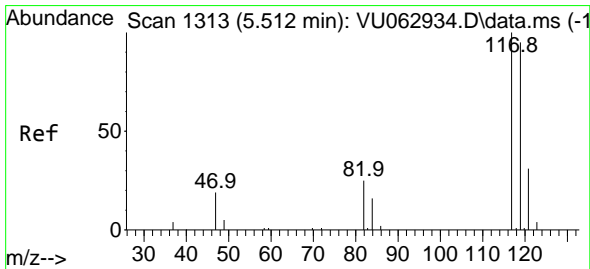
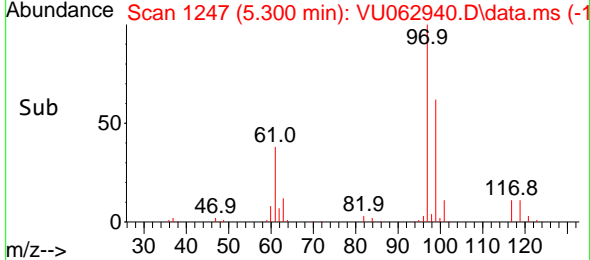
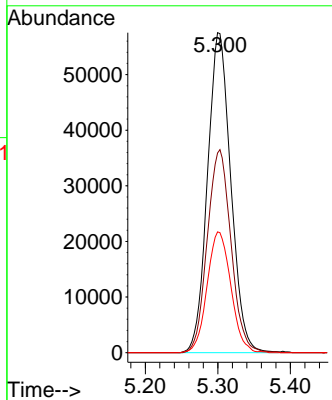
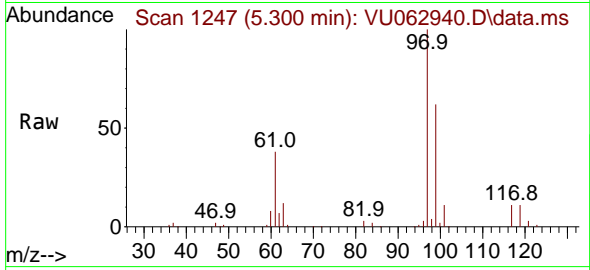


#29
 1,1,1-Trichloroethane
 Concen: 11.888 ug/L
 RT: 5.300 min Scan# 1247
 Delta R.T. -0.003 min
 Lab File: VU062940.D
 Acq: 21 Jan 2025 14:33

Instrument : MSVOA_U
 ClientSampleId :

Tgt Ion: 97 Resp: 128441

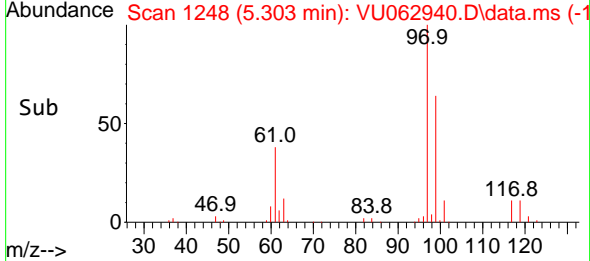
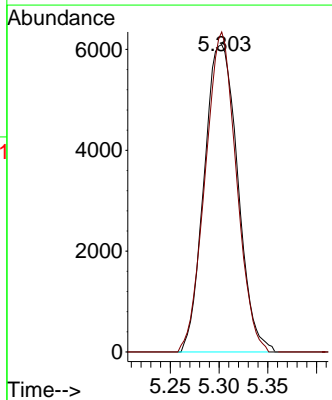
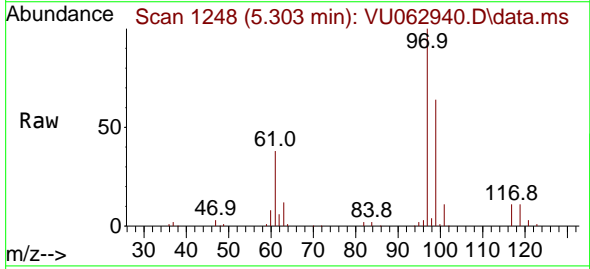
Ion	Ratio	Lower	Upper
97	100		
99	64.7	52.4	78.6
61	38.5	32.2	48.4

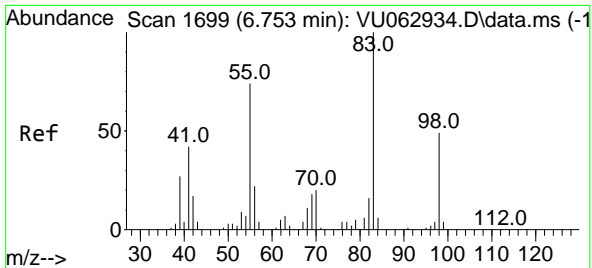


#31
 Carbon tetrachloride
 Concen: 1.471 ug/L
 RT: 5.303 min Scan# 1248
 Delta R.T. -0.209 min
 Lab File: VU062940.D
 Acq: 21 Jan 2025 14:33

Tgt Ion: 117 Resp: 14605

Ion	Ratio	Lower	Upper
117	100		
119	96.7	78.6	118.0

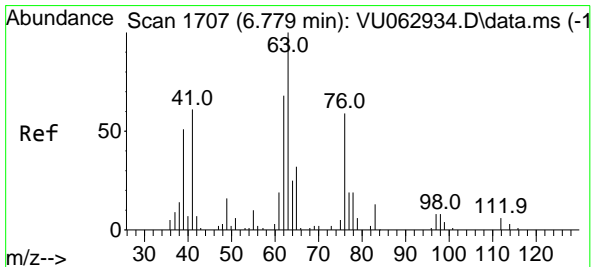
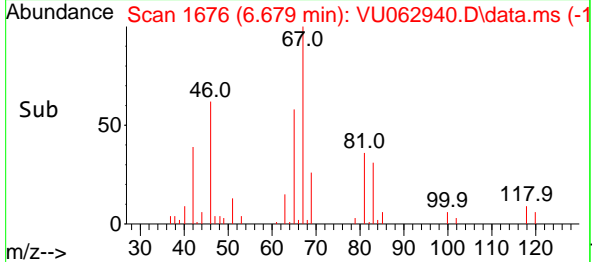
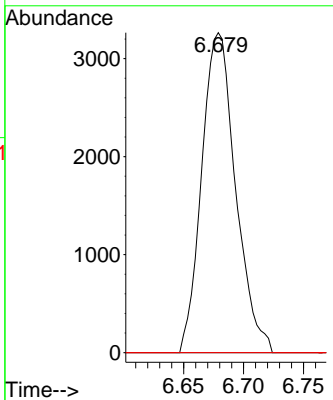
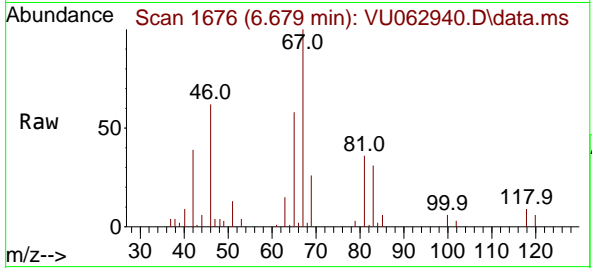




#35
 Methylcyclohexane
 Concen: 0.746 ug/L
 RT: 6.679 min Scan# 1676
 Delta R.T. -0.074 min
 Lab File: VU062940.D
 Acq: 21 Jan 2025 14:33

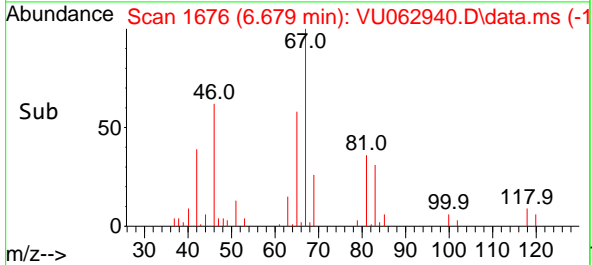
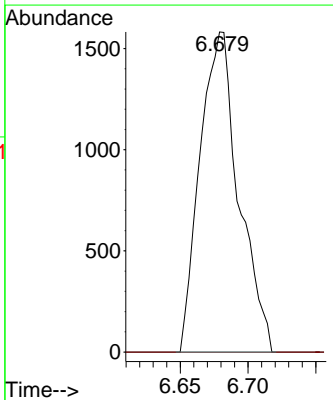
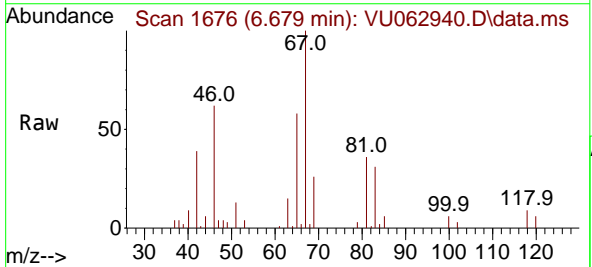
Instrument : MSVOA_U
 ClientSampleId :

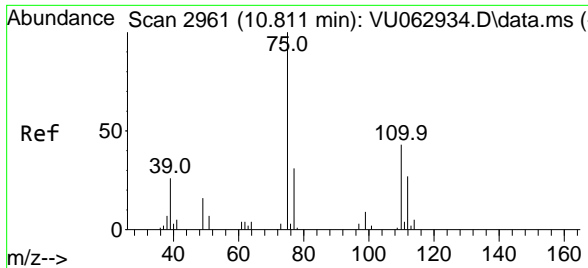
Tgt Ion	Resp	Lower	Upper
83	6416		
55	0.0	57.2	85.8#
98	0.0	36.6	55.0#



#37
 1,2-Dichloropropane
 Concen: 0.652 ug/L
 RT: 6.679 min Scan# 1676
 Delta R.T. -0.100 min
 Lab File: VU062940.D
 Acq: 21 Jan 2025 14:33

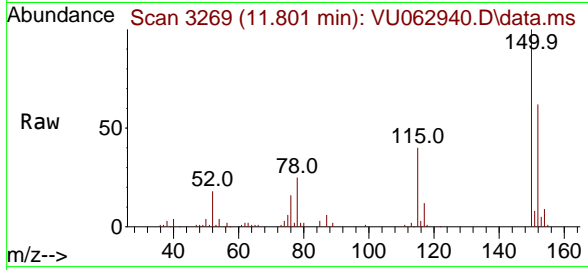
Tgt Ion	Resp	Lower	Upper
63	3147		
112	0.0	3.8	5.8#





#61
 1,2,3-Trichloropropane
 Concen: 1.011 ug/L
 RT: 11.801 min Scan# 31
 Delta R.T. 0.990 min
 Lab File: VU062940.D
 Acq: 21 Jan 2025 14:33

Instrument :
 MSVOA_U
 ClientSampleId :



Tgt Ion: 75 Resp: 3051

Ion	Ratio	Lower	Upper
75	100		
110	0.0	33.2	49.8#
77	35.5	25.9	38.9

