

Data Path : Z:\voasrv\HPCHEM1\MSVOA\_U\Data\VU012324\  
 Data File : VU057601.D  
 Acq On : 24 Jan 2024 05:12  
 Operator : MD/SY  
 Sample : P1227-11  
 Misc : 25.0mL/MSVOA\_U/WATER  
 ALS Vial : 42 Sample Multiplier: 1

Instrument :  
 MSVOA\_U  
 ClientSampleId :

Quant Time: Jan 24 05:28:34 2024  
 Quant Method : Z:\voasrv\HPCHEM1\MSVOA\_U\Method\SFAMUTR012324WMA.M  
 Quant Title : TRACE VOA SFAM1.0  
 QLast Update : Wed Jan 24 01:55:34 2024  
 Response via : Initial Calibration

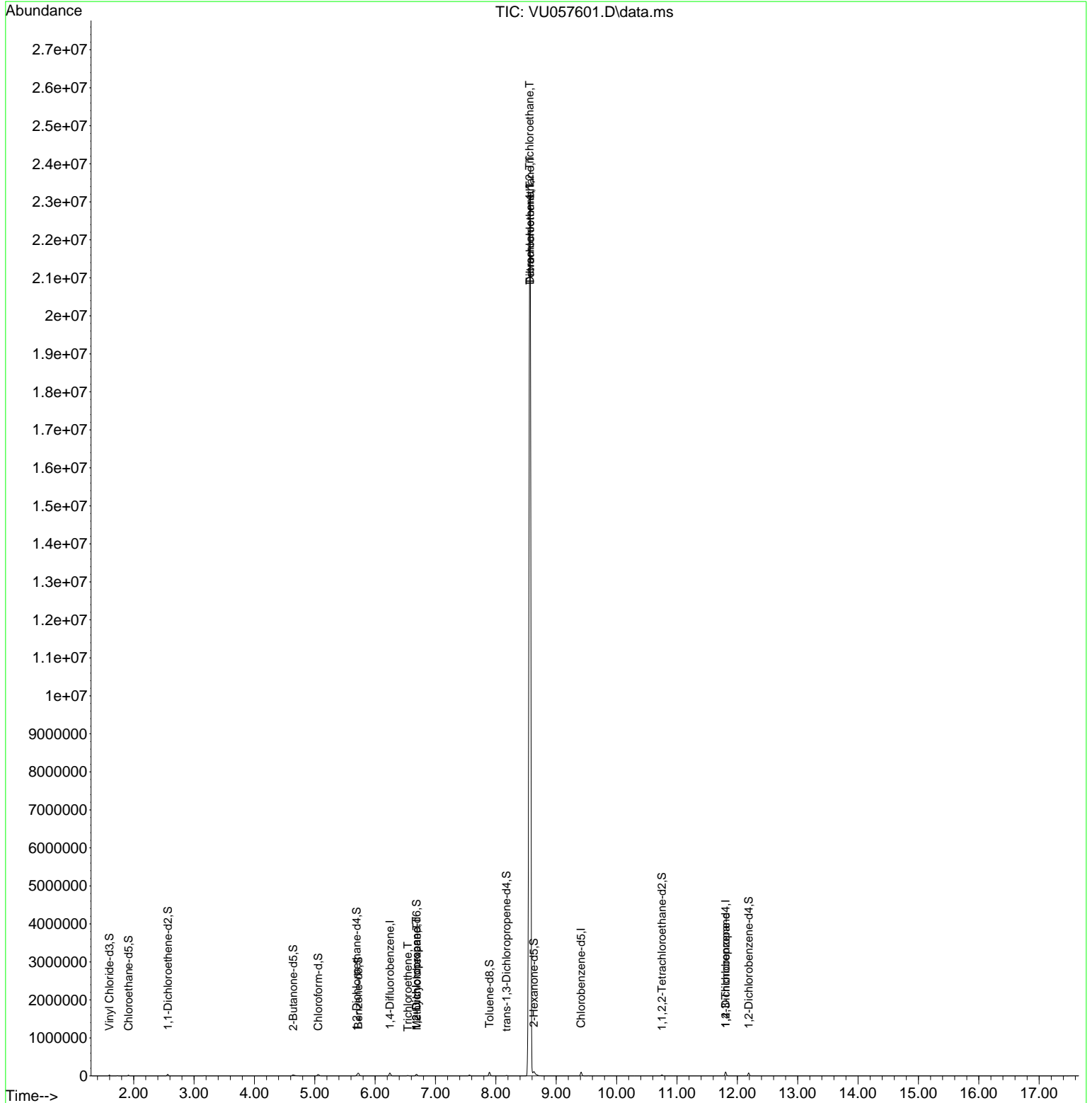
Compound	R.T.	QIon	Response	Conc	Units	Dev(Min)
Internal Standards						
1) 1,4-Difluorobenzene	6.245	114	61515	5.000	ug/L	0.00
28) Chlorobenzene-d5	9.412	117	55075	5.000	ug/L	0.00
58) 1,4-Dichlorobenzene-d4	11.807	152	27169	5.000	ug/L	0.00
System Monitoring Compounds						
4) Vinyl Chloride-d3	1.599	65	16316	4.814	ug/L	0.00
Spiked Amount	5.000	Range 40 - 130	Recovery	=	96.200%	
7) Chloroethane-d5	1.914	69	14193	4.998	ug/L	0.00
Spiked Amount	5.000	Range 65 - 130	Recovery	=	100.000%	
11) 1,1-Dichloroethene-d2	2.566	65	7885	4.948	ug/L	0.00
Spiked Amount	5.000	Range 60 - 125	Recovery	=	99.000%	
20) 2-Butanone-d5	4.640	46	34088	53.313	ug/L	0.00
Spiked Amount	50.000	Range 40 - 130	Recovery	=	106.620%	
24) Chloroform-d	5.055	84	33465	4.864	ug/L	0.00
Spiked Amount	5.000	Range 70 - 125	Recovery	=	97.200%	
26) 1,2-Dichloroethane-d4	5.695	65	16512	5.282	ug/L	0.00
Spiked Amount	5.000	Range 70 - 130	Recovery	=	105.600%	
32) Benzene-d6	5.721	84	68805	5.326	ug/L	0.00
Spiked Amount	5.000	Range 70 - 125	Recovery	=	106.600%	
36) 1,2-Dichloropropane-d6	6.685	67	20815	5.342	ug/L	0.00
Spiked Amount	5.000	Range 60 - 140	Recovery	=	106.800%	
41) Toluene-d8	7.894	98	64132	5.230	ug/L	0.00
Spiked Amount	5.000	Range 70 - 130	Recovery	=	104.600%	
43) trans-1,3-Dichloroprop...	8.177	79	7797	5.021	ug/L	0.00
Spiked Amount	5.000	Range 55 - 130	Recovery	=	100.400%	
46) 2-Hexanone-d5	8.631	63	23968	48.372	ug/L	0.00
Spiked Amount	50.000	Range 45 - 130	Recovery	=	96.740%	
56) 1,1,2,2-Tetrachloroeth...	10.749	84	13192	5.051	ug/L	0.00
Spiked Amount	5.000	Range 65 - 120	Recovery	=	101.000%	
66) 1,2-Dichlorobenzene-d4	12.187	152	20226	5.305	ug/L	0.00
Spiked Amount	5.000	Range 80 - 120	Recovery	=	106.000%	
Target Compounds						
34) Trichloroethene	6.541	95	4036	0.775	ug/L	83
35) Methylcyclohexane	6.689	83	4640	0.552	ug/L #	22
37) 1,2-Dichloropropane	6.682	63	2317	0.490	ug/L #	89
45) 1,1,2-Trichloroethane	8.560	97	63903	20.789	ug/L #	10
47) Tetrachloroethene	8.566	164	6121965	1599.672	ug/L	97
49) Dibromochloromethane	8.566	129	6520381	1638.066	ug/L #	10
61) 1,2,3-Trichloropropane	11.804	75	3490	1.280	ug/L #	62

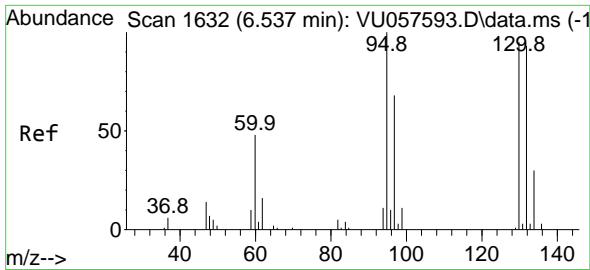
(#) = qualifier out of range (m) = manual integration (+) = signals summed

Data Path : Z:\voasrv\HPCHEM1\MSVOA\_U\Data\VU012324\  
 Data File : VU057601.D  
 Acq On : 24 Jan 2024 05:12  
 Operator : MD/SY  
 Sample : P1227-11  
 Misc : 25.0mL/MSVOA\_U/WATER  
 ALS Vial : 42 Sample Multiplier: 1

Instrument :  
 MSVOA\_U  
 ClientSampleId :

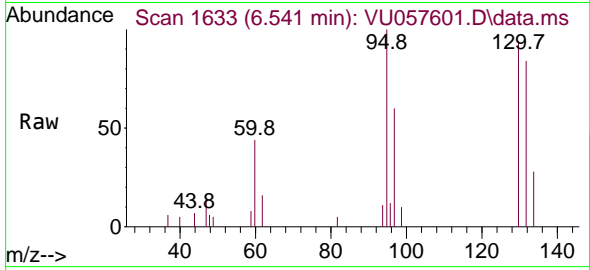
Quant Time: Jan 24 05:28:34 2024  
 Quant Method : Z:\voasrv\HPCHEM1\MSVOA\_U\Method\SFAMUTR012324WMA.M  
 Quant Title : TRACE VOA SFAM1.0  
 QLast Update : Wed Jan 24 01:55:34 2024  
 Response via : Initial Calibration



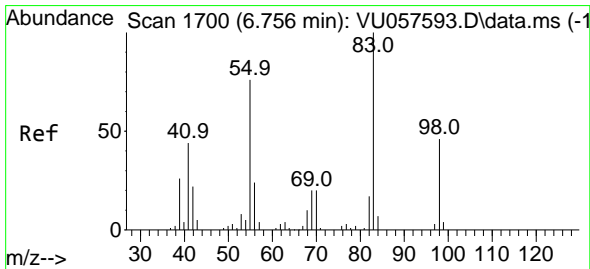
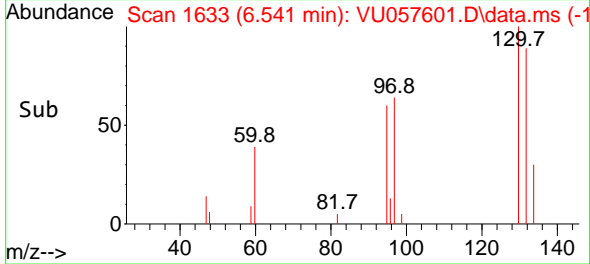
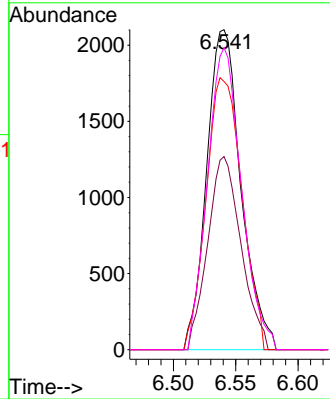


#34  
 Trichloroethene  
 Concen: 0.775 ug/L  
 RT: 6.541 min Scan# 1633  
 Delta R.T. 0.003 min  
 Lab File: VU057601.D  
 Acq: 24 Jan 2024 05:12

Instrument :  
 MSVOA\_U  
 ClientSampleId :

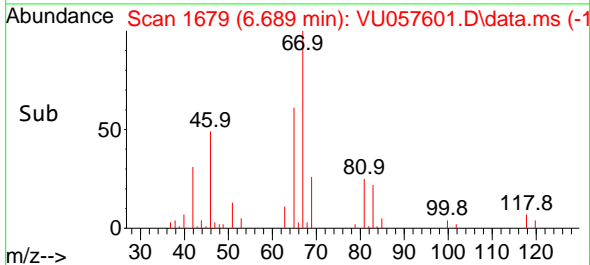
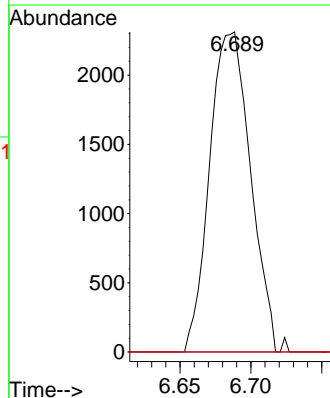
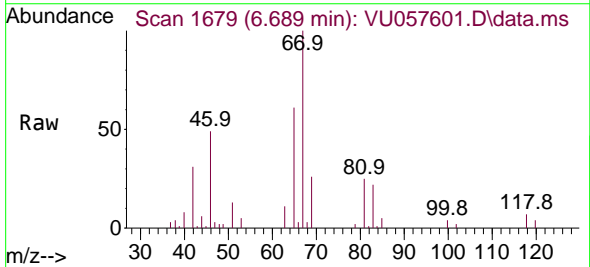


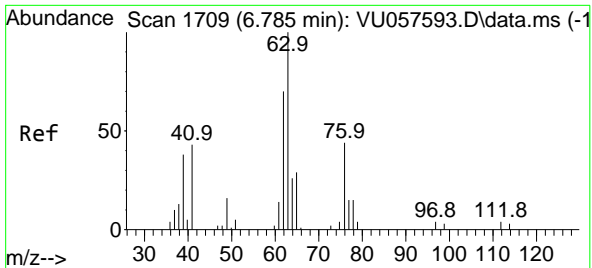
Tgt Ion: 95 Resp: 4036  
 Ion Ratio Lower Upper  
 95 100  
 97 53.9 46.1 85.5  
 132 74.8 66.1 122.8  
 130 84.3 68.7 127.5



#35  
 Methylcyclohexane  
 Concen: 0.552 ug/L  
 RT: 6.689 min Scan# 1679  
 Delta R.T. -0.068 min  
 Lab File: VU057601.D  
 Acq: 24 Jan 2024 05:12

Tgt Ion: 83 Resp: 4640  
 Ion Ratio Lower Upper  
 83 100  
 55 0.0 61.4 92.0#  
 98 6.7 38.2 57.4#

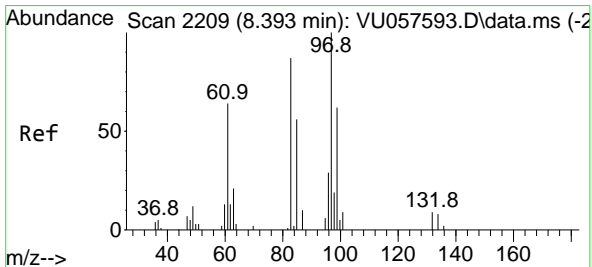
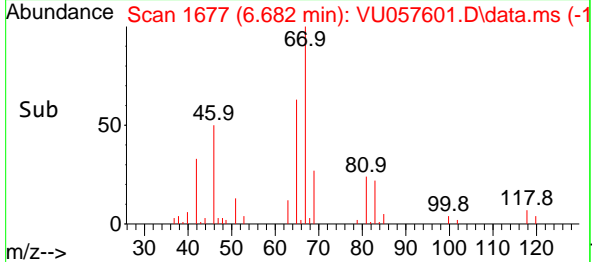
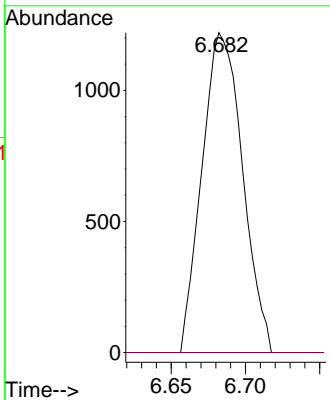
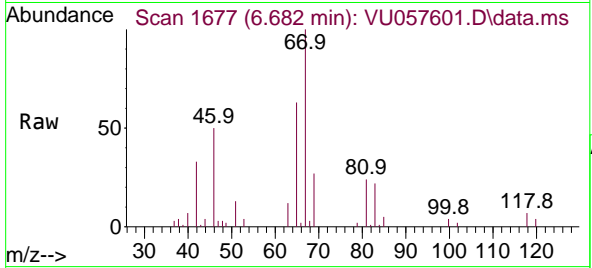




#37  
 1,2-Dichloropropane  
 Concen: 0.490 ug/L  
 RT: 6.682 min Scan# 1  
 Delta R.T. -0.103 min  
 Lab File: VU057601.D  
 Acq: 24 Jan 2024 05:12

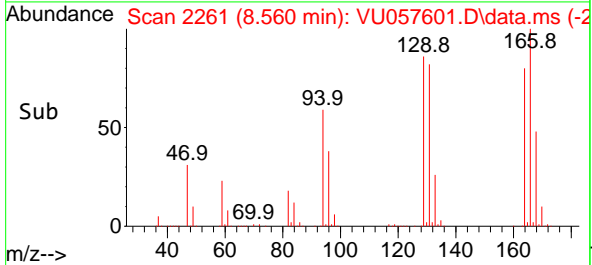
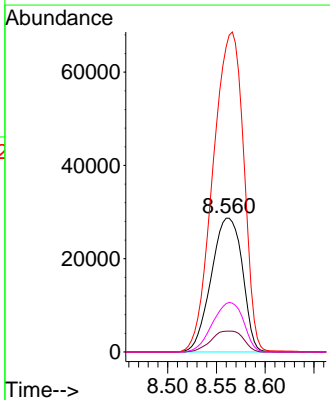
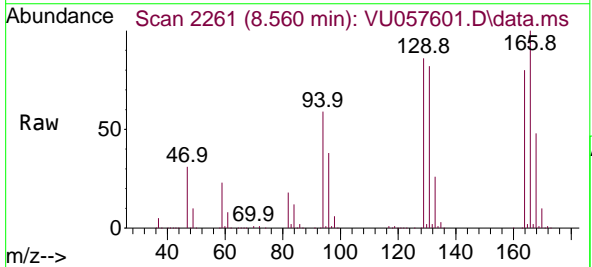
Instrument :  
 MSVOA\_U  
 ClientSampleId :

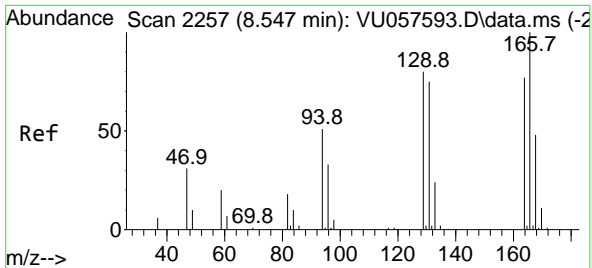
Tgt Ion: 63 Resp: 2317  
 Ion Ratio Lower Upper  
 63 100  
 112 0.0 3.0 4.4#



#45  
 1,1,2-Trichloroethane  
 Concen: 20.789 ug/L  
 RT: 8.560 min Scan# 2261  
 Delta R.T. 0.167 min  
 Lab File: VU057601.D  
 Acq: 24 Jan 2024 05:12

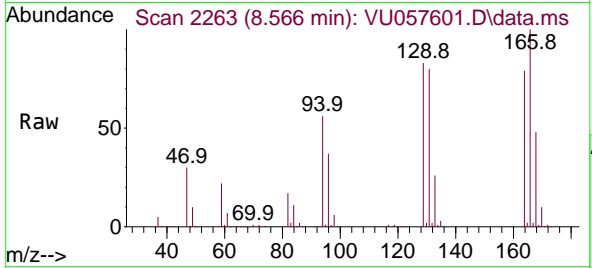
Tgt Ion: 97 Resp: 63903  
 Ion Ratio Lower Upper  
 97 100  
 99 15.6 45.1 83.7#  
 83 228.0 62.3 115.7#  
 85 36.1 40.9 75.9#



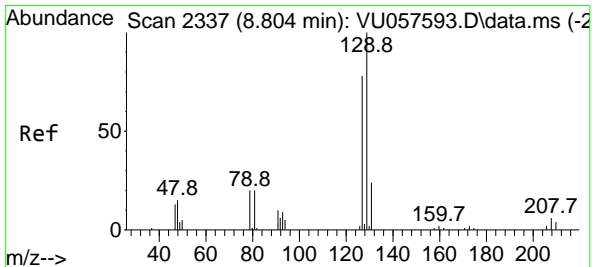
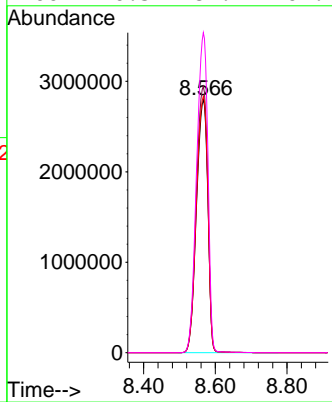
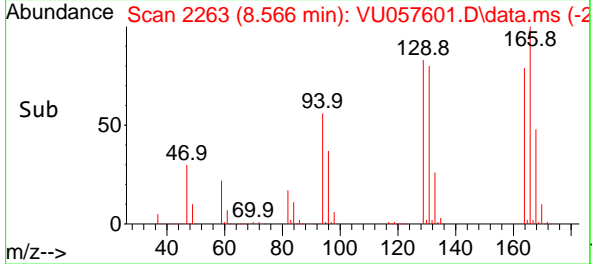


#47  
 Tetrachloroethene  
 Concen: 1599.672 ug/L  
 RT: 8.566 min Scan# 2263  
 Delta R.T. 0.019 min  
 Lab File: VU057601.D  
 Acq: 24 Jan 2024 05:12

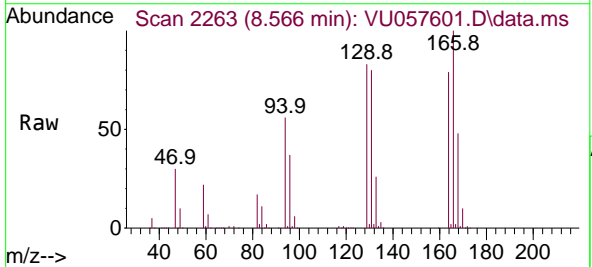
Instrument :  
 MSVOA\_U  
 ClientSampleId :



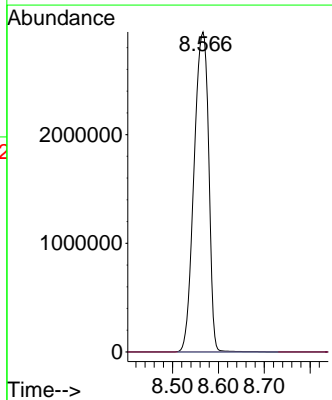
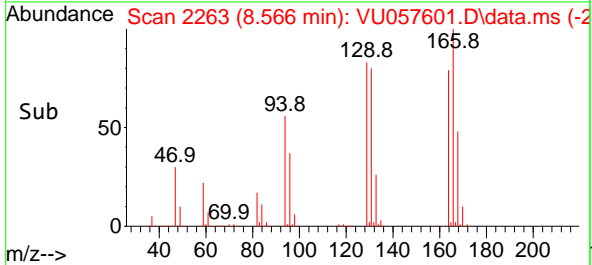
Tgt Ion:164 Resp: 6121965  
 Ion Ratio Lower Upper  
 164 100  
 129 105.3 71.3 132.5  
 131 101.4 68.1 126.5  
 166 126.5 87.4 162.4

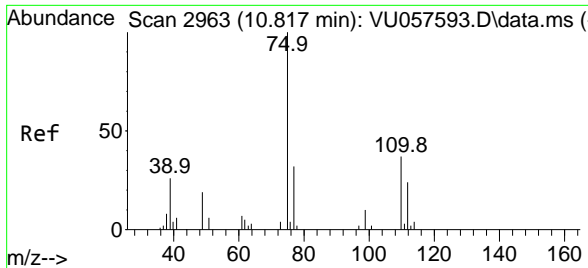


#49  
 Dibromochloromethane  
 Concen: 1638.066 ug/L  
 RT: 8.566 min Scan# 2263  
 Delta R.T. -0.238 min  
 Lab File: VU057601.D  
 Acq: 24 Jan 2024 05:12



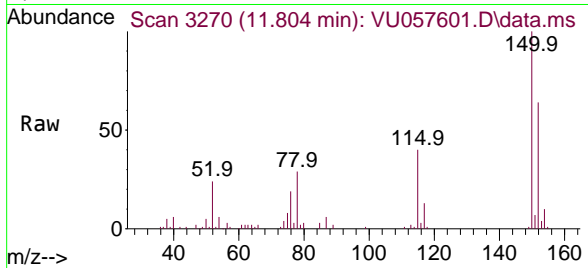
Tgt Ion:129 Resp: 6520381  
 Ion Ratio Lower Upper  
 129 100  
 127 0.0 54.5 101.1#





#61  
 1,2,3-Trichloropropane  
 Concen: 1.280 ug/L  
 RT: 11.804 min Scan# 31  
 Delta R.T. 0.987 min  
 Lab File: VU057601.D  
 Acq: 24 Jan 2024 05:12

Instrument :  
 MSVOA\_U  
 ClientSampleId :



Tgt Ion: 75 Resp: 3490

Ion	Ratio	Lower	Upper
75	100		
110	0.0	30.1	45.1#
77	36.6	25.5	38.3

