

Data Path : Z:\voasrv\HPCHEM1\MSVOA_U\Data\VU012423\
 Data File : VU052784.D
 Acq On : 24 Jan 2023 11:55
 Operator : JC/MD
 Sample : VU0124WBS02
 Misc : 25.0mL/MSVOA_U/WATER
 ALS Vial : 6 Sample Multiplier: 1

Instrument :
 MSVOA_U
 ClientSampleId :
 VU0124WBS02

Manual Integrations
 APPROVED

Reviewed By :Krupa Patel 01/27/2023
 Supervised By :Mahesh Dadoda 01/30/2023

Quant Time: Jan 25 01:35:18 2023
 Quant Method : Z:\voasrv\HPCHEM1\MSVOA_U\Method\524U012323DW.M
 Quant Title : METHOD 524.2 VOLATILES DRINKING WATER
 QLast Update : Tue Jan 24 05:16:59 2023
 Response via : Initial Calibration

Compound	R.T.	QIon	Response	Conc	Units	Dev(Min)
Internal Standards						
1) Fluorobenzene	6.108	96	38129	1.000	ug/l	# 0.00
System Monitoring Compounds						
57) 4-Bromofluorobenzene	10.629	95	12223	0.964	ug/l	0.00
Spiked Amount	1.000		Recovery	=	96.000%	
68) 1,2-Dichlorobenzene-d4	12.189	152	13315	1.021	ug/l	0.00
Spiked Amount	1.000		Recovery	=	102.000%	
Target Compounds						
						Qvalue
2) Dichlorodifluoromethane	1.385	85	25711	1.992	ug/l	99
3) Chloromethane	1.520	50	22275	1.819	ug/l	99
4) Vinyl Chloride	1.604	62	21432	1.812	ug/l	97
5) Bromomethane	1.858	94	13219	2.151	ug/l	94
6) Chloroethane	1.935	64	13246	1.863	ug/l	97
7) Trichlorofluoromethane	2.138	101	33923	1.969	ug/l	99
8) 1,1,2-Trichloro-1,2,2-...	2.581	101	20294	2.155	ug/l	95
9) 1,1-Dichloroethene	2.578	96	18274	2.054	ug/l	95
10) Iodomethane	2.723	142	19545	1.985	ug/l	95
11) Allyl Chloride	2.922	41	22114	2.080	ug/l	96
12) Acrylonitrile	3.330	53	8120m	4.304	ug/l	
13) Acetone	2.665	43	31961	11.946	ug/l	94
14) Carbon Disulfide	2.793	76	59467	1.995	ug/l	99
15) Methylene Chloride	3.044	84	27314	2.542	ug/l	99
16) trans-1,2-Dichloroethene	3.350	96	20854	2.107	ug/l	94
17) 1,1-Dichloroethane	3.867	63	36194	2.165	ug/l	98
18) 2-Butanone	4.719	43	32063	10.315	ug/l	99
19) Cyclohexane	5.385	56	27811m	1.892	ug/l	
20) Methylcyclohexane	6.761	83	29159	1.778	ug/l	97
21) 2,2-Dichloropropane	4.658	77	31578	2.034	ug/l	99
22) cis-1,2-Dichloroethene	4.665	96	20867	2.017	ug/l	97
23) Diethyl Ether	2.375	59	12571	1.999	ug/l	99
24) tert-Butyl Alcohol	3.346	59	16028m	21.163	ug/l	
25) Methyl tert-Butyl Ether	3.359	73	41019	2.010	ug/l	97
26) Bromochloromethane	4.970	128	9968	2.064	ug/l	96
27) Chloroform	5.083	83	39136	2.184	ug/l	99
28) 1,1,1-Trichloroethane	5.311	97	34480	2.084	ug/l	97
29) 1,1-Dichloropropene	5.520	75	26619	1.908	ug/l	99
30) Carbon Tetrachloride	5.520	117	29979	1.997	ug/l	98
31) Isopropyl Ether	3.990	45	46646	1.941	ug/l	93
32) Ethyl-t-butyl ether	4.498	59	43091	1.921	ug/l	99
33) Tert-Amyl methyl ether	5.938	73	36930	1.862	ug/l	99
34) Propionitrile	4.806	54	7854m	11.036	ug/l	
35) Benzene	5.771	78	79454	1.963	ug/l	97
36) 1,2-Dichloroethane	5.790	62	24241	1.994	ug/l	100
37) Trichloroethene	6.539	130	21790	1.975	ug/l	96
38) 1,2-Dichloropropane	6.787	63	19800	1.928	ug/l	98
39) Methacrylonitrile	4.973	41	4930	1.734	ug/l	# 95
40) Methyl acrylate	4.848	55	9748	1.935	ug/l	# 90
41) Tetrahydrofuran	5.067	42	5395m	3.816	ug/l	
42) 1-Chlorobutane	5.456	56	35604	1.996	ug/l	99
43) Dibromomethane	6.912	93	10069	1.937	ug/l	98
44) Bromodichloromethane	7.102	83	27645	1.960	ug/l	99

Data Path : Z:\voasrv\HPCHEM1\MSVOA_U\Data\VU012423\
 Data File : VU052784.D
 Acq On : 24 Jan 2023 11:55
 Operator : JC/MD
 Sample : VU0124WBS02
 Misc : 25.0mL/MSVOA_U/WATER
 ALS Vial : 6 Sample Multiplier: 1

Instrument :
 MSVOA_U
 ClientSampleId :
 VU0124WBS02

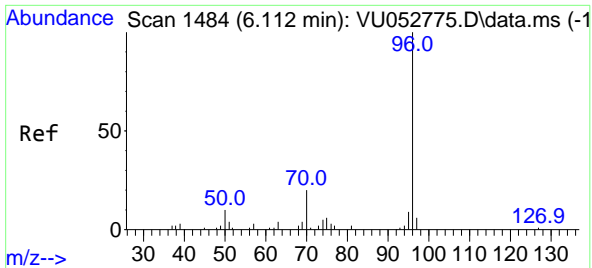
Manual Integrations
 APPROVED

Reviewed By :Krupa Patel 01/27/2023
 Supervised By :Mahesh Dadoda 01/30/2023

Quant Time: Jan 25 01:35:18 2023
 Quant Method : Z:\voasrv\HPCHEM1\MSVOA_U\Method\524U012323DW.M
 Quant Title : METHOD 524.2 VOLATILES DRINKING WATER
 QLast Update : Tue Jan 24 05:16:59 2023
 Response via : Initial Calibration

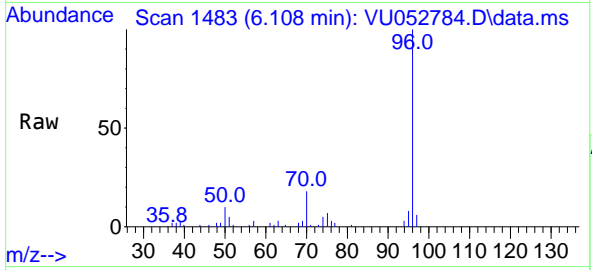
Compound	R.T.	QIon	Response	Conc	Units	Dev(Min)
45) 4-Methyl-2-Pentanone	7.790	43	48604	8.898	ug/l	98
46) t-1,4-Dichloro-2-butene	10.825	75	10110m	3.530	ug/l	
47) Methyl methacrylate	6.960	69	16729	3.621	ug/l	96
48) Ethyl methacrylate	8.330	69	14442	1.724	ug/l	98
49) Toluene	7.967	92	47479	1.932	ug/l	100
50) t-1,3-Dichloropropene	8.205	75	22712	1.847	ug/l	99
51) cis-1,3-Dichloropropene	7.604	75	27804	1.922	ug/l	99
52) 1,1,2-Trichloroethane	8.395	97	14346	1.941	ug/l	95
53) 1,3-Dichloropropane	8.571	76	24039	1.881	ug/l	95
54) 2-Hexanone	8.684	43	43986	9.205	ug/l	96
55) Dibromochloromethane	8.806	129	18307	1.894	ug/l	98
56) 1,2-Dibromoethane	8.919	107	13197	1.875	ug/l	99
58) Tetrachloroethene	8.549	164	20054	2.014	ug/l	95
59) Chlorobenzene	9.443	112	51935	1.942	ug/l	99
60) 1,1,1,2-Tetrachloroethane	9.530	131	20386	1.969	ug/l	98
61) Pentachloroethane	11.420	117	16987	2.003	ug/l	96
62) Hexachloroethane	12.468	117	16561	1.933	ug/l	97
63) Ethyl Benzene	9.565	91	77252	1.783	ug/l	99
64) m/p-Xylenes	9.690	106	64170	3.715	ug/l	95
65) o-Xylene	10.095	106	32124	1.927	ug/l	96
66) Styrene	10.108	104	50097	1.914	ug/l	99
67) Bromoform	10.288	173	10950	1.919	ug/l #	94
69) Isopropylbenzene	10.481	105	80713	1.903	ug/l	100
70) 1,1,2,2-Tetrachloroethane	10.777	83	17993	1.953	ug/l	99
71) 1,2,3-Trichloropropane	10.825	75	15684m	1.966	ug/l	
72) Bromobenzene	10.777	156	20740	1.925	ug/l	98
73) n-propylbenzene	10.902	120	21704	1.890	ug/l	98
74) 2-Chlorotoluene	10.983	126	21057	1.965	ug/l	98
75) 1,3,5-Trimethylbenzene	11.083	105	69725	1.953	ug/l	98
76) 4-Chlorotoluene	11.092	126	22397	2.037	ug/l	95
77) tert-Butylbenzene	11.417	119	71982	1.952	ug/l	99
78) 1,2,4-Trimethylbenzene	11.462	105	71585	1.988	ug/l	99
79) sec-Butylbenzene	11.639	105	91769	1.965	ug/l	100
80) Nitrobenzene	13.208	77	3677	6.447	ug/l	87
81) p-Isopropyltoluene	11.787	119	75753	1.936	ug/l	98
82) 1,3-Dichlorobenzene	11.742	146	43352	1.971	ug/l	100
83) 1,4-Dichlorobenzene	11.832	146	43410	1.966	ug/l	98
84) n-Butylbenzene	12.205	91	62315	1.903	ug/l	98
85) 1,2-Dichlorobenzene	12.208	146	41296	1.990	ug/l	99
86) 1,2-Dibromo-3-Chloropr...	12.989	75	2934	1.719	ug/l	94
87) 1,2,4-Trichlorobenzene	13.835	180	21720	1.745	ug/l	97
88) Hexachlorobutadiene	14.015	225	16842	1.930	ug/l	98
89) Naphthalene	14.082	128	33352	1.382	ug/l	99
90) 1,2,3-Trichlorobenzene	14.324	180	19610	1.660	ug/l	99

(#) = qualifier out of range (m) = manual integration (+) = signals summed



#1
 Fluorobenzene
 Concen: 1.000 ug/l
 RT: 6.108 min Scan# 14
 Delta R.T. -0.004 min
 Lab File: VU052784.D
 Acq: 24 Jan 2023 11:55

Instrument : MSVOA_U
 Client Sample Id : VU0124WBS02

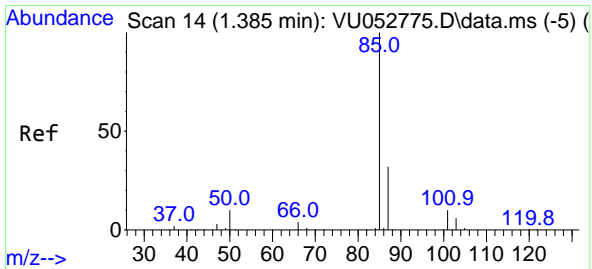
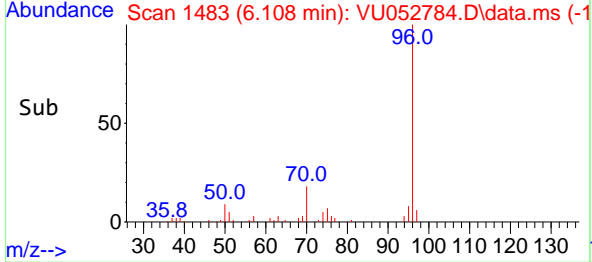
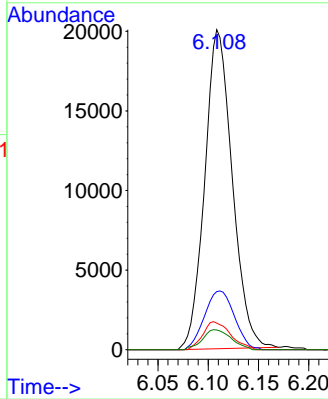


Tgt Ion: 96 Resp: 38129

Ion	Ratio	Lower	Upper
96	100		
70	20.0	16.2	24.4
95	8.8	7.4	11.0
97	6.5	0.0	0.0

Manual Integrations
 APPROVED

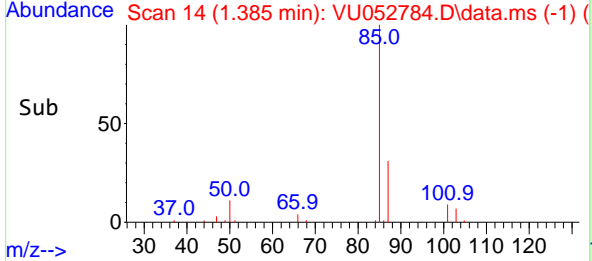
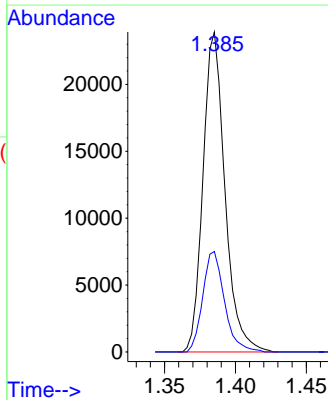
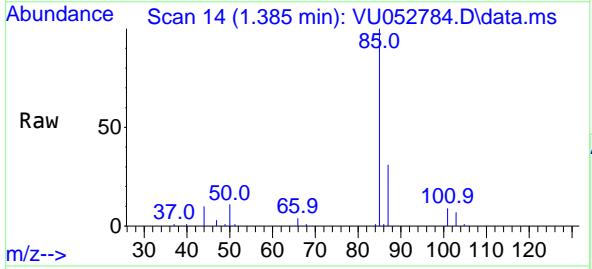
Reviewed By :Krupa Patel 01/27/2023
 Supervised By :Mahesh Dadoda 01/30/2023

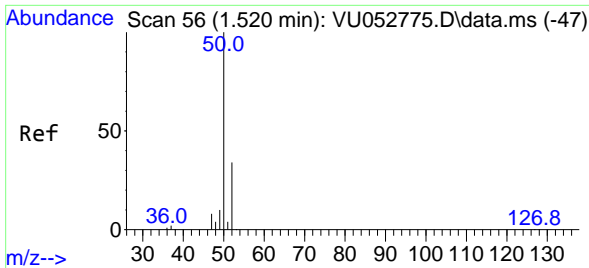


#2
 Dichlorodifluoromethane
 Concen: 1.992 ug/l
 RT: 1.385 min Scan# 14
 Delta R.T. -0.000 min
 Lab File: VU052784.D
 Acq: 24 Jan 2023 11:55

Tgt Ion: 85 Resp: 25711

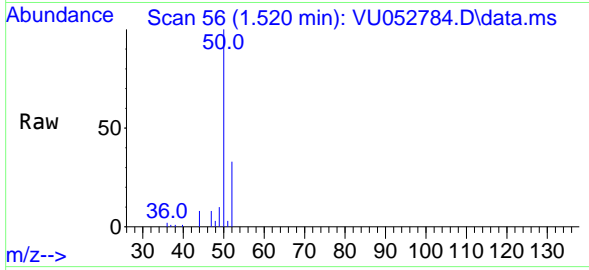
Ion	Ratio	Lower	Upper
85	100		
87	31.4	16.1	48.2





#3
 Chloromethane
 Concen: 1.819 ug/l
 RT: 1.520 min Scan# 50
 Delta R.T. -0.000 min
 Lab File: VU052784.D
 Acq: 24 Jan 2023 11:55

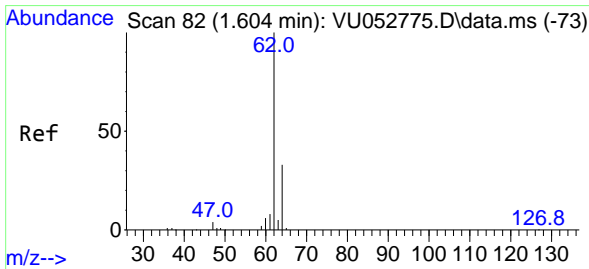
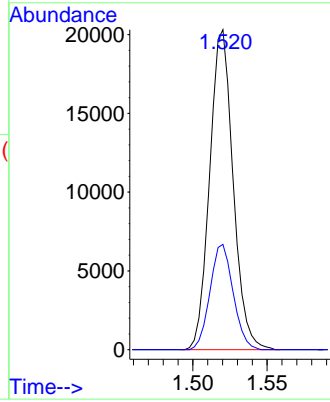
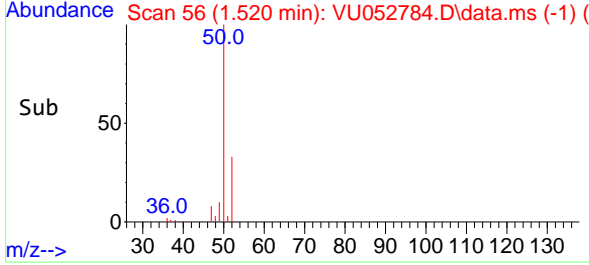
Instrument : MSVOA_U
 Client Sample Id : VU0124WBS02



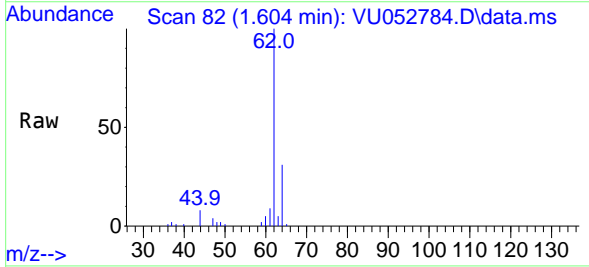
Tgt Ion: 50 Resp: 2227
 Ion Ratio Lower Upper
 50 100
 52 32.9 26.8 40.2

Manual Integrations
APPROVED

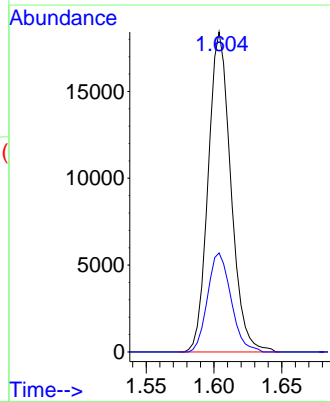
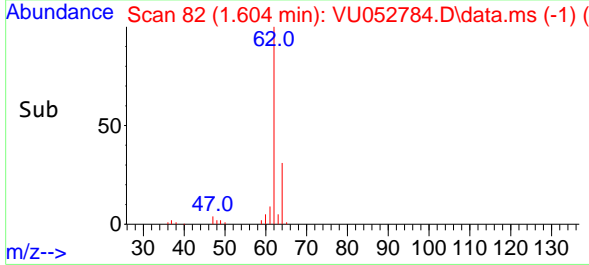
Reviewed By :Krupa Patel 01/27/2023
 Supervised By :Mahesh Dadoda 01/30/2023

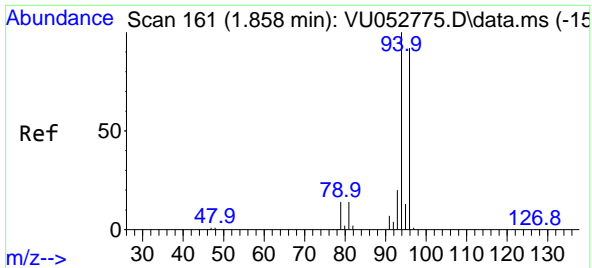


#4
 Vinyl Chloride
 Concen: 1.812 ug/l
 RT: 1.604 min Scan# 82
 Delta R.T. -0.000 min
 Lab File: VU052784.D
 Acq: 24 Jan 2023 11:55



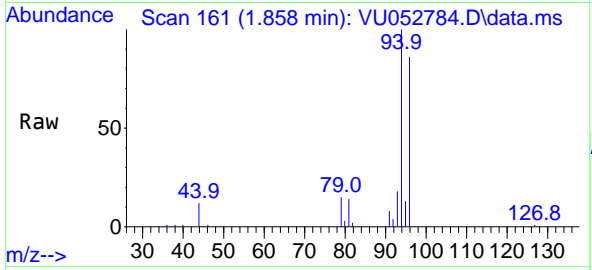
Tgt Ion: 62 Resp: 21432
 Ion Ratio Lower Upper
 62 100
 64 30.9 26.0 39.0





#5
 Bromomethane
 Concen: 2.151 ug/l
 RT: 1.858 min Scan# 161
 Delta R.T. -0.000 min
 Lab File: VU052784.D
 Acq: 24 Jan 2023 11:55

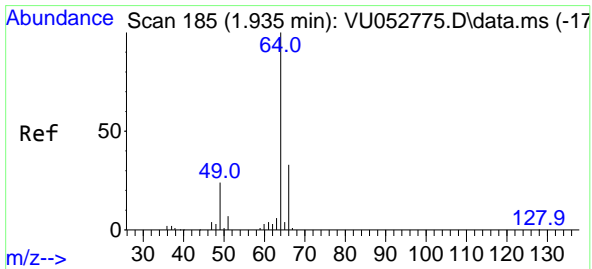
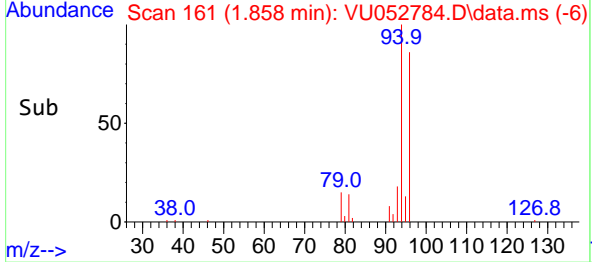
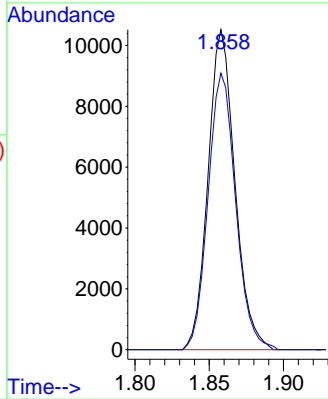
Instrument : MSVOA_U
 Client Sample Id : VU0124WBS02



Tgt Ion: 94 Resp: 13219
 Ion Ratio Lower Upper
 94 100
 96 86.4 73.8 110.6

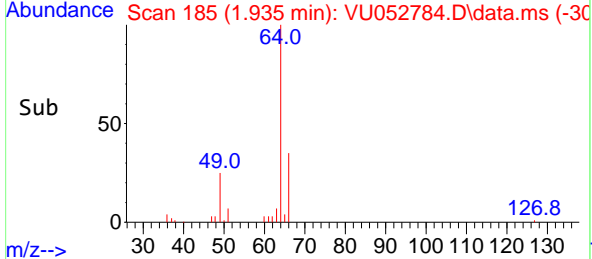
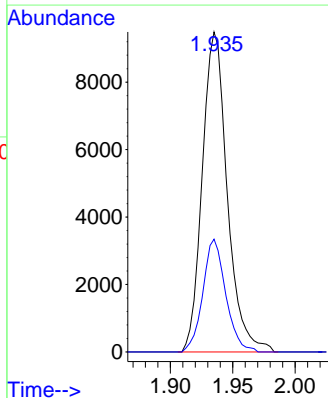
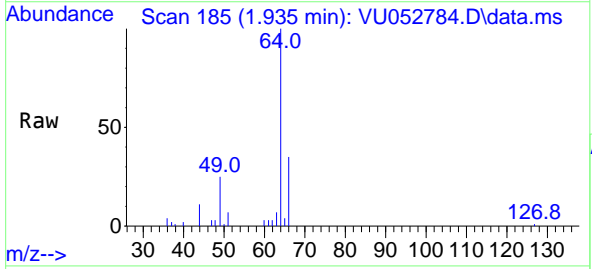
Manual Integrations
 APPROVED

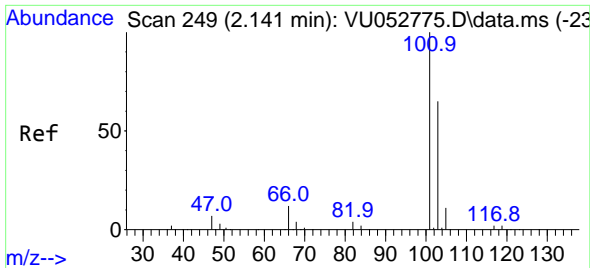
Reviewed By :Krupa Patel 01/27/2023
 Supervised By :Mahesh Dadoda 01/30/2023



#6
 Chloroethane
 Concen: 1.863 ug/l
 RT: 1.935 min Scan# 185
 Delta R.T. -0.000 min
 Lab File: VU052784.D
 Acq: 24 Jan 2023 11:55

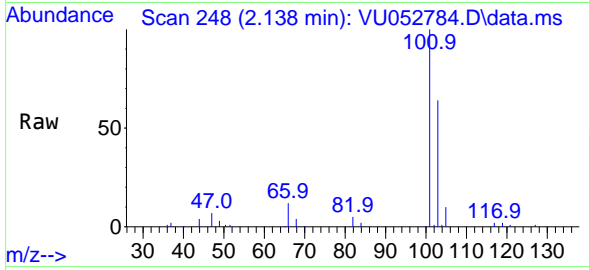
Tgt Ion: 64 Resp: 13246
 Ion Ratio Lower Upper
 64 100
 66 35.2 26.6 40.0





#7
 Trichlorofluoromethane
 Concen: 1.969 ug/l
 RT: 2.138 min Scan# 249
 Delta R.T. -0.003 min
 Lab File: VU052784.D
 Acq: 24 Jan 2023 11:55

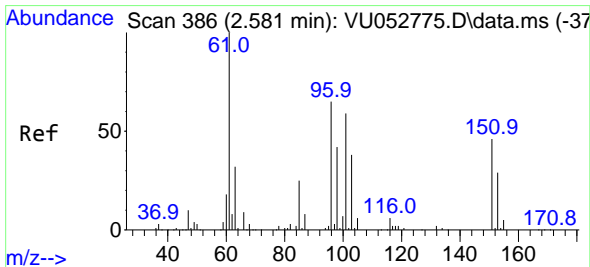
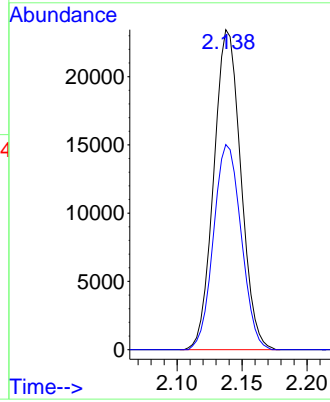
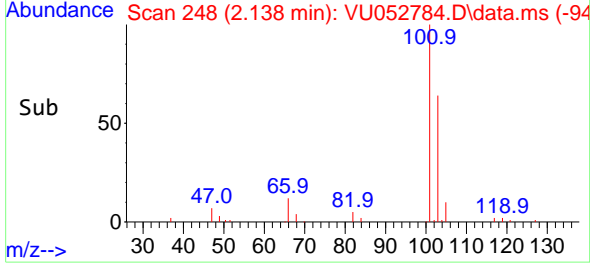
Instrument :
 MSVOA_U
 ClientSampleId :
 VU0124WBS02



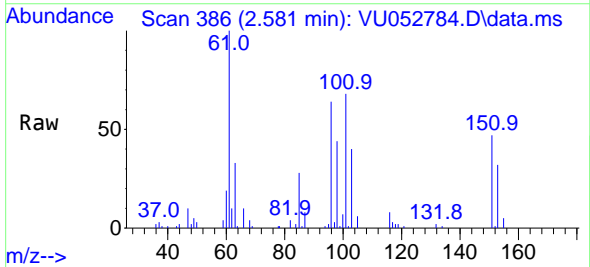
Tgt Ion:101 Resp: 3392
 Ion Ratio Lower Upper
 101 100
 103 64.1 51.6 77.4

Manual Integrations
APPROVED

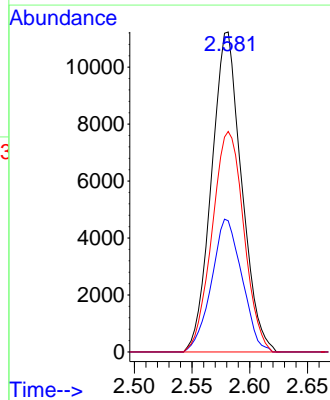
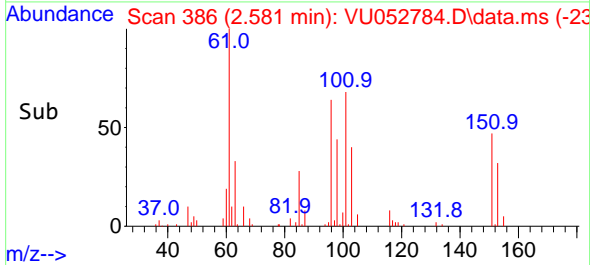
Reviewed By :Krupa Patel 01/27/2023
 Supervised By :Mahesh Dadoda 01/30/2023

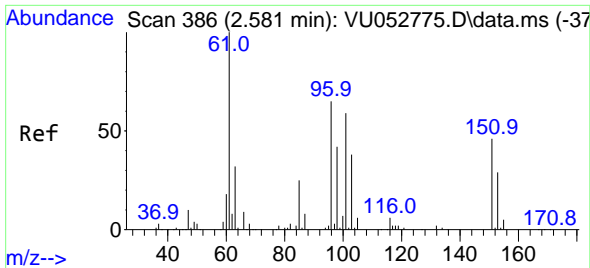


#8
 1,1,2-Trichloro-1,2,2-trifluoroethane
 Concen: 2.155 ug/l
 RT: 2.581 min Scan# 386
 Delta R.T. -0.000 min
 Lab File: VU052784.D
 Acq: 24 Jan 2023 11:55



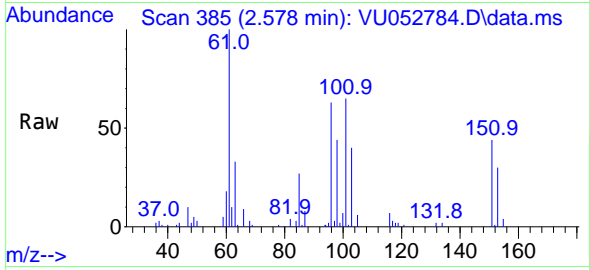
Tgt Ion:101 Resp: 20294
 Ion Ratio Lower Upper
 101 100
 85 42.2 34.1 51.1
 151 72.9 63.0 94.4





#9
 1,1-Dichloroethene
 Concen: 2.054 ug/l
 RT: 2.578 min Scan# 386
 Delta R.T. -0.003 min
 Lab File: VU052784.D
 Acq: 24 Jan 2023 11:55

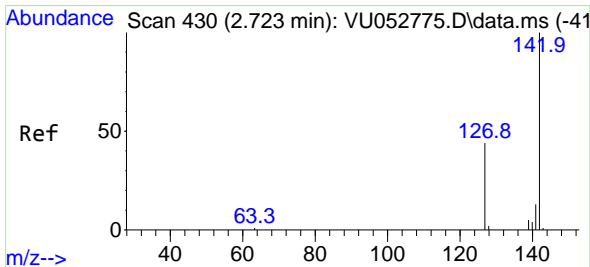
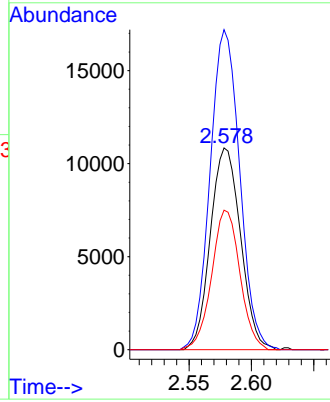
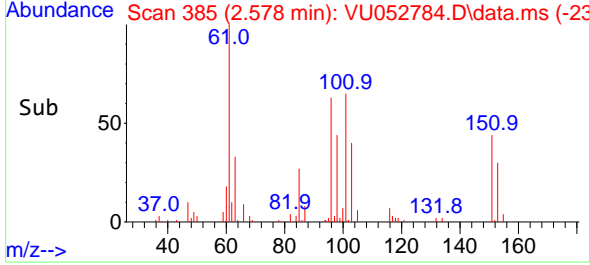
Instrument :
 MSVOA_U
 Client Sample Id :
 VU0124WBS02



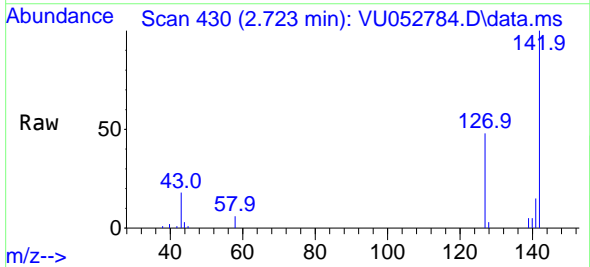
Tgt Ion: 96 Resp: 18274
 Ion Ratio Lower Upper
 96 100
 61 158.6 0.0 460.5
 98 69.2 0.0 128.0

Manual Integrations
APPROVED

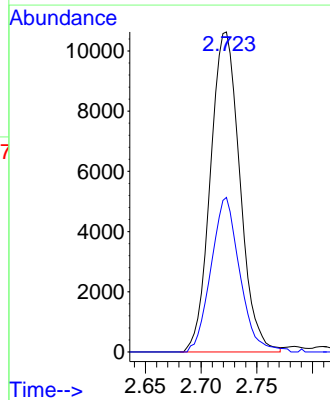
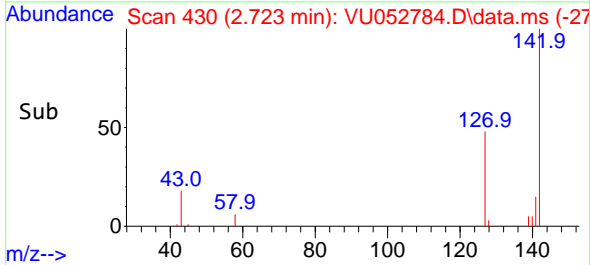
Reviewed By :Krupa Patel 01/27/2023
 Supervised By :Mahesh Dadoda 01/30/2023

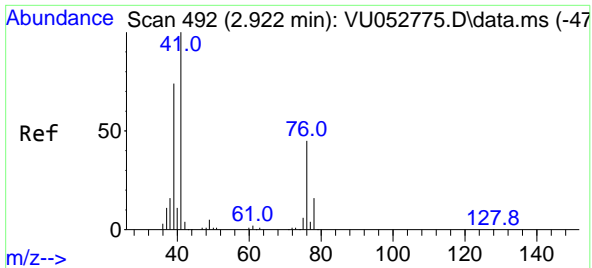


#10
 Iodomethane
 Concen: 1.985 ug/l
 RT: 2.723 min Scan# 430
 Delta R.T. -0.000 min
 Lab File: VU052784.D
 Acq: 24 Jan 2023 11:55



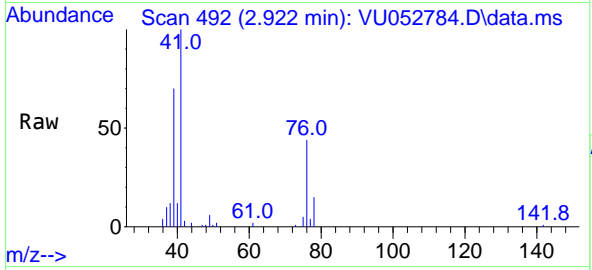
Tgt Ion:142 Resp: 19545
 Ion Ratio Lower Upper
 142 100
 127 47.2 35.4 53.0





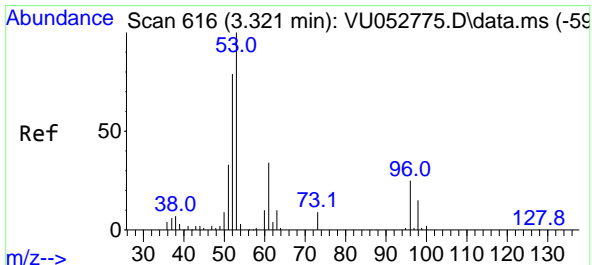
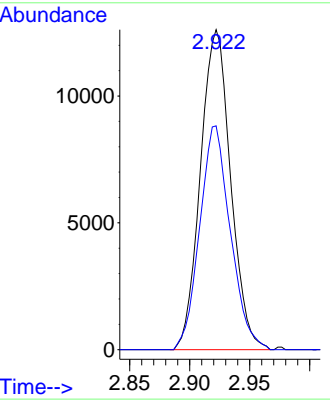
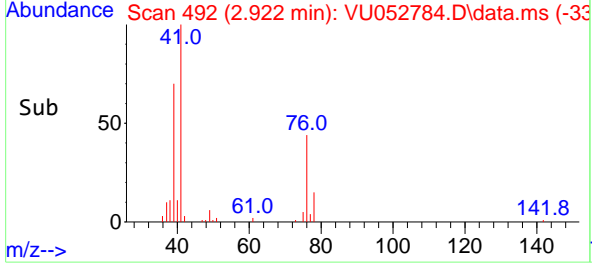
#11
 Allyl Chloride
 Concen: 2.080 ug/l
 RT: 2.922 min Scan# 492
 Delta R.T. -0.000 min
 Lab File: VU052784.D
 Acq: 24 Jan 2023 11:55

Instrument : MSVOA_U
 Client Sample Id : VU0124WBS02

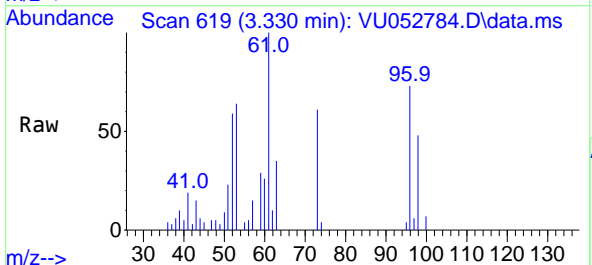


Tgt Ion: 41 Resp: 22114
 Ion Ratio Lower Upper
 41 100
 39 71.0 59.3 88.9

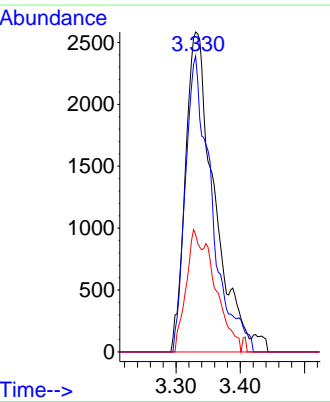
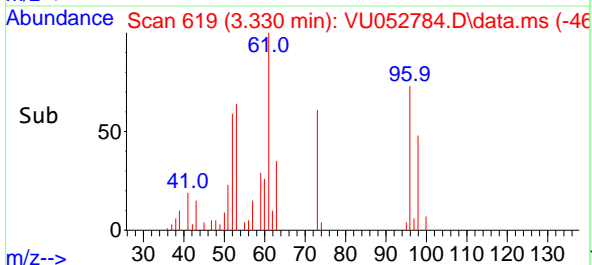
Manual Integrations
APPROVED
 Reviewed By :Krupa Patel 01/27/2023
 Supervised By :Mahesh Dadoda 01/30/2023

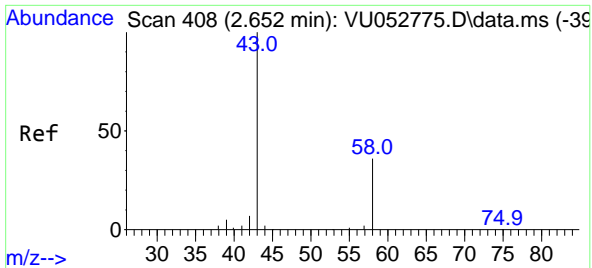


#12
 Acrylonitrile
 Concen: 4.304 ug/l m
 RT: 3.330 min Scan# 619
 Delta R.T. 0.010 min
 Lab File: VU052784.D
 Acq: 24 Jan 2023 11:55



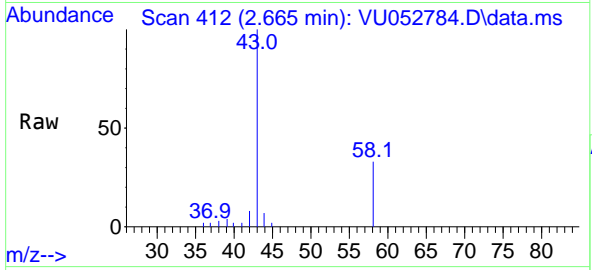
Tgt Ion: 53 Resp: 8120
 Ion Ratio Lower Upper
 53 100
 52 83.3 63.0 94.4
 51 19.5 31.3 46.9#





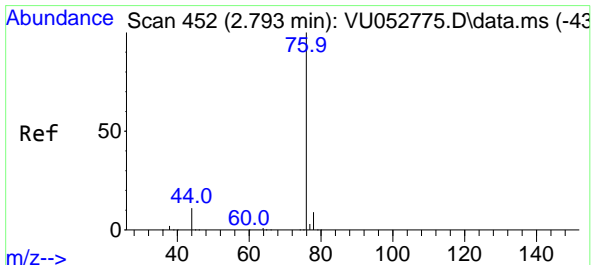
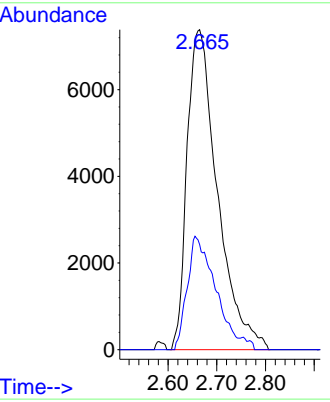
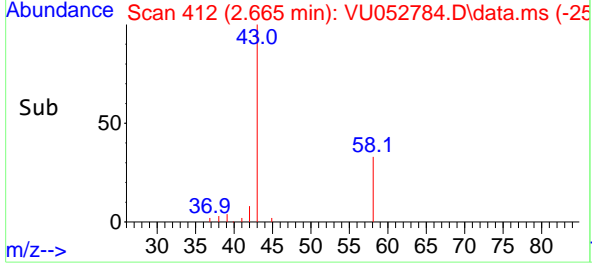
#13
 Acetone
 Concen: 11.946 ug/l
 RT: 2.665 min Scan# 412
 Delta R.T. 0.013 min
 Lab File: VU052784.D
 Acq: 24 Jan 2023 11:55

Instrument : MSVOA_U
 Client Sample Id : VU0124WBS02

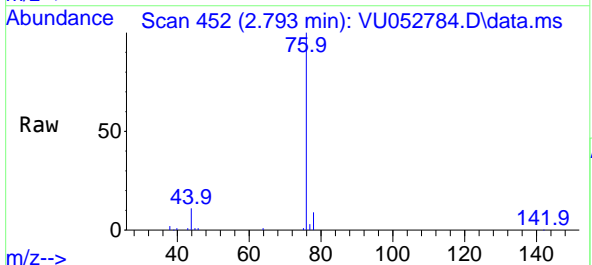


Tgt Ion: 43 Resp: 3196
 Ion Ratio Lower Upper
 43 100
 58 32.8 29.0 43.4

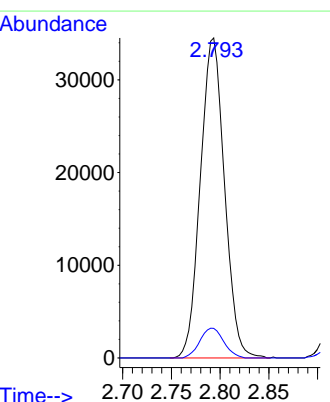
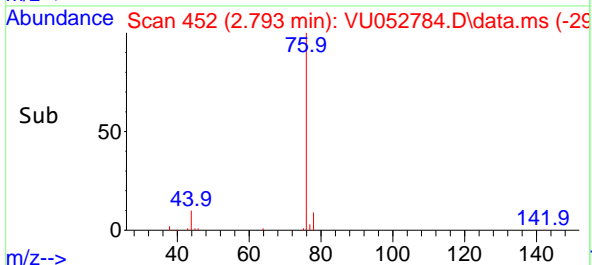
Manual Integrations
APPROVED
 Reviewed By :Krupa Patel 01/27/2023
 Supervised By :Mahesh Dadoda 01/30/2023

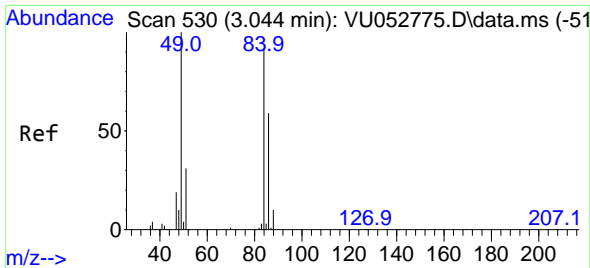


#14
 Carbon Disulfide
 Concen: 1.995 ug/l
 RT: 2.793 min Scan# 452
 Delta R.T. -0.000 min
 Lab File: VU052784.D
 Acq: 24 Jan 2023 11:55



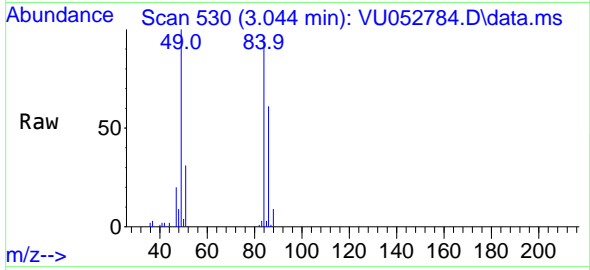
Tgt Ion: 76 Resp: 59467
 Ion Ratio Lower Upper
 76 100
 78 9.3 7.1 10.7





#15
 Methylene Chloride
 Concen: 2.542 ug/l
 RT: 3.044 min Scan# 51
 Delta R.T. -0.000 min
 Lab File: VU052784.D
 Acq: 24 Jan 2023 11:55

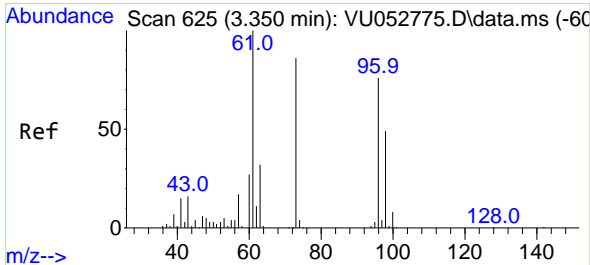
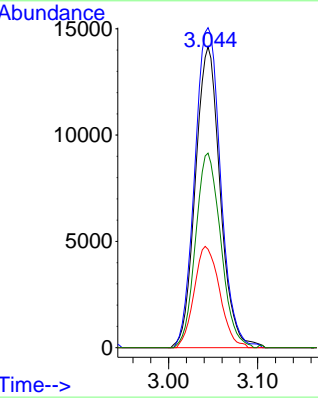
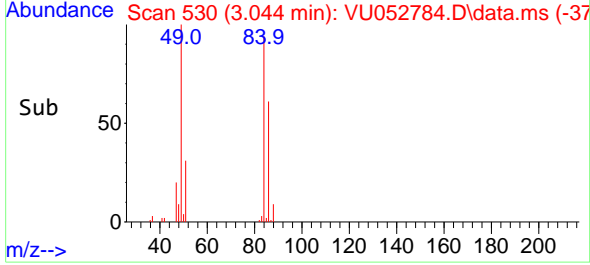
Instrument : MSVOA_U
 Client Sample Id : VU0124WBS02



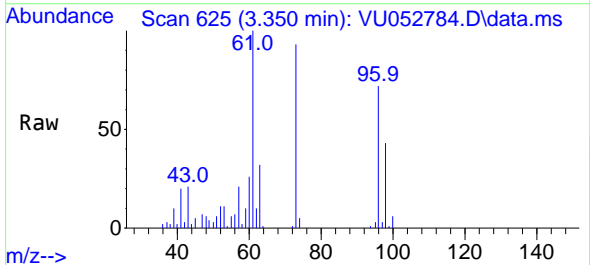
Tgt Ion: 84 Resp: 27314

Ion	Ratio	Lower	Upper
84	100		
49	106.3	86.7	130.1
51	32.7	0.0	66.8
86	64.7	51.5	77.3

Manual Integrations
APPROVED
 Reviewed By :Krupa Patel 01/27/2023
 Supervised By :Mahesh Dadoda 01/30/2023

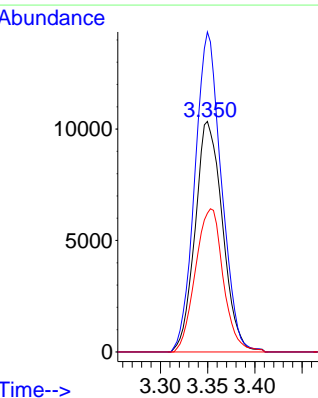
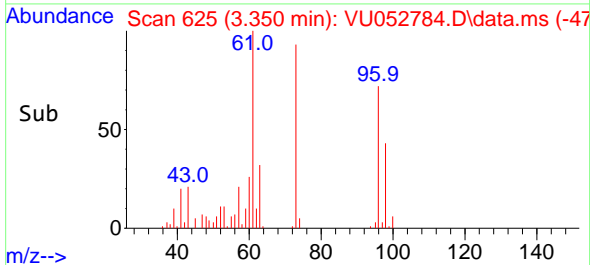


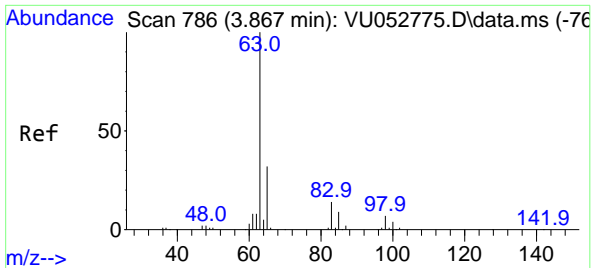
#16
 trans-1,2-Dichloroethene
 Concen: 2.107 ug/l
 RT: 3.350 min Scan# 625
 Delta R.T. -0.000 min
 Lab File: VU052784.D
 Acq: 24 Jan 2023 11:55



Tgt Ion: 96 Resp: 20854

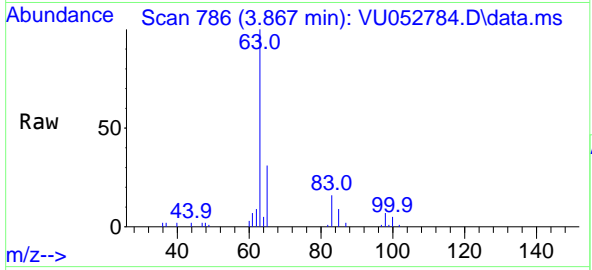
Ion	Ratio	Lower	Upper
96	100		
61	138.8	105.7	158.5
98	60.2	51.4	77.2





#17
 1,1-Dichloroethane
 Concen: 2.165 ug/l
 RT: 3.867 min Scan# 786
 Delta R.T. -0.000 min
 Lab File: VU052784.D
 Acq: 24 Jan 2023 11:55

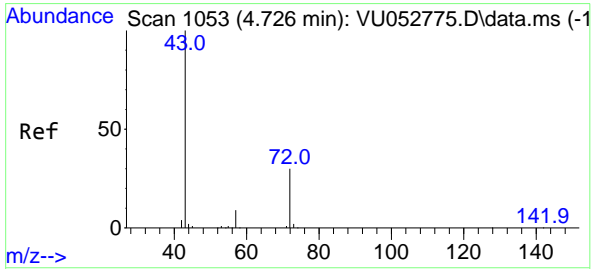
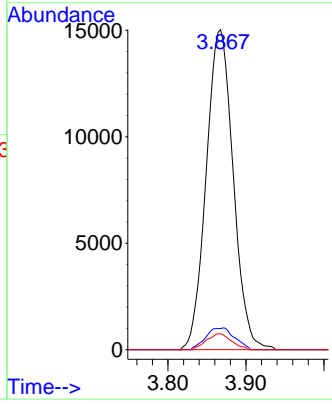
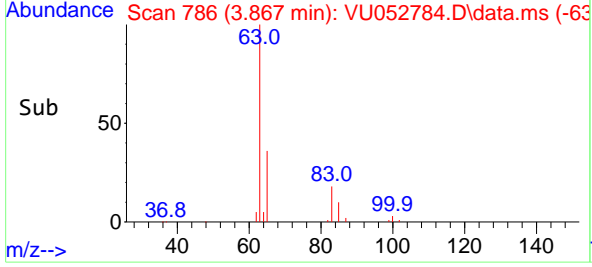
Instrument : MSVOA_U
 Client Sample Id : VU0124WBS02



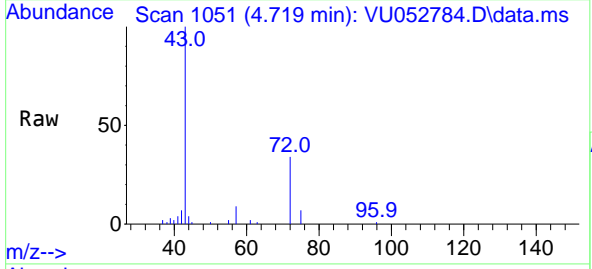
Tgt Ion: 63 Resp: 36194

Ion	Ratio	Lower	Upper
63	100		
98	6.6	3.8	11.2
100	5.0	2.2	6.6

Manual Integrations
APPROVED
 Reviewed By :Krupa Patel 01/27/2023
 Supervised By :Mahesh Dadoda 01/30/2023

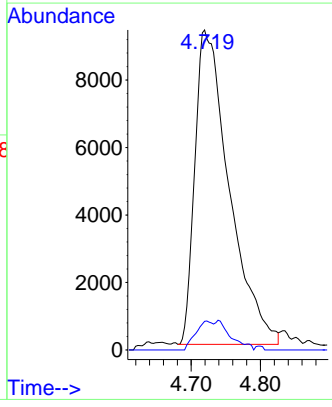
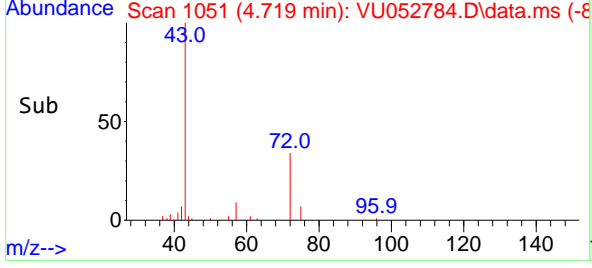


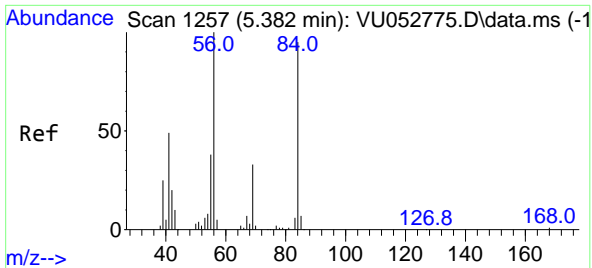
#18
 2-Butanone
 Concen: 10.315 ug/l
 RT: 4.719 min Scan# 1051
 Delta R.T. -0.006 min
 Lab File: VU052784.D
 Acq: 24 Jan 2023 11:55



Tgt Ion: 43 Resp: 32063

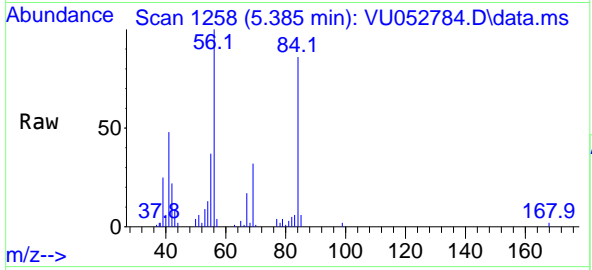
Ion	Ratio	Lower	Upper
43	100		
57	9.1	0.0	17.4





#19
 Cyclohexane
 Concen: 1.892 ug/l m
 RT: 5.385 min Scan# 1
 Delta R.T. 0.003 min
 Lab File: VU052784.D
 Acq: 24 Jan 2023 11:55

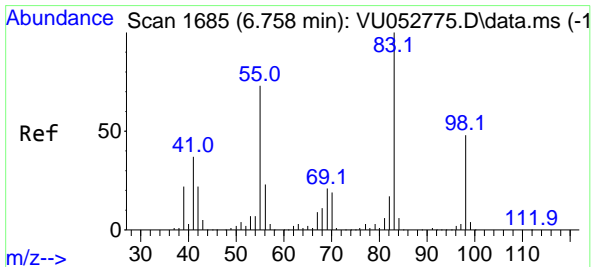
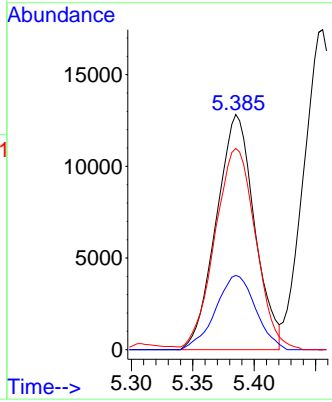
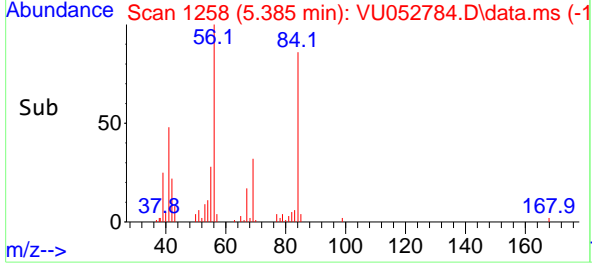
Instrument : MSVOA_U
 ClientSampleId : VU0124WBS02



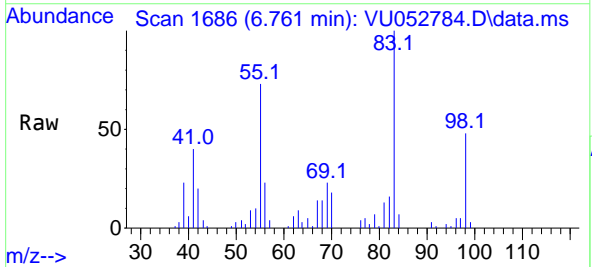
Tgt Ion: 56 Resp: 2781
 Ion Ratio Lower Upper
 56 100
 69 33.0 26.8 40.2
 84 89.7 77.0 115.6

Manual Integrations
APPROVED

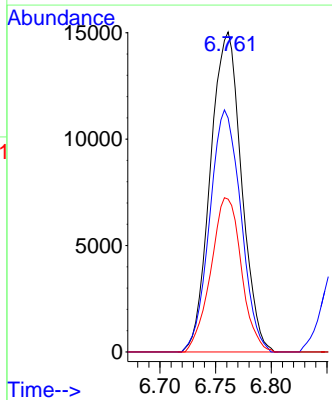
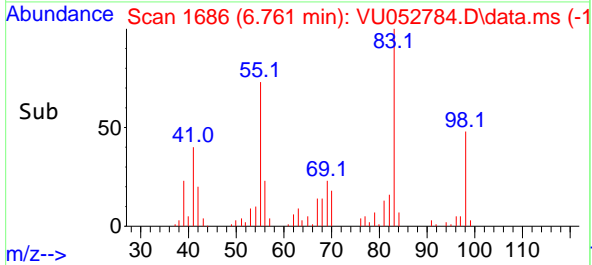
Reviewed By :Krupa Patel 01/27/2023
 Supervised By :Mahesh Dadoda 01/30/2023

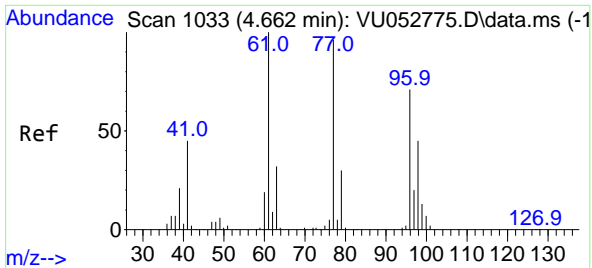


#20
 Methylcyclohexane
 Concen: 1.778 ug/l
 RT: 6.761 min Scan# 1686
 Delta R.T. 0.003 min
 Lab File: VU052784.D
 Acq: 24 Jan 2023 11:55



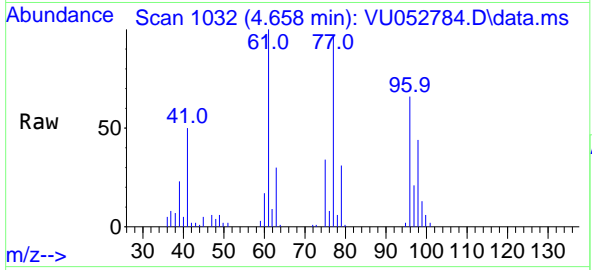
Tgt Ion: 83 Resp: 29159
 Ion Ratio Lower Upper
 83 100
 55 76.0 58.7 88.1
 98 47.5 39.4 59.2





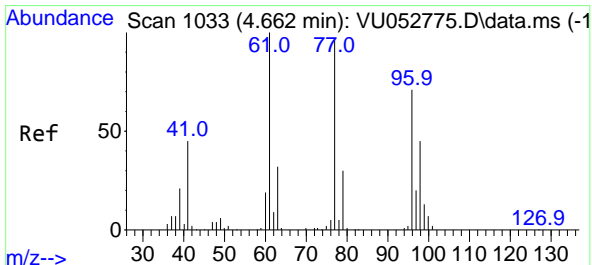
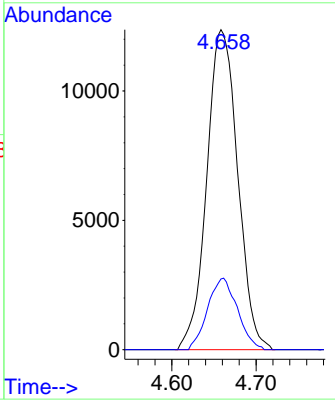
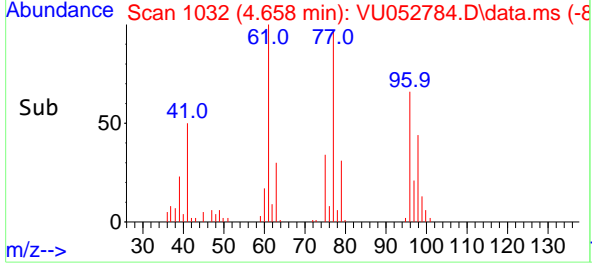
#21
 2,2-Dichloropropane
 Concen: 2.034 ug/l
 RT: 4.658 min Scan# 1032
 Delta R.T. -0.003 min
 Lab File: VU052784.D
 Acq: 24 Jan 2023 11:55

Instrument : MSVOA_U
 Client Sample Id : VU0124WBS02

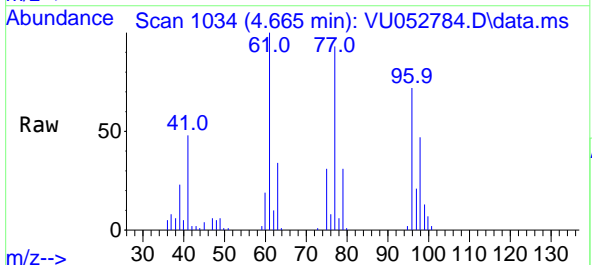


Tgt Ion: 77 Resp: 31578
 Ion Ratio Lower Upper
 77 100
 97 21.5 16.8 25.2

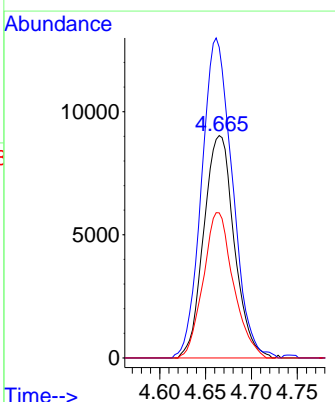
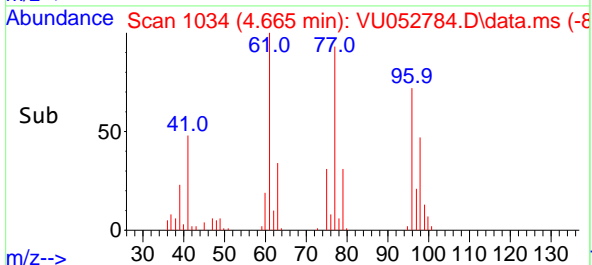
Manual Integrations
APPROVED
 Reviewed By :Krupa Patel 01/27/2023
 Supervised By :Mahesh Dadoda 01/30/2023

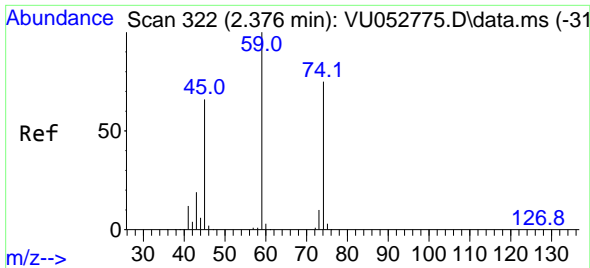


#22
 cis-1,2-Dichloroethene
 Concen: 2.017 ug/l
 RT: 4.665 min Scan# 1034
 Delta R.T. 0.003 min
 Lab File: VU052784.D
 Acq: 24 Jan 2023 11:55



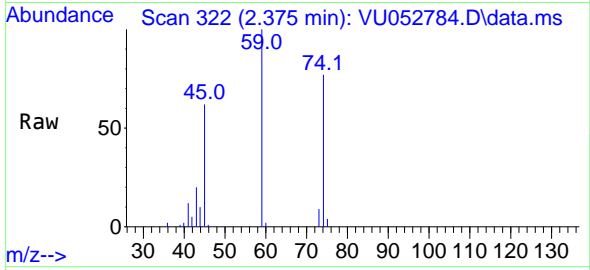
Tgt Ion: 96 Resp: 20867
 Ion Ratio Lower Upper
 96 100
 61 145.4 0.0 353.3
 98 64.6 32.6 97.7





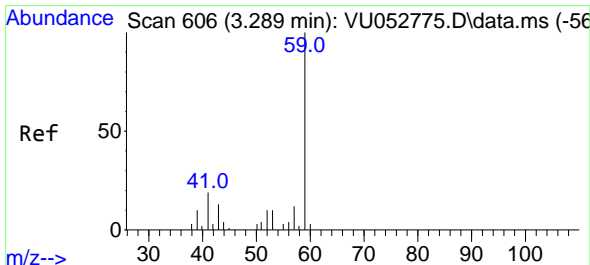
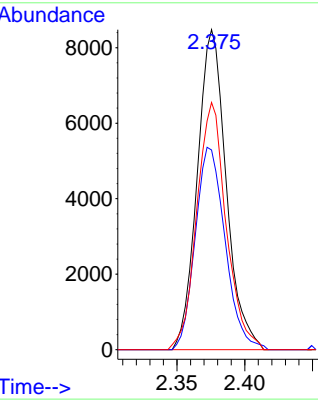
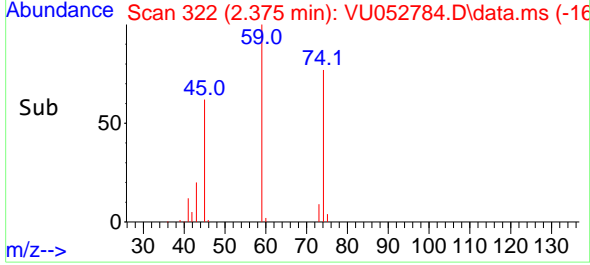
#23
 Diethyl Ether
 Concen: 1.999 ug/l
 RT: 2.375 min Scan# 31
 Delta R.T. -0.000 min
 Lab File: VU052784.D
 Acq: 24 Jan 2023 11:55

Instrument : MSVOA_U
 Client Sample Id : VU0124WBS02

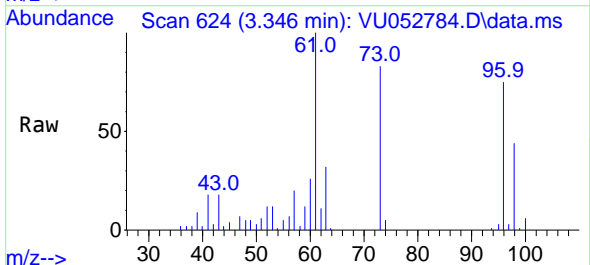


Tgt Ion: 59 Resp: 1257
 Ion Ratio Lower Upper
 59 100
 45 65.3 52.1 78.1
 74 78.5 61.6 92.4

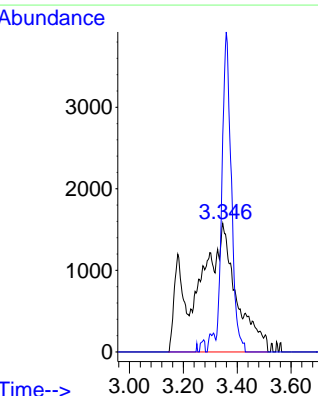
Manual Integrations
APPROVED
 Reviewed By :Krupa Patel 01/27/2023
 Supervised By :Mahesh Dadoda 01/30/2023

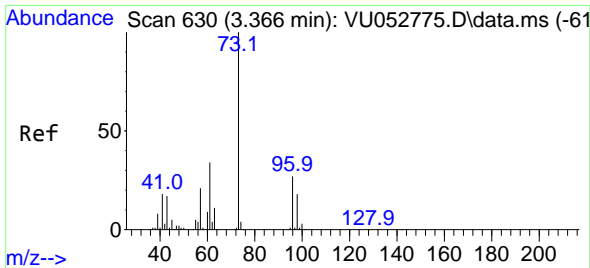


#24
 tert-Butyl Alcohol
 Concen: 21.163 ug/l m
 RT: 3.346 min Scan# 624
 Delta R.T. 0.058 min
 Lab File: VU052784.D
 Acq: 24 Jan 2023 11:55



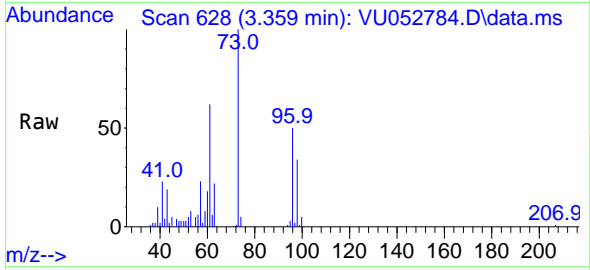
Tgt Ion: 59 Resp: 16028
 Ion Ratio Lower Upper
 59 100
 57 0.0 45.8 68.8#





#25
 Methyl tert-Butyl Ether
 Concen: 2.010 ug/l
 RT: 3.359 min Scan# 61
 Delta R.T. -0.006 min
 Lab File: VU052784.D
 Acq: 24 Jan 2023 11:55

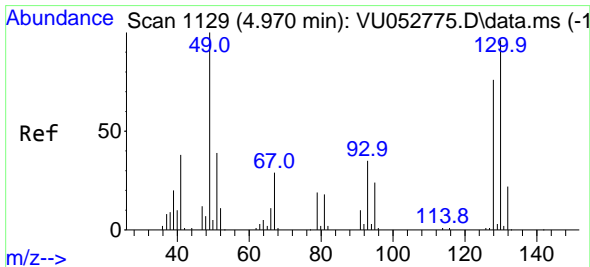
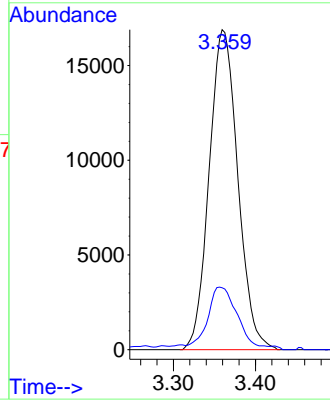
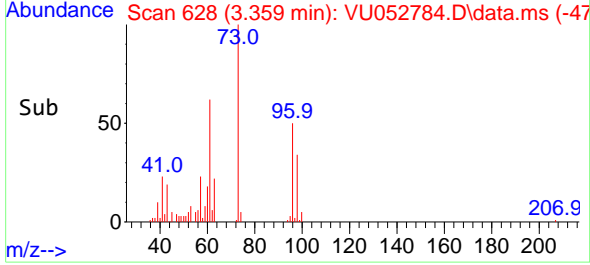
Instrument :
 MSVOA_U
 ClientSampleId :
 VU0124WBS02



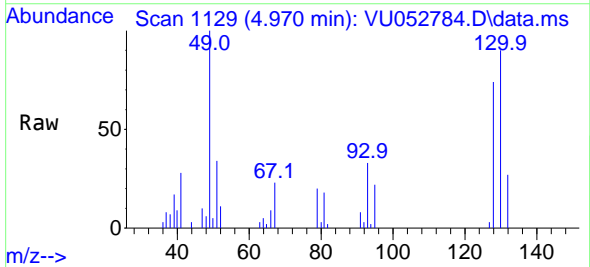
Tgt Ion: 73 Resp: 41019
 Ion Ratio Lower Upper
 73 100
 43 17.9 15.3 22.9

Manual Integrations
APPROVED

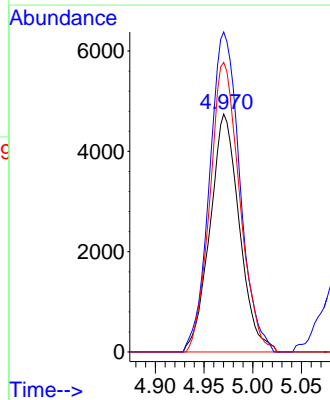
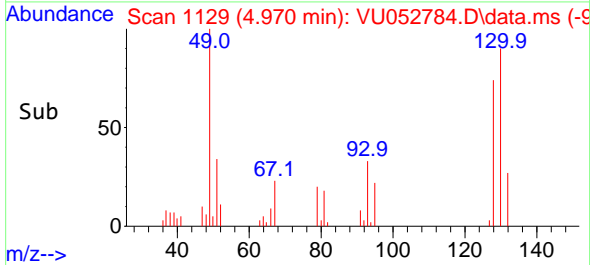
Reviewed By :Krupa Patel 01/27/2023
 Supervised By :Mahesh Dadoda 01/30/2023

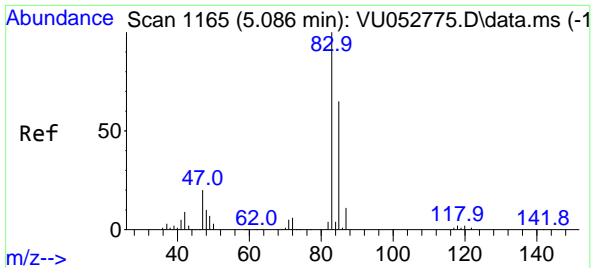


#26
 Bromochloromethane
 Concen: 2.064 ug/l
 RT: 4.970 min Scan# 1129
 Delta R.T. -0.000 min
 Lab File: VU052784.D
 Acq: 24 Jan 2023 11:55



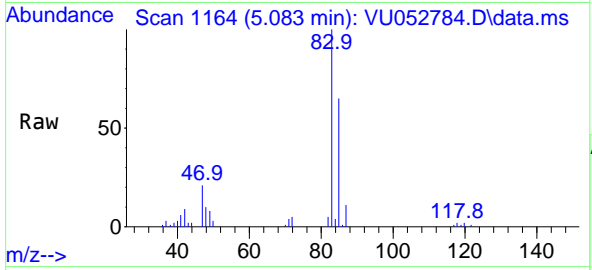
Tgt Ion:128 Resp: 9968
 Ion Ratio Lower Upper
 128 100
 49 138.4 0.0 265.0
 130 122.9 100.7 151.1





#27
 Chloroform
 Concen: 2.184 ug/l
 RT: 5.083 min Scan# 1164
 Delta R.T. -0.003 min
 Lab File: VU052784.D
 Acq: 24 Jan 2023 11:55

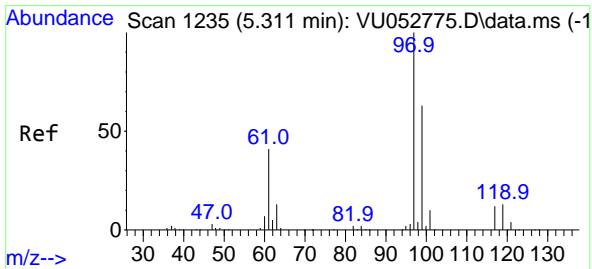
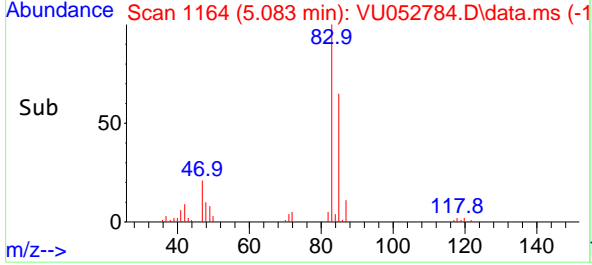
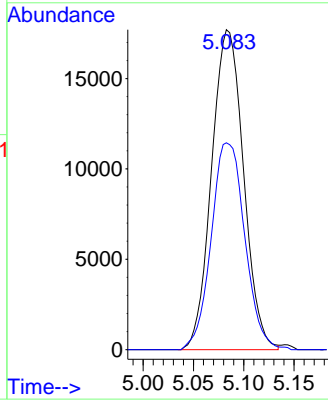
Instrument : MSVOA_U
 Client Sample Id : VU0124WBS02



Tgt Ion: 83 Resp: 39130
 Ion Ratio Lower Upper
 83 100
 85 64.7 0.0 130.6

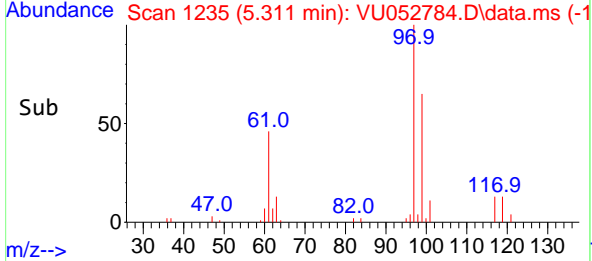
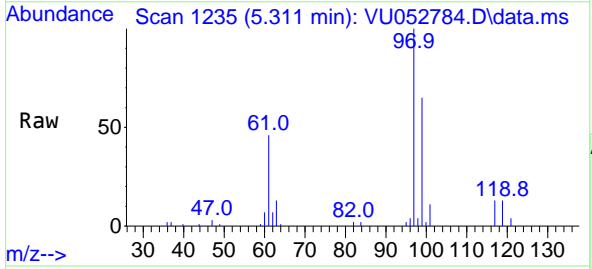
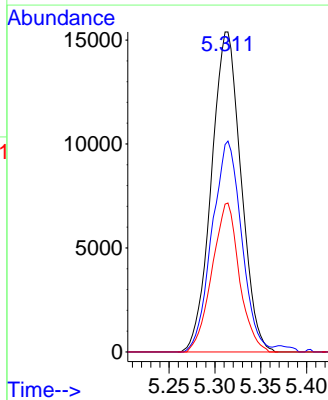
Manual Integrations
APPROVED

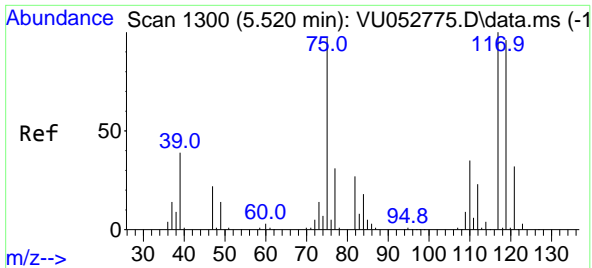
Reviewed By :Krupa Patel 01/27/2023
 Supervised By :Mahesh Dadoda 01/30/2023



#28
 1,1,1-Trichloroethane
 Concen: 2.084 ug/l
 RT: 5.311 min Scan# 1235
 Delta R.T. -0.000 min
 Lab File: VU052784.D
 Acq: 24 Jan 2023 11:55

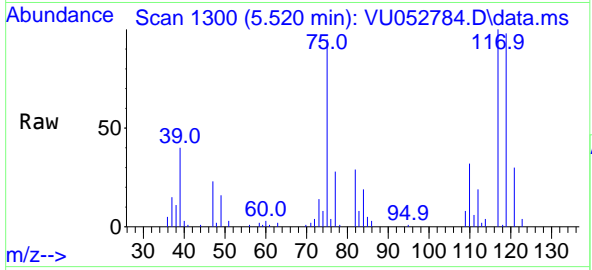
Tgt Ion: 97 Resp: 34480
 Ion Ratio Lower Upper
 97 100
 99 66.3 31.9 95.5
 61 43.1 20.8 62.2





#29
 1,1-Dichloropropene
 Concen: 1.908 ug/l
 RT: 5.520 min Scan# 1300
 Delta R.T. -0.000 min
 Lab File: VU052784.D
 Acq: 24 Jan 2023 11:55

Instrument : MSVOA_U
 Client Sample Id : VU0124WBS02

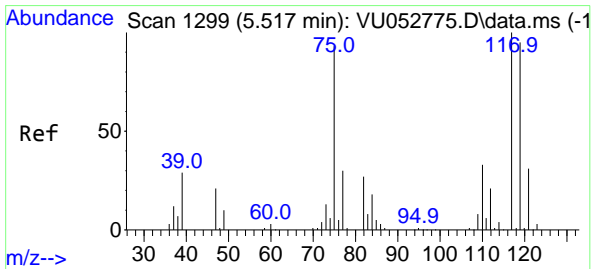
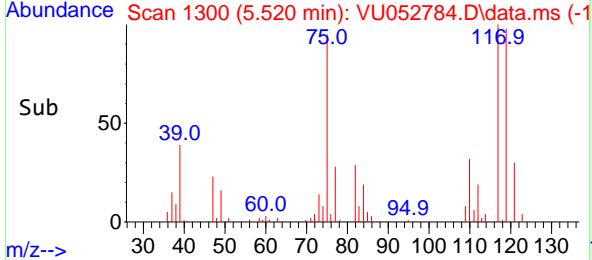
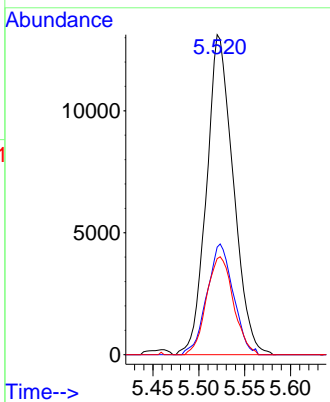


Tgt Ion: 75 Resp: 26619

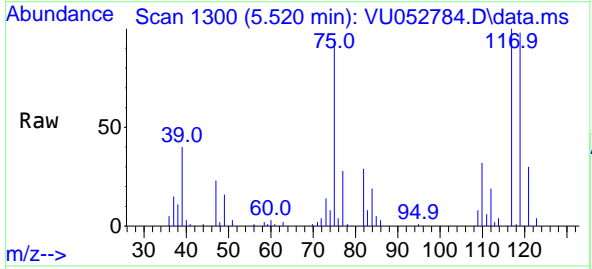
Ion	Ratio	Lower	Upper
75	100		
110	34.1	17.4	52.2
77	30.8	24.8	37.2

Manual Integrations
 APPROVED

Reviewed By :Krupa Patel 01/27/2023
 Supervised By :Mahesh Dadoda 01/30/2023

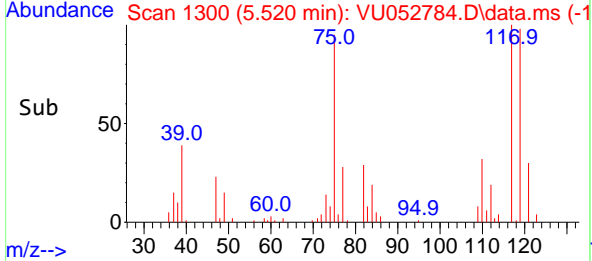
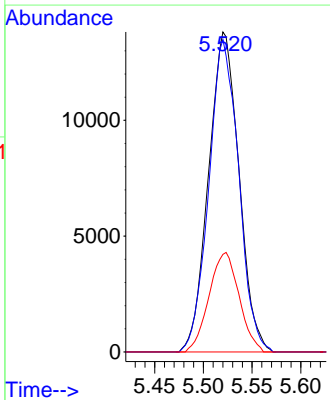


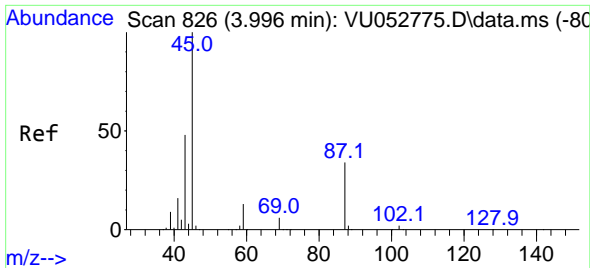
#30
 Carbon Tetrachloride
 Concen: 1.997 ug/l
 RT: 5.520 min Scan# 1300
 Delta R.T. 0.003 min
 Lab File: VU052784.D
 Acq: 24 Jan 2023 11:55



Tgt Ion:117 Resp: 29979

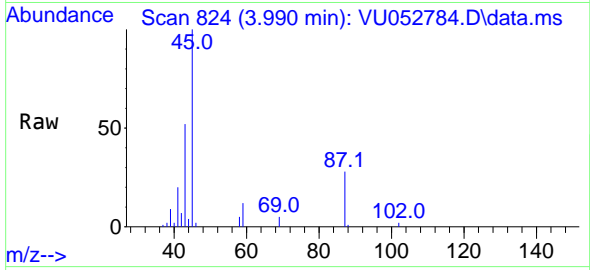
Ion	Ratio	Lower	Upper
117	100		
119	97.6	76.4	114.6
121	30.5	25.0	37.6





#31
 Isopropyl Ether
 Concen: 1.941 ug/l
 RT: 3.990 min Scan# 81
 Delta R.T. -0.006 min
 Lab File: VU052784.D
 Acq: 24 Jan 2023 11:55

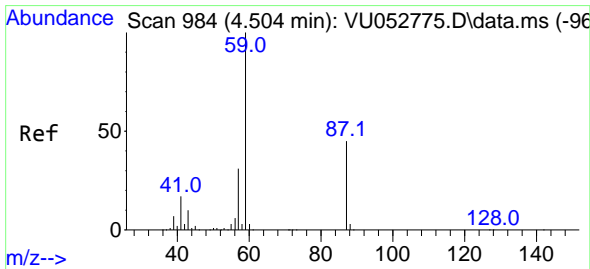
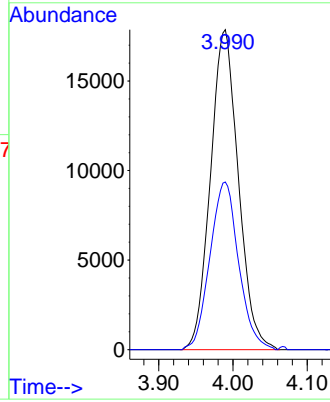
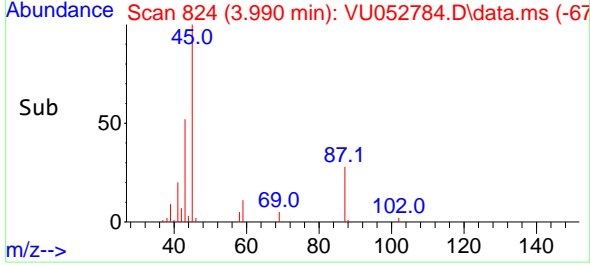
Instrument :
 MSVOA_U
 ClientSampleId :
 VU0124WBS02



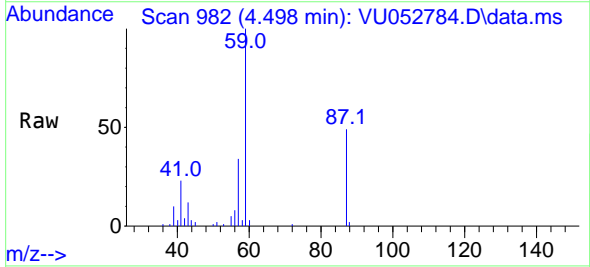
Tgt Ion: 45 Resp: 46640
 Ion Ratio Lower Upper
 45 100
 43 54.0 24.5 73.5

Manual Integrations
APPROVED

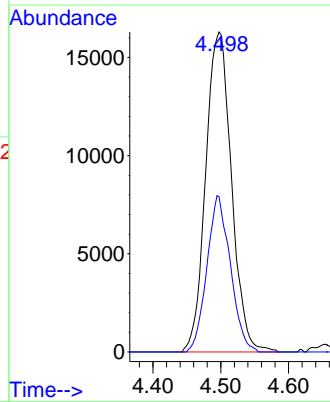
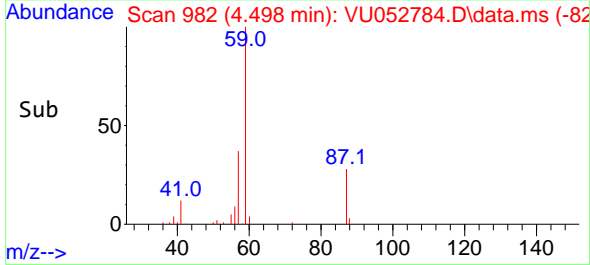
Reviewed By :Krupa Patel 01/27/2023
 Supervised By :Mahesh Dadoda 01/30/2023

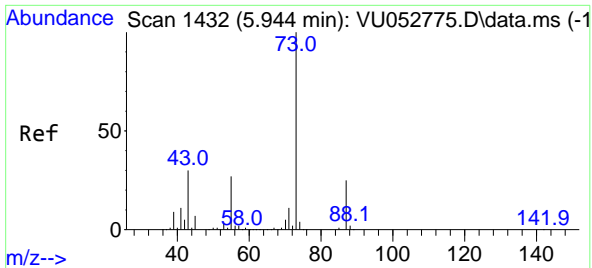


#32
 Ethyl-t-butyl ether
 Concen: 1.921 ug/l
 RT: 4.498 min Scan# 982
 Delta R.T. -0.006 min
 Lab File: VU052784.D
 Acq: 24 Jan 2023 11:55



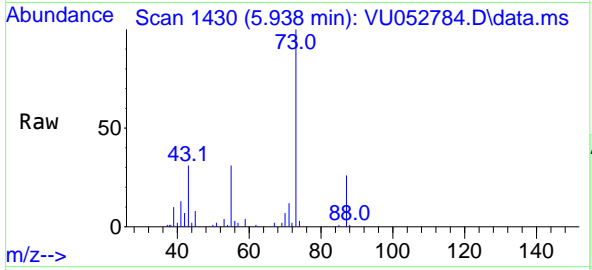
Tgt Ion: 59 Resp: 43091
 Ion Ratio Lower Upper
 59 100
 87 44.4 36.2 54.2





#33
 Tert-Amyl methyl ether
 Concen: 1.862 ug/l
 RT: 5.938 min Scan# 1432
 Delta R.T. -0.006 min
 Lab File: VU052784.D
 Acq: 24 Jan 2023 11:55

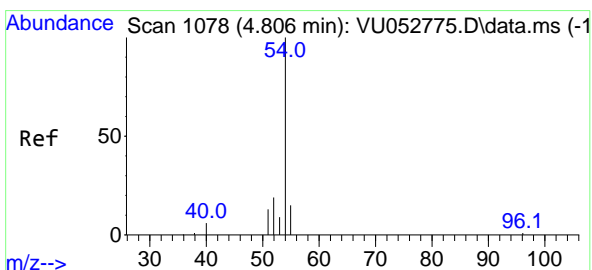
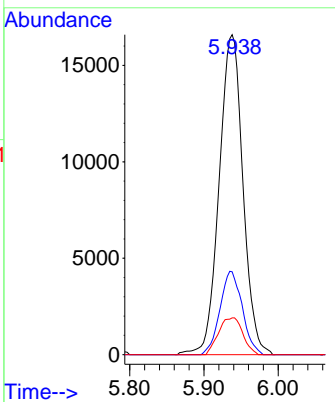
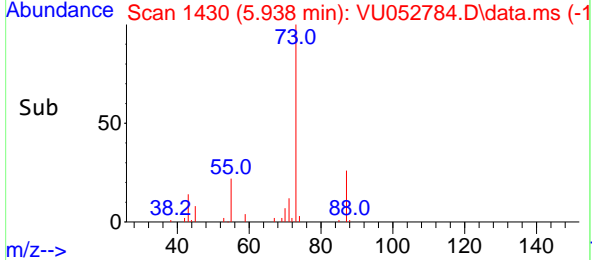
Instrument : MSVOA_U
 Client Sample Id : VU0124WBS02



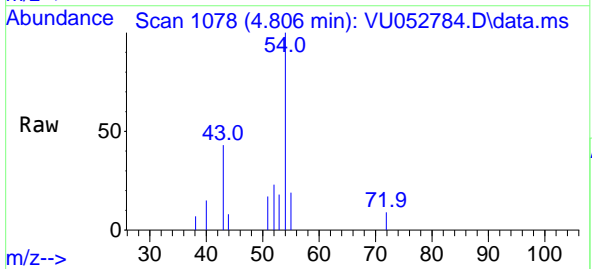
Tgt Ion: 73 Resp: 36930

Ion	Ratio	Lower	Upper
73	100		
87	24.4	20.1	30.1
71	11.8	9.2	13.8

Manual Integrations
APPROVED
 Reviewed By :Krupa Patel 01/27/2023
 Supervised By :Mahesh Dadoda 01/30/2023

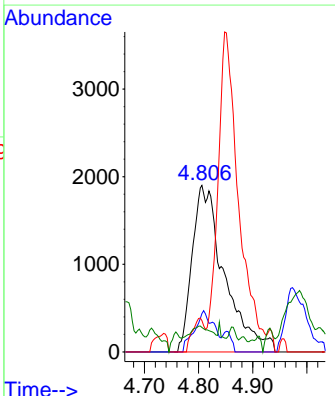
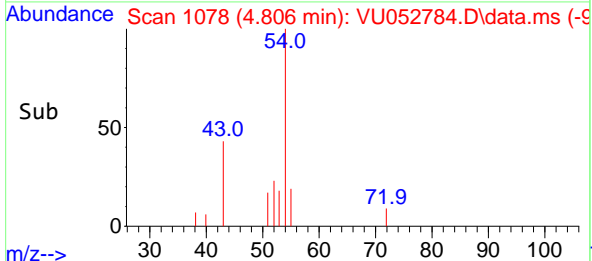


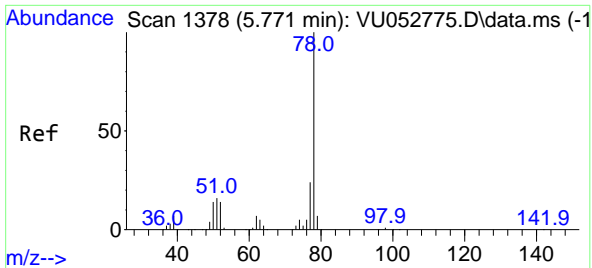
#34
 Propionitrile
 Concen: 11.036 ug/l m
 RT: 4.806 min Scan# 1078
 Delta R.T. -0.000 min
 Lab File: VU052784.D
 Acq: 24 Jan 2023 11:55



Tgt Ion: 54 Resp: 7854

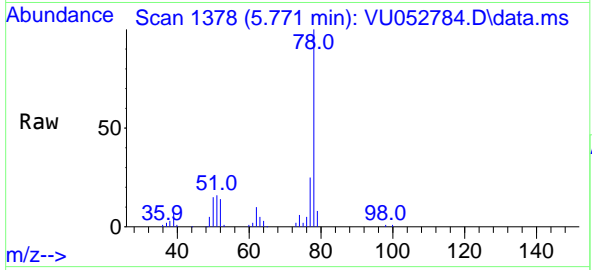
Ion	Ratio	Lower	Upper
54	100		
52	15.0	16.9	25.3#
55	7.6	118.6	178.0#
40	6.6	2.8	4.2#





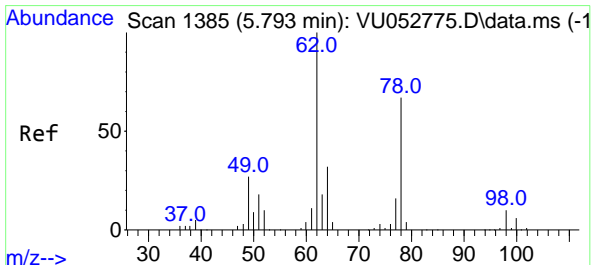
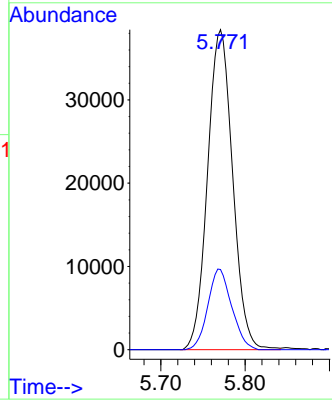
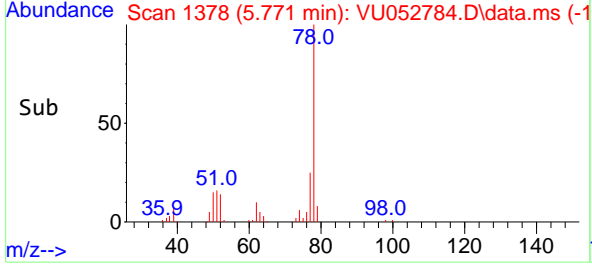
#35
Benzene
Concen: 1.963 ug/l
RT: 5.771 min Scan# 1378
Delta R.T. -0.000 min
Lab File: VU052784.D
Acq: 24 Jan 2023 11:55

Instrument : MSVOA_U
Client Sample Id : VU0124WBS02

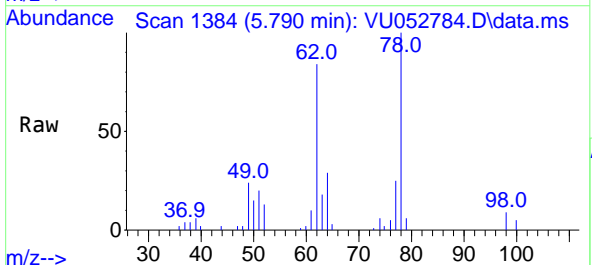


Tgt Ion: 78 Resp: 7945
Ion Ratio Lower Upper
78 100
77 25.0 19.0 28.4

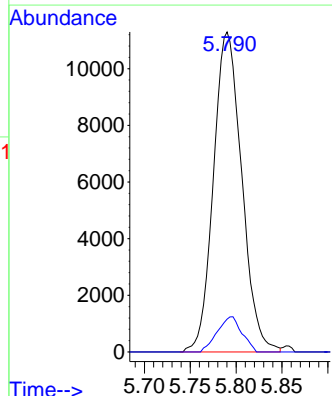
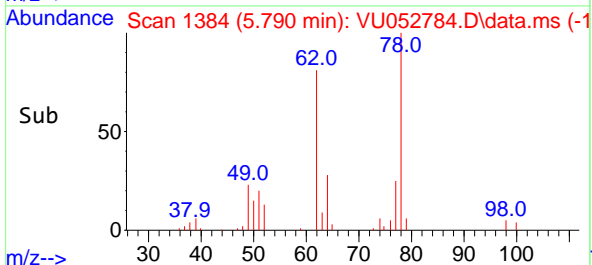
Manual Integrations
APPROVED
Reviewed By :Krupa Patel 01/27/2023
Supervised By :Mahesh Dadoda 01/30/2023

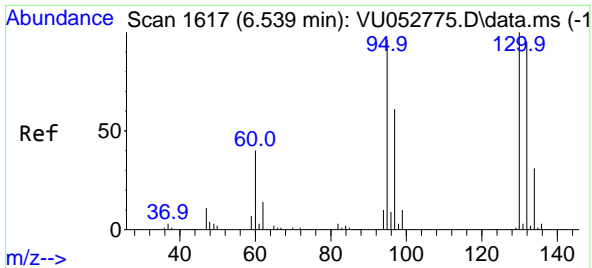


#36
1,2-Dichloroethane
Concen: 1.994 ug/l
RT: 5.790 min Scan# 1384
Delta R.T. -0.003 min
Lab File: VU052784.D
Acq: 24 Jan 2023 11:55



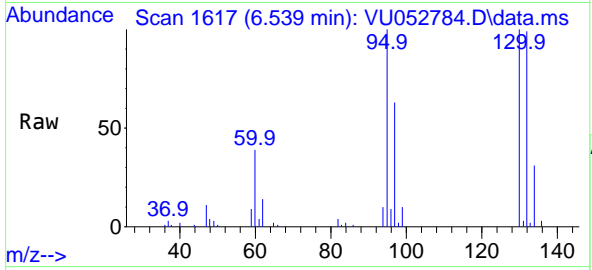
Tgt Ion: 62 Resp: 24241
Ion Ratio Lower Upper
62 100
98 9.5 7.5 11.3





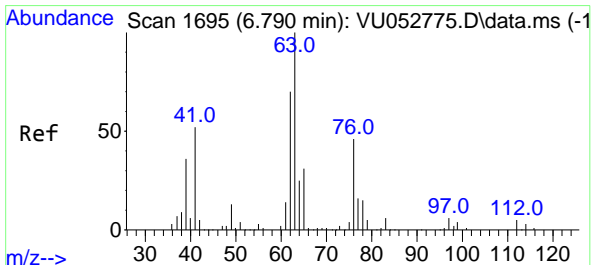
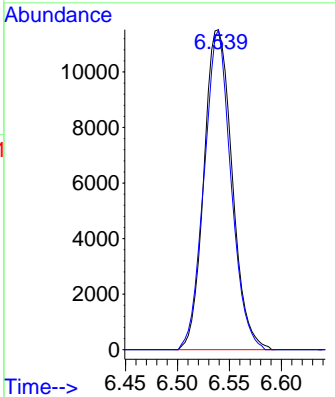
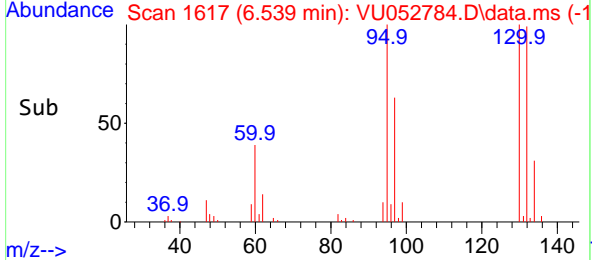
#37
 Trichloroethene
 Concen: 1.975 ug/l
 RT: 6.539 min Scan# 1617
 Delta R.T. -0.000 min
 Lab File: VU052784.D
 Acq: 24 Jan 2023 11:55

Instrument : MSVOA_U
 Client Sample Id : VU0124WBS02

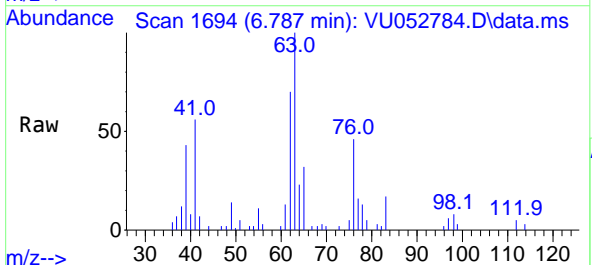


Tgt Ion: 130 Resp: 21790
 Ion Ratio Lower Upper
 130 100
 95 99.8 76.6 114.8

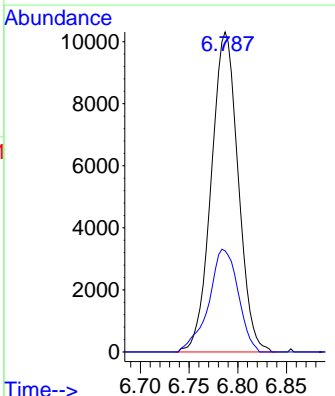
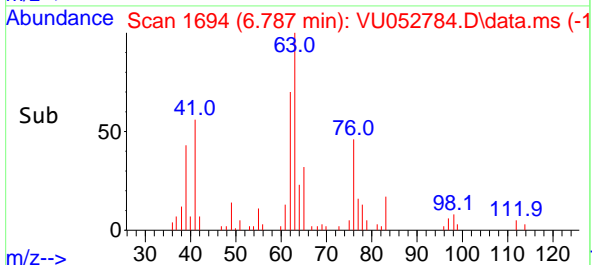
Manual Integrations
APPROVED
 Reviewed By :Krupa Patel 01/27/2023
 Supervised By :Mahesh Dadoda 01/30/2023

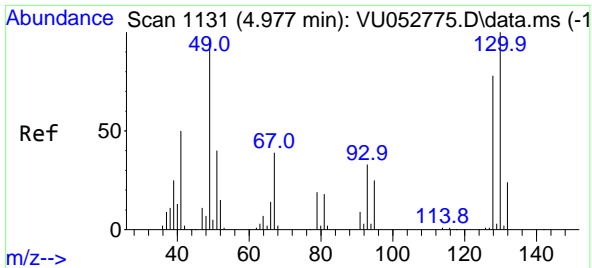


#38
 1,2-Dichloropropane
 Concen: 1.928 ug/l
 RT: 6.787 min Scan# 1694
 Delta R.T. -0.003 min
 Lab File: VU052784.D
 Acq: 24 Jan 2023 11:55



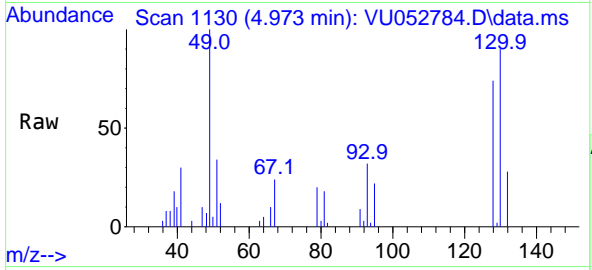
Tgt Ion: 63 Resp: 19800
 Ion Ratio Lower Upper
 63 100
 65 31.6 24.6 36.8





#39
 Methacrylonitrile
 Concen: 1.734 ug/l
 RT: 4.973 min Scan# 1130
 Delta R.T. -0.003 min
 Lab File: VU052784.D
 Acq: 24 Jan 2023 11:55

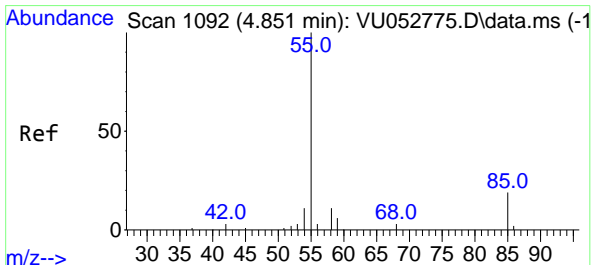
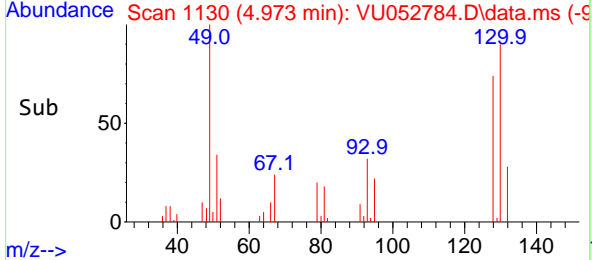
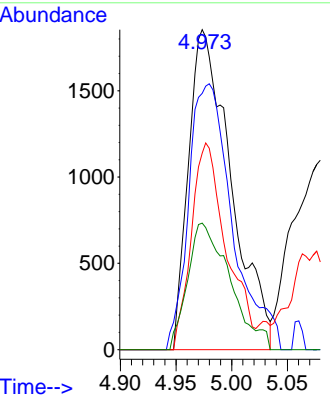
Instrument : MSVOA_U
 Client Sample Id : VU0124WBS02



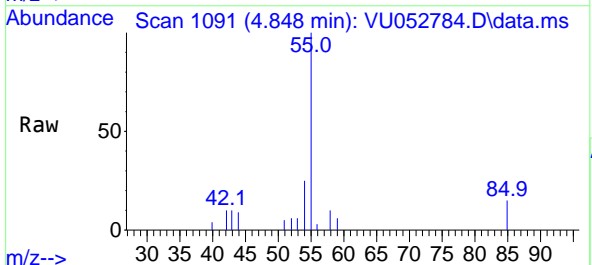
Tgt Ion: 41 Resp: 4930

Ion	Ratio	Lower	Upper
41	100		
67	85.5	64.9	97.3
39	53.5	41.7	62.5
52	39.3	26.0	39.0#

Manual Integrations
APPROVED
 Reviewed By :Krupa Patel 01/27/2023
 Supervised By :Mahesh Dadoda 01/30/2023

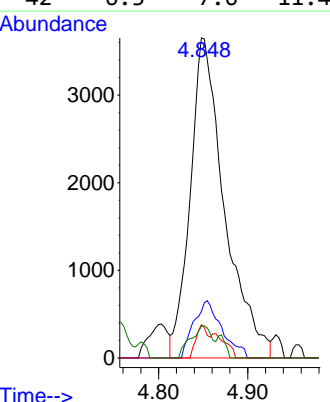
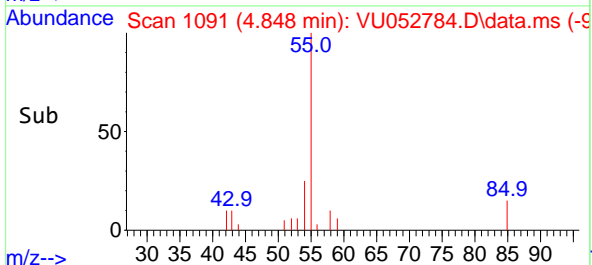


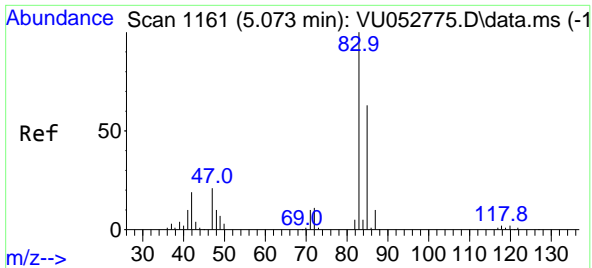
#40
 Methyl acrylate
 Concen: 1.935 ug/l
 RT: 4.848 min Scan# 1091
 Delta R.T. -0.003 min
 Lab File: VU052784.D
 Acq: 24 Jan 2023 11:55



Tgt Ion: 55 Resp: 9748

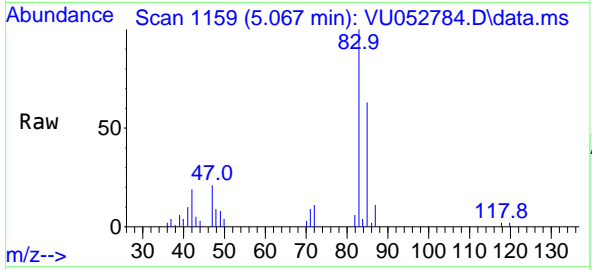
Ion	Ratio	Lower	Upper
55	100		
85	14.7	14.4	21.6
58	3.7	7.3	10.9#
42	6.3	7.6	11.4#





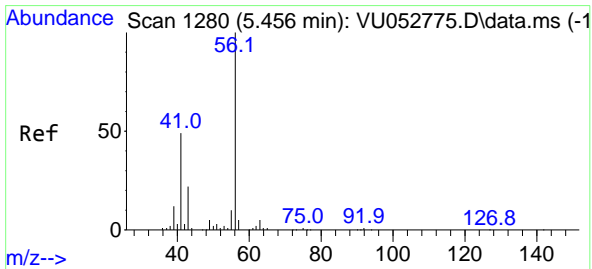
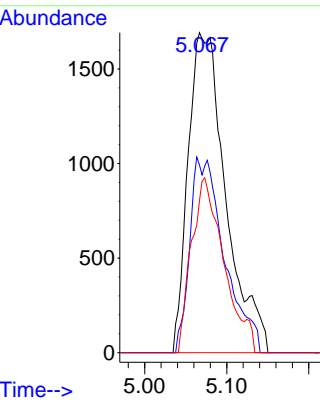
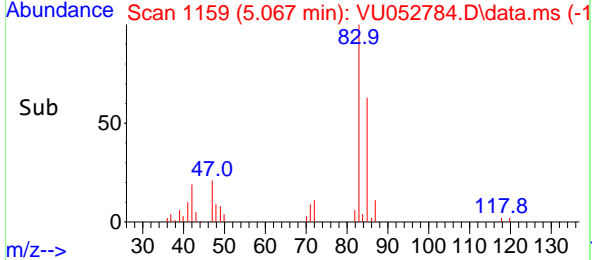
#41
 Tetrahydrofuran
 Concen: 3.816 ug/l m
 RT: 5.067 min Scan# 1161
 Delta R.T. -0.006 min
 Lab File: VU052784.D
 Acq: 24 Jan 2023 11:55

Instrument : MSVOA_U
 Client Sample Id : VU0124WBS02

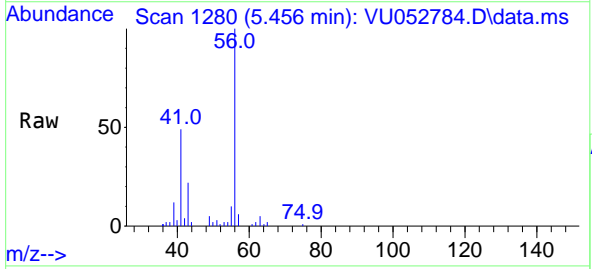


Tgt Ion: 42 Resp: 539
 Ion Ratio Lower Upper
 42 100
 72 21.1 49.1 73.7
 71 47.1 43.8 65.6

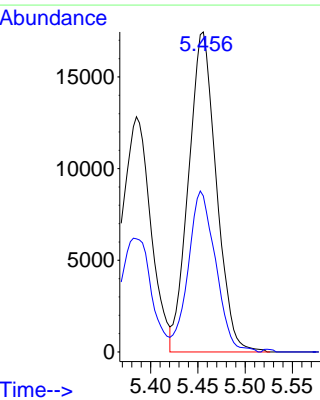
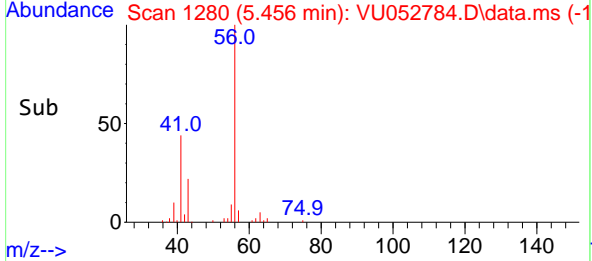
Manual Integrations
APPROVED
 Reviewed By :Krupa Patel 01/27/2023
 Supervised By :Mahesh Dadoda 01/30/2023

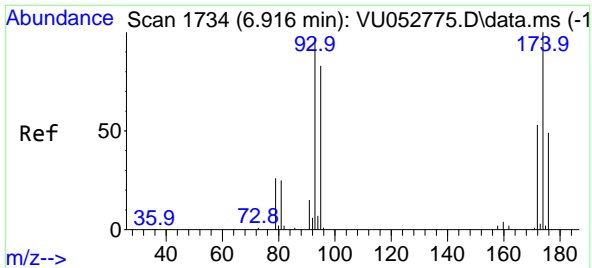


#42
 1-Chlorobutane
 Concen: 1.996 ug/l
 RT: 5.456 min Scan# 1280
 Delta R.T. -0.000 min
 Lab File: VU052784.D
 Acq: 24 Jan 2023 11:55



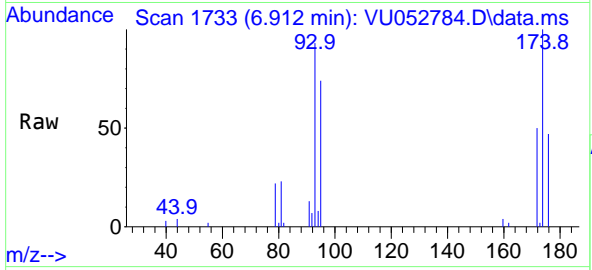
Tgt Ion: 56 Resp: 35604
 Ion Ratio Lower Upper
 56 100
 41 49.7 24.5 73.5





#43
 Dibromomethane
 Concen: 1.937 ug/l
 RT: 6.912 min Scan# 1733
 Delta R.T. -0.003 min
 Lab File: VU052784.D
 Acq: 24 Jan 2023 11:55

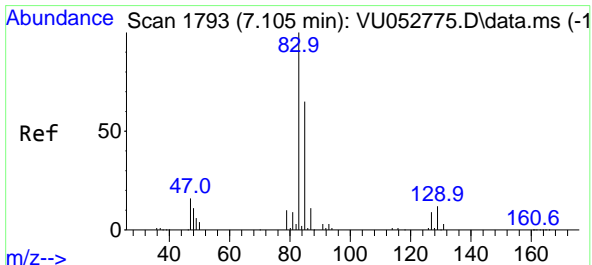
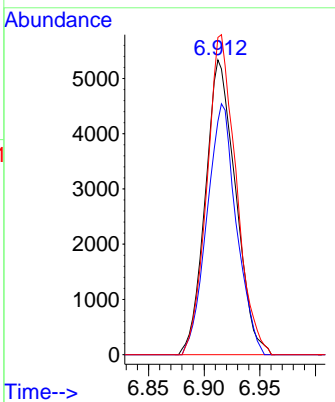
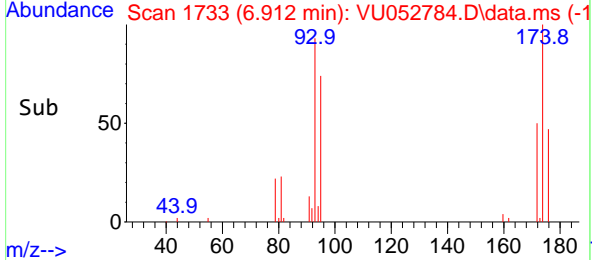
Instrument : MSVOA_U
 Client Sample Id : VU0124WBS02



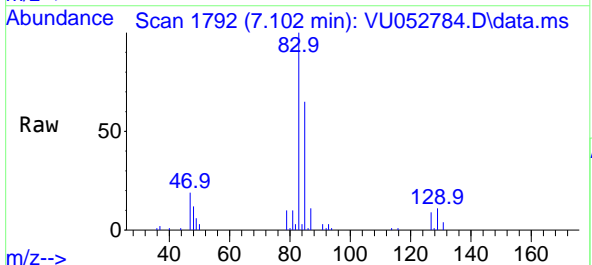
Tgt Ion: 93 Resp: 10069

Ion	Ratio	Lower	Upper
93	100		
95	82.9	67.0	100.6
174	105.0	82.2	123.4

Manual Integrations
APPROVED
 Reviewed By :Krupa Patel 01/27/2023
 Supervised By :Mahesh Dadoda 01/30/2023

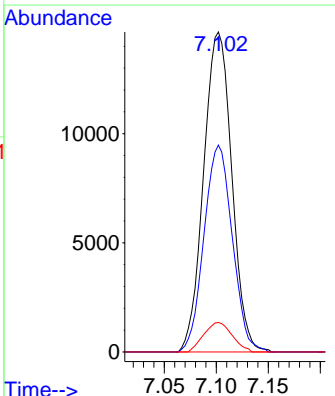
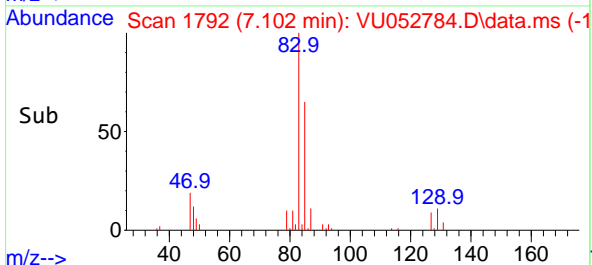


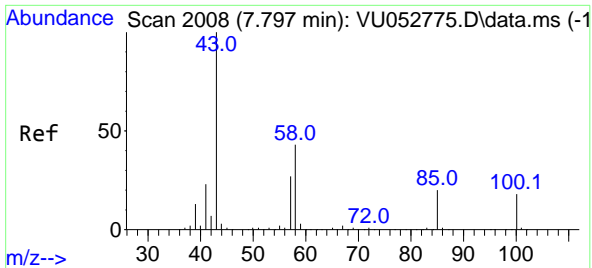
#44
 Bromodichloromethane
 Concen: 1.960 ug/l
 RT: 7.102 min Scan# 1792
 Delta R.T. -0.003 min
 Lab File: VU052784.D
 Acq: 24 Jan 2023 11:55



Tgt Ion: 83 Resp: 27645

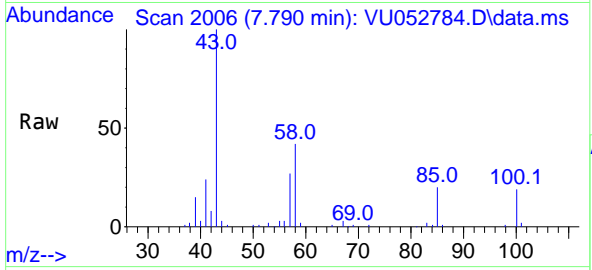
Ion	Ratio	Lower	Upper
83	100		
85	64.7	52.1	78.1
127	9.2	7.2	10.8





#45
 4-Methyl-2-Pentanone
 Concen: 8.898 ug/l
 RT: 7.790 min Scan# 2006
 Delta R.T. -0.006 min
 Lab File: VU052784.D
 Acq: 24 Jan 2023 11:55

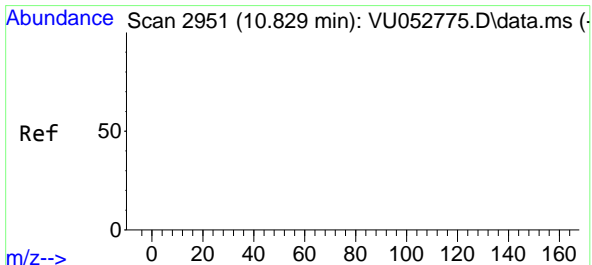
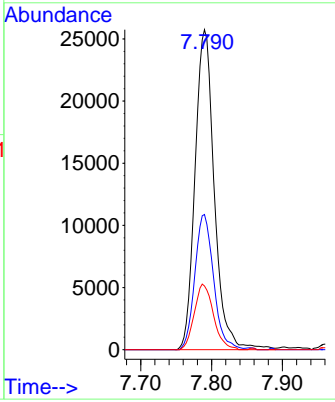
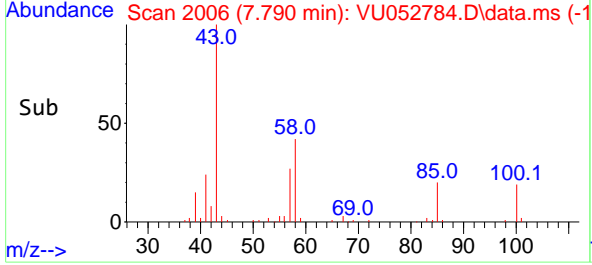
Instrument : MSVOA_U
 ClientSampleId : VU0124WBS02



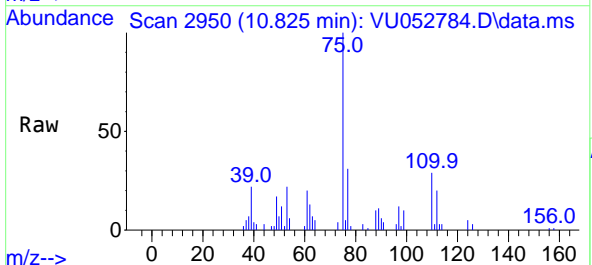
Tgt Ion: 43 Resp: 48604

Ion	Ratio	Lower	Upper
43	100		
58	41.1	21.7	65.1
85	20.4	16.2	24.4

Manual Integrations
APPROVED
 Reviewed By :Krupa Patel 01/27/2023
 Supervised By :Mahesh Dadoda 01/30/2023

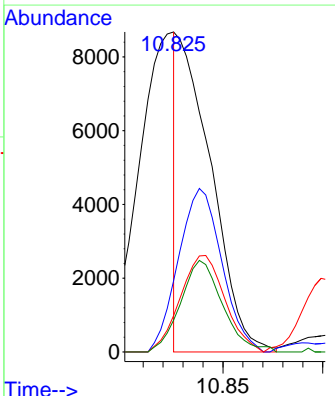
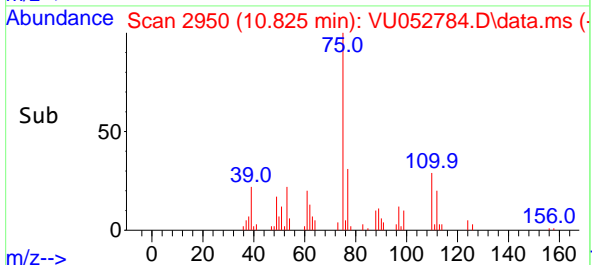


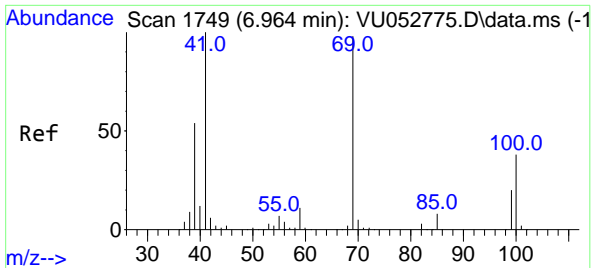
#46
 t-1,4-Dichloro-2-butene
 Concen: 3.530 ug/l m
 RT: 10.825 min Scan# 2950
 Delta R.T. -0.003 min
 Lab File: VU052784.D
 Acq: 24 Jan 2023 11:55



Tgt Ion: 75 Resp: 10110

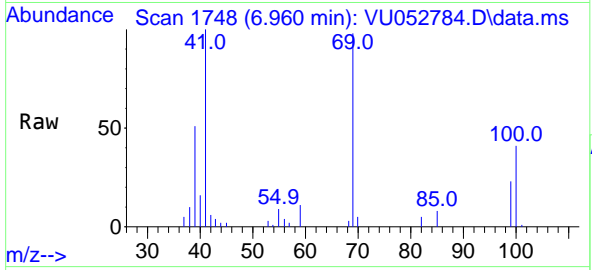
Ion	Ratio	Lower	Upper
75	100		
53	66.3	57.0	85.4
89	40.2	41.1	61.7#
88	35.9	32.3	48.5





#47
 Methyl methacrylate
 Concen: 3.621 ug/l
 RT: 6.960 min Scan# 1749
 Delta R.T. -0.003 min
 Lab File: VU052784.D
 Acq: 24 Jan 2023 11:55

Instrument : MSVOA_U
 ClientSampleId : VU0124WBS02

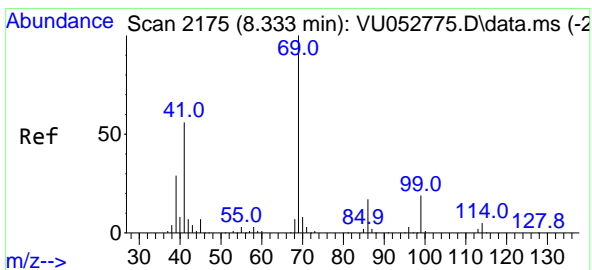
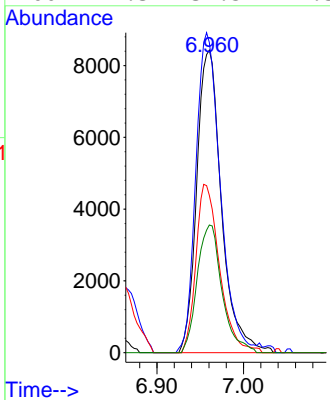
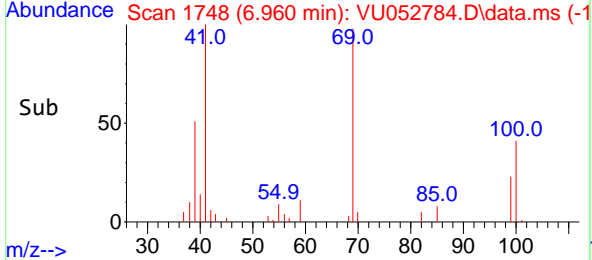


Tgt Ion: 69 Resp: 16729

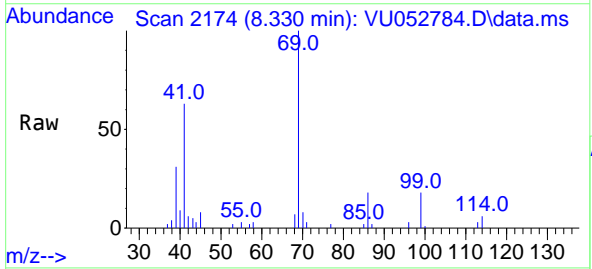
Ion	Ratio	Lower	Upper
69	100		
41	105.4	0.0	201.8
39	53.2	44.0	66.0
100	42.3	31.5	47.3

Manual Integrations
 APPROVED

Reviewed By :Krupa Patel 01/27/2023
 Supervised By :Mahesh Dadoda 01/30/2023

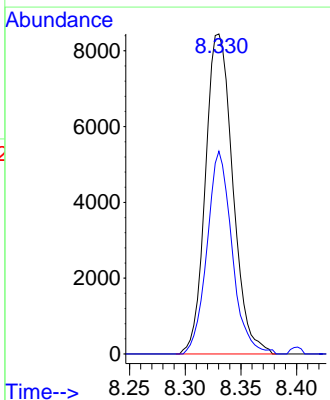
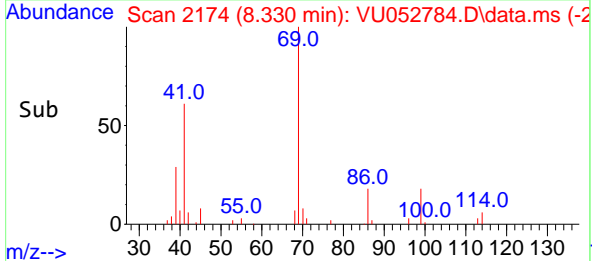


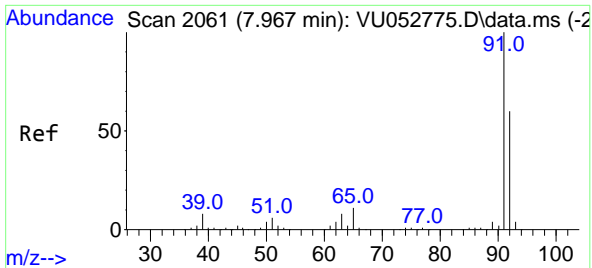
#48
 Ethyl methacrylate
 Concen: 1.724 ug/l
 RT: 8.330 min Scan# 2174
 Delta R.T. -0.003 min
 Lab File: VU052784.D
 Acq: 24 Jan 2023 11:55



Tgt Ion: 69 Resp: 14442

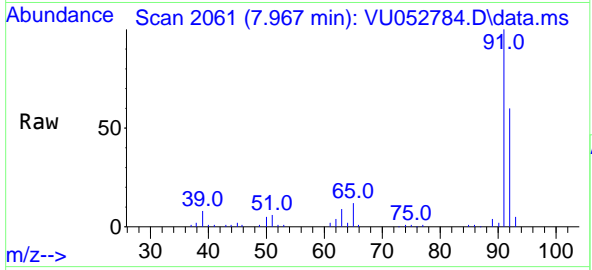
Ion	Ratio	Lower	Upper
69	100		
41	57.9	28.1	84.4





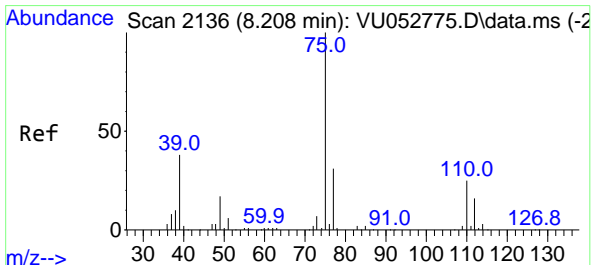
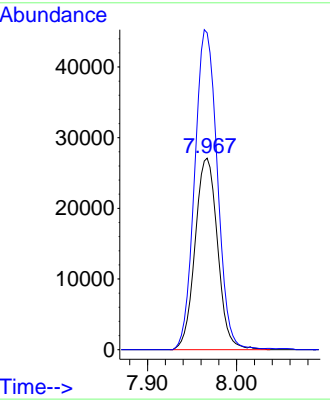
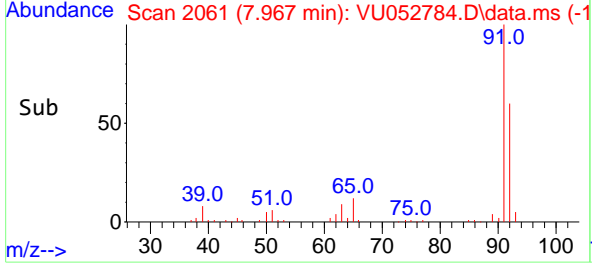
#49
 Toluene
 Concen: 1.932 ug/l
 RT: 7.967 min Scan# 2061
 Delta R.T. -0.000 min
 Lab File: VU052784.D
 Acq: 24 Jan 2023 11:55

Instrument : MSVOA_U
 Client Sample Id : VU0124WBS02

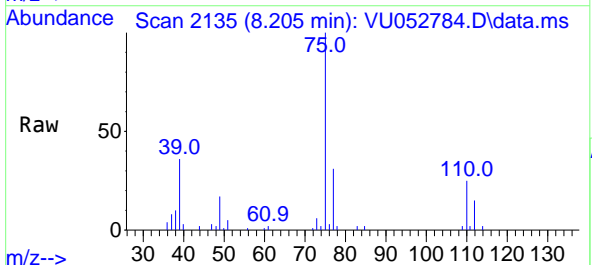


Tgt Ion: 92 Resp: 47479
 Ion Ratio Lower Upper
 92 100
 91 167.9 133.8 200.8

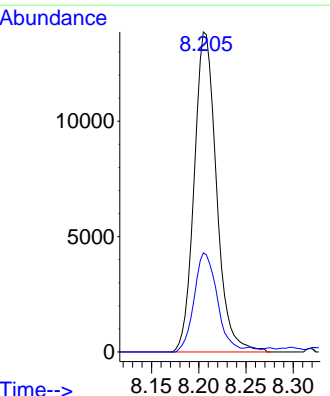
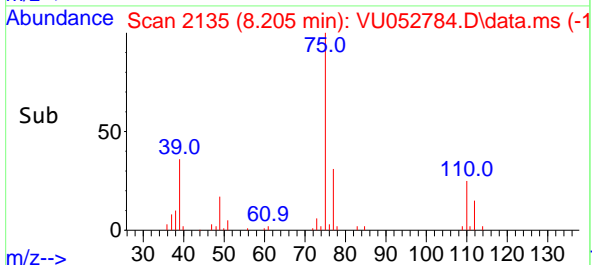
Manual Integrations
APPROVED
 Reviewed By :Krupa Patel 01/27/2023
 Supervised By :Mahesh Dadoda 01/30/2023

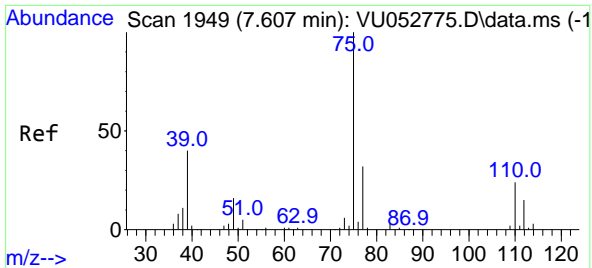


#50
 t-1,3-Dichloropropene
 Concen: 1.847 ug/l
 RT: 8.205 min Scan# 2135
 Delta R.T. -0.003 min
 Lab File: VU052784.D
 Acq: 24 Jan 2023 11:55



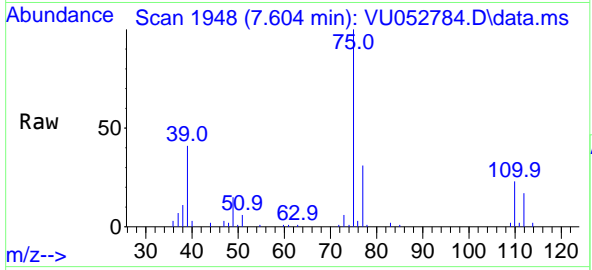
Tgt Ion: 75 Resp: 22712
 Ion Ratio Lower Upper
 75 100
 77 31.0 24.4 36.6





#51
 cis-1,3-Dichloropropene
 Concen: 1.922 ug/l
 RT: 7.604 min Scan# 1948
 Delta R.T. -0.003 min
 Lab File: VU052784.D
 Acq: 24 Jan 2023 11:55

Instrument : MSVOA_U
 Client Sample Id : VU0124WBS02

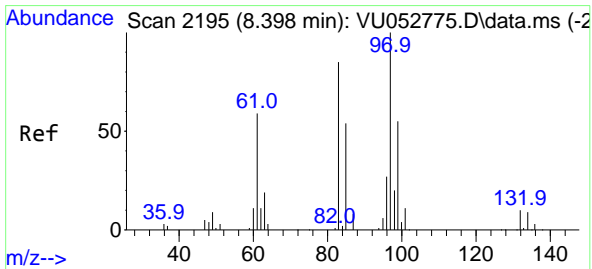
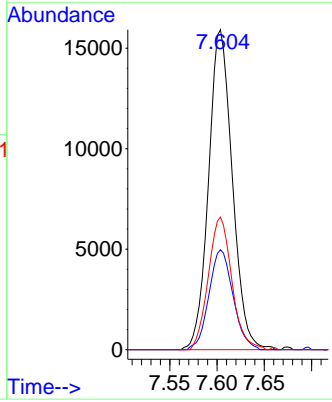
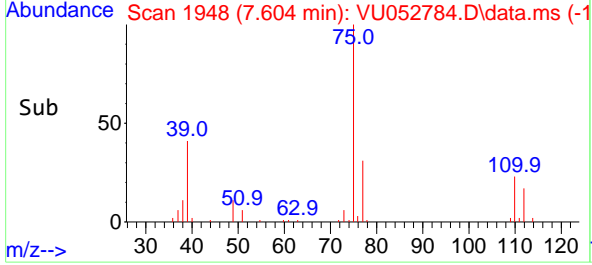


Tgt Ion: 75 Resp: 27804

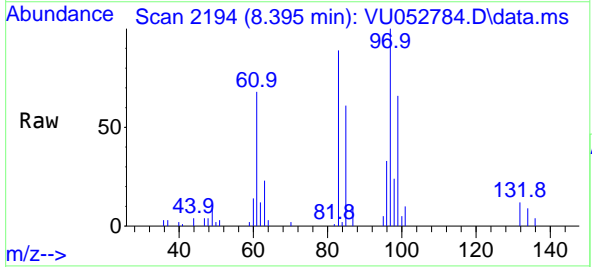
Ion	Ratio	Lower	Upper
75	100		
77	31.3	25.5	38.3
39	41.5	32.3	48.5

Manual Integrations
APPROVED

Reviewed By :Krupa Patel 01/27/2023
 Supervised By :Mahesh Dadoda 01/30/2023

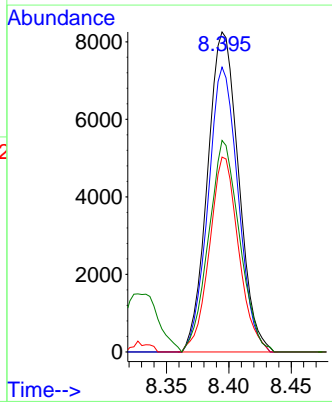
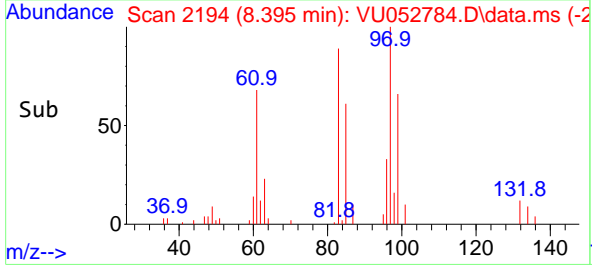


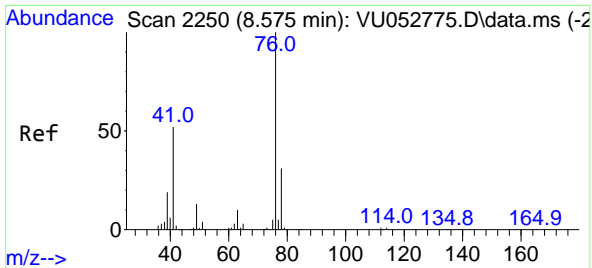
#52
 1,1,2-Trichloroethane
 Concen: 1.941 ug/l
 RT: 8.395 min Scan# 2194
 Delta R.T. -0.003 min
 Lab File: VU052784.D
 Acq: 24 Jan 2023 11:55



Tgt Ion: 97 Resp: 14346

Ion	Ratio	Lower	Upper
97	100		
83	89.0	68.2	102.2
85	60.9	44.5	66.7
99	66.1	51.0	76.4





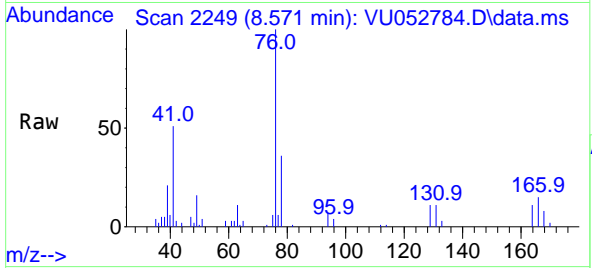
#53
 1,3-Dichloropropane
 Concen: 1.881 ug/l
 RT: 8.571 min Scan# 21
 Delta R.T. -0.003 min
 Lab File: VU052784.D
 Acq: 24 Jan 2023 11:55

Instrument :

MSVOA_U

Client Sample Id :

VU0124WBS02



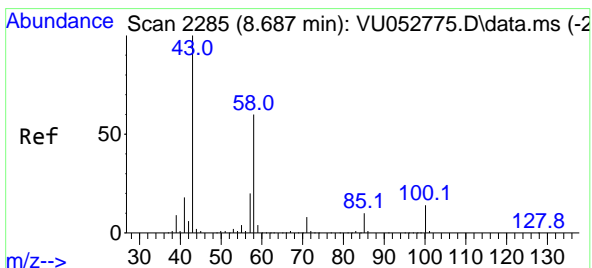
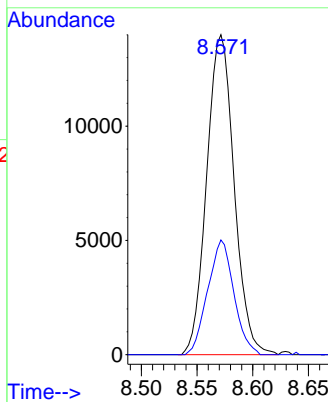
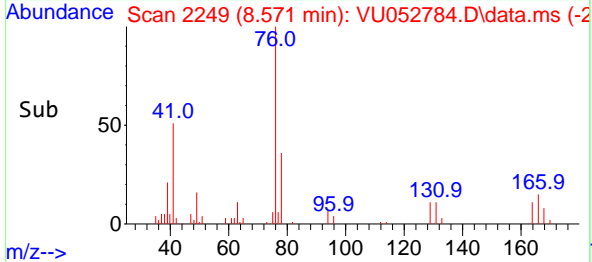
Tgt Ion: 76 Resp: 24039
 Ion Ratio Lower Upper
 76 100
 78 34.2 25.2 37.8

Manual Integrations

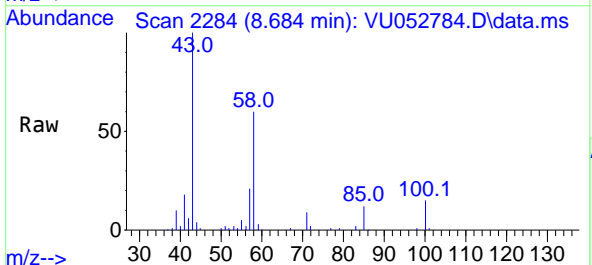
APPROVED

Reviewed By :Krupa Patel 01/27/2023

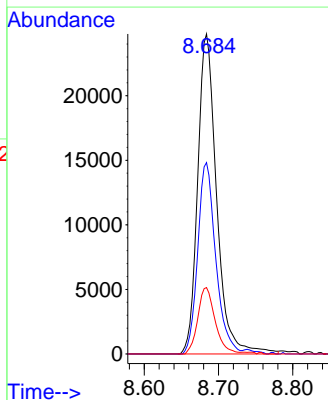
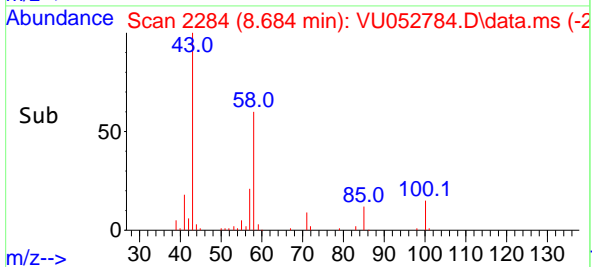
Supervised By :Mahesh Dadoda 01/30/2023

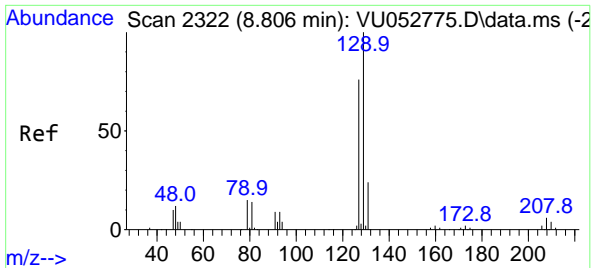


#54
 2-Hexanone
 Concen: 9.205 ug/l
 RT: 8.684 min Scan# 2284
 Delta R.T. -0.003 min
 Lab File: VU052784.D
 Acq: 24 Jan 2023 11:55



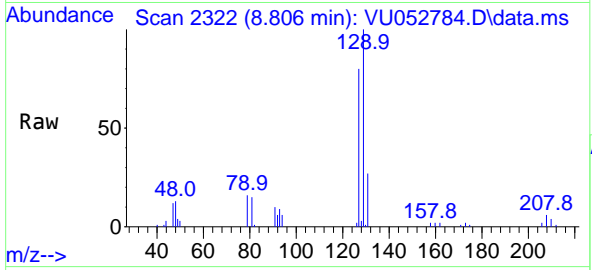
Tgt Ion: 43 Resp: 43986
 Ion Ratio Lower Upper
 43 100
 58 56.8 40.0 80.0
 57 19.0 0.6 40.6





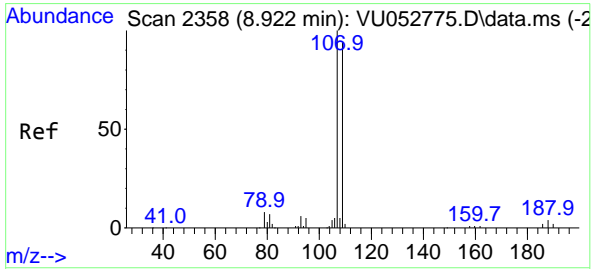
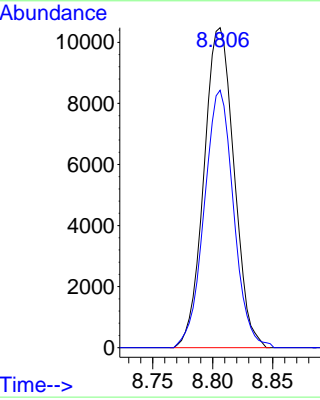
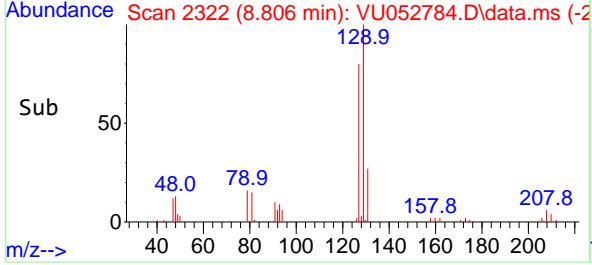
#55
 Dibromochloromethane
 Concen: 1.894 ug/l
 RT: 8.806 min Scan# 21
 Delta R.T. -0.000 min
 Lab File: VU052784.D
 Acq: 24 Jan 2023 11:55

Instrument : MSVOA_U
 Client Sample Id : VU0124WBS02

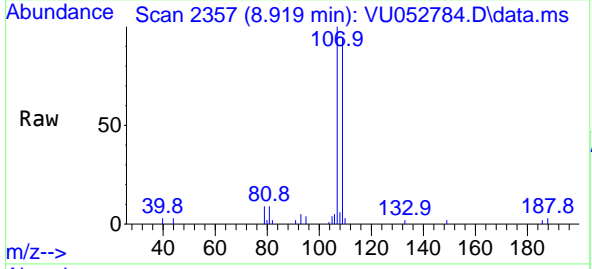


Tgt Ion:129 Resp: 1830
 Ion Ratio Lower Upper
 129 100
 127 78.5 61.5 92.3

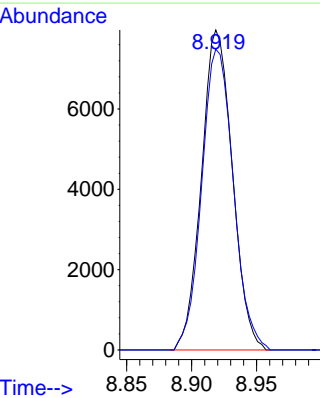
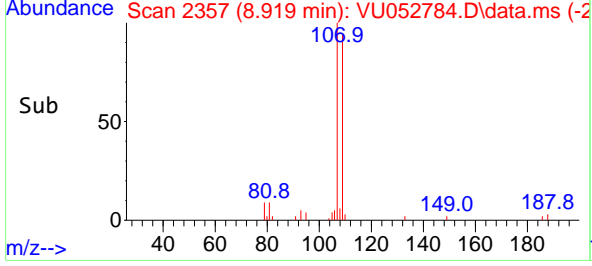
Manual Integrations
APPROVED
 Reviewed By :Krupa Patel 01/27/2023
 Supervised By :Mahesh Dadoda 01/30/2023

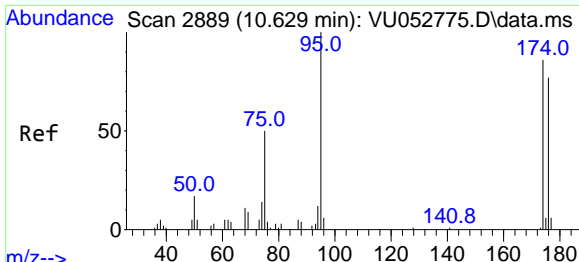


#56
 1,2-Dibromoethane
 Concen: 1.875 ug/l
 RT: 8.919 min Scan# 2357
 Delta R.T. -0.003 min
 Lab File: VU052784.D
 Acq: 24 Jan 2023 11:55



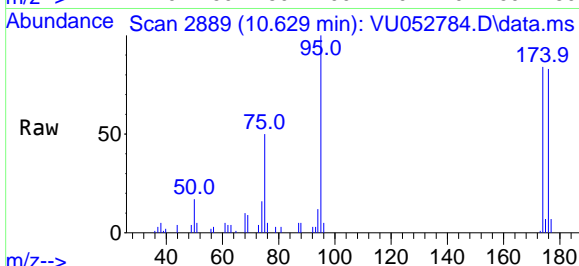
Tgt Ion:107 Resp: 13197
 Ion Ratio Lower Upper
 107 100
 109 96.2 0.0 190.4





#57
 4-Bromofluorobenzene
 Concen: 0.964 ug/l
 RT: 10.629 min Scan# 2889
 Delta R.T. -0.000 min
 Lab File: VU052784.D
 Acq: 24 Jan 2023 11:55

Instrument : MSVOA_U
 ClientSampleId : VU0124WBS02

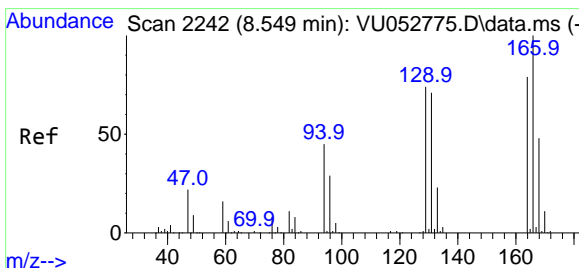
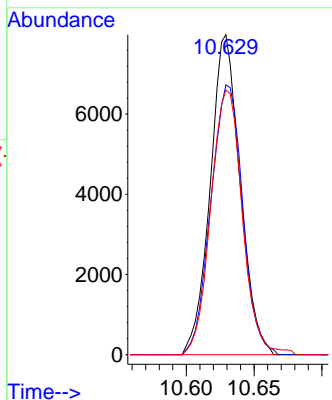
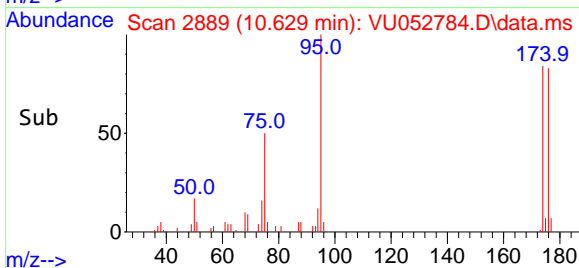


Tgt Ion: 95 Resp: 1222

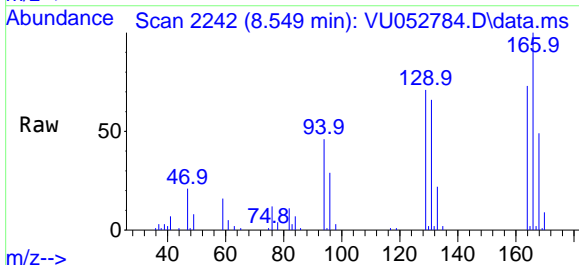
Ion	Ratio	Lower	Upper
95	100		
174	89.5	66.9	100.3
176	87.3	61.9	92.9

Manual Integrations
APPROVED

Reviewed By :Krupa Patel 01/27/2023
 Supervised By :Mahesh Dadoda 01/30/2023

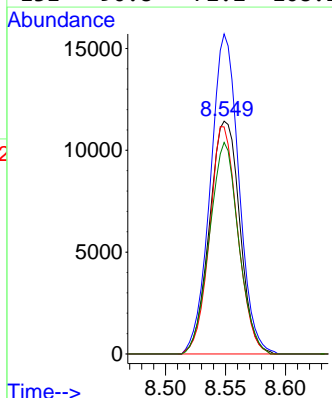
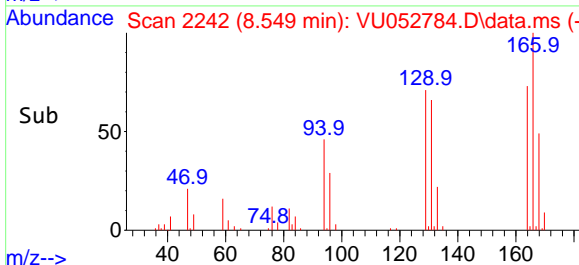


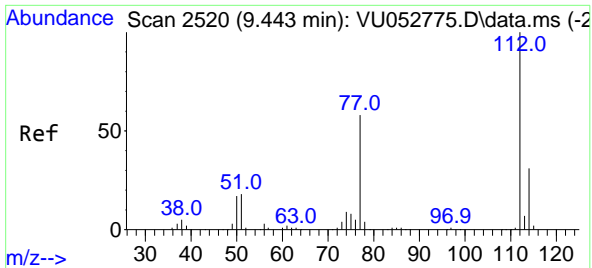
#58
 Tetrachloroethene
 Concen: 2.014 ug/l
 RT: 8.549 min Scan# 2242
 Delta R.T. -0.000 min
 Lab File: VU052784.D
 Acq: 24 Jan 2023 11:55



Tgt Ion:164 Resp: 20054

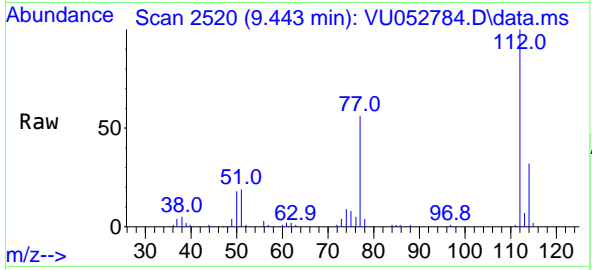
Ion	Ratio	Lower	Upper
164	100		
166	137.5	101.5	152.3
129	97.5	75.2	112.8
131	90.8	72.2	108.2





#59
 Chlorobenzene
 Concen: 1.942 ug/l
 RT: 9.443 min Scan# 2520
 Delta R.T. -0.000 min
 Lab File: VU052784.D
 Acq: 24 Jan 2023 11:55

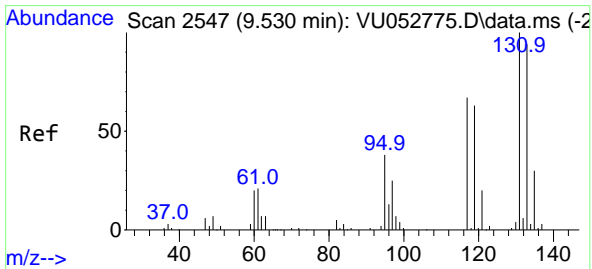
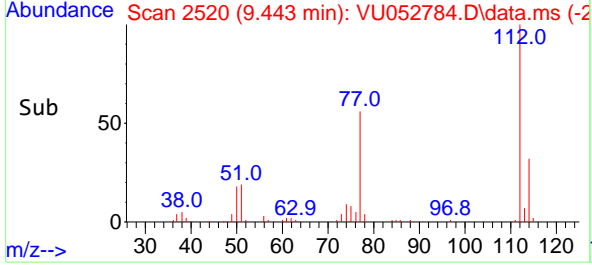
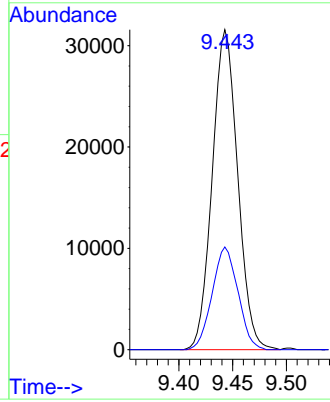
Instrument : MSVOA_U
 ClientSampleId : VU0124WBS02



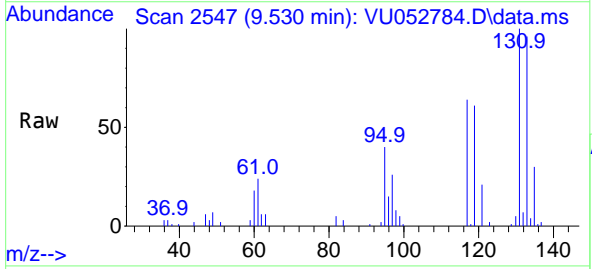
Tgt Ion:112 Resp: 51938
 Ion Ratio Lower Upper
 112 100
 114 32.1 25.2 37.8

Manual Integrations
APPROVED

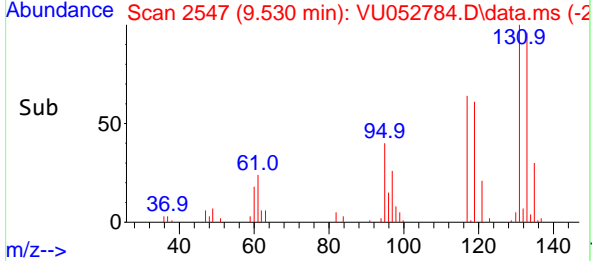
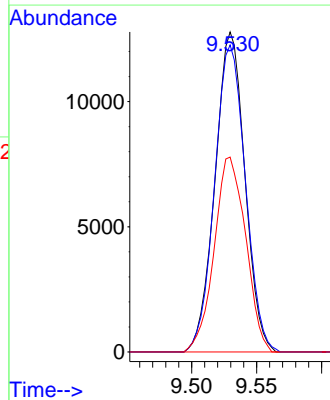
Reviewed By :Krupa Patel 01/27/2023
 Supervised By :Mahesh Dadoda 01/30/2023

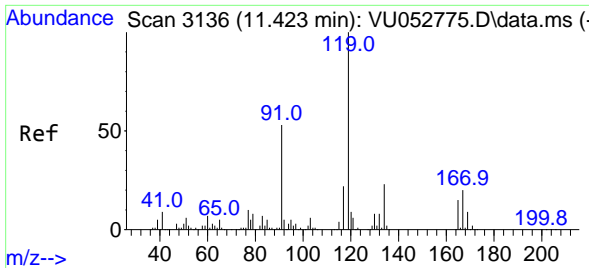


#60
 1,1,1,2-Tetrachloroethane
 Concen: 1.969 ug/l
 RT: 9.530 min Scan# 2547
 Delta R.T. -0.000 min
 Lab File: VU052784.D
 Acq: 24 Jan 2023 11:55



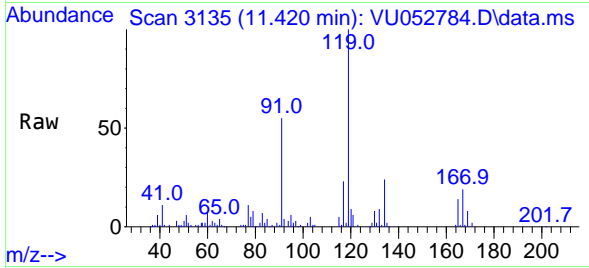
Tgt Ion:131 Resp: 20386
 Ion Ratio Lower Upper
 131 100
 133 99.0 77.2 115.8
 119 64.2 50.8 76.2





#61
 Pentachloroethane
 Concen: 2.003 ug/l
 RT: 11.420 min Scan# 3136
 Delta R.T. -0.003 min
 Lab File: VU052784.D
 Acq: 24 Jan 2023 11:55

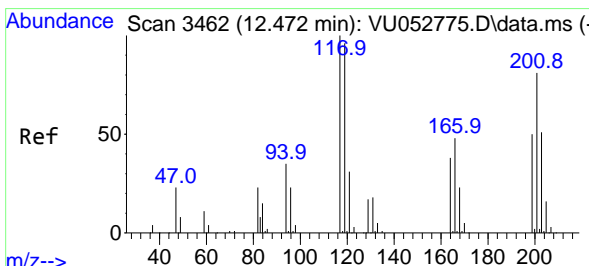
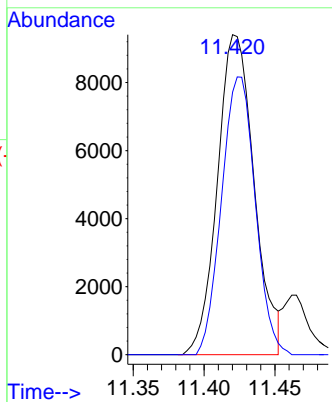
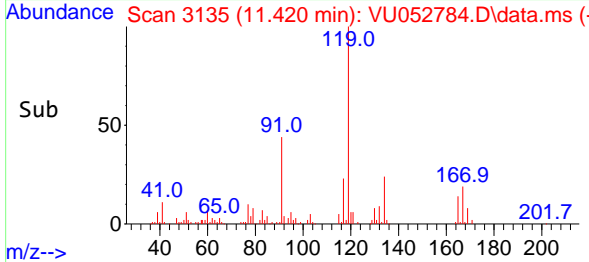
Instrument : MSVOA_U
 Client Sample Id : VU0124WBS02



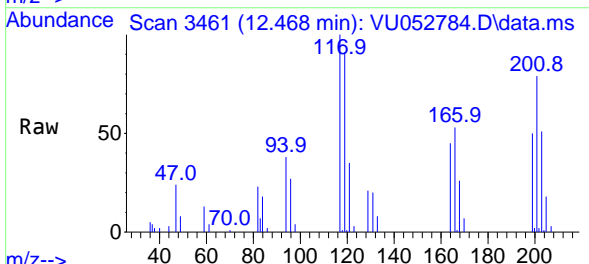
Tgt Ion:117 Resp: 1698
 Ion Ratio Lower Upper
 117 100
 167 79.5 66.8 100.2

Manual Integrations
APPROVED

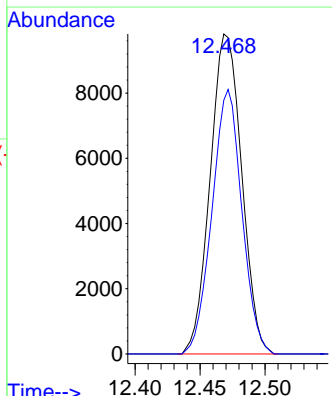
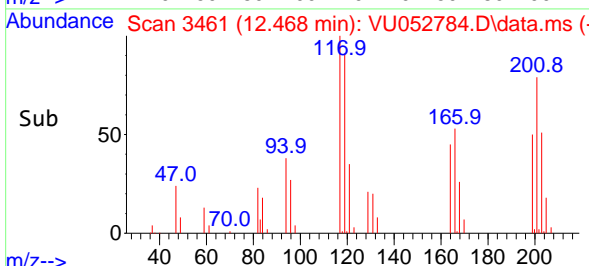
Reviewed By :Krupa Patel 01/27/2023
 Supervised By :Mahesh Dadoda 01/30/2023

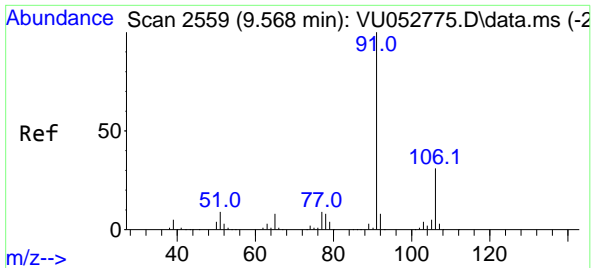


#62
 Hexachloroethane
 Concen: 1.933 ug/l
 RT: 12.468 min Scan# 3461
 Delta R.T. -0.003 min
 Lab File: VU052784.D
 Acq: 24 Jan 2023 11:55



Tgt Ion:117 Resp: 16561
 Ion Ratio Lower Upper
 117 100
 201 78.3 64.6 97.0





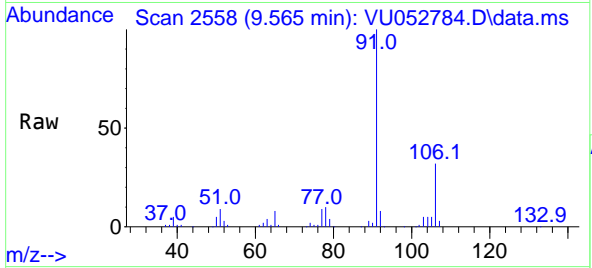
#63
 Ethyl Benzene
 Concen: 1.783 ug/l
 RT: 9.565 min Scan# 2558
 Delta R.T. -0.003 min
 Lab File: VU052784.D
 Acq: 24 Jan 2023 11:55

Instrument :

MSVOA_U

Client Sample Id :

VU0124WBS02



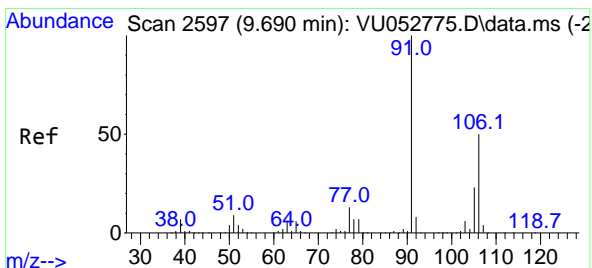
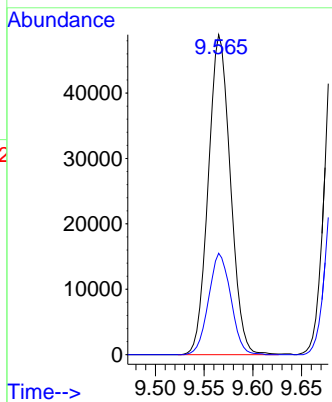
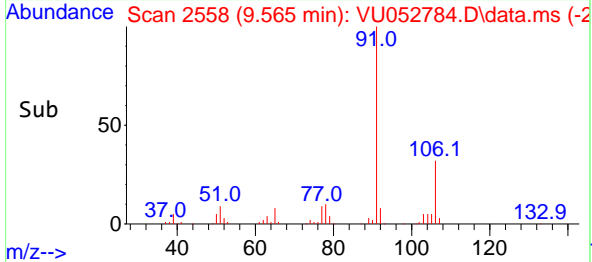
Tgt Ion: 91 Resp: 7725
 Ion Ratio Lower Upper
 91 100
 106 31.7 25.1 37.7

Manual Integrations

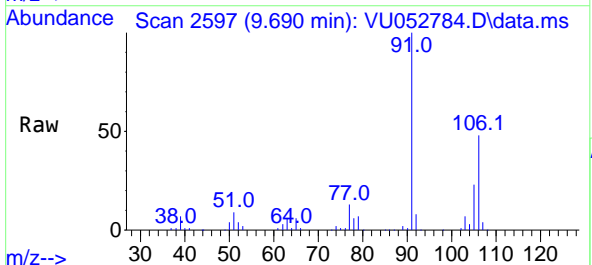
APPROVED

Reviewed By :Krupa Patel 01/27/2023

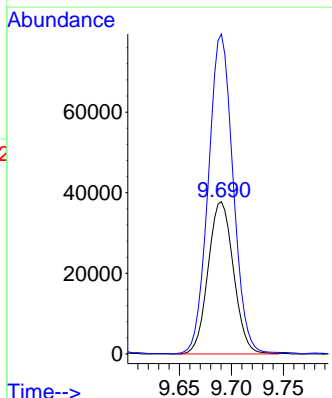
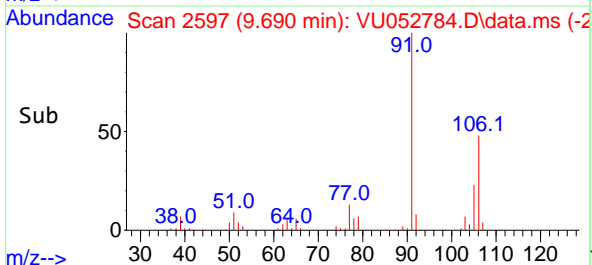
Supervised By :Mahesh Dadoda 01/30/2023

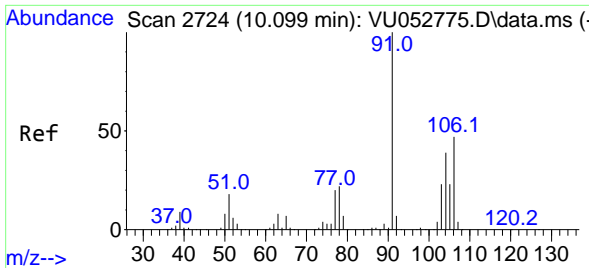


#64
 m/p-Xylenes
 Concen: 3.715 ug/l
 RT: 9.690 min Scan# 2597
 Delta R.T. 0.000 min
 Lab File: VU052784.D
 Acq: 24 Jan 2023 11:55



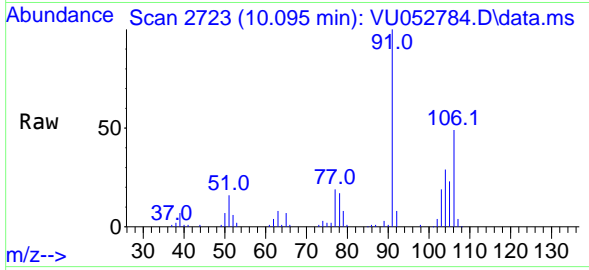
Tgt Ion:106 Resp: 64170
 Ion Ratio Lower Upper
 106 100
 91 206.2 158.7 238.1





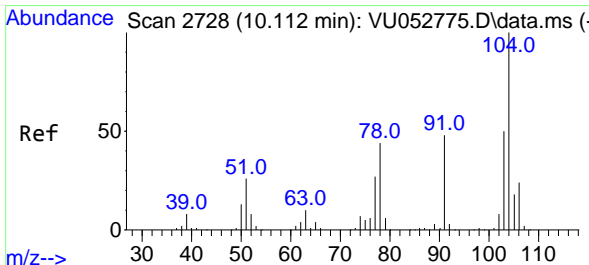
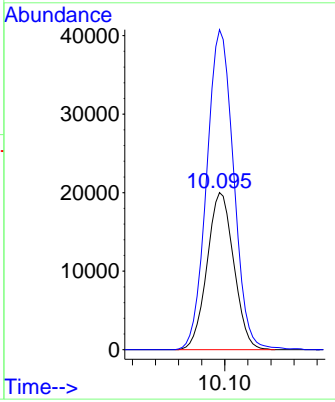
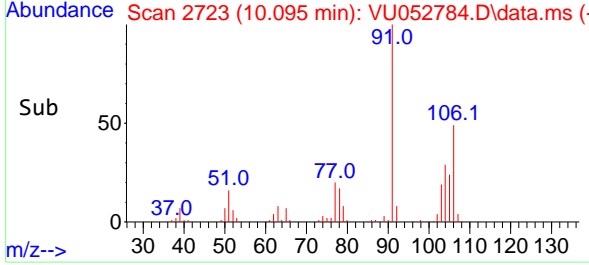
#65
 o-Xylene
 Concen: 1.927 ug/l
 RT: 10.095 min Scan# 2723
 Delta R.T. -0.004 min
 Lab File: VU052784.D
 Acq: 24 Jan 2023 11:55

Instrument : MSVOA_U
 Client Sample Id : VU0124WBS02

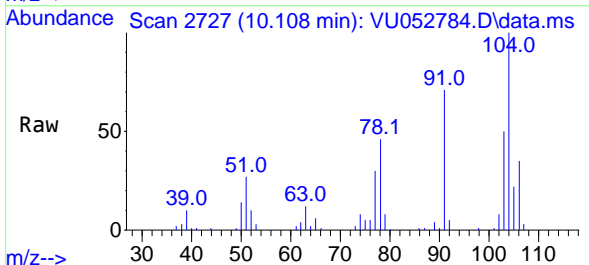


Tgt Ion:106 Resp: 32124
 Ion Ratio Lower Upper
 106 100
 91 205.7 105.6 316.8

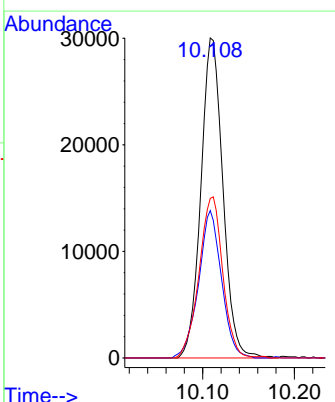
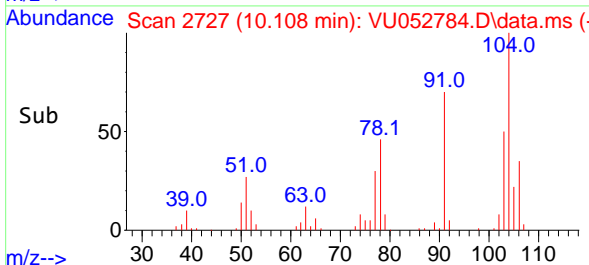
Manual Integrations
APPROVED
 Reviewed By :Krupa Patel 01/27/2023
 Supervised By :Mahesh Dadoda 01/30/2023

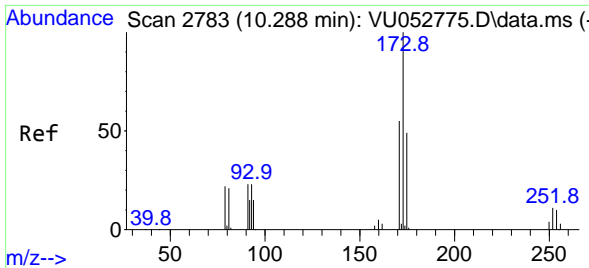


#66
 Styrene
 Concen: 1.914 ug/l
 RT: 10.108 min Scan# 2727
 Delta R.T. -0.004 min
 Lab File: VU052784.D
 Acq: 24 Jan 2023 11:55



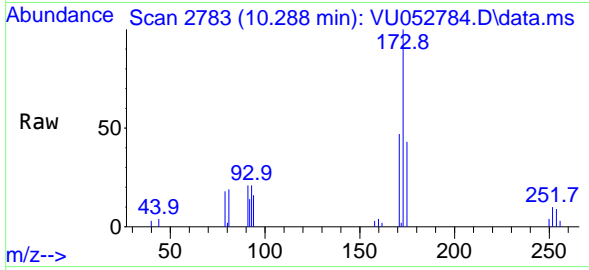
Tgt Ion:104 Resp: 50097
 Ion Ratio Lower Upper
 104 100
 78 47.9 39.6 59.4
 103 54.1 42.9 64.3





#67
 Bromoform
 Concen: 1.919 ug/l
 RT: 10.288 min Scan# 2783
 Delta R.T. -0.000 min
 Lab File: VU052784.D
 Acq: 24 Jan 2023 11:55

Instrument : MSVOA_U
 Client Sample Id : VU0124WBS02

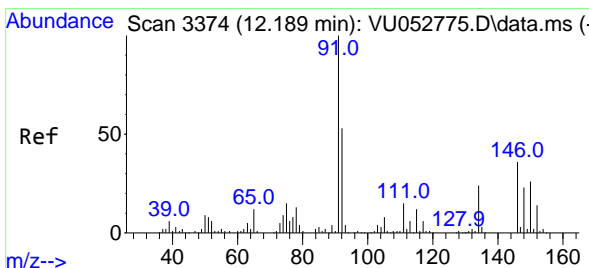
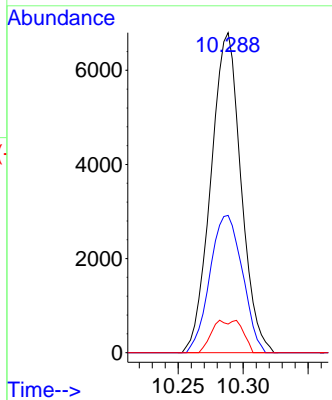
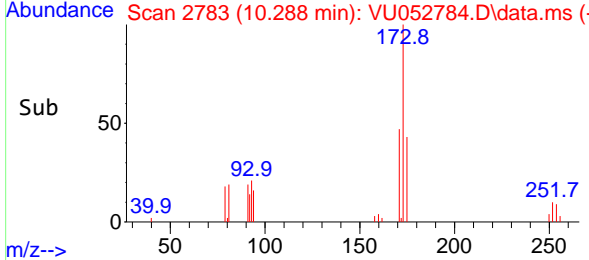


Tgt Ion: 173 Resp: 10950

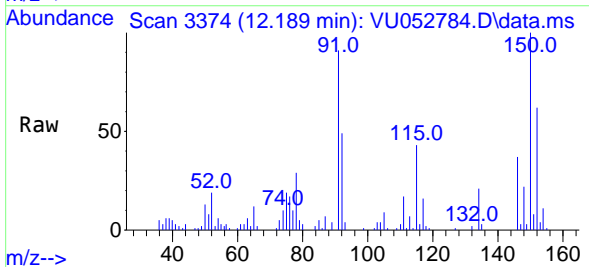
Ion	Ratio	Lower	Upper
173	100		
175	46.3	39.5	59.3
254	5.8	8.0	12.0

Manual Integrations
APPROVED

Reviewed By :Krupa Patel 01/27/2023
 Supervised By :Mahesh Dadoda 01/30/2023

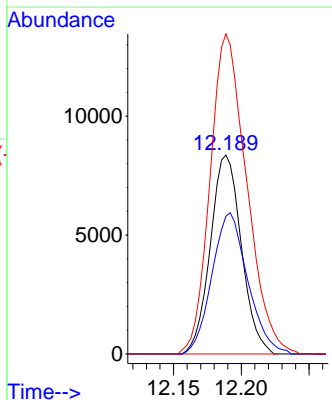
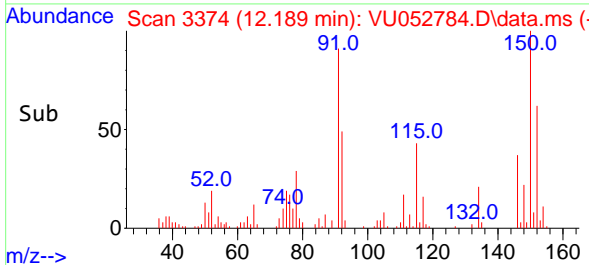


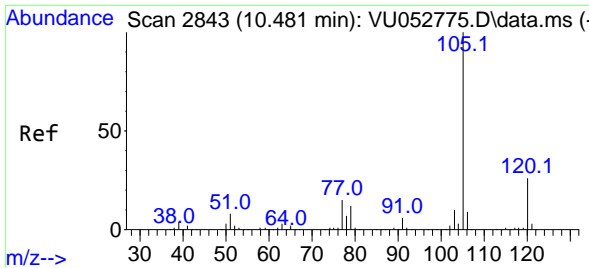
#68
 1,2-Dichlorobenzene-d4
 Concen: 1.021 ug/l
 RT: 12.189 min Scan# 3374
 Delta R.T. -0.000 min
 Lab File: VU052784.D
 Acq: 24 Jan 2023 11:55



Tgt Ion: 152 Resp: 13315

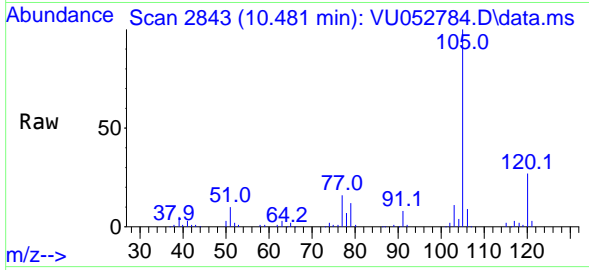
Ion	Ratio	Lower	Upper
152	100		
115	81.7	0.0	262.6
150	189.3	0.0	638.0





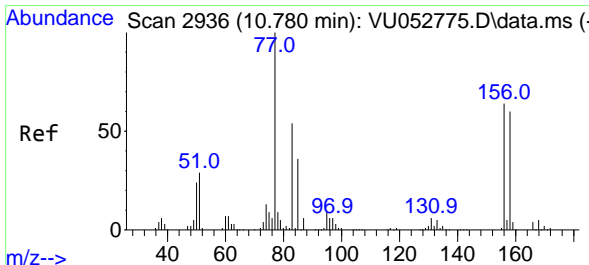
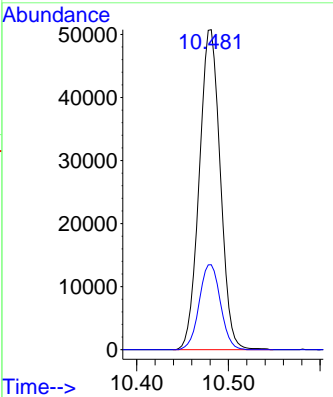
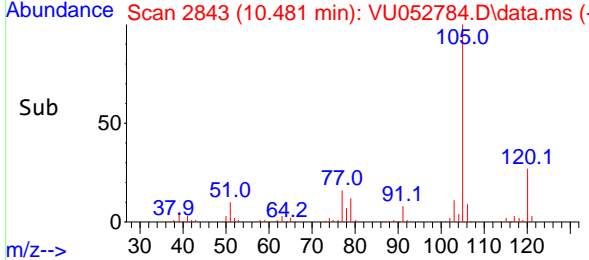
#69
 Isopropylbenzene
 Concen: 1.903 ug/l
 RT: 10.481 min Scan# 2843
 Delta R.T. 0.000 min
 Lab File: VU052784.D
 Acq: 24 Jan 2023 11:55

Instrument : MSVOA_U
 Client Sample Id : VU0124WBS02

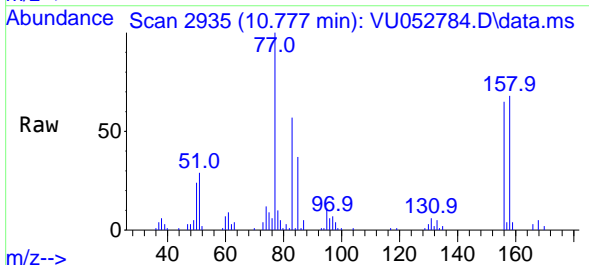


Tgt Ion: 105 Resp: 8071
 Ion Ratio Lower Upper
 105 100
 120 26.9 13.3 39.9

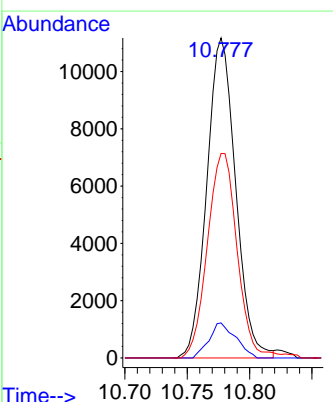
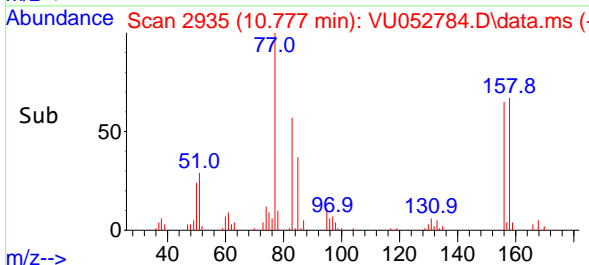
Manual Integrations
APPROVED
 Reviewed By :Krupa Patel 01/27/2023
 Supervised By :Mahesh Dadoda 01/30/2023

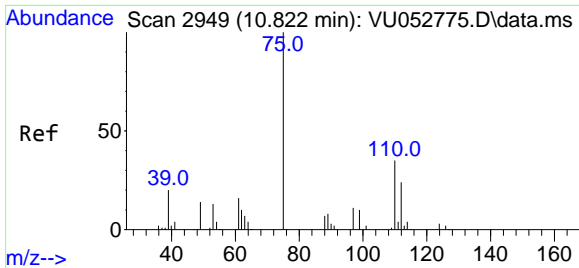


#70
 1,1,2,2-Tetrachloroethane
 Concen: 1.953 ug/l
 RT: 10.777 min Scan# 2935
 Delta R.T. -0.003 min
 Lab File: VU052784.D
 Acq: 24 Jan 2023 11:55



Tgt Ion: 83 Resp: 17993
 Ion Ratio Lower Upper
 83 100
 131 10.1 8.6 13.0
 85 66.3 52.6 78.8





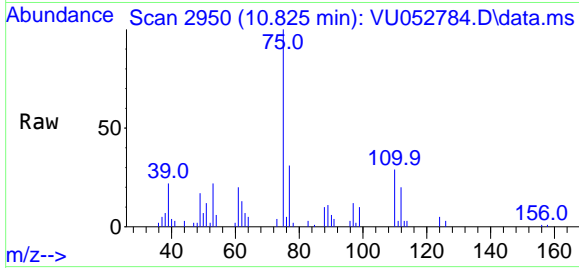
#71
 1,2,3-Trichloropropane
 Concen: 1.966 ug/l m
 RT: 10.825 min Scan# 2949
 Delta R.T. 0.003 min
 Lab File: VU052784.D
 Acq: 24 Jan 2023 11:55

Instrument :

MSVOA_U

ClientSampleId :

VU0124WBS02



Tgt Ion: 75 Resp: 15684

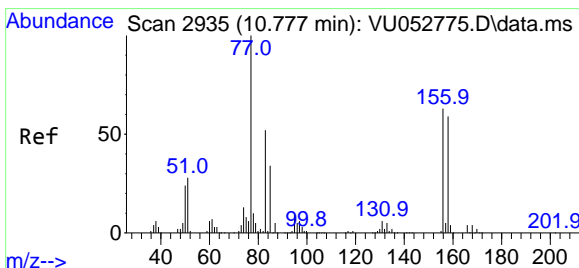
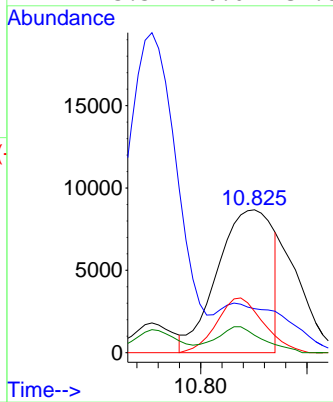
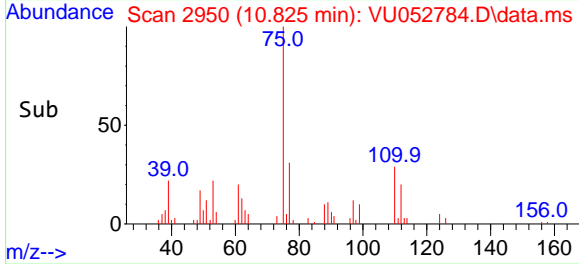
Ion	Ratio	Lower	Upper
75	100		
77	42.4	0.0	86.0
110	32.5	0.0	63.8
97	15.5	0.0	31.8

Manual Integrations

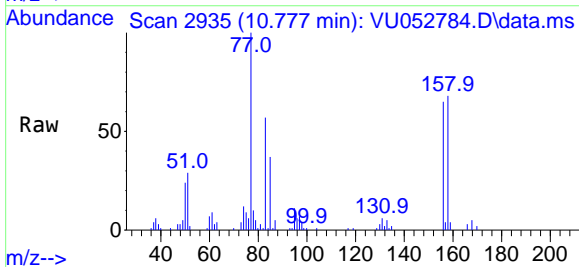
APPROVED

Reviewed By :Krupa Patel 01/27/2023

Supervised By :Mahesh Dadoda 01/30/2023

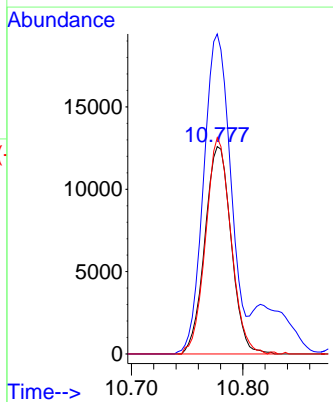
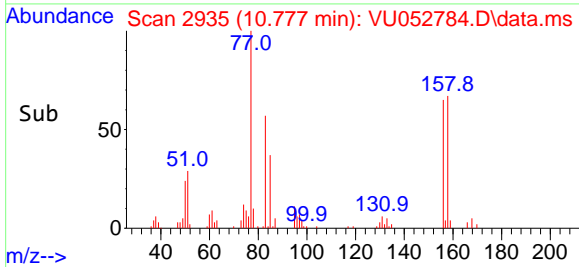


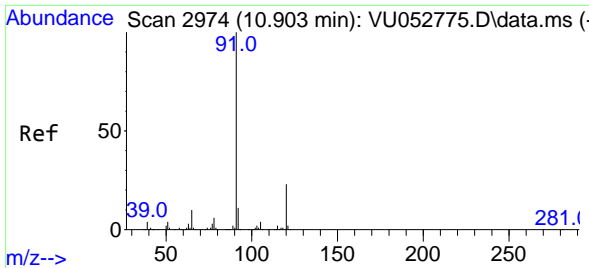
#72
 Bromobenzene
 Concen: 1.925 ug/l
 RT: 10.777 min Scan# 2935
 Delta R.T. -0.000 min
 Lab File: VU052784.D
 Acq: 24 Jan 2023 11:55



Tgt Ion:156 Resp: 20740

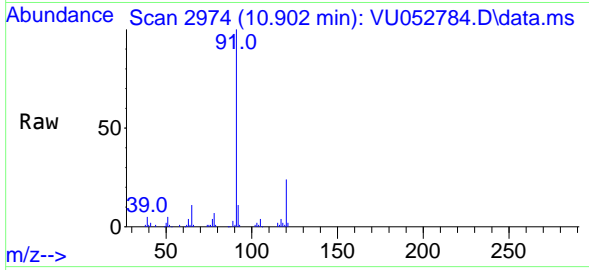
Ion	Ratio	Lower	Upper
156	100		
77	159.5	0.0	321.2
158	99.8	0.0	192.0





#73
 n-propylbenzene
 Concen: 1.890 ug/l
 RT: 10.902 min Scan# 2974
 Delta R.T. -0.001 min
 Lab File: VU052784.D
 Acq: 24 Jan 2023 11:55

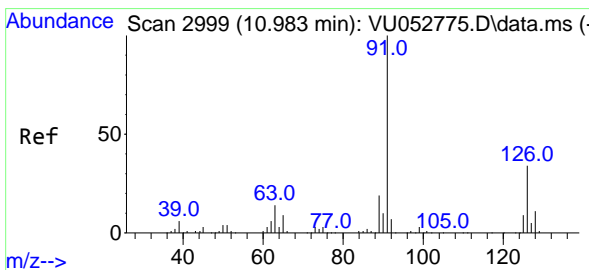
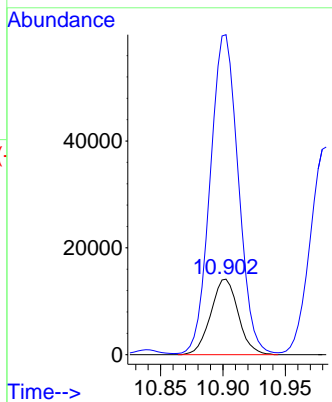
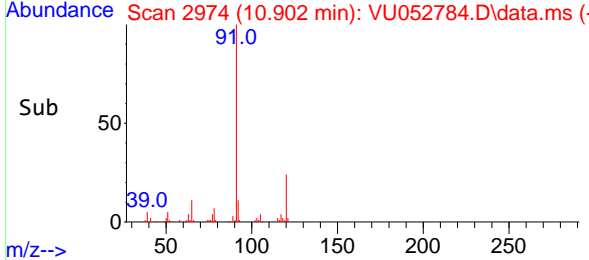
Instrument : MSVOA_U
 ClientSampleId : VU0124WBS02



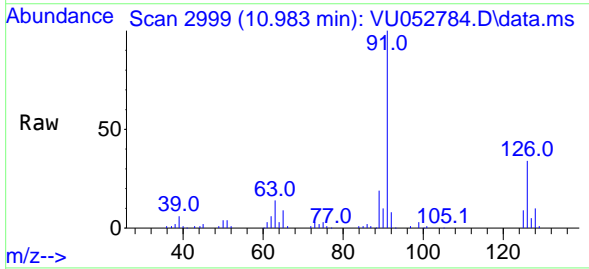
Tgt Ion:120 Resp: 21704
 Ion Ratio Lower Upper
 120 100
 91 429.8 348.0 522.0

Manual Integrations
APPROVED

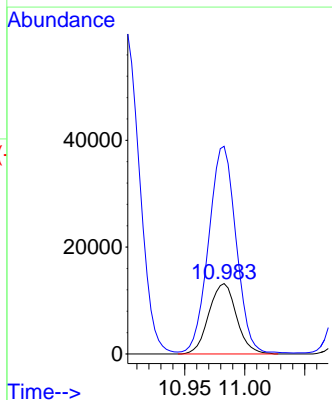
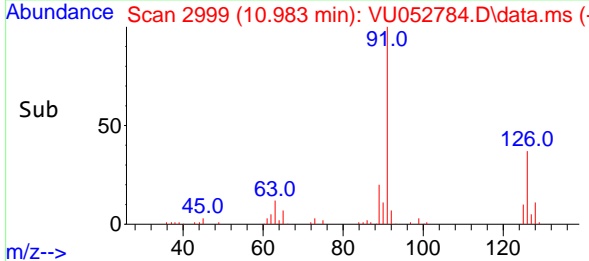
Reviewed By :Krupa Patel 01/27/2023
 Supervised By :Mahesh Dadoda 01/30/2023

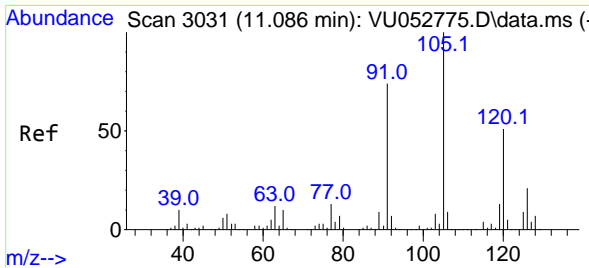


#74
 2-Chlorotoluene
 Concen: 1.965 ug/l
 RT: 10.983 min Scan# 2999
 Delta R.T. -0.000 min
 Lab File: VU052784.D
 Acq: 24 Jan 2023 11:55



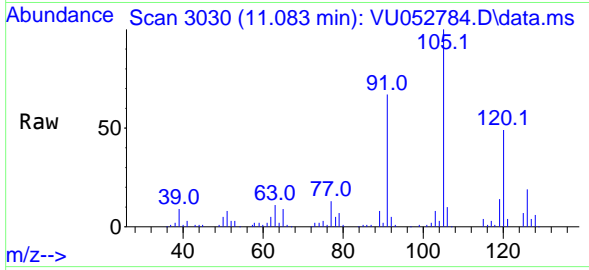
Tgt Ion:126 Resp: 21057
 Ion Ratio Lower Upper
 126 100
 91 291.0 0.0 588.6





#75
 1,3,5-Trimethylbenzene
 Concen: 1.953 ug/l
 RT: 11.083 min Scan# 3030
 Delta R.T. -0.004 min
 Lab File: VU052784.D
 Acq: 24 Jan 2023 11:55

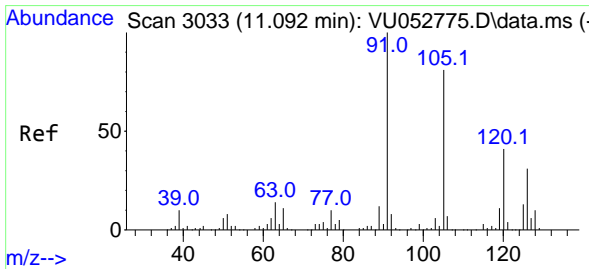
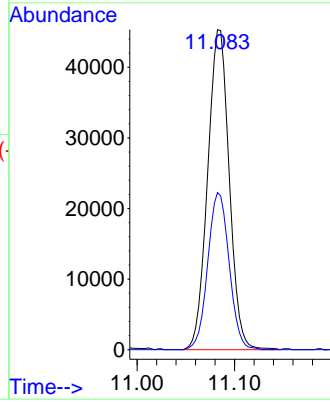
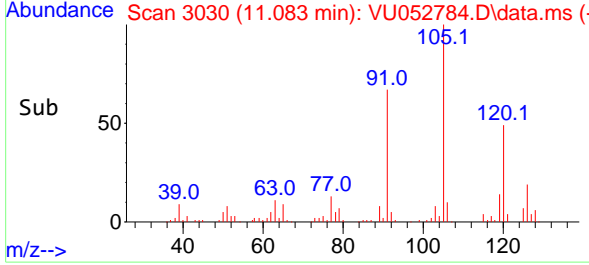
Instrument : MSVOA_U
 Client Sample Id : VU0124WBS02



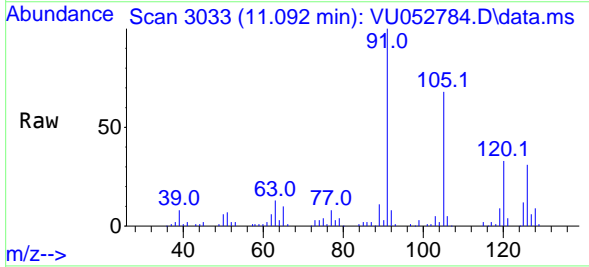
Tgt Ion: 105 Resp: 6972
 Ion Ratio Lower Upper
 105 100
 120 48.6 39.9 59.9

Manual Integrations
APPROVED

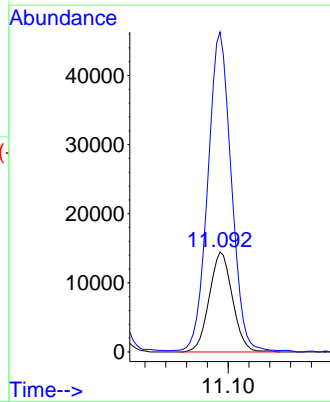
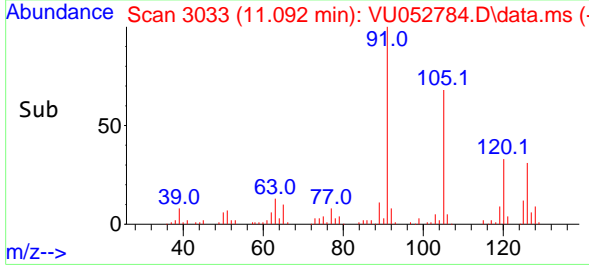
Reviewed By : Krupa Patel 01/27/2023
 Supervised By : Mahesh Dadoda 01/30/2023

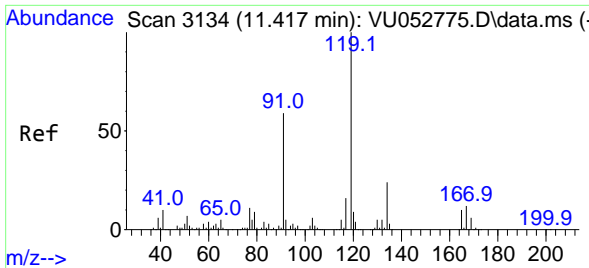


#76
 4-Chlorotoluene
 Concen: 2.037 ug/l
 RT: 11.092 min Scan# 3033
 Delta R.T. 0.000 min
 Lab File: VU052784.D
 Acq: 24 Jan 2023 11:55



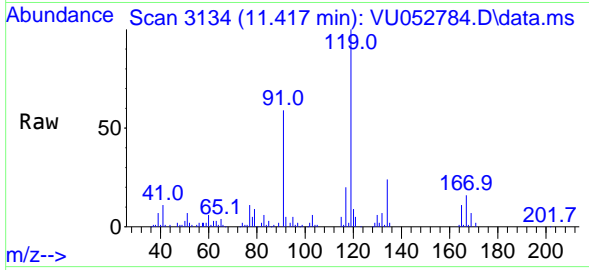
Tgt Ion: 126 Resp: 22397
 Ion Ratio Lower Upper
 126 100
 91 320.0 0.0 661.8





#77
 tert-Butylbenzene
 Concen: 1.952 ug/l
 RT: 11.417 min Scan# 3134
 Delta R.T. -0.000 min
 Lab File: VU052784.D
 Acq: 24 Jan 2023 11:55

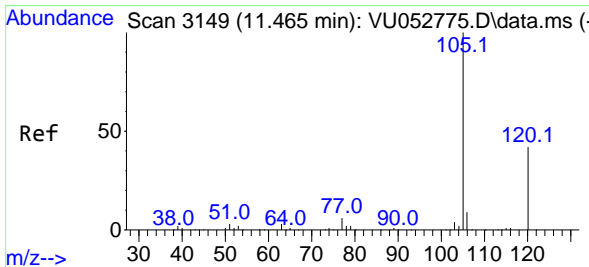
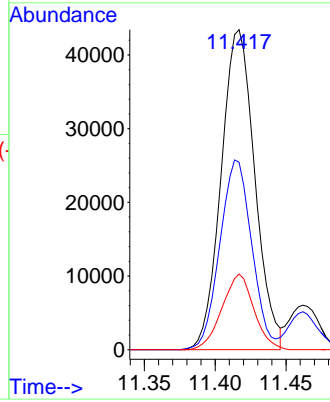
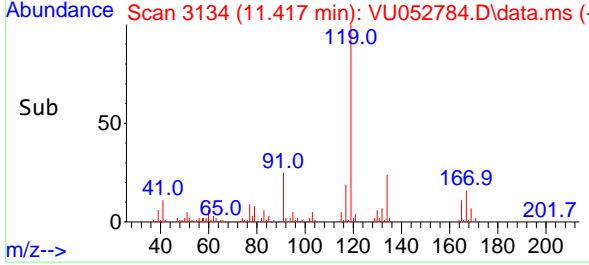
Instrument : MSVOA_U
 Client Sample Id : VU0124WBS02



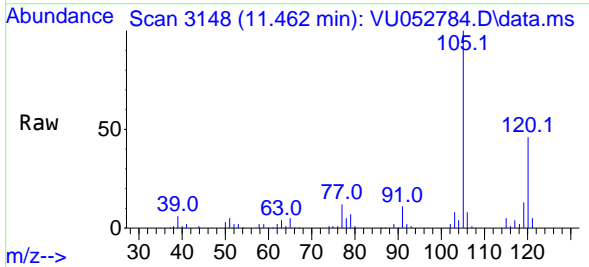
Tgt Ion:119 Resp: 7198
 Ion Ratio Lower Upper
 119 100
 91 56.2 28.4 85.3
 134 22.3 18.6 27.8

Manual Integrations
 APPROVED

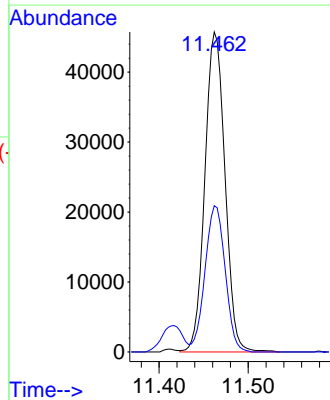
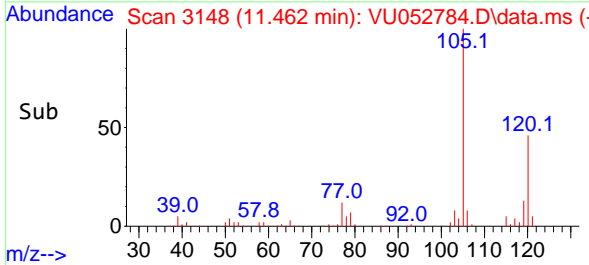
Reviewed By :Krupa Patel 01/27/2023
 Supervised By :Mahesh Dadoda 01/30/2023

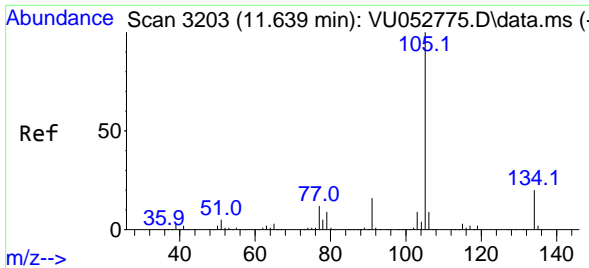


#78
 1,2,4-Trimethylbenzene
 Concen: 1.988 ug/l
 RT: 11.462 min Scan# 3148
 Delta R.T. -0.003 min
 Lab File: VU052784.D
 Acq: 24 Jan 2023 11:55



Tgt Ion:105 Resp: 71585
 Ion Ratio Lower Upper
 105 100
 120 46.1 23.4 70.3





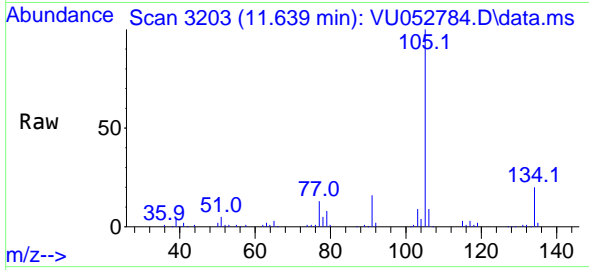
#79
 sec-Butylbenzene
 Concen: 1.965 ug/l
 RT: 11.639 min Scan# 31
 Delta R.T. -0.000 min
 Lab File: VU052784.D
 Acq: 24 Jan 2023 11:55

Instrument :

MSVOA_U

Client Sample Id :

VU0124WBS02



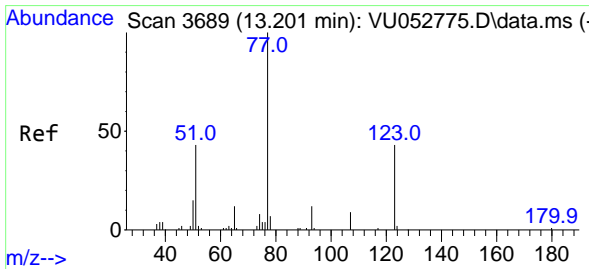
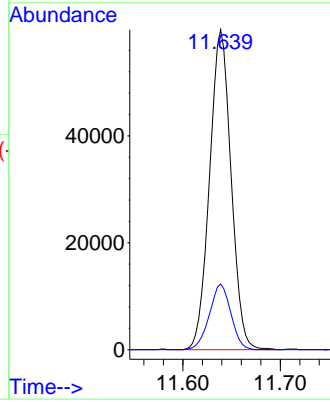
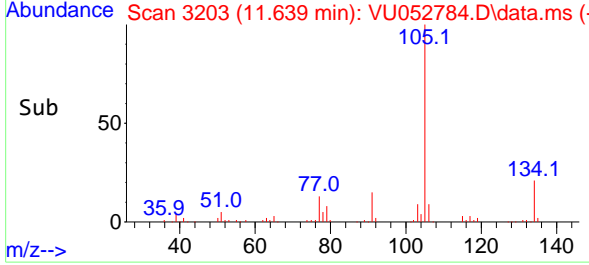
Tgt Ion:105 Resp: 91769
 Ion Ratio Lower Upper
 105 100
 134 20.5 16.5 24.7

Manual Integrations

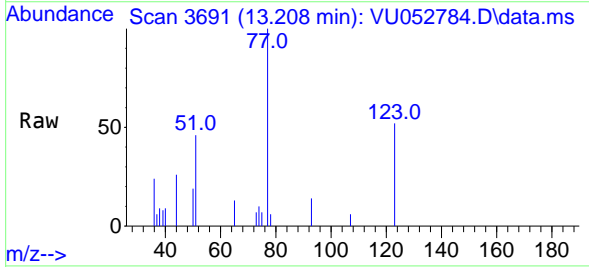
APPROVED

Reviewed By :Krupa Patel 01/27/2023

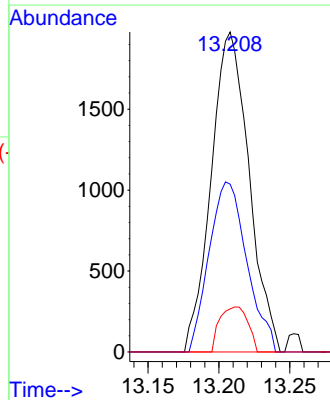
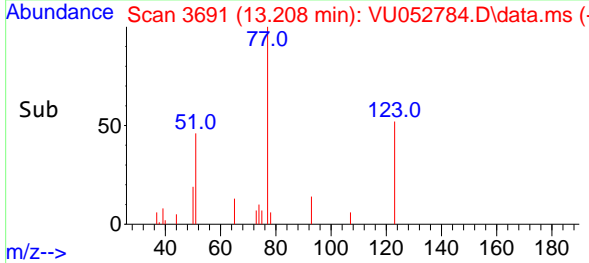
Supervised By :Mahesh Dadoda 01/30/2023

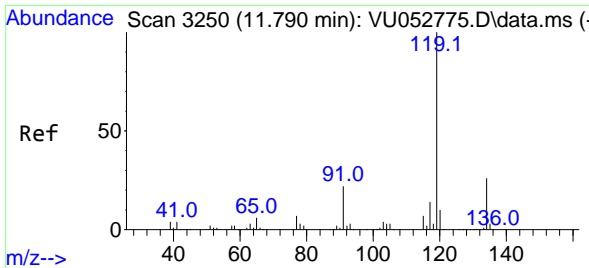


#80
 Nitrobenzene
 Concen: 6.447 ug/l
 RT: 13.208 min Scan# 3691
 Delta R.T. 0.007 min
 Lab File: VU052784.D
 Acq: 24 Jan 2023 11:55



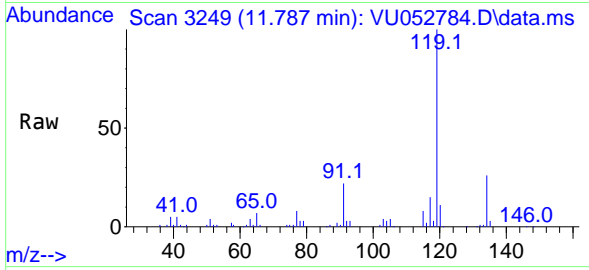
Tgt Ion: 77 Resp: 3677
 Ion Ratio Lower Upper
 77 100
 123 52.9 18.8 66.8
 65 10.4 10.1 12.9





#81
 p-Isopropyltoluene
 Concen: 1.936 ug/l
 RT: 11.787 min Scan# 31
 Delta R.T. -0.003 min
 Lab File: VU052784.D
 Acq: 24 Jan 2023 11:55

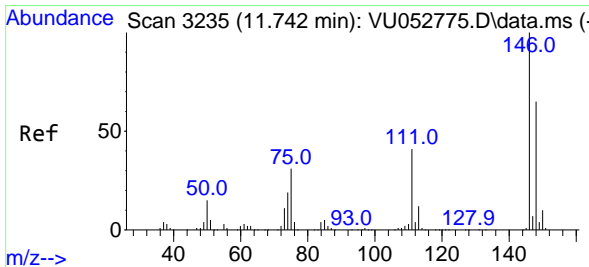
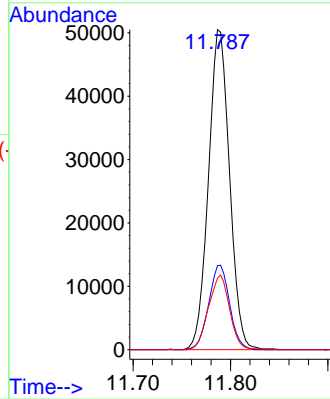
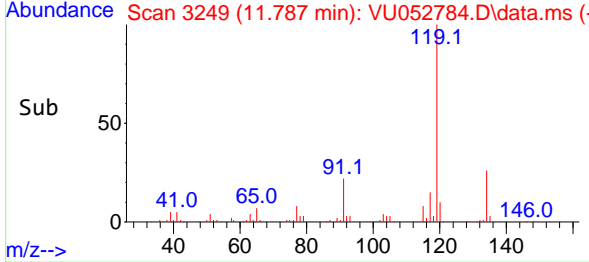
Instrument : MSVOA_U
 Client Sample Id : VU0124WBS02



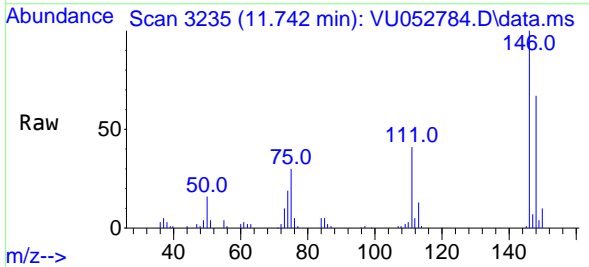
Tgt Ion:119 Resp: 7575
 Ion Ratio Lower Upper
 119 100
 134 26.2 20.7 31.1
 91 23.3 17.6 26.4

Manual Integrations
 APPROVED

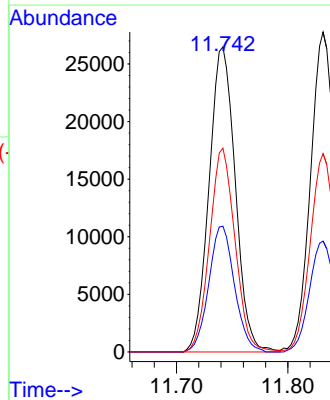
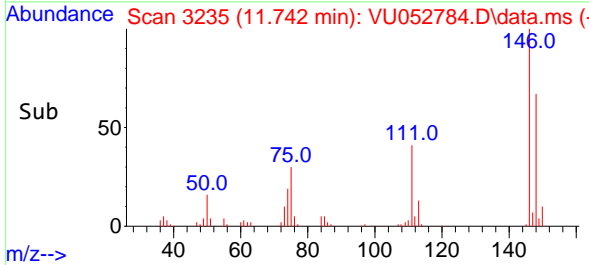
Reviewed By :Krupa Patel 01/27/2023
 Supervised By :Mahesh Dadoda 01/30/2023

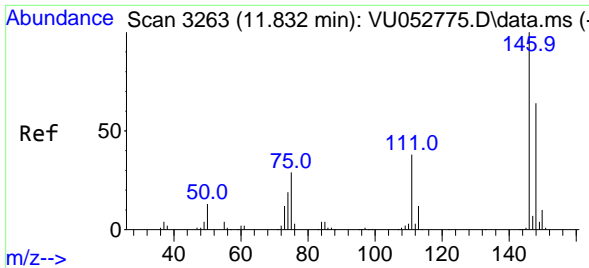


#82
 1,3-Dichlorobenzene
 Concen: 1.971 ug/l
 RT: 11.742 min Scan# 3235
 Delta R.T. -0.000 min
 Lab File: VU052784.D
 Acq: 24 Jan 2023 11:55



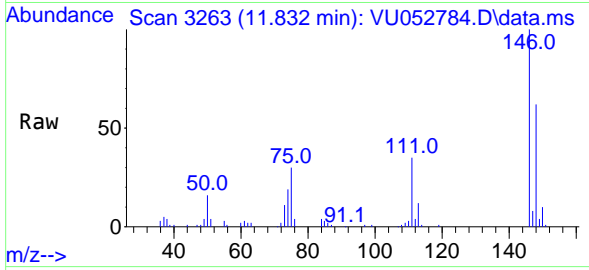
Tgt Ion:146 Resp: 43352
 Ion Ratio Lower Upper
 146 100
 111 40.4 32.6 48.8
 148 65.0 51.9 77.9





#83
 1,4-Dichlorobenzene
 Concen: 1.966 ug/l
 RT: 11.832 min Scan# 3263
 Delta R.T. -0.000 min
 Lab File: VU052784.D
 Acq: 24 Jan 2023 11:55

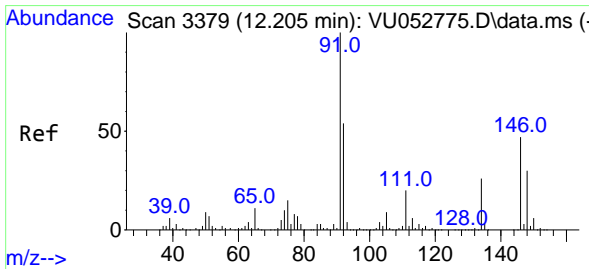
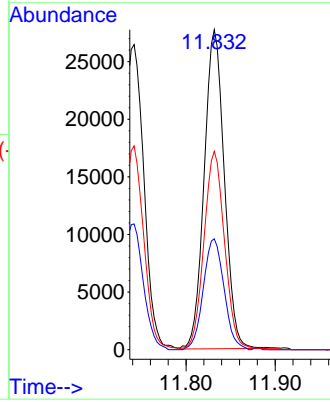
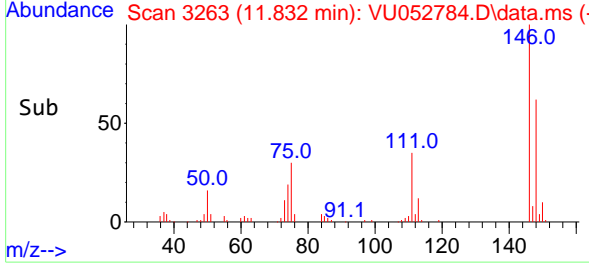
Instrument : MSVOA_U
 ClientSampleId : VU0124WBS02



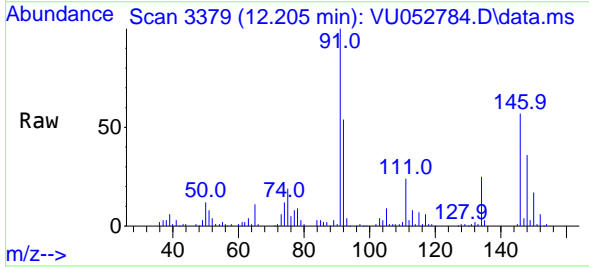
Tgt Ion:146 Resp: 43410
 Ion Ratio Lower Upper
 146 100
 111 35.8 29.5 44.3
 148 62.8 51.4 77.0

Manual Integrations
 APPROVED

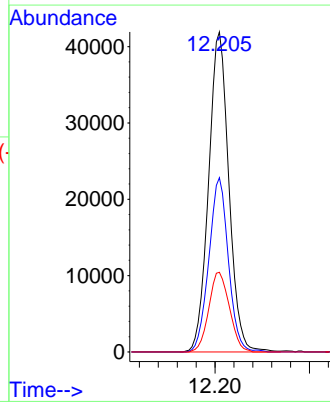
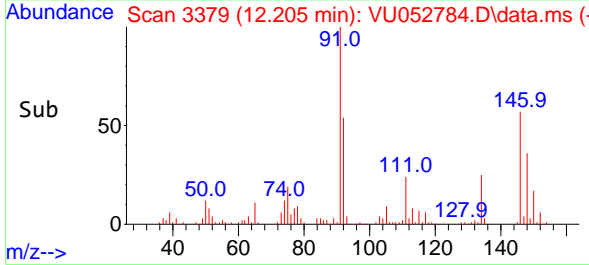
Reviewed By :Krupa Patel 01/27/2023
 Supervised By :Mahesh Dadoda 01/30/2023

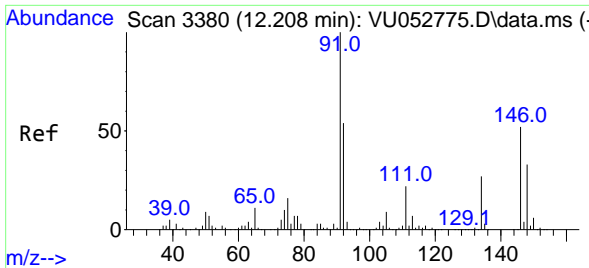


#84
 n-Butylbenzene
 Concen: 1.903 ug/l
 RT: 12.205 min Scan# 3379
 Delta R.T. -0.000 min
 Lab File: VU052784.D
 Acq: 24 Jan 2023 11:55



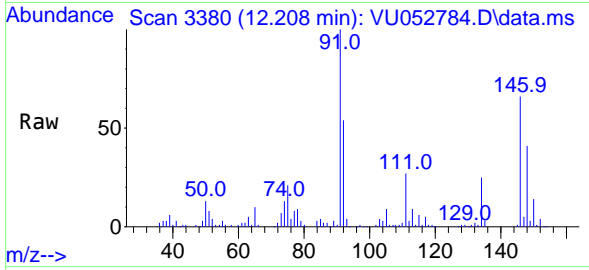
Tgt Ion: 91 Resp: 62315
 Ion Ratio Lower Upper
 91 100
 92 52.5 43.4 65.0
 134 25.3 21.2 31.8





#85
 1,2-Dichlorobenzene
 Concen: 1.990 ug/l
 RT: 12.208 min Scan# 31
 Delta R.T. -0.000 min
 Lab File: VU052784.D
 Acq: 24 Jan 2023 11:55

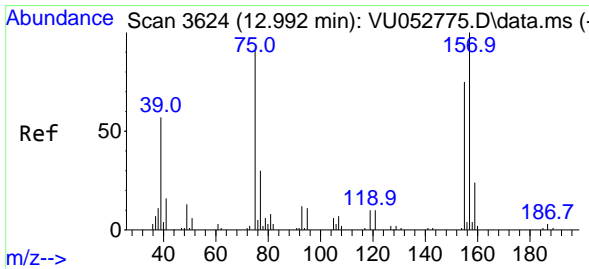
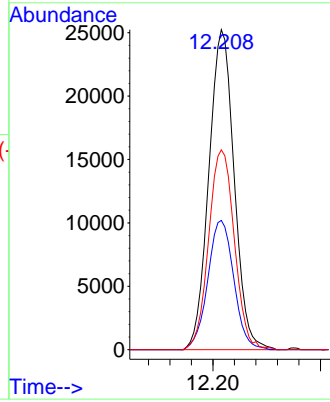
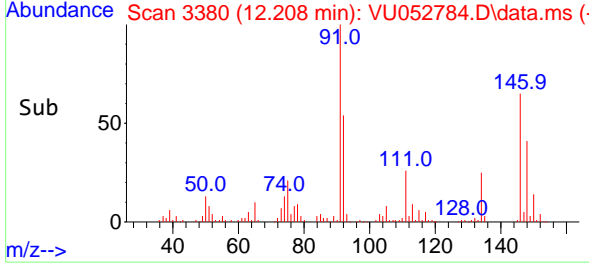
Instrument :
 MSVOA_U
 Client Sample Id :
 VU0124WBS02



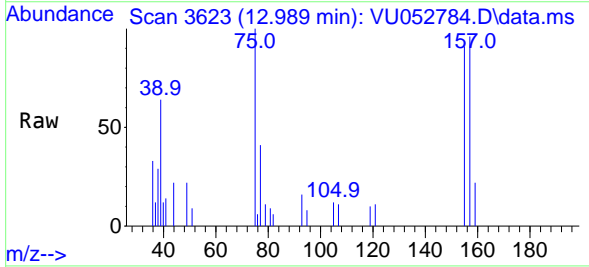
Tgt Ion: 146 Resp: 41290
 Ion Ratio Lower Upper
 146 100
 111 41.5 20.8 62.5
 148 63.6 31.4 94.2

Manual Integrations
APPROVED

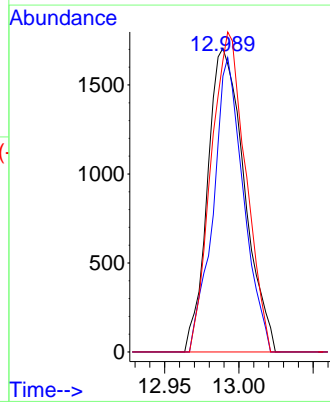
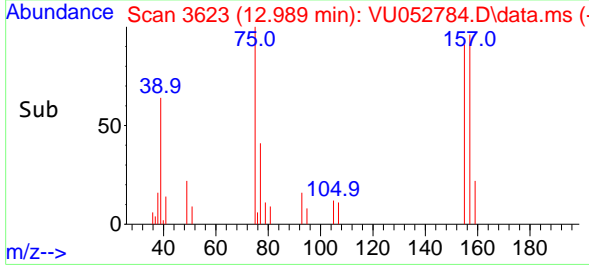
Reviewed By :Krupa Patel 01/27/2023
 Supervised By :Mahesh Dadoda 01/30/2023

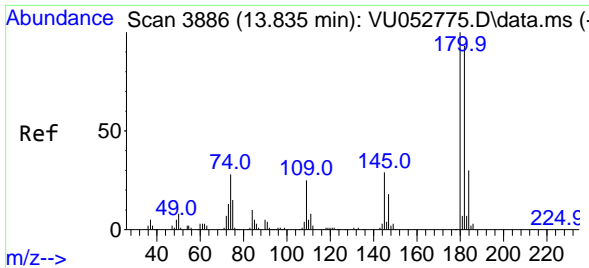


#86
 1,2-Dibromo-3-Chloropropane
 Concen: 1.719 ug/l
 RT: 12.989 min Scan# 3623
 Delta R.T. -0.003 min
 Lab File: VU052784.D
 Acq: 24 Jan 2023 11:55



Tgt Ion: 75 Resp: 2934
 Ion Ratio Lower Upper
 75 100
 155 80.2 66.0 99.0
 157 99.2 85.9 128.9





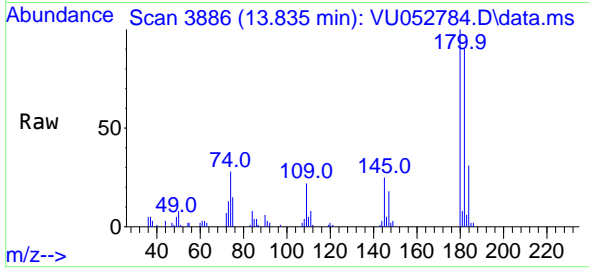
#87
 1,2,4-Trichlorobenzene
 Concen: 1.745 ug/l
 RT: 13.835 min Scan# 3886
 Delta R.T. -0.000 min
 Lab File: VU052784.D
 Acq: 24 Jan 2023 11:55

Instrument :

MSVOA_U

Client Sample Id :

VU0124WBS02

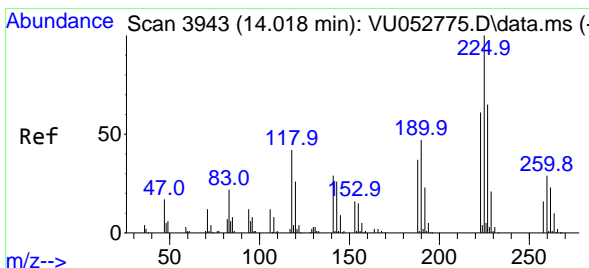
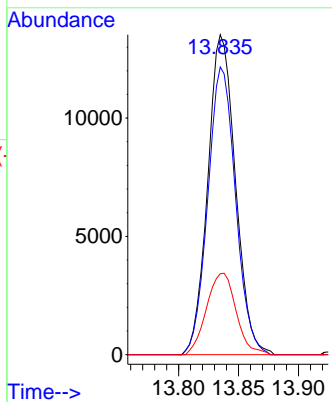
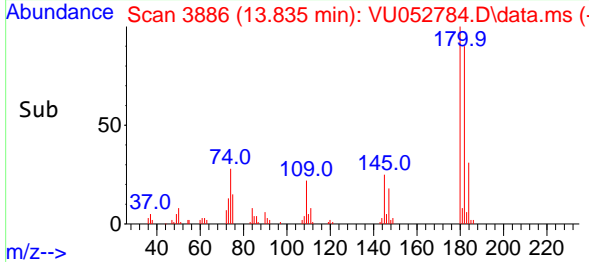


Tgt Ion:180 Resp: 21720
 Ion Ratio Lower Upper
 180 100
 182 90.1 74.6 112.0
 145 27.2 23.4 35.0

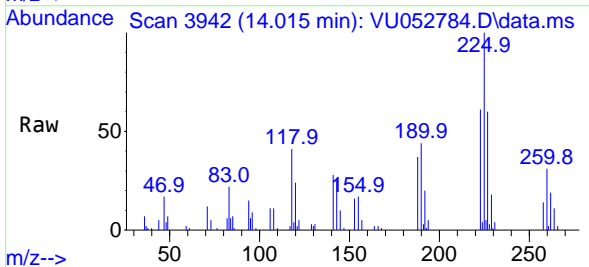
Manual Integrations

APPROVED

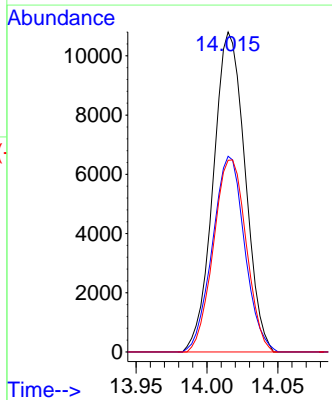
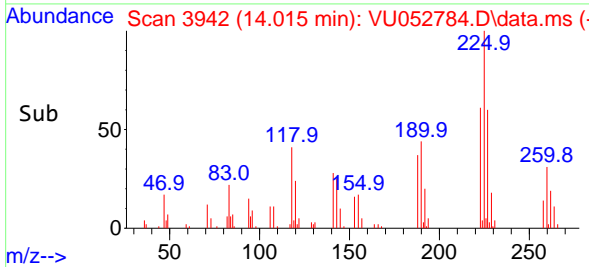
Reviewed By :Krupa Patel 01/27/2023
 Supervised By :Mahesh Dadoda 01/30/2023

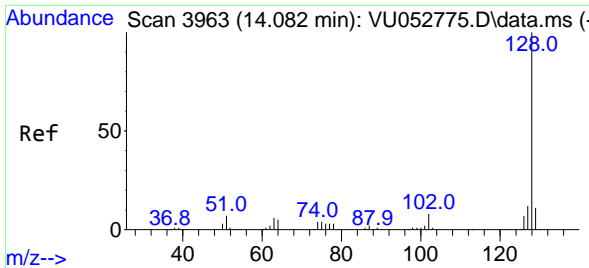


#88
 Hexachlorobutadiene
 Concen: 1.930 ug/l
 RT: 14.015 min Scan# 3942
 Delta R.T. -0.003 min
 Lab File: VU052784.D
 Acq: 24 Jan 2023 11:55



Tgt Ion:225 Resp: 16842
 Ion Ratio Lower Upper
 225 100
 223 62.2 49.8 74.6
 227 61.9 51.5 77.3





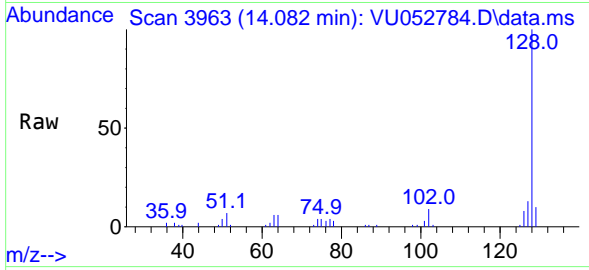
#89
 Naphthalene
 Concen: 1.382 ug/l
 RT: 14.082 min Scan# 3963
 Delta R.T. -0.000 min
 Lab File: VU052784.D
 Acq: 24 Jan 2023 11:55

Instrument :

MSVOA_U

Client Sample Id :

VU0124WBS02



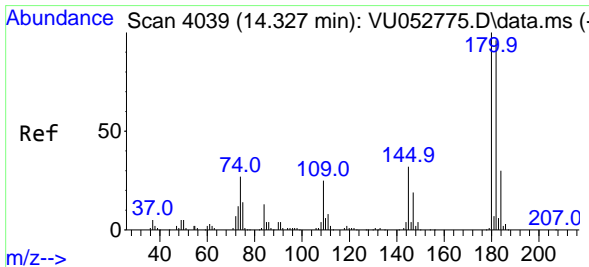
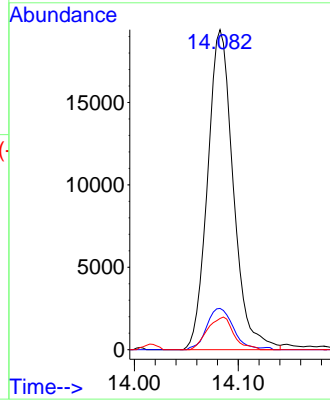
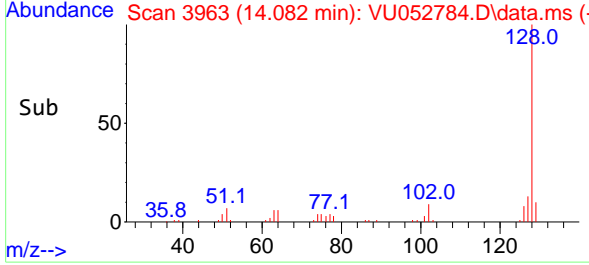
Tgt Ion:128 Resp: 3335
 Ion Ratio Lower Upper
 128 100
 127 13.3 10.2 15.4
 129 10.4 8.6 12.8

Manual Integrations

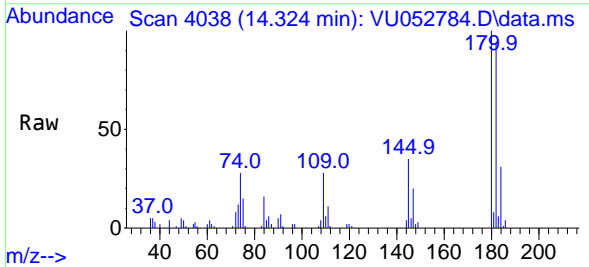
APPROVED

Reviewed By :Krupa Patel 01/27/2023

Supervised By :Mahesh Dadoda 01/30/2023



#90
 1,2,3-Trichlorobenzene
 Concen: 1.660 ug/l
 RT: 14.324 min Scan# 4038
 Delta R.T. -0.003 min
 Lab File: VU052784.D
 Acq: 24 Jan 2023 11:55



Tgt Ion:180 Resp: 19610
 Ion Ratio Lower Upper
 180 100
 182 98.2 77.8 116.6
 145 32.2 25.2 37.8

