

Data Path : Z:\voasrv\HPCHEM1\MSVOA\_U\Data\VU012624\  
 Data File : VU057701.D  
 Acq On : 26 Jan 2024 18:57  
 Operator : MD/SY  
 Sample : P1230-02  
 Misc : 25.0mL/MSVOA\_U/WATER  
 ALS Vial : 25 Sample Multiplier: 1

Instrument :  
 MSVOA\_U  
 ClientSampleId :  
 C0BE3

Integration Parameters: rteint.p  
 Integrator: RTE  
 Smoothing : ON Filtering: 5  
 Sampling : 1 Min Area: 3 % of largest Peak  
 Start Thrs: 0.1 Max Peaks: 100  
 Stop Thrs : 0 Peak Location: TOP

If leading or trailing edge < 100 prefer < Baseline drop else tangent >  
 Peak separation: 5

Method : Z:\voasrv\HPCHEM1\MSVOA\_U\Method\SFAMUTR012324WMA.M  
 Title : TRACE VOA SFAM1.0

Signal : TIC: VU057701.D\data.ms

peak #	R.T. min	first scan	max scan	last scan	PK TY	peak height	corr. area	corr. % max.	% of total
1	1.596	87	95	106	rVB	14887	16885	2.75%	0.844%
2	1.731	129	137	146	rVB	6757	8106	1.32%	0.405%
3	1.911	185	193	205	rBV	14910	20615	3.35%	1.031%
4	2.560	385	395	409	rVB	27796	44631	7.26%	2.231%
5	3.181	575	588	626	rBV2	9611	31429	5.11%	1.571%
6	4.628	1024	1038	1067	rBV2	21851	63013	10.25%	3.150%
7	5.055	1157	1171	1197	rVB2	29369	66544	10.82%	3.326%
8	5.718	1360	1377	1405	rBV2	56767	142650	23.20%	7.131%
9	6.242	1528	1540	1574	rBV	74362	140979	22.93%	7.047%
10	6.685	1663	1678	1694	rBV	35410	67973	11.05%	3.398%
11	7.563	1941	1951	1968	rBV	18381	31819	5.17%	1.591%
12	7.894	2041	2054	2078	rBV	70017	121549	19.77%	6.076%
13	8.177	2132	2142	2158	rBV	10262	17027	2.77%	0.851%
14	8.547	2244	2257	2273	rBV	367726	614954	100.00%	30.741%
15	8.631	2273	2283	2314	rVB3	72314	145086	23.59%	7.253%
16	9.412	2514	2526	2550	rBV	98550	169244	27.52%	8.460%
17	10.753	2932	2943	2956	rBV	24252	39113	6.36%	1.955%
18	11.807	3261	3271	3292	rBV	98208	157227	25.57%	7.860%
19	12.190	3379	3390	3404	rBV	62308	101590	16.52%	5.078%

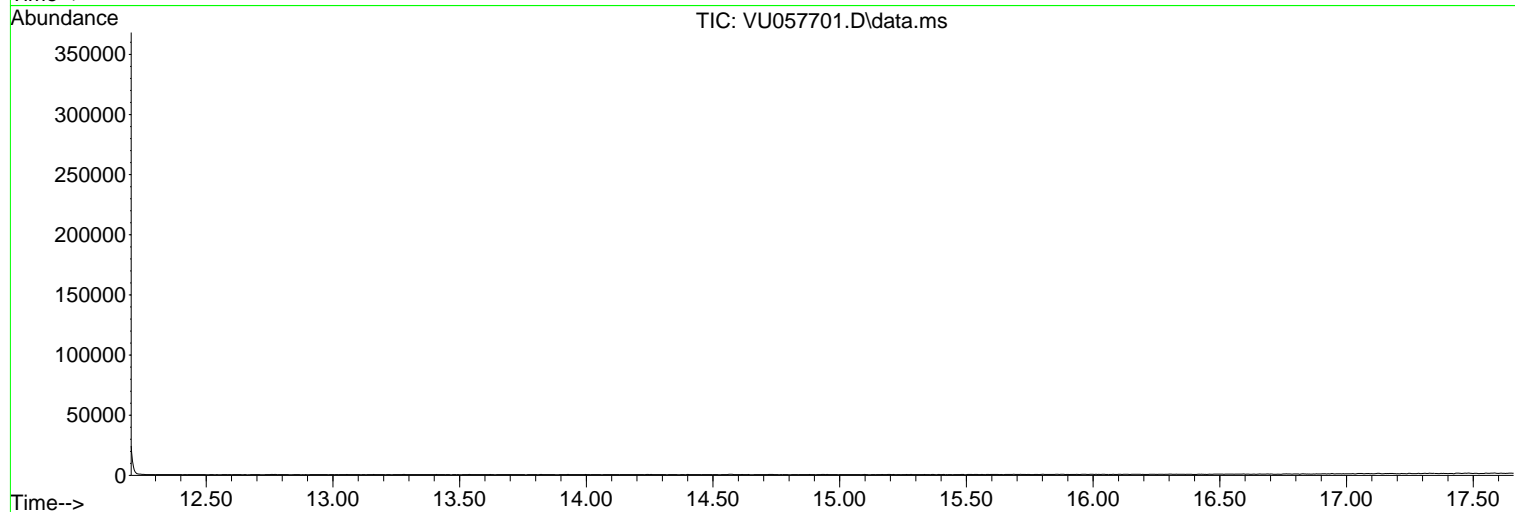
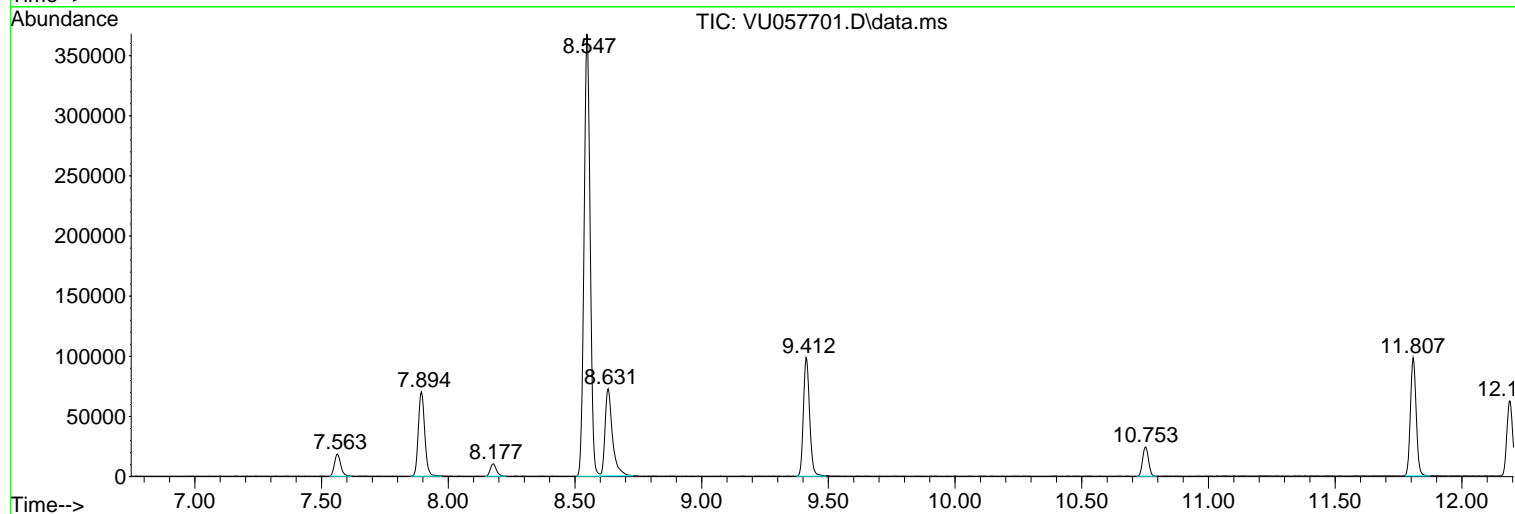
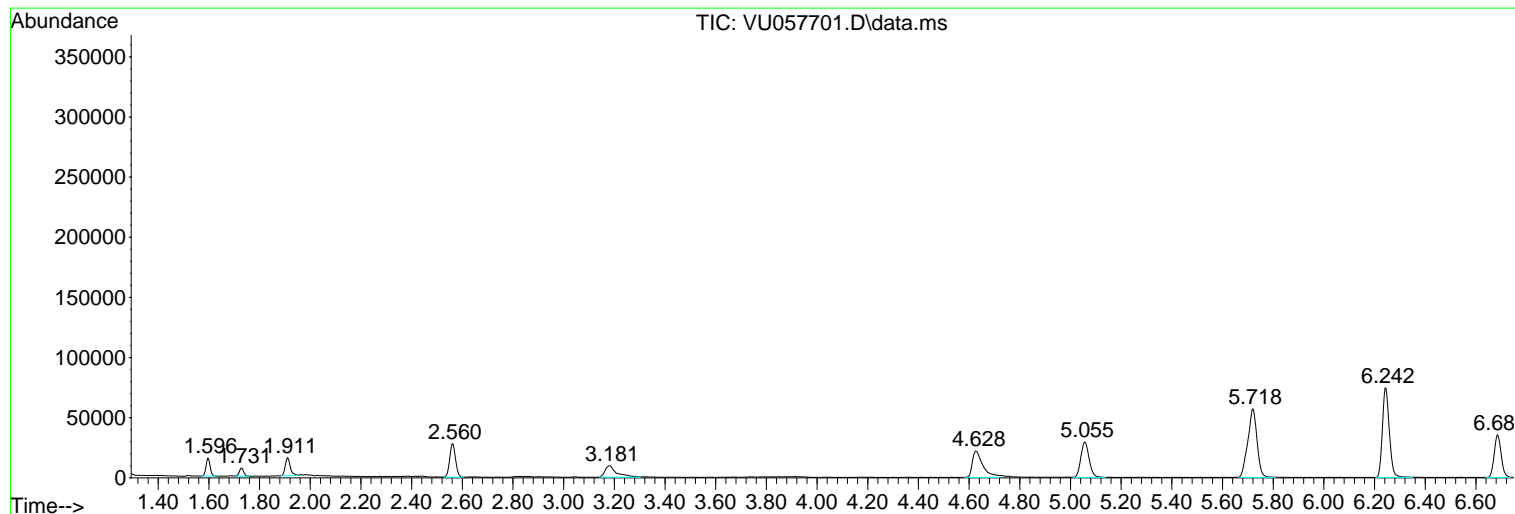
Sum of corrected areas: 2000434

Data Path : Z:\voasrv\HPCHEM1\MSVOA\_U\Data\VU012624\  
Data File : VU057701.D  
Acq On : 26 Jan 2024 18:57  
Operator : MD/SY  
Sample : P1230-02  
Misc : 25.0mL/MSVOA\_U/WATER  
ALS Vial : 25 Sample Multiplier: 1

Instrument :  
MSVOA\_U  
ClientSampleId :  
C0BE3

Quant Method : Z:\voasrv\HPCHEM1\MSVOA\_U\Method\SFAMUTR012324WMA.M  
Quant Title : TRACE VOA SFAM1.0

TIC Library : C:\Database\NIST20.L  
TIC Integration Parameters: LSCINT.P



Library Search Compound Report

Data Path : Z:\voasrv\HPCHEM1\MSVOA\_U\Data\VU012624\  
Data File : VU057701.D  
Acq On : 26 Jan 2024 18:57  
Operator : MD/SY  
Sample : P1230-02  
Misc : 25.0mL/MSVOA\_U/WATER  
ALS Vial : 25 Sample Multiplier: 1

Instrument :  
MSVOA\_U  
ClientSampleId :  
C0BE3

Quant Method : Z:\voasrv\HPCHEM1\MSVOA\_U\Method\SFAMUTR012324WMA.M  
Quant Title : TRACE VOA SFAM1.0

TIC Library : C:\Database\NIST20.L  
TIC Integration Parameters: LSCINT.P

No Library Search Compounds Detected

\*\*\*\*\*

Data Path : Z:\voasrv\HPCHEM1\MSVOA\_U\Data\VU012624\  
Data File : VU057701.D  
Acq On : 26 Jan 2024 18:57  
Operator : MD/SY  
Sample : P1230-02  
Misc : 25.0mL/MSVOA\_U/WATER  
ALS Vial : 25 Sample Multiplier: 1

Instrument :  
MSVOA\_U  
ClientSampleId :  
C0BE3

Quant Method : Z:\voasrv\HPCHEM1\MSVOA\_U\Method\SFAMUTR012324WMA.M  
Quant Title : TRACE VOA SFAM1.0

TIC Library : C:\Database\NIST0.L  
TIC Integration Parameters: LSCINT.P

TIC Top Hit name	RT	EstConc	Units	Response	--Internal Standard--		
					#	RT	Resp Conc

---