

Data Path : Z:\VOASRV\HPCHEM1\MSVOA U\DATA\VU012920\
 Data File : VU036581.D
 Acq On : 28 Jan 2020 19:10
 Operator : JC/MD
 Sample : VSTDICV050
 Misc : 5.0mL/MSVOA U/WATER
 ALS Vial : 8 Sample Multiplier: 1

Instrument :
 MSVOA_U
 ClientSampled :

Quant Time: Jan 29 05:02:32 2020
 Quant Method : Z:\VOASRV\HPCHEM1\MSVOA_U\METHOD\SOMULM012920WMA.M
 Quant Title : VOC Analysis
 QLast Update : Wed Jan 29 04:26:52 2020
 Response via : Initial Calibration

Internal Standards	R.T.	QIon	Response	Conc	Units	Dev(Min)
1) 1,4-Difluorobenzene	6.29	114	276777	50.00	ug/L	0.00
28) Chlorobenzene-d5	9.45	117	258904	50.00	ug/L	0.00
60) 1,4-Dichlorobenzene-d4	11.83	152	126442	50.00	ug/L	0.00

System Monitoring Compounds

4) Vinyl Chloride-d3	1.61	65	106788	51.51	ug/L	0.00
Spiked Amount	50.000	Range	60 - 135	Recovery	=	103.02%
7) Chloroethane-d5	1.93	69	90811	51.05	ug/L	0.00
Spiked Amount	50.000	Range	70 - 130	Recovery	=	102.10%
11) 1,1-Dichloroethene-d2	2.60	63	171887	51.28	ug/L	0.00
Spiked Amount	50.000	Range	60 - 125	Recovery	=	102.56%
21) 2-Butanone-d5	4.68	46	128749	104.63	ug/L	0.00
Spiked Amount	100.000	Range	40 - 130	Recovery	=	104.63%
24) Chloroform-d	5.11	84	173705	51.17	ug/L	0.00
Spiked Amount	50.000	Range	70 - 125	Recovery	=	102.34%
26) 1,2-Dichloroethane-d4	5.75	65	106426	50.30	ug/L	0.00
Spiked Amount	50.000	Range	70 - 125	Recovery	=	100.60%
32) Benzene-d6	5.77	84	378550	51.98	ug/L	0.00
Spiked Amount	50.000	Range	70 - 125	Recovery	=	103.96%
36) 1,2-Dichloropropane-d6	6.73	67	118487	52.21	ug/L	0.00
Spiked Amount	50.000	Range	70 - 120	Recovery	=	104.42%
41) Toluene-d8	7.93	98	367077	52.39	ug/L	0.00
Spiked Amount	50.000	Range	80 - 120	Recovery	=	104.78%
43) trans-1,3-Dichloropropene-	8.21	79	56532	52.37	ug/L	0.00
Spiked Amount	50.000	Range	60 - 125	Recovery	=	104.74%
47) 2-Hexanone-d5	8.66	63	113774	108.11	ug/L	0.00
Spiked Amount	100.000	Range	45 - 130	Recovery	=	108.11%
57) 1,1,2,2-Tetrachloroethane-	10.78	84	173665	52.05	ug/L	0.00
Spiked Amount	50.000	Range	65 - 120	Recovery	=	104.10%
64) 1,2-Dichlorobenzene-d4	12.21	152	136006	50.13	ug/L	0.00
Spiked Amount	50.000	Range	80 - 120	Recovery	=	100.26%

Target Compounds

Target Compounds	R.T.	QIon	Response	Conc	Units	Ovalue
2) Dichlorodifluoromethane	1.39	85	103763	49.217	ug/L	100
3) Chloromethane	1.54	50	109558	48.815	ug/L	99
5) Vinyl chloride	1.62	62	122096	51.019	ug/L	100
6) Bromomethane	1.87	94	75473	53.754	ug/L	97
8) Chloroethane	1.95	64	72658	50.377	ug/L	100
9) Trichlorofluoromethane	2.16	101	142869	50.766	ug/L	99
10) 1,1,2-Trichloro-1,2,2-trif	2.61	101	86816	49.630	ug/L	100
12) 1,1-Dichloroethene	2.61	96	87779	51.026	ug/L	94
13) Acetone	2.66	43	112871	94.761	ug/L	99
14) Carbon disulfide	2.82	76	266970	51.364	ug/L	100
15) Methyl Acetate	2.99	43	96197	51.653	ug/L	99
16) Methylene chloride	3.08	84	104067	49.875	ug/L	98
17) trans-1,2-Dichloroethene	3.39	96	94470	51.120	ug/L	99
18) Methyl tert-butyl Ether	3.41	73	296339	50.071	ug/L	99
19) 1,1-Dichloroethane	3.92	63	167519	50.843	ug/L	99
20) cis-1,2-Dichloroethene	4.72	96	108006	51.416	ug/L	99
22) 2-Butanone	4.76	43	146673	102.486	ug/L	99

Data Path : Z:\VOASRV\HPCHEM1\MSVOA U\DATA\VU012920\
 Data File : VU036581.D
 Acq On : 28 Jan 2020 19:10
 Operator : JC/MD
 Sample : VSTDICV050
 Misc : 5.0mL/MSVOA U/WATER
 ALS Vial : 8 Sample Multiplier: 1

Instrument :
 MSVOA_U
 ClientSampled :

Quant Time: Jan 29 05:02:32 2020
 Quant Method : Z:\VOASRV\HPCHEM1\MSVOA_U\METHOD\SOMULM012920WMA.M
 Quant Title : VOC Analysis
 QLast Update : Wed Jan 29 04:26:52 2020
 Response via : Initial Calibration

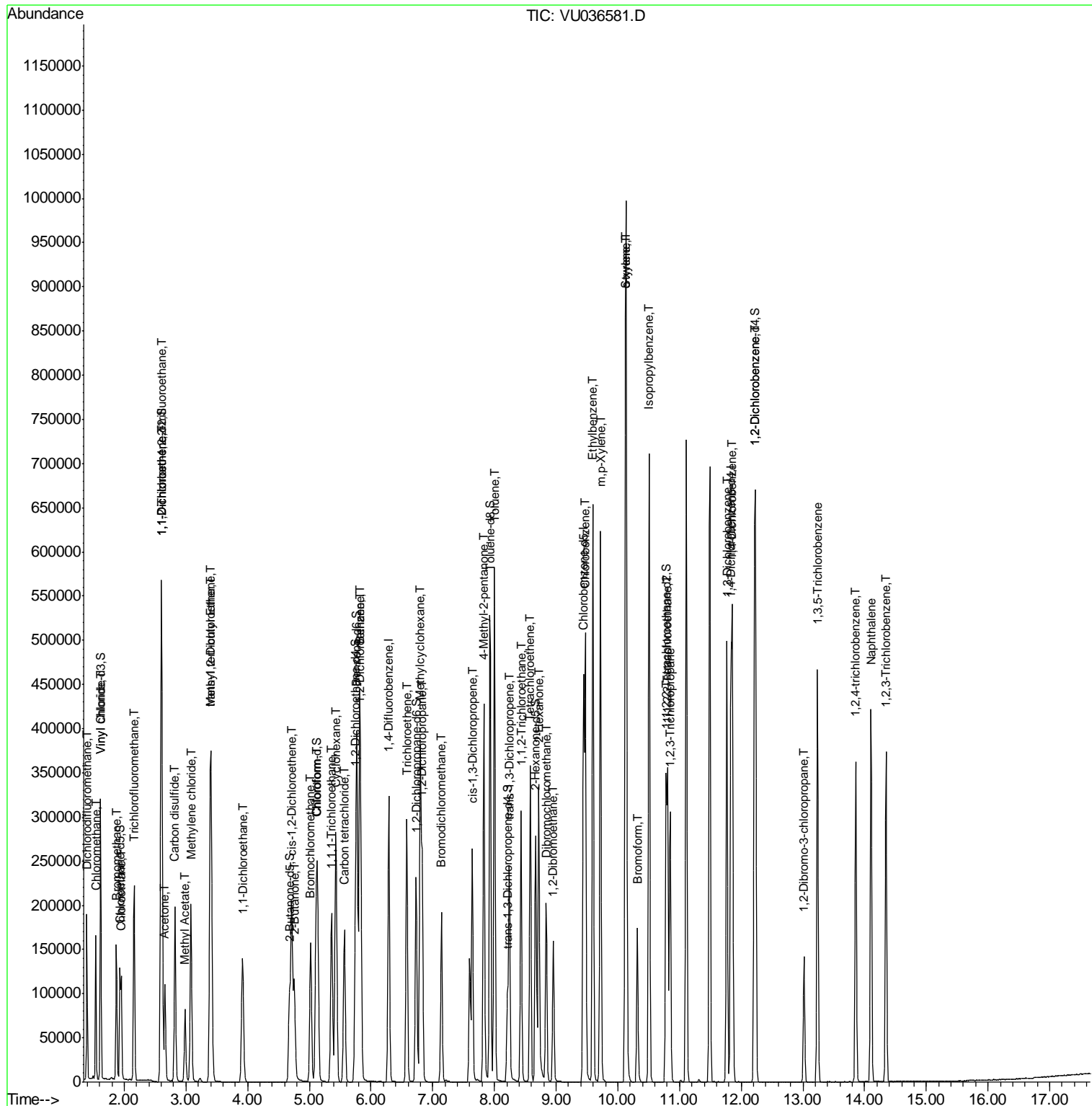
Internal Standards	R.T.	QIon	Response	Conc	Units	Dev(Min)
23) Bromochloromethane	5.02	128	55579	50.928	ug/L	98
25) Chloroform	5.13	83	170834	50.558	ug/L	98
27) 1,2-Dichloroethane	5.84	62	126313	49.954	ug/L	100
29) Cyclohexane	5.43	56	150682	50.861	ug/L	99
30) 1,1,1-Trichloroethane	5.36	97	141442	52.037	ug/L	100
31) Carbon tetrachloride	5.57	117	121424	51.999	ug/L	99
33) Benzene	5.82	78	400312	51.715	ug/L	100
34) Trichloroethene	6.58	95	102628	51.509	ug/L	99
35) Methylcyclohexane	6.80	83	167509	50.408	ug/L	99
37) 1,2-Dichloropropane	6.83	63	100630	51.150	ug/L	99
38) Bromodichloromethane	7.14	83	127986	51.777	ug/L	98
39) cis-1,3-Dichloropropene	7.64	75	160422	50.611	ug/L	100
40) 4-Methyl-2-pentanone	7.83	43	261780	103.650	ug/L	100
42) Toluene	8.00	91	437643	52.016	ug/L	99
44) trans-1,3-Dichloropropene	8.24	75	144438	51.929	ug/L	97
45) 1,1,2-Trichloroethane	8.43	97	100593	50.975	ug/L	99
46) Tetrachloroethene	8.58	164	83399	51.526	ug/L	99
48) 2-Hexanone	8.72	43	203979	107.370	ug/L	99
49) Dibromochloromethane	8.84	129	109867	52.595	ug/L	100
50) 1,2-Dibromoethane	8.95	107	109018	51.250	ug/L	99
51) Chlorobenzene	9.47	112	282035	51.368	ug/L	99
52) Ethylbenzene	9.60	91	477325	51.789	ug/L	99
53) m,p-Xylene	9.72	106	187025	52.026	ug/L	100
54) o-xylene	10.12	106	185756	51.803	ug/L	99
55) Styrene	10.14	104	305864	52.562	ug/L	99
56) Isopropylbenzene	10.51	105	477727	52.401	ug/L	100
58) 1,1,2,2-Tetrachloroethane	10.81	83	174657	51.337	ug/L	99
59) 1,2,3-Trichloropropane	10.85	75	133803	50.311	ug/L	100
61) Bromoform	10.32	173	82847	49.268	ug/L	100
62) 1,3-Dichlorobenzene	11.77	146	215044	50.122	ug/L	98
63) 1,4-Dichlorobenzene	11.86	146	213249	50.486	ug/L	99
65) 1,2-Dichlorobenzene	12.23	146	218435	50.231	ug/L	99
66) 1,2-Dibromo-3-chloropropan	13.02	75	36908	53.158	ug/L	97
67) 1,3,5-Trichlorobenzene	13.24	180	151570	51.438	ug/L	99
68) 1,2,4-trichlorobenzene	13.86	180	116885	55.664	ug/L	99
69) Naphthalene	14.10	128	341591	56.216	ug/L	99
70) 1,2,3-Trichlorobenzene	14.35	180	118929	54.958	ug/L	100

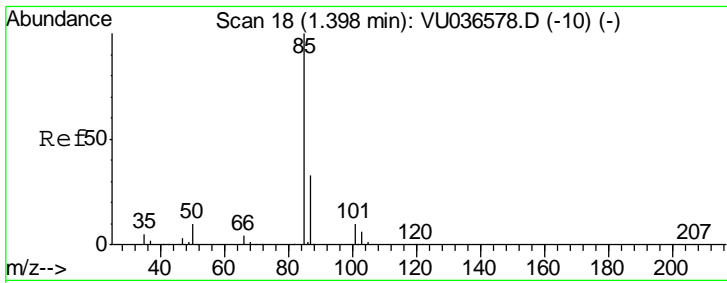
(#) = qualifier out of range (m) = manual integration (+) = signals summed

Data Path : Z:\VOASRV\HPCHEM1\MSVOA U\DATA\VU012920\
 Data File : VU036581.D
 Acq On : 28 Jan 2020 19:10
 Operator : JC/MD
 Sample : VSTDICV050
 Misc : 5.0mL/MSVOA U/WATER
 ALS Vial : 8 Sample Multiplier: 1

Instrument :
 MSVOA_U
 Client Sampled :

Quant Time: Jan 29 05:02:32 2020
 Quant Method : Z:\VOASRV\HPCHEM1\MSVOA_U\METHOD\SOMULM012920WMA.M
 Quant Title : VOC Analysis
 QLast Update : Wed Jan 29 04:26:52 2020
 Response via : Initial Calibration

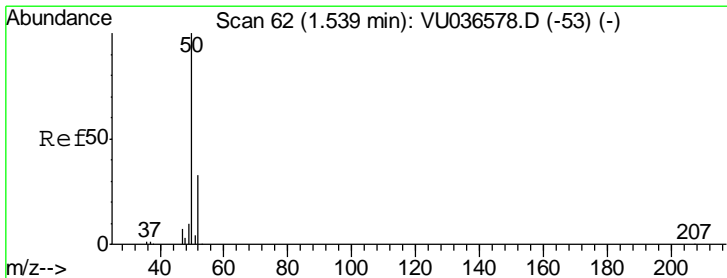
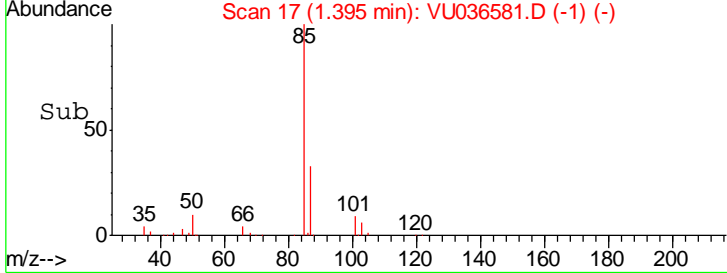
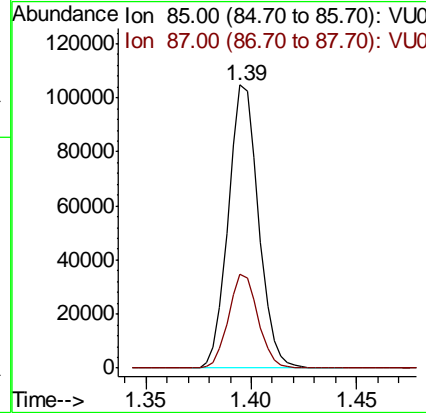
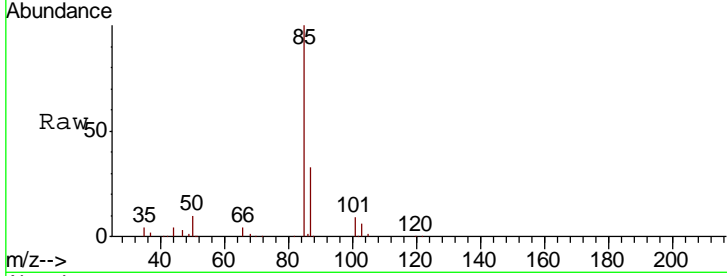




#2
 Dichlorodifluoromethane
 Concen: 49.217 ug/L
 RT: 1.39 min Scan# 17
 Delta R.T. -0.00 min
 Lab File: VU036581.D
 Acq: 28 Jan 2020 19:10

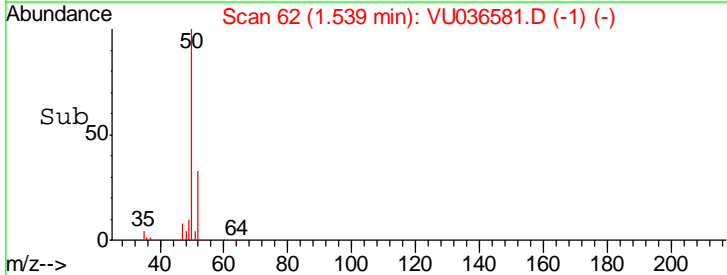
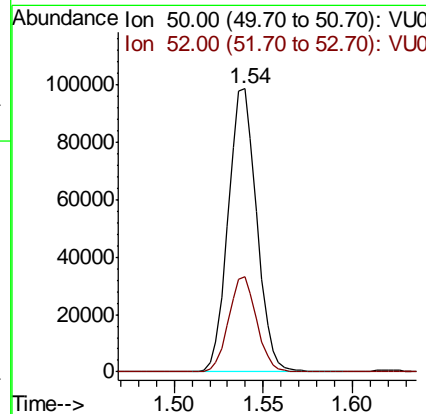
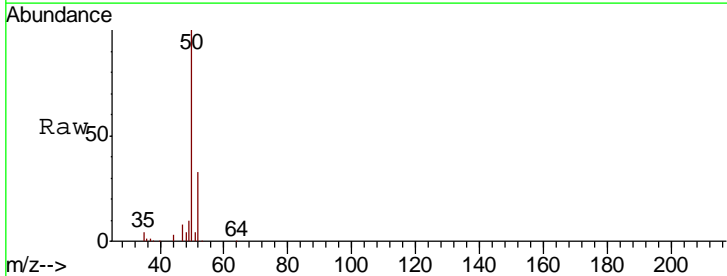
Instrument :
 MSVOA_U
 ClientSampled :

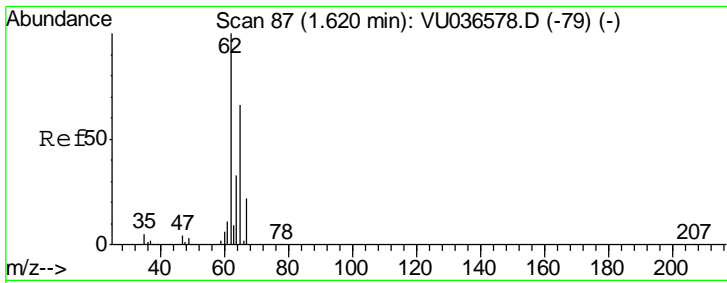
Tgt Ion: 85 Resp: 103763
 Ion Ratio Lower Upper
 85 100
 87 32.5 26.0 39.0



#3
 Chloromethane
 Concen: 48.815 ug/L
 RT: 1.54 min Scan# 62
 Delta R.T. 0.00 min
 Lab File: VU036581.D
 Acq: 28 Jan 2020 19:10

Tgt Ion: 50 Resp: 109558
 Ion Ratio Lower Upper
 50 100
 52 33.4 23.2 43.0

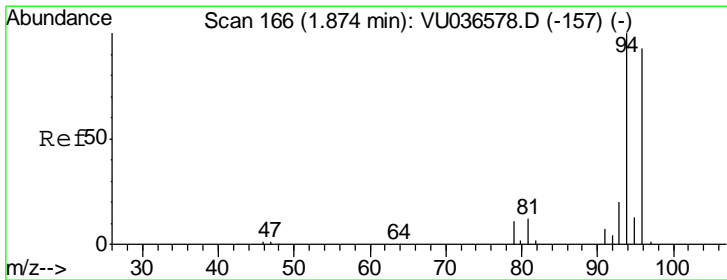
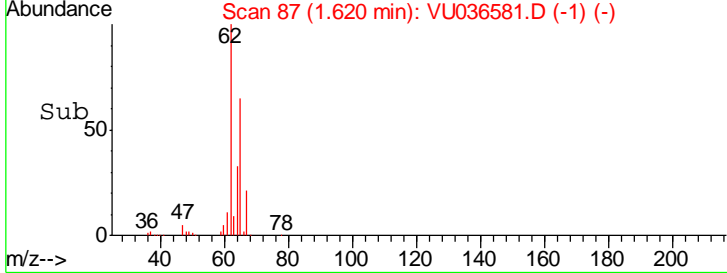
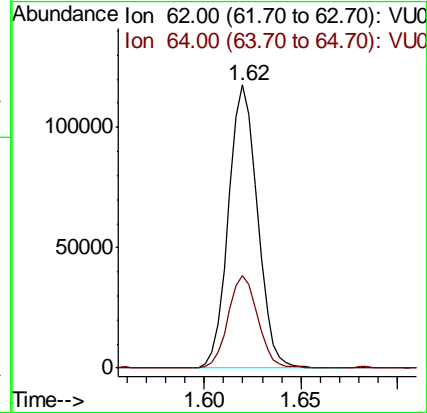
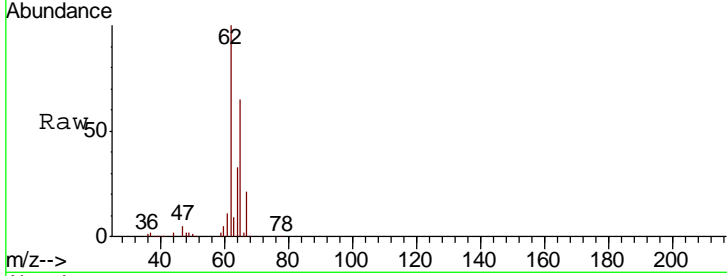




#5
 Vinyl chloride
 Concen: 51.019 ug/L
 RT: 1.62 min Scan# 87
 Delta R.T. 0.00 min
 Lab File: VU036581.D
 Acq: 28 Jan 2020 19:10

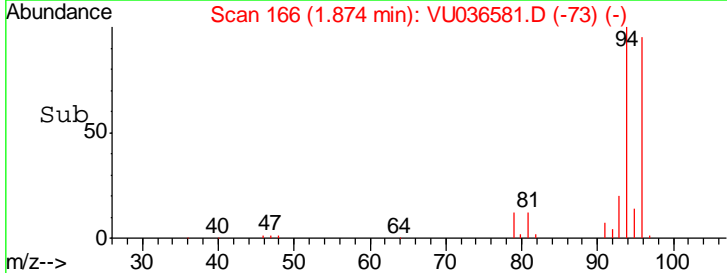
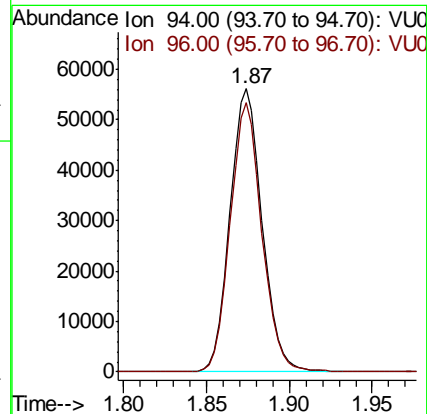
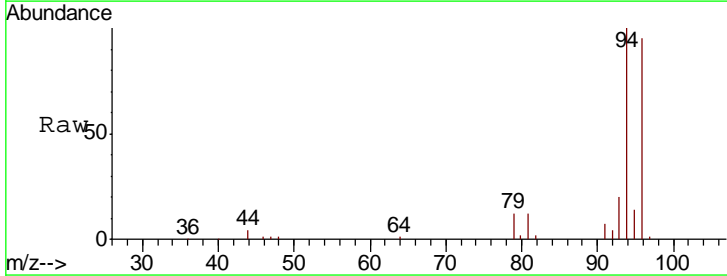
Instrument :
 MSVOA_U
 ClientSampled :

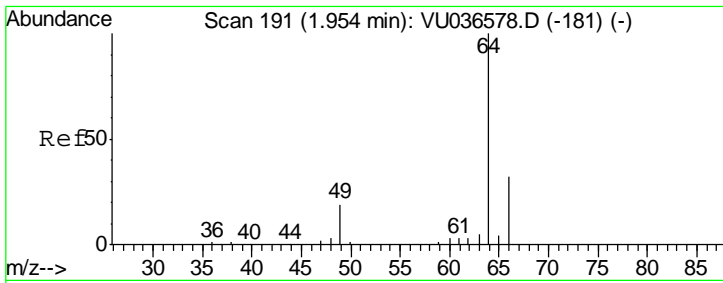
Tgt Ion	Resp	Lower	Upper
62	122096		
64	32.7	22.9	42.5



#6
 Bromomethane
 Concen: 53.754 ug/L
 RT: 1.87 min Scan# 166
 Delta R.T. 0.00 min
 Lab File: VU036581.D
 Acq: 28 Jan 2020 19:10

Tgt Ion	Resp	Lower	Upper
94	75473		
96	95.3	64.8	120.4



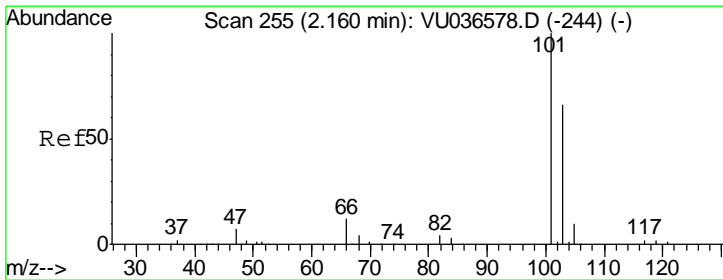
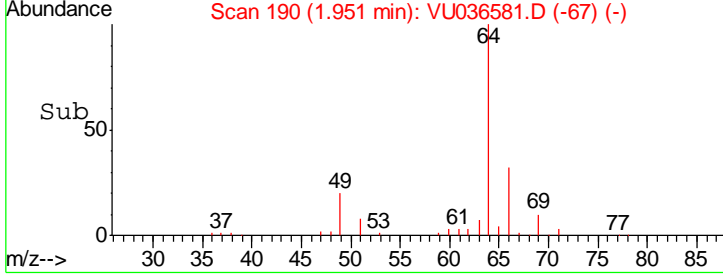
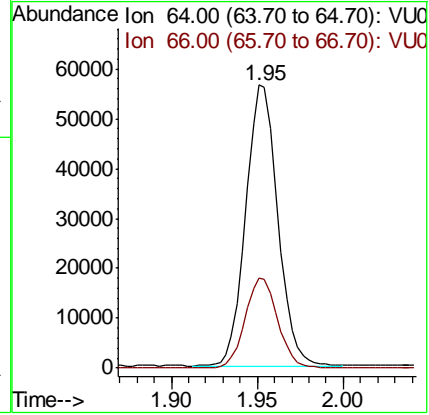
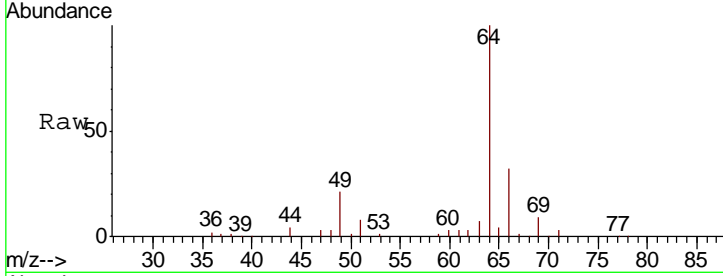


#8
 Chloroethane
 Concen: 50.377 ug/L
 RT: 1.95 min Scan# 190
 Delta R.T. -0.00 min
 Lab File: VU036581.D
 Acq: 28 Jan 2020 19:10

Instrument :
 MSVOA_U
 ClientSampled :

Tgt Ion: 64 Resp: 72658

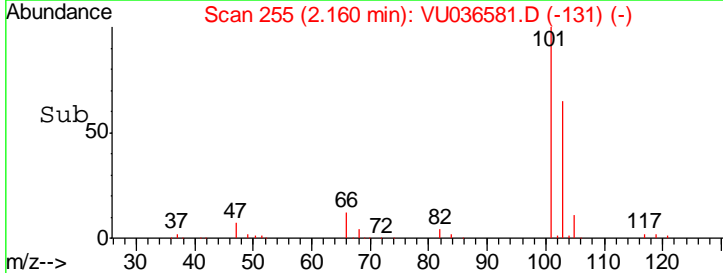
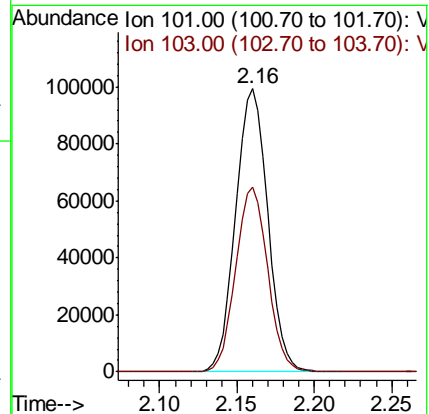
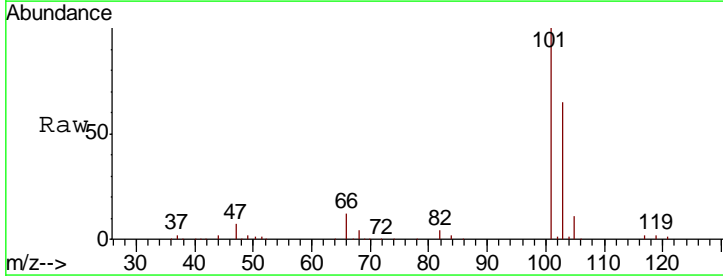
Ion	Ratio	Lower	Upper
64	100		
66	32.0	22.4	41.6

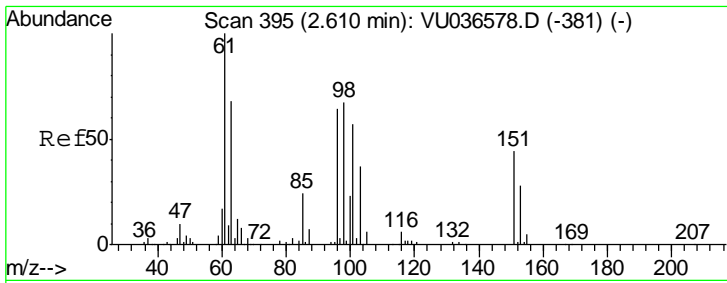


#9
 Trichlorofluoromethane
 Concen: 50.766 ug/L
 RT: 2.16 min Scan# 255
 Delta R.T. 0.00 min
 Lab File: VU036581.D
 Acq: 28 Jan 2020 19:10

Tgt Ion: 101 Resp: 142869

Ion	Ratio	Lower	Upper
101	100		
103	65.0	52.4	78.6





#10

1,1,2-Trichloro-1,2,2-trifluoroethane

Concen: 49.630 ug/L

RT: 2.61 min Scan# 394

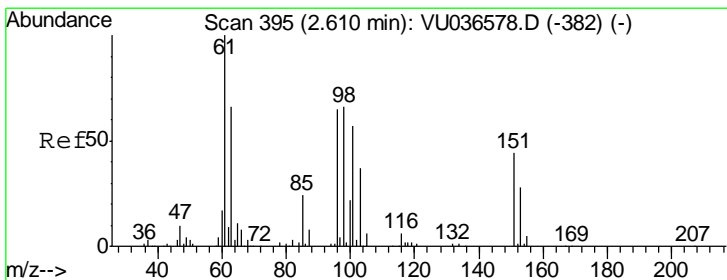
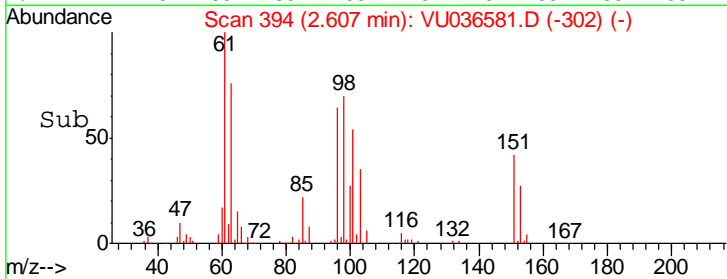
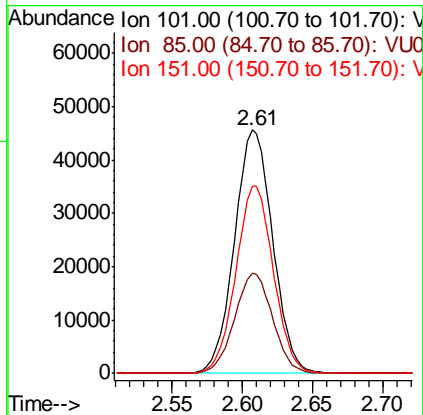
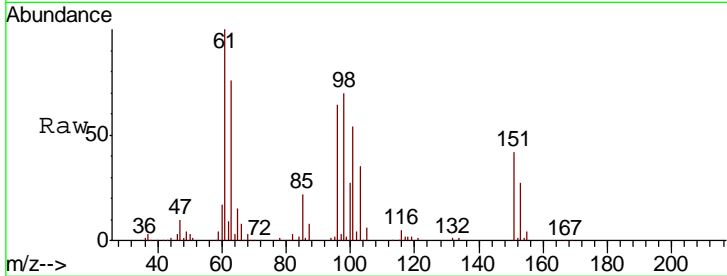
Delta R.T. -0.00 min

Lab File: VU036581.D

Acq: 28 Jan 2020 19:10

Instrument :
MSVOA_U
ClientSampled :

Tgt Ion	Resp	Lower	Upper
101	86816		
101	100		
85	40.8	32.6	49.0
151	75.5	60.3	90.5



#12

1,1-Dichloroethene

Concen: 51.026 ug/L

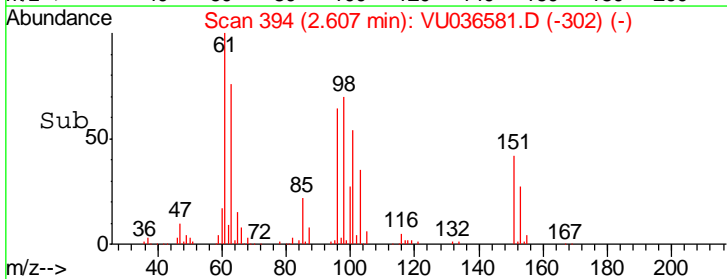
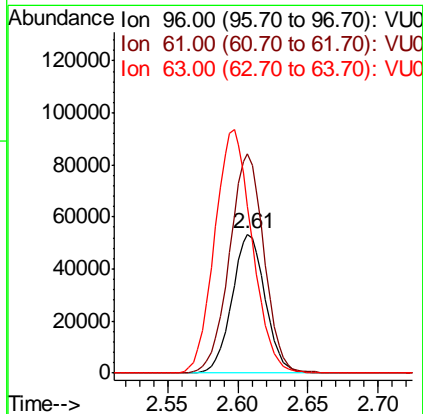
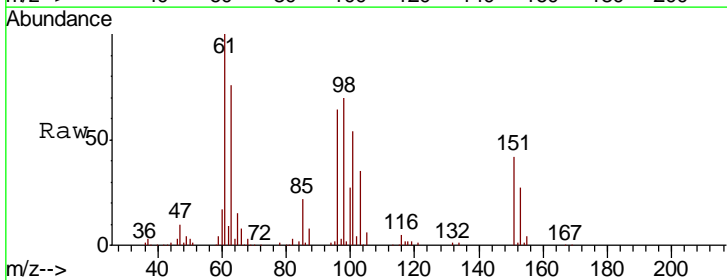
RT: 2.61 min Scan# 394

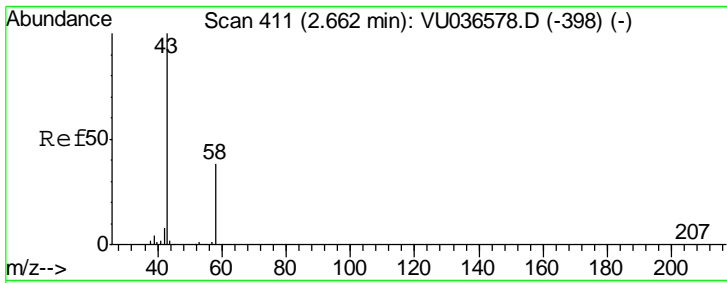
Delta R.T. -0.00 min

Lab File: VU036581.D

Acq: 28 Jan 2020 19:10

Tgt Ion	Resp	Lower	Upper
96	87779		
96	100		
61	157.4	108.6	201.8
63	119.9	75.0	139.2

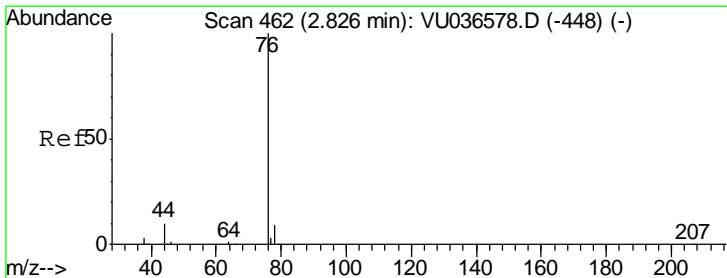
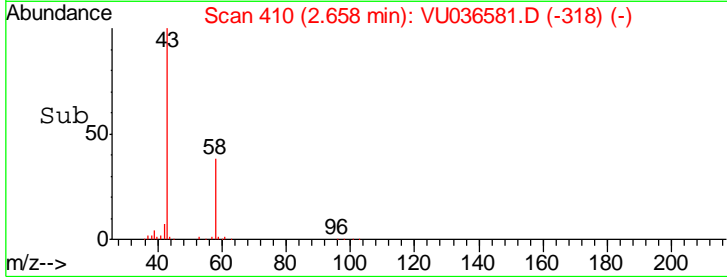
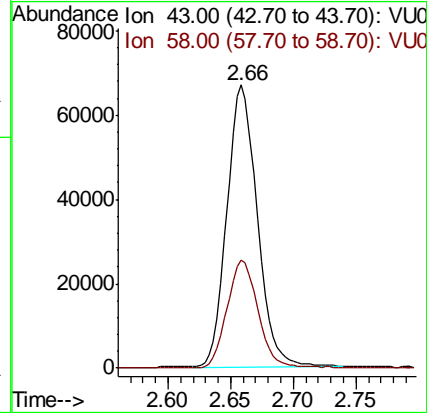
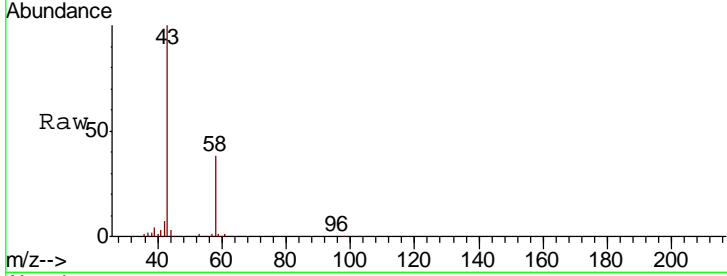




#13
 Acetone
 Concen: 94.761 ug/L
 RT: 2.66 min Scan# 410
 Delta R.T. -0.00 min
 Lab File: VU036581.D
 Acq: 28 Jan 2020 19:10

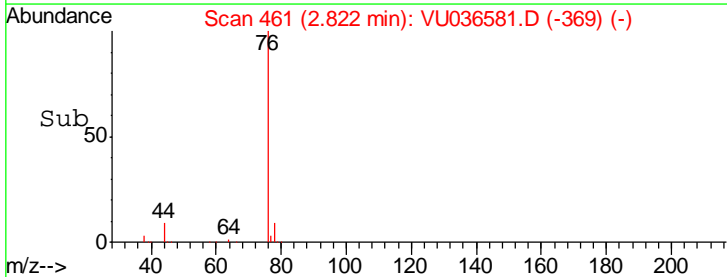
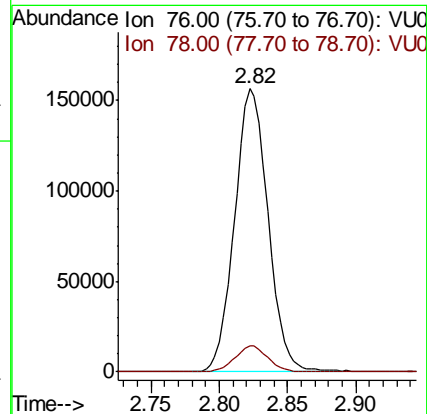
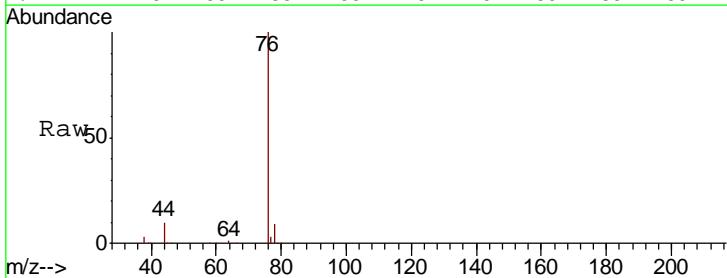
Instrument :
 MSVOA_U
 ClientSampled :

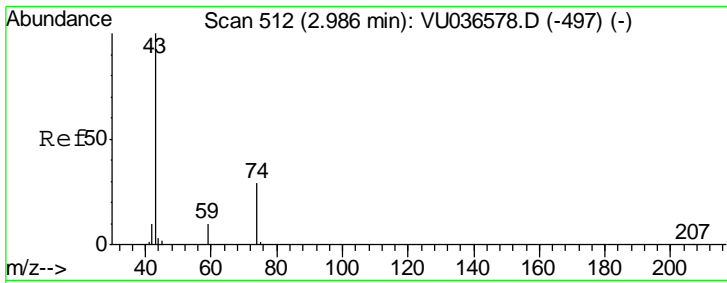
Tgt Ion	Resp	Lower	Upper
43	112871		
58	38.2	0.0	75.4



#14
 Carbon disulfide
 Concen: 51.364 ug/L
 RT: 2.82 min Scan# 461
 Delta R.T. -0.00 min
 Lab File: VU036581.D
 Acq: 28 Jan 2020 19:10

Tgt Ion	Resp	Lower	Upper
76	266970		
78	9.2	7.2	10.8

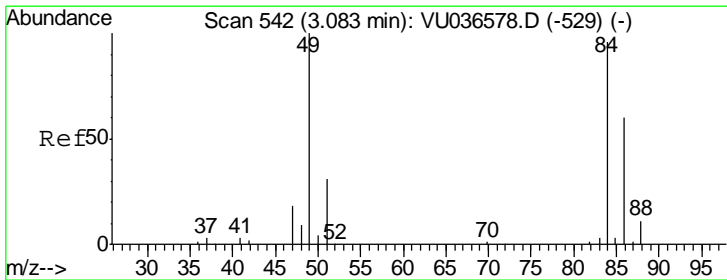
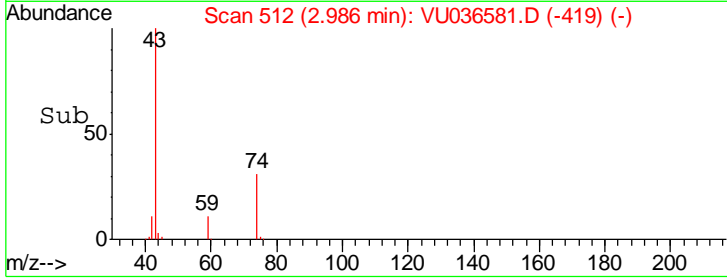
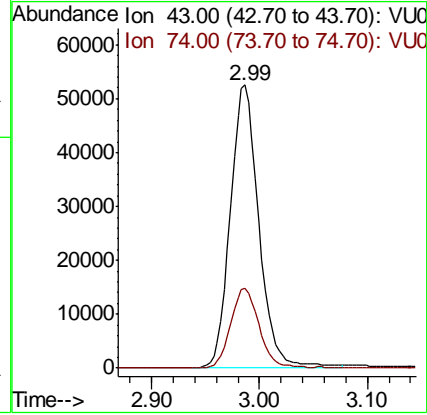
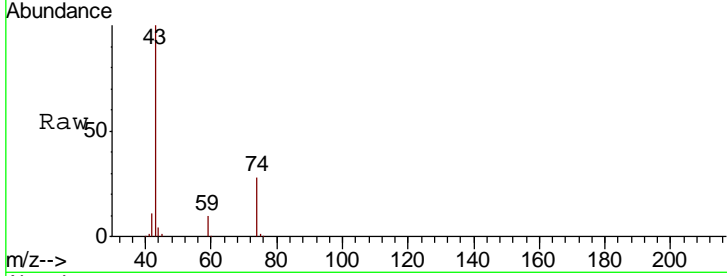




#15
 Methyl Acetate
 Concen: 51.653 ug/L
 RT: 2.99 min Scan# 512
 Delta R.T. 0.00 min
 Lab File: VU036581.D
 Acq: 28 Jan 2020 19:10

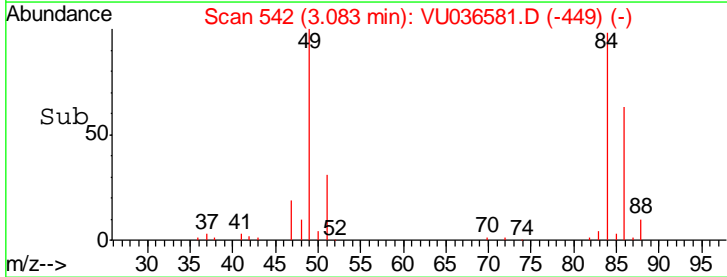
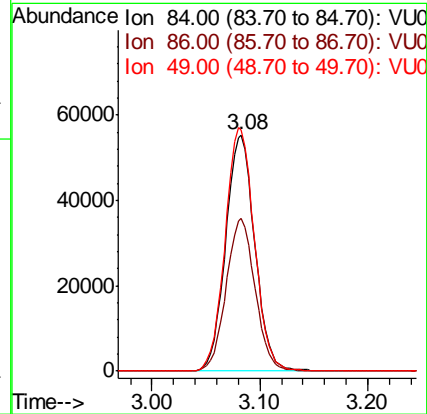
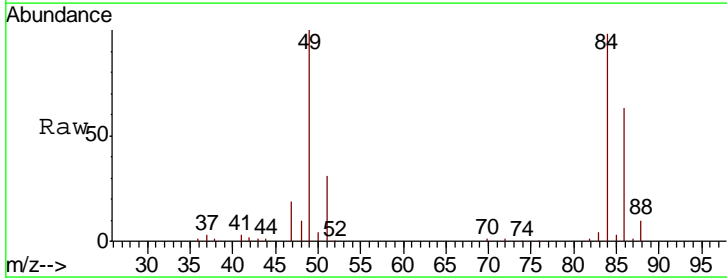
Instrument :
 MSVOA_U
 ClientSampled :

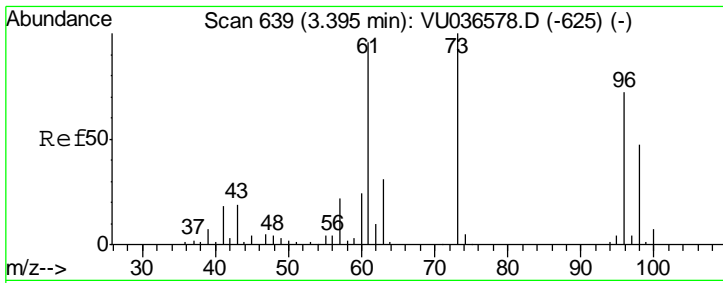
Tgt Ion	Resp	Lower	Upper
43	96197		
74	28.3	23.3	34.9



#16
 Methylene chloride
 Concen: 49.875 ug/L
 RT: 3.08 min Scan# 542
 Delta R.T. 0.00 min
 Lab File: VU036581.D
 Acq: 28 Jan 2020 19:10

Tgt Ion	Resp	Lower	Upper
84	104067		
86	64.5	44.1	81.9
49	101.8	73.3	136.1

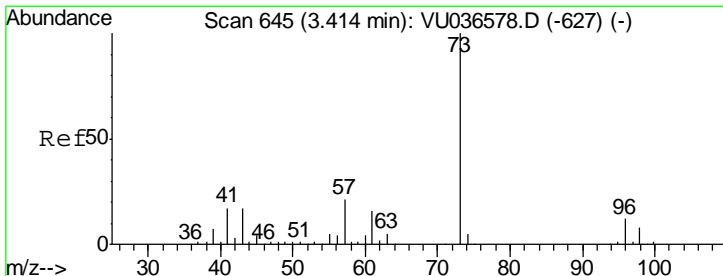
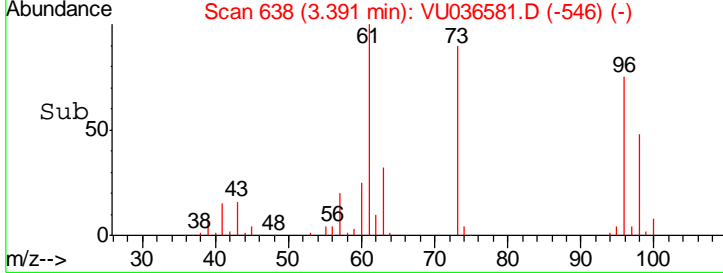
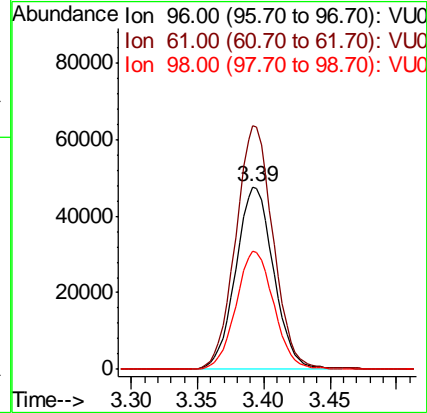
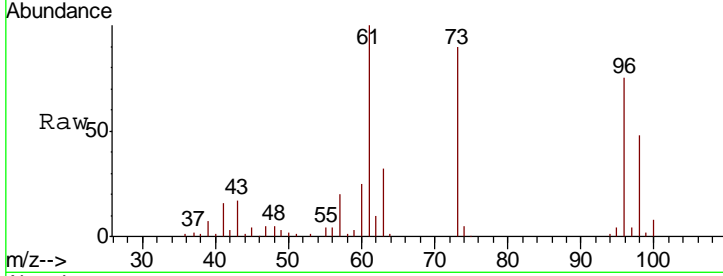




#17
 trans-1,2-Dichloroethene
 Concen: 51.120 ug/L
 RT: 3.39 min Scan# 638
 Delta R.T. -0.00 min
 Lab File: VU036581.D
 Acq: 28 Jan 2020 19:10

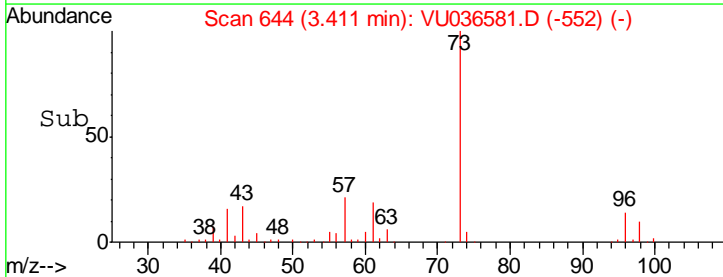
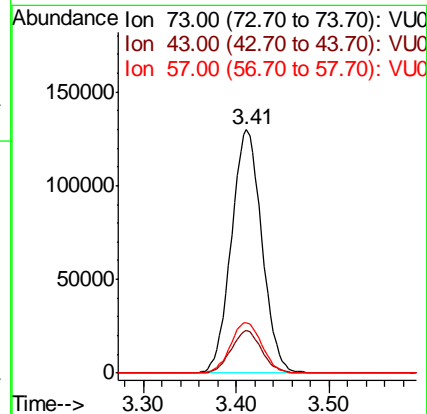
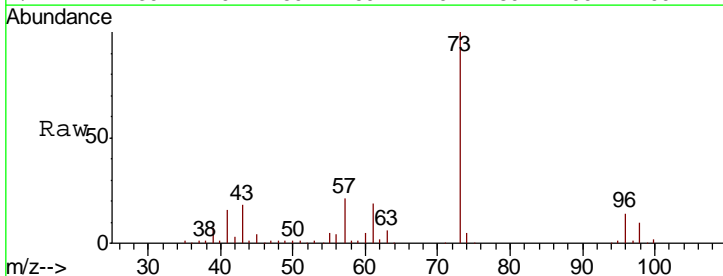
Instrument : MSVOA_U
 ClientSampled :

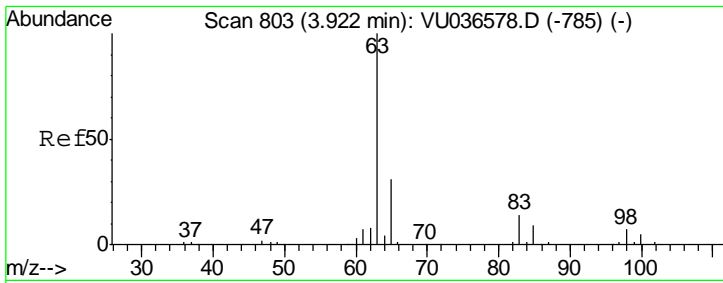
Tgt Ion	Resp	Lower	Upper
96	94470		
61	133.2	93.4	173.4
98	64.5	46.1	85.5



#18
 Methyl tert-butyl Ether
 Concen: 50.071 ug/L
 RT: 3.41 min Scan# 644
 Delta R.T. -0.00 min
 Lab File: VU036581.D
 Acq: 28 Jan 2020 19:10

Tgt Ion	Resp	Lower	Upper
73	296339		
43	17.5	14.2	21.4
57	21.4	17.3	25.9

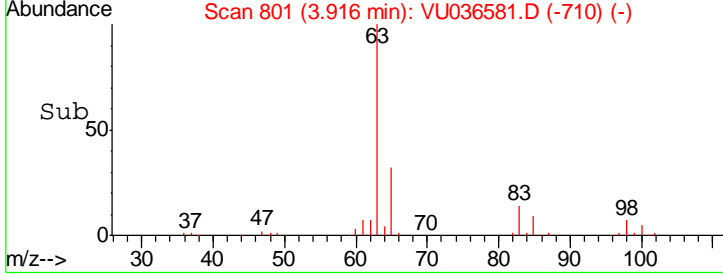
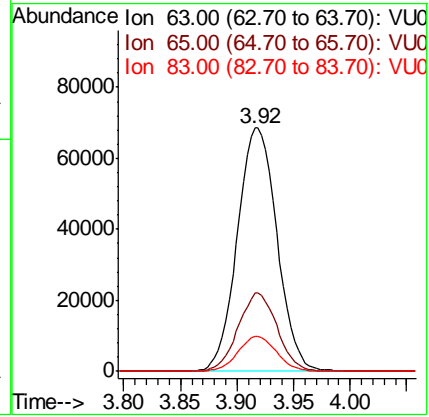
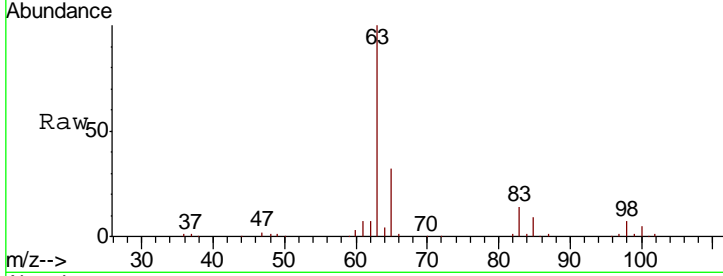




#19
 1,1-Dichloroethane
 Concen: 50.843 ug/L
 RT: 3.92 min Scan# 801
 Delta R.T. -0.01 min
 Lab File: VU036581.D
 Acq: 28 Jan 2020 19:10

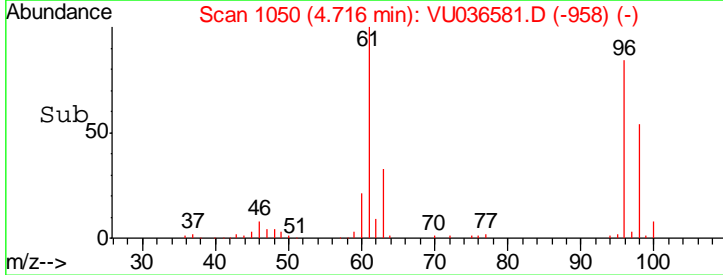
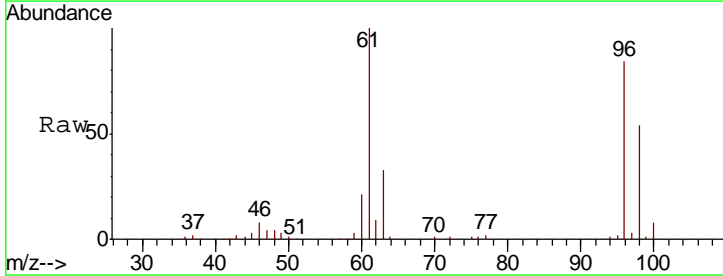
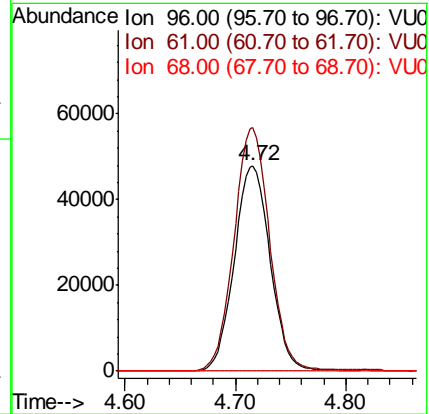
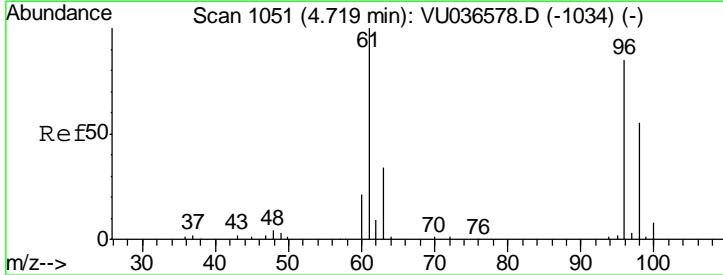
Instrument :
 MSVOA_U
 ClientSampled :

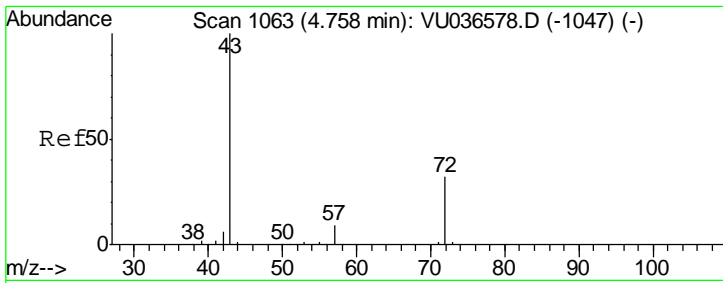
Tgt Ion	Resp	Lower	Upper
63	167519		
65	32.0	21.9	40.7
83	14.2	9.7	17.9



#20
 cis-1,2-Dichloroethene
 Concen: 51.416 ug/L
 RT: 4.72 min Scan# 1050
 Delta R.T. -0.00 min
 Lab File: VU036581.D
 Acq: 28 Jan 2020 19:10

Tgt Ion	Resp	Lower	Upper
96	108006		
61	118.4	82.2	152.6
68	0.0	0.0	0.0

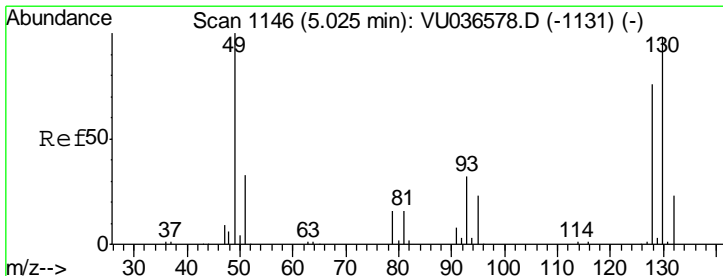
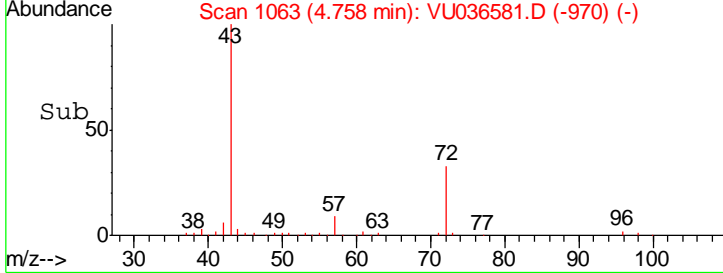
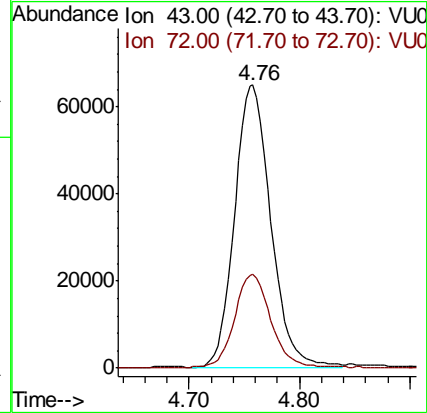
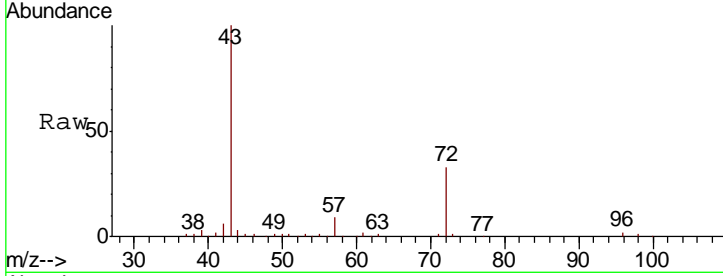




#22
 2-Butanone
 Concen: 102.486 ug/L
 RT: 4.76 min Scan# 1063
 Delta R.T. 0.00 min
 Lab File: VU036581.D
 Acq: 28 Jan 2020 19:10

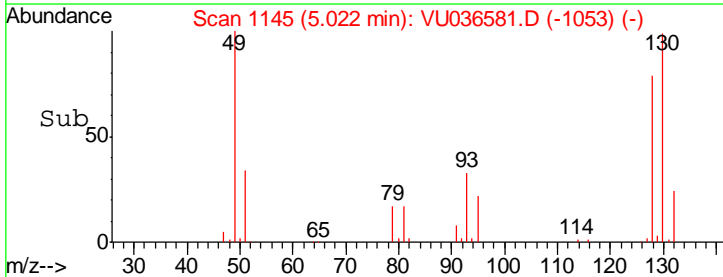
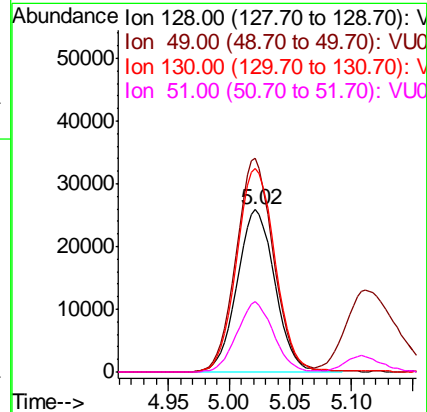
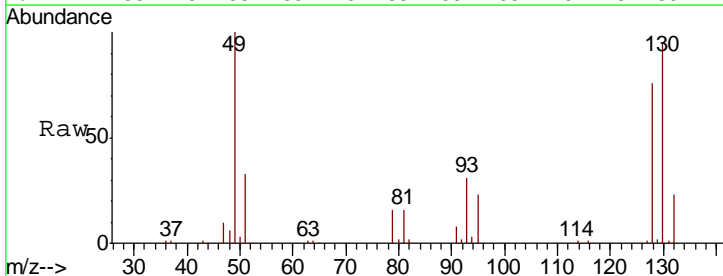
Instrument :
 MSVOA_U
 ClientSampled :

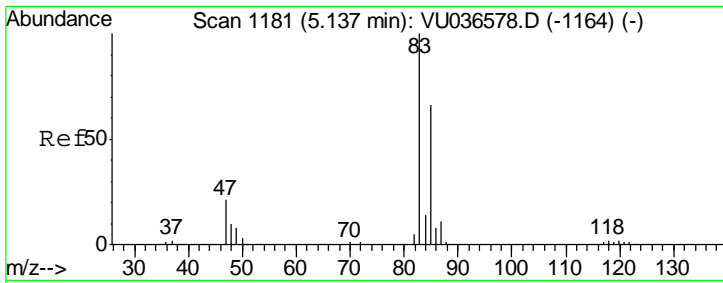
Tgt Ion	Resp	Lower	Upper
43	146673		
72	34.1	16.7	50.1



#23
 Bromochloromethane
 Concen: 50.928 ug/L
 RT: 5.02 min Scan# 1145
 Delta R.T. -0.00 min
 Lab File: VU036581.D
 Acq: 28 Jan 2020 19:10

Tgt Ion	Resp	Lower	Upper
128	55579		
49	131.8	92.5	171.9
130	125.5	90.4	168.0
51	43.1	34.6	52.0

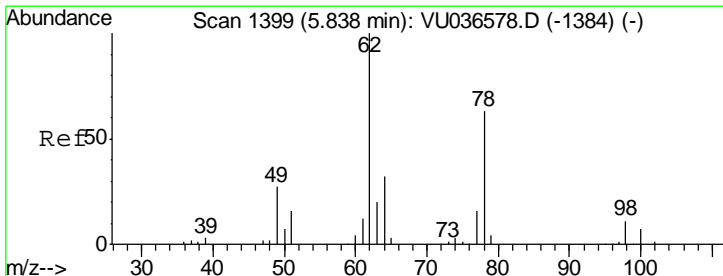
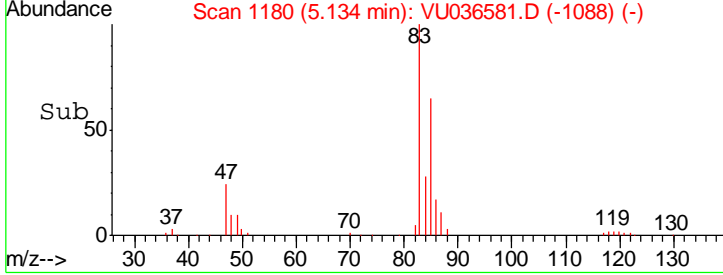
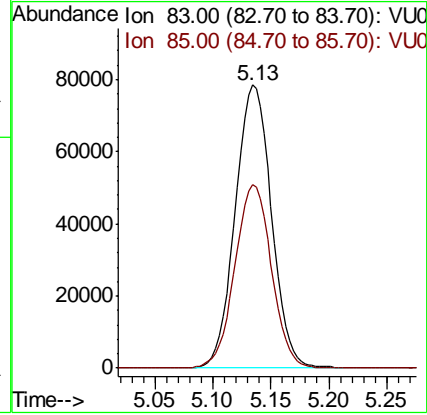
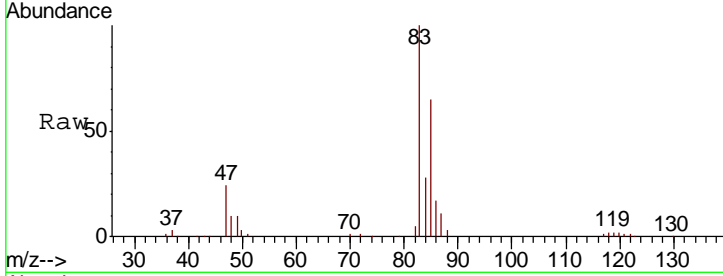




#25
 Chloroform
 Concen: 50.558 ug/L
 RT: 5.13 min Scan# 1180
 Delta R.T. -0.00 min
 Lab File: VU036581.D
 Acq: 28 Jan 2020 19:10

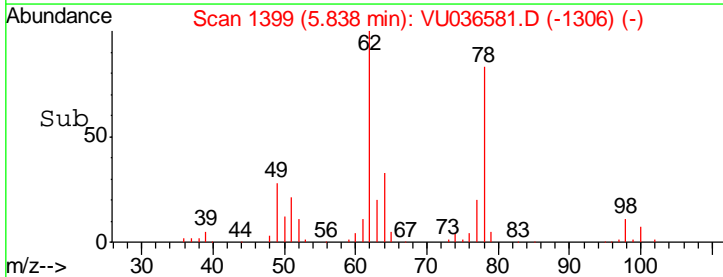
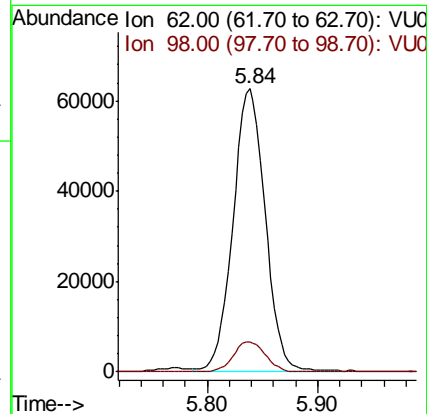
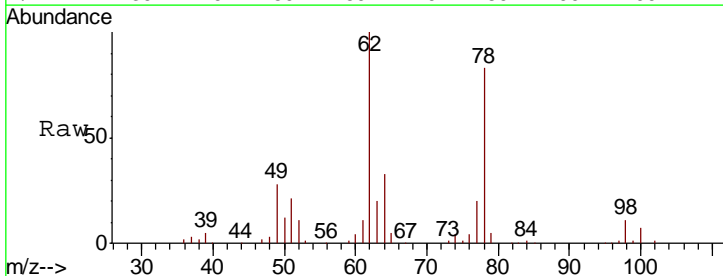
Instrument :
 MSVOA_U
 ClientSampled :

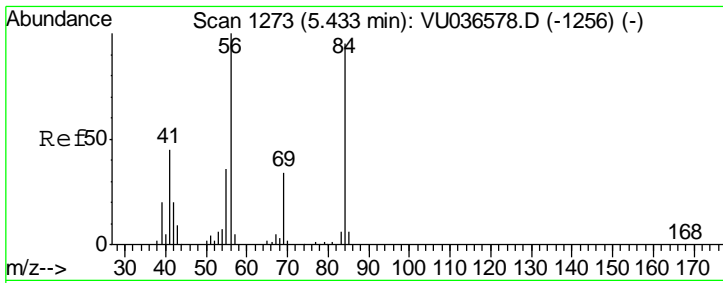
Tgt Ion	Resp	Lower	Upper
83	170834		
85	64.7	46.3	85.9



#27
 1,2-Dichloroethane
 Concen: 49.954 ug/L
 RT: 5.84 min Scan# 1399
 Delta R.T. 0.00 min
 Lab File: VU036581.D
 Acq: 28 Jan 2020 19:10

Tgt Ion	Resp	Lower	Upper
62	126313		
98	10.6	8.4	12.6

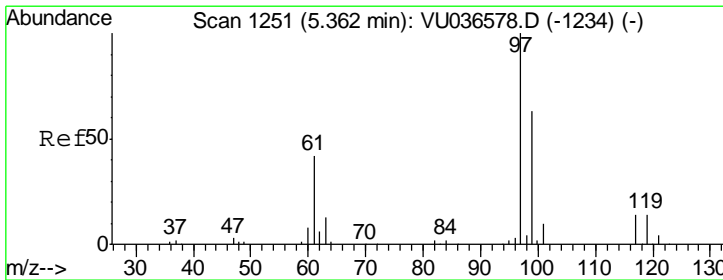
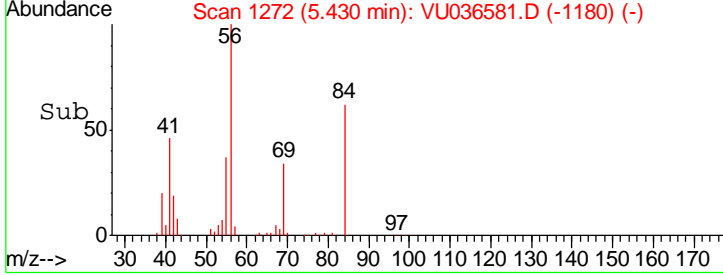
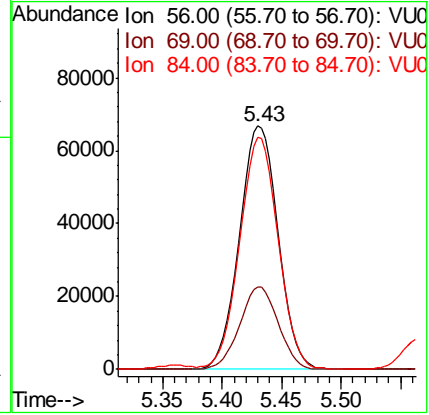
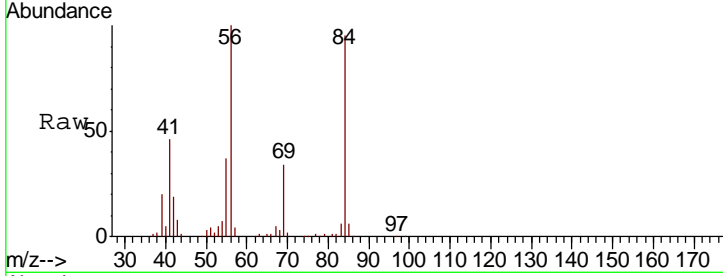




#29
 Cyclohexane
 Concen: 50.861 ug/L
 RT: 5.43 min Scan# 1272
 Delta R.T. -0.00 min
 Lab File: VU036581.D
 Acq: 28 Jan 2020 19:10

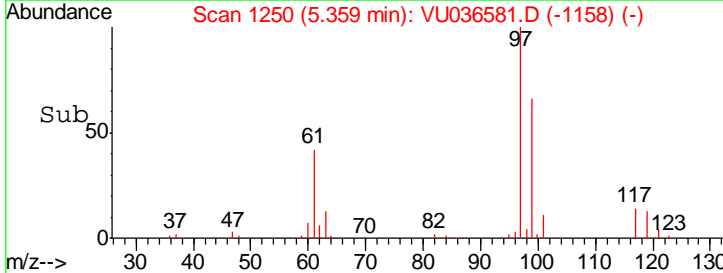
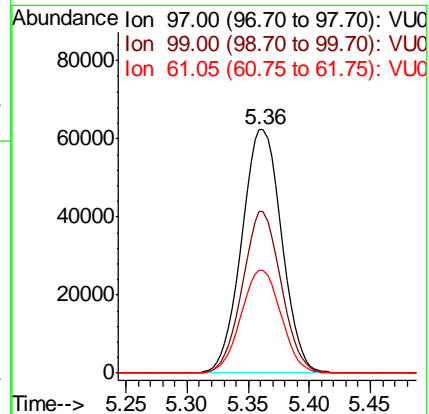
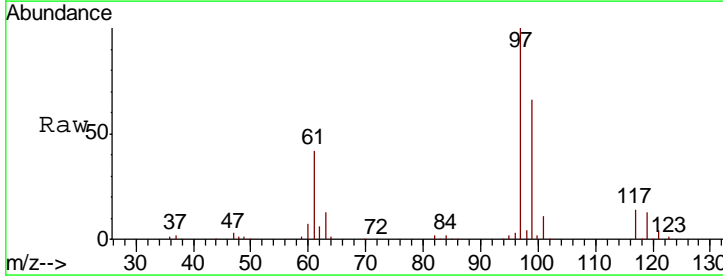
Instrument :
 MSVOA_U
 ClientSampled :

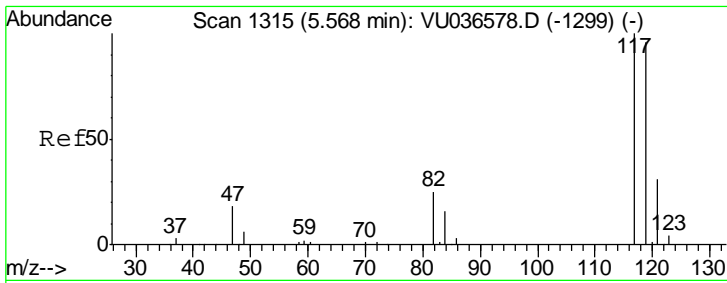
Tgt Ion	Resp	Lower	Upper
56	100		
69	33.7	26.4	39.6
84	94.7	76.6	114.8



#30
 1,1,1-Trichloroethane
 Concen: 52.037 ug/L
 RT: 5.36 min Scan# 1250
 Delta R.T. -0.00 min
 Lab File: VU036581.D
 Acq: 28 Jan 2020 19:10

Tgt Ion	Resp	Lower	Upper
97	100		
99	64.3	51.0	76.4
61	42.5	34.1	51.1

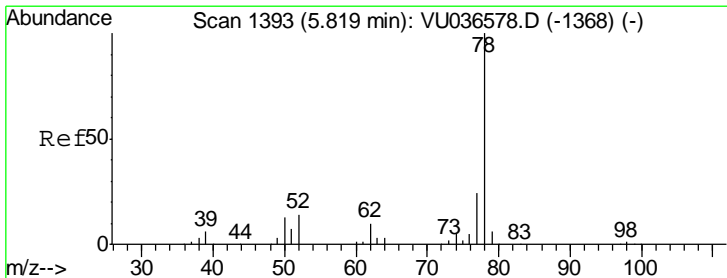
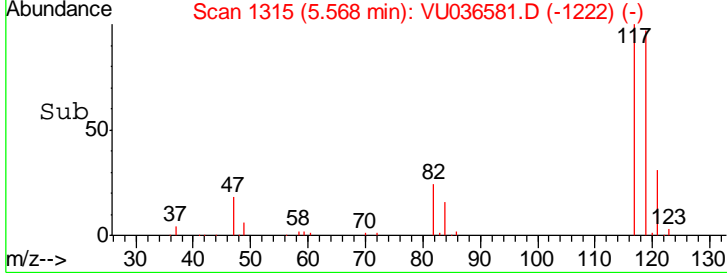
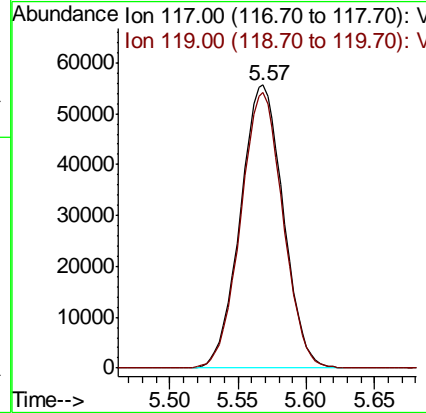
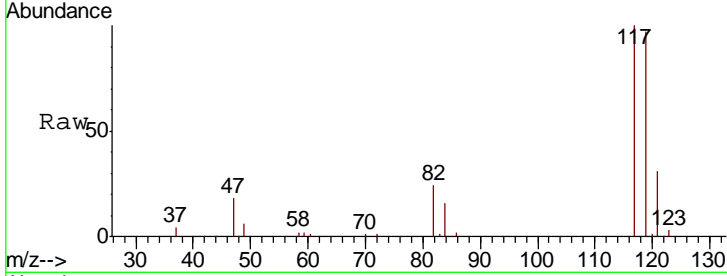




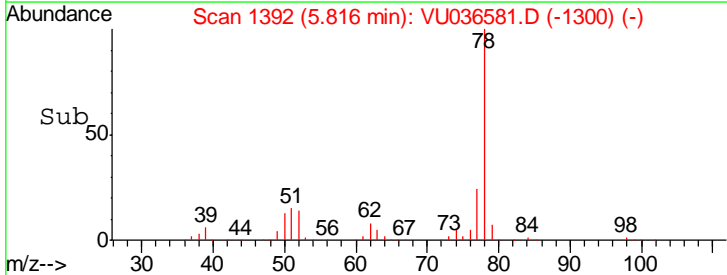
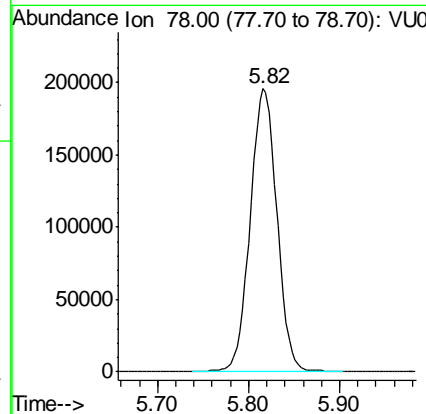
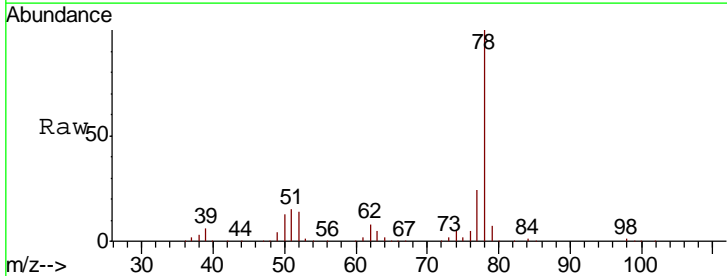
#31
 Carbon tetrachloride
 Concen: 51.999 ug/L
 RT: 5.57 min Scan# 1315
 Delta R.T. 0.00 min
 Lab File: VU036581.D
 Acq: 28 Jan 2020 19:10

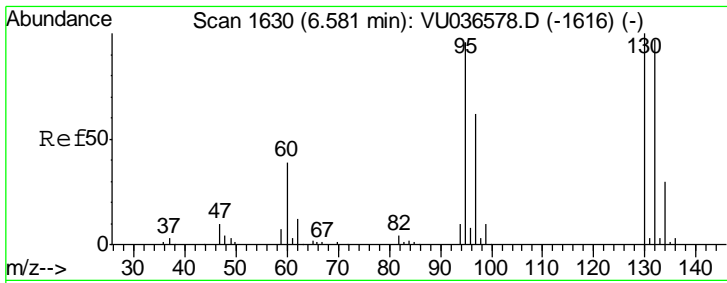
Instrument : MSVOA_U
 ClientSampled :

Tgt Ion: 117 Resp: 121424
 Ion Ratio Lower Upper
 117 100
 119 96.0 76.2 114.2



#33
 Benzene
 Concen: 51.715 ug/L
 RT: 5.82 min Scan# 1392
 Delta R.T. -0.00 min
 Lab File: VU036581.D
 Acq: 28 Jan 2020 19:10
 Tgt Ion: 78 Resp: 400312

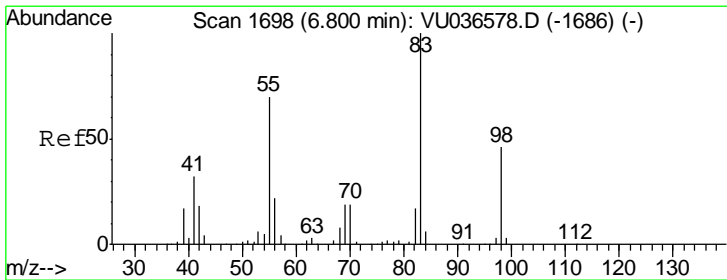
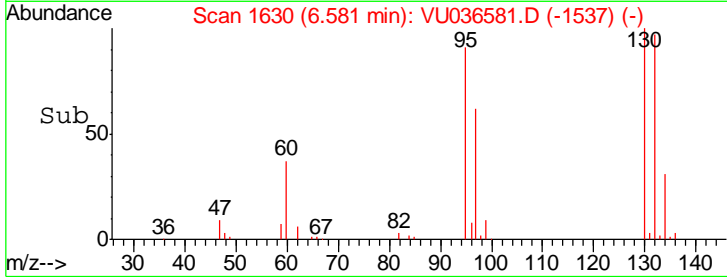
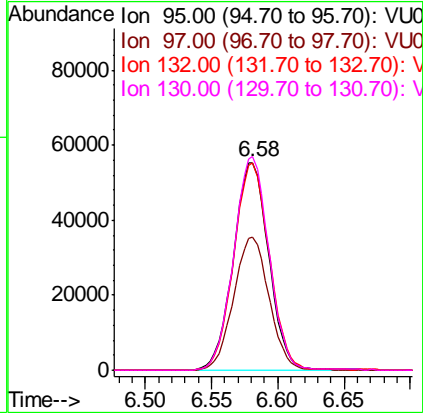
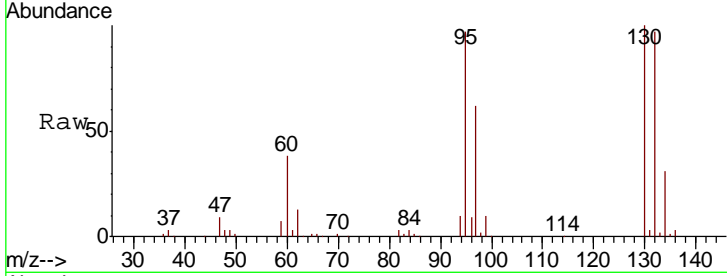




#34
 Trichloroethene
 Concen: 51.509 ug/L
 RT: 6.58 min Scan# 1630
 Delta R.T. 0.00 min
 Lab File: VU036581.D
 Acq: 28 Jan 2020 19:10

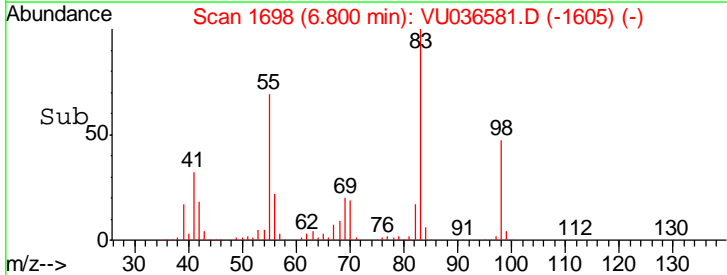
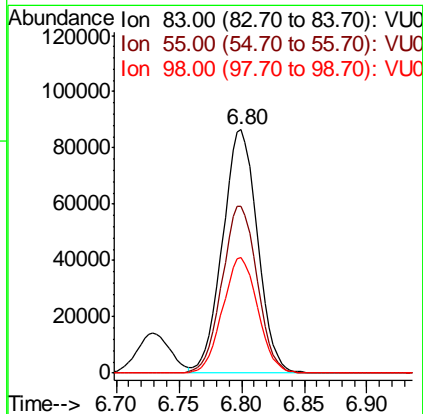
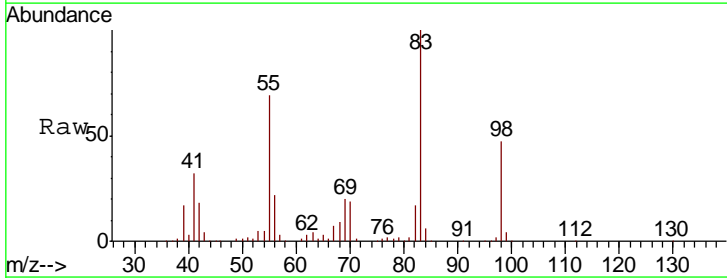
Instrument :
 MSVOA_U
 ClientSampled :

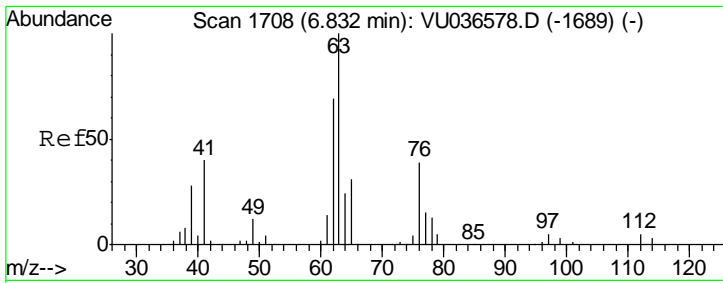
Tgt Ion	Resp	Lower	Upper
95	102628		
97	64.1	45.5	84.5
132	99.6	70.9	131.7
130	102.7	72.9	135.3



#35
 Methylcyclohexane
 Concen: 50.408 ug/L
 RT: 6.80 min Scan# 1698
 Delta R.T. 0.00 min
 Lab File: VU036581.D
 Acq: 28 Jan 2020 19:10

Tgt Ion	Resp	Lower	Upper
83	167509		
55	68.8	56.1	84.1
98	47.7	37.5	56.3

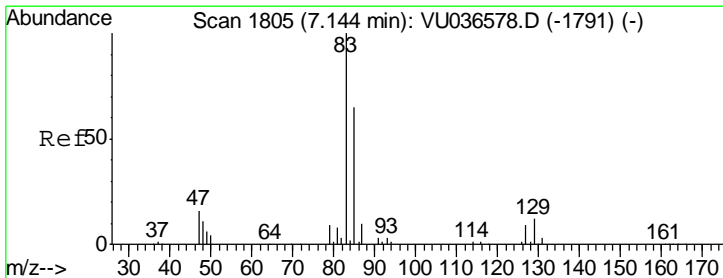
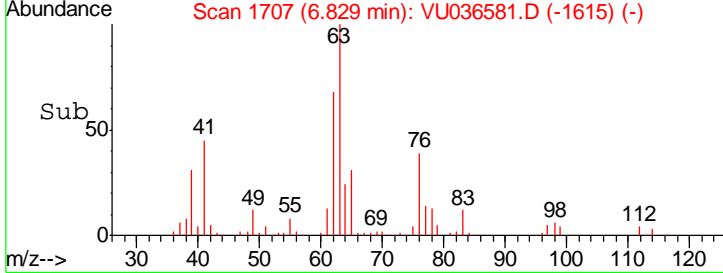
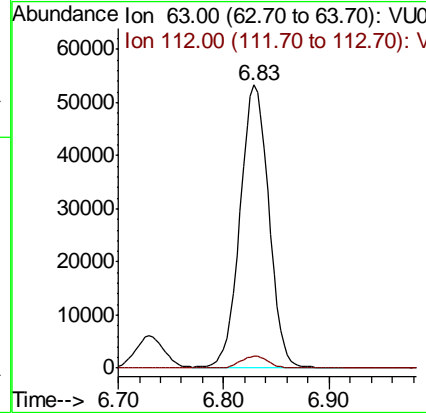
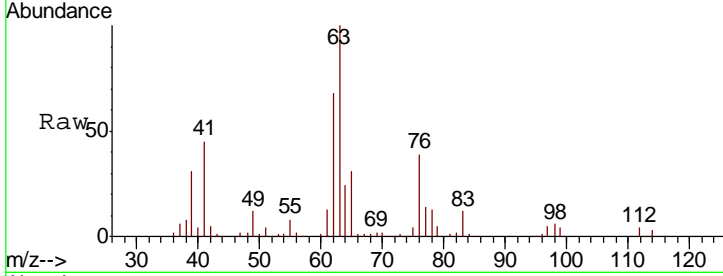




#37
 1,2-Dichloropropane
 Concen: 51.150 ug/L
 RT: 6.83 min Scan# 1707
 Delta R.T. -0.00 min
 Lab File: VU036581.D
 Acq: 28 Jan 2020 19:10

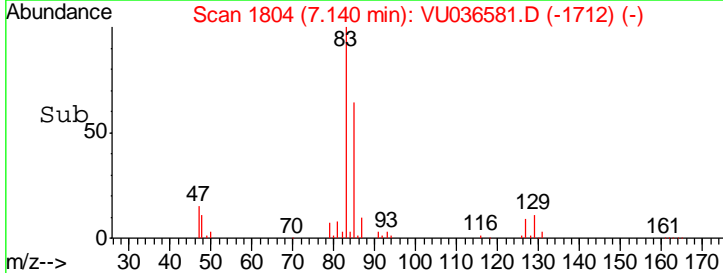
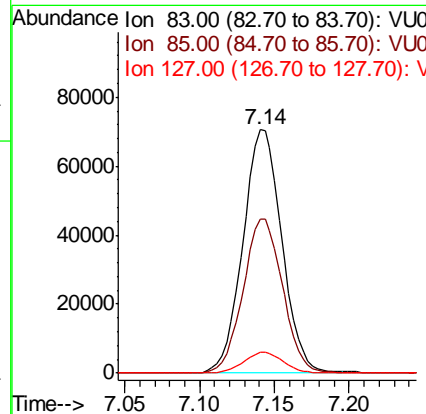
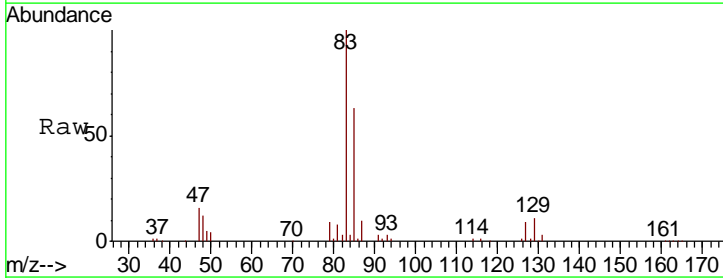
Instrument :
 MSVOA_U
 ClientSampled :

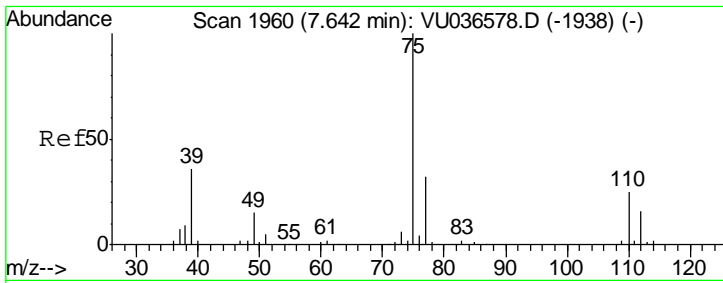
Tgt Ion	Resp	Lower	Upper
63	100630		
112	4.1	3.4	5.2



#38
 Bromodichloromethane
 Concen: 51.777 ug/L
 RT: 7.14 min Scan# 1804
 Delta R.T. -0.00 min
 Lab File: VU036581.D
 Acq: 28 Jan 2020 19:10

Tgt Ion	Resp	Lower	Upper
83	127986		
85	63.3	45.4	84.4
127	8.5	7.2	10.8

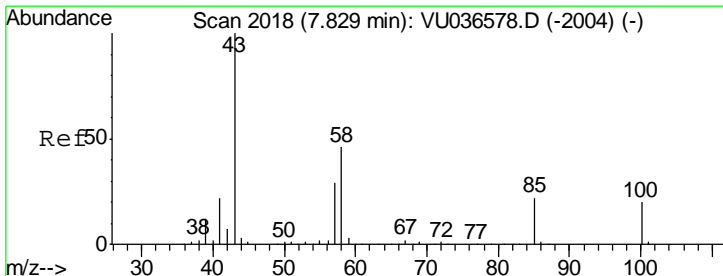
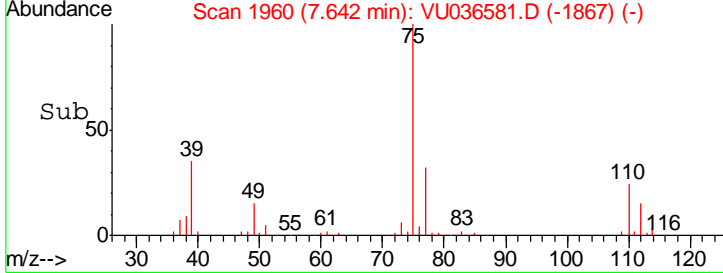
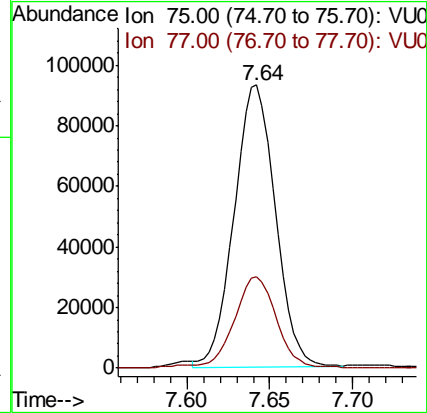
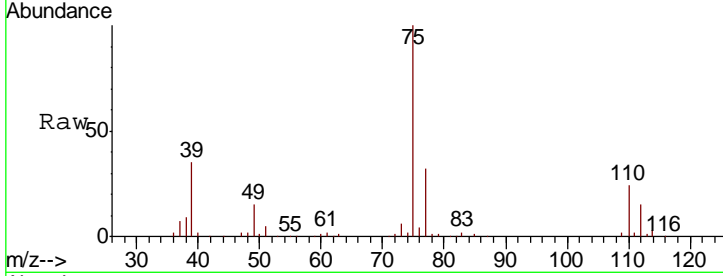




#39
 cis-1,3-Dichloropropene
 Concen: 50.611 ug/L
 RT: 7.64 min Scan# 1960
 Delta R.T. 0.00 min
 Lab File: VU036581.D
 Acq: 28 Jan 2020 19:10

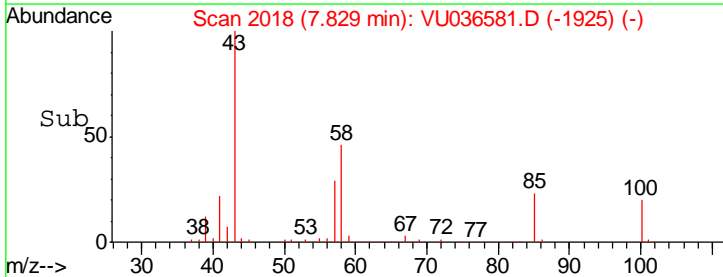
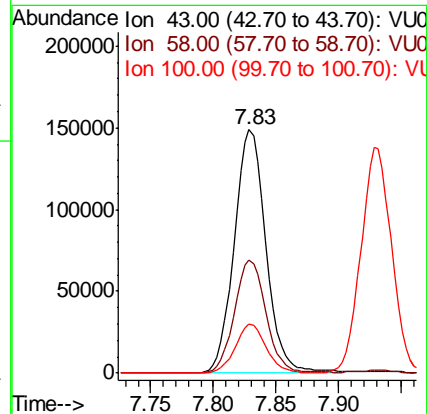
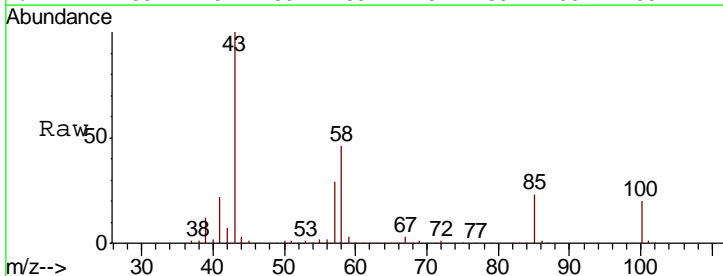
Instrument :
 MSVOA_U
 ClientSampled :

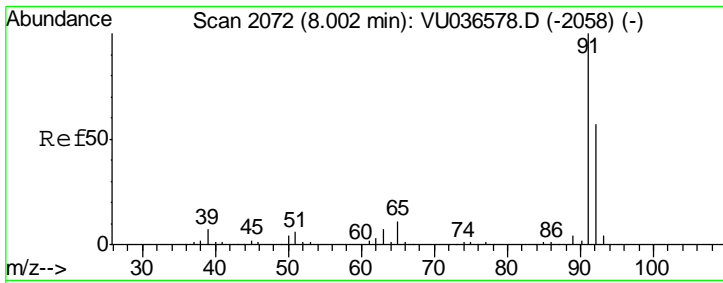
Tgt Ion	Resp	Lower	Upper
75	160422		
77	32.3	22.5	41.9



#40
 4-Methyl-2-pentanone
 Concen: 103.650 ug/L
 RT: 7.83 min Scan# 1818
 Delta R.T. 0.00 min
 Lab File: VU036581.D
 Acq: 28 Jan 2020 19:10

Tgt Ion	Resp	Lower	Upper
43	261780		
58	46.1	37.0	55.4
100	19.6	15.8	23.6

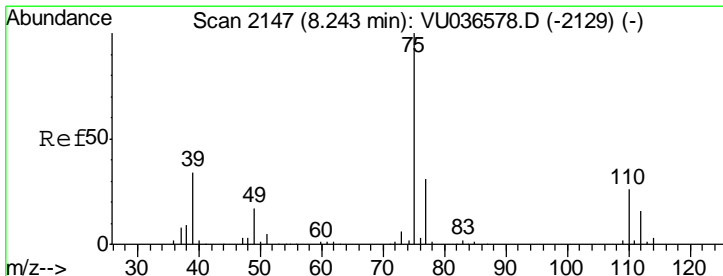
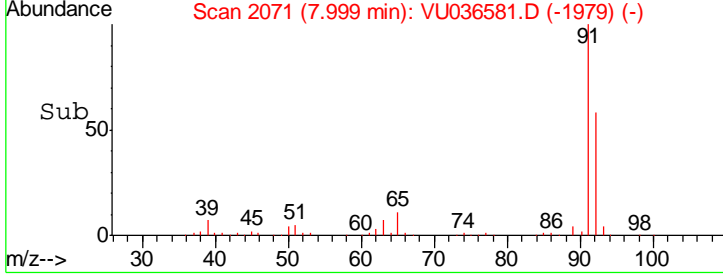
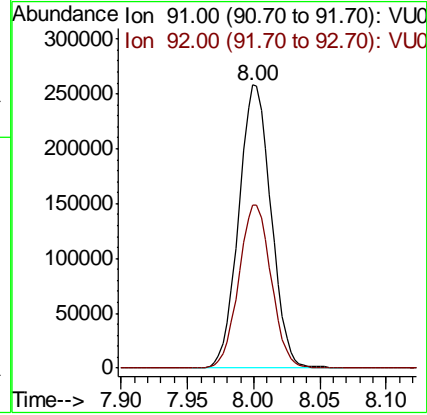
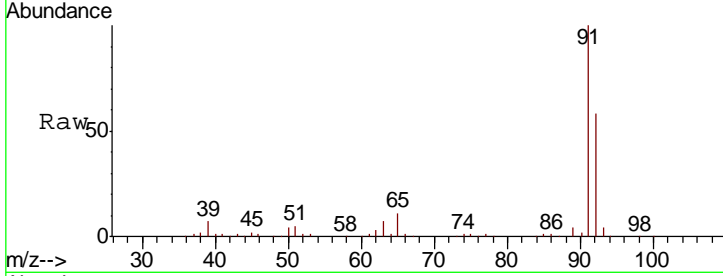




#42
 Toluene
 Concen: 52.016 ug/L
 RT: 8.00 min Scan# 2071
 Delta R.T. -0.00 min
 Lab File: VU036581.D
 Acq: 28 Jan 2020 19:10

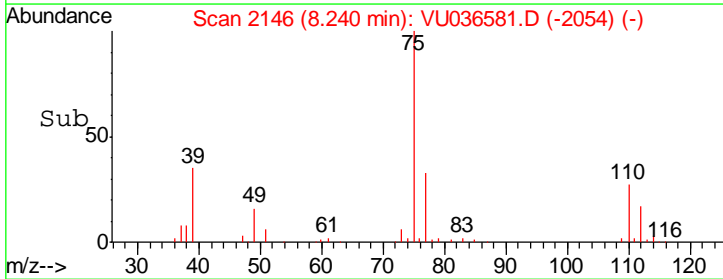
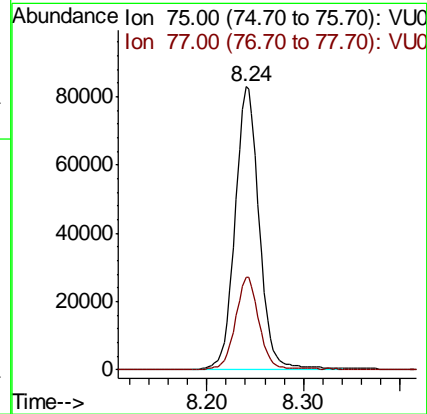
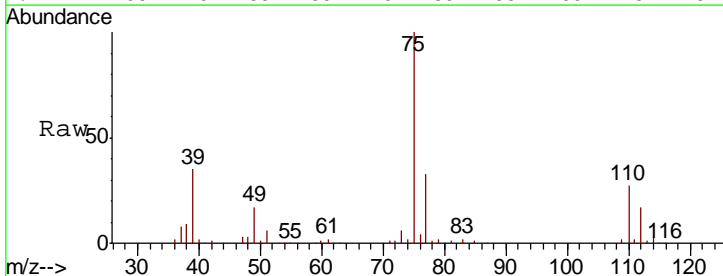
Instrument :
 MSVOA_U
 ClientSampled :

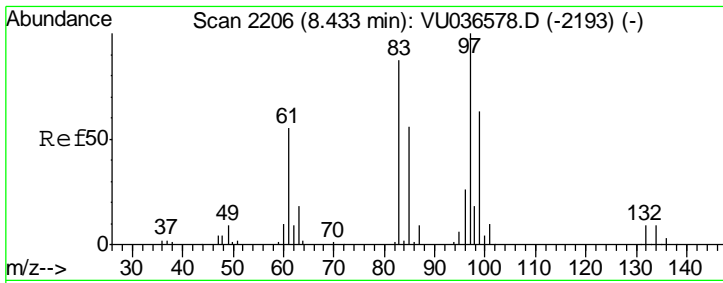
Tgt Ion: 91 Resp: 437643
 Ion Ratio Lower Upper
 91 100
 92 57.8 39.9 74.1



#44
 trans-1,3-Dichloropropene
 Concen: 51.929 ug/L
 RT: 8.24 min Scan# 2146
 Delta R.T. -0.00 min
 Lab File: VU036581.D
 Acq: 28 Jan 2020 19:10

Tgt Ion: 75 Resp: 144438
 Ion Ratio Lower Upper
 75 100
 77 32.7 21.8 40.6



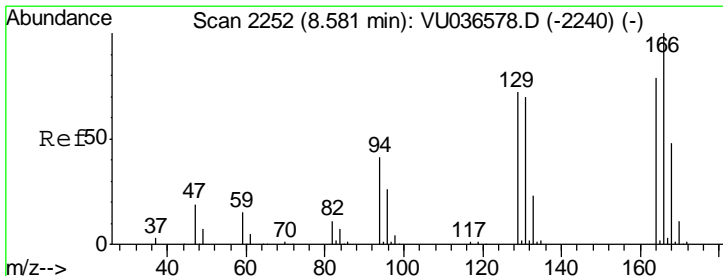
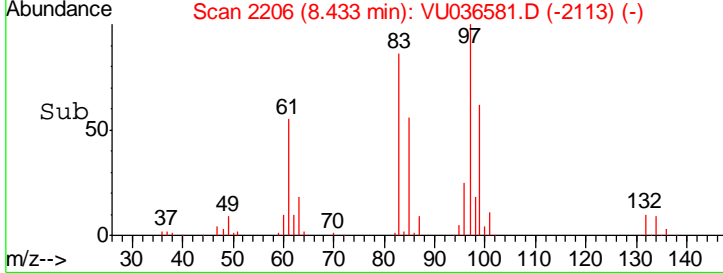
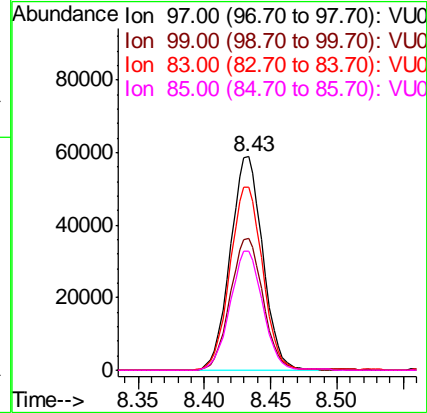
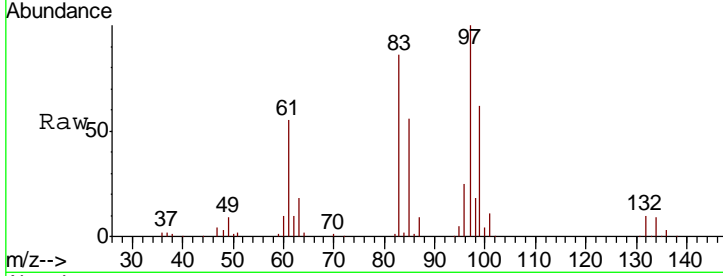


#45
 1,1,2-Trichloroethane
 Concen: 50.975 ug/L
 RT: 8.43 min Scan# 2206
 Delta R.T. 0.00 min
 Lab File: VU036581.D
 Acq: 28 Jan 2020 19:10

Instrument : MSVOA_U
 ClientSampled :

Tgt Ion: 97 Resp: 100593

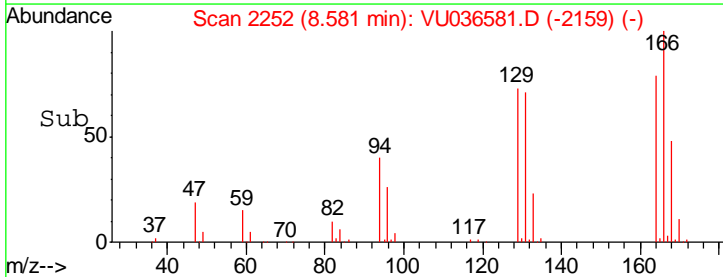
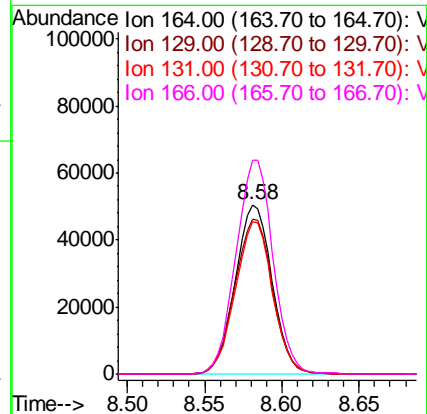
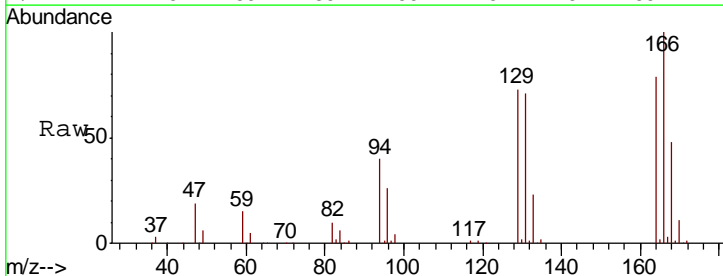
Ion	Ratio	Lower	Upper
97	100		
99	61.7	44.1	81.9
83	85.8	61.2	113.6
85	55.9	39.2	72.8

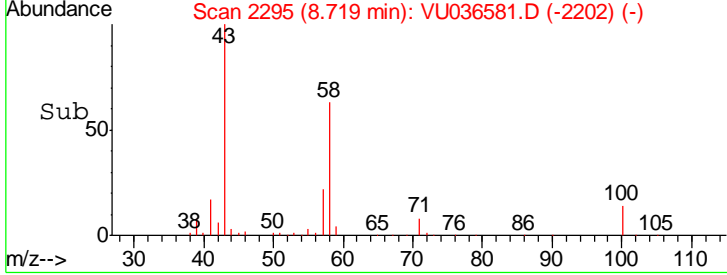
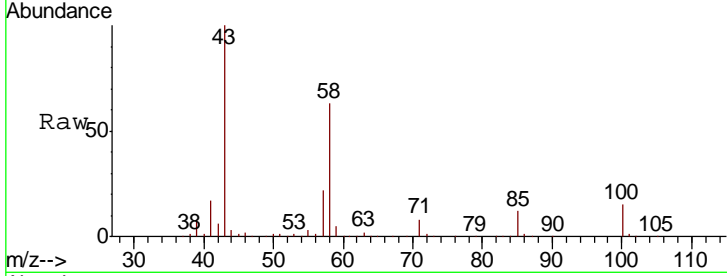
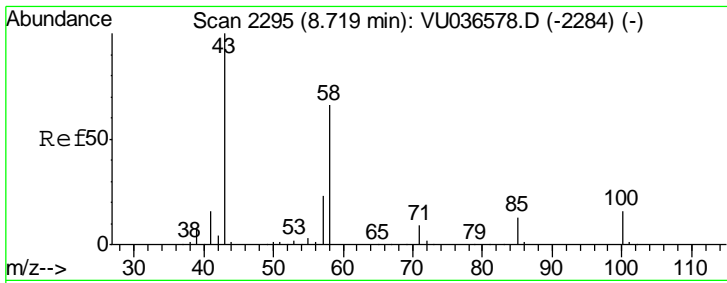


#46
 Tetrachloroethene
 Concen: 51.526 ug/L
 RT: 8.58 min Scan# 2252
 Delta R.T. 0.00 min
 Lab File: VU036581.D
 Acq: 28 Jan 2020 19:10

Tgt Ion: 164 Resp: 83399

Ion	Ratio	Lower	Upper
164	100		
129	91.9	64.2	119.2
131	90.2	61.8	114.8
166	126.4	88.8	165.0

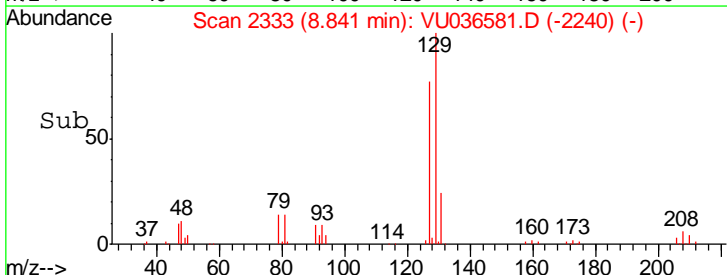
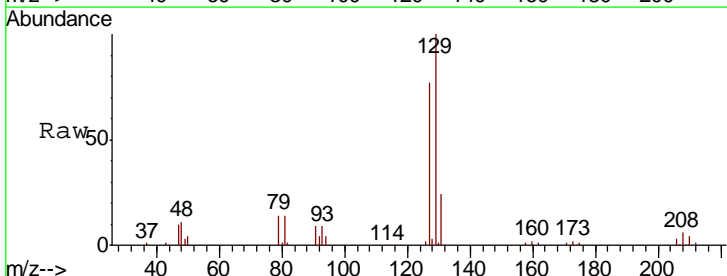
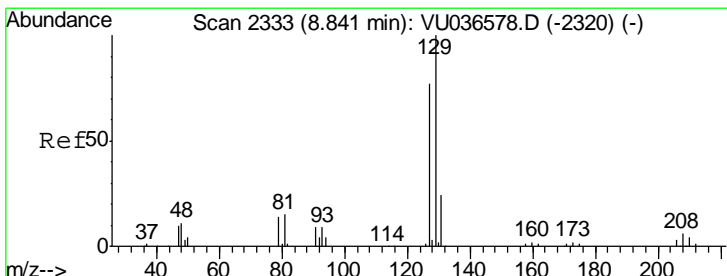
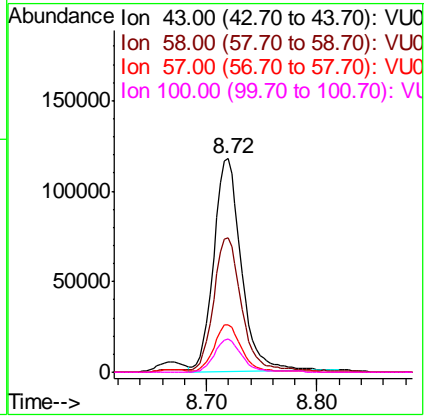




#48
 2-Hexanone
 Concen: 107.370 ug/L
 RT: 8.72 min Scan# 2295
 Delta R.T. 0.00 min
 Lab File: VU036581.D
 Acq: 28 Jan 2020 19:10

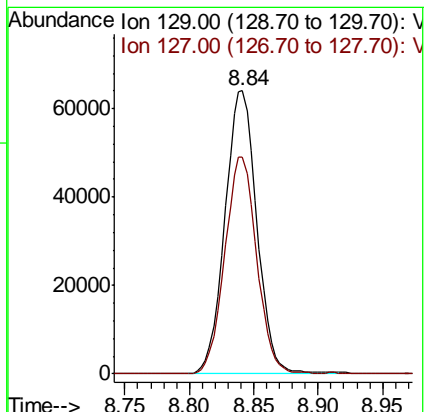
Instrument :
 MSVOA_U
 ClientSampled :

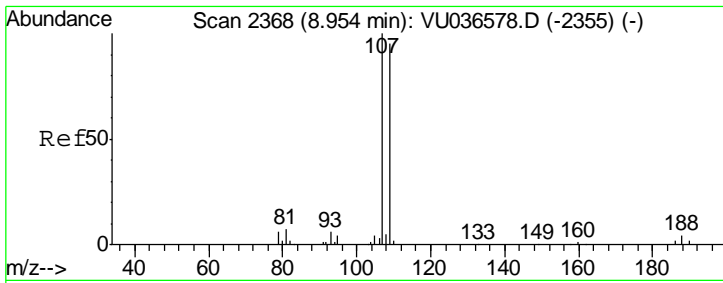
Tgt Ion	Resp	Lower	Upper
43	100		
58	62.8	49.4	74.0
57	22.0	17.1	25.7
100	15.7	11.9	17.9



#49
 Dibromochloromethane
 Concen: 52.595 ug/L
 RT: 8.84 min Scan# 2333
 Delta R.T. 0.00 min
 Lab File: VU036581.D
 Acq: 28 Jan 2020 19:10

Tgt Ion	Resp	Lower	Upper
129	100		
127	76.7	54.0	100.2

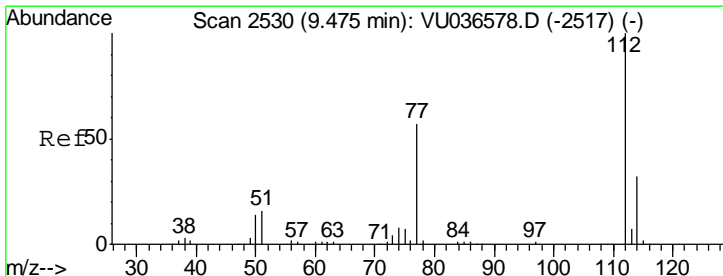
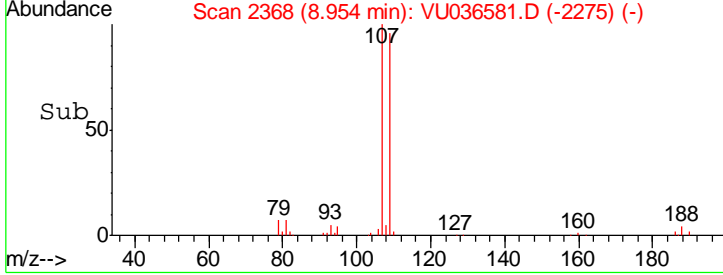
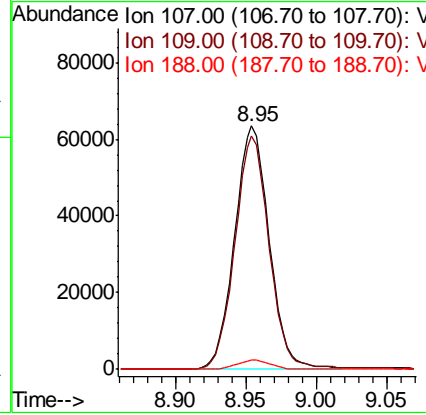
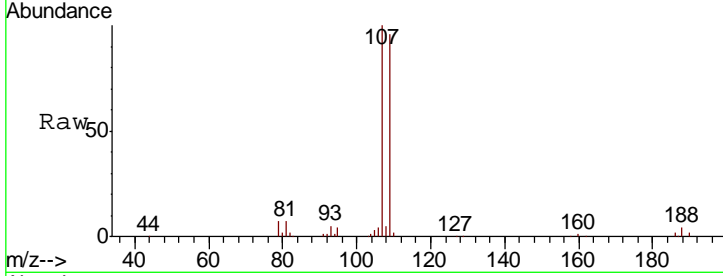




#50
 1,2-Dibromoethane
 Concen: 51.250 ug/L
 RT: 8.95 min Scan# 2368
 Delta R.T. 0.00 min
 Lab File: VU036581.D
 Acq: 28 Jan 2020 19:10

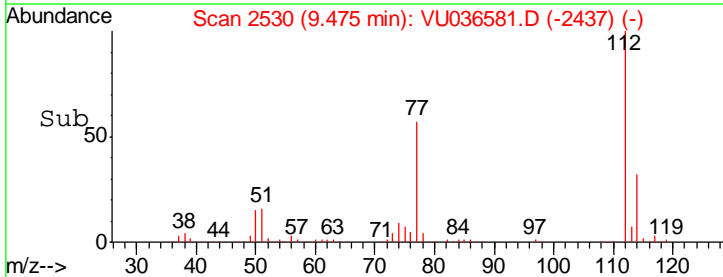
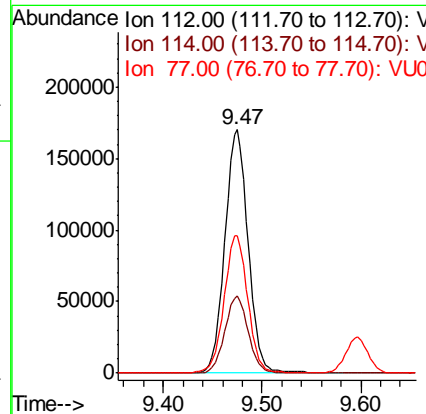
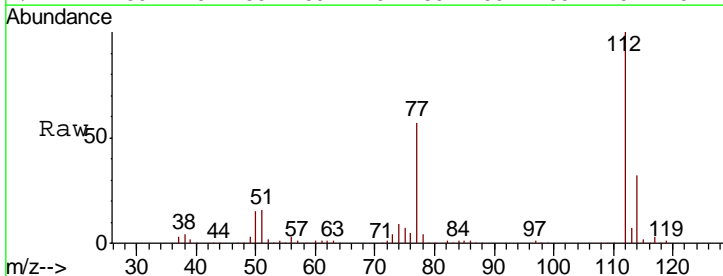
Instrument :
 MSVOA_U
 ClientSampled :

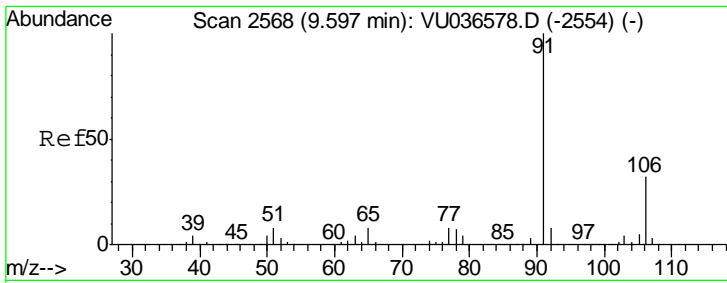
Tgt Ion	Resp	Lower	Upper
107	109018		
109	96.1	66.3	123.1
188	3.7	3.1	4.7



#51
 Chlorobenzene
 Concen: 51.368 ug/L
 RT: 9.47 min Scan# 2530
 Delta R.T. 0.00 min
 Lab File: VU036581.D
 Acq: 28 Jan 2020 19:10

Tgt Ion	Resp	Lower	Upper
112	282035		
114	31.5	22.3	41.5
77	56.5	45.7	68.5

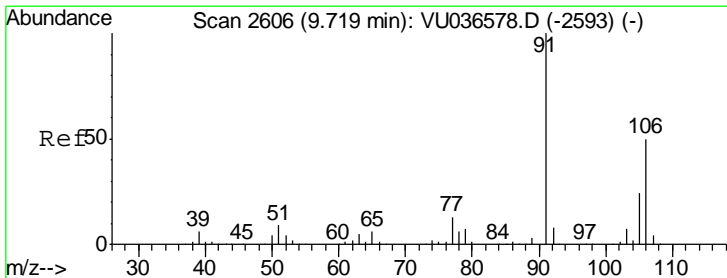
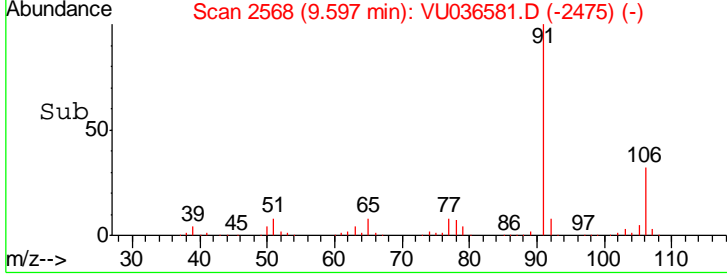
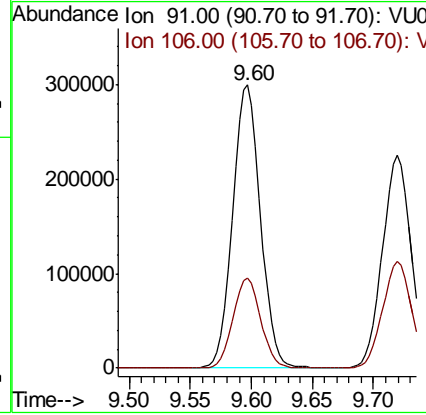
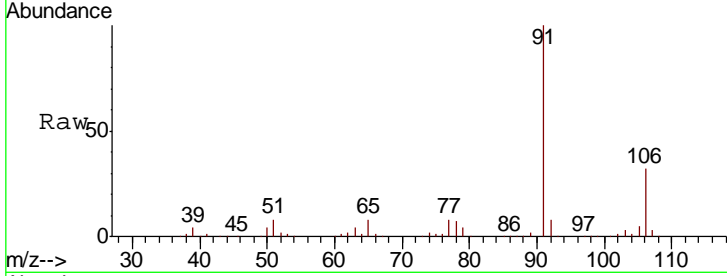




#52
 Ethylbenzene
 Concen: 51.789 ug/L
 RT: 9.60 min Scan# 2568
 Delta R.T. 0.00 min
 Lab File: VU036581.D
 Acq: 28 Jan 2020 19:10

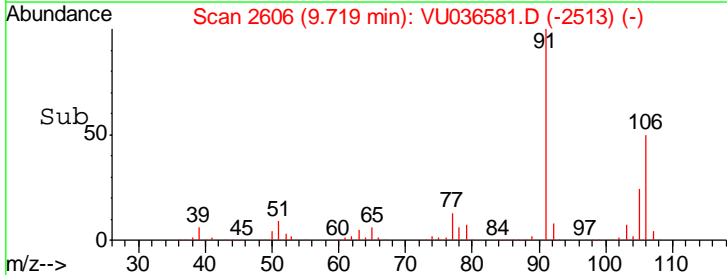
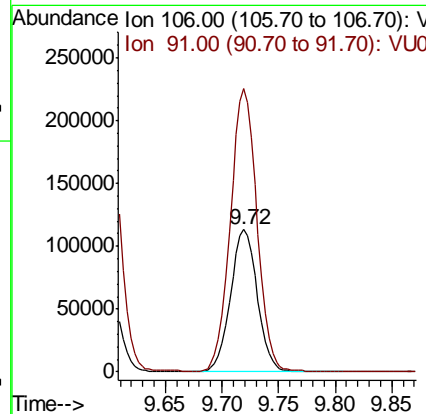
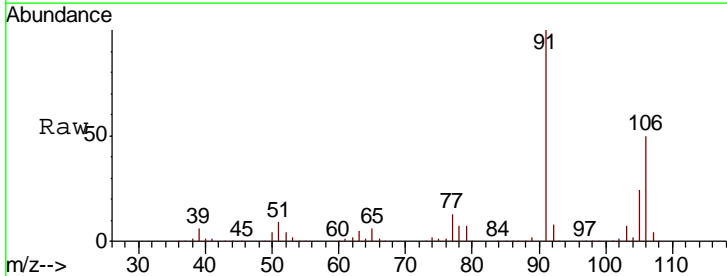
Instrument :
 MSVOA_U
 ClientSampled :

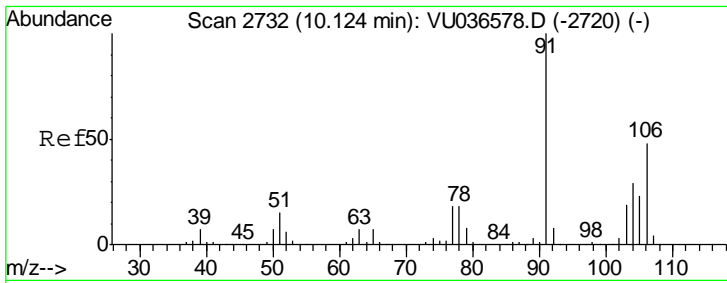
Tgt Ion	Resp	Lower	Upper
91	477325		
106	31.8	22.6	42.0



#53
 m,p-Xylene
 Concen: 52.026 ug/L
 RT: 9.72 min Scan# 2606
 Delta R.T. 0.00 min
 Lab File: VU036581.D
 Acq: 28 Jan 2020 19:10

Tgt Ion	Resp	Lower	Upper
106	187025		
91	199.3	139.4	259.0

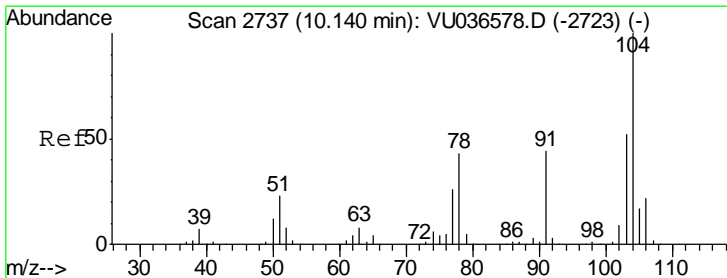
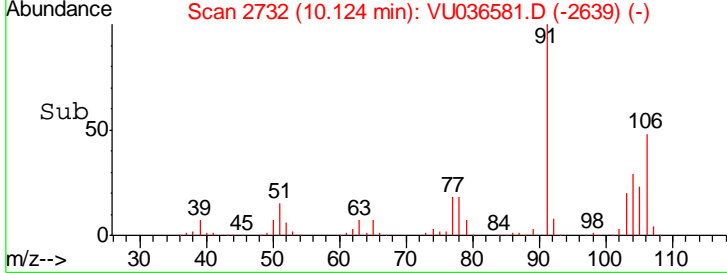
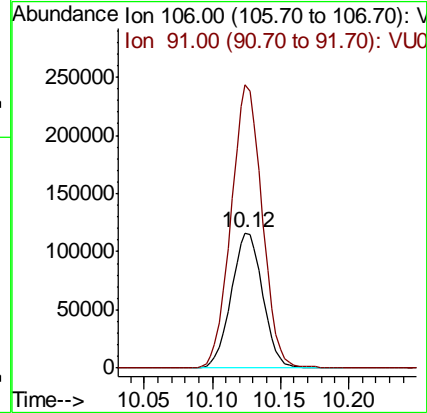
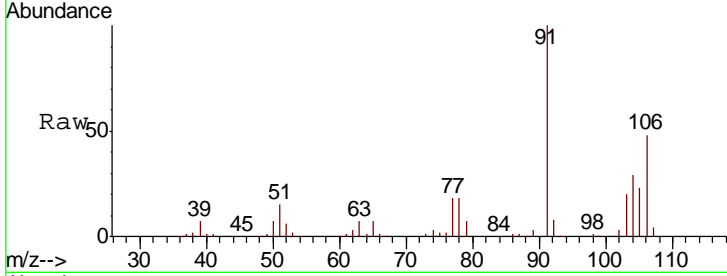




#54
 o-xylene
 Concen: 51.803 ug/L
 RT: 10.12 min Scan# 2732
 Delta R.T. 0.00 min
 Lab File: VU036581.D
 Acq: 28 Jan 2020 19:10

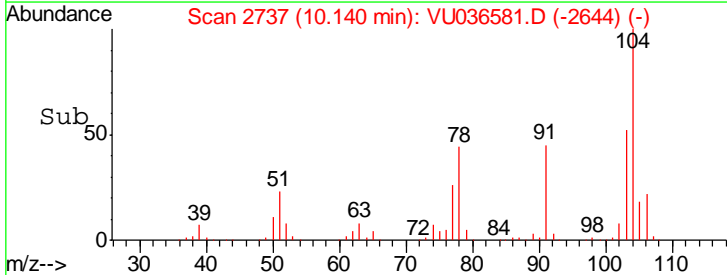
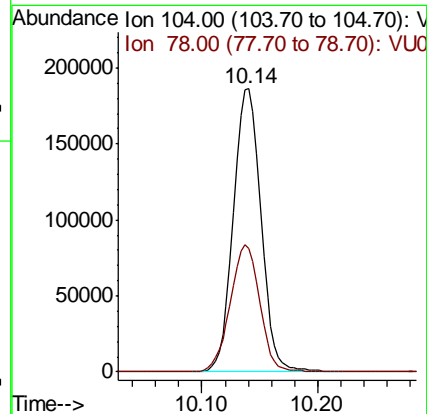
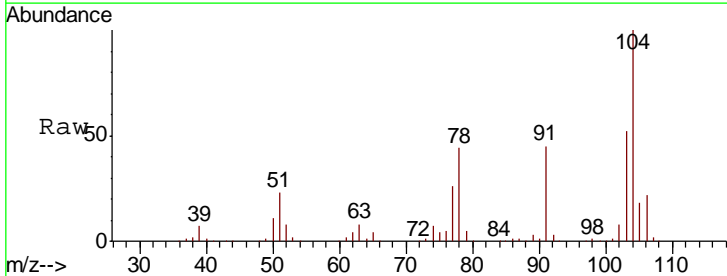
Instrument :
 MSVOA_U
 ClientSampled :

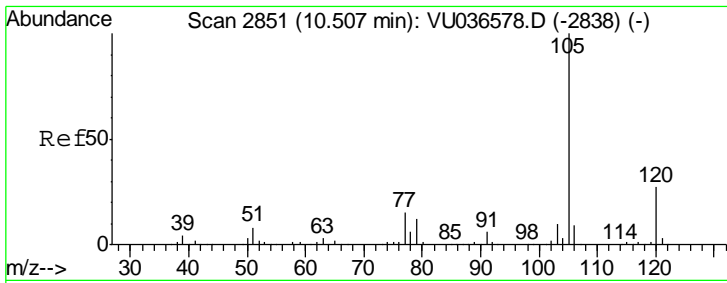
Tgt Ion:106 Resp: 185756
 Ion Ratio Lower Upper
 106 100
 91 209.5 145.9 271.1



#55
 Styrene
 Concen: 52.562 ug/L
 RT: 10.14 min Scan# 2737
 Delta R.T. 0.00 min
 Lab File: VU036581.D
 Acq: 28 Jan 2020 19:10

Tgt Ion:104 Resp: 305864
 Ion Ratio Lower Upper
 104 100
 78 43.8 30.1 55.9

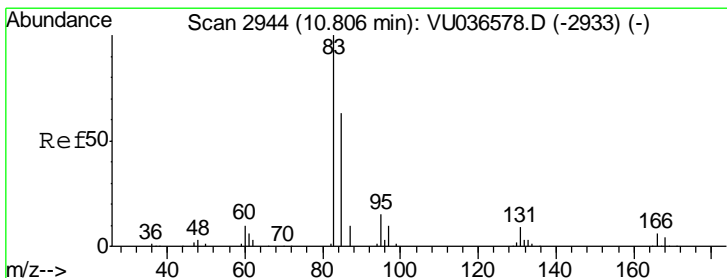
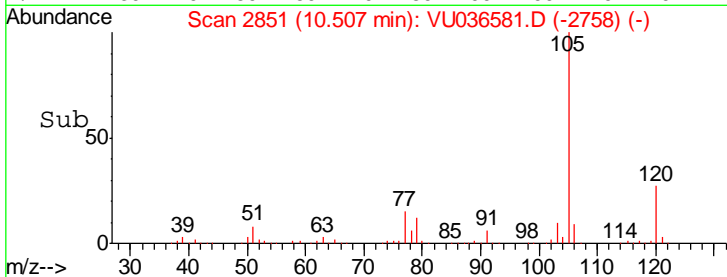
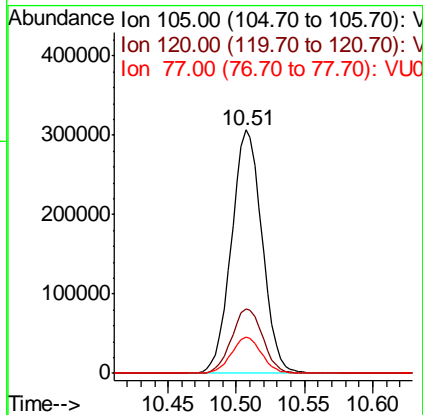
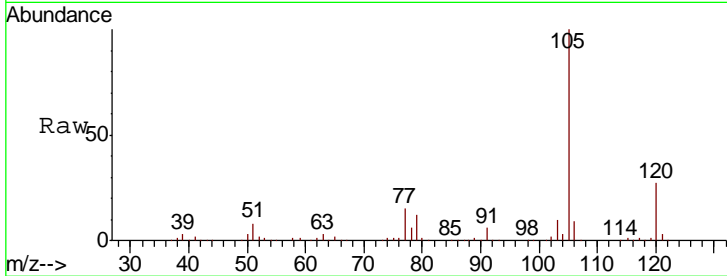




#56
 Isopropylbenzene
 Concen: 52.401 ug/L
 RT: 10.51 min Scan# 2851
 Delta R.T. 0.00 min
 Lab File: VU036581.D
 Acq: 28 Jan 2020 19:10

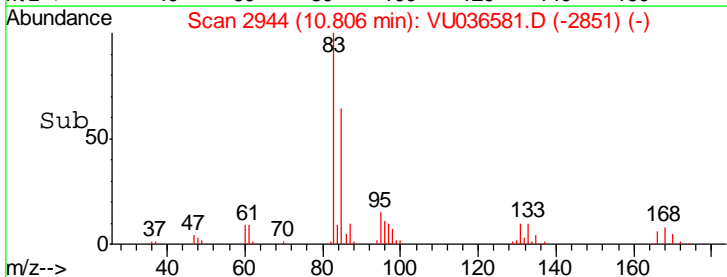
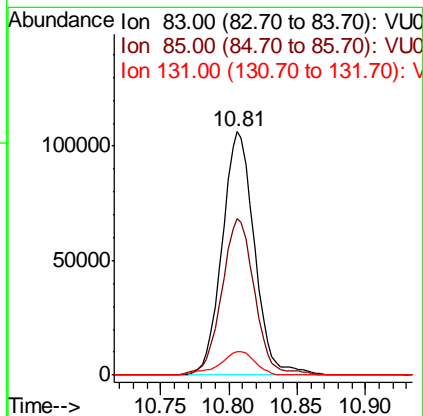
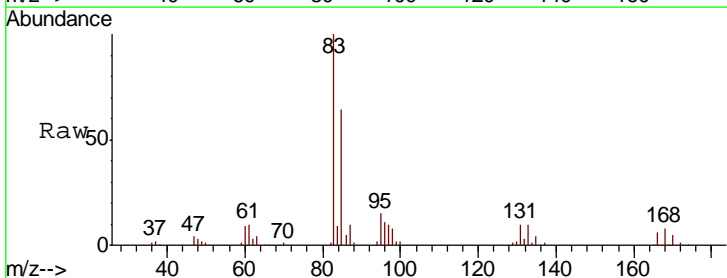
Instrument :
 MSVOA_U
 ClientSampled :

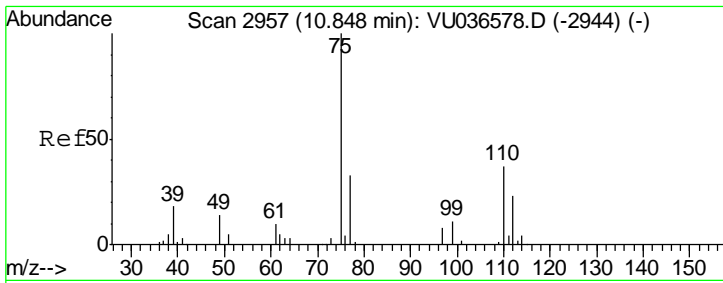
Tgt Ion	Resp	Lower	Upper
105	477727		
120	27.0	21.6	32.4
77	14.6	11.8	17.8



#58
 1,1,2,2-Tetrachloroethane
 Concen: 51.337 ug/L
 RT: 10.81 min Scan# 2944
 Delta R.T. 0.00 min
 Lab File: VU036581.D
 Acq: 28 Jan 2020 19:10

Tgt Ion	Resp	Lower	Upper
83	174657		
85	64.4	44.5	82.7
131	9.8	7.8	11.8

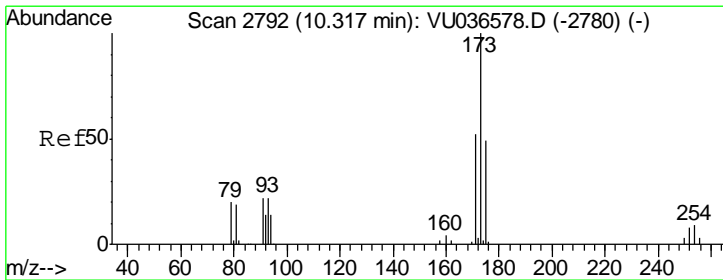
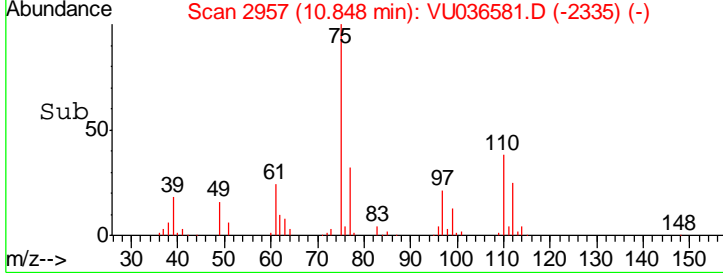
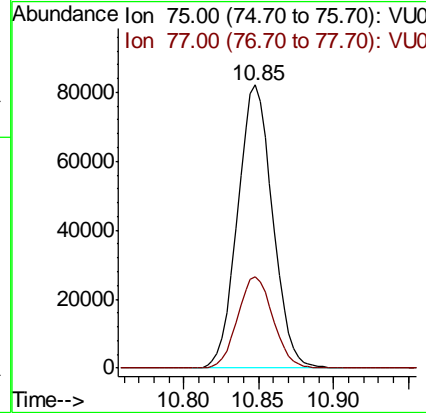
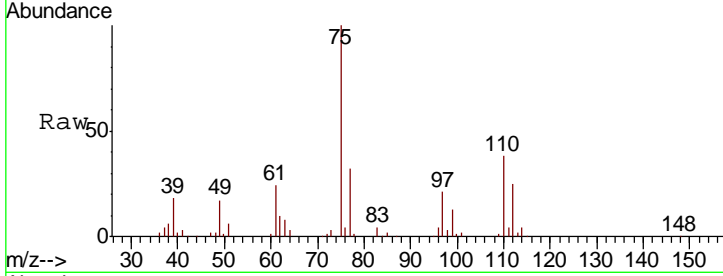




#59
 1,2,3-Trichloropropane
 Concen: 50.311 ug/L
 RT: 10.85 min Scan# 2957
 Delta R.T. 0.00 min
 Lab File: VU036581.D
 Acq: 28 Jan 2020 19:10

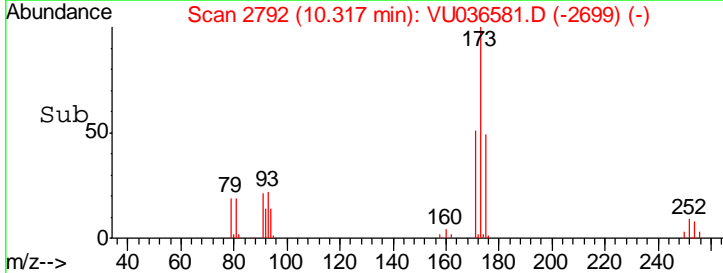
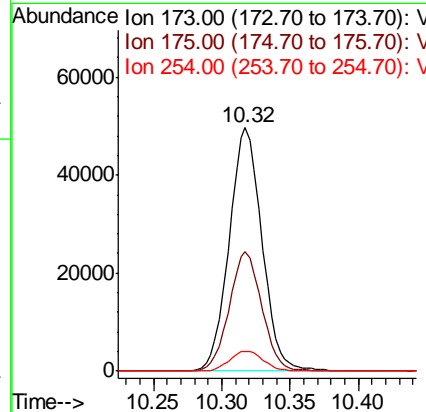
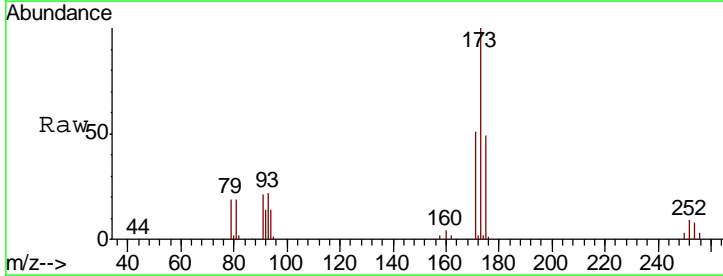
Instrument :
 MSVOA_U
 ClientSampled :

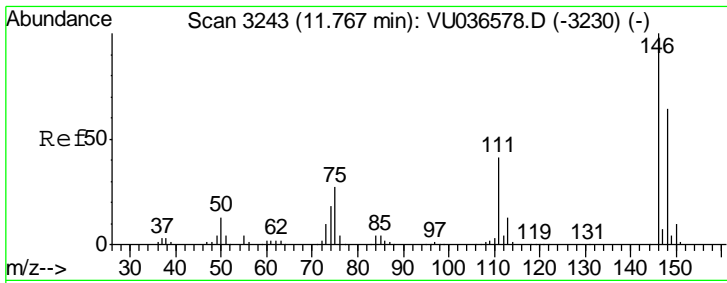
Tgt Ion	Resp	Lower	Upper
75	133803		
77	32.7	26.2	39.2



#61
 Bromoform
 Concen: 49.268 ug/L
 RT: 10.32 min Scan# 2792
 Delta R.T. 0.00 min
 Lab File: VU036581.D
 Acq: 28 Jan 2020 19:10

Tgt Ion	Resp	Lower	Upper
173	82847		
175	48.8	39.3	58.9
254	8.4	6.6	10.0

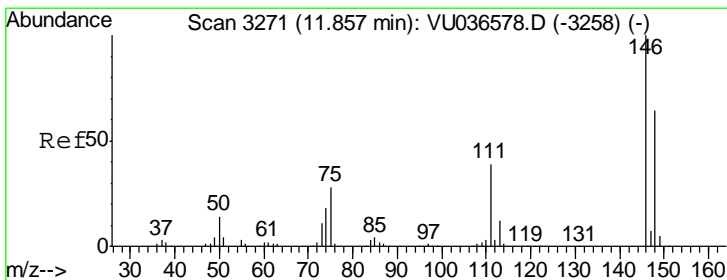
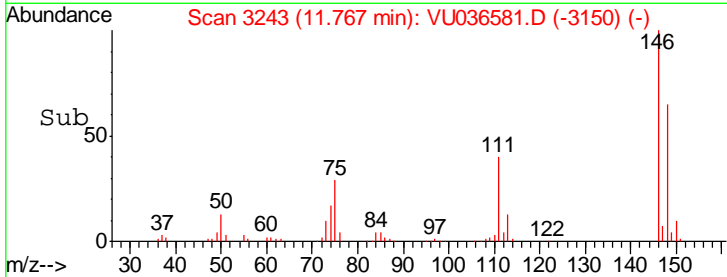
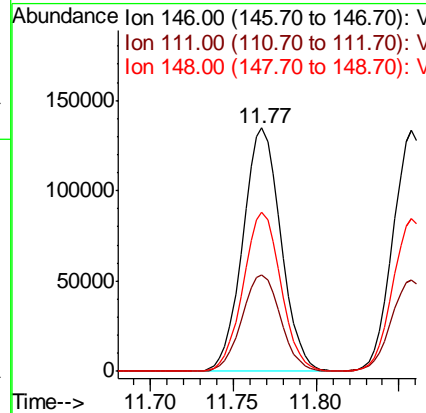
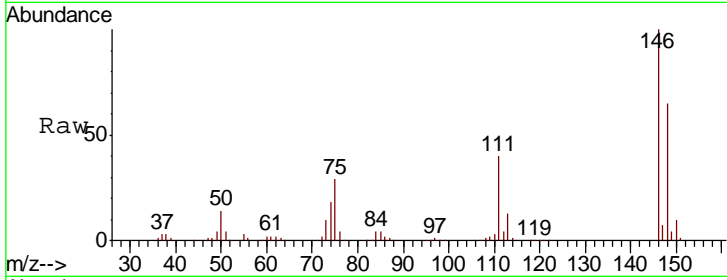




#62
 1,3-Dichlorobenzene
 Concen: 50.122 ug/L
 RT: 11.77 min Scan# 3243
 Delta R.T. 0.00 min
 Lab File: VU036581.D
 Acq: 28 Jan 2020 19:10

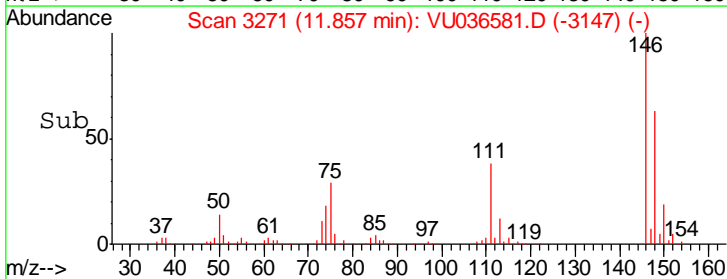
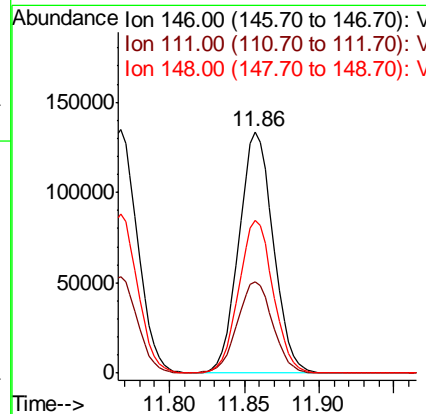
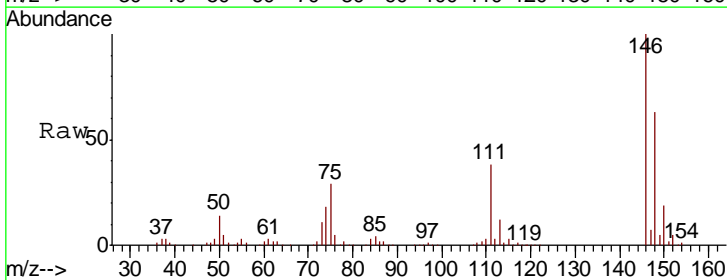
Instrument :
 MSVOA_U
 ClientSampled :

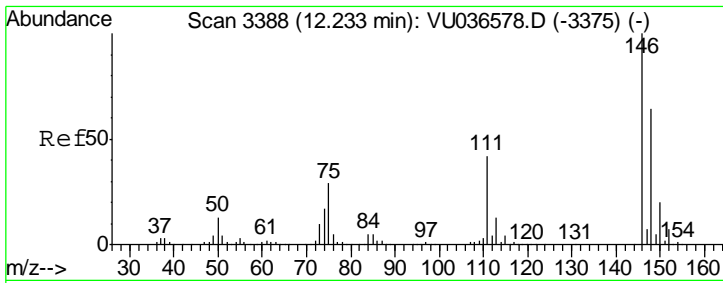
Tgt Ion	Resp	Lower	Upper
146	215044		
111	39.8	28.6	53.0
148	65.1	44.7	82.9



#63
 1,4-Dichlorobenzene
 Concen: 50.486 ug/L
 RT: 11.86 min Scan# 3271
 Delta R.T. 0.00 min
 Lab File: VU036581.D
 Acq: 28 Jan 2020 19:10

Tgt Ion	Resp	Lower	Upper
146	213249		
111	38.0	27.2	50.4
148	63.4	44.8	83.2

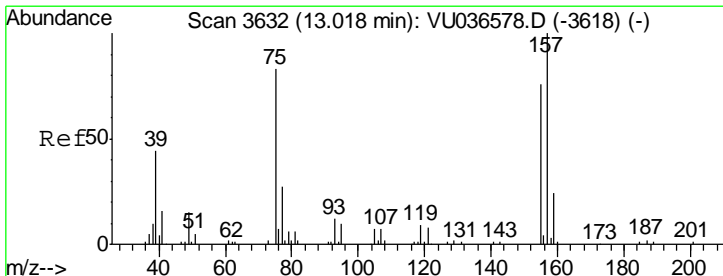
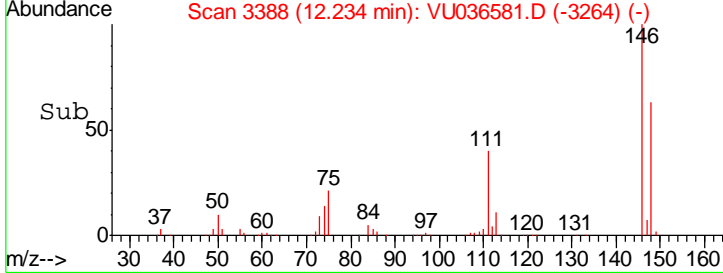
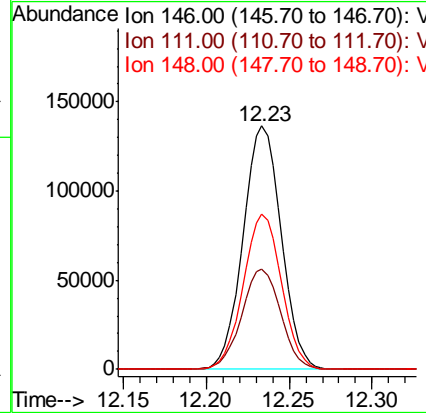
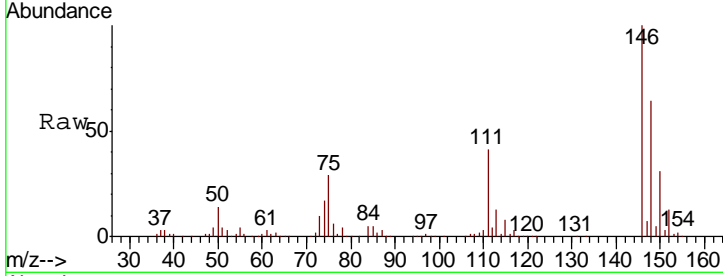




#65
 1,2-Dichlorobenzene
 Concen: 50.231 ug/L
 RT: 12.23 min Scan# 3388
 Delta R.T. 0.00 min
 Lab File: VU036581.D
 Acq: 28 Jan 2020 19:10

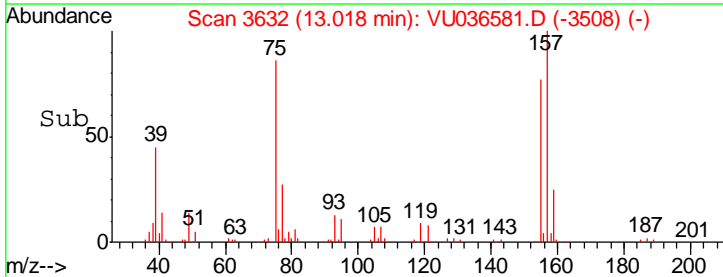
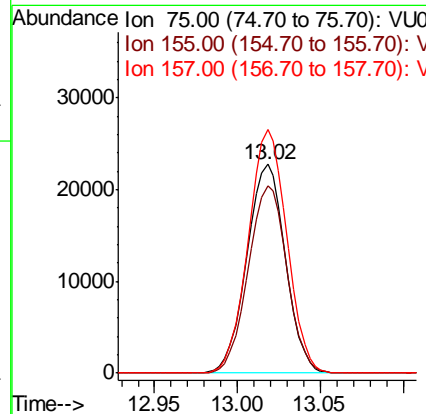
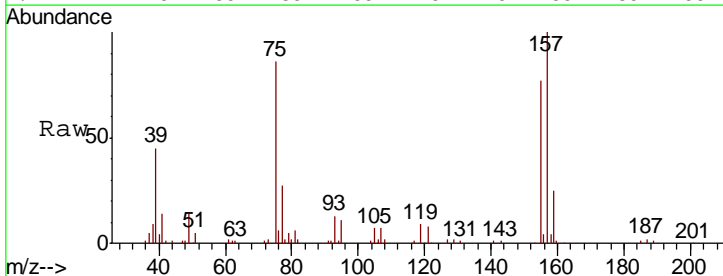
Instrument :
 MSVOA_U
 ClientSampled :

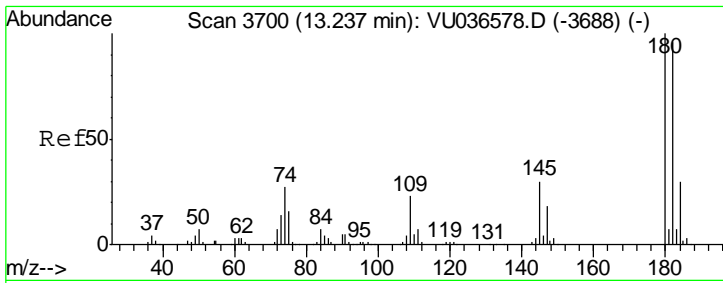
Tgt Ion	Resp	Lower	Upper
146	218435		
111	41.1	33.4	50.2
148	63.8	51.3	76.9



#66
 1,2-Dibromo-3-chloropropane
 Concen: 53.158 ug/L
 RT: 13.02 min Scan# 3632
 Delta R.T. 0.00 min
 Lab File: VU036581.D
 Acq: 28 Jan 2020 19:10

Tgt Ion	Resp	Lower	Upper
75	36908		
155	89.5	73.4	110.2
157	116.6	96.8	145.2

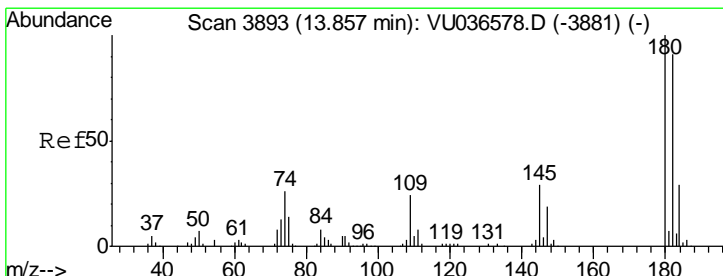
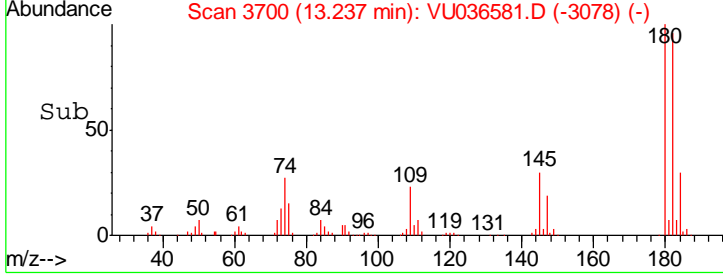
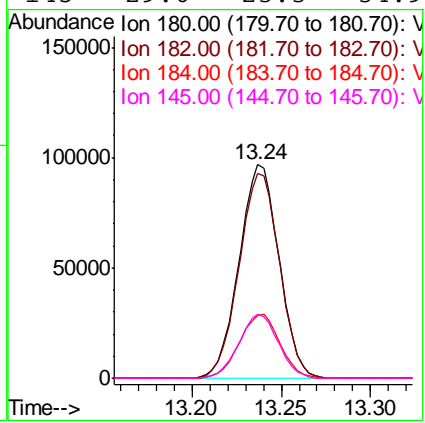
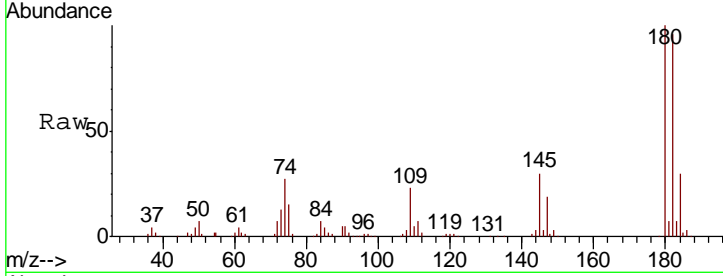




#67
 1,3,5-Trichlorobenzene
 Concen: 51.438 ug/L
 RT: 13.24 min Scan# 3700
 Delta R.T. 0.00 min
 Lab File: VU036581.D
 Acq: 28 Jan 2020 19:10

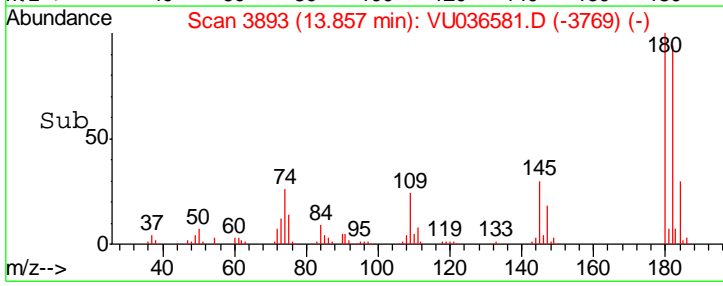
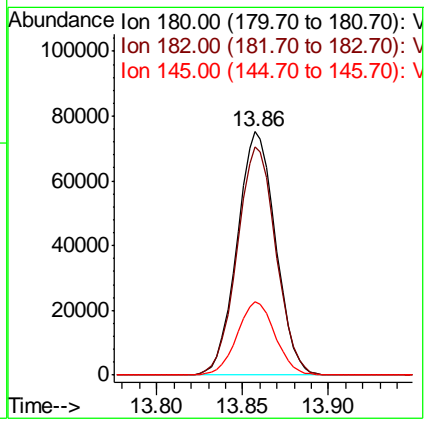
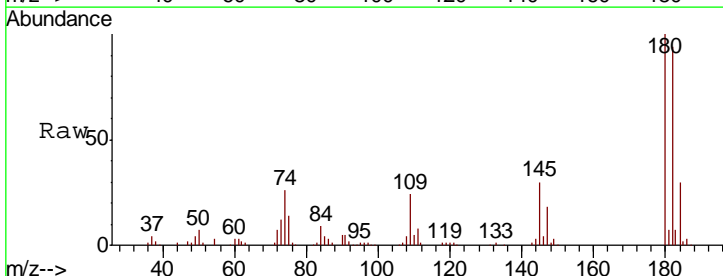
Instrument : MSVOA_U
 ClientSampled :

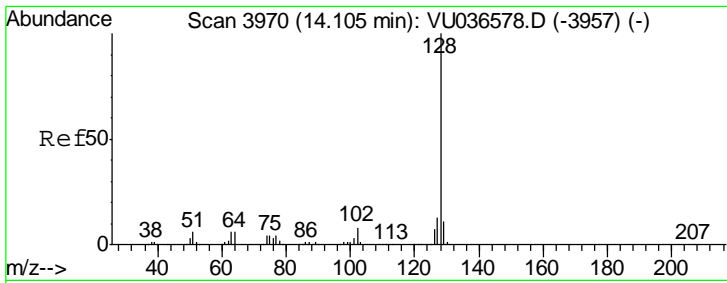
Tgt Ion	Resp	Lower	Upper
180	151570		
182	96.8	76.6	115.0
184	30.2	24.2	36.4
145	29.6	23.3	34.9



#68
 1,2,4-trichlorobenzene
 Concen: 55.664 ug/L
 RT: 13.86 min Scan# 3893
 Delta R.T. 0.00 min
 Lab File: VU036581.D
 Acq: 28 Jan 2020 19:10

Tgt Ion	Resp	Lower	Upper
180	116885		
182	94.8	74.9	112.3
145	29.8	23.8	35.8

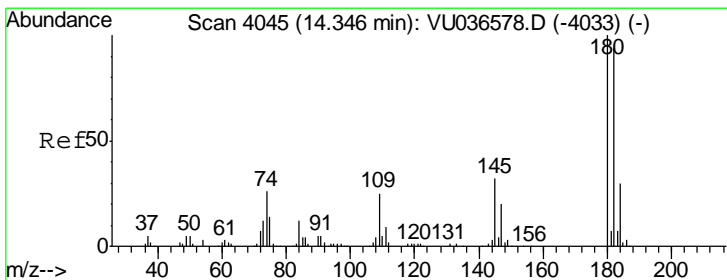
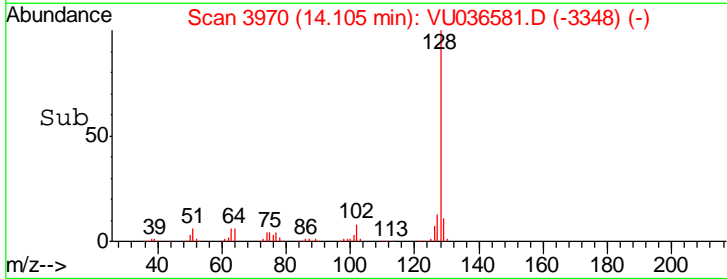
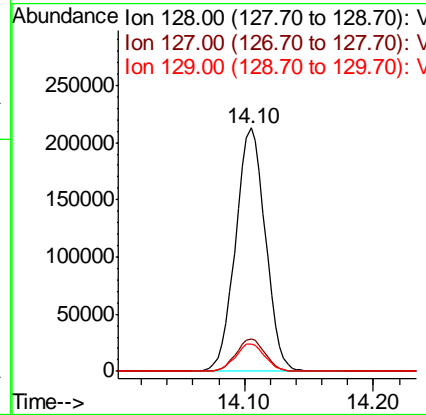
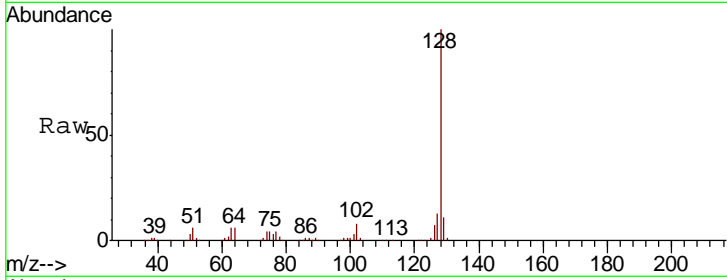




#69
 Naphthalene
 Concen: 56.216 ug/L
 RT: 14.10 min Scan# 3970
 Delta R.T. 0.00 min
 Lab File: VU036581.D
 Acq: 28 Jan 2020 19:10

Instrument : MSVOA_U
 ClientSampled :

Tgt Ion	Resp	Lower	Upper
128	341591		
127	13.0	10.6	15.8
129	11.1	8.6	12.8



#70
 1,2,3-Trichlorobenzene
 Concen: 54.958 ug/L
 RT: 14.35 min Scan# 4045
 Delta R.T. 0.00 min
 Lab File: VU036581.D
 Acq: 28 Jan 2020 19:10

Tgt Ion	Resp	Lower	Upper
180	118929		
182	95.2	76.1	114.1
145	32.0	25.4	38.2

