

Data Path : Z:\voasrv\HPCHEM1\MSVOA_U\Data\VU013023\
 Data File : VU052864.D
 Acq On : 30 Jan 2023 13:28
 Operator : JC/MD
 Sample : 01245-11
 Misc : 25.0mL/MSVOA_U/WATER
 ALS Vial : 7 Sample Multiplier: 1

Instrument :
 MSVOA_U
 ClientSampleId :
 PT-EBCP-WS

Integration Parameters: rteint.p

Integrator: RTE
 Smoothing : ON Filtering: 5
 Sampling : 1 Min Area: 3 % of largest Peak
 Start Thrs: 0.2 Max Peaks: 100
 Stop Thrs : 0 Peak Location: TOP

If leading or trailing edge < 100 prefer < Baseline drop else tangent >
 Peak separation: 5

Method : Z:\voasrv\HPCHEM1\MSVOA_U\Method\524U012323DW.M
 Title : METHOD 524.2 VOLATILES DRINKING WATER

Signal : TIC: VU052865.D\data.ms

peak #	R.T. min	first scan	max scan	last scan	PK TY	peak height	corr. area	corr. % max.	% of total
1	3.044	519	530	550	rVB3	11195	21177	30.67%	6.437%
2	3.182	560	573	584	rBV	4609	10905	15.80%	3.315%
3	3.874	782	788	793	rBV2	519	709	1.03%	0.216%
4	4.674	1016	1037	1050	rBV	13250	43816	63.47%	13.318%
5	5.086	1154	1165	1176	rBV7	2008	4394	6.36%	1.336%
6	5.365	1247	1252	1254	rBV	711	703	1.02%	0.214%
7	6.111	1470	1484	1500	rBV	36586	69038	100.00%	20.984%
8	7.899	2037	2040	2047	rVB2	894	995	1.44%	0.302%
9	7.973	2055	2063	2065	rBV3	610	841	1.22%	0.256%
10	8.925	2350	2359	2370	rVB	4251	6659	9.65%	2.024%
11	10.632	2880	2890	2901	rBV	25561	40585	58.79%	12.336%
12	10.819	2938	2948	2961	rBV3	22144	35167	50.94%	10.689%
13	10.893	2964	2971	2983	rBV5	1302	1869	2.71%	0.568%
14	11.089	3026	3032	3041	rBV4	612	699	1.01%	0.212%
15	11.803	3246	3254	3257	rBV4	883	1138	1.65%	0.346%
16	12.188	3363	3374	3389	rBV2	32588	55648	80.60%	16.914%
17	12.992	3617	3624	3634	rBV6	1681	3182	4.61%	0.967%
18	13.844	3886	3889	3896	rBV4	1209	1277	1.85%	0.388%
19	14.015	3937	3942	3950	rVB5	998	1341	1.94%	0.408%
20	14.089	3956	3965	3975	rBV3	1593	2559	3.71%	0.778%
21	14.323	4031	4038	4049	rVB6	1797	2789	4.04%	0.848%
22	14.574	4106	4116	4126	rBV	7372	10976	15.90%	3.336%
23	14.700	4148	4155	4163	rVB3	737	1096	1.59%	0.333%
24	15.764	4480	4486	4488	rBV6	1026	984	1.43%	0.299%
25	15.941	4535	4541	4546	rBV6	638	841	1.22%	0.256%
26	16.191	4608	4619	4626	rBV7	2734	4946	7.16%	1.503%
27	16.918	4841	4845	4849	rBV4	1106	1089	1.58%	0.331%
28	16.941	4849	4852	4855	rBV3	856	734	1.06%	0.223%
29	17.117	4904	4907	4910	rBV4	1118	943	1.37%	0.287%
30	17.162	4918	4921	4924	rBV4	1060	715	1.04%	0.217%
31	17.179	4924	4926	4935	rVB7	1127	1183	1.71%	0.360%

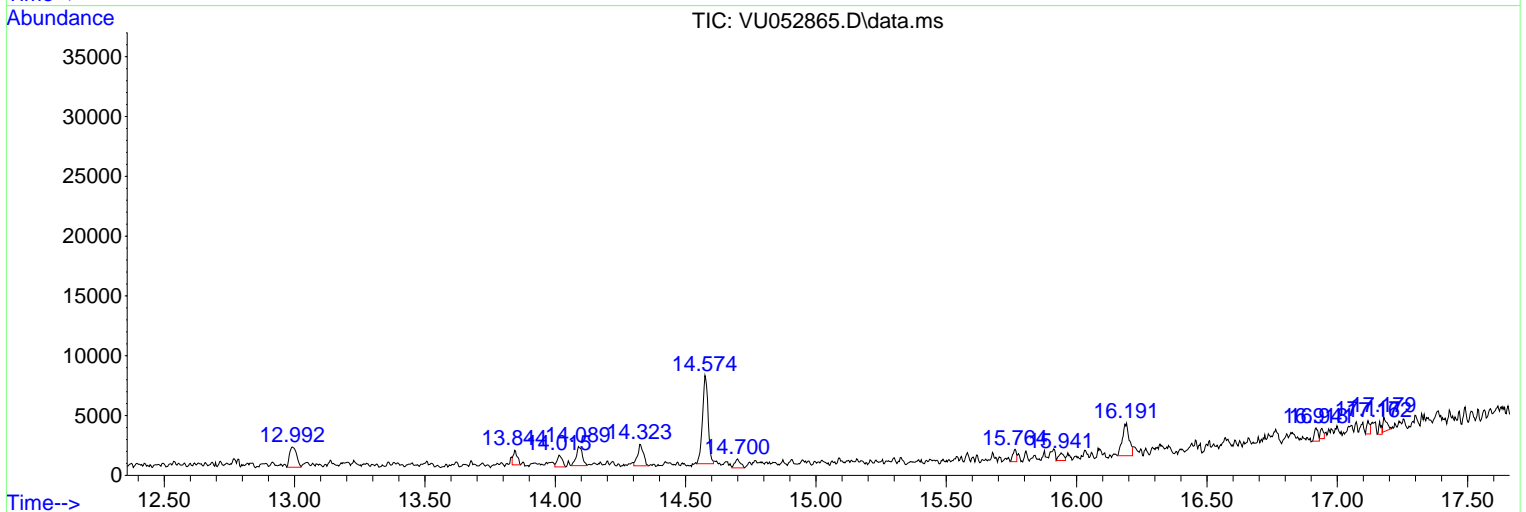
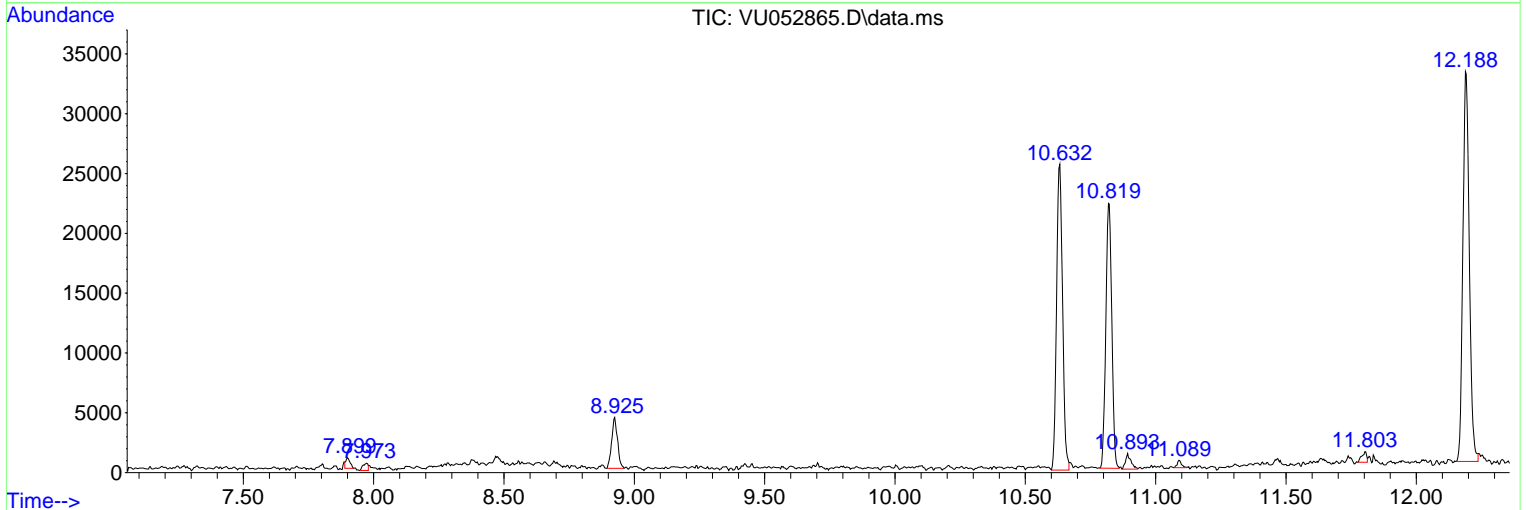
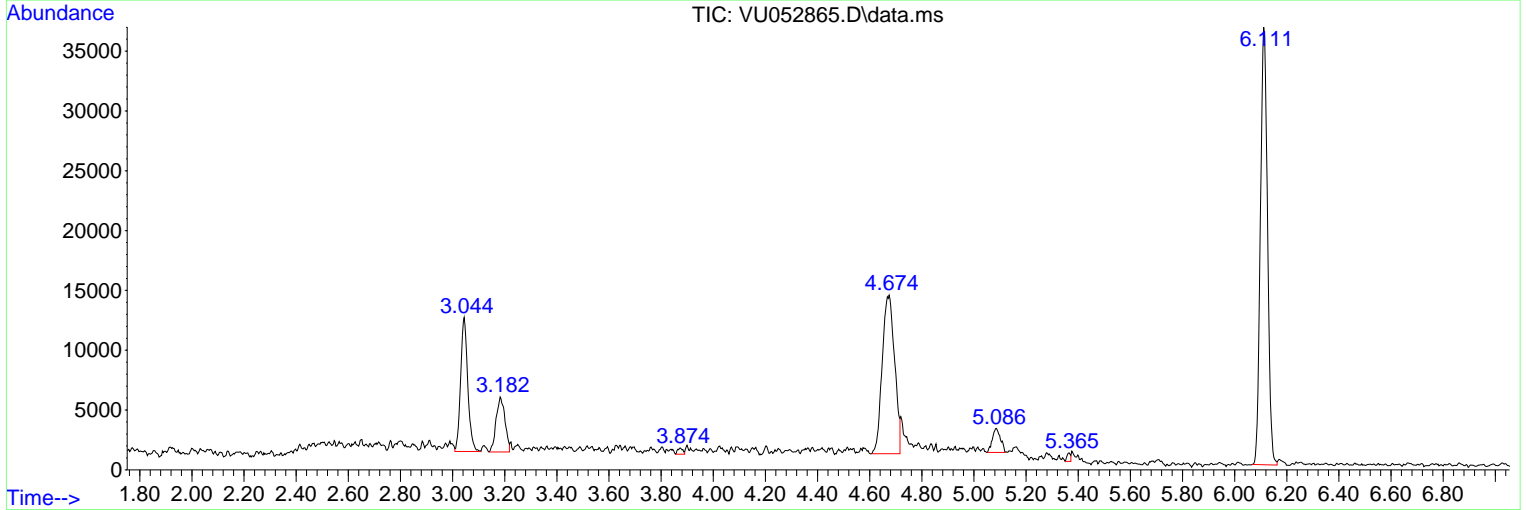
Sum of corrected areas: 328998

Data Path : Z:\voasrv\HPCHEM1\MSVOA_U\Data\VU013023\
 Data File : VU052864.D
 Acq On : 30 Jan 2023 13:28
 Operator : JC/MD
 Sample : 01245-11
 Misc : 25.0mL/MSVOA_U/WATER
 ALS Vial : 7 Sample Multiplier: 1

Instrument :
 MSVOA_U
 ClientSampleId :
 PT-EBCP-WS

Quant Method : Z:\voasrv\HPCHEM1\MSVOA_U\Method\524U012323DW.M
 Quant Title : METHOD 524.2 VOLATILES DRINKING WATER

TIC Library : C:\Database\NIST20.L
 TIC Integration Parameters: LSCINT.P



Data Path : Z:\voasrv\HPCHEM1\MSVOA_U\Data\VU013023\
Data File : VU052864.D
Acq On : 30 Jan 2023 13:28
Operator : JC/MD
Sample : 01245-11
Misc : 25.0mL/MSVOA_U/WATER
ALS Vial : 7 Sample Multiplier: 1

Instrument :
MSVOA_U
ClientSampleId :
PT-EBCP-WS

Quant Method : Z:\voasrv\HPCHEM1\MSVOA_U\Method\524U012323DW.M
Quant Title : METHOD 524.2 VOLATILES DRINKING WATER

TIC Library : C:\Database\NIST20.L
TIC Integration Parameters: LSCINT.P

No Library Search Compounds Detected

Data Path : Z:\voasrv\HPCHEM1\MSVOA_U\Data\VU013023\
Data File : VU052864.D
Acq On : 30 Jan 2023 13:28
Operator : JC/MD
Sample : 01245-11
Misc : 25.0mL/MSVOA_U/WATER
ALS Vial : 7 Sample Multiplier: 1

Instrument :
MSVOA_U
ClientSampleId :
PT-EBCP-WS

Quant Method : Z:\voasrv\HPCHEM1\MSVOA_U\Method\524U012323DW.M
Quant Title : METHOD 524.2 VOLATILES DRINKING WATER

TIC Library : C:\Database\NIST0.L
TIC Integration Parameters: LSCINT.P

TIC Top Hit name	RT	EstConc	Units	Response	--Internal Standard--		
					#	RT	Resp Conc
