

Data Path : Z:\voasrv\HPCHEM1\MSVOA_U\Data\VU020123\
 Data File : VU052917.D
 Acq On : 01 Feb 2023 19:50
 Operator : JC/MD
 Sample : 01381-10
 Misc : 5.0mL/MSVOA_U/WATER
 ALS Vial : 24 Sample Multiplier: 1

Instrument :
 MSVOA_U
 ClientSampleId :
 A44K7

Integration Parameters: LSCINT.P
 Integrator: RTE
 Smoothing : OFF
 Sampling : 1
 Start Thrs : 0.2
 Stop Thrs : 0
 Filtering: 5
 Min Area: 0 % of largest Peak
 Max Peaks: 100
 Peak Location: TOP

If leading or trailing edge < 100 prefer < Baseline drop else tangent >
 Peak separation: 5

Method : Z:\voasrv\HPCHEM1\MSVOA_U\Method\SFAMULM012623WMA.M
 Title : VOC Analysis

Signal : TIC: VU052917.D\data.ms

peak #	R.T. min	first scan	max scan	last scan	PK TY	peak height	corr. area	corr. % max.	% of total
1	1.359	3	6	8	rBV	602	328	0.00%	0.000%
2	1.472	35	41	49	rBV4	2620	3310	0.00%	0.000%
3	1.517	51	55	60	rVB2	830	878	0.00%	0.000%
4	1.597	72	80	97	rVB	72638	90787	0.02%	0.008%
5	1.684	97	107	119	rBV	12212	16186	0.00%	0.001%
6	1.797	136	142	143	rBV3	767	782	0.00%	0.000%
7	1.813	145	147	148	rBV3	767	361	0.00%	0.000%
8	1.899	166	174	193	rVB	72324	105215	0.03%	0.009%
9	1.977	195	198	205	rVB2	1050	1236	0.00%	0.000%
10	2.170	254	258	261	rBV2	410	339	0.00%	0.000%
11	2.198	261	267	275	rVV2	1551	2069	0.00%	0.000%
12	2.340	307	311	317	rVB2	367	319	0.00%	0.000%
13	2.562	367	380	397	rBV2	171108	292023	0.08%	0.026%
14	2.713	423	427	430	rBB	403	331	0.00%	0.000%
15	2.784	446	449	451	rBV	504	396	0.00%	0.000%
16	3.041	518	529	549	rBB3	11122	25698	0.01%	0.002%
17	3.169	566	569	571	rBV2	618	484	0.00%	0.000%
18	3.350	616	625	638	rBB7	5191	10432	0.00%	0.001%
19	3.690	719	731	743	rBB7	3486	7702	0.00%	0.001%
20	3.867	773	786	789	rBV2	1232	1890	0.00%	0.000%
21	4.530	975	992	1005	rBB5	6542	15100	0.00%	0.001%
22	4.658	1011	1032	1059	rBV2	170228	461699	0.12%	0.042%
23	5.057	1140	1156	1182	rBV2	151689	374551	0.10%	0.034%
24	5.314	1219	1236	1247	rBV3	26188	58899	0.02%	0.005%
25	5.385	1248	1258	1271	rVB4	12774	27887	0.01%	0.003%
26	5.449	1275	1278	1280	rBV2	584	475	0.00%	0.000%
27	5.584	1316	1320	1322	rBV3	828	694	0.00%	0.000%
28	5.722	1341	1363	1370	rBV2	277290	765608	0.20%	0.069%
29	5.886	1409	1414	1415	rBV3	1546	1079	0.00%	0.000%
30	5.980	1437	1443	1444	rBV2	1353	1260	0.00%	0.000%
31	6.128	1481	1489	1499	rBB5	3188	5221	0.00%	0.000%
32	6.247	1511	1526	1546	rBV	244120	474766	0.12%	0.043%
33	6.571	1598	1627	1653	rBV4	88746920	222775356	58.26%	20.101%
34	6.693	1656	1665	1679	rVB	183740	345614	0.09%	0.031%
35	7.185	1812	1818	1826	rBV10	2143	3508	0.00%	0.000%
36	7.272	1840	1845	1850	rBV5	475	635	0.00%	0.000%

Data Path : Z:\voasrv\HPCHEM1\MSVOA_U\Data\VU020123\
 Data File : VU052917.D
 Acq On : 01 Feb 2023 19:50
 Operator : JC/MD
 Sample : 01381-10
 Misc : 5.0mL/MSVOA_U/WATER
 ALS Vial : 24 Sample Multiplier: 1

Instrument :
 MSVOA_U
 ClientSampleId :
 A44K7

Integration Parameters: LSCINT.P

Integrator: RTE
 Smoothing : OFF Filtering: 5
 Sampling : 1 Min Area: 0 % of largest Peak
 Start Thrs: 0.2 Max Peaks: 100
 Stop Thrs : 0 Peak Location: TOP

If leading or trailing edge < 100 prefer < Baseline drop else tangent >
 Peak separation: 5

Method : Z:\voasrv\HPCHEM1\MSVOA_U\Method\SFAMULM012623WMA.M
 Title : VOC Analysis

37	7.375	1874	1877	1882	rBV2	361	326	0.00%	0.000%
38	7.565	1923	1936	1961	rVB	111020	199956	0.05%	0.018%
39	7.690	1966	1975	1980	rBV4	1146	1941	0.00%	0.000%
40	7.806	2007	2011	2018	rVV5	807	1121	0.00%	0.000%
41	7.896	2025	2039	2051	rBV	422653	721934	0.19%	0.065%
42	7.967	2051	2061	2078	rVB	194963	333830	0.09%	0.030%
43	8.050	2085	2087	2091	rVV4	852	605	0.00%	0.000%
44	8.073	2091	2094	2100	rVB2	1049	910	0.00%	0.000%
45	8.176	2115	2126	2142	rBV2	77762	141561	0.04%	0.013%
46	8.269	2149	2155	2163	rVB5	842	1365	0.00%	0.000%
47	8.404	2189	2197	2206	rVB7	2496	4353	0.00%	0.000%
48	8.475	2207	2219	2224	rBV4	3338	5619	0.00%	0.001%
49	8.552	2233	2243	2253	rVB	18839	30383	0.01%	0.003%
50	8.645	2259	2272	2300	rBV	158272	306716	0.08%	0.028%
51	8.771	2303	2311	2317	rBV6	3383	5326	0.00%	0.000%
52	9.147	2424	2428	2433	rBB2	353	321	0.00%	0.000%
53	9.250	2451	2460	2469	rBB5	1560	2616	0.00%	0.000%
54	9.330	2481	2485	2487	rVV2	477	386	0.00%	0.000%
55	9.488	2501	2534	2557	rBV4	88032632	259861669	67.96%	23.448%
56	10.025	2698	2701	2709	rVB4	783	863	0.00%	0.000%
57	10.063	2709	2713	2715	rBV2	1013	827	0.00%	0.000%
58	10.102	2718	2725	2731	rBV5	5515	8827	0.00%	0.001%
59	10.185	2748	2751	2754	rVB3	453	340	0.00%	0.000%
60	10.237	2762	2767	2769	rBV3	503	480	0.00%	0.000%
61	10.359	2801	2805	2809	rVB3	569	423	0.00%	0.000%
62	10.443	2819	2831	2835	rBV5	3057	4605	0.00%	0.000%
63	10.561	2860	2868	2878	rVB3	7168	11404	0.00%	0.001%
64	10.642	2890	2893	2897	rBV3	421	392	0.00%	0.000%
65	10.754	2914	2928	2961	rVB	269721	462891	0.12%	0.042%
66	10.896	2961	2972	2979	rBV4	6134	11335	0.00%	0.001%
67	10.934	2980	2984	2991	rVV3	2449	3080	0.00%	0.000%
68	10.989	2991	3001	3010	rVV2	32979	58479	0.02%	0.005%
69	11.047	3014	3019	3026	rVV3	12993	19788	0.01%	0.002%
70	11.095	3027	3034	3048	rVB3	21059	34759	0.01%	0.003%
71	11.211	3067	3070	3073	rVV2	442	360	0.00%	0.000%
72	11.256	3080	3084	3085	rVV2	560	310	0.00%	0.000%
73	11.295	3085	3096	3104	rVV4	3734	6511	0.00%	0.001%
74	11.372	3118	3120	3124	rVV2	321	296	0.00%	0.000%
75	11.471	3141	3151	3156	rBV2	11366	16749	0.00%	0.002%
76	11.513	3158	3164	3175	rVB4	9394	14759	0.00%	0.001%

Data Path : Z:\voasrv\HPCHEM1\MSVOA_U\Data\VU020123\
 Data File : VU052917.D
 Acq On : 01 Feb 2023 19:50
 Operator : JC/MD
 Sample : 01381-10
 Misc : 5.0mL/MSVOA_U/WATER
 ALS Vial : 24 Sample Multiplier: 1

Instrument :
 MSVOA_U
 ClientSampleId :
 A44K7

Integration Parameters: LSCINT.P

Integrator: RTE
 Smoothing : OFF Filtering: 5
 Sampling : 1 Min Area: 0 % of largest Peak
 Start Thrs: 0.2 Max Peaks: 100
 Stop Thrs : 0 Peak Location: TOP

If leading or trailing edge < 100 prefer < Baseline drop else tangent >
 Peak separation: 5

Method : Z:\voasrv\HPCHEM1\MSVOA_U\Method\SFAMULM012623WMA.M
 Title : VOC Analysis

77	11.626	3193	3199	3212	rVB4	3533	5297	0.00%	0.000%
78	11.748	3219	3237	3250	rBV	10455223	18584883	4.86%	1.677%
79	11.851	3250	3269	3310	rVB3	54970576	101797408	26.62%	9.185%
80	12.066	3328	3336	3353	rBV9	17465	46496	0.01%	0.004%
81	12.266	3365	3398	3435	rBV5	126317791	382370666	100.00%	34.502%
82	12.687	3520	3529	3540	rVB	43327	68805	0.02%	0.006%
83	12.896	3586	3594	3604	rVB3	21605	32616	0.01%	0.003%
84	12.967	3606	3616	3631	rVB2	37323	61772	0.02%	0.006%
85	13.076	3643	3650	3655	rBV5	2772	4172	0.00%	0.000%
86	13.150	3662	3673	3677	rBV4	22487	42378	0.01%	0.004%
87	13.246	3678	3703	3724	rVV2	45120586	111597379	29.19%	10.070%
88	13.838	3874	3887	3908	rVB	2705043	4156284	1.09%	0.375%
89	13.960	3913	3925	3940	rBV	435279	685285	0.18%	0.062%
90	14.085	3955	3964	3976	rVB	33999	54964	0.01%	0.005%
91	14.327	4027	4039	4057	rVB	355846	568261	0.15%	0.051%
92	14.642	4130	4137	4143	rBV6	5265	6782	0.00%	0.001%
93	14.844	4191	4200	4208	rBV4	7706	13555	0.00%	0.001%
94	15.005	4248	4250	4254	rVB4	793	497	0.00%	0.000%
95	15.587	4428	4431	4436	rVB3	1131	941	0.00%	0.000%
96	15.616	4437	4440	4442	rBV3	849	442	0.00%	0.000%
97	15.745	4478	4480	4482	rBV2	667	380	0.00%	0.000%
98	15.954	4543	4545	4548	rBV3	778	466	0.00%	0.000%
99	16.050	4573	4575	4576	rBV2	821	412	0.00%	0.000%
100	16.336	4660	4664	4667	rBV3	1358	1084	0.00%	0.000%

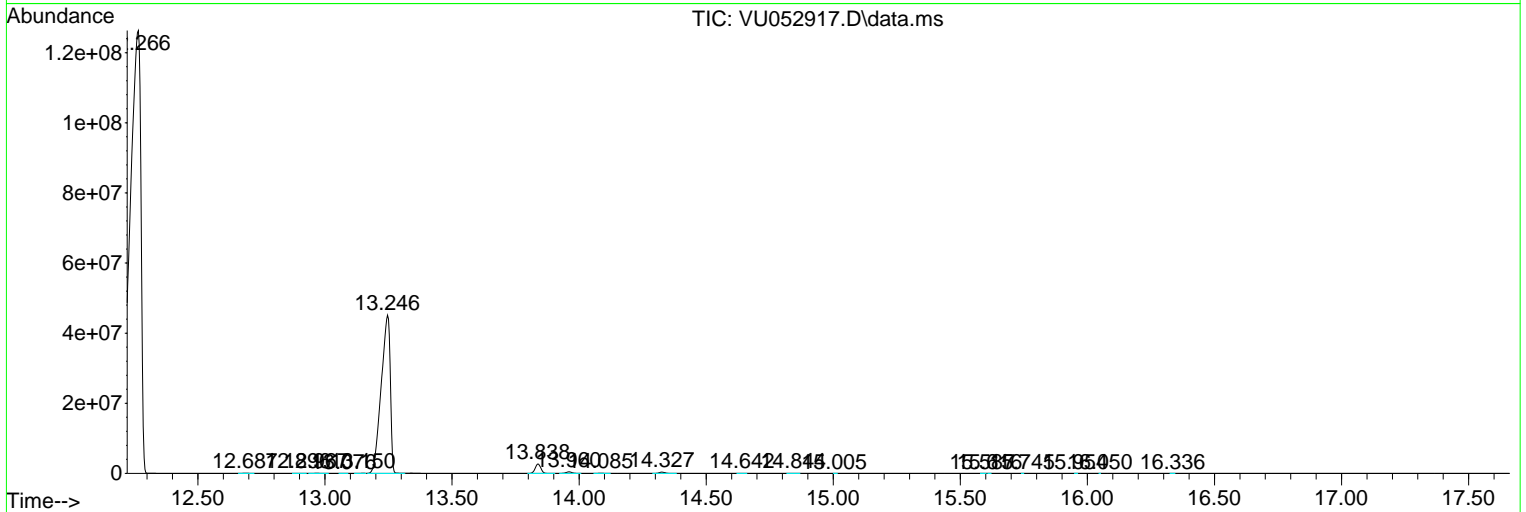
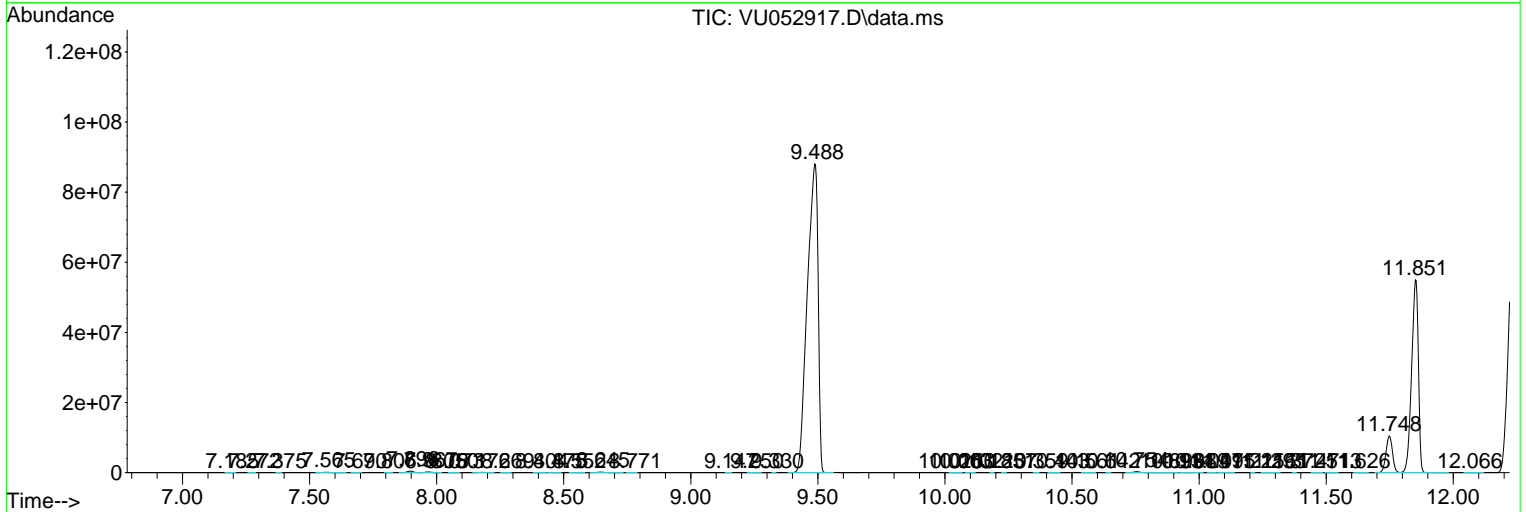
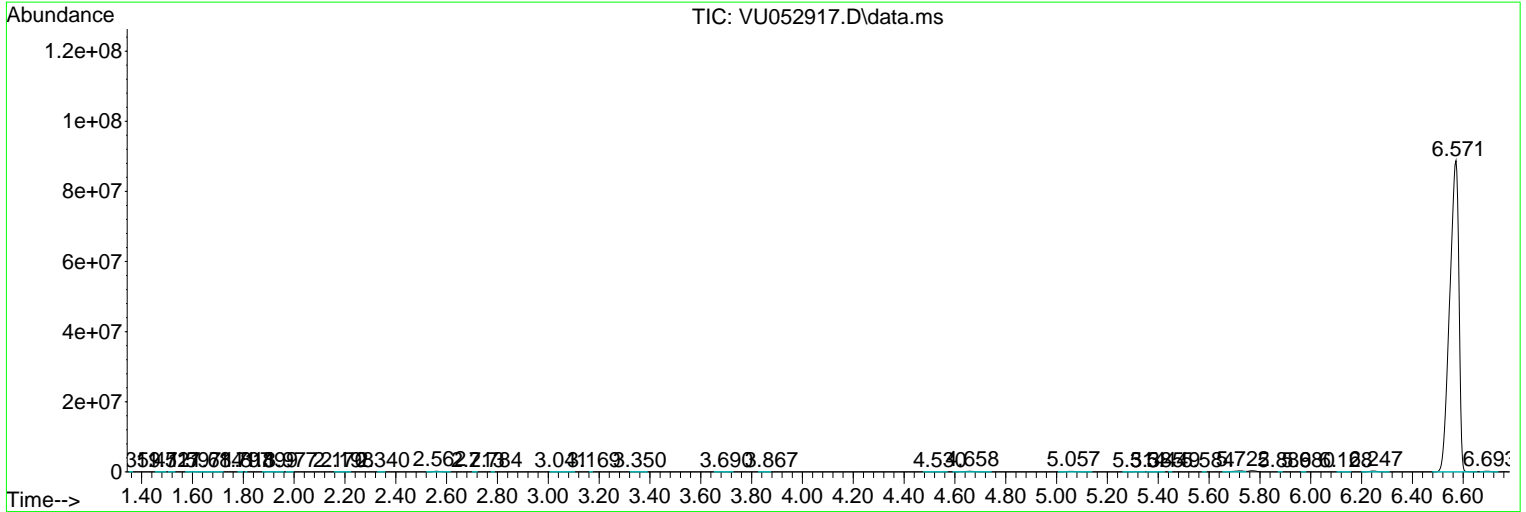
Sum of corrected areas: 1108252759

Data Path : Z:\voasrv\HPCHEM1\MSVOA_U\Data\VU020123\
 Data File : VU052917.D
 Acq On : 01 Feb 2023 19:50
 Operator : JC/MD
 Sample : 01381-10
 Misc : 5.0mL/MSVOA_U/WATER
 ALS Vial : 24 Sample Multiplier: 1

Instrument :
 MSVOA_U
 ClientSampleId :
 A44K7

Quant Method : Z:\voasrv\HPCHEM1\MSVOA_U\Method\SFAMULM012623WMA.M
 Quant Title : VOC Analysis

TIC Library : C:\Database\NIST20.L
 TIC Integration Parameters: LSCINT.P



Library Search Compound Report

Data Path : Z:\voasrv\HPCHEM1\MSVOA_U\Data\VU020123\
Data File : VU052917.D
Acq On : 01 Feb 2023 19:50
Operator : JC/MD
Sample : 01381-10
Misc : 5.0mL/MSVOA_U/WATER
ALS Vial : 24 Sample Multiplier: 1

Instrument :
MSVOA_U
ClientSampleId :
A44K7

Quant Method : Z:\voasrv\HPCHEM1\MSVOA_U\Method\SFAMULM012623WMA.M
Quant Title : VOC Analysis

TIC Library : C:\Database\NIST20.L
TIC Integration Parameters: LSCINT.P

No Library Search Compounds Detected

Data Path : Z:\voasrv\HPCHEM1\MSVOA_U\Data\VU020123\
Data File : VU052917.D
Acq On : 01 Feb 2023 19:50
Operator : JC/MD
Sample : 01381-10
Misc : 5.0mL/MSVOA_U/WATER
ALS Vial : 24 Sample Multiplier: 1

Instrument :
MSVOA_U
ClientSampleId :
A44K7

Quant Method : Z:\voasrv\HPCHEM1\MSVOA_U\Method\SFAMULM012623WMA.M
Quant Title : VOC Analysis

TIC Library : C:\Database\NIST0.L
TIC Integration Parameters: LSCINT.P

TIC Top Hit name	RT	EstConc	Units	Response	#	RT	Resp	Conc
------------------	----	---------	-------	----------	---	----	------	------
