

Data Path : Z:\voasrv\HPCHEM1\MSVOA_U\Data\VU020323\
 Data File : VU052940.D
 Acq On : 03 Feb 2023 13:14
 Operator : JC/MD
 Sample : VU0203WBL01
 Misc : 5.0mL/MSVOA_U/WATER
 ALS Vial : 5 Sample Multiplier: 1

Instrument :
 MSVOA_U
 ClientSampleId :
 VBLK043

Integration Parameters: LSCINT.P

Integrator: RTE
 Smoothing : OFF
 Sampling : 1
 Start Thrs: 0.2
 Stop Thrs : 0

Filtering: 5
 Min Area: 0 % of largest Peak
 Max Peaks: 100
 Peak Location: TOP

If leading or trailing edge < 100 prefer < Baseline drop else tangent >
 Peak separation: 5

Method : Z:\voasrv\HPCHEM1\MSVOA_U\Method\SFAMULM012623WMA.M
 Title : VOC Analysis

Signal : TIC: VU052940.D\data.ms

peak #	R.T. min	first scan	max scan	last scan	PK TY	peak height	corr. area	corr. % max.	% of total
1	1.598	73	80	93	rVB	79861	93008	11.90%	1.634%
2	1.913	169	178	196	rBV	76761	102502	13.11%	1.801%
3	2.566	369	381	399	rVB	159211	261896	33.51%	4.602%
4	2.649	402	407	412	rBV	335	440	0.06%	0.008%
5	2.697	417	422	426	rBB	379	350	0.04%	0.006%
6	2.723	427	430	433	rBV	328	315	0.04%	0.006%
7	2.823	457	461	463	rBV	289	198	0.03%	0.003%
8	2.987	509	512	514	rBV2	246	155	0.02%	0.003%
9	3.042	520	529	539	rBV4	3309	5534	0.71%	0.097%
10	3.164	562	567	568	rBV	524	422	0.05%	0.007%
11	3.411	642	644	649	rBB	208	177	0.02%	0.003%
12	3.585	694	698	700	rBV	141	143	0.02%	0.003%
13	3.633	709	713	716	rBB	158	154	0.02%	0.003%
14	3.804	762	766	768	rBV	165	158	0.02%	0.003%
15	4.016	829	832	837	rBB	162	186	0.02%	0.003%
16	4.164	876	878	880	rBV2	262	147	0.02%	0.003%
17	4.331	927	930	934	rBB	174	160	0.02%	0.003%
18	4.623	1008	1021	1052	rBV	54456	144551	18.49%	2.540%
19	4.874	1096	1099	1102	rBV2	283	250	0.03%	0.004%
20	4.903	1106	1108	1111	rVB2	316	192	0.02%	0.003%
21	4.926	1112	1115	1118	rBV	253	173	0.02%	0.003%
22	4.967	1125	1128	1130	rBB	261	151	0.02%	0.003%
23	4.993	1131	1136	1140	rBB	184	186	0.02%	0.003%
24	5.058	1140	1156	1178	rBV	152321	331783	42.45%	5.830%
25	5.154	1182	1186	1188	rBV2	291	257	0.03%	0.005%
26	5.292	1222	1229	1232	rBB	320	319	0.04%	0.006%
27	5.376	1252	1255	1256	rBV	369	200	0.03%	0.004%
28	5.385	1256	1258	1261	rVB2	364	188	0.02%	0.003%
29	5.414	1264	1267	1269	rBV2	260	176	0.02%	0.003%
30	5.720	1340	1362	1392	rBV2	283280	781642	100.00%	13.736%
31	6.244	1511	1525	1550	rBV	230002	433031	55.40%	7.610%
32	6.430	1579	1583	1585	rBV2	313	260	0.03%	0.005%
33	6.527	1607	1613	1621	rBB5	1047	1564	0.20%	0.027%
34	6.636	1645	1647	1649	rBV	259	150	0.02%	0.003%
35	6.684	1649	1662	1685	rVV	181295	356017	45.55%	6.256%
36	6.800	1695	1698	1700	rBV	278	197	0.03%	0.003%

Data Path : Z:\voasrv\HPCHEM1\MSVOA_U\Data\VU020323\
 Data File : VU052940.D
 Acq On : 03 Feb 2023 13:14
 Operator : JC/MD
 Sample : VU0203WBL01
 Misc : 5.0mL/MSVOA_U/WATER
 ALS Vial : 5 Sample Multiplier: 1

Instrument :
 MSVOA_U
 ClientSampleId :
 VBLK043

Integration Parameters: LSCINT.P

Integrator: RTE
 Smoothing : OFF
 Sampling : 1
 Start Thrs: 0.2
 Stop Thrs : 0

Filtering: 5
 Min Area: 0 % of largest Peak
 Max Peaks: 100
 Peak Location: TOP

If leading or trailing edge < 100 prefer < Baseline drop else tangent >
 Peak separation: 5

Method : Z:\voasrv\HPCHEM1\MSVOA_U\Method\SFAMULM012623WMA.M
 Title : VOC Analysis

37	7.183	1809	1817	1828	rBB3	1214	2002	0.26%	0.035%
38	7.270	1841	1844	1847	rBB	221	164	0.02%	0.003%
39	7.562	1923	1935	1951	rBV	93377	162826	20.83%	2.861%
40	7.691	1968	1975	1976	rBV2	554	513	0.07%	0.009%
41	7.893	2025	2038	2058	rBV	350179	599270	76.67%	10.531%
42	8.051	2083	2087	2094	rVB2	461	509	0.07%	0.009%
43	8.173	2113	2125	2147	rVB	67196	112575	14.40%	1.978%
44	8.260	2149	2152	2155	rBV3	344	258	0.03%	0.005%
45	8.327	2170	2173	2176	rBV	312	234	0.03%	0.004%
46	8.369	2184	2186	2189	rBV2	265	182	0.02%	0.003%
47	8.630	2256	2267	2293	rBV2	152782	305989	39.15%	5.377%
48	8.803	2319	2321	2323	rBV	279	141	0.02%	0.002%
49	8.848	2333	2335	2338	rVB	269	149	0.02%	0.003%
50	8.871	2338	2342	2346	rBV	199	239	0.03%	0.004%
51	8.974	2371	2374	2379	rBV	170	218	0.03%	0.004%
52	9.032	2388	2392	2398	rBB	175	239	0.03%	0.004%
53	9.231	2452	2454	2457	rBB	261	151	0.02%	0.003%
54	9.276	2465	2468	2472	rVB	222	144	0.02%	0.003%
55	9.340	2485	2488	2491	rBB	197	147	0.02%	0.003%
56	9.414	2498	2511	2532	rBV	332918	540787	69.19%	9.503%
57	9.572	2555	2560	2565	rBB2	360	433	0.06%	0.008%
58	9.610	2568	2572	2576	rBB	181	186	0.02%	0.003%
59	9.636	2577	2580	2583	rBV	191	170	0.02%	0.003%
60	9.681	2592	2594	2597	rBV2	321	210	0.03%	0.004%
61	9.700	2598	2600	2603	rVB	262	163	0.02%	0.003%
62	9.807	2631	2633	2636	rBV	192	149	0.02%	0.003%
63	9.868	2647	2652	2656	rBB	220	245	0.03%	0.004%
64	9.909	2662	2665	2669	rBV	173	180	0.02%	0.003%
65	9.999	2691	2693	2694	rBV	292	144	0.02%	0.003%
66	10.173	2744	2747	2751	rBB	197	153	0.02%	0.003%
67	10.199	2752	2755	2758	rBV	242	194	0.02%	0.003%
68	10.241	2766	2768	2771	rBV	178	150	0.02%	0.003%
69	10.295	2782	2785	2788	rBV	169	159	0.02%	0.003%
70	10.581	2871	2874	2877	rBV	155	144	0.02%	0.003%
71	10.633	2885	2890	2894	rVB3	524	467	0.06%	0.008%
72	10.752	2914	2927	2947	rBV	249875	401153	51.32%	7.049%
73	10.871	2961	2964	2967	rVV	223	154	0.02%	0.003%
74	10.906	2972	2975	2981	rBB	204	240	0.03%	0.004%
75	10.958	2987	2991	2994	rBV	222	204	0.03%	0.004%
76	11.080	3026	3029	3032	rBV	280	184	0.02%	0.003%

Data Path : Z:\voasrv\HPCHEM1\MSVOA_U\Data\VU020323\
 Data File : VU052940.D
 Acq On : 03 Feb 2023 13:14
 Operator : JC/MD
 Sample : VU0203WBL01
 Misc : 5.0mL/MSVOA_U/WATER
 ALS Vial : 5 Sample Multiplier: 1

Instrument :
 MSVOA_U
 ClientSampleId :
 VBLK043

Integration Parameters: LSCINT.P

Integrator: RTE
 Smoothing : OFF
 Sampling : 1
 Start Thrs: 0.2
 Stop Thrs : 0

Filtering: 5
 Min Area: 0 % of largest Peak
 Max Peaks: 100
 Peak Location: TOP

If leading or trailing edge < 100 prefer < Baseline drop else tangent >
 Peak separation: 5

Method : Z:\voasrv\HPCHEM1\MSVOA_U\Method\SFAMULM012623WMA.M
 Title : VOC Analysis

77	11.231	3071	3076	3078	rBV	291	220	0.03%	0.004%
78	11.398	3126	3128	3133	rBV	144	183	0.02%	0.003%
79	11.511	3160	3163	3167	rVB	234	158	0.02%	0.003%
80	11.585	3182	3186	3191	rBV	255	321	0.04%	0.006%
81	11.671	3209	3213	3216	rBV	205	228	0.03%	0.004%
82	11.758	3238	3240	3243	rVB2	352	145	0.02%	0.003%
83	11.806	3243	3255	3273	rBV	308398	494032	63.20%	8.681%
84	11.951	3296	3300	3305	rBV2	216	200	0.03%	0.004%
85	12.028	3321	3324	3328	rBV	214	232	0.03%	0.004%
86	12.189	3361	3374	3388	rBV	338985	541340	69.26%	9.513%
87	12.343	3415	3422	3424	rBV2	322	410	0.05%	0.007%
88	12.498	3467	3470	3473	rBV	223	211	0.03%	0.004%
89	12.771	3548	3555	3562	rVB2	930	1061	0.14%	0.019%
90	12.822	3567	3571	3575	rBV2	226	215	0.03%	0.004%
91	12.986	3620	3622	3627	rBV	258	267	0.03%	0.005%
92	13.221	3692	3695	3697	rBV2	390	301	0.04%	0.005%
93	13.948	3919	3921	3925	rBV2	274	202	0.03%	0.004%
94	14.192	3994	3997	4000	rVB	269	172	0.02%	0.003%
95	14.324	4034	4038	4039	rBV	406	265	0.03%	0.005%
96	14.459	4077	4080	4083	rBV	483	359	0.05%	0.006%
97	14.546	4103	4107	4108	rBV	369	214	0.03%	0.004%
98	14.684	4147	4150	4152	rBV2	366	248	0.03%	0.004%
99	14.803	4184	4187	4189	rBV2	228	172	0.02%	0.003%
100	14.941	4224	4230	4234	rBV2	372	426	0.05%	0.007%

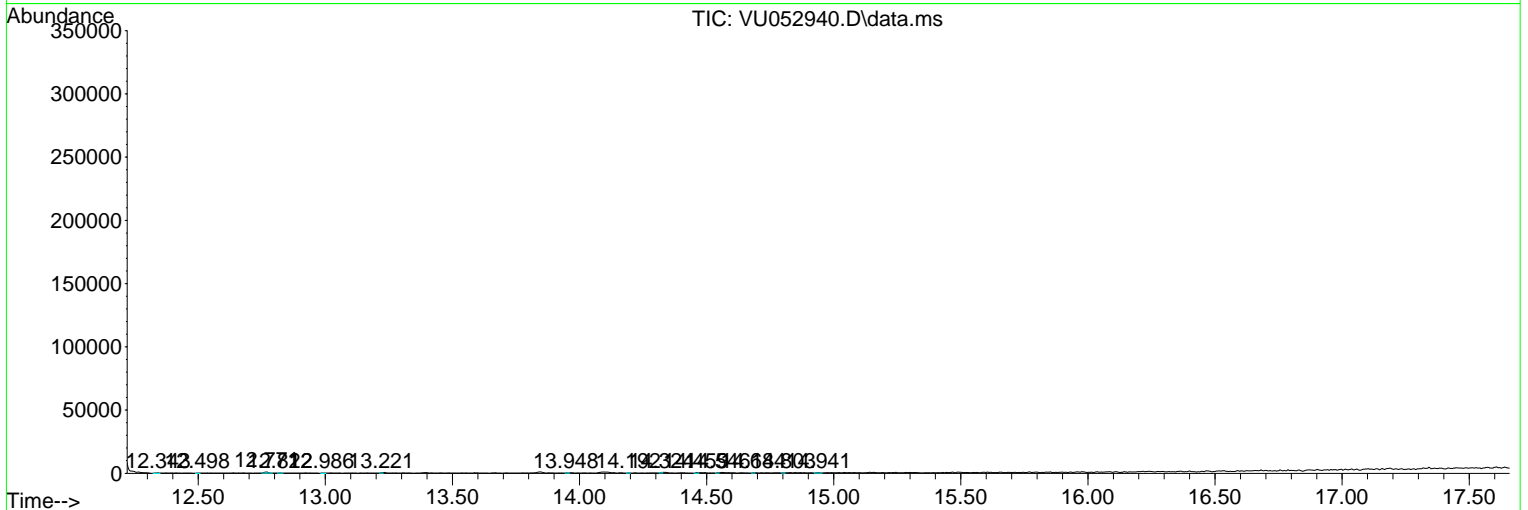
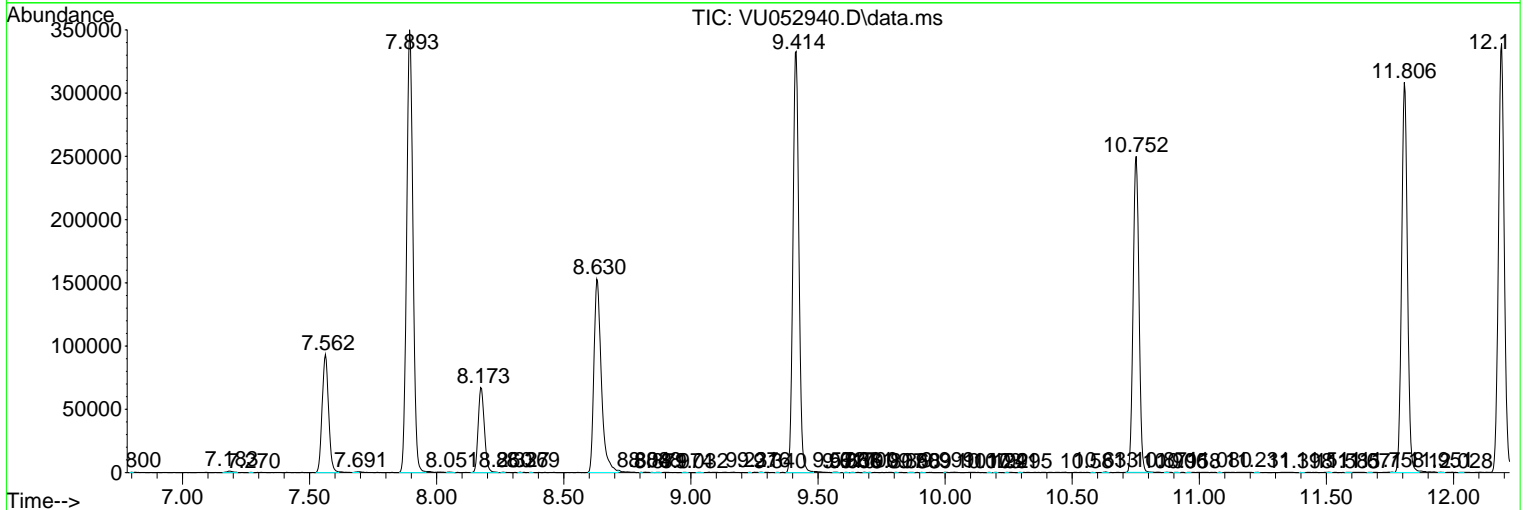
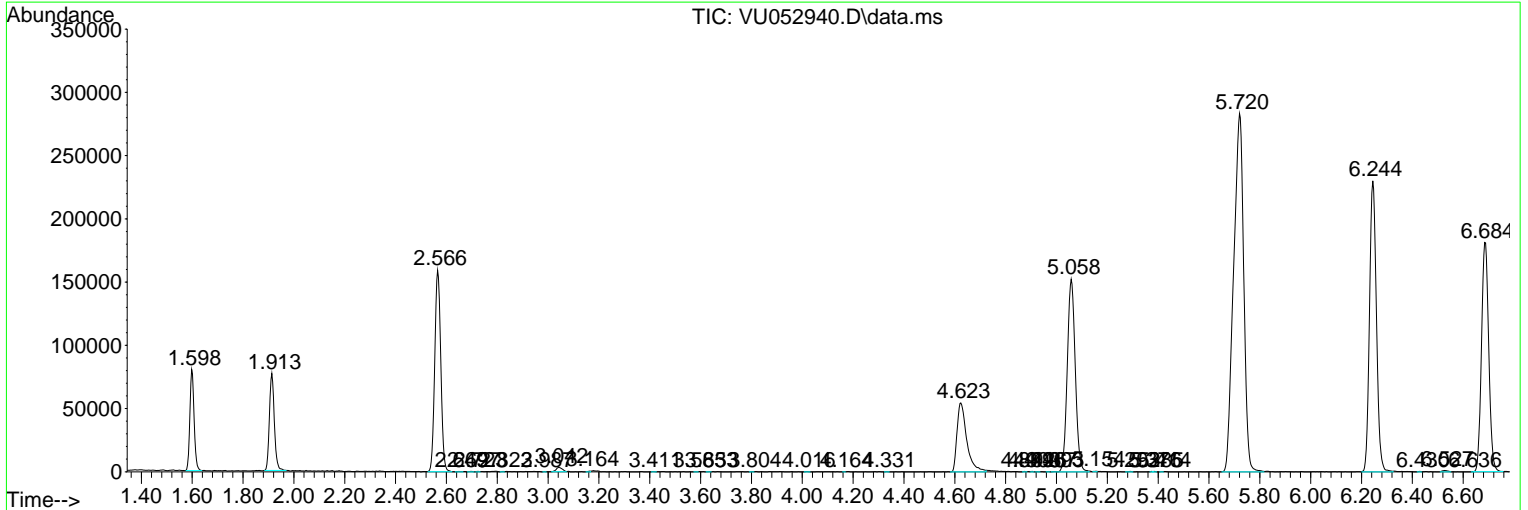
Sum of corrected areas: 5690633

Data Path : Z:\voasrv\HPCHEM1\MSVOA_U\Data\VU020323\
 Data File : VU052940.D
 Acq On : 03 Feb 2023 13:14
 Operator : JC/MD
 Sample : VU0203WBL01
 Misc : 5.0mL/MSVOA_U/WATER
 ALS Vial : 5 Sample Multiplier: 1

Instrument :
 MSVOA_U
ClientSampleId :
 VBLK043

Quant Method : Z:\voasrv\HPCHEM1\MSVOA_U\Method\SFAMULM012623WMA.M
 Quant Title : VOC Analysis

TIC Library : C:\Database\NIST20.L
 TIC Integration Parameters: LSCINT.P



Data Path : Z:\voasrv\HPCHEM1\MSVOA_U\Data\VU020323\
Data File : VU052940.D
Acq On : 03 Feb 2023 13:14
Operator : JC/MD
Sample : VU0203WBL01
Misc : 5.0mL/MSVOA_U/WATER
ALS Vial : 5 Sample Multiplier: 1

Instrument :
MSVOA_U
ClientSampleId :
VBLK043

Quant Method : Z:\voasrv\HPCHEM1\MSVOA_U\Method\SFAMULM012623WMA.M
Quant Title : VOC Analysis

TIC Library : C:\Database\NIST20.L
TIC Integration Parameters: LSCINT.P

No Library Search Compounds Detected

Data Path : Z:\voasrv\HPCHEM1\MSVOA_U\Data\VU020323\
Data File : VU052940.D
Acq On : 03 Feb 2023 13:14
Operator : JC/MD
Sample : VU0203WBL01
Misc : 5.0mL/MSVOA_U/WATER
ALS Vial : 5 Sample Multiplier: 1

Instrument :
MSVOA_U
ClientSampleId :
VBLK043

Quant Method : Z:\voasrv\HPCHEM1\MSVOA_U\Method\SFAMULM012623WMA.M
Quant Title : VOC Analysis

TIC Library : C:\Database\NIST20.L
TIC Integration Parameters: LSCINT.P

TIC Top Hit name	RT	EstConc	Units	Response	#	RT	Resp	Conc
------------------	----	---------	-------	----------	---	----	------	------
