

Data Path : Z:\voasrv\HPCHEM1\MSVOA_U\Data\VU020421\
 Data File : VU042267.D
 Acq On : 04 Feb 2021 15:49
 Operator : SY/MD
 Sample : M1323-02DL 5X
 Misc : 25.0mL/MSVOA_U/WATER
 ALS Vial : 11 Sample Multiplier: 1

Instrument :
 MSVOA_U
 ClientSampled :
 F1E67DL

Quant Time: Feb 05 02:25:24 2021
 Quant Method : Z:\voasrv\HPCHEM1\MSVOA_U\Method\SOMUTR012021WMA.M
 Quant Title : TRACE VOA SOM01.0
 QLast Update : Fri Feb 05 02:23:43 2021
 Response via : Initial Calibration

Compound	R.T.	QIon	Response	Conc	Units	Dev(Min)

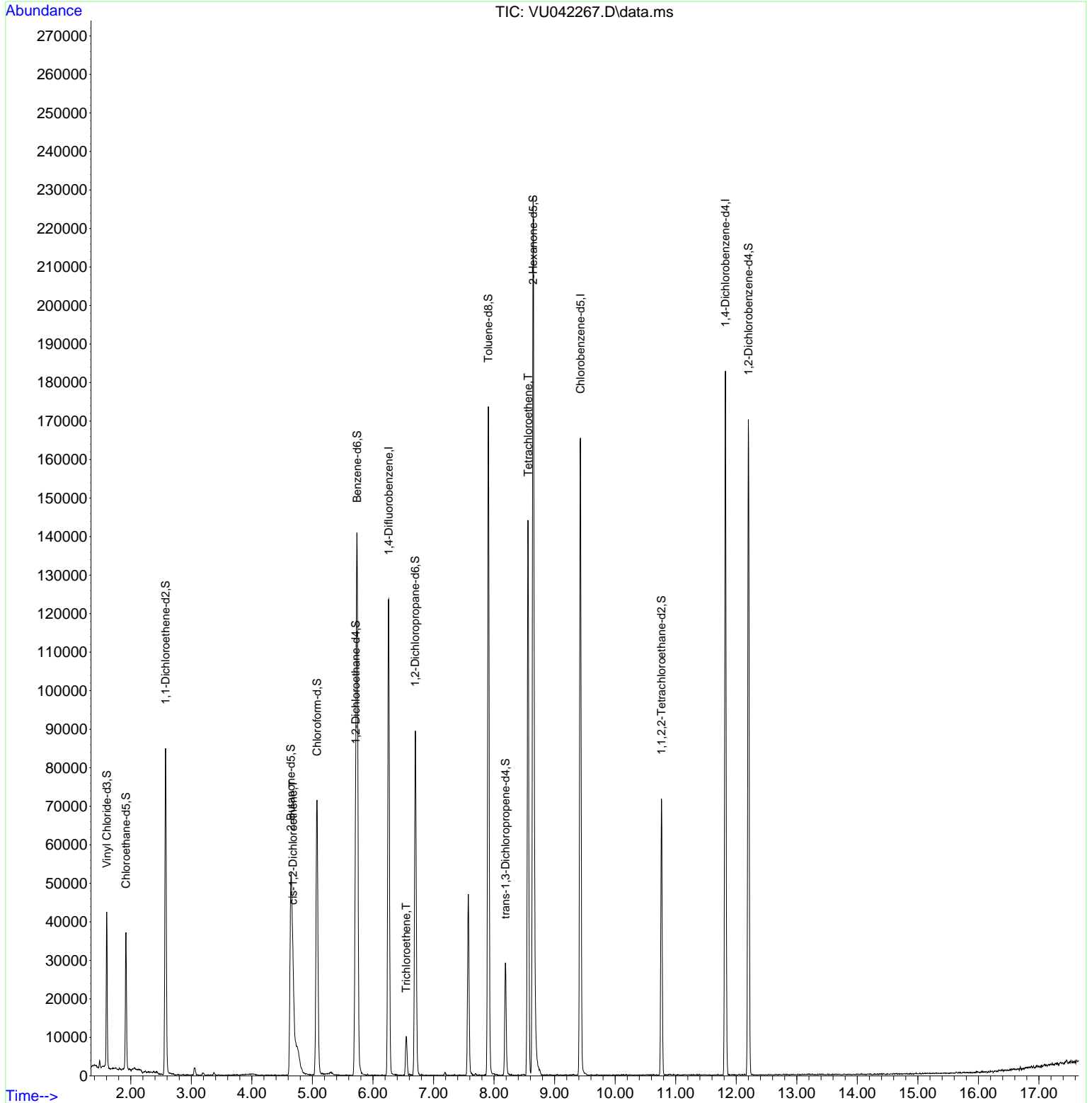
Internal Standards						
1) 1,4-Difluorobenzene	6.259	114	96095	5.00	ug/L	0.00
28) Chlorobenzene-d5	9.427	117	89286	5.00	ug/L	0.00
60) 1,4-Dichlorobenzene-d4	11.822	152	47186	5.00	ug/L	0.00
System Monitoring Compounds						
4) Vinyl Chloride-d3	1.604	65	27989	4.51	ug/L	0.00
Spiked Amount	5.000	Range 40 - 130	Recovery	=	90.20%	
7) Chloroethane-d5	1.919	69	24530	4.91	ug/L	0.00
Spiked Amount	5.000	Range 65 - 130	Recovery	=	98.20%	
11) 1,1-Dichloroethene-d2	2.575	63	52317	3.83	ug/L	0.00
Spiked Amount	5.000	Range 60 - 125	Recovery	=	76.60%	
20) 2-Butanone-d5	4.645	46	99501	43.99	ug/L	0.00
Spiked Amount	50.000	Range 40 - 130	Recovery	=	87.98%	
24) Chloroform-d	5.076	84	63500	4.91	ug/L	0.00
Spiked Amount	5.000	Range 70 - 125	Recovery	=	98.20%	
26) 1,2-Dichloroethane-d4	5.713	65	41180	5.32	ug/L	0.00
Spiked Amount	5.000	Range 70 - 130	Recovery	=	106.40%	
32) Benzene-d6	5.739	84	119672	5.13	ug/L	0.00
Spiked Amount	5.000	Range 70 - 125	Recovery	=	102.60%	
36) 1,2-Dichloropropane-d6	6.700	67	39981	5.32	ug/L	0.00
Spiked Amount	5.000	Range 60 - 140	Recovery	=	106.40%	
41) Toluene-d8	7.906	98	108818	4.94	ug/L	0.00
Spiked Amount	5.000	Range 70 - 130	Recovery	=	98.80%	
43) trans-1,3-Dichloroprop...	8.189	79	15974	4.19	ug/L	0.00
Spiked Amount	5.000	Range 55 - 130	Recovery	=	83.80%	
46) 2-Hexanone-d5	8.645	63	87016	52.43	ug/L	0.00
Spiked Amount	50.000	Range 45 - 130	Recovery	=	104.86%	
57) 1,1,2,2-Tetrachloroeth...	10.764	84	33822	5.24	ug/L	0.00
Spiked Amount	5.000	Range 65 - 120	Recovery	=	104.80%	
64) 1,2-Dichlorobenzene-d4	12.201	152	43229	5.10	ug/L	0.00
Spiked Amount	5.000	Range 80 - 120	Recovery	=	102.00%	
Target Compounds						
						Qvalue
22) cis-1,2-Dichloroethene	4.678	96	6470	0.88	ug/L	99
34) Trichloroethene	6.549	95	3423	0.48	ug/L	93
47) Tetrachloroethene	8.562	164	30636	5.20	ug/L	97

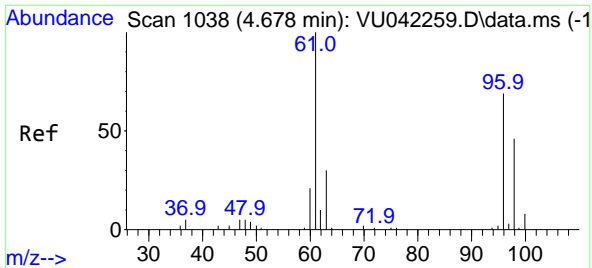
(#) = qualifier out of range (m) = manual integration (+) = signals summed

Data Path : Z:\voasrv\HPCHEM1\MSVOA_U\Data\VU020421\
 Data File : VU042267.D
 Acq On : 04 Feb 2021 15:49
 Operator : SY/MD
 Sample : M1323-02DL 5X
 Misc : 25.0mL/MSVOA_U/WATER
 ALS Vial : 11 Sample Multiplier: 1

Instrument :
 MSVOA_U
 Client Sampled :
 F1E67DL

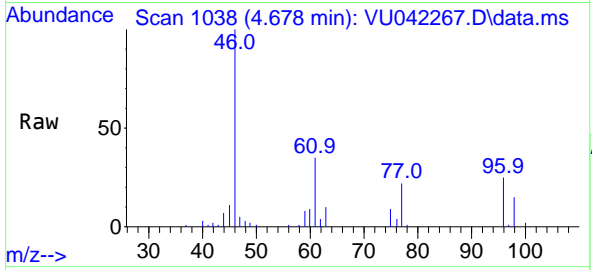
Quant Time: Feb 05 02:25:24 2021
 Quant Method : Z:\voasrv\HPCHEM1\MSVOA_U\Method\SOMUTR012021WMA.M
 Quant Title : TRACE VOA SOM01.0
 QLast Update : Fri Feb 05 02:23:43 2021
 Response via : Initial Calibration





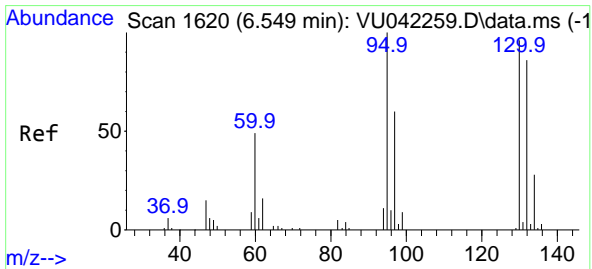
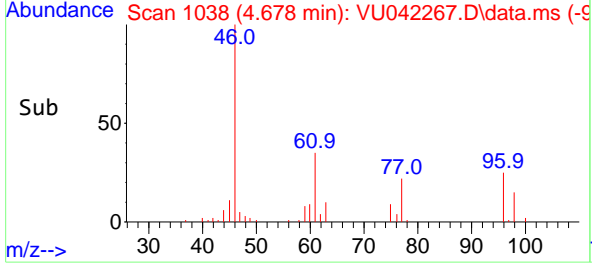
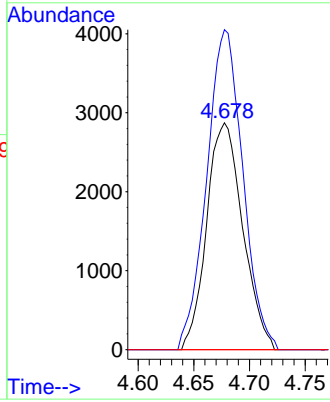
#22
 cis-1,2-Dichloroethene
 Concen: 0.88 ug/L
 RT: 4.678 min Scan# 1038
 Delta R.T. -0.000 min
 Lab File: VU042267.D
 Acq: 04 Feb 2021 15:49

Instrument :
 MSVOA_U
 ClientSampled :
 F1E67DL

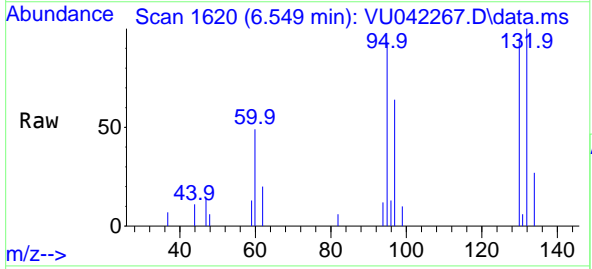


Tgt Ion: 96 Resp: 6470

Ion	Ratio	Lower	Upper
96	100		
61	141.0	97.8	181.6
68	0.0	0.0	0.0

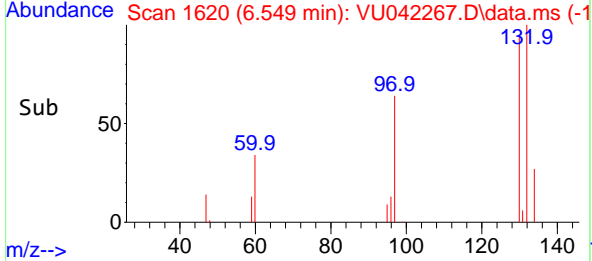
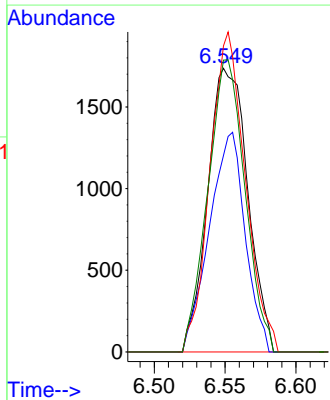


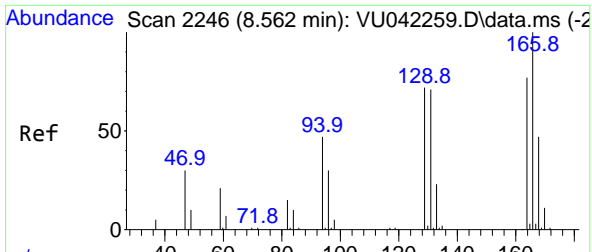
#34
 Trichloroethene
 Concen: 0.48 ug/L
 RT: 6.549 min Scan# 1620
 Delta R.T. -0.000 min
 Lab File: VU042267.D
 Acq: 04 Feb 2021 15:49



Tgt Ion: 95 Resp: 3423

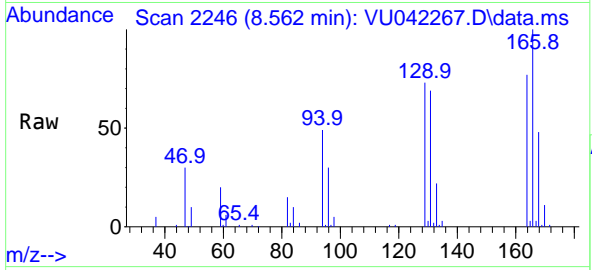
Ion	Ratio	Lower	Upper
95	100		
97	69.3	44.4	82.4
132	107.9	68.0	126.4
130	102.9	69.2	128.4





#47
 Tetrachloroethene
 Concen: 5.20 ug/L
 RT: 8.562 min Scan# 2246
 Delta R.T. -0.000 min
 Lab File: VU042267.D
 Acq: 04 Feb 2021 15:49

Instrument :
 MSVOA_U
 ClientSampled :
 F1E67DL



Tgt Ion:164 Resp: 30636

Ion	Ratio	Lower	Upper
164	100		
129	95.1	64.3	119.5
131	90.1	62.2	115.6
166	130.7	88.6	164.6

