

Data Path : Z:\voasrv\HPCHEM1\MSVOA\_U\Data\VU020523\  
 Data File : VU052966.D  
 Acq On : 05 Feb 2023 20:12  
 Operator : JC/MD  
 Sample : 01440-12  
 Misc : 25.0mL/MSVOA\_U/WATER  
 ALS Vial : 14 Sample Multiplier: 1

**Instrument :**  
 MSVOA\_U  
**ClientSampleId :**  
 COM16

Quant Time: Feb 05 22:00:58 2023  
 Quant Method : Z:\voasrv\HPCHEM1\MSVOA\_U\Method\SFAMUTR011023WMA.M  
 Quant Title : TRACE VOA SFAM1.0  
 QLast Update : Sun Feb 05 21:58:05 2023  
 Response via : Initial Calibration

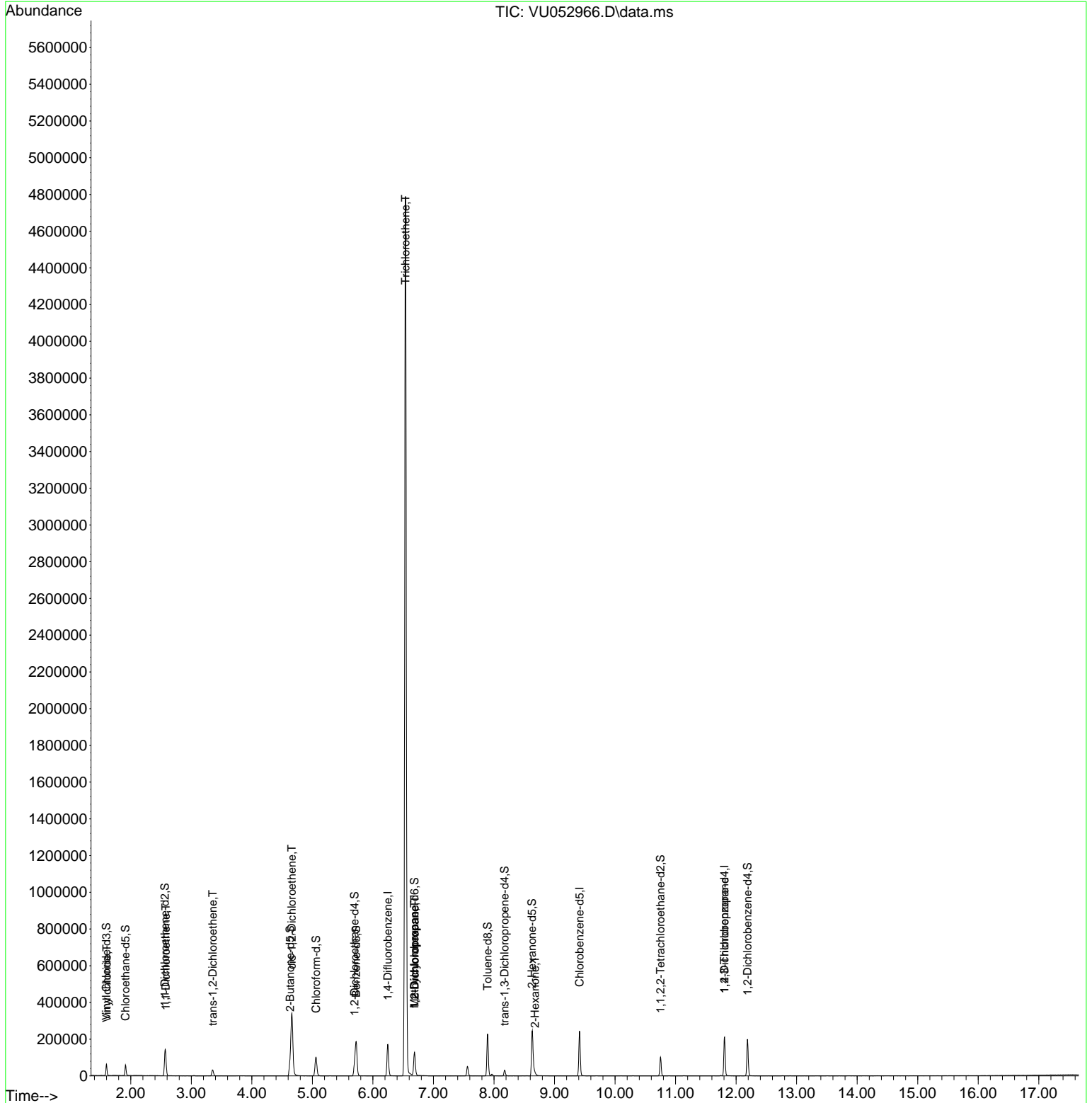
Compound	R.T.	QIon	Response	Conc	Units	Dev(Min)
<b>Internal Standards</b>						
1) 1,4-Difluorobenzene	6.247	114	143379	5.000	ug/L	0.00
28) Chlorobenzene-d5	9.414	117	144347	5.000	ug/L	0.00
58) 1,4-Dichlorobenzene-d4	11.809	152	61194	5.000	ug/L	0.00
<b>System Monitoring Compounds</b>						
4) Vinyl Chloride-d3	1.597	65	39689	3.151	ug/L	0.00
Spiked Amount	5.000	Range 40 - 130	Recovery	=	63.000%	
7) Chloroethane-d5	1.912	69	44363	4.323	ug/L	0.00
Spiked Amount	5.000	Range 65 - 130	Recovery	=	86.400%	
11) 1,1-Dichloroethene-d2	2.565	65	20697	3.731	ug/L	0.00
Spiked Amount	5.000	Range 60 - 125	Recovery	=	74.600%	
20) 2-Butanone-d5	4.633	46	124195	36.875	ug/L	0.00
Spiked Amount	50.000	Range 40 - 130	Recovery	=	73.740%	
24) Chloroform-d	5.060	84	100517	4.278	ug/L	0.00
Spiked Amount	5.000	Range 70 - 125	Recovery	=	85.600%	
26) 1,2-Dichloroethane-d4	5.697	65	49656	4.115	ug/L	0.00
Spiked Amount	5.000	Range 70 - 130	Recovery	=	82.400%	
32) Benzene-d6	5.723	84	186990	3.997	ug/L	0.00
Spiked Amount	5.000	Range 70 - 125	Recovery	=	80.000%	
36) 1,2-Dichloropropane-d6	6.687	67	60528	3.882	ug/L	0.00
Spiked Amount	5.000	Range 60 - 140	Recovery	=	77.600%	
41) Toluene-d8	7.896	98	155250	3.764	ug/L	0.00
Spiked Amount	5.000	Range 70 - 130	Recovery	=	75.200%	
43) trans-1,3-Dichloroprop...	8.176	79	19812	3.417	ug/L	0.00
Spiked Amount	5.000	Range 55 - 130	Recovery	=	68.400%	
46) 2-Hexanone-d5	8.629	63	81617	33.888	ug/L	0.00
Spiked Amount	50.000	Range 45 - 130	Recovery	=	67.780%	
56) 1,1,2,2-Tetrachloroeth...	10.751	84	50541	4.234	ug/L	0.00
Spiked Amount	5.000	Range 65 - 120	Recovery	=	84.600%	
66) 1,2-Dichlorobenzene-d4	12.189	152	55624	4.993	ug/L	0.00
Spiked Amount	5.000	Range 80 - 120	Recovery	=	99.800%	
<b>Target Compounds</b>						
5) Vinyl chloride	1.604	62	7319	0.409	ug/L	96
12) 1,1-Dichloroethene	2.578	96	22205	1.786	ug/L #	63
18) trans-1,2-Dichloroethene	3.353	96	14499	1.144	ug/L	88
22) cis-1,2-Dichloroethene	4.662	96	173774	12.764	ug/L	91
34) Trichloroethene	6.539	95	1630871	120.674	ug/L	94
35) Methylcyclohexane	6.687	83	15090	0.676	ug/L #	15
37) 1,2-Dichloropropane	6.690	63	6252	0.408	ug/L #	91
48) 2-Hexanone	8.677	43	5277	0.822	ug/L #	96
61) 1,2,3-Trichloropropane	11.809	75	6556	0.922	ug/L #	68

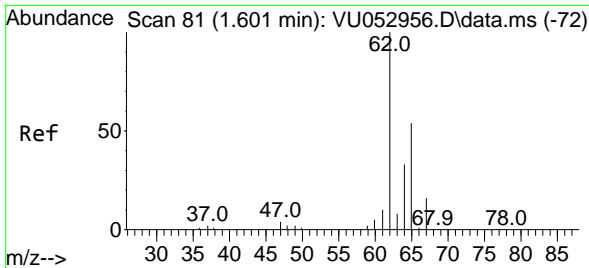
(#) = qualifier out of range (m) = manual integration (+) = signals summed

Data Path : Z:\voasrv\HPCHEM1\MSVOA\_U\Data\VU020523\  
 Data File : VU052966.D  
 Acq On : 05 Feb 2023 20:12  
 Operator : JC/MD  
 Sample : 01440-12  
 Misc : 25.0mL/MSVOA\_U/WATER  
 ALS Vial : 14 Sample Multiplier: 1

**Instrument :**  
 MSVOA\_U  
**ClientSampleId :**  
 COM16

Quant Time: Feb 05 22:00:58 2023  
 Quant Method : Z:\voasrv\HPCHEM1\MSVOA\_U\Method\SFAMUTR011023WMA.M  
 Quant Title : TRACE VOA SFAM1.0  
 QLast Update : Sun Feb 05 21:58:05 2023  
 Response via : Initial Calibration

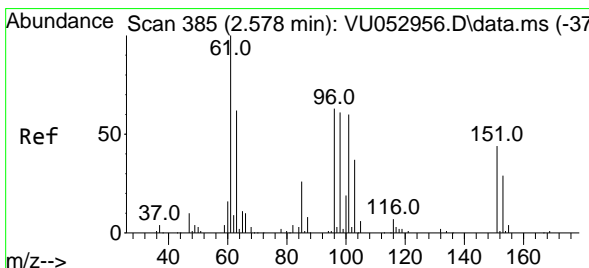
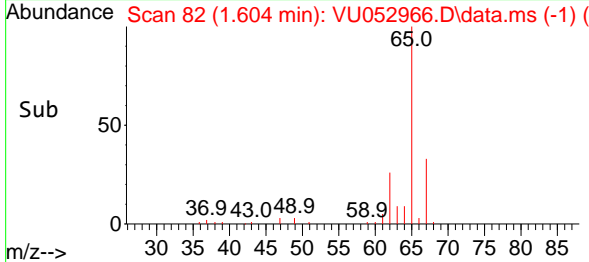
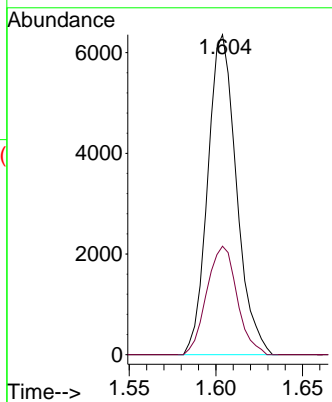
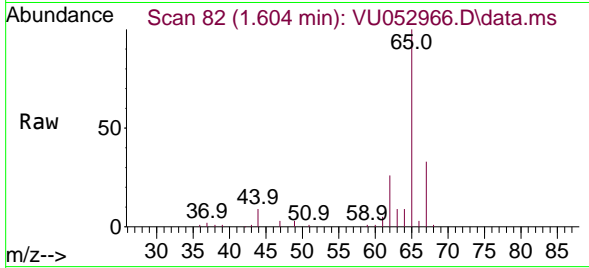




#5  
 Vinyl chloride  
 Concen: 0.409 ug/L  
 RT: 1.604 min Scan# 81  
 Delta R.T. 0.003 min  
 Lab File: VU052966.D  
 Acq: 05 Feb 2023 20:12

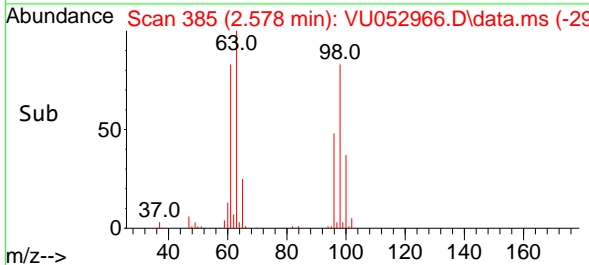
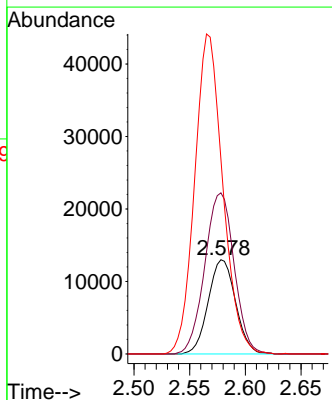
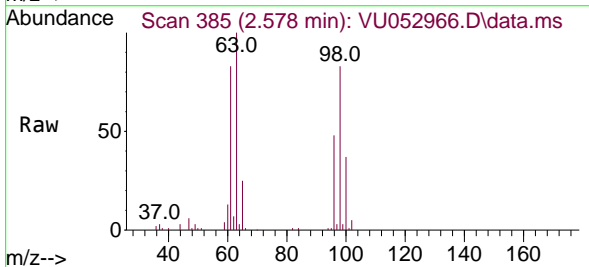
Instrument :  
 MSVOA\_U  
 ClientSampleId :  
 COM16

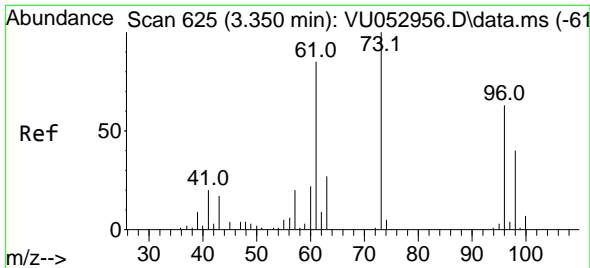
Tgt Ion: 62 Resp: 7319  
 Ion Ratio Lower Upper  
 62 100  
 64 33.9 22.3 41.3



#12  
 1,1-Dichloroethene  
 Concen: 1.786 ug/L  
 RT: 2.578 min Scan# 385  
 Delta R.T. 0.000 min  
 Lab File: VU052966.D  
 Acq: 05 Feb 2023 20:12

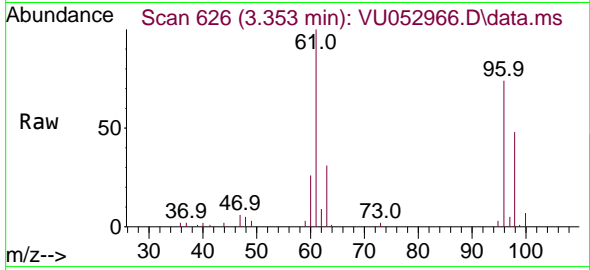
Tgt Ion: 96 Resp: 22205  
 Ion Ratio Lower Upper  
 96 100  
 61 171.0 129.6 240.8  
 63 206.8 83.7 155.5#





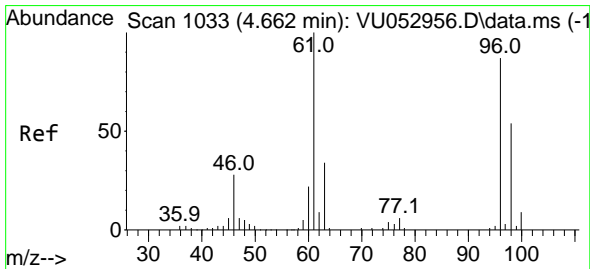
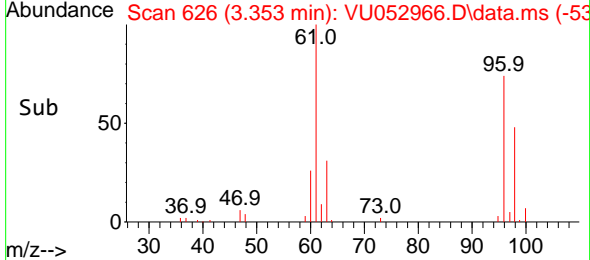
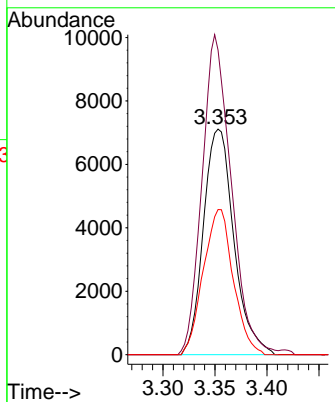
#18  
 trans-1,2-Dichloroethene  
 Concen: 1.144 ug/L  
 RT: 3.353 min Scan# 61  
 Delta R.T. 0.003 min  
 Lab File: VU052966.D  
 Acq: 05 Feb 2023 20:12

Instrument : MSVOA\_U  
 ClientSampleId : COM16



Tgt Ion: 96 Resp: 14499

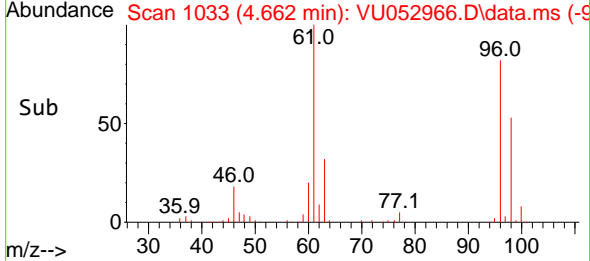
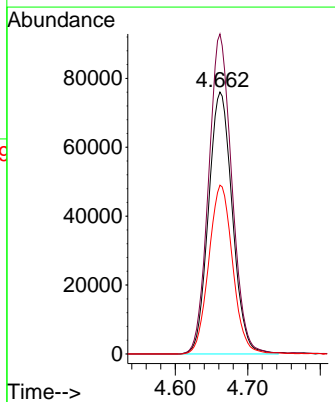
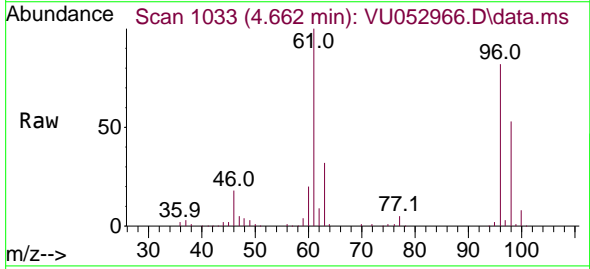
Ion	Ratio	Lower	Upper
96	100		
61	135.1	108.4	201.4
98	64.3	43.8	81.4

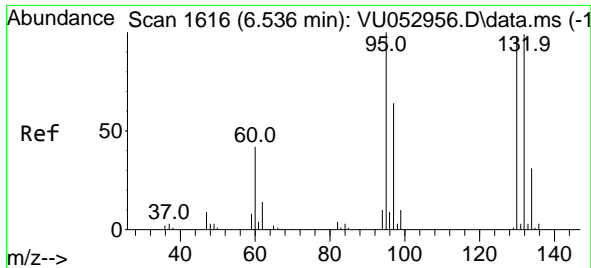


#22  
 cis-1,2-Dichloroethene  
 Concen: 12.764 ug/L  
 RT: 4.662 min Scan# 1033  
 Delta R.T. 0.000 min  
 Lab File: VU052966.D  
 Acq: 05 Feb 2023 20:12

Tgt Ion: 96 Resp: 173774

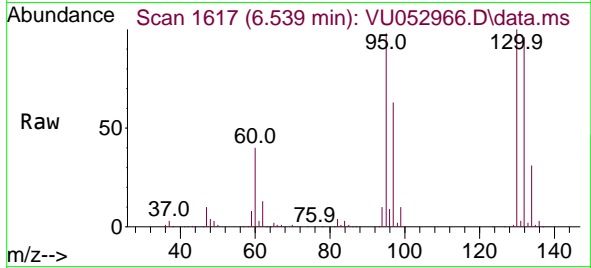
Ion	Ratio	Lower	Upper
96	100		
61	122.2	94.6	175.8
98	64.5	43.3	80.3



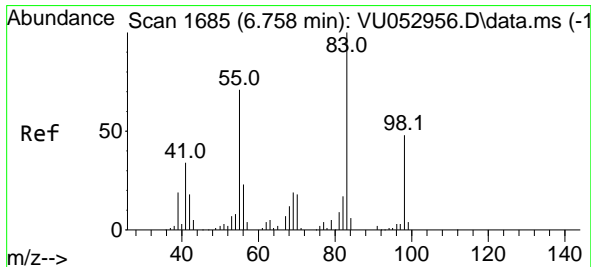
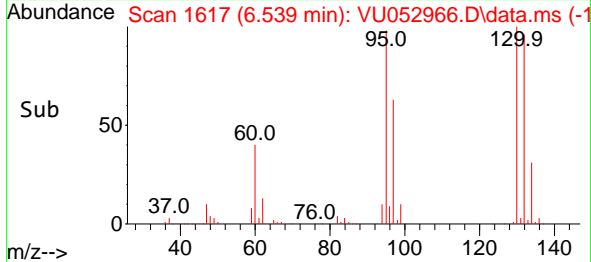
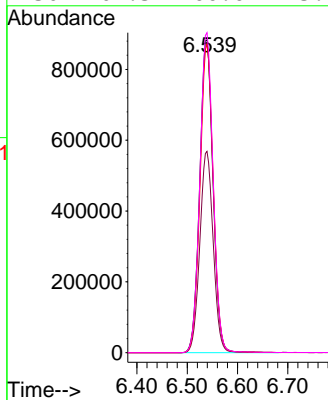


#34  
 Trichloroethene  
 Concen: 120.674 ug/L  
 RT: 6.539 min Scan# 1616  
 Delta R.T. 0.003 min  
 Lab File: VU052966.D  
 Acq: 05 Feb 2023 20:12

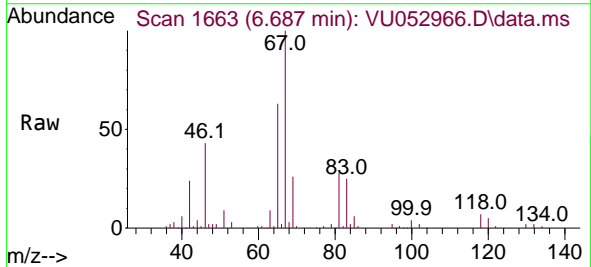
Instrument : MSVOA\_U  
 ClientSampleId : COM16



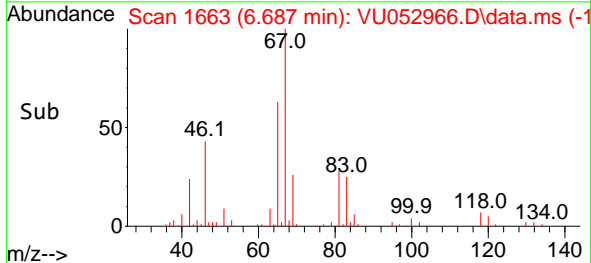
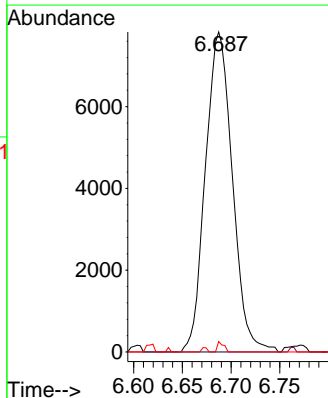
Tgt Ion: 95 Resp: 1630871  
 Ion Ratio Lower Upper  
 95 100  
 97 64.3 46.0 85.4  
 132 98.7 64.0 118.8  
 130 102.3 66.6 123.8

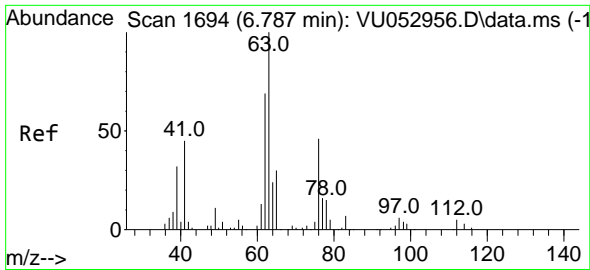


#35  
 Methylcyclohexane  
 Concen: 0.676 ug/L  
 RT: 6.687 min Scan# 1663  
 Delta R.T. -0.071 min  
 Lab File: VU052966.D  
 Acq: 05 Feb 2023 20:12



Tgt Ion: 83 Resp: 15090  
 Ion Ratio Lower Upper  
 83 100  
 55 0.3 67.6 101.4#  
 98 0.0 37.1 55.7#

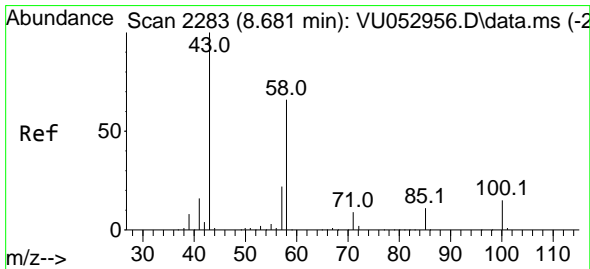
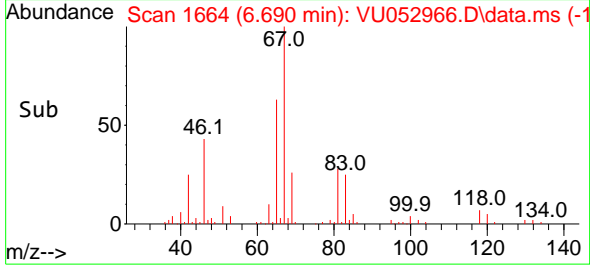
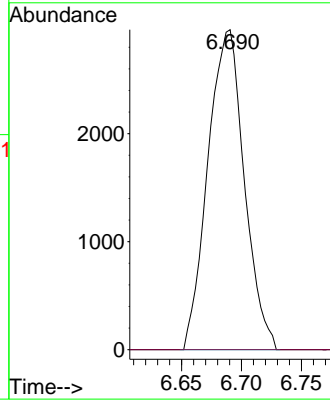
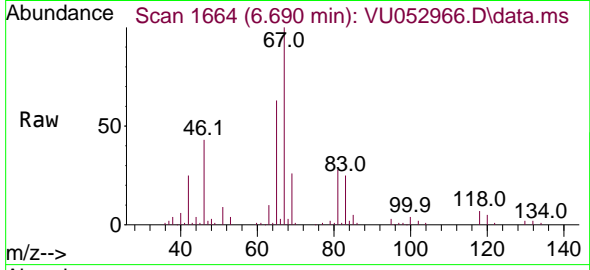




#37  
 1,2-Dichloropropane  
 Concen: 0.408 ug/L  
 RT: 6.690 min Scan# 1  
 Delta R.T. -0.096 min  
 Lab File: VU052966.D  
 Acq: 05 Feb 2023 20:12

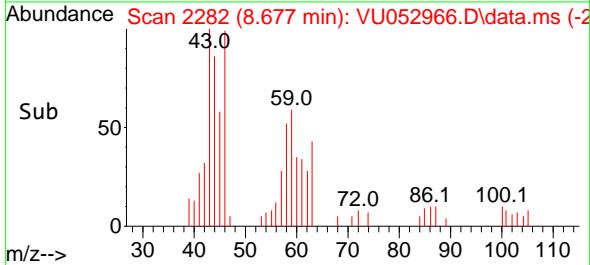
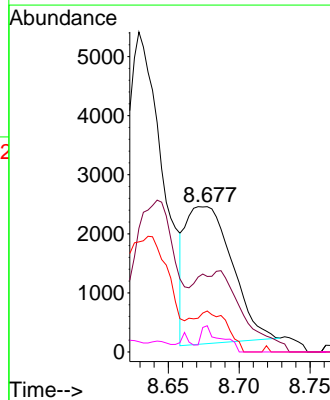
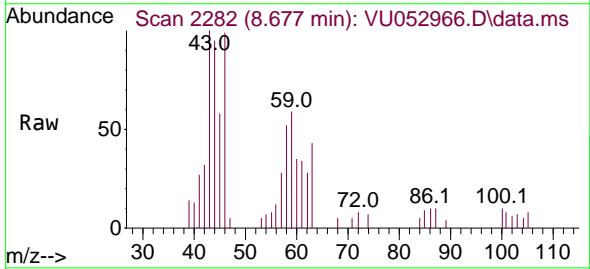
Instrument :  
 MSVOA\_U  
 ClientSampleId :  
 COM16

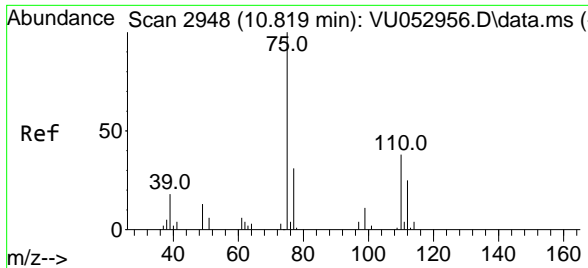
Tgt Ion: 63 Resp: 6252  
 Ion Ratio Lower Upper  
 63 100  
 112 0.7 2.9 4.3#



#48  
 2-Hexanone  
 Concen: 0.822 ug/L  
 RT: 8.677 min Scan# 2282  
 Delta R.T. -0.003 min  
 Lab File: VU052966.D  
 Acq: 05 Feb 2023 20:12

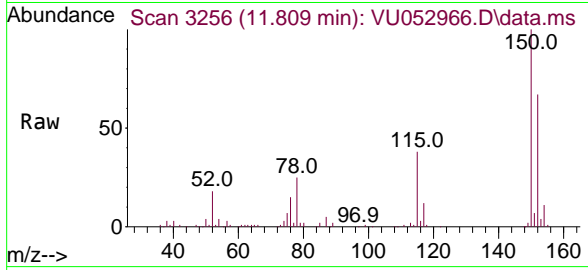
Tgt Ion: 43 Resp: 5277  
 Ion Ratio Lower Upper  
 43 100  
 58 59.4 45.1 67.7  
 57 18.5 15.1 22.7  
 100 8.4 9.0 13.4#





#61  
 1,2,3-Trichloropropane  
 Concen: 0.922 ug/L  
 RT: 11.809 min Scan# 31  
 Delta R.T. 0.990 min  
 Lab File: VU052966.D  
 Acq: 05 Feb 2023 20:12

Instrument :  
 MSVOA\_U  
 ClientSampleId :  
 COM16



Tgt Ion: 75 Resp: 6556

Ion	Ratio	Lower	Upper
75	100		
110	0.6	27.2	40.8#
77	31.7	24.0	36.0

